

V&V Reference Report

L2 ASCDS Version : 7.6.7

Observation 5836 - L2 Version 002
Chandra X-Ray Center

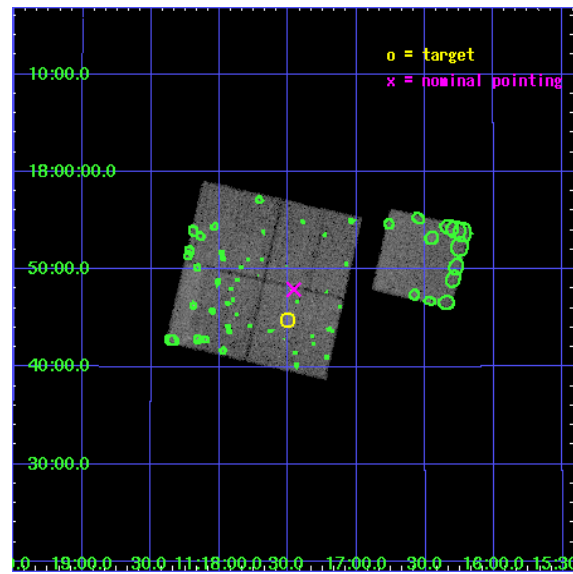
L2 Processing Date: Feb 23 2006

Contents

1	Front	2
2	OBI	3
2.1	OBI	3
2.1.1	Images	3
2.1.2	Bias	3
2.1.3	Parameters	4
2.1.4	Events	4
2.2	Compared Parameters	5
2.3	Aspect	6
2.4	Star Slots	9
2.4.1	Slot 3	9
2.4.2	Slot 4	10
2.4.3	Slot 5	11
2.4.4	Slot 6	12
2.4.5	Slot 7	13
2.5	FID Slots	14
2.5.1	Slot 0	14
2.5.2	Slot 1	15
2.5.3	Slot 2	16
3	Point Sources	17
A	Summary	18
A.1	Status	18
A.2	Comments	18

1 Front

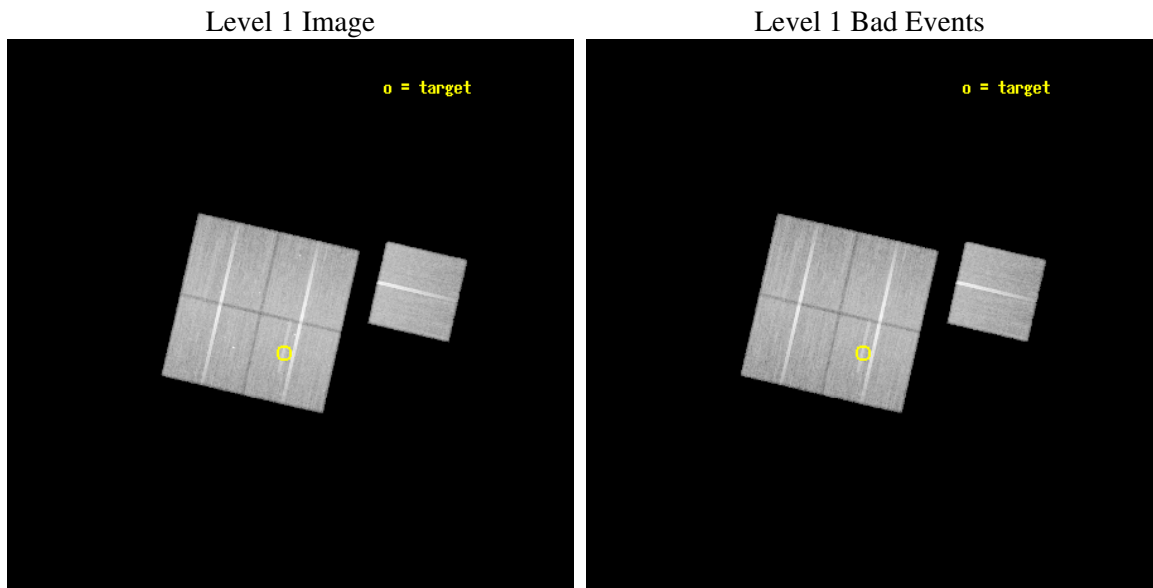
seq_num	800545
obs_id	5836
title	Supplement to Chandra observations of high-redshift clusters of galaxies from the 400 Square Degree ROSAT PSPC survey
observer	Dr. Steven Murray
object	cl1117+1744
dtcycle	0
cycle	P
ra_targ	169.375417
dec_targ	17.745833
ra_nom	169.36460561179
dec_nom	17.799138742908
roll_nom	103.02568779004
revision	2
ontime	45758.895020545
livetime	45161.021369893
ontime0	45755.753950685
ontime1	45774.599911988
ontime2	45755.753970653
ontime3	45758.895020545
ontime6	45771.458931744
l2events	120521



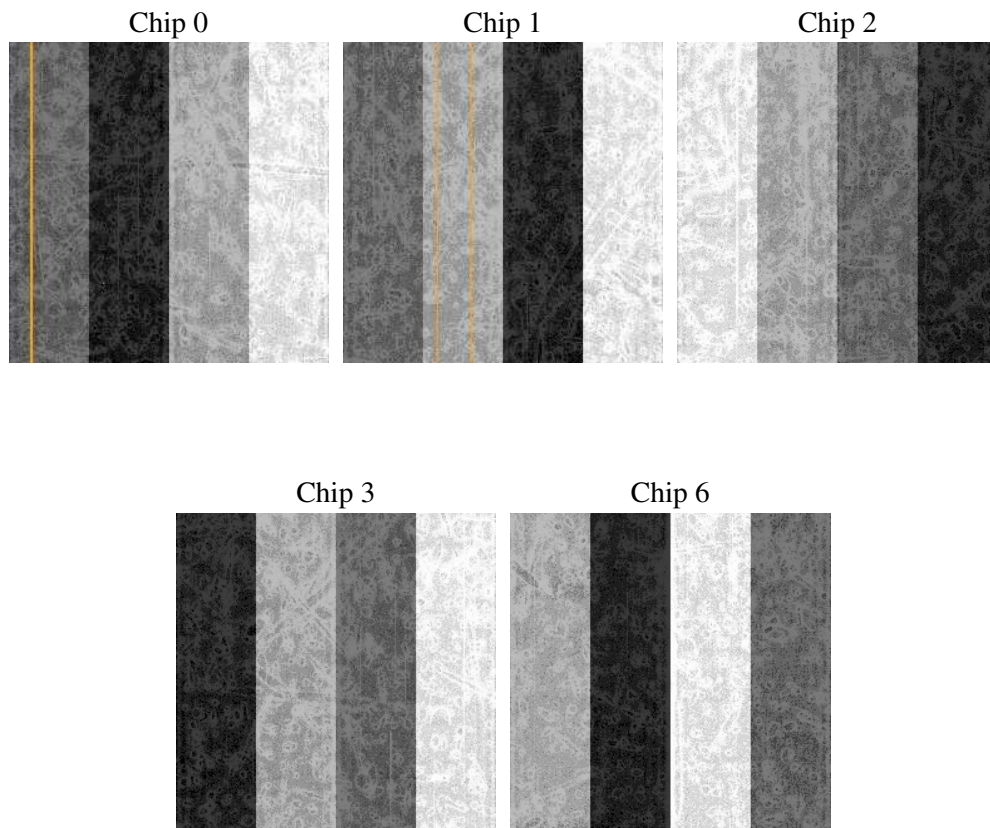
2 OBI

2.1 OBI

2.1.1 Images



2.1.2 Bias



2.1.3 Parameters

obi_num	0
ascdsver	7.6.7
caldsver	3.2.1
date	2006-02-23T22:07:34
revision	2

sched_exp_time	46000.000000
ontime	45761.404199749
ontime0	45758.263119996
ontime1	45777.10906139
ontime2	45758.263120055
ontime3	45761.404199749
ontime6	45773.968081146
l1events	1379773

2.1.4 Events

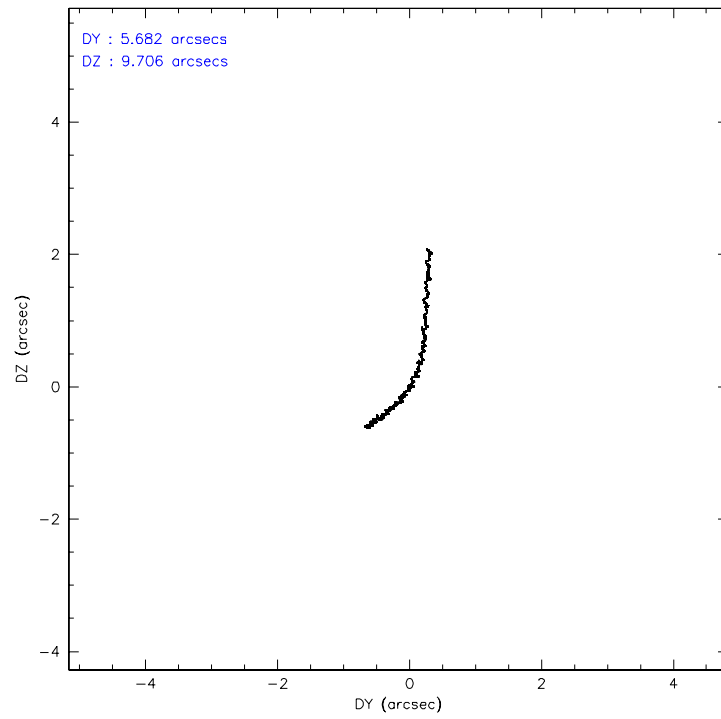
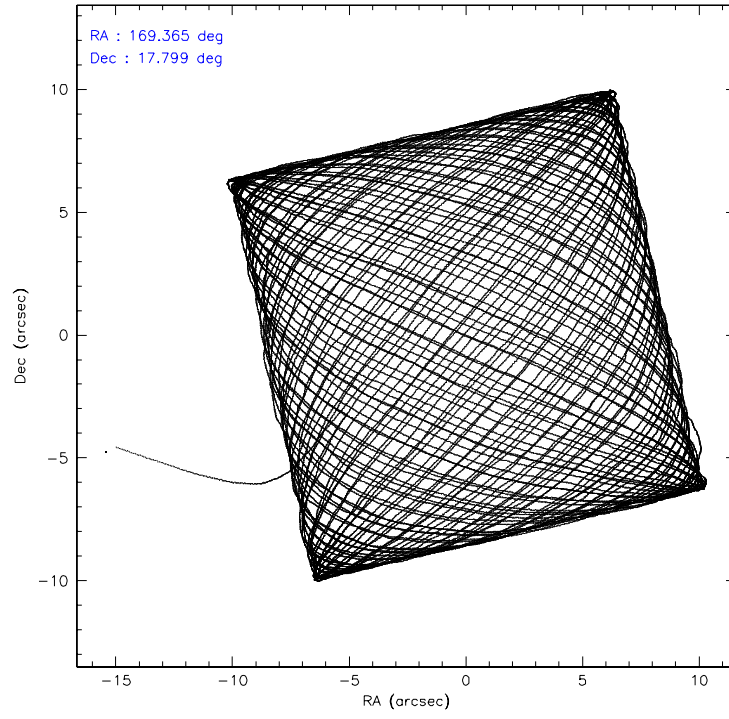
	ccd 0	ccd 1	ccd 2	ccd 3	ccd 6
level 1 events	265649	266099	290294	280543	277188
rejected events	237330	233911	262527	252730	248943
rejected %	89%	87%	90%	90%	89%

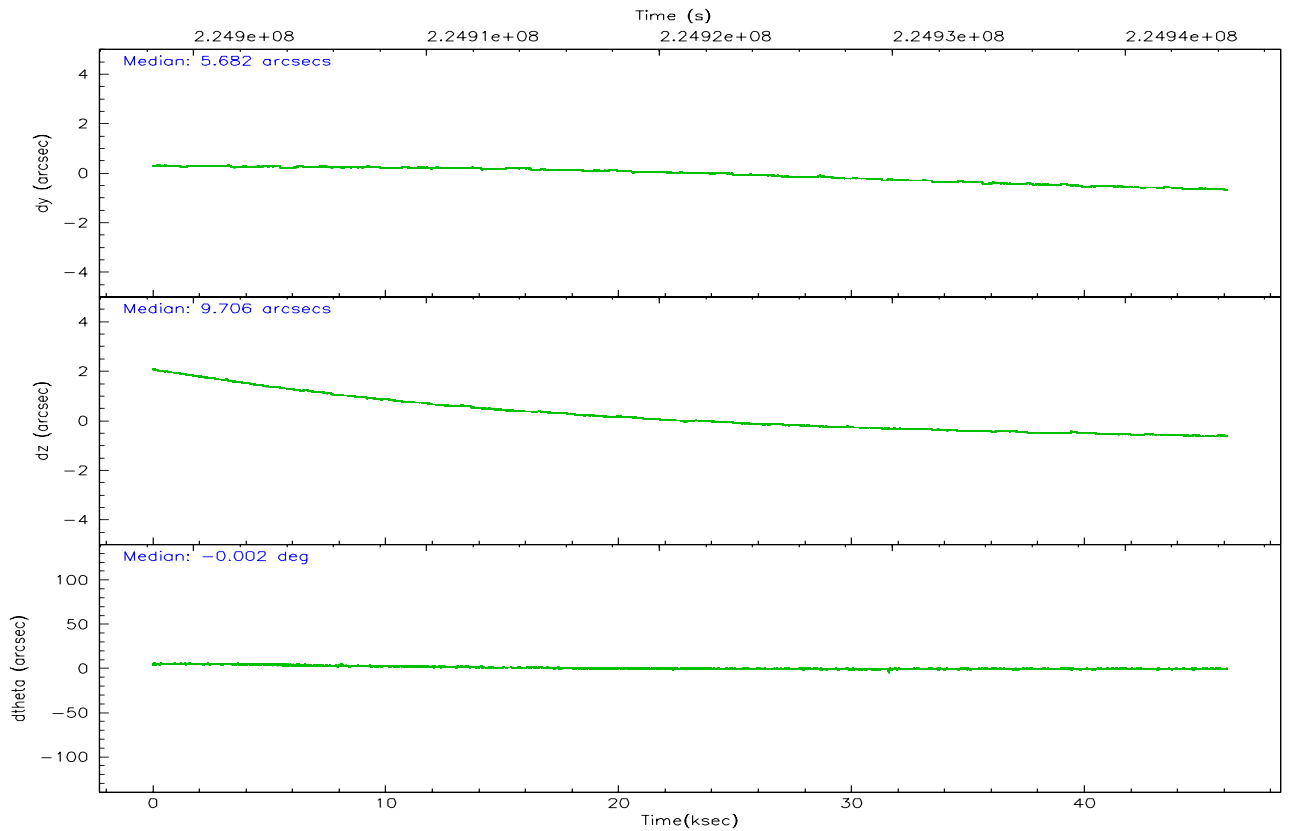
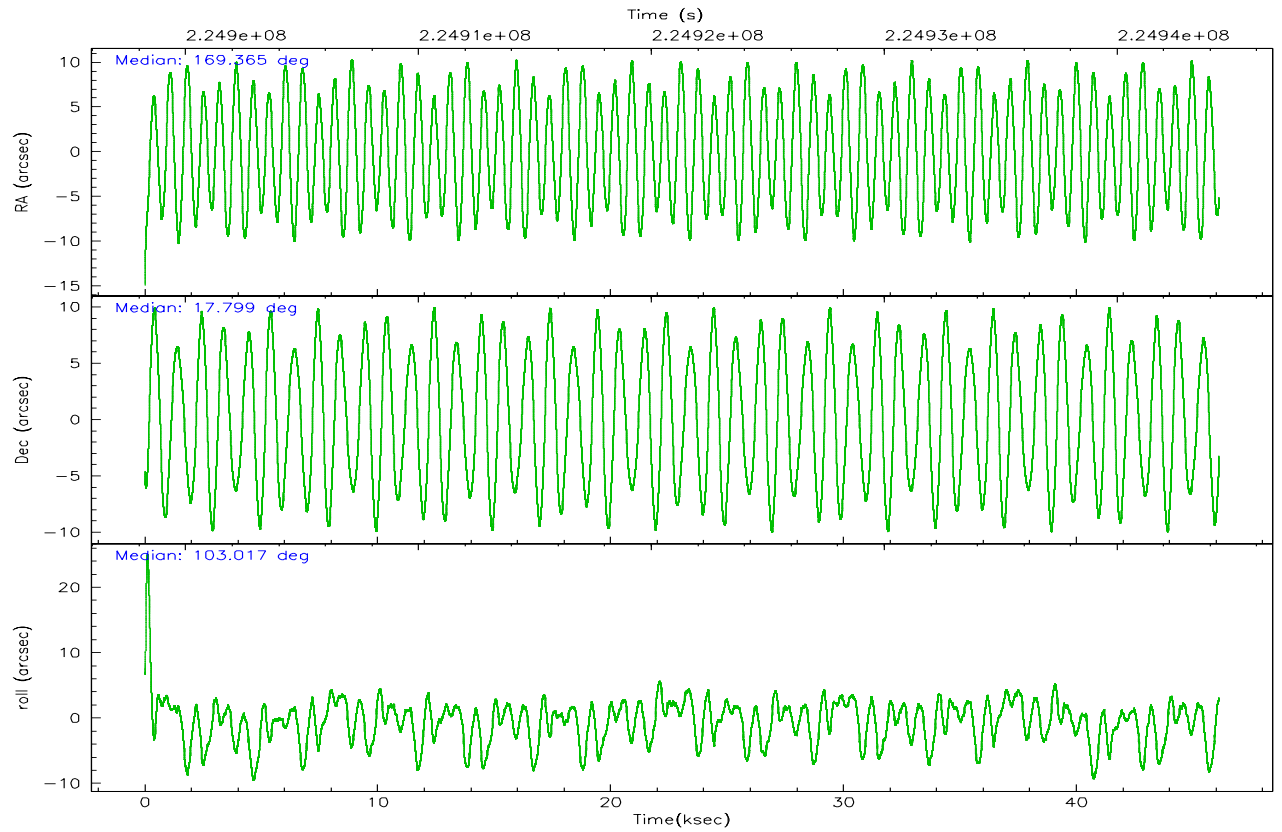
	ccd 0	ccd 1	ccd 2	ccd 3	ccd 6
grade 0 events	9829	12068	9971	10536	9781
	3%	4%	3%	3%	3%
grade 1 events	126	132	140	140	125
	0%	0%	0%	0%	0%
grade 2 events	6492	6752	6574	5747	6081
	2%	2%	2%	2%	2%
grade 3 events	3423	3510	3018	3085	3164
	1%	1%	1%	1%	1%
grade 4 events	3043	3516	2946	3162	3128
	1%	1%	1%	1%	1%
grade 5 events	10065	10683	9699	11187	10895
	3%	4%	3%	3%	3%
grade 6 events	5535	6344	5261	5288	6092
	2%	2%	1%	1%	2%
grade 7 events	227136	223094	252685	241398	237922
	85%	83%	87%	86%	85%

2.2 Compared Parameters

Parameter	Planned	Actual	Parameter	Planned	Actual
Instrument	ACIS	ACIS	Obspar format version number	6	6
Detector	ACIS-01236	ACIS-01236	Obspar file type	PREDICTED	ACTUAL
Grating	NONE	NONE	Obspar update status	NONE	UPDATED
Data mode	VFAINT	VFAINT	On-chip summing requested	N	N
Observation mode	POINTING	POINTING	Subarray requested	NONE	NONE
Pointing RA	169.384324	169.3646056117882	Alternating exposures requested	N	N
Pointing Dec	17.779210	17.79913874290791	Primary exposure time	0.000000	3.1
Pointing Roll	102.810982	103.0256877900391			
SIM focus pos (mm)	-0.782348	-0.7809083437167272			
SIM defocus (mm)	0	0.001439871863259334			
SIM translation stage pos (mm)	-225.840463	-225.8458576473255			
SIM translation stage offset (mm)	-7.752	-7.746595355604228			
Observation start time	224898392.184000	224897173.42888			
Observation start date	2005-02-15T23:45:28	2005-02-15T23:26:13			
Observation end time	224944392.184000	224946073.61859			
Observation end date	2005-02-16T12:32:08	2005-02-16T13:01:13			
Read mode	TIMED	TIMED			

2.3 Aspect



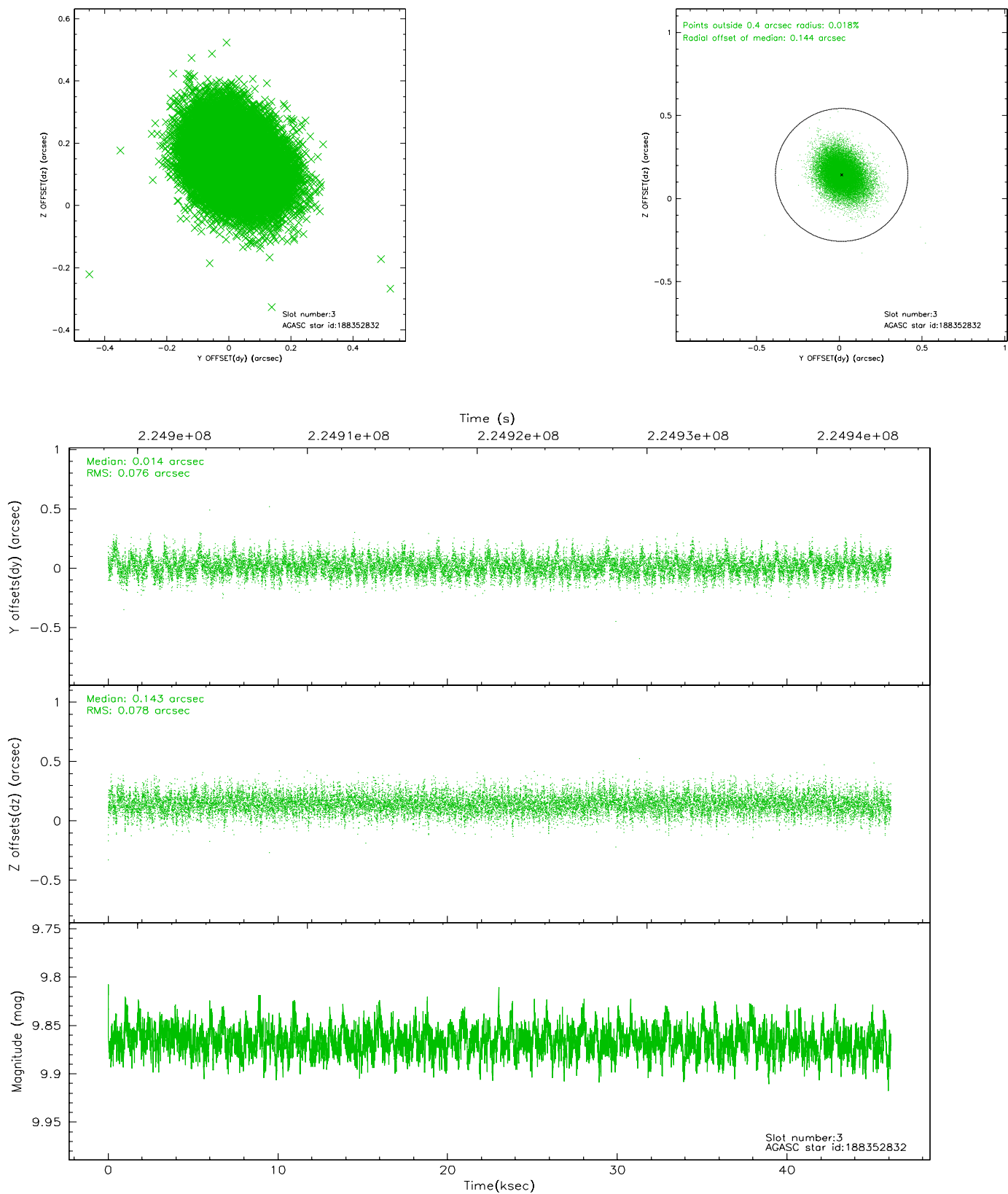


Slot Statistics

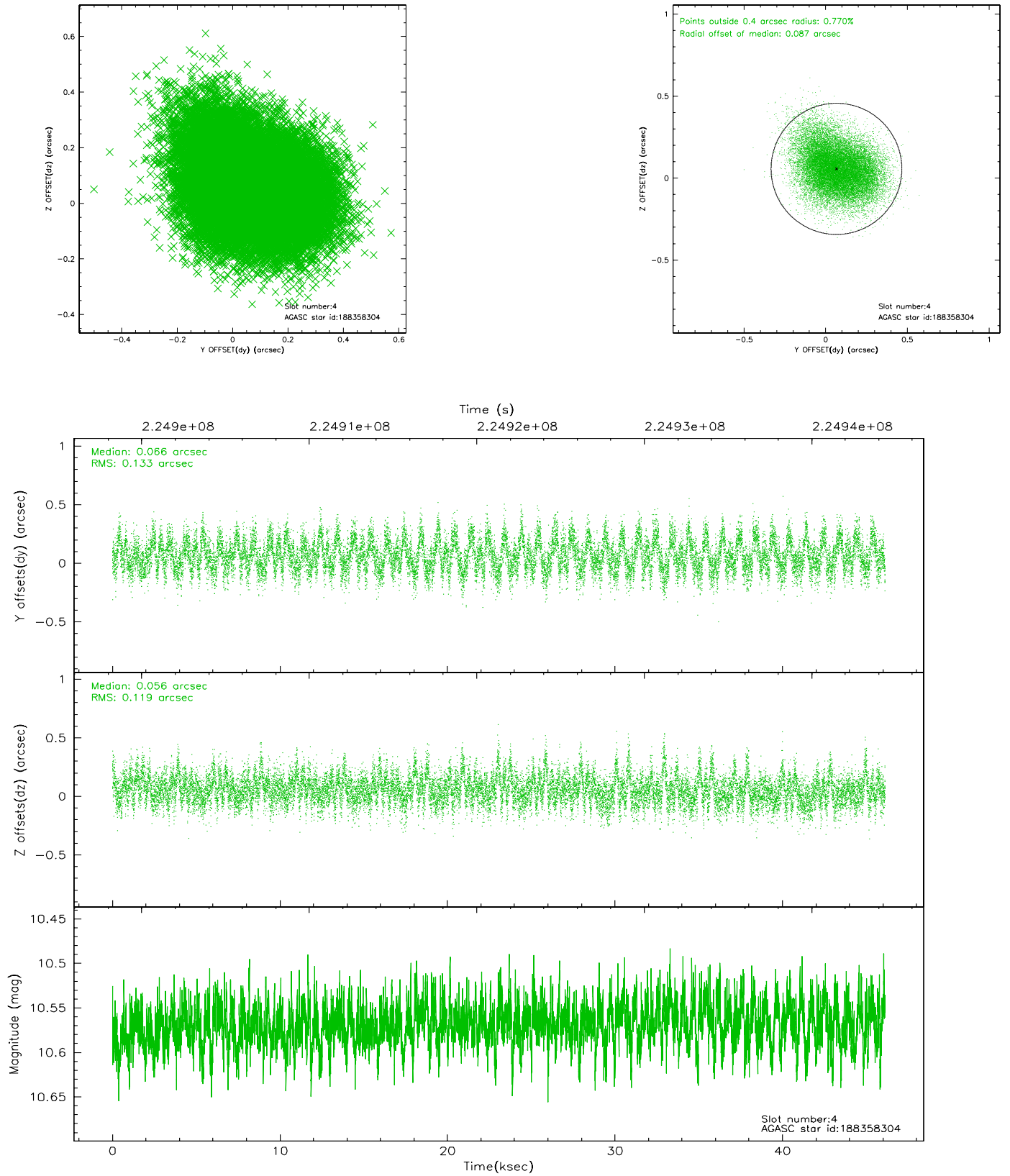
slot	status	id	mag	n_pts	med_dy	med_dz	dr1	dr2	ra	dec	mean_y	mean_z
0	FID	ACIS-I-1	7.23	11252	0.077	-0.057	0.021	0.042	0.000000	0.000000	934.04	-992.50
1	FID	ACIS-I-5	7.22	11251	-0.218	0.072	0.015	0.039	0.000000	0.000000	-1814.36	905.12
2	FID	ACIS-I-6	7.25	11250	0.054	0.053	0.020	0.048	0.000000	0.000000	399.57	1549.59
3	GUIDE	188352832	9.87	22484	0.014	0.143	0.115	0.190	169.850472	18.107090	799.62	-1816.55
4	GUIDE	188358304	10.57	22473	0.066	0.056	0.191	0.307	169.015817	17.939071	842.34	1103.20
5	GUIDE	188362192	7.54	22502	-0.085	0.010	0.071	0.115	170.110288	17.311287	-2190.90	-2060.69
6	GUIDE	188368384	10.04	22485	0.033	-0.150	0.142	0.226	168.918377	17.370042	-1079.57	1887.19
7	GUIDE	188358160	10.32	22472	-0.028	-0.055	0.174	0.284	168.610775	18.068520	1607.56	2349.62

2.4 Star Slots

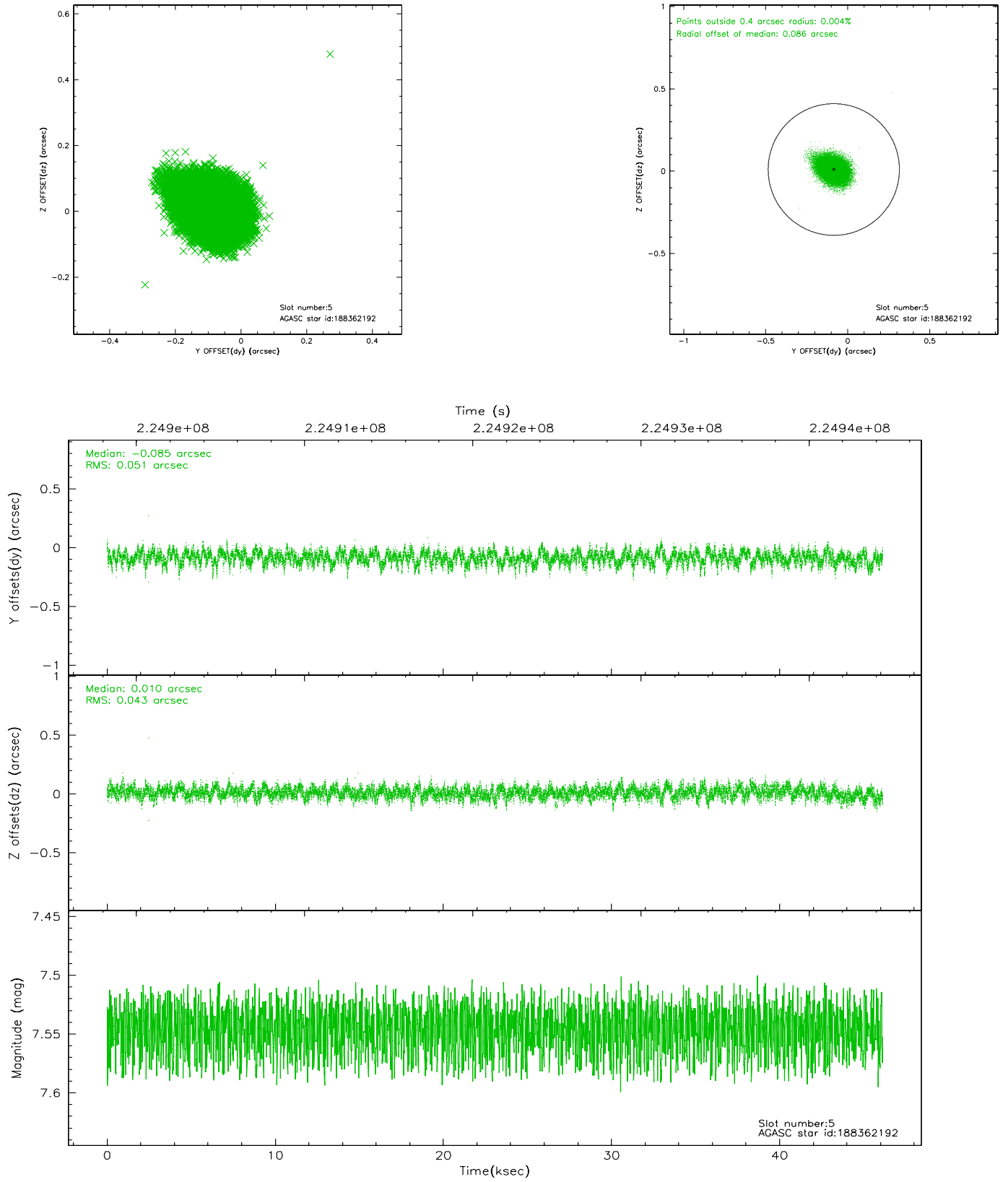
2.4.1 Slot 3



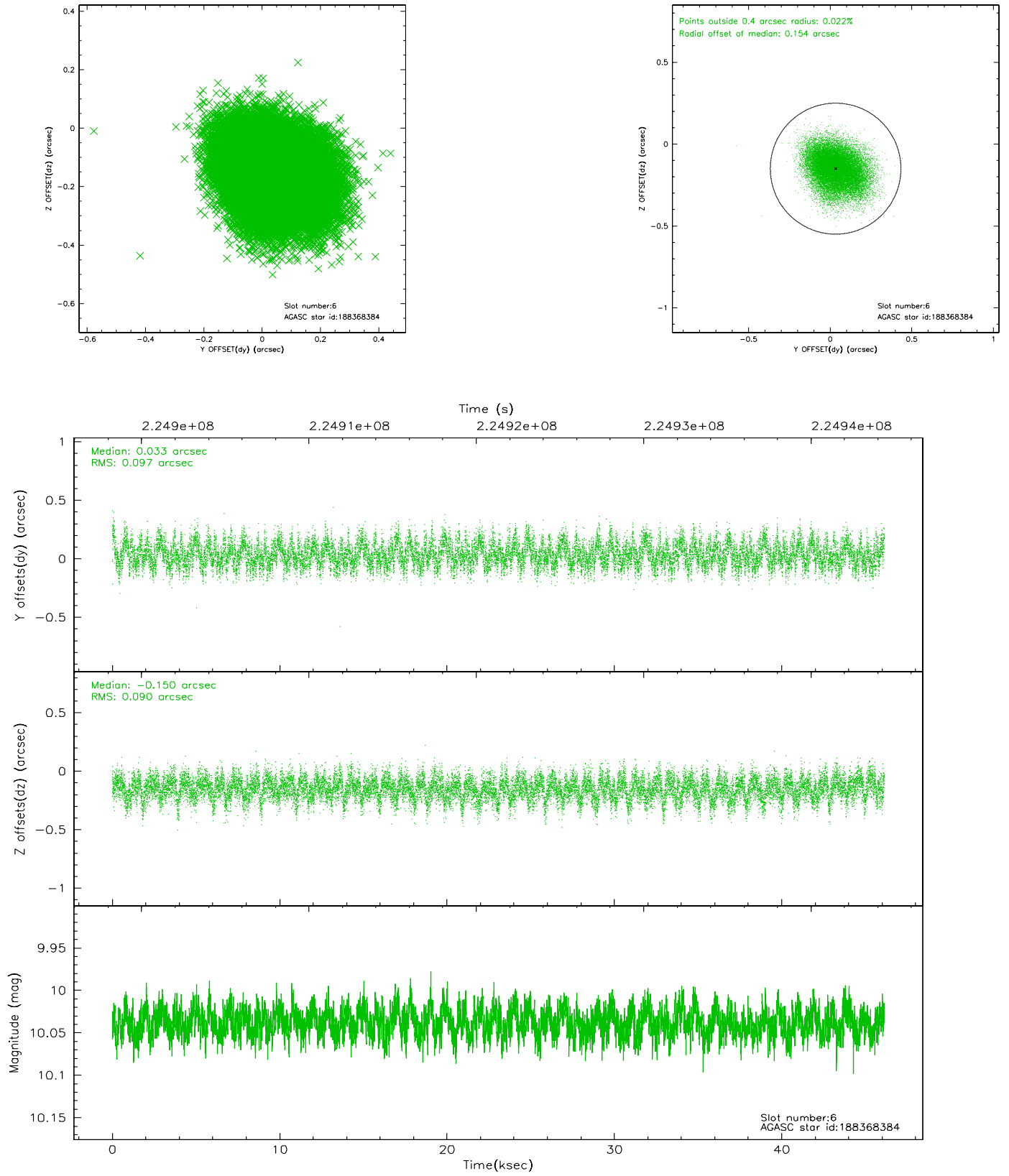
2.4.2 Slot 4



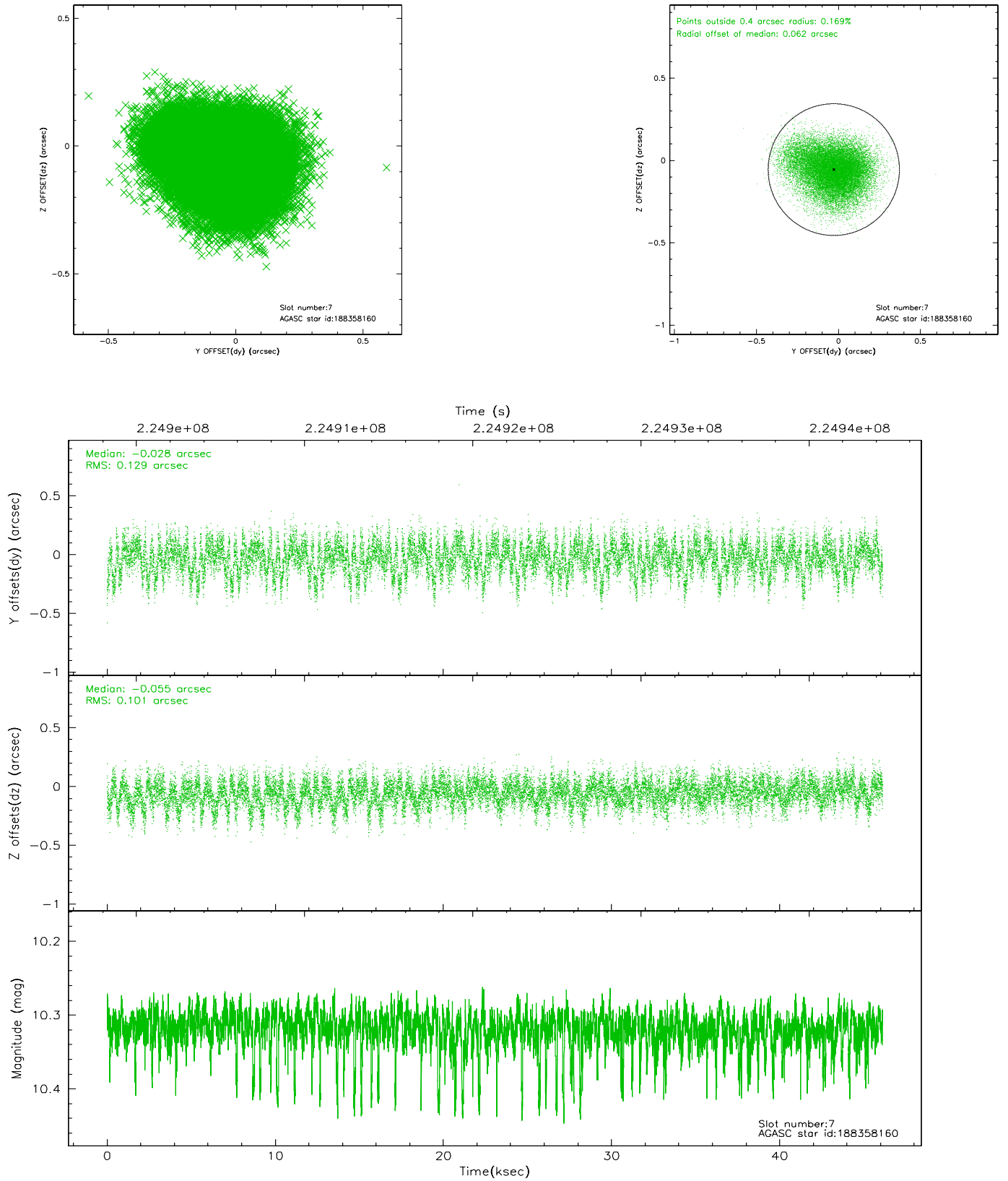
2.4.3 Slot 5



2.4.4 Slot 6

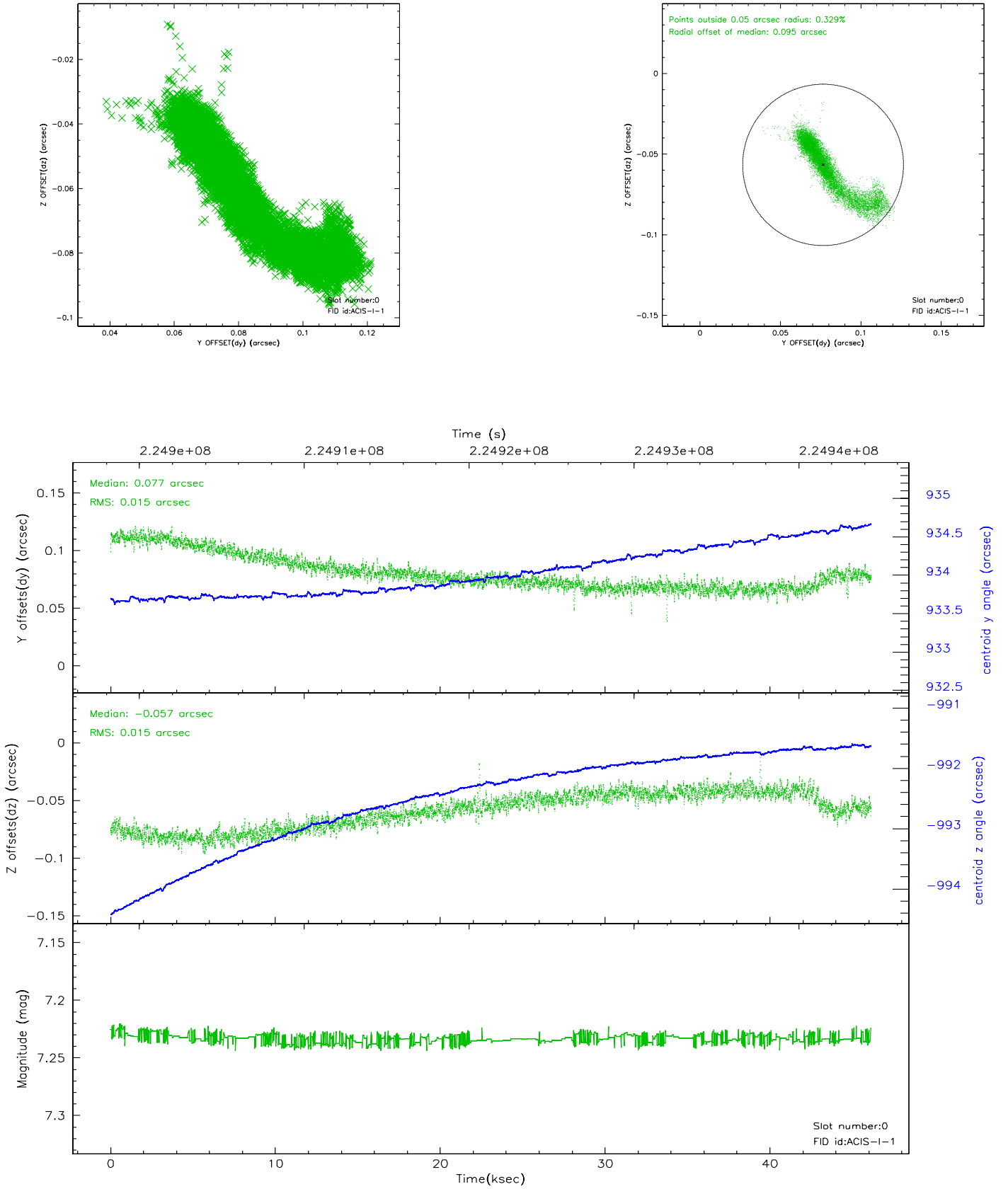


2.4.5 Slot 7

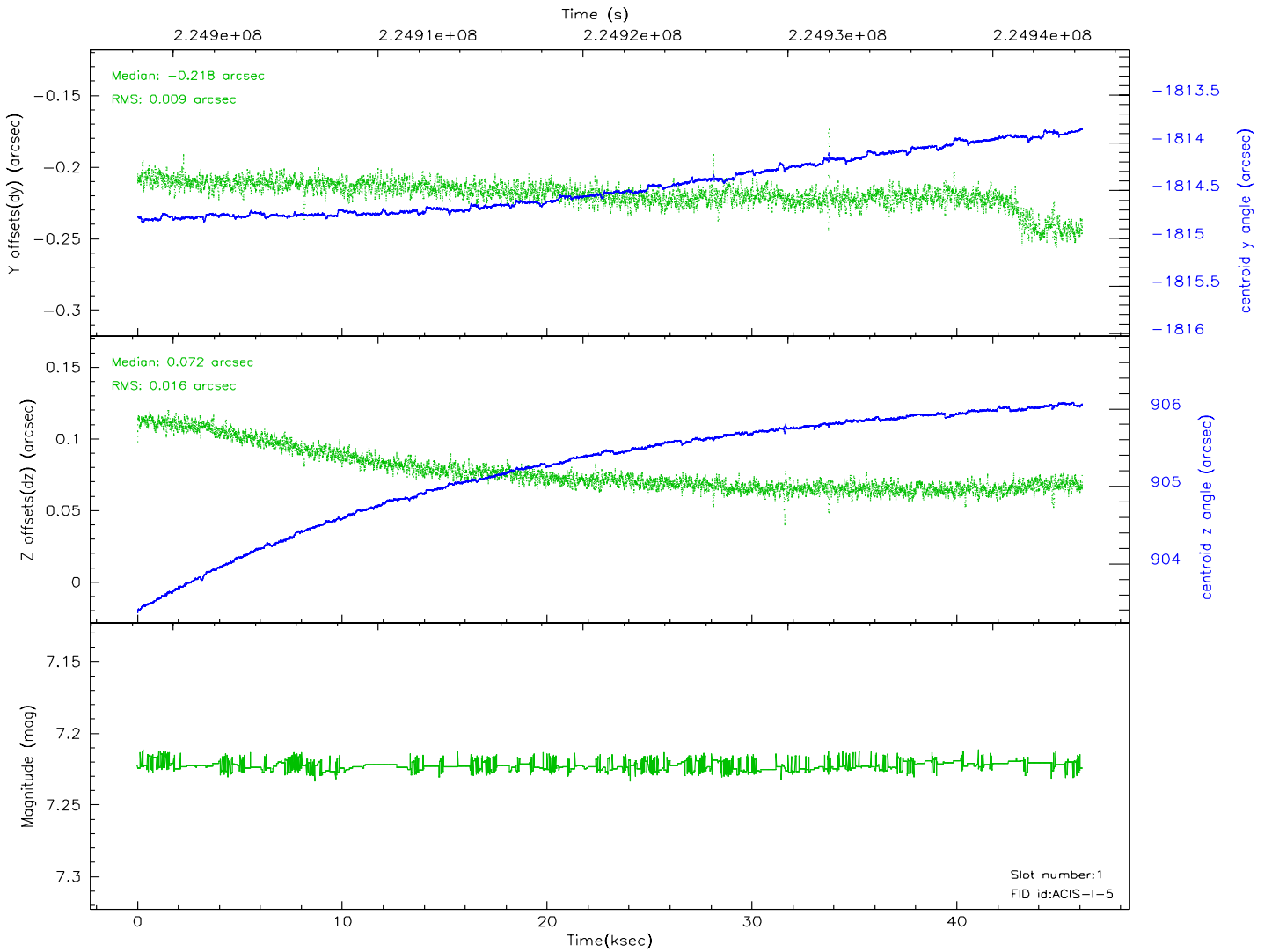
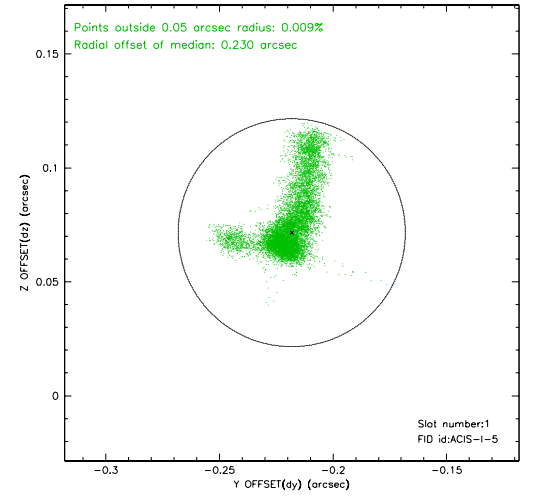
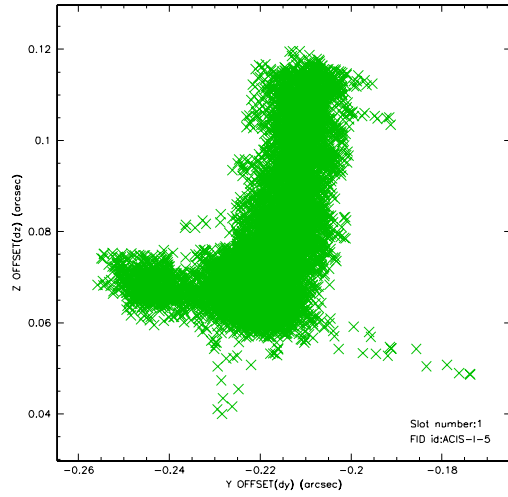


2.5 FID Slots

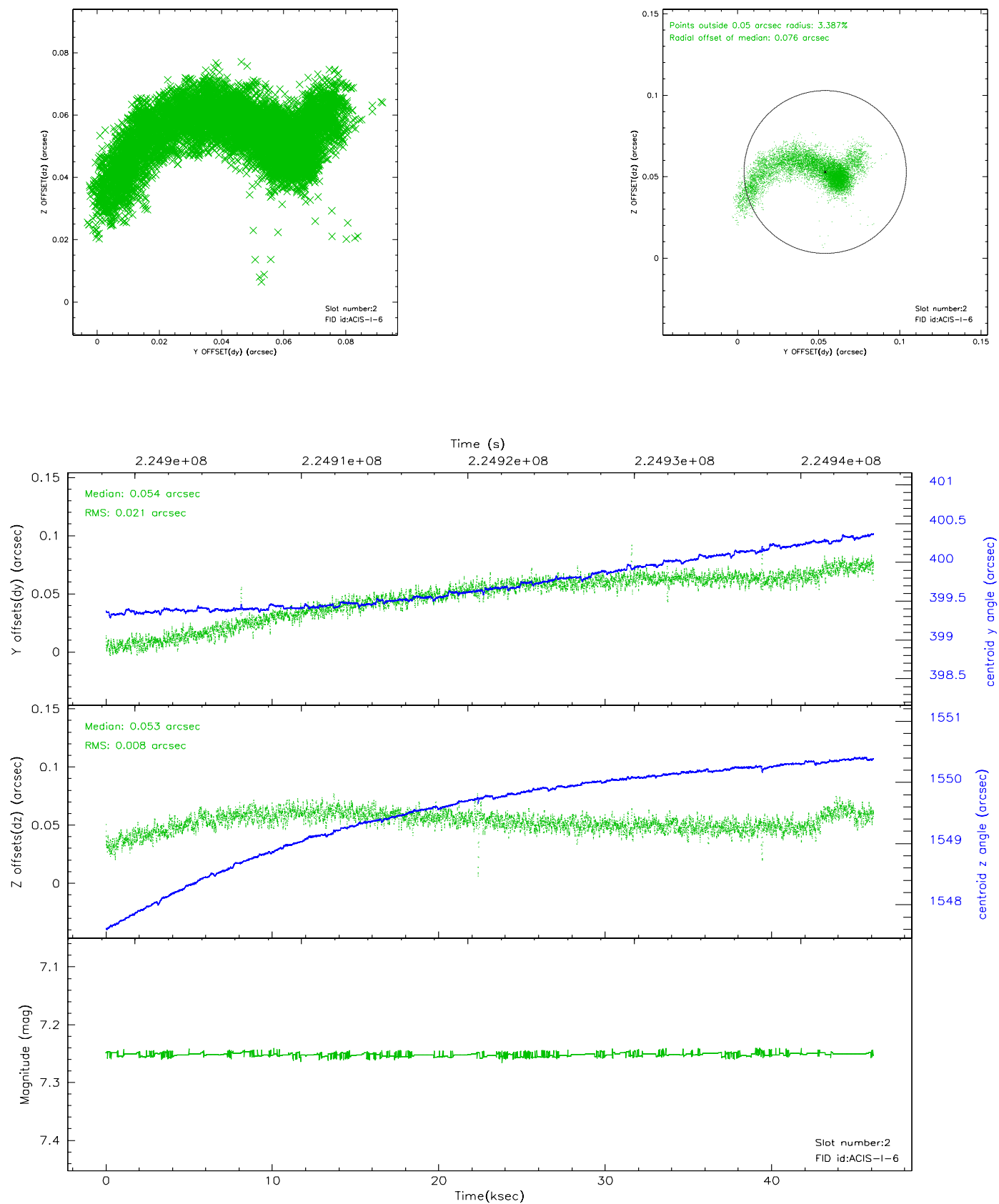
2.5.1 Slot 0



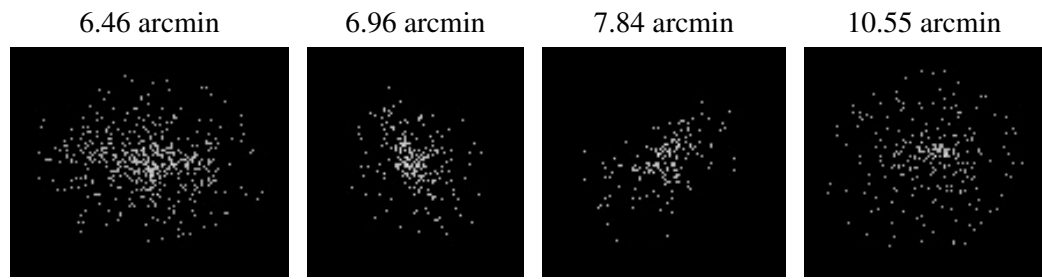
2.5.2 Slot 1



2.5.3 Slot 2



3 Point Sources



A Summary

A.1 Status

V&V Scientist	Beth Sundheim
V&V Date (YYYY-MM-DD)	2006.02.24
V&V Edition	1
V&V Disposition and Status	OK
V&V Charge Time	45.75889

A.2 Comments