

V&V Reference Report

L2 ASCDS Version : 7.6.7

Observation 5796 - L2 Version 002
Chandra X-Ray Center

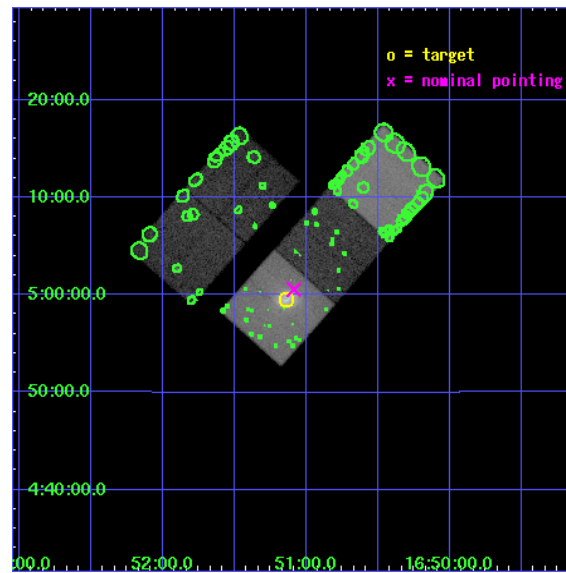
L2 Processing Date: Mar 3 2006

Contents

1	Front	2
2	OBI	3
2.1	OBI	3
2.1.1	Images	3
2.1.2	Bias	3
2.1.3	Parameters	4
2.1.4	Events	4
2.2	Compared Parameters	5
2.3	Aspect	6
2.4	Star Slots	9
2.4.1	Slot 3	9
2.4.2	Slot 4	10
2.4.3	Slot 5	11
2.4.4	Slot 6	12
2.4.5	Slot 7	13
2.5	FID Slots	14
2.5.1	Slot 0	14
2.5.2	Slot 1	15
2.5.3	Slot 2	16
3	Point Sources	17
A	Summary	18
A.1	Status	18
A.2	Comments	18

1 Front

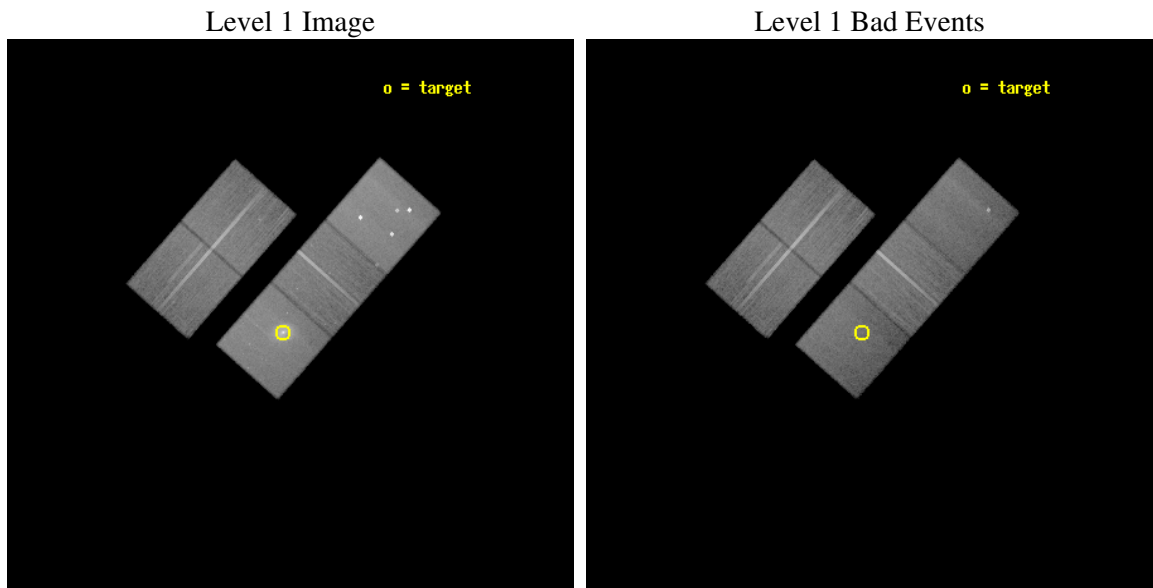
seq_num	800509
obs_id	5796
title	The Outburst in Hercules A
observer	Dr Paul Nulsen
object	Hercules A
dtcycle	0
cycle	P
ra_targ	252.784167
dec_targ	4.992722
ra_nom	252.77171506216
dec_nom	5.0093369606784
roll_nom	131.5003317197
revision	2
ontime	48173.958917111
livetime	47544.530678706
ontime2	48164.535956323
ontime3	48170.817926973
ontime5	48177.099907368
ontime6	48177.099907368
ontime7	48173.958917111
l2events	433048



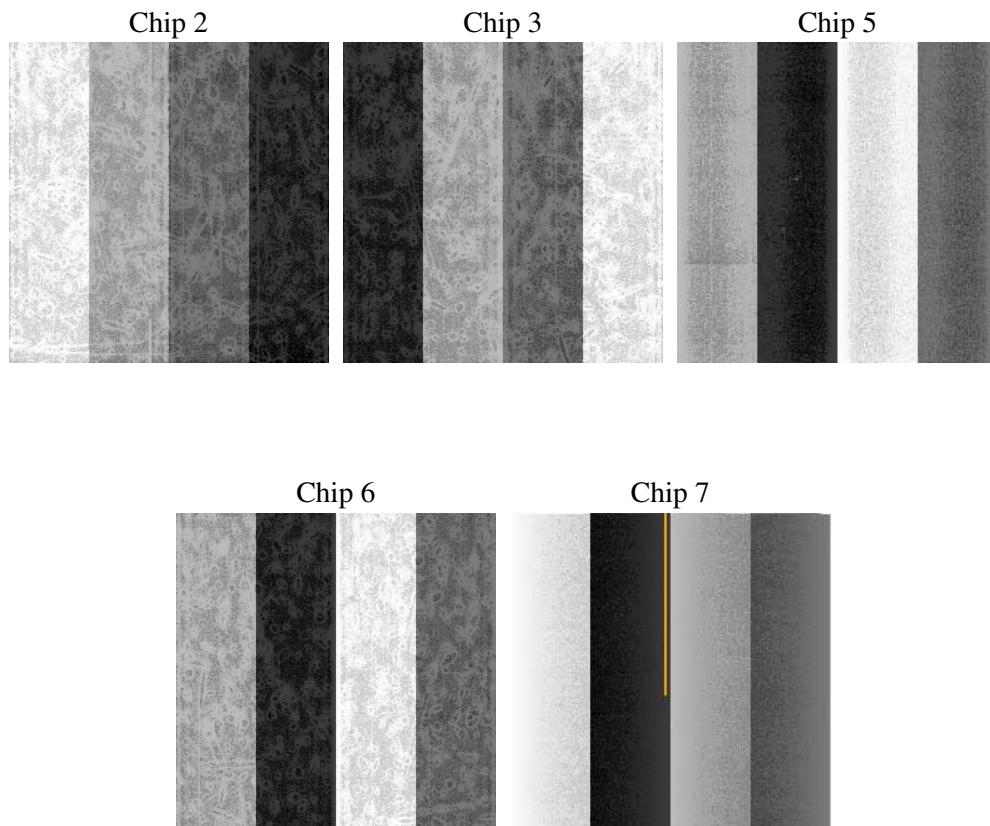
2 OBI

2.1 OBI

2.1.1 Images



2.1.2 Bias



2.1.3 Parameters

obi_num	1
ascdsver	7.6.7
caldbver	3.2.1
date	2006-03-03T10:13:01
revision	2

sched_exp_time	48000.000000
ontime	48867.882884502
ontime2	48861.600933909
ontime3	48867.882904559
ontime5	48871.023854852
ontime6	48871.023854852
ontime7	48867.882884502
l1events	1641477

2.1.4 Events

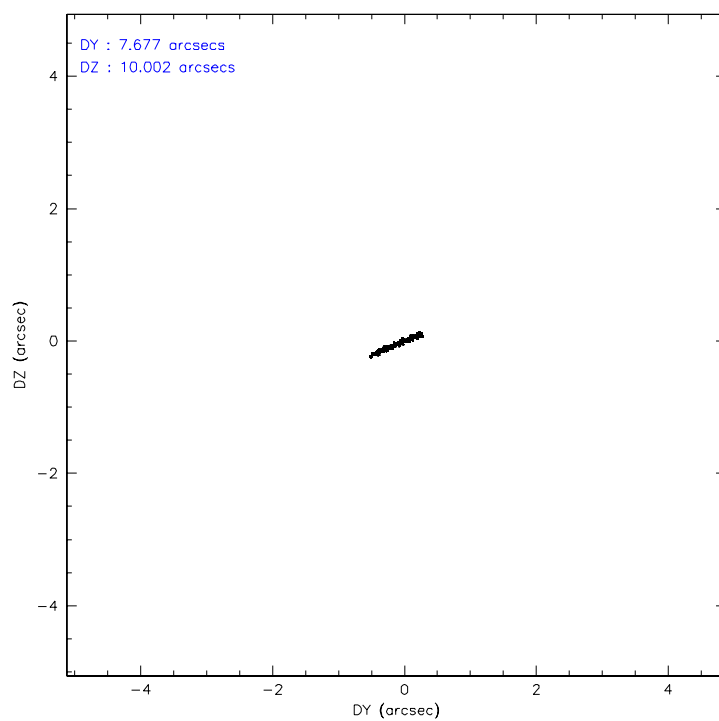
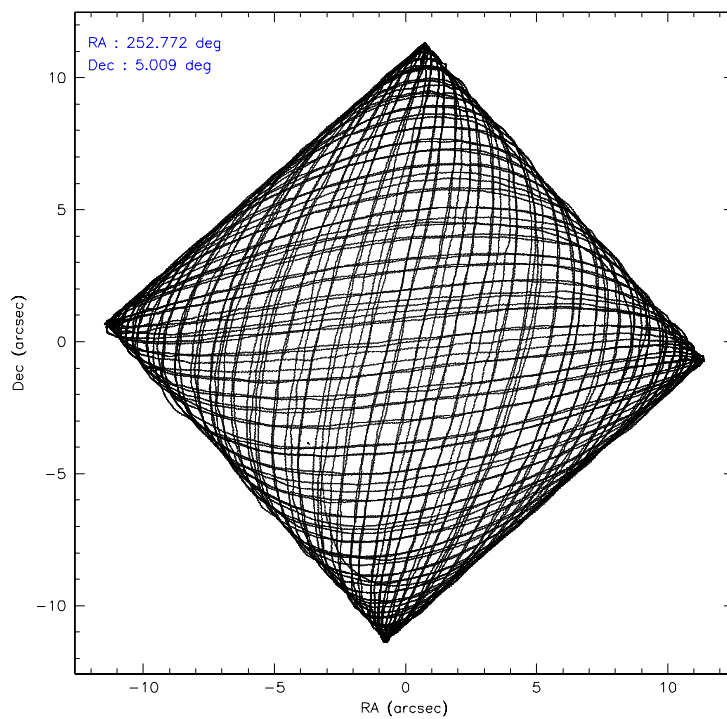
	ccd 2	ccd 3	ccd 5	ccd 6	ccd 7
level 1 events	294983	272132	419160	288460	366742
rejected events	264407	243448	206348	253716	185351
rejected %	89%	89%	49%	87%	50%

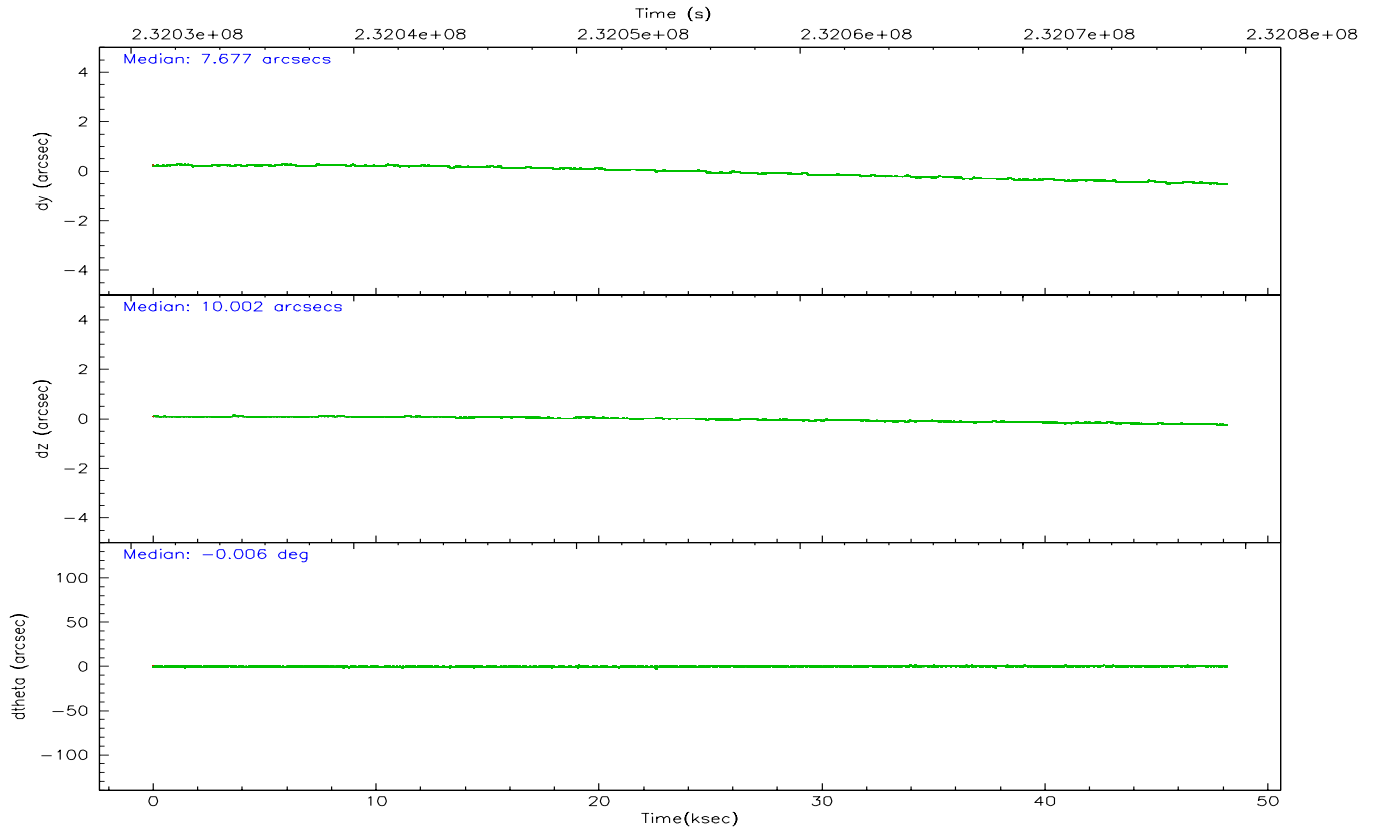
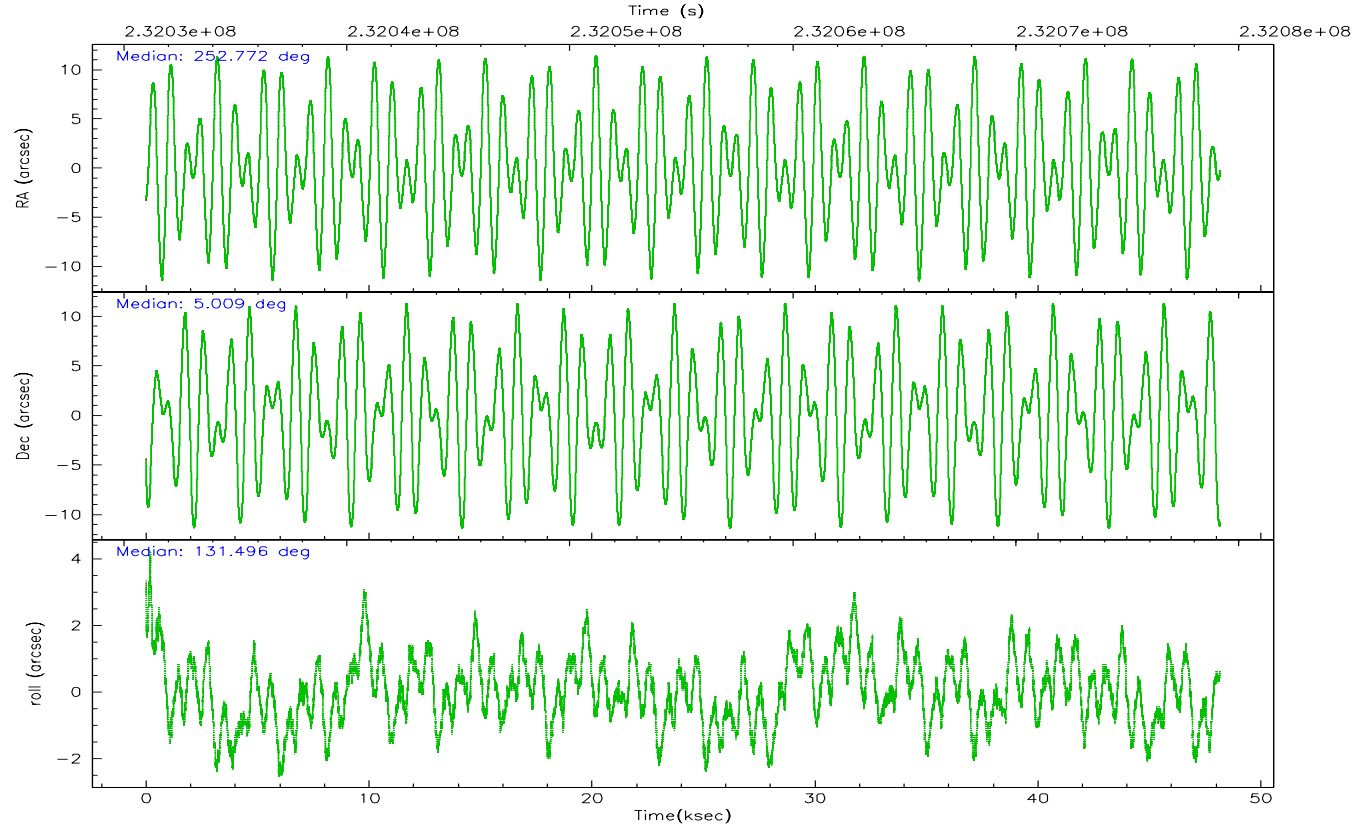
	ccd 2	ccd 3	ccd 5	ccd 6	ccd 7
grade 0 events	12976	11889	35291	15520	22754
	4%	4%	8%	5%	6%
grade 1 events	132	136	1699	140	154
	0%	0%	0%	0%	0%
grade 2 events	6673	5746	65126	6656	47300
	2%	2%	15%	2%	12%
grade 3 events	3046	3165	5702	3511	13176
	1%	1%	1%	1%	3%
grade 4 events	3226	3109	5613	3272	12948
	1%	1%	1%	1%	3%
grade 5 events	9329	11118	20687	11503	23684
	3%	4%	4%	3%	6%
grade 6 events	5107	5238	104063	6291	87412
	1%	1%	24%	2%	23%
grade 7 events	254494	231731	180979	241567	159314
	86%	85%	43%	83%	43%

2.2 Compared Parameters

Parameter	Planned	Actual	Parameter	Planned	Actual
Instrument	ACIS	ACIS	Obspar format version number	6	6
Detector	ACIS-23567	ACIS-23567	Obspar file type	PREDICTED	ACTUAL
Grating	NONE	NONE	Obspar update status	NONE	UPDATED
Data mode	VFAINT	VFAINT	On-chip summing requested	N	N
Observation mode	POINTING	POINTING	Subarray requested	NONE	NONE
Pointing RA	252.797737	252.7717150621598	Alternating exposures requested	N	N
Pointing Dec	5.001068	5.00933696067836	Primary exposure time	0.000000	3.1
Pointing Roll	131.341431	131.5003317197047			
SIM focus pos (mm)	-0.684267	-0.6828225247311905			
SIM defocus (mm)	0	0.001444936568705701			
SIM translation stage pos (mm)	-190.132523	-190.1400660498719			
SIM translation stage offset (mm)	0	0.00754346686406393			
Observation start time	232031173.184000	232029829.97767			
Observation start date	2005-05-09T13:05:09	2005-05-09T12:43:49			
Observation end time	232079173.184000	232079961.19245			
Observation end date	2005-05-10T02:25:09	2005-05-10T02:39:21			
Read mode	TIMED	TIMED			

2.3 Aspect



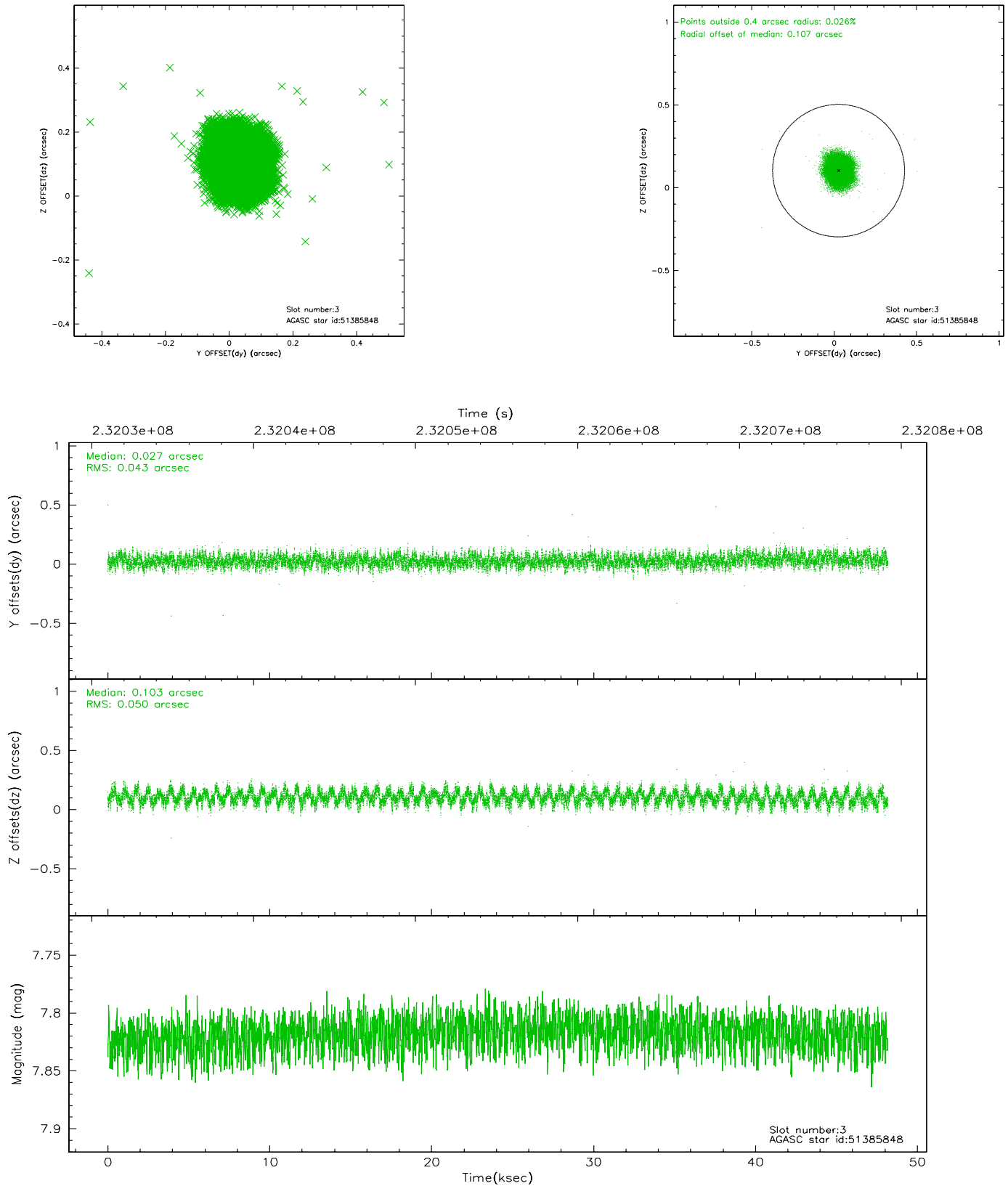


Slot Statistics

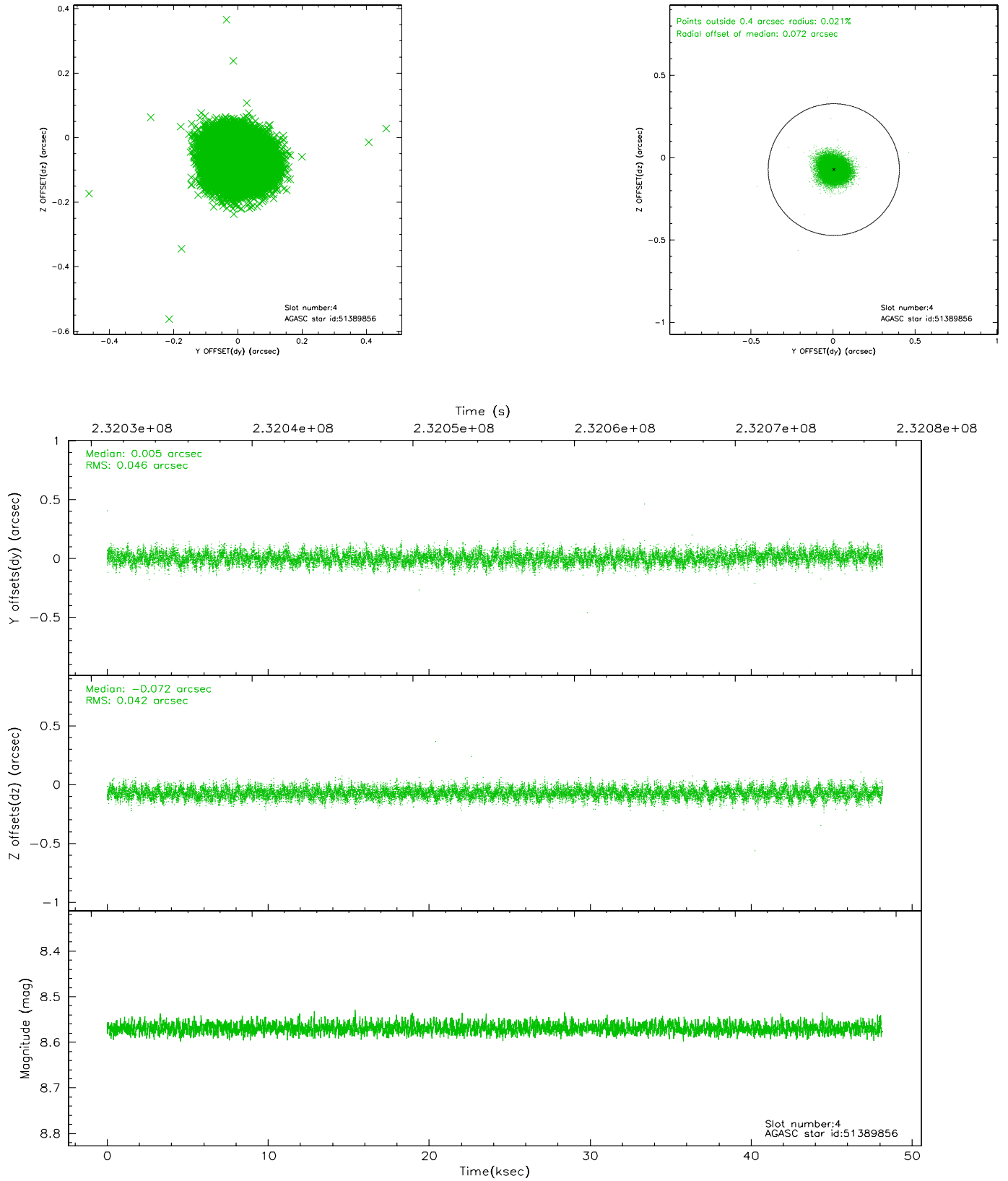
slot	status	id	mag	n_pts	med_dy	med_dz	dr1	dr2	ra	dec	mean_y	mean_z
0	FID	ACIS-S-1	7.19	11752	0.021	-0.014	0.008	0.014	0.000000	0.000000	935.67	-1726.86
1	FID	ACIS-S-5	7.24	11749	-0.055	0.018	0.009	0.016	0.000000	0.000000	-1813.42	170.72
2	FID	ACIS-S-6	7.35	11751	0.012	0.008	0.009	0.015	0.000000	0.000000	401.21	814.67
3	GUIDE	51385848	7.82	23502	0.027	0.103	0.071	0.109	252.745605	5.488999	1442.61	-1019.47
4	GUIDE	51389856	8.57	23498	0.005	-0.072	0.066	0.107	252.375344	5.365072	1984.56	271.08
5	GUIDE	51390960	7.67	23502	-0.029	0.134	0.071	0.117	253.089716	4.810839	-1205.41	-333.91
6	GUIDE	51398584	8.21	23499	0.030	-0.113	0.060	0.096	252.688107	4.451511	-1225.31	1602.23
7	GUIDE	51388904	8.22	23499	-0.034	-0.053	0.060	0.096	252.767239	4.783010	-517.37	601.02

2.4 Star Slots

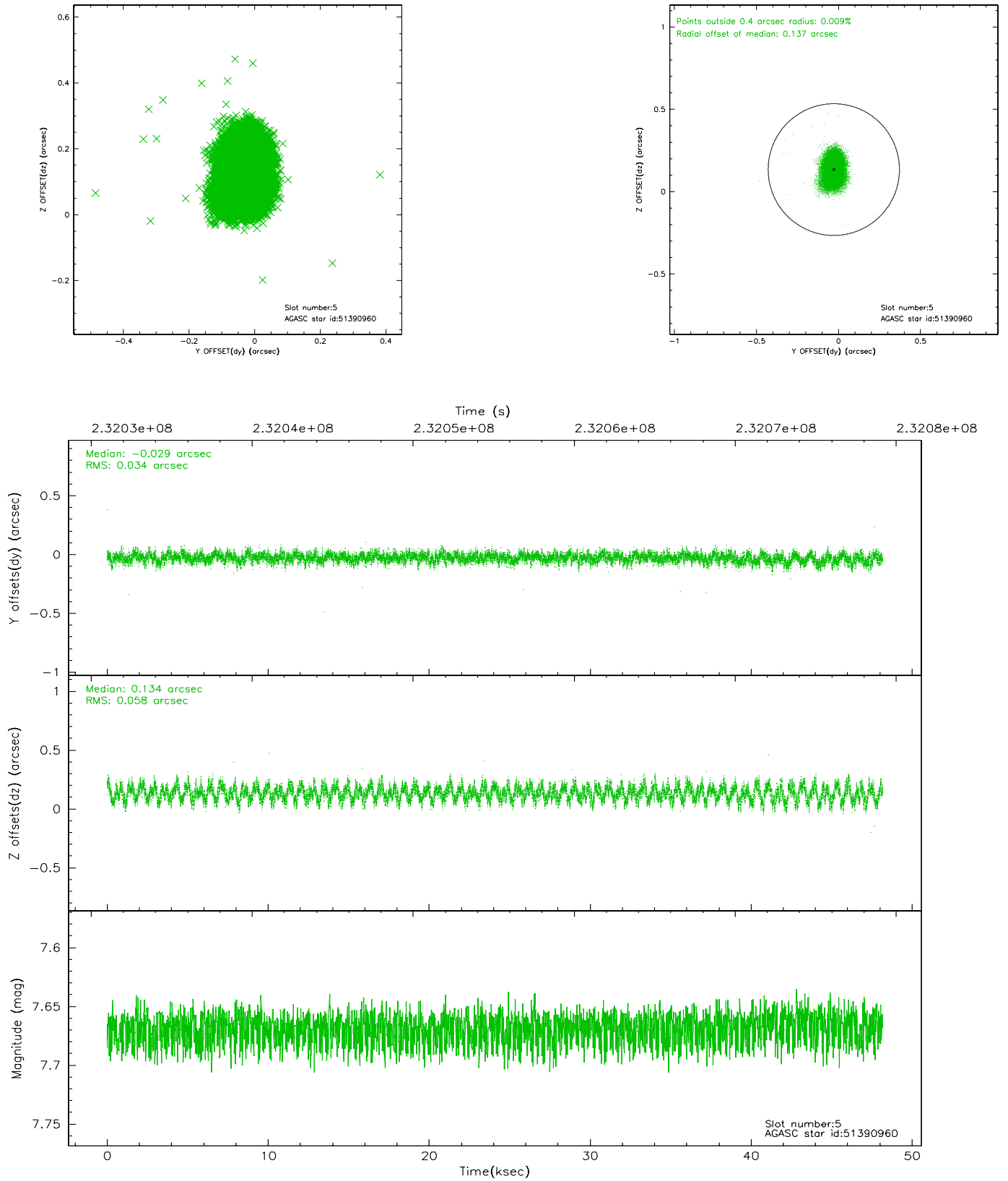
2.4.1 Slot 3



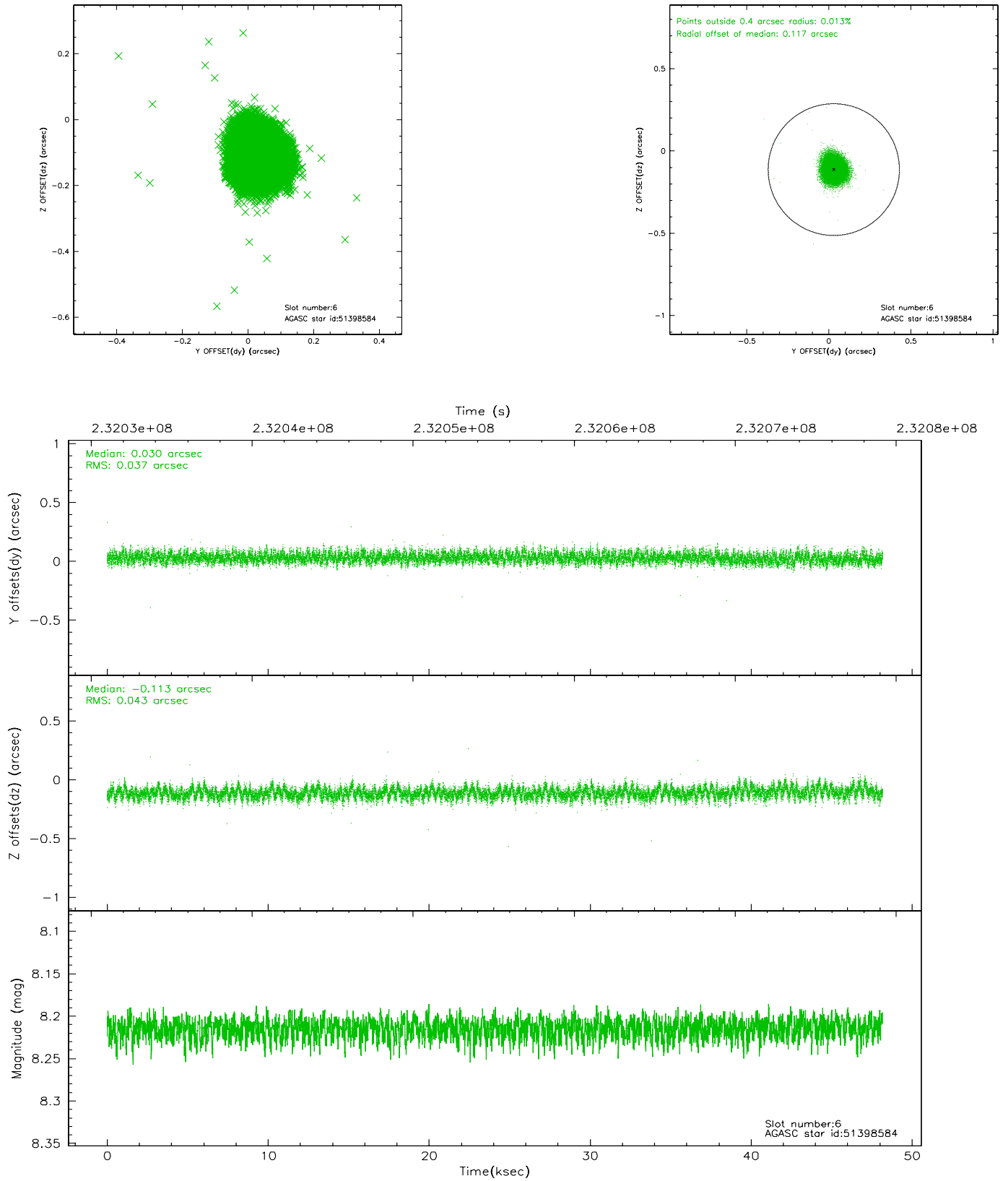
2.4.2 Slot 4



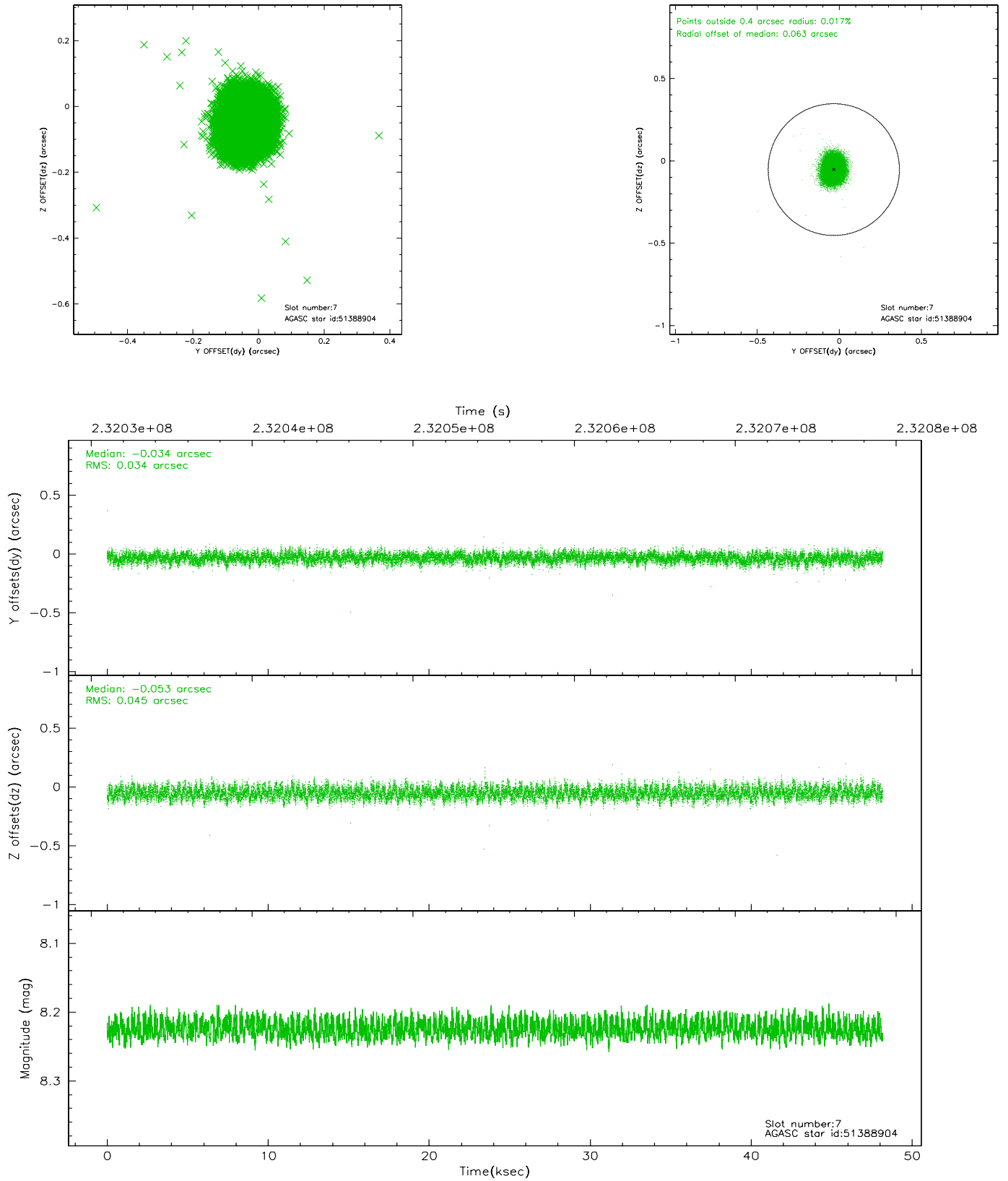
2.4.3 Slot 5



2.4.4 Slot 6

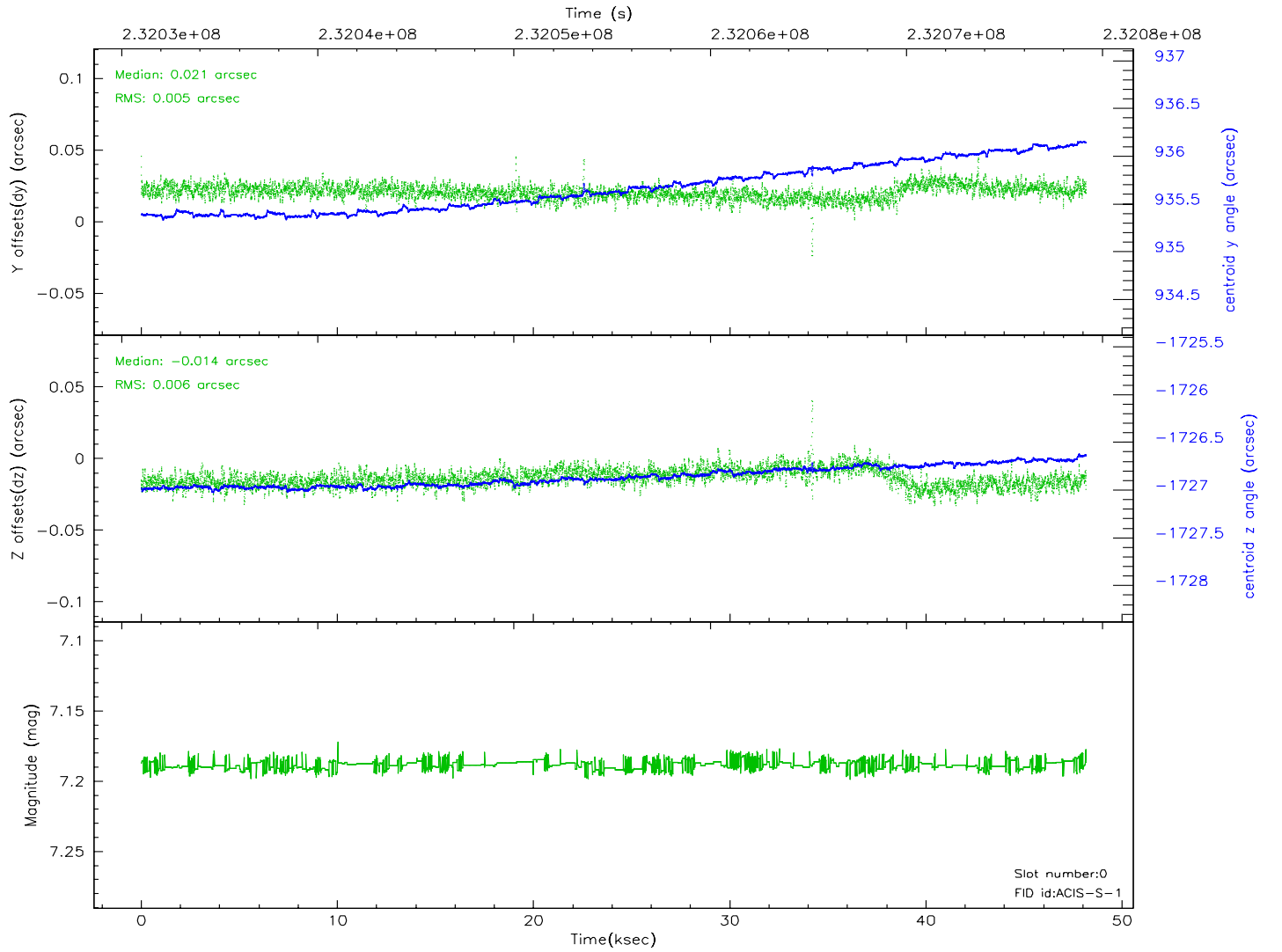
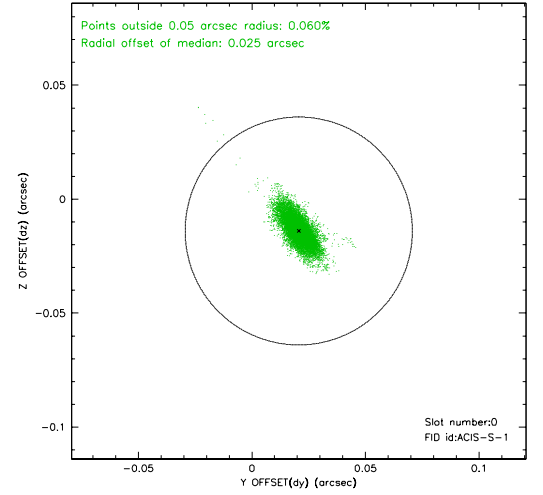
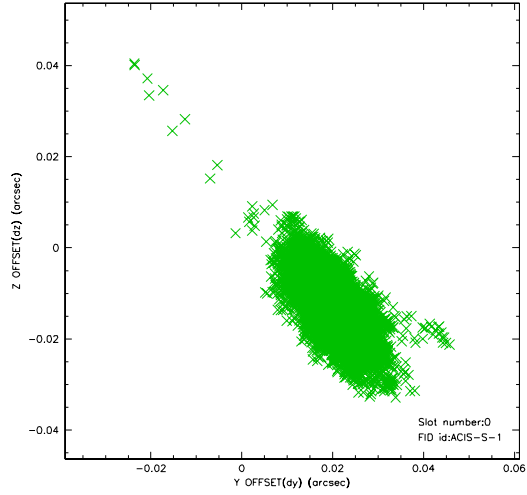


2.4.5 Slot 7

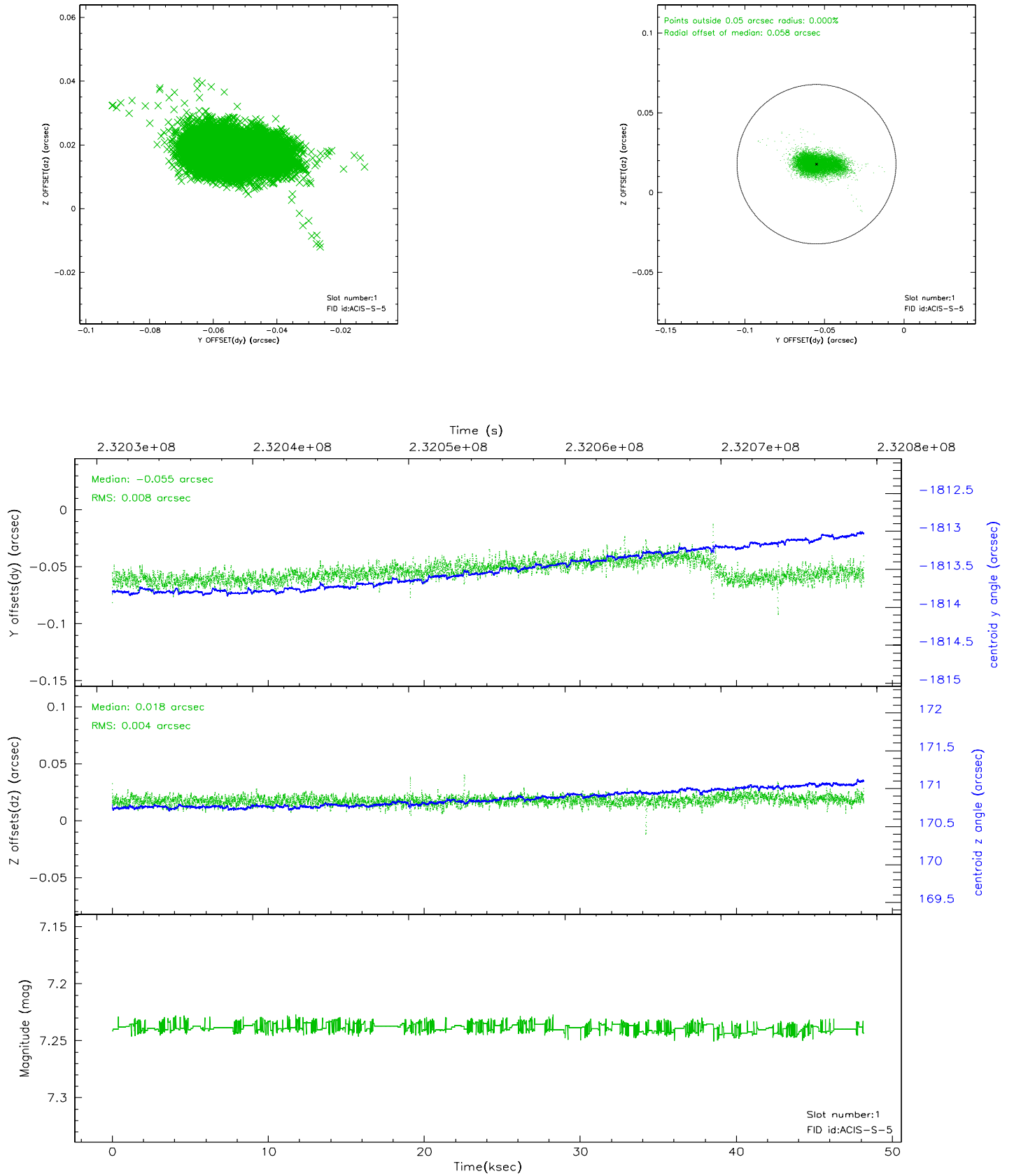


2.5 FID Slots

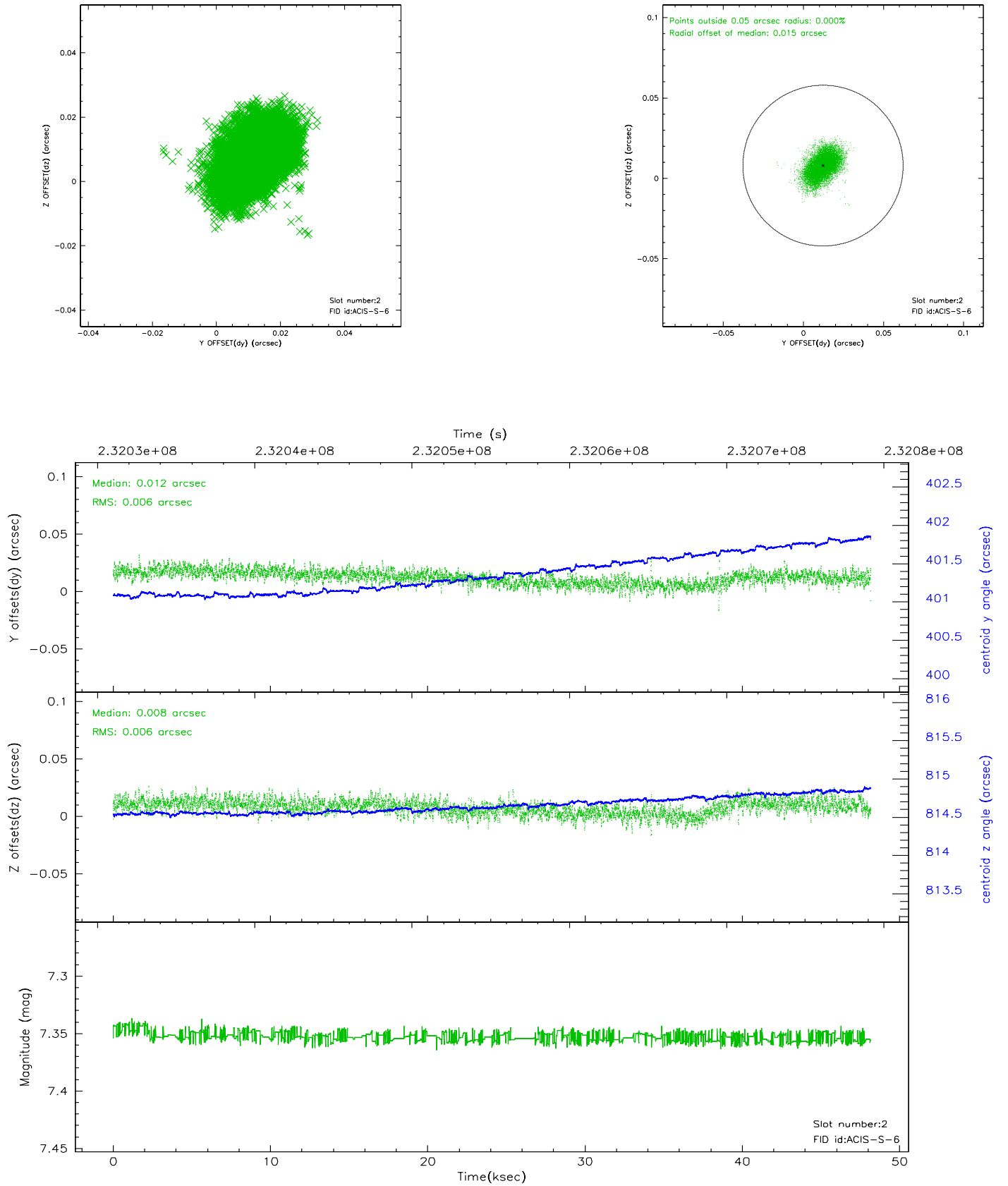
2.5.1 Slot 0



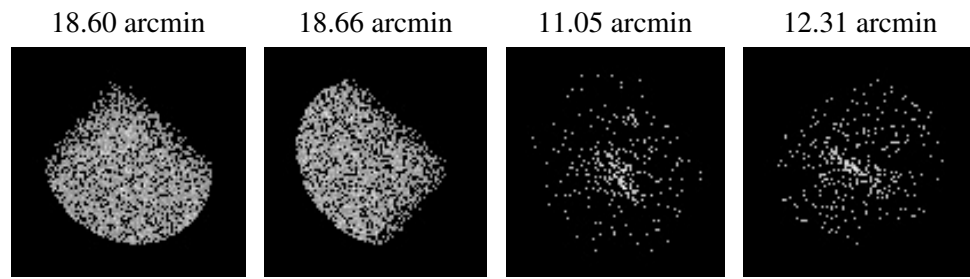
2.5.2 Slot 1



2.5.3 Slot 2



3 Point Sources



A Summary

A.1 Status

V&V Scientist	Beth Sundheim
V&V Date (YYYY-MM-DD)	2006.03.03
V&V Edition	1
V&V Disposition and Status	OK
V&V Charge Time	48.17395

A.2 Comments