

V&V Reference Report

L2 ASCDS Version : 8.4.3

Observation 55636 - L2 Version 2
Chandra X-Ray Center

L2 Processing Date : Feb 4 2012

Contents

1	Front	2
2	OBI	3
2.1	OBI	3
2.1.1	Images	3
2.1.2	Bias	3
2.1.3	Parameters	4
2.1.4	Events	4
2.2	Compared Parameters	5
2.3	Star Slots	6
2.4	FID Slots	6
A	Summary	7
A.1	Status	7
A.2	Comments	7

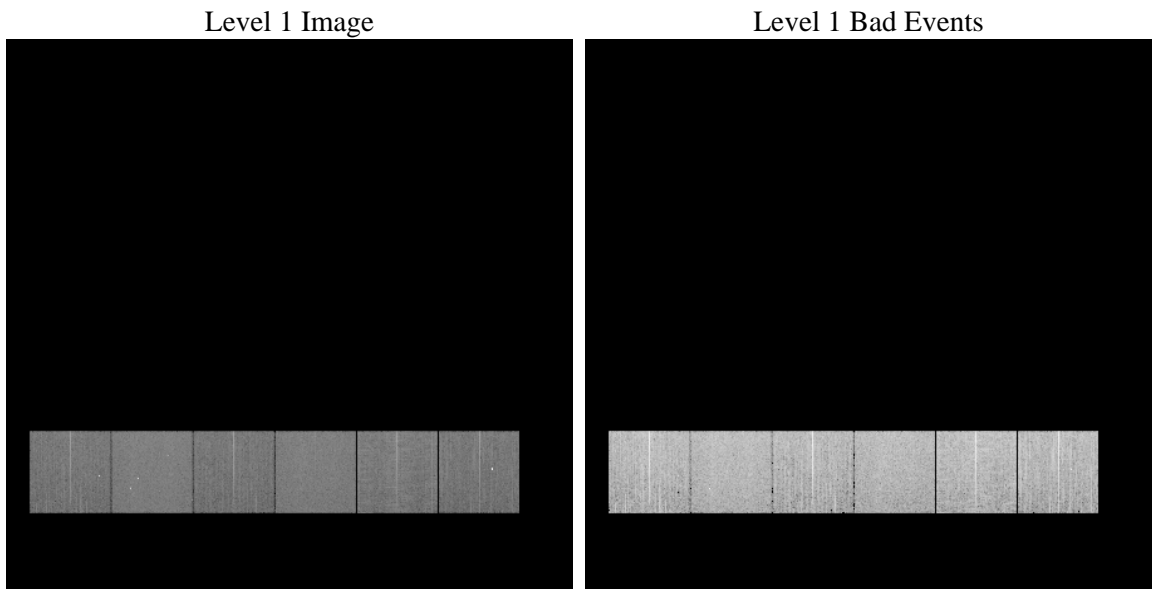
1 Front

seq_num	 	Sequence number
obs_id	55636	Observation id
title	ACIS-456789 diagnostics	Proposal title
observer	CHANDRA engineering request/realtime commanding	Principal investig
object	 	Source name
dtcycle	0	
cycle	P	events from which exps? Prim/Second/Both
ra_targ	0.0	Observer's specified target RA [deg]
dec_targ	0.0	Observer's specified target Dec [deg]
ra_nom	138.02916053752	Nominal RA [deg]
dec_nom	-10.000126803876	Nominal Dec [deg]
roll_nom	326.79221350289	Nominal Roll [deg]
revision	2	Processing version of data
ontime	8284.0351043344	Sum of GTIs [s]
livetime	8179.1376637962	Livetime [s]
ontime4	8283.9119843245	Sum of GTIs [s]
ontime5	8283.9940643311	Sum of GTIs [s]
ontime6	8283.9530243278	Sum of GTIs [s]
ontime7	8284.0351043344	Sum of GTIs [s]
ontime8	8283.8709443212	Sum of GTIs [s]
ontime9	8284.0761443377	Sum of GTIs [s]
l2events	363887	Number of level 2 events

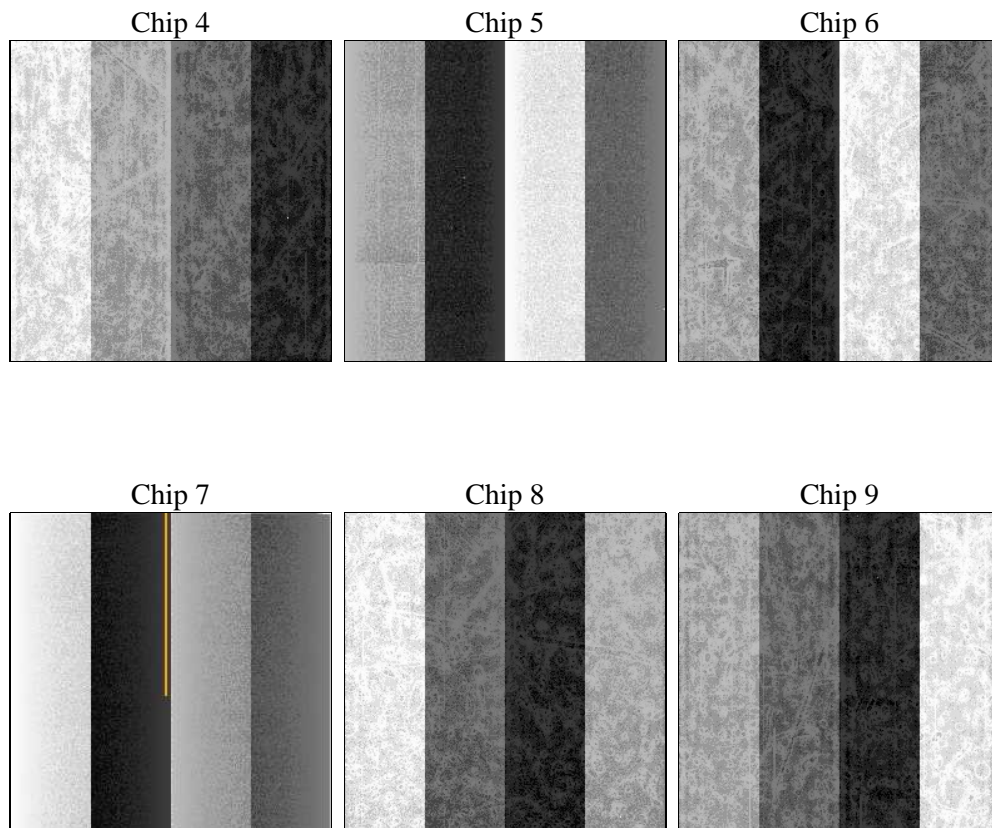
2 OBI

2.1 OBI

2.1.1 Images



2.1.2 Bias



2.1.3 Parameters

obi_num	0	Obi number	sched_exp_time	0.0	[s] Scheduled observation exposure time
ascdsver	8.4.3	Processing system revision	ontime	8284.0351043344	Sum of GTIs [s]
caldsver	4.4.7	 	ontime4	8283.9119843245	Sum of GTIs [s]
date	2012-02-04T08:52:18	Date and time of file creation	ontime5	8283.9940643311	Sum of GTIs [s]
revision	2	Processing version of data	ontime6	8283.9530243278	Sum of GTIs [s]
			ontime7	8284.0351043344	Sum of GTIs [s]
			ontime8	8283.8709443212	Sum of GTIs [s]
			ontime9	8284.0761443377	Sum of GTIs [s]
			l1events	790312	Number of level 1 events

2.1.4 Events

	ccd 4	ccd 5	ccd 6	ccd 7	ccd 8	ccd 9		ccd 4	ccd 5	ccd 6	ccd 7	ccd 8	ccd 9
level 1 events	119450	150142	115967	144173	136387	124193	grade 0 events	30699	11650	28090	14513	32045	30438
rejected events	65889	63428	61286	59987	69308	65246		25%	7%	24%	10%	23%	24%
rejected %	55%	42%	52%	41%	50%	52%	grade 1 events	246	176	169	121	201	225
								0%	0%	0%	0%	0%	0%
							grade 2 events	8560	30972	10138	18430	12827	12577
								7%	20%	8%	12%	9%	10%
							grade 3 events	3738	3567	3518	7629	5016	3662
								3%	2%	3%	5%	3%	2%
							grade 4 events	3662	3418	3580	7470	4887	3689
								3%	2%	3%	5%	3%	2%
							grade 5 events	3709	8383	3801	9373	5045	4207
								3%	5%	3%	6%	3%	3%
							grade 6 events	6902	37107	9355	36144	12304	8581
								5%	24%	8%	25%	9%	6%
							grade 7 events	61934	54869	57316	50493	64062	60814
								51%	36%	49%	35%	46%	48%

2.2 Compared Parameters

Parameter	Planned	Actual
Instrument	ACIS	ACIS
Detector	ACIS-456789	ACIS-456789
Grating	NONE	NONE
Data mode	FAINT	FAINT
Observation mode	SECONDARY	SECONDARY
[deg] Pointing RA	0	138.0291605375157
[deg] Pointing Dec	0	-10.00012680387559
[deg] Pointing Roll	0.0	326.7922135028854
[mm] SIM focus pos	-1.429586	-1.428180813131781
[mm] SIM defocus	0.1037507710433287	0.1051558262725154
[mm] SIM translation stage pos	250.455976	250.466033080201
[mm] SIM translation stage offset	0	-0.01005468664627074
[s] Observation start time (MET)	414467665.72938	414467664.70438
Observation start date	2011-02-19T01:54:26	2011-02-19T01:54:24
[s] Observation end time (MET)	414480219.93003	414480218.90503
Observation end date	2011-02-19T05:23:40	2011-02-19T05:23:38
Read mode	TIMED	TIMED

Parameter	Planned	Actual
Obspar format version number	7	7
Obspar file type	PREDICTED	ACTUAL
Obspar update status	NONE	UPDATED
Number of optional ACIS chips dropped	0	0
On-chip summing requested	N	N
Subarray requested	NONE	NONE
Alternating exposures requested	N	N
[s] Primary exposure time	3.2	3.2

2.3 Star Slots

2.4 FID Slots

A Summary

A.1 Status

V&V Scientist	Jen Lauer
V&V Date (YYYY-MM-DD)	2012.02.07
V&V Edition	1
V&V Disposition and Status	OK
V&V Charge Time	8.2840351043344

A.2 Comments