

V&V Reference Report

L2 ASCDS Version : 8.5.1.1

Observation 5536 - L2 Version 3
Chandra X-Ray Center

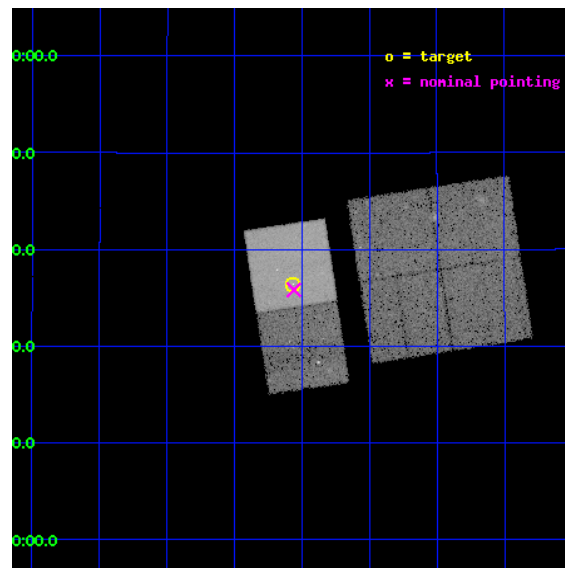
L2 Processing Date : Dec 30 2012

Contents

1	Front	2
2	OBI	3
2.1	OBI	3
2.1.1	Images	3
2.1.2	Bias	3
2.1.3	Parameters	4
2.1.4	Events	4
2.2	Compared Parameters	5
2.3	Aspect	6
2.4	Star Slots	9
2.4.1	Slot 3	9
2.4.2	Slot 4	10
2.4.3	Slot 5	11
2.4.4	Slot 6	12
2.4.5	Slot 7	13
2.5	FID Slots	14
2.5.1	Slot 0	14
2.5.2	Slot 1	15
2.5.3	Slot 2	16
A	Summary	17
A.1	Status	17
A.2	Comments	17

1 Front

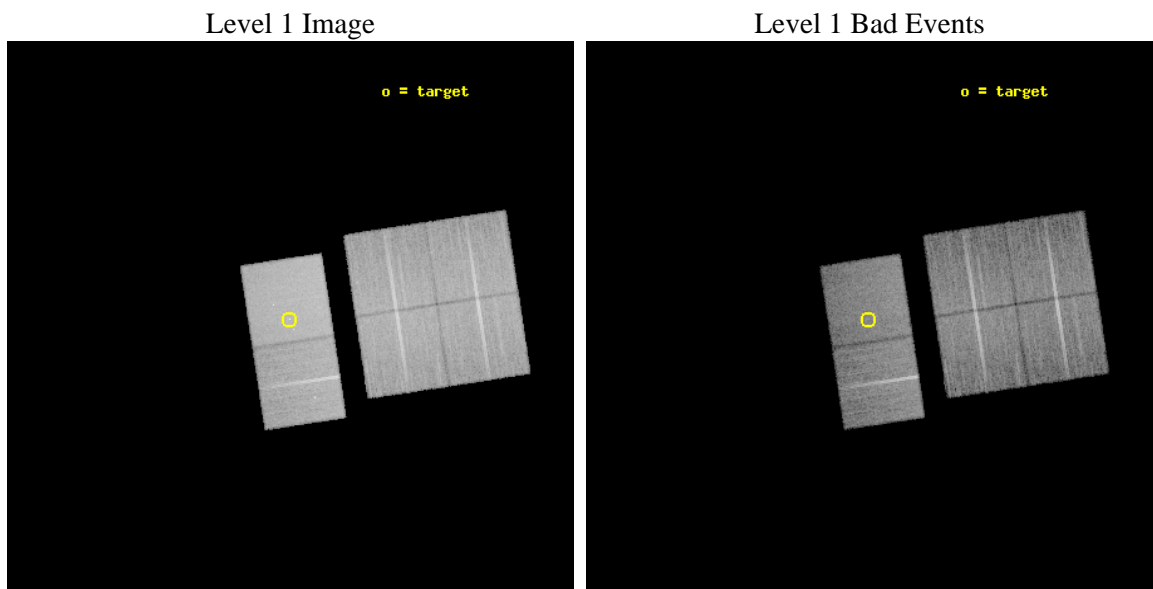
seq_num	500529	Sequence number
obs_id	5536	Observation id
title	Probing the nature of Dark GRBs using Swift and Chandra in Synergy	
observer	Dr. CHRYSSA KOUVELIOTOU	Principal investigator
object	GRB051022	Source name
dtcycle	0	
cycle	P	events from which exps? Prim/Second/Both
ra_targ	359.0183	Observer's specified target RA [deg]
dec_targ	19.6065	Observer's specified target Dec [deg]
ra_nom	359.01501818964	Nominal RA [deg]
dec_nom	19.597358971726	Nominal Dec [deg]
roll_nom	261.3237750702	Nominal Roll [deg]
revision	3	Processing version of data
ontime	18963.199929357	Sum of GTIs [s]
livetime	18723.076473583	Livetime [s]
ontime0	18959.958958983	Sum of GTIs [s]
ontime1	18963.199929357	Sum of GTIs [s]
ontime2	18963.199929357	Sum of GTIs [s]
ontime3	18959.958929181	Sum of GTIs [s]
ontime6	18963.199929357	Sum of GTIs [s]
ontime7	18963.199929357	Sum of GTIs [s]
l2events	158424	Number of level 2 events



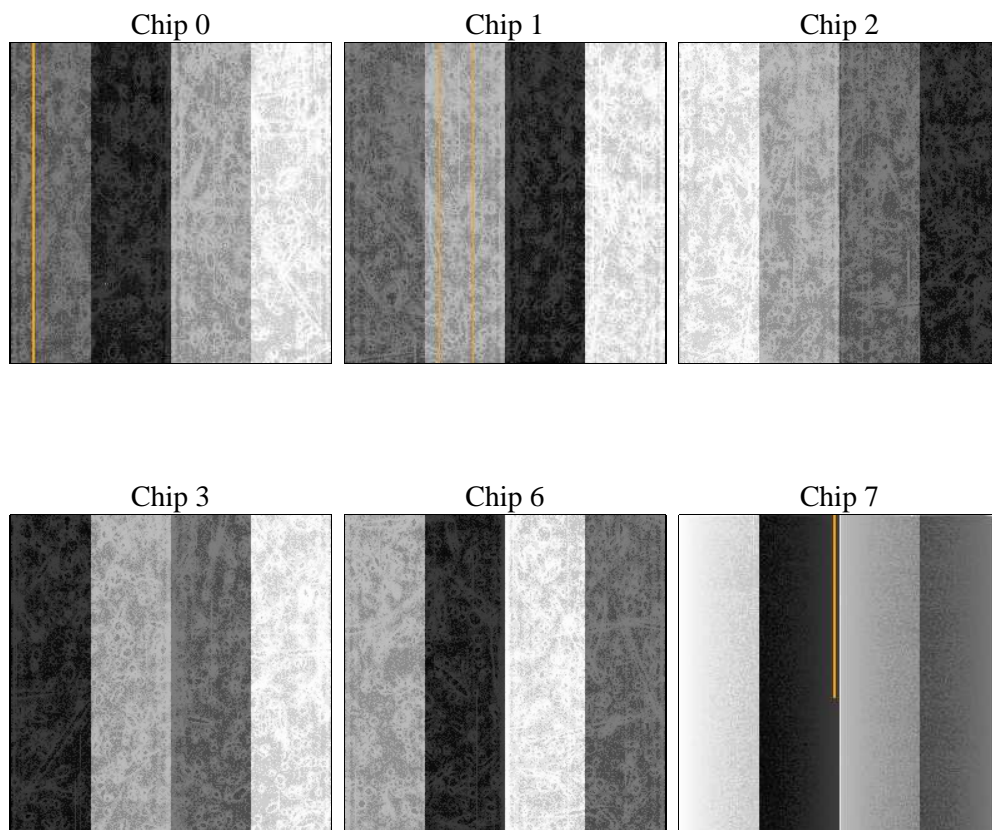
2 OBI

2.1 OBI

2.1.1 Images



2.1.2 Bias



2.1.3 Parameters

obi_num	0	Obi number	sched_exp_time	18800.000000	[s] Scheduled observation exposure time
ascdsver	8.5.1.1	Processing system revision	ontime	18963.199929357	Sum of GTIs [s]
caldsver	4.5.5	 	ontime0	18959.958958983	Sum of GTIs [s]
date	2012-12-30T22:50:01	Date and time of file creation	ontime1	18963.199929357	Sum of GTIs [s]
revision	3	Processing version of data	ontime2	18963.199929357	Sum of GTIs [s]
			ontime3	18959.958929181	Sum of GTIs [s]
			ontime6	18963.199929357	Sum of GTIs [s]
			ontime7	18963.199929357	Sum of GTIs [s]
			l1events	992318	Number of level 1 events

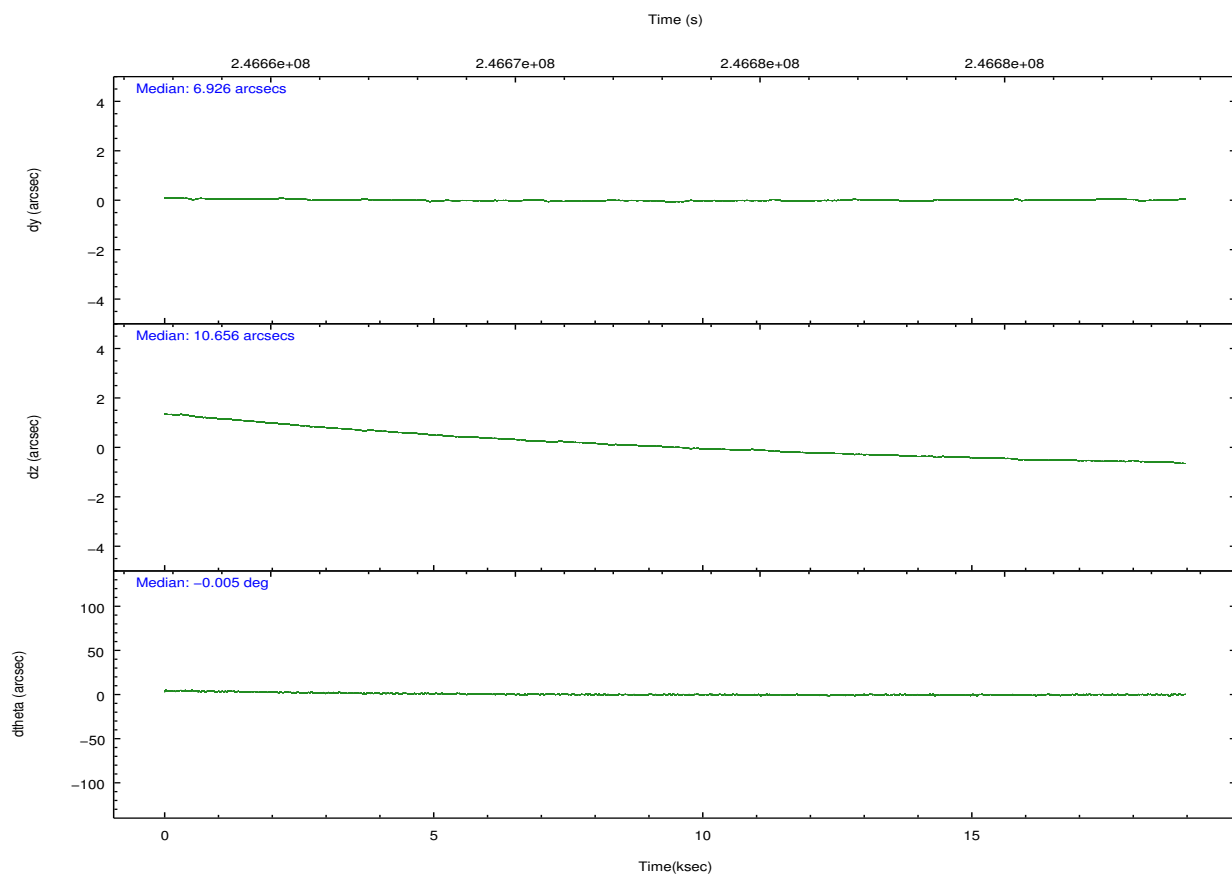
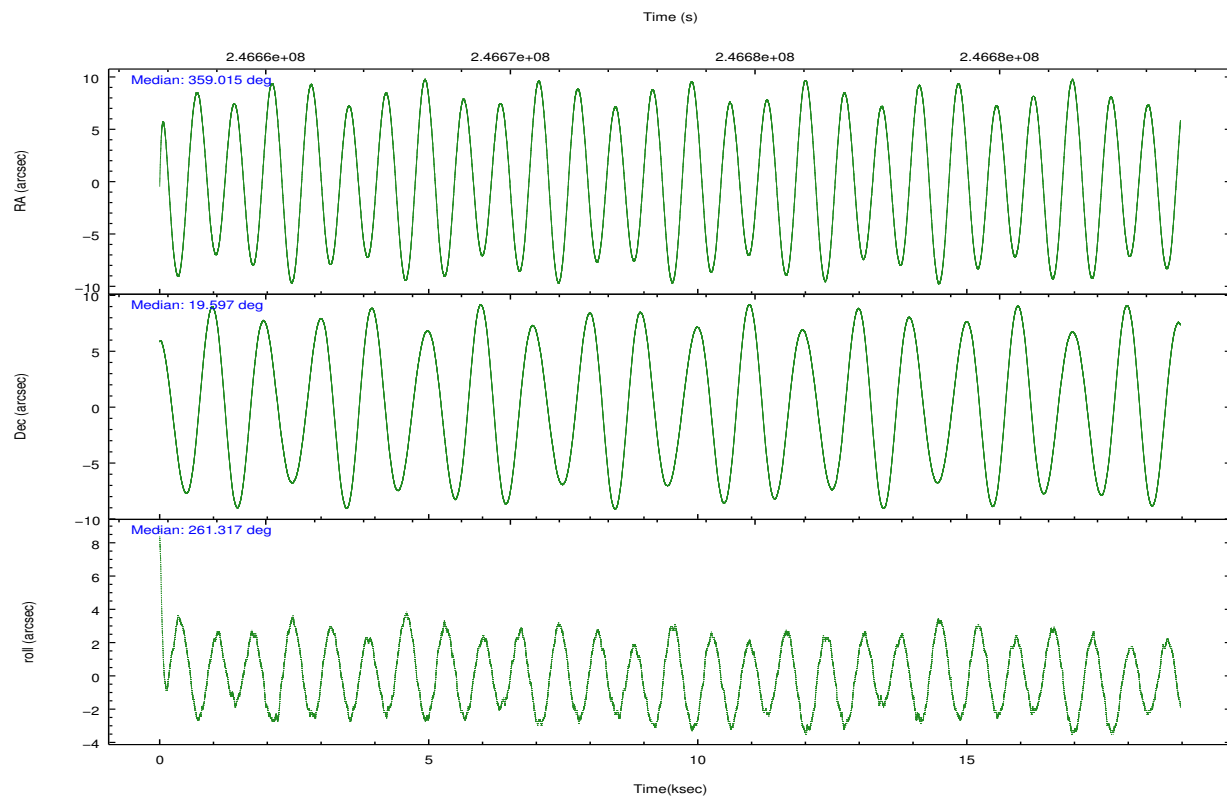
2.1.4 Events

	ccd 0	ccd 1	ccd 2	ccd 3	ccd 6	ccd 7		ccd 0	ccd 1	ccd 2	ccd 3	ccd 6	ccd 7
level 1 events	150999	147930	158711	151874	163193	219611	grade 0 events	7912	8182	8147	8020	7889	8112
rejected events	133617	129187	141821	134890	145220	135350		5%	5%	5%	5%	4%	3%
rejected %	88%	87%	89%	88%	88%	61%	grade 1 events	93	80	96	84	85	203
								0%	0%	0%	0%	0%	0%
							grade 2 events	4234	4292	3746	3613	4040	18241
								2%	2%	2%	2%	2%	8%
							grade 3 events	1747	1932	1717	1812	1835	8123
								1%	1%	1%	1%	1%	3%
							grade 4 events	1692	1984	1732	1788	1855	7960
								1%	1%	1%	1%	1%	3%
							grade 5 events	6575	6974	6018	7091	7745	21069
								4%	4%	3%	4%	4%	9%
							grade 6 events	3348	3896	3051	3270	3915	48972
								2%	2%	1%	2%	2%	22%
							grade 7 events	125398	120590	134204	126196	135829	106931
								83%	81%	84%	83%	83%	48%

2.2 Compared Parameters

Parameter	Planned	Actual	Parameter	Planned	Actual
Instrument	ACIS	ACIS	Obspar format version number	7	7
Detector	ACIS-012367	ACIS-012367	Obspar file type	PREDICTED	ACTUAL
Grating	NONE	NONE	Obspar update status	NONE	UPDATED
Data mode	VFAINT	VFAINT	Number of optional ACIS chips dropped	0	0
Observation mode	POINTING	POINTING	On-chip summing requested	N	N
[deg] Pointing RA	359.004155	359.015018189637	Subarray requested	NONE	NONE
[deg] Pointing Dec	19.622606	19.59735897172559	Alternating exposures requested	N	N
[deg] Pointing Roll	261.170789	261.3237750701985	[s] Primary exposure time	0.000000	3.2
[mm] SIM focus pos	-0.684267	-0.6828225247311905			
[mm] SIM defocus	0	0.001444936568705701			
[mm] SIM translation stage pos	-190.132523	-190.1425803651734			
[mm] SIM translation stage offset	0	0.01005778216563158			
[s] Observation start time (MET)	246663946.184000	246662060.298			
Observation start date	2005-10-25T21:44:42	2005-10-25T21:14:20			
[s] Observation end time (MET)	246682746.184000	246683711.8865			
Observation end date	2005-10-26T02:58:02	2005-10-26T03:15:11			
Read mode	TIMED	TIMED			

2.3 Aspect

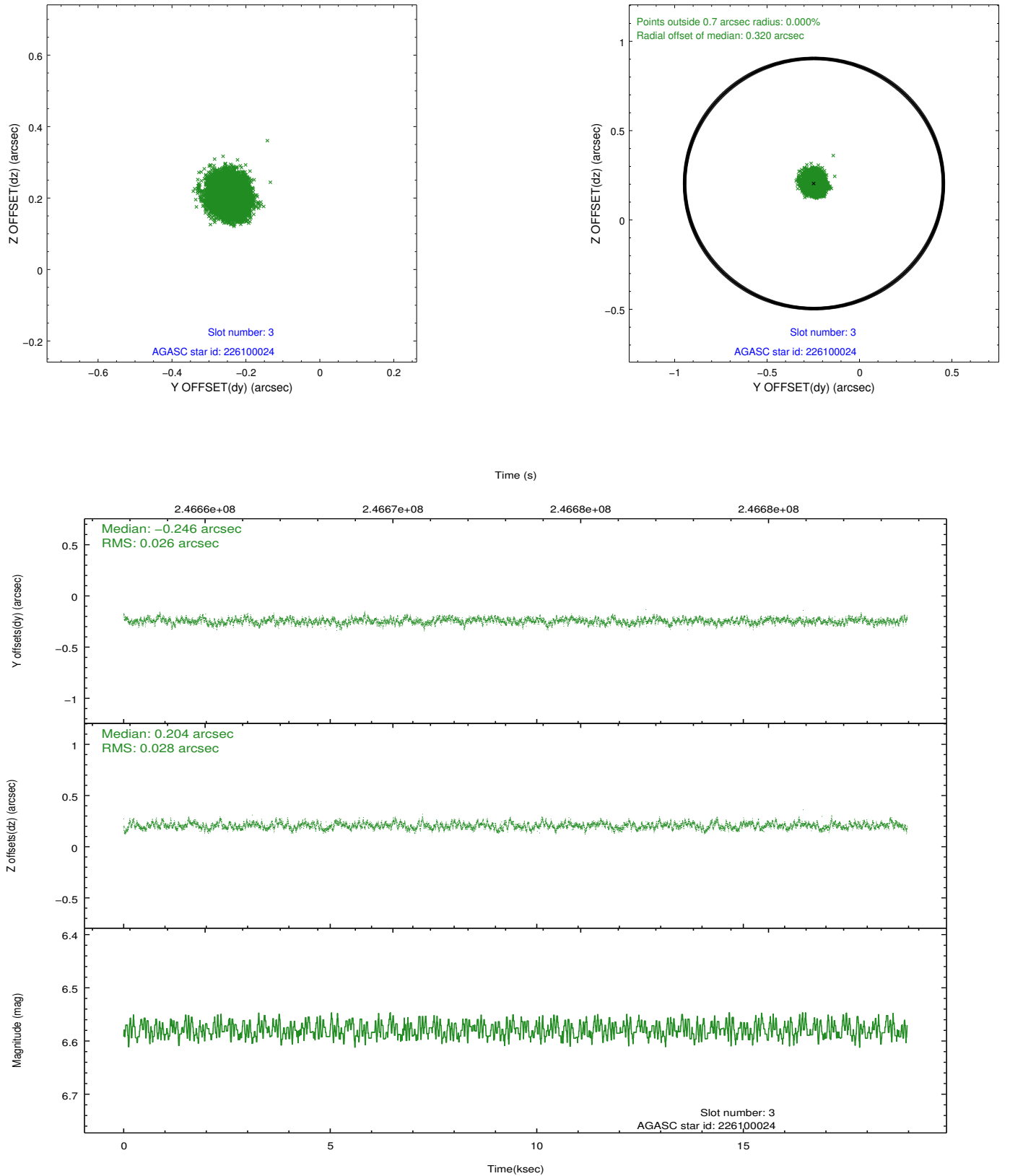


Slot Statistics

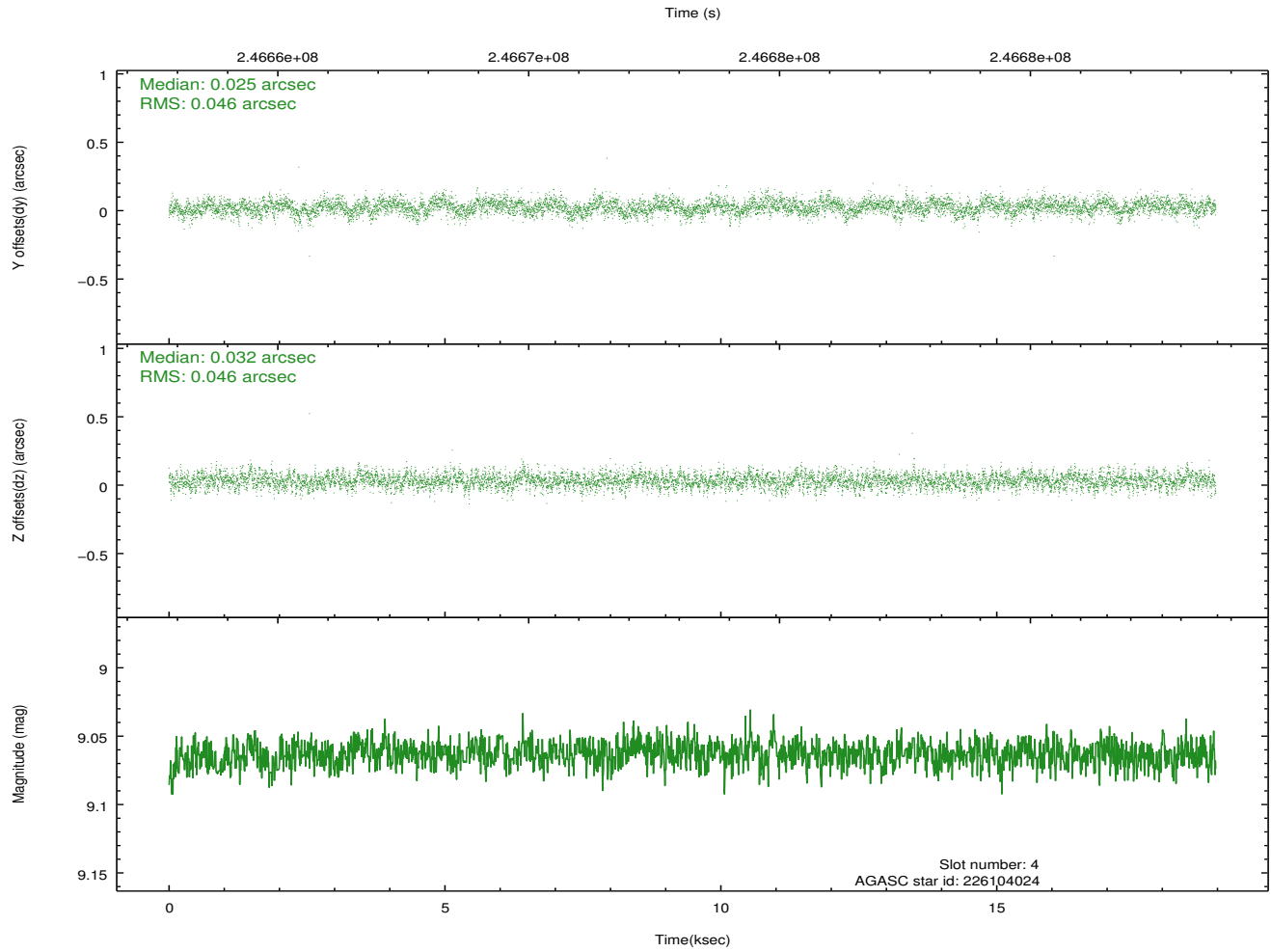
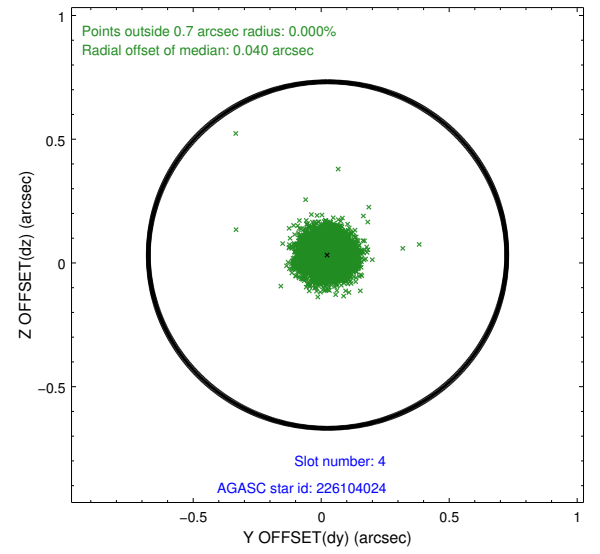
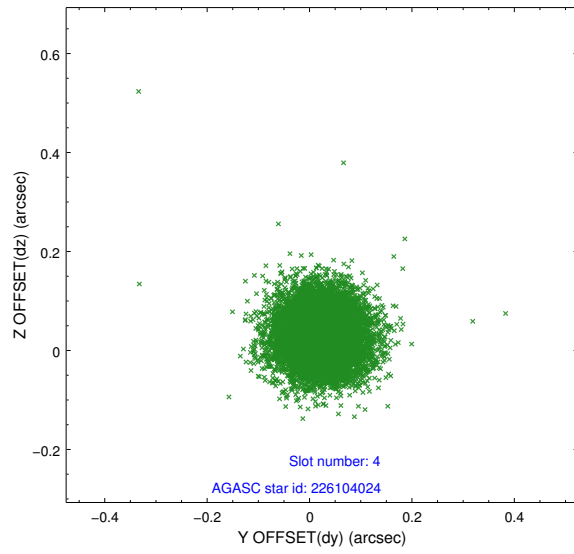
slot	status	id	mag	n_pts	med_dy	med_dz	dr1	dr2	ra	dec	mean_y	mean_z
0	FID	ACIS-S-2	7.11	4627	-0.059	-0.028	0.011	0.024	0.000000	0.000000	-759.70	-1732.04
1	FID	ACIS-S-4	7.21	4627	0.097	0.036	0.010	0.019	0.000000	0.000000	2153.60	176.36
2	FID	ACIS-S-5	7.23	4626	-0.070	0.002	0.008	0.016	0.000000	0.000000	-1812.33	170.15
3	GUIDE	226100024	6.58	9254	-0.246	0.204	0.041	0.066	359.579415	19.693550	-555.07	1887.35
4	GUIDE	226104024	9.06	9249	0.025	0.032	0.068	0.112	359.015645	19.855655	-834.54	-90.13
5	GUIDE	226108032	9.04	9254	0.206	-0.045	0.082	0.136	358.713729	19.207011	1629.68	-745.78
6	GUIDE	226115072	9.19	9245	0.110	-0.090	0.078	0.126	358.677872	19.048080	2213.89	-779.57
7	GUIDE	226111456	8.03	9253	-0.094	-0.101	0.054	0.088	358.266878	19.556240	615.36	-2435.27

2.4 Star Slots

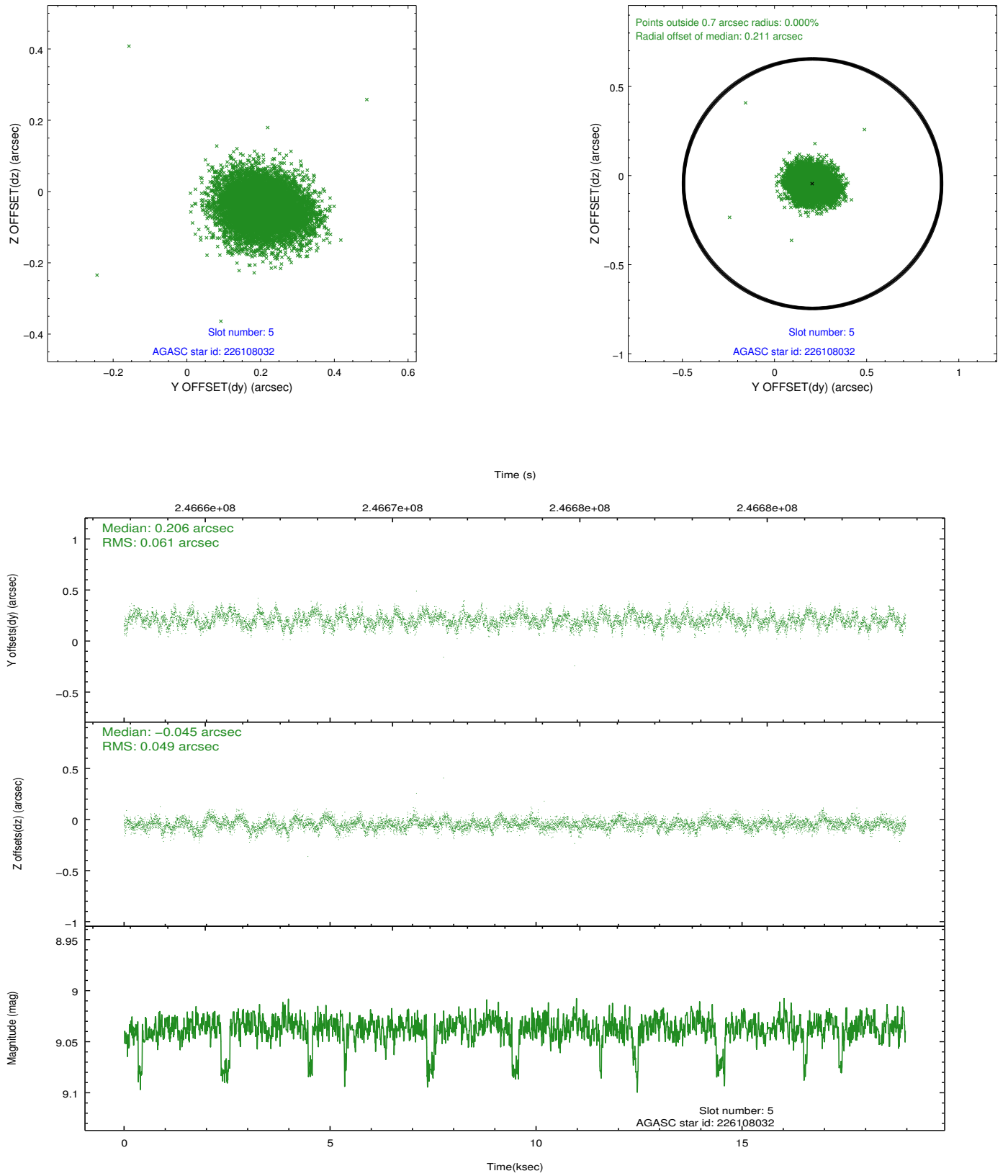
2.4.1 Slot 3



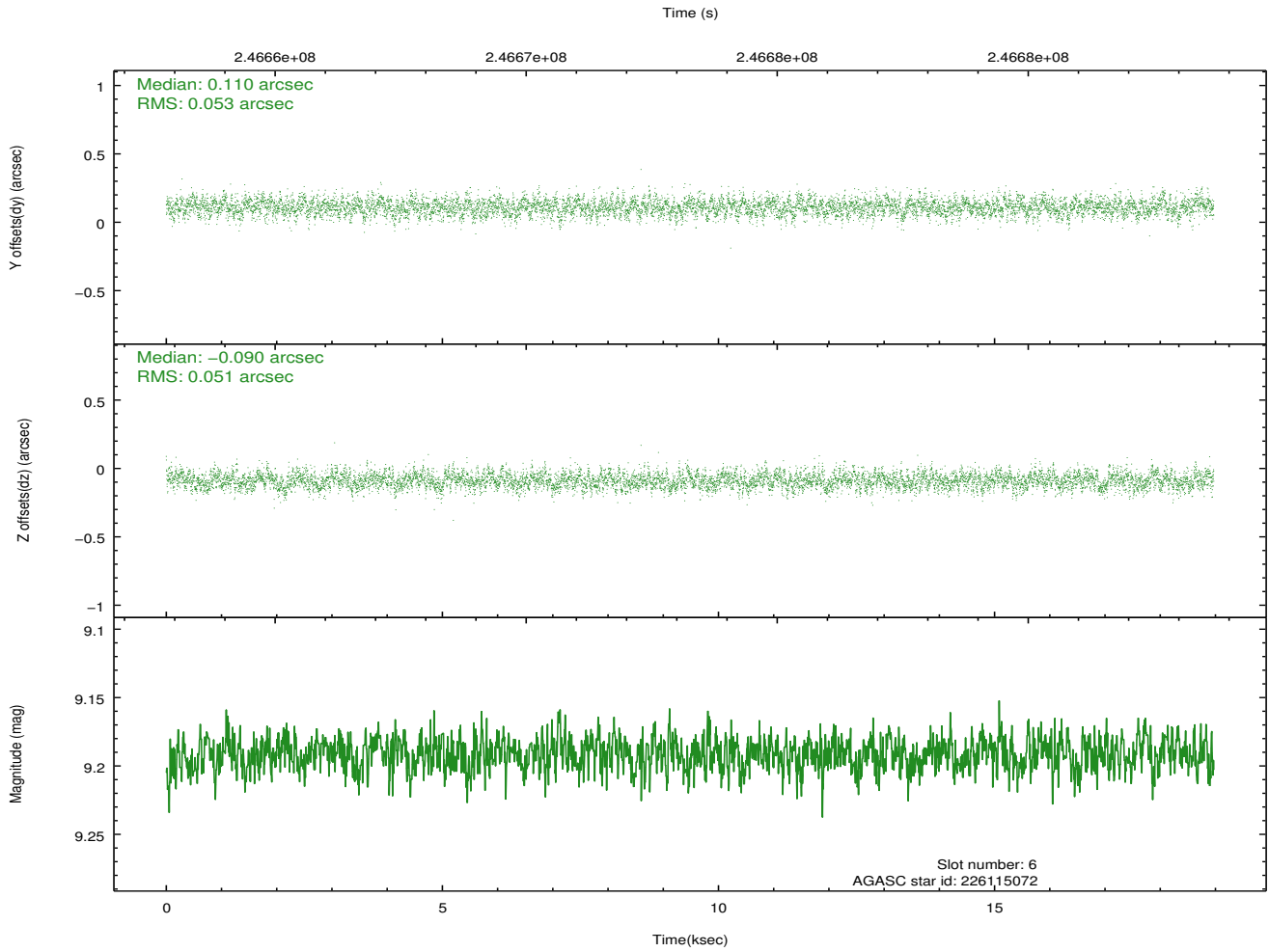
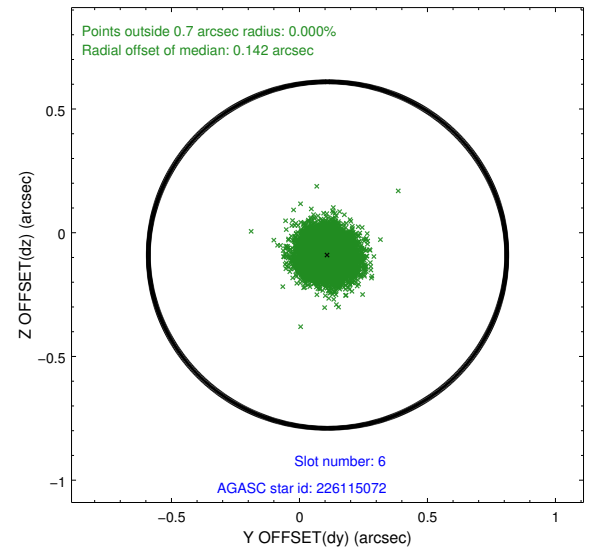
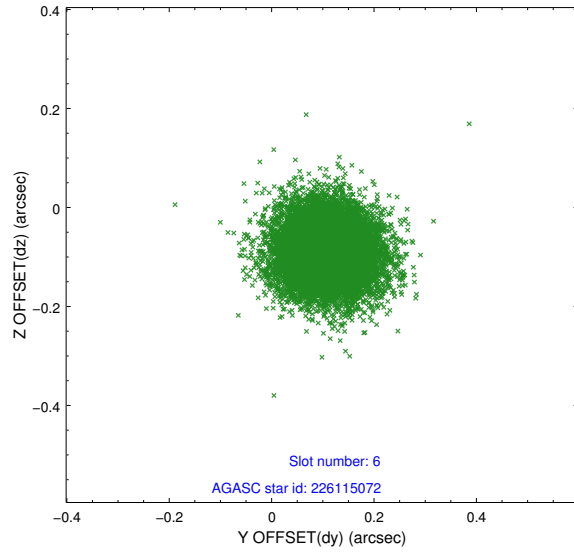
2.4.2 Slot 4



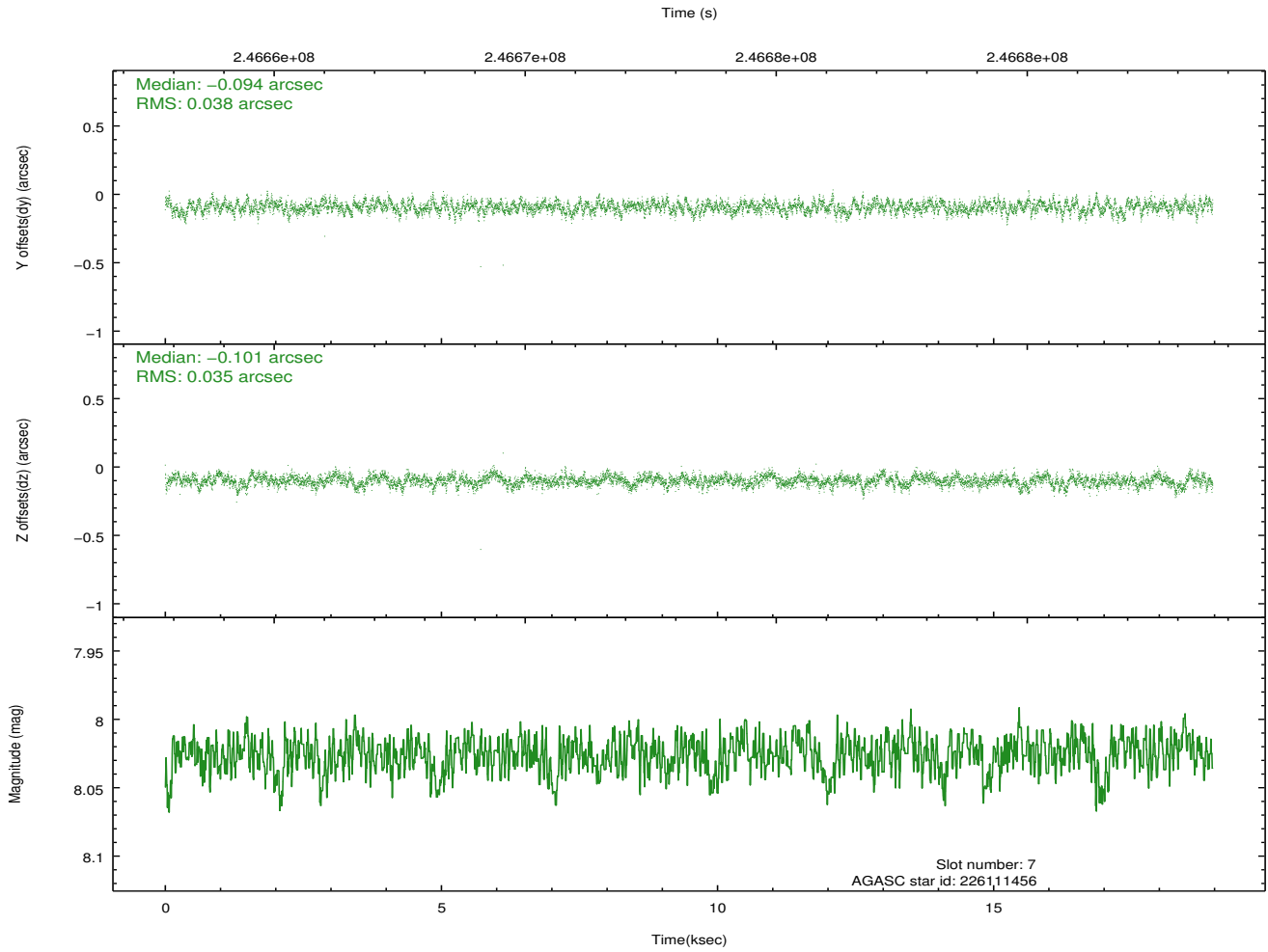
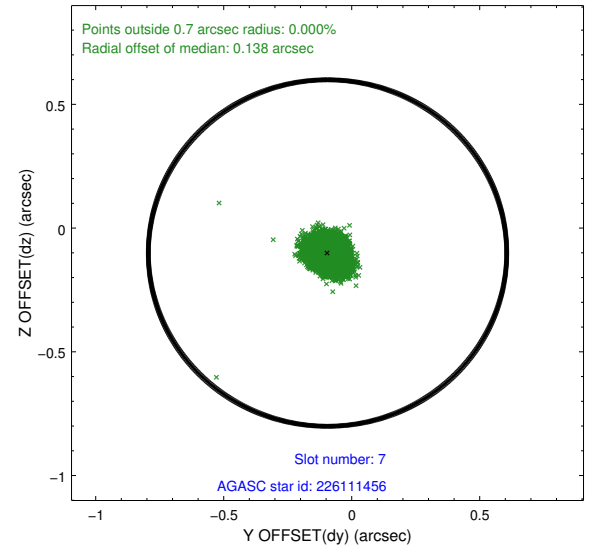
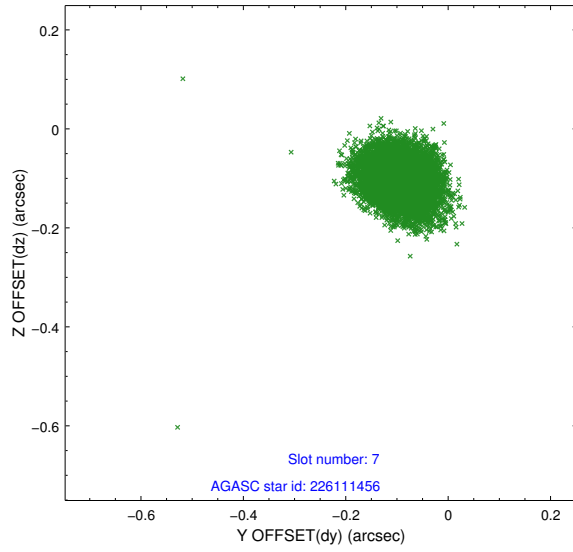
2.4.3 Slot 5



2.4.4 Slot 6

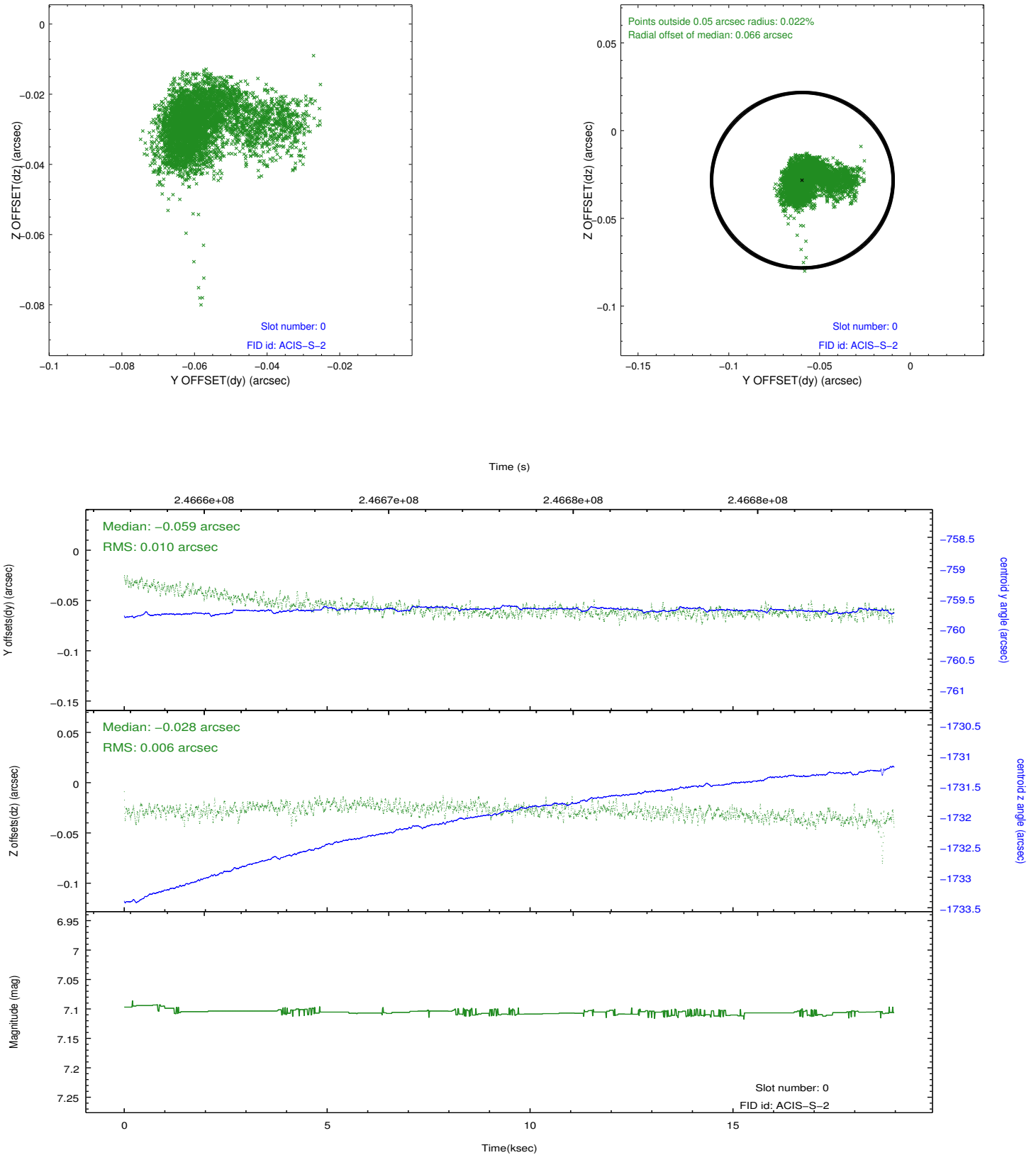


2.4.5 Slot 7

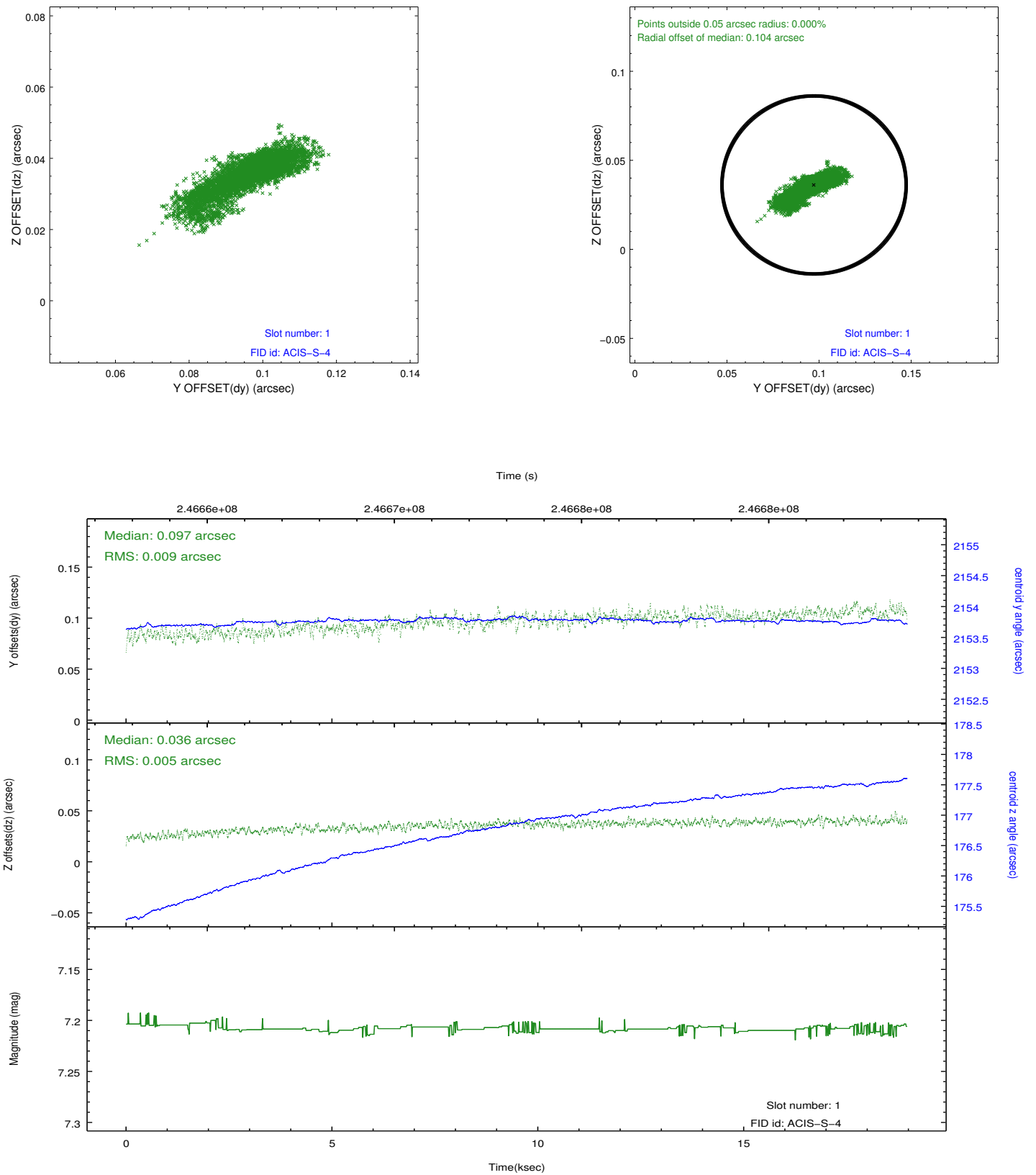


2.5 FID Slots

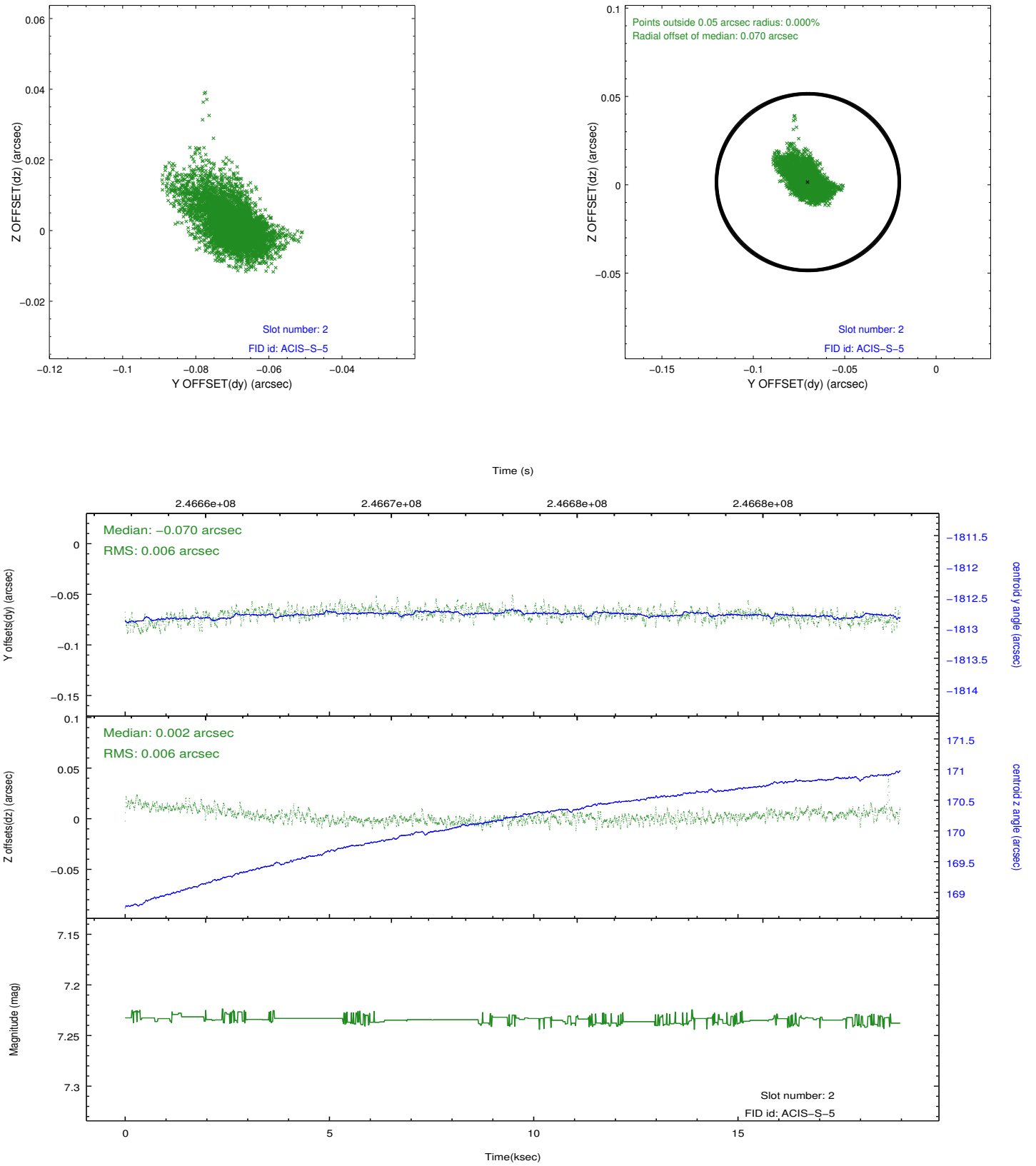
2.5.1 Slot 0



2.5.2 Slot 1



2.5.3 Slot 2



A Summary

A.1 Status

V&V Scientist	Jen Lauer
V&V Date (YYYY-MM-DD)	2013.01.28
V&V Edition	1
V&V Disposition and Status	OK
V&V Charge Time	18.96319

A.2 Comments