

V&V Reference Report

L2 ASCDS Version : 7.6.7.1

Observation 5426 - L2 Version 002
Chandra X-Ray Center

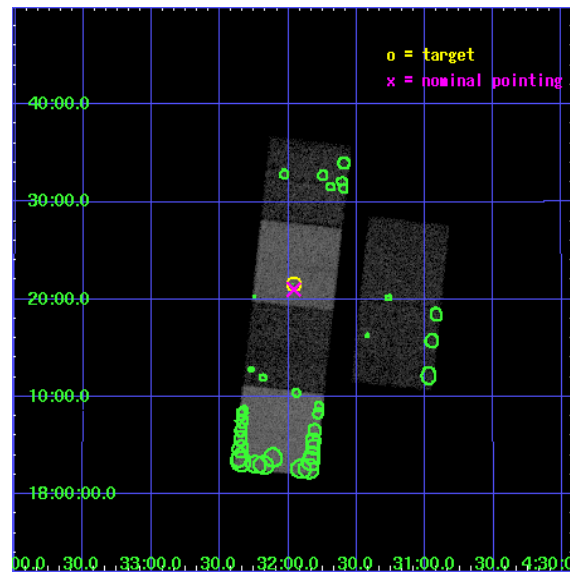
L2 Processing Date : Mar 17 2006

Contents

1	Front	2
2	OBI	3
2.1	OBI	3
2.1.1	Images	3
2.1.2	Bias	3
2.1.3	Parameters	4
2.1.4	Events	4
2.2	Compared Parameters	5
2.3	Aspect	6
2.4	Star Slots	9
2.4.1	Slot 3	9
2.4.2	Slot 4	10
2.4.3	Slot 5	11
2.4.4	Slot 6	12
2.4.5	Slot 7	13
2.5	FID Slots	14
2.5.1	Slot 0	14
2.5.2	Slot 1	15
2.5.3	Slot 2	16
3	Point Sources	17
A	Summary	18
A.1	Status	18
A.2	Comments	18

1 Front

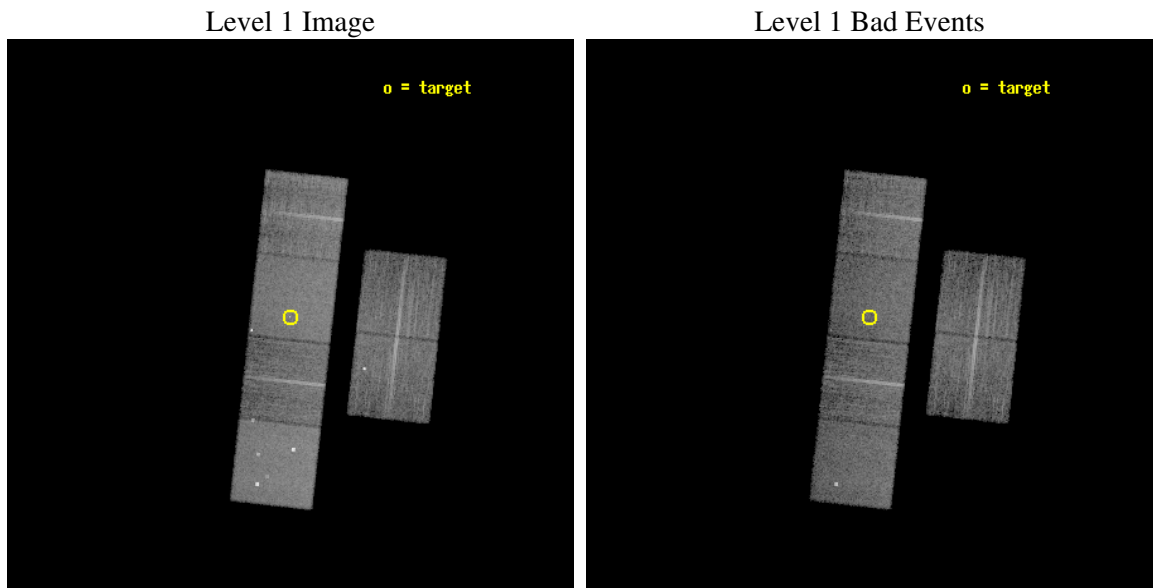
seq_num	200359
obs_id	5426
title	How Do T Tauri Stars Generate X-rays?
observer	Prof. David Weintraub
object	V710 Tau
dtcycle	0
cycle	P
ra_targ	67.990417
dec_targ	18.36025
ra_nom	67.989743202155
dec_nom	18.35062305717
roll_nom	276.29098524238
revision	2
ontime	10956.799959183
livetime	10818.058360707
ontime2	10956.799959183
ontime3	10956.799959183
ontime5	10956.799959183
ontime6	10956.799959183
ontime7	10956.799959183
ontime8	10956.799959183
l2events	129552



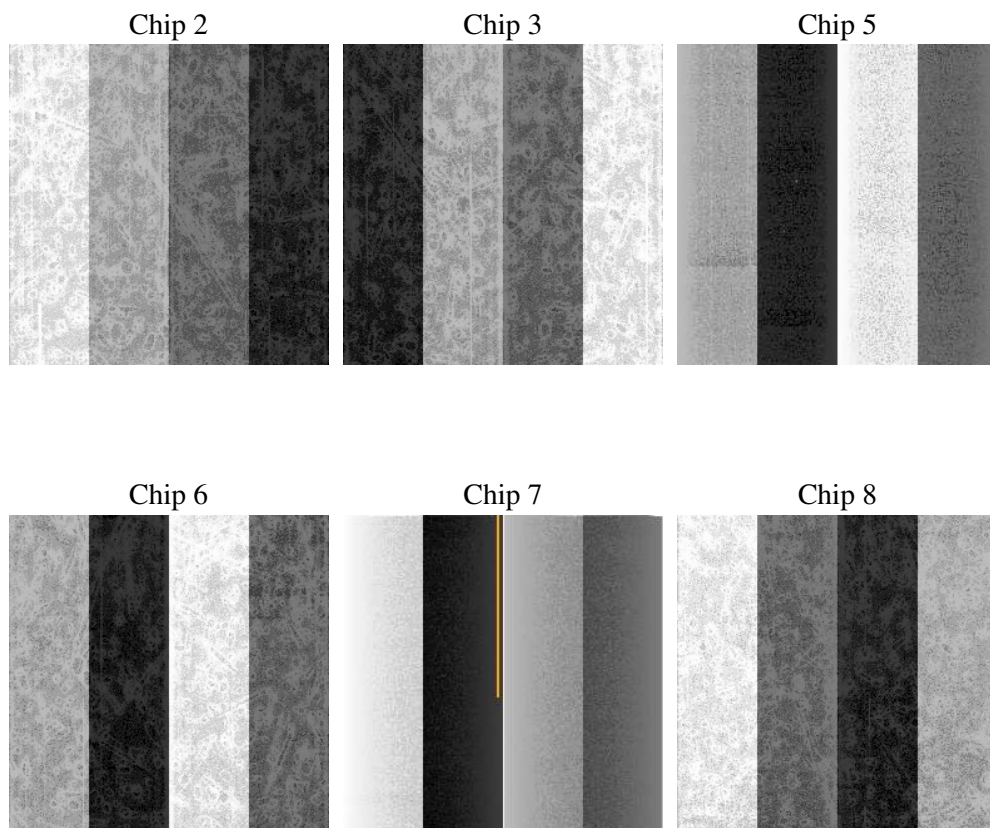
2 OBI

2.1 OBI

2.1.1 Images



2.1.2 Bias



2.1.3 Parameters

obi_num	0
ascdsver	7.6.7.1
caldbver	3.2.1
date	2006-03-18T00:24:17
revision	2

sched_exp_time	11000.000000
ontime	10961.063948214
ontime2	10961.063948214
ontime3	10961.063948214
ontime5	10961.063948214
ontime6	10961.063948214
ontime7	10961.063948214
ontime8	10961.063948214
l1events	591131

2.1.4 Events

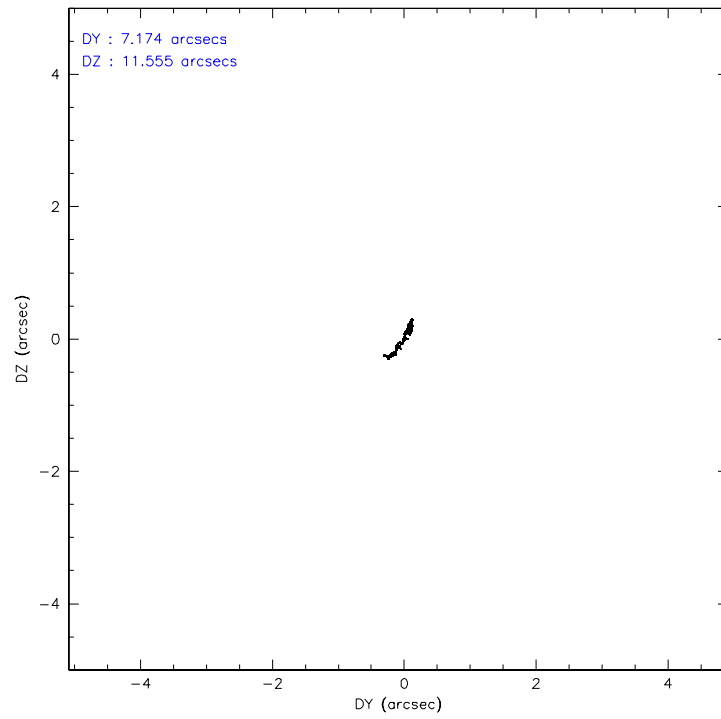
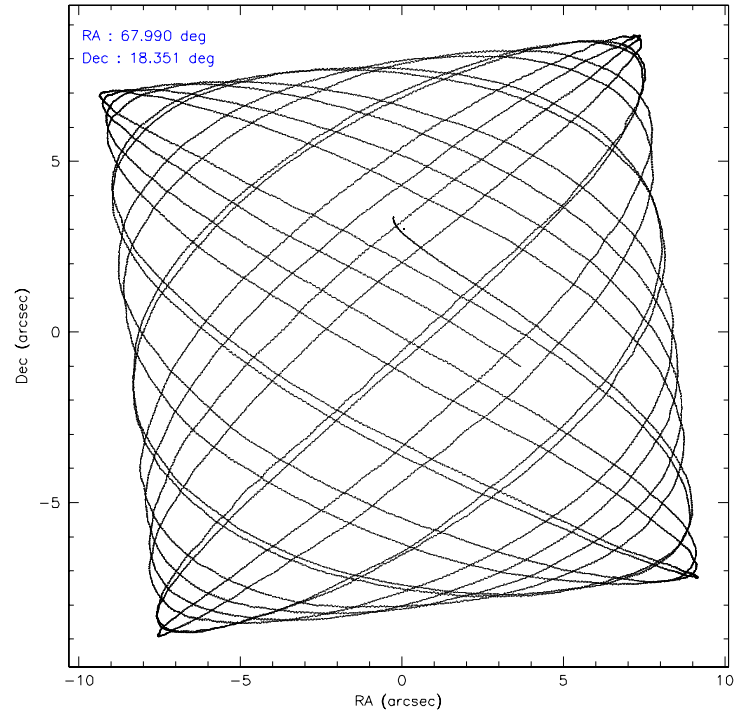
	ccd 2	ccd 3	ccd 5	ccd 6	ccd 7	ccd 8
level 1 events	84908	79698	128020	81823	112861	103821
rejected events	73437	70317	70178	72254	69357	80458
rejected %	86%	88%	54%	88%	61%	77%

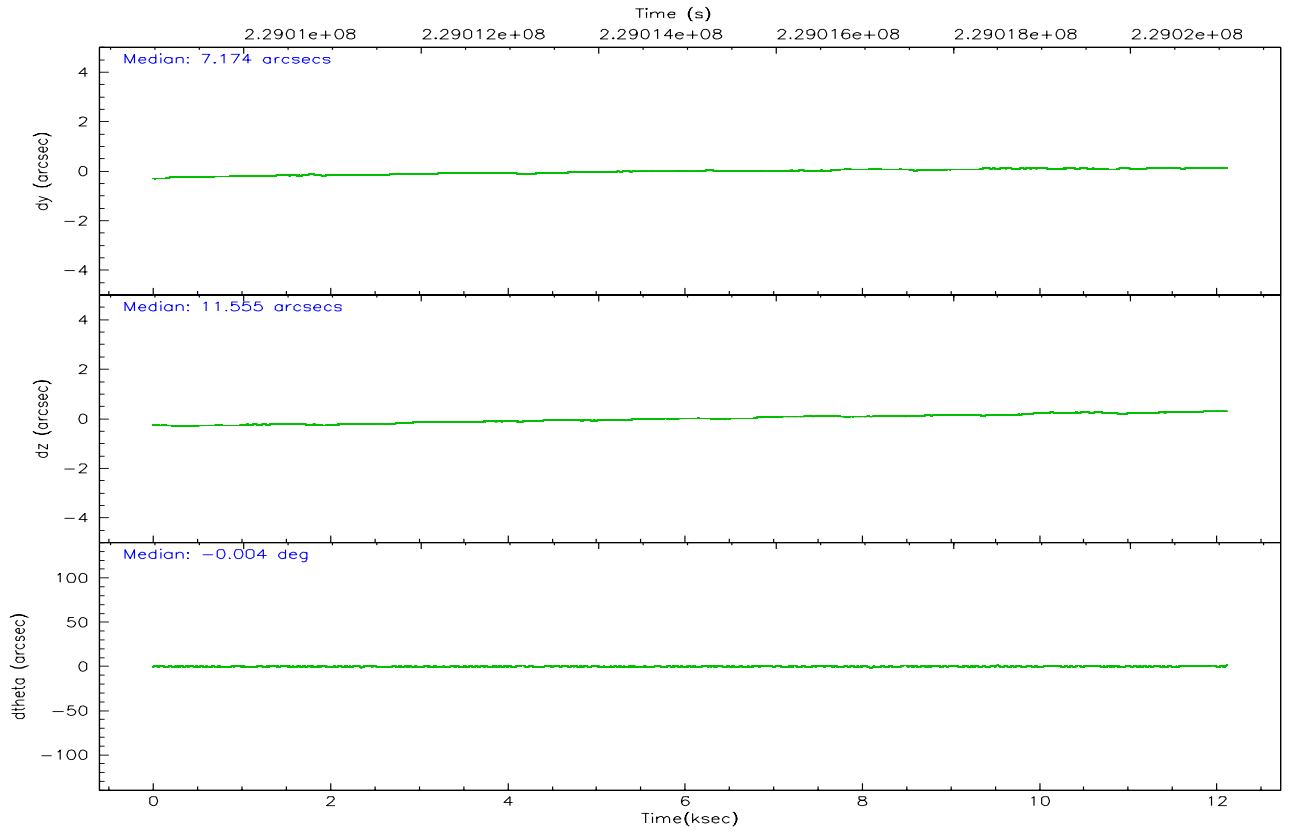
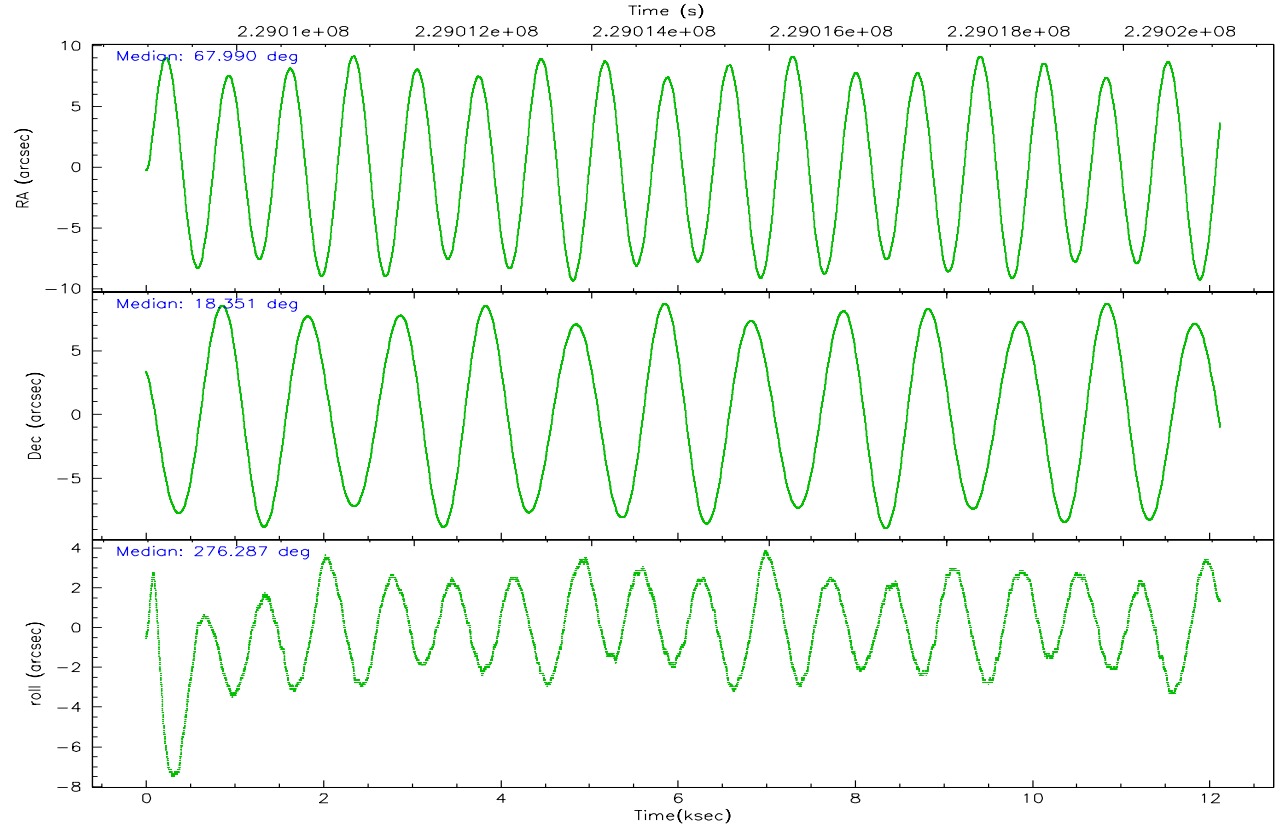
	ccd 2	ccd 3	ccd 5	ccd 6	ccd 7	ccd 8
grade 0 events	5673	3916	6369	3829	2644	7052
	6%	4%	4%	4%	2%	6%
grade 1 events	87	47	120	35	86	79
	0%	0%	0%	0%	0%	0%
grade 2 events	2117	1849	18010	1969	10924	5111
	2%	2%	14%	2%	9%	4%
grade 3 events	999	967	1202	911	2244	2637
	1%	1%	0%	1%	1%	2%
grade 4 events	994	952	1093	936	2242	2365
	1%	1%	0%	1%	1%	2%
grade 5 events	3265	3606	6248	3813	7332	4927
	3%	4%	4%	4%	6%	4%
grade 6 events	1690	1698	31190	1926	25463	6202
	1%	2%	24%	2%	22%	5%
grade 7 events	70083	66663	63788	68404	61926	75448
	82%	83%	49%	83%	54%	72%

2.2 Compared Parameters

Parameter	Planned	Actual	Parameter	Planned	Actual
Instrument	ACIS	ACIS	Obspar format version number	6	6
Detector	ACIS-235678	ACIS-235678	Obspar file type	PREDICTED	ACTUAL
Grating	NONE	NONE	Obspar update status	NONE	UPDATED
Data mode	FAINT	FAINT	On-chip summing requested	N	N
Observation mode	POINTING	POINTING	Subarray requested	NONE	NONE
Pointing RA	67.972445	67.98974320215468	Alternating exposures requested	N	N
Pointing Dec	18.372328	18.35062305717048	Primary exposure time	0.000000	3.2
Pointing Roll	276.139819	276.2909852423849			
SIM focus pos (mm)	-0.684267	-0.6828225247311905			
SIM defocus (mm)	0	0.001444936568705701			
SIM translation stage pos (mm)	-190.132523	-190.1400660498719			
SIM translation stage offset (mm)	0	0.00754346686406393			
Observation start time	229010094.184000	229008516.77775			
Observation start date	2005-04-04T13:53:50	2005-04-04T13:28:36			
Observation end time	229021094.184000	229021816.15335			
Observation end date	2005-04-04T16:57:10	2005-04-04T17:10:16			
Read mode	TIMED	TIMED			

2.3 Aspect



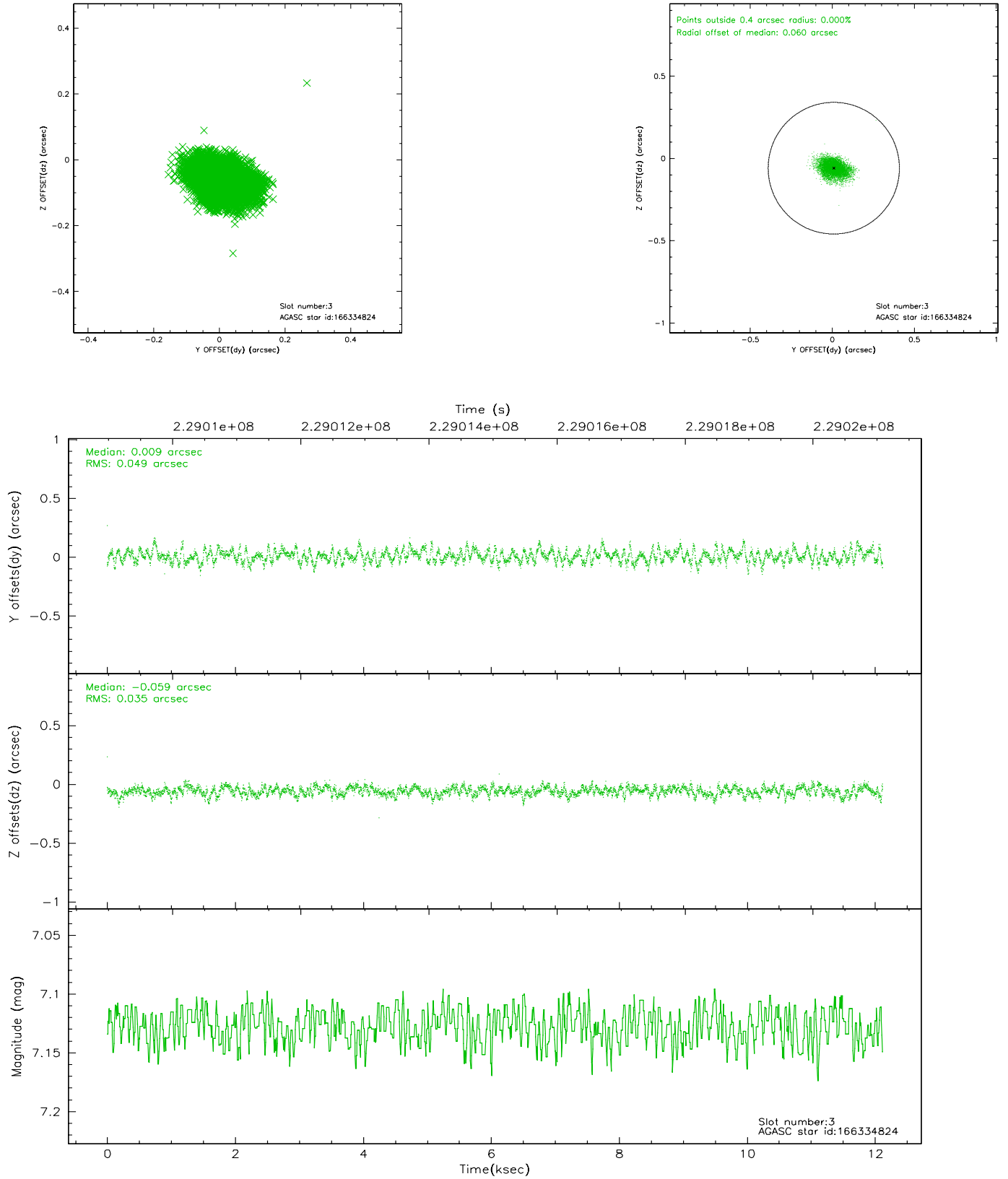


Slot Statistics

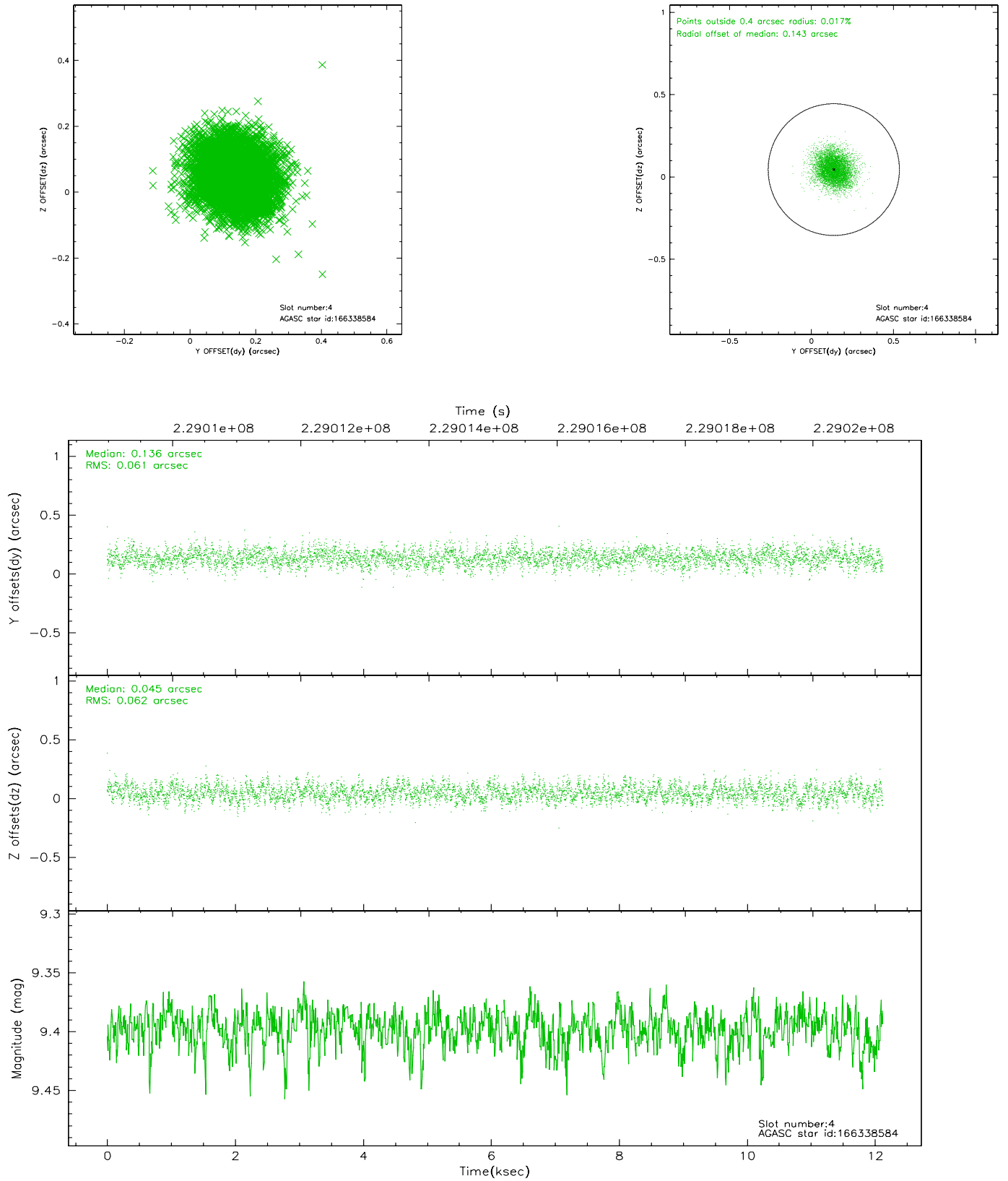
slot	status	id	mag	n_pts	med_dy	med_dz	dr1	dr2	ra	dec	mean_y	mean_z
0	FID	ACIS-S-2	7.10	2957	-0.020	-0.003	0.006	0.010	0.000000	0.000000	-759.91	-1732.85
1	FID	ACIS-S-4	7.20	2957	0.029	0.005	0.006	0.010	0.000000	0.000000	2153.21	175.23
2	FID	ACIS-S-6	7.34	2957	-0.036	0.005	0.007	0.011	0.000000	0.000000	402.56	813.08
3	GUIDE	166334824	7.13	5915	0.009	-0.059	0.064	0.105	67.376458	17.863163	1601.54	-2225.34
4	GUIDE	166338584	9.40	5910	0.136	0.045	0.092	0.150	67.904616	17.709782	2347.57	-485.77
5	GUIDE	166468240	9.07	5912	0.119	-0.056	0.069	0.115	68.167699	17.861525	1900.46	468.79
6	GUIDE	166995216	7.94	5913	-0.158	0.068	0.050	0.080	68.200288	18.935370	-1932.40	988.57
7	GUIDE	166996584	9.13	5905	-0.108	0.001	0.067	0.108	68.020035	18.861675	-1734.35	349.94

2.4 Star Slots

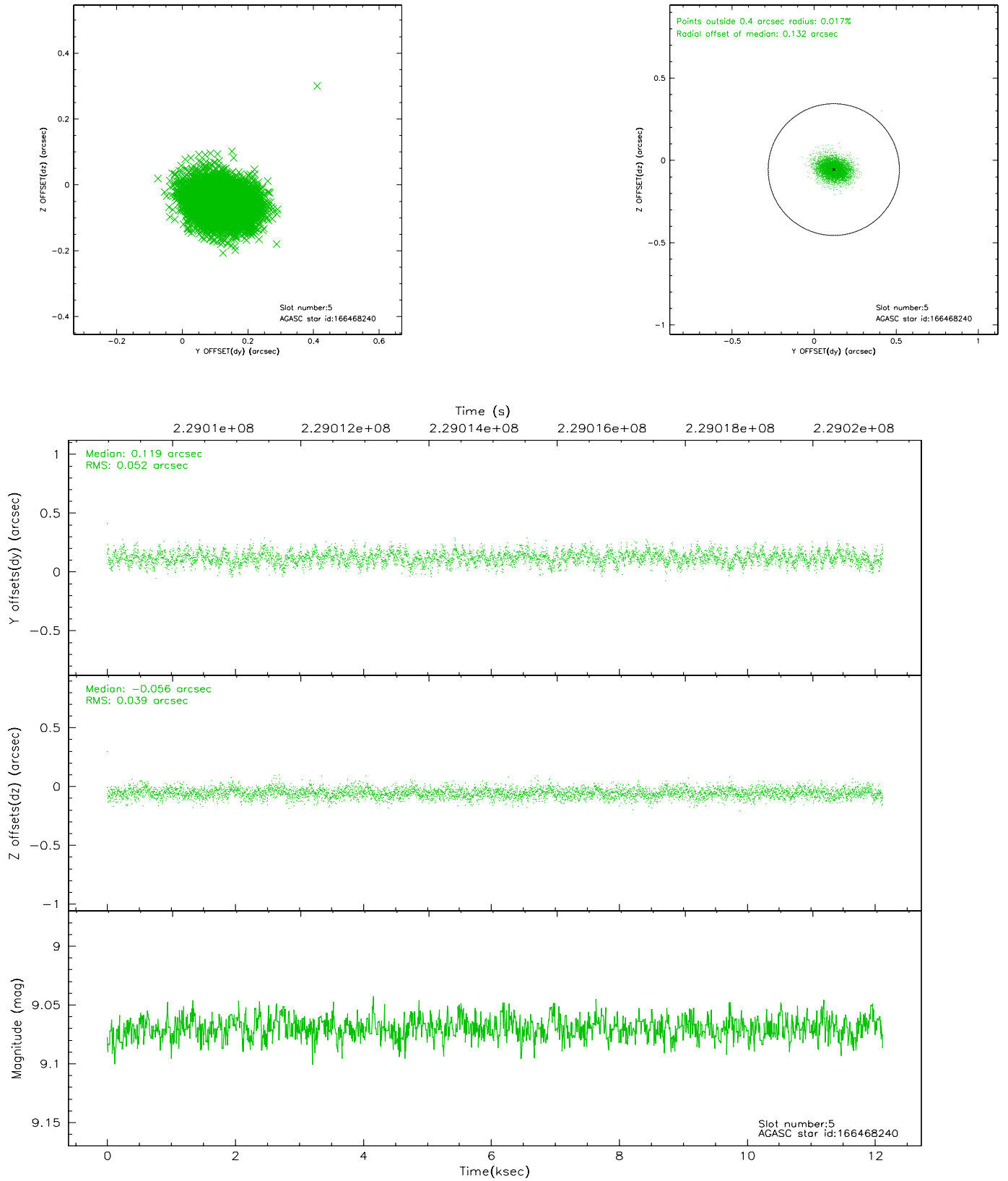
2.4.1 Slot 3



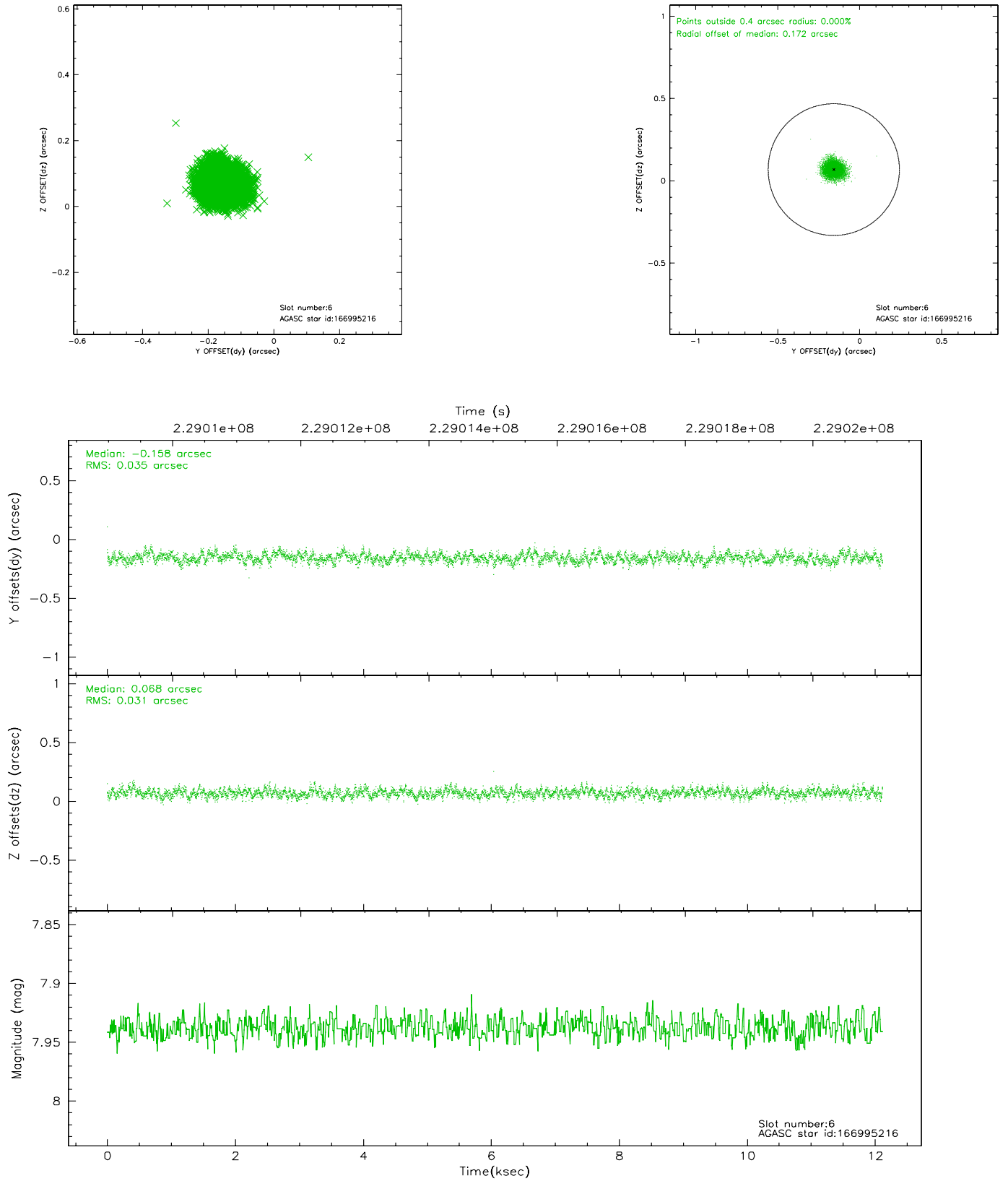
2.4.2 Slot 4



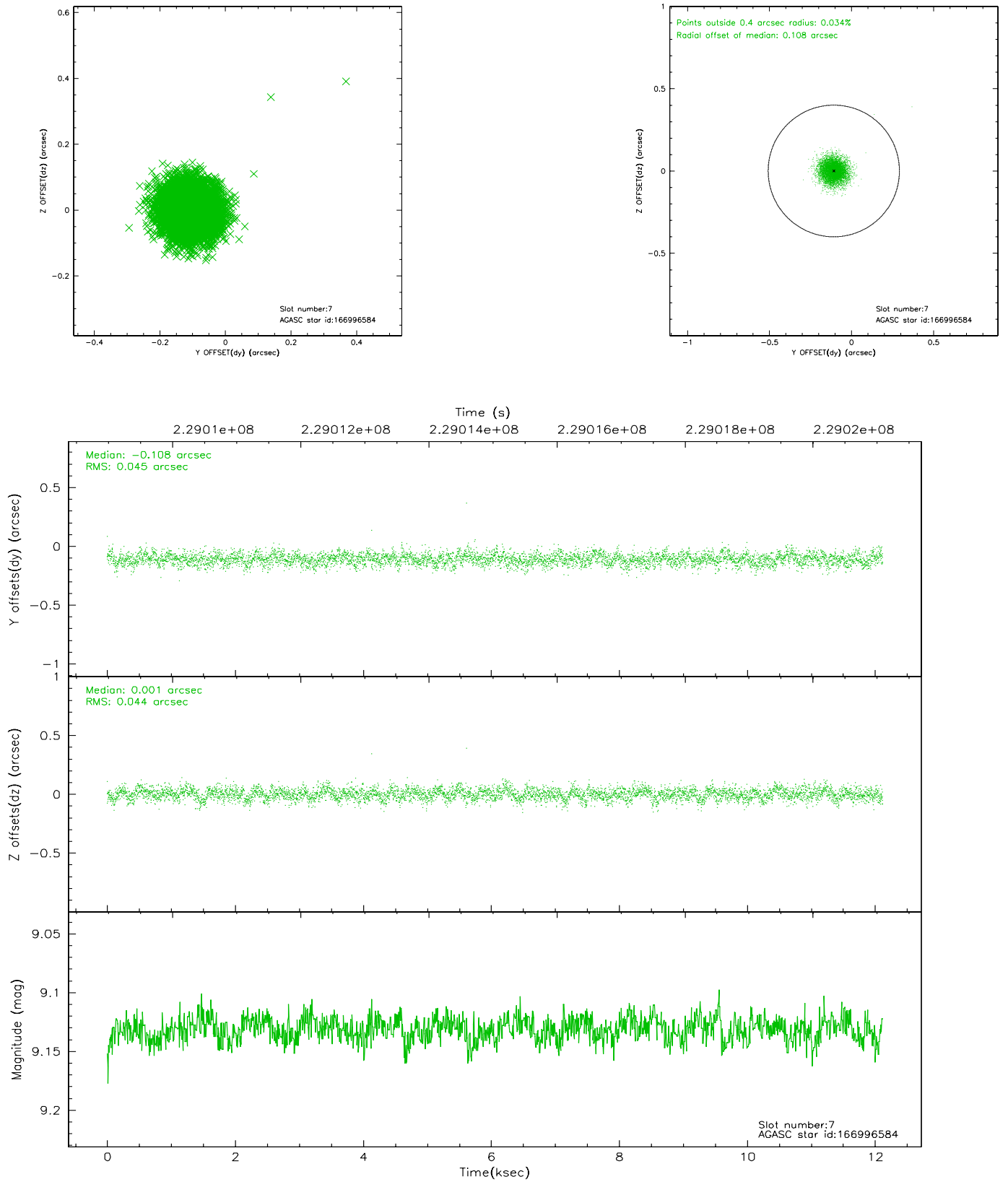
2.4.3 Slot 5



2.4.4 Slot 6

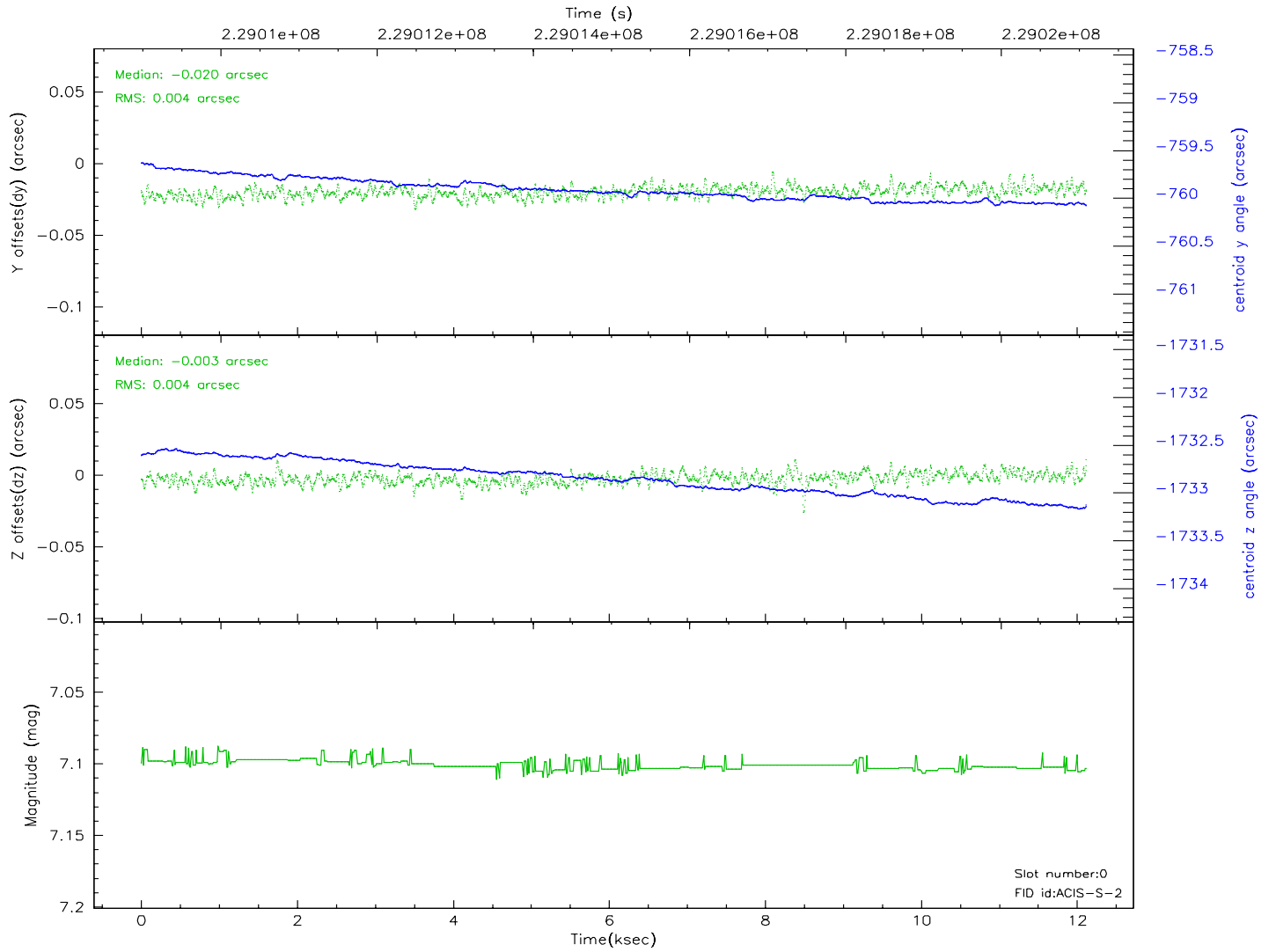
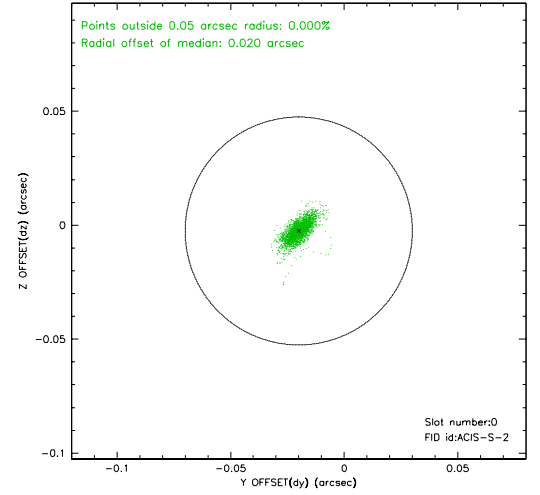
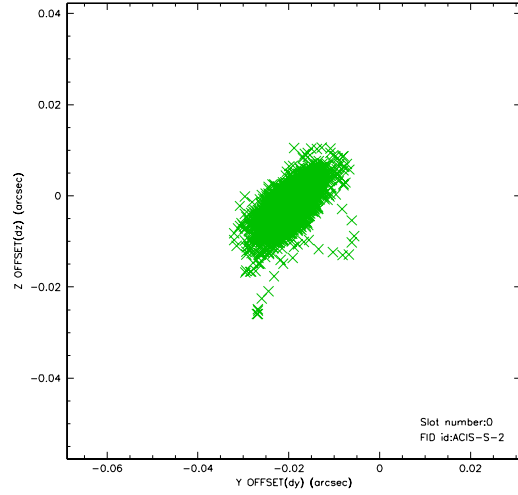


2.4.5 Slot 7

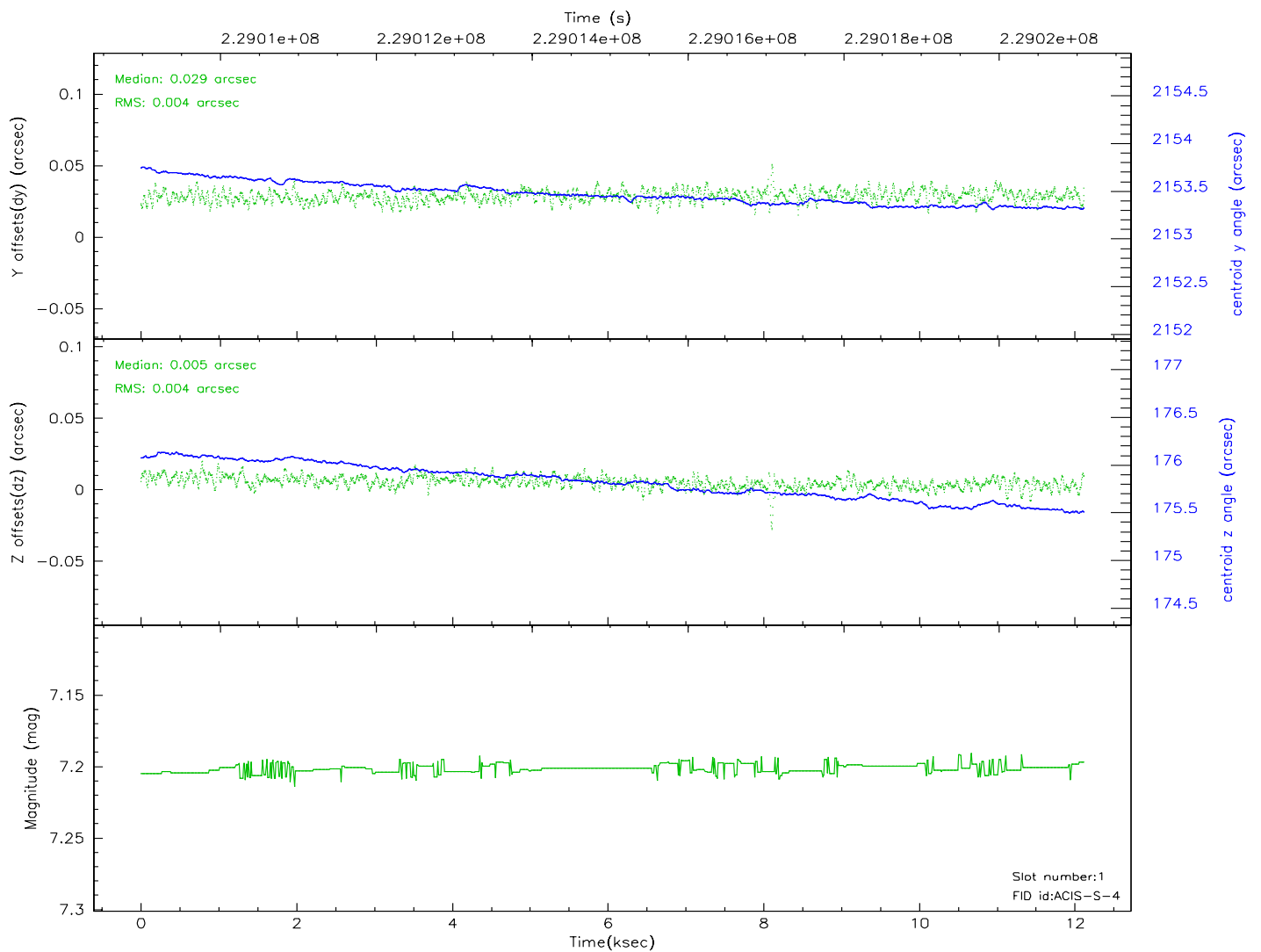
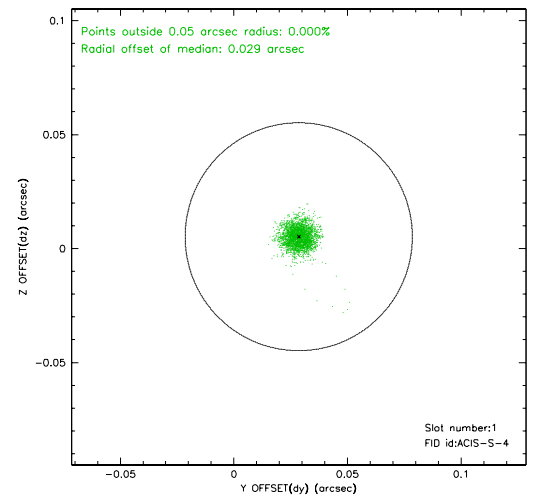
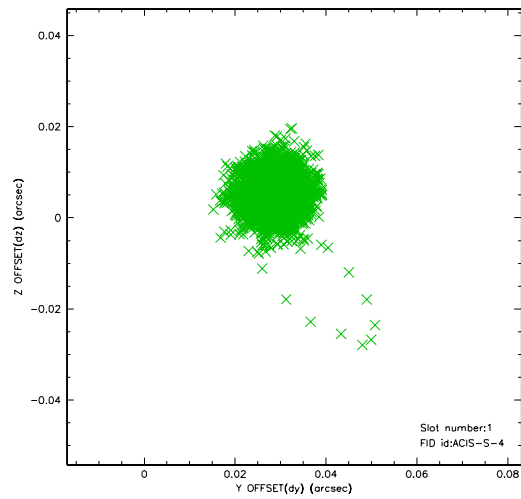


2.5 FID Slots

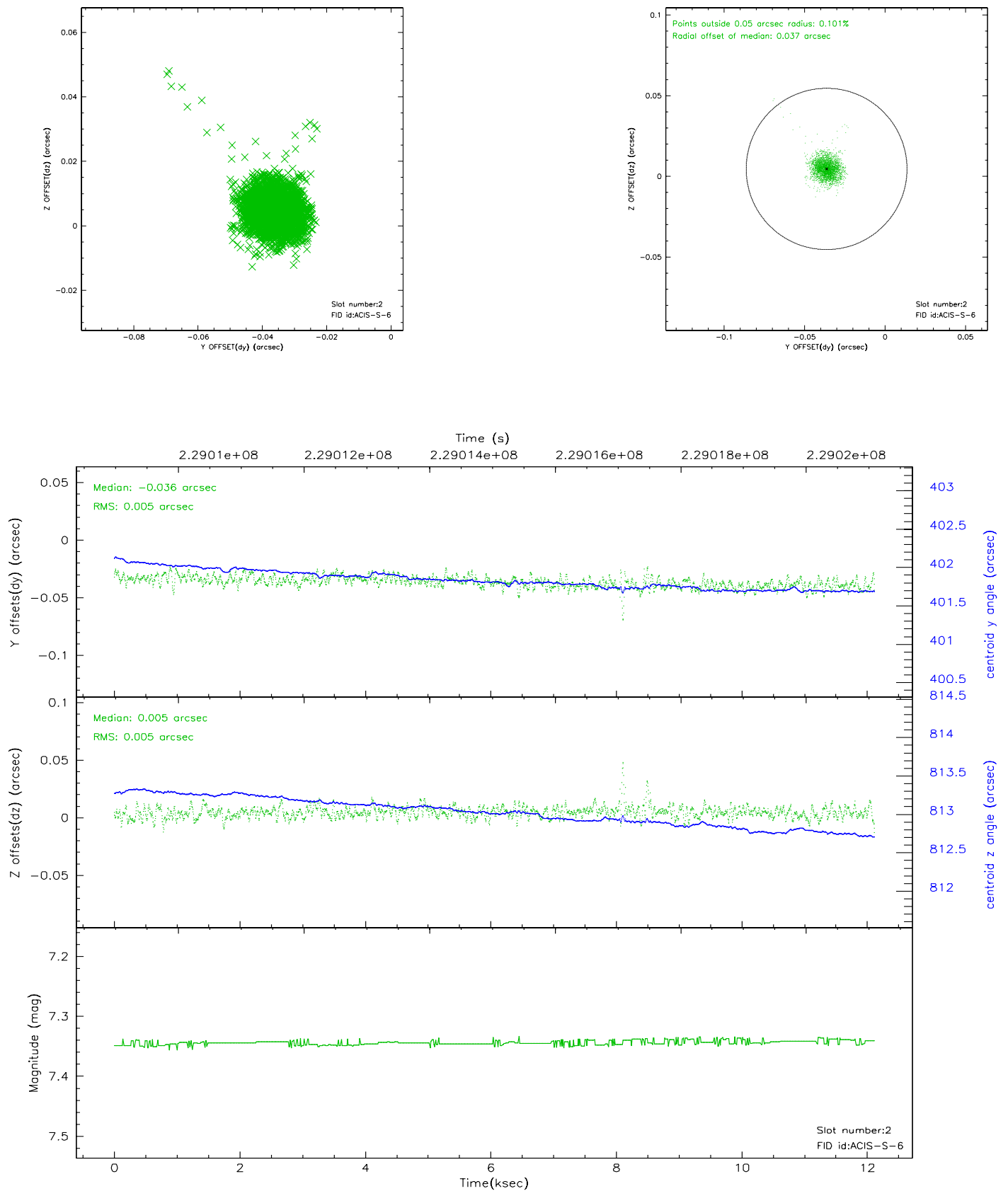
2.5.1 Slot 0



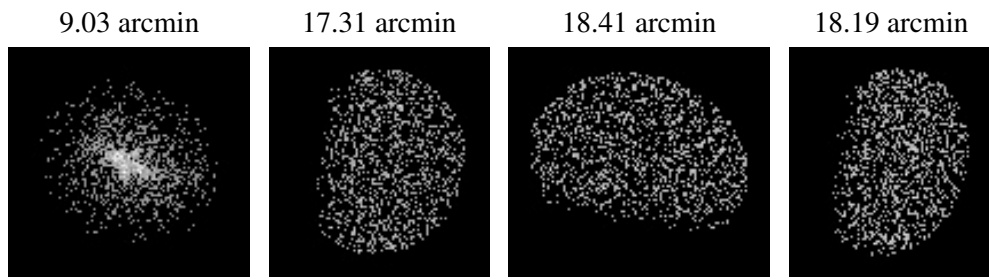
2.5.2 Slot 1



2.5.3 Slot 2



3 Point Sources



A Summary

A.1 Status

V&V Scientist	Jen Lauer
V&V Date (YYYY-MM-DD)	2006.03.20
V&V Edition	1
V&V Disposition and Status	OK
V&V Charge Time	10.95679

A.2 Comments

Monitor constraint met.