

V&V Reference Report

L2 ASCDS Version : 8.5.1.1

Observation 53876 - L2 Version 1
Chandra X-Ray Center

L2 Processing Date : Mar 11 2013

Contents

1	Front	2
2	OBI	3
2.1	OBI	3
2.1.1	Images	3
2.1.2	Bias	3
2.1.3	Parameters	4
2.1.4	Events	4
2.2	Compared Parameters	5
2.3	Star Slots	6
2.4	FID Slots	6
A	Summary	7
A.1	Status	7
A.2	Comments	7

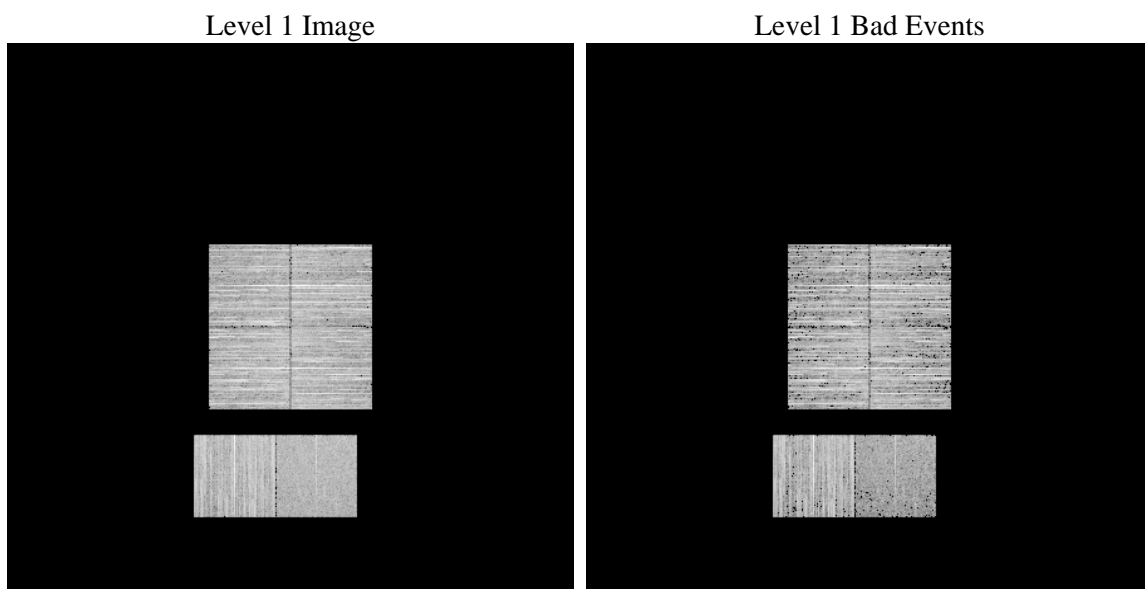
1 Front

seq_num	 	Sequence number
obs_id	53876	Observation id
title	ACIS-012367 diagnostics	Proposal title
observer	CHANDRA engineering request/realtime commanding	Principal investig
object	 	Source name
dtcycle	0	
cycle	P	events from which exps? Prim/Second/Both
ra_targ	0.0	Observer's specified target RA [deg]
dec_targ	0.0	Observer's specified target Dec [deg]
ra_nom	180.03390944559	Nominal RA [deg]
dec_nom	31.251635703025	Nominal Dec [deg]
roll_nom	161.08625123435	Nominal Roll [deg]
revision	1	Processing version of data
ontime	3288.8363130689	Sum of GTIs [s]
livetime	3247.1910873733	Livetime [s]
ontime0	3288.8773530722	Sum of GTIs [s]
ontime1	3288.9183831811	Sum of GTIs [s]
ontime2	3286.3590074778	Sum of GTIs [s]
ontime3	3288.7952730656	Sum of GTIs [s]
ontime6	3289.5999878049	Sum of GTIs [s]
ontime7	3288.8363130689	Sum of GTIs [s]
l2events	89569	Number of level 2 events

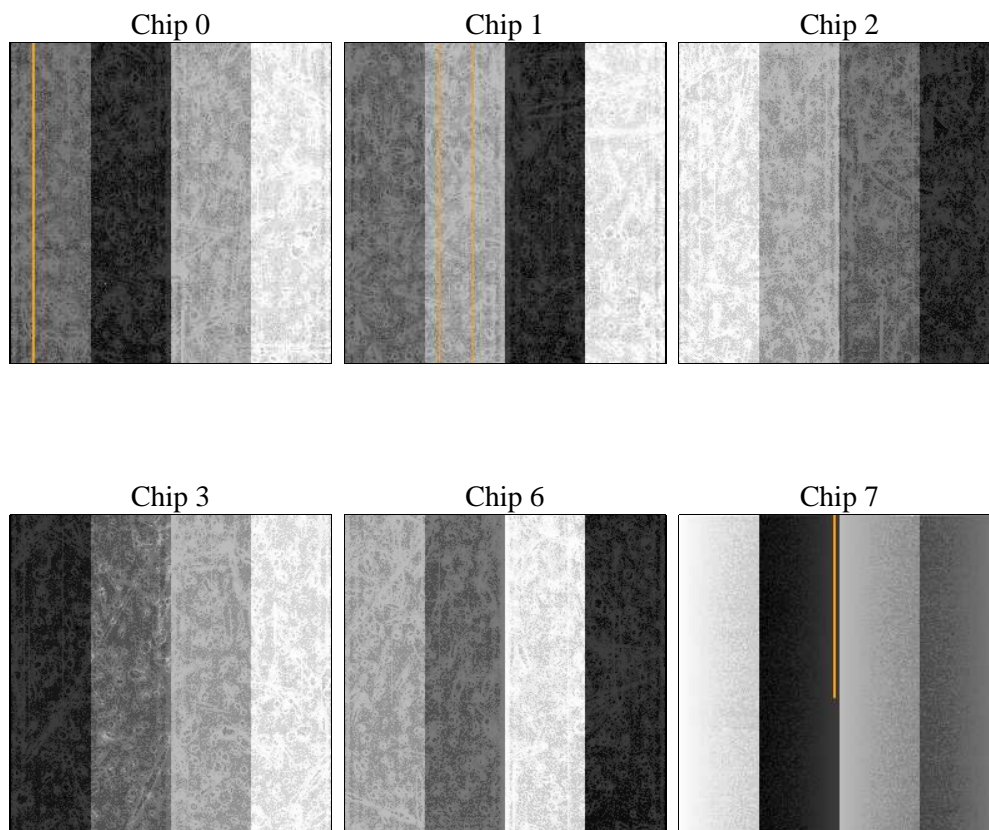
2 OBI

2.1 OBI

2.1.1 Images



2.1.2 Bias



2.1.3 Parameters

obi_num	1	Obi number	sched_exp_time	0.0	[s] Scheduled observation exposure time
ascdsver	8.5.1.1	Processing system revision	ontime	3288.8363130689	Sum of GTIs [s]
caldbver	4.5.6	 	ontime0	3288.8773530722	Sum of GTIs [s]
date	2013-03-11T17:14:17	Date and time of file creation	ontime1	3288.9183831811	Sum of GTIs [s]
revision	1	Processing version of data	ontime2	3286.3590074778	Sum of GTIs [s]
			ontime3	3288.7952730656	Sum of GTIs [s]
			ontime6	3289.5999878049	Sum of GTIs [s]
			ontime7	3288.8363130689	Sum of GTIs [s]
			l1events	396274	Number of level 1 events

2.1.4 Events

	ccd 0	ccd 1	ccd 2	ccd 3	ccd 6	ccd 7
level 1 events	62957	67072	71918	68672	70632	55023
rejected events	49218	53361	58136	55148	56177	29308
rejected %	78%	79%	80%	80%	79%	53%

	ccd 0	ccd 1	ccd 2	ccd 3	ccd 6	ccd 7
grade 0 events	6952	6822	7197	7079	7126	3802
	11%	10%	10%	10%	10%	6%
grade 1 events	39	30	49	47	35	31
	0%	0%	0%	0%	0%	0%
grade 2 events	2795	2786	2671	2541	2880	6209
	4%	4%	3%	3%	4%	11%
grade 3 events	931	880	952	976	991	2162
	1%	1%	1%	1%	1%	3%
grade 4 events	905	964	938	931	990	2189
	1%	1%	1%	1%	1%	3%
grade 5 events	1198	1245	1206	1356	1393	3426
	1%	1%	1%	1%	1%	6%
grade 6 events	2156	2259	2036	1997	2485	11353
	3%	3%	2%	2%	3%	20%
grade 7 events	47981	52086	56869	53745	54732	25851
	76%	77%	79%	78%	77%	46%

2.2 Compared Parameters

Parameter	Planned	Actual	Parameter	Planned	Actual
Instrument	ACIS	ACIS	Obspar format version number	7	7
Detector	ACIS-012367	ACIS-012367	Obspar file type	PREDICTED	ACTUAL
Grating	NONE	NONE	Obspar update status	NONE	UPDATED
Data mode	FAINT	FAINT	Number of optional ACIS chips dropped	0	0
Observation mode	SECONDARY	SECONDARY	On-chip summing requested	N	N
[deg] Pointing RA	0	180.0339094455884	Subarray requested	NONE	NONE
[deg] Pointing Dec	0	31.25163570302487	Alternating exposures requested	N	N
[deg] Pointing Roll	0.0	161.0862512343488	[s] Primary exposure time	3.2	3.2
[mm] SIM focus pos	-1.429586	-1.428180813131781			
[mm] SIM defocus	0.1037507710433287	0.1051558262725154			
[mm] SIM translation stage pos	250.455976	250.466033080201			
[mm] SIM translation stage offset	0	-0.01005468664627074			
[s] Observation start time (MET)	479335298.900052	479335297.87505			
Observation start date	2013-03-10T20:41:39	2013-03-10T20:41:37			
[s] Observation end time (MET)	479343882.250517	479343881.22552			
Observation end date	2013-03-10T23:04:42	2013-03-10T23:04:41			
Read mode	TIMED	TIMED			

2.3 Star Slots

2.4 FID Slots

A Summary

A.1 Status

V&V Scientist	Beth Sundheim
V&V Date (YYYY-MM-DD)	2013.03.11
V&V Edition	1
V&V Disposition and Status	OK
V&V Charge Time	3.2888363130689

A.2 Comments