

# V&V Reference Report

## L2 ASCDS Version : 8.5.1.1

Observation 5366 - L2 Version 3  
Chandra X-Ray Center

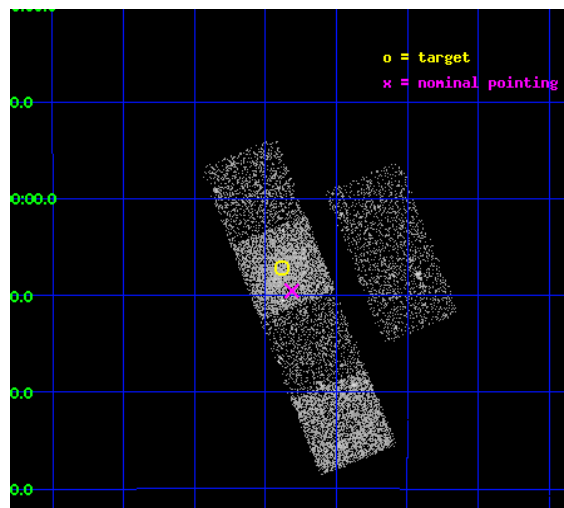
L2 Processing Date : Dec 25 2012

## Contents

<b>1</b>	<b>Front</b>	<b>2</b>
<b>2</b>	<b>OBI</b>	<b>3</b>
2.1	OBI . . . . .	3
2.1.1	Images . . . . .	3
2.1.2	Bias . . . . .	3
2.1.3	Parameters . . . . .	4
2.1.4	Events . . . . .	4
2.2	Compared Parameters . . . . .	5
2.3	Aspect . . . . .	6
2.4	Star Slots . . . . .	9
2.4.1	Slot 3 . . . . .	9
2.4.2	Slot 4 . . . . .	10
2.4.3	Slot 5 . . . . .	11
2.4.4	Slot 6 . . . . .	12
2.4.5	Slot 7 . . . . .	13
2.5	FID Slots . . . . .	14
2.5.1	Slot 0 . . . . .	14
2.5.2	Slot 1 . . . . .	15
2.5.3	Slot 2 . . . . .	16
<b>A</b>	<b>Summary</b>	<b>17</b>
A.1	Status . . . . .	17
A.2	Comments . . . . .	17

# 1 Front

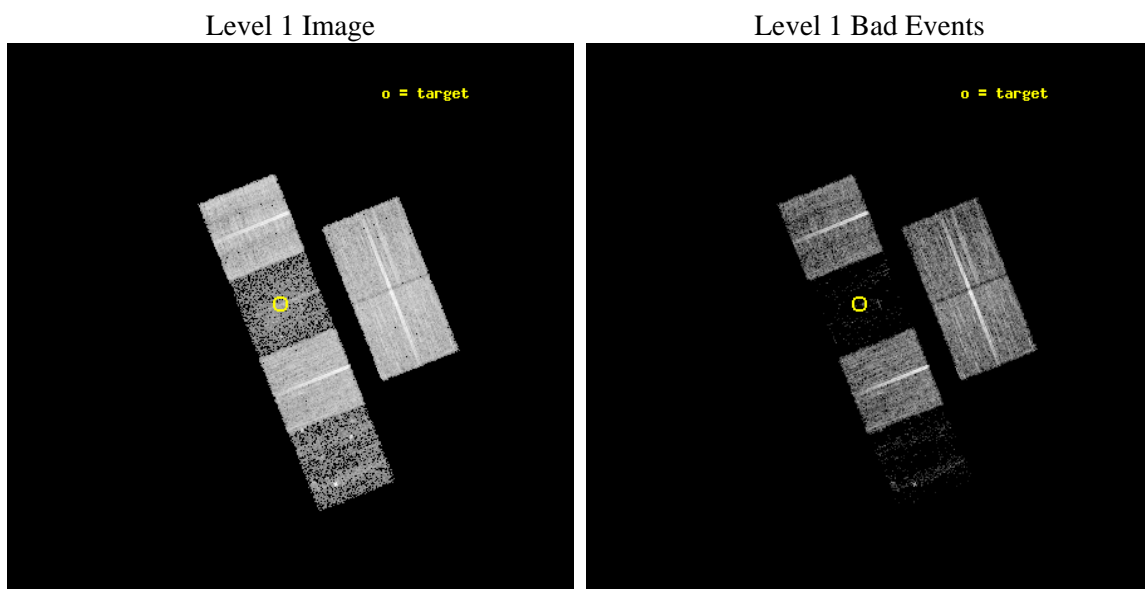
seq_num	100054	Sequence number
obs_id	5366	Observation id
title	Comet 9P/Tempel 1 During the Deep Impact Encounter	Proposal title
observer	Dr. Carey Lisse	Principal investigator
object	9P/Tempel 1	Source name
dtcycle	0	&#160
cycle	P	events from which exps? Prim/Second/Both
ra_targ	202.846045	Observer's specified target RA [deg]
dec_targ	-8.11978	Observer's specified target Dec [deg]
ra_nom	202.82843149544	Nominal RA [deg]
dec_nom	-8.1590138607185	Nominal Dec [deg]
roll_nom	248.30010988496	Nominal Roll [deg]
revision	3	Processing version of data
ontime	9961.0030465722	Sum of GTIs [s]
livetime	9834.8708282006	Livetime [s]
ontime2	9961.0440865755	Sum of GTIs [s]
ontime3	9957.6389662027	Sum of GTIs [s]
ontime5	9960.9620065689	Sum of GTIs [s]
ontime6	9960.9209665656	Sum of GTIs [s]
ontime7	9961.0030465722	Sum of GTIs [s]
ontime8	9960.8388865888	Sum of GTIs [s]
l2events	15318	Number of level 2 events



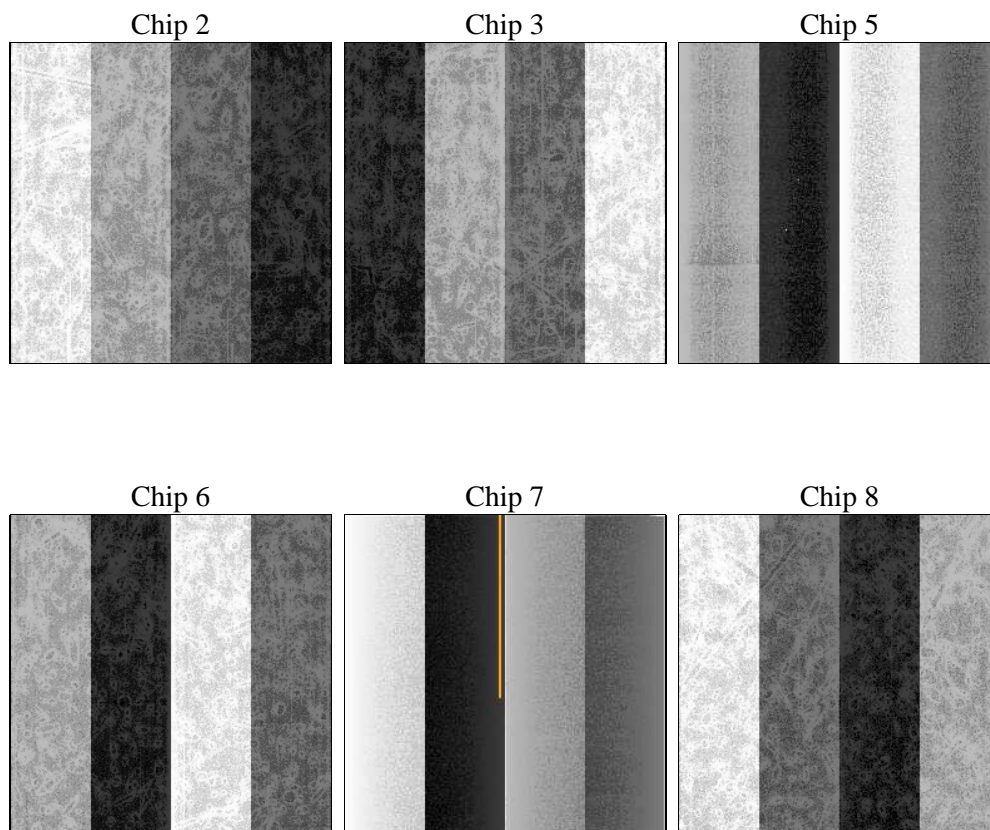
## 2 OBI

### 2.1 OBI

#### 2.1.1 Images



#### 2.1.2 Bias



### 2.1.3 Parameters

obi_num	0	Obi number	sched_exp_time	10000.000000	[s] Scheduled observation exposure time
ascdsver	8.5.1.1	Processing system revision	ontime	9961.0030465722	Sum of GTIs [s]
caldsver	4.5.5	&#160	ontime2	9961.0440865755	Sum of GTIs [s]
date	2012-12-25T17:30:01	Date and time of file creation	ontime3	9957.6389662027	Sum of GTIs [s]
revision	3	Processing version of data	ontime5	9960.9620065689	Sum of GTIs [s]
			ontime6	9960.9209665656	Sum of GTIs [s]
			ontime7	9961.0030465722	Sum of GTIs [s]
			ontime8	9960.8388865888	Sum of GTIs [s]
			l1events	205118	Number of level 1 events

### 2.1.4 Events

	ccd 2	ccd 3	ccd 5	ccd 6	ccd 7	ccd 8
level 1 events	51719	42943	8419	43803	7486	50748
rejected events	49552	41553	2564	41820	1377	38702
rejected %	95%	96%	30%	95%	18%	76%

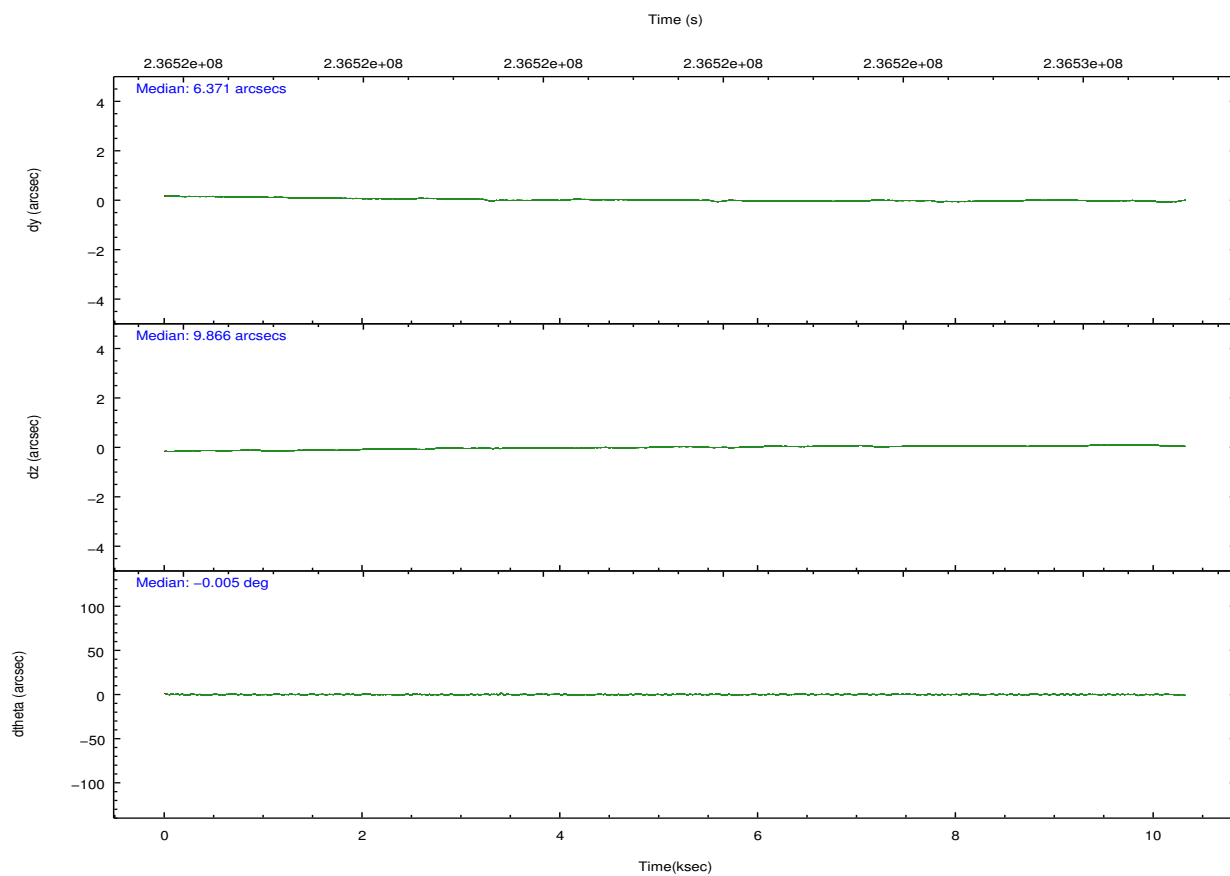
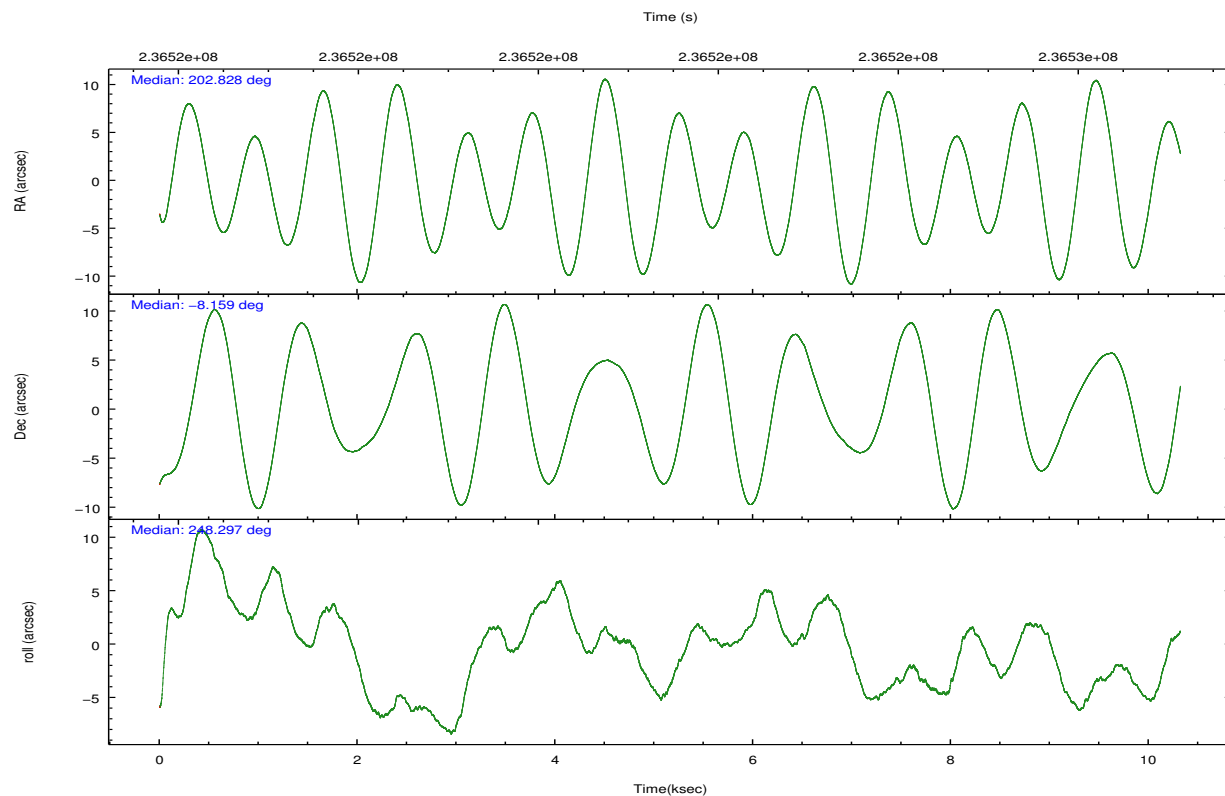
	ccd 2	ccd 3	ccd 5	ccd 6	ccd 7	ccd 8
grade 0 events	946	649	2022	921	2073	3442
	1%	1%	24%	2%	27%	6%
grade 1 events	22	15	203	11	25	29
	0%	0%	2%	0%	0%	0%
grade 2 events	497	183	1866	371	1830	2833
	0%	0%	22%	0%	24%	5%
grade 3 events	251	241	733	282	870	1405
	0%	0%	8%	0%	11%	2%
grade 4 events	304	214	673	308	807	1306
	0%	0%	7%	0%	10%	2%
grade 5 events	60	37	428	41	153	258
	0%	0%	5%	0%	2%	0%
grade 6 events	197	129	624	127	643	3240
	0%	0%	7%	0%	8%	6%
grade 7 events	49442	41475	1870	41742	1085	38235
	95%	96%	22%	95%	14%	75%



## 2.2 Compared Parameters

Parameter	Planned	Actual	Parameter	Planned	Actual
Instrument	ACIS	ACIS	Obspar format version number	7	7
Detector	ACIS-235678	ACIS-235678	Obspar file type	PREDICTED	ACTUAL
Grating	NONE	NONE	Obspar update status	NONE	UPDATED
Data mode	VFAINT	VFAINT	Number of optional ACIS chips dropped	0	0
Observation mode	POINTING	POINTING	On-chip summing requested	N	N
[deg] Pointing RA	202.824060	202.828431495444	Subarray requested	NONE	NONE
[deg] Pointing Dec	-8.132058	-8.159013860718467	Alternating exposures requested	N	N
[deg] Pointing Roll	248.142878	248.3001098849583	[s] Primary exposure time	0.000000	3.2
[mm] SIM focus pos	-0.684267	-0.6828225247311905			
[mm] SIM defocus	0	0.001444936568705701			
[mm] SIM translation stage pos	-190.132523	-190.1400660498719			
[mm] SIM translation stage offset	0	0.00754346686406393			
[s] Observation start time (MET)	236516630.184000	236515602.25728			
Observation start date	2005-06-30T11:02:46	2005-06-30T10:46:42			
[s] Observation end time (MET)	236526630.184000	236526764.50779			
Observation end date	2005-06-30T13:49:26	2005-06-30T13:52:44			
Read mode	TIMED	TIMED			

## 2.3 Aspect

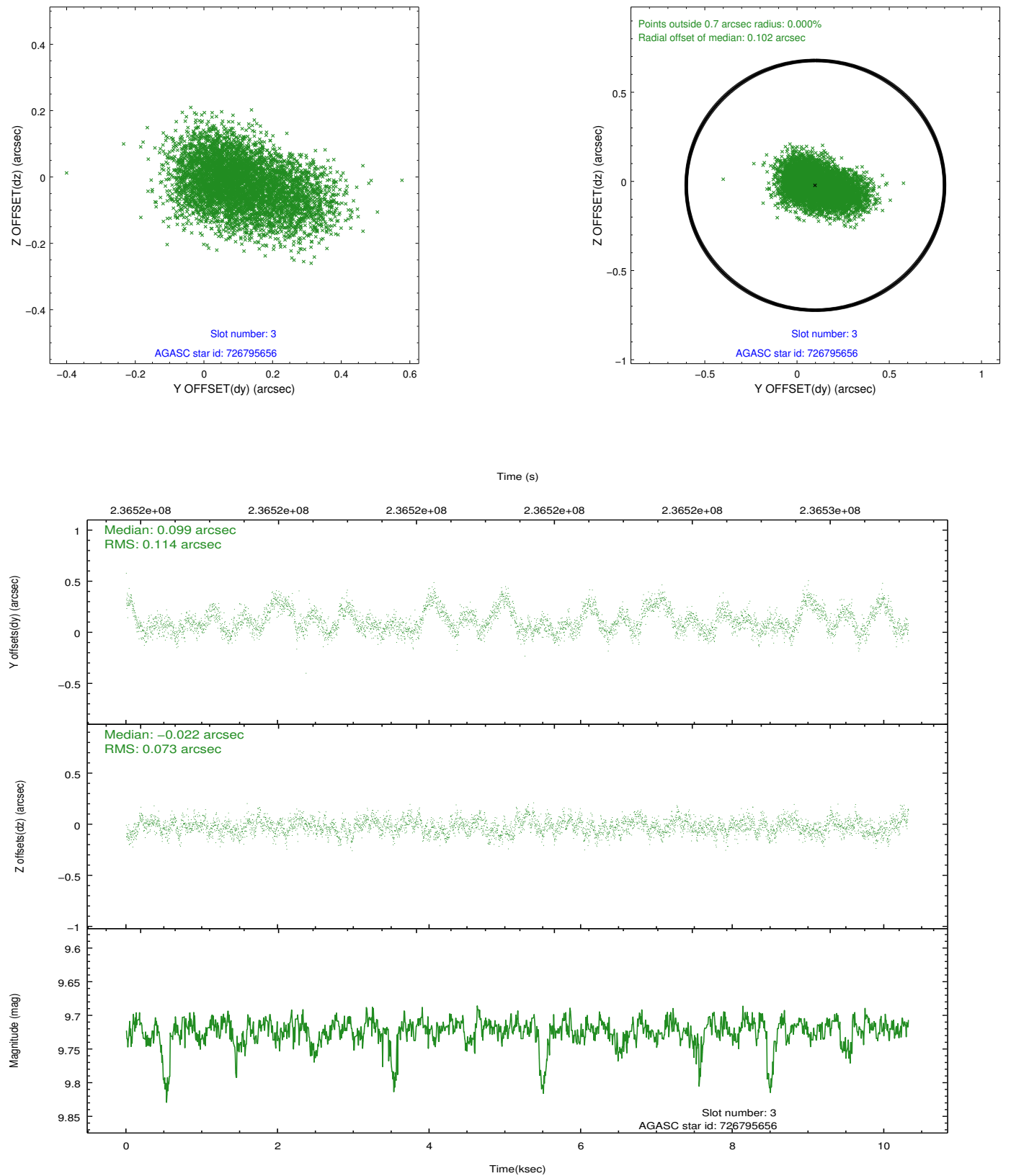


### Slot Statistics

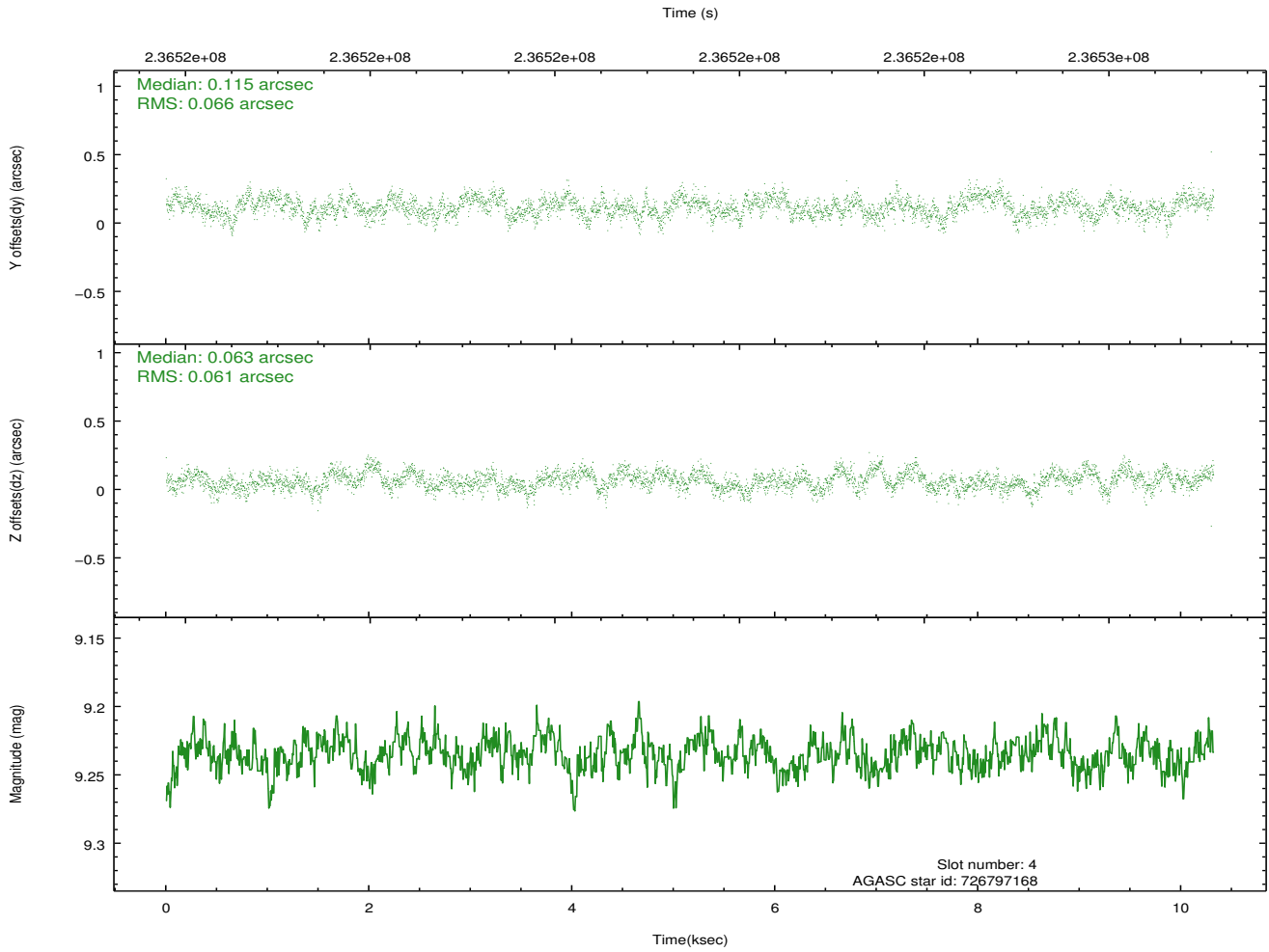
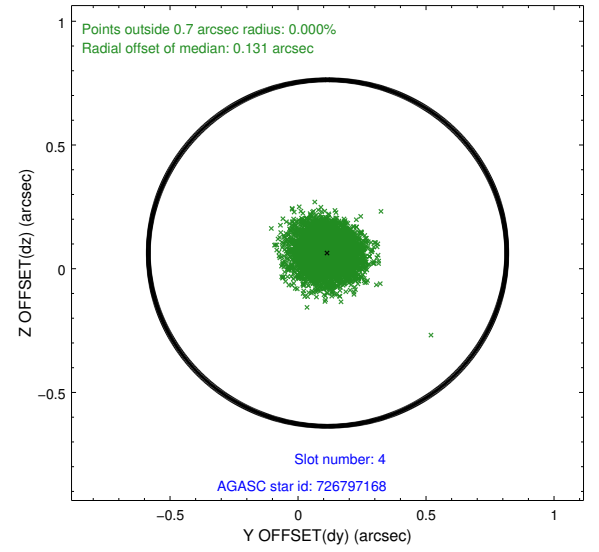
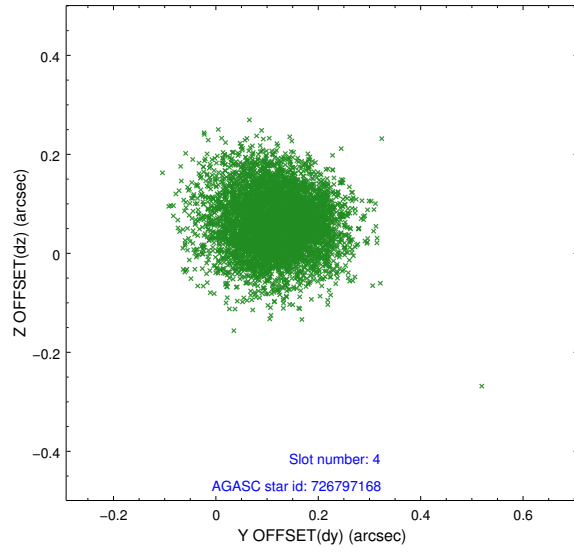
slot	status	id	mag	n_pts	med_dy	med_dz	dr1	dr2	ra	dec	mean_y	mean_z
0	FID	ACIS-S-2	7.10	2518	-0.069	-0.034	0.007	0.012	0.000000	0.000000	-759.16	-1731.14
1	FID	ACIS-S-4	7.21	2518	0.108	0.043	0.005	0.010	0.000000	0.000000	2154.03	176.94
2	FID	ACIS-S-5	7.23	2518	-0.070	0.000	0.007	0.012	0.000000	0.000000	-1811.38	171.08
3	GUIDE	726795656	9.72	5030	0.099	-0.022	0.142	0.242	202.576235	-8.591995	1865.85	-202.22
4	GUIDE	726797168	9.23	5034	0.115	0.063	0.096	0.154	202.692279	-8.774007	2320.28	425.34
5	GUIDE	726800704	9.03	5033	-0.333	0.038	0.100	0.156	202.986094	-7.587280	-2034.83	-193.68
6	GUIDE	726799000	10.07	5013	0.141	-0.202	0.283	0.433	202.090075	-8.567627	2430.54	-1840.64
7	GUIDE	726800992	9.58	5030	-0.037	0.113	0.123	0.200	202.715522	-8.788144	2336.65	520.77

## 2.4 Star Slots

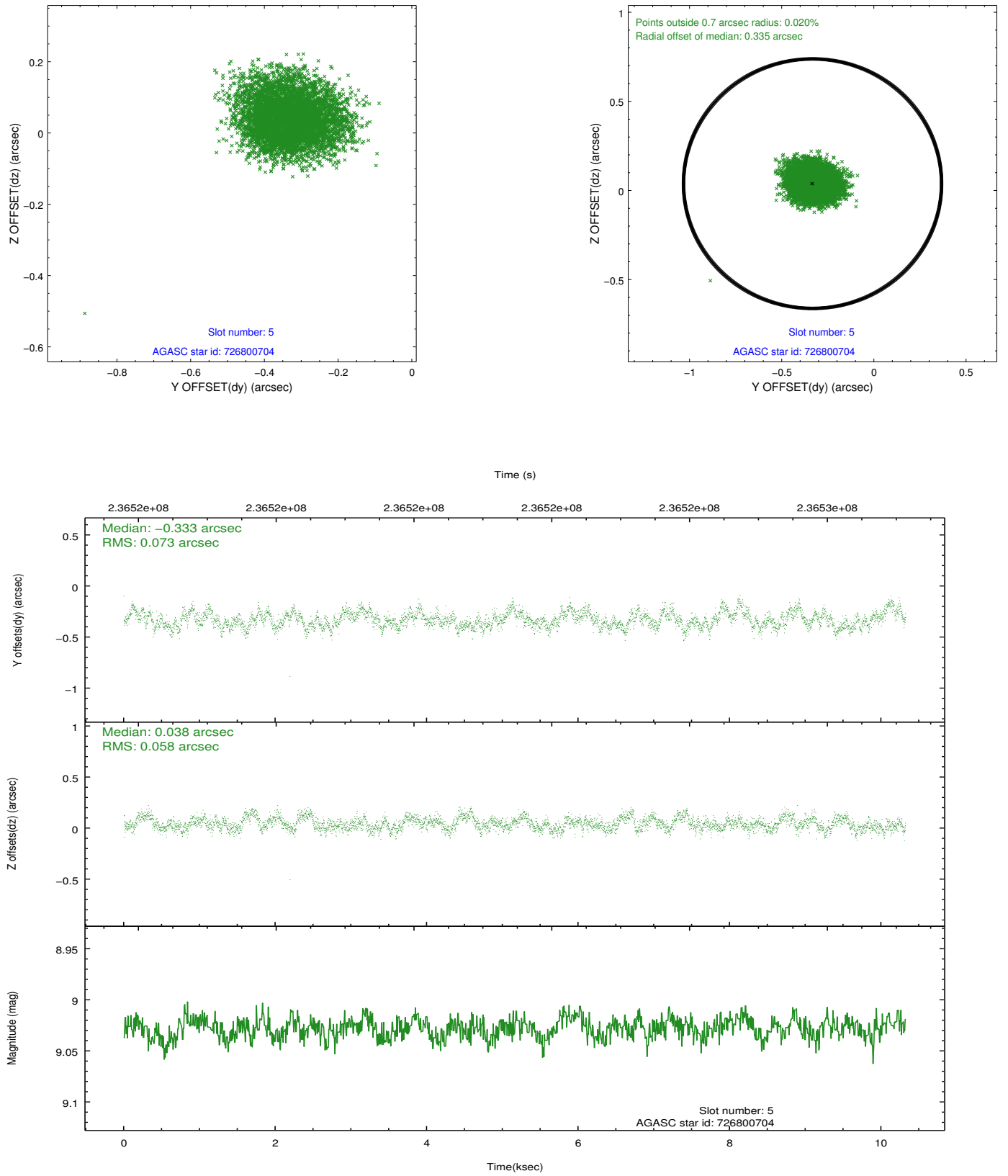
### 2.4.1 Slot 3



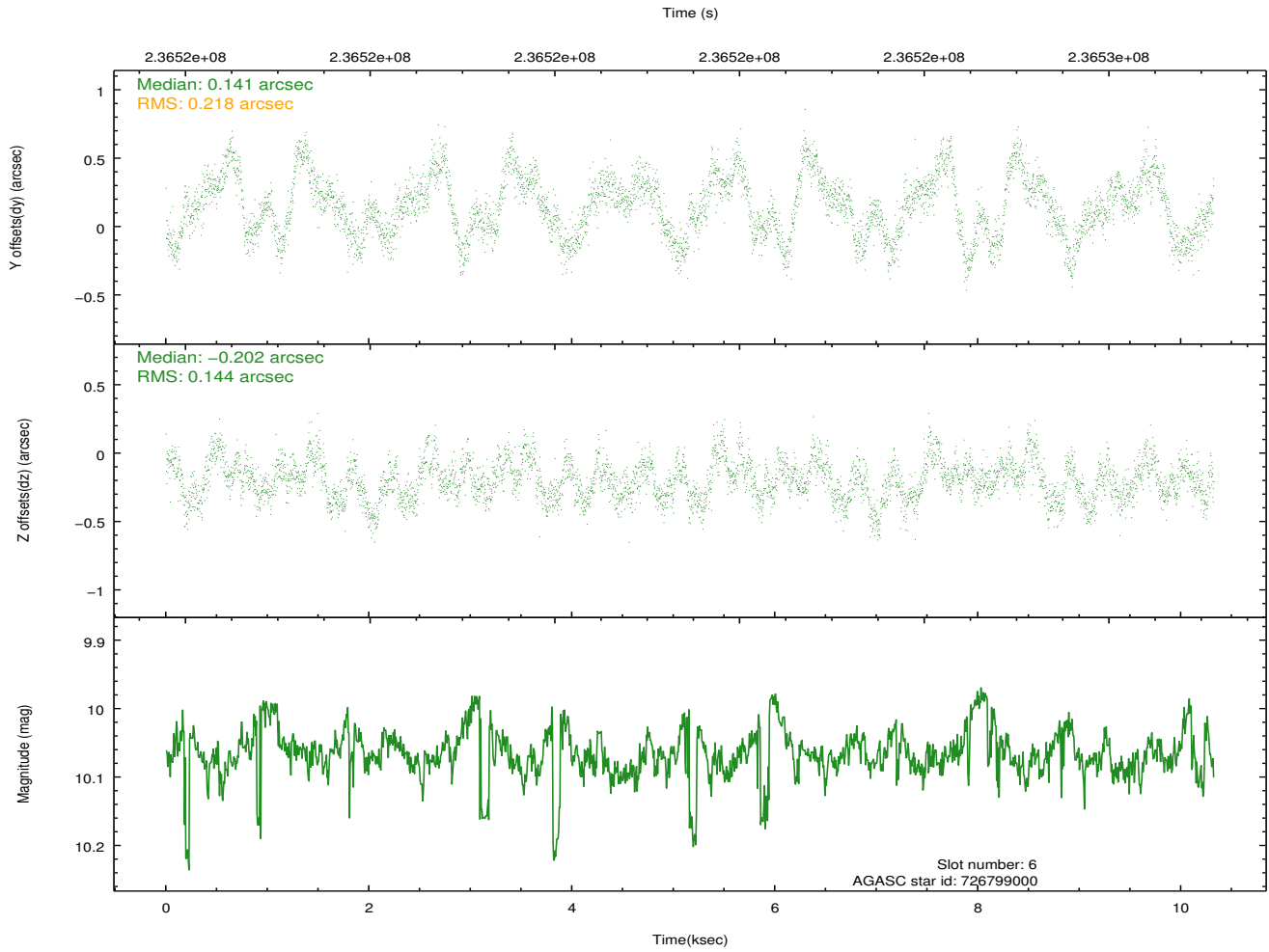
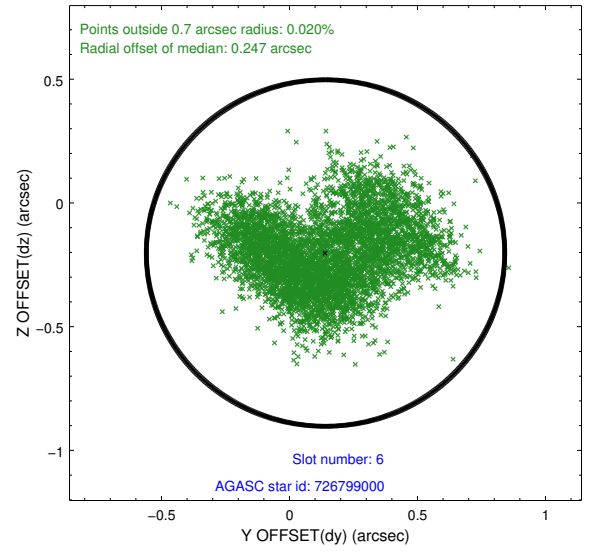
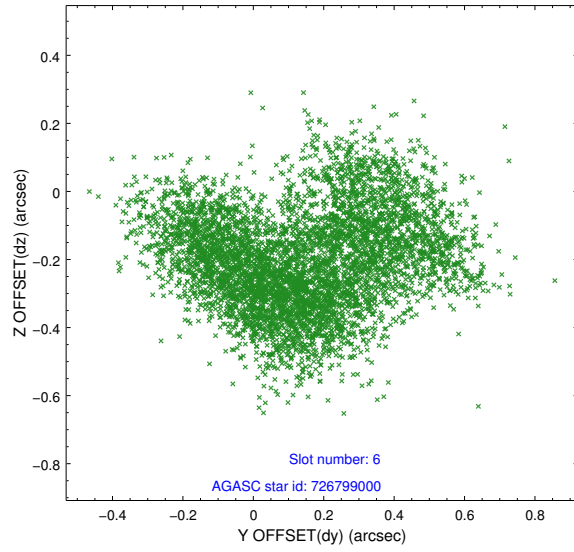
## 2.4.2 Slot 4



### 2.4.3 Slot 5

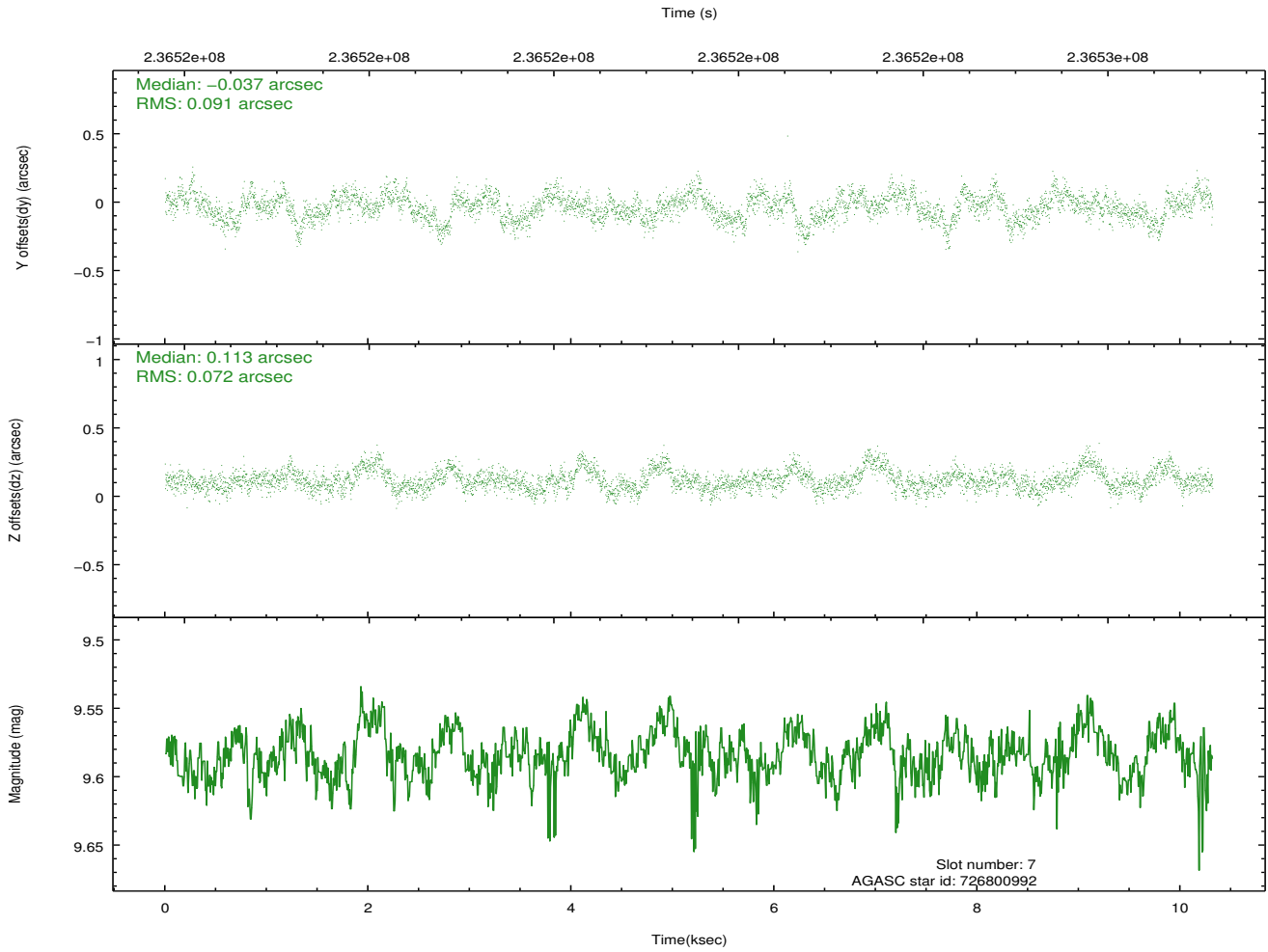
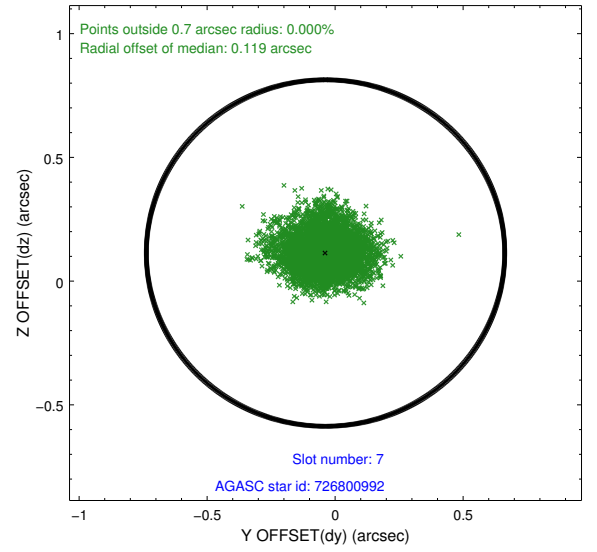
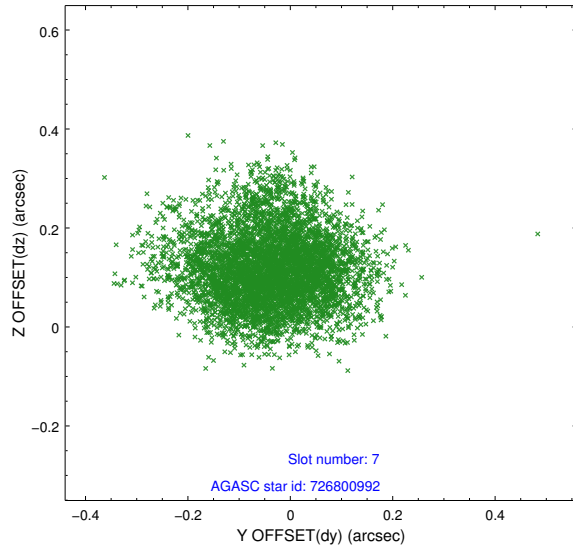


## 2.4.4 Slot 6



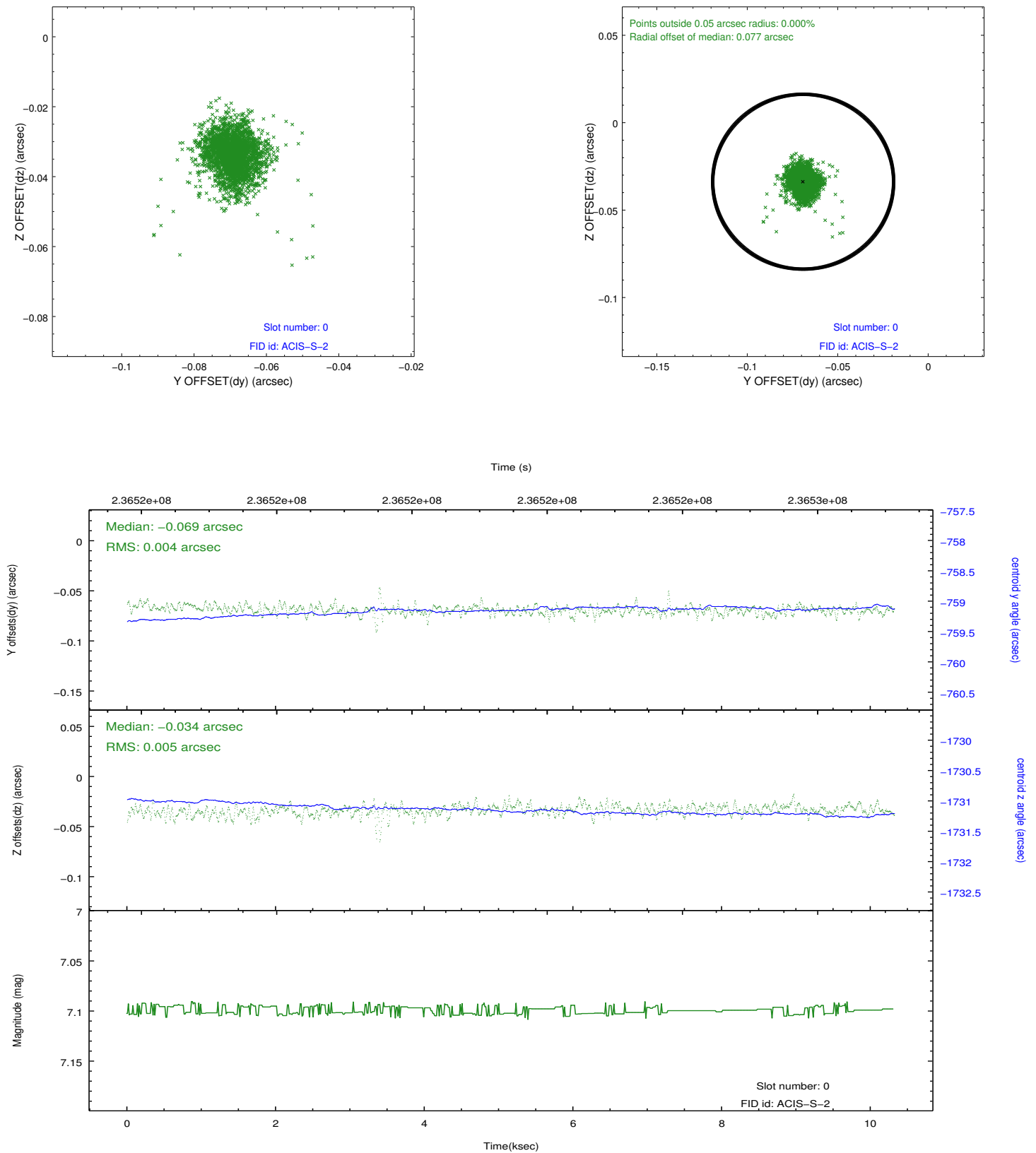


### 2.4.5 Slot 7

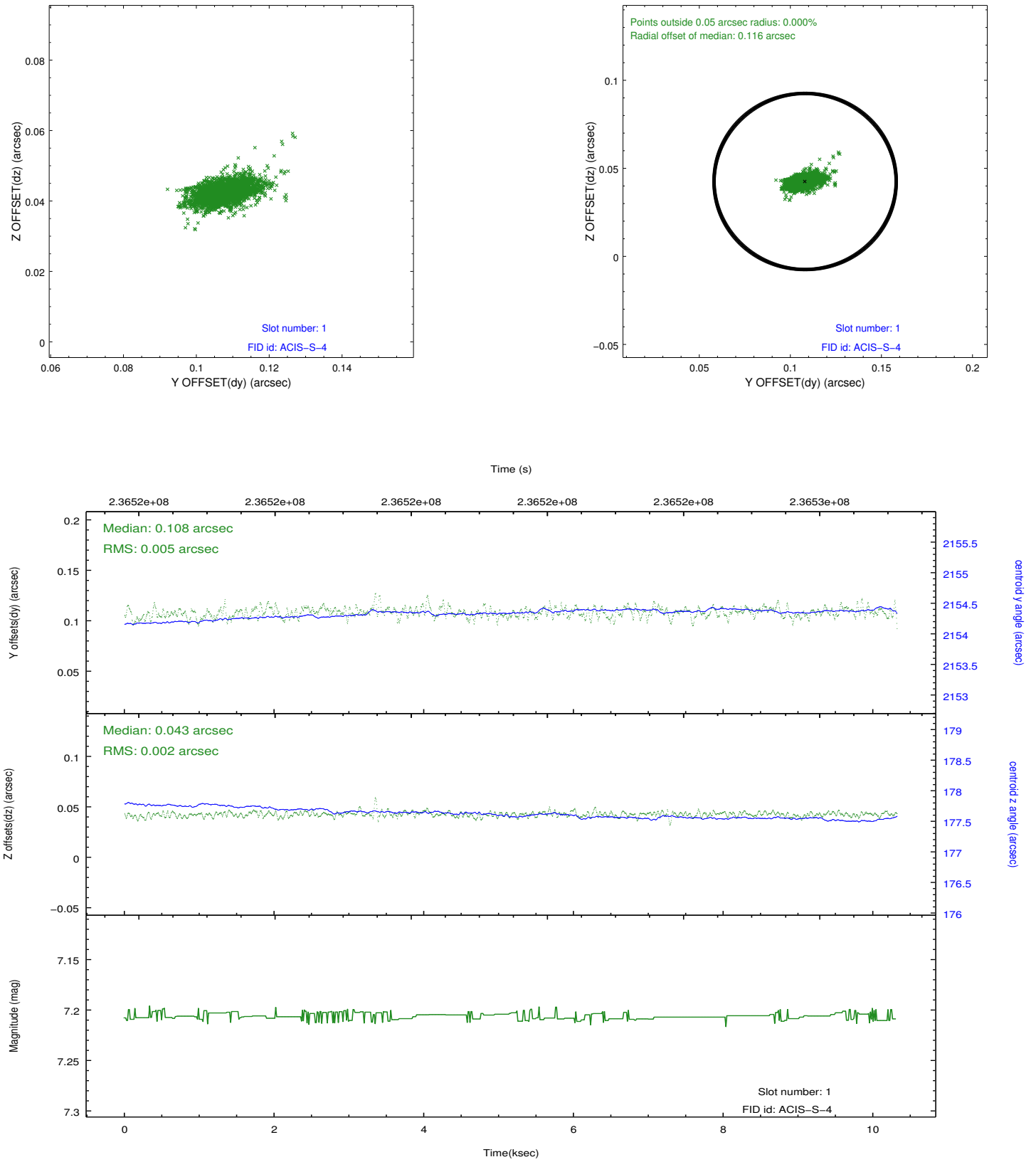


## 2.5 FID Slots

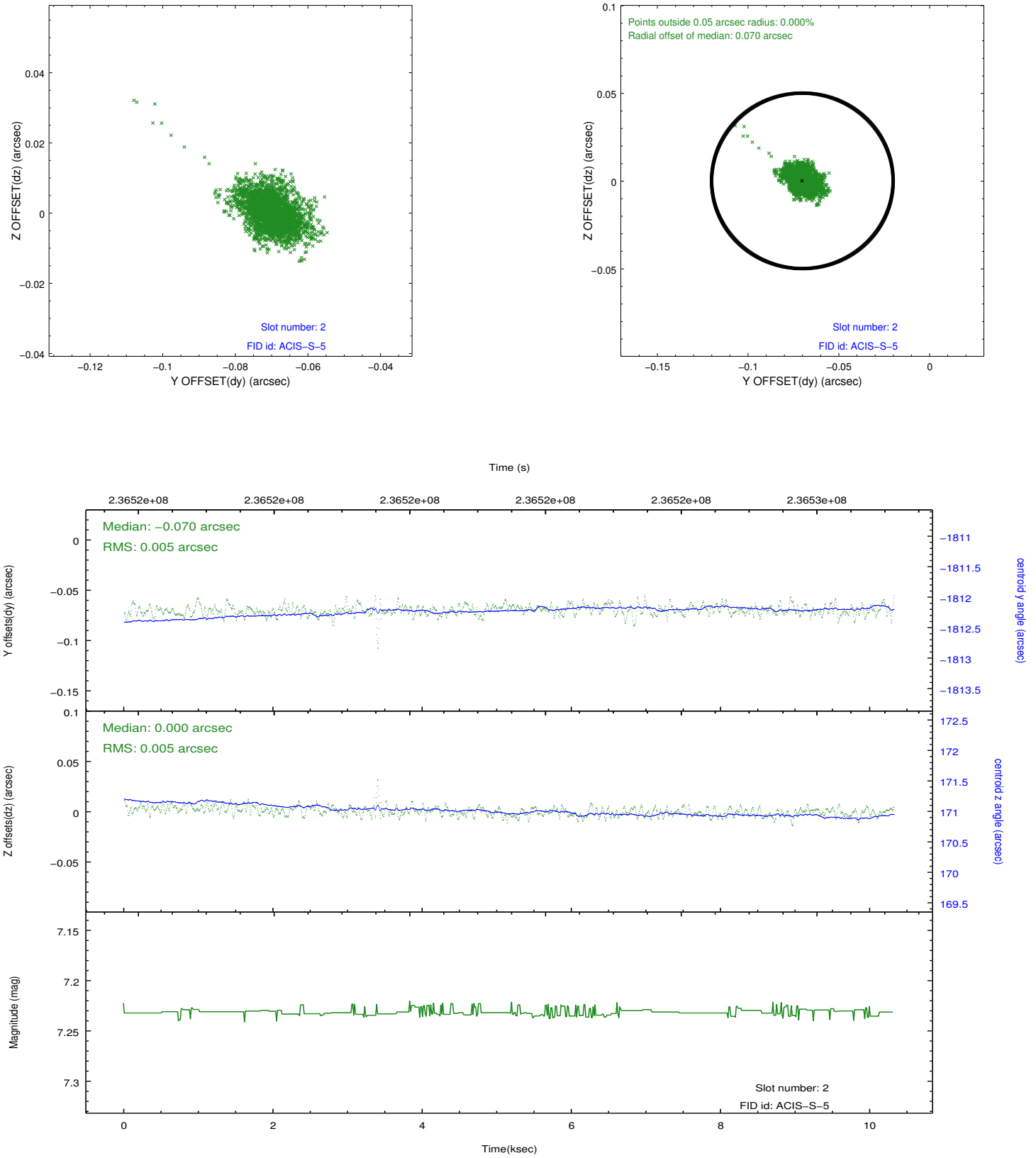
### 2.5.1 Slot 0



## 2.5.2 Slot 1



### 2.5.3 Slot 2



# A Summary

## A.1 Status

V&V Scientist	Jen Lauer
V&V Date (YYYY-MM-DD)	2013.01.17
V&V Edition	1
V&V Disposition and Status	OK
V&V Charge Time	9.961599

## A.2 Comments

This is a moving target. Users will need to run `sso_freeze` or similar software to position the events in the reference frame of the target.