

V&V Reference Report

L2 ASCDS Version : 7.6.7.2

Observation 5326 - L2 Version 001
Chandra X-Ray Center

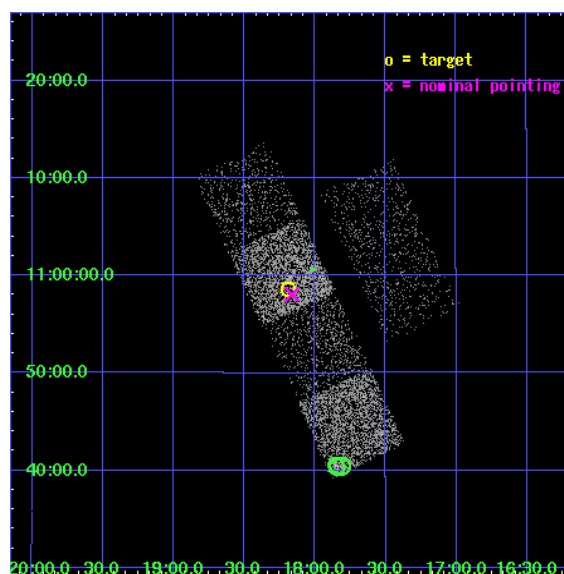
L2 Processing Date : May 18 2006

Contents

1	Front	2
2	OBI	3
2.1	OBI	3
2.1.1	Images	3
2.1.2	Bias	3
2.1.3	Parameters	4
2.1.4	Events	4
2.2	Compared Parameters	5
2.3	Aspect	6
2.4	Star Slots	9
2.4.1	Slot 3	9
2.4.2	Slot 4	10
2.4.3	Slot 5	11
2.4.4	Slot 6	12
2.4.5	Slot 7	13
2.5	FID Slots	14
2.5.1	Slot 0	14
2.5.2	Slot 1	15
2.5.3	Slot 2	16
3	Point Sources	17
A	Summary	18
A.1	Status	18
A.2	Comments	18

1 Front

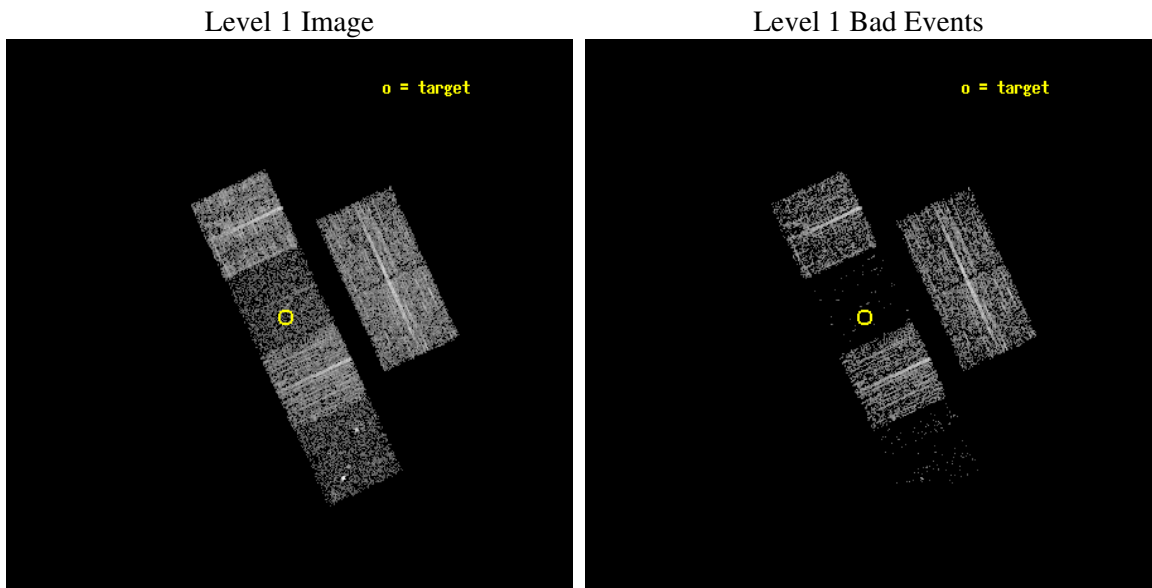
seq_num	100053
obs_id	5326
title	Chandra Snapshot Spectral Imaging of Comets C/2001 Q4 (NEAT) and C/2002 T7 (LINEAR)
observer	Dr. Carey Lisse
object	C/2001 Q4 (NEAT)
dtcycle	0
cycle	P
ra_targ	124.5464
dec_targ	10.975642
ra_nom	124.54082910199
dec_nom	10.967761108093
roll_nom	245.15766507783
revision	2
ontime	3471.9999870658
livetime	3428.0354326422
ontime2	3471.9999870658
ontime3	3471.9999870658
ontime5	3471.9999870658
ontime6	3471.9999870658
ontime7	3471.9999870658
ontime8	3471.9999870658
l2events	8919



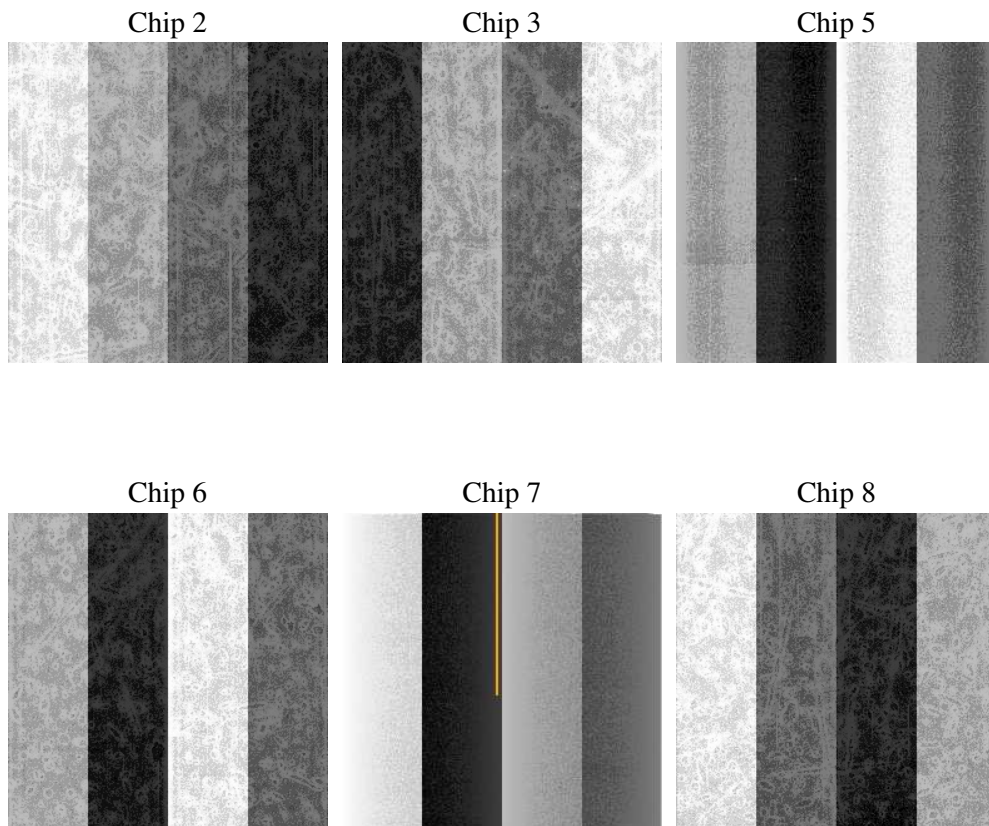
2 OBI

2.1 OBI

2.1.1 Images



2.1.2 Bias



2.1.3 Parameters

obi_num	0
ascdsver	7.6.7.2
caldbver	3.2.2
date	2006-05-19T00:25:19
revision	2

sched_exp_time	3300.000000
ontime	3675.2929020822
ontime2	3675.2929020822
ontime3	3675.2929020822
ontime5	3675.2929020822
ontime6	3675.2929020822
ontime7	3675.2929020822
ontime8	3675.2929020822
l1events	72058

2.1.4 Events

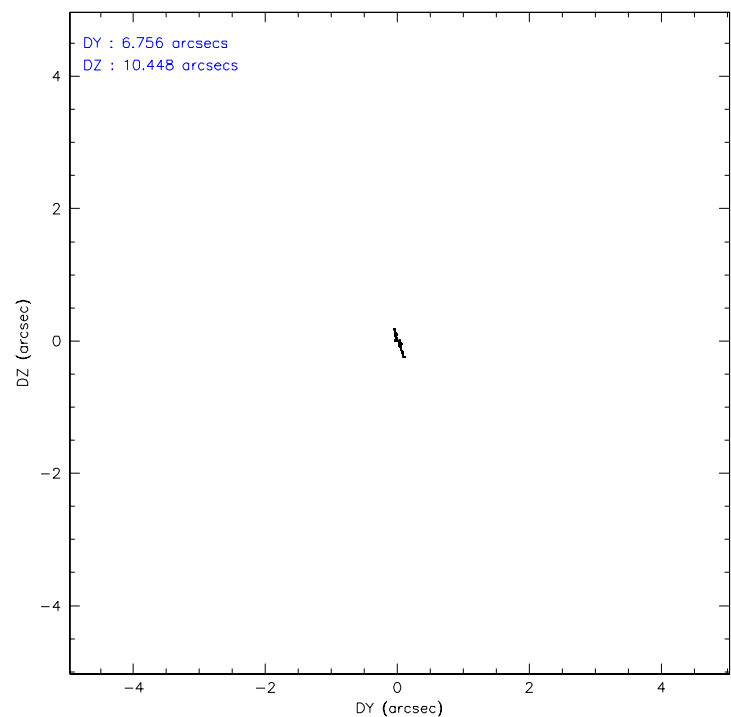
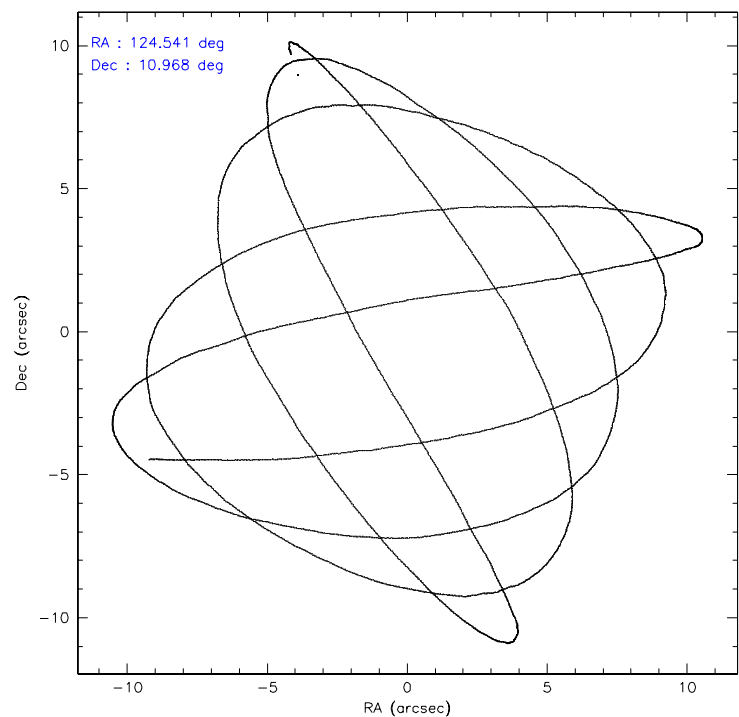
	ccd 2	ccd 3	ccd 5	ccd 6	ccd 7	ccd 8
level 1 events	16232	14270	4966	14968	4295	17327
rejected events	15514	13680	994	13941	603	13178
rejected %	95%	95%	20%	93%	14%	76%

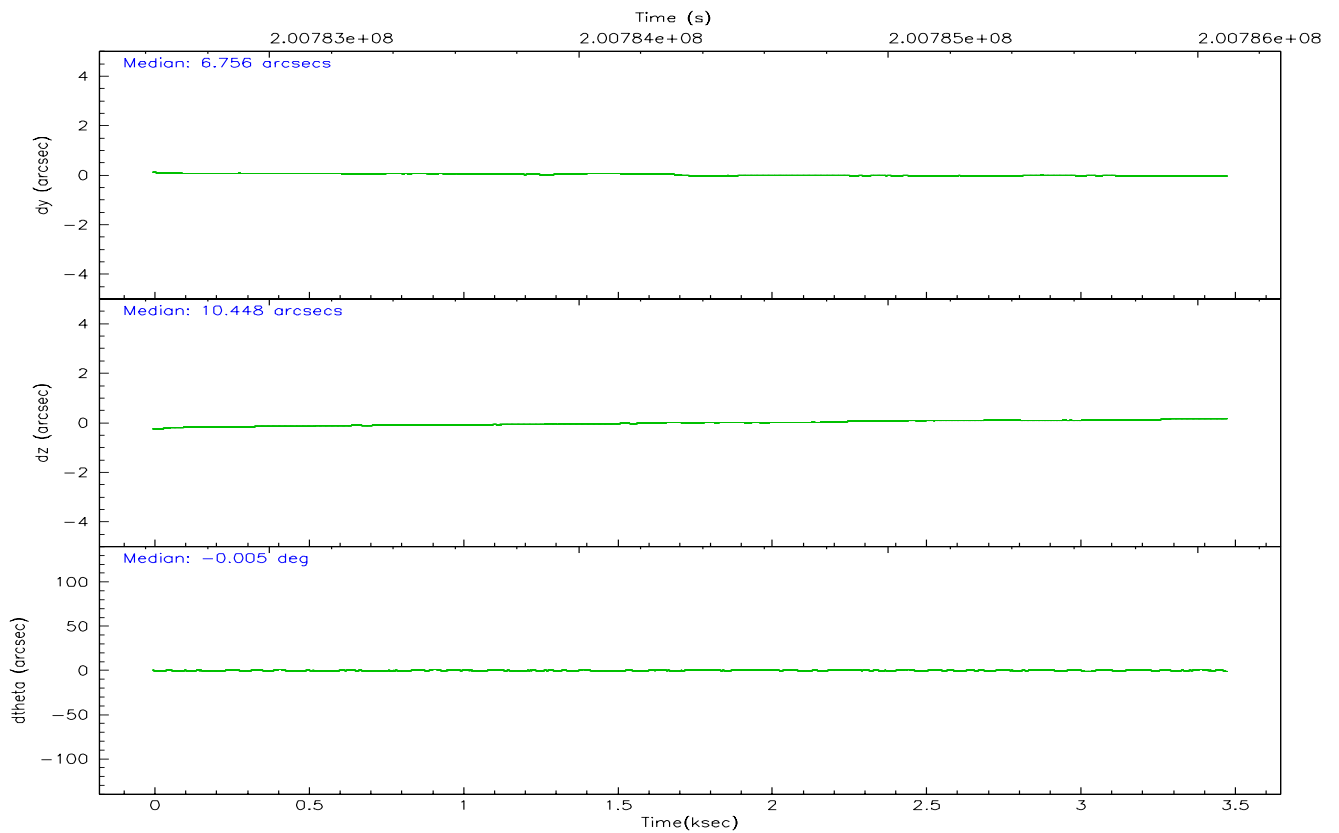
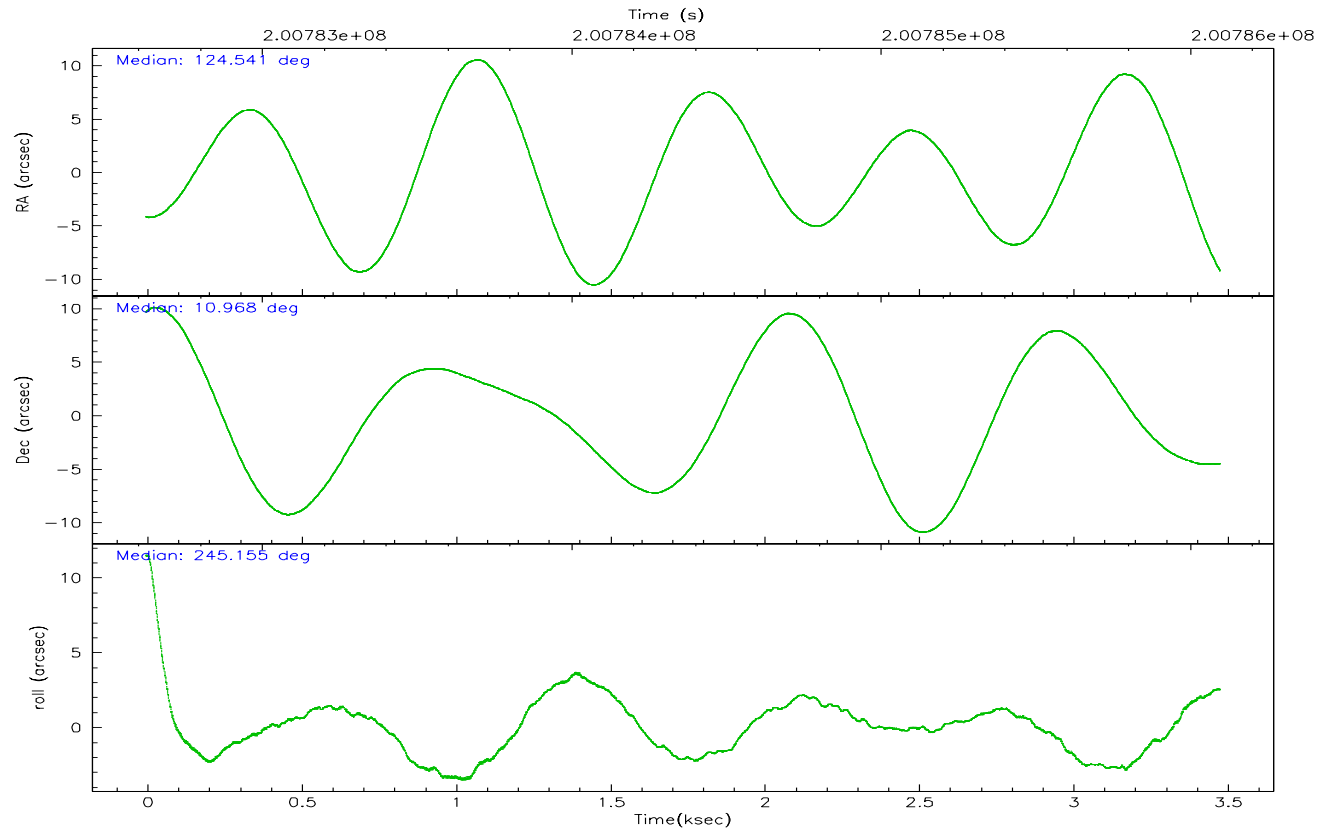
	ccd 2	ccd 3	ccd 5	ccd 6	ccd 7	ccd 8
grade 0 events	414	350	2122	732	1695	1322
	2%	2%	42%	4%	39%	7%
grade 1 events	8	3	45	6	6	12
	0%	0%	0%	0%	0%	0%
grade 2 events	132	61	1111	108	1026	914
	0%	0%	22%	0%	23%	5%
grade 3 events	75	95	397	102	406	518
	0%	0%	7%	0%	9%	2%
grade 4 events	92	72	313	92	403	446
	0%	0%	6%	0%	9%	2%
grade 5 events	16	13	119	8	65	80
	0%	0%	2%	0%	1%	0%
grade 6 events	53	51	284	44	339	1213
	0%	0%	5%	0%	7%	7%
grade 7 events	15442	13625	575	13876	355	12822
	95%	95%	11%	92%	8%	74%

2.2 Compared Parameters

Parameter	Planned	Actual	Parameter	Planned	Actual
Instrument	ACIS	ACIS	Obspar format version number	6	6
Detector	ACIS-235678	ACIS-235678	Obspar file type	PREDICTED	ACTUAL
Grating	NONE	NONE	Obspar update status	NONE	UPDATED
Data mode	VFAINT	VFAINT	On-chip summing requested	N	N
Observation mode	POINTING	POINTING	Subarray requested	NONE	NONE
Pointing RA	124.537891	124.5408291019853	Alternating exposures requested	N	N
Pointing Dec	10.994799	10.96776110809342	Primary exposure time	0.000000	3.2
Pointing Roll	245.001614	245.1576650778286			
Window start time	200361664.184000	200361664.184000			
Window stop time	201484864.184000	201484864.184000			
SIM focus pos (mm)	-0.684267	-0.6828225247311905			
SIM defocus (mm)	0	0.001444936568705701			
SIM translation stage pos (mm)	-190.132523	-190.1400660498719			
SIM translation stage offset (mm)	0	0.00754346686406393			
Observation start time	200782798.184000	200782422.72624			
Observation start date	2004-05-12T20:58:54	2004-05-12T20:53:42			
Observation end time	200786098.184000	200786830.73893			
Observation end date	2004-05-12T21:53:54	2004-05-12T22:07:10			
Read mode	TIMED	TIMED			

2.3 Aspect



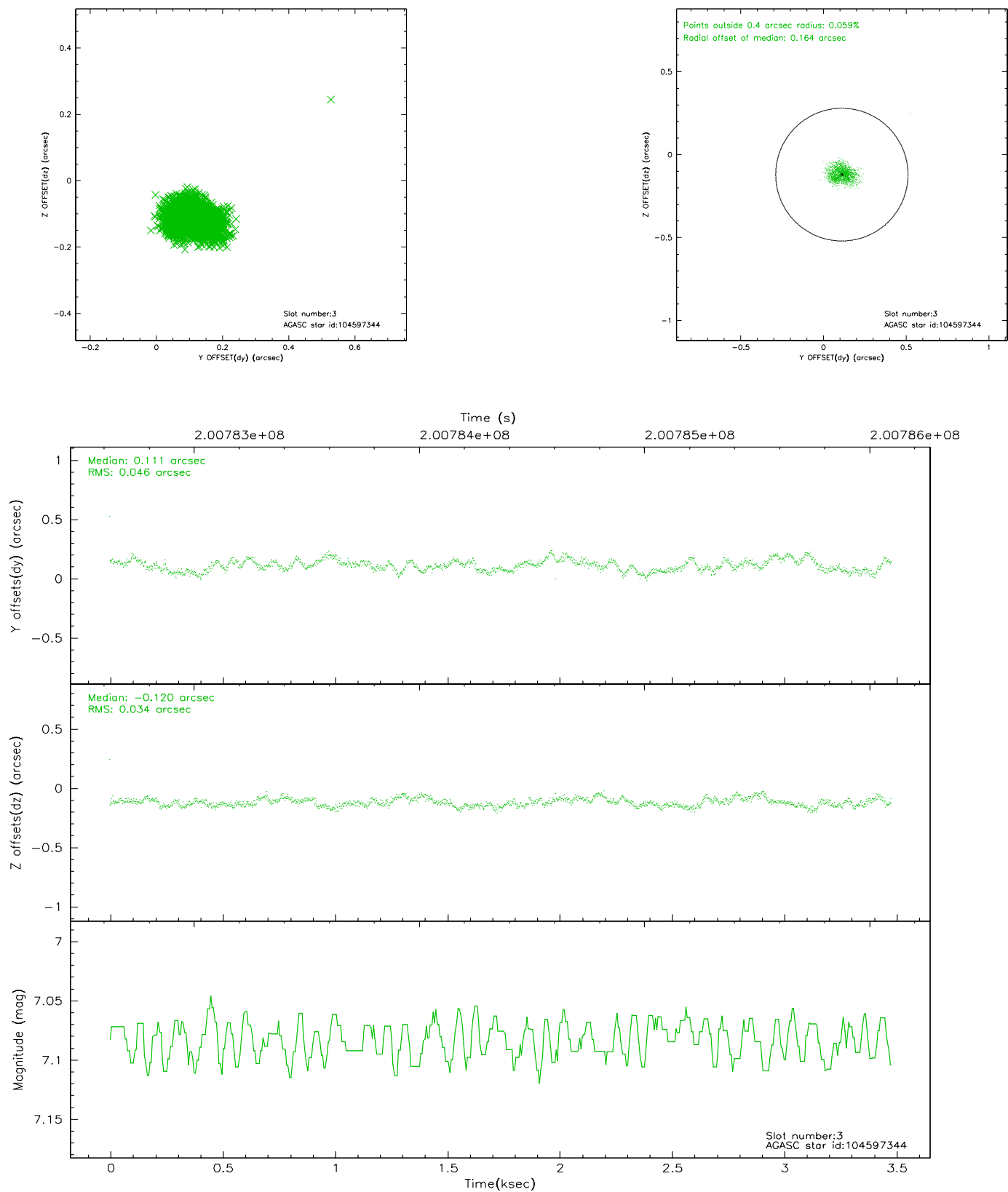


Slot Statistics

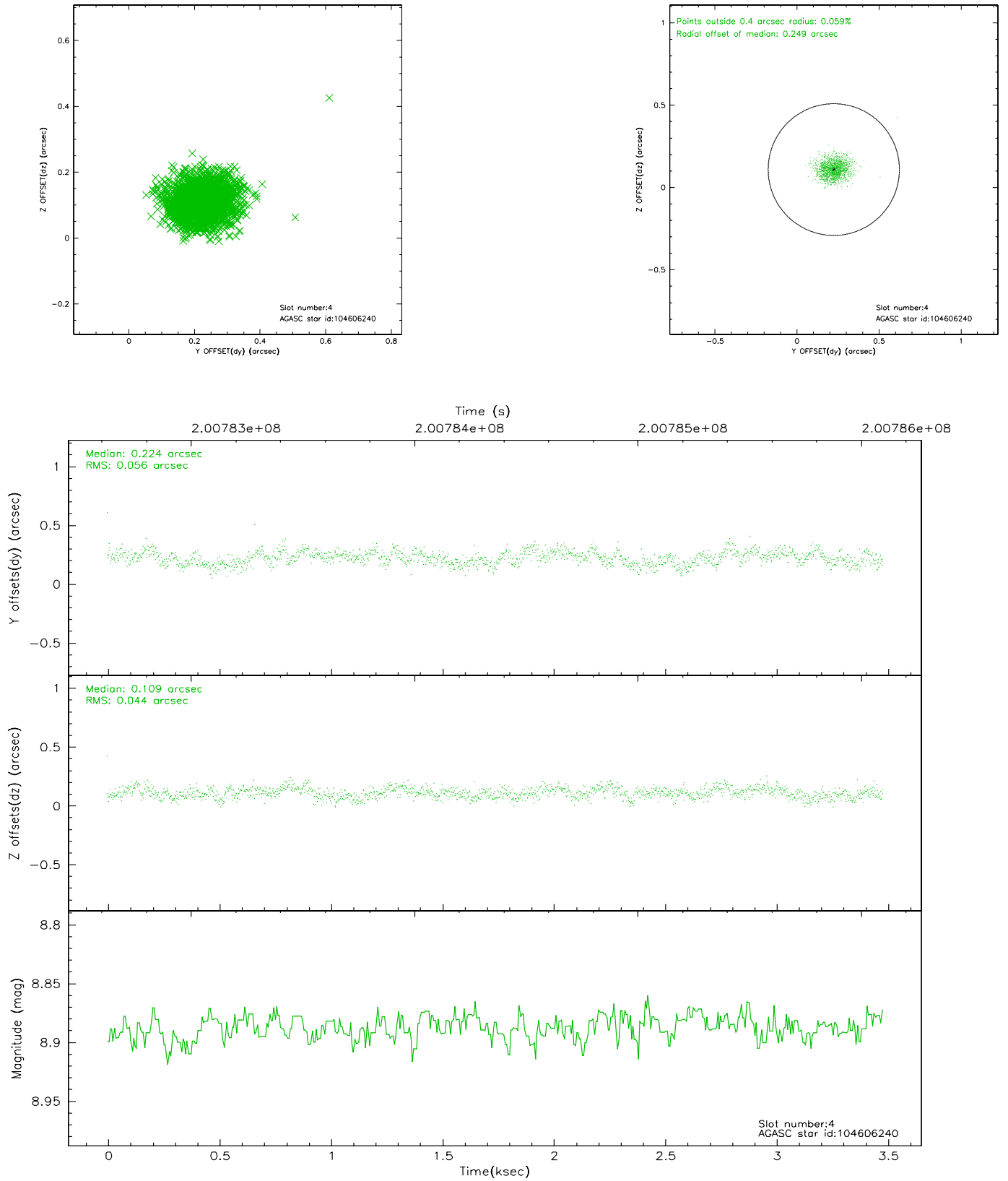
slot	status	id	mag	n_pts	med_dy	med_dz	dr1	dr2	ra	dec	mean_y	mean_z
0	FID	ACIS-S-2	7.10	849	-0.045	0.014	0.006	0.010	0.000000	0.000000	-759.53	-1731.70
1	FID	ACIS-S-4	7.20	849	0.031	0.018	0.005	0.009	0.000000	0.000000	2152.97	174.96
2	FID	ACIS-S-5	7.23	850	-0.017	-0.023	0.007	0.011	0.000000	0.000000	-1810.04	170.59
3	GUIDE	104597344	7.08	1699	0.111	-0.120	0.060	0.094	124.136828	11.043606	439.49	-1358.93
4	GUIDE	104606240	8.89	1698	0.224	0.109	0.074	0.120	124.221640	10.540343	1956.45	-323.76
5	GUIDE	104729968	9.26	1699	0.115	0.146	0.145	0.207	124.567030	10.276646	2301.31	1186.38
6	GUIDE	105255296	8.53	1699	-0.141	-0.159	0.059	0.096	124.534672	11.656846	-2153.36	-1016.93
7	GUIDE	105131768	5.94	1698	-0.309	0.023	0.053	0.079	124.140938	11.726243	-1797.04	-2381.91

2.4 Star Slots

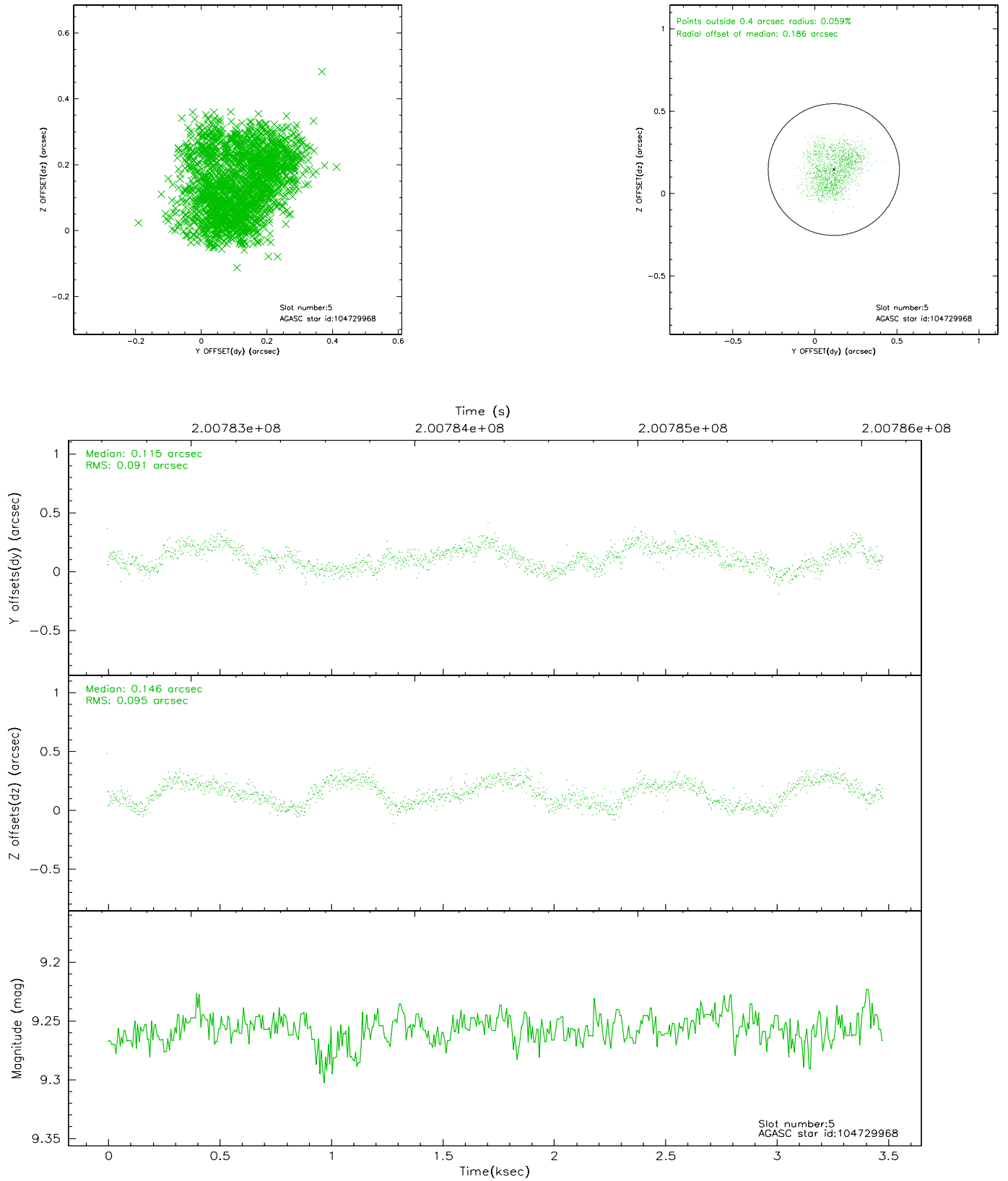
2.4.1 Slot 3



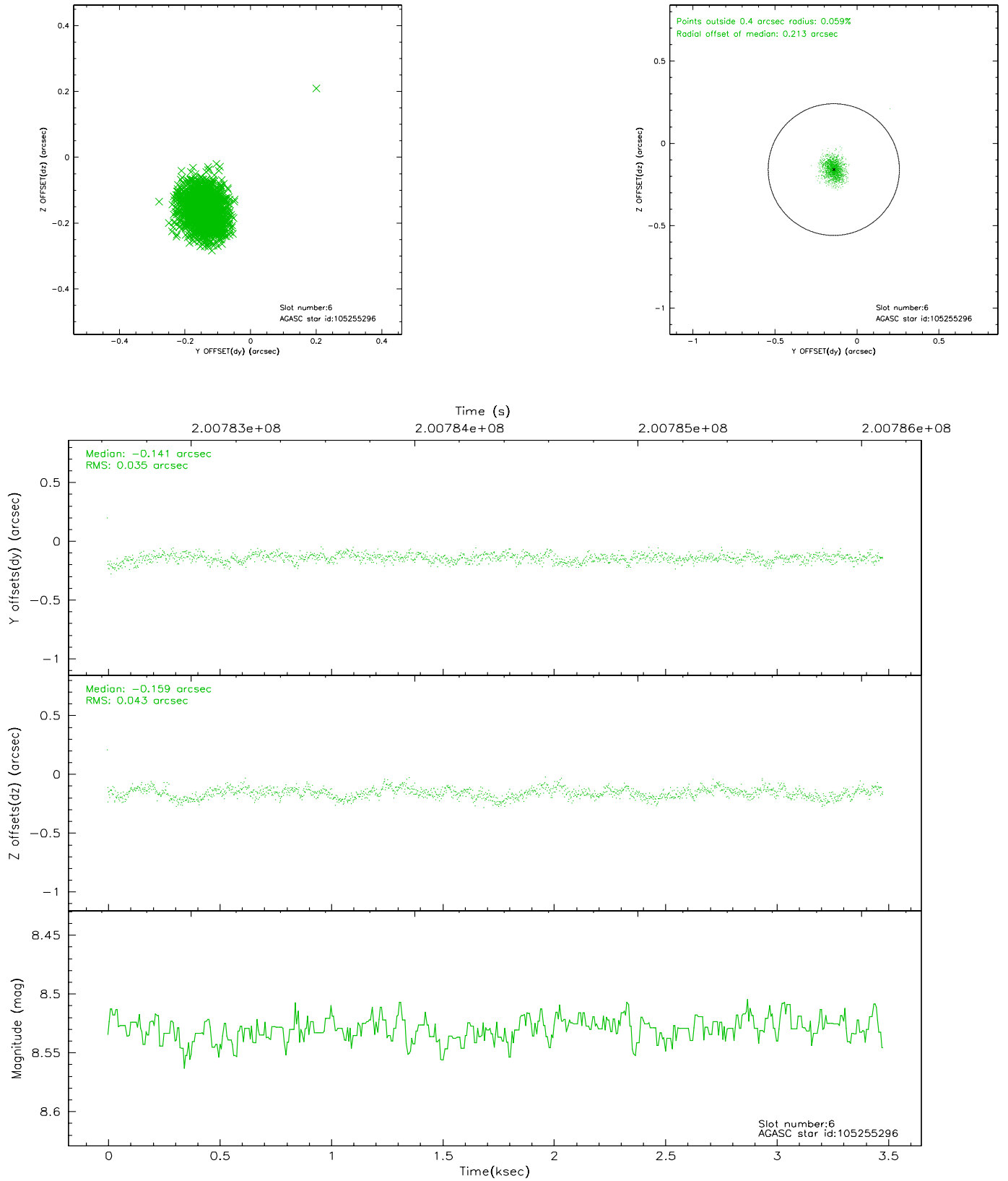
2.4.2 Slot 4



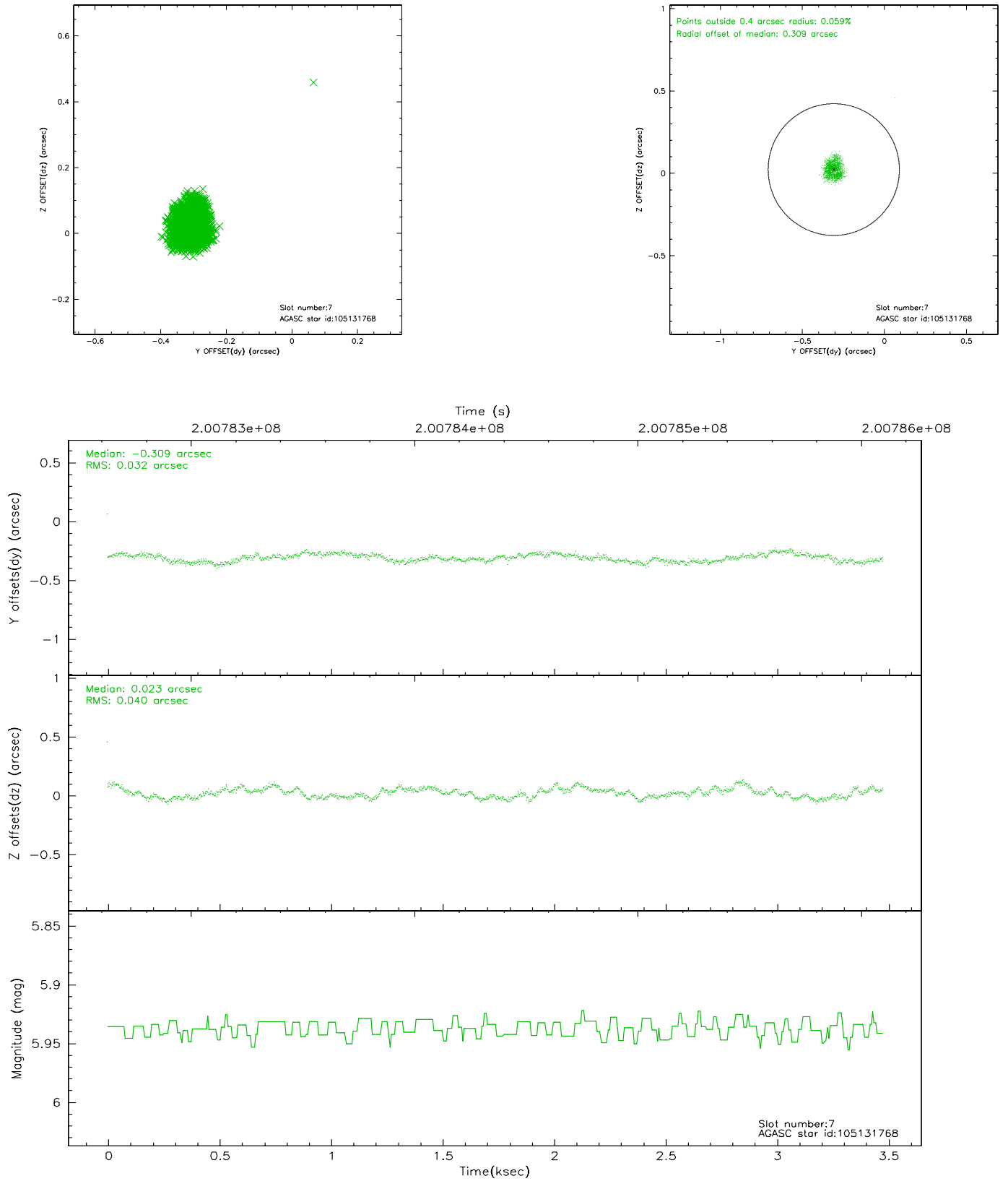
2.4.3 Slot 5



2.4.4 Slot 6

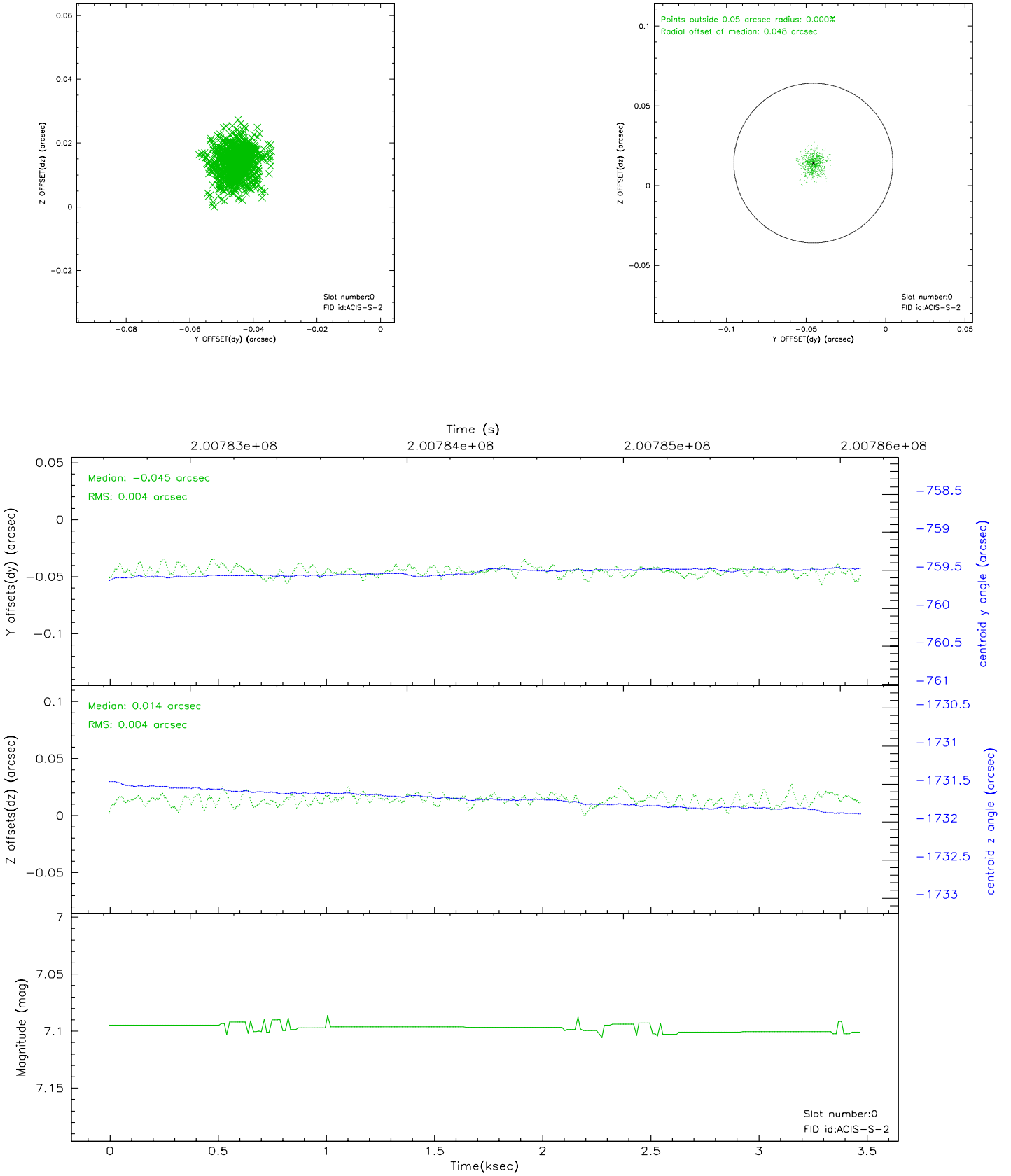


2.4.5 Slot 7

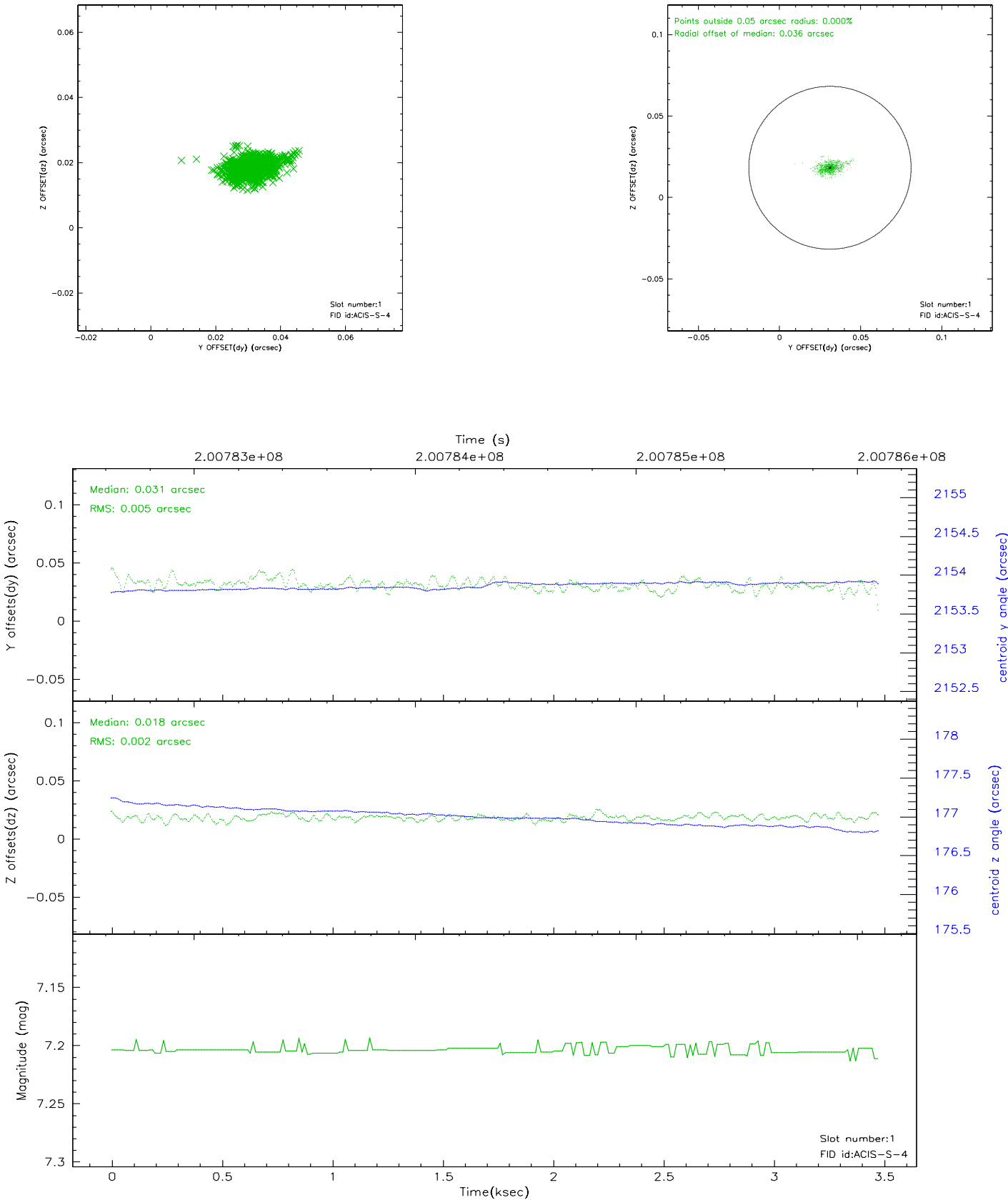


2.5 FID Slots

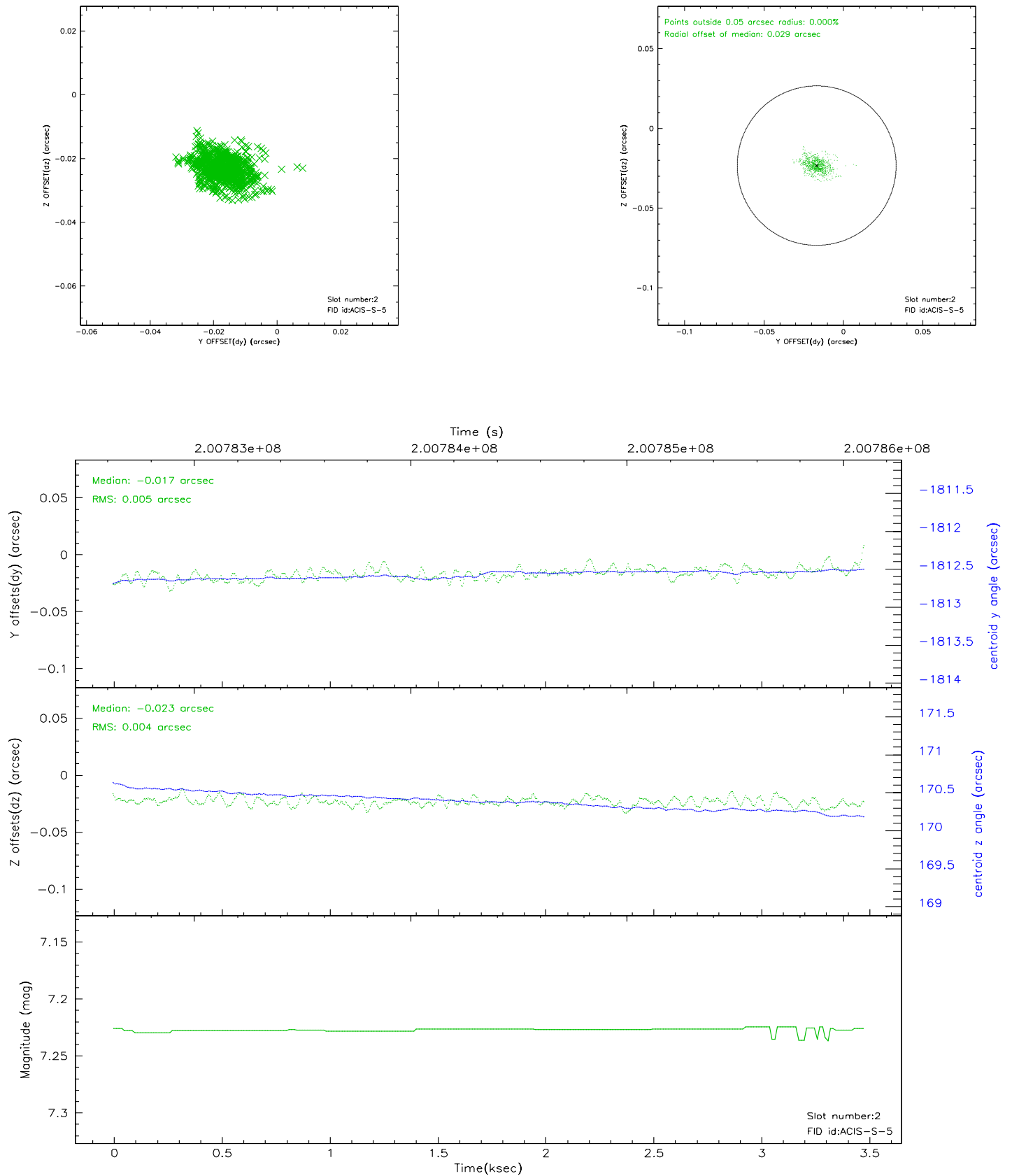
2.5.1 Slot 0



2.5.2 Slot 1



2.5.3 Slot 2



3 Point Sources

18.26 arcmin



A Summary

A.1 Status

V&V Scientist	Jen Lauer
V&V Date (YYYY-MM-DD)	2006.05.19
V&V Edition	1
V&V Disposition and Status	OK
V&V Charge Time	3.471

A.2 Comments

Window constraint met. Roll preference met.