

V&V Reference Report

L2 ASCDS Version : 10.2.2

Observation 52756 - L2 Version 1
Chandra X-Ray Center

L2 Processing Date : May 22 2014

Contents

1	Front	2
2	OBI	3
2.1	OBI	3
2.1.1	Images	3
2.1.2	Bias	3
2.1.3	Parameters	4
2.1.4	Events	4
2.2	Compared Parameters	5
2.3	Star Slots	6
2.4	FID Slots	6
A	Summary	7
A.1	Status	7
A.2	Comments	7

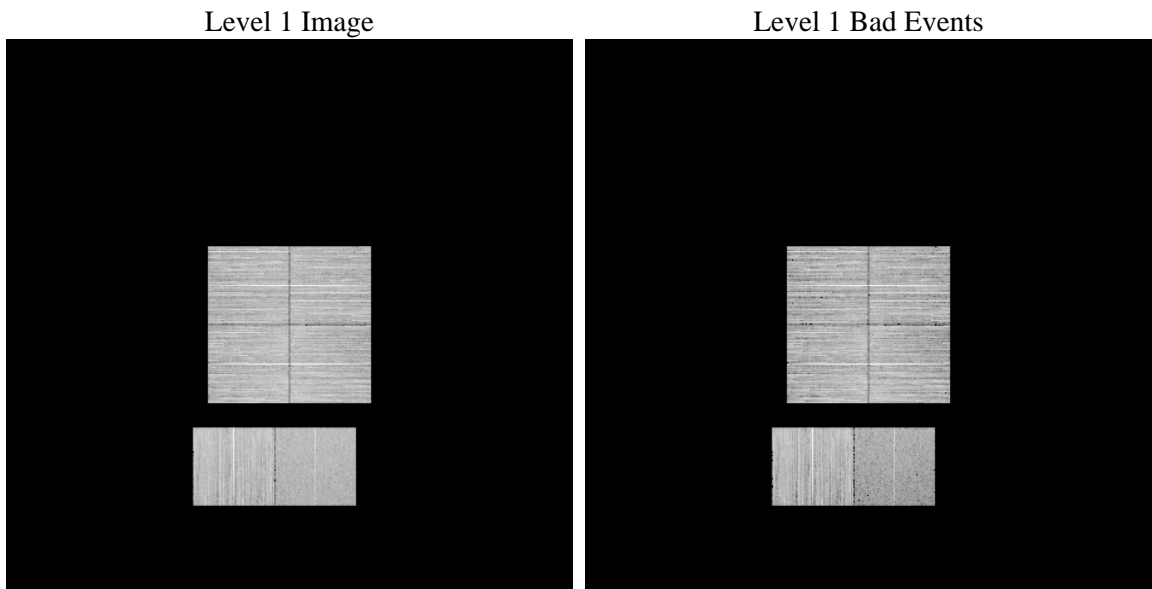
1 Front

seq_num	 	Sequence number
obs_id	52756	Observation id
title	ACIS-012367 diagnostics	Proposal title
observer	CHANDRA engineering request/realtime commanding	Principal investig
object	 	Source name
dtcycle	0	
cycle	P	events from which exps? Prim/Second/Both
ra_targ	0.0	Observer's specified target RA [deg]
dec_targ	0.0	Observer's specified target Dec [deg]
ra_nom	233.04291648264	Nominal RA [deg]
dec_nom	-53.986997529515	Nominal Dec [deg]
roll_nom	351.55362579804	Nominal Roll [deg]
revision	1	Processing version of data
ontime	7641.5999715924	Sum of GTIs [s]
livetime	7544.837431533	Livetime [s]
ontime0	7641.5999715924	Sum of GTIs [s]
ontime1	7641.5999715924	Sum of GTIs [s]
ontime2	7641.5999715924	Sum of GTIs [s]
ontime3	7641.5999715924	Sum of GTIs [s]
ontime6	7641.5999715924	Sum of GTIs [s]
ontime7	7641.5999715924	Sum of GTIs [s]
l2events	163031	Number of level 2 events

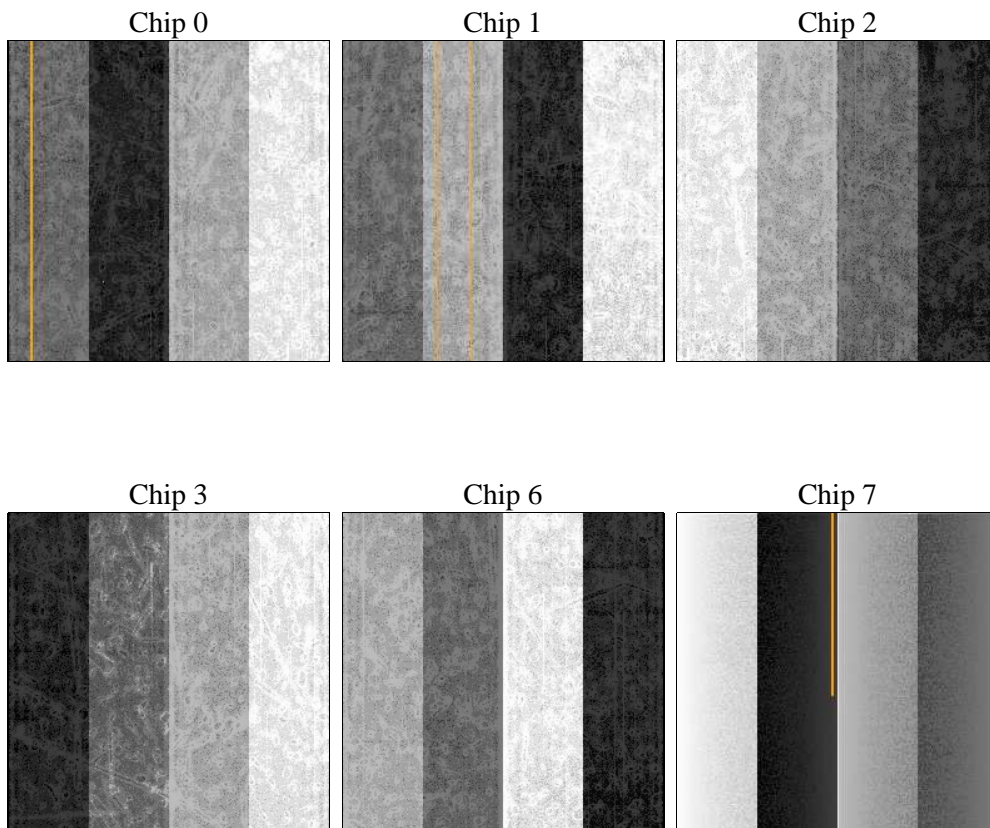
2 OBI

2.1 OBI

2.1.1 Images



2.1.2 Bias



2.1.3 Parameters

obi_num	1	Obi number	sched_exp_time	0.0	[s] Scheduled observation exposure time
ascdsver	10.2.2	Processing system revision	ontime	7641.5999715924	Sum of GTIs [s]
caldsver	4.6.1	 	ontime0	7641.5999715924	Sum of GTIs [s]
date	2014-05-22T04:29:13	Date and time of file creation	ontime1	7641.5999715924	Sum of GTIs [s]
revision	1	Processing version of data	ontime2	7641.5999715924	Sum of GTIs [s]
			ontime3	7641.5999715924	Sum of GTIs [s]
			ontime6	7641.5999715924	Sum of GTIs [s]
			ontime7	7641.5999715924	Sum of GTIs [s]
			l1events	792699	Number of level 1 events

2.1.4 Events

	ccd 0	ccd 1	ccd 2	ccd 3	ccd 6	ccd 7		ccd 0	ccd 1	ccd 2	ccd 3	ccd 6	ccd 7
level 1 events	131822	130286	142591	135227	142666	110107	grade 0 events	12458	12002	12476	12491	12428	6812
rejected events	107077	105425	118181	110682	117122	61293		9%	9%	8%	9%	8%	6%
rejected %	81%	80%	82%	81%	82%	55%	grade 1 events	61	55	56	73	47	77
								0%	0%	0%	0%	0%	0%
							grade 2 events	5034	5345	4890	4887	5335	11725
								3%	4%	3%	3%	3%	10%
							grade 3 events	1709	1724	1706	1705	1678	3943
								1%	1%	1%	1%	1%	3%
							grade 4 events	1700	1722	1718	1719	1716	4041
								1%	1%	1%	1%	1%	3%
							grade 5 events	2607	2646	2418	2944	2840	6671
								1%	2%	1%	2%	1%	6%
							grade 6 events	3937	4159	3696	3835	4482	22464
								2%	3%	2%	2%	3%	20%
							grade 7 events	104316	102633	115631	107573	114140	54374
								79%	78%	81%	79%	80%	49%

2.2 Compared Parameters

Parameter	Planned	Actual	Parameter	Planned	Actual
Instrument	ACIS	ACIS	Obspar format version number	7	7
Detector	ACIS-012367	ACIS-012367	Obspar file type	PREDICTED	ACTUAL
Grating	NONE	NONE	Obspar update status	NONE	UPDATED
Data mode	FAINT	FAINT	Number of optional ACIS chips dropped	0	0
Observation mode	SECONDARY	SECONDARY	On-chip summing requested	N	N
[deg] Pointing RA	0	233.0429164826359	Subarray requested	NONE	NONE
[deg] Pointing Dec	0	-53.98699752951508	Alternating exposures requested	N	N
[deg] Pointing Roll	0.0	351.5536257980377	[s] Primary exposure time	3.2	3.2
[mm] SIM focus pos	-1.429586	-1.428180813131781			
[mm] SIM defocus	0.1037507710433287	0.1051558262725154			
[mm] SIM translation stage pos	250.455976	250.466033080201			
[mm] SIM translation stage offset	0	-0.01005468664627074			
[s] Observation start time (MET)	517066647.713105	517066646.68811			
Observation start date	2014-05-21T13:37:28	2014-05-21T13:37:26			
[s] Observation end time (MET)	517076315.51364	517076314.48864			
Observation end date	2014-05-21T16:18:36	2014-05-21T16:18:34			
Read mode	TIMED	TIMED			

2.3 Star Slots

2.4 FID Slots

A Summary

A.1 Status

V&V Scientist	Jen Lauer
V&V Date (YYYY-MM-DD)	2014.05.22
V&V Edition	1
V&V Disposition and Status	OK
V&V Charge Time	7.6415999715924

A.2 Comments