

V&V Reference Report

L2 ASCDS Version : 7.6.8

Observation 5146 - L2 Version 001
Chandra X-Ray Center

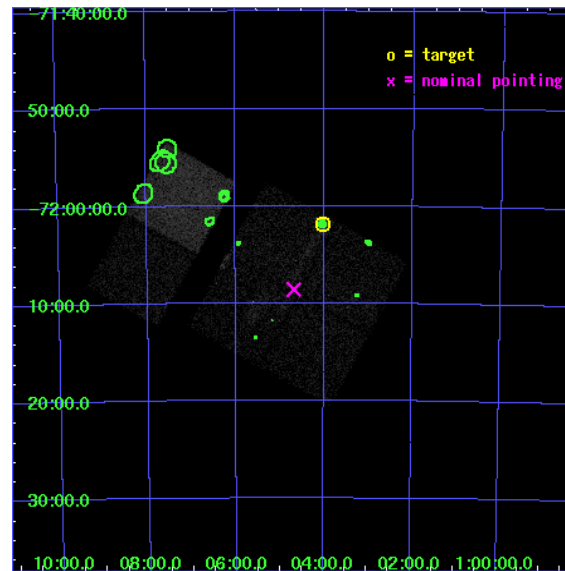
L2 Processing Date : Jun 23 2006

Contents

1	Front	2
2	OBI	3
2.1	OBI	3
2.1.1	Images	3
2.1.2	Bias	3
2.1.3	Parameters	4
2.1.4	Events	4
2.2	Compared Parameters	5
2.3	Aspect	6
2.4	Star Slots	9
2.4.1	Slot 3	9
2.4.2	Slot 4	10
2.4.3	Slot 5	11
2.4.4	Slot 6	12
2.4.5	Slot 7	13
2.5	FID Slots	14
2.5.1	Slot 0	14
2.5.2	Slot 1	15
2.5.3	Slot 2	16
3	Point Sources	17
A	Summary	18
A.1	Status	18
A.2	Comments	18

1 Front

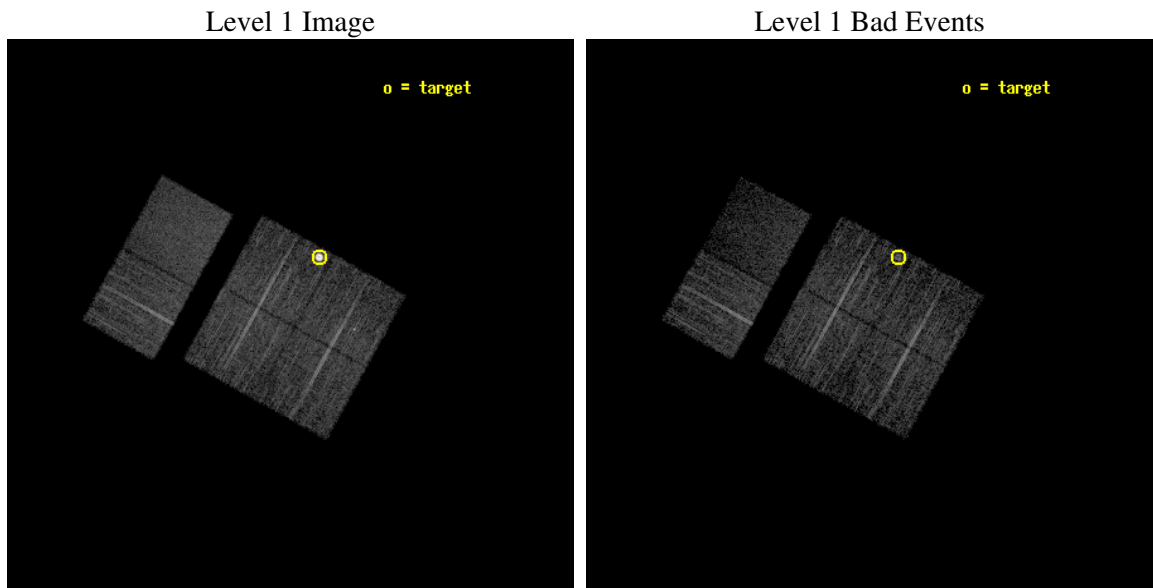
seq_num	590344
obs_id	5146
title	AO5A ACIS-I Calibration Observations of E0102-72
observer	Dr. CXC Calibration
object	E0102-72[I3,-120,-7,0.5,0]
dtcycle	0
cycle	P
ra_targ	16.01
dec_targ	-72.032028
ra_nom	16.17022054393
dec_nom	-72.142853258044
roll_nom	299.05242987409
revision	2
ontime	8214.399969399
livetime	8110.3842908686
ontime0	8214.399969399
ontime1	8214.399969399
ontime2	8211.1589991152
ontime3	8214.399969399
ontime6	8214.399969399
ontime7	8214.399969399
l2events	55216



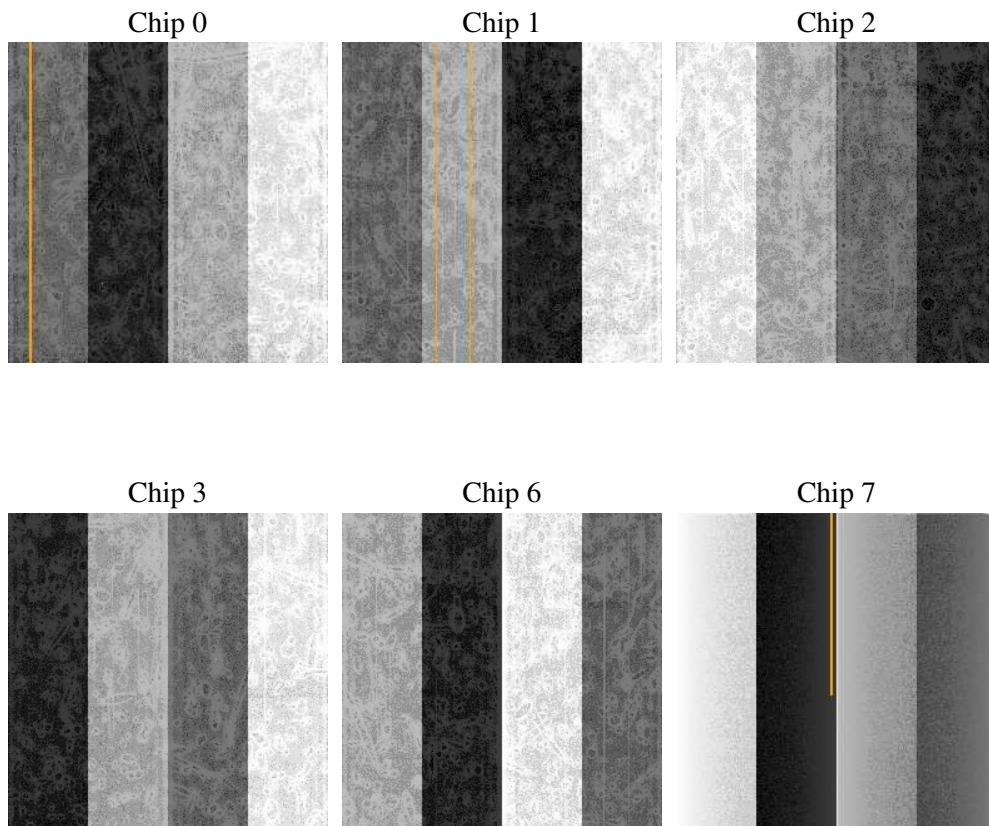
2 OBI

2.1 OBI

2.1.1 Images



2.1.2 Bias



2.1.3 Parameters

obi_num	0
ascdsver	7.6.8
caldsver	3.2.2
date	2006-06-23T18:40:01
revision	2

sched_exp_time	8249.678000
ontime	8219.1787272096
ontime0	8222.4197473228
ontime1	8222.4197473228
ontime2	8215.9377569258
ontime3	8219.1787272096
ontime6	8219.1787073314
ontime7	8219.1787272096
l1events	242019

2.1.4 Events

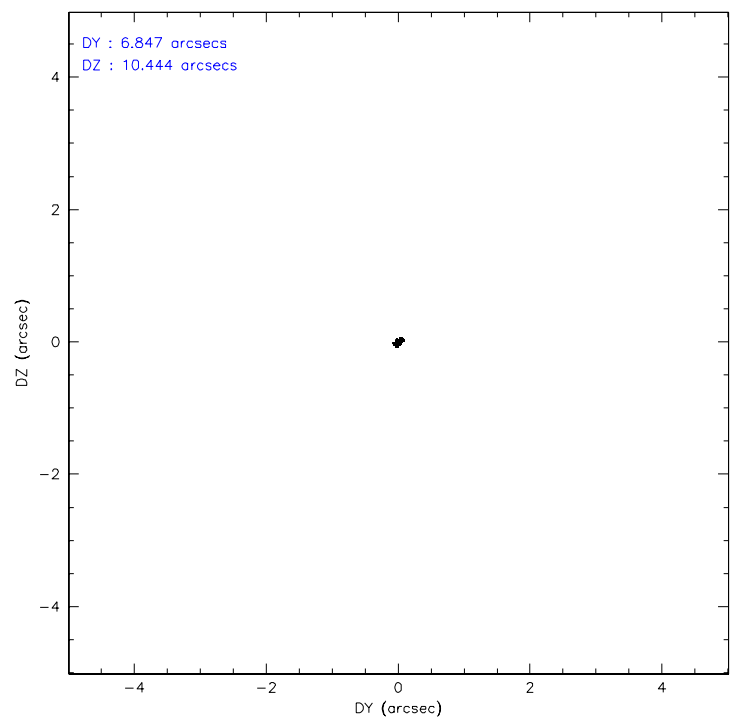
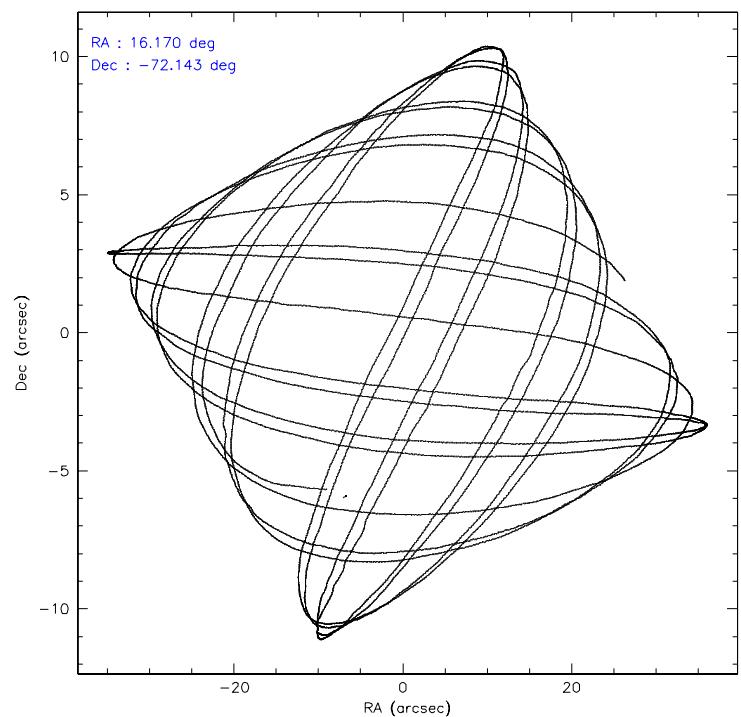
	ccd 0	ccd 1	ccd 2	ccd 3	ccd 6	ccd 7
level 1 events	34259	35218	38766	59003	38658	36115
rejected events	30348	30569	34388	33068	34684	19835
rejected %	88%	86%	88%	56%	89%	54%

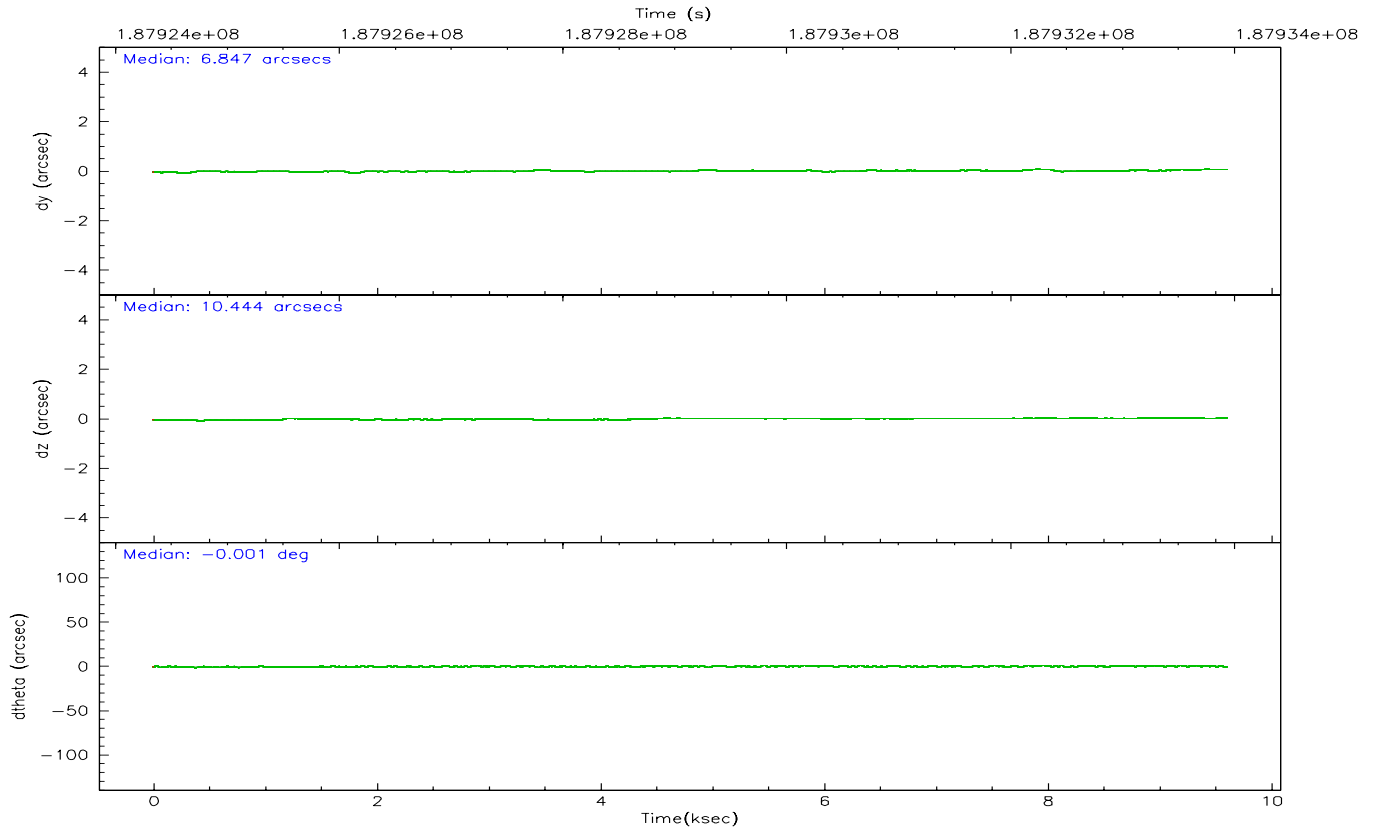
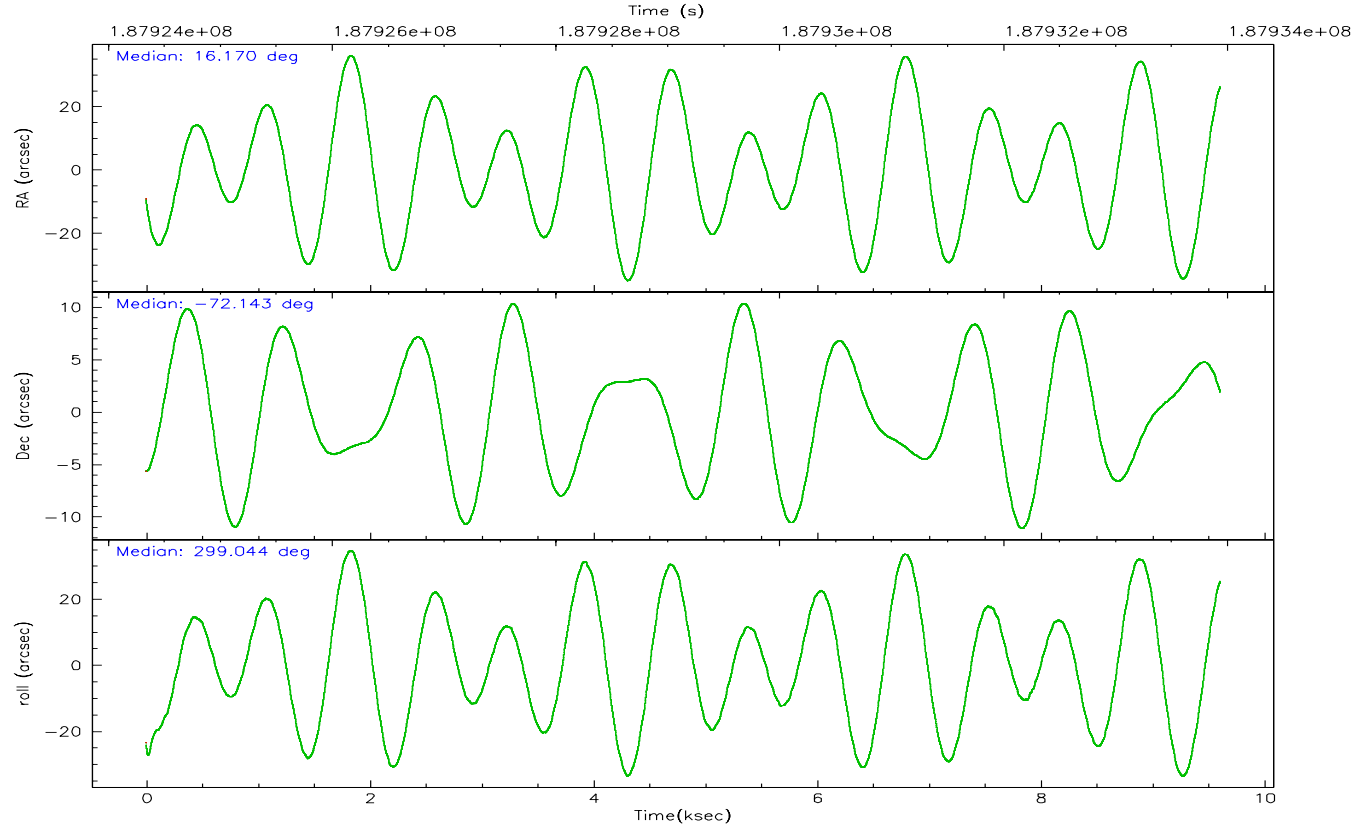
	ccd 0	ccd 1	ccd 2	ccd 3	ccd 6	ccd 7
grade 0 events	1500	1975	1993	20902	1481	1198
	4%	5%	5%	35%	3%	3%
grade 1 events	13	20	26	156	17	34
	0%	0%	0%	0%	0%	0%
grade 2 events	904	934	900	2466	865	4076
	2%	2%	2%	4%	2%	11%
grade 3 events	441	476	385	850	437	1090
	1%	1%	0%	1%	1%	3%
grade 4 events	400	453	444	906	390	942
	1%	1%	1%	1%	1%	2%
grade 5 events	1128	1227	1056	1368	1381	2921
	3%	3%	2%	2%	3%	8%
grade 6 events	671	818	658	835	803	8993
	1%	2%	1%	1%	2%	24%
grade 7 events	29202	29315	33304	31520	33284	16861
	85%	83%	85%	53%	86%	46%

2.2 Compared Parameters

Parameter	Planned	Actual	Parameter	Planned	Actual
Instrument	ACIS	ACIS	Obspar format version number	6	6
Detector	ACIS-012367	ACIS-012367	Obspar file type	PREDICTED	ACTUAL
Grating	NONE	NONE	Obspar update status	NONE	UPDATED
Data mode	VFAINT	VFAINT	On-chip summing requested	N	N
Observation mode	POINTING	POINTING	Subarray requested	NONE	NONE
Pointing RA	16.093667	16.1702205439296	Alternating exposures requested	N	N
Pointing Dec	-72.128931	-72.14285325804363	Primary exposure time	0.000000	3.2
Pointing Roll	298.770911	299.0524298740919			
Window start time	181353664.184000	181353664.184000			
Window stop time	189216064.184000	189216064.184000			
SIM focus pos (mm)	-0.782348	-0.7809083437167272			
SIM defocus (mm)	0	0.001439871863259334			
SIM translation stage pos (mm)	-233.592463	-233.5874344608287			
SIM translation stage offset (mm)	0	-0.005018542100998502			
Observation start time	187925688.184000	187924142.58803			
Observation start date	2003-12-16T01:33:44	2003-12-16T01:09:02			
Observation end time	187933938.184000	187935697.41353			
Observation end date	2003-12-16T03:51:14	2003-12-16T04:21:37			
Read mode	TIMED	TIMED			

2.3 Aspect



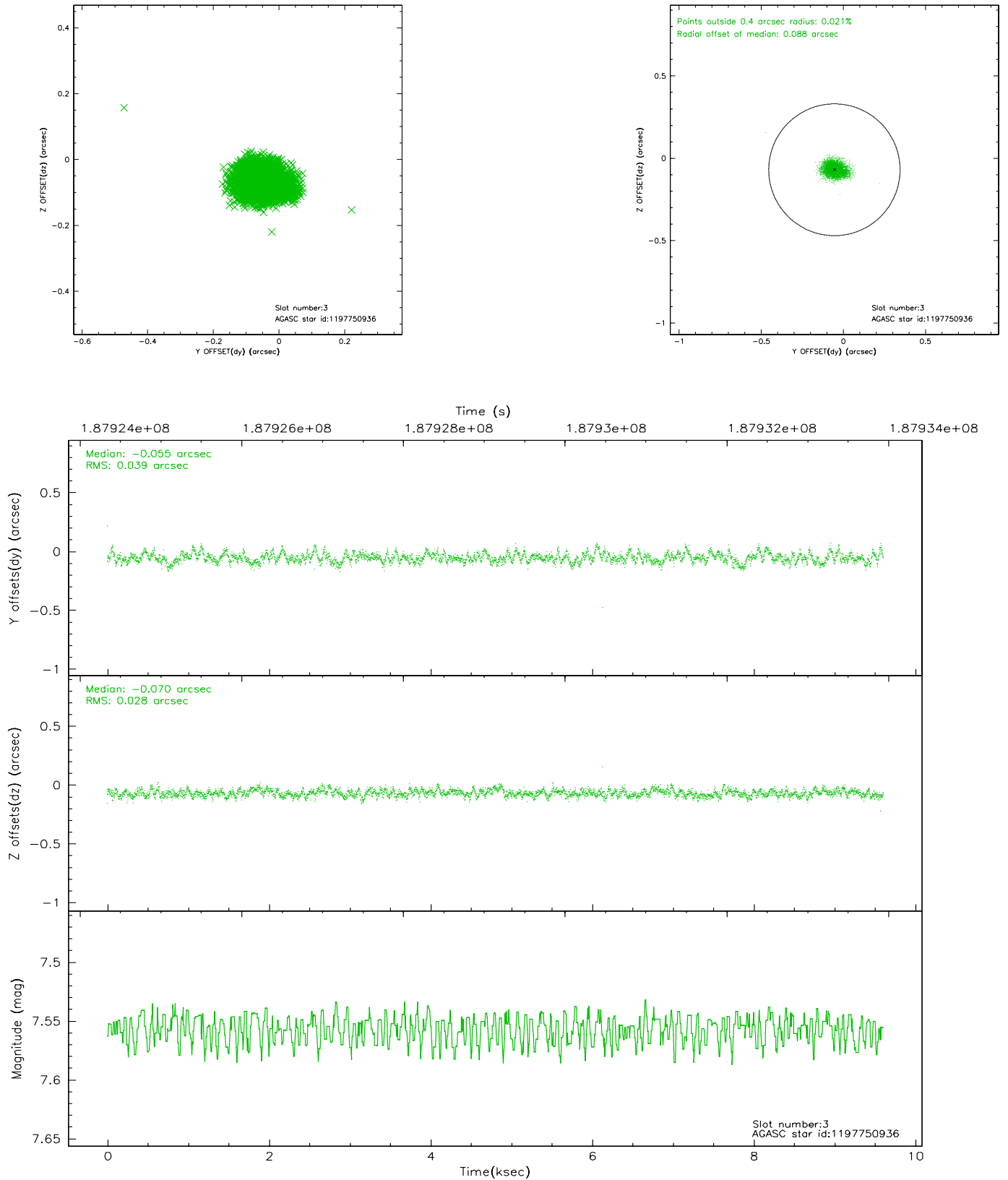


Slot Statistics

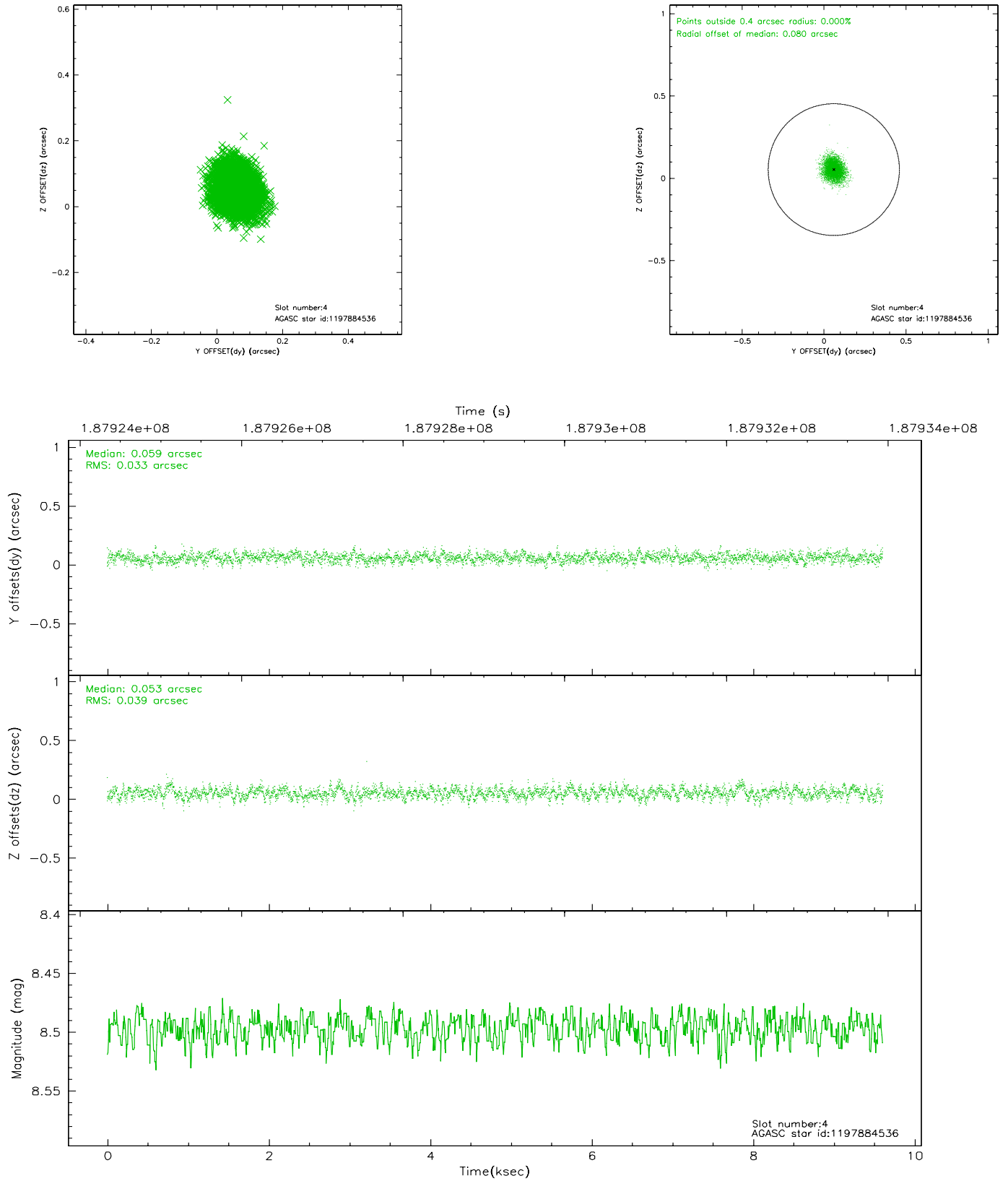
slot	status	id	mag	n_pts	med_dy	med_dz	dr1	dr2	ra	dec	mean_y	mean_z
0	FID	ACIS-I-1	7.23	2344	-0.018	0.039	0.007	0.011	0.000000	0.000000	932.81	-833.89
1	FID	ACIS-I-5	7.23	2344	-0.095	0.024	0.006	0.010	0.000000	0.000000	-1815.05	1063.33
2	FID	ACIS-I-6	7.25	2344	0.022	0.006	0.007	0.012	0.000000	0.000000	397.81	1708.43
3	GUIDE	1197750936	7.56	4688	-0.055	-0.070	0.051	0.084	15.387940	-71.549550	-2210.56	296.60
4	GUIDE	1197884536	8.50	4688	0.059	0.053	0.055	0.089	17.160729	-71.835289	-341.05	1553.60
5	GUIDE	1197884712	8.30	4688	0.096	0.078	0.053	0.087	16.087398	-72.252690	387.83	-219.84
6	GUIDE	1197885328	7.23	4688	-0.006	-0.062	0.053	0.084	16.283090	-71.733943	-1142.74	871.95
7	GUIDE	1198189696	7.38	4687	-0.097	-0.001	0.058	0.086	15.223750	-72.697522	1352.39	-1804.32

2.4 Star Slots

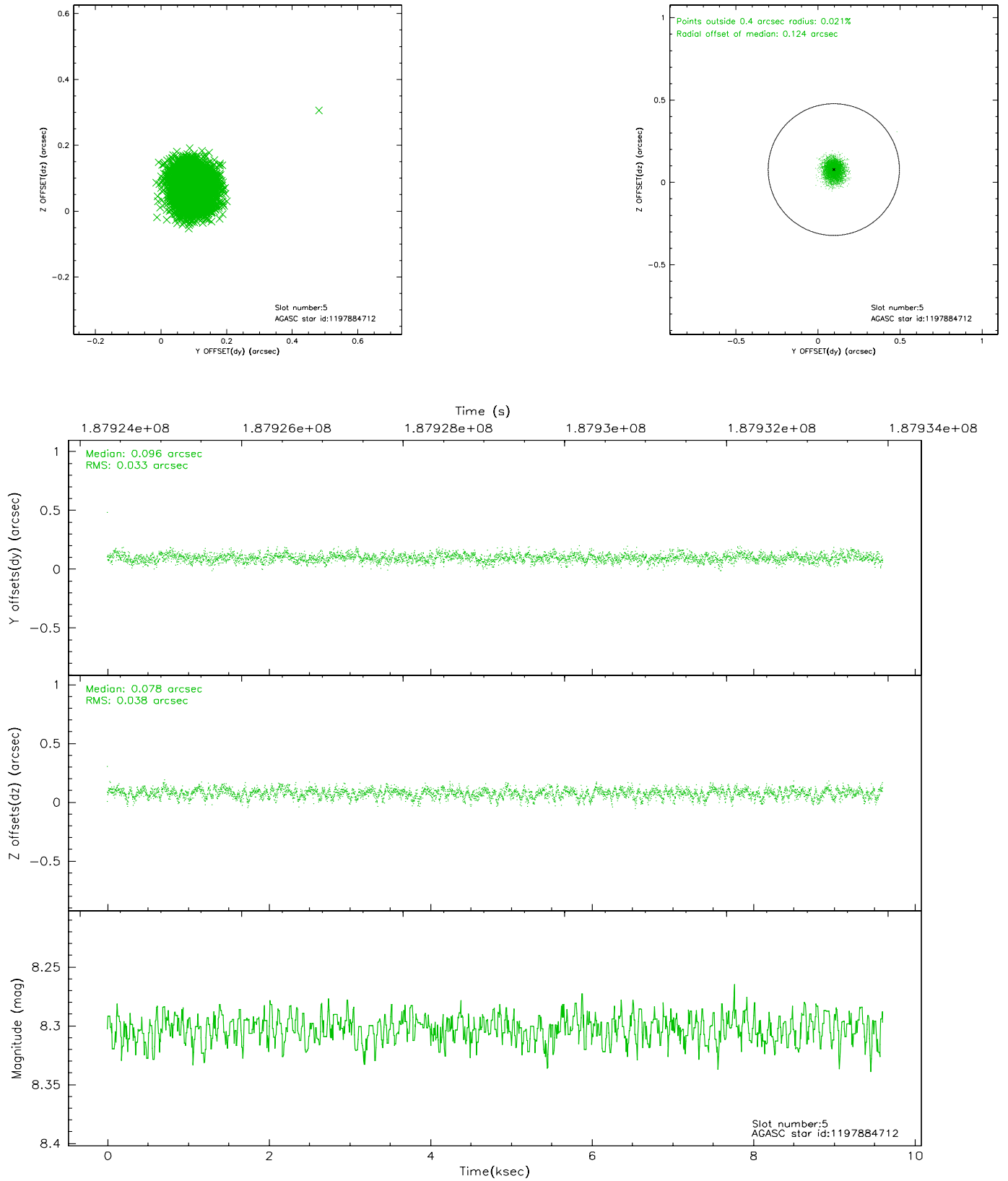
2.4.1 Slot 3



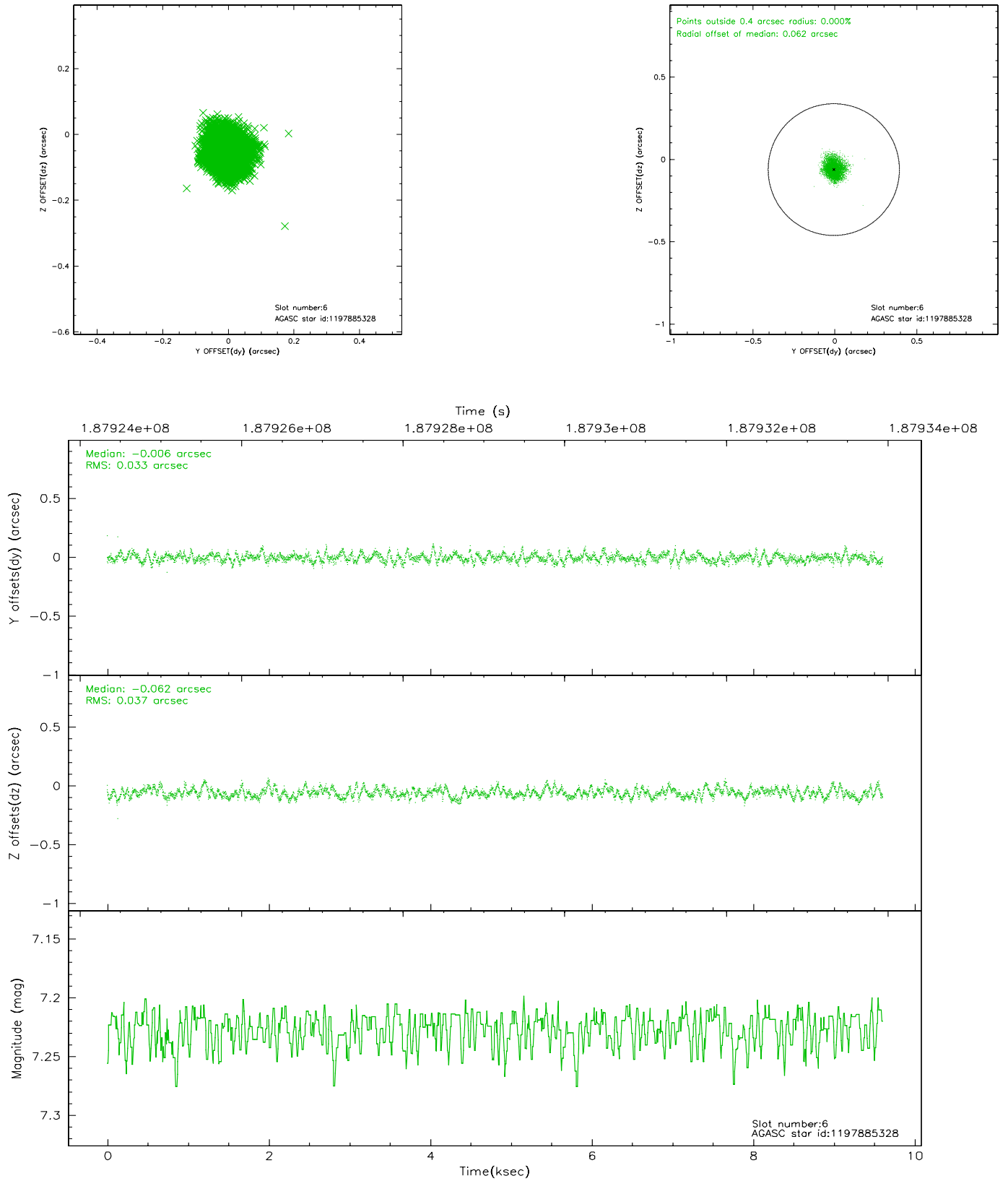
2.4.2 Slot 4



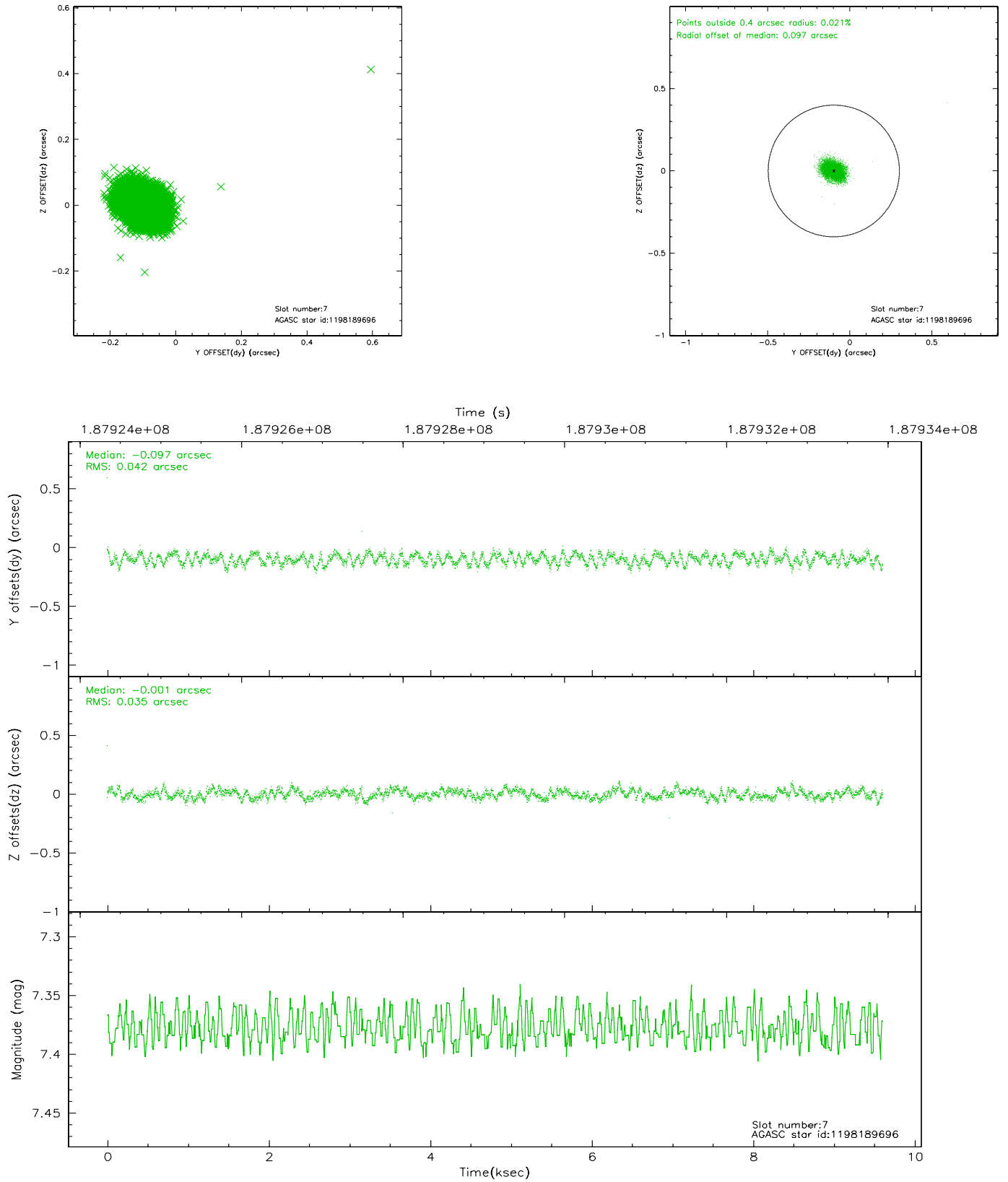
2.4.3 Slot 5



2.4.4 Slot 6

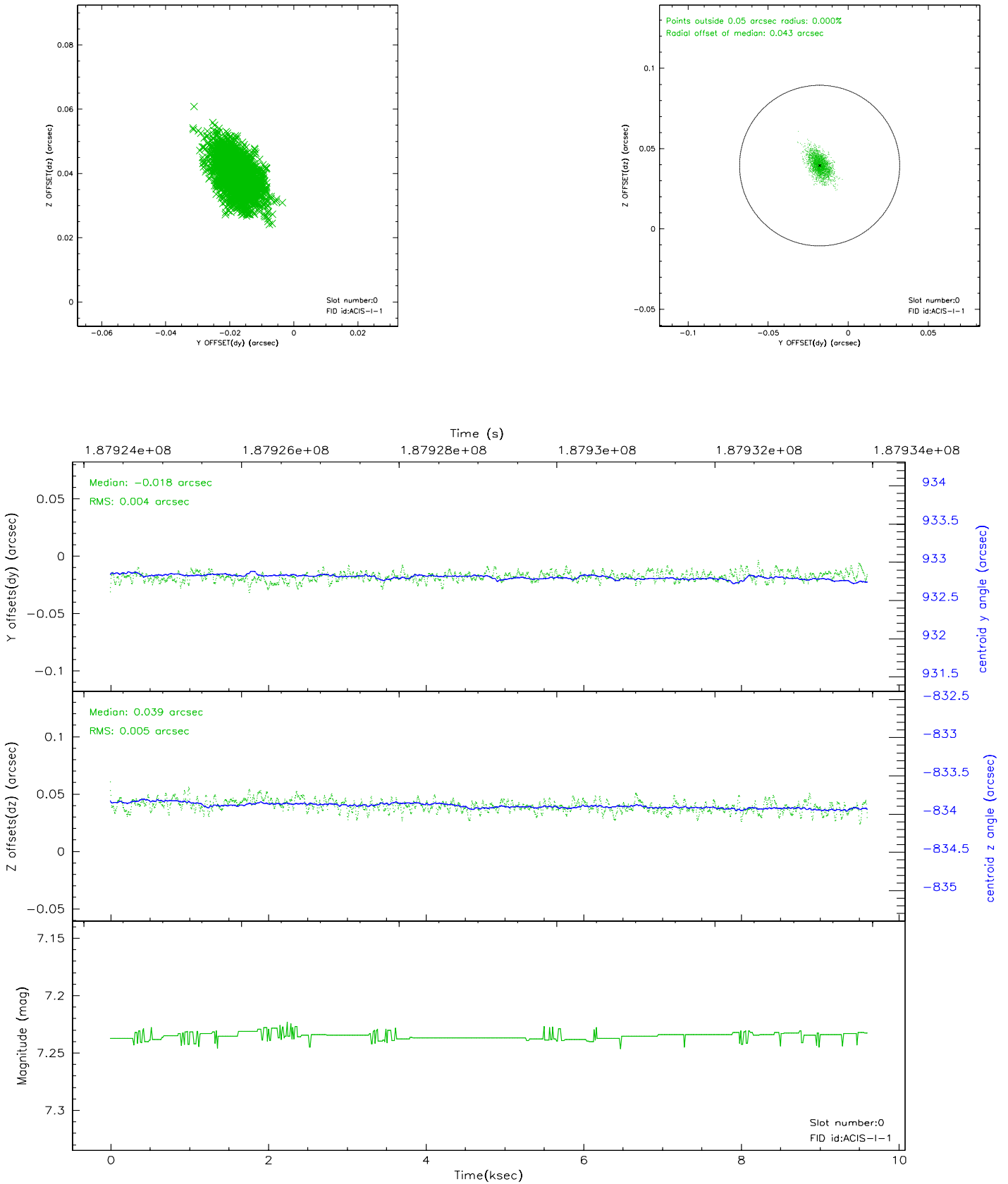


2.4.5 Slot 7

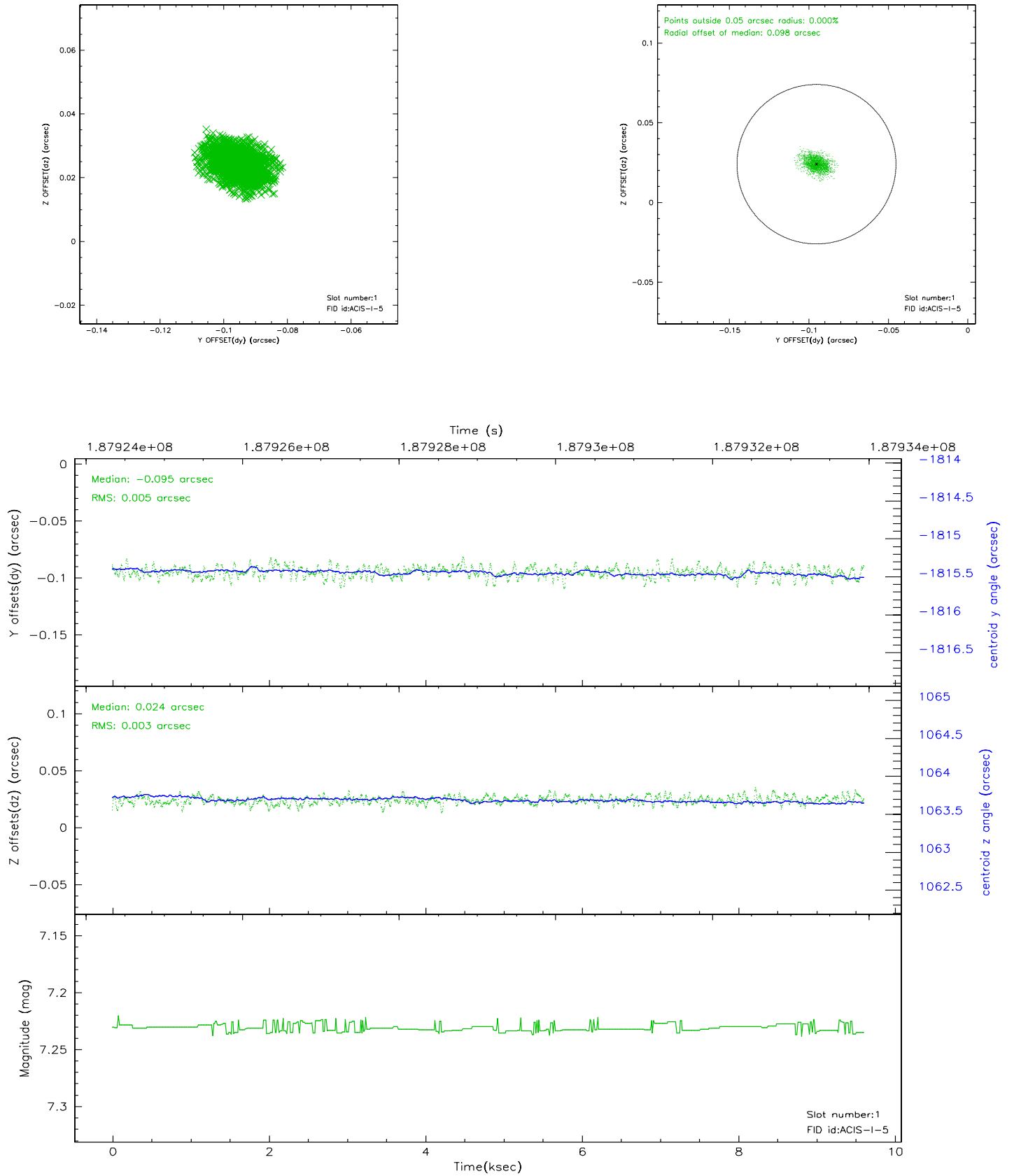


2.5 FID Slots

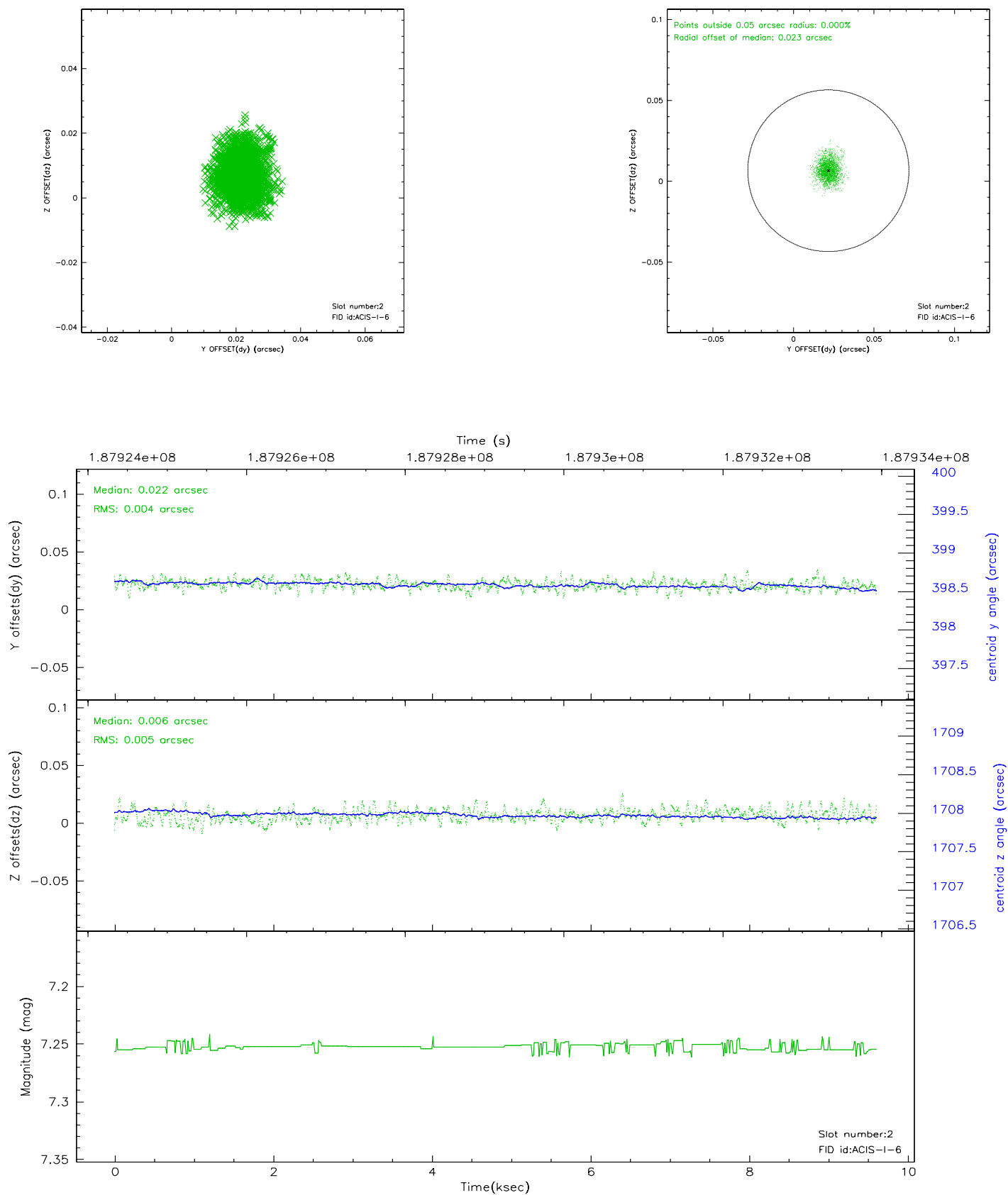
2.5.1 Slot 0



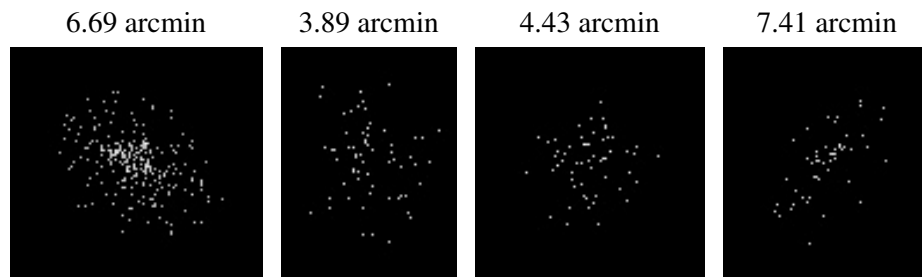
2.5.2 Slot 1



2.5.3 Slot 2



3 Point Sources



A Summary

A.1 Status

V&V Scientist	Jen Lauer
V&V Date (YYYY-MM-DD)	2006.06.26
V&V Edition	1
V&V Disposition and Status	OK
V&V Charge Time	8.217

A.2 Comments

Window constraint met. Source is near the edge of chip.