

# V&V Reference Report

## L2 ASCDS Version : 10.4.3.1

Observation 51256 - L2 Version 1  
Chandra X-Ray Center

L2 Processing Date : Feb 15 2016

## Contents

<b>1</b>	<b>Front</b>	<b>2</b>
<b>2</b>	<b>OBI</b>	<b>3</b>
2.1	OBI . . . . .	3
2.1.1	Images . . . . .	3
2.1.2	Bias . . . . .	3
2.1.3	Parameters . . . . .	4
2.1.4	Events . . . . .	4
2.2	Compared Parameters . . . . .	5
2.3	Star Slots . . . . .	6
2.4	FID Slots . . . . .	6
<b>A</b>	<b>Summary</b>	<b>7</b>
A.1	Status . . . . .	7
A.2	Comments . . . . .	7

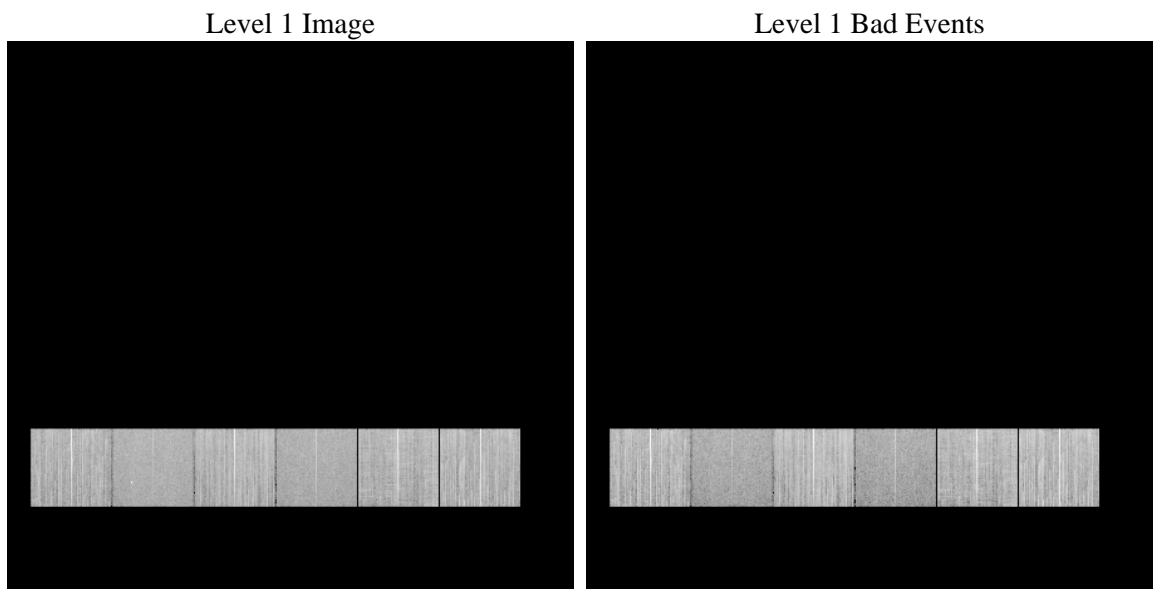
# 1 Front

seq_num	&#160	Sequence number
obs_id	51256	Observation id
title	ACIS-456789 diagnostics	Proposal title
observer	CHANDRA engineering request/realtime commanding	Principal investig
object	&#160	Source name
dtcycle	0	&#160
cycle	P	events from which exps? Prim/Second/Both
ra_targ	0.0	Observer's specified target RA [deg]
dec_targ	0.0	Observer's specified target Dec [deg]
ra_nom	147.02547052209	Nominal RA [deg]
dec_nom	-11.485489397833	Nominal Dec [deg]
roll_nom	357.44263640484	Nominal Roll [deg]
revision	1	Processing version of data
ontime	8452.6382702589	Sum of GTIs [s]
livetime	8345.6058749132	Livetime [s]
ontime4	8453.9181954861	Sum of GTIs [s]
ontime5	8452.6382702589	Sum of GTIs [s]
ontime6	8453.959235549	Sum of GTIs [s]
ontime7	8452.6382702589	Sum of GTIs [s]
ontime8	8453.8771555424	Sum of GTIs [s]
ontime9	8452.6382397413	Sum of GTIs [s]
l2events	185528	Number of level 2 events

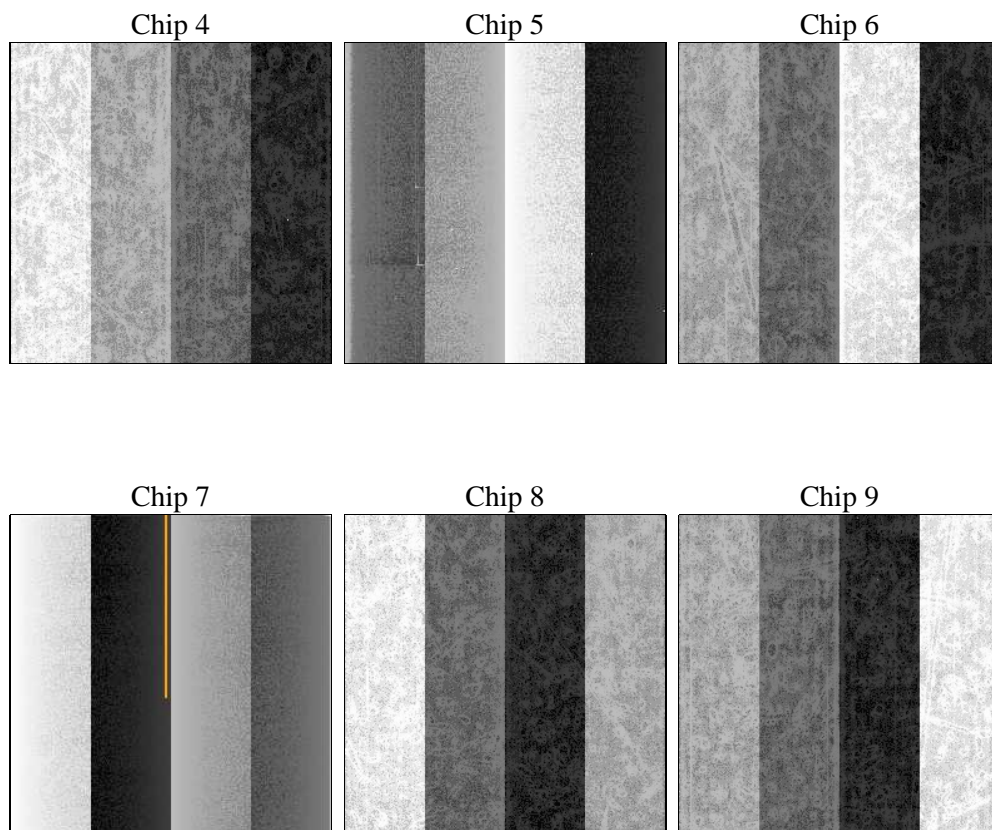
## 2 OBI

### 2.1 OBI

#### 2.1.1 Images



#### 2.1.2 Bias



### 2.1.3 Parameters

obi_num	0	Obi number	sched_exp_time	0.0	[s] Scheduled observation exposure time
ascdsver	10.4.3.1	Processing system revision	ontime	8452.6382702589	Sum of GTIs [s]
caldbver	4.7.0	&#160	ontime4	8453.9181954861	Sum of GTIs [s]
date	2016-02-15T19:17:16	Date and time of file creation	ontime5	8452.6382702589	Sum of GTIs [s]
revision	1	Processing version of data	ontime6	8453.959235549	Sum of GTIs [s]
			ontime7	8452.6382702589	Sum of GTIs [s]
			ontime8	8453.8771555424	Sum of GTIs [s]
			ontime9	8452.6382397413	Sum of GTIs [s]
			l1events	989270	Number of level 1 events

### 2.1.4 Events

	ccd 4	ccd 5	ccd 6	ccd 7	ccd 8	ccd 9		ccd 4	ccd 5	ccd 6	ccd 7	ccd 8	ccd 9
level 1 events	168101	143242	182371	131972	175248	188336	grade 0 events	10787	3854	9661	5473	13180	9783
rejected events	146587	85178	160479	80254	141554	166967		6%	2%	5%	4%	7%	5%
rejected %	87%	59%	87%	60%	80%	88%	grade 1 events	107	192	56	85	72	67
								0%	0%	0%	0%	0%	0%
							grade 2 events	4511	20871	5206	12868	7758	4692
								2%	14%	2%	9%	4%	2%
							grade 3 events	1581	1660	1484	3716	2830	1542
								0%	1%	0%	2%	1%	0%
							grade 4 events	1548	1652	1402	3670	2673	1517
								0%	1%	0%	2%	1%	0%
							grade 5 events	3606	6478	3343	8132	4730	3958
								2%	4%	1%	6%	2%	2%
							grade 6 events	3095	30027	4149	25991	7260	3835
								1%	20%	2%	19%	4%	2%
							grade 7 events	142866	78508	157070	72037	136745	162942
								84%	54%	86%	54%	78%	86%

## 2.2 Compared Parameters

Parameter	Planned	Actual	Parameter	Planned	Actual
Instrument	ACIS	ACIS	Obspar format version number	7	7
Detector	ACIS-456789	ACIS-456789	Obspar file type	PREDICTED	ACTUAL
Grating	NONE	NONE	Obspar update status	NONE	UPDATED
Data mode	FAINT	FAINT	Number of optional ACIS chips dropped	0	0
Observation mode	SECONDARY	SECONDARY	On-chip summing requested	N	N
[deg] Pointing RA	0	147.0254705220913	Subarray requested	NONE	NONE
[deg] Pointing Dec	0	-11.48548939783308	Alternating exposures requested	N	N
[deg] Pointing Roll	0.0	357.4426364048379	[s] Primary exposure time	3.2	3.2
[mm] SIM focus pos	-1.429586	-1.428180813131781			
[mm] SIM defocus	0.1037507710433287	0.1051558262725154			
[mm] SIM translation stage pos	250.455976	250.466033080201			
[mm] SIM translation stage offset	0	-0.01005468664627074			
[s] Observation start time (MET)	571914417.975026	571914416.95003			
Observation start date	2016-02-15T09:06:58	2016-02-15T09:06:56			
[s] Observation end time (MET)	571924598.275604	571924597.2506			
Observation end date	2016-02-15T11:56:38	2016-02-15T11:56:37			
Read mode	TIMED	TIMED			

## 2.3 Star Slots

## 2.4 FID Slots

## A Summary

### A.1 Status

V&V Scientist	Beth Sundheim
V&V Date (YYYY-MM-DD)	2016.02.15
V&V Edition	1
V&V Disposition and Status	OK
V&V Charge Time	8.4526382702589

### A.2 Comments