

# V&V Reference Report

## L2 ASCDS Version : 7.6.7.1

Observation 5026 - L2 Version 001  
Chandra X-Ray Center

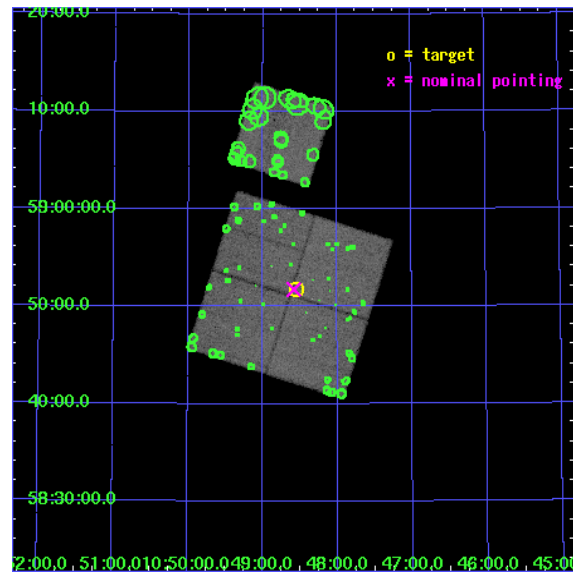
L2 Processing Date : Apr 17 2006

## Contents

<b>1</b>	<b>Front</b>	<b>2</b>
<b>2</b>	<b>OBI</b>	<b>3</b>
2.1	OBI . . . . .	3
2.1.1	Images . . . . .	3
2.1.2	Bias . . . . .	3
2.1.3	Parameters . . . . .	4
2.1.4	Events . . . . .	4
2.2	Compared Parameters . . . . .	5
2.3	Aspect . . . . .	6
2.4	Star Slots . . . . .	9
2.4.1	Slot 3 . . . . .	9
2.4.2	Slot 4 . . . . .	10
2.4.3	Slot 5 . . . . .	11
2.4.4	Slot 6 . . . . .	12
2.4.5	Slot 7 . . . . .	13
2.5	FID Slots . . . . .	14
2.5.1	Slot 0 . . . . .	14
2.5.2	Slot 1 . . . . .	15
2.5.3	Slot 2 . . . . .	16
<b>3</b>	<b>Point Sources</b>	<b>17</b>
<b>A</b>	<b>Summary</b>	<b>18</b>
A.1	Status . . . . .	18
A.2	Comments . . . . .	18

# 1 Front

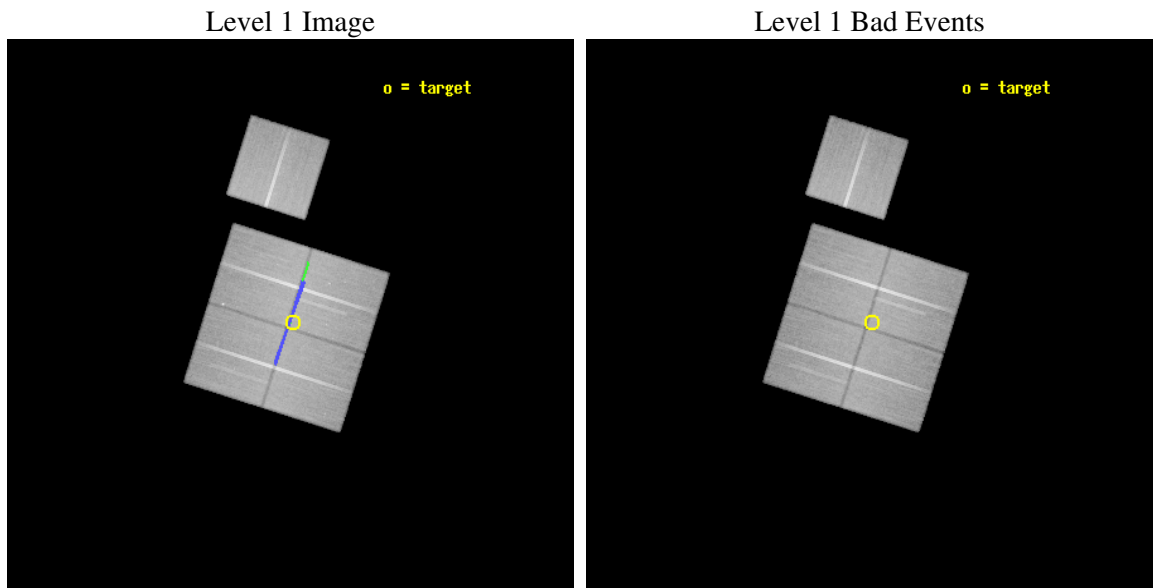
seq_num	900333
obs_id	5026
title	The Balance of Power between Starbursts and AGN: a Chandra/SIRTf Survey.
observer	Dr. BELINDA WILKES
object	SWIRE LOCKMAN 3
dtcycle	0
cycle	P
ra_targ	162.136525
dec_targ	58.863146
ra_nom	162.14544086861
dec_nom	58.862710470033
roll_nom	17.601052241296
revision	2
ontime	69774.799865842
livetime	68863.140738134
ontime0	69771.658895582
ontime1	69771.658905566
ontime2	69765.376945198
ontime3	69774.799865842
ontime6	69765.376985073
l2events	253777



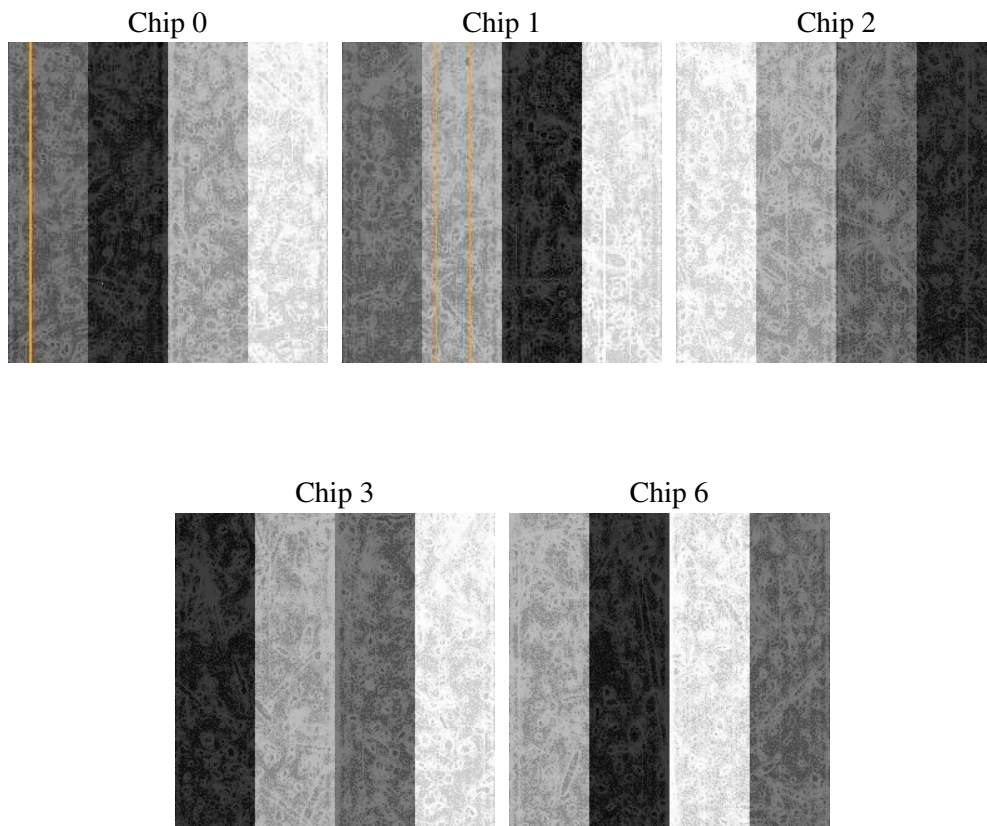
## 2 OBI

### 2.1 OBI

#### 2.1.1 Images



#### 2.1.2 Bias



### 2.1.3 Parameters

obi_num	1
ascdsver	7.6.7.1
caldbver	3.2.1
date	2006-04-17T18:13:15
revision	2

sched_exp_time	70000.000000
ontime	69777.355707198
ontime0	69774.214736938
ontime1	69774.214746922
ontime2	69767.932786554
ontime3	69777.355707198
ontime6	69767.932846338
l1events	2364601

### 2.1.4 Events

	ccd 0	ccd 1	ccd 2	ccd 3	ccd 6
level 1 events	448710	458420	485557	485405	486509
rejected events	390062	397299	426561	427991	429004
rejected %	86%	86%	87%	88%	88%

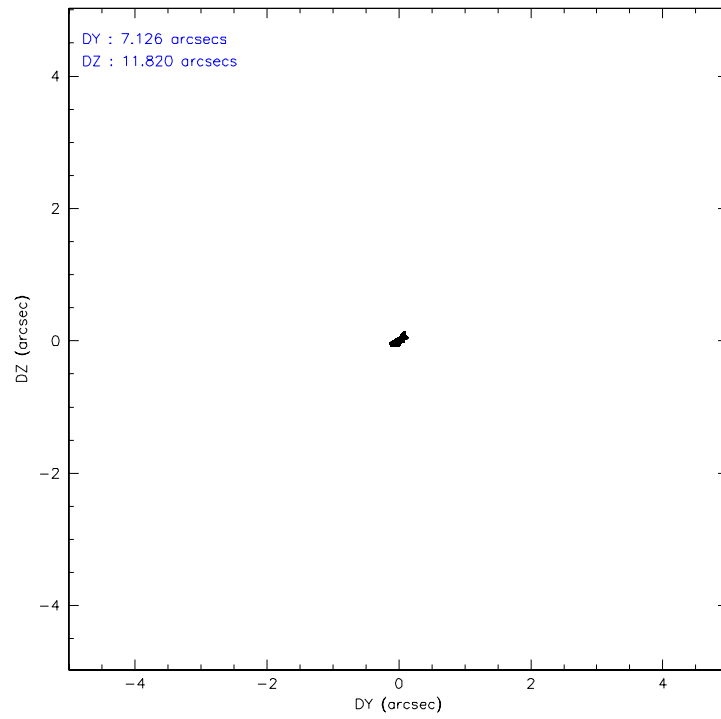
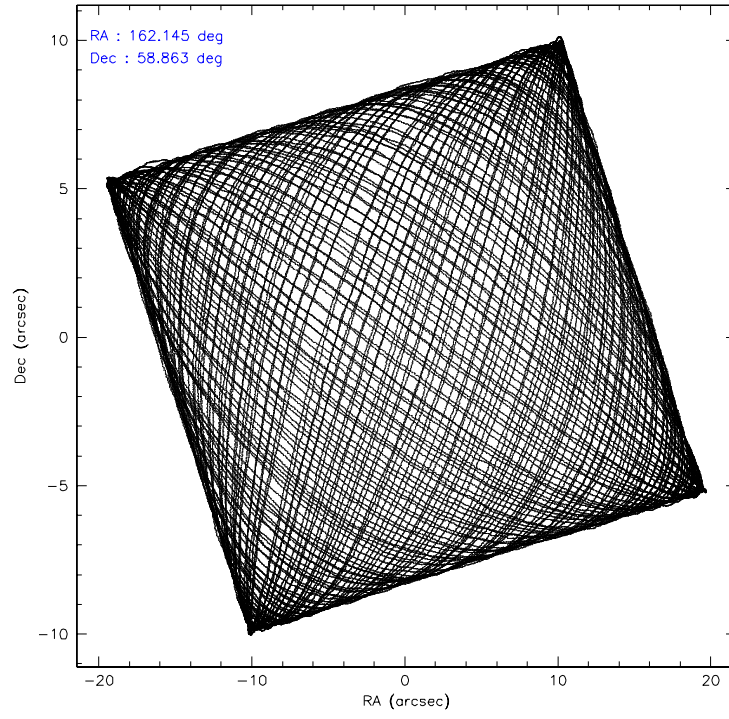
	ccd 0	ccd 1	ccd 2	ccd 3	ccd 6
grade 0 events	24371	23551	26644	25202	22597
	5%	5%	5%	5%	4%
grade 1 events	241	218	278	286	216
	0%	0%	0%	0%	0%
grade 2 events	12759	13376	12083	11099	11933
	2%	2%	2%	2%	2%
grade 3 events	5819	6169	5463	5561	5712
	1%	1%	1%	1%	1%
grade 4 events	5412	5992	5378	5551	5648
	1%	1%	1%	1%	1%
grade 5 events	19879	21120	19079	22136	21992
	4%	4%	3%	4%	4%
grade 6 events	10290	12034	9432	10002	11615
	2%	2%	1%	2%	2%
grade 7 events	369939	375960	407200	405568	406796
	82%	82%	83%	83%	83%

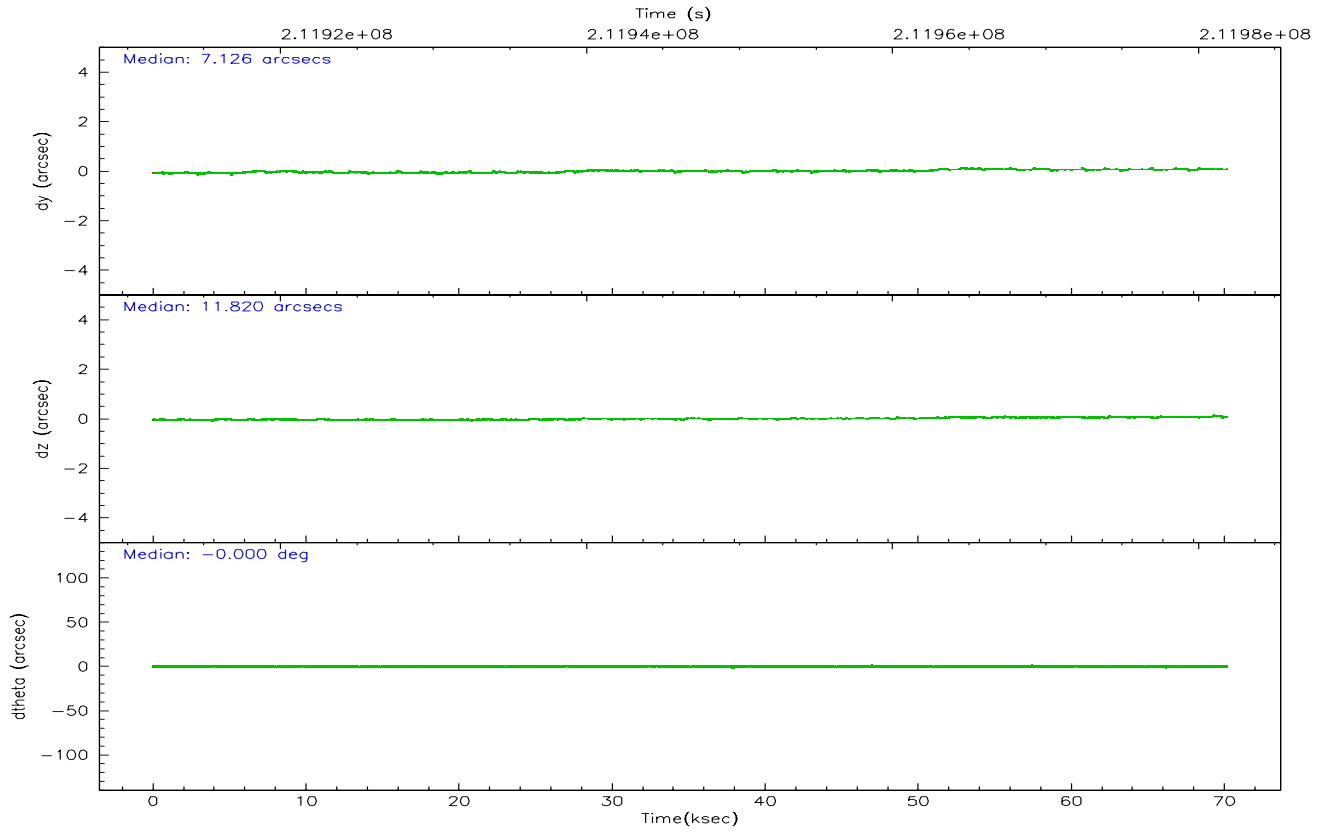
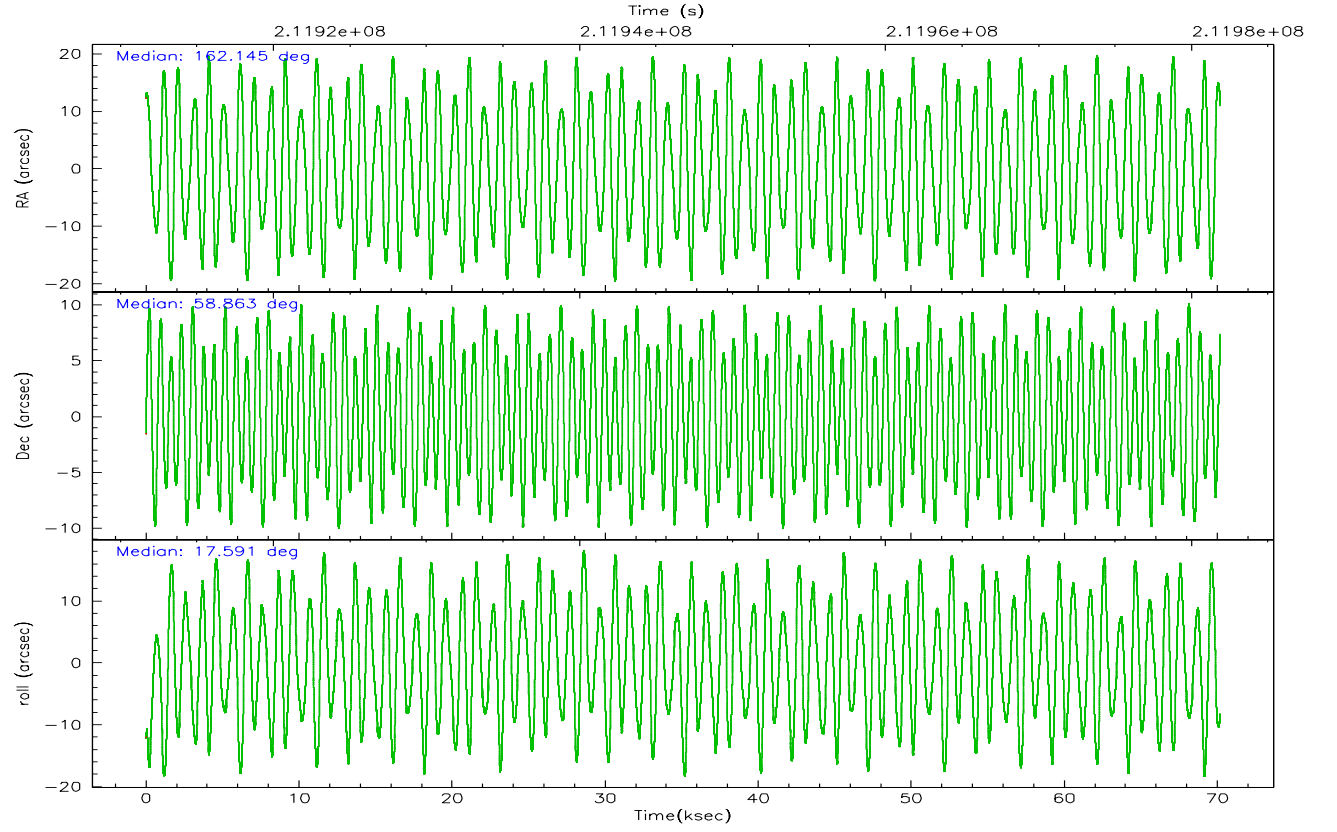


## 2.2 Compared Parameters

Parameter	Planned	Actual	Parameter	Planned	Actual
Instrument	ACIS	ACIS	Obspar format version number	6	6
Detector	ACIS-01236	ACIS-01236	Obspar file type	PREDICTED	ACTUAL
Grating	NONE	NONE	Obspar update status	NONE	UPDATED
Data mode	VFAINT	VFAINT	On-chip summing requested	N	N
Observation mode	POINTING	POINTING	Subarray requested	NONE	NONE
Pointing RA	162.109924	162.1454408686097	Alternating exposures requested	N	N
Pointing Dec	58.842414	58.86271047003309	Primary exposure time	0.000000	3.1
Pointing Roll	17.422769	17.60105224129603			
Roll angle	19.200000	19.200000			
Roll tolerance	1.800000	1.800000			
Roll constraint allows 180D rotation	Y	Y			
SIM focus pos (mm)	-0.782348	-0.7809083437167272			
SIM defocus (mm)	0	0.001439871863259334			
SIM translation stage pos (mm)	-233.592463	-233.5874344608287			
SIM translation stage offset (mm)	0	-0.005018542100998502			
Observation start time	211911872.184000	211911496.0202			
Observation start date	2004-09-18T16:23:28	2004-09-18T16:18:16			
Observation end time	211981872.184000	211982279.96086			
Observation end date	2004-09-19T11:50:08	2004-09-19T11:57:59			
Read mode	TIMED	TIMED			

## 2.3 Aspect



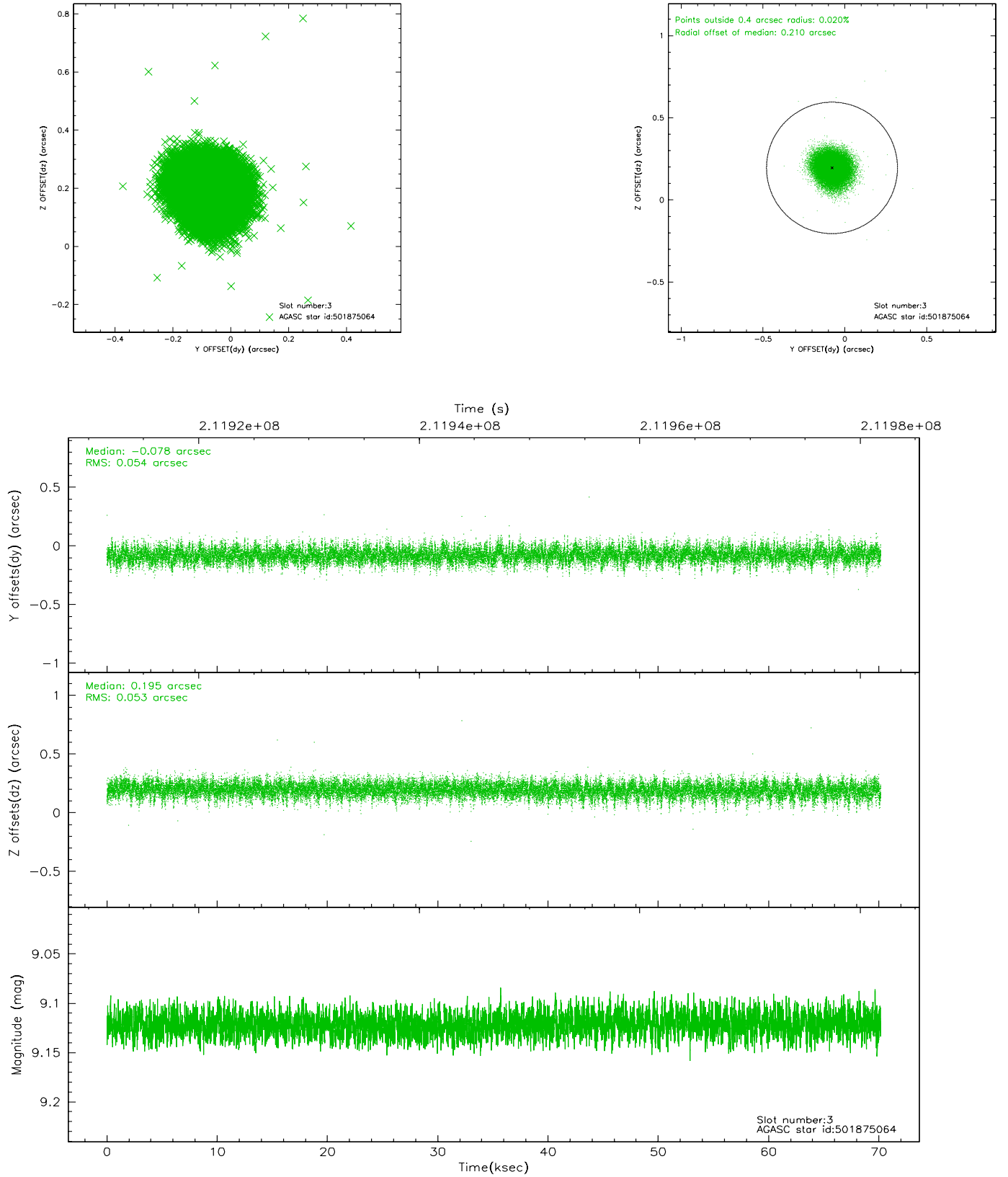


### Slot Statistics

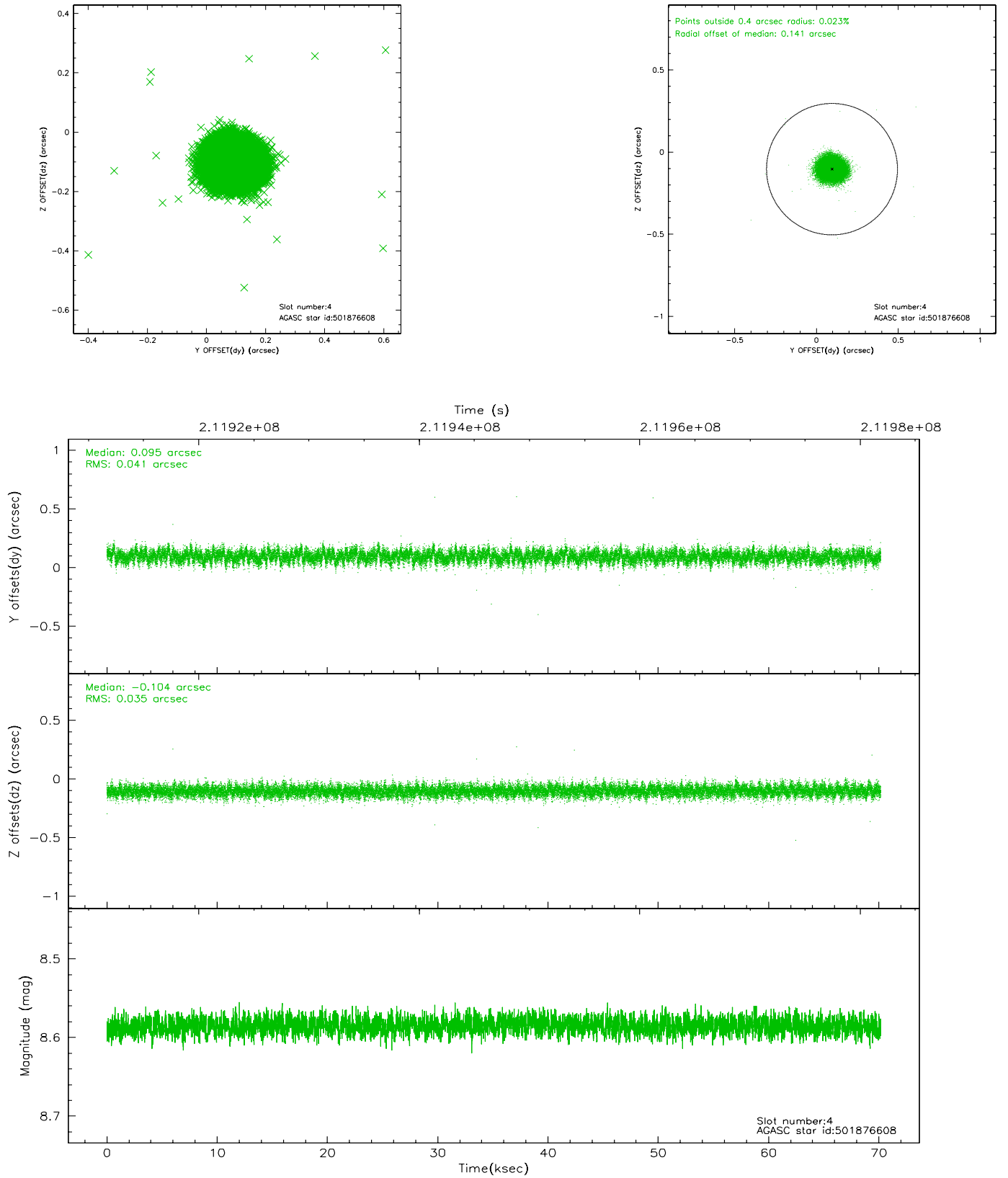
slot	status	id	mag	n_pts	med_dy	med_dz	dr1	dr2	ra	dec	mean_y	mean_z
0	FID	ACIS-I-1	7.24	17119	0.022	0.016	0.006	0.010	0.000000	0.000000	932.55	-835.36
1	FID	ACIS-I-5	7.23	17119	-0.128	0.054	0.006	0.010	0.000000	0.000000	-1815.69	1062.27
2	FID	ACIS-I-6	7.25	17120	0.015	0.001	0.007	0.011	0.000000	0.000000	398.22	1706.60
3	GUIDE	501875064	9.12	34228	-0.078	0.195	0.080	0.132	163.017696	58.369846	1128.64	-2125.01
4	GUIDE	501876608	8.59	34230	0.095	-0.104	0.057	0.092	161.204341	58.717464	-1746.16	88.21
5	GUIDE	501878216	8.99	34221	0.107	-0.042	0.068	0.113	161.663048	59.249982	-344.56	1648.85
6	GUIDE	501878576	7.82	34237	0.002	-0.015	0.054	0.087	161.532118	59.060873	-783.36	1075.01
7	GUIDE	501878640	8.44	34226	-0.127	-0.032	0.055	0.090	163.346309	59.049577	2413.80	46.90

## 2.4 Star Slots

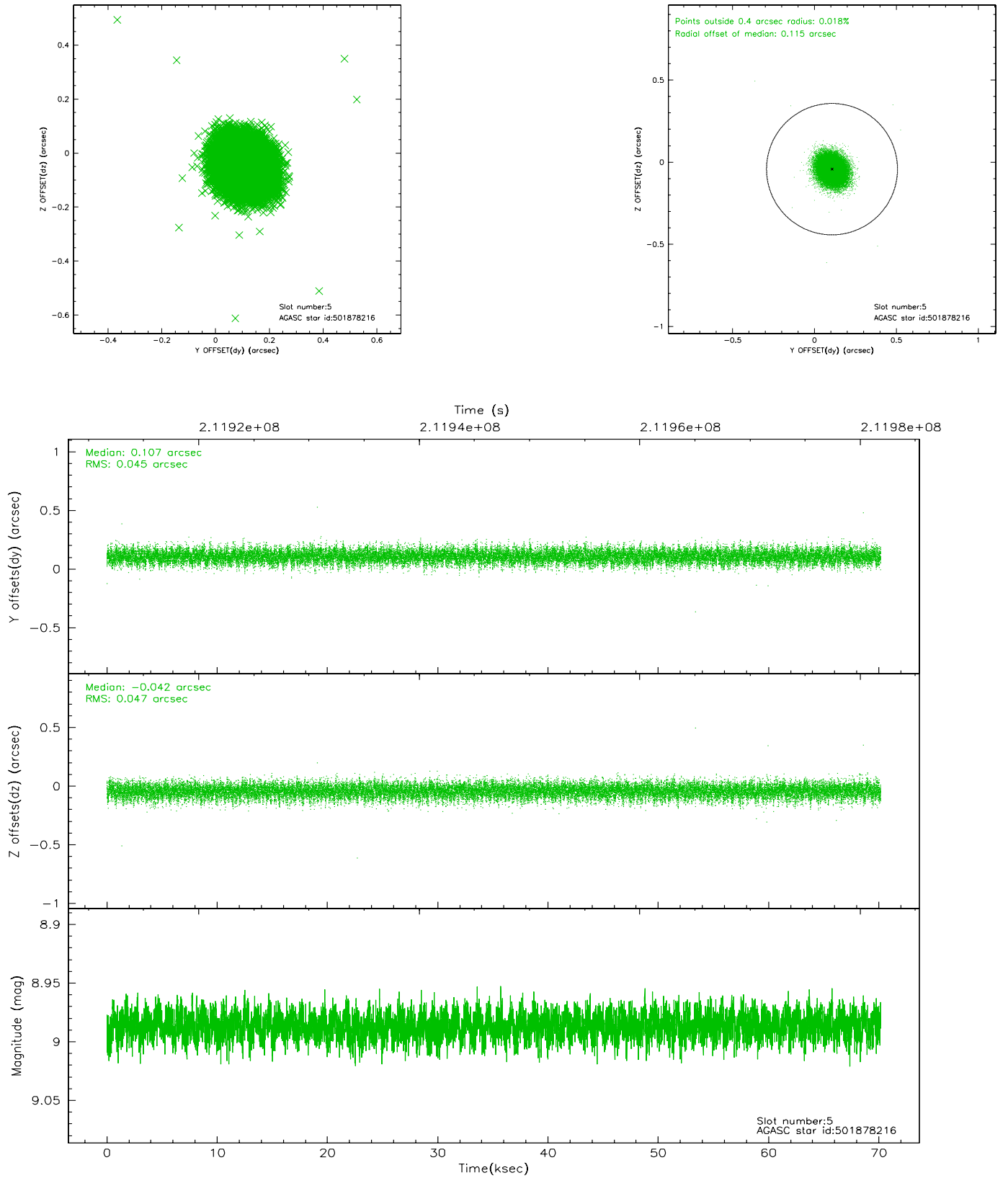
### 2.4.1 Slot 3



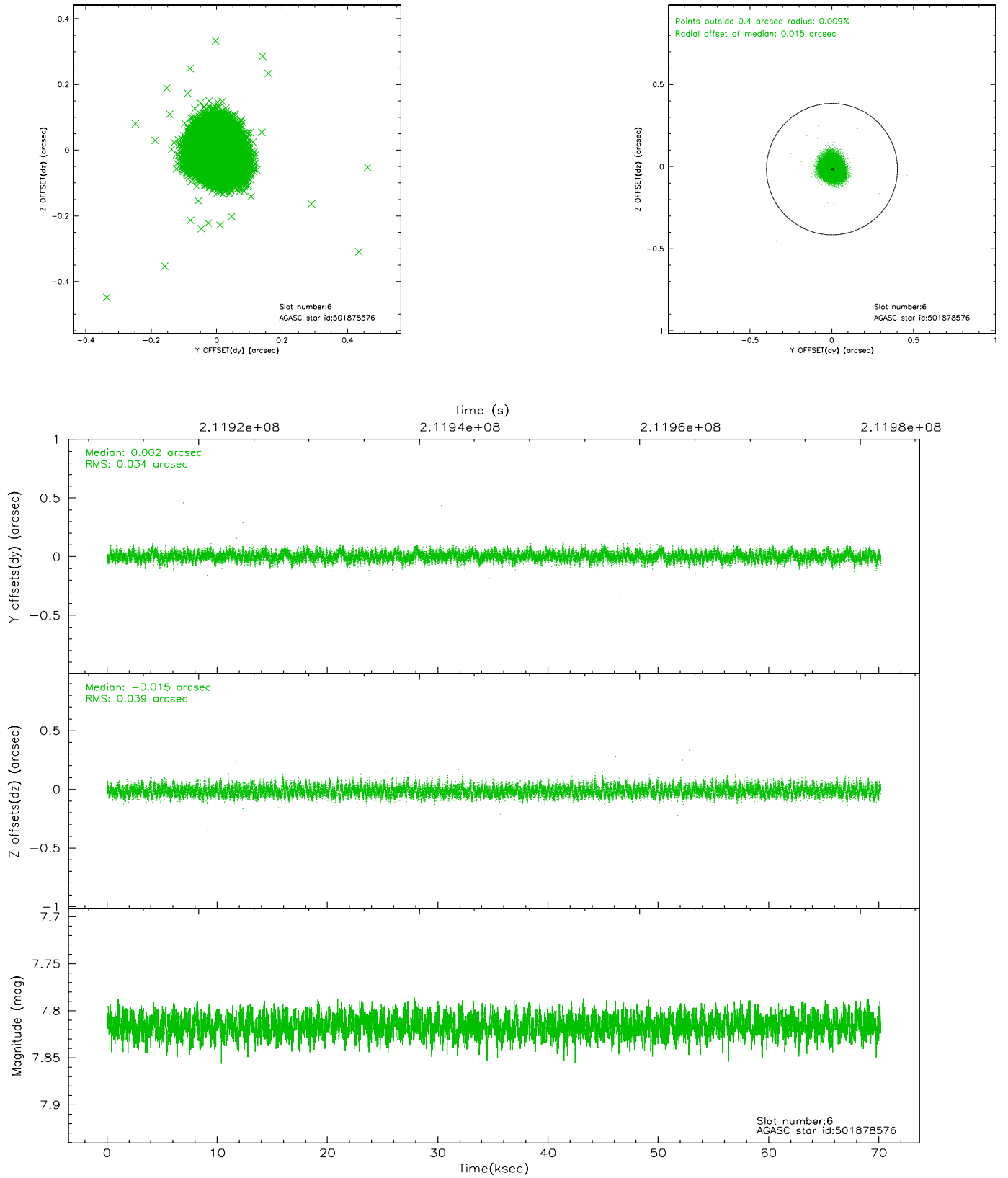
## 2.4.2 Slot 4



### 2.4.3 Slot 5

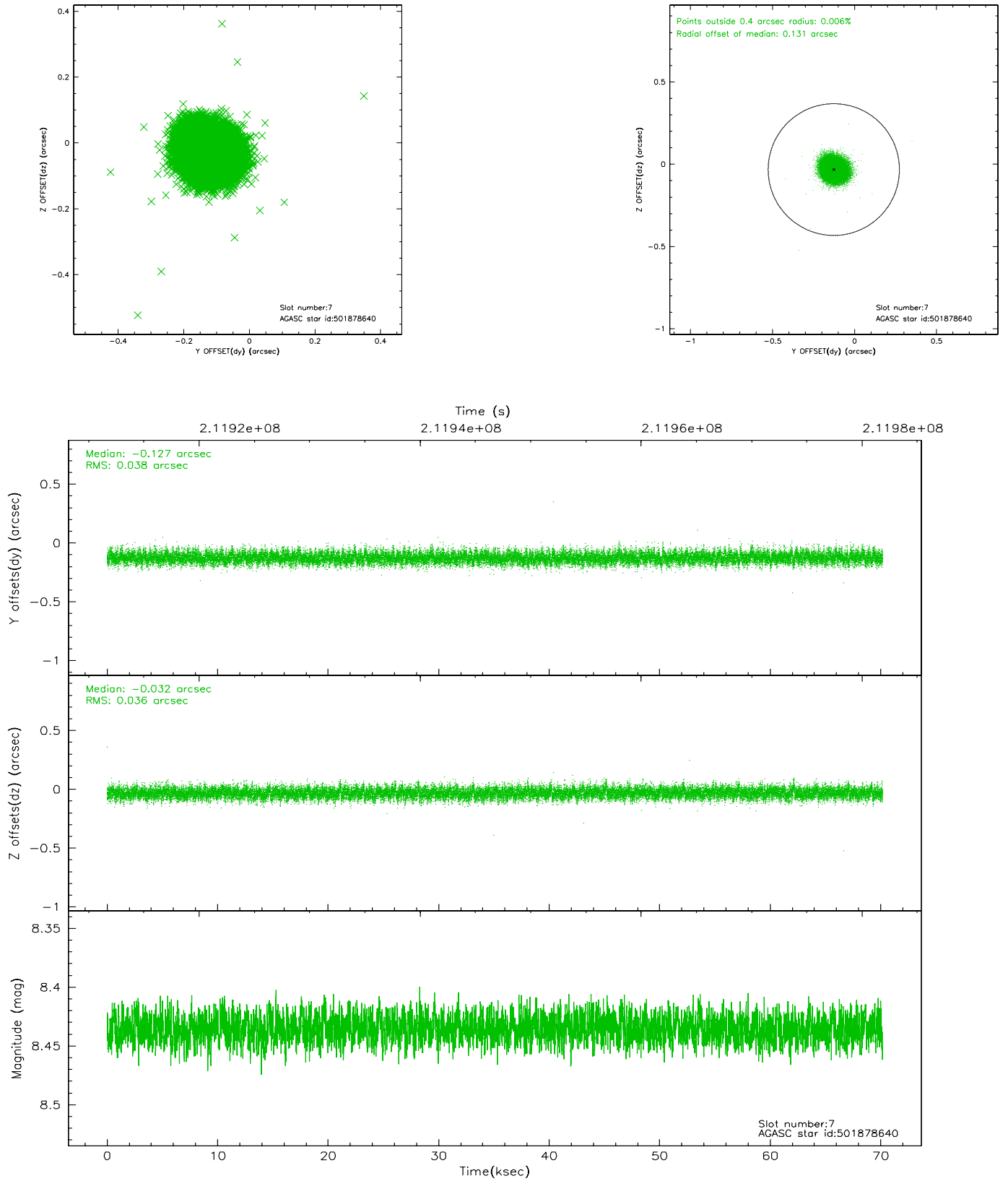


## 2.4.4 Slot 6



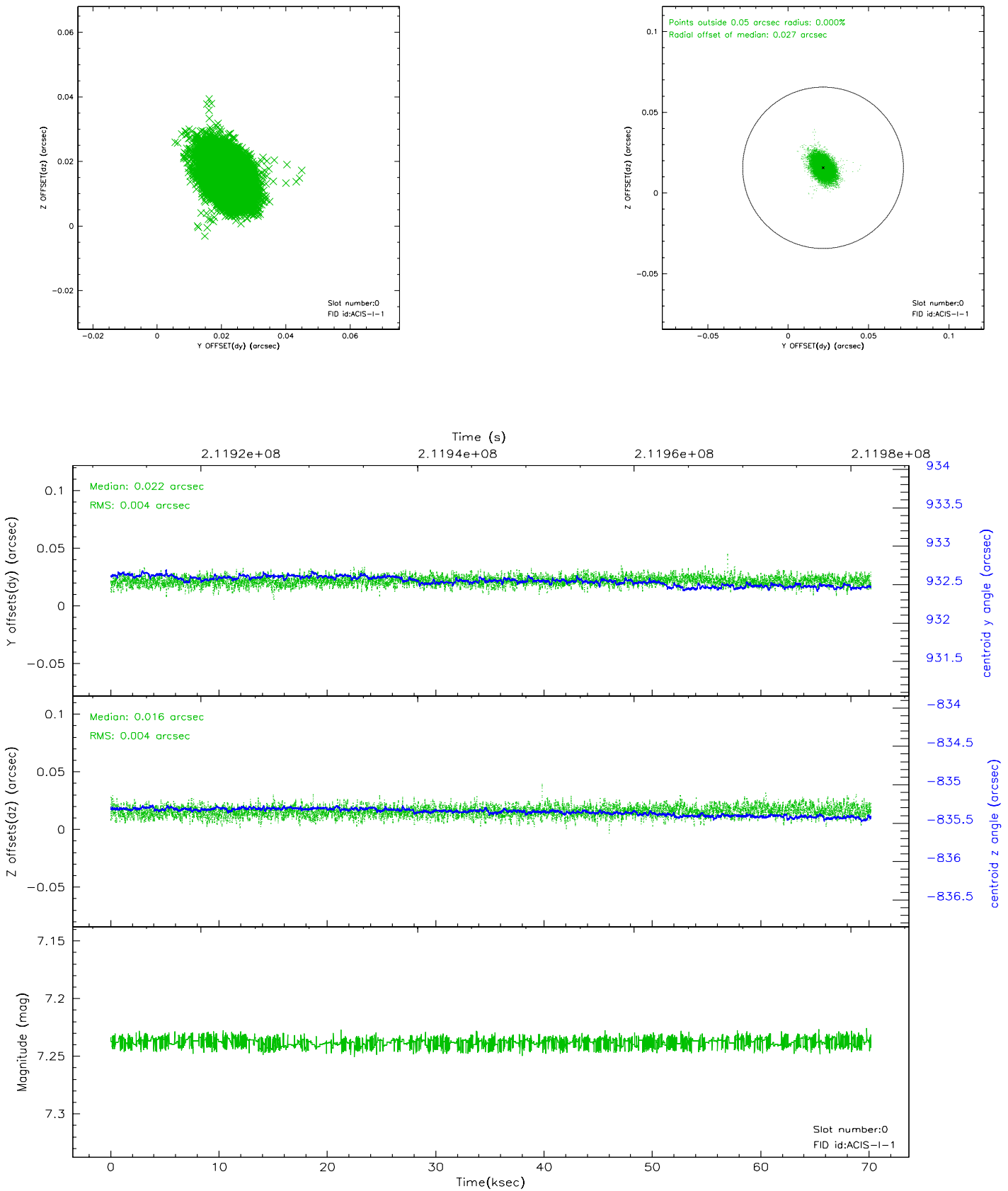


## 2.4.5 Slot 7

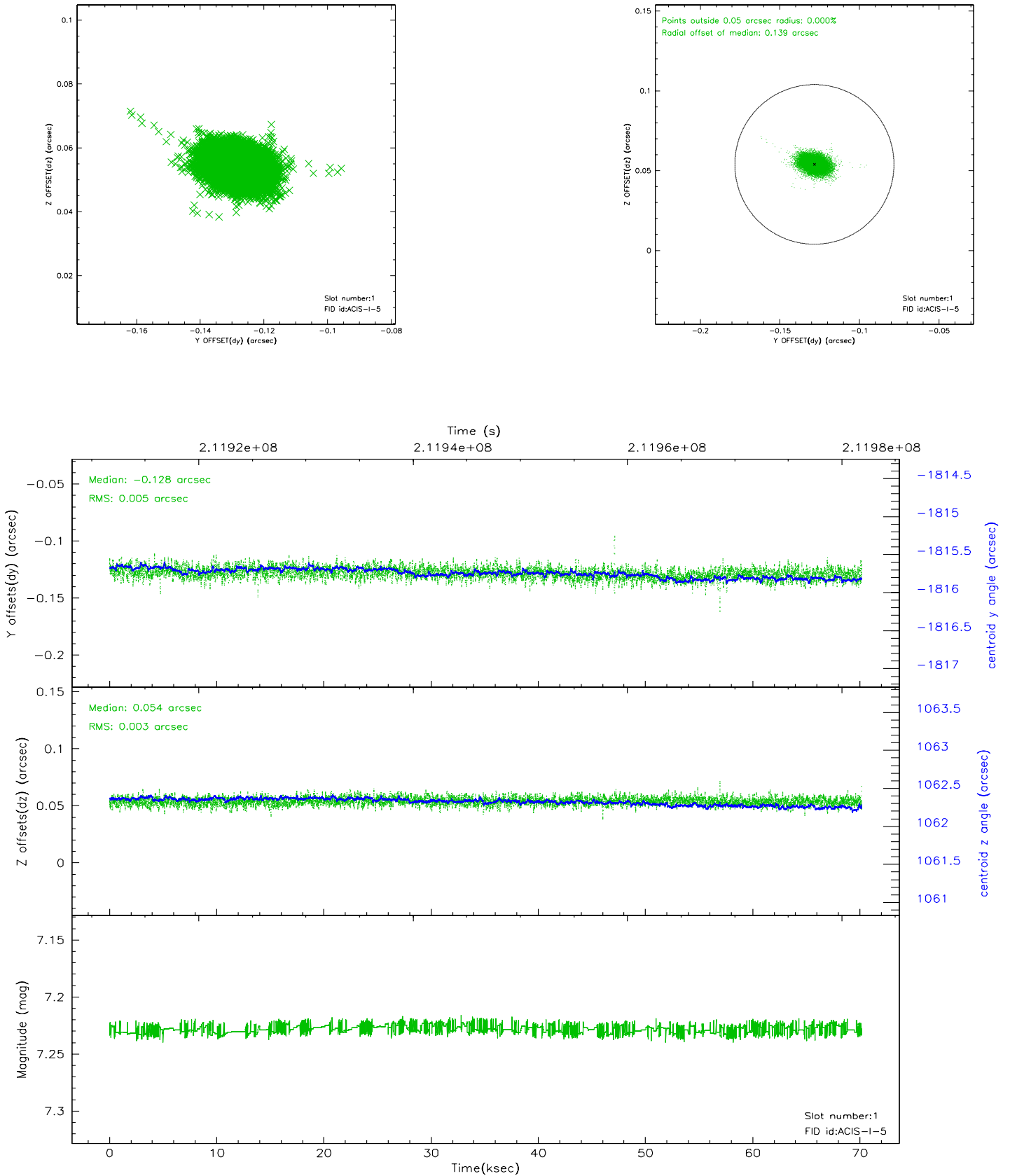


## 2.5 FID Slots

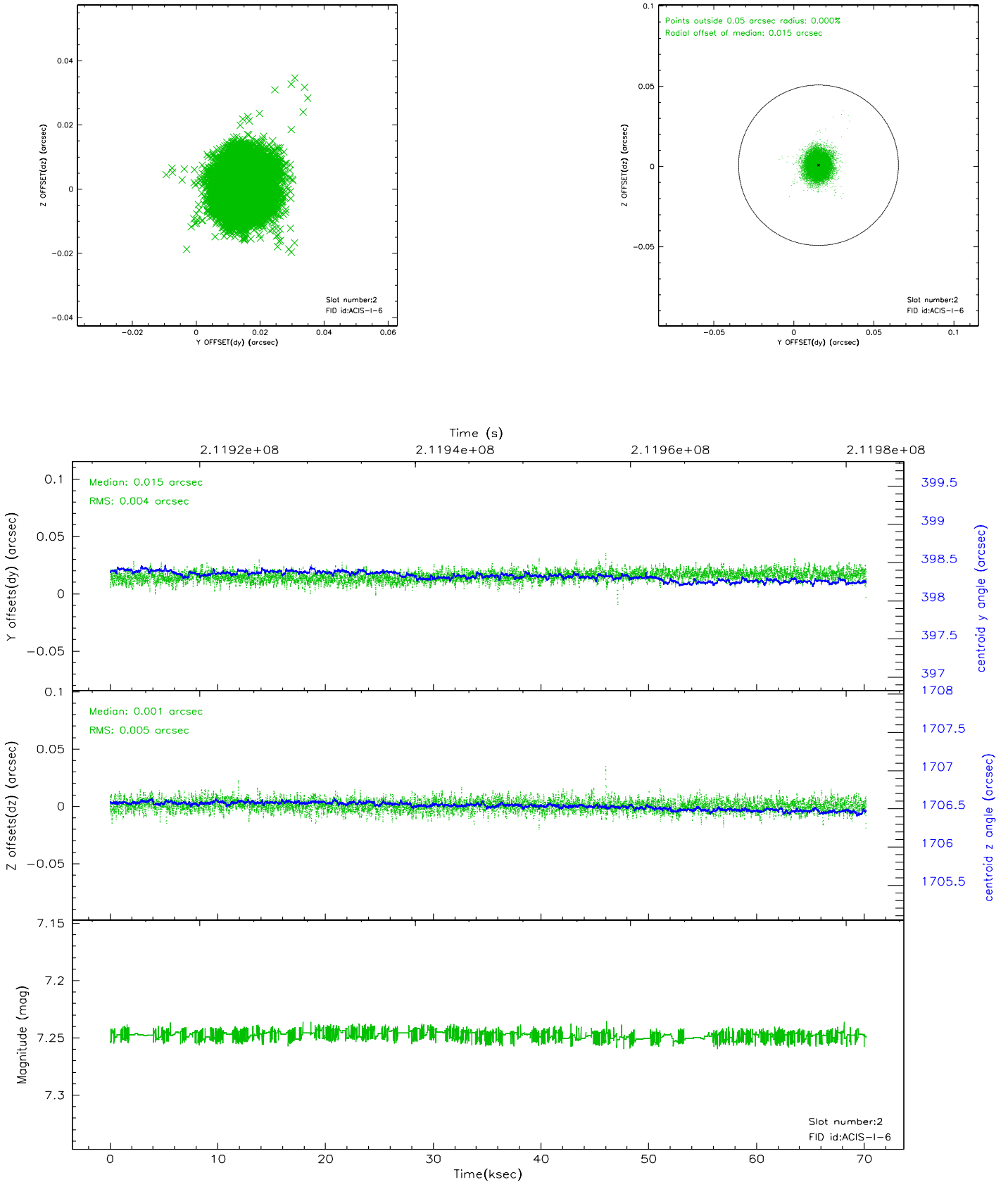
### 2.5.1 Slot 0



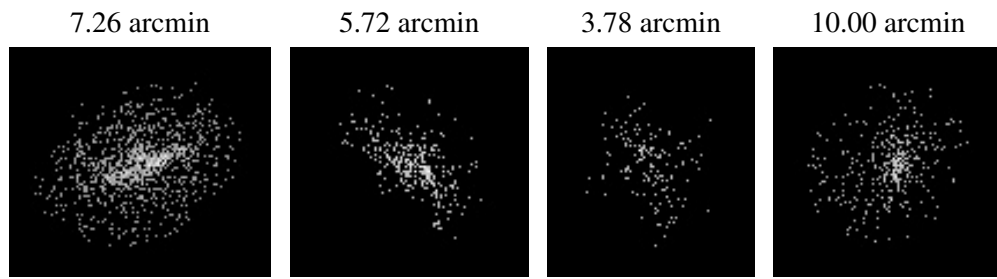
## 2.5.2 Slot 1



### 2.5.3 Slot 2



### 3 Point Sources



## A Summary

### A.1 Status

V&V Scientist	Jen Lauer
V&V Date (YYYY-MM-DD)	2006.04.18
V&V Edition	1
V&V Disposition and Status	OK
V&V Charge Time	69.774

### A.2 Comments

Roll constraint met.