

V&V Reference Report

L2 ASCDS Version : 7.6.7.1

Observation 4736 - L2 Version 001
Chandra X-Ray Center

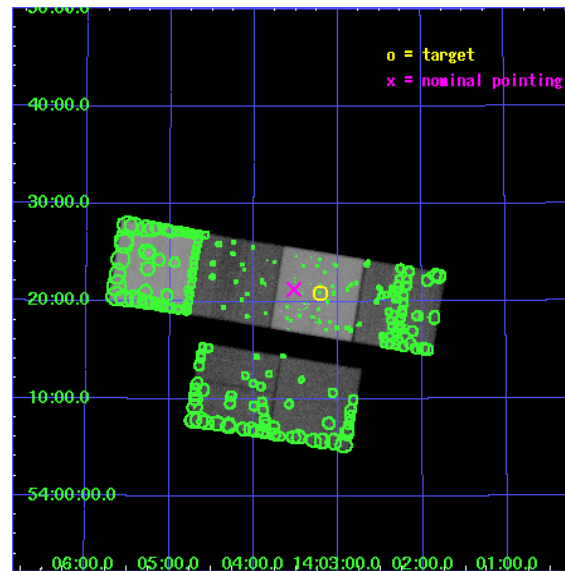
L2 Processing Date : Apr 13 2006

Contents

1	Front	2
2	OBI	3
2.1	OBI	3
2.1.1	Images	3
2.1.2	Bias	3
2.1.3	Parameters	4
2.1.4	Events	4
2.2	Compared Parameters	5
2.3	Aspect	6
2.4	Star Slots	9
2.4.1	Slot 3	9
2.4.2	Slot 4	10
2.4.3	Slot 5	11
2.4.4	Slot 6	12
2.4.5	Slot 7	13
2.5	FID Slots	14
2.5.1	Slot 0	14
2.5.2	Slot 1	15
2.5.3	Slot 2	16
3	Point Sources	17
A	Summary	18
A.1	Status	18
A.2	Comments	18

1 Front

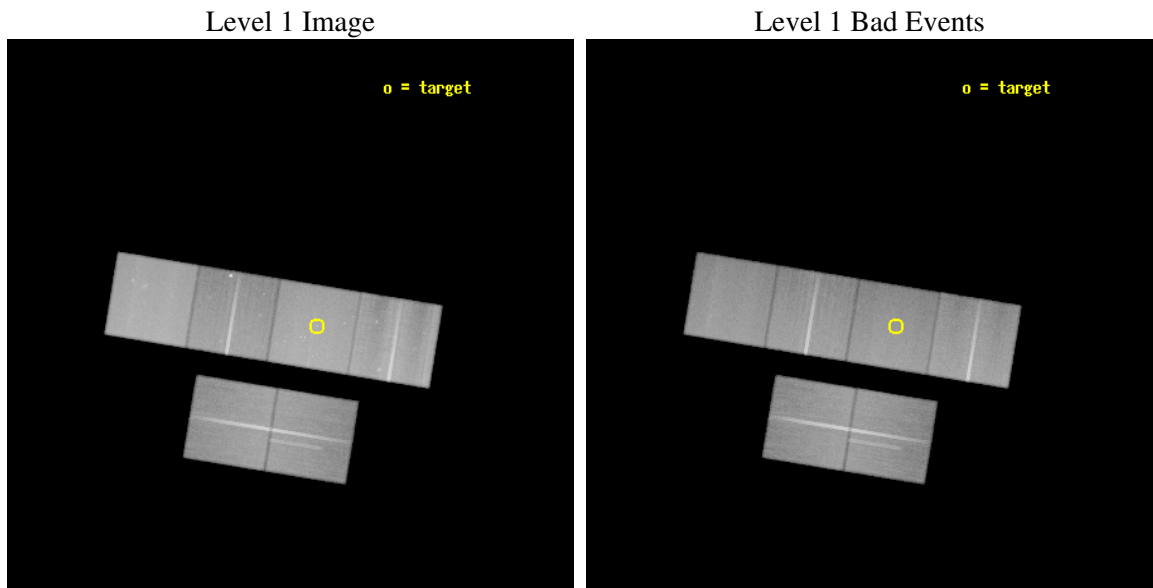
seq_num	600391
obs_id	4736
title	An Ultra-Deep Study of M101
observer	Dr. K. Kuntz
object	M101
dtcycle	0
cycle	P
ra_targ	210.80375
dec_targ	54.348778
ra_nom	210.88156106627
dec_nom	54.354410305171
roll_nom	9.2933966231314
revision	2
ontime	78342.399708152
livetime	77350.381070917
ontime2	78332.676916808
ontime3	78332.676936805
ontime5	78342.399708152
ontime6	78335.917907119
ontime7	78342.399708152
ontime8	78332.677046418
l2events	1033001



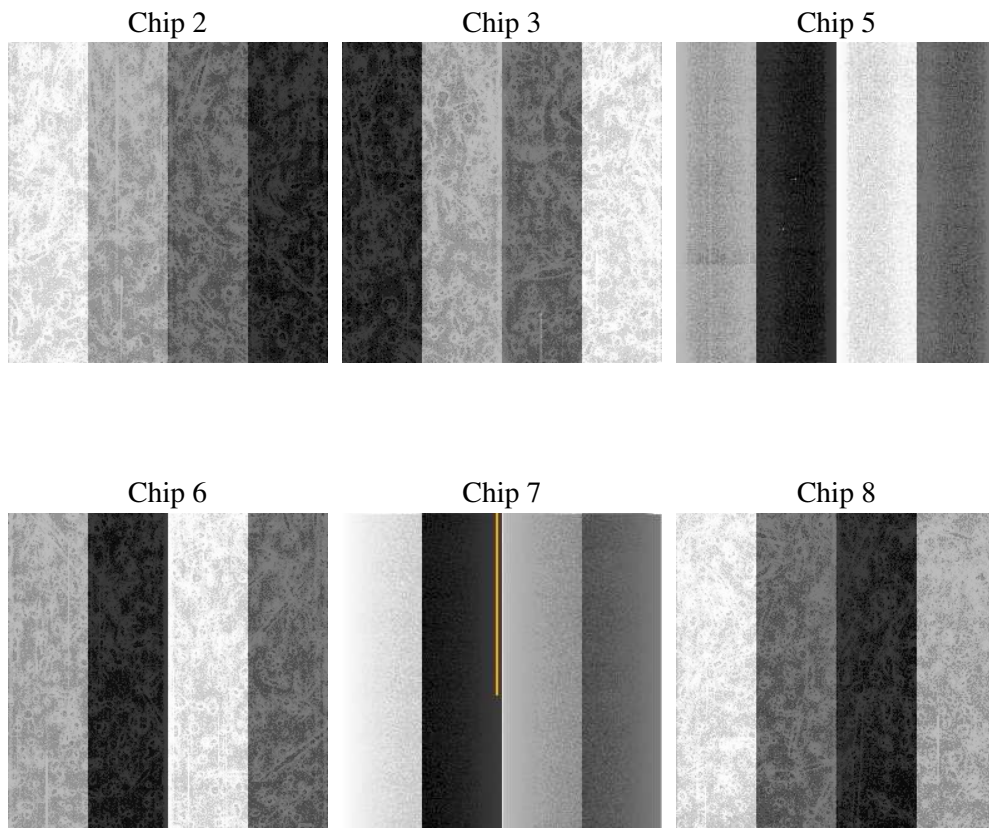
2 OBI

2.1 OBI

2.1.1 Images



2.1.2 Bias



2.1.3 Parameters

obi_num	0
ascdsver	7.6.7.1
caldsver	3.2.1
date	2006-04-13T18:32:34
revision	2

sched_exp_time	78200.000000
ontime	78788.757881552
ontime2	78779.0350703
ontime3	78779.035110205
ontime5	78788.757881552
ontime6	78782.276060611
ontime7	78788.757881552
ontime8	78779.035219818
l1events	4598164

2.1.4 Events

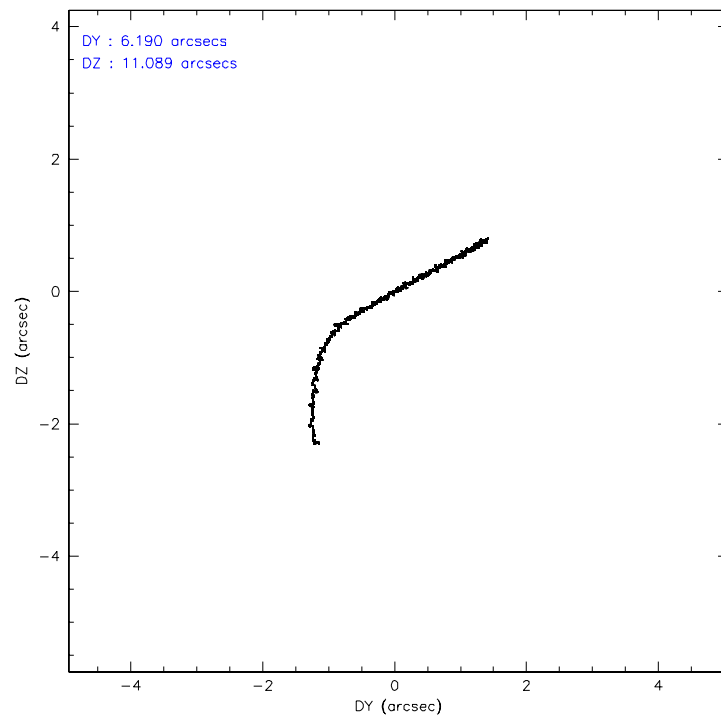
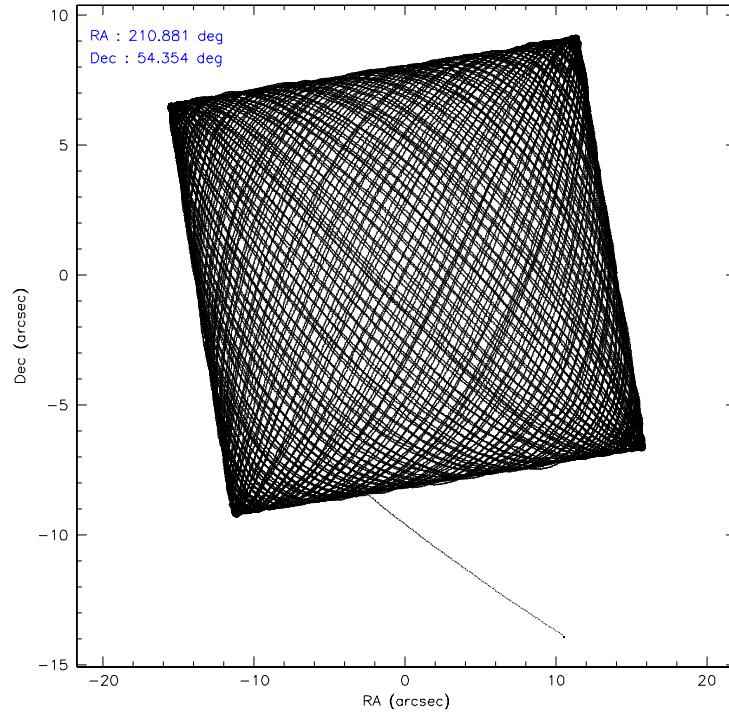
	ccd 2	ccd 3	ccd 5	ccd 6	ccd 7	ccd 8
level 1 events	661653	621361	926763	667568	871569	849250
rejected events	580990	545404	523366	582773	527893	638583
rejected %	87%	87%	56%	87%	60%	75%

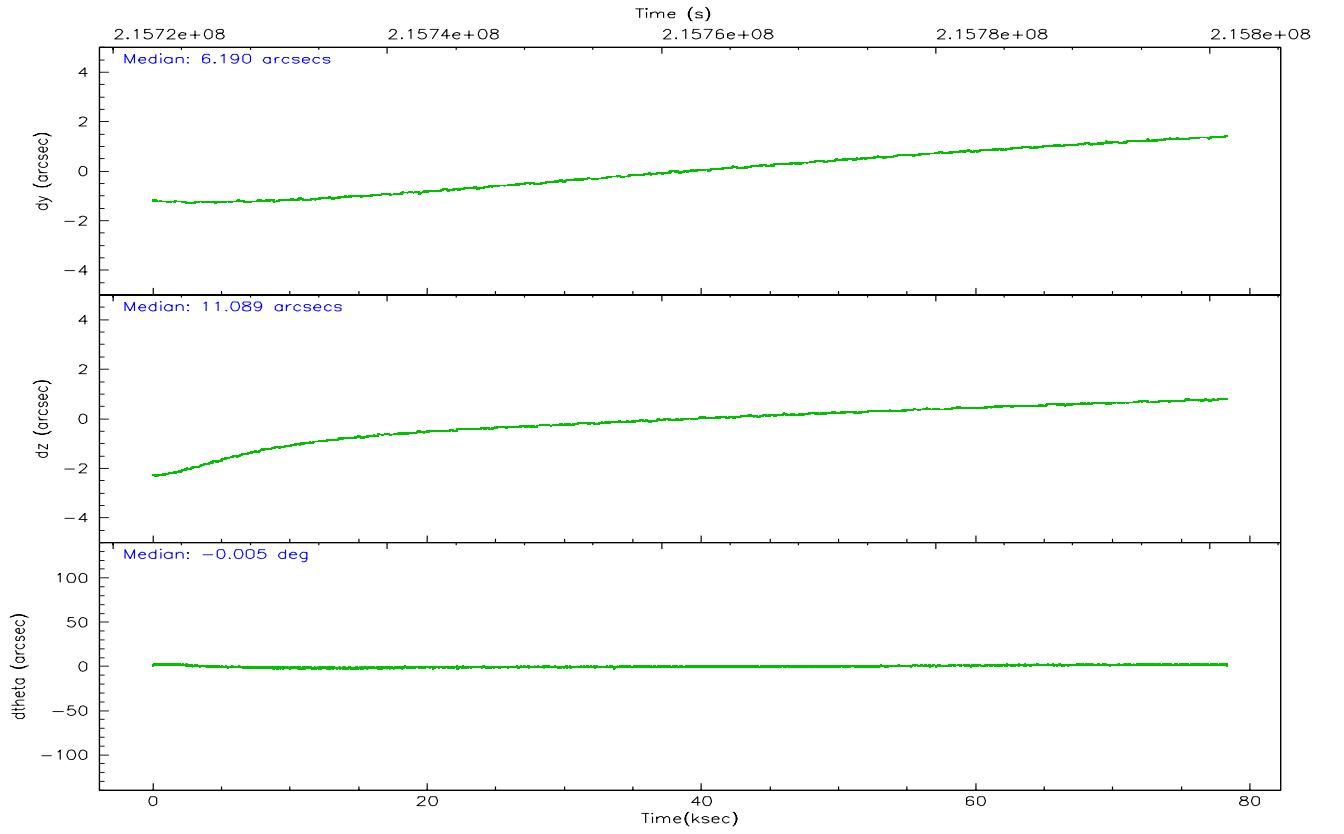
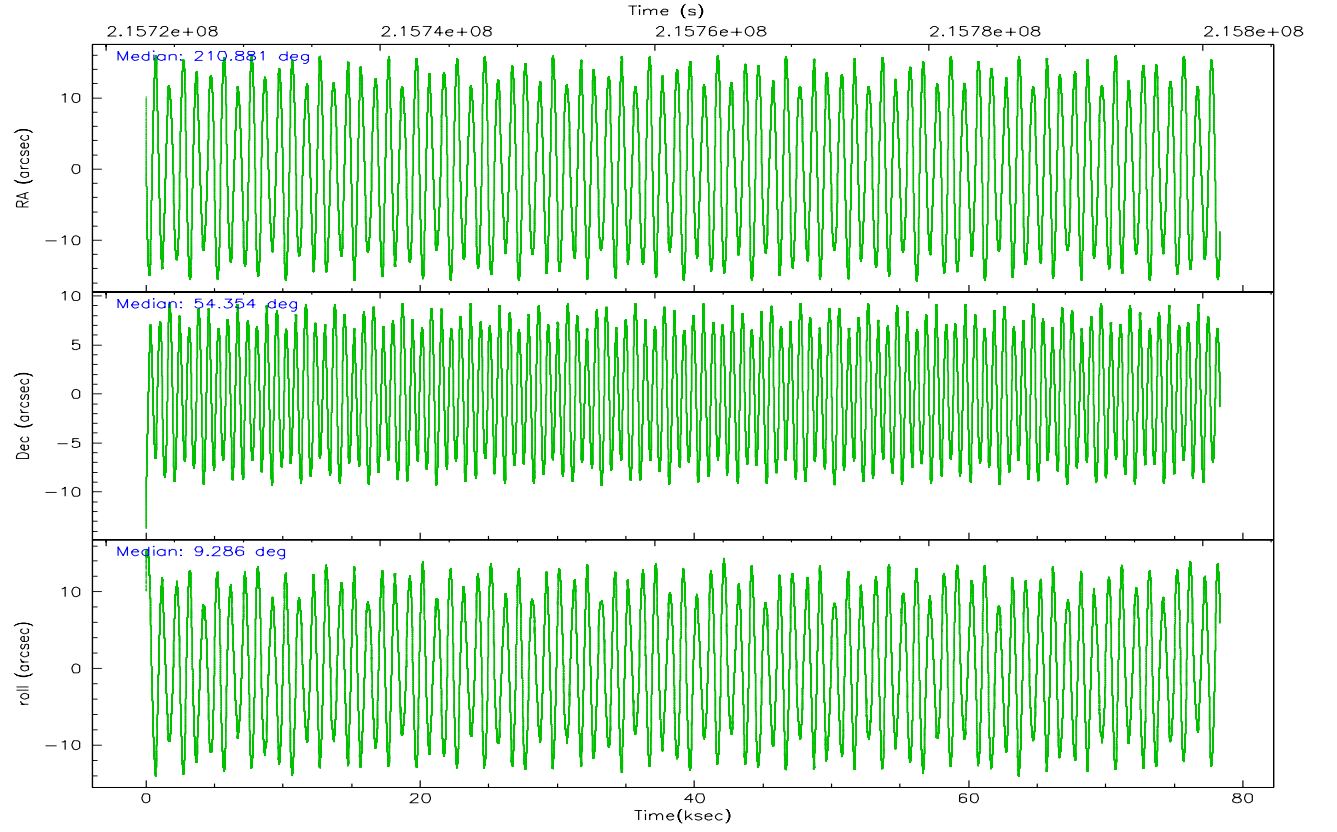
	ccd 2	ccd 3	ccd 5	ccd 6	ccd 7	ccd 8
grade 0 events	37677	34235	17846	37933	23800	70610
	5%	5%	1%	5%	2%	8%
grade 1 events	435	408	889	367	539	641
	0%	0%	0%	0%	0%	0%
grade 2 events	16271	14480	129470	16979	86475	43134
	2%	2%	13%	2%	9%	5%
grade 3 events	7109	7323	9628	7555	17789	24391
	1%	1%	1%	1%	2%	2%
grade 4 events	7347	7295	9258	7456	17262	22439
	1%	1%	0%	1%	1%	2%
grade 5 events	24641	27209	45631	28817	55859	38539
	3%	4%	4%	4%	6%	4%
grade 6 events	12834	13154	240013	15479	200468	51668
	1%	2%	25%	2%	23%	6%
grade 7 events	555339	517257	474028	552982	469377	597828
	83%	83%	51%	82%	53%	70%

2.2 Compared Parameters

Parameter	Planned	Actual	Parameter	Planned	Actual
Instrument	ACIS	ACIS	Obspar format version number	6	6
Detector	ACIS-235678	ACIS-235678	Obspar file type	PREDICTED	ACTUAL
Grating	NONE	NONE	Obspar update status	NONE	UPDATED
Data mode	VFAINT	VFAINT	On-chip summing requested	N	N
Observation mode	POINTING	POINTING	Subarray requested	NONE	NONE
Pointing RA	210.845857	210.8815610662722	Alternating exposures requested	N	N
Pointing Dec	54.336878	54.3544103051707	Primary exposure time	0.000000	3.2
Pointing Roll	9.165783	9.293396623131379			
SIM focus pos (mm)	-0.684267	-0.6828225247311905			
SIM defocus (mm)	0	0.001444936568705701			
SIM translation stage pos (mm)	-190.132523	-190.1400660498719			
SIM translation stage offset (mm)	0	0.00754346686406393			
Observation start time	215723066.184000	215721789.67814			
Observation start date	2004-11-01T19:03:22	2004-11-01T18:43:09			
Observation end time	215801266.184000	215801798.61923			
Observation end date	2004-11-02T16:46:42	2004-11-02T16:56:38			
Read mode	TIMED	TIMED			

2.3 Aspect



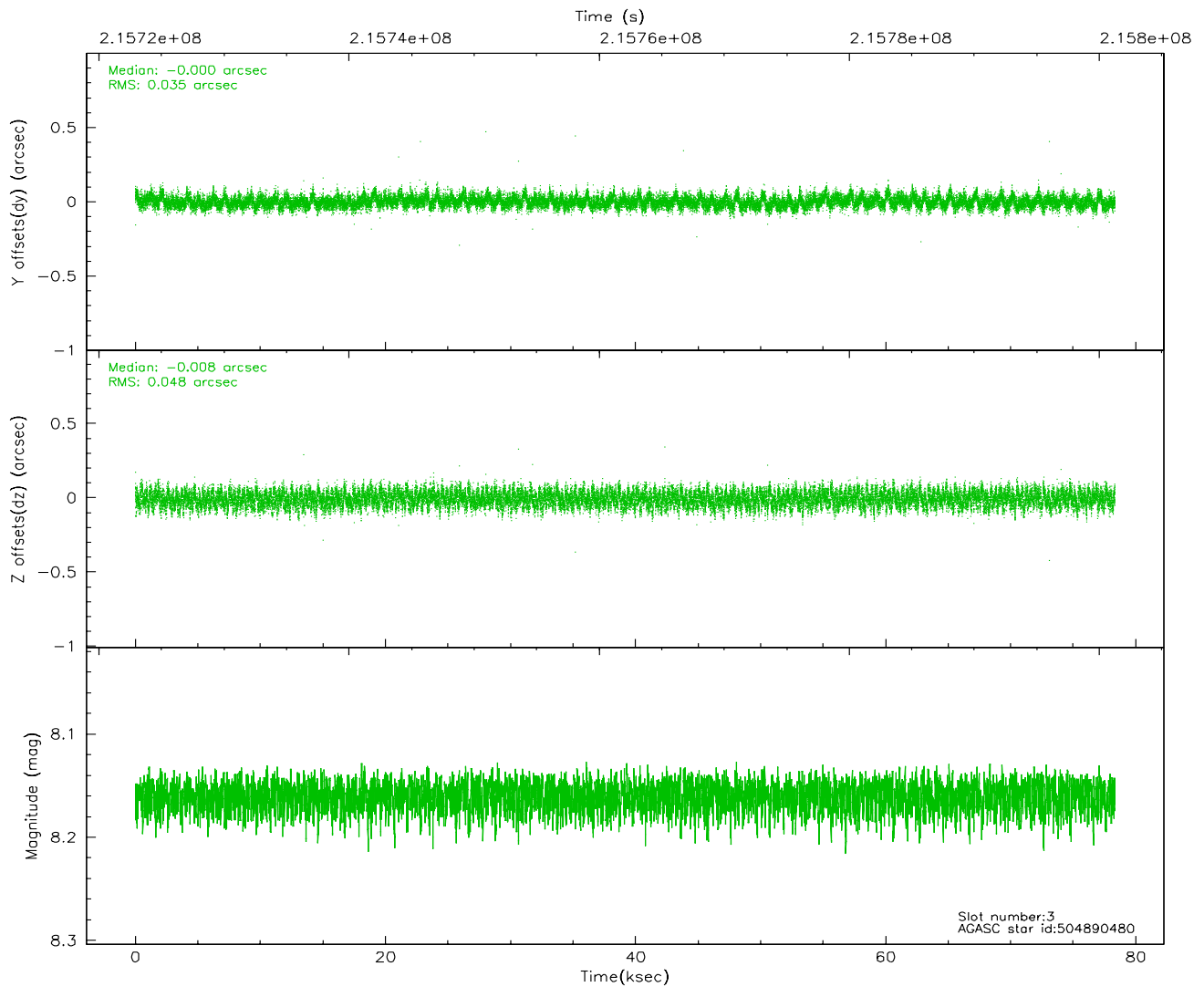
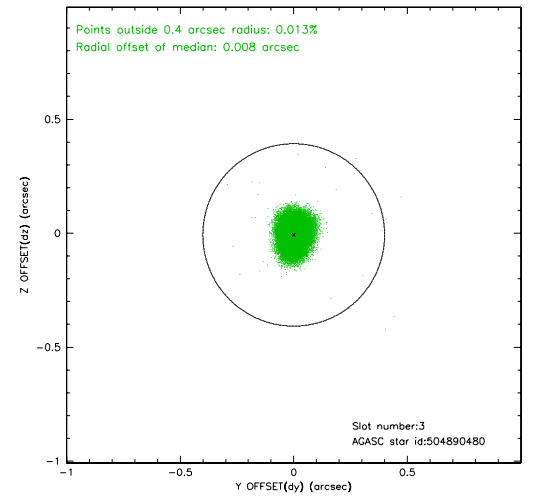
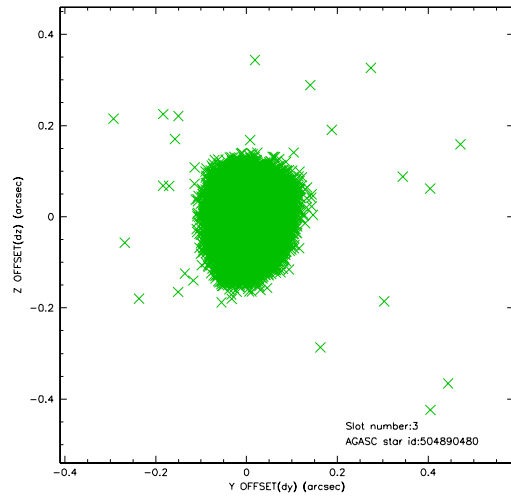


Slot Statistics

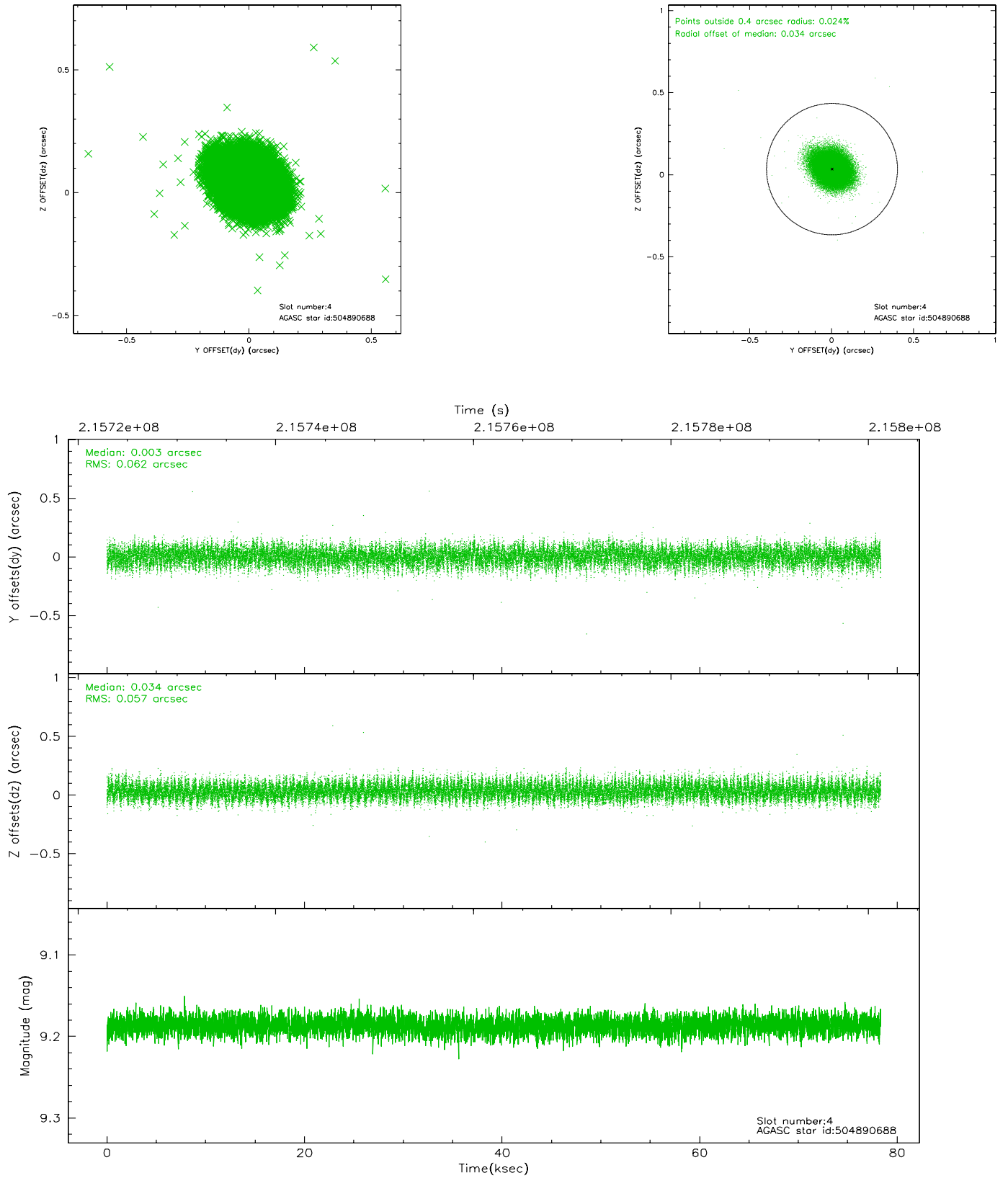
slot	status	id	mag	n_pts	med_dy	med_dz	dr1	dr2	ra	dec	mean_y	mean_z
0	FID	ACIS-S-1	7.18	19110	-0.011	-0.049	0.033	0.058	0.000000	0.000000	937.10	-1727.88
1	FID	ACIS-S-4	7.20	19109	0.027	0.039	0.028	0.060	0.000000	0.000000	2154.51	176.42
2	FID	ACIS-S-5	7.23	19109	-0.043	0.016	0.023	0.050	0.000000	0.000000	-1811.90	169.93
3	GUIDE	504890480	8.16	38212	-0.000	-0.008	0.063	0.101	210.132463	53.768436	-1823.33	-1771.29
4	GUIDE	504890688	9.19	38188	0.003	0.034	0.089	0.143	211.697686	53.837149	1502.41	-2053.42
5	GUIDE	504891480	8.07	38218	-0.065	-0.051	0.070	0.112	210.708012	54.666096	-94.34	1216.22
6	GUIDE	504894408	9.28	38188	-0.022	-0.022	0.097	0.159	211.942794	54.047749	2126.33	-1378.52
7	GUIDE	504894856	8.97	38204	0.087	0.051	0.074	0.119	209.819510	54.132689	-2251.19	-365.32

2.4 Star Slots

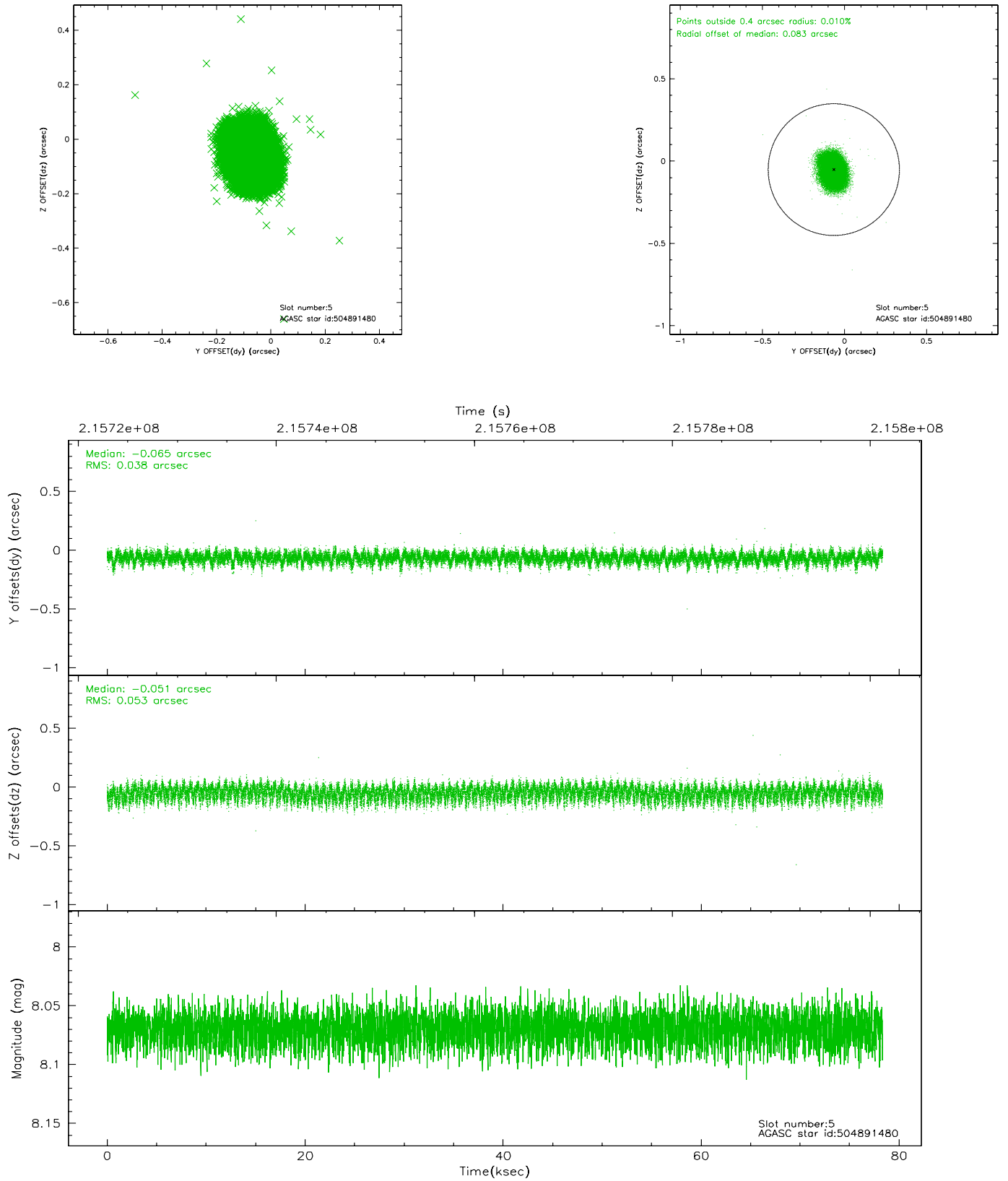
2.4.1 Slot 3



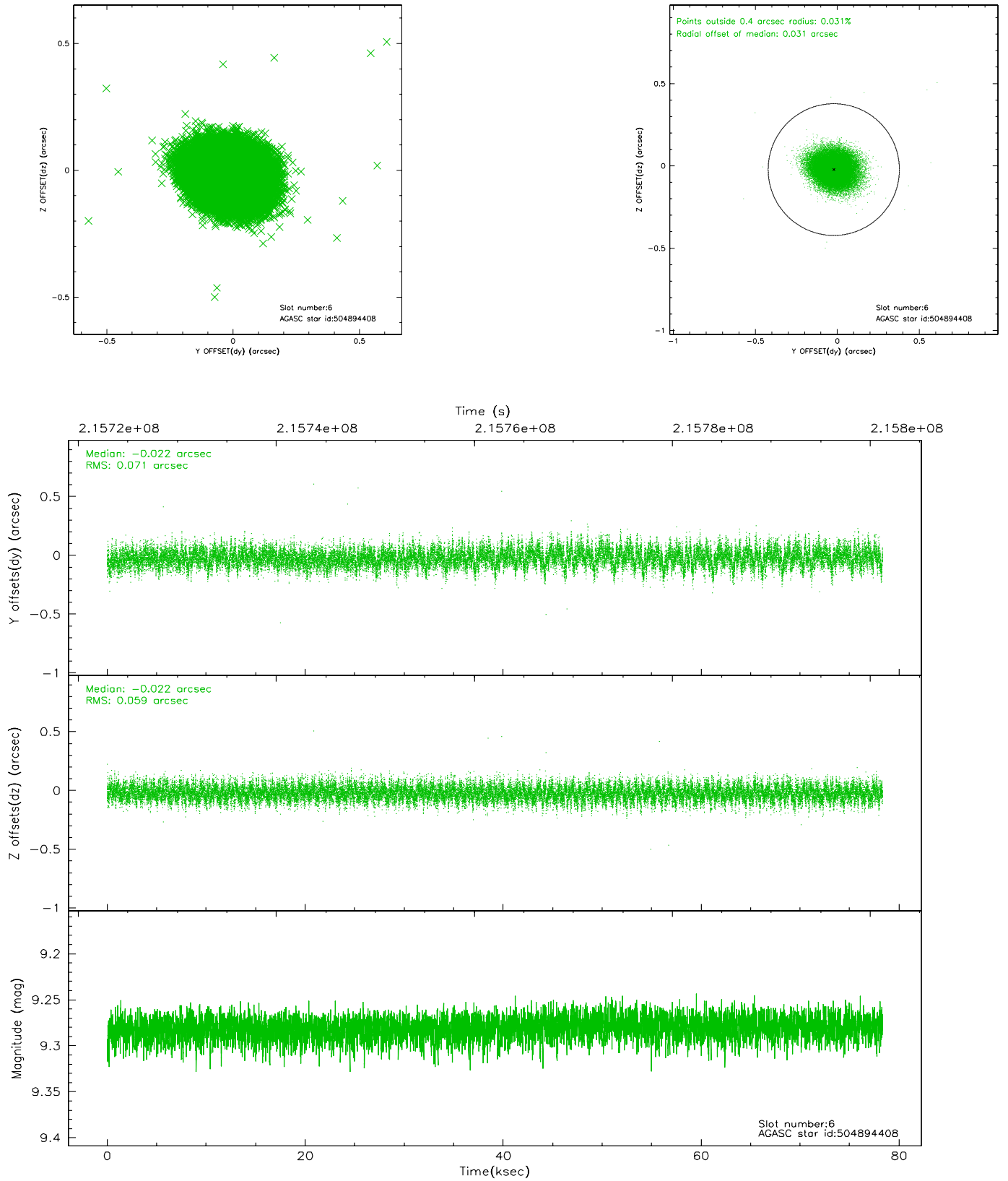
2.4.2 Slot 4



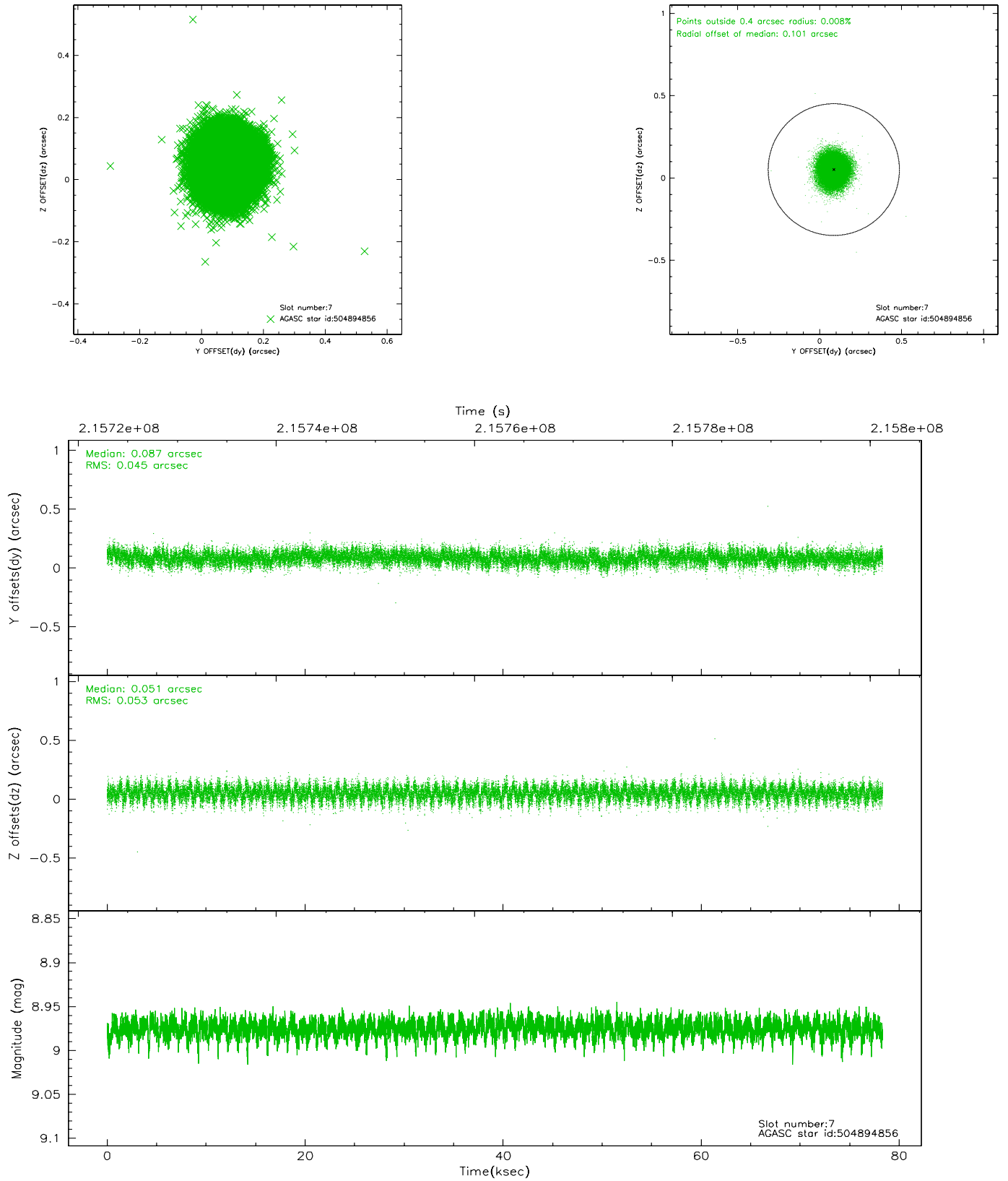
2.4.3 Slot 5



2.4.4 Slot 6

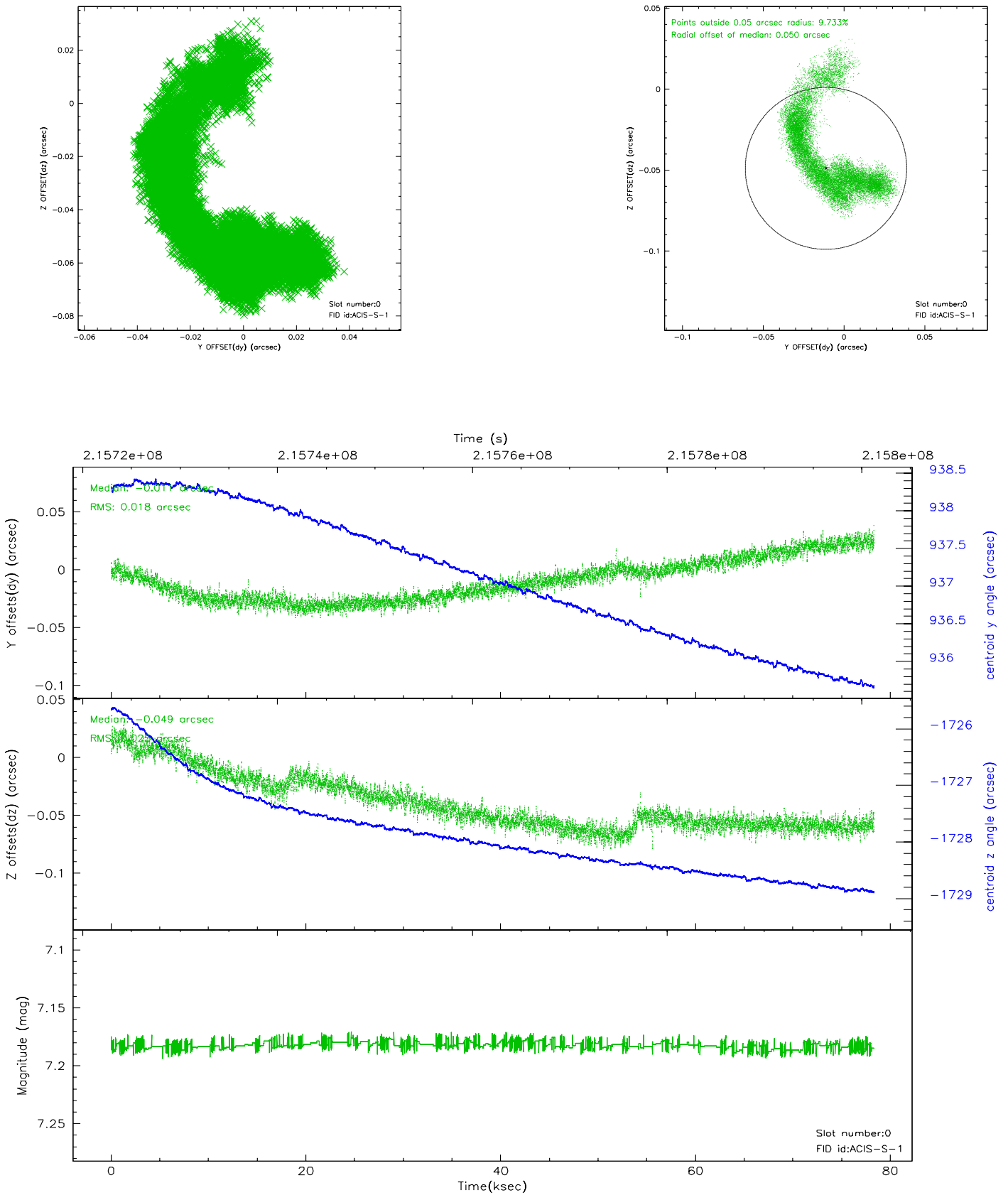


2.4.5 Slot 7

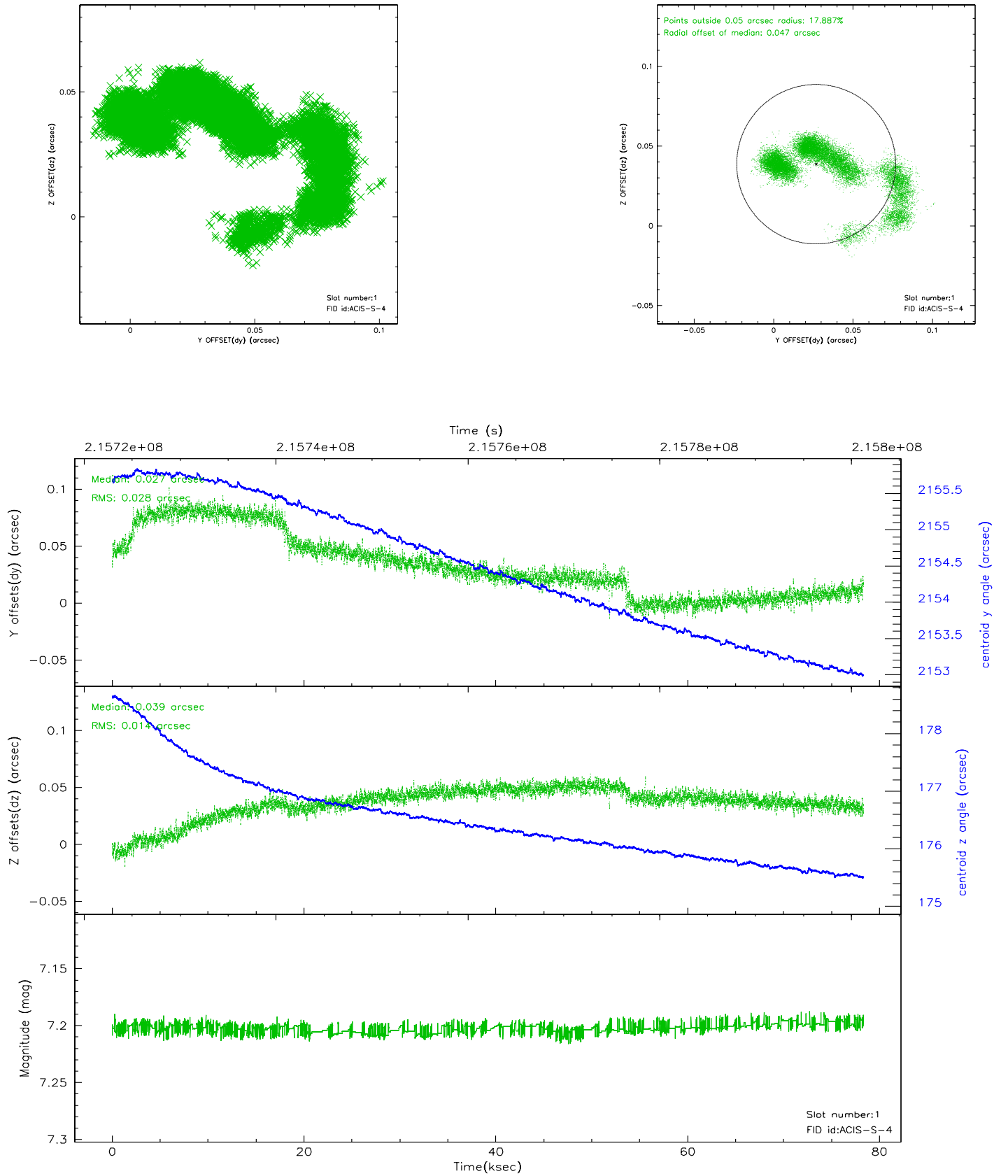


2.5 FID Slots

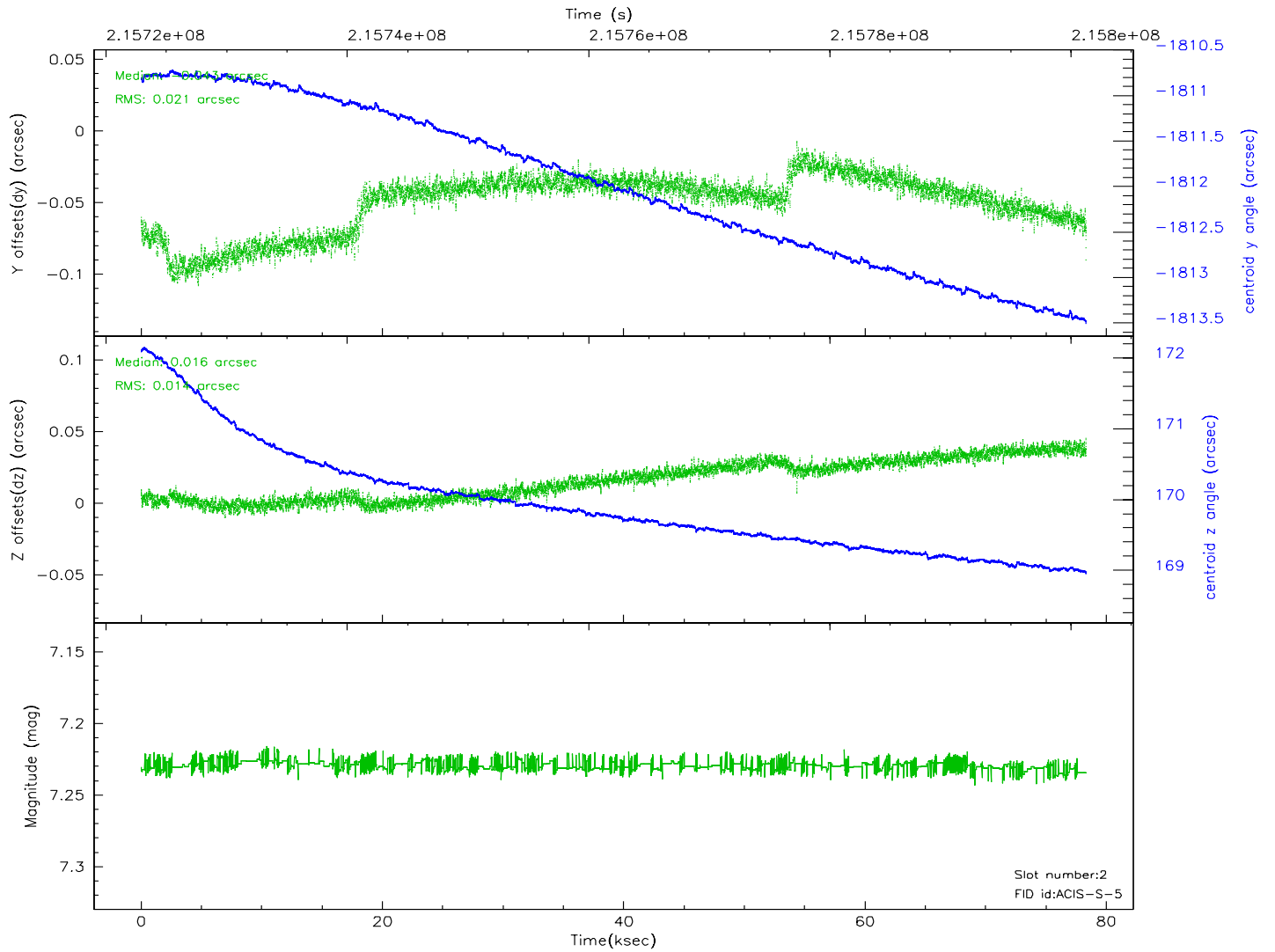
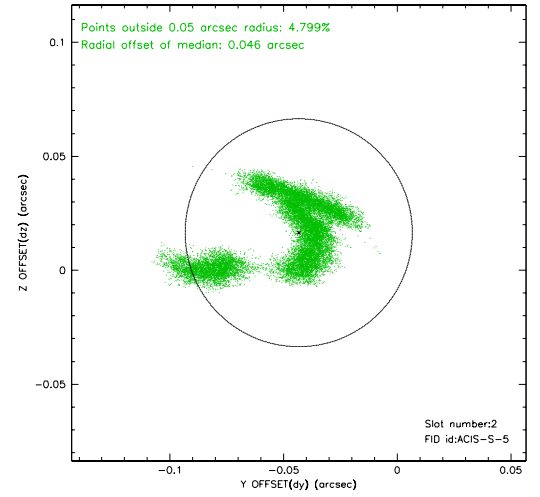
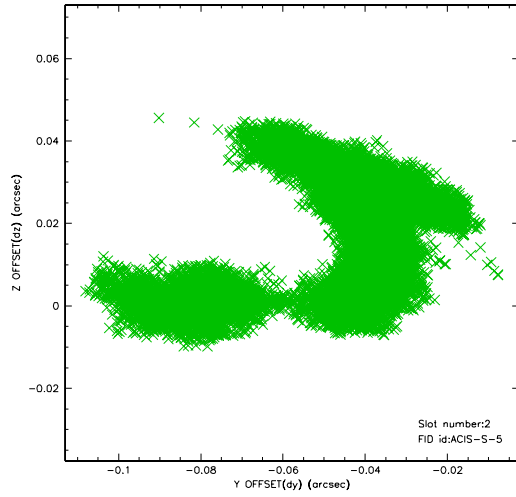
2.5.1 Slot 0



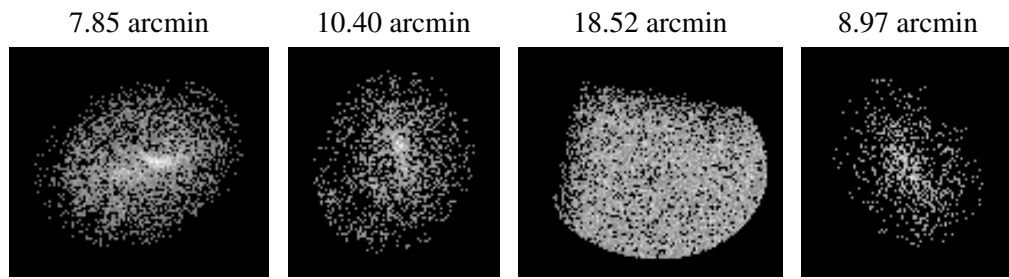
2.5.2 Slot 1



2.5.3 Slot 2



3 Point Sources



A Summary

A.1 Status

V&V Scientist	Jen Lauer
V&V Date (YYYY-MM-DD)	2006.04.14
V&V Edition	1
V&V Disposition and Status	OK
V&V Charge Time	78.342

A.2 Comments

Monitor constraint not met, missed by one day. The ACIS focal plane temperature decreased by more than one degree over the course of the observation.