

V&V Reference Report

L2 ASCDS Version : 8.5.1

Observation 4716 - L2 Version 3
Chandra X-Ray Center

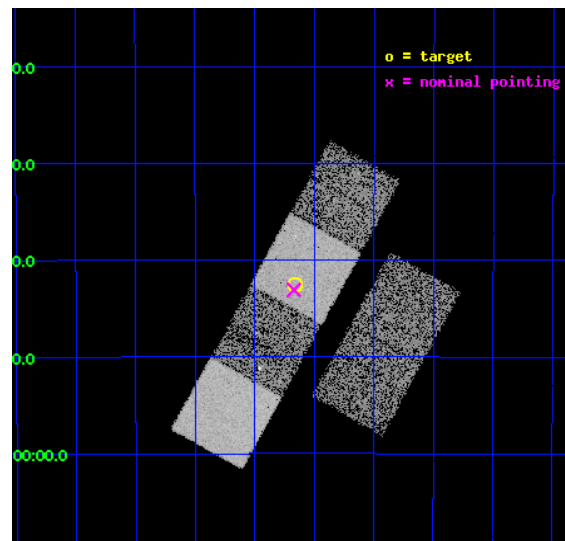
L2 Processing Date : Dec 14 2012

Contents

1	Front	2
2	OBI	3
2.1	OBI	3
2.1.1	Images	3
2.1.2	Bias	3
2.1.3	Parameters	4
2.1.4	Events	4
2.2	Compared Parameters	5
2.3	Aspect	6
2.4	Star Slots	9
2.4.1	Slot 3	9
2.4.2	Slot 4	10
2.4.3	Slot 5	11
2.4.4	Slot 6	12
2.4.5	Slot 7	13
2.5	FID Slots	14
2.5.1	Slot 0	14
2.5.2	Slot 1	15
2.5.3	Slot 2	16
A	Summary	17
A.1	Status	17
A.2	Comments	17

1 Front

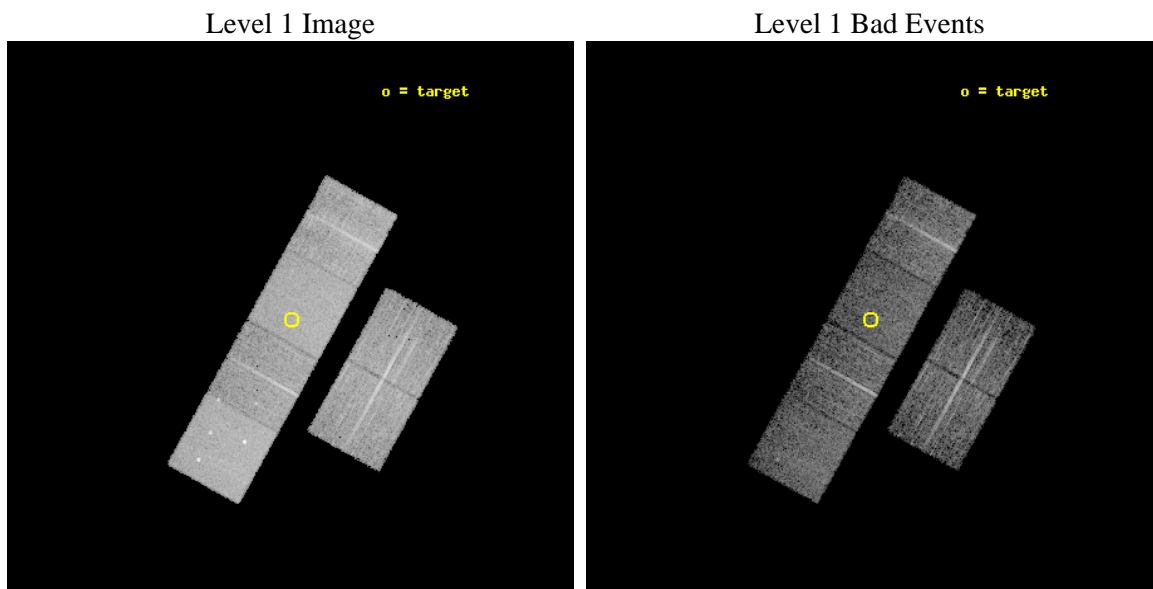
seq_num	600371	Sequence number
obs_id	4716	Observation id
title	Using the Sculptor Dwarf Spheroidal Galaxy to Constrain X-ray Binary Production in Population II	Proposal title
observer	Dr Thomas Maccarone	Principal investigator
object	SCULPTOR DWARF SPHEROIDAL	Source name
dtcycle	0	
cycle	P	events from which exps? Prim/Second/Both
ra_targ	15.039167	Observer's specified target RA [deg]
dec_targ	-33.708889	Observer's specified target Dec [deg]
ra_nom	15.042918312393	Nominal RA [deg]
dec_nom	-33.718068473299	Nominal Dec [deg]
roll_nom	299.09946789773	Nominal Roll [deg]
revision	3	Processing version of data
ontime	6091.3560730219	Sum of GTIs [s]
livetime	6014.223654651	Livetime [s]
ontime2	6088.1561427414	Sum of GTIs [s]
ontime3	6087.9919528365	Sum of GTIs [s]
ontime5	6091.3150330186	Sum of GTIs [s]
ontime6	6091.2739930153	Sum of GTIs [s]
ontime7	6091.3560730219	Sum of GTIs [s]
ontime8	6091.1919130385	Sum of GTIs [s]
l2events	76340	Number of level 2 events



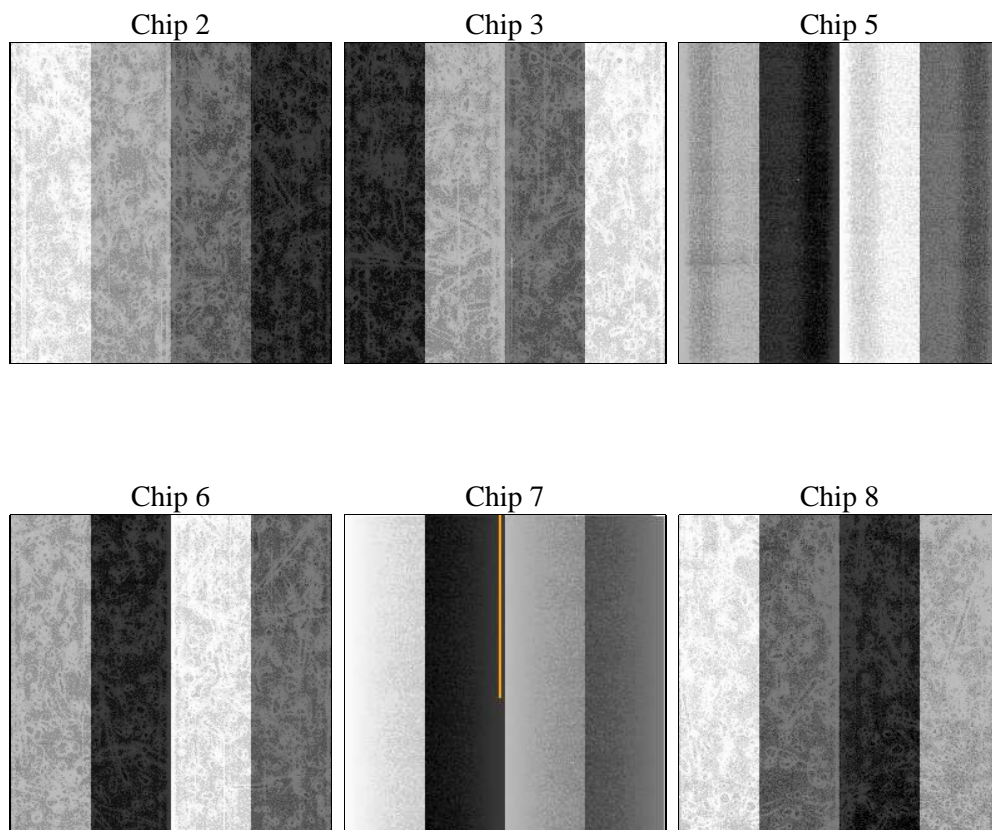
2 OBI

2.1 OBI

2.1.1 Images



2.1.2 Bias



2.1.3 Parameters

obi_num	1	Obi number	sched_exp_time	6000.000000	[s] Scheduled observation exposure time
ascdsver	8.5.1	Processing system revision	ontime	6091.3560730219	Sum of GTIs [s]
caldsver	4.5.5	 	ontime2	6088.1561427414	Sum of GTIs [s]
date	2012-12-14T20:27:07	Date and time of file creation	ontime3	6087.9919528365	Sum of GTIs [s]
revision	3	Processing version of data	ontime5	6091.3150330186	Sum of GTIs [s]
			ontime6	6091.2739930153	Sum of GTIs [s]
			ontime7	6091.3560730219	Sum of GTIs [s]
			ontime8	6091.1919130385	Sum of GTIs [s]
			l1events	338112	Number of level 1 events

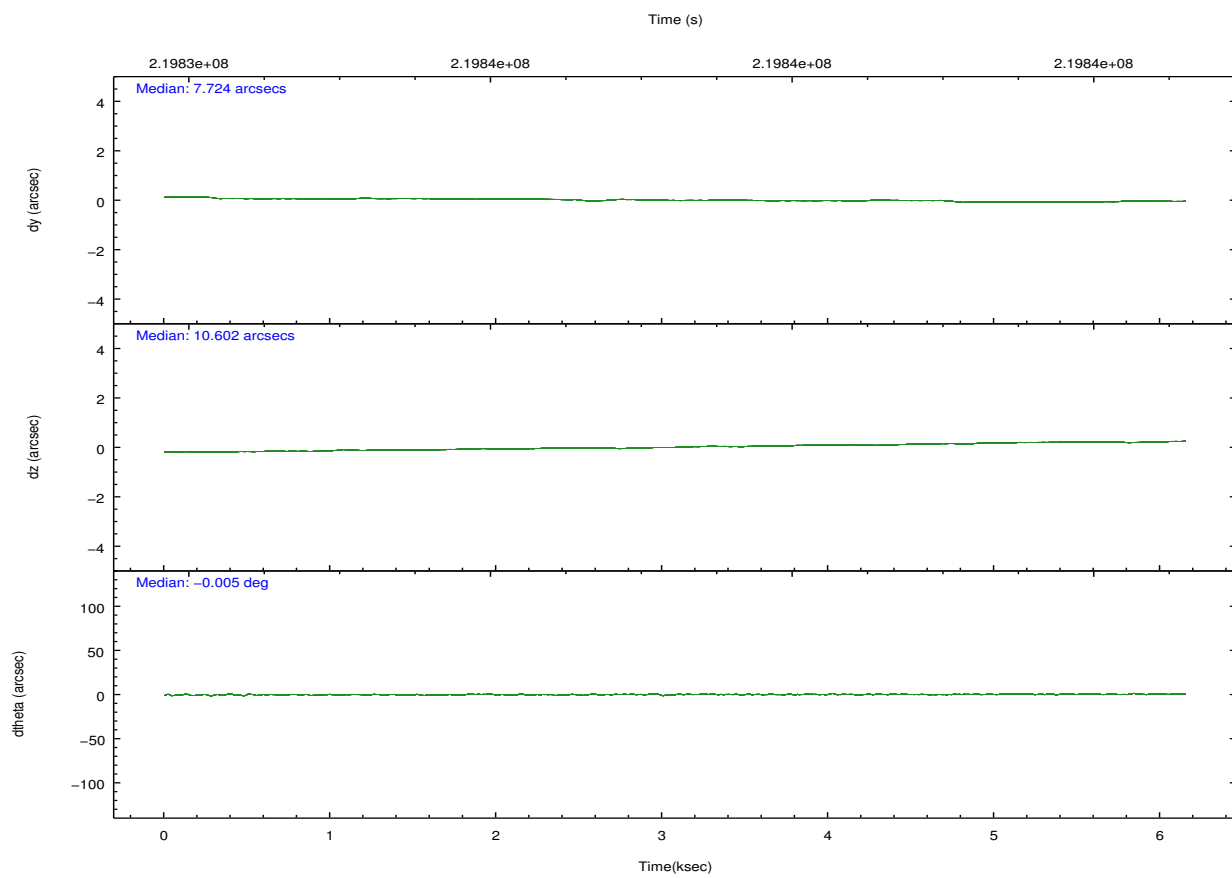
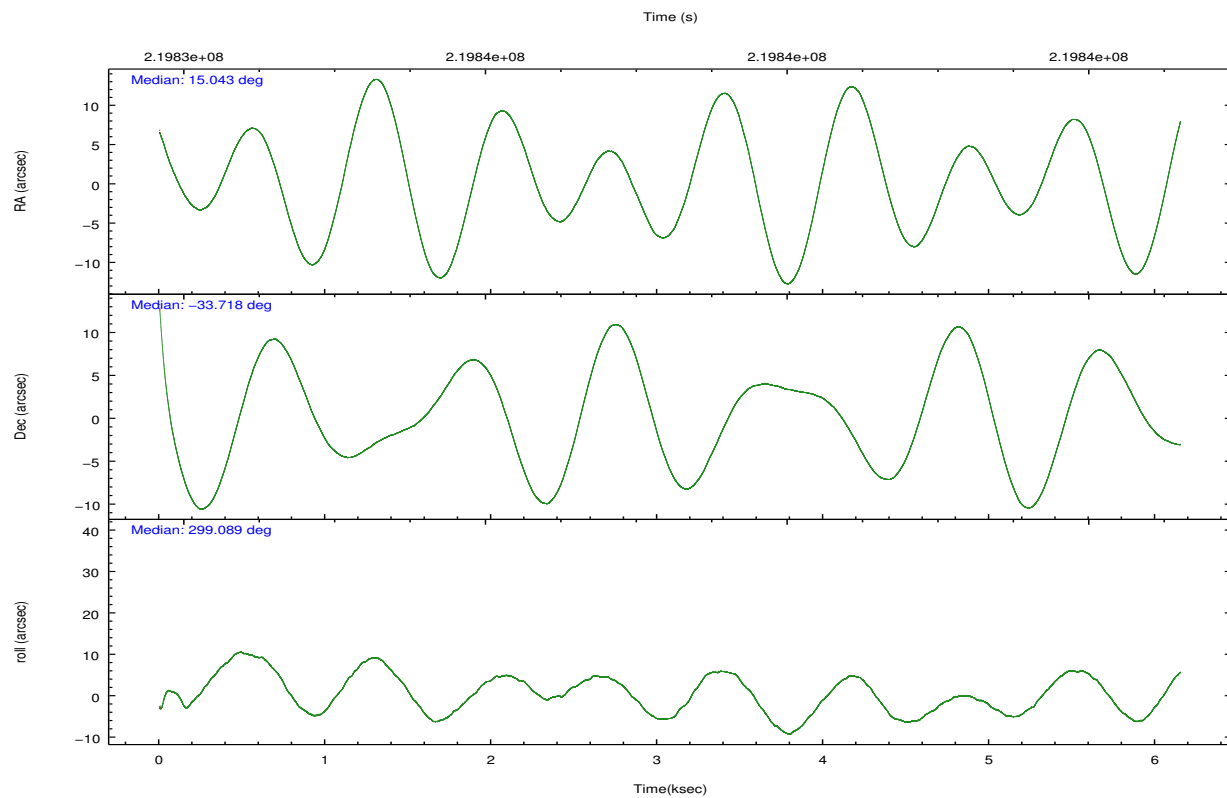
2.1.4 Events

	ccd 2	ccd 3	ccd 5	ccd 6	ccd 7	ccd 8		ccd 2	ccd 3	ccd 5	ccd 6	ccd 7	ccd 8
level 1 events	48795	46356	71506	47440	63453	60562	grade 0 events	2554	2308	4295	2400	2307	3956
rejected events	43093	40888	38067	41534	37181	47314		5%	4%	6%	5%	3%	6%
rejected %	88%	88%	53%	87%	58%	78%	grade 1 events	27	26	204	18	58	43
								0%	0%	0%	0%	0%	0%
							grade 2 events	1197	1031	9572	1221	5194	3058
								2%	2%	13%	2%	8%	5%
							grade 3 events	527	533	1266	576	2304	1372
								1%	1%	1%	1%	3%	2%
							grade 4 events	536	575	1224	540	2283	1269
								1%	1%	1%	1%	3%	2%
							grade 5 events	1880	2045	5340	2198	5978	2805
								3%	4%	7%	4%	9%	4%
							grade 6 events	896	1027	17125	1175	14212	3602
								1%	2%	23%	2%	22%	5%
							grade 7 events	41178	38811	32480	39312	31117	44457
								84%	83%	45%	82%	49%	73%

2.2 Compared Parameters

Parameter	Planned	Actual	Parameter	Planned	Actual
Instrument	ACIS	ACIS	Obspar format version number	7	7
Detector	ACIS-235678	ACIS-235678	Obspar file type	PREDICTED	ACTUAL
Grating	NONE	NONE	Obspar update status	NONE	UPDATED
Data mode	VFAINT	VFAINT	Number of optional ACIS chips dropped	0	0
Observation mode	POINTING	POINTING	On-chip summing requested	N	N
[deg] Pointing RA	15.014644	15.04291831239285	Subarray requested	NONE	NONE
[deg] Pointing Dec	-33.704366	-33.71806847329902	Alternating exposures requested	N	N
[deg] Pointing Roll	298.927165	299.0994678977265	[s] Primary exposure time	0.000000	3.2
[mm] SIM focus pos	-0.684267	-0.6828225247311905			
[mm] SIM defocus	0	0.001444936568705701			
[mm] SIM translation stage pos	-190.132523	-190.1400660498719			
[mm] SIM translation stage offset	0	0.00754346686406393			
[s] Observation start time (MET)	219834300.184000	219833271.91283			
Observation start date	2004-12-19T09:03:56	2004-12-19T08:47:51			
[s] Observation end time (MET)	219840300.184000	219840899.45067			
Observation end date	2004-12-19T10:43:56	2004-12-19T10:54:59			
Read mode	TIMED	TIMED			

2.3 Aspect

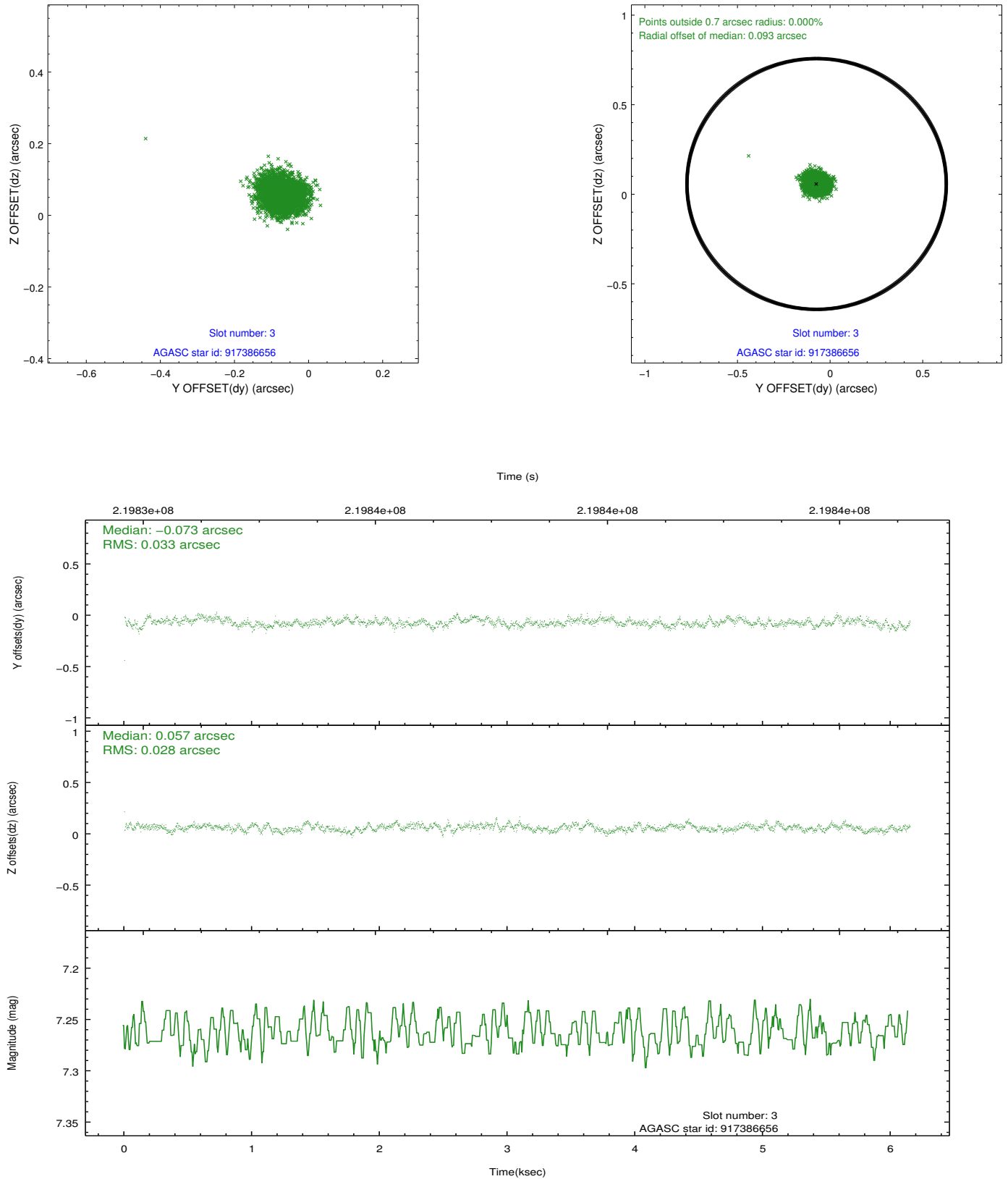


Slot Statistics

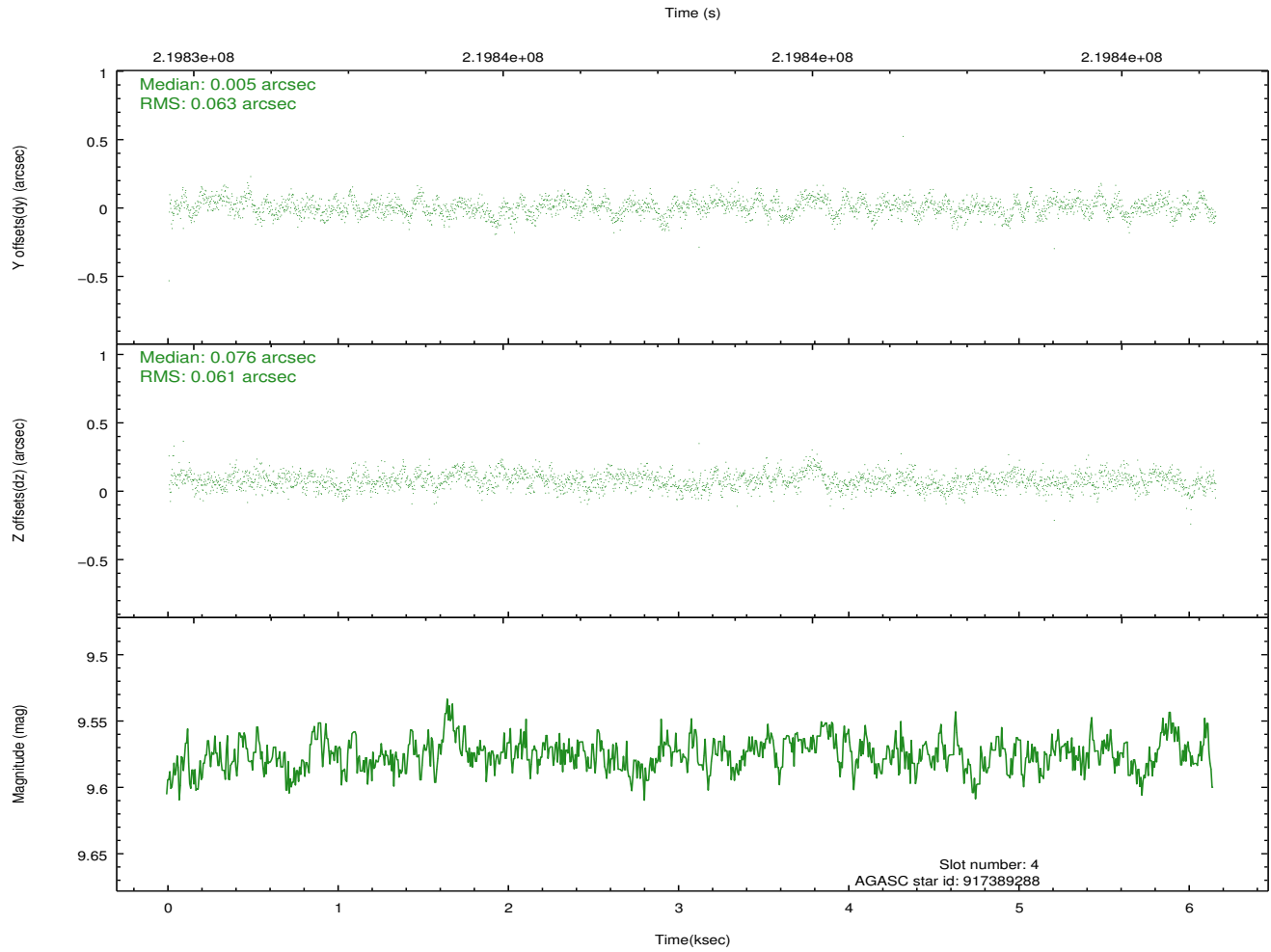
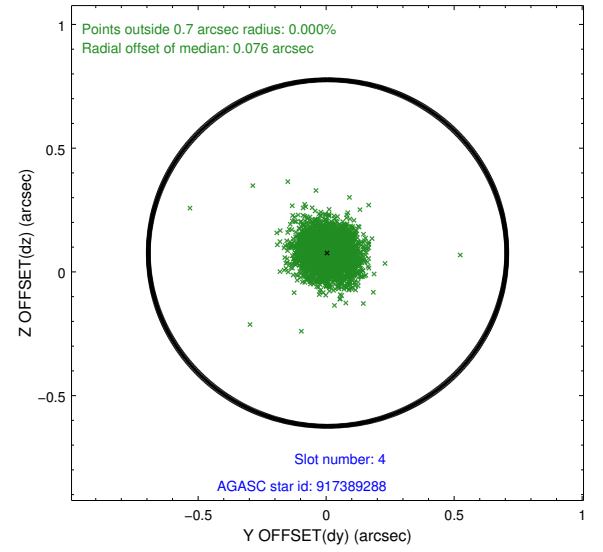
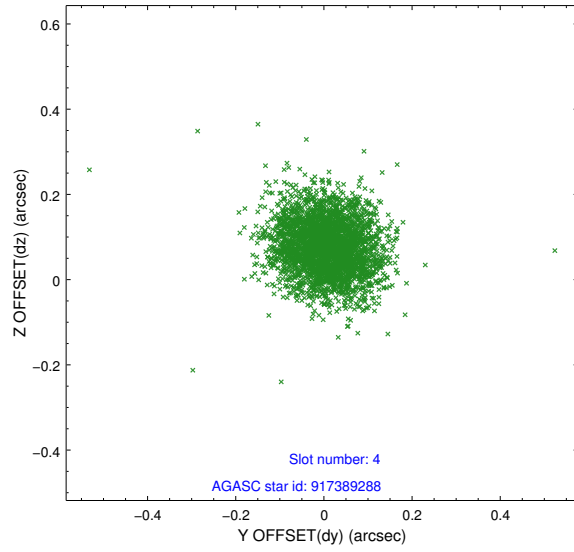
slot	status	id	mag	n_pts	med_dy	med_dz	dr1	dr2	ra	dec	mean_y	mean_z
0	FID	ACIS-S-2	7.10	1501	-0.045	-0.011	0.007	0.011	0.000000	0.000000	-760.51	-1731.91
1	FID	ACIS-S-4	7.21	1501	0.097	0.025	0.007	0.012	0.000000	0.000000	2152.43	175.68
2	FID	ACIS-S-5	7.23	1501	-0.083	-0.005	0.007	0.012	0.000000	0.000000	-1812.20	170.32
3	GUIDE	917386656	7.26	3001	-0.073	0.057	0.046	0.073	15.342124	-33.359890	-607.89	1461.45
4	GUIDE	917389288	9.58	2999	0.005	0.076	0.091	0.149	15.394706	-33.185862	-1078.28	1904.89
5	GUIDE	917390768	9.87	3000	-0.090	0.078	0.114	0.186	14.870561	-33.104152	-2101.44	665.59
6	GUIDE	917650528	8.72	2998	-0.100	-0.073	0.084	0.132	14.274554	-33.869842	-541.89	-2227.61
7	GUIDE	917651048	9.65	2998	0.253	-0.141	0.102	0.160	14.655628	-34.424089	1754.43	-2187.41

2.4 Star Slots

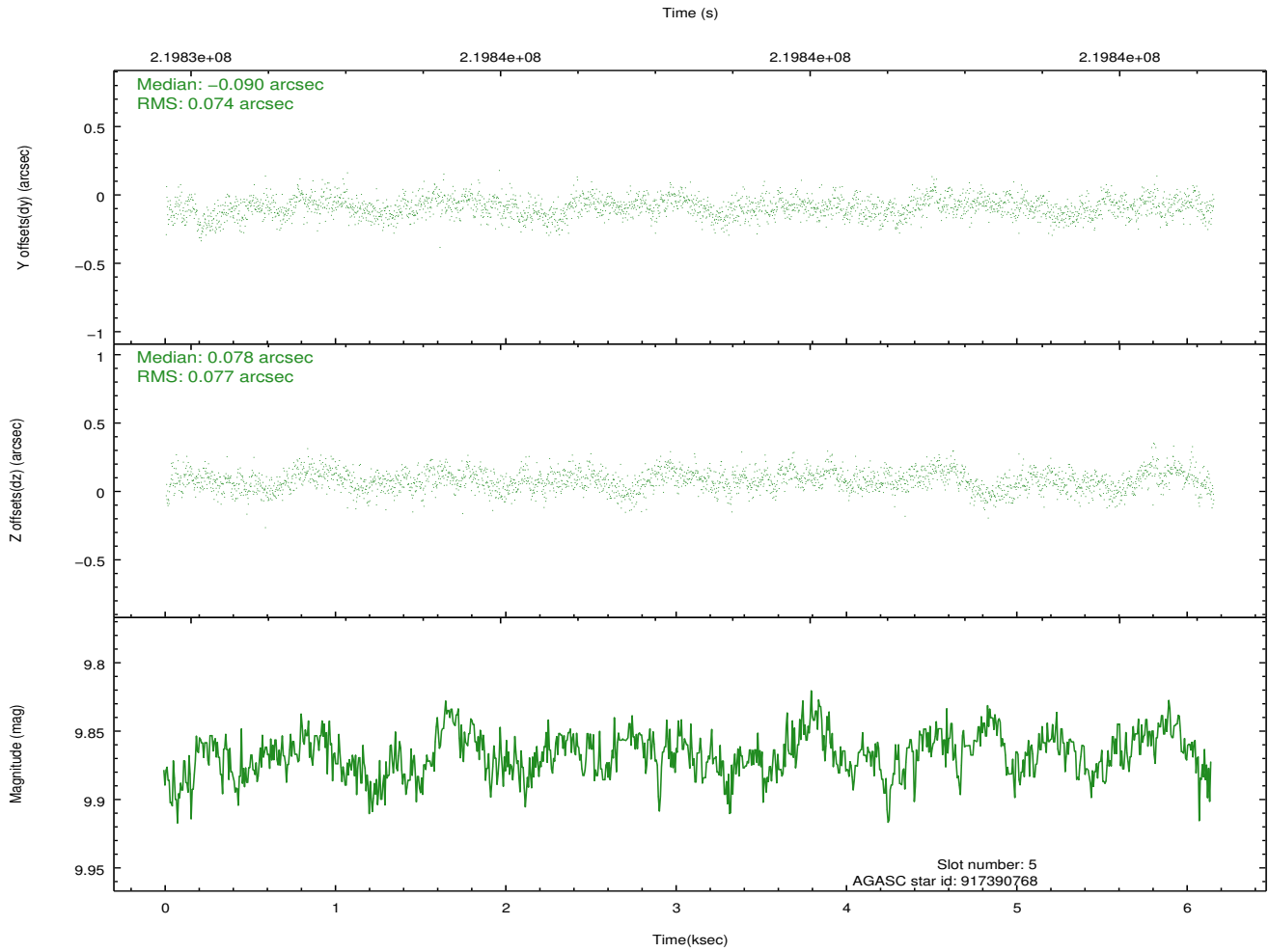
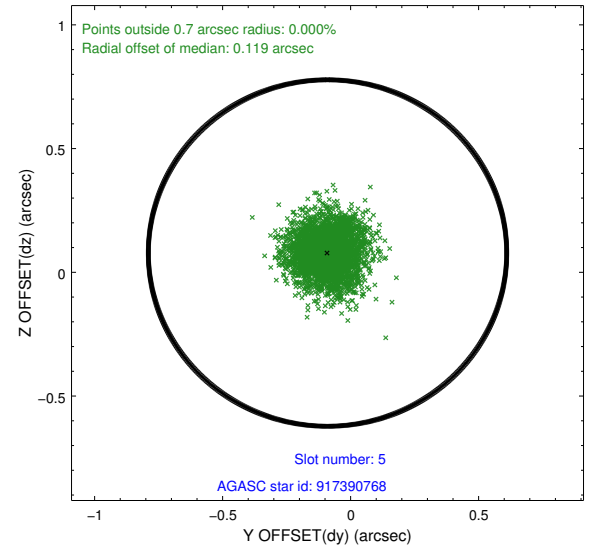
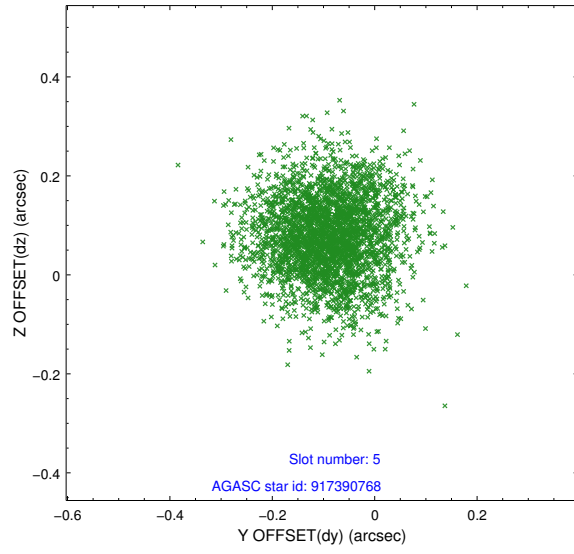
2.4.1 Slot 3



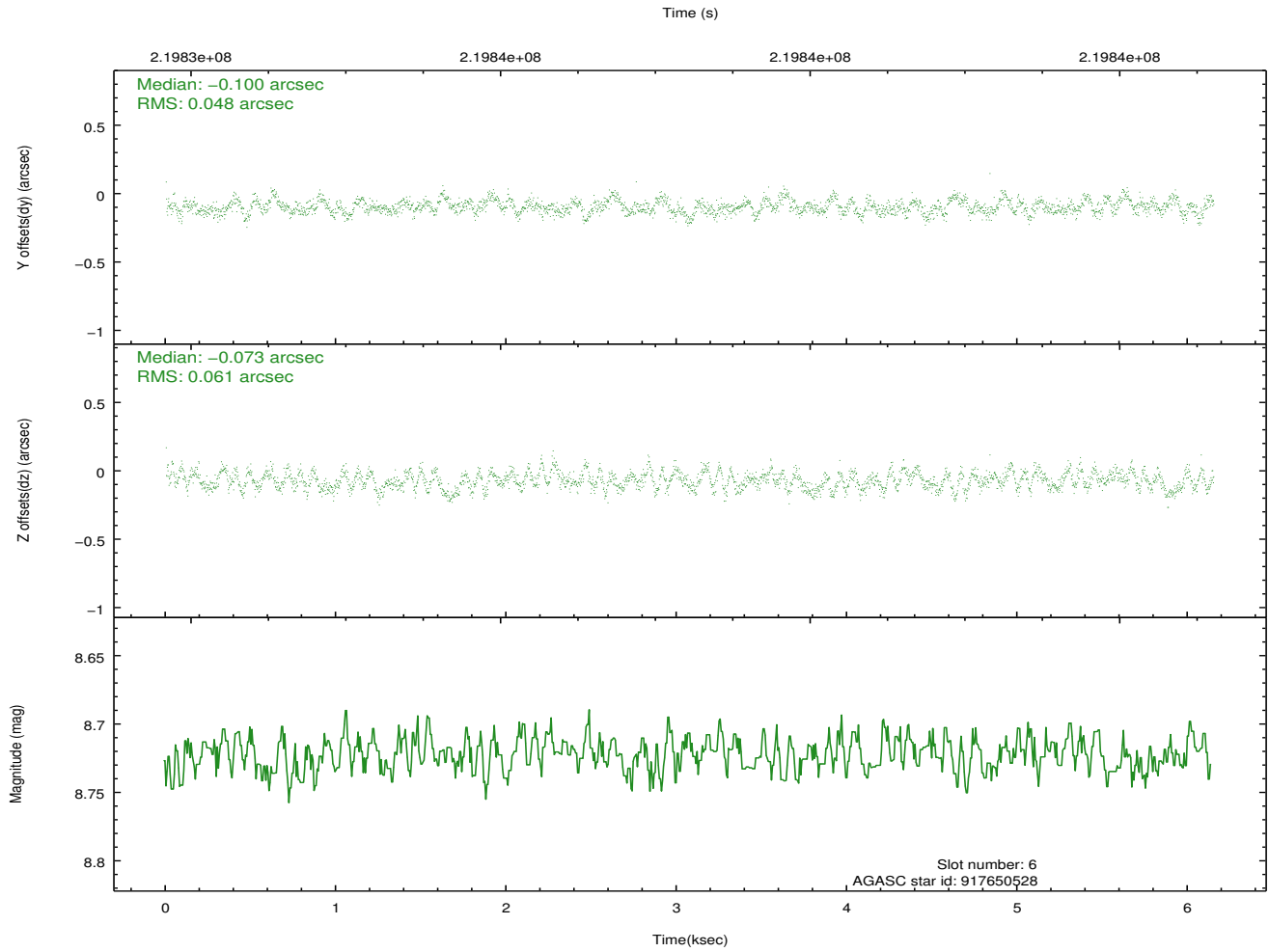
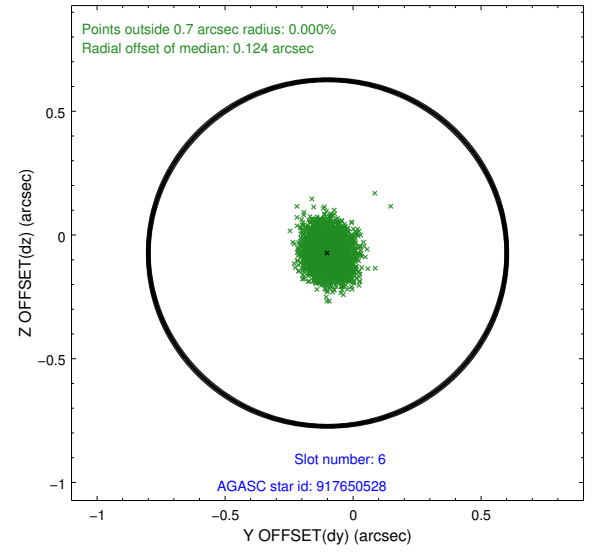
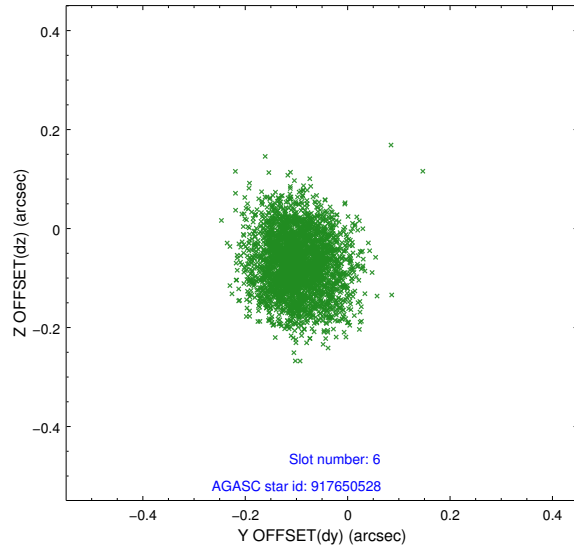
2.4.2 Slot 4



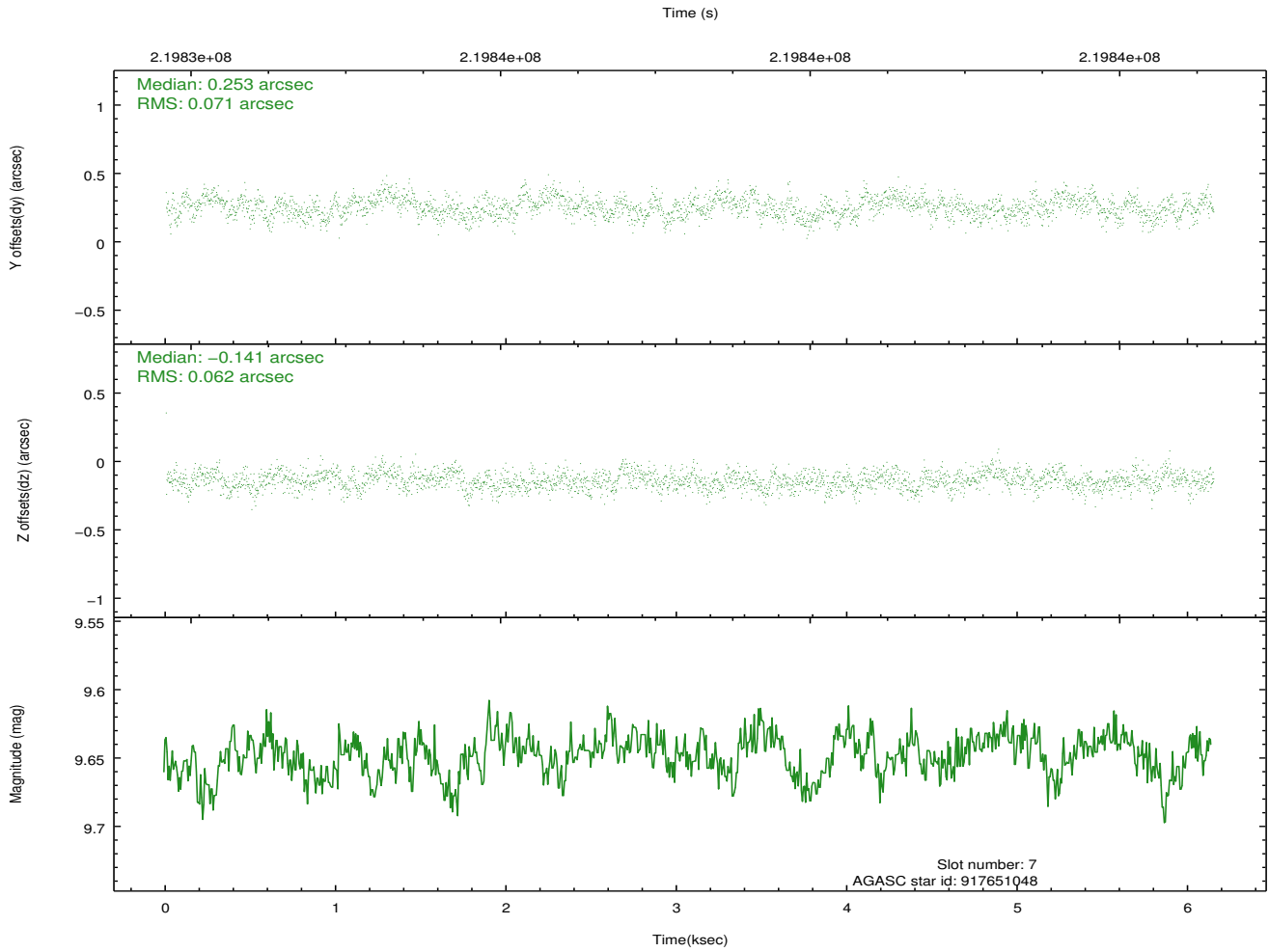
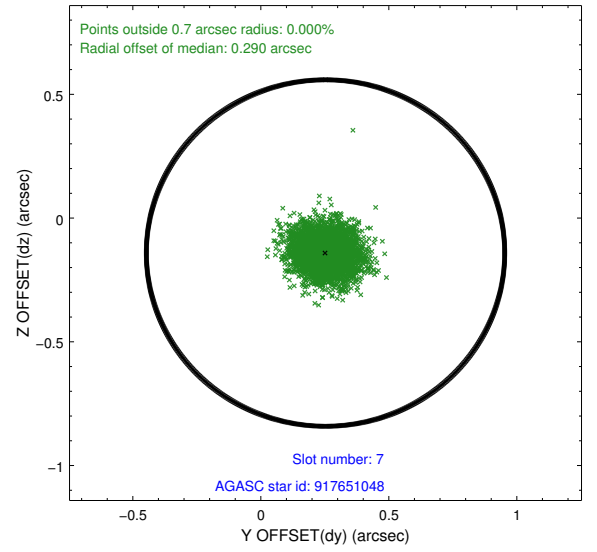
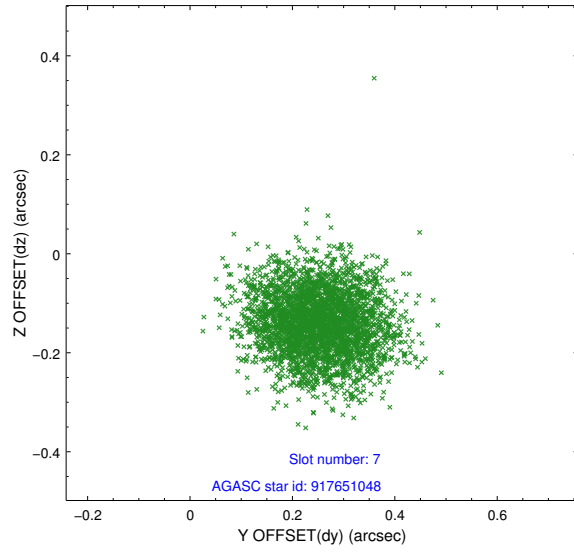
2.4.3 Slot 5



2.4.4 Slot 6

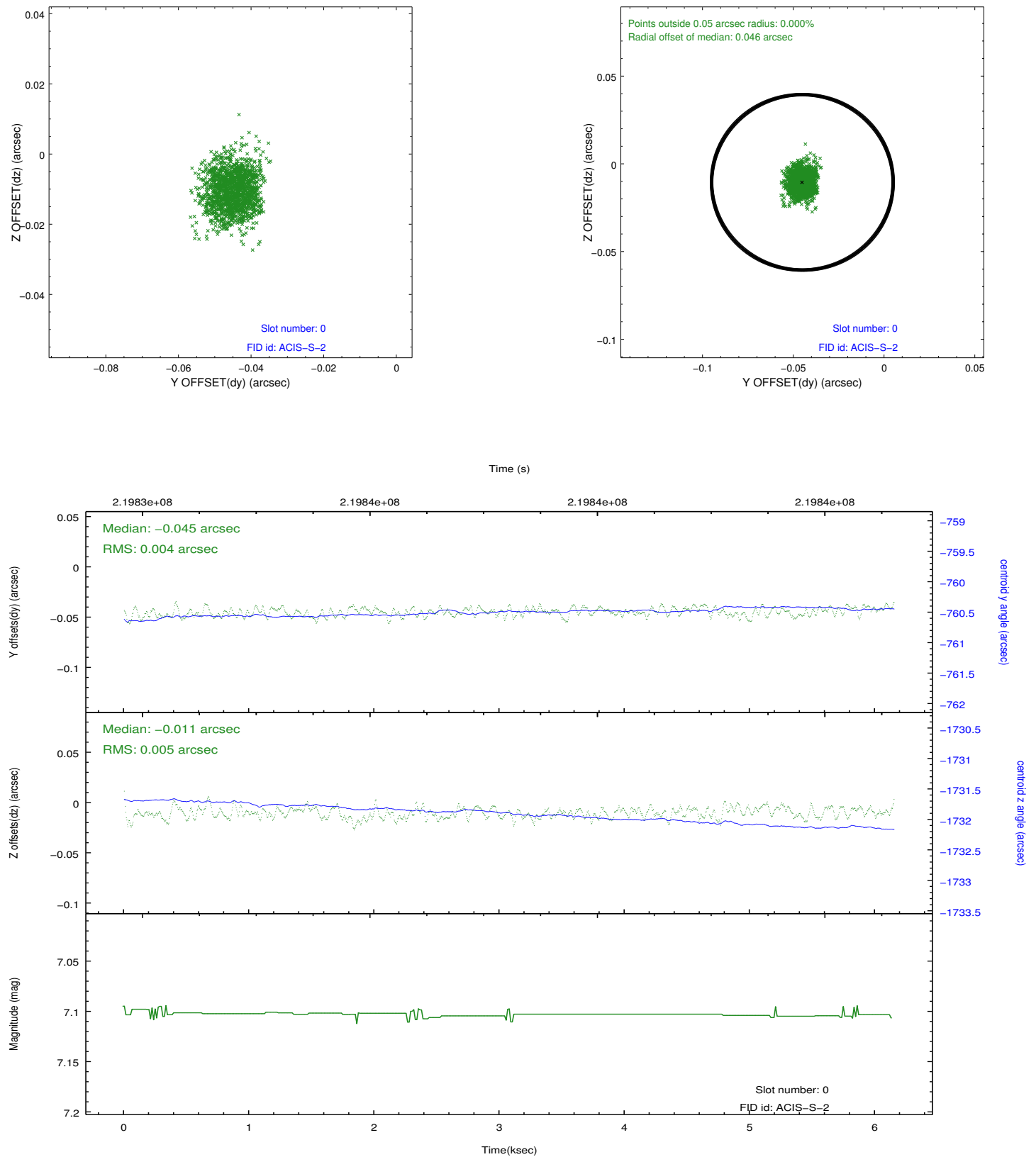


2.4.5 Slot 7

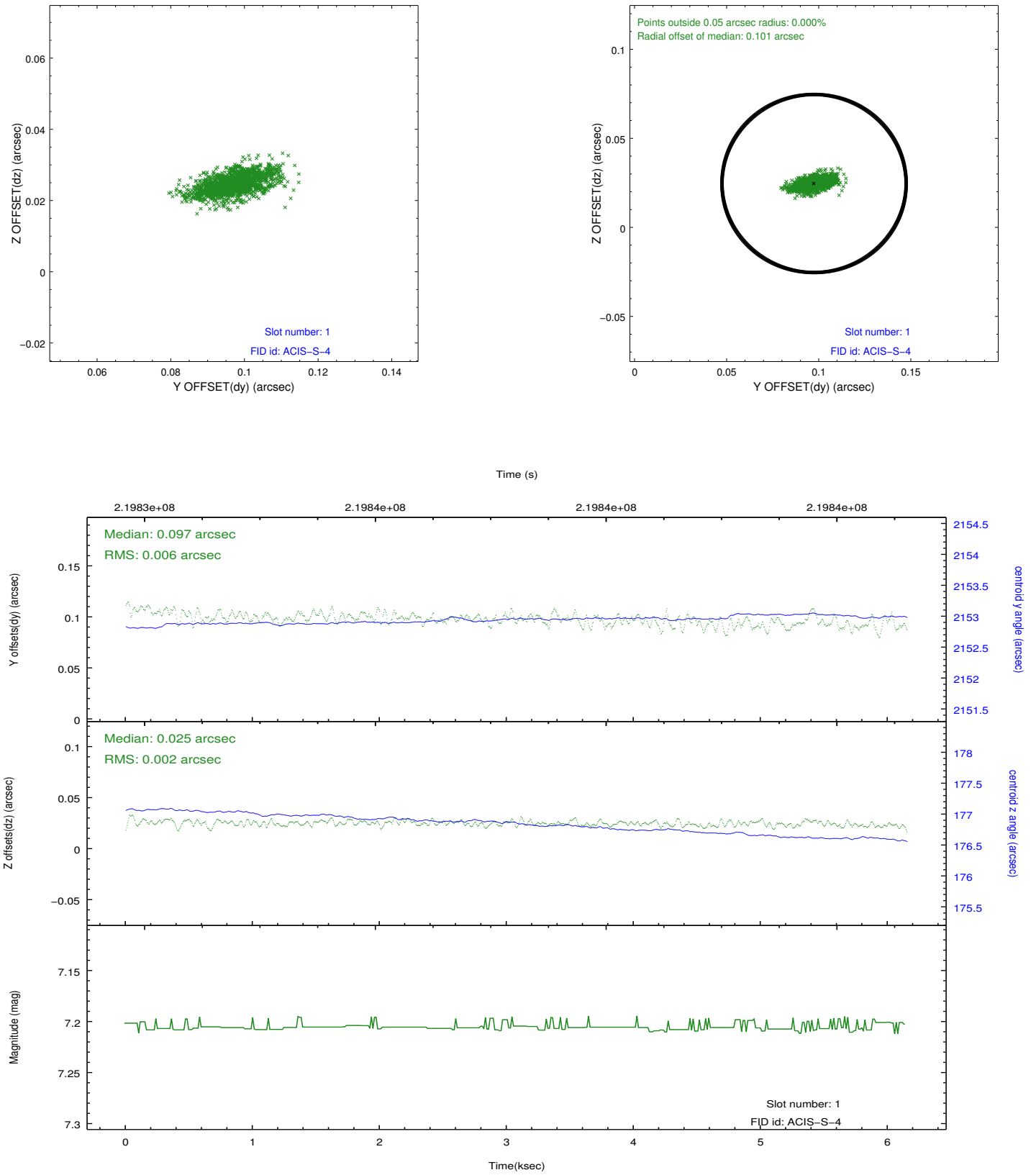


2.5 FID Slots

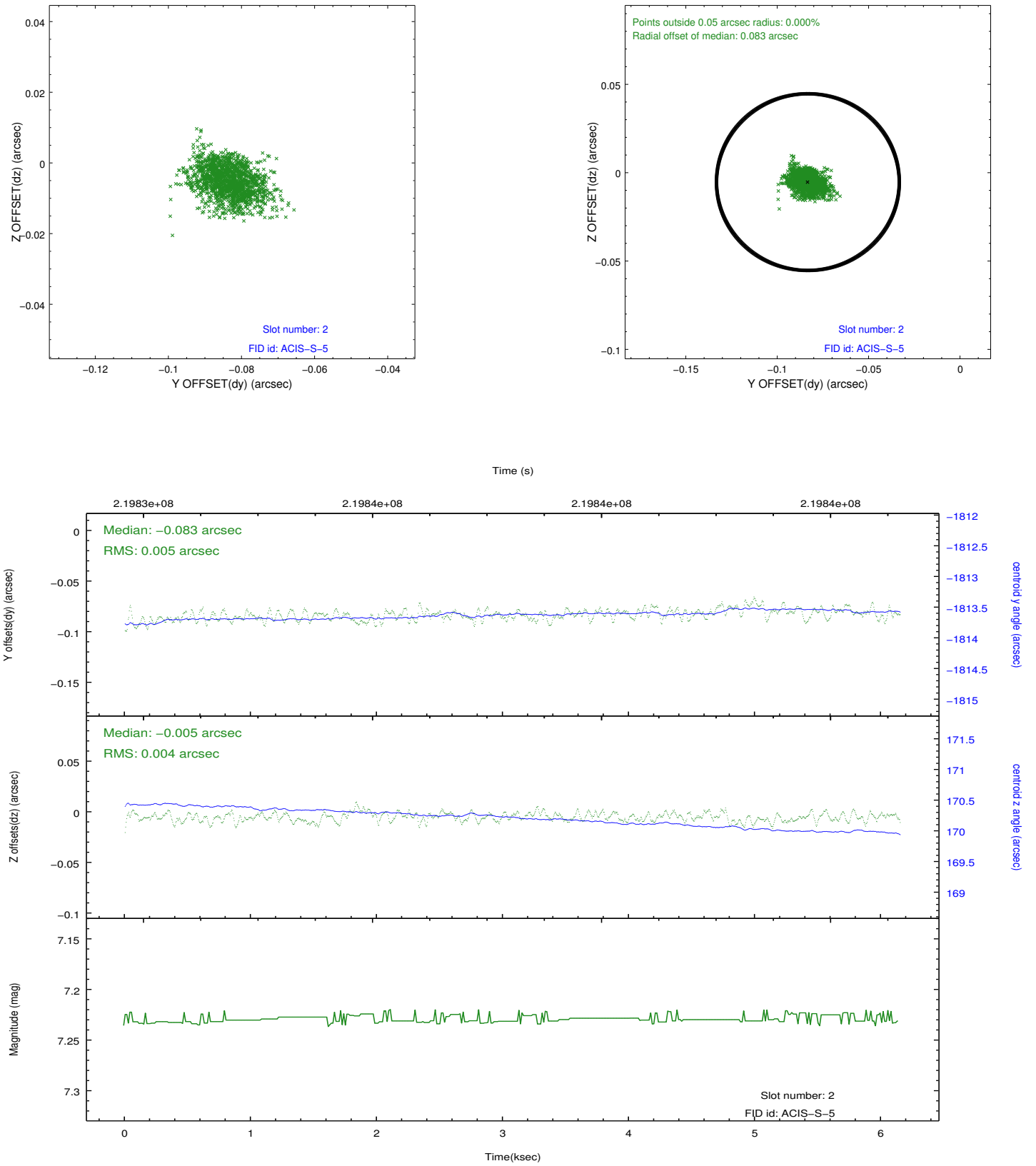
2.5.1 Slot 0



2.5.2 Slot 1



2.5.3 Slot 2



A Summary

A.1 Status

V&V Scientist	Jen Lauer
V&V Date (YYYY-MM-DD)	2013.01.04
V&V Edition	1
V&V Disposition and Status	OK
V&V Charge Time	6.092799

A.2 Comments

Joint Proposal: NOAO