

# V&V Reference Report

## L2 ASCDS Version : 8.5.1

Observation 4536 - L2 Version 3  
Chandra X-Ray Center

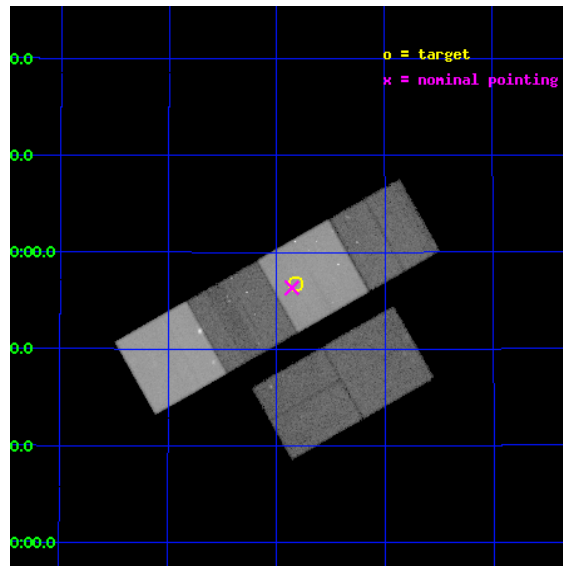
L2 Processing Date : Dec 18 2012

## Contents

<b>1</b>	<b>Front</b>	<b>2</b>
<b>2</b>	<b>OBI</b>	<b>3</b>
2.1	OBI . . . . .	3
2.1.1	Images . . . . .	3
2.1.2	Bias . . . . .	3
2.1.3	Parameters . . . . .	4
2.1.4	Events . . . . .	4
2.2	Compared Parameters . . . . .	5
2.3	Aspect . . . . .	6
2.4	Star Slots . . . . .	9
2.4.1	Slot 3 . . . . .	9
2.4.2	Slot 4 . . . . .	10
2.4.3	Slot 5 . . . . .	11
2.4.4	Slot 6 . . . . .	12
2.4.5	Slot 7 . . . . .	13
2.5	FID Slots . . . . .	14
2.5.1	Slot 0 . . . . .	14
2.5.2	Slot 1 . . . . .	15
2.5.3	Slot 2 . . . . .	16
<b>A</b>	<b>Summary</b>	<b>17</b>
A.1	Status . . . . .	17
A.2	Comments . . . . .	17

# 1 Front

seq_num	300130	Sequence number
obs_id	4536	Observation id
title	Understanding the nature of supersoft X-ray sources	Proposal title
observer	Dr. Jochen Greiner	Principal investigator
object	M31-0041.7+4056	Source name
dtcycle	0	&#160
cycle	P	events from which exps? Prim/Second/Both
ra_targ	10.455	Observer's specified target RA [deg]
dec_targ	40.945278	Observer's specified target Dec [deg]
ra_nom	10.464864852478	Nominal RA [deg]
dec_nom	40.939101396998	Nominal Dec [deg]
roll_nom	330.42156139334	Nominal Roll [deg]
revision	3	Processing version of data
ontime	54940.79979533	Sum of GTIs [s]
livetime	54245.106306943	Livetime [s]
ontime2	54937.558825046	Sum of GTIs [s]
ontime3	54940.79979533	Sum of GTIs [s]
ontime5	54940.79979533	Sum of GTIs [s]
ontime6	54940.79979533	Sum of GTIs [s]
ontime7	54940.79979533	Sum of GTIs [s]
ontime8	54937.558835059	Sum of GTIs [s]
l2events	749781	Number of level 2 events

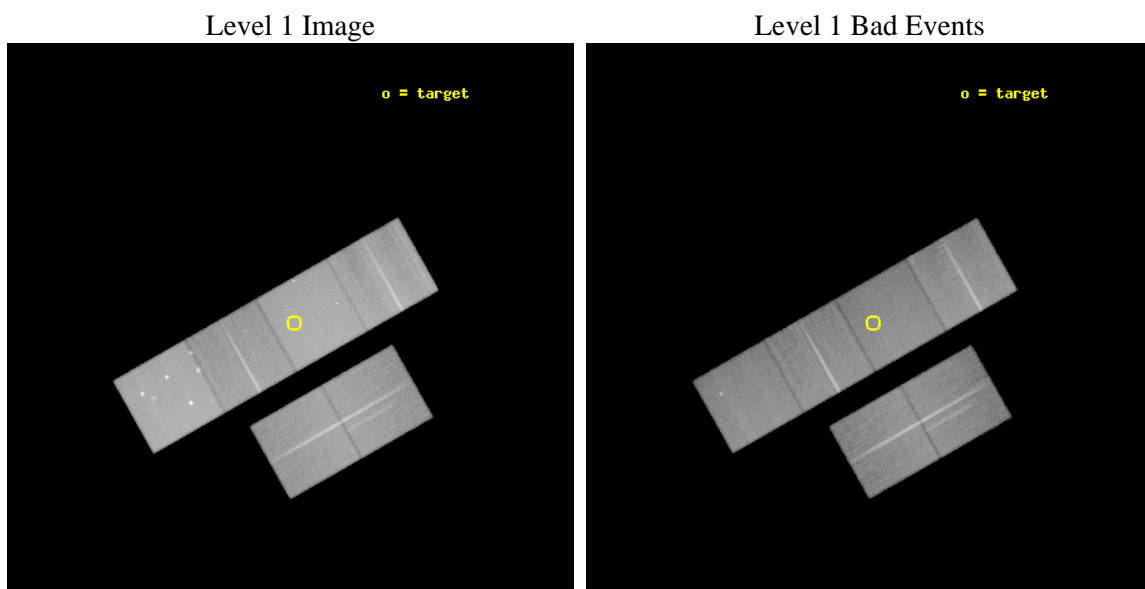




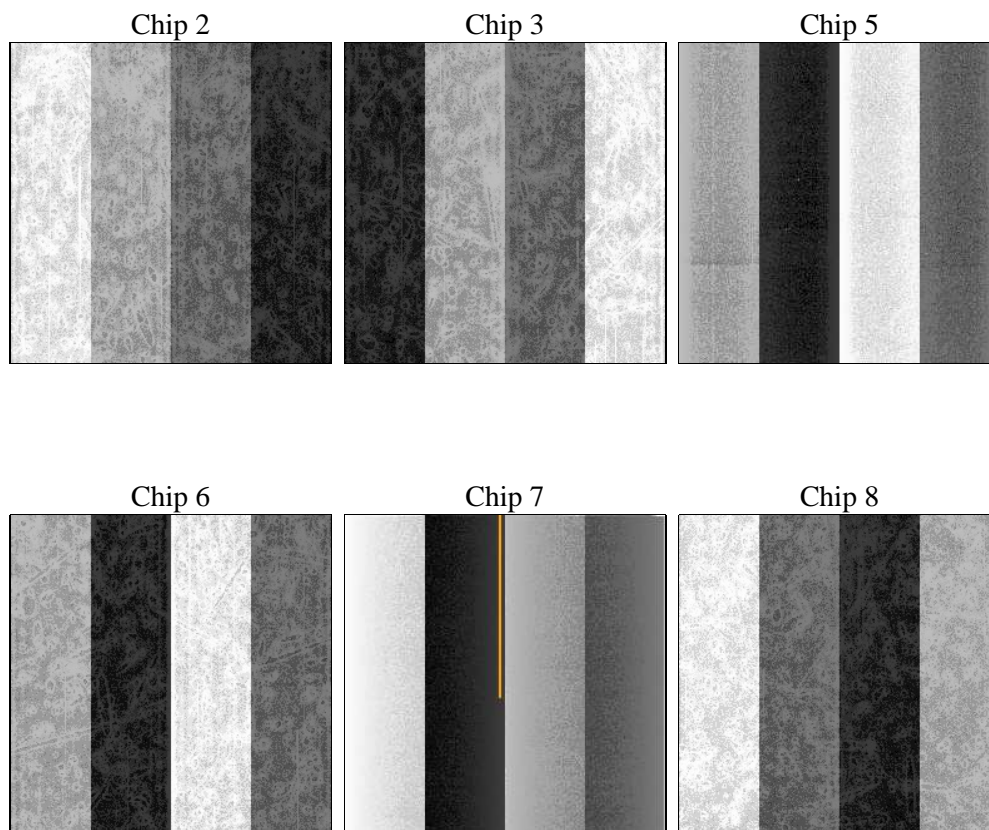
## 2 OBI

### 2.1 OBI

#### 2.1.1 Images



#### 2.1.2 Bias



### 2.1.3 Parameters

obi_num	0	Obi number	sched_exp_time	54800.000000	[s] Scheduled observation exposure time
ascdsver	8.5.1	Processing system revision	ontime	54940.79979533	Sum of GTIs [s]
caldsver	4.5.5	&#160	ontime2	54937.558825046	Sum of GTIs [s]
date	2012-12-18T07:12:58	Date and time of file creation	ontime3	54940.79979533	Sum of GTIs [s]
revision	3	Processing version of data	ontime5	54940.79979533	Sum of GTIs [s]
			ontime6	54940.79979533	Sum of GTIs [s]
			ontime7	54940.79979533	Sum of GTIs [s]
			ontime8	54937.558835059	Sum of GTIs [s]
			l1events	3115139	Number of level 1 events

### 2.1.4 Events

	ccd 2	ccd 3	ccd 5	ccd 6	ccd 7	ccd 8		ccd 2	ccd 3	ccd 5	ccd 6	ccd 7	ccd 8
level 1 events	434673	405958	689322	430710	610974	543502	grade 0 events	24575	23255	55746	24648	26687	41890
rejected events	382600	356103	356355	375786	343633	420865		5%	5%	8%	5%	4%	7%
rejected %	88%	87%	51%	87%	56%	77%	grade 1 events	269	240	2127	234	554	352
								0%	0%	0%	0%	0%	0%
							grade 2 events	11136	9878	95577	11696	54637	26807
								2%	2%	13%	2%	8%	4%
							grade 3 events	4703	4796	14126	4948	24146	13623
								1%	1%	2%	1%	3%	2%
							grade 4 events	4750	4780	13576	4898	24104	12699
								1%	1%	1%	1%	3%	2%
							grade 5 events	16627	18906	47129	19763	54966	26098
								3%	4%	6%	4%	8%	4%
							grade 6 events	8604	8806	164922	10547	146007	31629
								1%	2%	23%	2%	23%	5%
							grade 7 events	364009	335297	296119	353976	279873	390404
								83%	82%	42%	82%	45%	71%

## 2.2 Compared Parameters

Parameter	Planned	Actual	Parameter	Planned	Actual
Instrument	ACIS	ACIS	Obspar format version number	7	7
Detector	ACIS-235678	ACIS-235678	Obspar file type	PREDICTED	ACTUAL
Grating	NONE	NONE	Obspar update status	NONE	UPDATED
Data mode	FAINT	FAINT	Number of optional ACIS chips dropped	0	0
Observation mode	POINTING	POINTING	On-chip summing requested	N	N
[deg] Pointing RA	10.428817	10.46486485247807	Subarray requested	NONE	NONE
[deg] Pointing Dec	40.938523	40.93910139699807	Alternating exposures requested	N	N
[deg] Pointing Roll	330.288549	330.4215613933389	[s] Primary exposure time	0.000000	3.2
[mm] SIM focus pos	-0.684267	-0.6828225247311905			
[mm] SIM defocus	0	0.001444936568705701			
[mm] SIM translation stage pos	-190.132523	-190.1425803651734			
[mm] SIM translation stage offset	0	0.01005778216563158			
[s] Observation start time (MET)	226565323.184000	226563220.80431			
Observation start date	2005-03-07T06:47:39	2005-03-07T06:13:40			
[s] Observation end time (MET)	226620123.184000	226620964.18193			
Observation end date	2005-03-07T22:00:59	2005-03-07T22:16:04			
Read mode	TIMED	TIMED			

## 2.3 Aspect

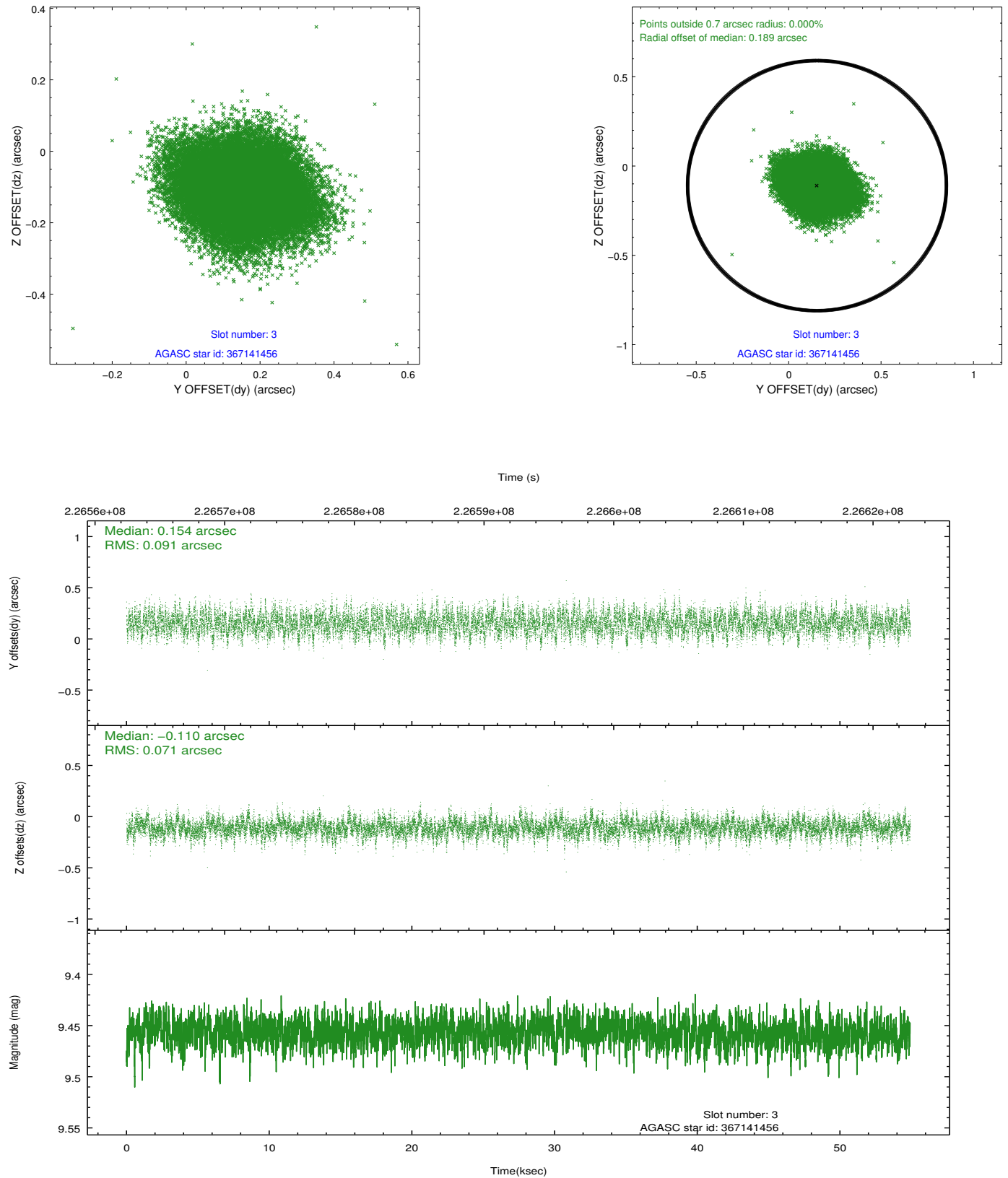


### Slot Statistics

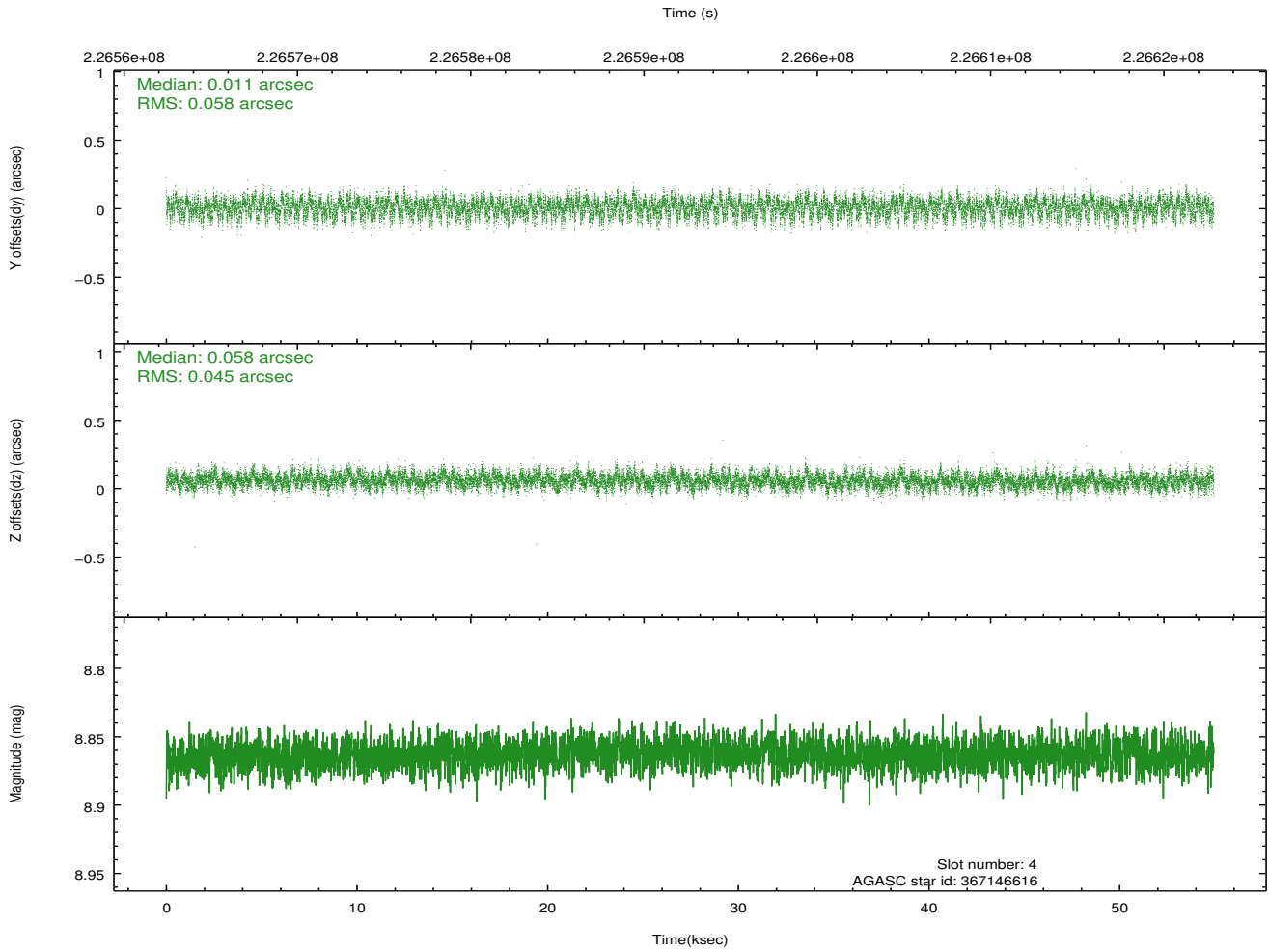
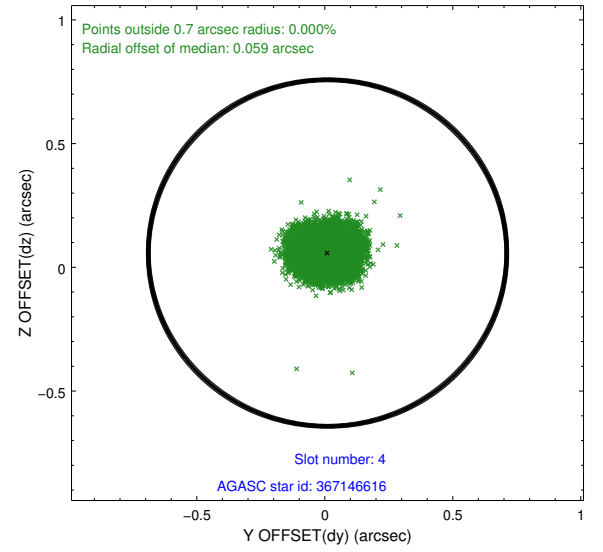
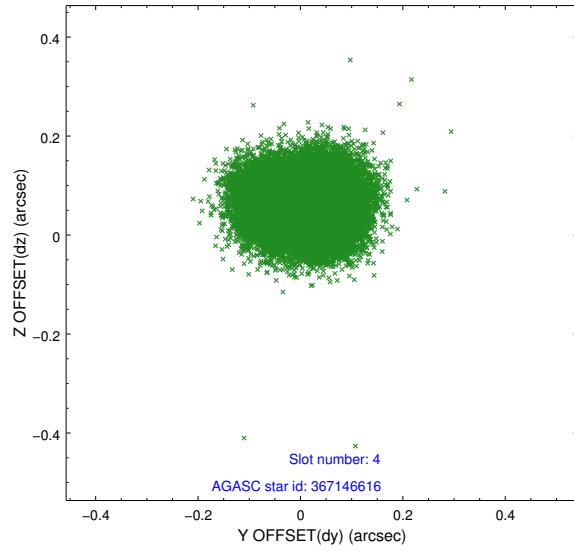
slot	status	id	mag	n_pts	med_dy	med_dz	dr1	dr2	ra	dec	mean_y	mean_z
0	FID	ACIS-S-1	7.18	13401	0.042	-0.081	0.012	0.046	0.000000	0.000000	936.23	-1728.09
1	FID	ACIS-S-5	7.23	13400	-0.055	0.027	0.012	0.018	0.000000	0.000000	-1812.87	169.62
2	FID	ACIS-S-6	7.34	13401	-0.011	0.066	0.011	0.044	0.000000	0.000000	401.79	813.56
3	GUIDE	367141456	9.46	26766	0.154	-0.110	0.123	0.199	10.733182	40.145955	2141.75	-2061.80
4	GUIDE	367146616	8.86	26789	0.011	0.058	0.079	0.125	11.418645	41.190163	1872.62	2129.24
5	GUIDE	367148872	7.22	26736	0.048	-0.003	0.058	0.091	10.505940	40.688258	629.98	-678.34
6	GUIDE	367144424	8.66	26795	-0.161	-0.011	0.066	0.106	10.464515	40.309136	1208.60	-1919.33
7	GUIDE	367139648	8.21	26790	-0.050	0.067	0.062	0.100	11.021290	40.433909	2308.33	-768.22

## 2.4 Star Slots

### 2.4.1 Slot 3

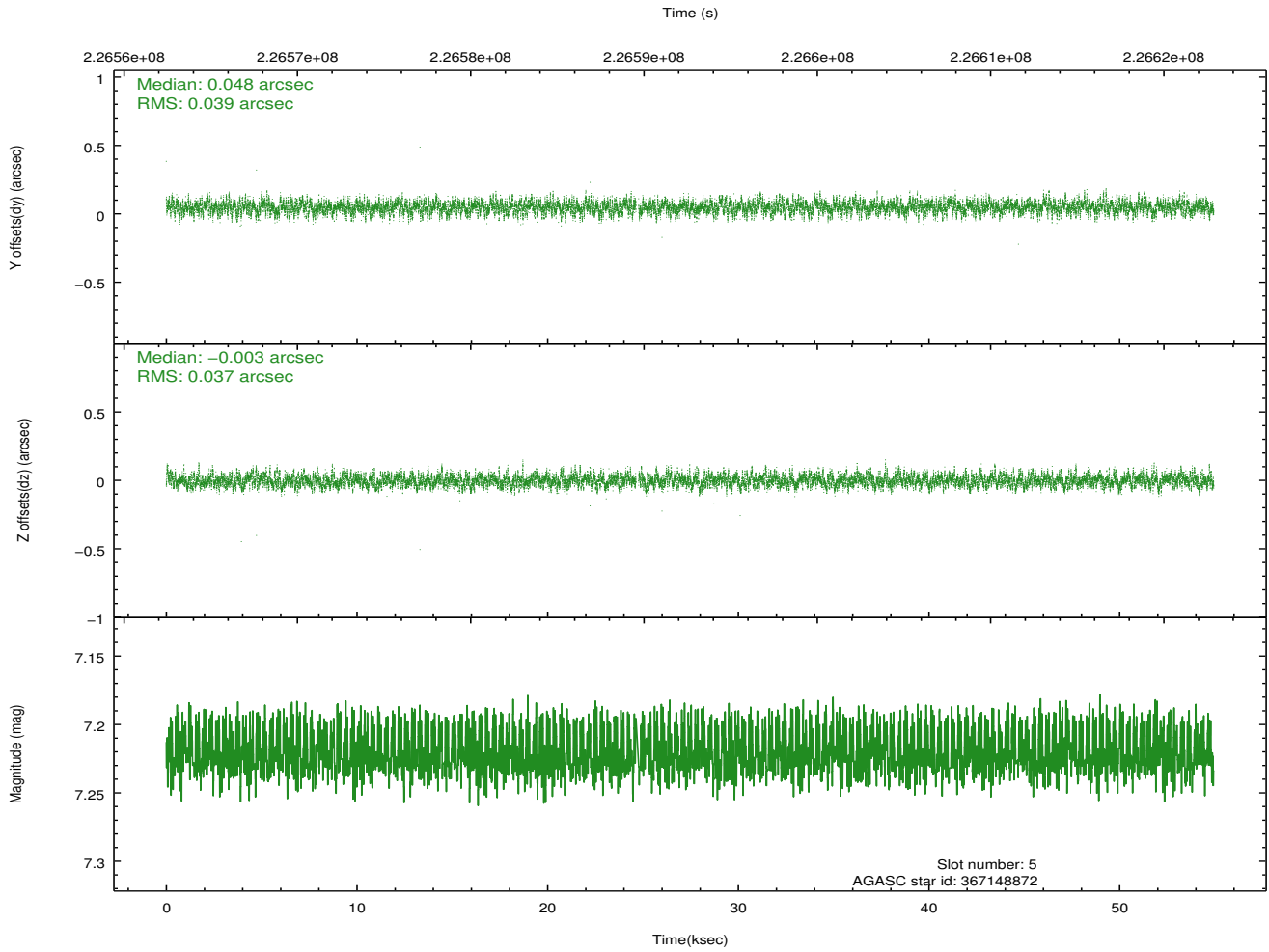
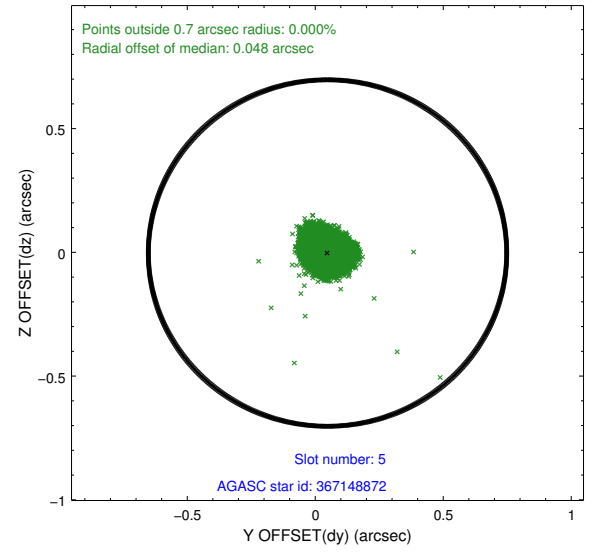
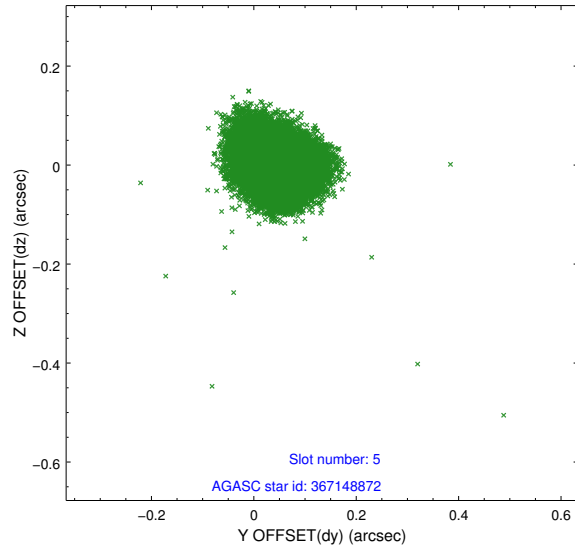


## 2.4.2 Slot 4

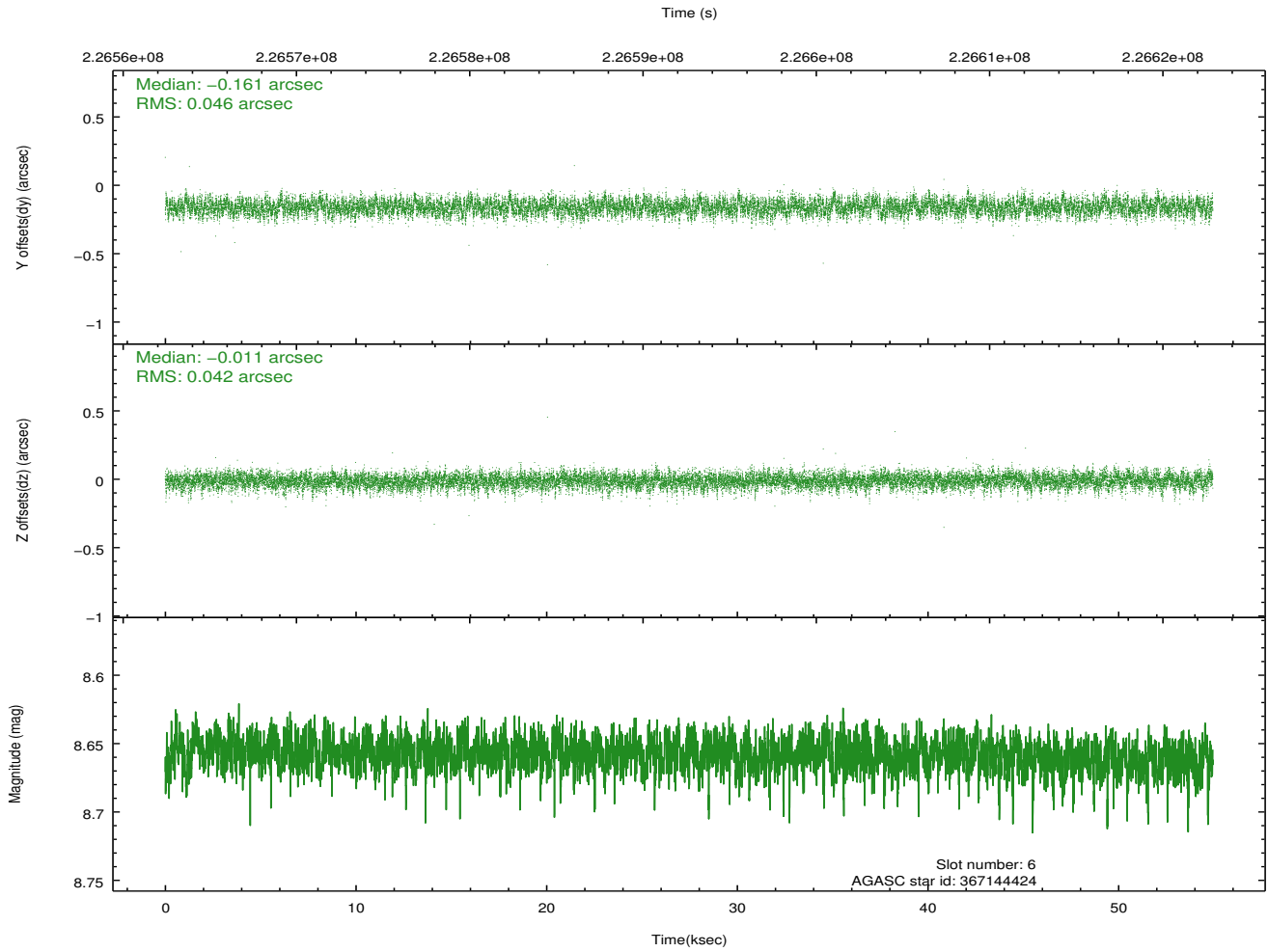
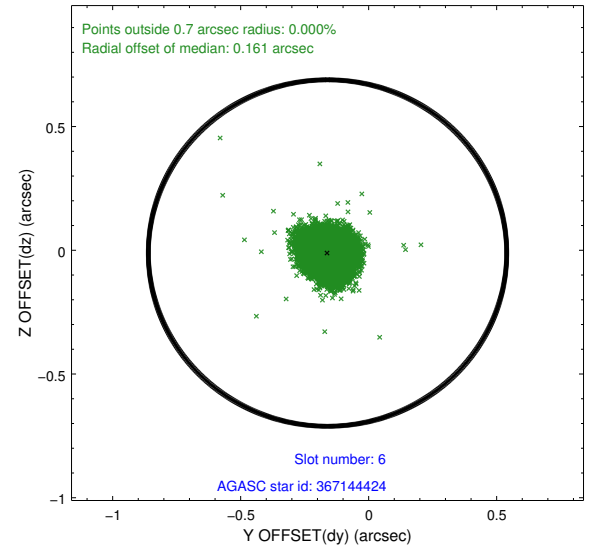
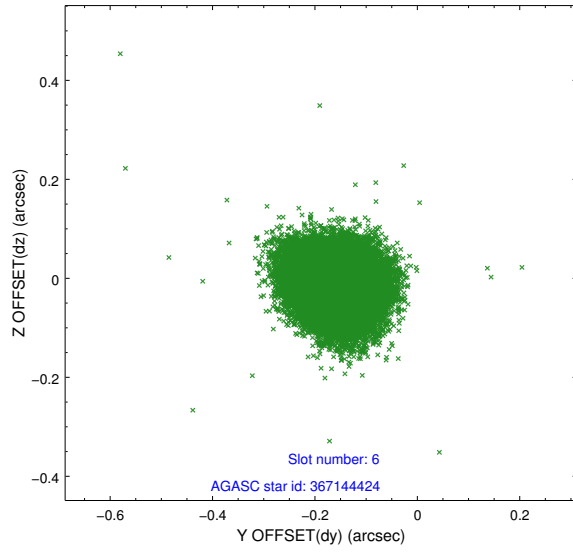




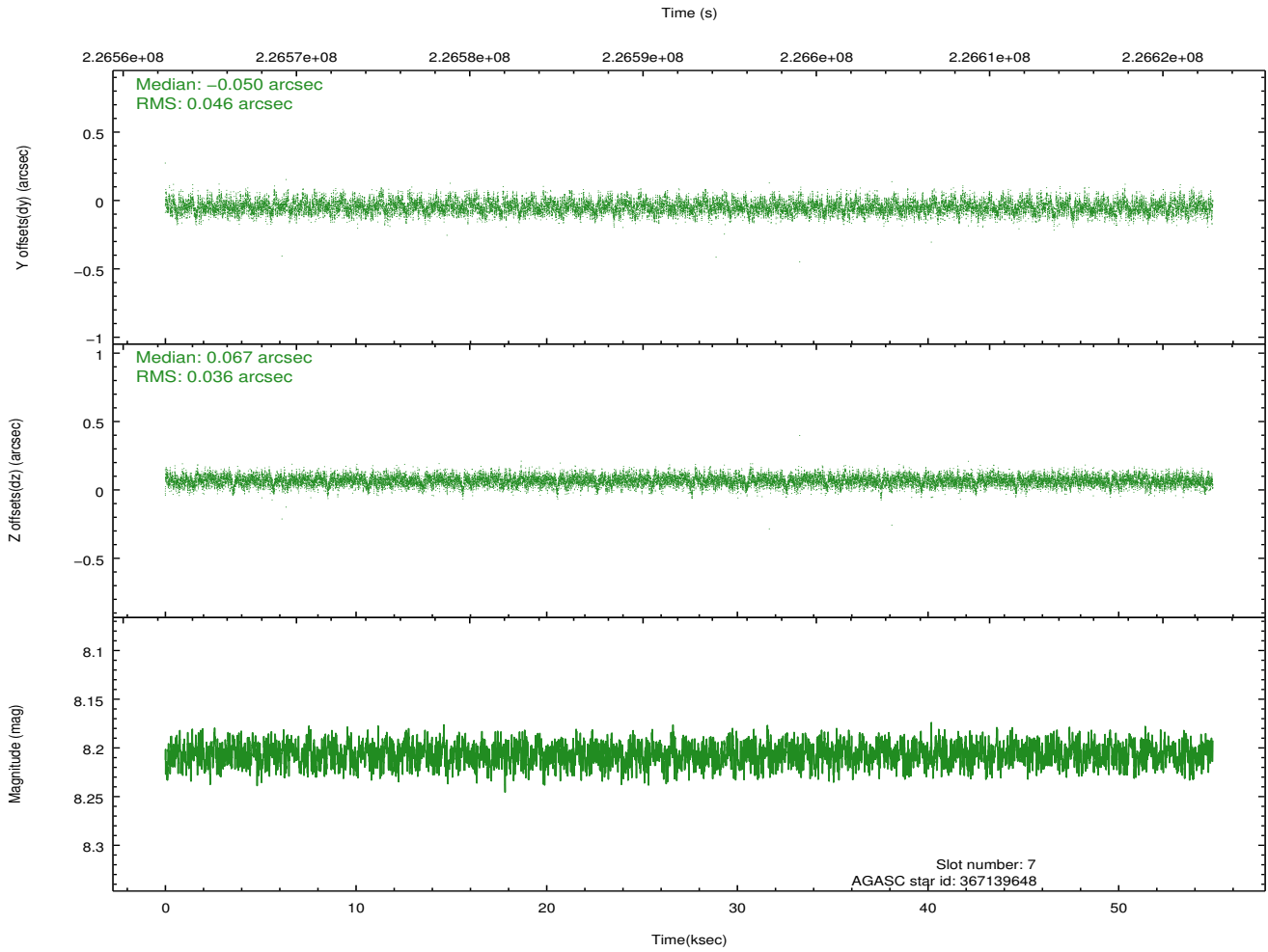
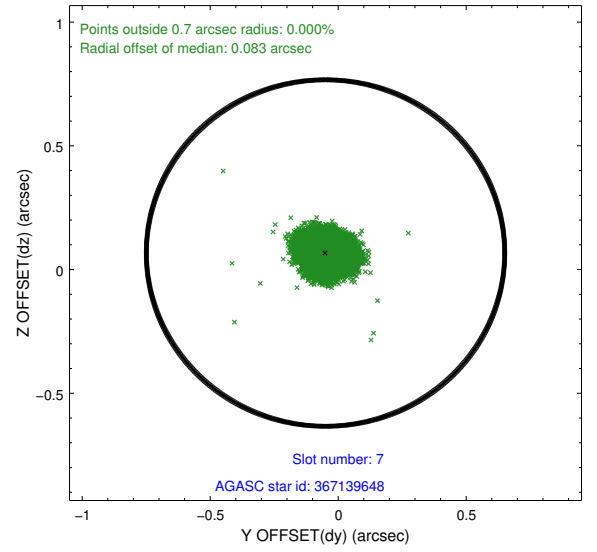
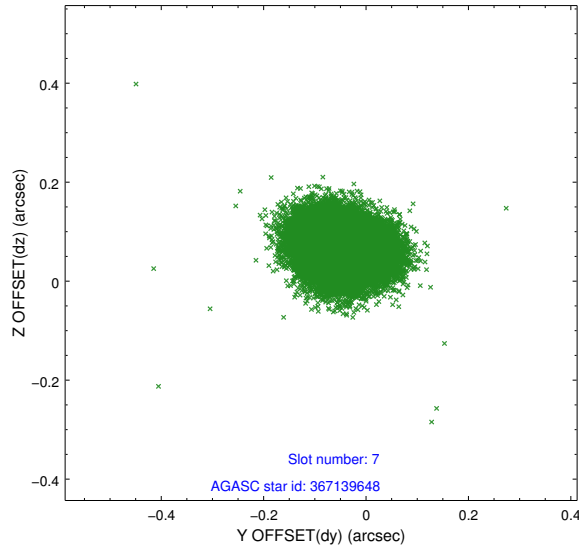
### 2.4.3 Slot 5



## 2.4.4 Slot 6

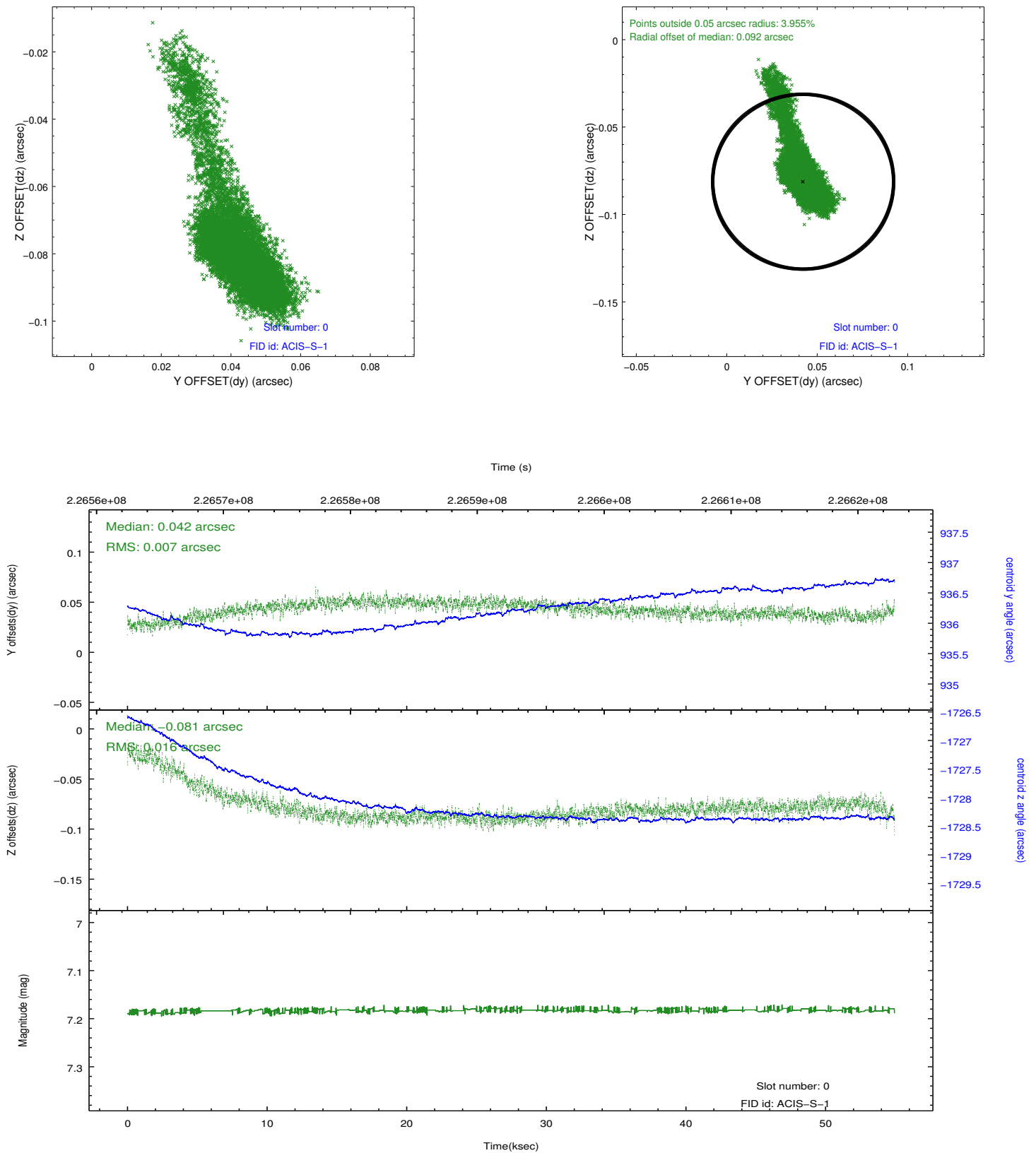


## 2.4.5 Slot 7

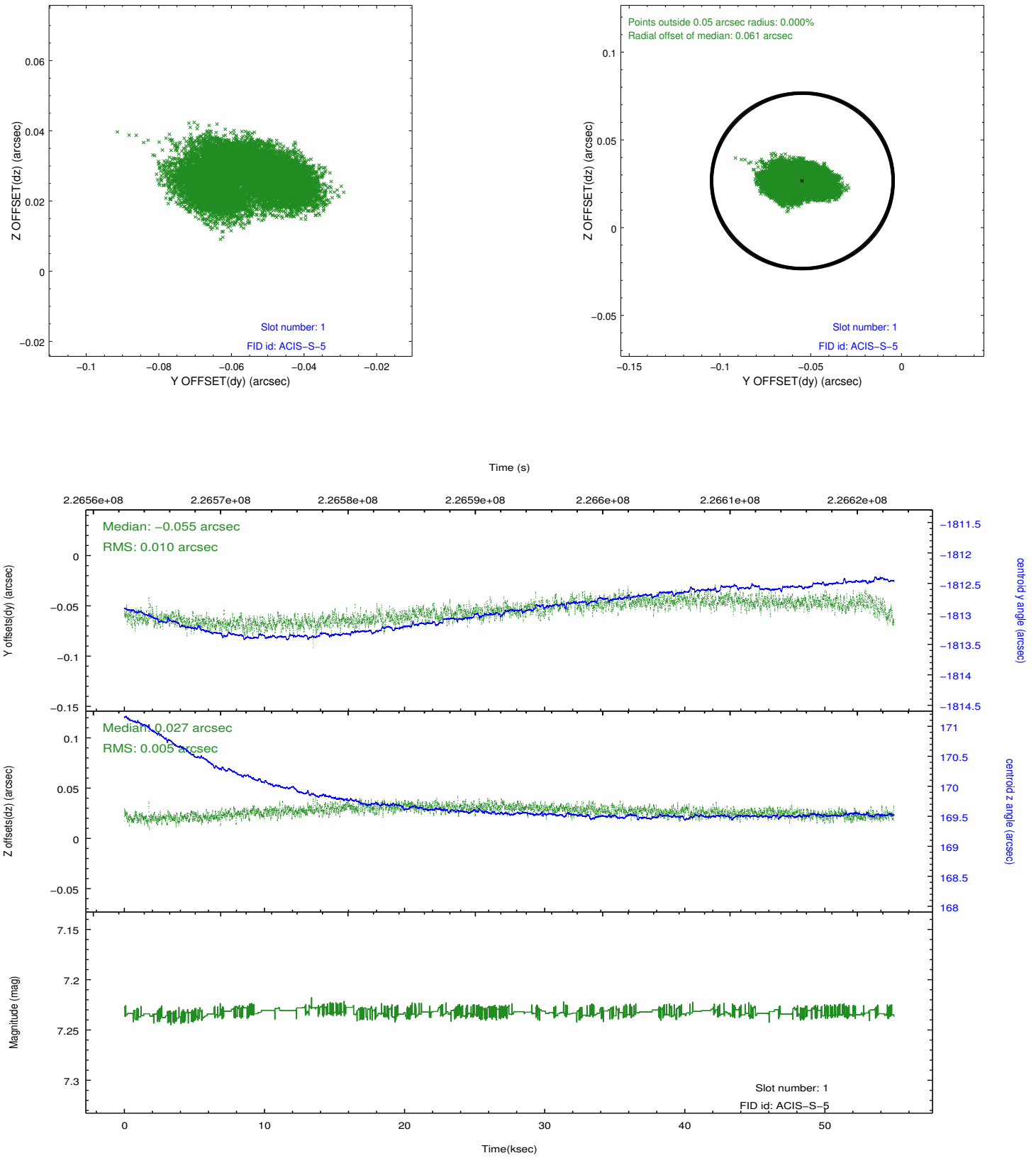


## 2.5 FID Slots

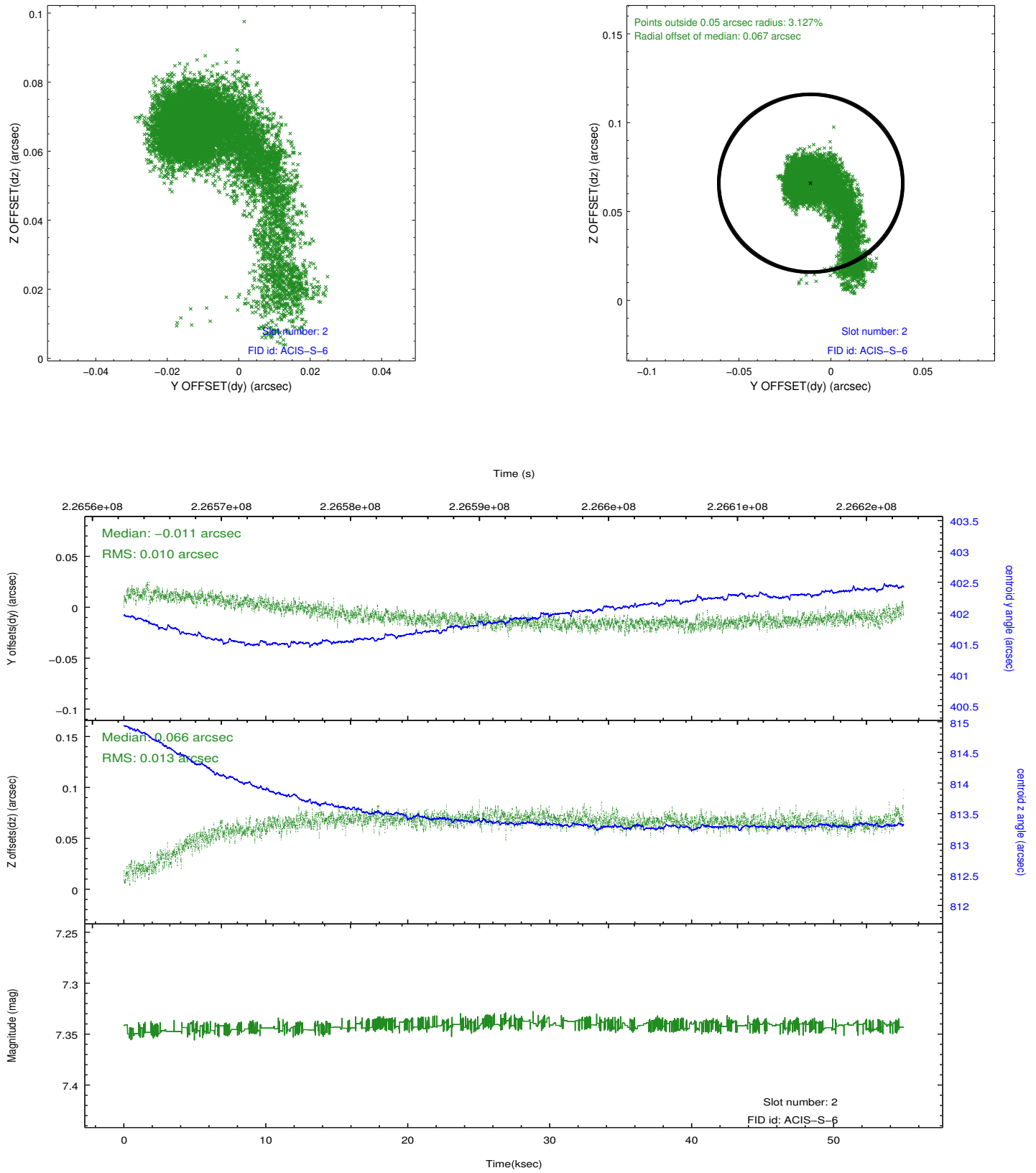
### 2.5.1 Slot 0



## 2.5.2 Slot 1



### 2.5.3 Slot 2



## A Summary

### A.1 Status

V&V Scientist	Jen Lauer
V&V Date (YYYY-MM-DD)	2013.01.11
V&V Edition	1
V&V Disposition and Status	OK
V&V Charge Time	54.94079

### A.2 Comments