

V&V Reference Report

L2 ASCDS Version : 8.4.5

Observation 4466 - L2 Version 3
Chandra X-Ray Center

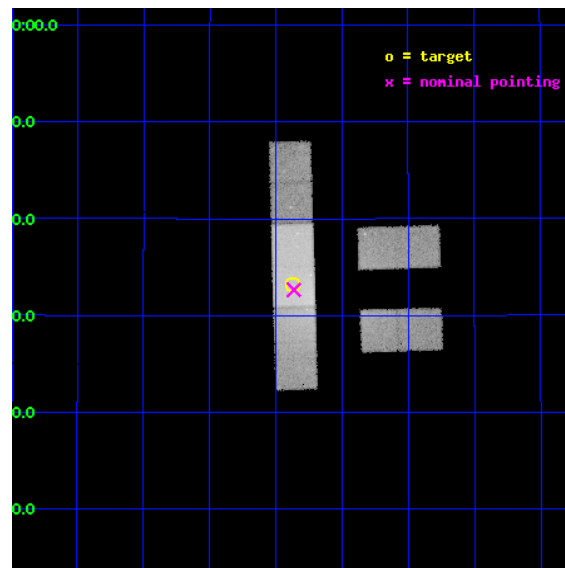
L2 Processing Date : Nov 10 2012

Contents

1	Front	2
2	OBI	3
2.1	OBI	3
2.1.1	Images	3
2.1.2	Bias	3
2.1.3	Parameters	4
2.1.4	Events	4
2.2	Compared Parameters	5
2.3	Aspect	6
2.4	Star Slots	9
2.4.1	Slot 3	9
2.4.2	Slot 4	10
2.4.3	Slot 5	11
2.4.4	Slot 6	12
2.4.5	Slot 7	13
2.5	FID Slots	14
2.5.1	Slot 0	14
2.5.2	Slot 1	15
2.5.3	Slot 2	16
A	Summary	17
A.1	Status	17
A.2	Comments	17

1 Front

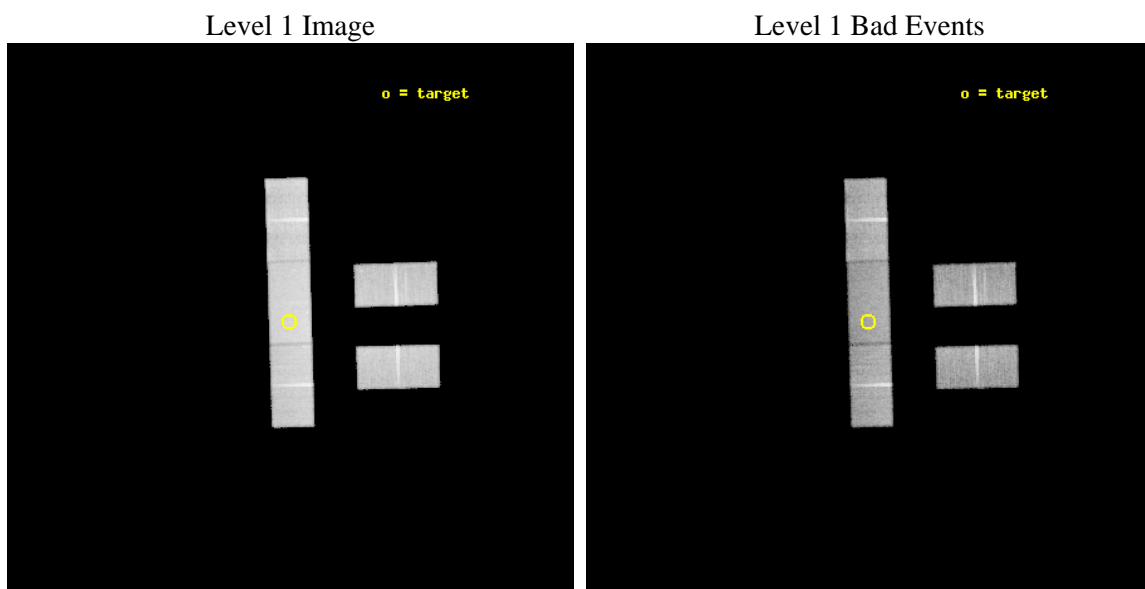
seq_num	100049	Sequence number
obs_id	4466	Observation id
title	SEARCH FOR X-RAYS FROM SATURNIAN SYSTEM	Proposal title
observer	DR. J WAITE	Principal investigator
object	SATURN	Source name
dtcycle	0	
cycle	P	events from which exps? Prim/Second/Both
ra_targ	98.84301	Observer's specified target RA [deg]
dec_targ	22.55375	Observer's specified target Dec [deg]
ra_nom	98.840879436471	Nominal RA [deg]
dec_nom	22.544267372489	Nominal Dec [deg]
roll_nom	268.35874623187	Nominal Roll [deg]
revision	3	Processing version of data
ontime	38273.717731208	Sum of GTIs [s]
livetime	37371.525147643	Livetime [s]
ontime2	38275.458731413	Sum of GTIs [s]
ontime3	38273.717721224	Sum of GTIs [s]
ontime6	38273.717731208	Sum of GTIs [s]
ontime7	38273.717731208	Sum of GTIs [s]
ontime8	38273.717691362	Sum of GTIs [s]
l2events	177991	Number of level 2 events



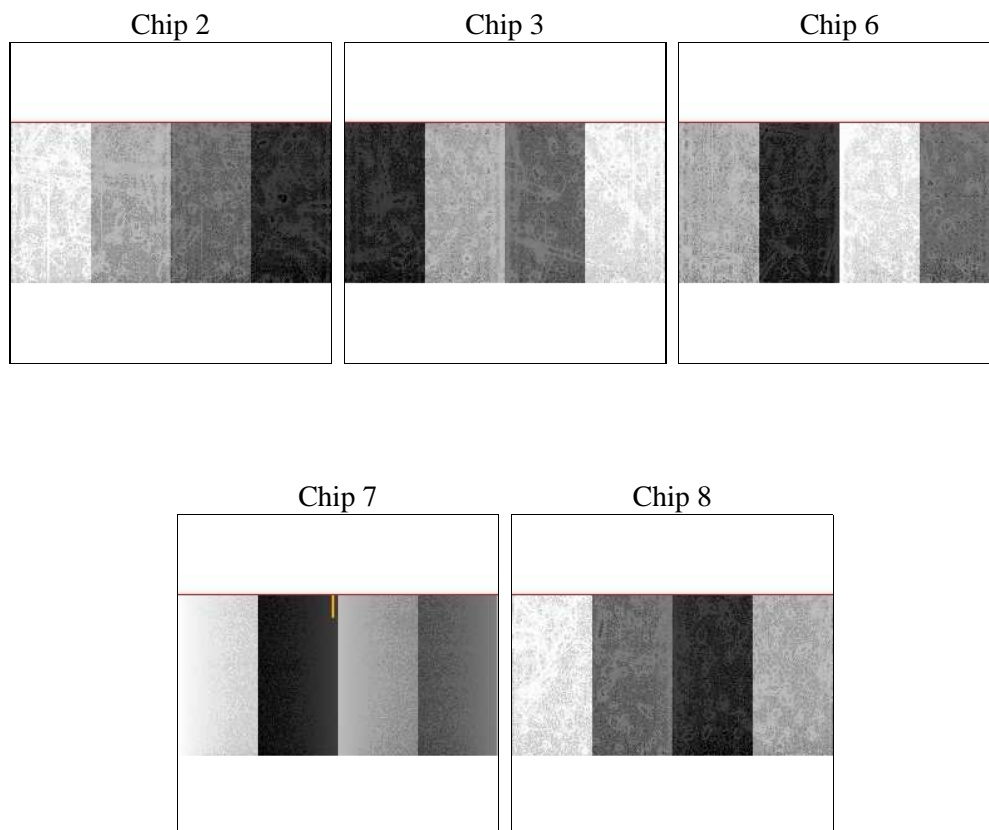
2 OBI

2.1 OBI

2.1.1 Images



2.1.2 Bias



2.1.3 Parameters

obi_num	0	Obi number	sched_exp_time	37819.587000	[s] Scheduled observation exposure time
ascdsver	8.4.5	Processing system revision	ontime	38273.717731208	Sum of GTIs [s]
caldbver	4.5.2	 	ontime2	38275.458731413	Sum of GTIs [s]
date	2012-11-10T22:47:05	Date and time of file creation	ontime3	38273.717721224	Sum of GTIs [s]
revision	3	Processing version of data	ontime6	38273.717731208	Sum of GTIs [s]
			ontime7	38273.717731208	Sum of GTIs [s]
			ontime8	38273.717691362	Sum of GTIs [s]
			l1events	802410	Number of level 1 events

2.1.4 Events

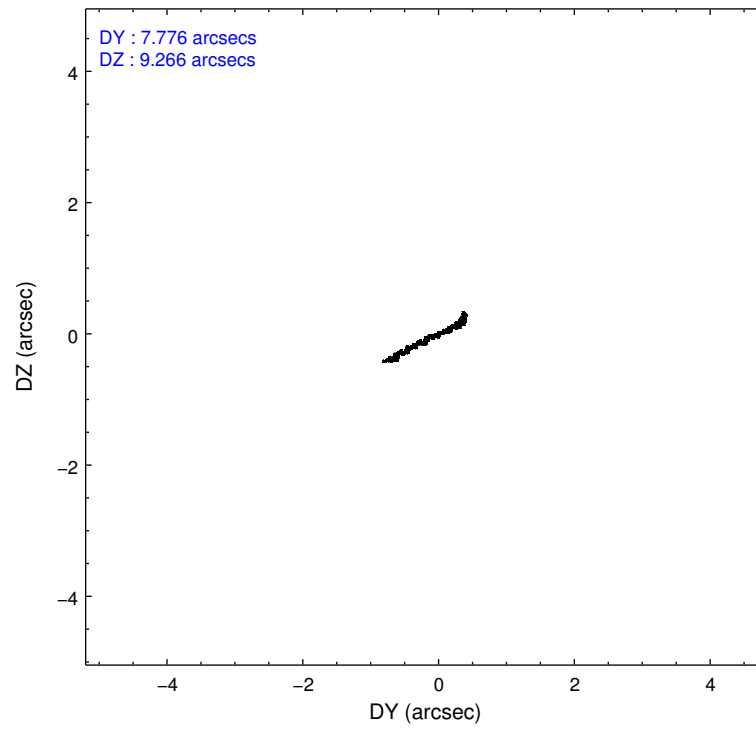
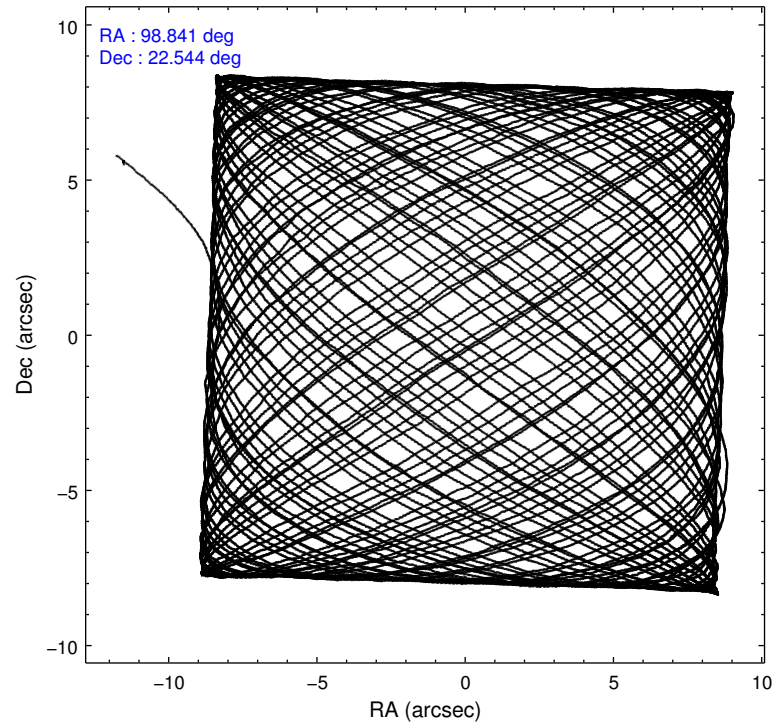
	ccd 2	ccd 3	ccd 6	ccd 7	ccd 8
level 1 events	135123	136746	159472	194586	176483
rejected events	113611	116624	122205	101649	139970
rejected %	84%	85%	76%	52%	79%

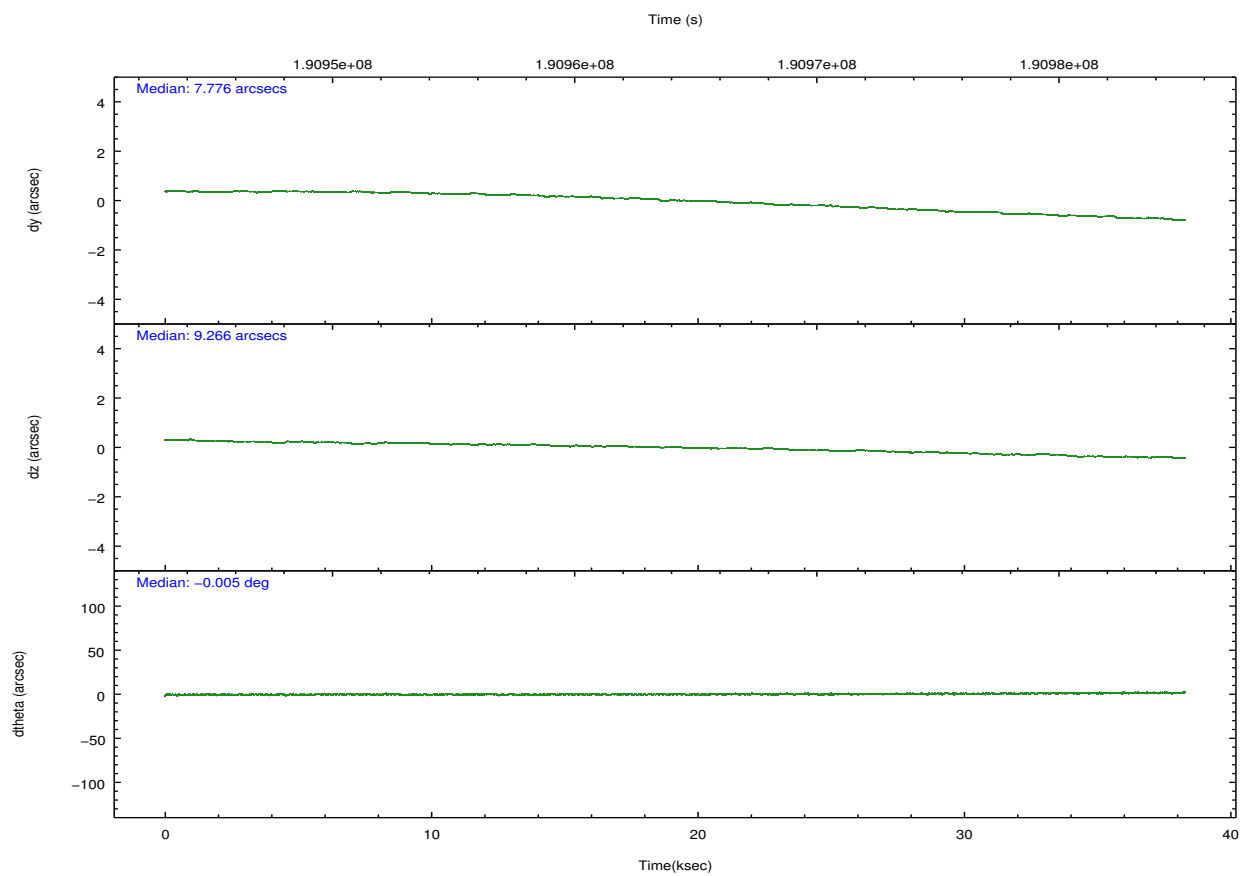
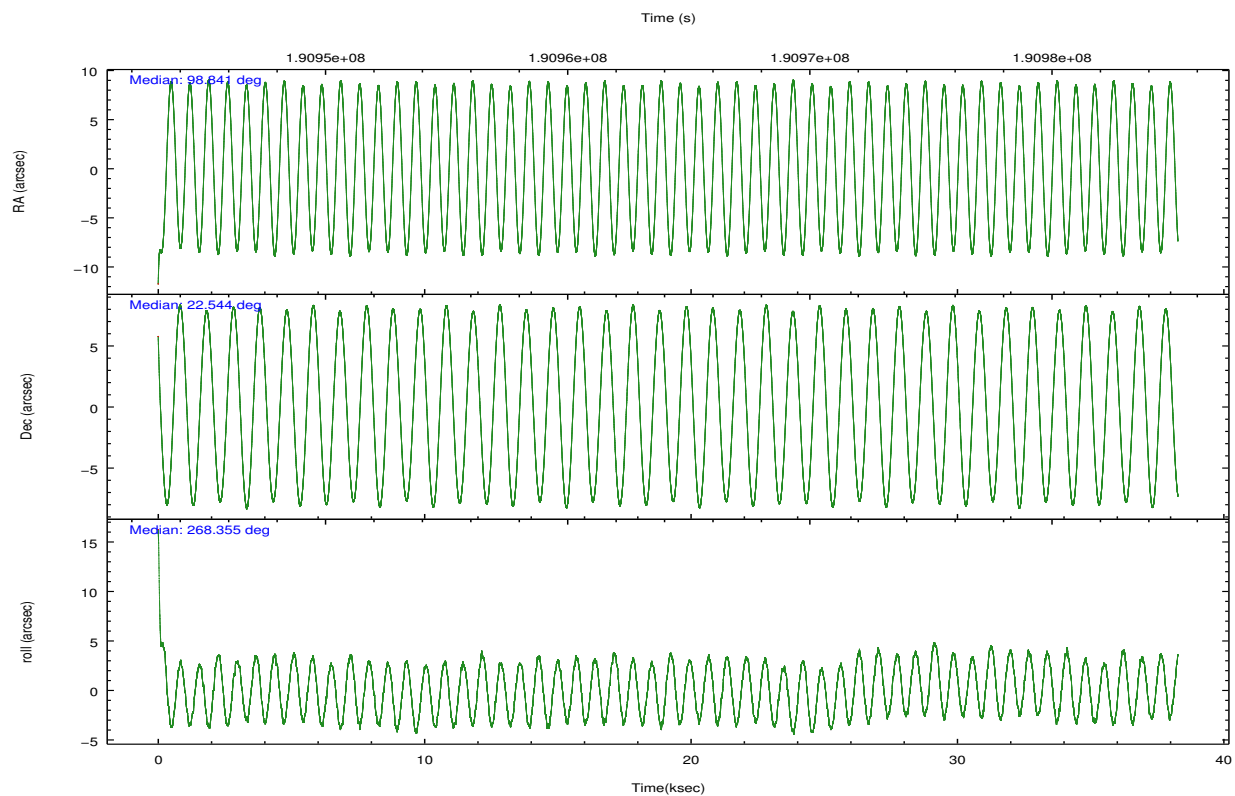
	ccd 2	ccd 3	ccd 6	ccd 7	ccd 8
grade 0 events	11478	10059	23126	11960	12275
	8%	7%	14%	6%	6%
grade 1 events	65	62	83	209	71
	0%	0%	0%	0%	0%
grade 2 events	3575	3409	5416	19897	7505
	2%	2%	3%	10%	4%
grade 3 events	1951	1945	2514	9301	3923
	1%	1%	1%	4%	2%
grade 4 events	1945	1953	2571	9216	3640
	1%	1%	1%	4%	2%
grade 5 events	4866	5664	6104	16877	7472
	3%	4%	3%	8%	4%
grade 6 events	2581	2766	3670	42619	9234
	1%	2%	2%	21%	5%
grade 7 events	108662	110888	115988	84507	132363
	80%	81%	72%	43%	75%

2.2 Compared Parameters

Parameter	Planned	Actual	Parameter	Planned	Actual
Instrument	ACIS	ACIS	Obspar format version number	7	7
Detector	ACIS-23678	ACIS-23678	Obspar file type	PREDICTED	ACTUAL
Grating	NONE	NONE	Obspar update status	NONE	UPDATED
Data mode	VFAINT	VFAINT	Number of optional ACIS chips dropped	0	0
Observation mode	POINTING	POINTING	On-chip summing requested	N	N
[deg] Pointing RA	98.826527	98.84087943647077	Subarray requested	CUSTOM	1/2
[deg] Pointing Dec	22.568065	22.54426737248913	Subarray start row	257	257
[deg] Pointing Roll	268.207626	268.3587462318695	Subarray row count	512	512
[s] Window start time (MET)	190684864.184000	190684864.184000	Alternating exposures requested	N	N
[s] Window stop time (MET)	191203264.184000	191203264.184000	[s] Primary exposure time	0.000000	1.7
[mm] SIM focus pos	-0.684267	-0.6828225247311905			
[mm] SIM defocus	0	0.001444936568705701			
[mm] SIM translation stage pos	-190.132523	-190.1425803651734			
[mm] SIM translation stage offset	0	0.01005778216563158			
[s] Observation start time (MET)	190945464.184000	190944366.20696			
Observation start date	2004-01-20T00:23:20	2004-01-20T00:06:06			
[s] Observation end time (MET)	190983283.184000	190983598.08367			
Observation end date	2004-01-20T10:53:39	2004-01-20T10:59:58			
Read mode	TIMED	TIMED			

2.3 Aspect



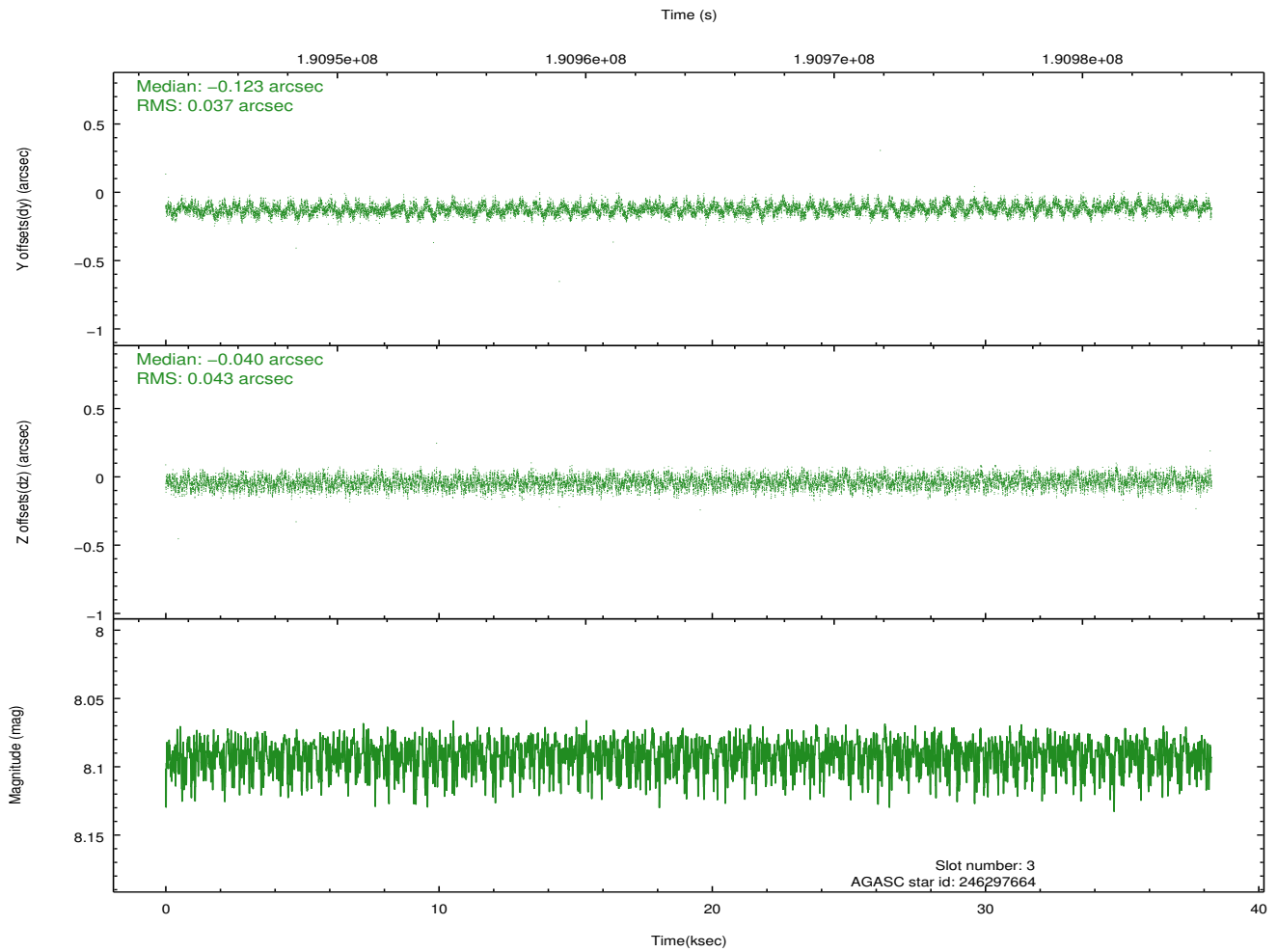
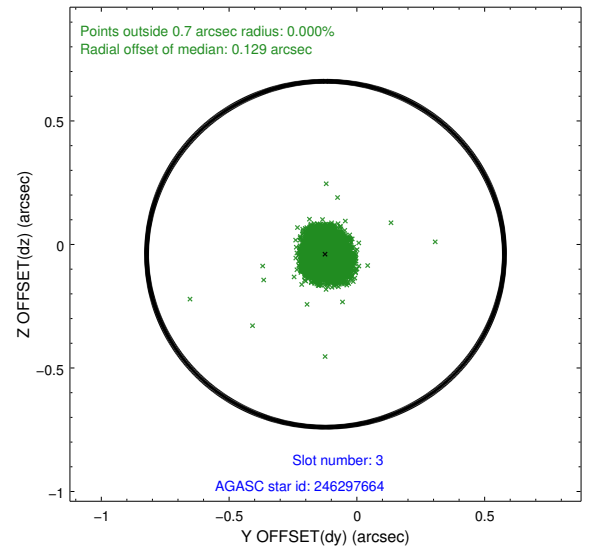
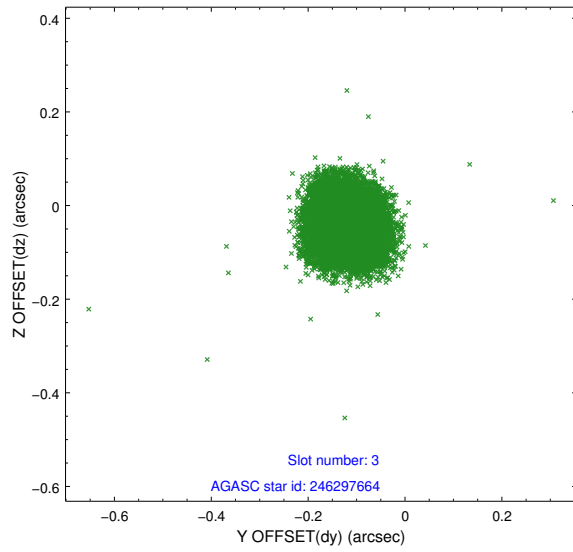


Slot Statistics

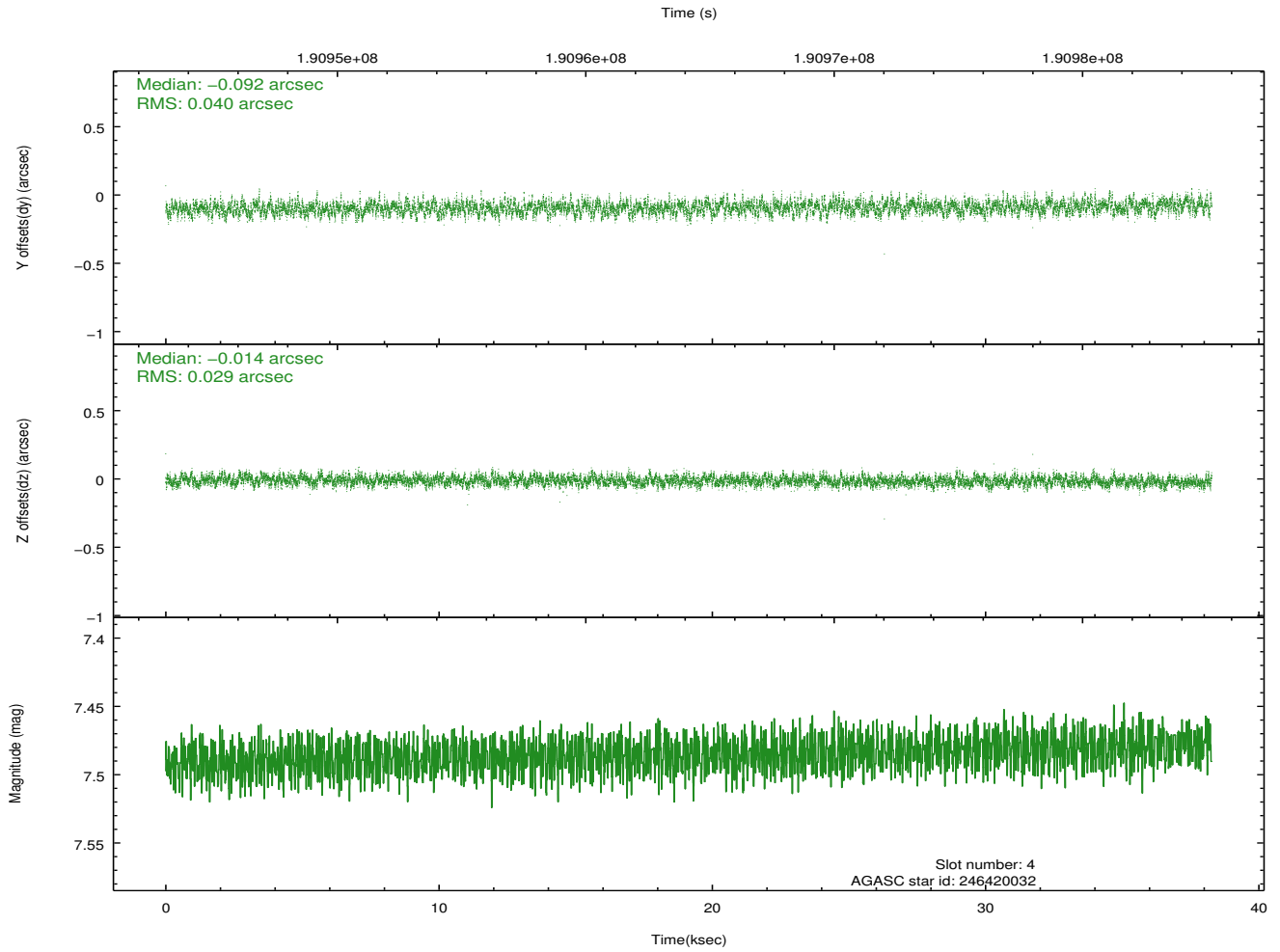
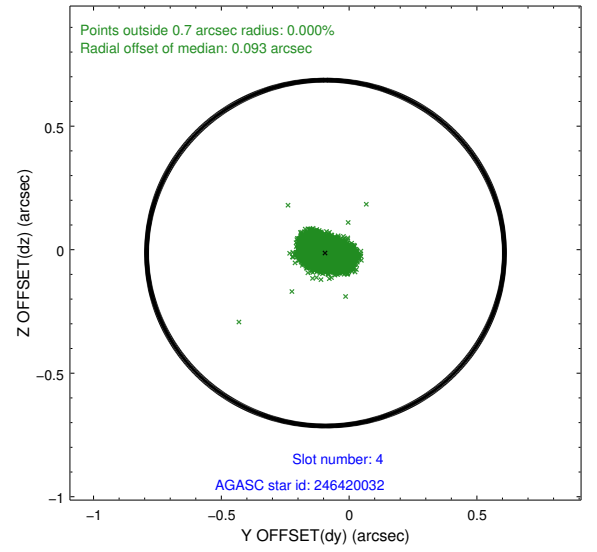
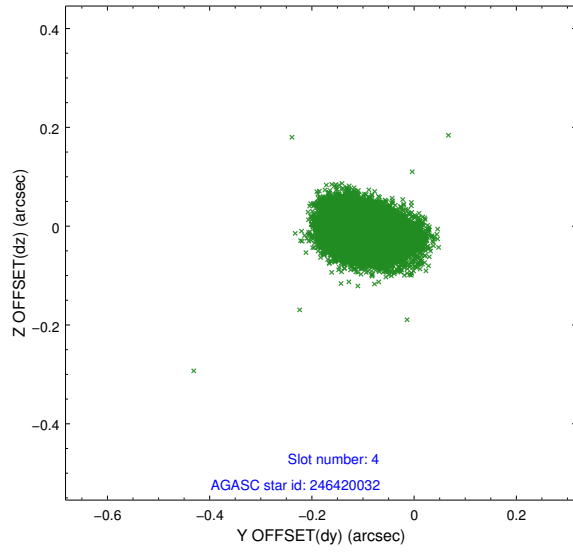
slot	status	id	mag	n_pts	med_dy	med_dz	dr1	dr2	ra	dec	mean_y	mean_z
0	FID	ACIS-S-2	7.10	9334	-0.056	-0.031	0.014	0.022	0.000000	0.000000	-760.52	-1730.45
1	FID	ACIS-S-4	7.20	9334	0.064	0.027	0.011	0.021	0.000000	0.000000	2152.84	178.10
2	FID	ACIS-S-6	7.35	9334	-0.034	0.011	0.009	0.016	0.000000	0.000000	401.48	815.49
3	GUIDE	246297664	8.09	18663	-0.123	-0.040	0.061	0.095	98.363620	23.178719	-2151.59	-1600.06
4	GUIDE	246420032	7.48	18669	-0.092	-0.014	0.052	0.087	99.176465	23.098044	-1944.68	1098.57
5	GUIDE	175779128	7.62	18668	0.023	-0.001	0.056	0.091	98.515144	22.117655	1652.45	-986.95
6	GUIDE	175780728	7.52	18671	0.085	0.031	0.053	0.084	98.529568	22.124139	1627.97	-939.63
7	GUIDE	175773480	8.12	18664	0.106	0.026	0.061	0.099	99.372112	22.148794	1448.77	1865.74

2.4 Star Slots

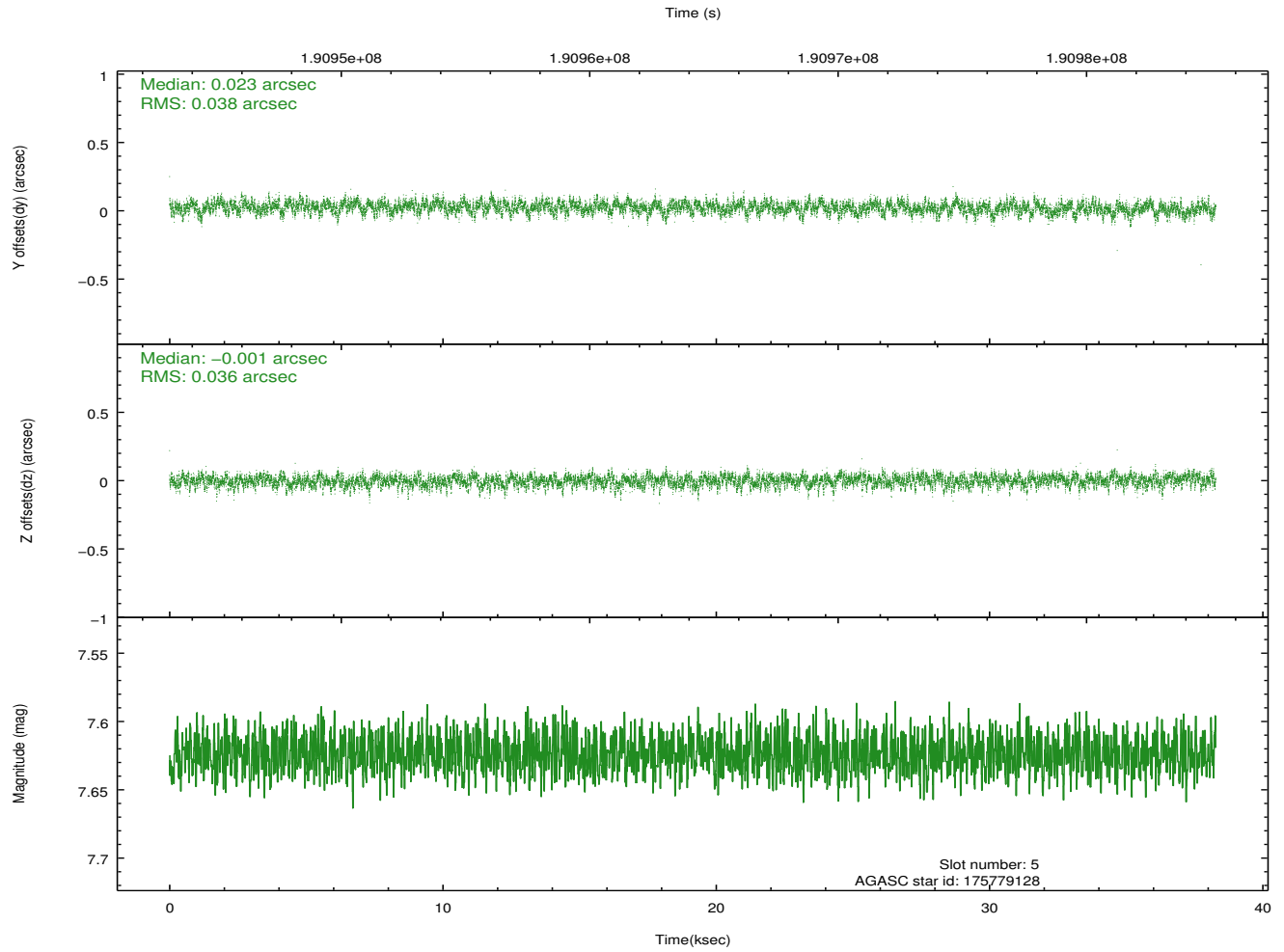
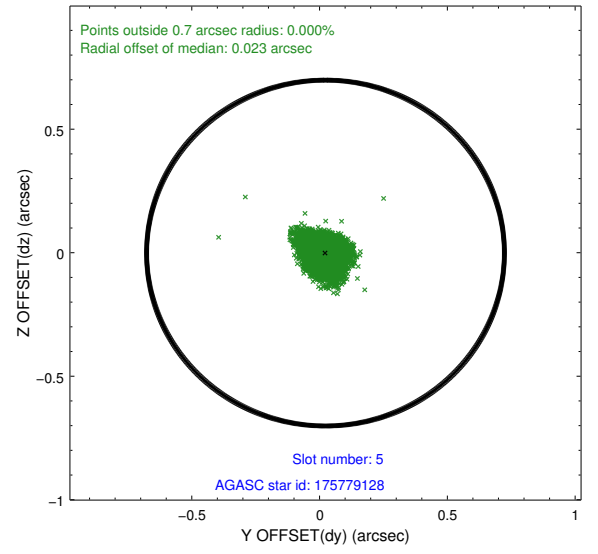
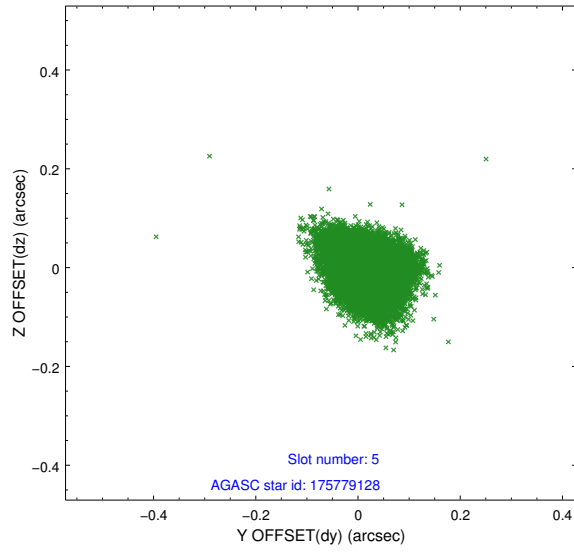
2.4.1 Slot 3



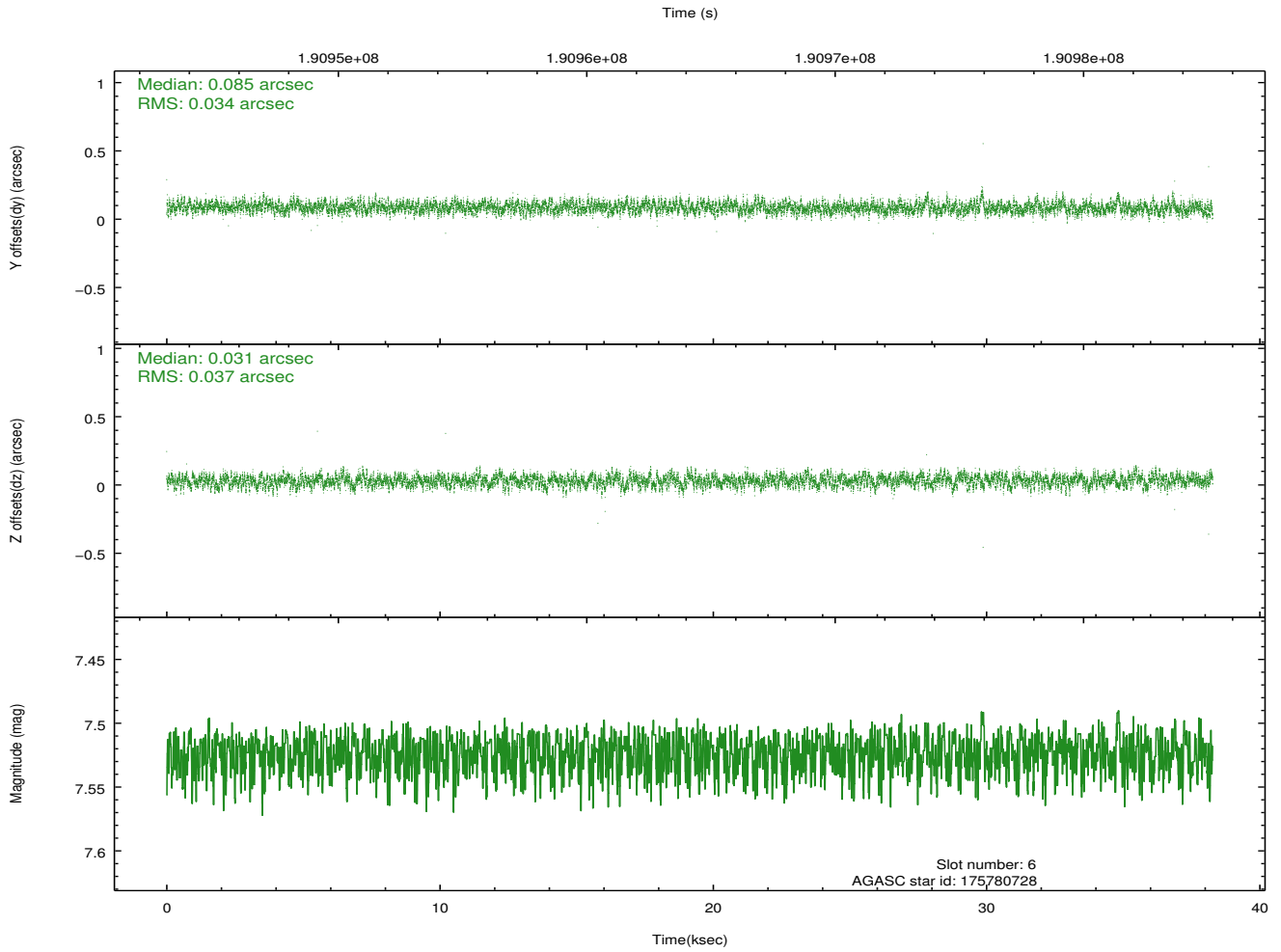
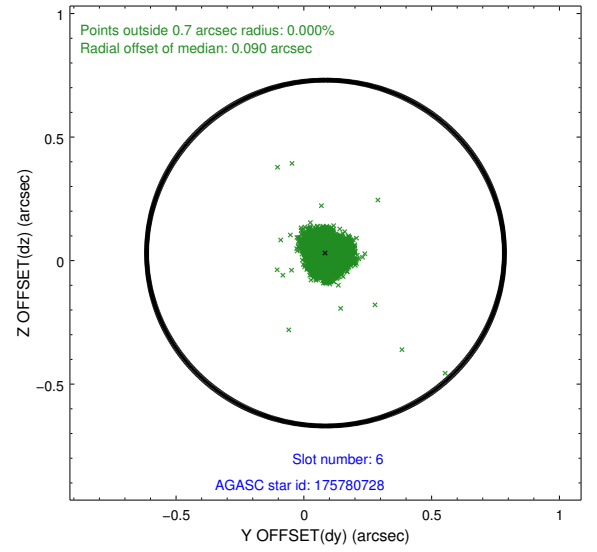
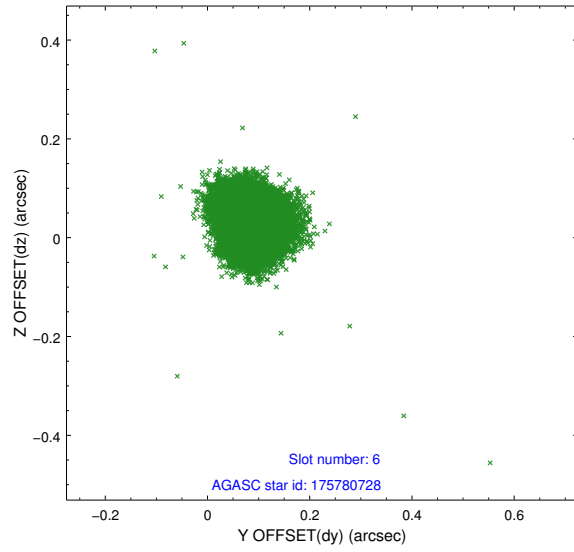
2.4.2 Slot 4



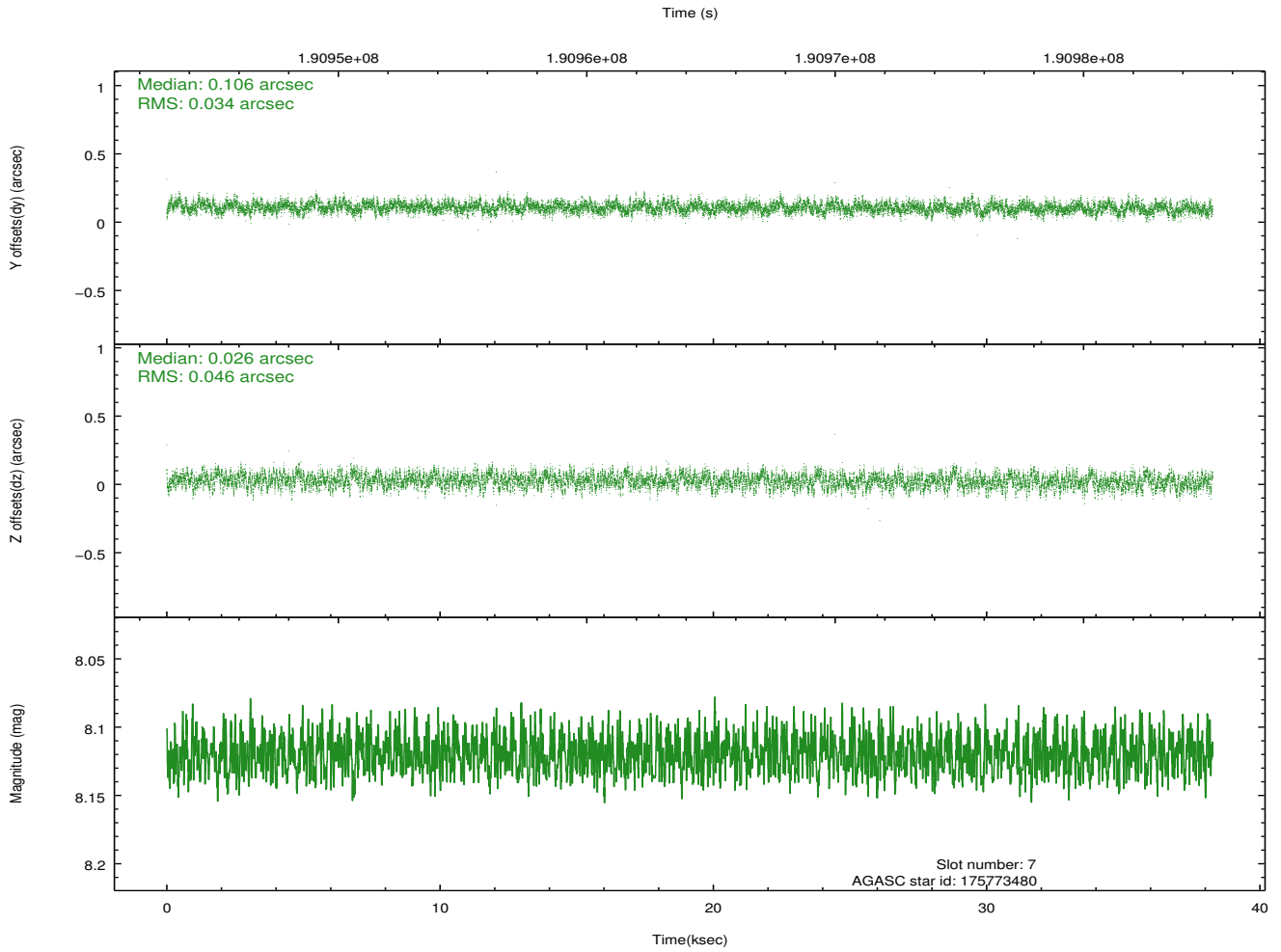
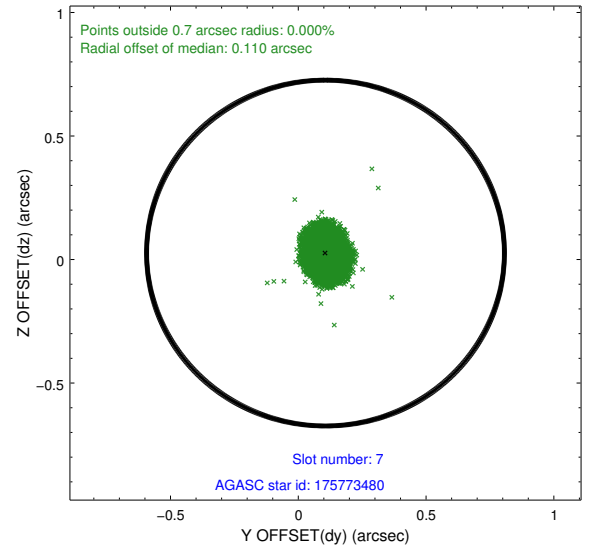
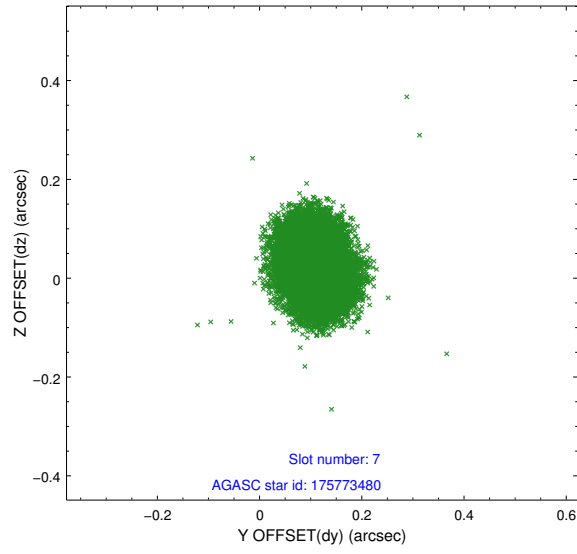
2.4.3 Slot 5



2.4.4 Slot 6

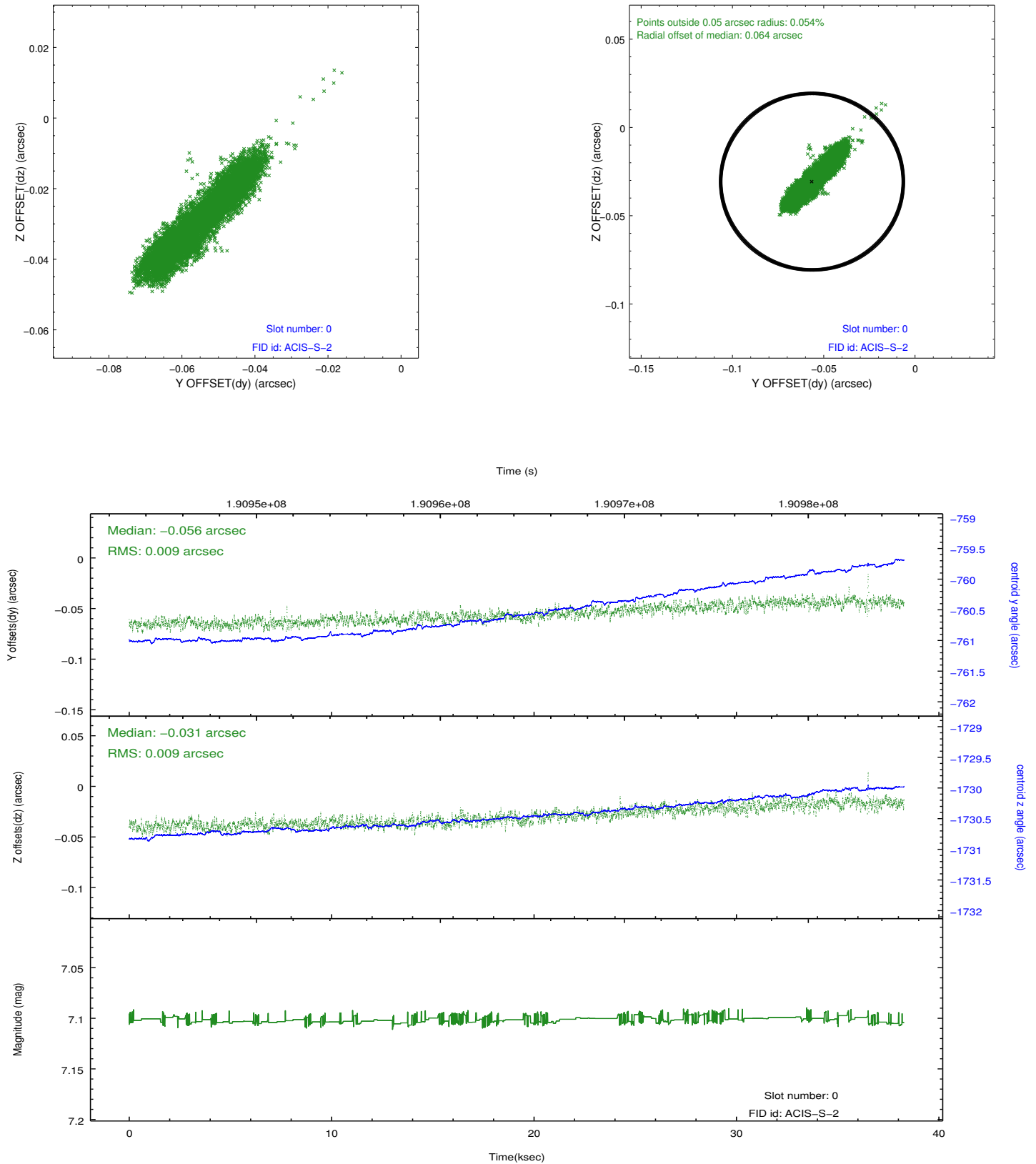


2.4.5 Slot 7

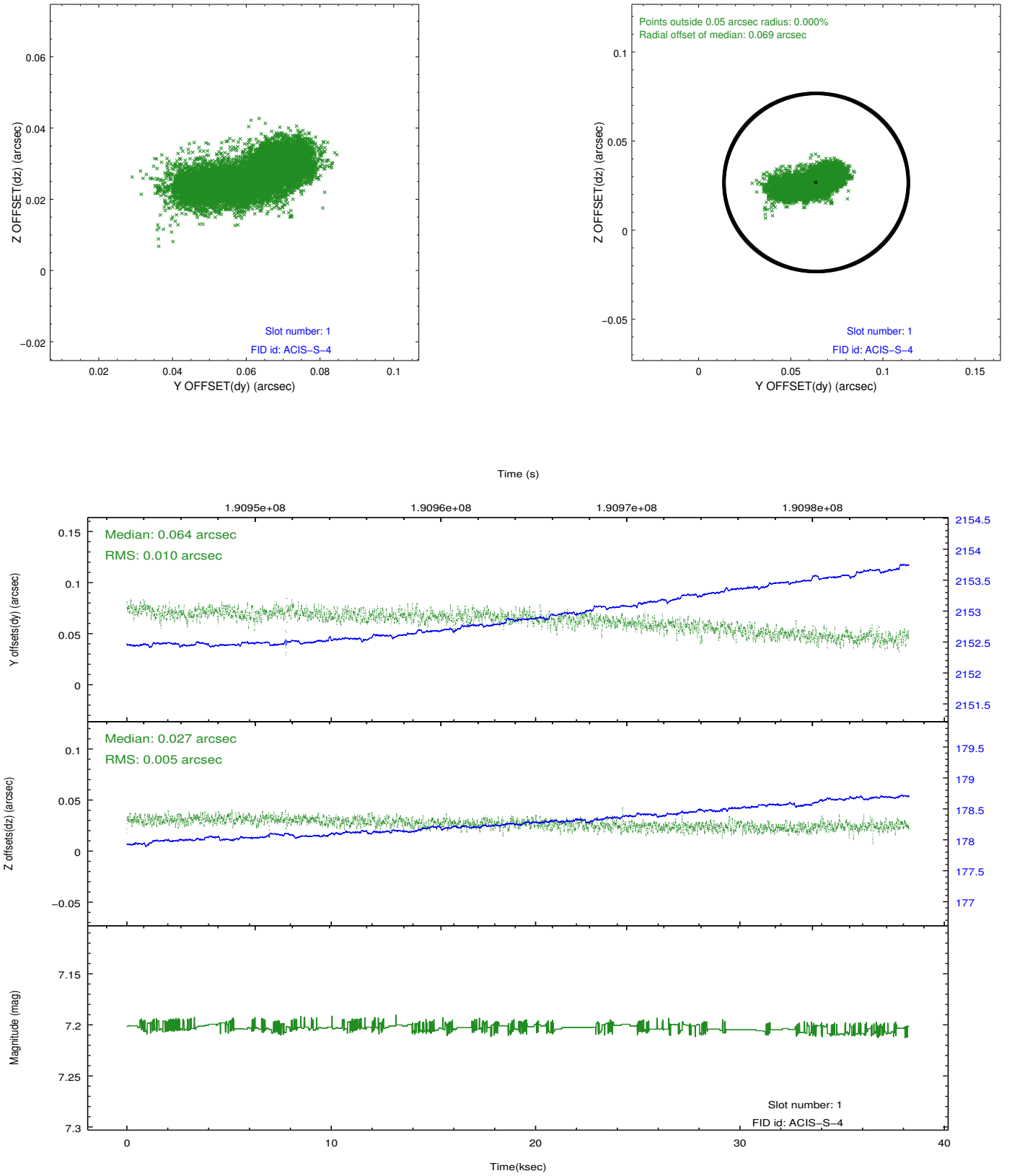


2.5 FID Slots

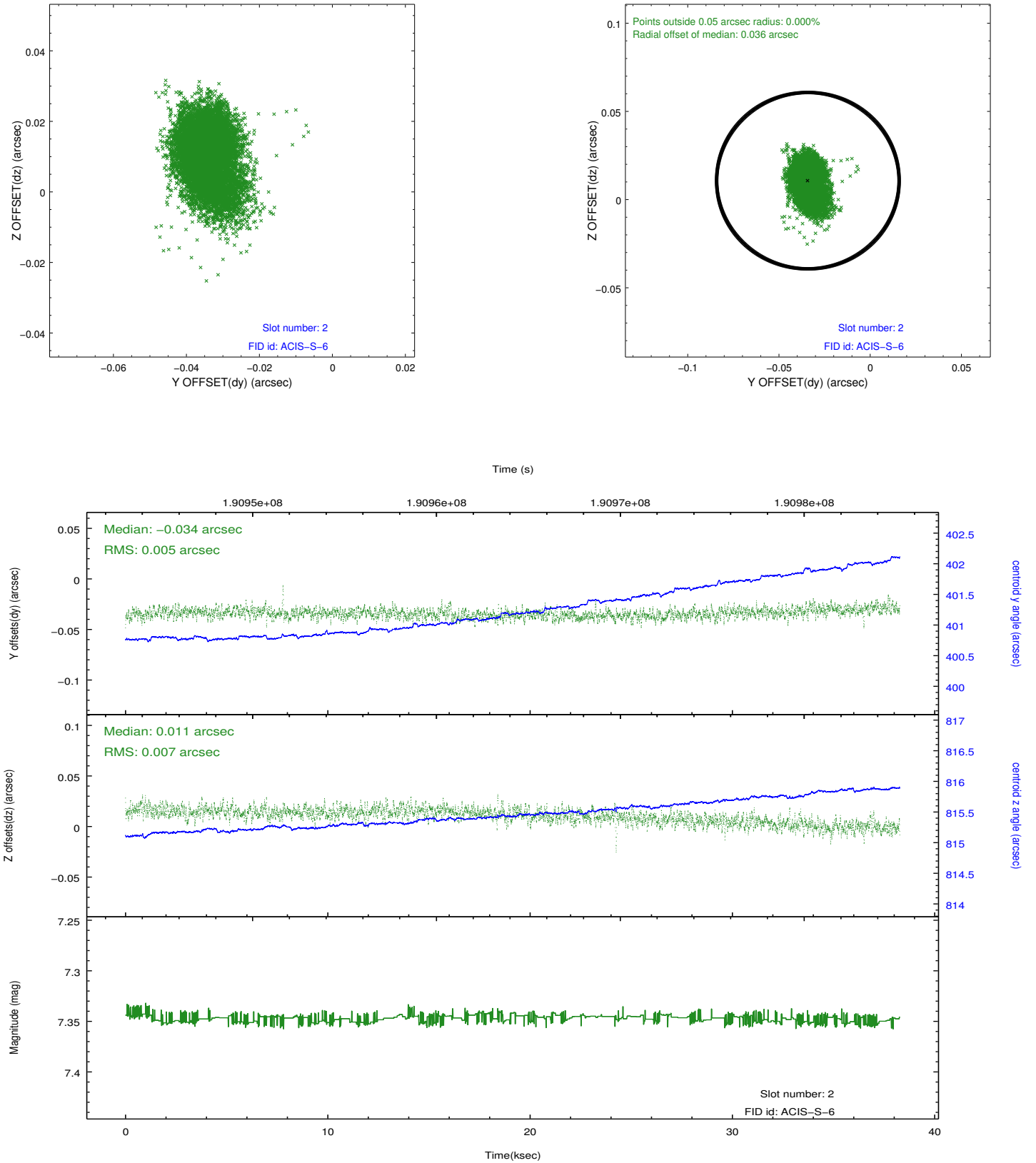
2.5.1 Slot 0



2.5.2 Slot 1



2.5.3 Slot 2



A Summary

A.1 Status

V&V Scientist	Jen Lauer
V&V Date (YYYY-MM-DD)	2012.12.04
V&V Edition	1
V&V Disposition and Status	OK
V&V Charge Time	38.273

A.2 Comments

Window constraint met. This is a moving target. Users will need to run sso_freeze or similar software to position the events in the reference frame of the target.