

V&V Reference Report

L2 ASCDS Version : 7.6.8

Observation 4416 - L2 Version 001
Chandra X-Ray Center

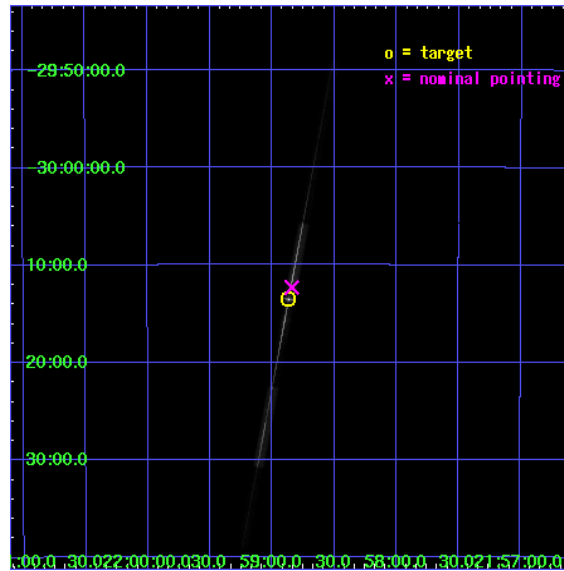
L2 Processing Date : Jun 23 2006

Contents

1	Front	2
2	OBI	3
2.1	OBI	3
2.1.1	Images	3
2.1.2	Bias	3
2.1.3	Parameters	4
2.1.4	Events	4
2.2	Compared Parameters	5
2.3	Aspect	6
2.4	Star Slots	9
2.4.1	Slot 3	9
2.4.2	Slot 4	10
2.4.3	Slot 5	11
2.4.4	Slot 6	12
2.4.5	Slot 7	13
2.5	FID Slots	14
2.5.1	Slot 0	14
2.5.2	Slot 1	15
2.5.3	Slot 2	16
3	Gratings	17
3.1	LETG Arm	17
A	Summary	19
A.1	Status	19
A.2	Comments	19

1 Front

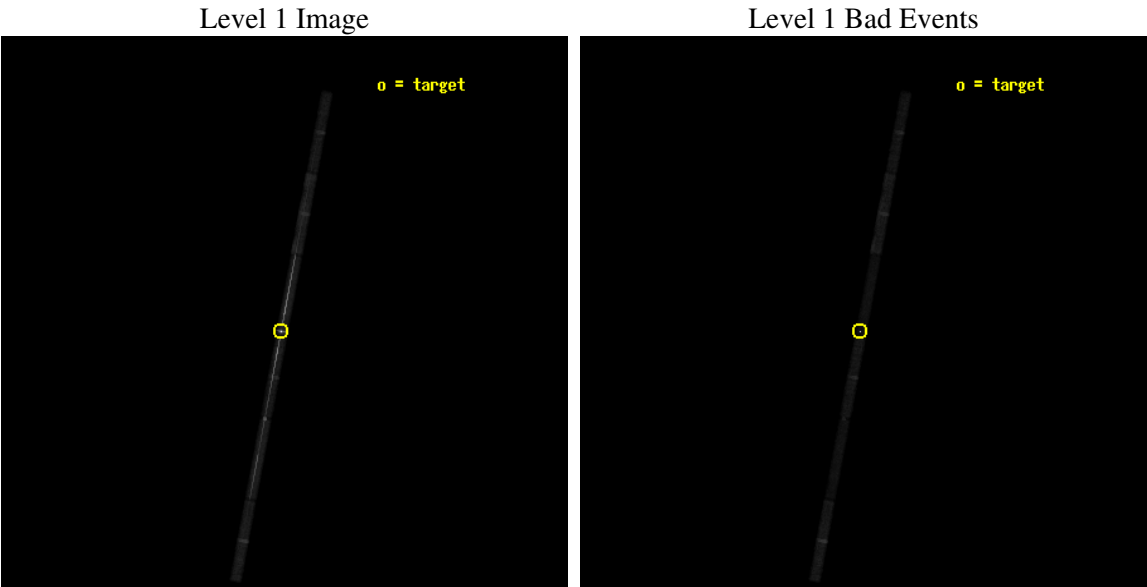
seq_num	790086
obs_id	4416
title	AO4 CALIBRATION OBSERVATIONS OF PKS2155-304
observer	Dr. CXC Calibration
object	PKS2155-304
dtcycle	0
cycle	P
ra_targ	329.716667
dec_targ	-30.225556
ra_nom	329.71029768685
dec_nom	-30.205214826203
roll_nom	280.75360979524
revision	2
ontime	49202.999162078
livetime	46478.057073106
ontime4	49202.999162078
ontime5	49202.999162078
ontime6	49202.999162078
ontime7	49202.999162078
ontime8	49202.999162078
ontime9	49202.999162078
l2events	328834



2 OBI

2.1 OBI

2.1.1 Images



2.1.2 Bias

Chip 4

Chip 5

Chip 6



Chip 7

Chip 8

Chip 9



2.1.3 Parameters

obi_num	1
ascdsver	7.6.8
caldbver	3.2.2
date	2006-06-23T20:13:47
revision	2

sched_exp_time	48691.000000
ontime	49204.452237636
ontime4	49204.452237636
ontime5	49204.452237636
ontime6	49204.452237636
ontime7	49204.452237636
ontime8	49204.452237636
ontime9	49205.193277627
l1events	627419

2.1.4 Events

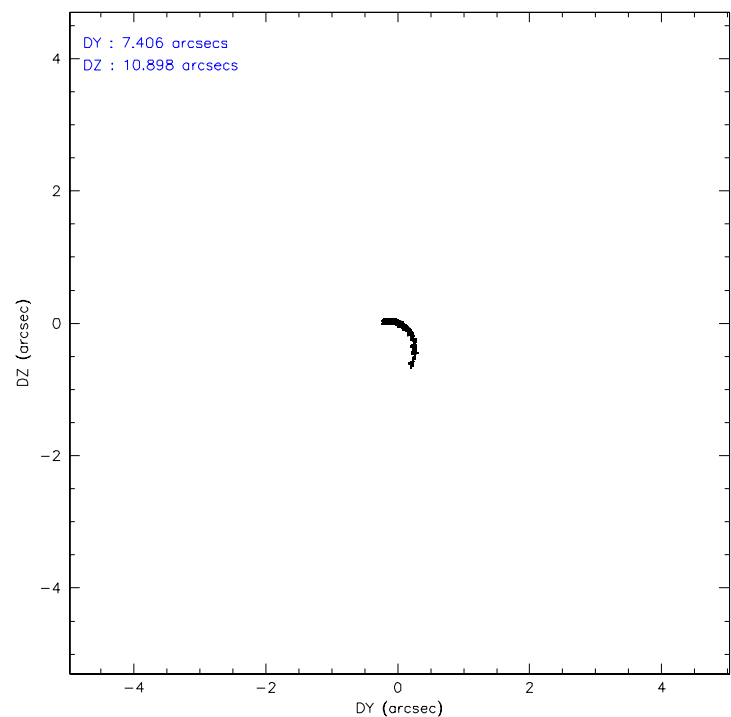
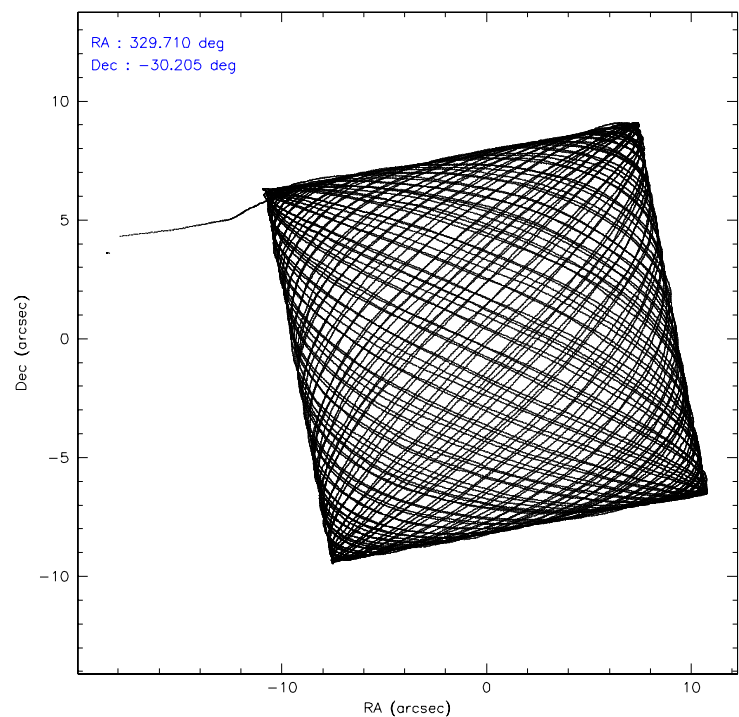
	ccd 4	ccd 5	ccd 6	ccd 7	ccd 8	ccd 9
level 1 events	57236	85716	111772	253242	72919	46534
rejected events	49137	31397	42388	62281	53709	38743
rejected %	85%	36%	37%	24%	73%	83%

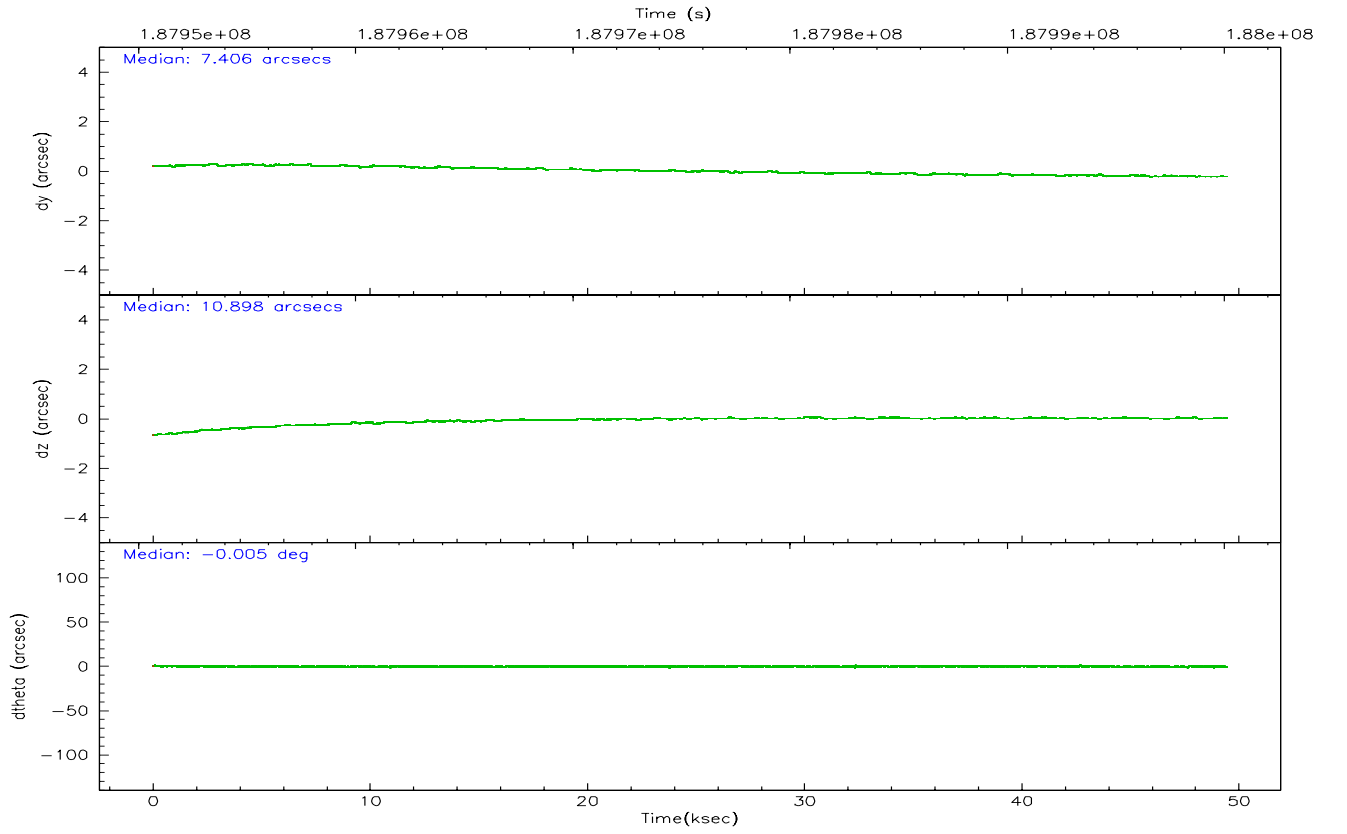
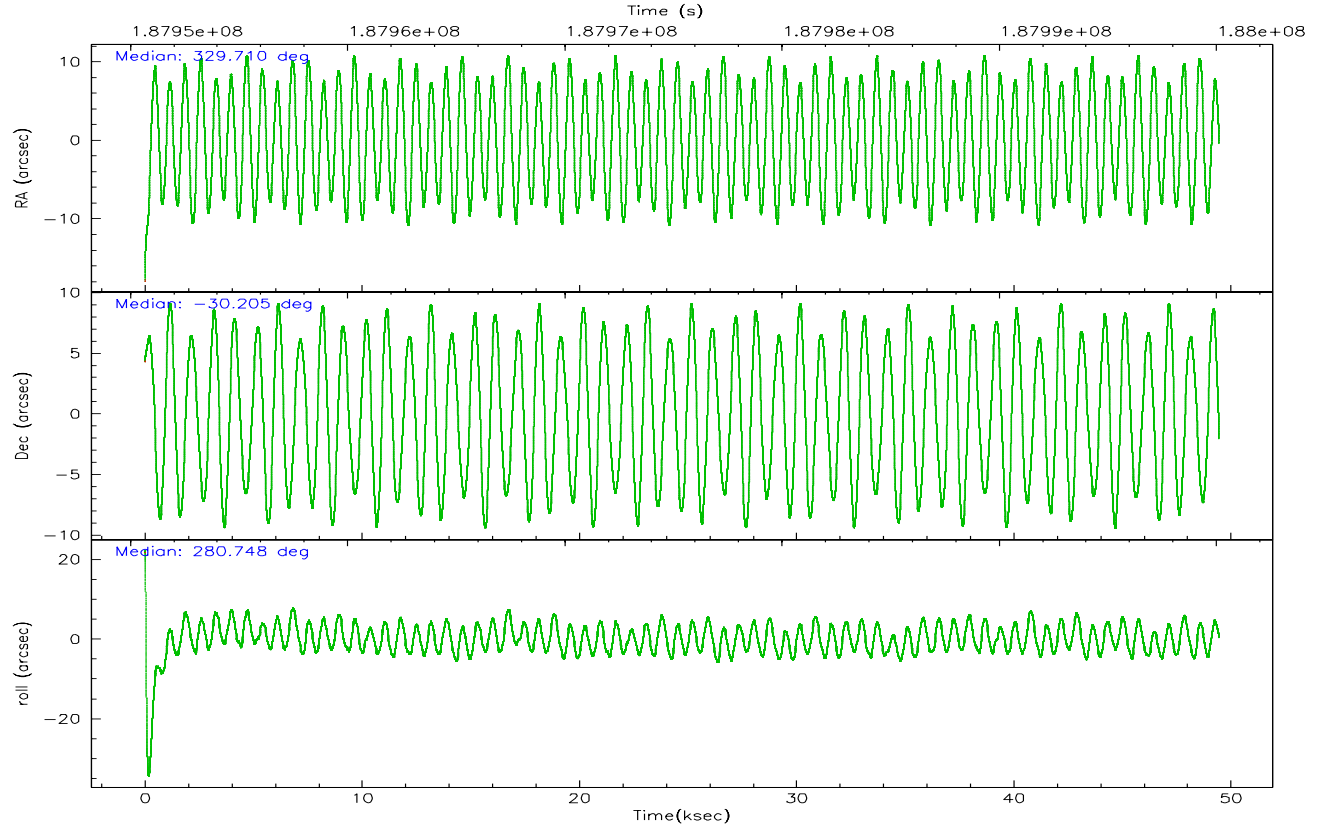
	ccd 4	ccd 5	ccd 6	ccd 7	ccd 8	ccd 9
grade 0 events	3984	22131	55121	48768	8886	3835
	6%	25%	49%	19%	12%	8%
grade 1 events	26	548	103	2455	19	20
	0%	0%	0%	0%	0%	0%
grade 2 events	1264	11560	6849	47433	3021	1104
	2%	13%	6%	18%	4%	2%
grade 3 events	942	3004	2619	20782	1688	957
	1%	3%	2%	8%	2%	2%
grade 4 events	943	2920	2641	20430	1687	906
	1%	3%	2%	8%	2%	1%
grade 5 events	1597	3736	1725	13977	2066	1603
	2%	4%	1%	5%	2%	3%
grade 6 events	966	14708	2155	53556	3928	989
	1%	17%	1%	21%	5%	2%
grade 7 events	47514	27109	40559	45841	51624	37120
	83%	31%	36%	18%	70%	79%

2.2 Compared Parameters

Parameter	Planned	Actual	Parameter	Planned	Actual
Instrument	ACIS	ACIS	Obspar format version number	6	6
Detector	ACIS-456789	ACIS-456789	Obspar file type	PREDICTED	ACTUAL
Grating	LETG	LETG	Obspar update status	NONE	UPDATED
Data mode	FAINT	FAINT	On-chip summing requested	N	N
Observation mode	POINTING	POINTING	Subarray requested	CUSTOM	1/8
Pointing RA	329.689412	329.7102976868522	Subarray start row	113	113
Pointing Dec	-30.184862	-30.20521482620273	Subarray row count	128	128
Pointing Roll	280.586462	280.7536097952433	Alternating exposures requested	N	N
SIM focus pos (mm)	-0.684267	-0.6828225247311905	Primary exposure time	0.000000	0.7
SIM defocus (mm)	0	0.001444936568705701			
SIM translation stage pos (mm)	-182.132523	-182.1370004450064			
SIM translation stage offset (mm)	-8	-7.995522138001405			
Observation start time	187951431.184000	187950179.12666			
Observation start date	2003-12-16T08:42:47	2003-12-16T08:22:59			
Observation end time	188000122.184000	188000820.27886			
Observation end date	2003-12-16T22:14:18	2003-12-16T22:27:00			
Read mode	TIMED	TIMED			

2.3 Aspect



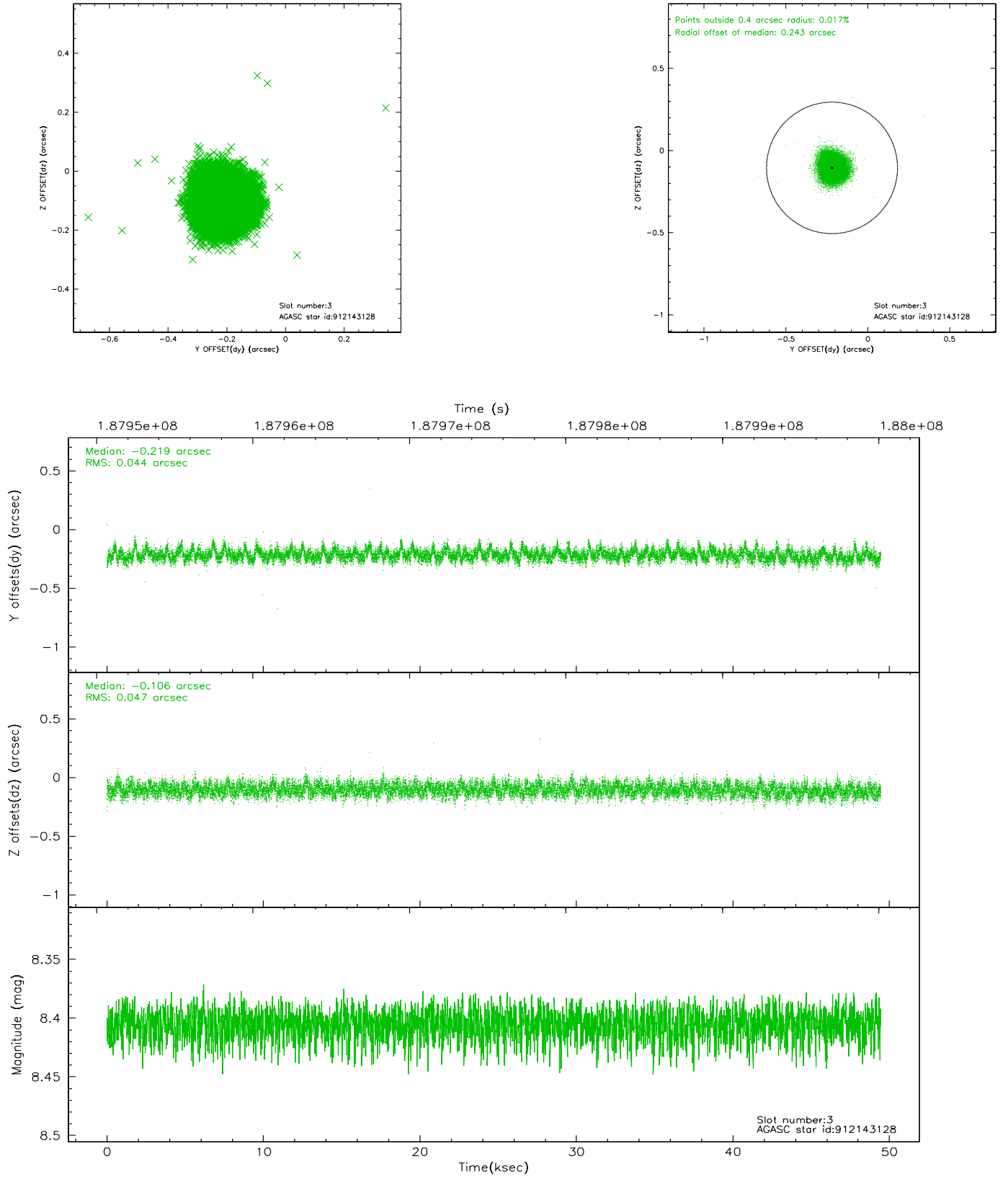


Slot Statistics

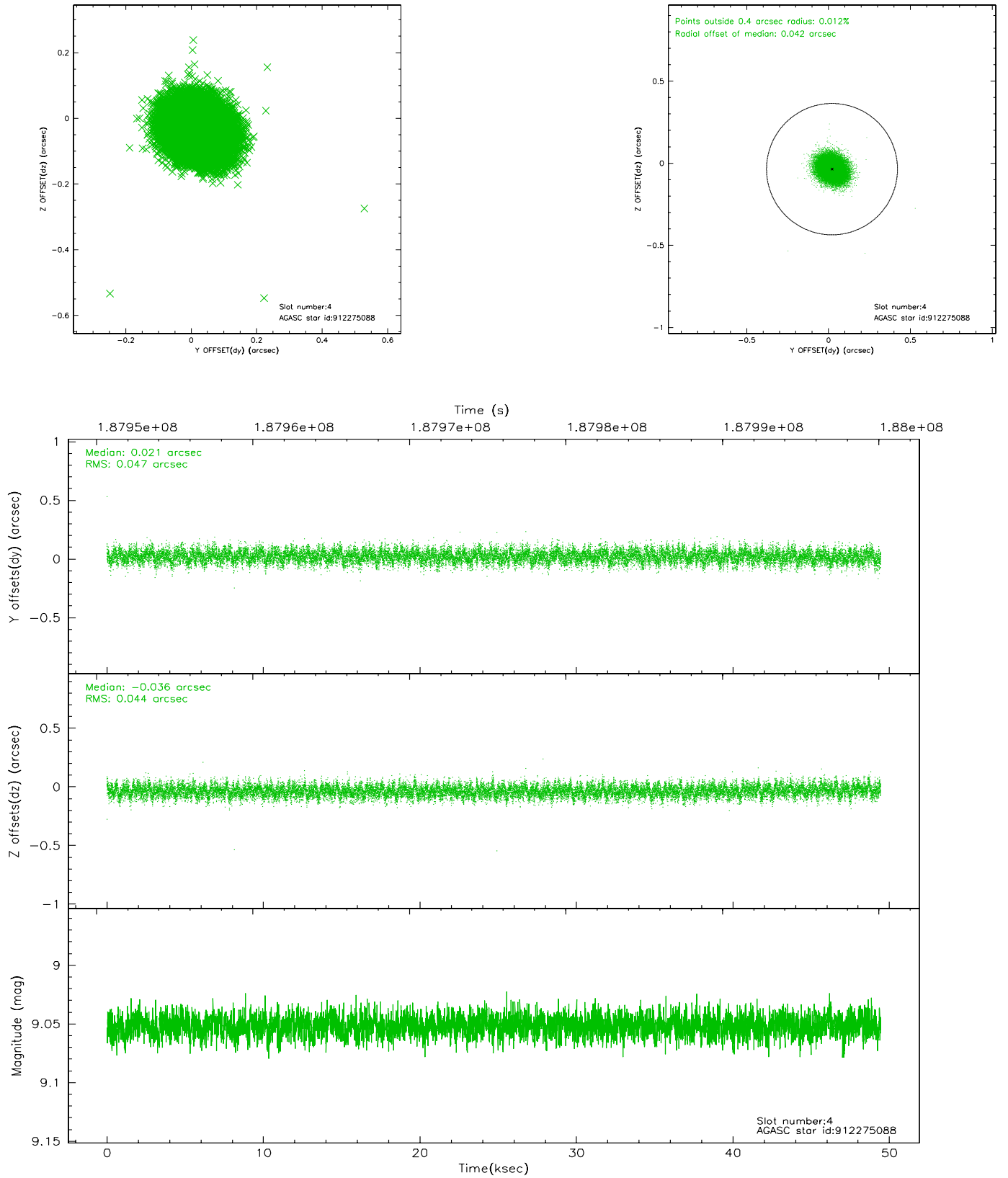
slot	status	id	mag	n_pts	med_dy	med_dz	dr1	dr2	ra	dec	mean_y	mean_z
0	FID	ACIS-S-2	7.08	12063	-0.065	-0.043	0.008	0.031	0.000000	0.000000	-759.65	-1896.86
1	FID	ACIS-S-4	7.17	12063	0.031	0.045	0.008	0.018	0.000000	0.000000	2153.71	11.75
2	FID	ACIS-S-6	7.40	12063	0.008	0.007	0.010	0.018	0.000000	0.000000	402.35	649.06
3	GUIDE	912143128	8.41	24122	-0.219	-0.106	0.068	0.109	328.924992	-29.706140	-2124.29	-2034.44
4	GUIDE	912275088	9.05	24085	0.021	-0.036	0.069	0.111	329.619228	-29.738698	-1618.75	79.39
5	GUIDE	981468128	9.36	24116	0.137	-0.043	0.077	0.128	329.756350	-30.158334	-54.99	222.61
6	GUIDE	981478152	9.40	24113	0.003	0.095	0.102	0.164	329.415589	-30.057192	-607.05	-754.14
7	GUIDE	981471664	6.36	24125	0.061	0.094	0.075	0.120	328.981826	-30.605916	1094.75	-2434.30

2.4 Star Slots

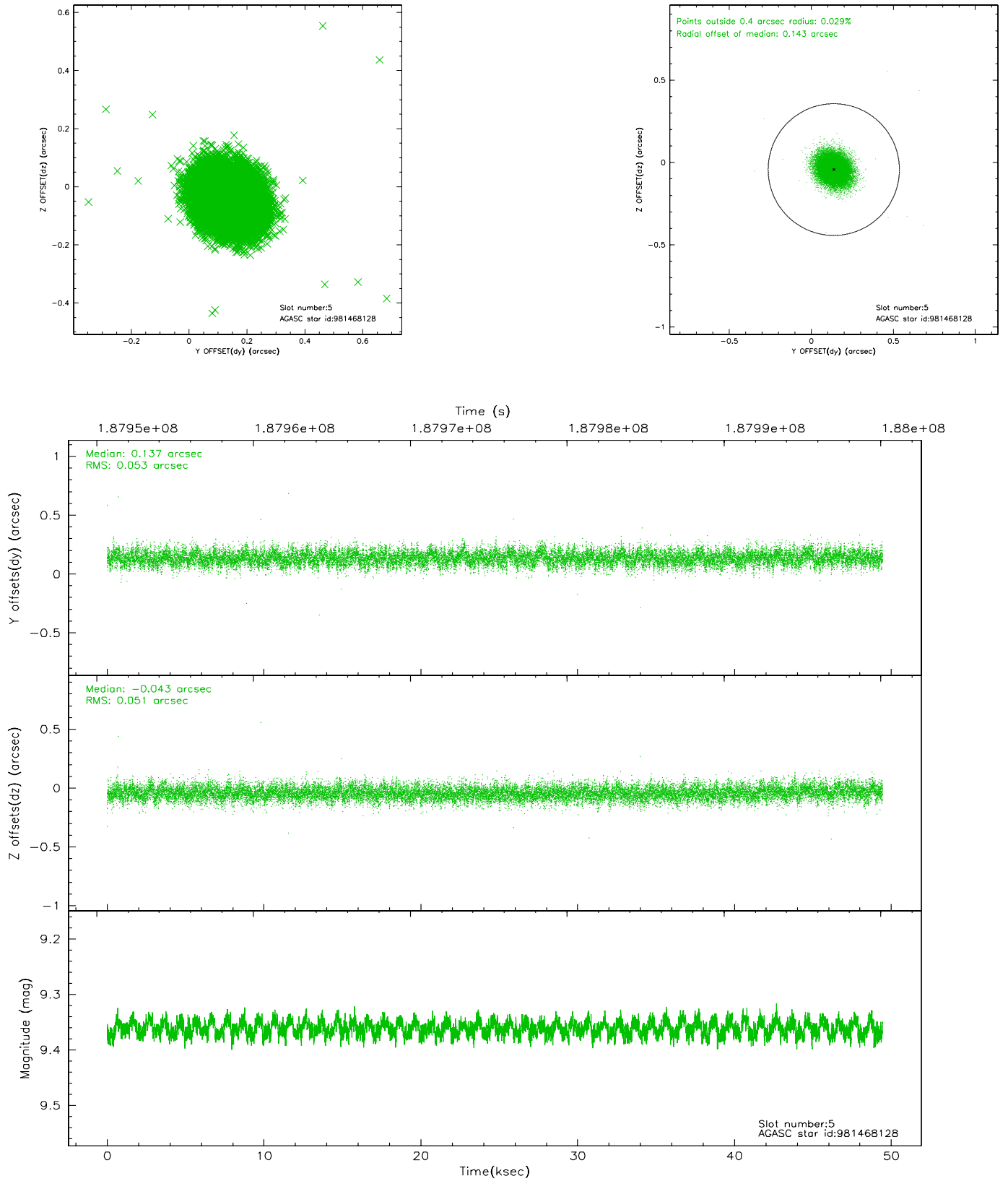
2.4.1 Slot 3



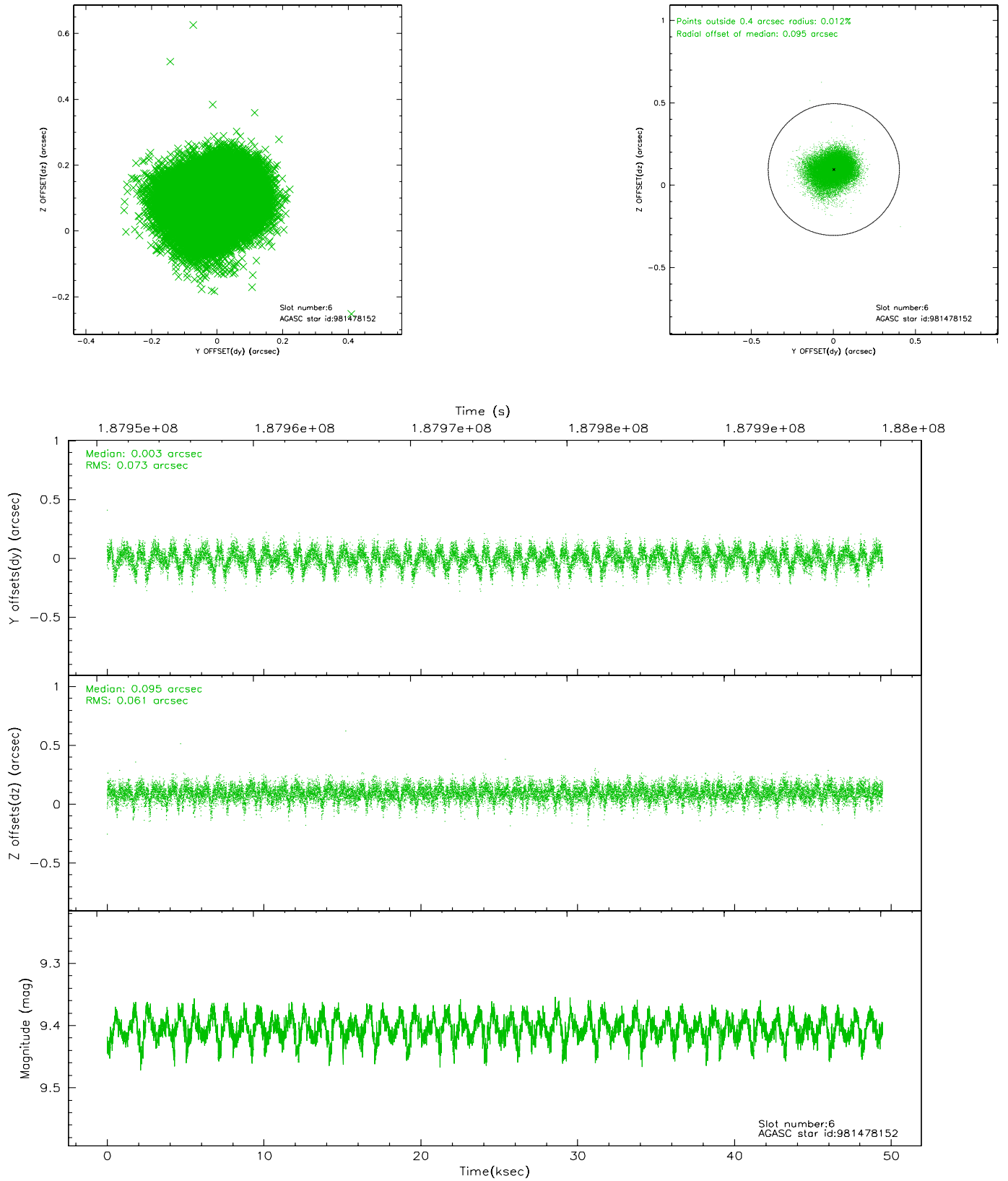
2.4.2 Slot 4



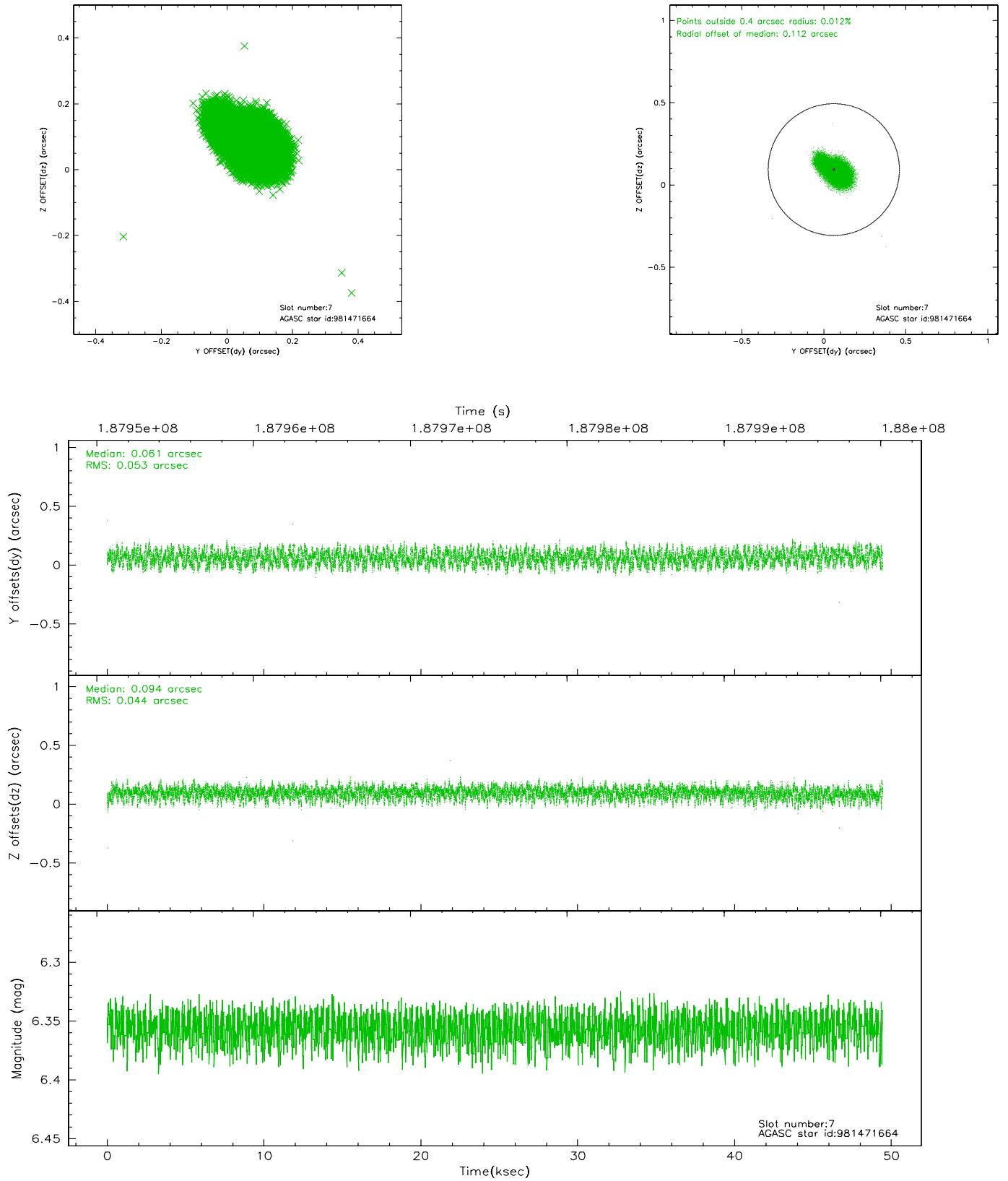
2.4.3 Slot 5



2.4.4 Slot 6

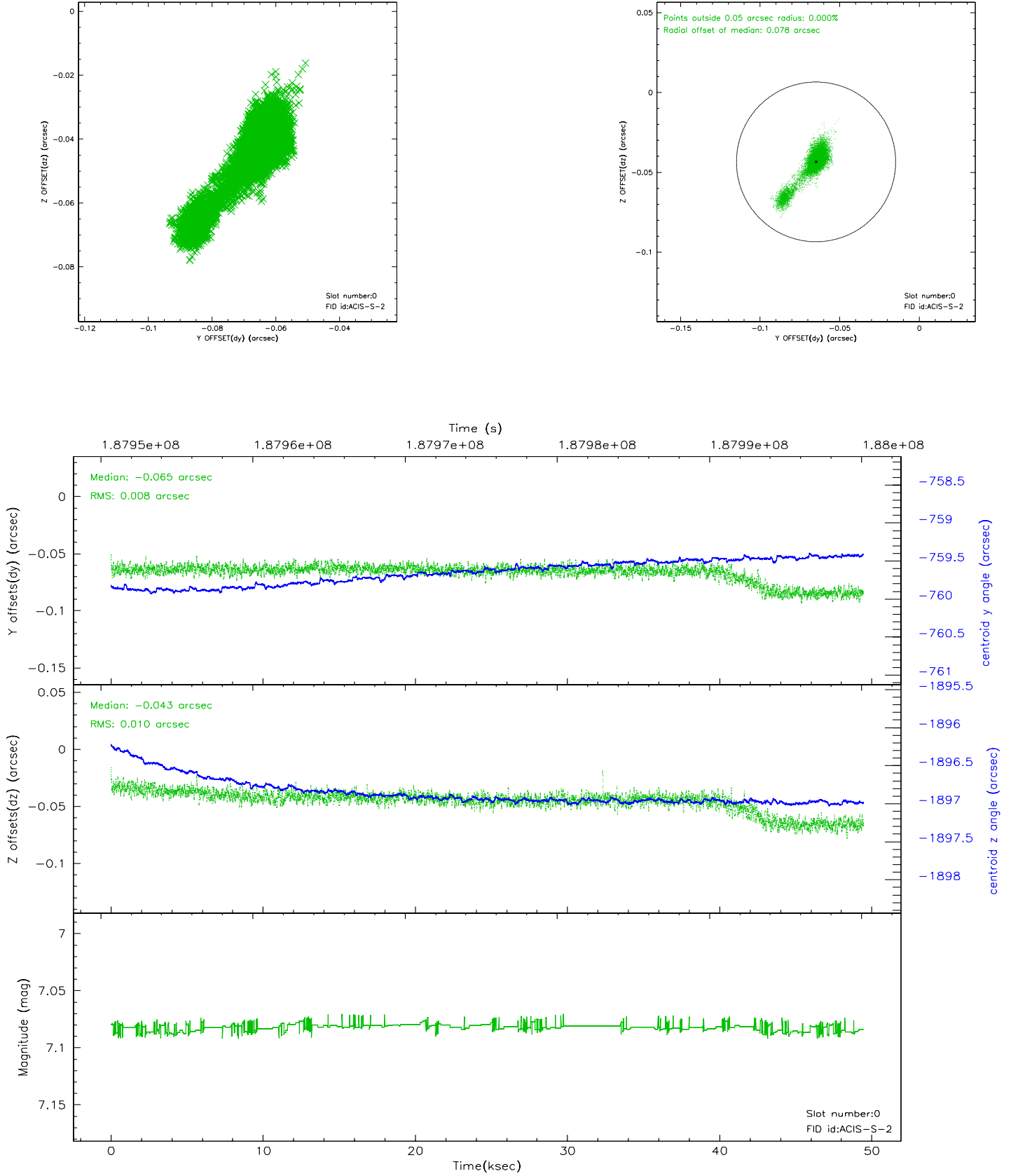


2.4.5 Slot 7

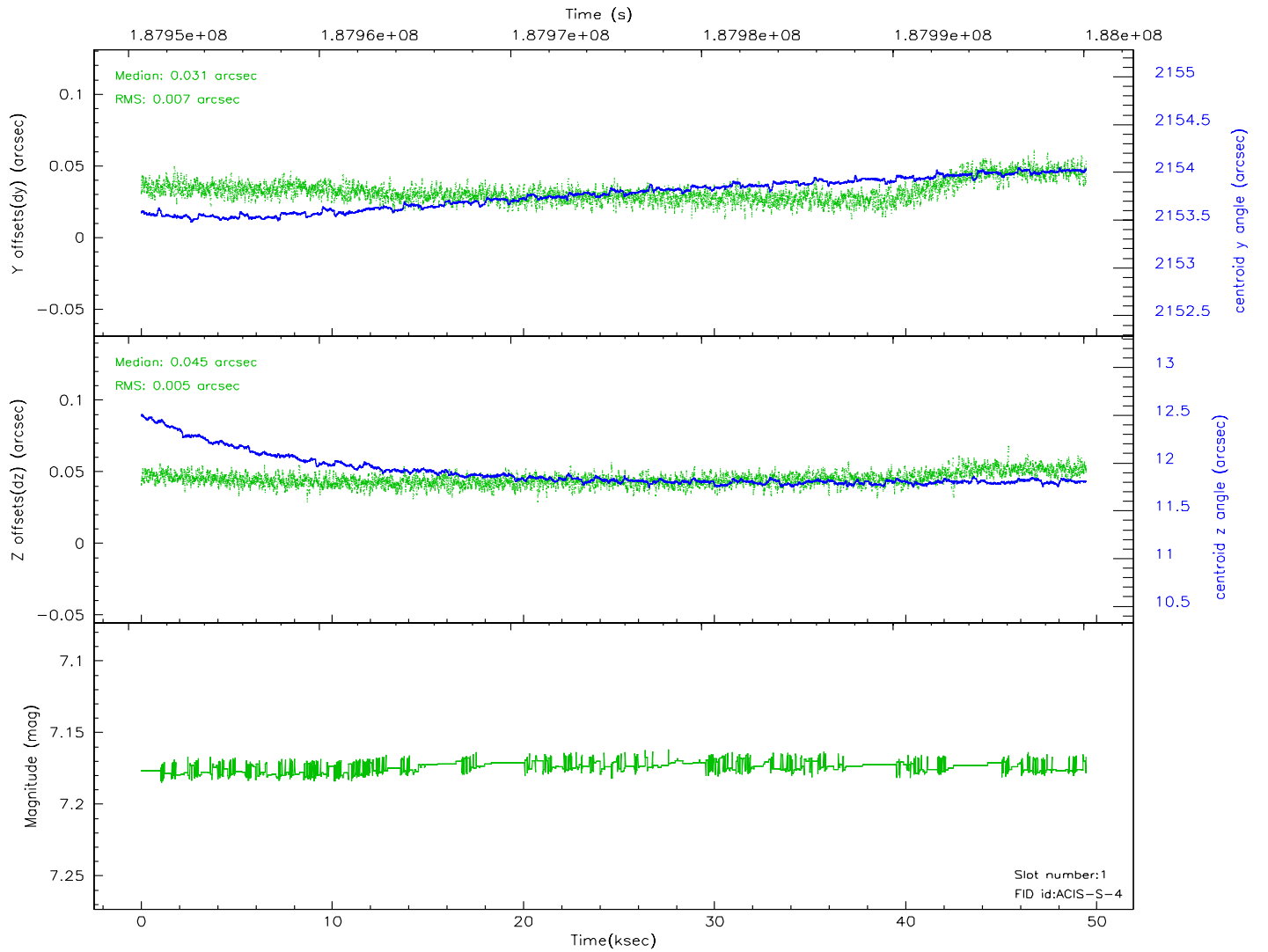
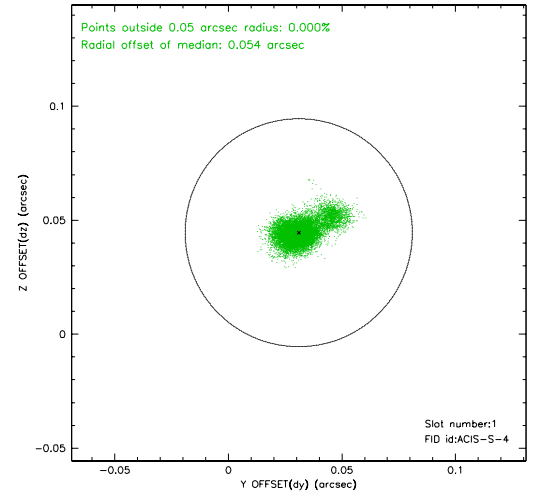
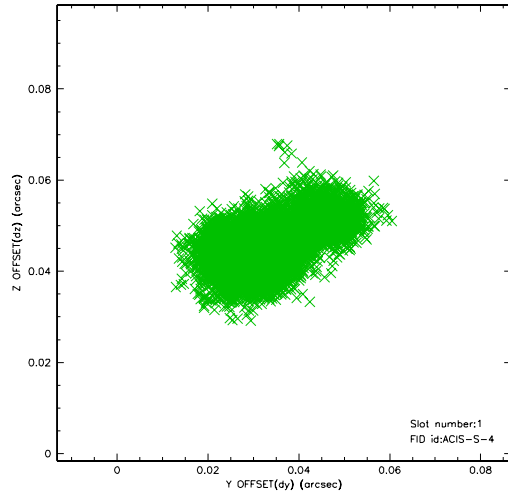


2.5 FID Slots

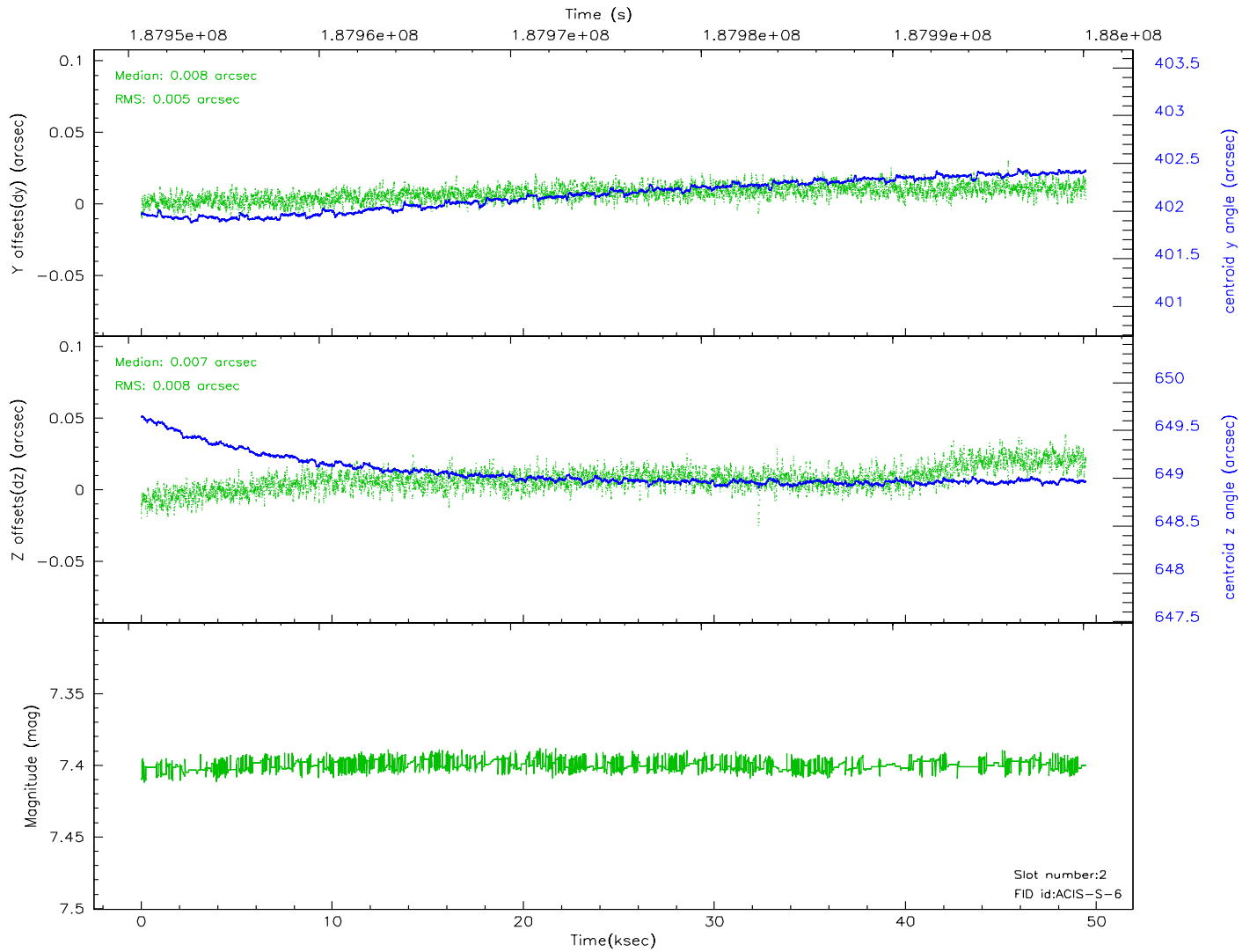
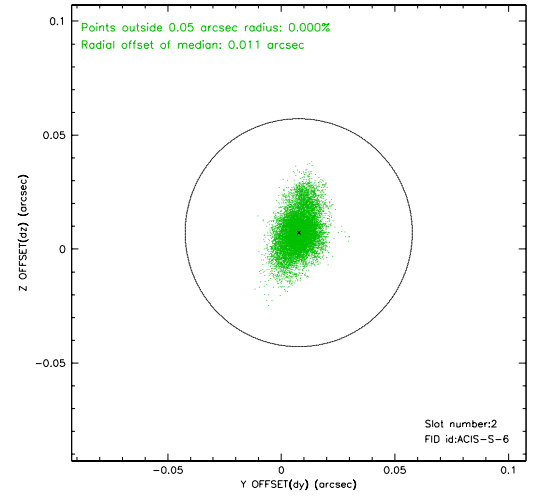
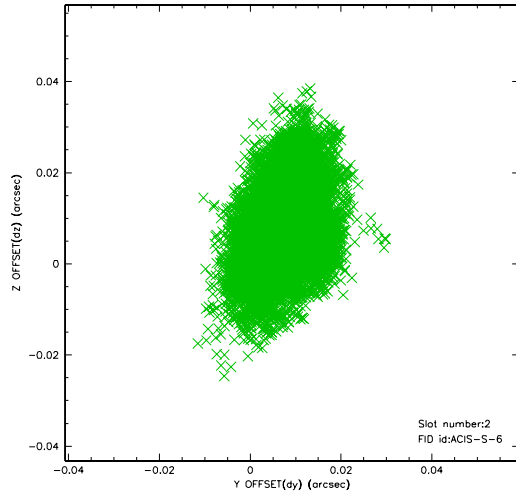
2.5.1 Slot 0



2.5.2 Slot 1

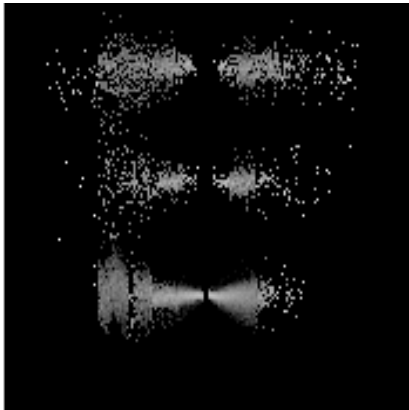


2.5.3 Slot 2

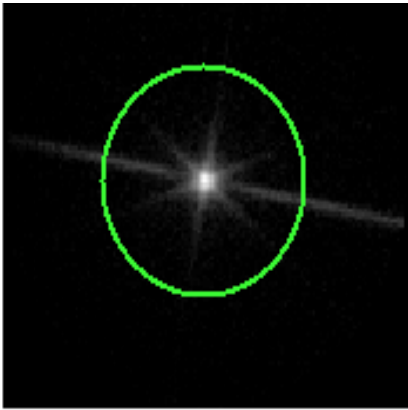


3 Gratings

3.1 LETG Arm



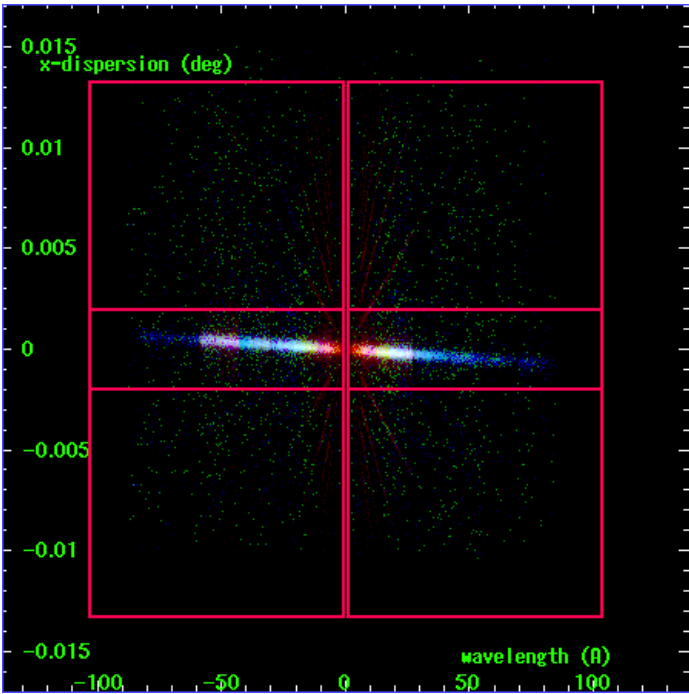
LETG Order Sort 123



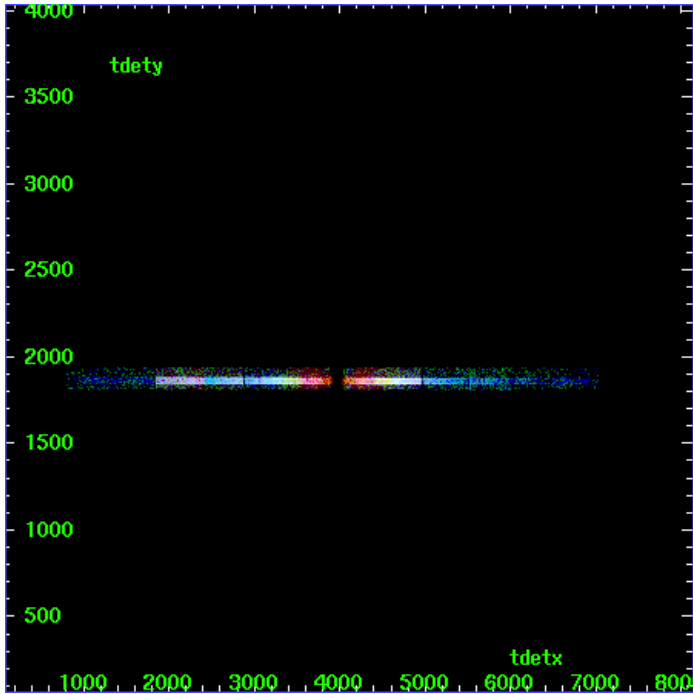
LETG Zero Order



LETG Order Sort ALL

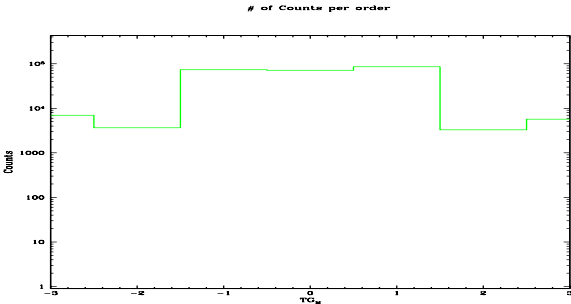


Spot Image LETG

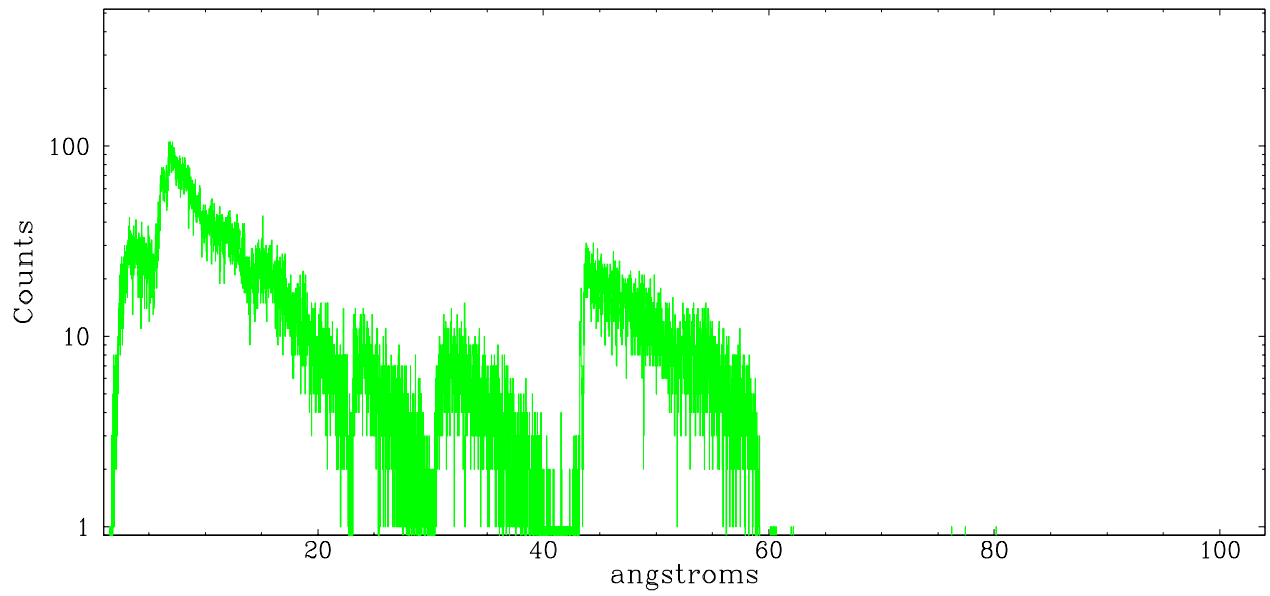


Full Detector LETG

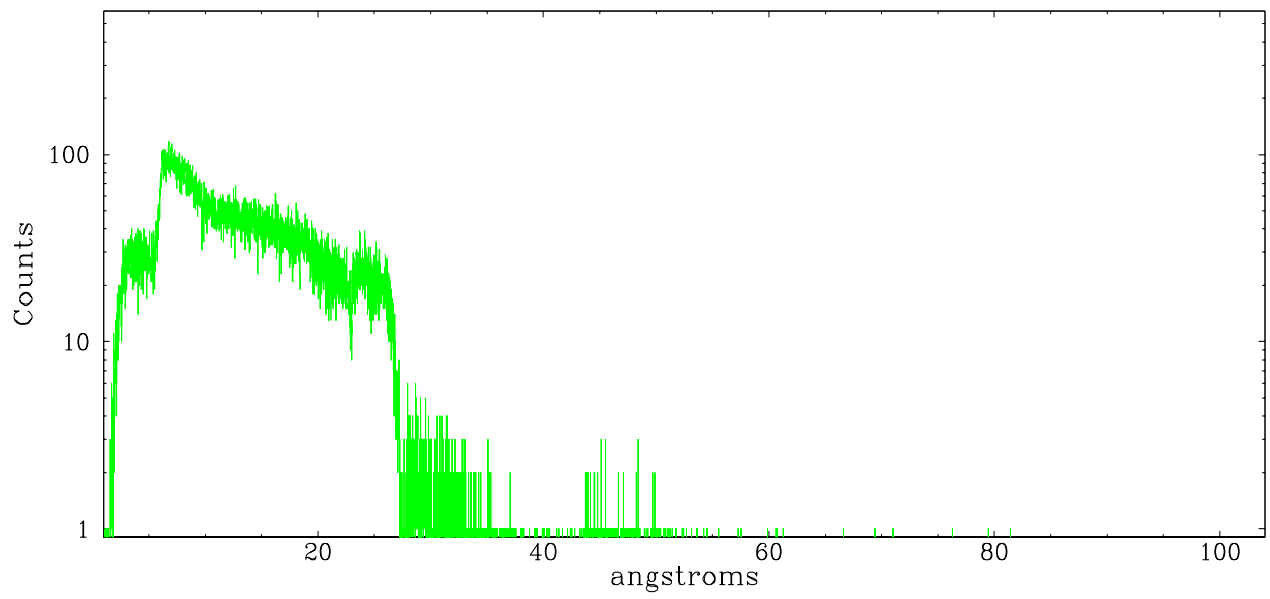
	order -3	order -2	order -1	order 0	order 1	order 2	order 3
Events	6973	3647	73161	71467	85227	3297	5719



leg order -1



leg order +1



A Summary

A.1 Status

V&V Scientist	Beth Sundheim
V&V Date (YYYY-MM-DD)	2006.06.26
V&V Edition	1
V&V Disposition and Status	OK
V&V Charge Time	49.203

A.2 Comments