

V&V Reference Report

L2 ASCDS Version : 7.6.8

Observation 4386 - L2 Version 001
Chandra X-Ray Center

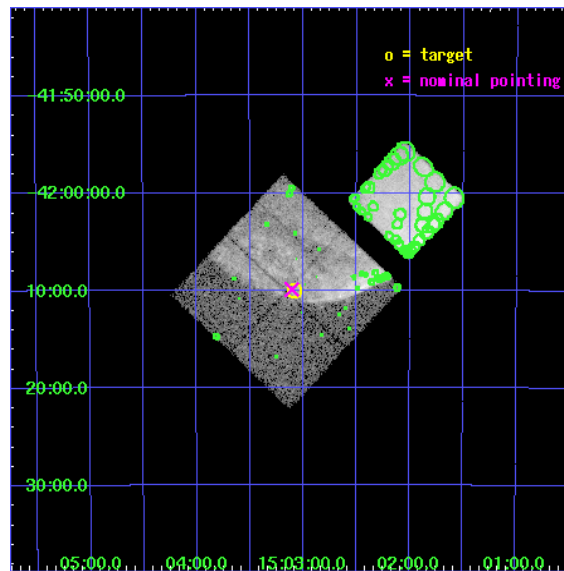
L2 Processing Date : Jul 30 2006

Contents

1	Front	2
2	OBI	3
2.1	OBI	3
2.1.1	Images	3
2.1.2	Bias	3
2.1.3	Parameters	4
2.1.4	Events	4
2.2	Compared Parameters	5
2.3	Aspect	6
2.4	Star Slots	9
2.4.1	Slot 3	9
2.4.2	Slot 4	10
2.4.3	Slot 5	11
2.4.4	Slot 6	12
2.4.5	Slot 7	13
2.5	FID Slots	14
2.5.1	Slot 0	14
2.5.2	Slot 1	15
2.5.3	Slot 2	16
3	Point Sources	17
A	Summary	18
A.1	Status	18
A.2	Comments	18

1 Front

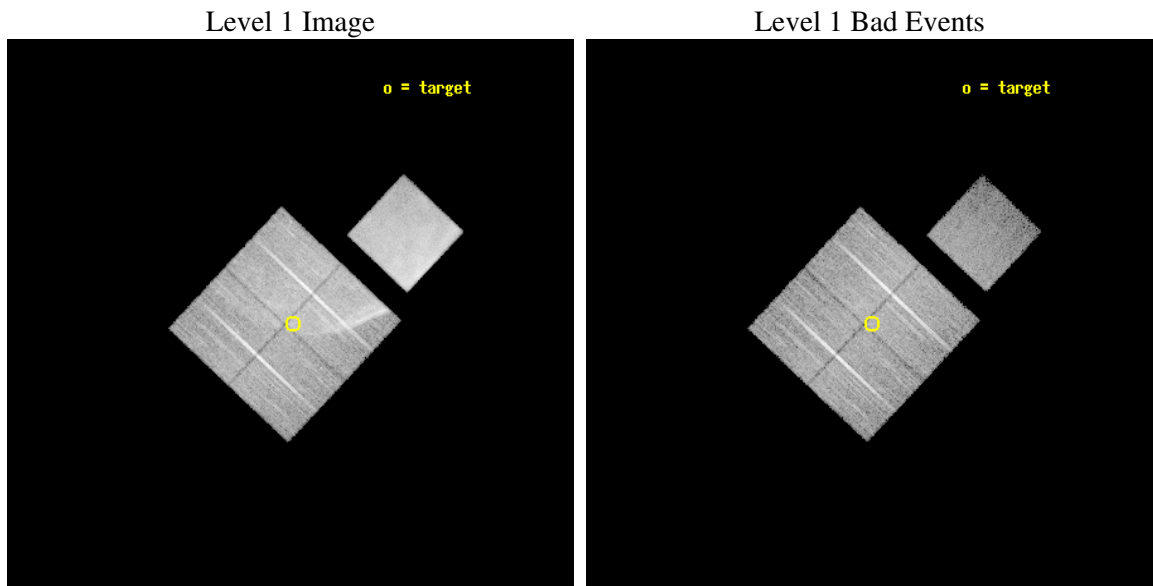
seq_num	500317
obs_id	4386
title	STUDYING HIGH MACH NUMBER SHOCKS IN YOUNG SUPERNOVA REMNANTS WITH CHANDRA
observer	Prof. John Hughes
object	SN1006
dtcycle	0
cycle	P
ra_targ	225.770792
dec_targ	-42.1667
ra_nom	225.77663619948
dec_nom	-42.165096703336
roll_nom	43.21260806581
revision	2
ontime	20056.999961436
livetime	19794.940491191
ontime0	20056.999961436
ontime1	20056.999961436
ontime2	20050.718130469
ontime3	20056.999961436
ontime7	20056.999961436
l2events	241754



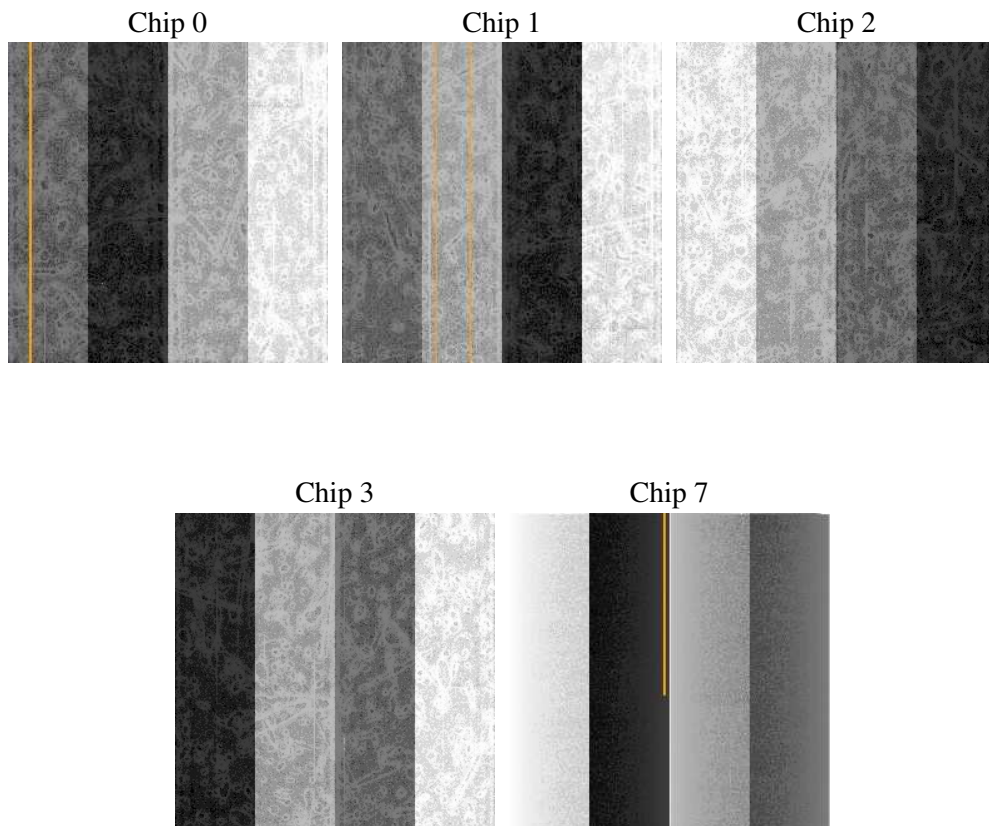
2 OBI

2.1 OBI

2.1.1 Images



2.1.2 Bias



2.1.3 Parameters

obi_num	0
ascdsver	7.6.8
caldsver	3.2.2
date	2006-07-30T09:11:39
revision	2

sched_exp_time	20280.000000
ontime	20061.624706805
ontime0	20061.624706805
ontime1	20061.624706805
ontime2	20055.342875838
ontime3	20061.624706805
ontime7	20061.624706805
l1events	675510

2.1.4 Events

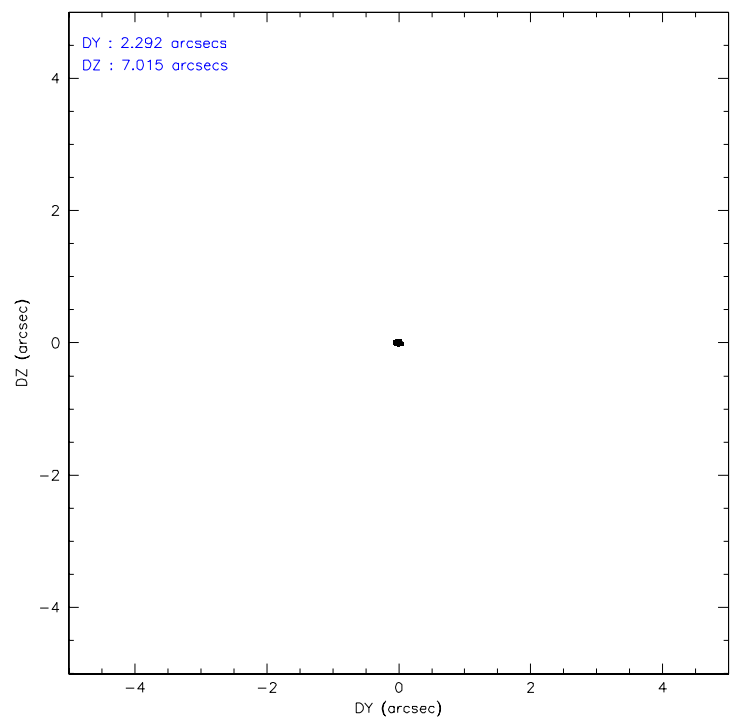
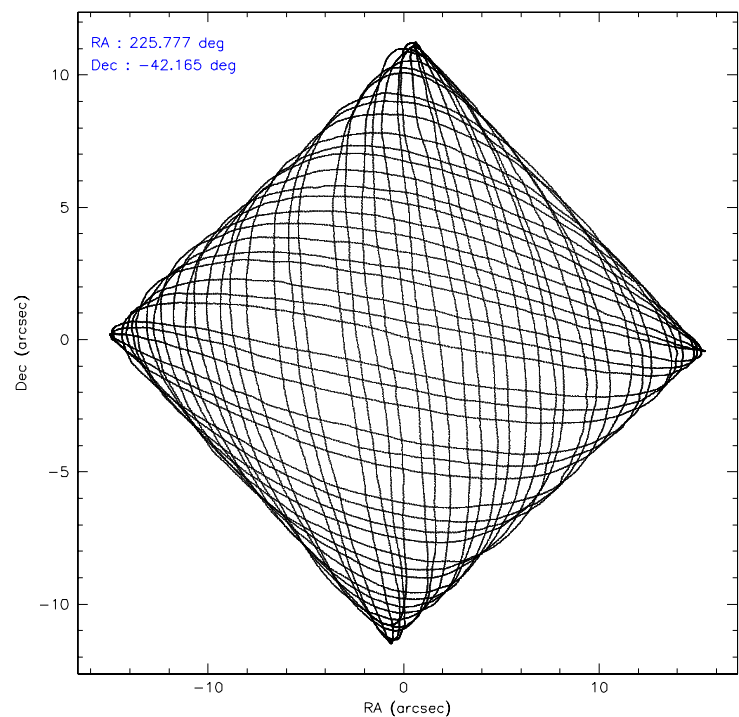
	ccd 0	ccd 1	ccd 2	ccd 3	ccd 7
level 1 events	104696	98355	135687	145351	191421
rejected events	85583	86848	99346	95302	54765
rejected %	81%	88%	73%	65%	28%

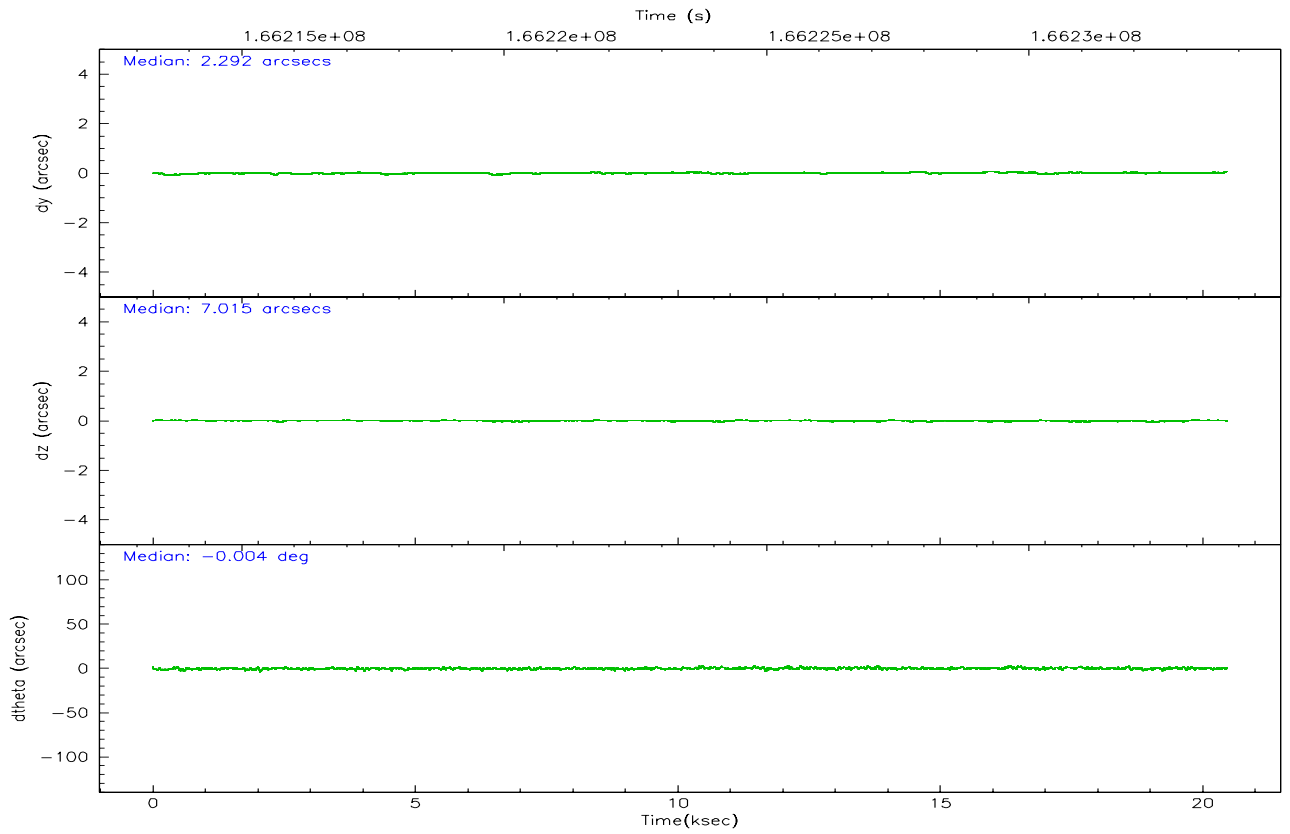
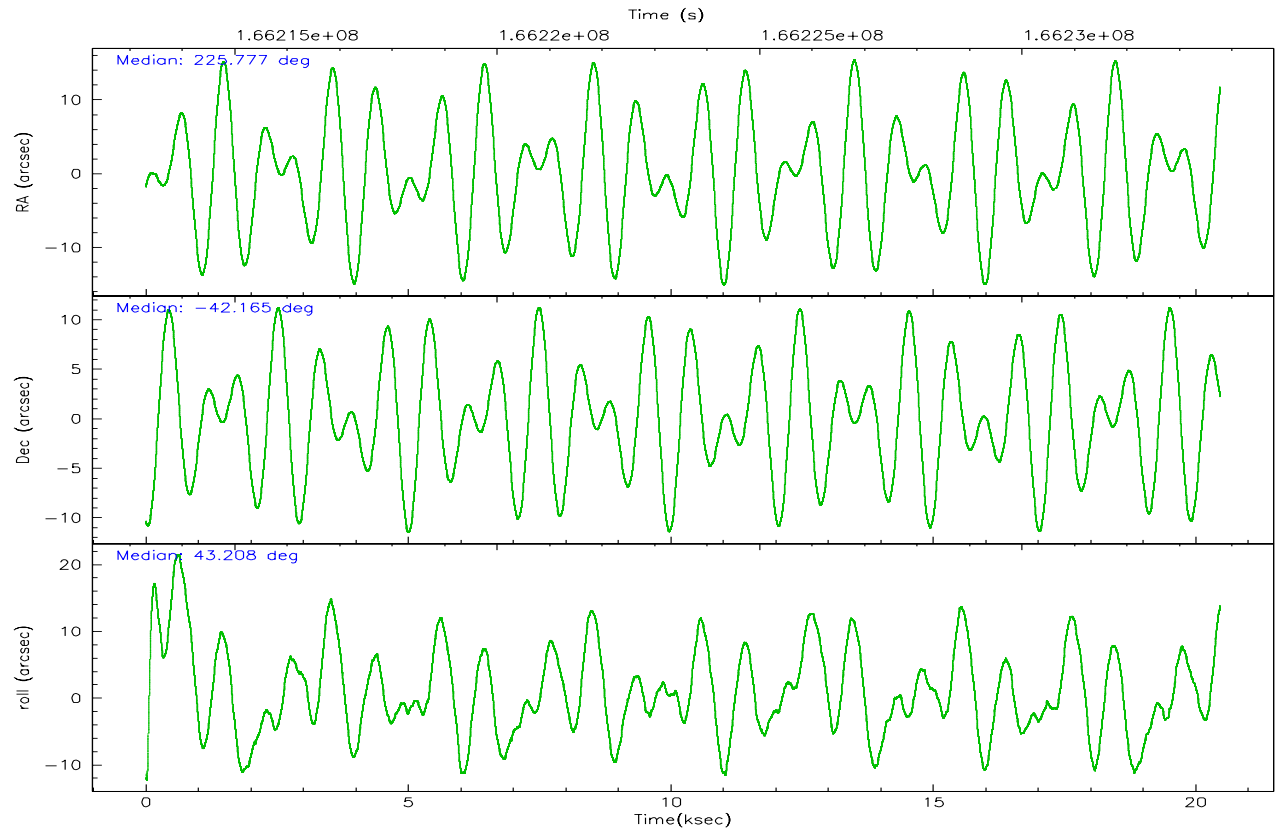
	ccd 0	ccd 1	ccd 2	ccd 3	ccd 7
grade 0 events	11678	4665	27635	39078	34112
	11%	4%	20%	26%	17%
grade 1 events	71	49	181	169	70
	0%	0%	0%	0%	0%
grade 2 events	2952	2202	3944	5033	37677
	2%	2%	2%	3%	19%
grade 3 events	1374	1269	1392	1898	12862
	1%	1%	1%	1%	6%
grade 4 events	1192	1213	1427	1849	12659
	1%	1%	1%	1%	6%
grade 5 events	3059	3348	2986	3539	8235
	2%	3%	2%	2%	4%
grade 6 events	1920	2160	1949	2199	39369
	1%	2%	1%	1%	20%
grade 7 events	82450	83449	96173	91586	46437
	78%	84%	70%	63%	24%

2.2 Compared Parameters

Parameter	Planned	Actual	Parameter	Planned	Actual
Instrument	ACIS	ACIS	Obspar format version number	6	6
Detector	ACIS-01237	ACIS-01237	Obspar file type	PREDICTED	ACTUAL
Grating	NONE	NONE	Obspar update status	NONE	UPDATED
Data mode	VFAINT	VFAINT	On-chip summing requested	N	N
Observation mode	POINTING	POINTING	Subarray requested	NONE	NONE
Pointing RA	225.766138	225.7766361994774	Alternating exposures requested	N	N
Pointing Dec	-42.191339	-42.16509670333557	Primary exposure time	0.000000	3.1
Pointing Roll	42.996878	43.21260806580951			
SIM focus pos (mm)	-0.782348	-0.7809083437167272			
SIM defocus (mm)	0	0.001439871863259334			
SIM translation stage pos (mm)	-233.592463	-233.5874344608287			
SIM translation stage offset (mm)	0	-0.005018542100998502			
Observation start time	166213499.184000	166213123.12215			
Observation start date	2003-04-08T18:23:55	2003-04-08T18:18:43			
Observation end time	166233779.184000	166233913.19803			
Observation end date	2003-04-09T00:01:55	2003-04-09T00:05:13			
Read mode	TIMED	TIMED			

2.3 Aspect



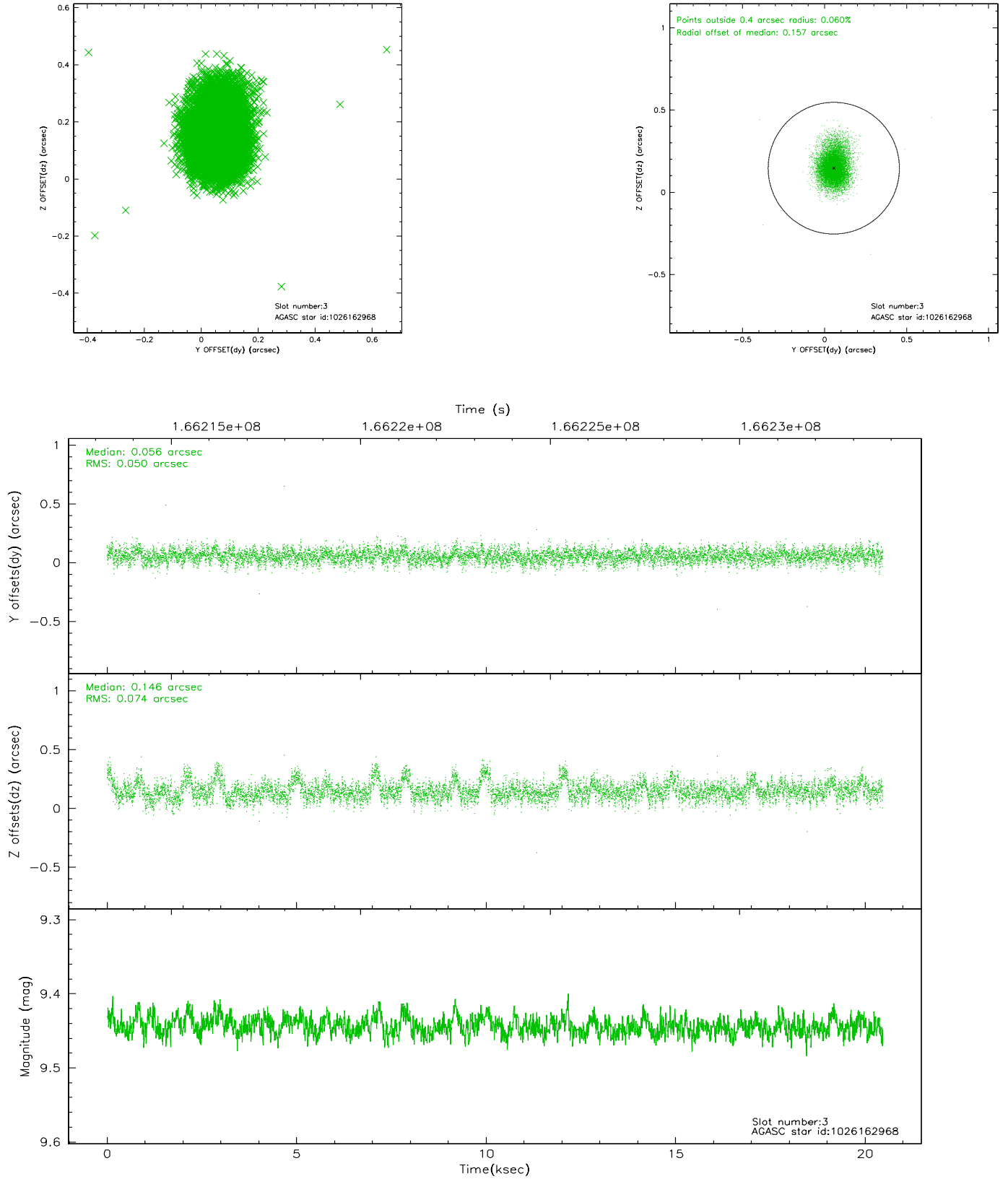


Slot Statistics

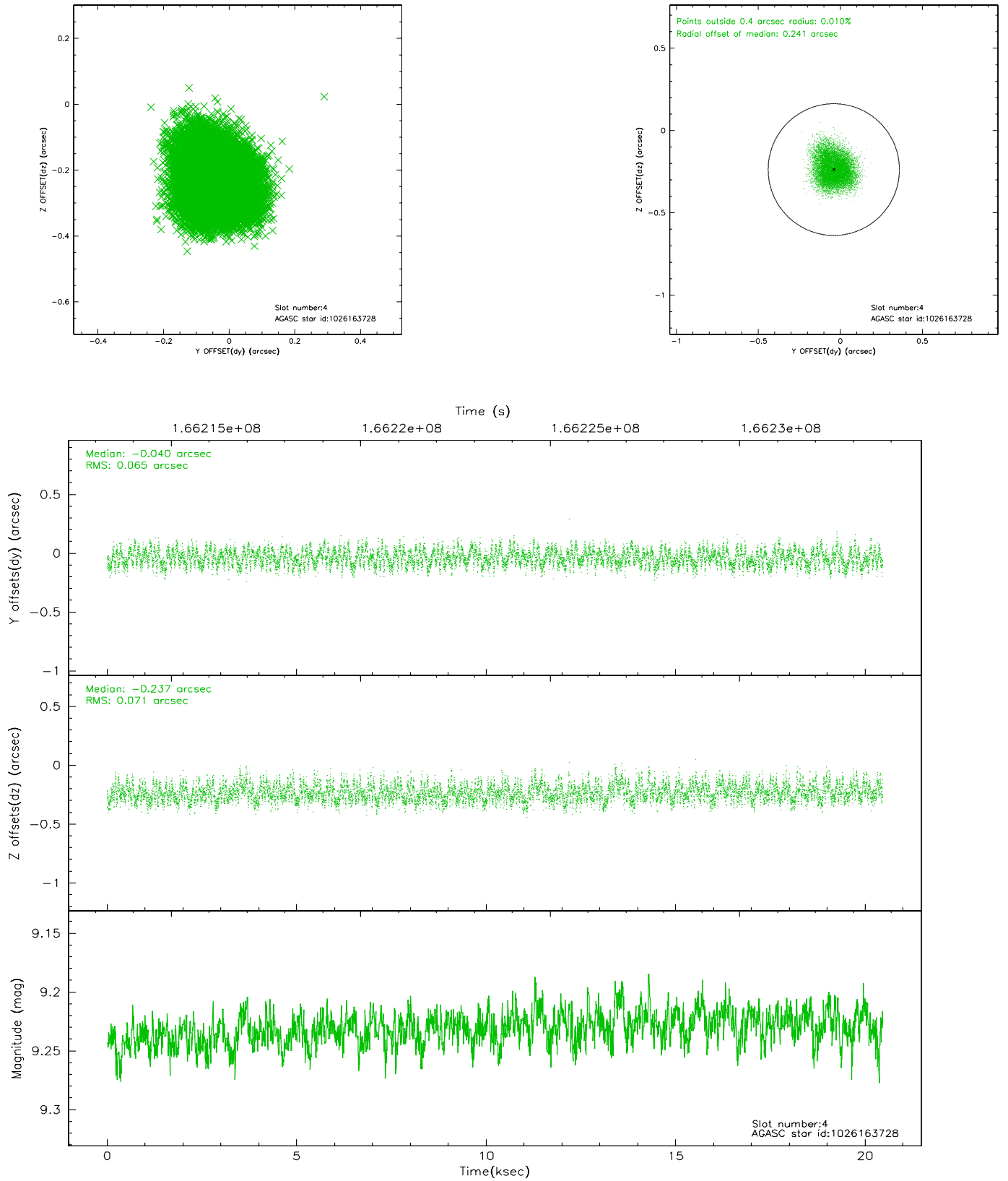
slot	status	id	mag	n_pts	med_dy	med_dz	dr1	dr2	ra	dec	mean_y	mean_z
0	FID	ACIS-I-1	7.25	4990	-0.085	0.015	0.009	0.016	0.000000	0.000000	937.46	-830.37
1	FID	ACIS-I-2	7.16	4991	-0.024	-0.005	0.007	0.011	0.000000	0.000000	-756.47	-836.96
2	FID	ACIS-I-4	7.17	4991	0.011	0.058	0.006	0.010	0.000000	0.000000	2157.31	1069.42
3	GUIDE	1026162968	9.44	9978	0.056	0.146	0.091	0.160	225.835985	-42.679852	-1063.74	-1412.30
4	GUIDE	1026163728	9.23	9980	-0.040	-0.237	0.104	0.160	225.377558	-41.568164	762.77	2352.54
5	GUIDE	1026170368	9.31	9979	0.095	0.071	0.079	0.128	225.763429	-42.291155	-249.78	-257.58
6	GUIDE	1026170800	9.02	9981	0.088	-0.058	0.073	0.118	225.400024	-42.381702	-1180.49	161.05
7	GUIDE	1026183784	9.19	9969	-0.199	0.070	0.086	0.153	226.363370	-41.841537	2026.52	-175.11

2.4 Star Slots

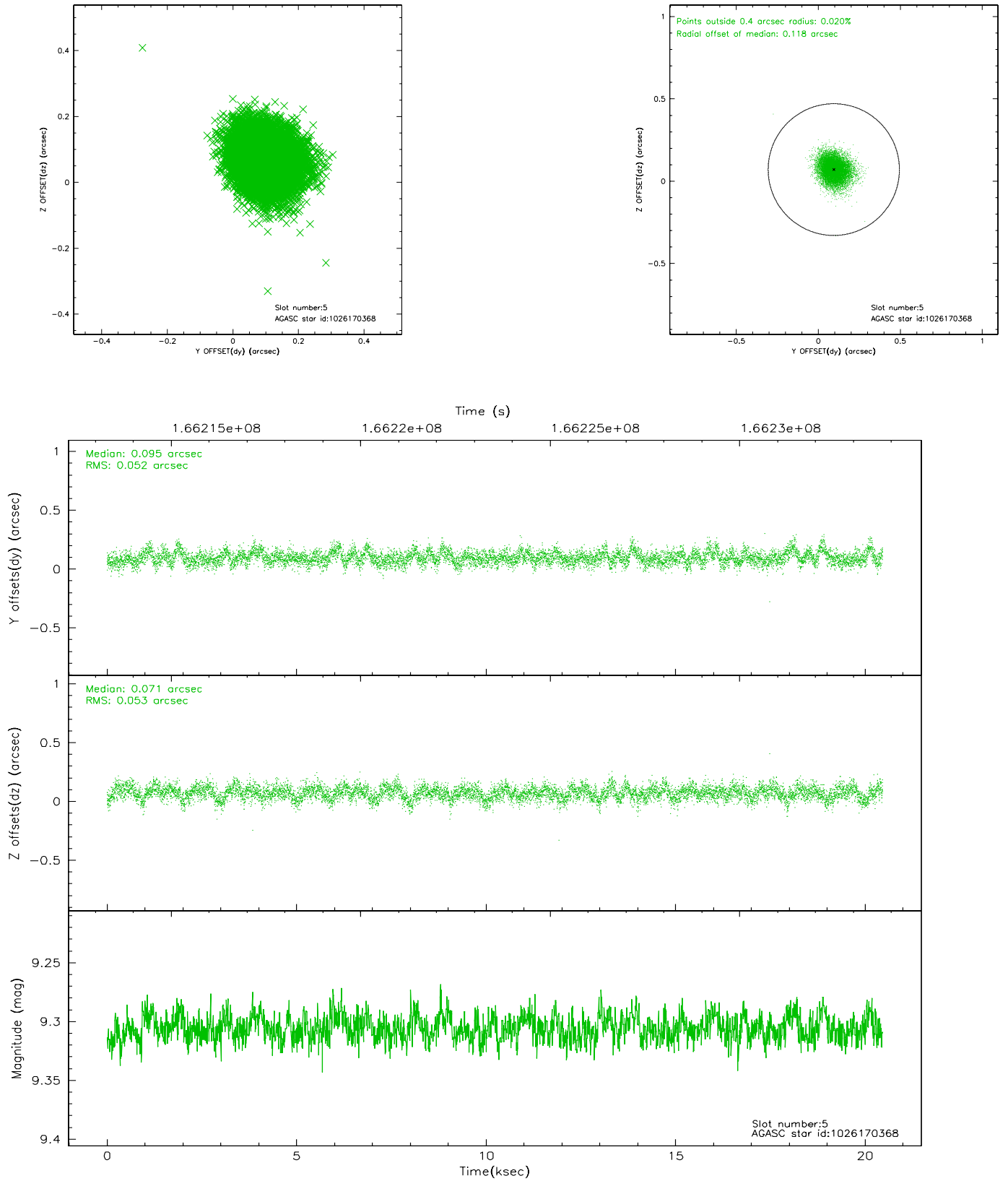
2.4.1 Slot 3



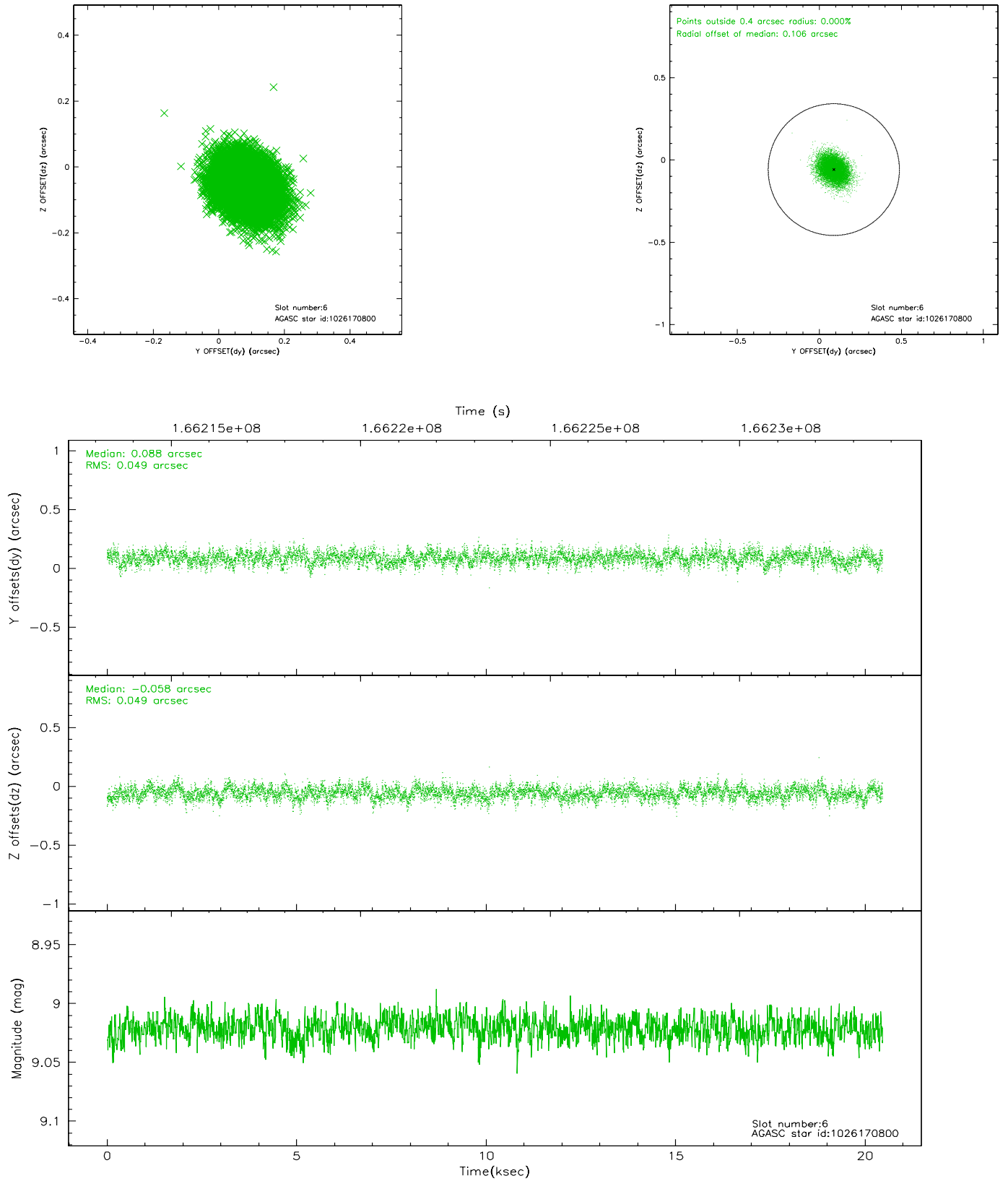
2.4.2 Slot 4



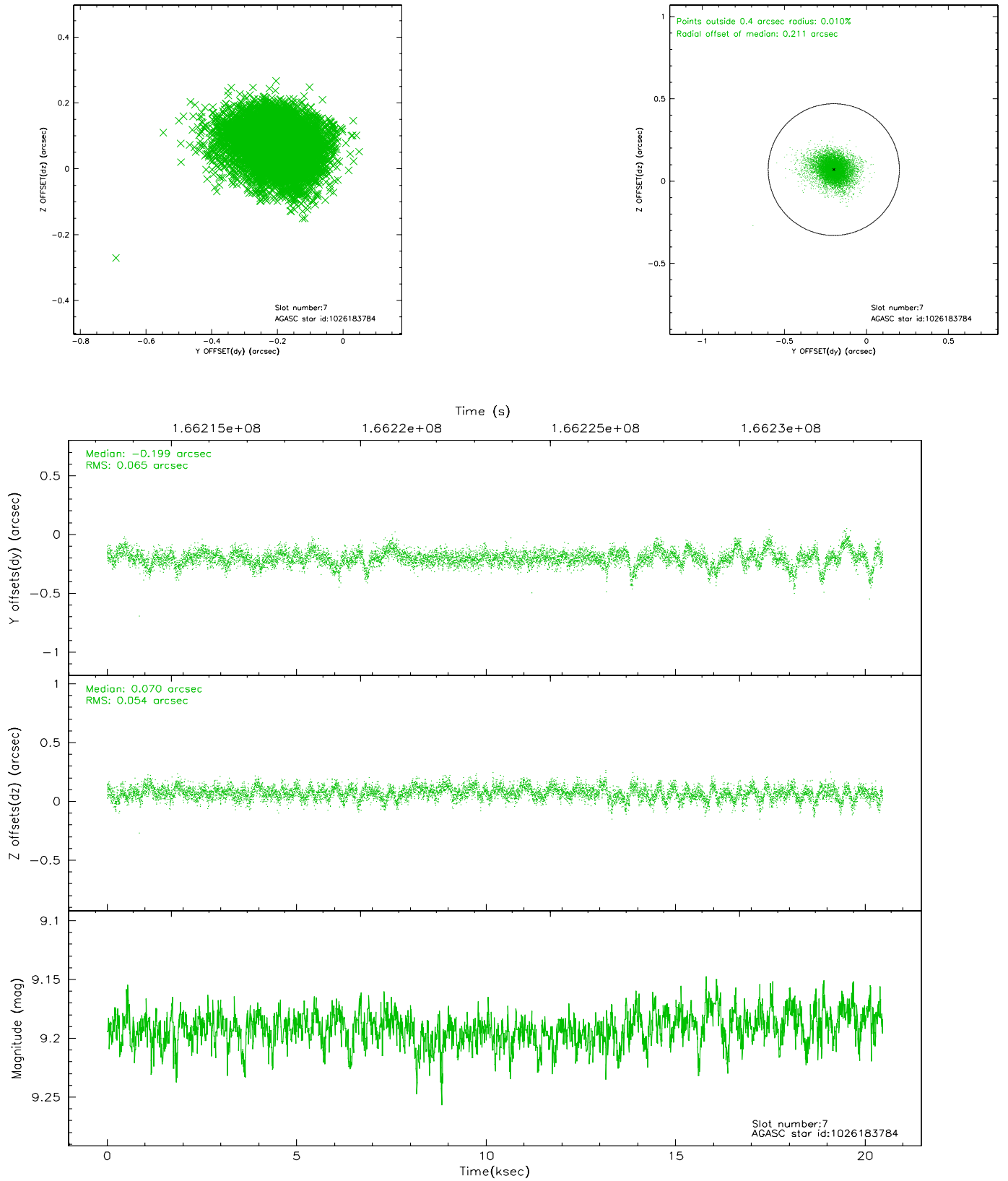
2.4.3 Slot 5



2.4.4 Slot 6

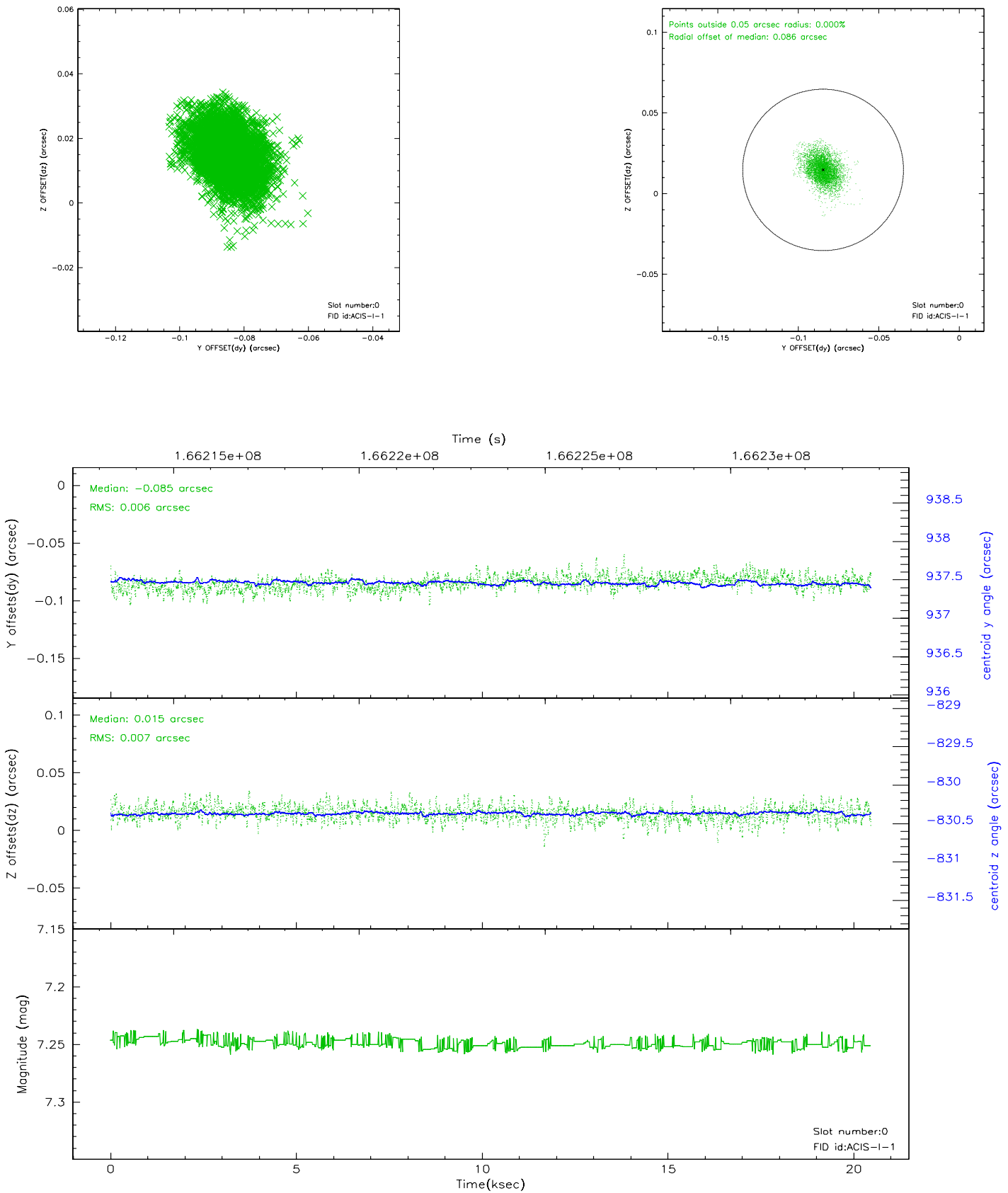


2.4.5 Slot 7

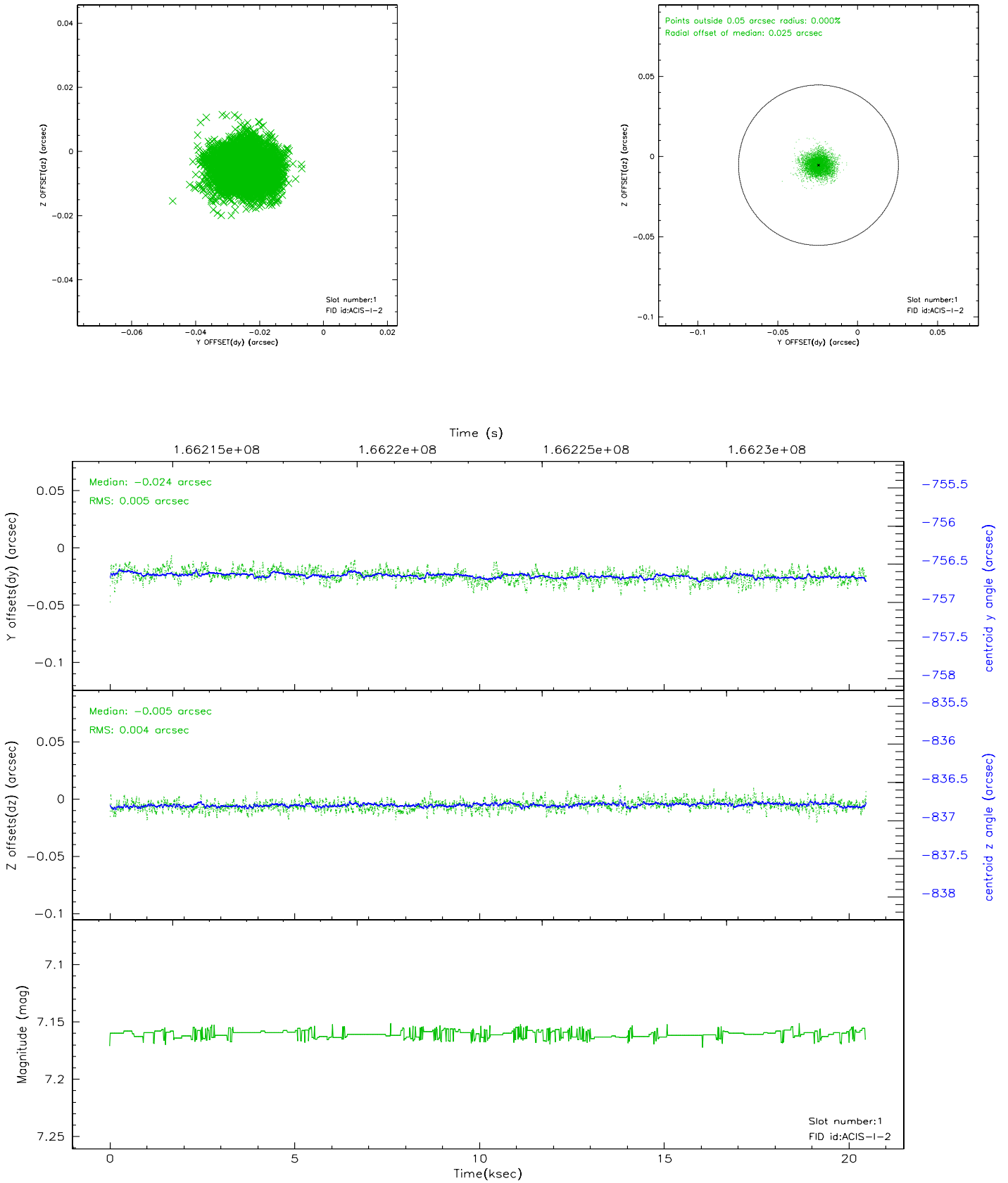


2.5 FID Slots

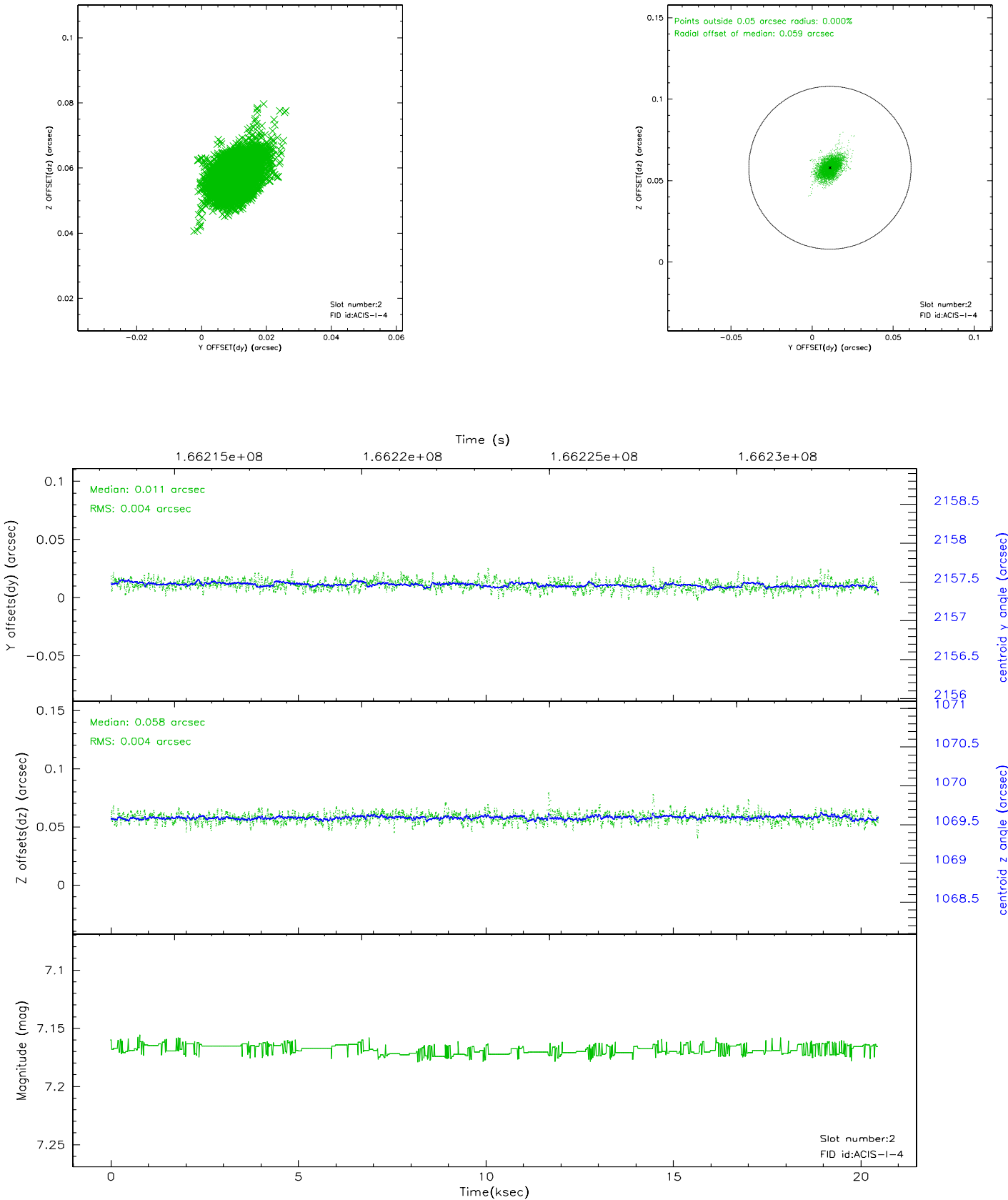
2.5.1 Slot 0



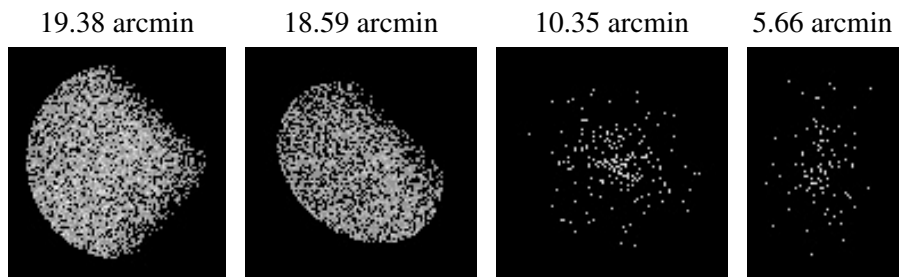
2.5.2 Slot 1



2.5.3 Slot 2



3 Point Sources



A Summary

A.1 Status

V&V Scientist	Jen Lauer
V&V Date (YYYY-MM-DD)	2006.07.30
V&V Edition	1
V&V Disposition and Status	OK
V&V Charge Time	20.056

A.2 Comments