

V&V Reference Report

L2 ASCDS Version : 7.6.8

Observation 4266 - L2 Version 001
Chandra X-Ray Center

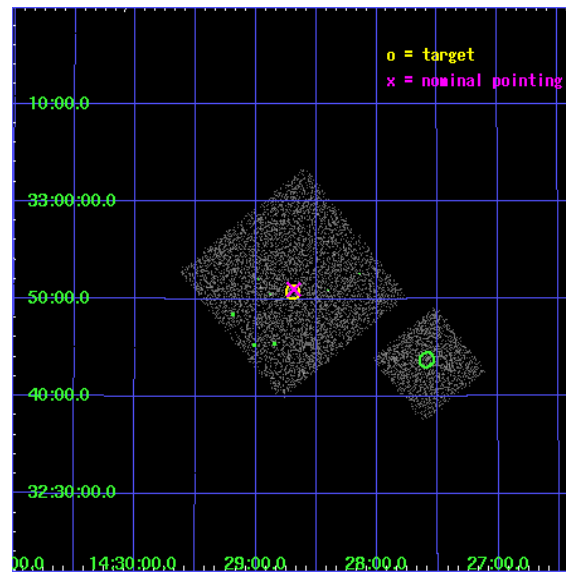
L2 Processing Date : Jul 30 2006

Contents

1	Front	2
2	OBI	3
2.1	OBI	3
2.1.1	Images	3
2.1.2	Bias	3
2.1.3	Parameters	4
2.1.4	Events	4
2.2	Compared Parameters	5
2.3	Aspect	6
2.4	Star Slots	9
2.4.1	Slot 3	9
2.4.2	Slot 4	10
2.4.3	Slot 5	11
2.4.4	Slot 6	12
2.4.5	Slot 7	13
2.5	FID Slots	14
2.5.1	Slot 0	14
2.5.2	Slot 1	15
2.5.3	Slot 2	16
3	Point Sources	17
A	Summary	18
A.1	Status	18
A.2	Comments	18

1 Front

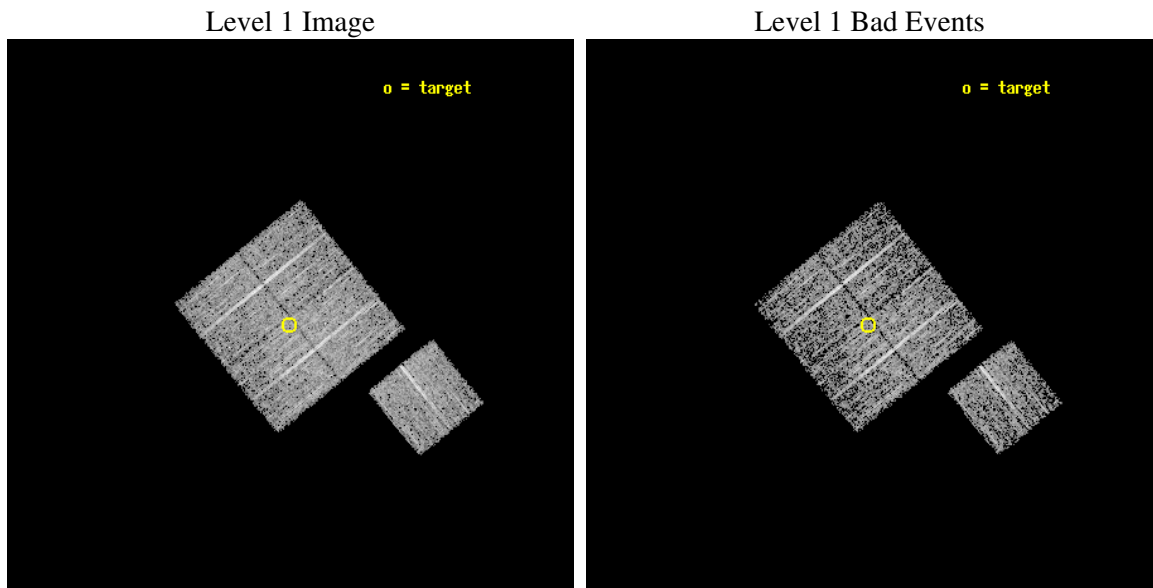
seq_num	900309
obs_id	4266
title	A CHANDRA WIDE-FIELD SURVEY TO MAP THE COSMIC WEB AND INVESTIGATE THE EVOLUTION OF NUCLEAR ACCRETION
observer	Dr. Christine Jones
object	SS43
dtcycle	0
cycle	P
ra_targ	217.17418
dec_targ	32.845836
ra_nom	217.17155828144
dec_nom	32.849884162239
roll_nom	141.01010785172
revision	2
ontime	4578.6999911964
livetime	4518.8759050215
ontime0	4578.6999911964
ontime1	4578.6999911964
ontime2	4578.6999911964
ontime3	4578.6999911964
ontime6	4578.6999911964
l2events	9499



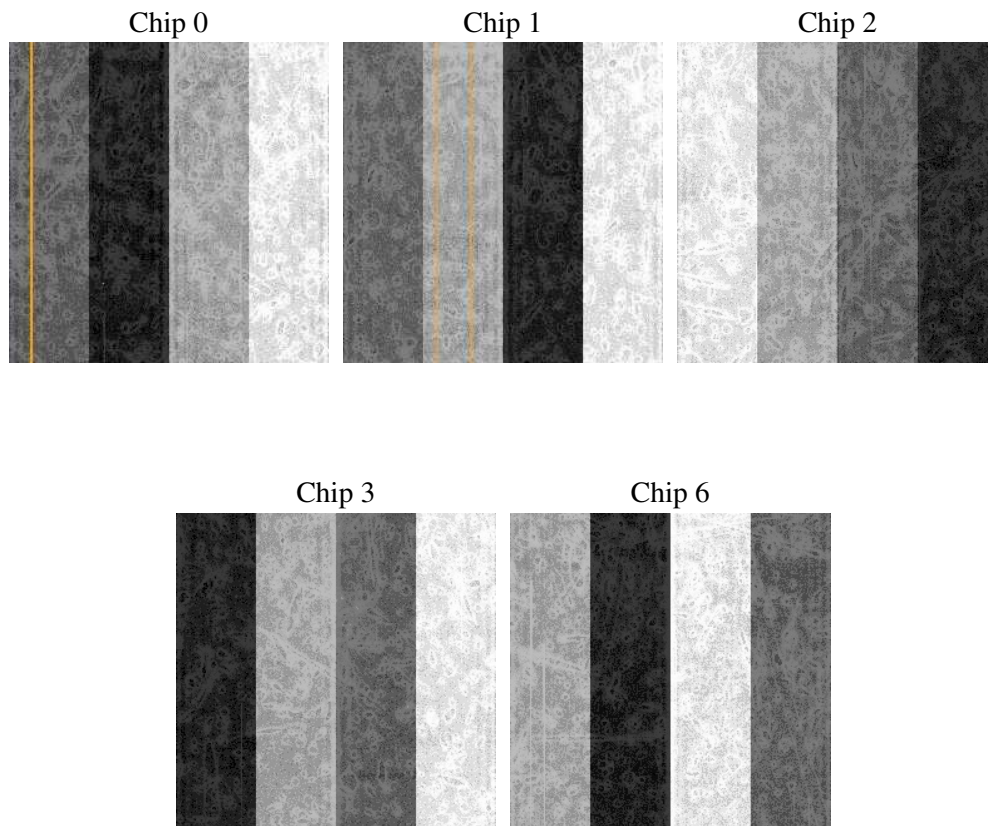
2 OBI

2.1 OBI

2.1.1 Images



2.1.2 Bias



2.1.3 Parameters

obi_num	1
ascdsver	7.6.8
caldbver	3.2.2
date	2006-07-30T07:36:57
revision	2

sched_exp_time	4800.000000
ontime	4582.7258334458
ontime0	4582.7258334458
ontime1	4582.7258633375
ontime2	4582.7258633375
ontime3	4582.7258334458
ontime6	4582.7258334458
l1events	114578

2.1.4 Events

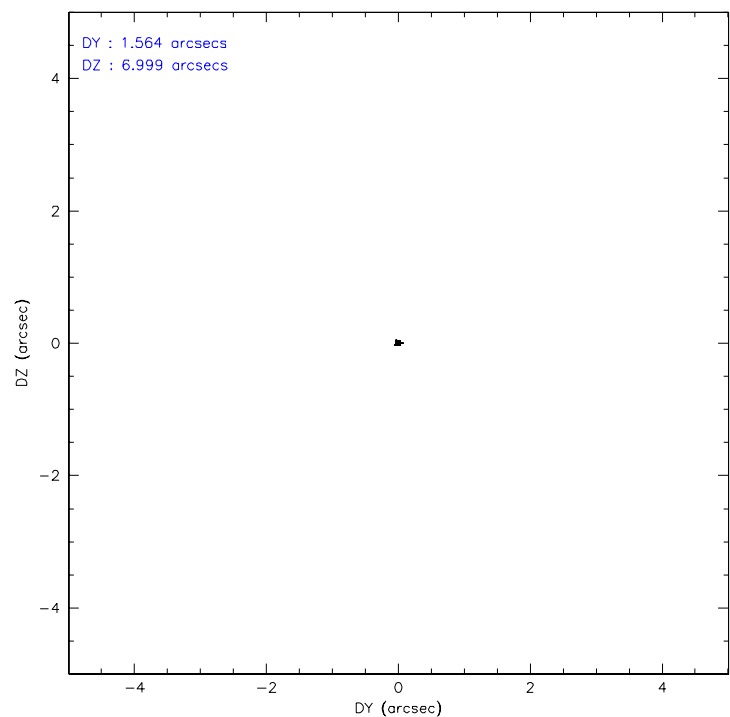
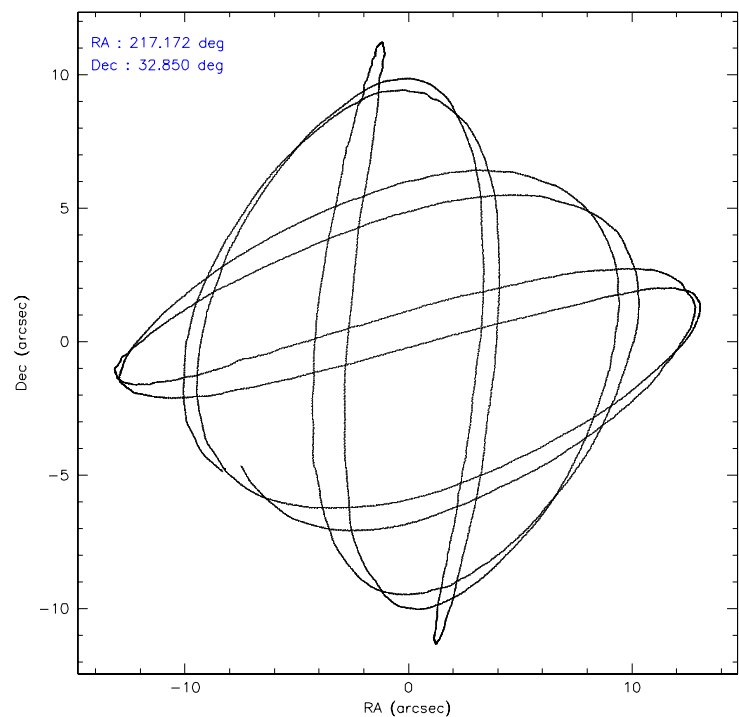
	ccd 0	ccd 1	ccd 2	ccd 3	ccd 6
level 1 events	20952	21972	25268	23498	22888
rejected events	18746	19477	22956	21312	20504
rejected %	89%	88%	90%	90%	89%

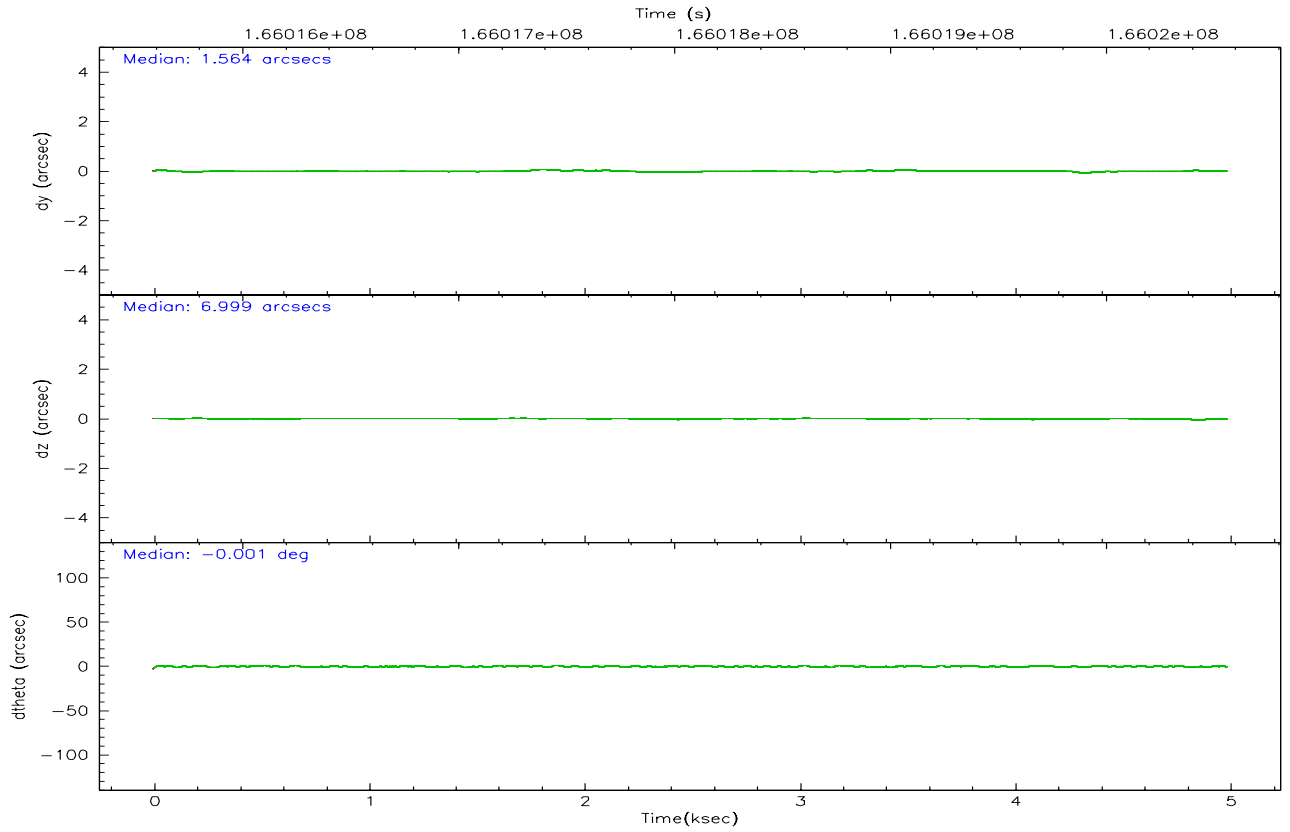
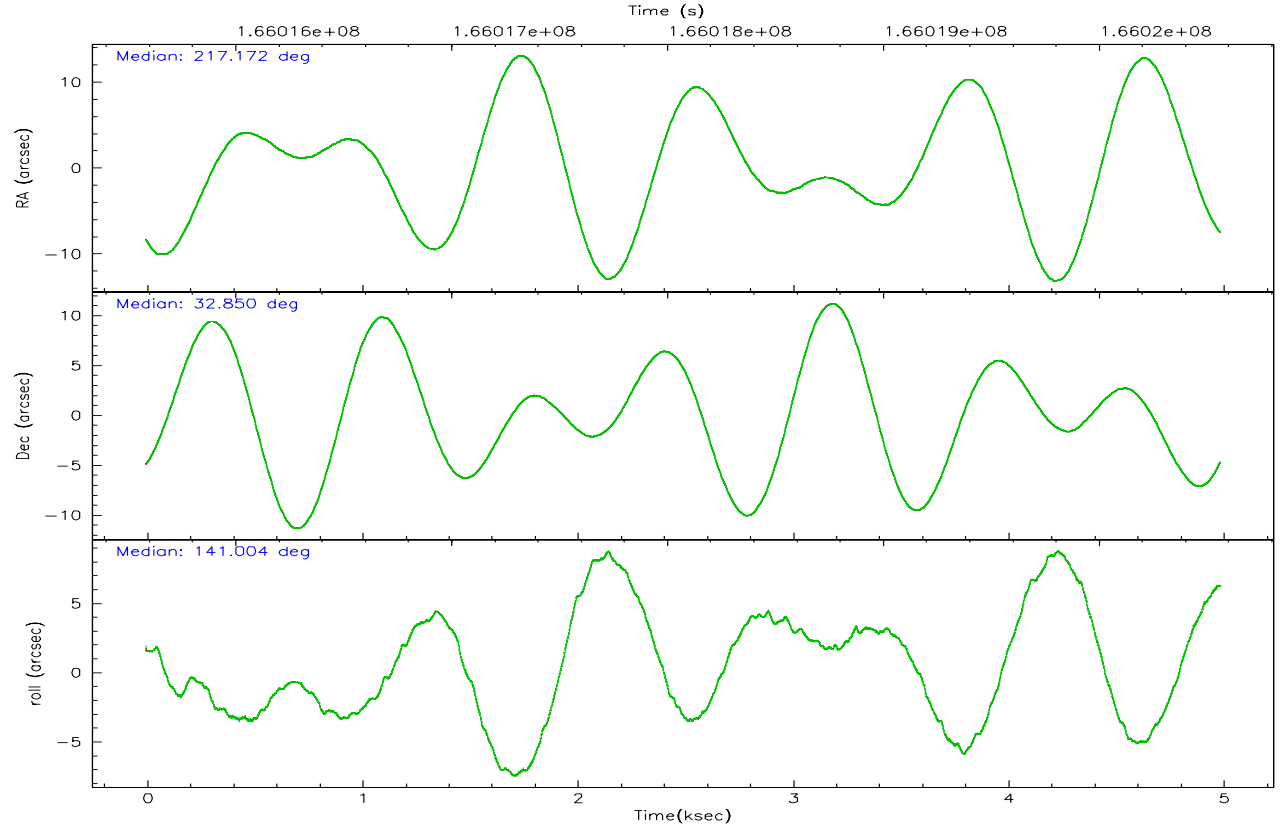
	ccd 0	ccd 1	ccd 2	ccd 3	ccd 6
grade 0 events	794	908	905	801	857
	3%	4%	3%	3%	3%
grade 1 events	10	12	10	13	7
	0%	0%	0%	0%	0%
grade 2 events	483	548	542	440	491
	2%	2%	2%	1%	2%
grade 3 events	292	302	274	277	288
	1%	1%	1%	1%	1%
grade 4 events	245	274	237	250	276
	1%	1%	0%	1%	1%
grade 5 events	665	720	628	774	758
	3%	3%	2%	3%	3%
grade 6 events	392	465	356	420	473
	1%	2%	1%	1%	2%
grade 7 events	18071	18743	22316	20523	19738
	86%	85%	88%	87%	86%

2.2 Compared Parameters

Parameter	Planned	Actual	Parameter	Planned	Actual
Instrument	ACIS	ACIS	Obspar format version number	6	6
Detector	ACIS-01236	ACIS-01236	Obspar file type	PREDICTED	ACTUAL
Grating	NONE	NONE	Obspar update status	NONE	UPDATED
Data mode	VFAINT	VFAINT	On-chip summing requested	N	N
Observation mode	POINTING	POINTING	Subarray requested	NONE	NONE
Pointing RA	217.203802	217.1715582814408	Alternating exposures requested	N	N
Pointing Dec	32.845754	32.84988416223881	Primary exposure time	0.000000	3.1
Pointing Roll	140.783932	141.0101078517188			
SIM focus pos (mm)	-0.782348	-0.7809083437167272			
SIM defocus (mm)	0	0.001439871863259334			
SIM translation stage pos (mm)	-233.592463	-233.5874344608287			
SIM translation stage offset (mm)	0	-0.005018542100998502			
Observation start time	166015765.184000	166015389.3388			
Observation start date	2003-04-06T11:28:21	2003-04-06T11:23:09			
Observation end time	166020565.184000	166020699.35153			
Observation end date	2003-04-06T12:48:21	2003-04-06T12:51:39			
Read mode	TIMED	TIMED			

2.3 Aspect



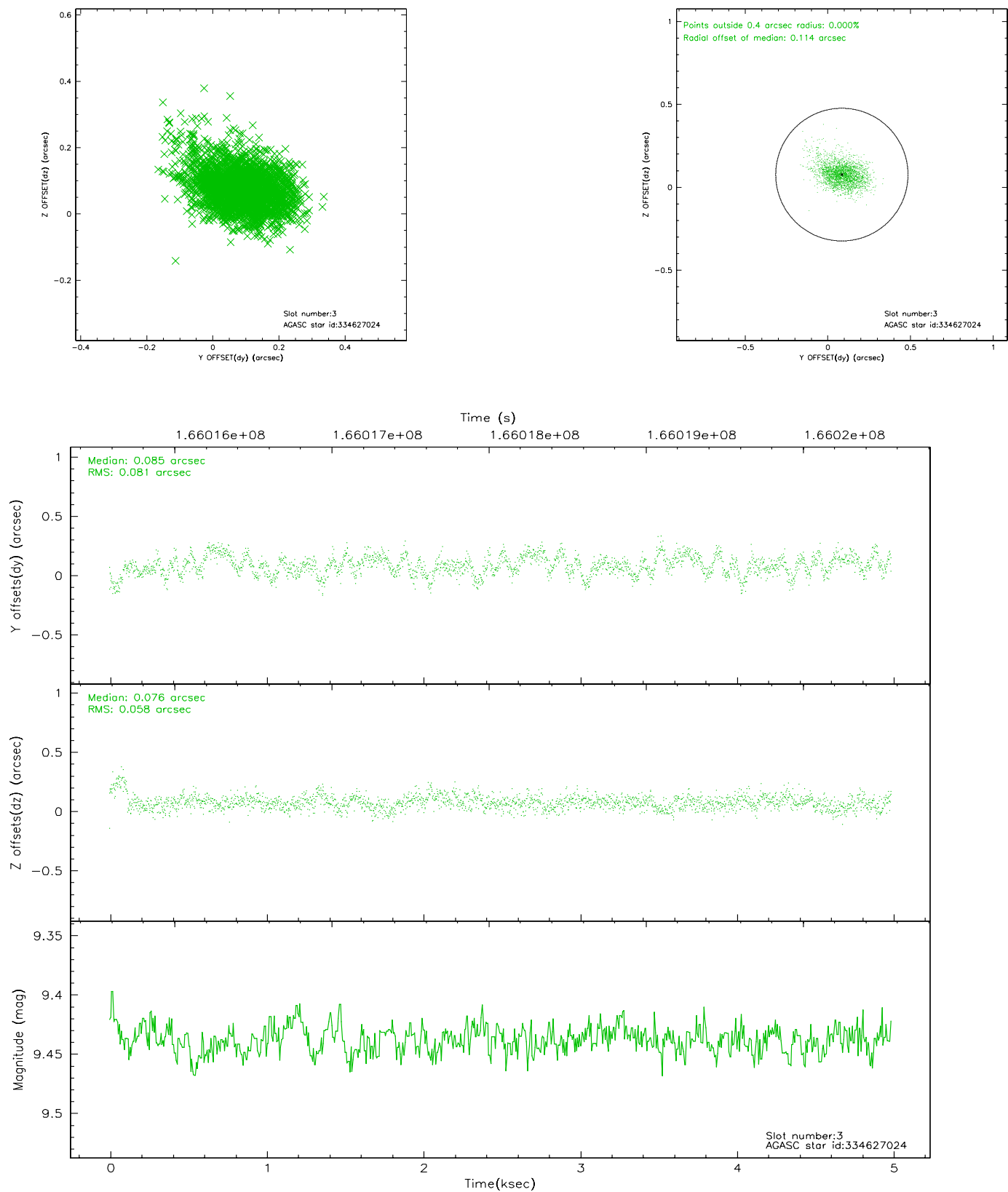


Slot Statistics

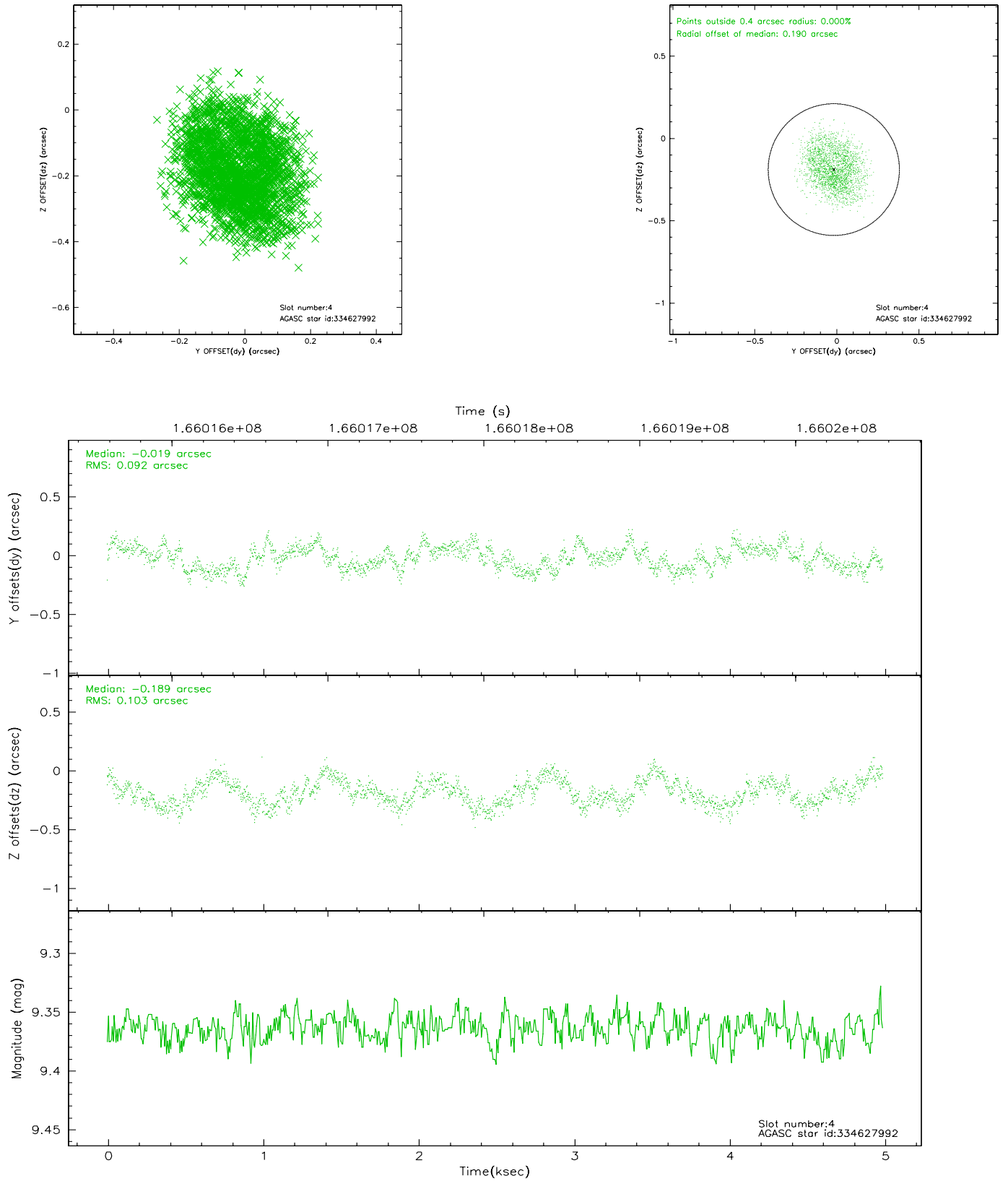
slot	status	id	mag	n_pts	med_dy	med_dz	dr1	dr2	ra	dec	mean_y	mean_z
0	FID	ACIS-I-1	7.25	1218	-0.011	0.038	0.006	0.010	0.000000	0.000000	938.23	-830.38
1	FID	ACIS-I-5	7.24	1217	-0.047	0.045	0.005	0.010	0.000000	0.000000	-1809.18	1066.58
2	FID	ACIS-I-6	7.26	1218	-0.033	-0.013	0.007	0.011	0.000000	0.000000	402.50	1712.35
3	GUIDE	334627024	9.44	2433	0.085	0.076	0.102	0.177	217.318801	32.278221	-1562.96	1361.39
4	GUIDE	334627992	9.36	2430	-0.019	-0.189	0.151	0.227	216.814353	32.274859	-380.48	2340.38
5	GUIDE	335021200	8.86	2432	-0.074	-0.060	0.079	0.128	216.377257	32.627867	1451.64	2185.66
6	GUIDE	335028240	9.18	2432	0.020	0.062	0.093	0.148	216.746851	33.385009	2294.48	-636.76
7	GUIDE	335029384	8.51	2434	-0.009	0.121	0.131	0.223	217.848061	33.088477	-948.27	-1910.46

2.4 Star Slots

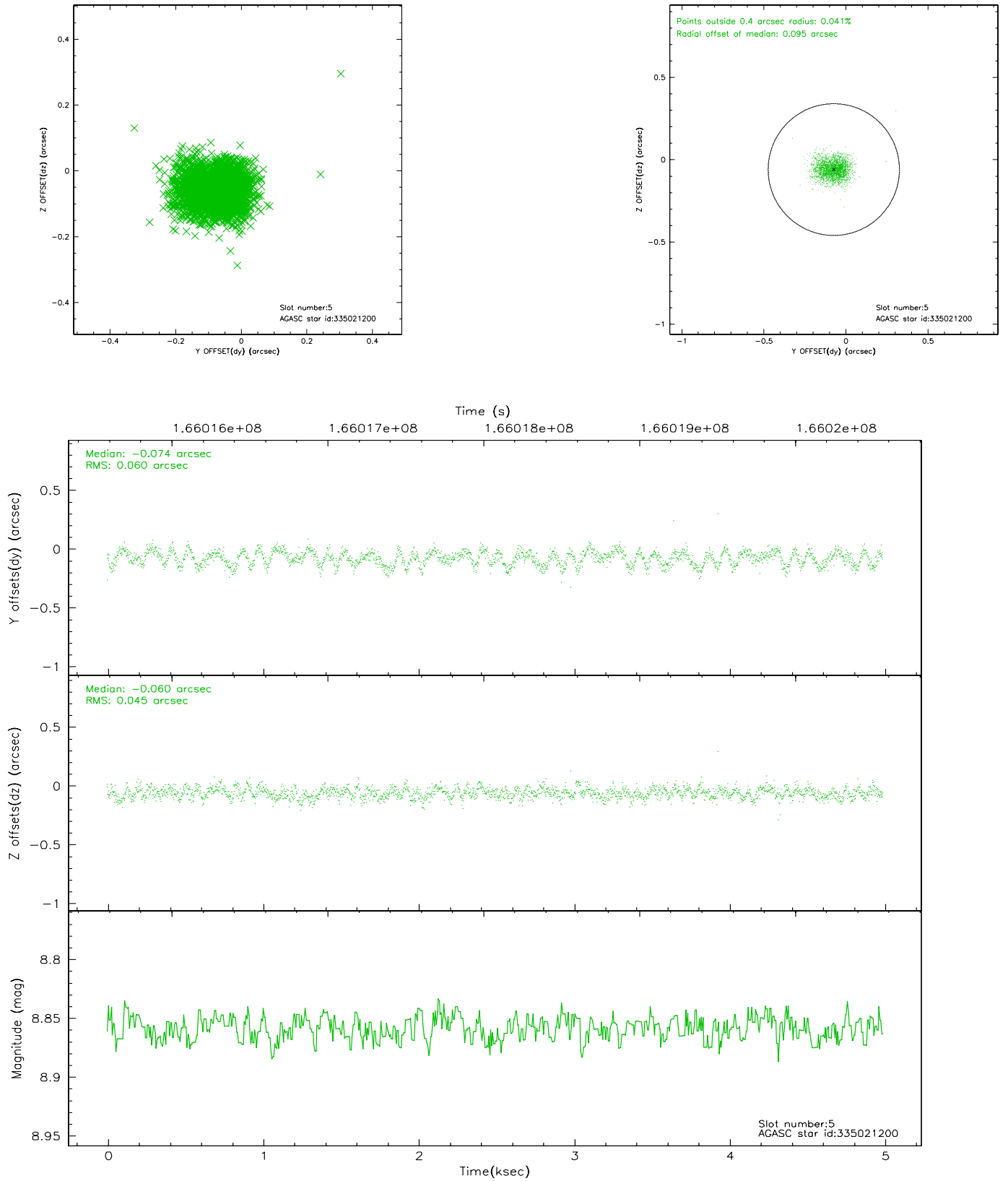
2.4.1 Slot 3



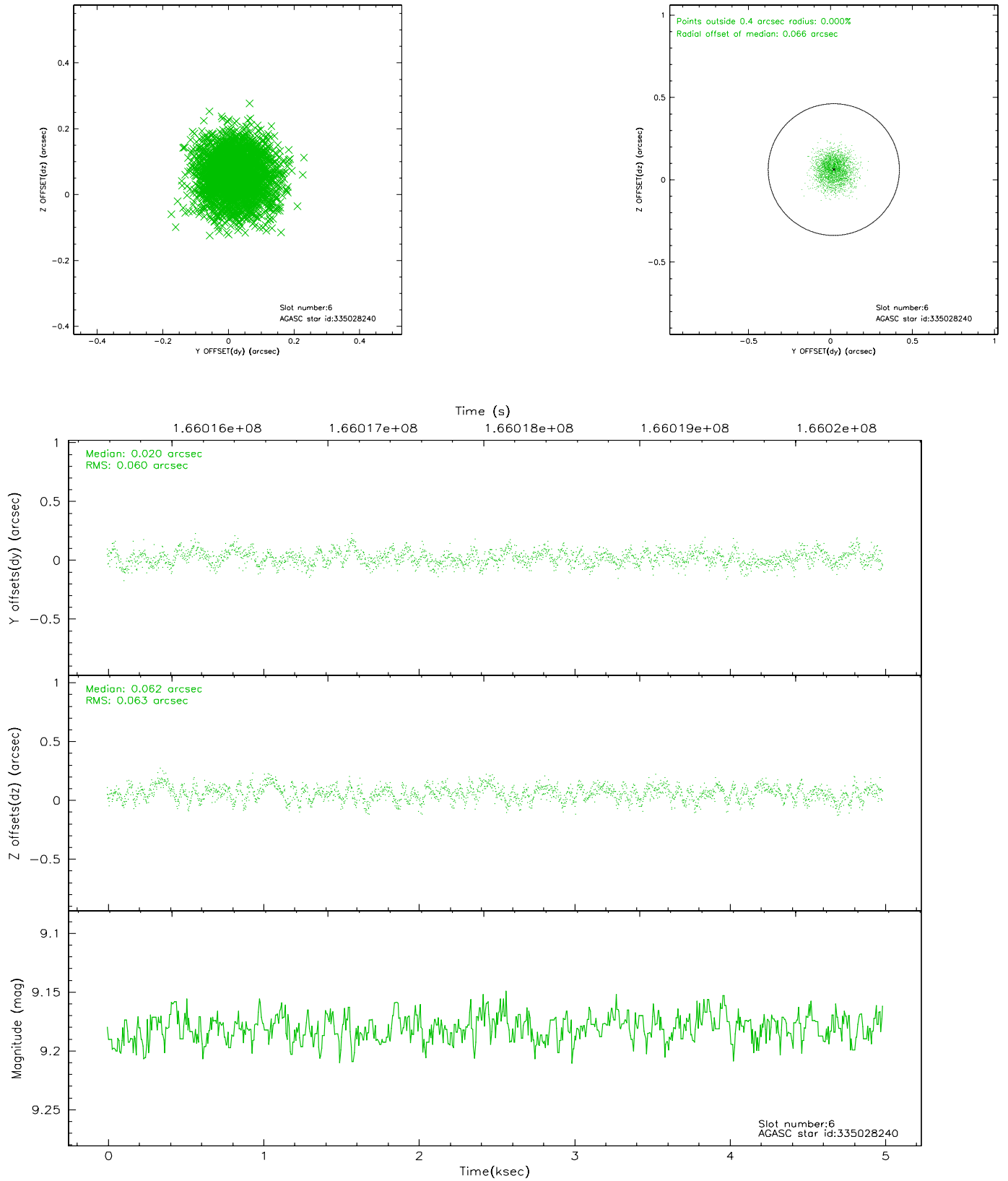
2.4.2 Slot 4



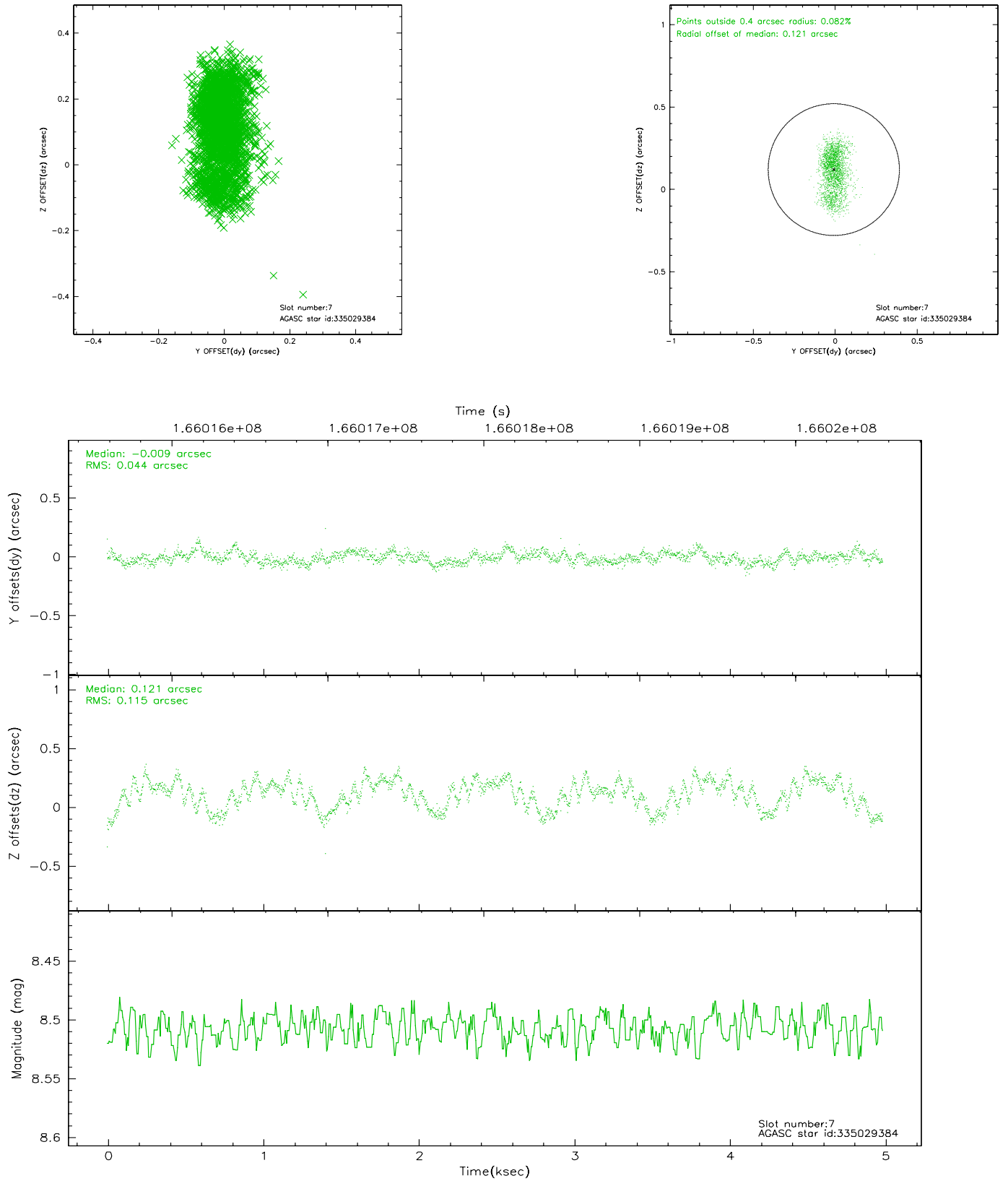
2.4.3 Slot 5



2.4.4 Slot 6

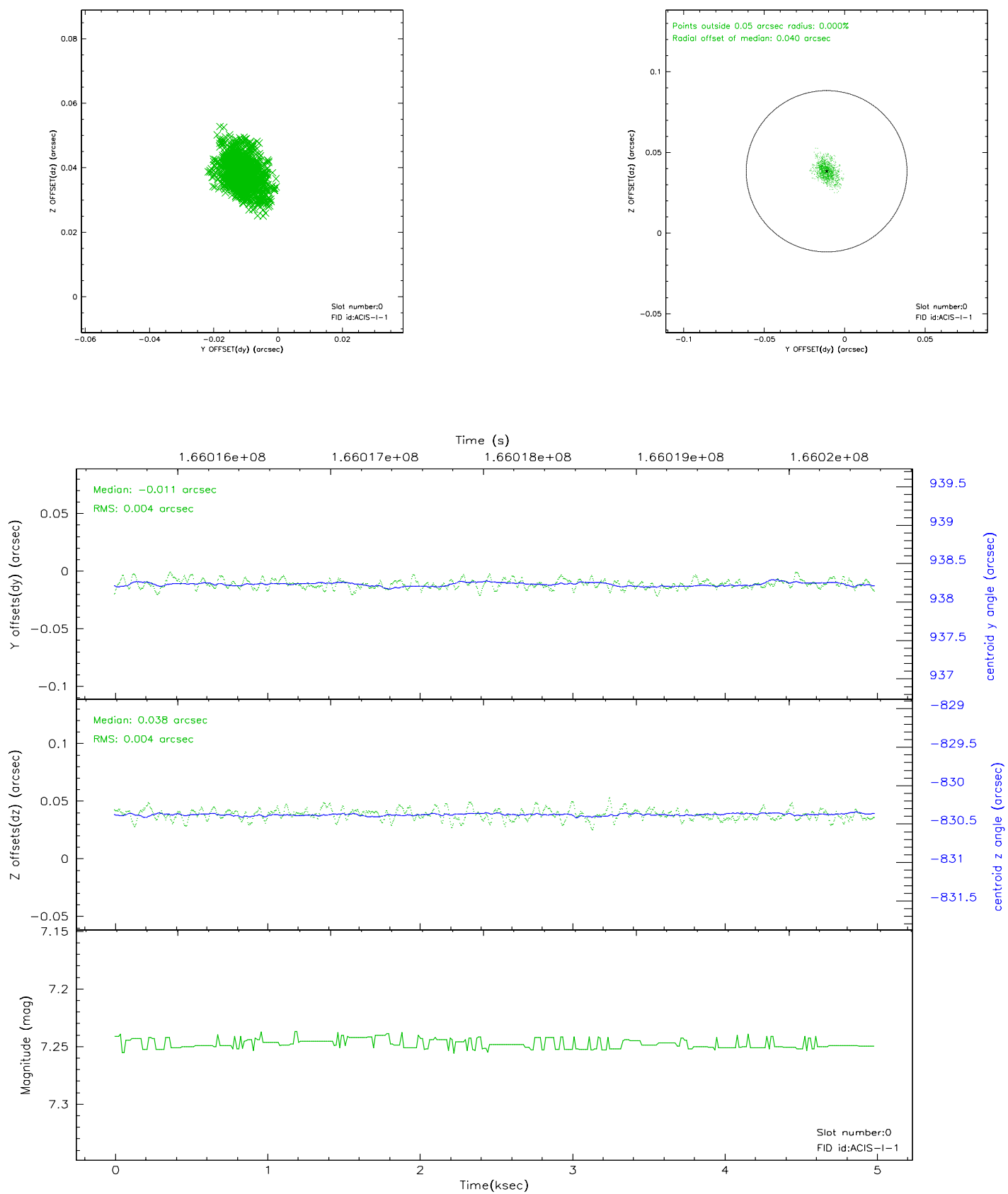


2.4.5 Slot 7

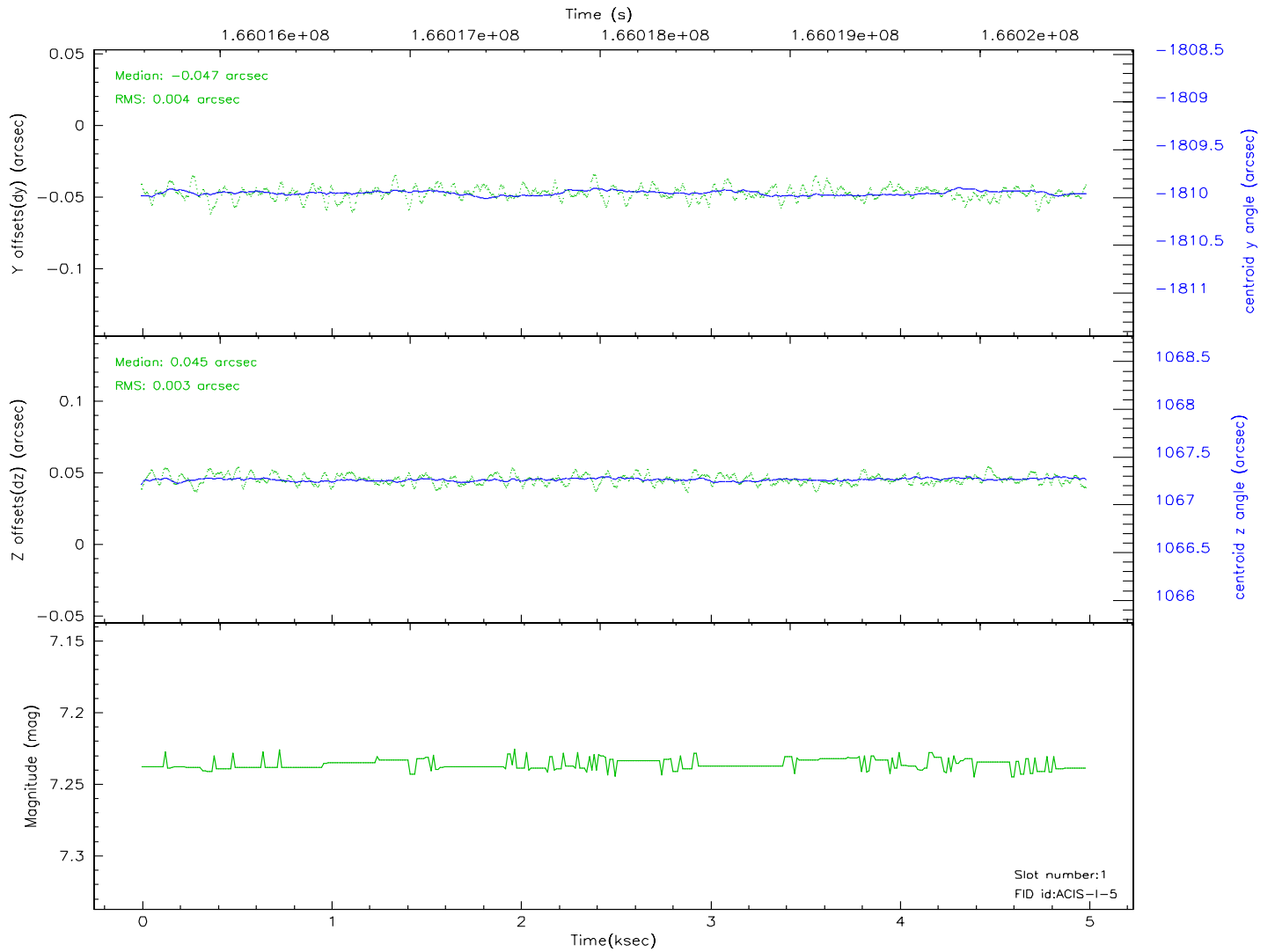
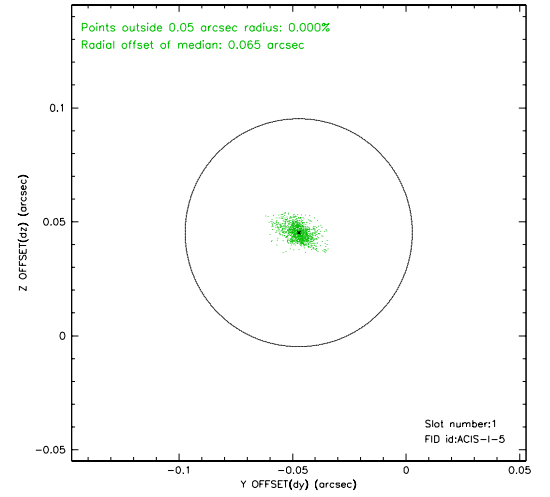
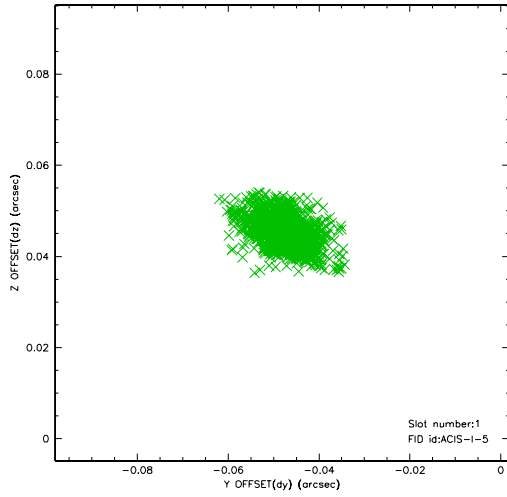


2.5 FID Slots

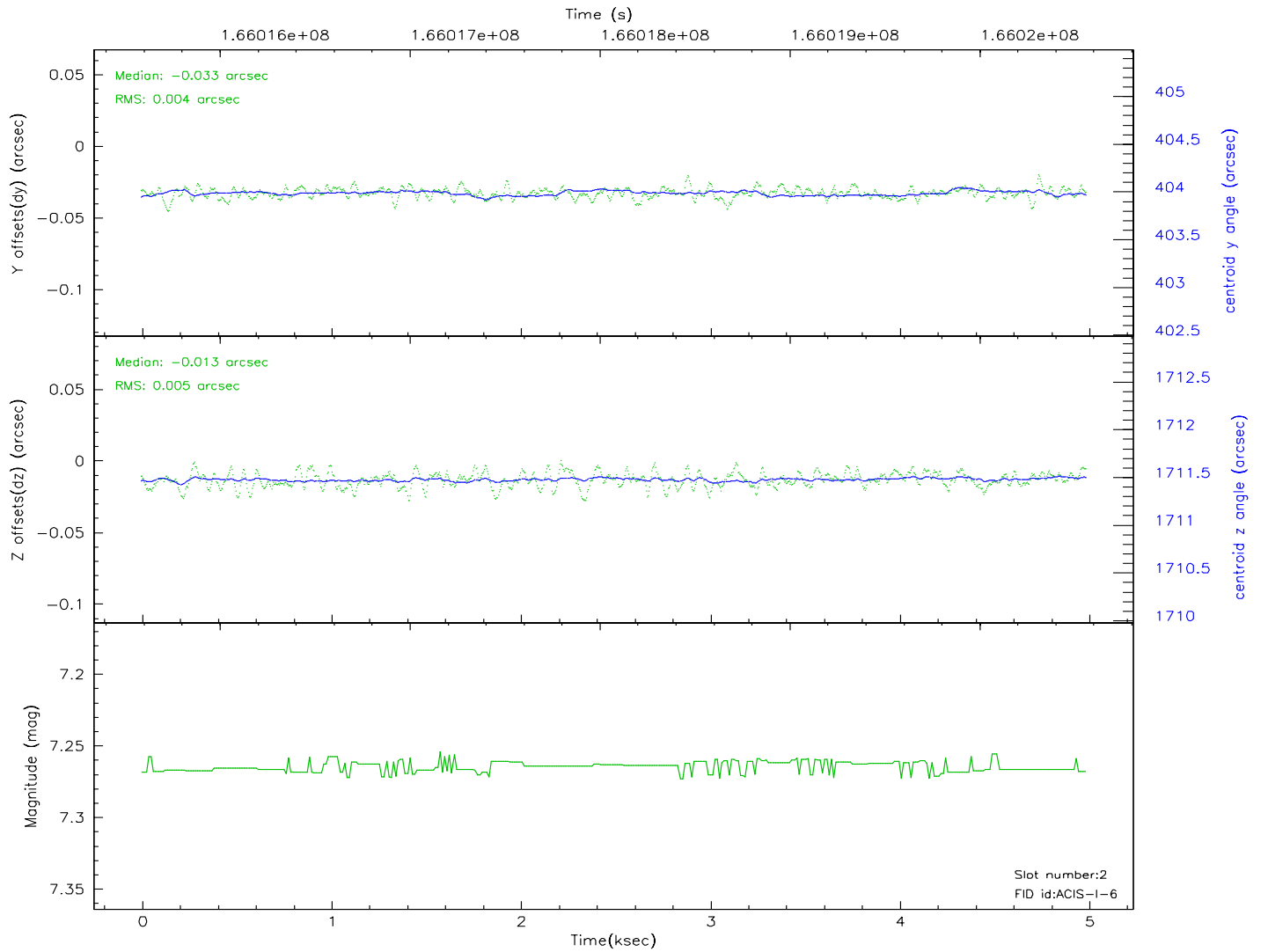
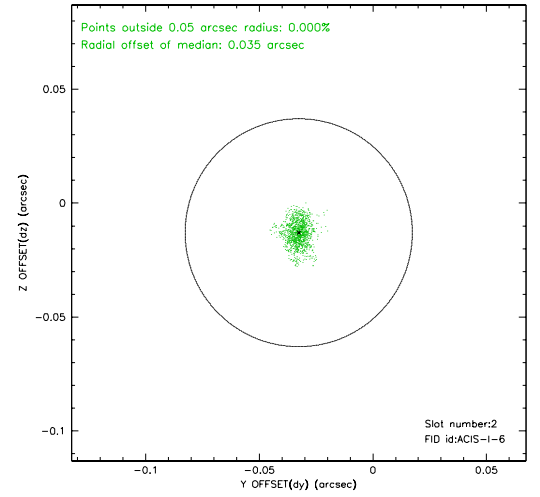
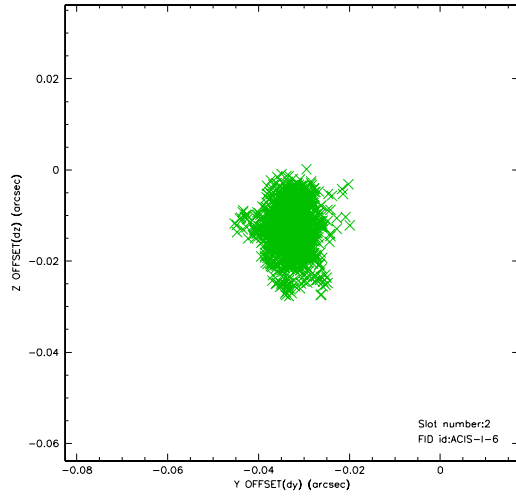
2.5.1 Slot 0



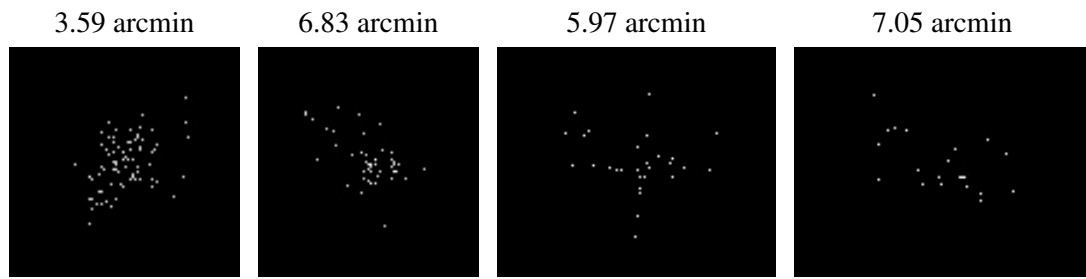
2.5.2 Slot 1



2.5.3 Slot 2



3 Point Sources



A Summary

A.1 Status

V&V Scientist	Jen Lauer
V&V Date (YYYY-MM-DD)	2006.07.30
V&V Edition	1
V&V Disposition and Status	OK
V&V Charge Time	4.578

A.2 Comments