

V&V Reference Report

L2 ASCDS Version : 8.4.5

Observation 4186 - L2 Version 3
Chandra X-Ray Center

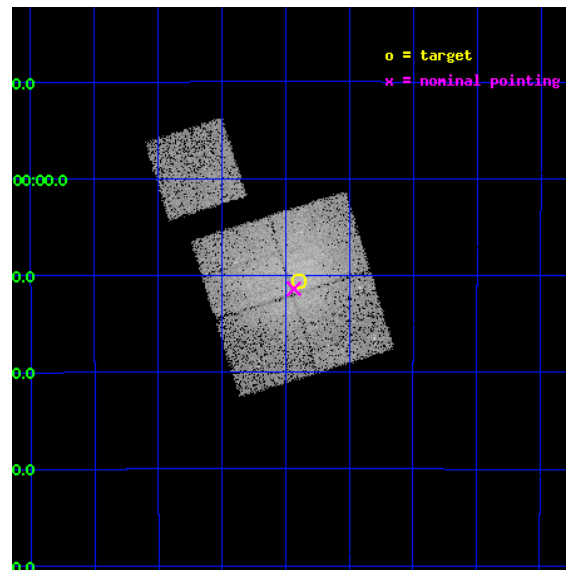
L2 Processing Date : Oct 26 2012

Contents

1	Front	2
2	OBI	3
2.1	OBI	3
2.1.1	Images	3
2.1.2	Bias	3
2.1.3	Parameters	4
2.1.4	Events	4
2.2	Compared Parameters	5
2.3	Aspect	6
2.4	Star Slots	9
2.4.1	Slot 3	9
2.4.2	Slot 4	10
2.4.3	Slot 5	11
2.4.4	Slot 6	12
2.4.5	Slot 7	13
2.5	FID Slots	14
2.5.1	Slot 0	14
2.5.2	Slot 1	15
2.5.3	Slot 2	16
A	Summary	17
A.1	Status	17
A.2	Comments	17

1 Front

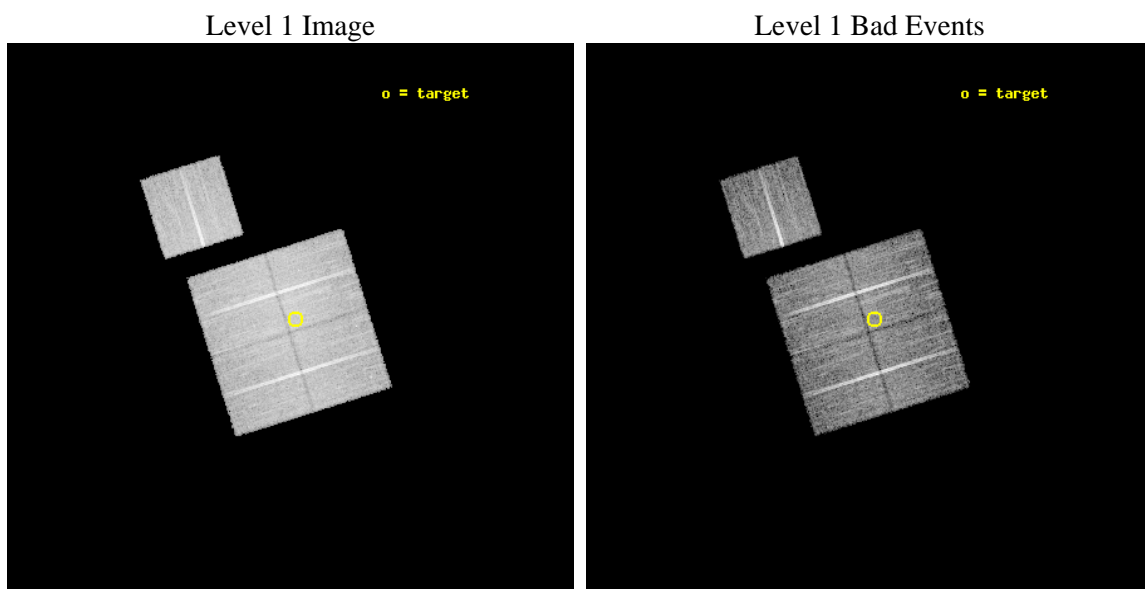
seq_num	800342	Sequence number
obs_id	4186	Observation id
title	THE HIFLUGCS CLUSTER SURVEY: A CORNERSTONE FOR COSMOLOGY	Proposal
observer	Dr. CRAIG SARAZIN	Principal investigator
object	A1736	Source name
dtcycle	0	
cycle	P	events from which exps? Prim/Second/Both
ra_targ	201.72375	Observer's specified target RA [deg]
dec_targ	-27.176528	Observer's specified target Dec [deg]
ra_nom	201.73378132886	Nominal RA [deg]
dec_nom	-27.189954502411	Nominal Dec [deg]
roll_nom	342.57326754069	Nominal Roll [deg]
revision	3	Processing version of data
ontime	15115.558980644	Sum of GTIs [s]
livetime	14918.063074649	Livetime [s]
ontime0	15118.699970901	Sum of GTIs [s]
ontime1	15118.699970901	Sum of GTIs [s]
ontime2	15118.699970901	Sum of GTIs [s]
ontime3	15115.558980644	Sum of GTIs [s]
ontime6	15115.558970749	Sum of GTIs [s]
l2events	63617	Number of level 2 events



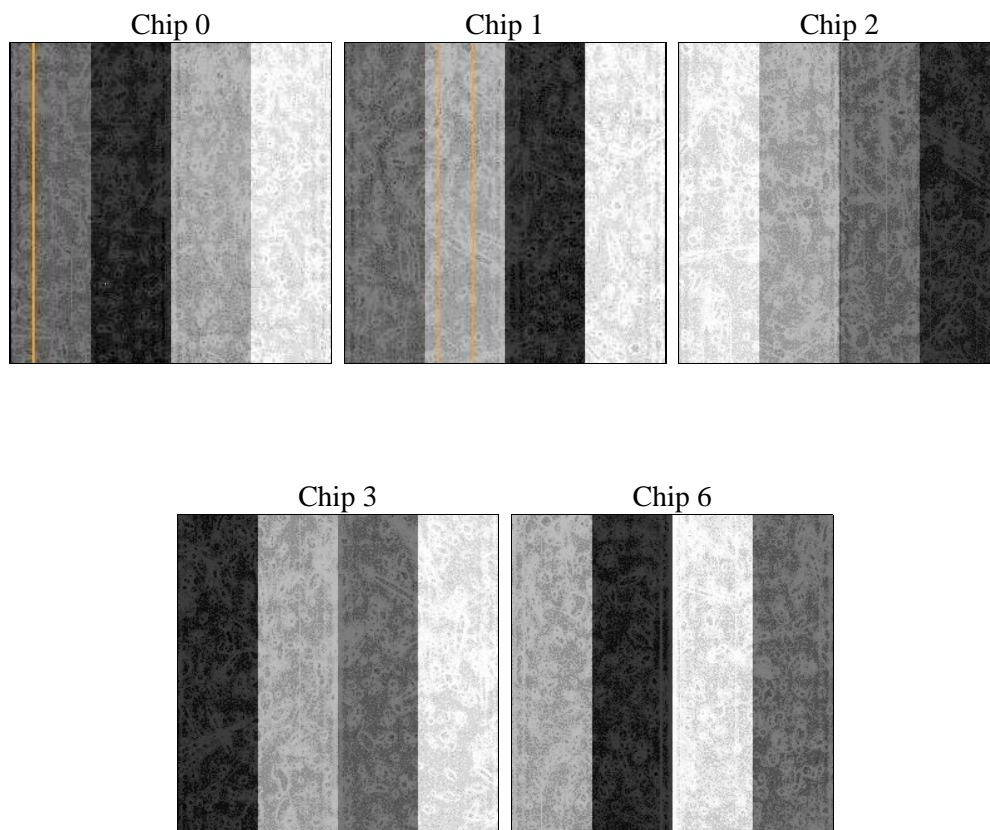
2 OBI

2.1 OBI

2.1.1 Images



2.1.2 Bias



2.1.3 Parameters

obi_num	1	Obi number	sched_exp_time	15000.000000	[s] Scheduled observation exposure time
ascdsver	8.4.5	Processing system revision	ontime	15115.558980644	Sum of GTIs [s]
caldsver	4.5.2	 	ontime0	15118.699970901	Sum of GTIs [s]
date	2012-10-26T17:20:08	Date and time of file creation	ontime1	15118.699970901	Sum of GTIs [s]
revision	3	Processing version of data	ontime2	15118.699970901	Sum of GTIs [s]
			ontime3	15115.558980644	Sum of GTIs [s]
			ontime6	15115.558970749	Sum of GTIs [s]
			l1events	419656	Number of level 1 events

2.1.4 Events

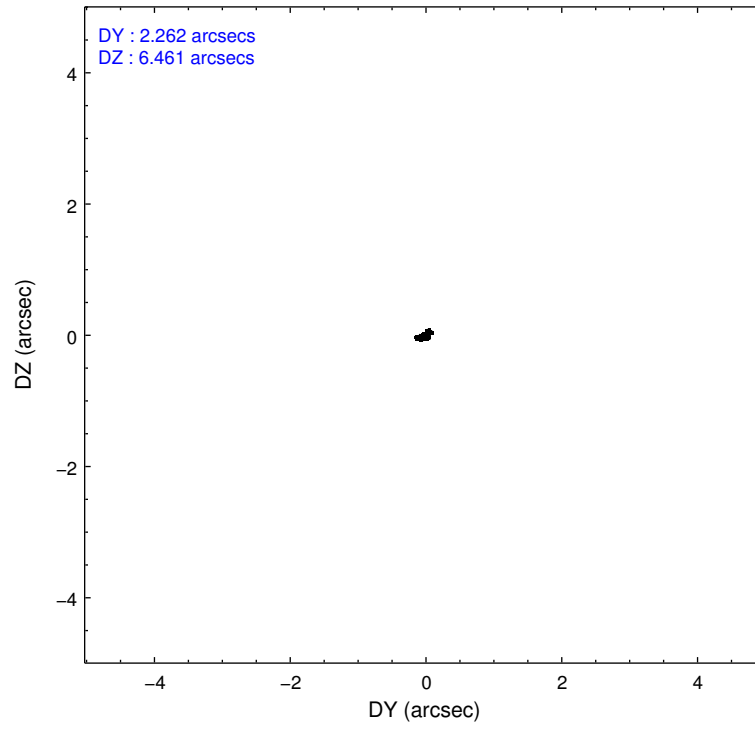
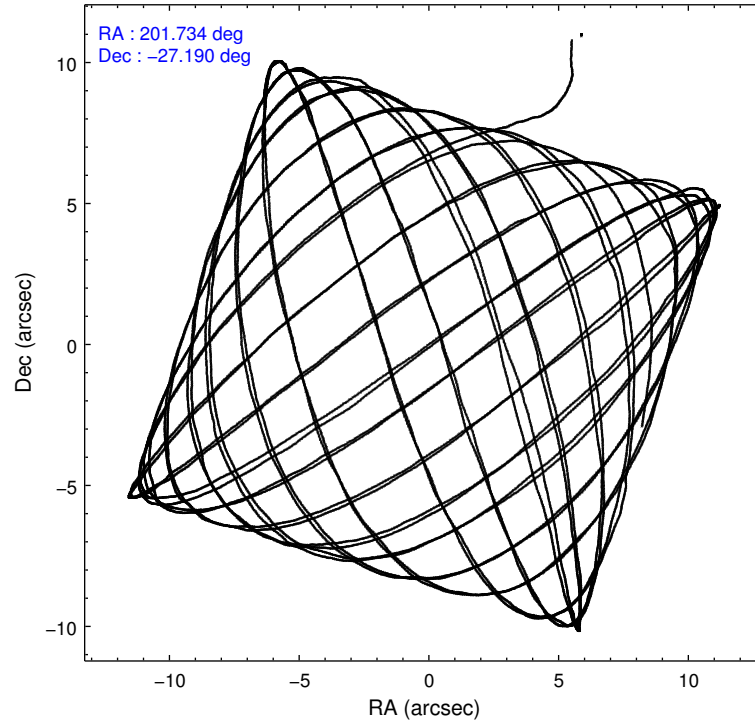
	ccd 0	ccd 1	ccd 2	ccd 3	ccd 6
level 1 events	76597	77075	92340	91968	81676
rejected events	65009	63645	74122	72640	71934
rejected %	84%	82%	80%	78%	88%

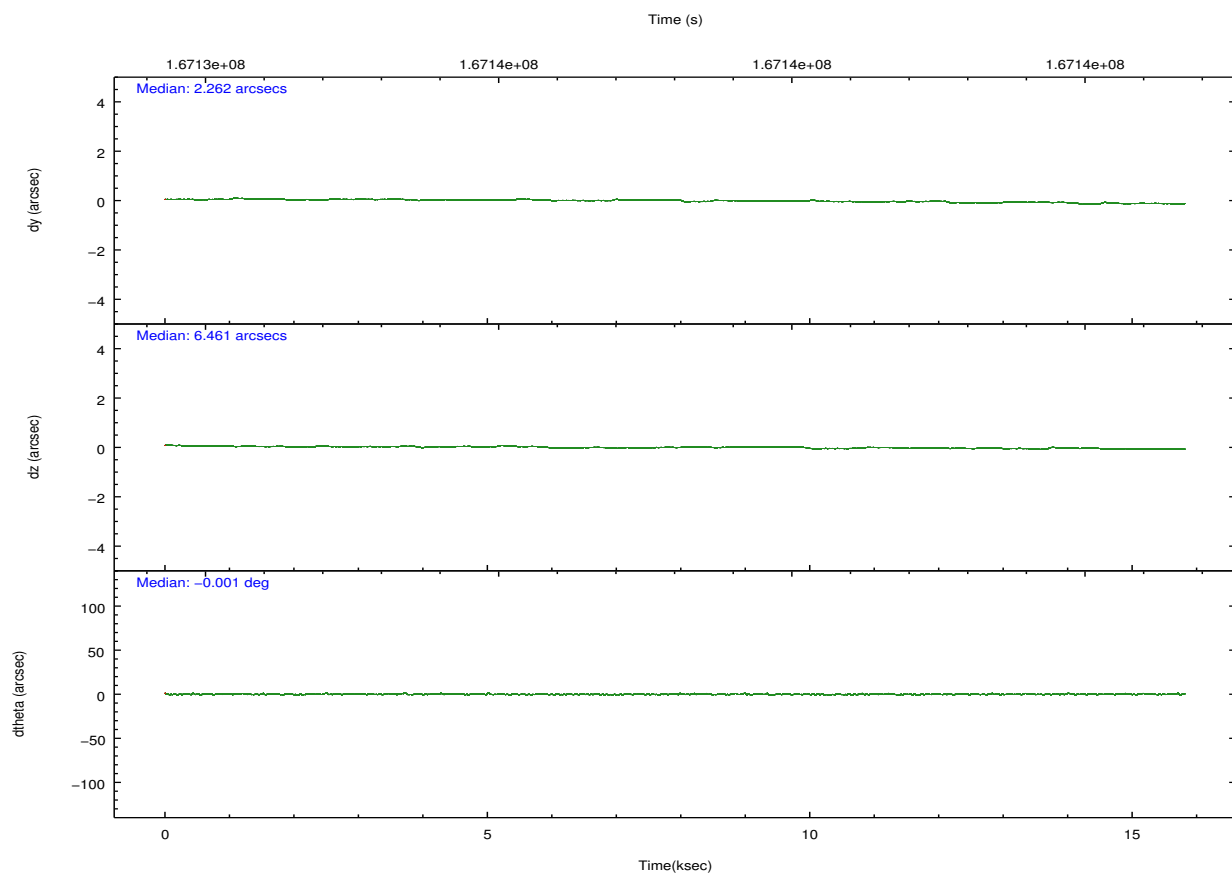
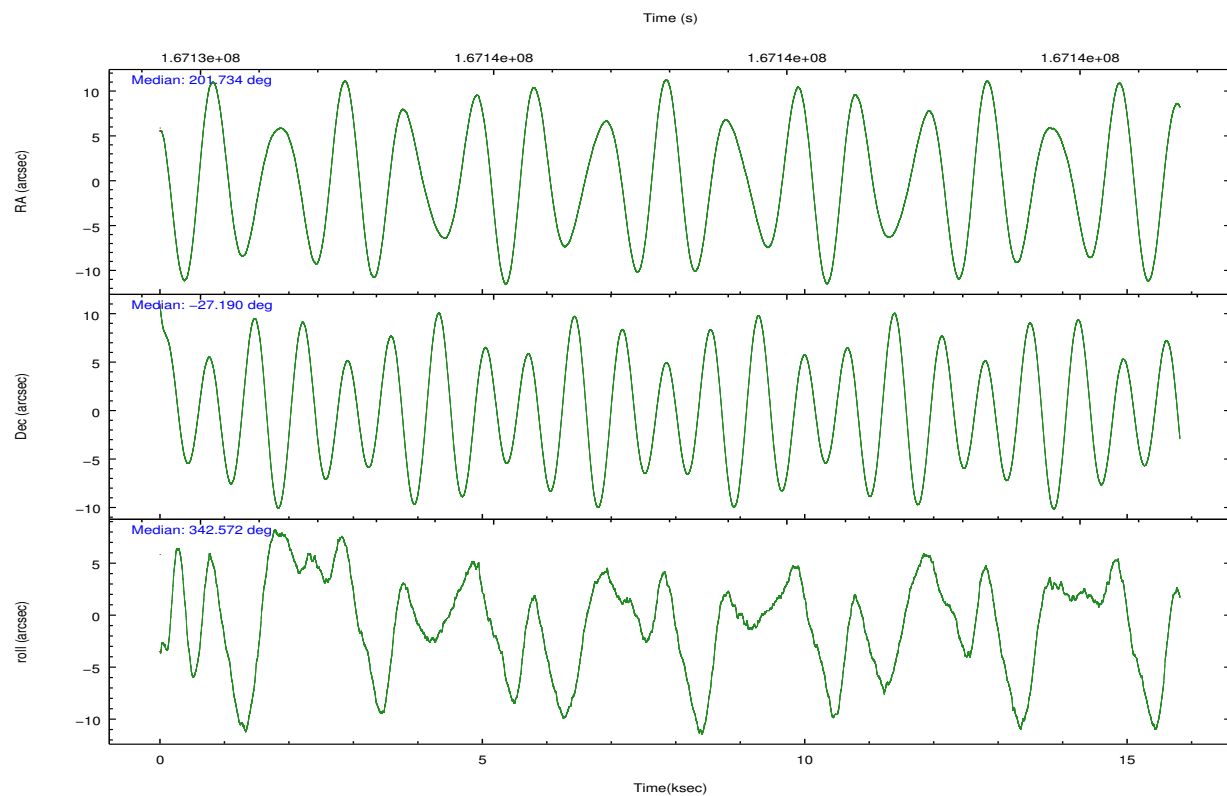
	ccd 0	ccd 1	ccd 2	ccd 3	ccd 6
grade 0 events	5860	7032	11700	12626	4248
	7%	9%	12%	13%	5%
grade 1 events	56	56	72	74	37
	0%	0%	0%	0%	0%
grade 2 events	2124	2314	2668	2666	1940
	2%	3%	2%	2%	2%
grade 3 events	1101	1126	1147	1182	956
	1%	1%	1%	1%	1%
grade 4 events	968	1126	1134	1155	893
	1%	1%	1%	1%	1%
grade 5 events	2785	2972	2610	3049	3096
	3%	3%	2%	3%	3%
grade 6 events	1536	1834	1571	1707	1709
	2%	2%	1%	1%	2%
grade 7 events	62167	60615	71438	69509	68797
	81%	78%	77%	75%	84%

2.2 Compared Parameters

Parameter	Planned	Actual	Parameter	Planned	Actual
Instrument	ACIS	ACIS	Obspar format version number	7	7
Detector	ACIS-01236	ACIS-01236	Obspar file type	PREDICTED	ACTUAL
Grating	NONE	NONE	Obspar update status	NONE	UPDATED
Data mode	VFAINT	VFAINT	Number of optional ACIS chips dropped	0	0
Observation mode	POINTING	POINTING	On-chip summing requested	N	N
[deg] Pointing RA	201.703793	201.733781328859	Subarray requested	NONE	NONE
[deg] Pointing Dec	-27.196065	-27.1899545024113	Alternating exposures requested	N	N
[deg] Pointing Roll	342.350880	342.57326754069	[s] Primary exposure time	0.000000	3.1
[mm] SIM focus pos	-0.782348	-0.7809083437167272			
[mm] SIM defocus	0	0.001439871863259334			
[mm] SIM translation stage pos	-233.592463	-233.5874344608287			
[mm] SIM translation stage offset	0	-0.005018542100998502			
[s] Observation start time (MET)	167130916.184000	167129643.31087			
Observation start date	2003-04-19T09:14:12	2003-04-19T08:54:03			
[s] Observation end time (MET)	167145916.184000	167147193.36161			
Observation end date	2003-04-19T13:24:12	2003-04-19T13:46:33			
Read mode	TIMED	TIMED			

2.3 Aspect



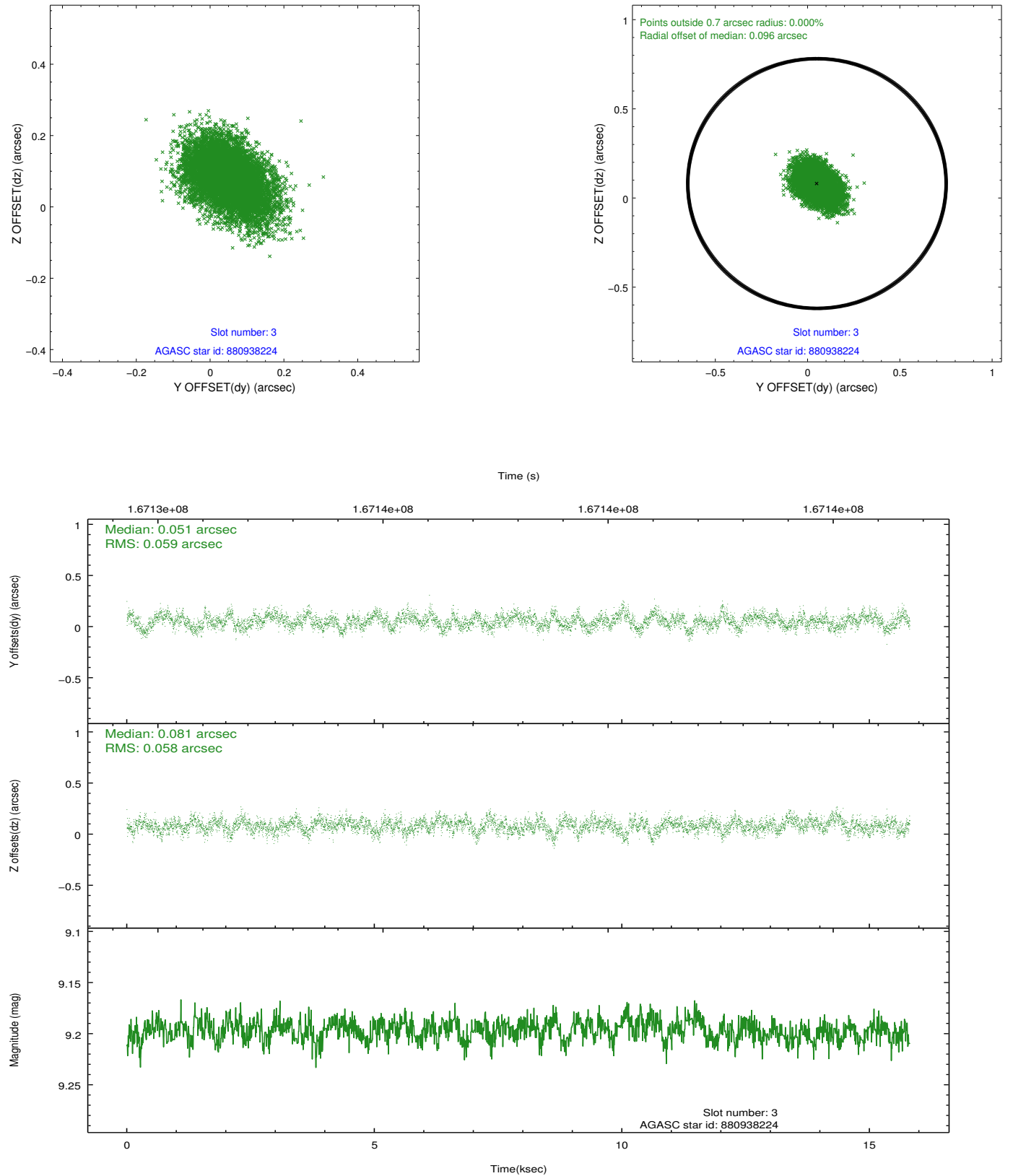


Slot Statistics

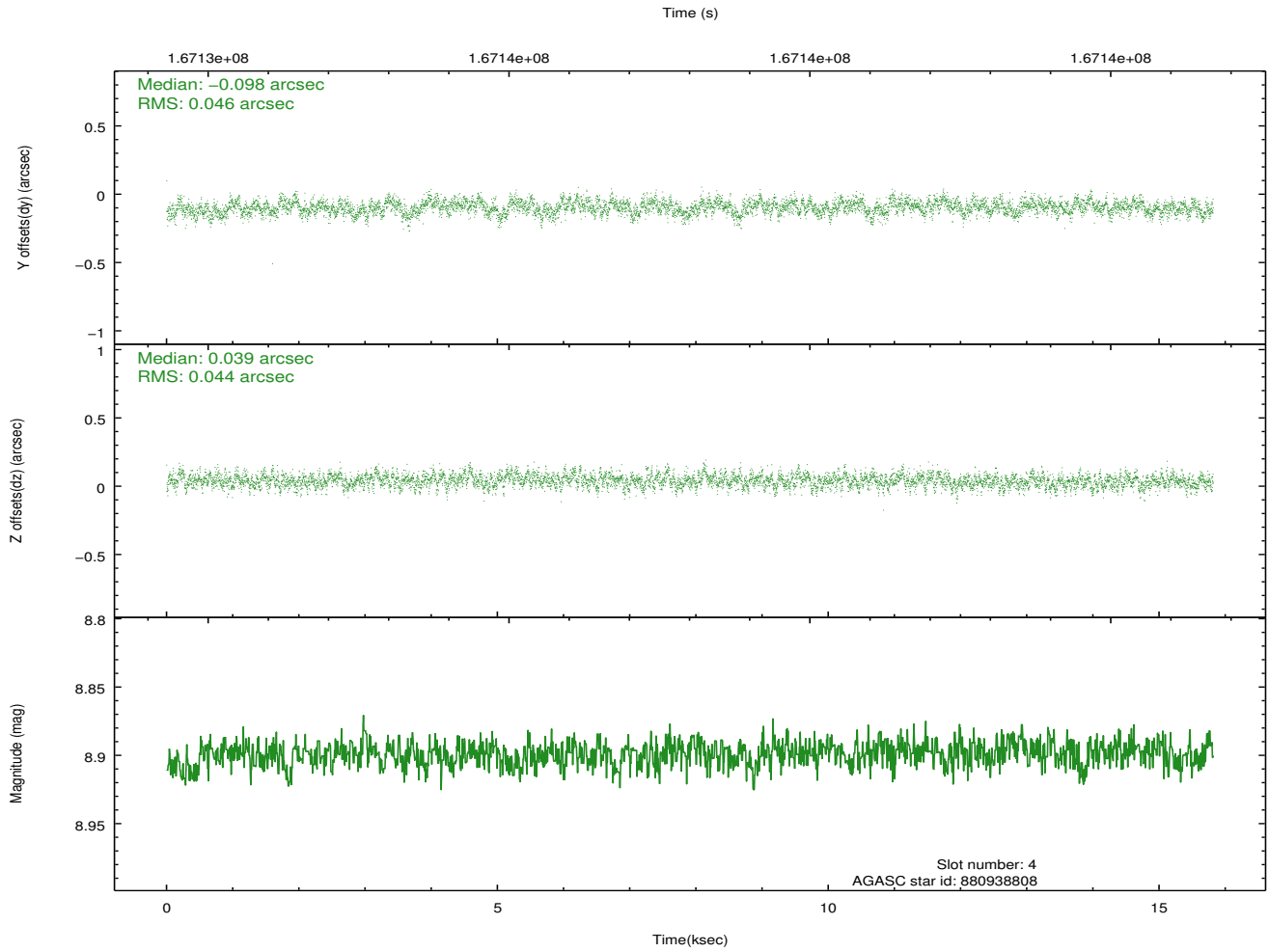
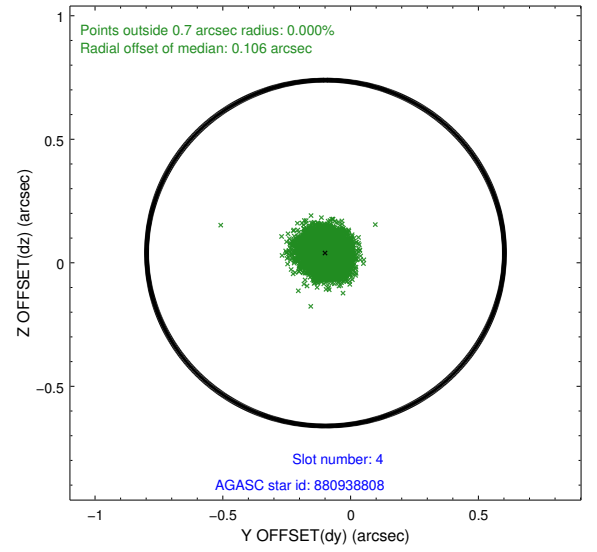
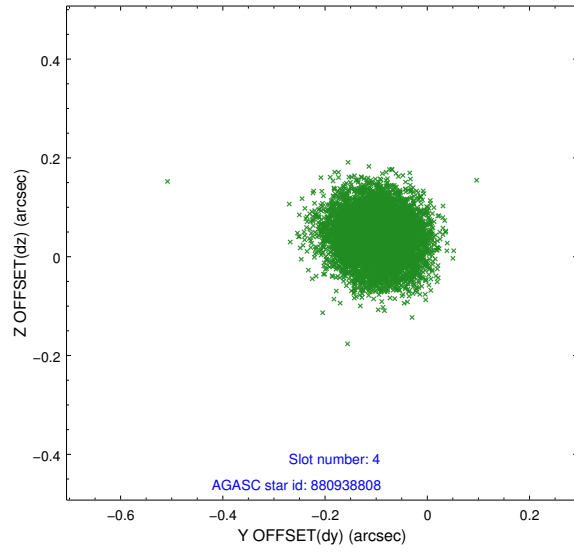
slot	status	id	mag	n_pts	med_dy	med_dz	dr1	dr2	ra	dec	mean_y	mean_z
0	FID	ACIS-I-1	7.25	3858	0.007	-0.003	0.006	0.011	0.000000	0.000000	937.56	-829.86
1	FID	ACIS-I-5	7.24	3856	-0.073	0.048	0.006	0.010	0.000000	0.000000	-1810.44	1067.59
2	FID	ACIS-I-6	7.26	3857	-0.025	0.025	0.007	0.011	0.000000	0.000000	402.81	1712.35
3	GUIDE	880938224	9.20	7709	0.051	0.081	0.087	0.145	201.238253	-27.148228	-1472.12	-290.64
4	GUIDE	880938808	8.90	7712	-0.098	0.039	0.068	0.109	201.379902	-27.218141	-963.61	-391.47
5	GUIDE	880939792	9.74	7710	0.010	0.025	0.140	0.228	202.282991	-27.623783	2228.85	-911.30
6	GUIDE	880943744	8.98	7711	0.007	0.024	0.102	0.167	201.130459	-27.739204	-1146.30	-2421.26
7	GUIDE	880945376	8.03	7711	0.032	-0.174	0.082	0.129	201.527731	-26.606601	-1183.26	1849.32

2.4 Star Slots

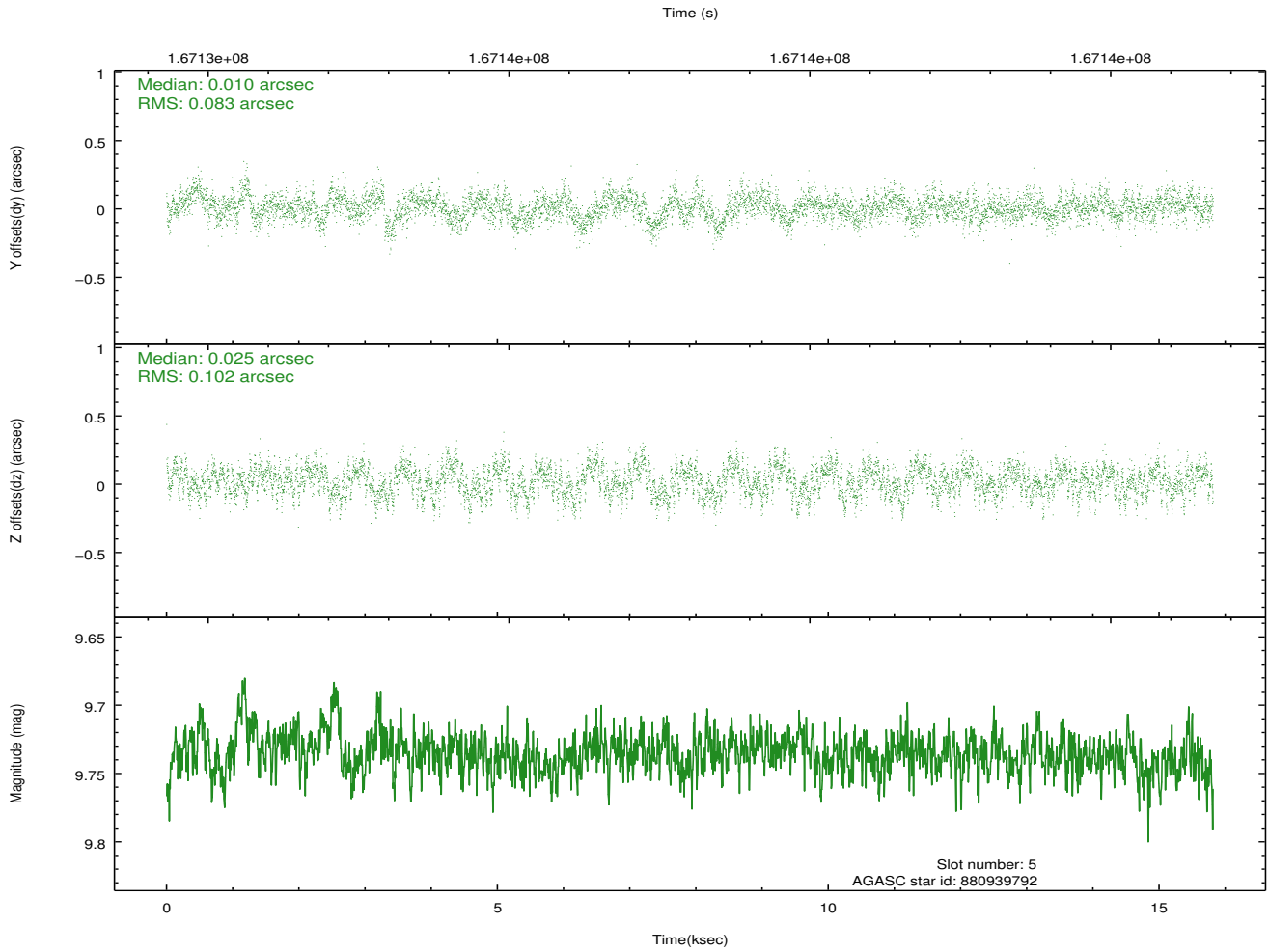
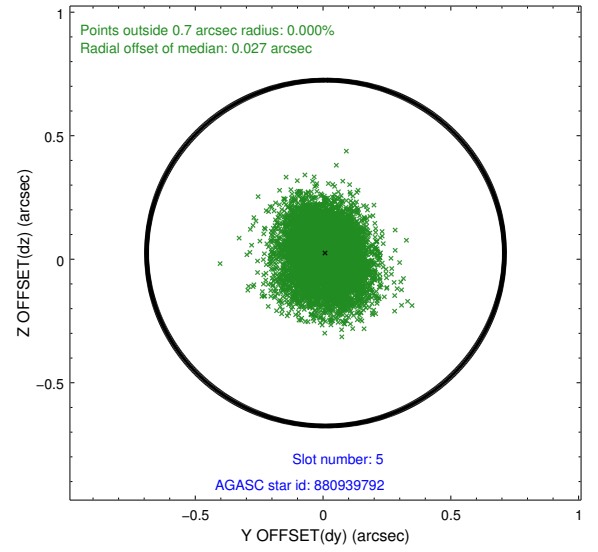
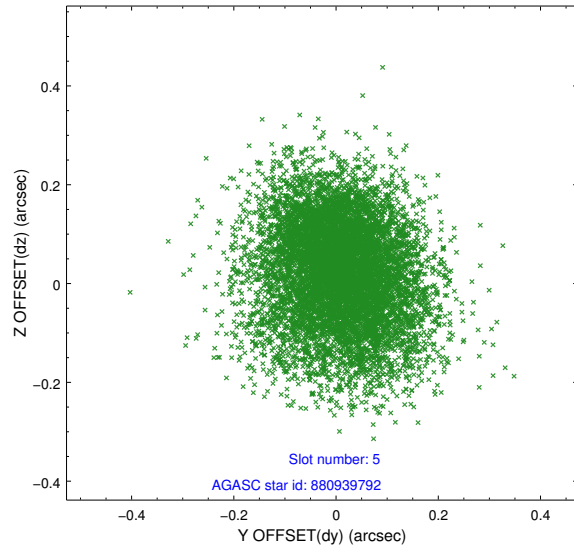
2.4.1 Slot 3



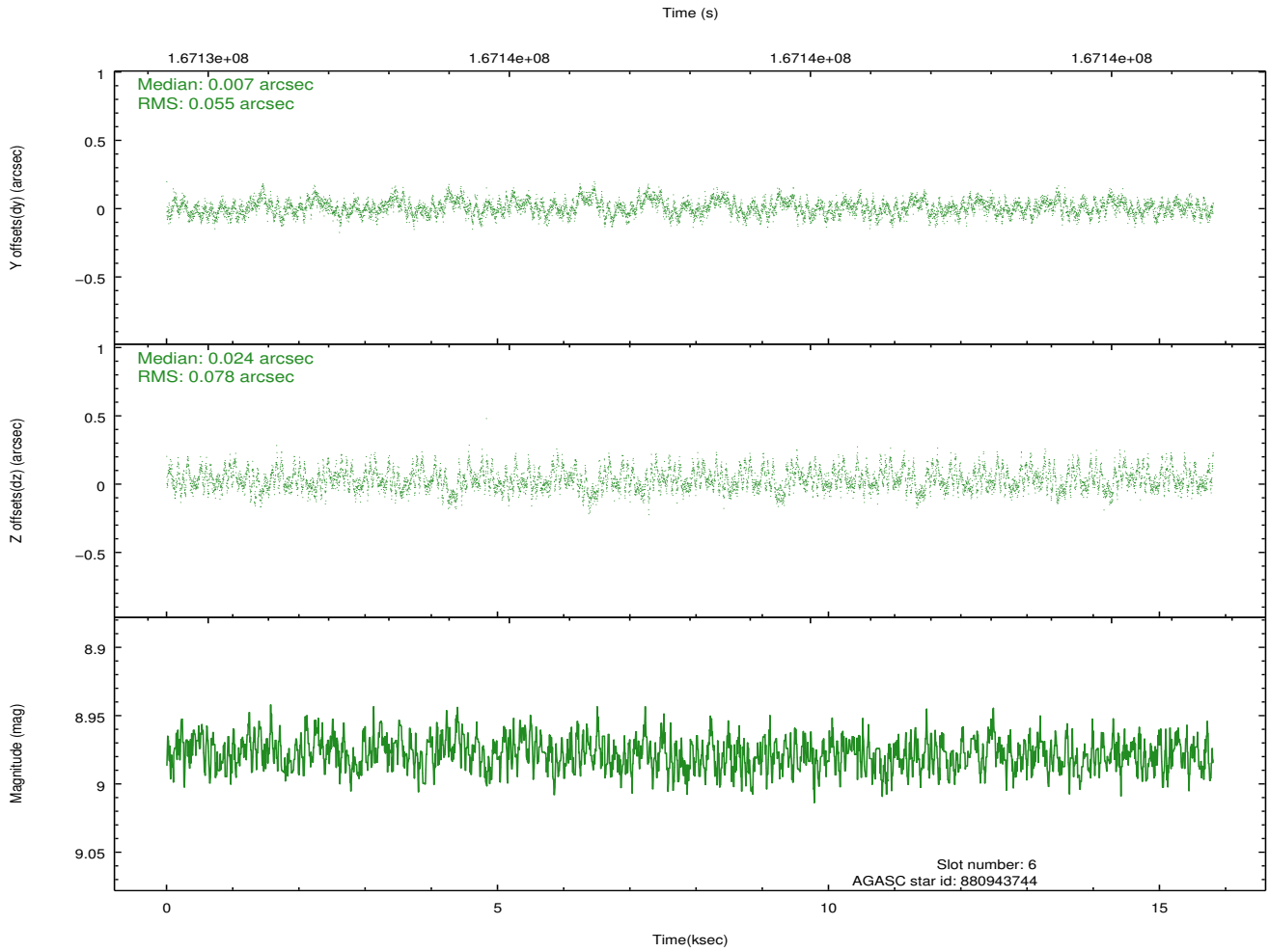
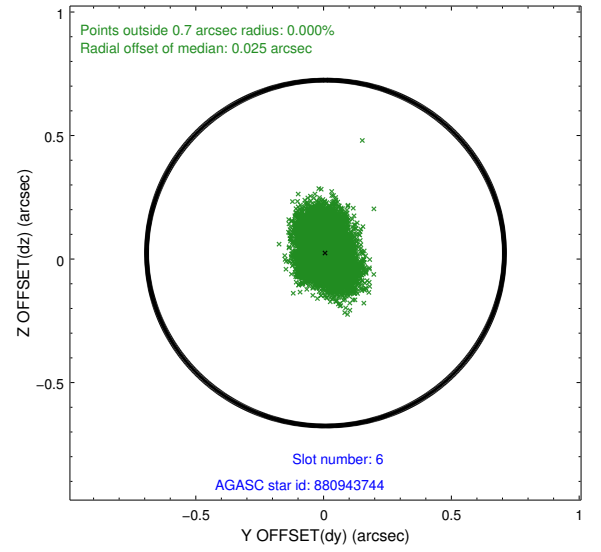
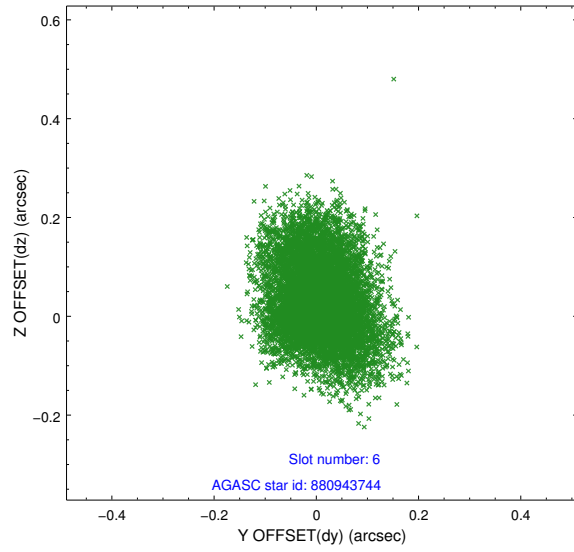
2.4.2 Slot 4



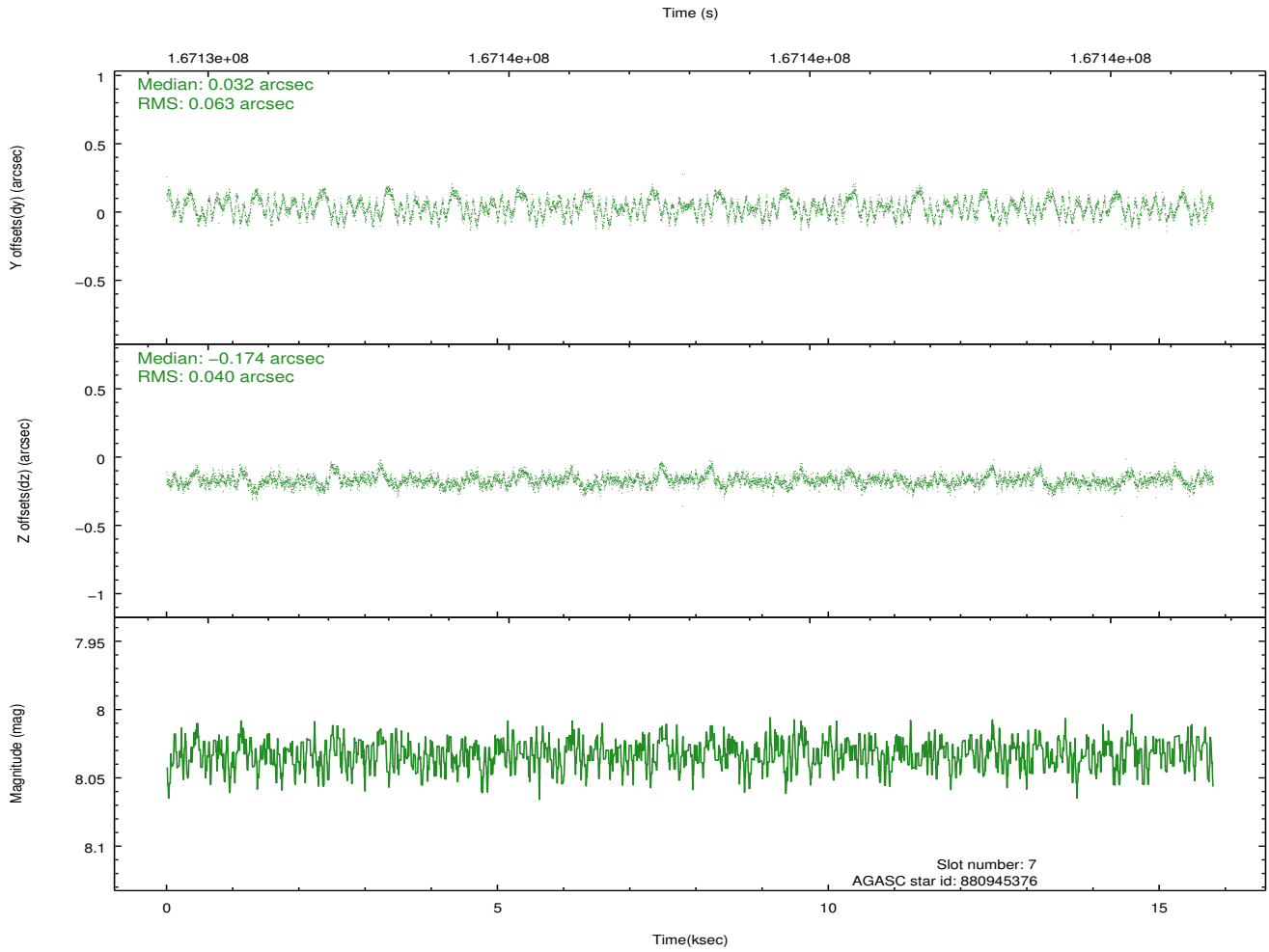
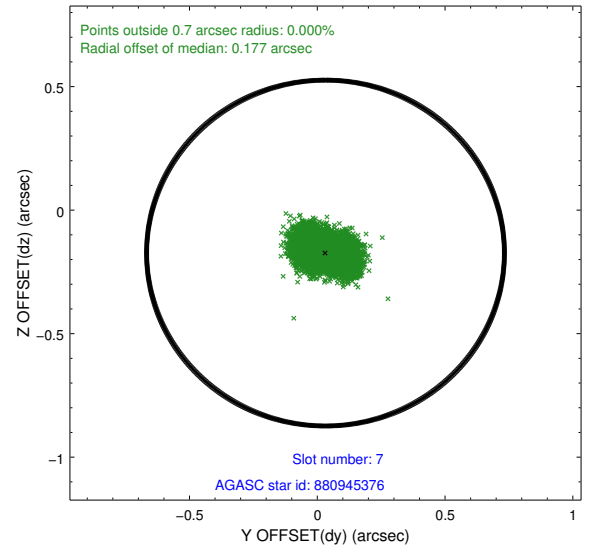
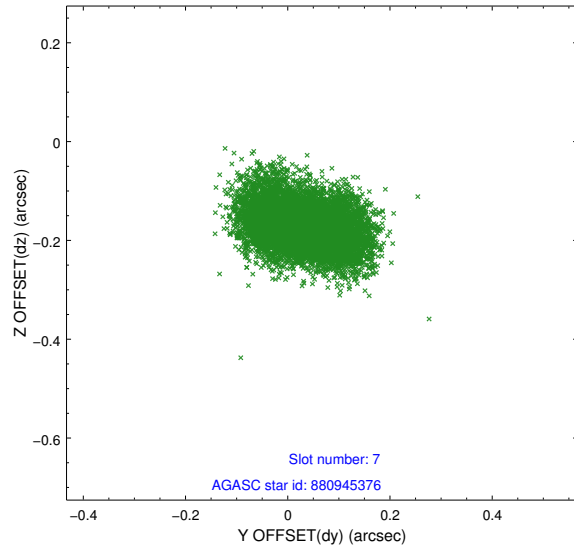
2.4.3 Slot 5



2.4.4 Slot 6

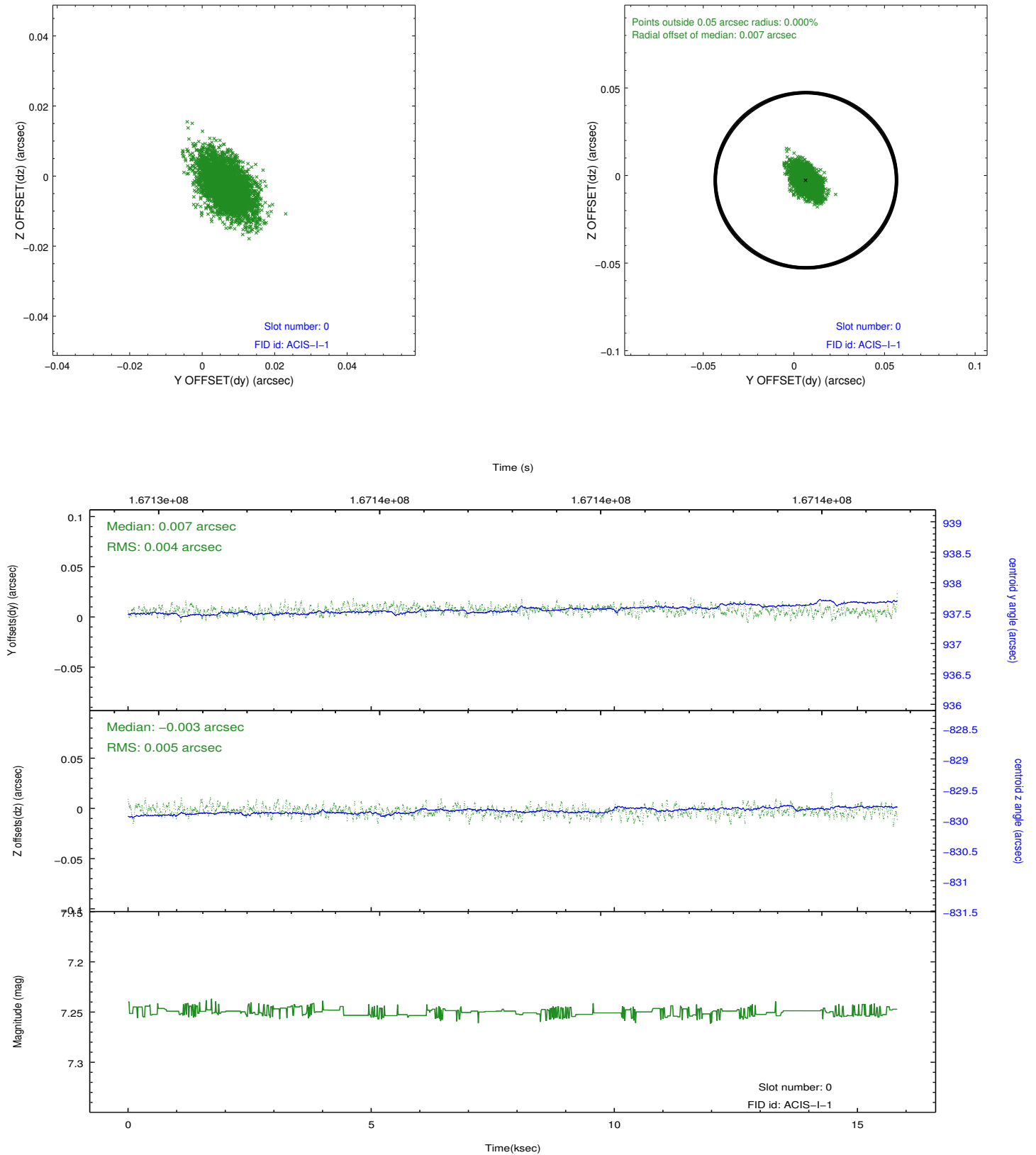


2.4.5 Slot 7

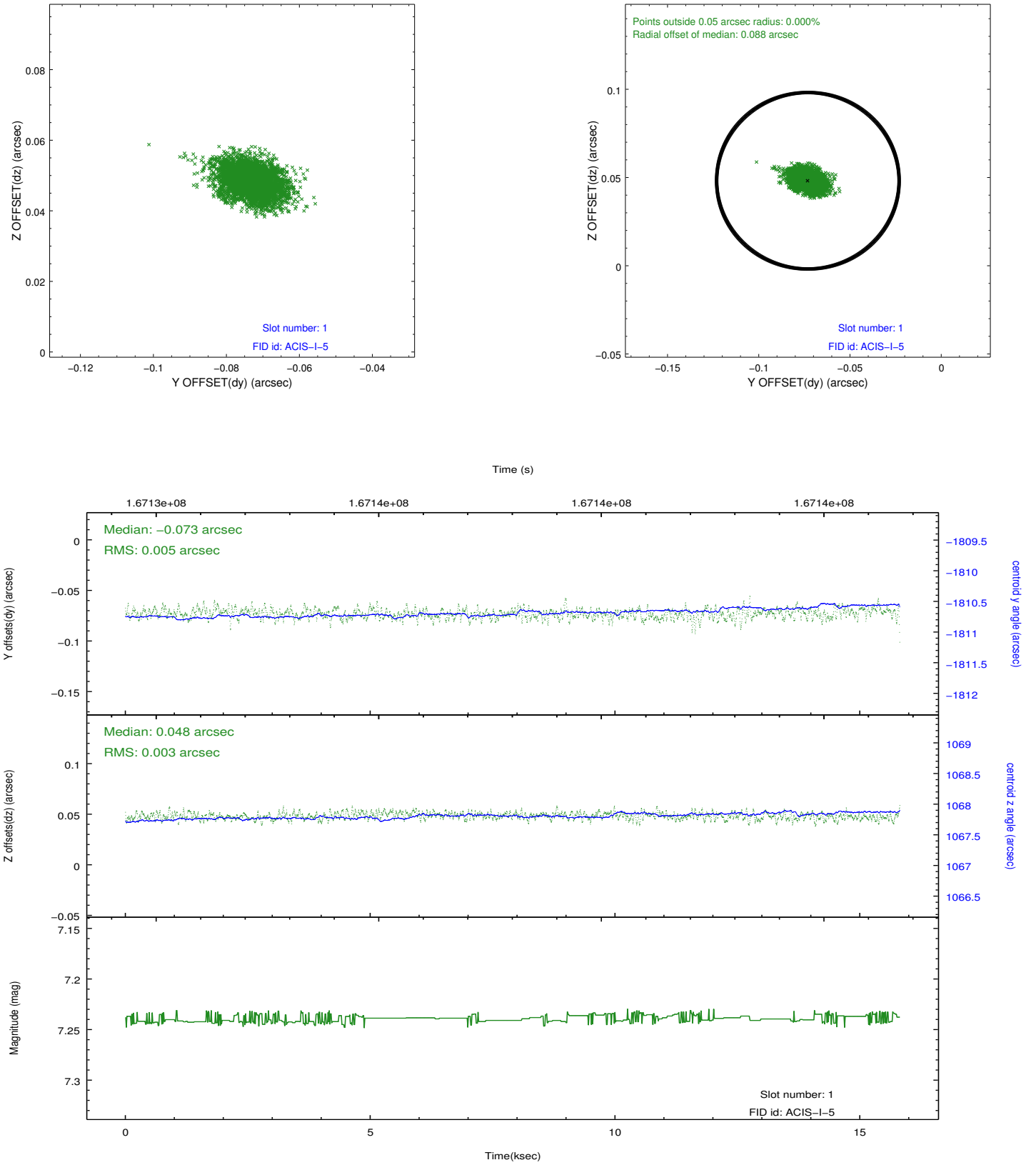


2.5 FID Slots

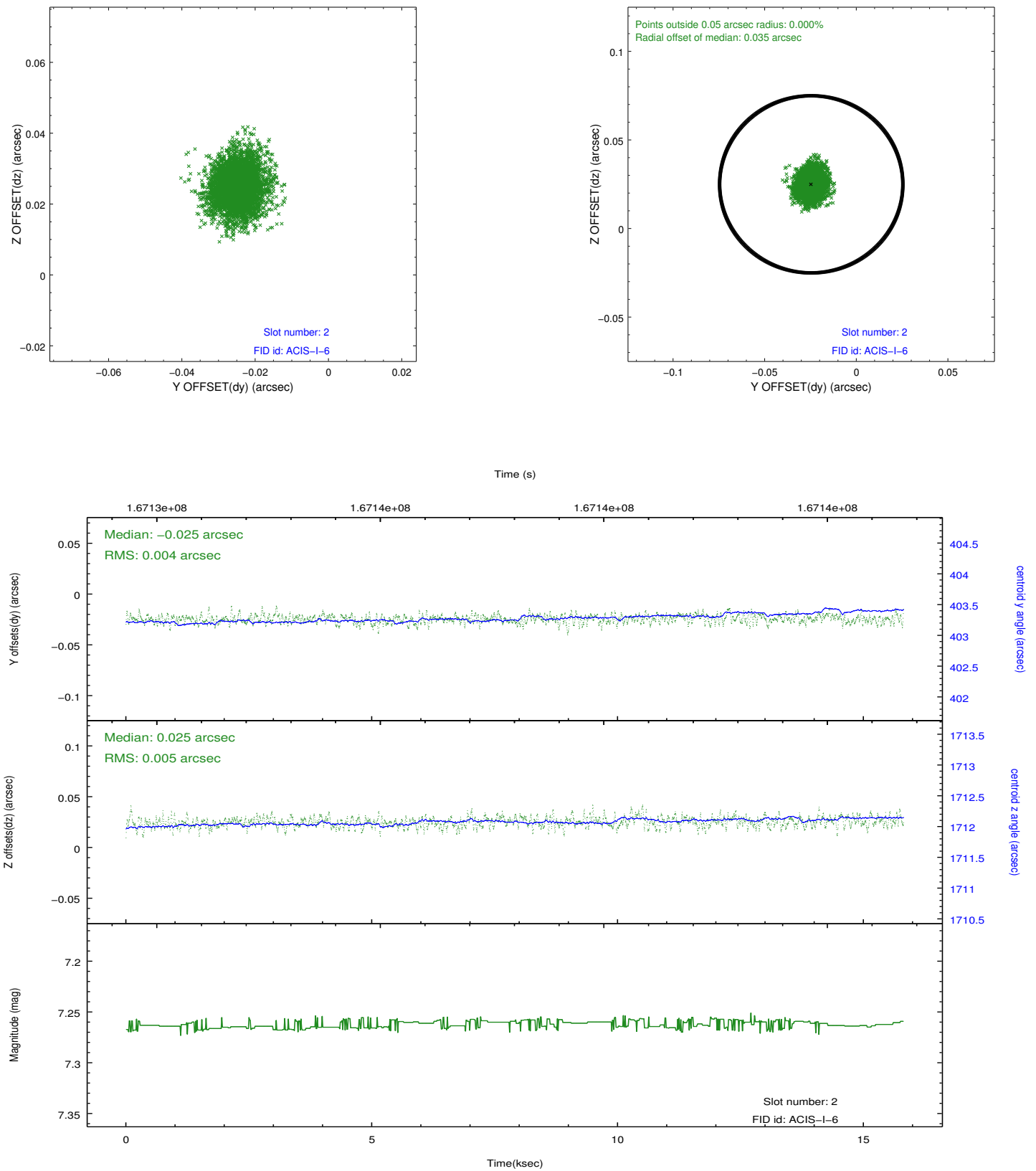
2.5.1 Slot 0



2.5.2 Slot 1



2.5.3 Slot 2



A Summary

A.1 Status

V&V Scientist	Beth Sundheim
V&V Date (YYYY-MM-DD)	2012.11.14
V&V Edition	1
V&V Disposition and Status	OK
V&V Charge Time	15.118

A.2 Comments