

V&V Reference Report

L2 ASCDS Version : 7.6.8

Observation 4156 - L2 Version 001
Chandra X-Ray Center

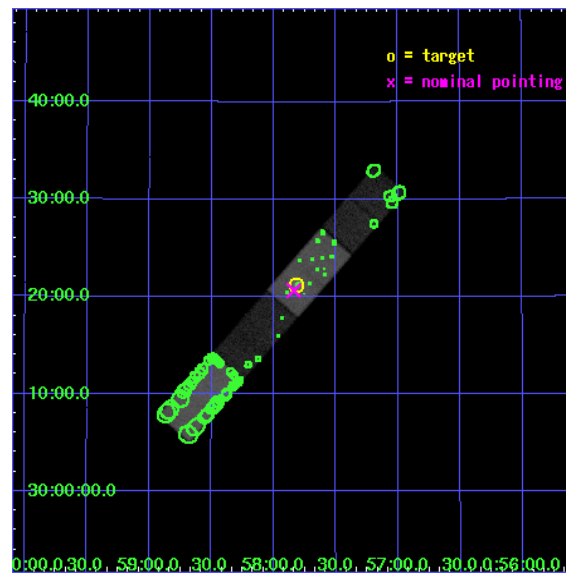
L2 Processing Date : Jul 28 2006

Contents

1	Front	2
2	OBI	3
2.1	OBI	3
2.1.1	Images	3
2.1.2	Bias	3
2.1.3	Parameters	4
2.1.4	Events	4
2.2	Compared Parameters	5
2.3	Aspect	6
2.4	Star Slots	9
2.4.1	Slot 3	9
2.4.2	Slot 4	10
2.4.3	Slot 5	11
2.4.4	Slot 6	12
2.4.5	Slot 7	13
2.5	FID Slots	14
2.5.1	Slot 0	14
2.5.2	Slot 1	15
2.5.3	Slot 2	16
3	Point Sources	17
A	Summary	18
A.1	Status	18
A.2	Comments	18

1 Front

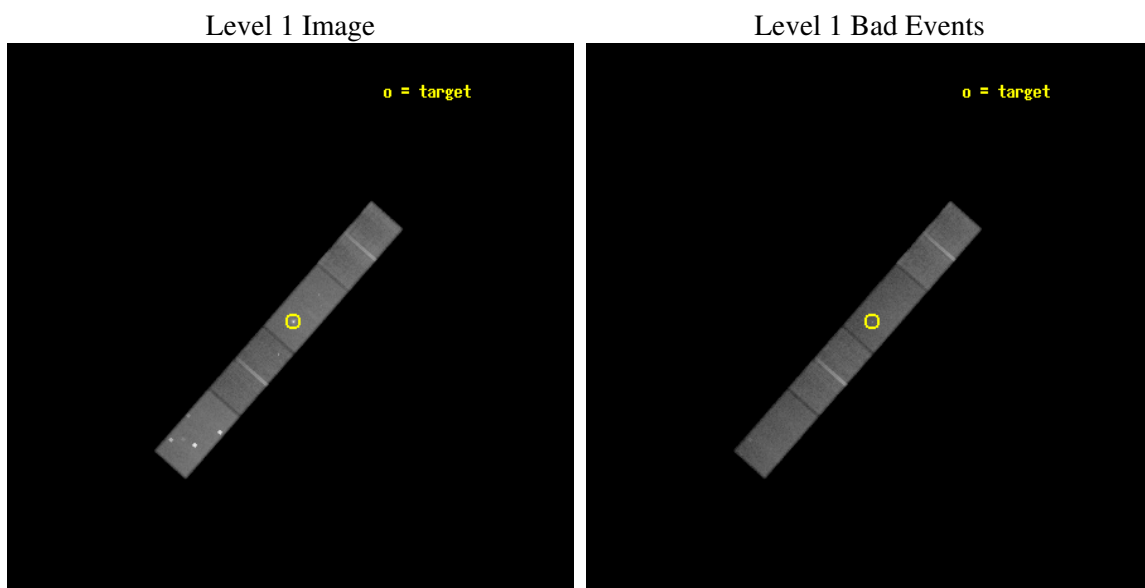
seq_num	700835
obs_id	4156
title	THE X-RAY JET IN NGC 315
observer	Prof Diana Worrall
object	NGC 315
dtcycle	0
cycle	P
ra_targ	14.45375
dec_targ	30.352417
ra_nom	14.459565461197
dec_nom	30.344162011261
roll_nom	311.35258177206
revision	2
ontime	56341.399604917
livetime	55013.313495588
ontime5	56341.399604917
ontime6	56339.658594817
ontime7	56341.399604917
ontime8	56339.658594817
l2events	255210



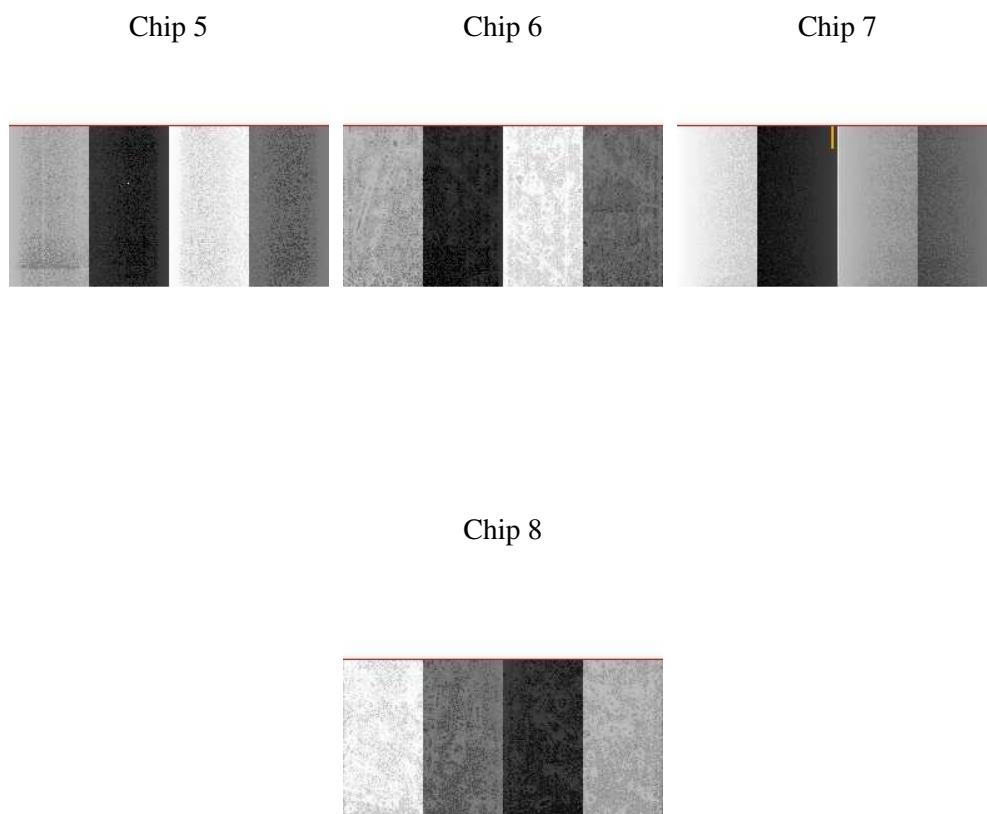
2 OBI

2.1 OBI

2.1.1 Images



2.1.2 Bias



2.1.3 Parameters

obi_num	0
ascdsver	7.6.8
caldbver	3.2.2
date	2006-07-28T03:25:23
revision	2

sched_exp_time	56000.000000
ontime	56551.746638179
ontime5	56551.746638179
ontime6	56550.005628079
ontime7	56551.746638179
ontime8	56550.005628079
l1events	996223

2.1.4 Events

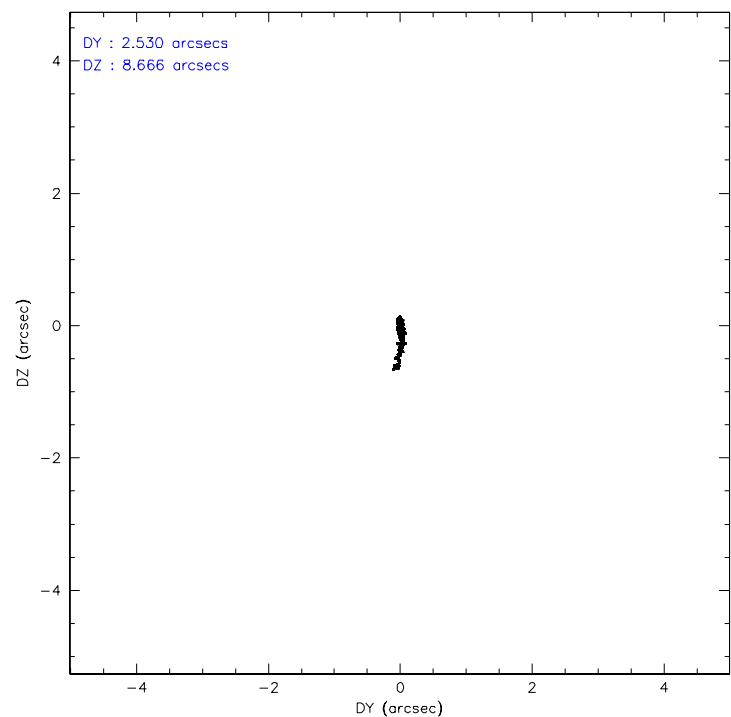
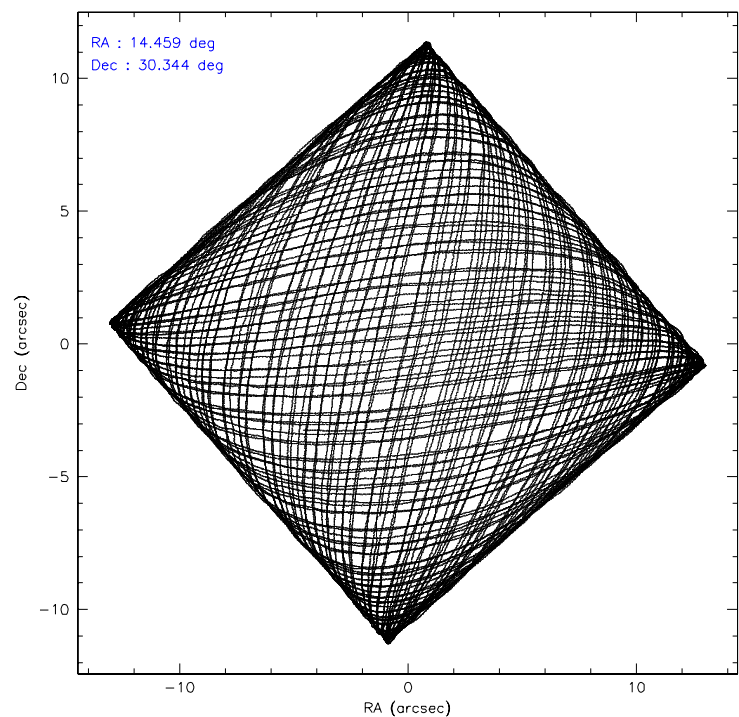
	ccd 5	ccd 6	ccd 7	ccd 8
level 1 events	304677	195112	252189	244245
rejected events	146175	171943	144229	196634
rejected %	47%	88%	57%	80%

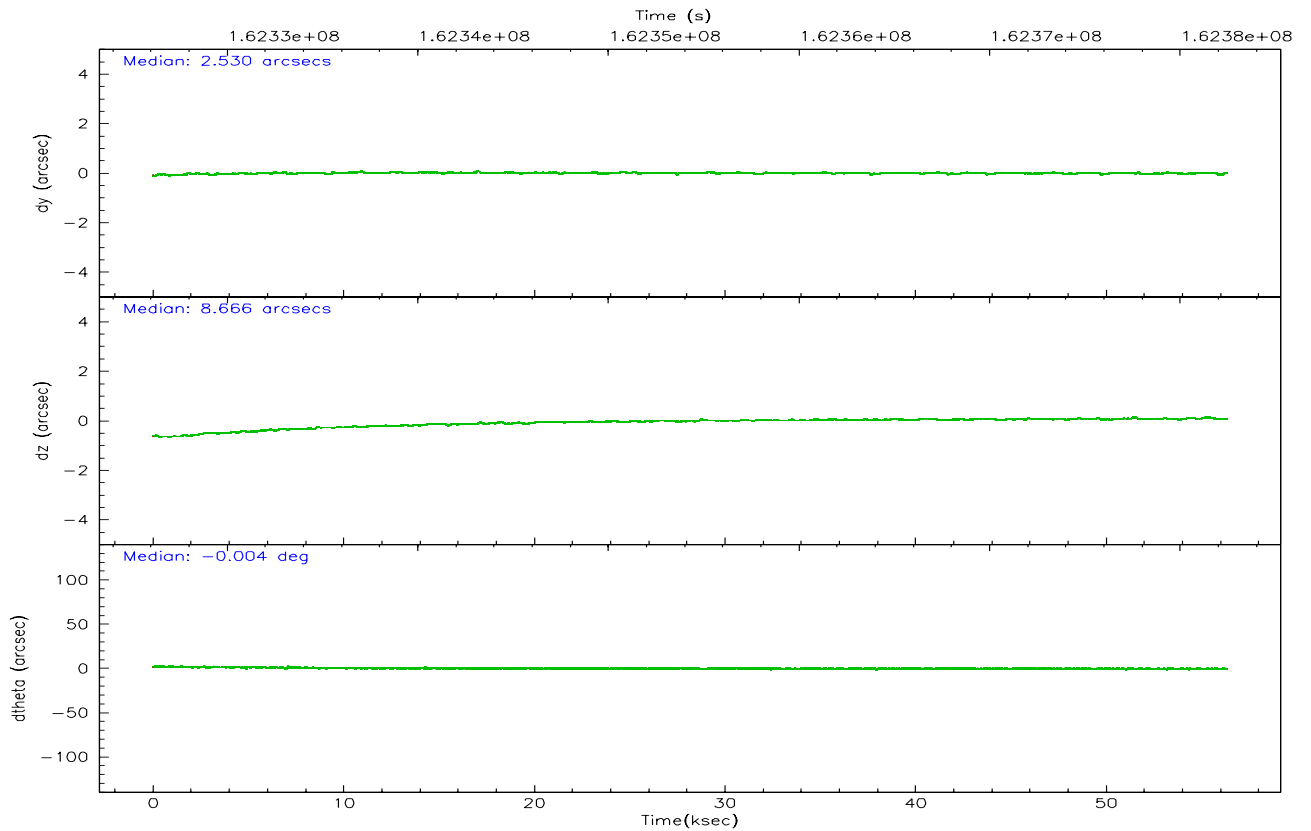
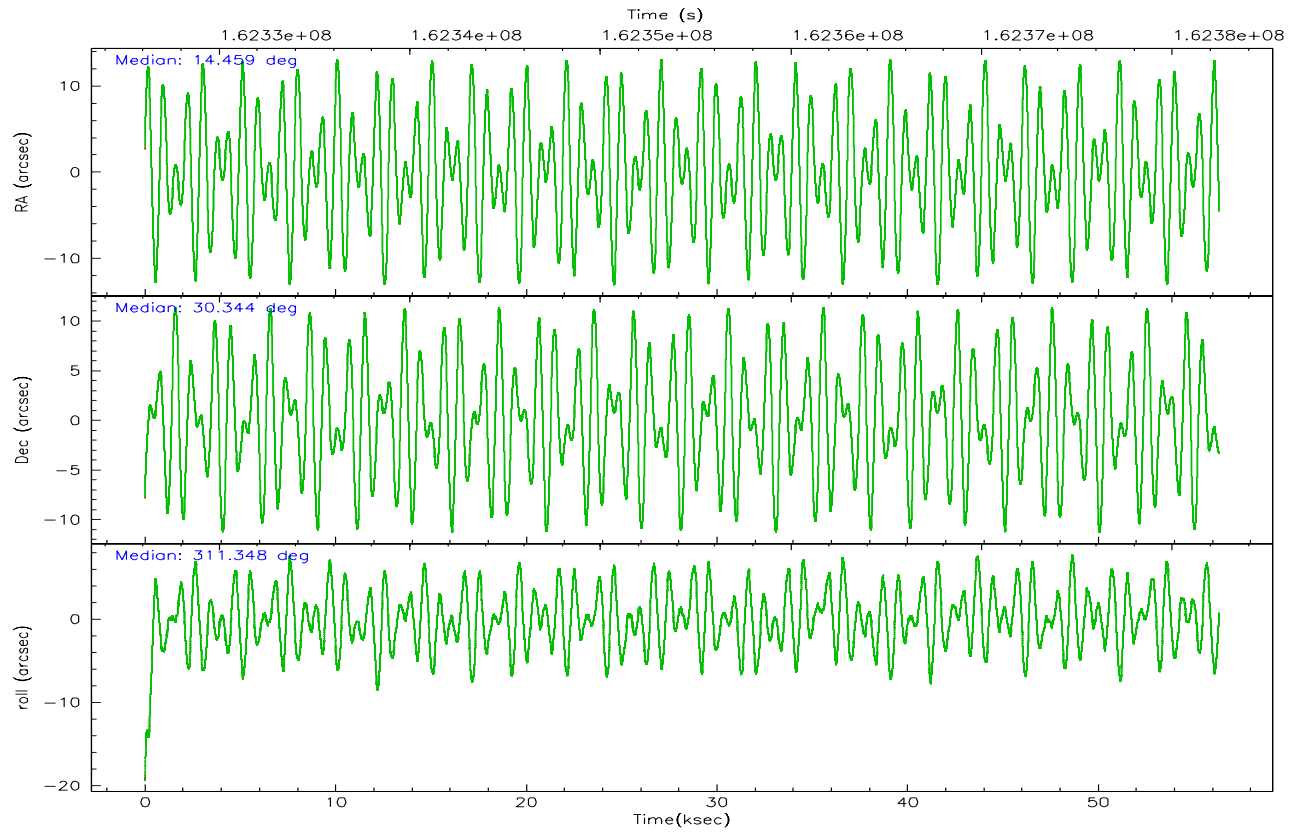
	ccd 5	ccd 6	ccd 7	ccd 8
grade 0 events	47631	9221	10077	14366
	15%	4%	3%	5%
grade 1 events	528	60	182	114
	0%	0%	0%	0%
grade 2 events	40396	4365	27080	10277
	13%	2%	10%	4%
grade 3 events	3092	2724	7496	5378
	1%	1%	2%	2%
grade 4 events	2917	2658	7281	5226
	0%	1%	2%	2%
grade 5 events	13002	8124	16795	10388
	4%	4%	6%	4%
grade 6 events	65057	4300	56396	12562
	21%	2%	22%	5%
grade 7 events	132054	163660	126882	185934
	43%	83%	50%	76%

2.2 Compared Parameters

Parameter	Planned	Actual	Parameter	Planned	Actual
Instrument	ACIS	ACIS	Obspar format version number	6	6
Detector	ACIS-5678	ACIS-5678	Obspar file type	PREDICTED	ACTUAL
Grating	NONE	NONE	Obspar update status	NONE	UPDATED
Data mode	VFAINT	VFAINT	On-chip summing requested	N	N
Observation mode	POINTING	POINTING	Subarray requested	1/2	1/2
Pointing RA	14.429534	14.45956546119677	Subarray start row	0	257
Pointing Dec	30.352505	30.34416201126083	Subarray row count	1024	512
Pointing Roll	311.211128	311.3525817720636	Alternating exposures requested	N	N
SIM focus pos (mm)	-0.684267	-0.6828225247311905	Primary exposure time	0.000000	1.7
SIM defocus (mm)	0	0.001444936568705701			
SIM translation stage pos (mm)	-190.132523	-190.1400660498719			
SIM translation stage offset (mm)	0	0.00754346686406393			
Observation start time	162326458.184000	162325416.8584			
Observation start date	2003-02-22T18:39:54	2003-02-22T18:23:36			
Observation end time	162382458.184000	162383342.17333			
Observation end date	2003-02-23T10:13:14	2003-02-23T10:29:02			
Read mode	TIMED	TIMED			

2.3 Aspect



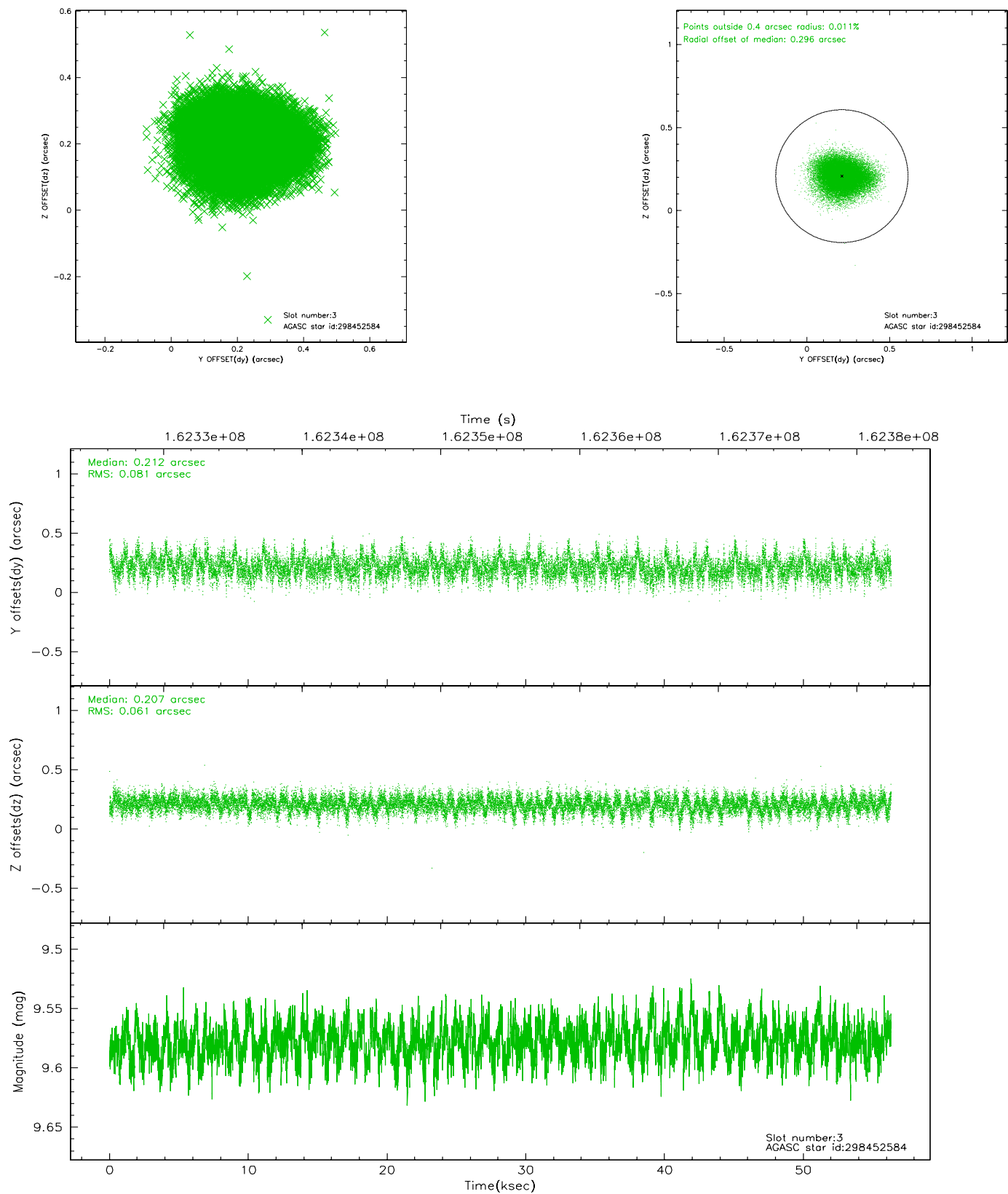


Slot Statistics

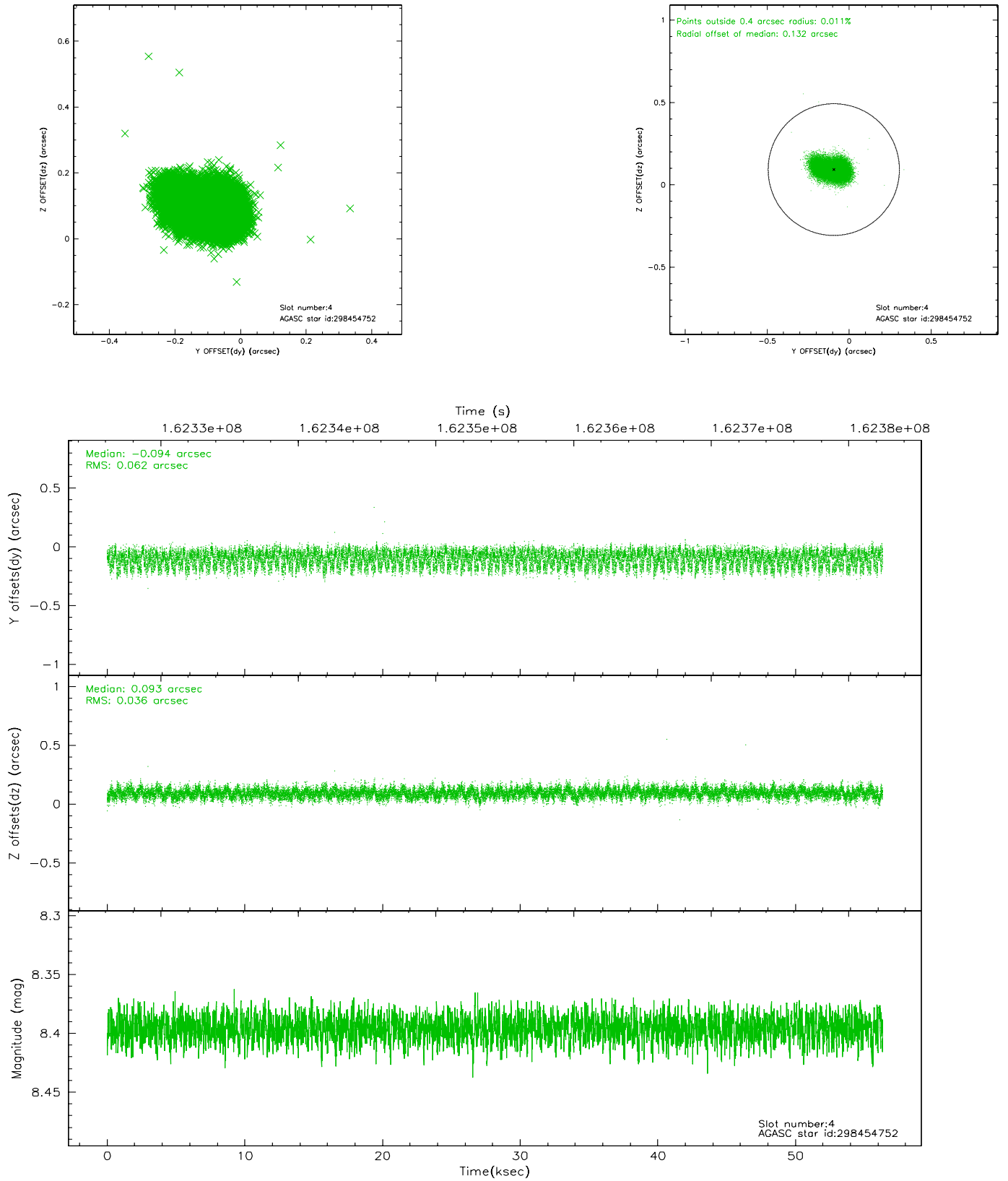
slot	status	id	mag	n_pts	med_dy	med_dz	dr1	dr2	ra	dec	mean_y	mean_z
0	FID	ACIS-S-2	7.10	13743	-0.011	0.015	0.007	0.012	0.000000	0.000000	-755.17	-1729.78
1	FID	ACIS-S-4	7.20	13743	-0.060	0.001	0.005	0.010	0.000000	0.000000	2158.08	178.73
2	FID	ACIS-S-5	7.23	13743	0.040	-0.008	0.006	0.011	0.000000	0.000000	-1808.00	172.35
3	GUIDE	298452584	9.58	27466	0.212	0.207	0.107	0.177	15.393177	30.297373	2113.36	2131.67
4	GUIDE	298454752	8.40	27474	-0.094	0.093	0.076	0.123	14.607216	31.096770	-1655.24	2177.96
5	GUIDE	298454904	9.77	27404	0.032	-0.117	0.113	0.185	13.962266	30.089388	-248.36	-1716.80
6	GUIDE	228860832	7.01	27485	-0.031	-0.102	0.079	0.138	14.474030	29.521365	2343.32	-1866.21
7	GUIDE	298453544	9.33	27465	-0.125	-0.080	0.074	0.121	14.058324	30.732014	-1785.92	37.19

2.4 Star Slots

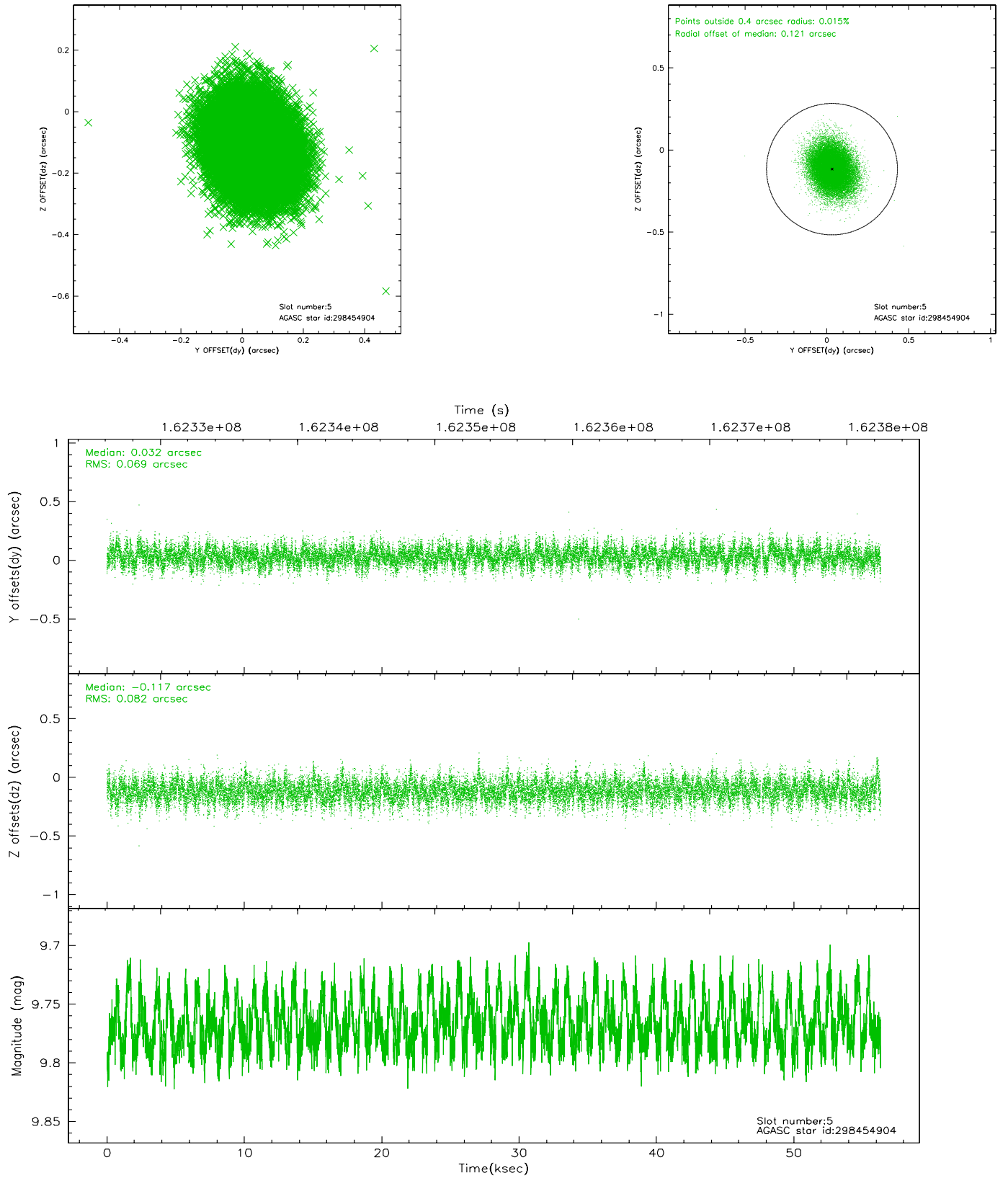
2.4.1 Slot 3



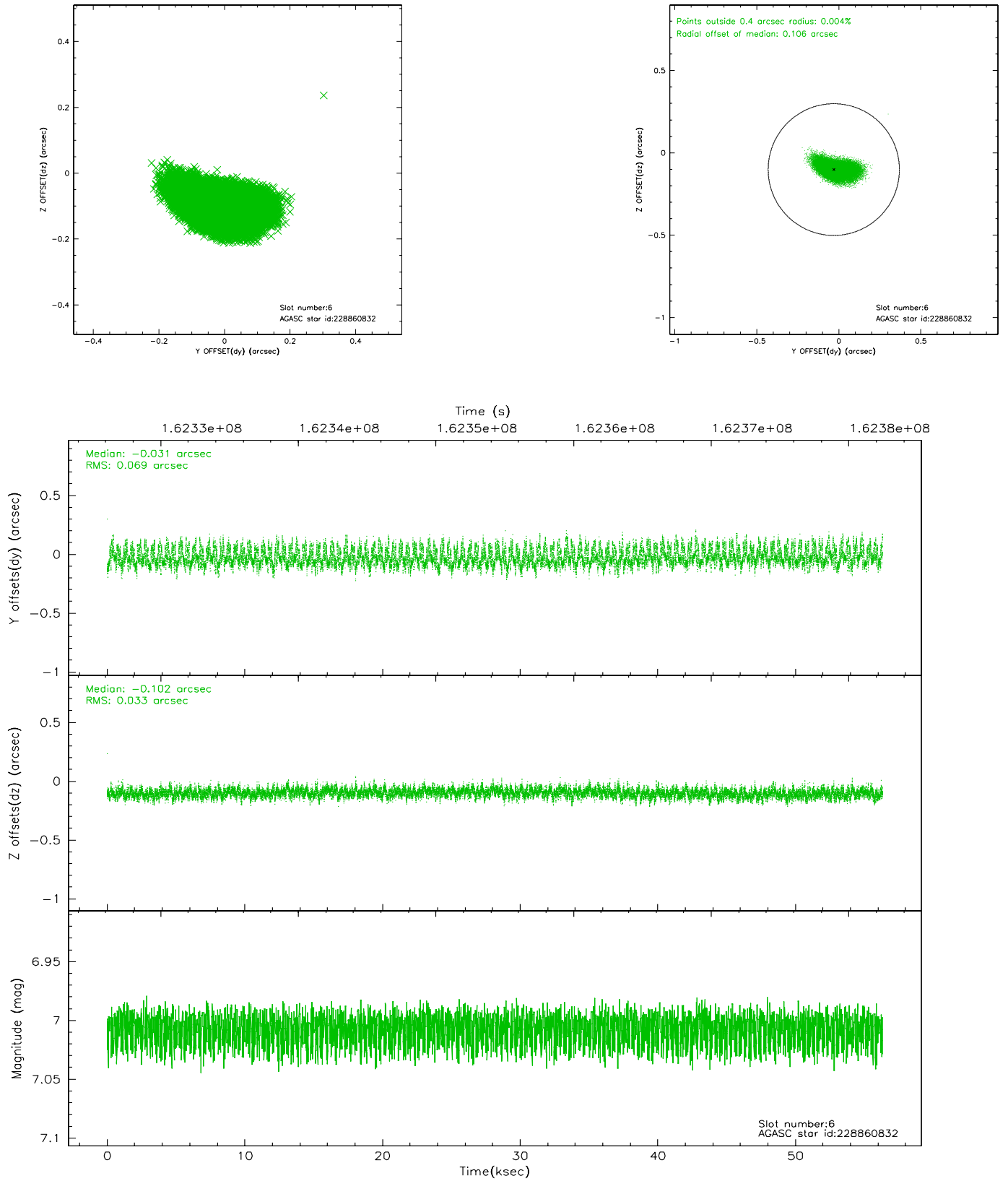
2.4.2 Slot 4



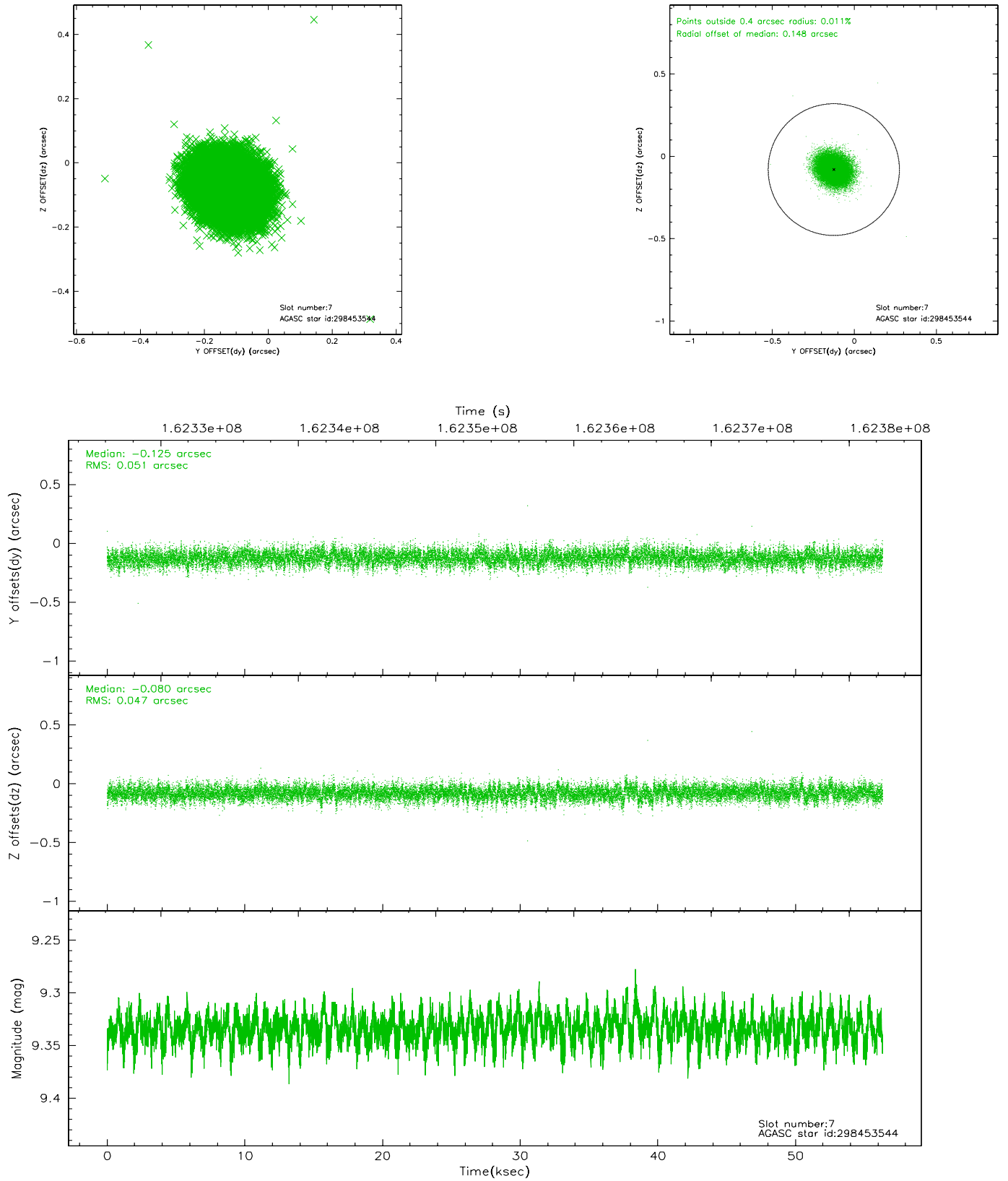
2.4.3 Slot 5



2.4.4 Slot 6

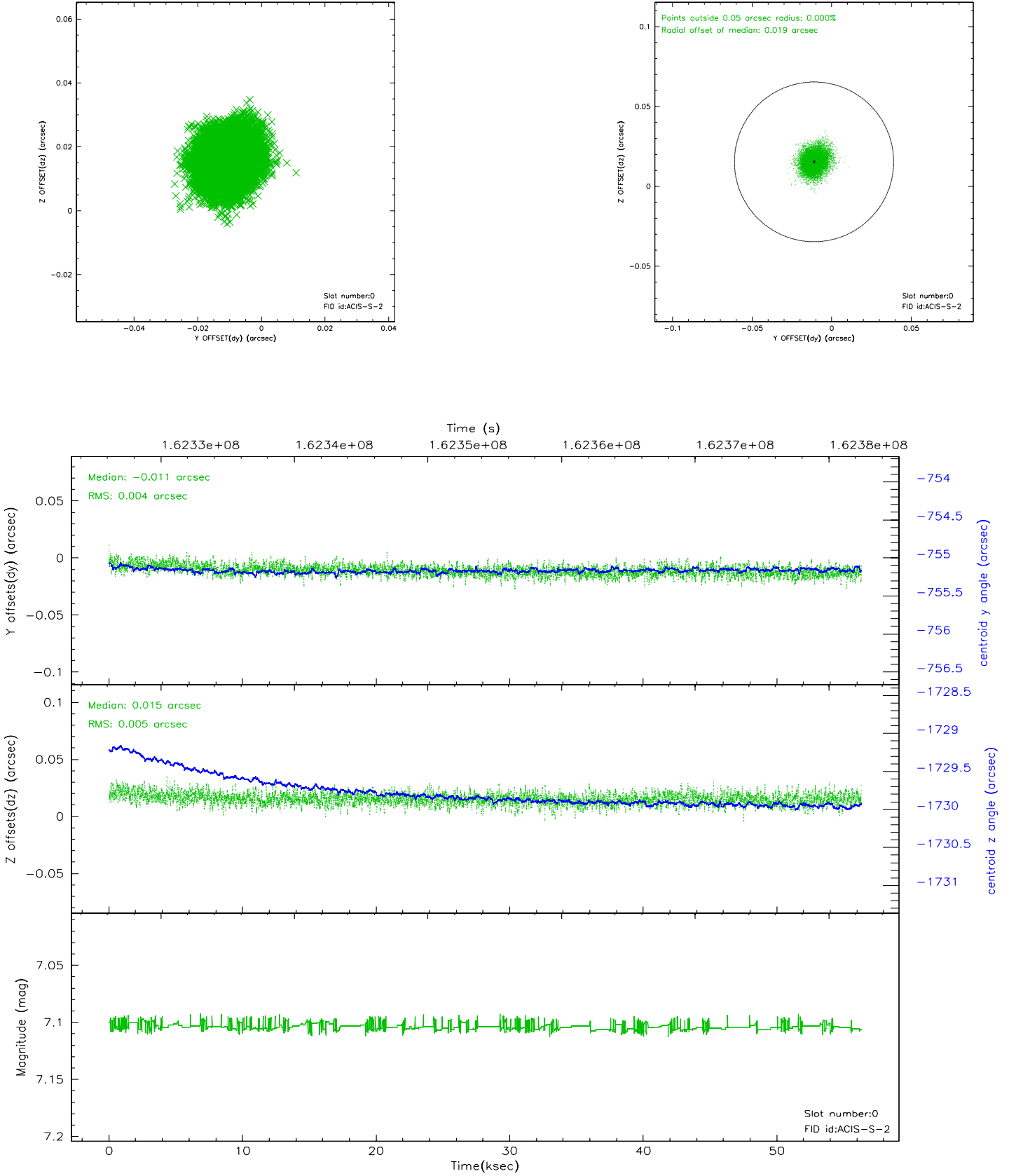


2.4.5 Slot 7

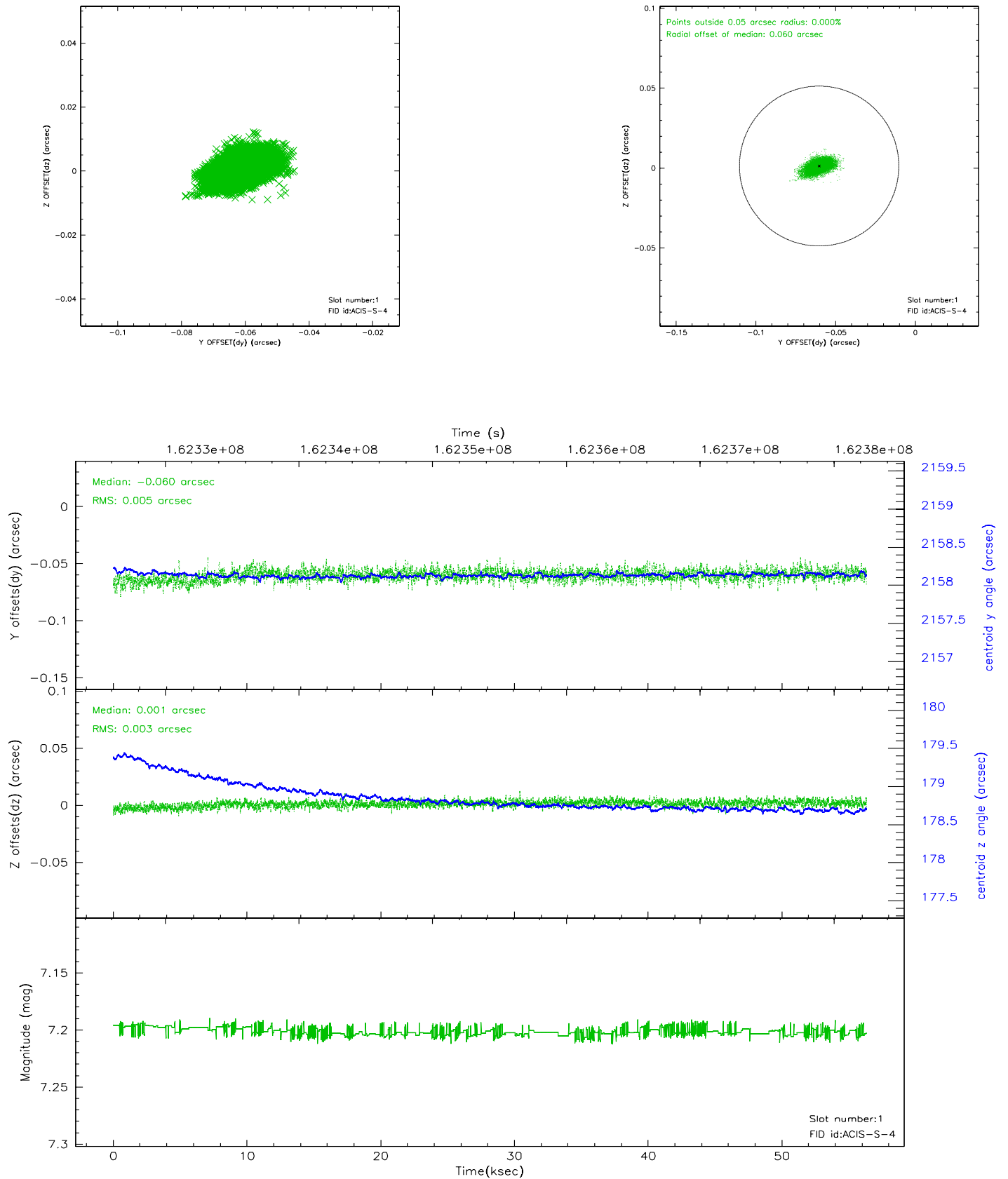


2.5 FID Slots

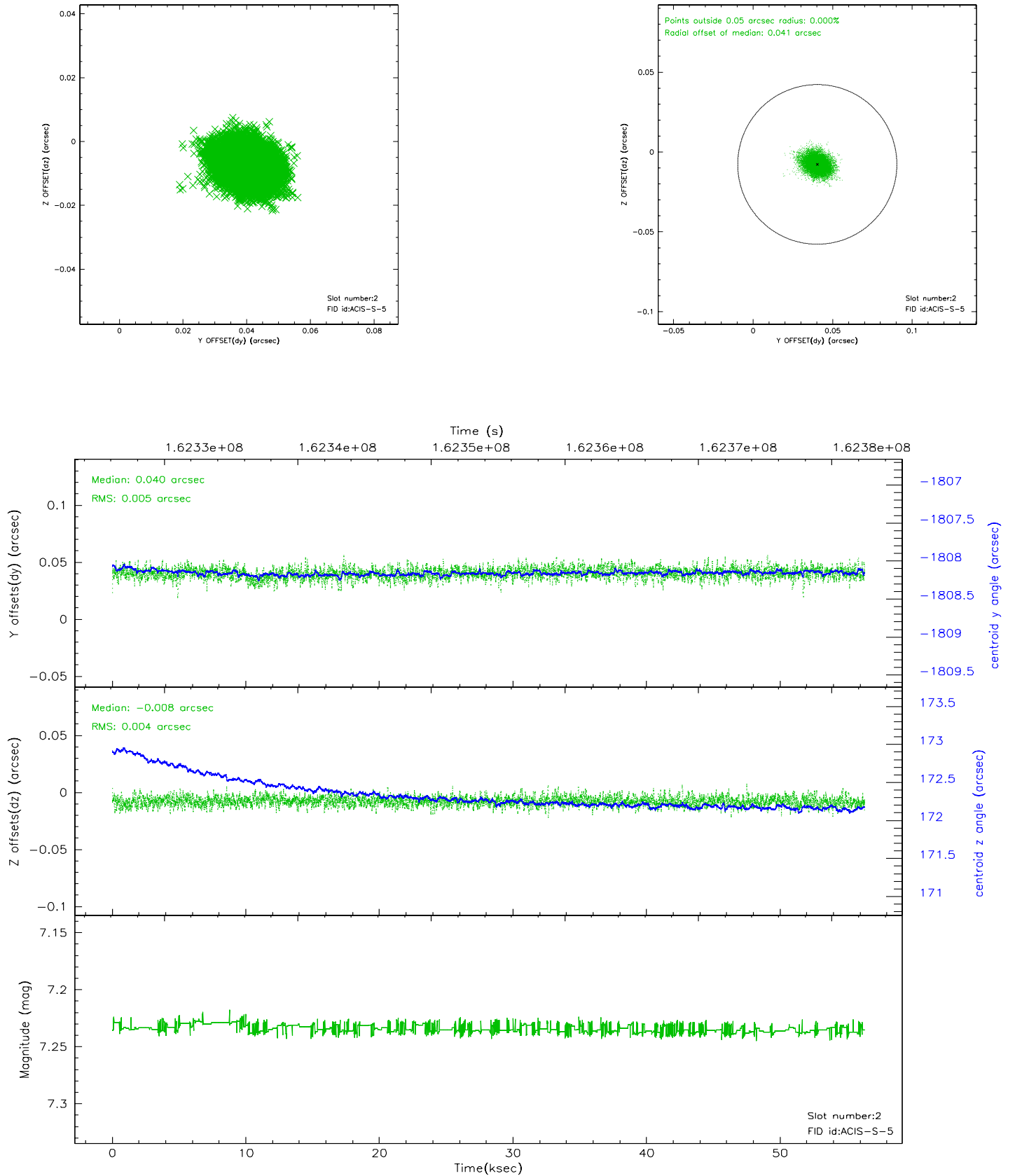
2.5.1 Slot 0



2.5.2 Slot 1



2.5.3 Slot 2

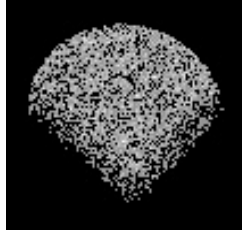


3 Point Sources

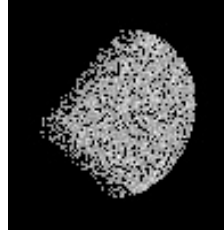
3.12 arcmin



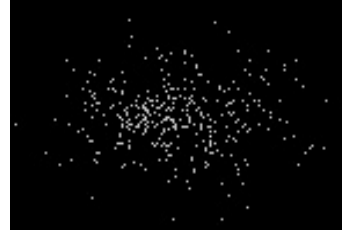
18.44 arcmin



18.30 arcmin



4.43 arcmin



A Summary

A.1 Status

V&V Scientist	Jen Lauer
V&V Date (YYYY-MM-DD)	2006.07.28
V&V Edition	1
V&V Disposition and Status	OK
V&V Charge Time	56.174

A.2 Comments

Roll preference met.