

V&V Reference Report

L2 ASCDS Version : 7.6.8

Observation 4086 - L2 Version 001
Chandra X-Ray Center

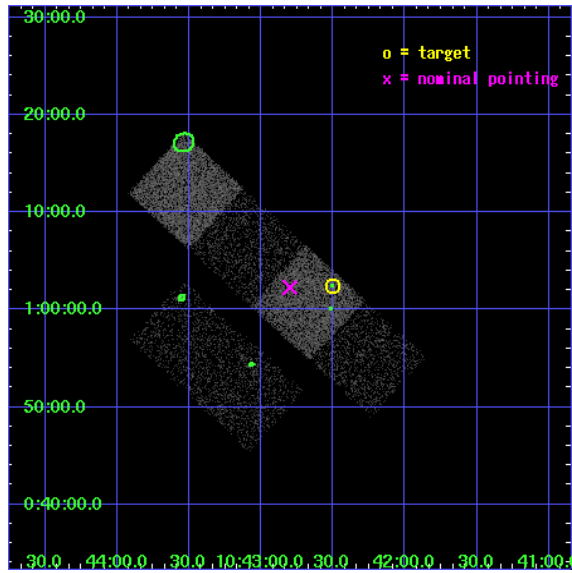
L2 Processing Date : Jul 27 2006

Contents

1	Front	2
2	OBI	3
2.1	OBI	3
2.1.1	Images	3
2.1.2	Bias	3
2.1.3	Parameters	4
2.1.4	Events	4
2.2	Compared Parameters	5
2.3	Aspect	6
2.4	Star Slots	9
2.4.1	Slot 3	9
2.4.2	Slot 4	10
2.4.3	Slot 5	11
2.4.4	Slot 6	12
2.4.5	Slot 7	13
2.5	FID Slots	14
2.5.1	Slot 0	14
2.5.2	Slot 1	15
2.5.3	Slot 2	16
3	Point Sources	17
A	Summary	18
A.1	Status	18
A.2	Comments	18

1 Front

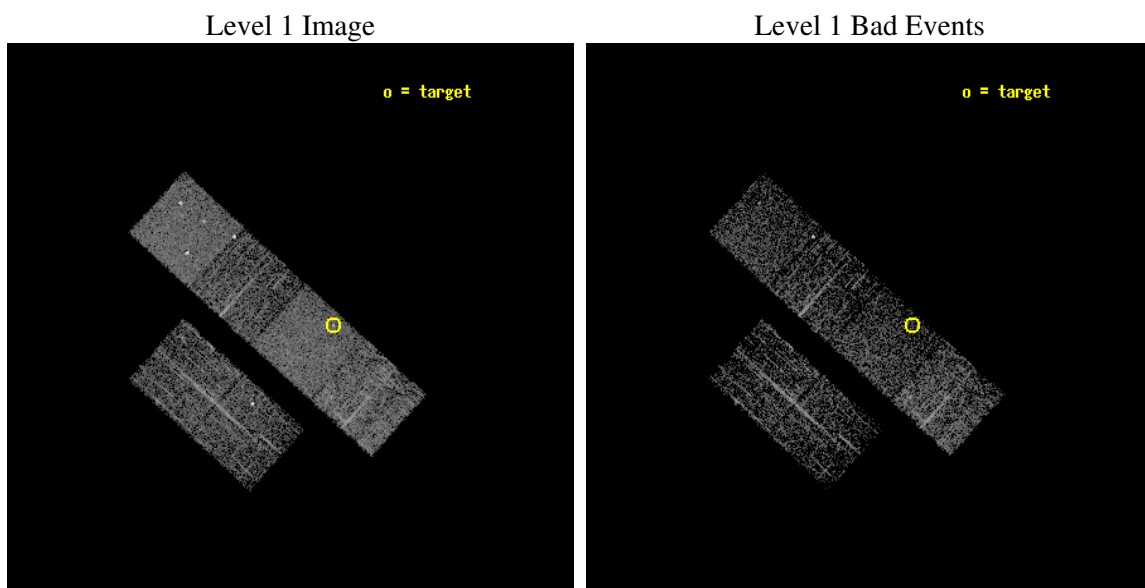
seq_num	700765
obs_id	4086
title	ARE ALL NARROW-LINE SEYFERT 1S ULTRASOFT X-RAY SOURCES?
observer	Prof RICHARD POGGE
object	SDSS J104230.14+010223.7
dtcycle	0
cycle	P
ra_targ	160.625417
dec_targ	1.039917
ra_nom	160.70004815371
dec_nom	1.0377732613933
roll_nom	42.284857219587
revision	2
ontime	1756.7999934554
livetime	1734.5543341203
ontime2	1756.7999934554
ontime3	1756.7999934554
ontime5	1756.7999934554
ontime6	1756.7999934554
ontime7	1756.7999934554
ontime8	1753.5590032041
l2events	21562



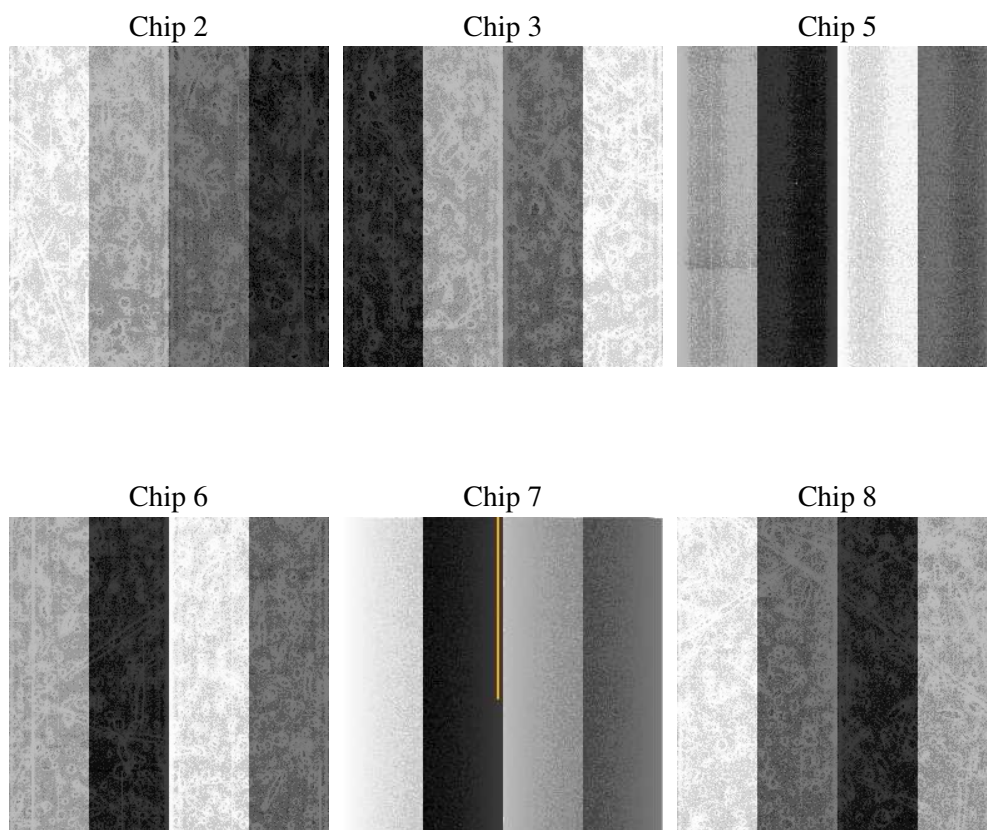
2 OBI

2.1 OBI

2.1.1 Images



2.1.2 Bias



2.1.3 Parameters

obi_num	0
ascdsver	7.6.8
caldsver	3.2.2
date	2006-07-27T15:05:12
revision	2

sched_exp_time	2000.000000
ontime	1759.868783772
ontime2	1759.868783772
ontime3	1759.8688036799
ontime5	1759.8688036799
ontime6	1759.8688036799
ontime7	1759.868783772
ontime8	1756.6277039051
l1events	89425

2.1.4 Events

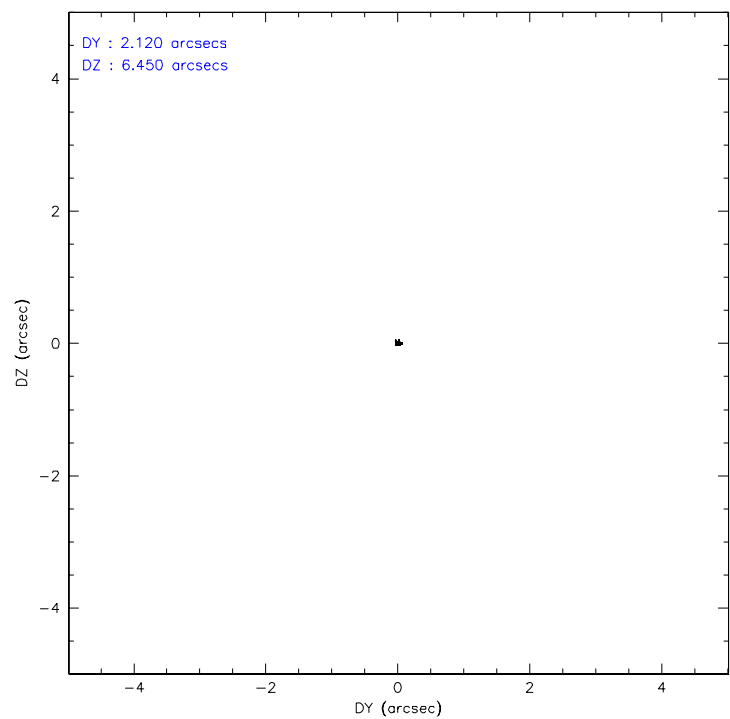
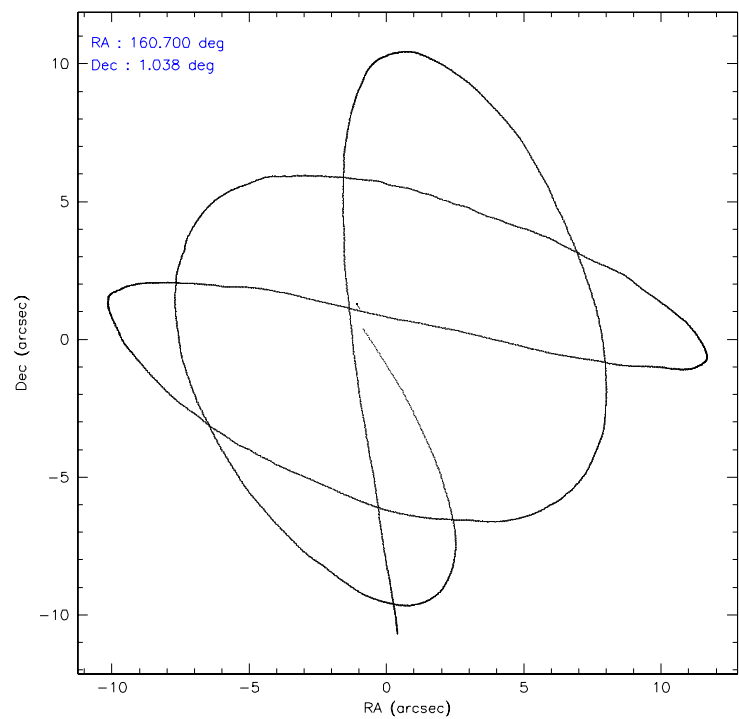
	ccd 2	ccd 3	ccd 5	ccd 6	ccd 7	ccd 8
level 1 events	11980	11241	19136	11563	17154	18351
rejected events	10591	9179	9518	9991	9550	14847
rejected %	88%	81%	49%	86%	55%	80%

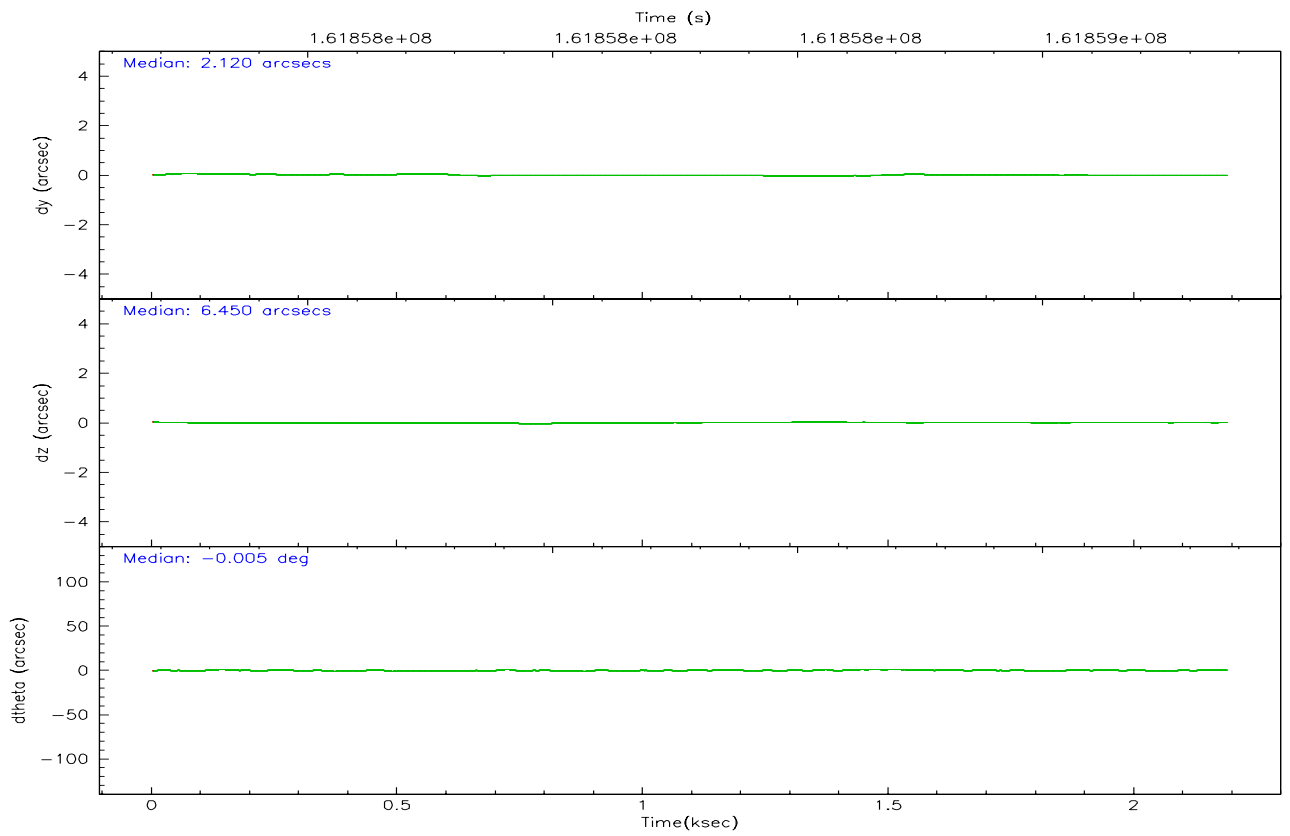
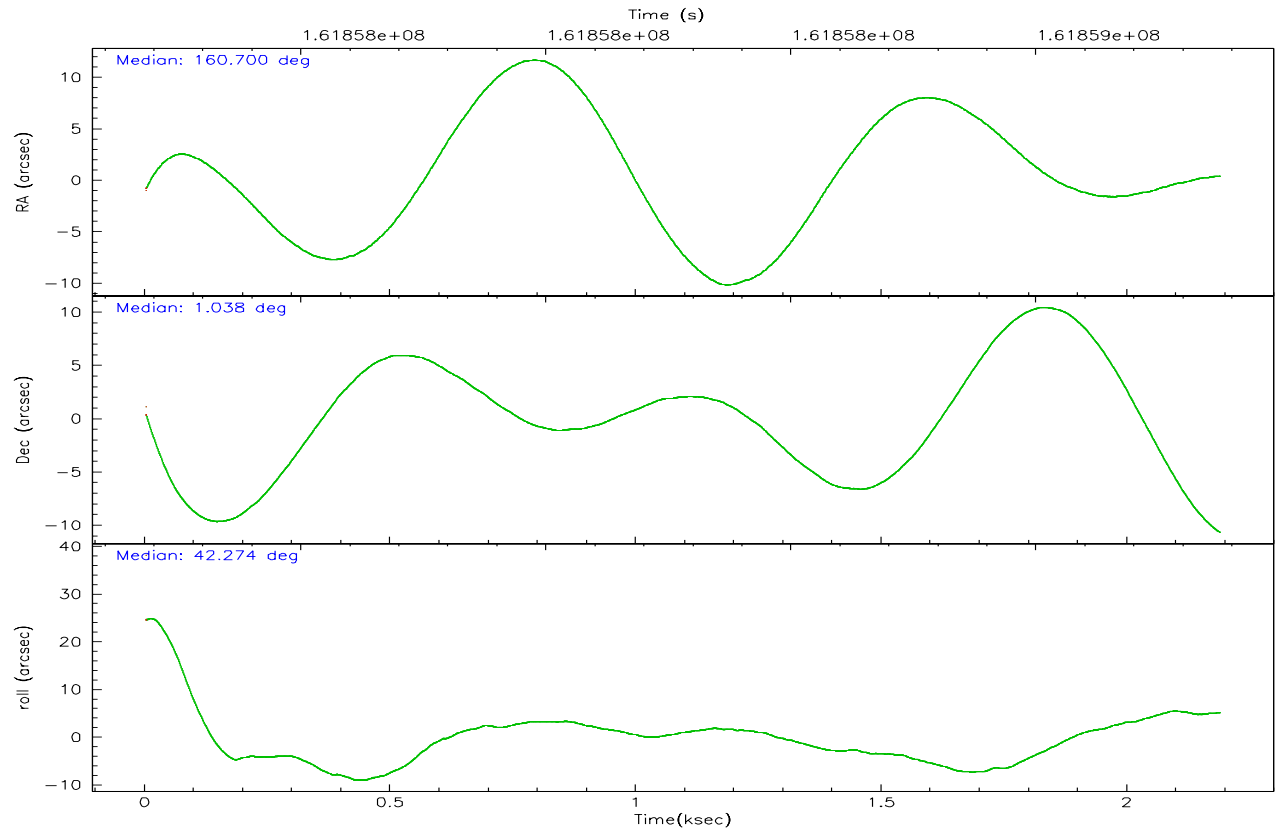
	ccd 2	ccd 3	ccd 5	ccd 6	ccd 7	ccd 8
grade 0 events	675	1174	1425	747	522	1152
	5%	10%	7%	6%	3%	6%
grade 1 events	6	14	179	3	9	16
	0%	0%	0%	0%	0%	0%
grade 2 events	258	316	2723	299	1712	693
	2%	2%	14%	2%	9%	3%
grade 3 events	108	154	252	129	417	400
	0%	1%	1%	1%	2%	2%
grade 4 events	125	164	224	122	424	393
	1%	1%	1%	1%	2%	2%
grade 5 events	397	474	945	555	1099	638
	3%	4%	4%	4%	6%	3%
grade 6 events	225	260	5009	277	4537	885
	1%	2%	26%	2%	26%	4%
grade 7 events	10186	8685	8379	9431	8434	14174
	85%	77%	43%	81%	49%	77%

2.2 Compared Parameters

Parameter	Planned	Actual	Parameter	Planned	Actual
Instrument	ACIS	ACIS	Obspar format version number	6	6
Detector	ACIS-235678	ACIS-235678	Obspar file type	PREDICTED	ACTUAL
Grating	NONE	NONE	Obspar update status	NONE	UPDATED
Data mode	FAINT	FAINT	On-chip summing requested	N	N
Observation mode	POINTING	POINTING	Subarray requested	NONE	NONE
Pointing RA	160.692226	160.7000481537139	Alternating exposures requested	N	N
Pointing Dec	1.011786	1.037773261393318	Primary exposure time	0.000000	3.2
Pointing Roll	42.128236	42.28485721958676			
SIM focus pos (mm)	-0.684267	-0.6828225247311905			
SIM defocus (mm)	0	0.001444936568705701			
SIM translation stage pos (mm)	-190.132523	-190.1400660498719			
SIM translation stage offset (mm)	0	0.00754346686406393			
Observation start time	161857376.184000	161856445.00118			
Observation start date	2003-02-17T08:21:52	2003-02-17T08:07:25			
Observation end time	161859376.184000	161859929.48882			
Observation end date	2003-02-17T08:55:12	2003-02-17T09:05:29			
Read mode	TIMED	TIMED			

2.3 Aspect



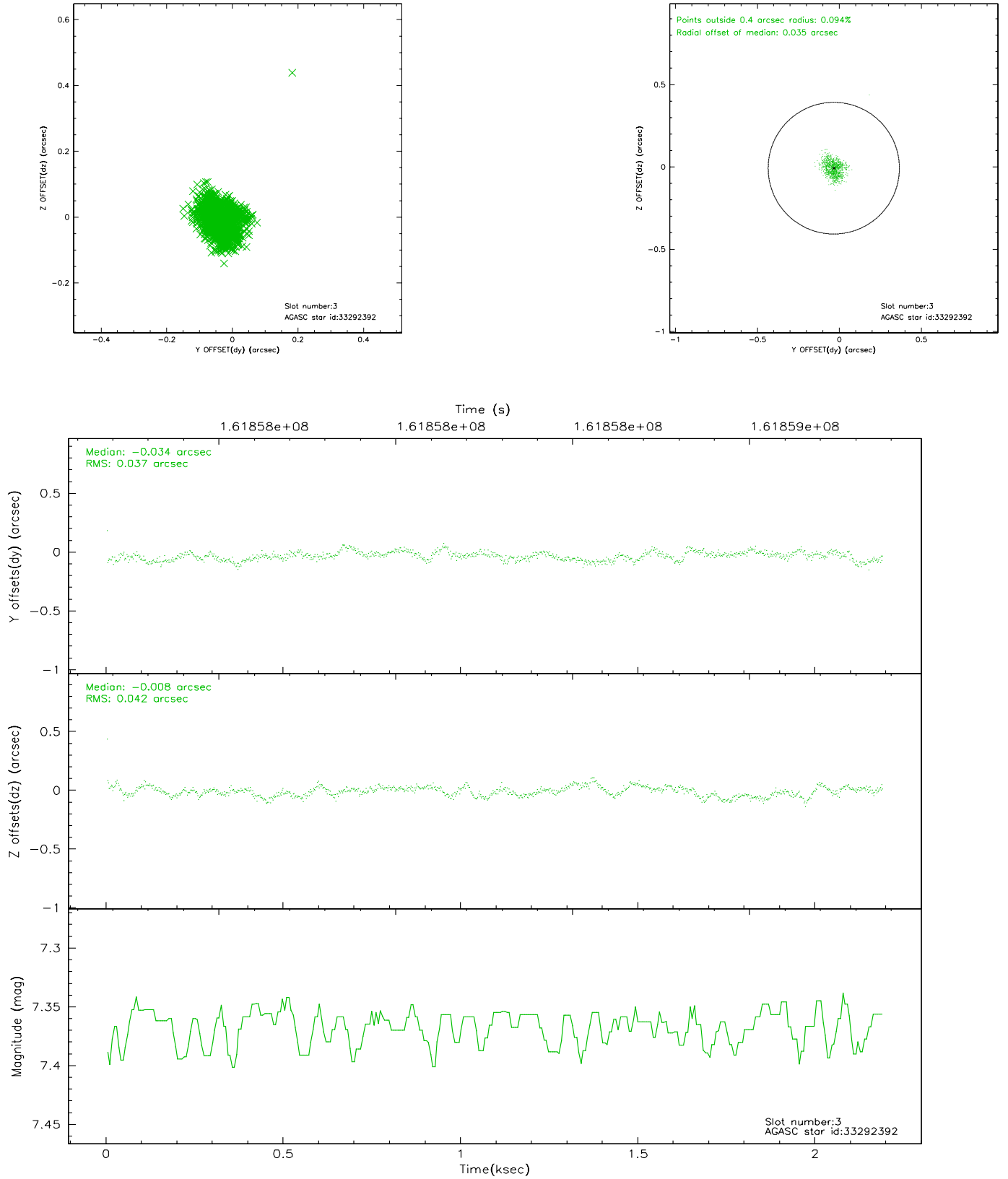


Slot Statistics

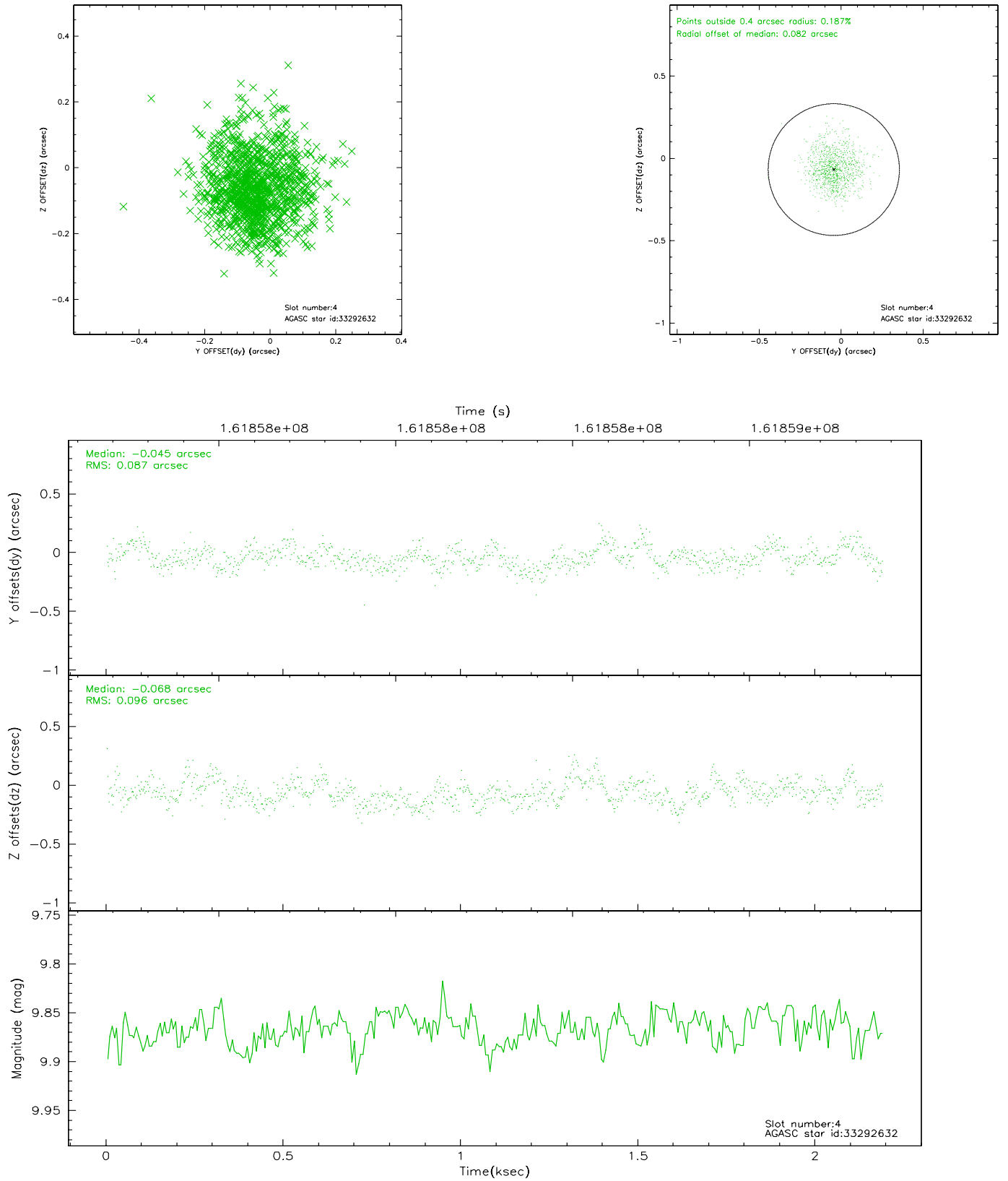
slot	status	id	mag	n_pts	med_dy	med_dz	dr1	dr2	ra	dec	mean_y	mean_z
0	FID	ACIS-S-2	7.11	534	-0.031	0.032	0.006	0.009	0.000000	0.000000	-754.75	-1727.58
1	FID	ACIS-S-4	7.20	534	-0.051	0.007	0.005	0.010	0.000000	0.000000	2157.14	177.85
2	FID	ACIS-S-5	7.24	534	0.052	-0.030	0.006	0.010	0.000000	0.000000	-1803.70	174.81
3	GUIDE	33292392	7.37	1068	-0.034	-0.008	0.058	0.090	160.590849	0.862137	-631.43	-154.70
4	GUIDE	33292632	9.87	1067	-0.045	-0.068	0.137	0.224	160.006920	0.869927	-2172.16	1275.70
5	GUIDE	33294552	9.80	1068	-0.018	0.051	0.095	0.164	160.730104	0.876072	-227.94	-452.48
6	GUIDE	33299432	9.46	1068	-0.040	0.091	0.101	0.163	161.254689	0.755910	884.63	-2041.31
7	GUIDE	33296928	9.90	1067	0.143	-0.063	0.118	0.198	160.423496	1.234212	-179.05	1240.90

2.4 Star Slots

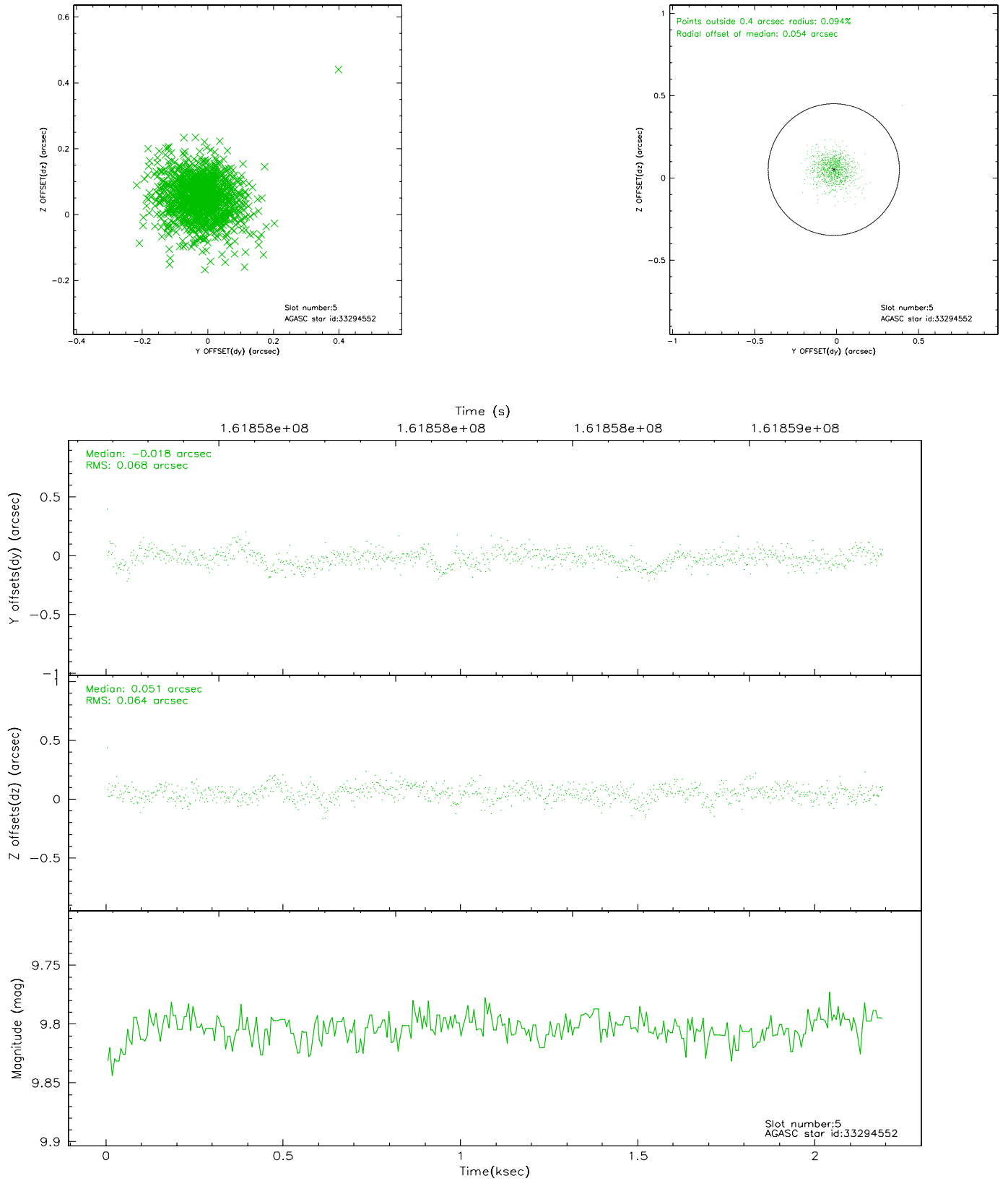
2.4.1 Slot 3



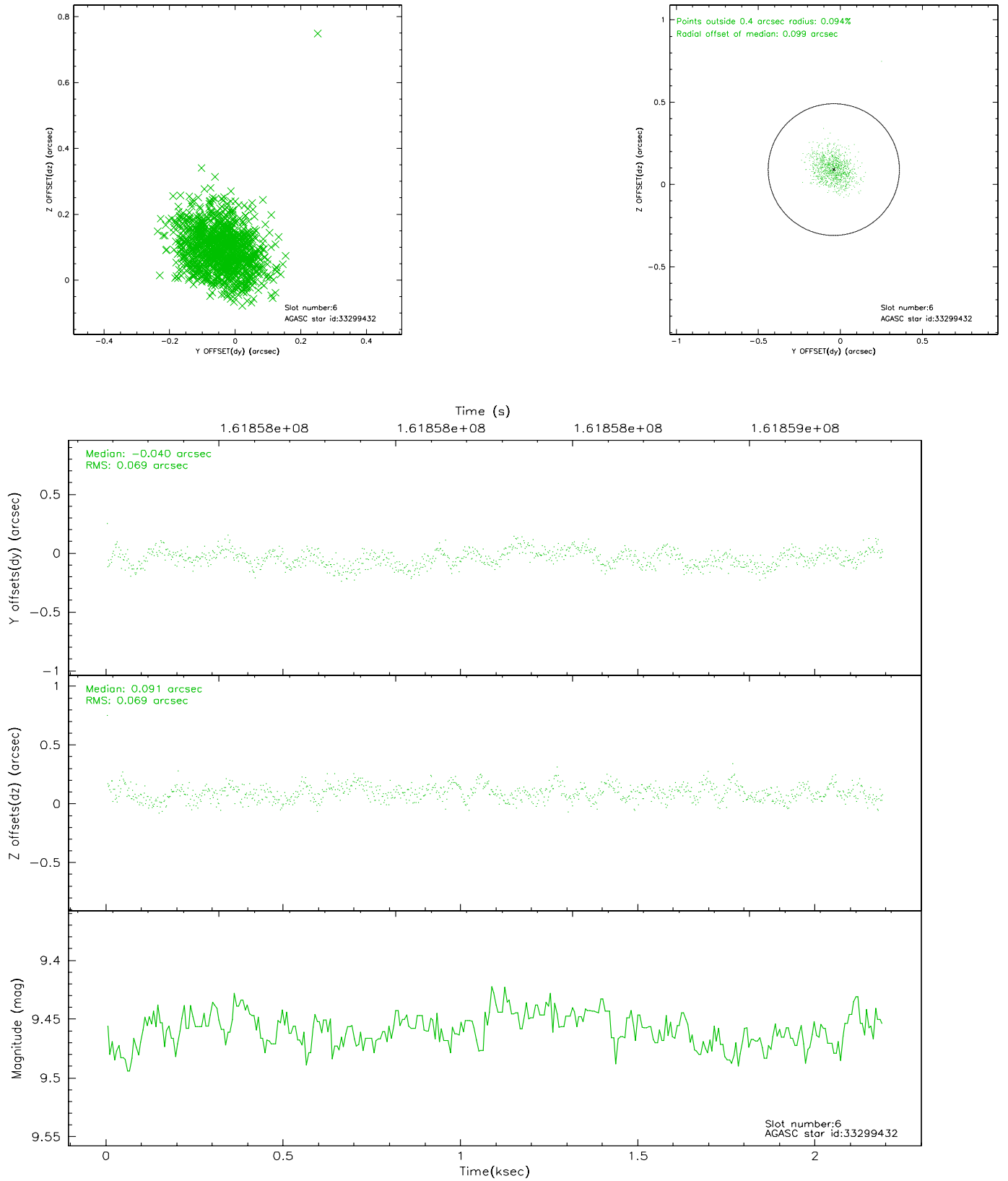
2.4.2 Slot 4



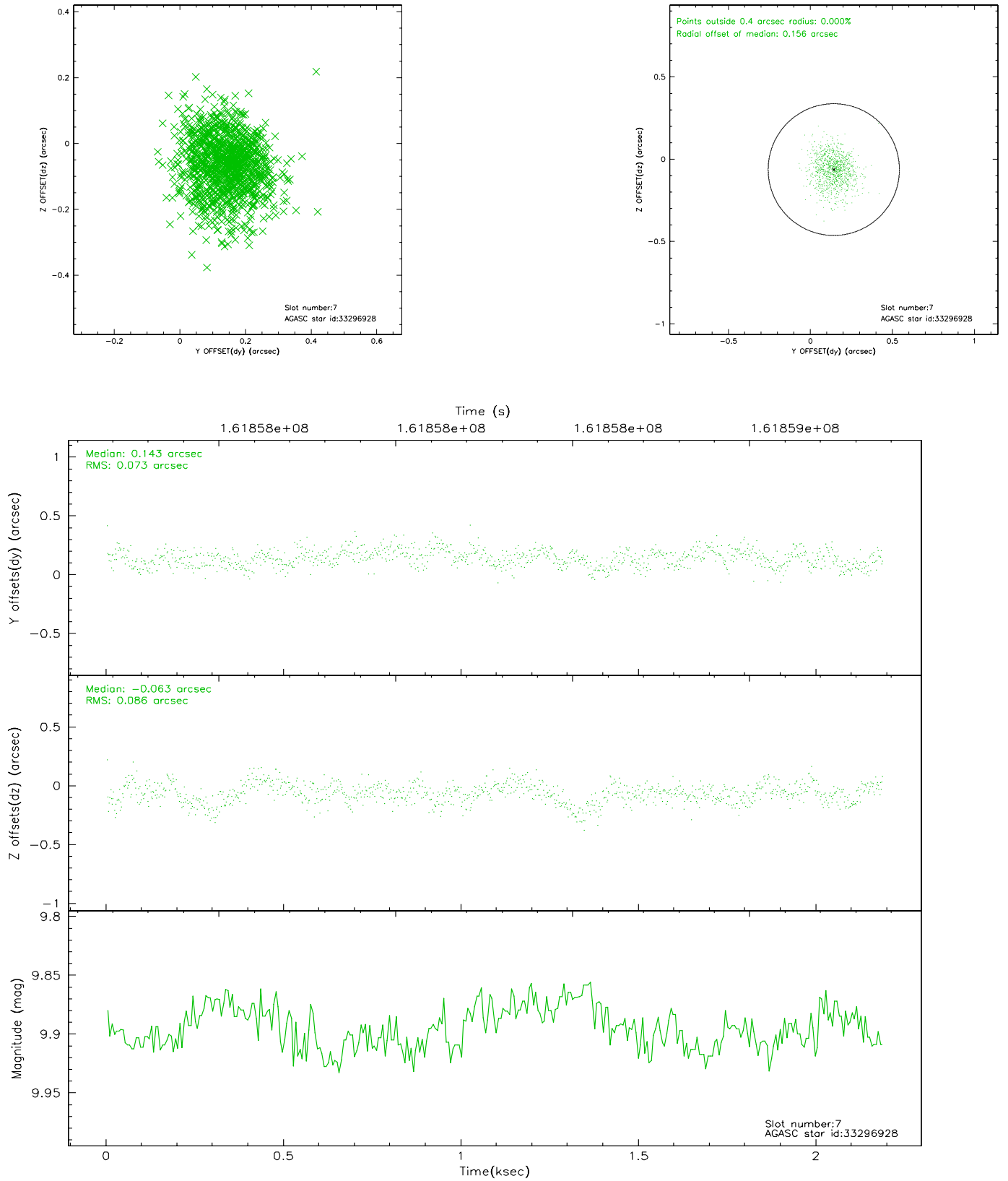
2.4.3 Slot 5



2.4.4 Slot 6

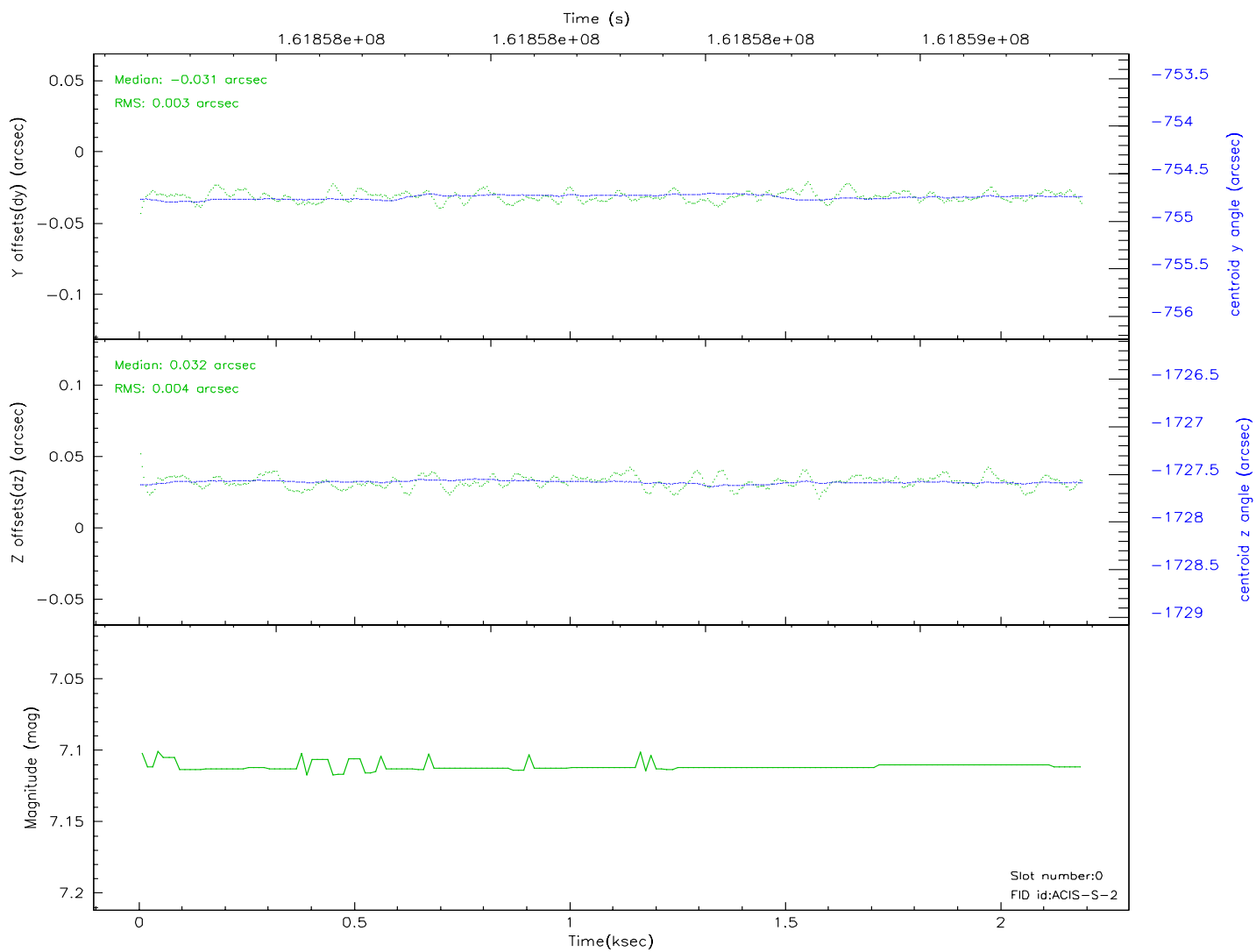
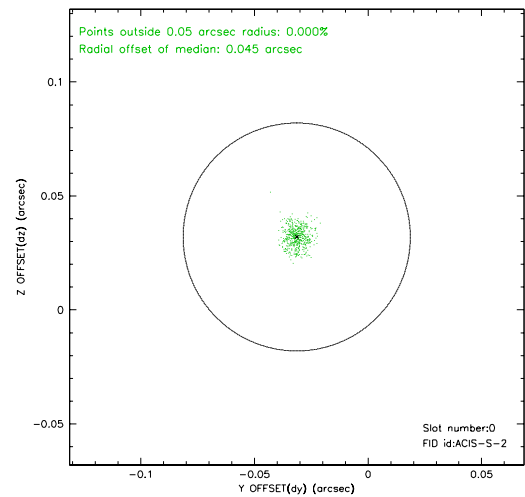
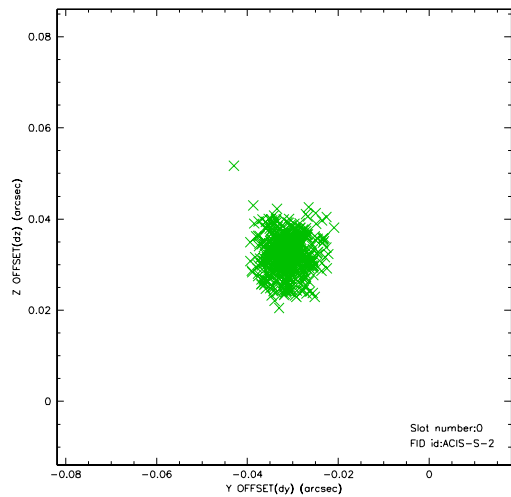


2.4.5 Slot 7

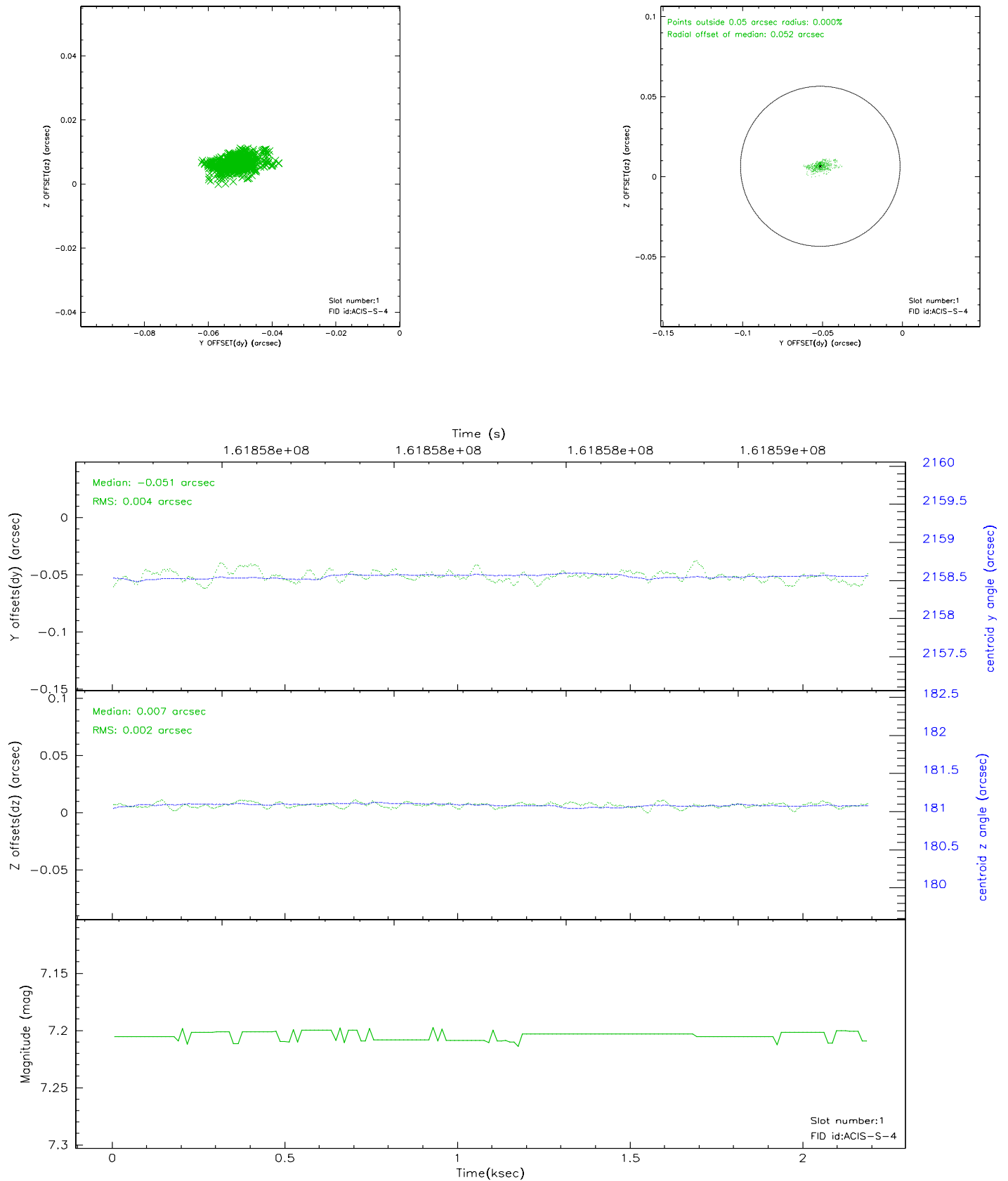


2.5 FID Slots

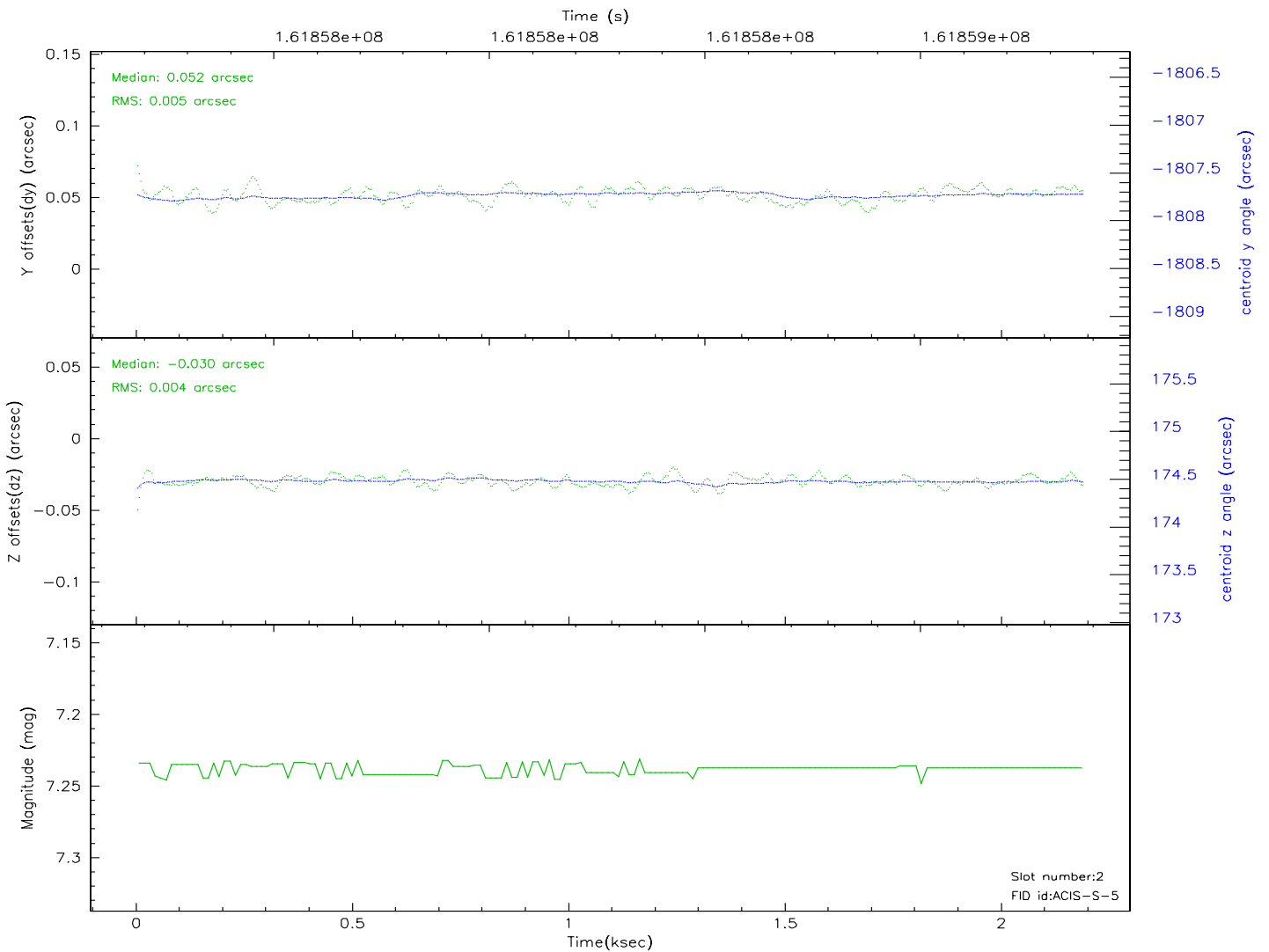
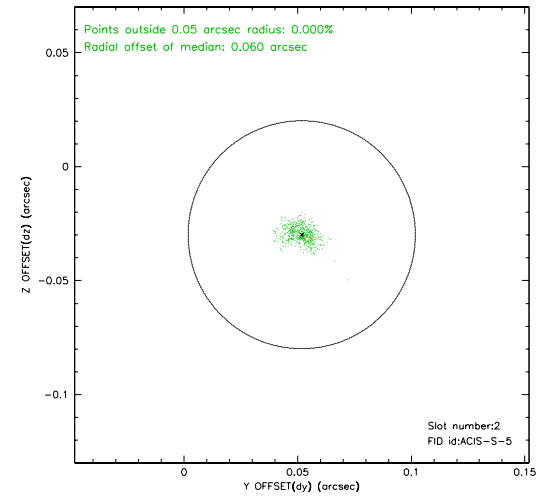
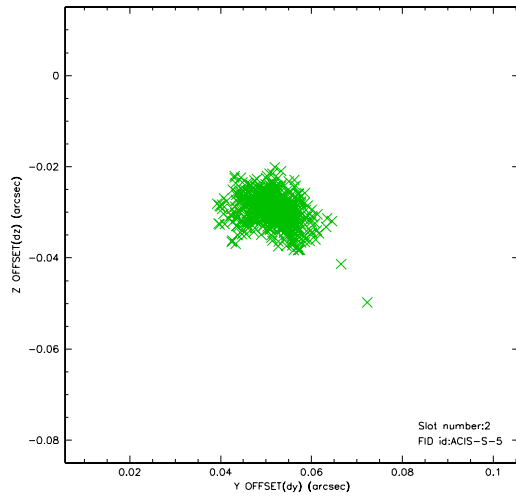
2.5.1 Slot 0



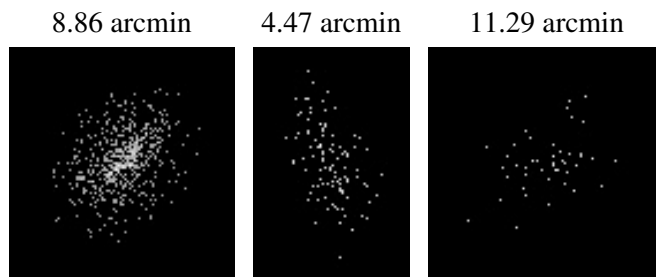
2.5.2 Slot 1



2.5.3 Slot 2



3 Point Sources



A Summary

A.1 Status

V&V Scientist	Jen Lauer
V&V Date (YYYY-MM-DD)	2006.07.27
V&V Edition	1
V&V Disposition and Status	OK
V&V Charge Time	1.756

A.2 Comments