

# V&V Reference Report

## L2 ASCDS Version : 7.6.8

Observation 3656 - L2 Version 001  
Chandra X-Ray Center

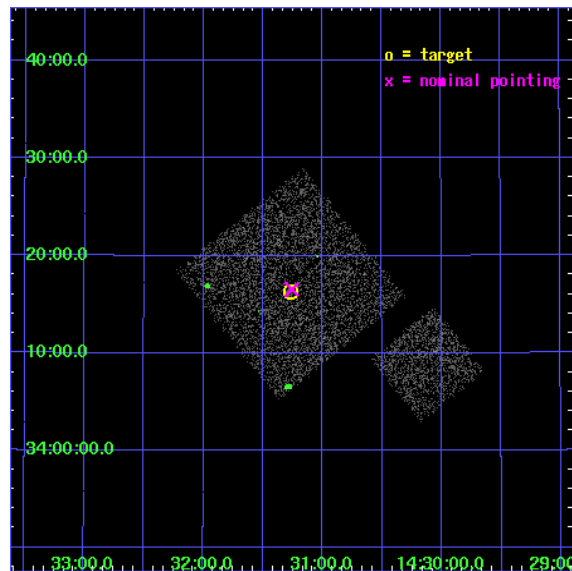
L2 Processing Date : Jul 29 2006

## Contents

<b>1</b>	<b>Front</b>	<b>2</b>
<b>2</b>	<b>OBI</b>	<b>3</b>
2.1	OBI . . . . .	3
2.1.1	Images . . . . .	3
2.1.2	Bias . . . . .	3
2.1.3	Parameters . . . . .	4
2.1.4	Events . . . . .	4
2.2	Compared Parameters . . . . .	5
2.3	Aspect . . . . .	6
2.4	Star Slots . . . . .	9
2.4.1	Slot 3 . . . . .	9
2.4.2	Slot 4 . . . . .	10
2.4.3	Slot 5 . . . . .	11
2.4.4	Slot 6 . . . . .	12
2.4.5	Slot 7 . . . . .	13
2.5	FID Slots . . . . .	14
2.5.1	Slot 0 . . . . .	14
2.5.2	Slot 1 . . . . .	15
2.5.3	Slot 2 . . . . .	16
<b>3</b>	<b>Point Sources</b>	<b>17</b>
<b>A</b>	<b>Summary</b>	<b>18</b>
A.1	Status . . . . .	18
A.2	Comments . . . . .	18

# 1 Front

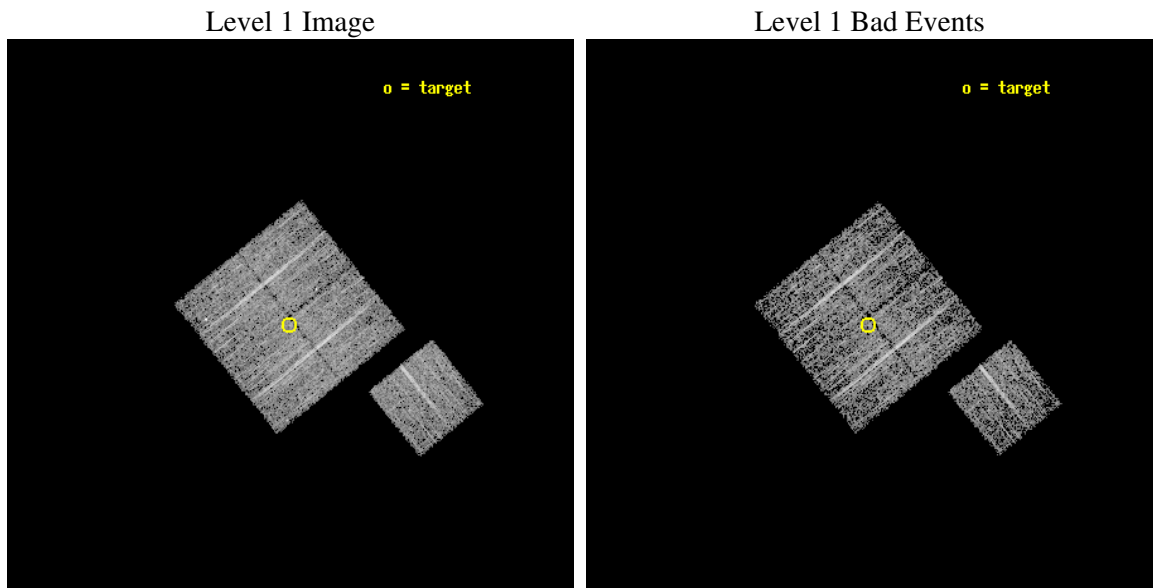
seq_num	900256
obs_id	3656
title	CHANDRA LARGE SCALE SURVEY OF THE NOAO BOOTES DEEP FIELD
observer	Dr. Stephen Murray
object	NOAO FIELD F22
dtcycle	0
cycle	P
ra_targ	217.816997
dec_targ	34.271694
ra_nom	217.81429051836
dec_nom	34.275746038102
roll_nom	141.01021858025
revision	2
ontime	4674.7999910116
livetime	4613.7202875914
ontime0	4674.7999910116
ontime1	4674.7999910116
ontime2	4674.7999910116
ontime3	4674.7999910116
ontime6	4674.7999910116
l2events	9570



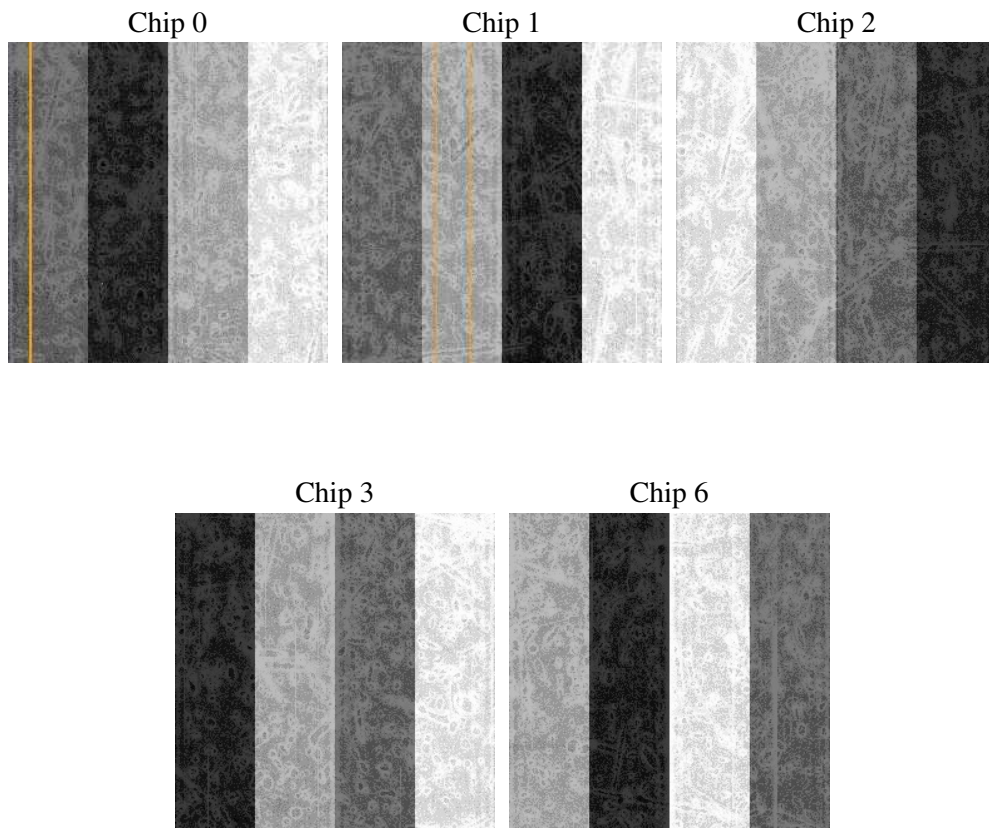
## 2 OBI

### 2.1 OBI

#### 2.1.1 Images



#### 2.1.2 Bias



### 2.1.3 Parameters

obi_num	1
ascdsver	7.6.8
caldbver	3.2.2
date	2006-07-29T20:32:51
revision	2

sched_exp_time	4900.000000
ontime	4680.1056873202
ontime0	4680.1056873202
ontime1	4680.1057071984
ontime2	4680.1056873202
ontime3	4680.1056873202
ontime6	4680.1057071984
l1events	114545

### 2.1.4 Events

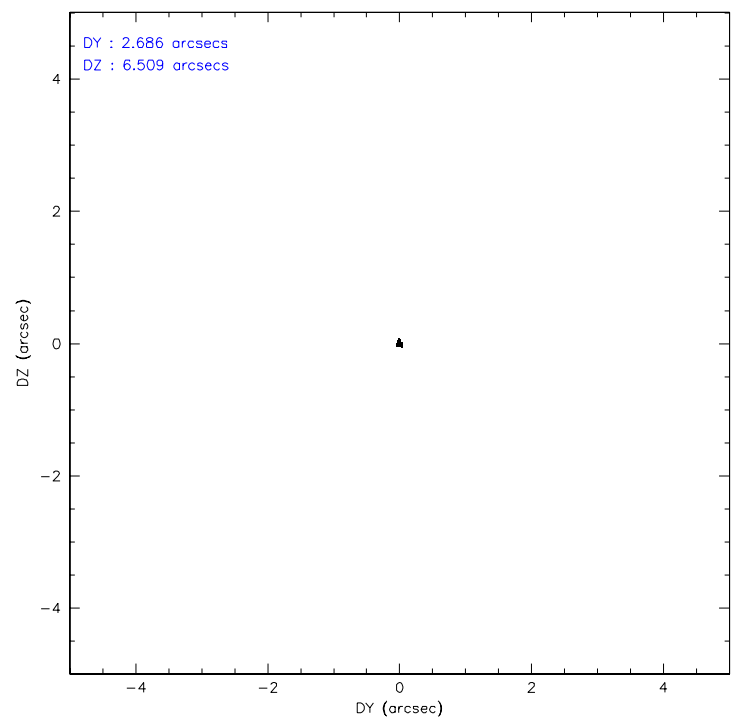
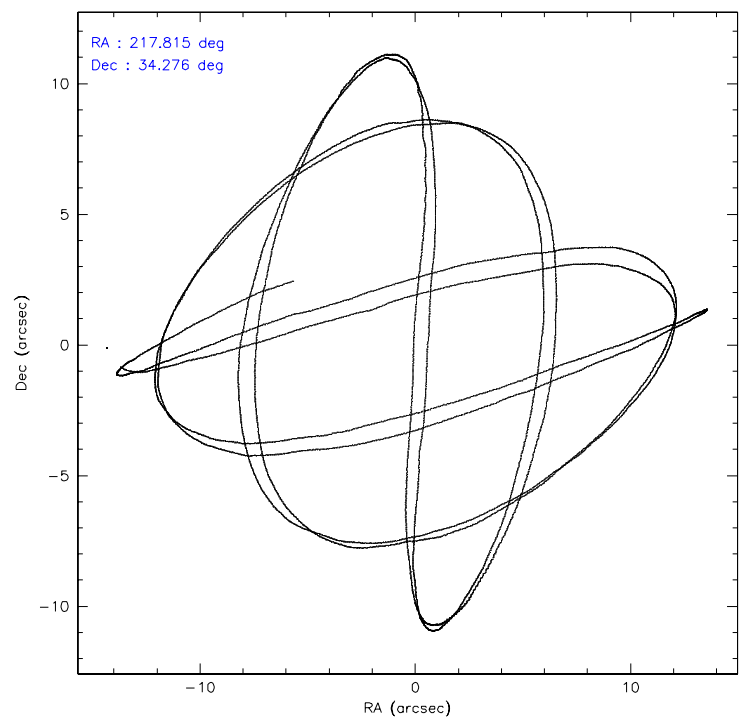
	ccd 0	ccd 1	ccd 2	ccd 3	ccd 6
level 1 events	22451	22621	23626	23944	21903
rejected events	20134	20023	21427	21729	19621
rejected %	89%	88%	90%	90%	89%

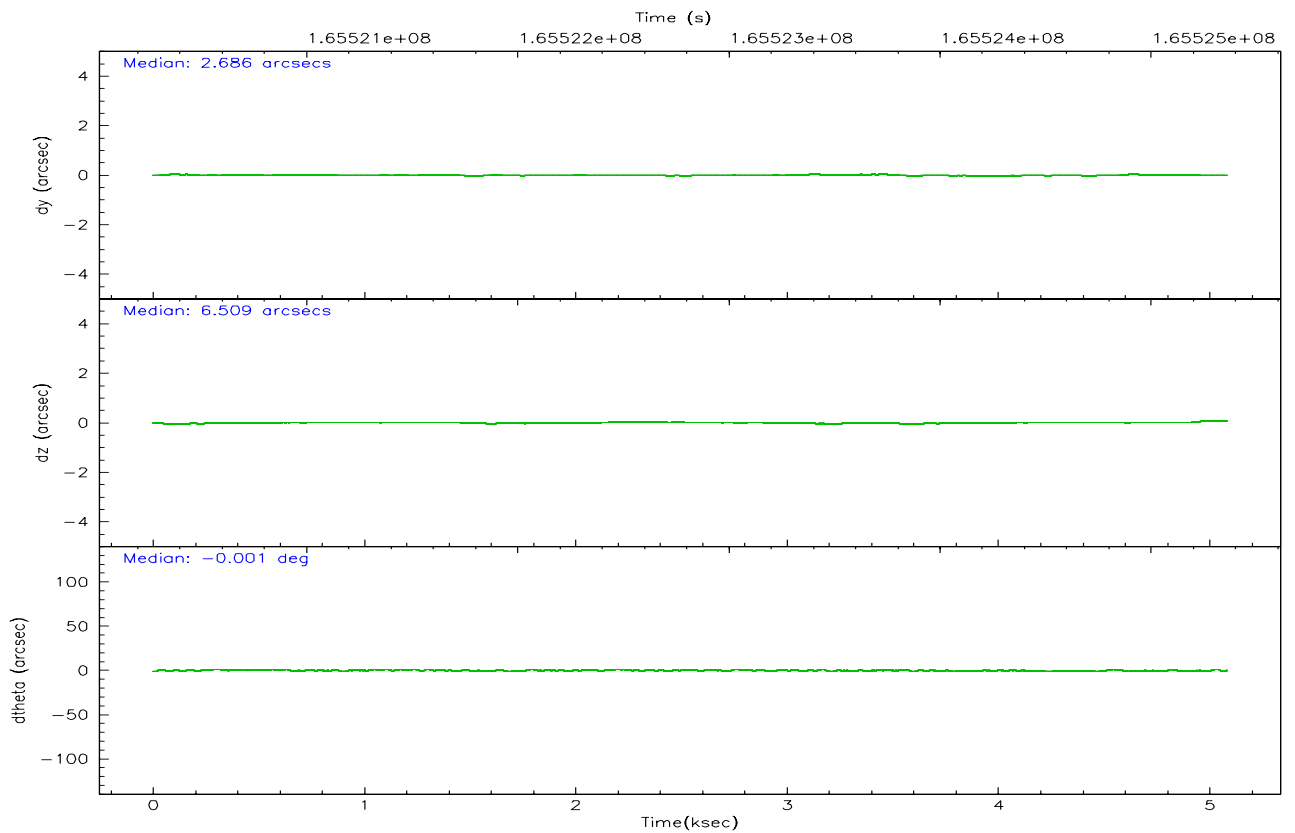
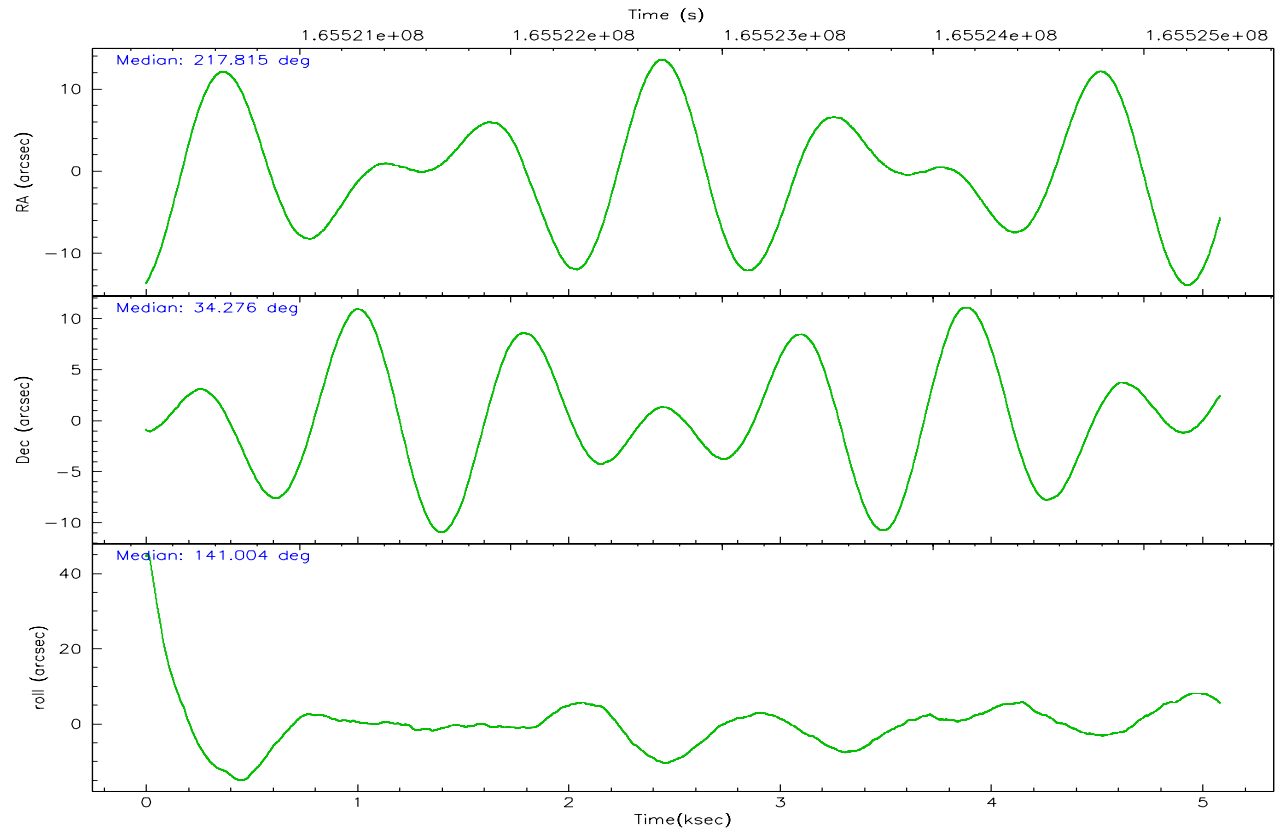
	ccd 0	ccd 1	ccd 2	ccd 3	ccd 6
grade 0 events	895	1013	788	883	849
	3%	4%	3%	3%	3%
grade 1 events	14	13	8	17	10
	0%	0%	0%	0%	0%
grade 2 events	550	535	561	448	460
	2%	2%	2%	1%	2%
grade 3 events	247	310	259	247	280
	1%	1%	1%	1%	1%
grade 4 events	238	301	248	239	266
	1%	1%	1%	0%	1%
grade 5 events	638	739	673	730	708
	2%	3%	2%	3%	3%
grade 6 events	388	447	345	399	427
	1%	1%	1%	1%	1%
grade 7 events	19481	19263	20744	20981	18903
	86%	85%	87%	87%	86%

## 2.2 Compared Parameters

Parameter	Planned	Actual	Parameter	Planned	Actual
Instrument	ACIS	ACIS	Obspar format version number	6	6
Detector	ACIS-01236	ACIS-01236	Obspar file type	PREDICTED	ACTUAL
Grating	NONE	NONE	Obspar update status	NONE	UPDATED
Data mode	VFAINT	VFAINT	On-chip summing requested	N	N
Observation mode	POINTING	POINTING	Subarray requested	NONE	NONE
Pointing RA	217.847108	217.8142905183629	Alternating exposures requested	N	N
Pointing Dec	34.271615	34.27574603810195	Primary exposure time	0.000000	3.1
Pointing Roll	140.783045	141.0102185802534			
SIM focus pos (mm)	-0.782348	-0.7809083437167272			
SIM defocus (mm)	0	0.001439871863259334			
SIM translation stage pos (mm)	-233.592463	-233.5874344608287			
SIM translation stage offset (mm)	0	-0.005018542100998502			
Observation start time	165520454.184000	165520078.0554			
Observation start date	2003-03-31T17:53:10	2003-03-31T17:47:58			
Observation end time	165525354.184000	165525488.00563			
Observation end date	2003-03-31T19:14:50	2003-03-31T19:18:08			
Read mode	TIMED	TIMED			

### 2.3 Aspect





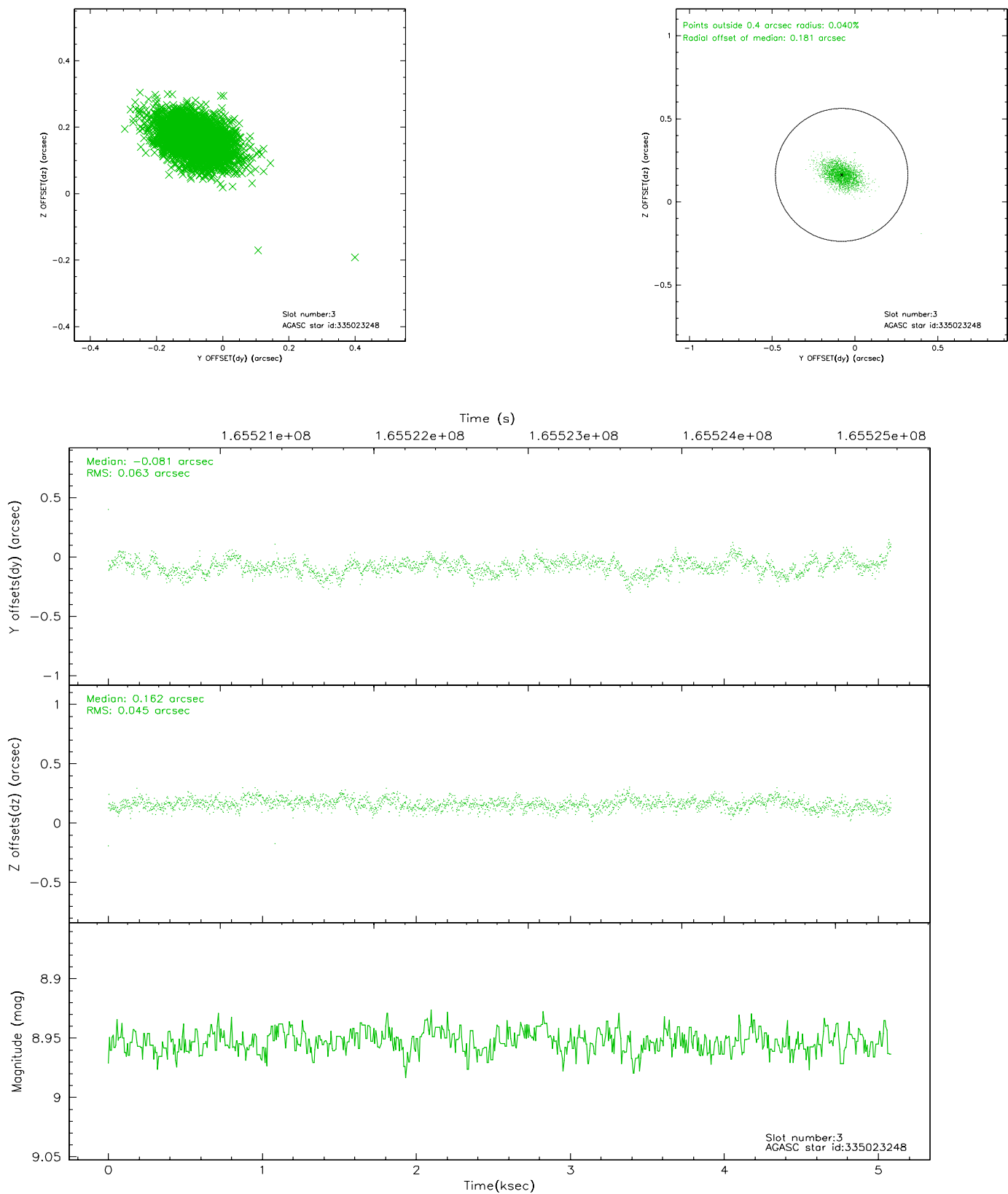
### Slot Statistics

slot	status	id	mag	n_pts	med_dy	med_dz	dr1	dr2	ra	dec	mean_y	mean_z
0	FID	ACIS-I-1	7.25	1240	-0.009	0.021	0.006	0.011	0.000000	0.000000	937.09	-829.88
1	FID	ACIS-I-5	7.24	1241	-0.050	0.043	0.006	0.010	0.000000	0.000000	-1810.36	1067.08
2	FID	ACIS-I-6	7.26	1240	-0.032	0.007	0.007	0.010	0.000000	0.000000	401.36	1712.86
3	GUIDE	335023248	8.95	2481	-0.081	0.162	0.081	0.136	217.634832	34.944512	2017.68	-1481.02
4	GUIDE	335025040	9.91	2452	0.047	0.078	0.182	0.288	218.601670	34.305240	-1655.45	-1519.86
5	GUIDE	335025848	9.72	2478	0.041	-0.211	0.116	0.193	217.530531	33.778292	-388.65	1972.78
6	GUIDE	335028696	9.22	2480	0.037	0.021	0.104	0.169	217.260519	33.844112	388.85	2298.13
7	GUIDE	335028336	9.50	2480	-0.053	-0.047	0.089	0.142	217.189840	34.665629	2408.91	127.65

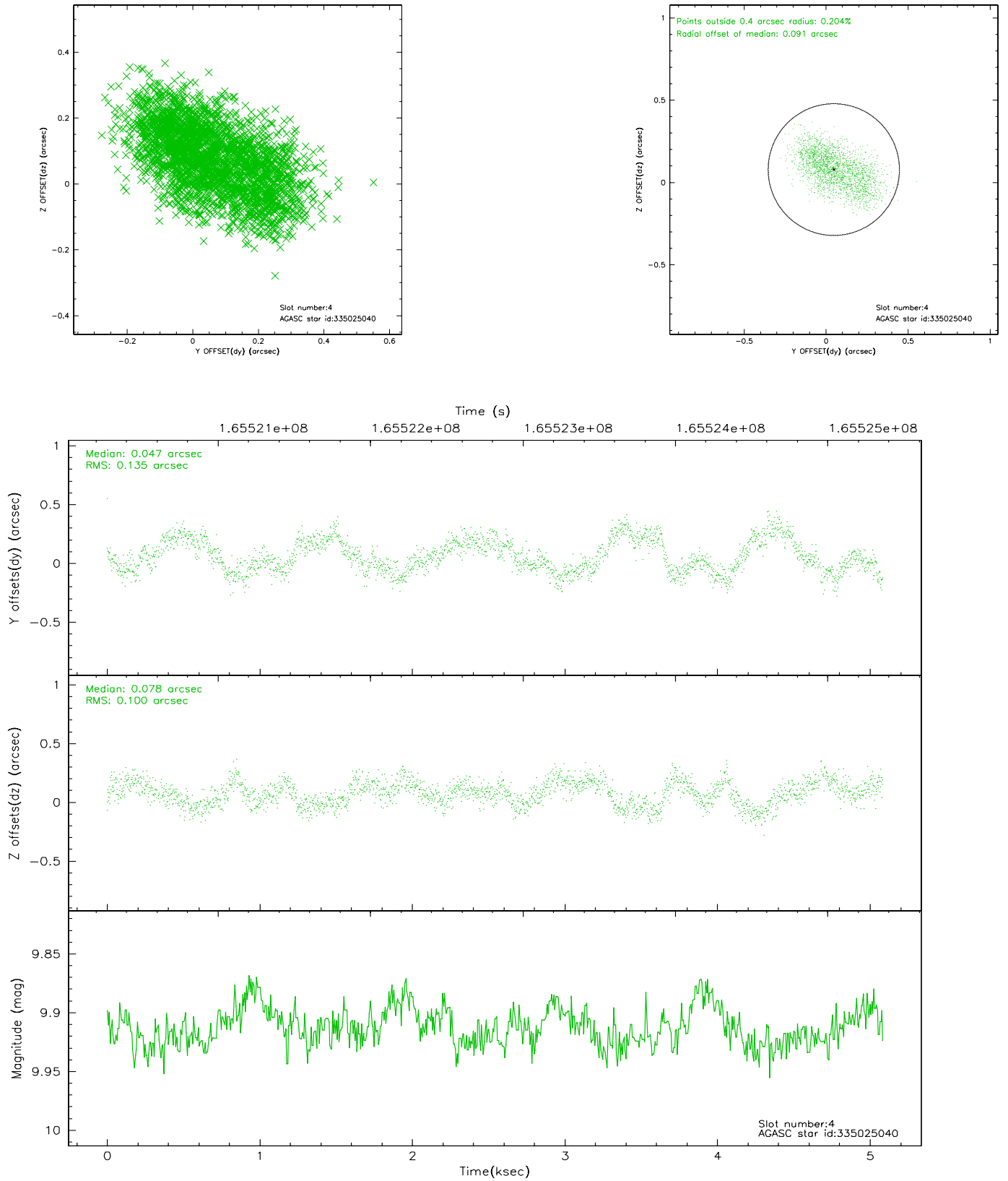


## 2.4 Star Slots

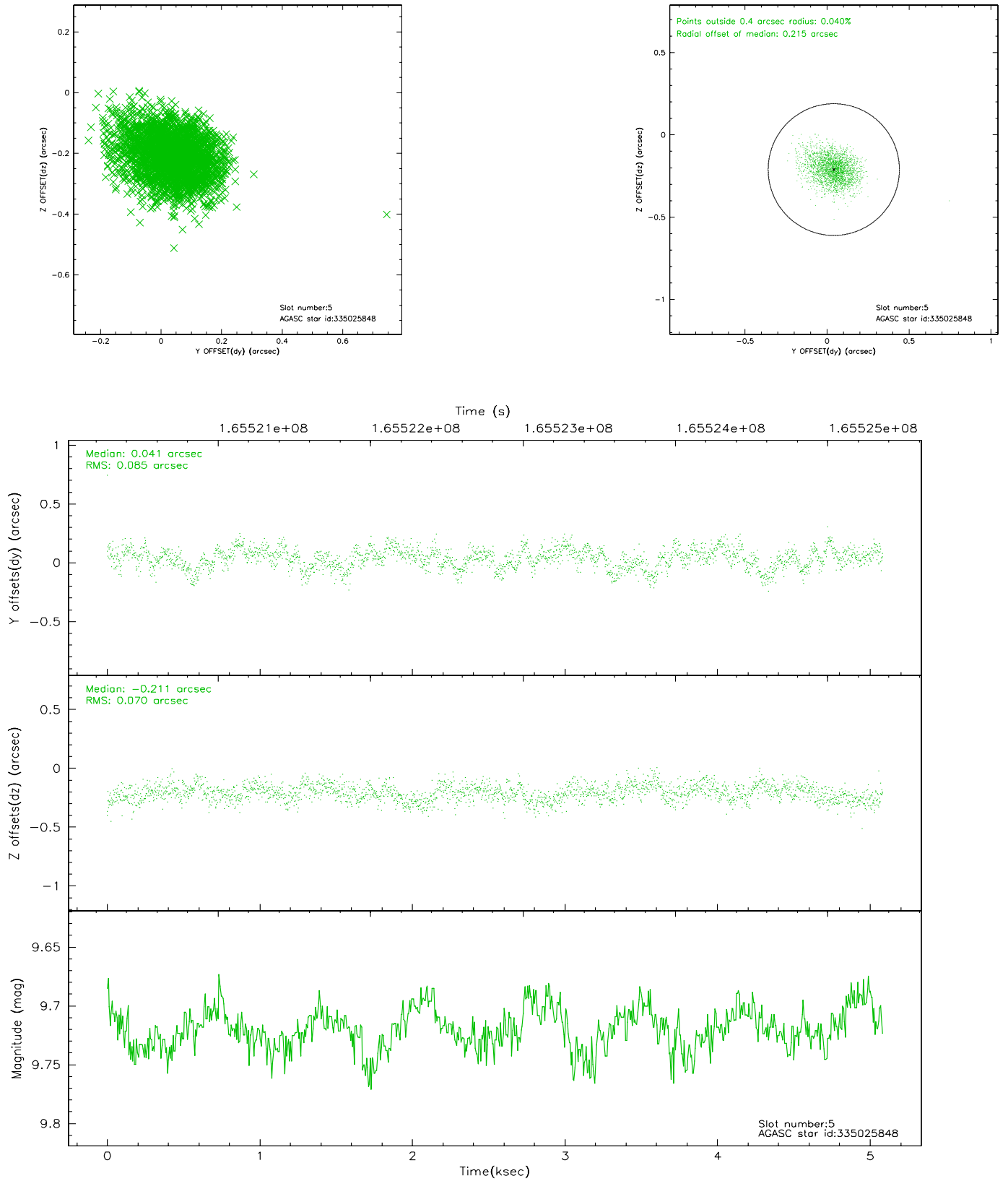
### 2.4.1 Slot 3



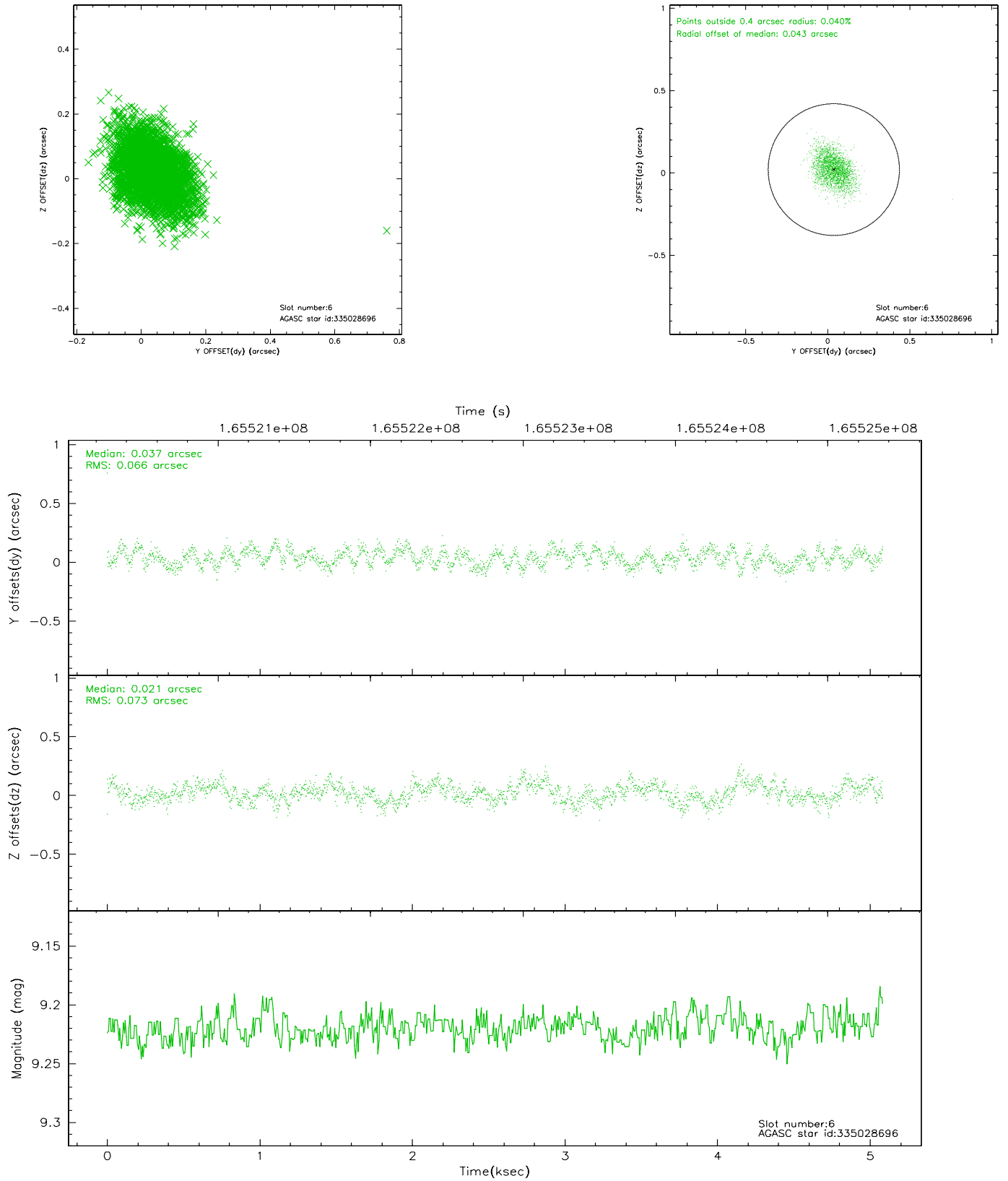
## 2.4.2 Slot 4



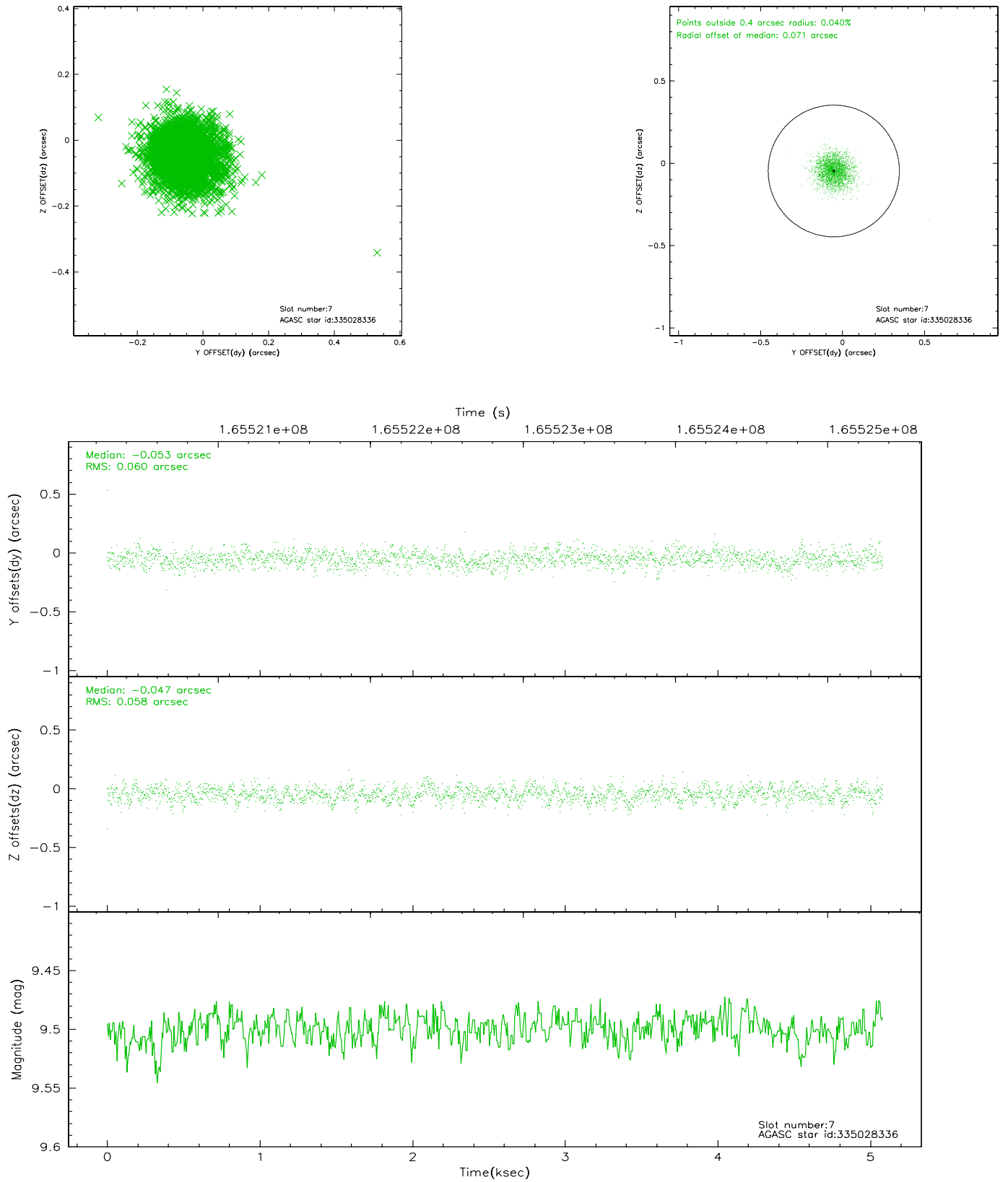
### 2.4.3 Slot 5



## 2.4.4 Slot 6

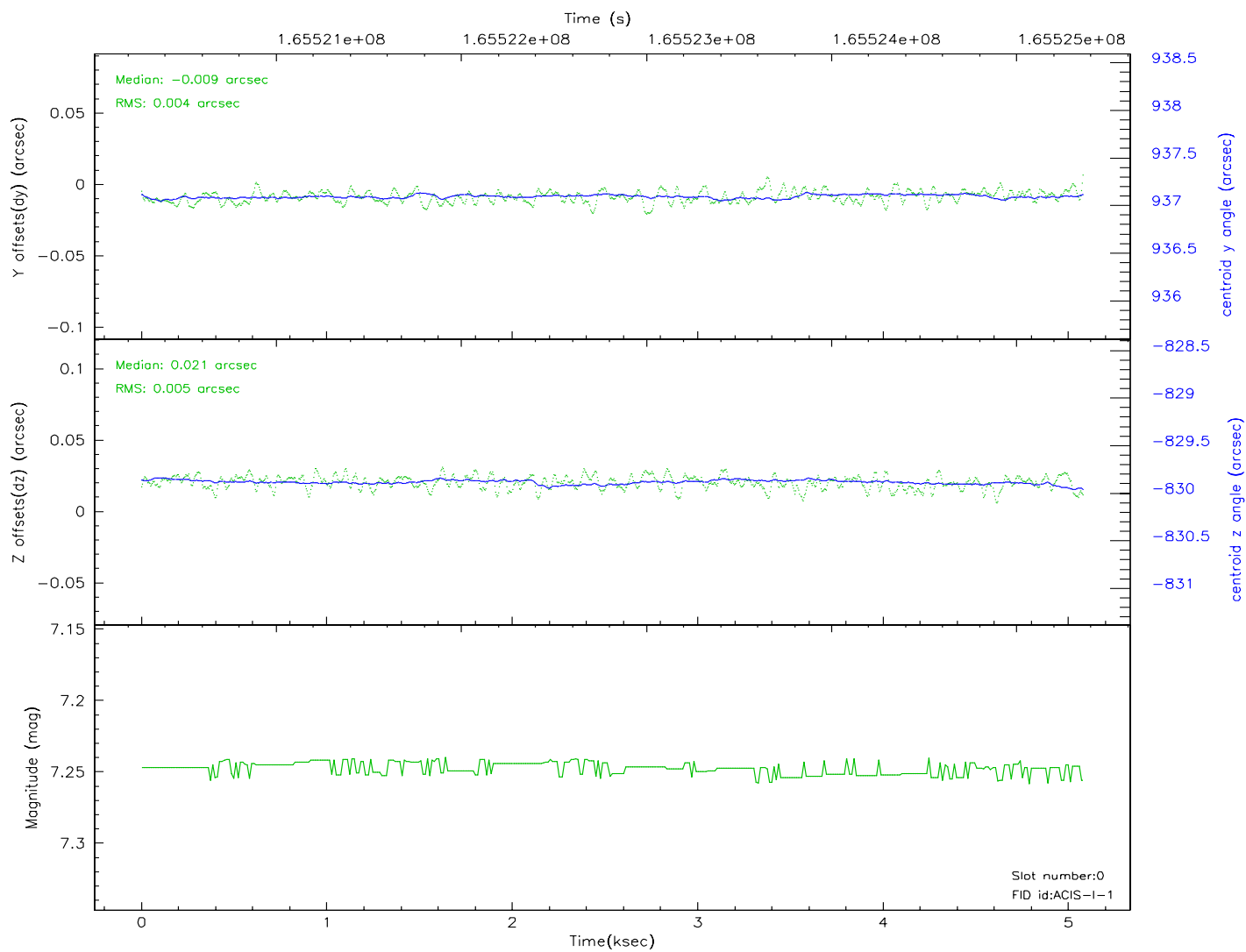
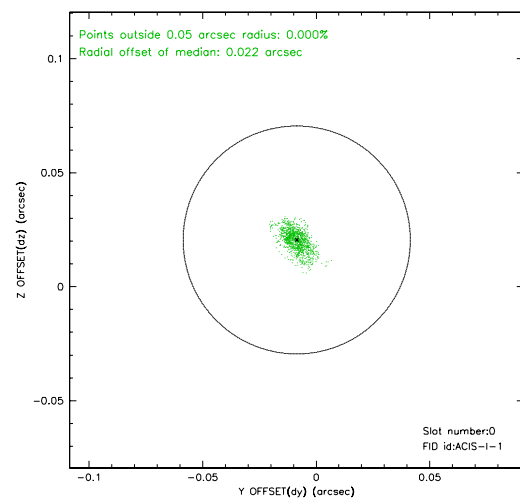
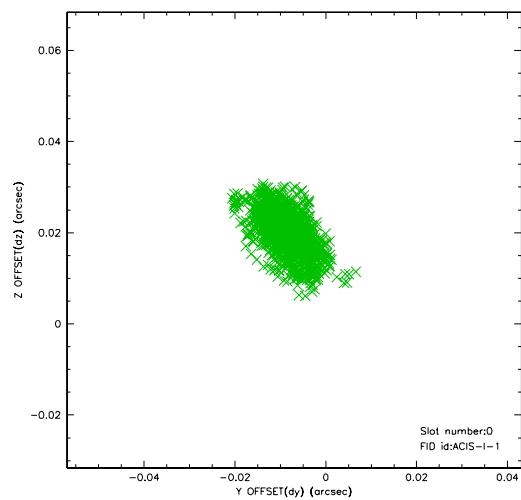


## 2.4.5 Slot 7

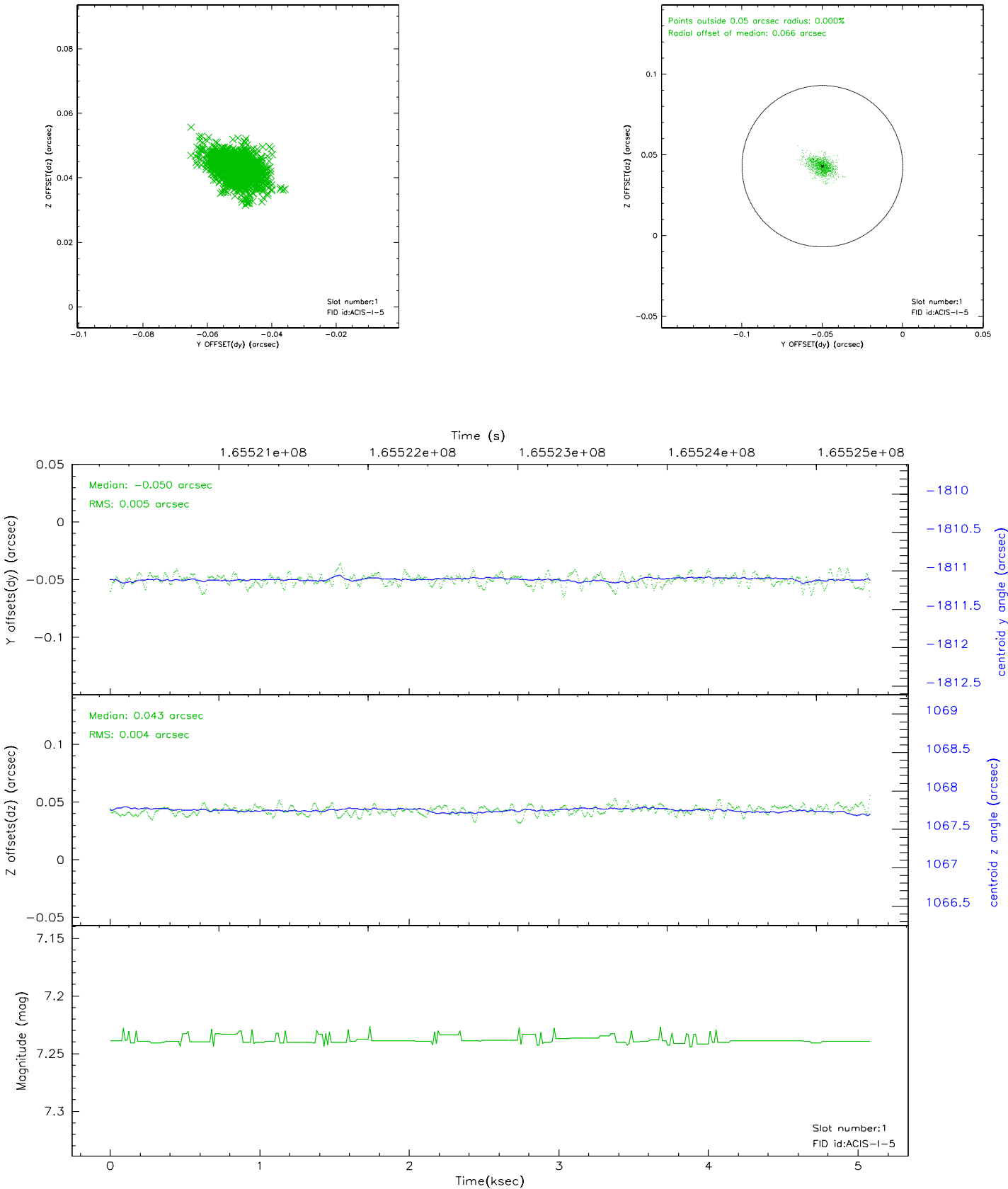


## 2.5 FID Slots

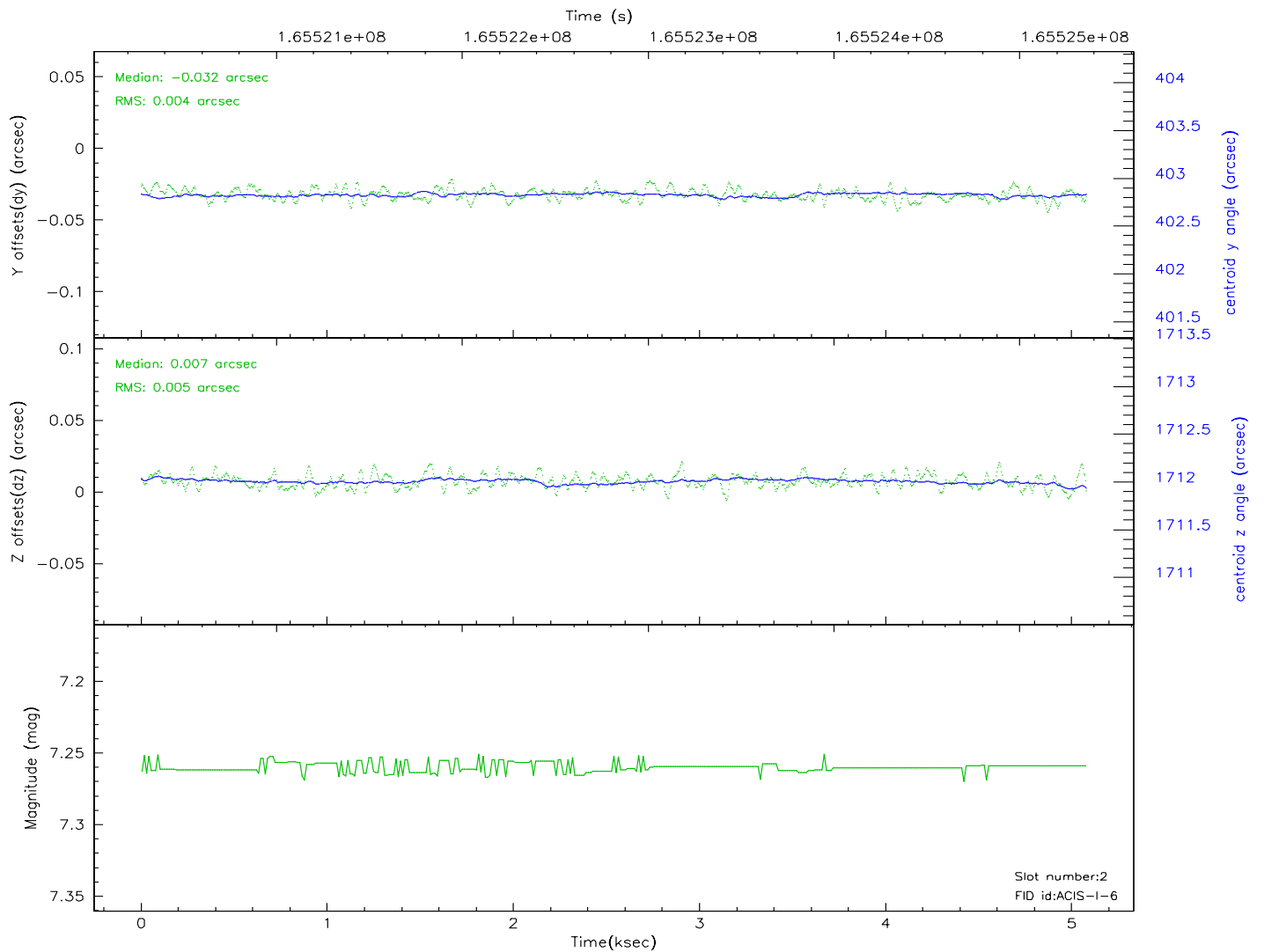
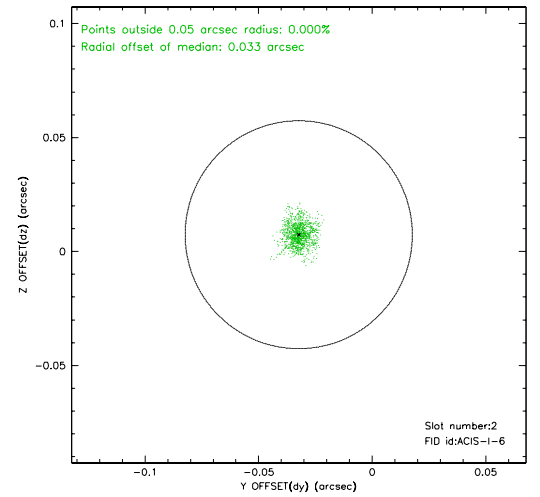
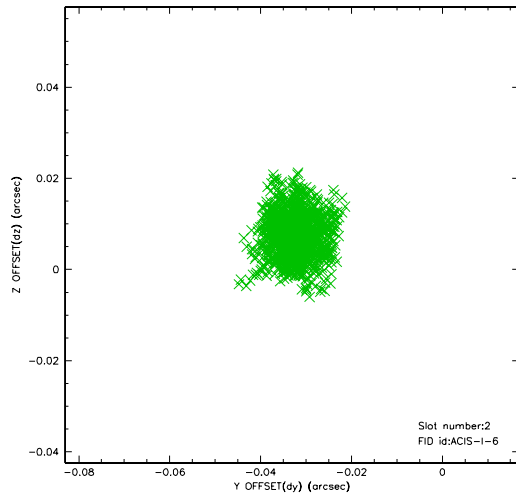
### 2.5.1 Slot 0



2.5.2 Slot 1



### 2.5.3 Slot 2





### 3 Point Sources

4.36 arcmin



4.12 arcmin



## A Summary

### A.1 Status

V&V Scientist	Jen Lauer
V&V Date (YYYY-MM-DD)	2006.07.30
V&V Edition	1
V&V Disposition and Status	OK
V&V Charge Time	4.675

### A.2 Comments