

V&V Reference Report

L2 ASCDS Version : 7.6.8

Observation 3646 - L2 Version 001
Chandra X-Ray Center

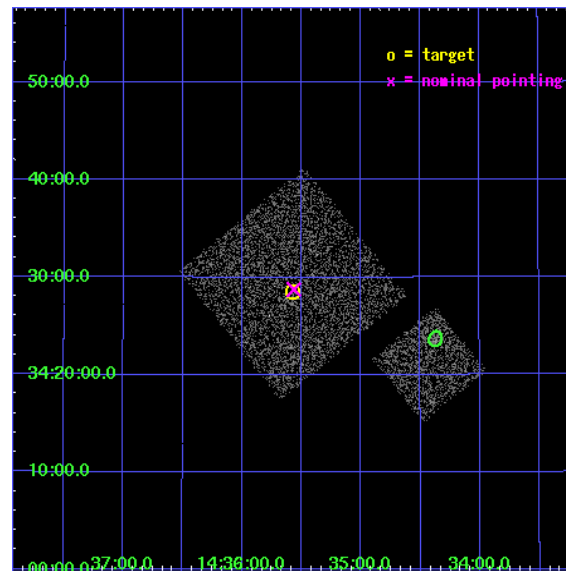
L2 Processing Date : Jul 30 2006

Contents

1	Front	2
2	OBI	3
2.1	OBI	3
2.1.1	Images	3
2.1.2	Bias	3
2.1.3	Parameters	4
2.1.4	Events	4
2.2	Compared Parameters	5
2.3	Aspect	6
2.4	Star Slots	9
2.4.1	Slot 3	9
2.4.2	Slot 4	10
2.4.3	Slot 5	11
2.4.4	Slot 6	12
2.4.5	Slot 7	13
2.5	FID Slots	14
2.5.1	Slot 0	14
2.5.2	Slot 1	15
2.5.3	Slot 2	16
3	Point Sources	17
A	Summary	18
A.1	Status	18
A.2	Comments	18

1 Front

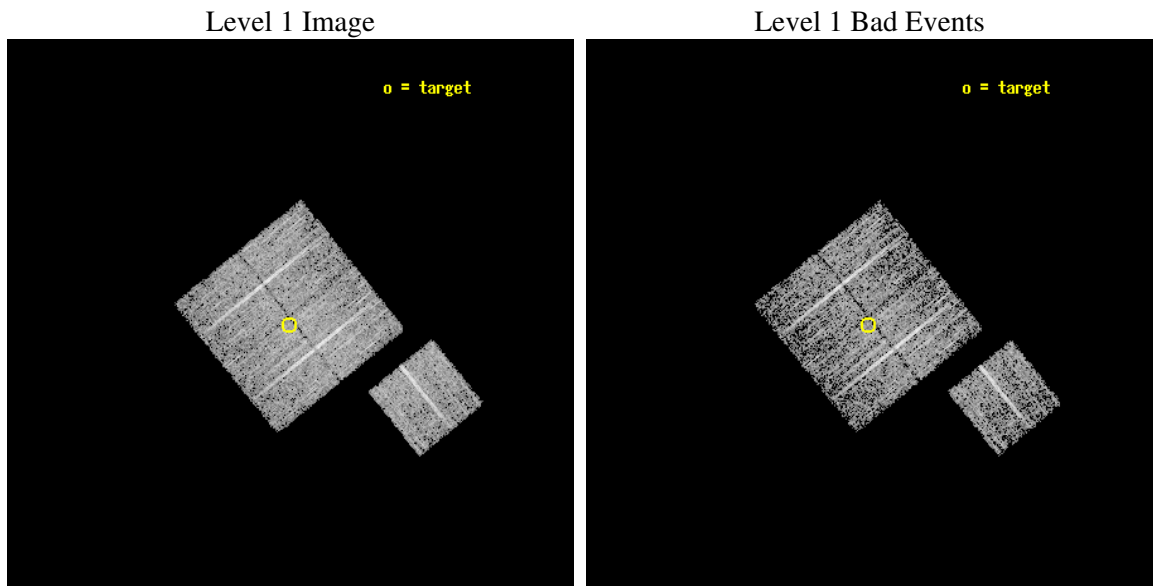
seq_num	900246
obs_id	3646
title	CHANDRA LARGE SCALE SURVEY OF THE NOAO BOOTES DEEP FIELD
observer	Dr. Stephen Murray
object	NOAO FIELD F42
dtcycle	0
cycle	P
ra_targ	218.893848
dec_targ	34.475388
ra_nom	218.89116924717
dec_nom	34.479397770293
roll_nom	141.01019548792
revision	2
ontime	4777.0999908149
livetime	4714.6836625851
ontime0	4777.0999908149
ontime1	4777.0999908149
ontime2	4777.0999908149
ontime3	4777.0999908149
ontime6	4777.0999908149
l2events	9727



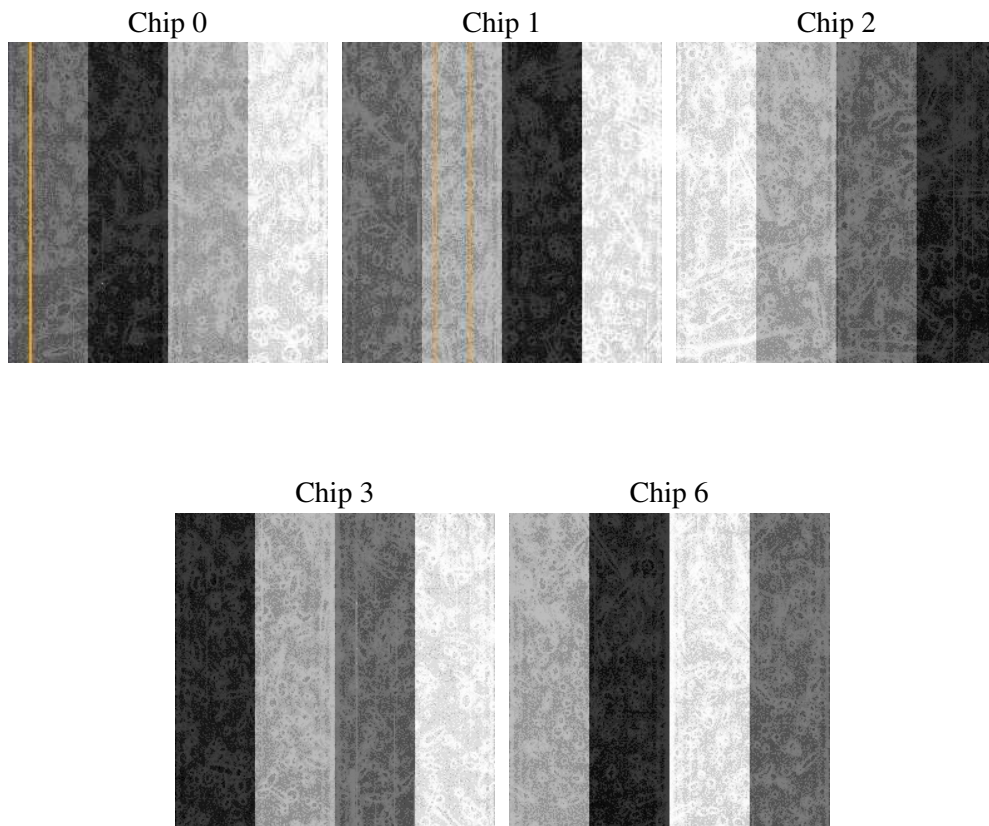
2 OBI

2.1 OBI

2.1.1 Images



2.1.2 Bias



2.1.3 Parameters

obi_num	1
ascdsver	7.6.8
caldbver	3.2.2
date	2006-07-30T02:28:55
revision	2

sched_exp_time	5000.000000
ontime	4780.6136716902
ontime0	4780.6136716902
ontime1	4780.6136716902
ontime2	4780.6136915982
ontime3	4780.6136716902
ontime6	4780.6136716902
l1events	118704

2.1.4 Events

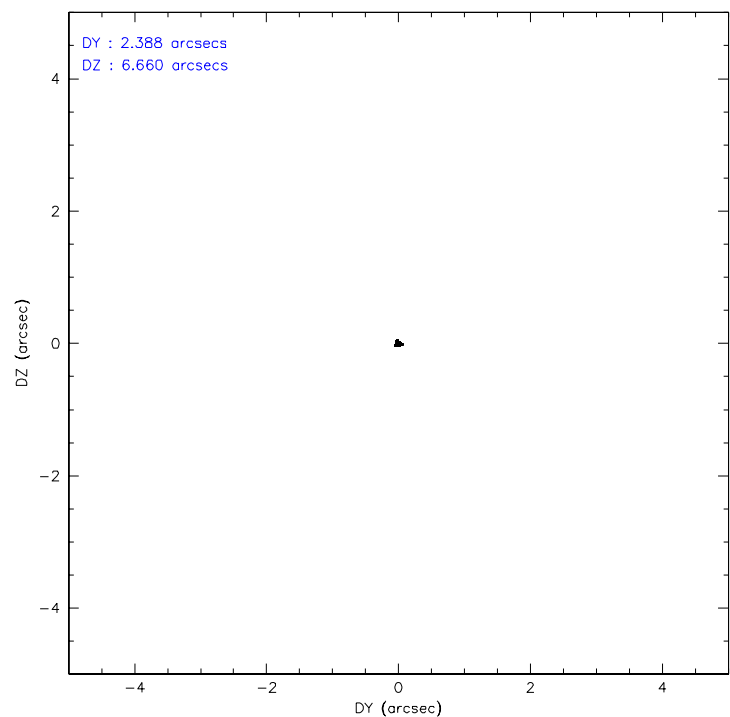
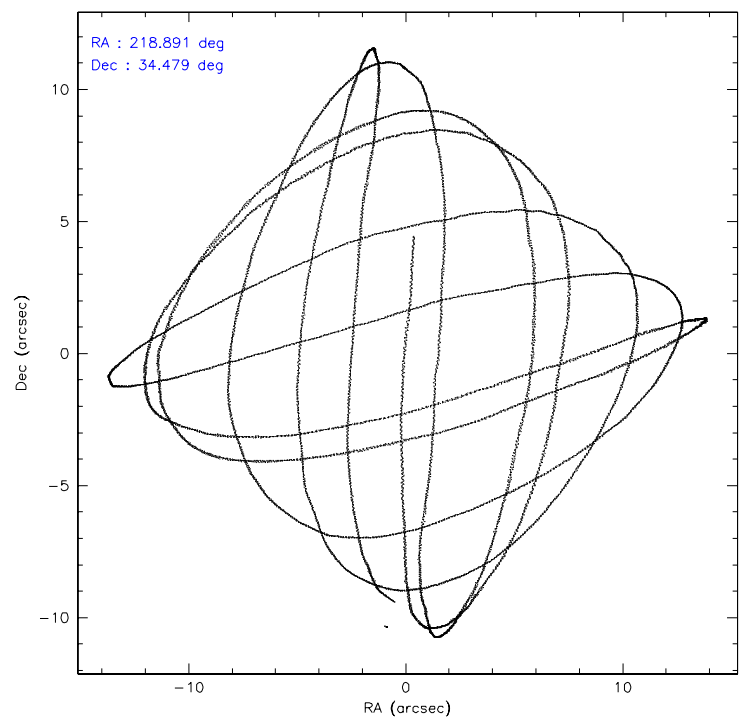
	ccd 0	ccd 1	ccd 2	ccd 3	ccd 6
level 1 events	23267	21900	26342	22907	24288
rejected events	20836	19538	24013	20650	21794
rejected %	89%	89%	91%	90%	89%

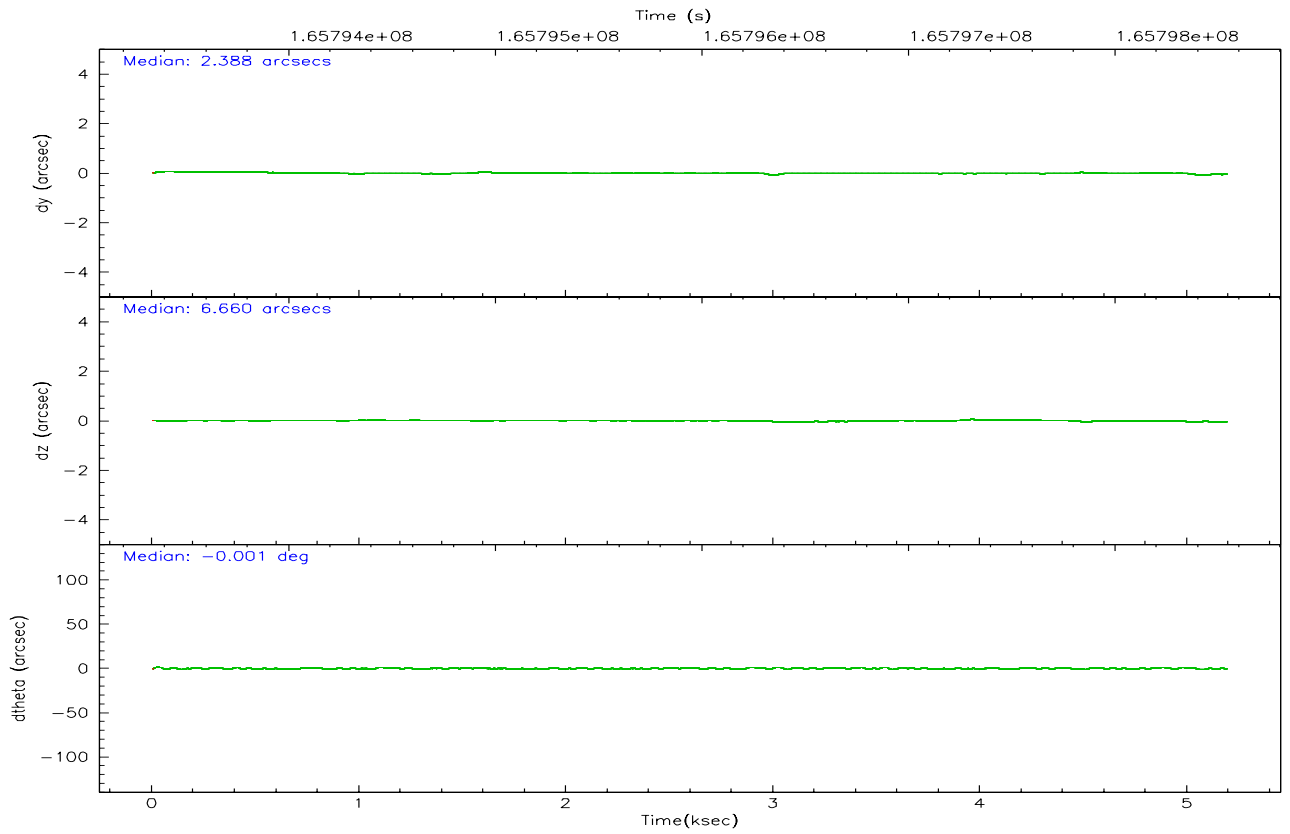
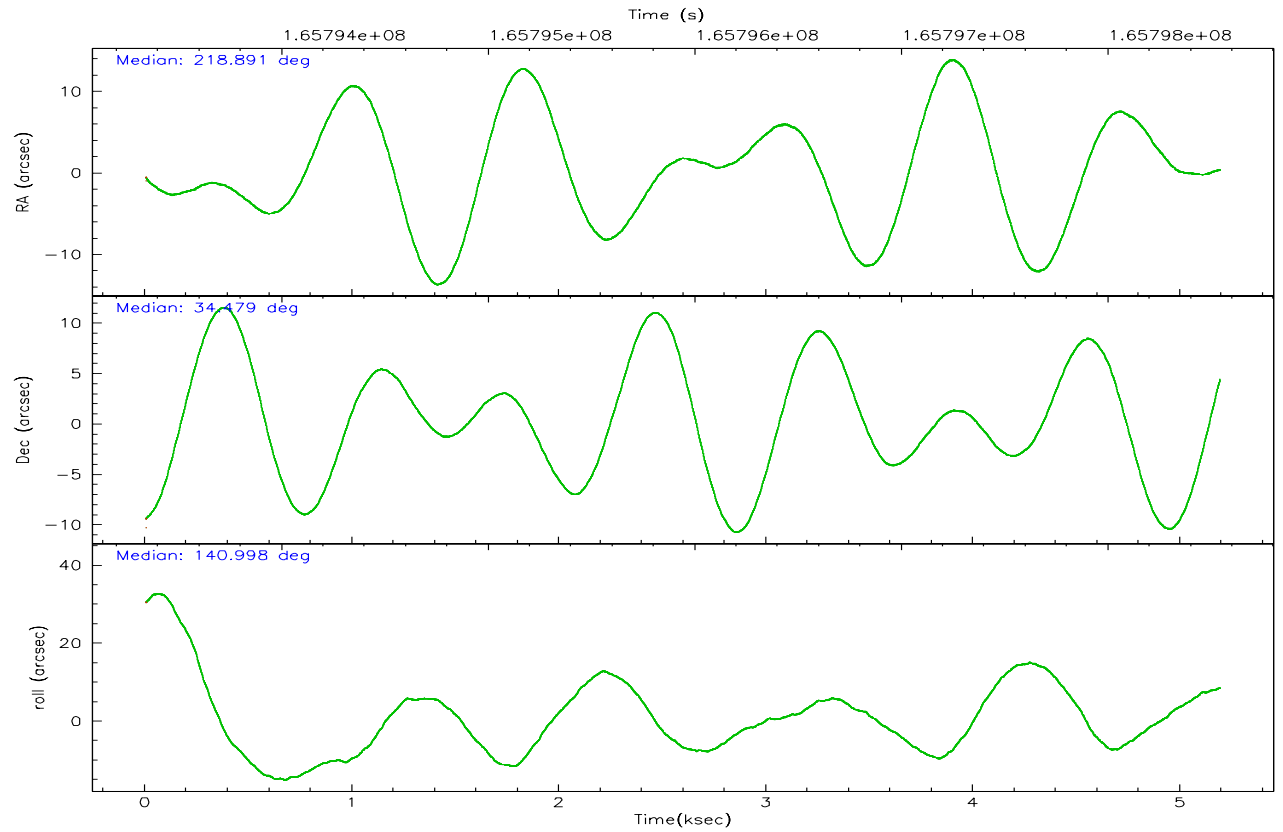
	ccd 0	ccd 1	ccd 2	ccd 3	ccd 6
grade 0 events	861	836	831	864	969
	3%	3%	3%	3%	3%
grade 1 events	12	10	17	9	14
	0%	0%	0%	0%	0%
grade 2 events	584	489	517	481	527
	2%	2%	1%	2%	2%
grade 3 events	316	276	262	245	263
	1%	1%	0%	1%	1%
grade 4 events	264	276	289	259	275
	1%	1%	1%	1%	1%
grade 5 events	661	772	640	756	793
	2%	3%	2%	3%	3%
grade 6 events	408	486	432	408	461
	1%	2%	1%	1%	1%
grade 7 events	20161	18755	23354	19885	20986
	86%	85%	88%	86%	86%

2.2 Compared Parameters

Parameter	Planned	Actual	Parameter	Planned	Actual
Instrument	ACIS	ACIS	Obspar format version number	6	6
Detector	ACIS-01236	ACIS-01236	Obspar file type	PREDICTED	ACTUAL
Grating	NONE	NONE	Obspar update status	NONE	UPDATED
Data mode	VFAINT	VFAINT	On-chip summing requested	N	N
Observation mode	POINTING	POINTING	Subarray requested	NONE	NONE
Pointing RA	218.924031	218.8911692471663	Alternating exposures requested	N	N
Pointing Dec	34.475306	34.47939777029278	Primary exposure time	0.000000	3.1
Pointing Roll	140.782919	141.0101954879192			
SIM focus pos (mm)	-0.782348	-0.7809083437167272			
SIM defocus (mm)	0	0.001439871863259334			
SIM translation stage pos (mm)	-233.592463	-233.5874344608287			
SIM translation stage offset (mm)	0	-0.005018542100998502			
Observation start time	165793540.184000	165793164.20442			
Observation start date	2003-04-03T21:44:36	2003-04-03T21:39:24			
Observation end time	165798540.184000	165798674.09215			
Observation end date	2003-04-03T23:07:56	2003-04-03T23:11:14			
Read mode	TIMED	TIMED			

2.3 Aspect



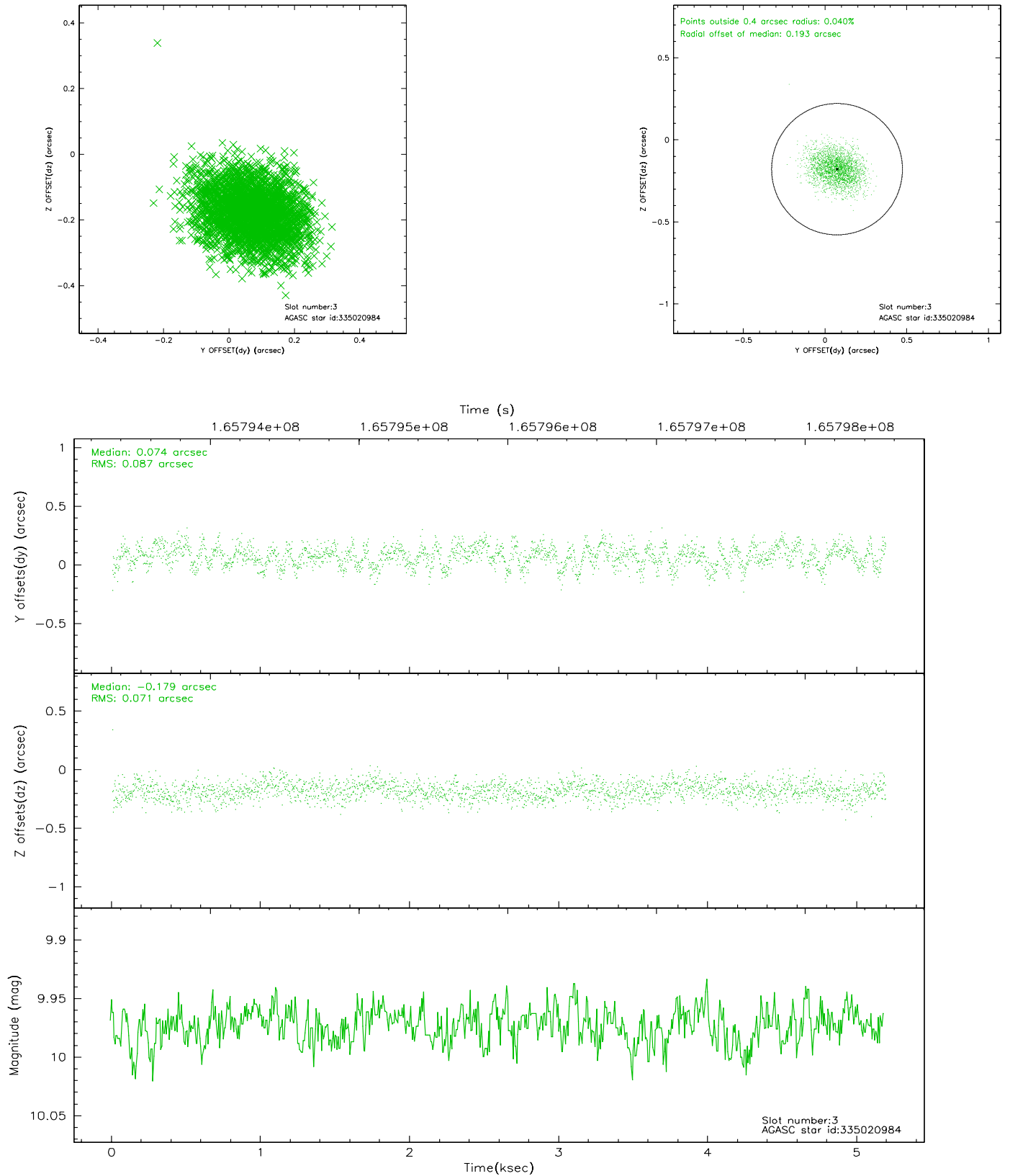


Slot Statistics

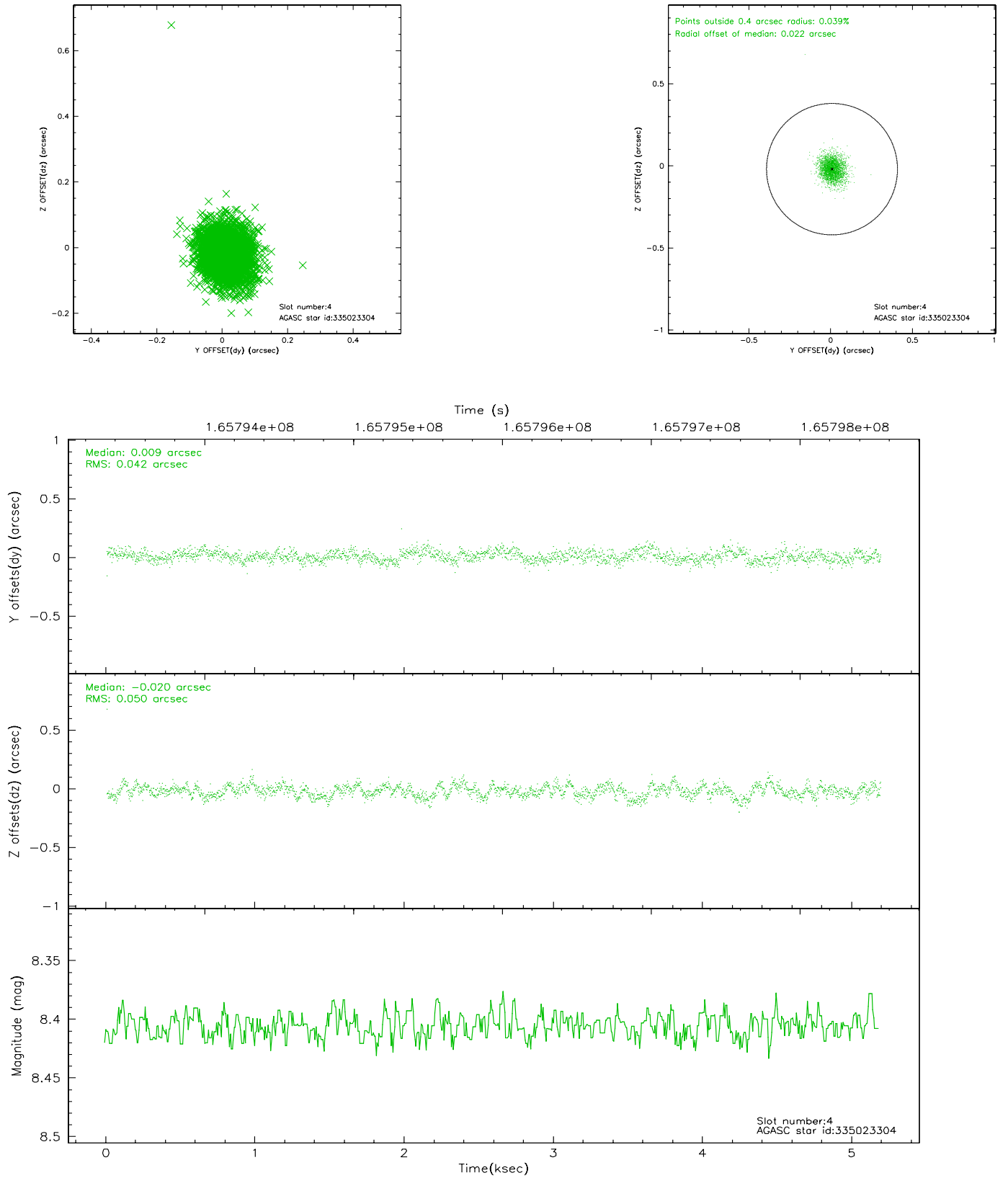
slot	status	id	mag	n_pts	med_dy	med_dz	dr1	dr2	ra	dec	mean_y	mean_z
0	FID	ACIS-I-1	7.25	1266	-0.007	0.022	0.006	0.010	0.000000	0.000000	937.40	-830.04
1	FID	ACIS-I-5	7.24	1265	-0.051	0.045	0.006	0.010	0.000000	0.000000	-1810.06	1066.95
2	FID	ACIS-I-6	7.26	1265	-0.033	0.004	0.007	0.010	0.000000	0.000000	401.70	1712.69
3	GUIDE	335020984	9.97	2530	0.074	-0.179	0.121	0.190	218.841668	33.815112	-1311.19	1996.50
4	GUIDE	335023304	8.41	2532	0.009	-0.020	0.067	0.111	218.883608	34.686545	573.61	-512.65
5	GUIDE	335025040	9.91	2524	0.034	0.040	0.112	0.186	218.601670	34.305240	357.10	1079.18
6	GUIDE	335152968	9.77	2531	0.036	0.052	0.132	0.209	219.446087	34.867883	-297.65	-2072.50
7	GUIDE	335414336	8.97	2529	-0.155	0.114	0.067	0.106	218.979022	35.090910	1276.34	-1819.91

2.4 Star Slots

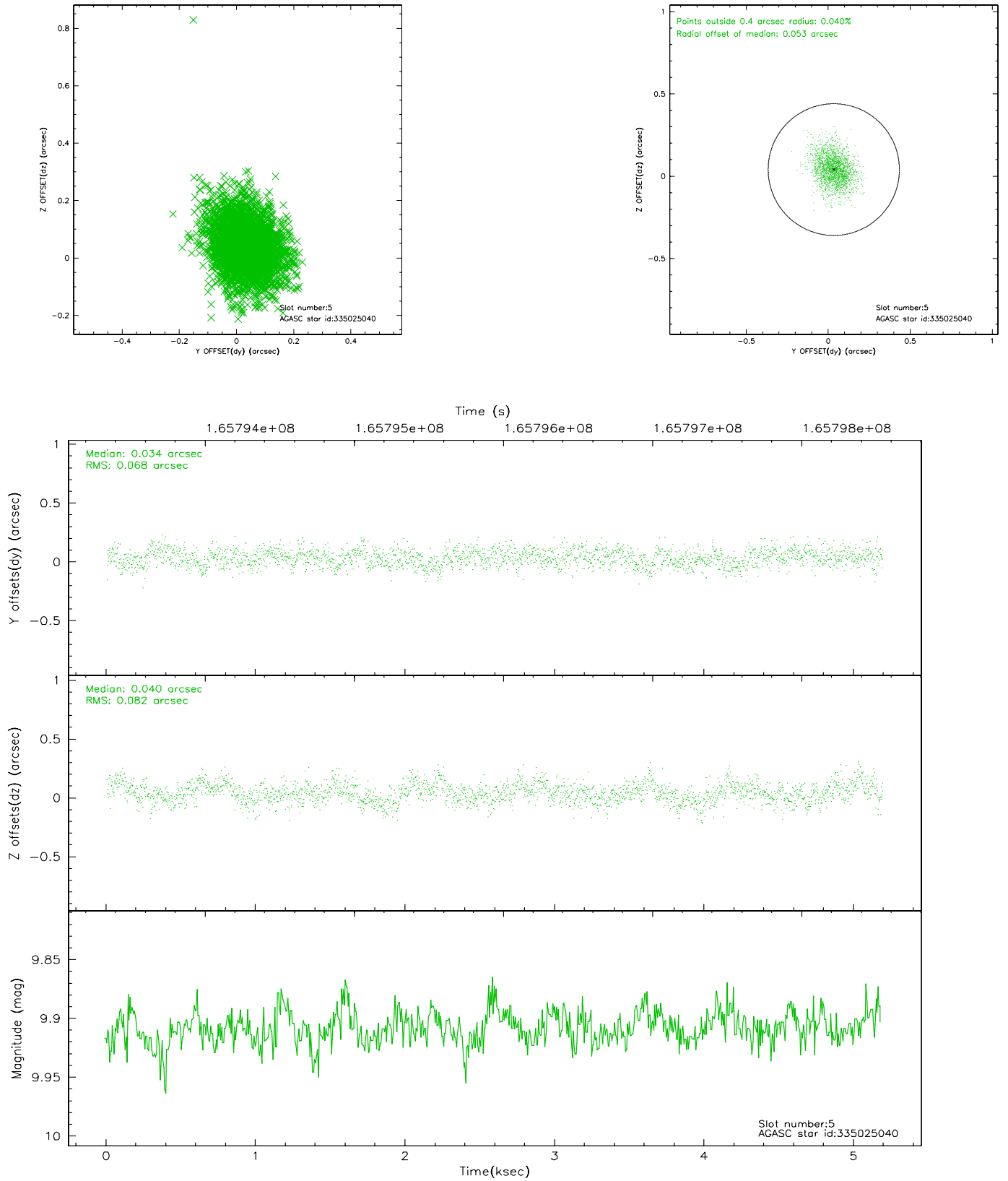
2.4.1 Slot 3



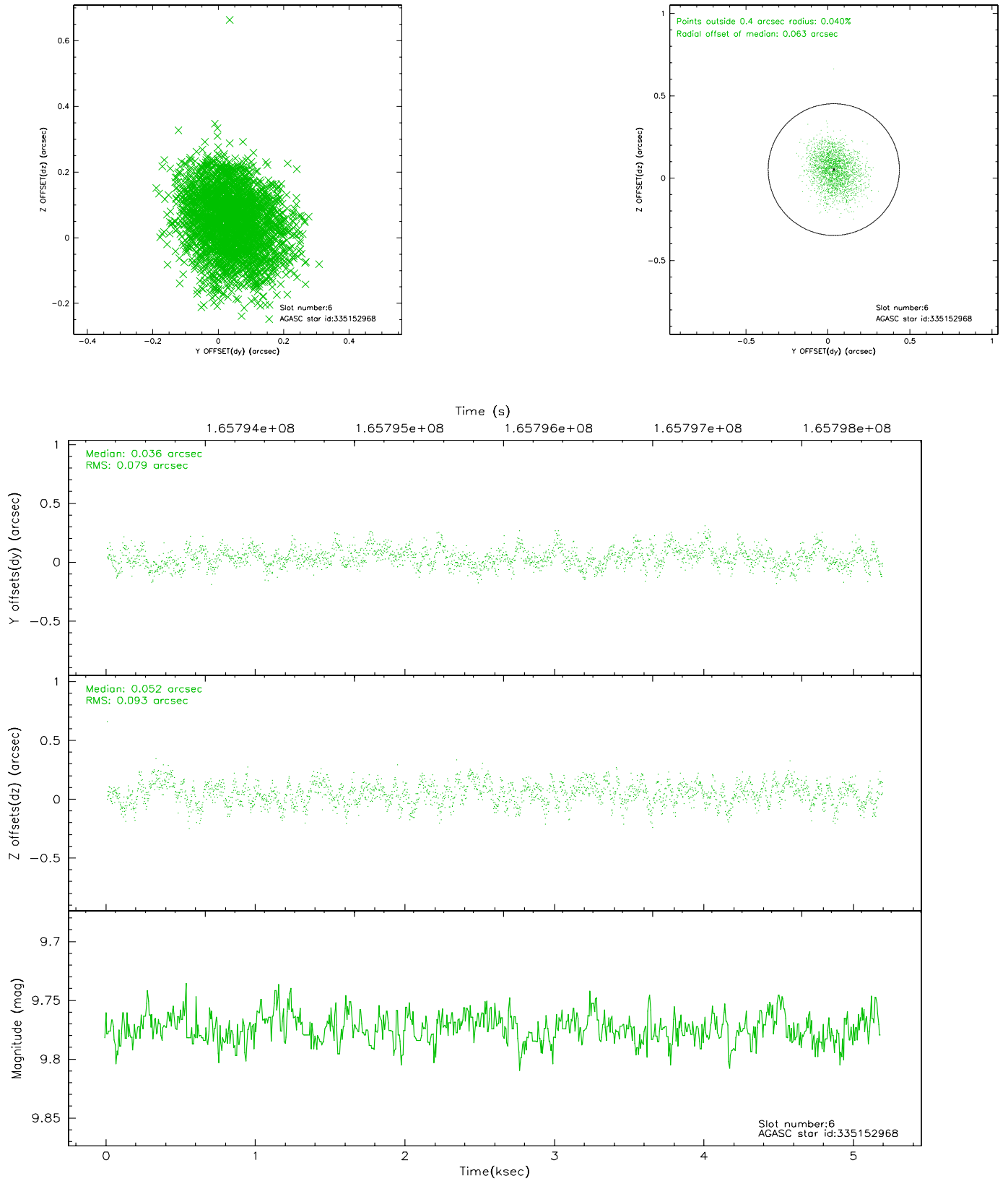
2.4.2 Slot 4



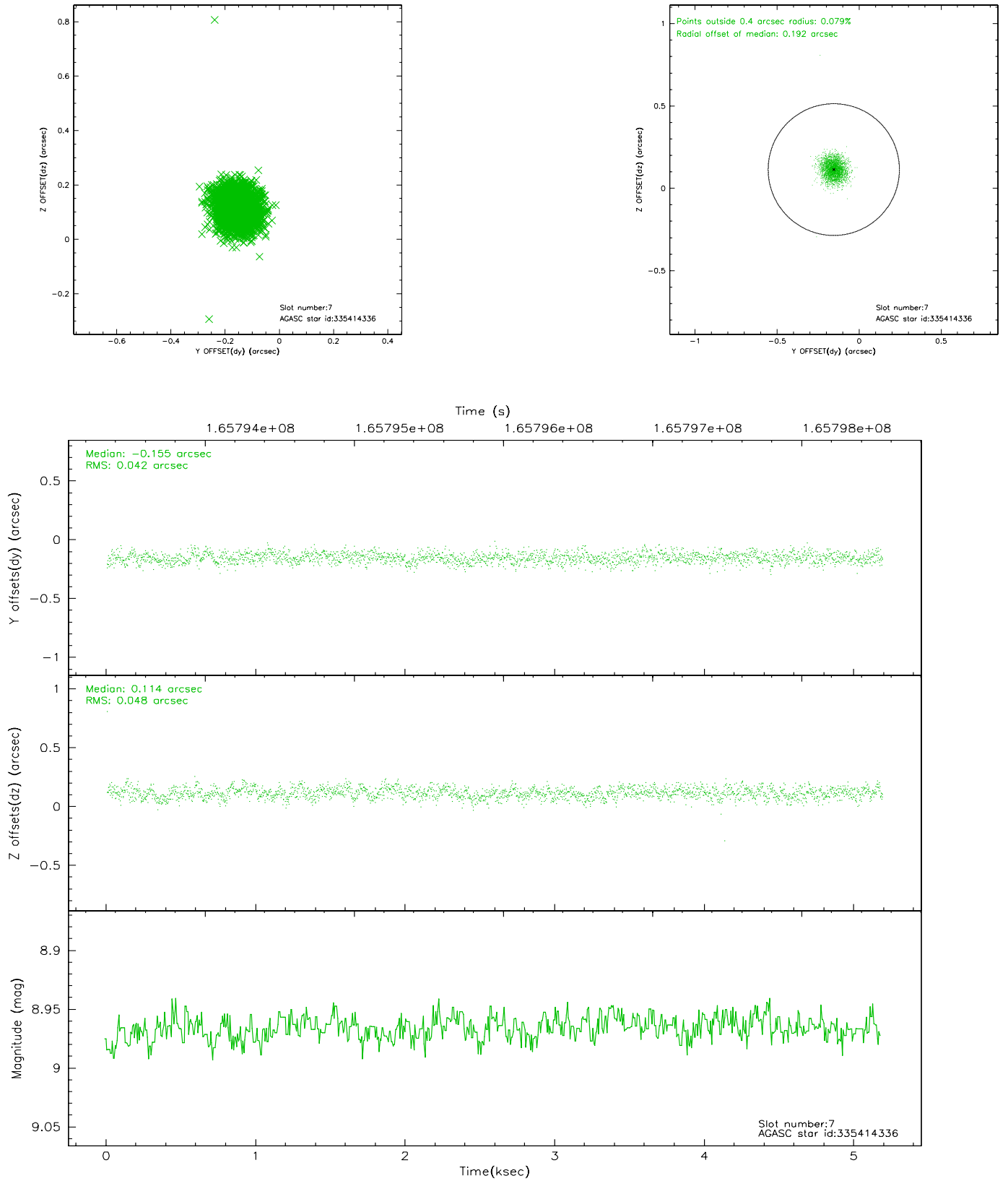
2.4.3 Slot 5



2.4.4 Slot 6

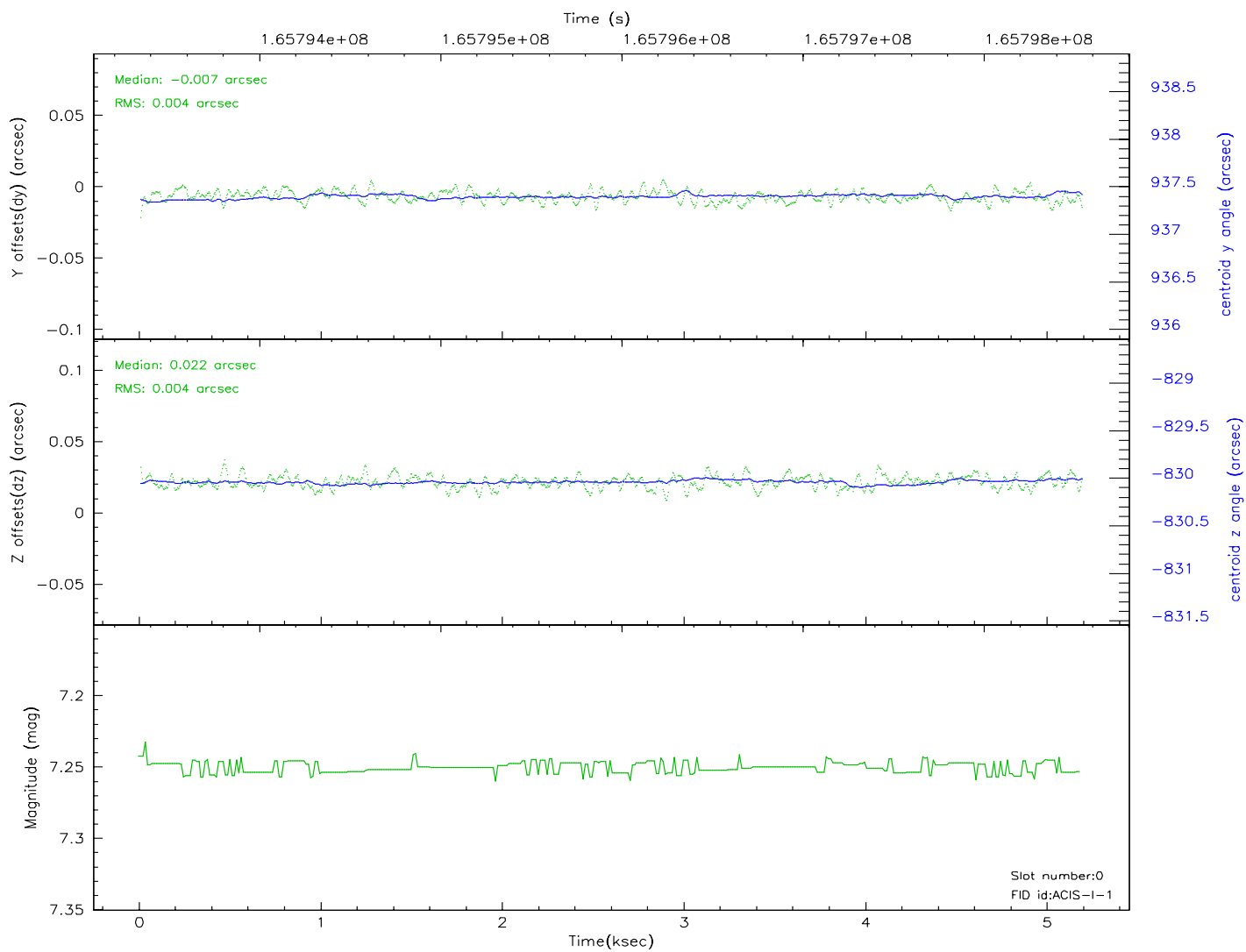
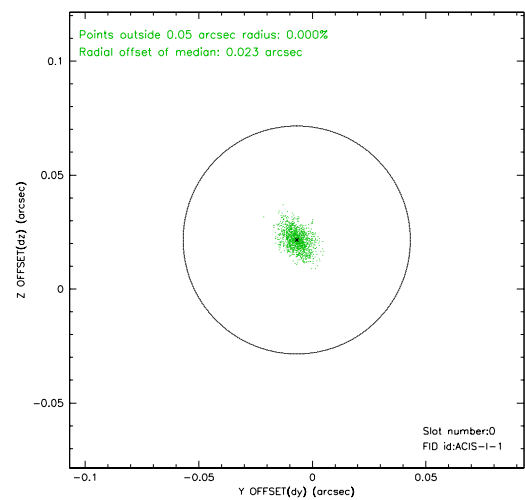
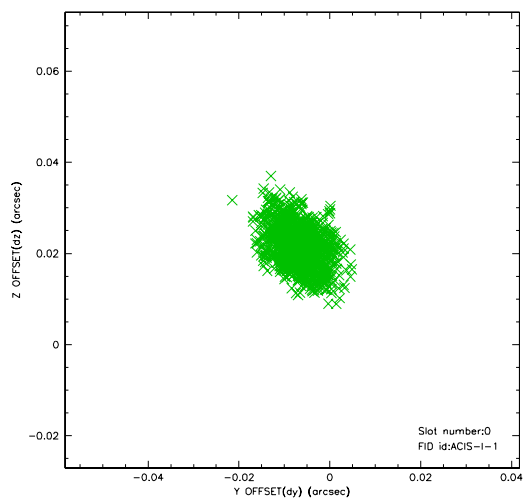


2.4.5 Slot 7

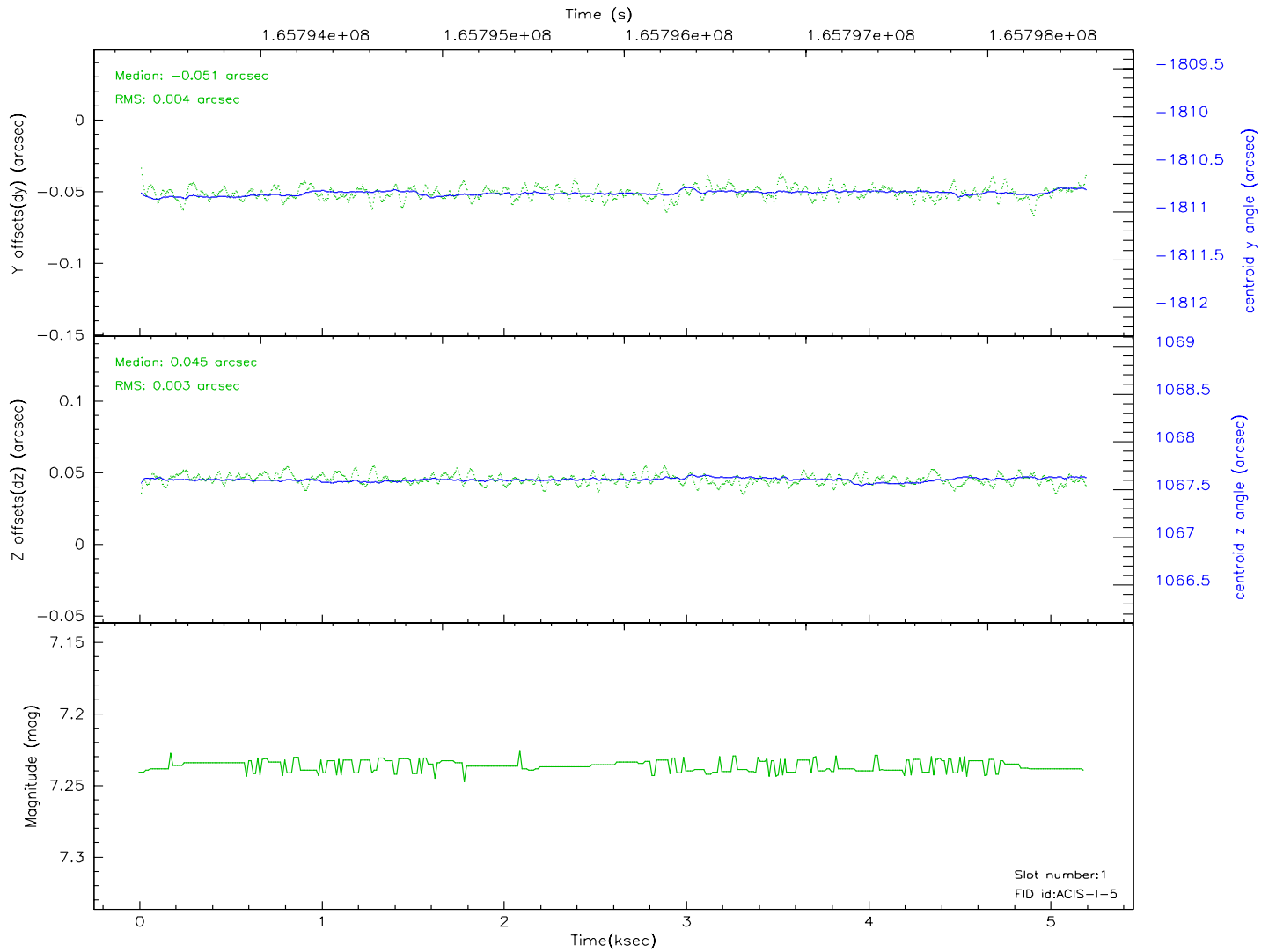
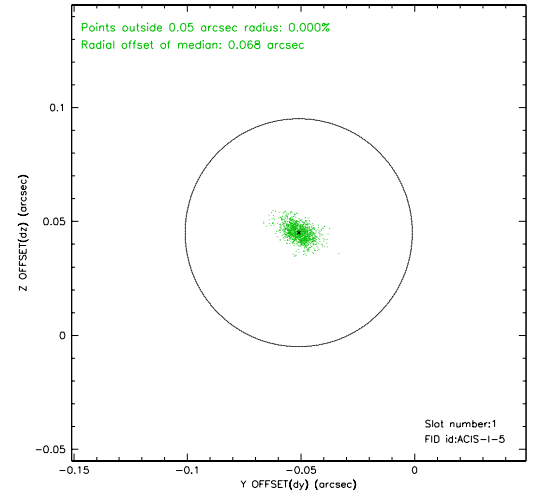
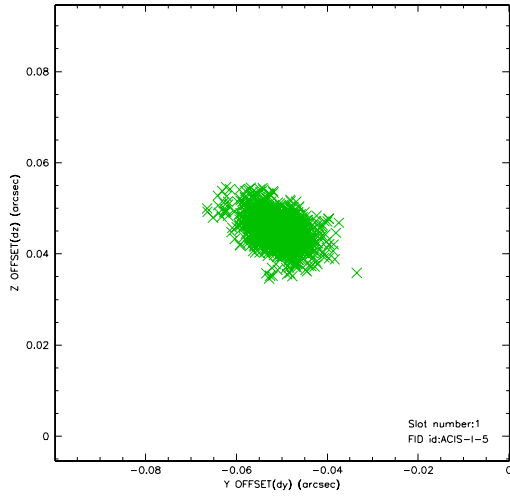


2.5 FID Slots

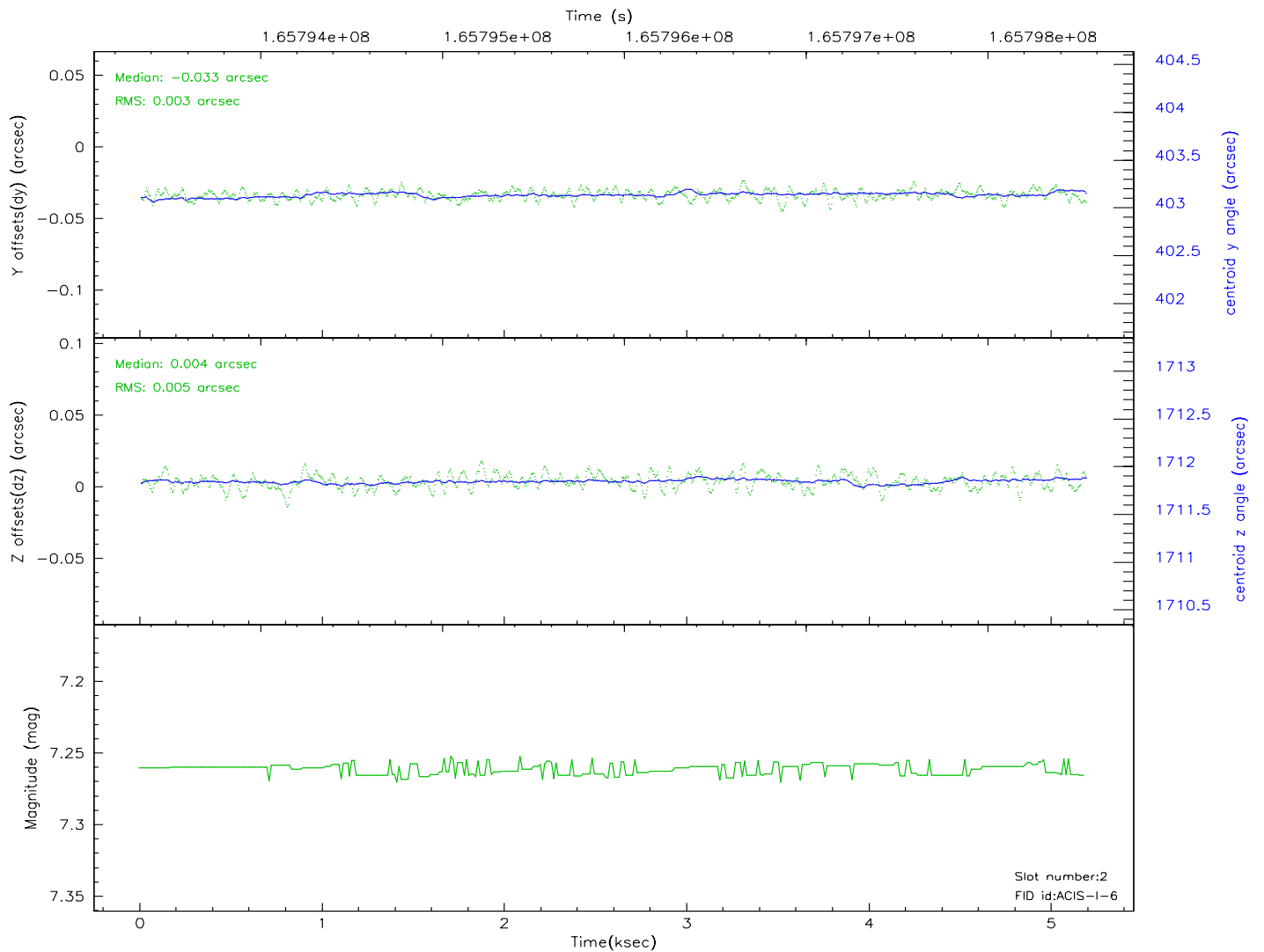
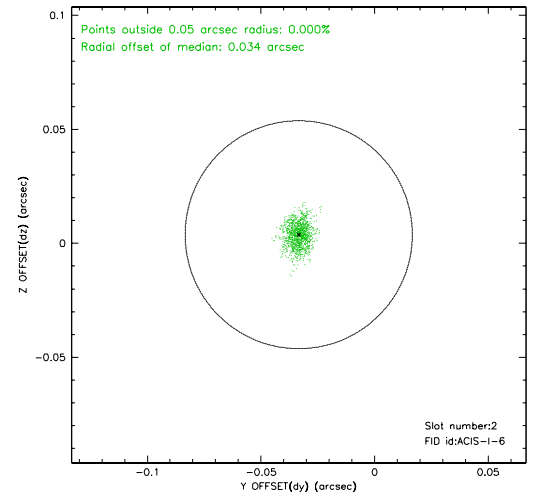
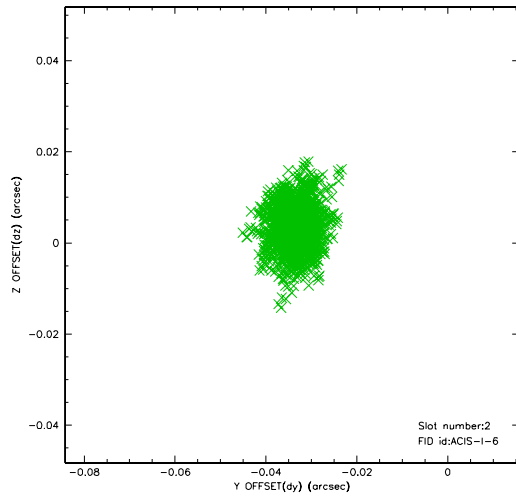
2.5.1 Slot 0



2.5.2 Slot 1



2.5.3 Slot 2



3 Point Sources

3.72 arcmin



A Summary

A.1 Status

V&V Scientist	Jen Lauer
V&V Date (YYYY-MM-DD)	2006.07.30
V&V Edition	1
V&V Disposition and Status	OK
V&V Charge Time	4.777

A.2 Comments