

V&V Reference Report

L2 ASCDS Version : 8.4.5

Observation 3526 - L2 Version 5
Chandra X-Ray Center

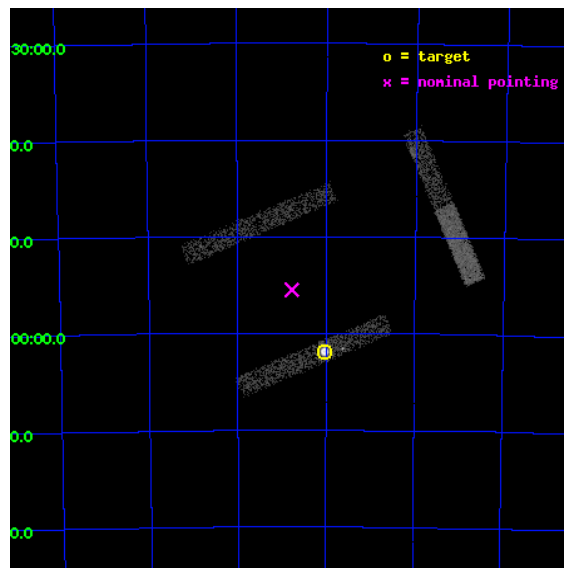
L2 Processing Date : Jan 17 2013

Contents

1	Front	2
2	OBI	3
2.1	OBI	3
2.1.1	Images	3
2.1.2	Bias	3
2.1.3	Parameters	4
2.1.4	Events	4
2.2	Compared Parameters	5
2.3	Aspect	6
2.4	Star Slots	9
2.4.1	Slot 3	9
2.4.2	Slot 4	10
2.4.3	Slot 5	11
2.4.4	Slot 6	12
2.4.5	Slot 7	13
2.5	FID Slots	14
2.5.1	Slot 0	14
2.5.2	Slot 1	15
A	Summary	16
A.1	Status	16
A.2	Comments	16

1 Front

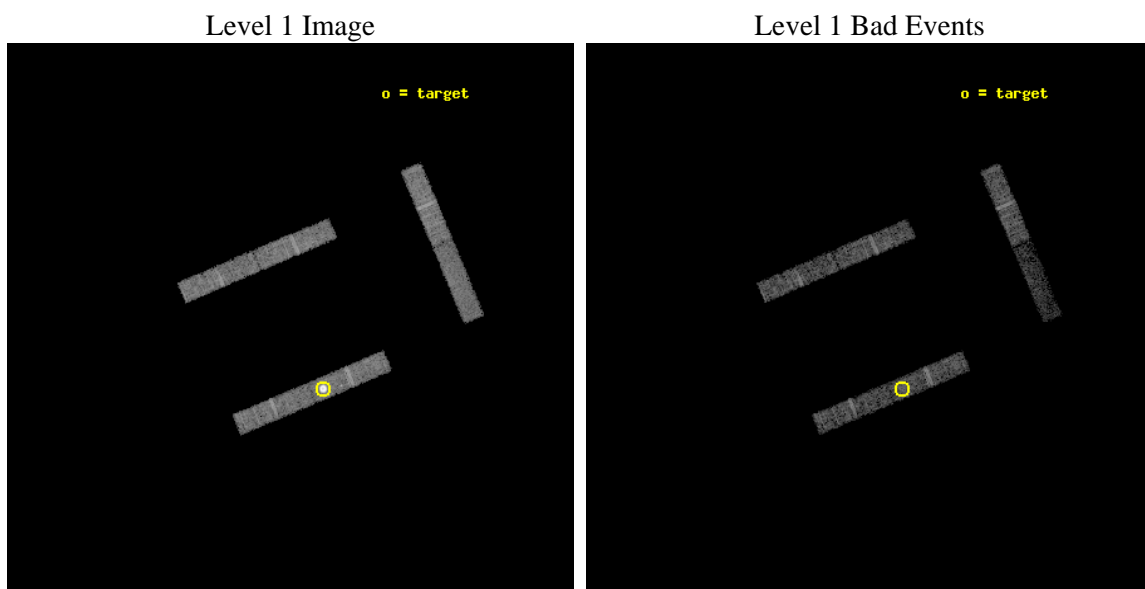
seq_num	590281	Sequence number
obs_id	3526	Observation id
title	AO4B ACIS-I CALIBRATION OBSERVATIONS OF E0102-72	Proposal title
observer	Dr. CXC Calibration	Principal investigator
object	E0102-72[I3,-120,-7.0,0.5,0]	Source name
dtcycle	0	
cycle	P	events from which exps? Prim/Second/Both
ra_targ	16.01	Observer's specified target RA [deg]
dec_targ	-72.032028	Observer's specified target Dec [deg]
ra_nom	16.193522415778	Nominal RA [deg]
dec_nom	-71.924715995422	Nominal Dec [deg]
roll_nom	67.168407595308	Nominal Roll [deg]
revision	5	Processing version of data
ontime	8181.0	Sum of GTIs [s]
livetime	7858.48766618	Livetime [s]
ontime0	8181.0	Sum of GTIs [s]
ontime1	8181.0	Sum of GTIs [s]
ontime2	8181.0	Sum of GTIs [s]
ontime3	8181.0	Sum of GTIs [s]
ontime6	8181.0	Sum of GTIs [s]
ontime7	8181.0	Sum of GTIs [s]
l2events	31441	Number of level 2 events



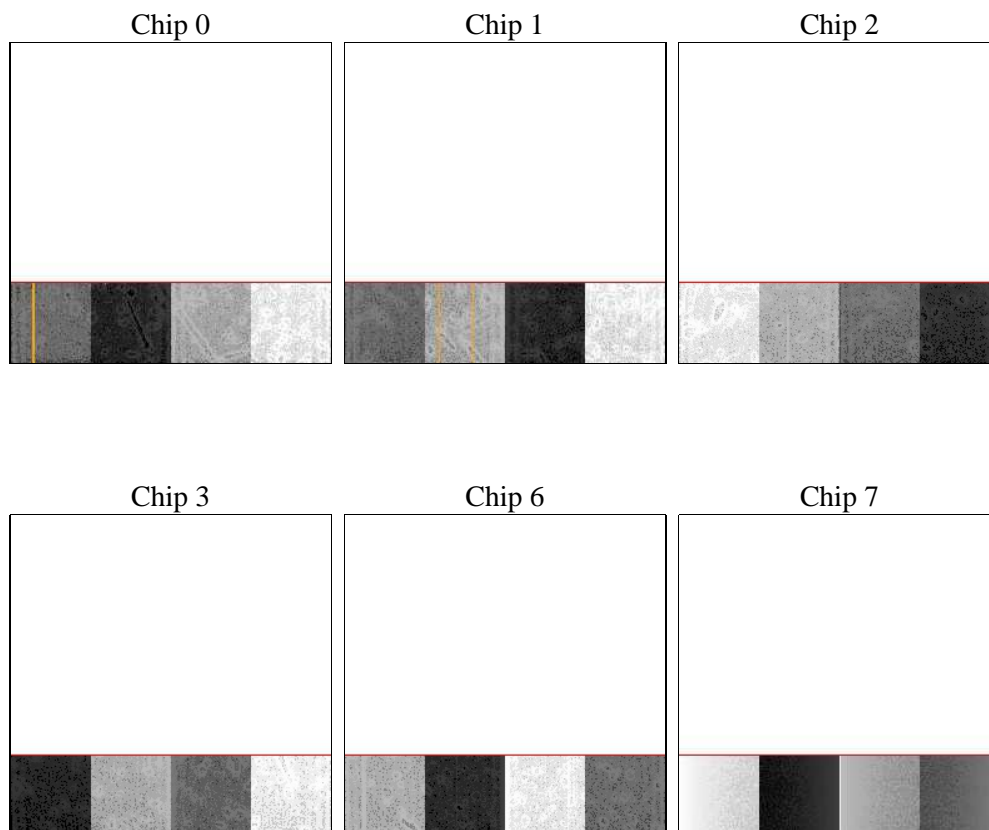
2 OBI

2.1 OBI

2.1.1 Images



2.1.2 Bias



2.1.3 Parameters

obi_num	0	Obi number	sched_exp_time	8000.000000	[s] Scheduled observation exposure time
ascdsver	8.5.1.1	Processing system revision	ontime	8181.0	Sum of GTIs [s]
caldsver	4.5.5	 	ontime0	8181.0	Sum of GTIs [s]
date	2013-01-17T22:29:25	Date and time of file creation	ontime1	8181.0	Sum of GTIs [s]
revision	5	Processing version of data	ontime2	8181.0	Sum of GTIs [s]
			ontime3	8181.0	Sum of GTIs [s]
			ontime6	8181.0	Sum of GTIs [s]
			ontime7	8181.0	Sum of GTIs [s]
			l1events	99780	Number of level 1 events

2.1.4 Events

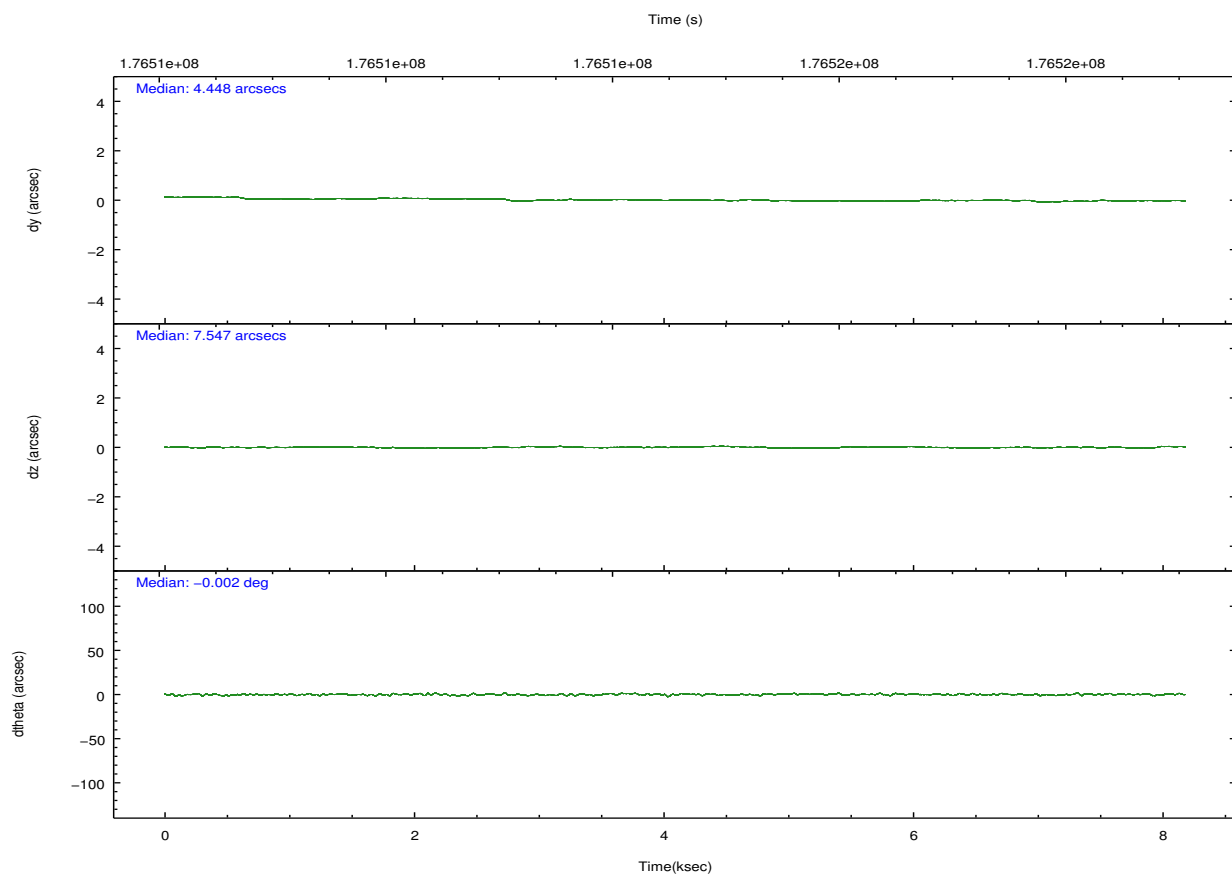
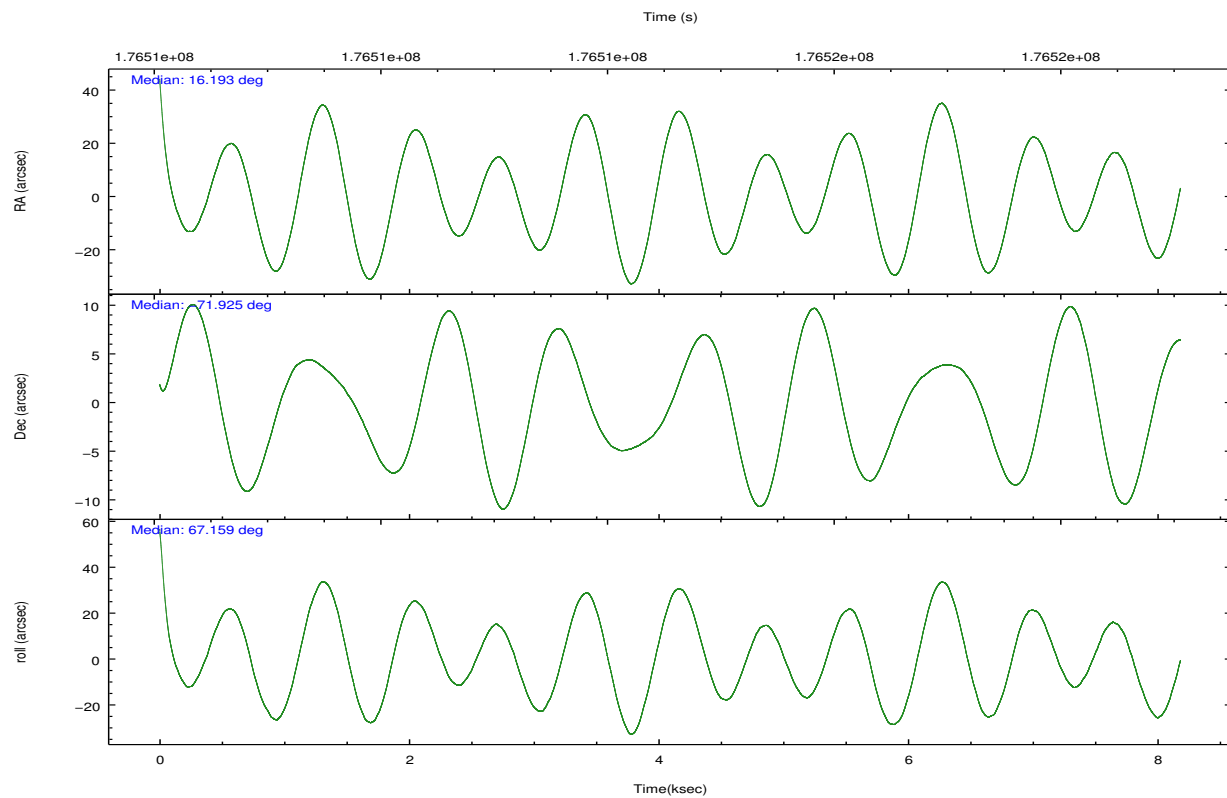
	ccd 0	ccd 1	ccd 2	ccd 3	ccd 6	ccd 7
level 1 events	12941	12329	13980	35920	15064	9546
rejected events	11667	10922	12758	12495	13630	4925
rejected %	90%	88%	91%	34%	90%	51%

	ccd 0	ccd 1	ccd 2	ccd 3	ccd 6	ccd 7
grade 0 events	392	490	368	20233	466	483
	3%	3%	2%	56%	3%	5%
grade 1 events	6	2	6	56	3	9
	0%	0%	0%	0%	0%	0%
grade 2 events	221	246	264	1992	269	987
	1%	1%	1%	5%	1%	10%
grade 3 events	264	264	228	628	244	594
	2%	2%	1%	1%	1%	6%
grade 4 events	225	250	238	619	257	562
	1%	2%	1%	1%	1%	5%
grade 5 events	291	304	237	326	341	1001
	2%	2%	1%	0%	2%	10%
grade 6 events	237	250	196	354	251	2206
	1%	2%	1%	0%	1%	23%
grade 7 events	11305	10523	12443	11712	13233	3704
	87%	85%	89%	32%	87%	38%

2.2 Compared Parameters

Parameter	Planned	Actual	Parameter	Planned	Actual
Instrument	ACIS	ACIS	Obspar format version number	7	7
Detector	ACIS-012367	ACIS-012367	Obspar file type	PREDICTED	ACTUAL
Grating	NONE	NONE	Obspar update status	NONE	UPDATED
Data mode	VFAINT	VFAINT	Number of optional ACIS chips dropped	0	0
Observation mode	POINTING	POINTING	On-chip summing requested	N	N
[deg] Pointing RA	16.205043	16.19352241577832	Subarray requested	CUSTOM	1/4
[deg] Pointing Dec	-71.951930	-71.92471599542156	Subarray start row	1	1
[deg] Pointing Roll	66.970642	67.16840759530795	Subarray row count	256	256
[s] Window start time (MET)	174614464.184000	174614464.184000	Alternating exposures requested	N	N
[s] Window stop time (MET)	177292864.184000	177292864.184000	[s] Primary exposure time	0.000000	1
[mm] SIM focus pos	-0.782348	-0.7809083437167272			
[mm] SIM defocus	0	0.001439871863259334			
[mm] SIM translation stage pos	-233.592463	-233.5874344608287			
[mm] SIM translation stage offset	0	-0.005018542100998502			
[s] Observation start time (MET)	176510643.184000	176509678.03419			
Observation start date	2003-08-05T22:42:59	2003-08-05T22:27:58			
[s] Observation end time (MET)	176518643.184000	176518777.47208			
Observation end date	2003-08-06T00:56:19	2003-08-06T00:59:37			
Read mode	TIMED	TIMED			

2.3 Aspect

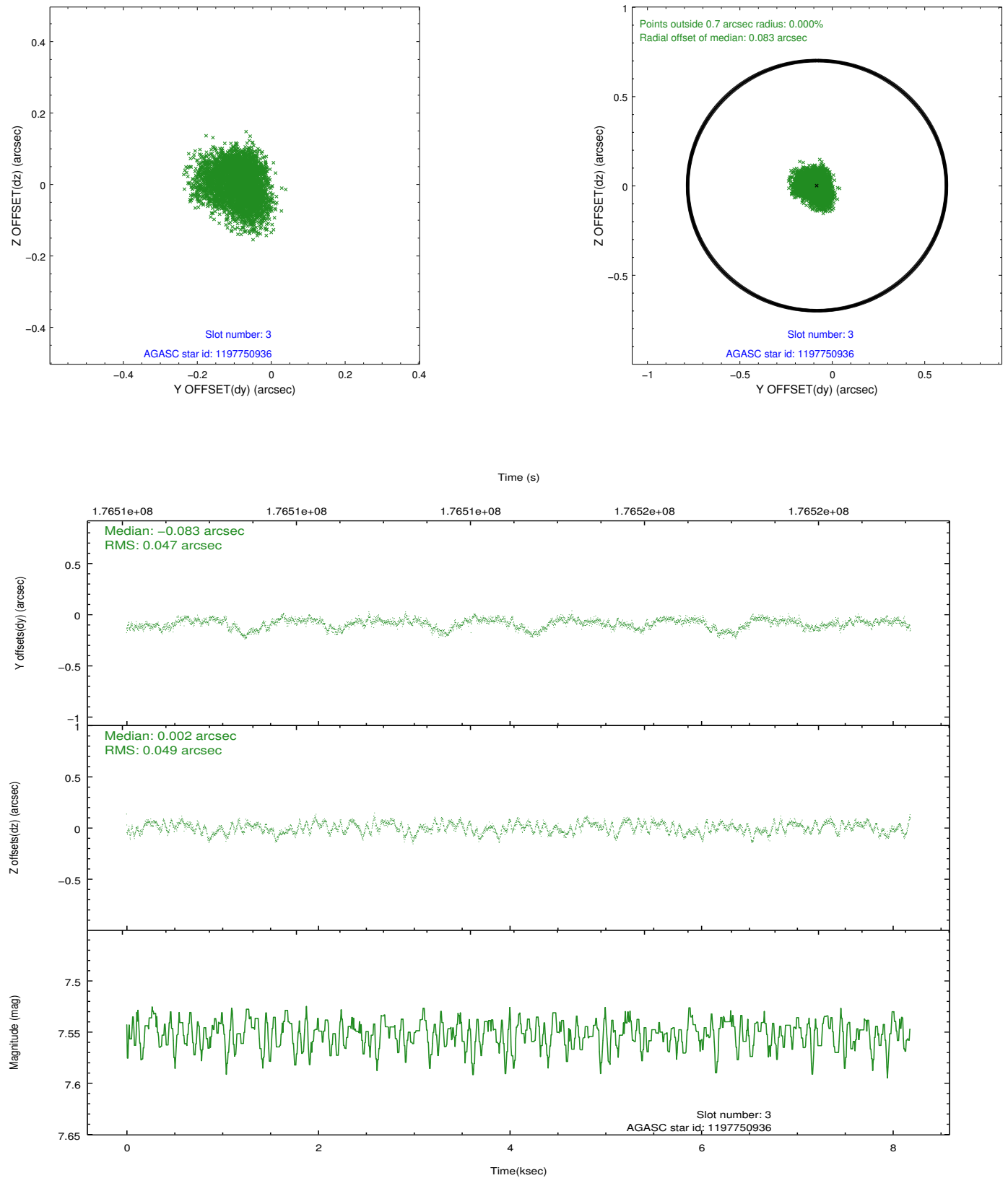


Slot Statistics

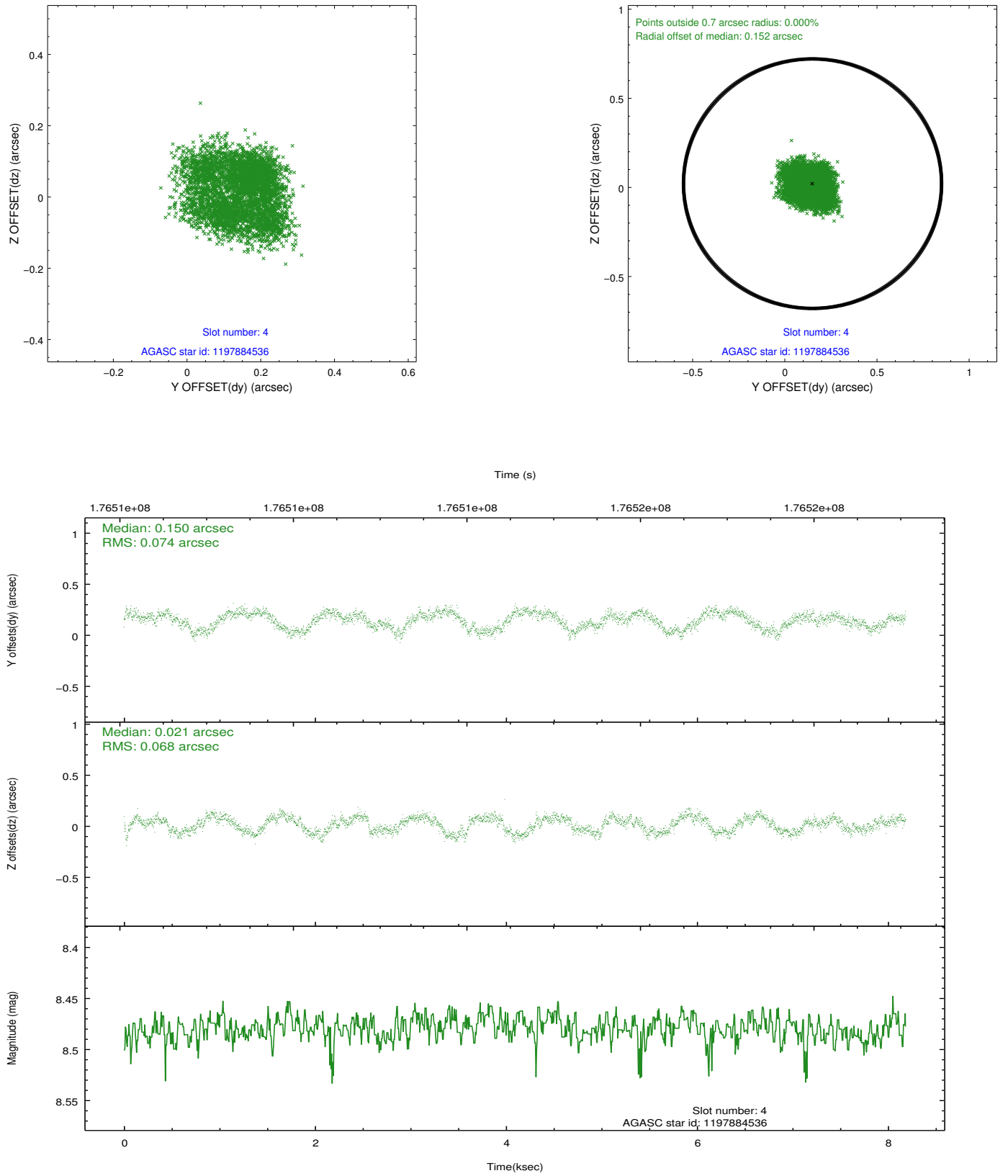
slot	status	id	mag	n_pts	med_dy	med_dz	dr1	dr2	ra	dec	mean_y	mean_z
0	FID	ACIS-I-4	7.17	1995	0.107	0.021	0.005	0.010	0.000000	0.000000	2155.36	1068.95
1	FID	ACIS-I-5	7.22	1996	-0.176	0.026	0.005	0.010	0.000000	0.000000	-1812.00	1067.18
2	OMITTED		0.00	0	0.000	0.000	0.000	0.000	0.000000	0.000000	0.00	0.00
3	GUIDE	1197750936	7.55	3992	-0.083	0.002	0.074	0.116	15.387940	-71.549550	962.83	1420.92
4	GUIDE	1197884536	8.48	3991	0.150	0.021	0.110	0.162	17.160729	-71.835289	798.83	-825.71
5	GUIDE	1197884712	8.30	3993	0.003	0.085	0.061	0.097	16.087398	-72.252690	-1046.70	-305.23
6	GUIDE	1197885104	9.36	3990	-0.019	0.075	0.083	0.138	17.845067	-72.189368	-103.00	-2005.87
7	GUIDE	1197885328	7.22	3991	-0.038	-0.174	0.052	0.082	16.283090	-71.733943	756.94	225.00

2.4 Star Slots

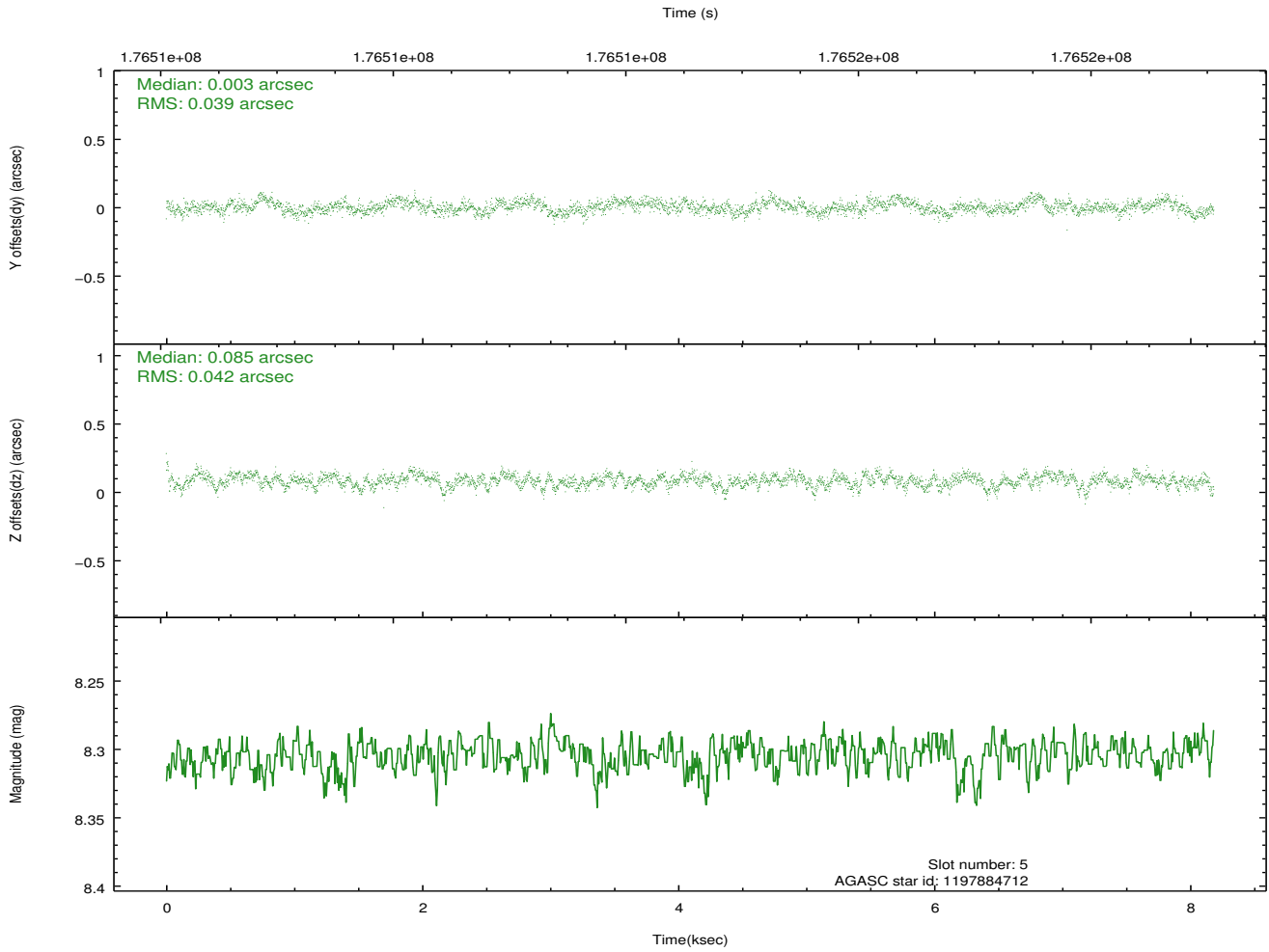
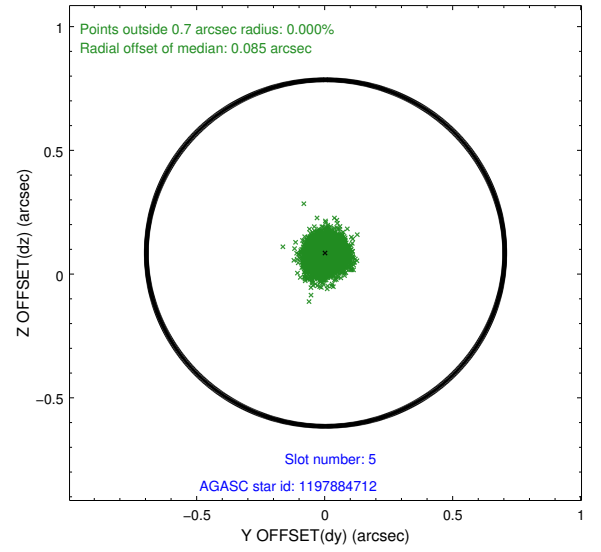
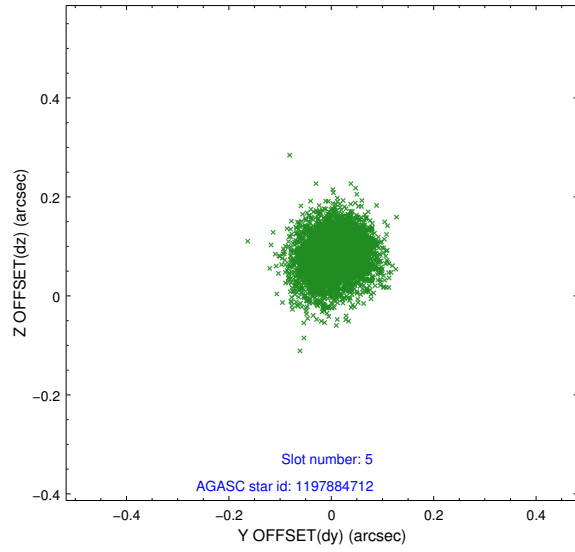
2.4.1 Slot 3



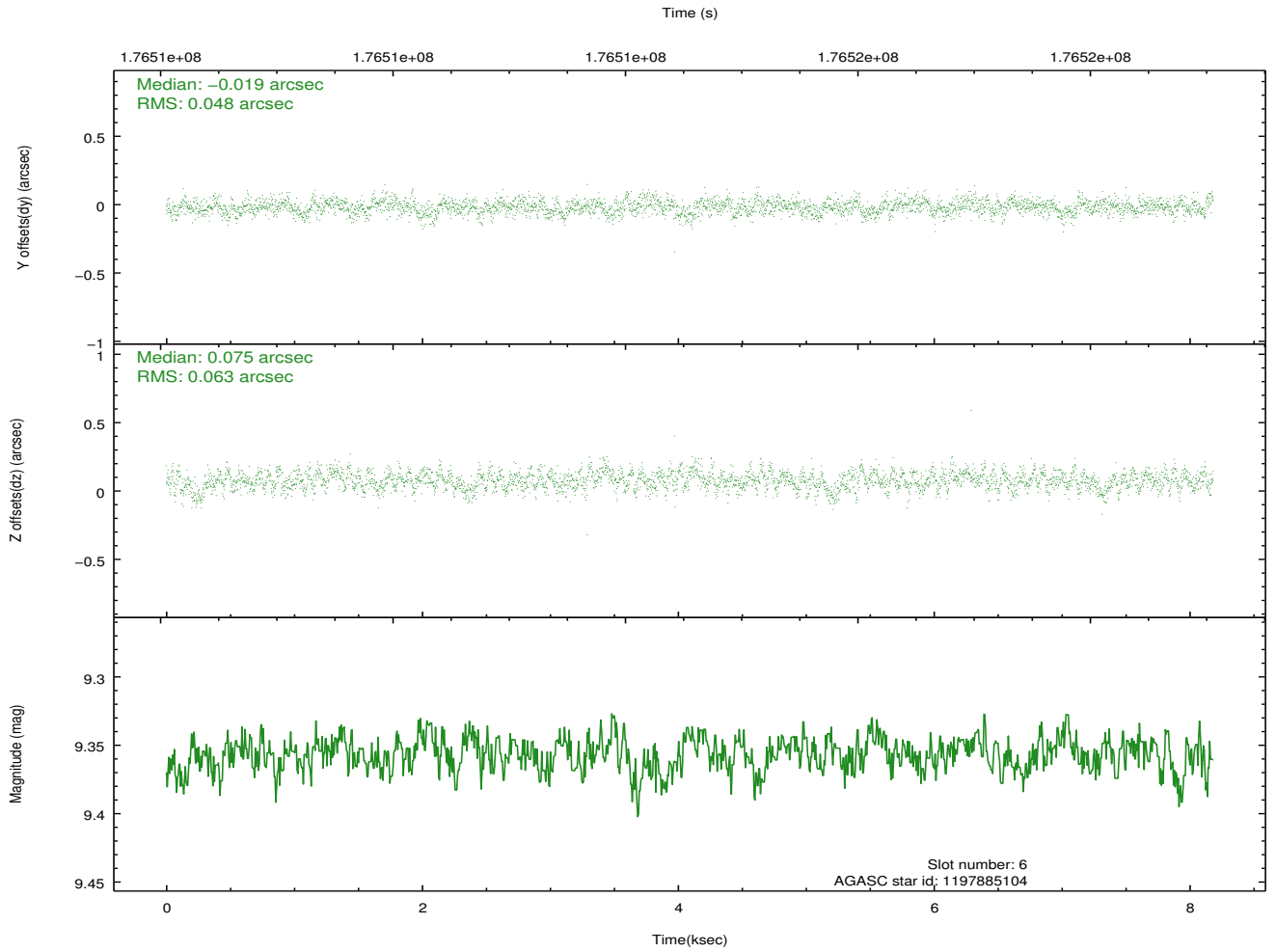
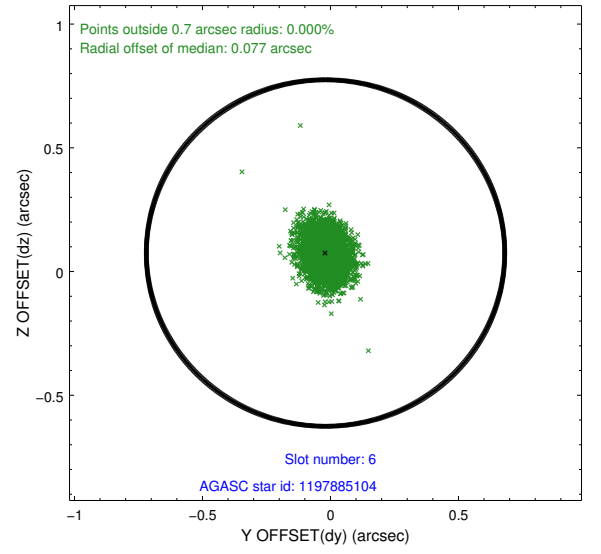
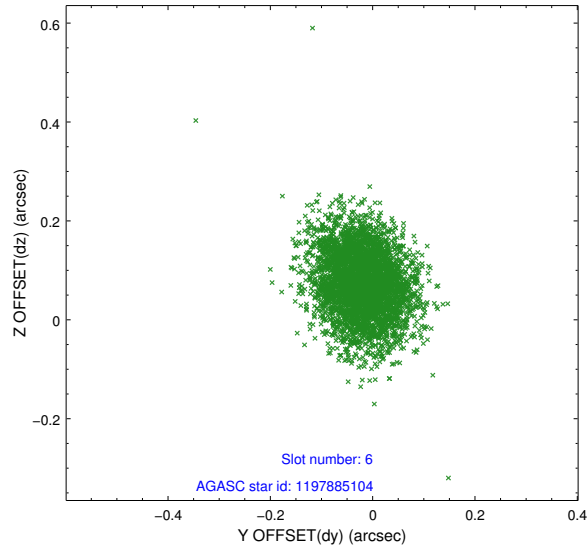
2.4.2 Slot 4



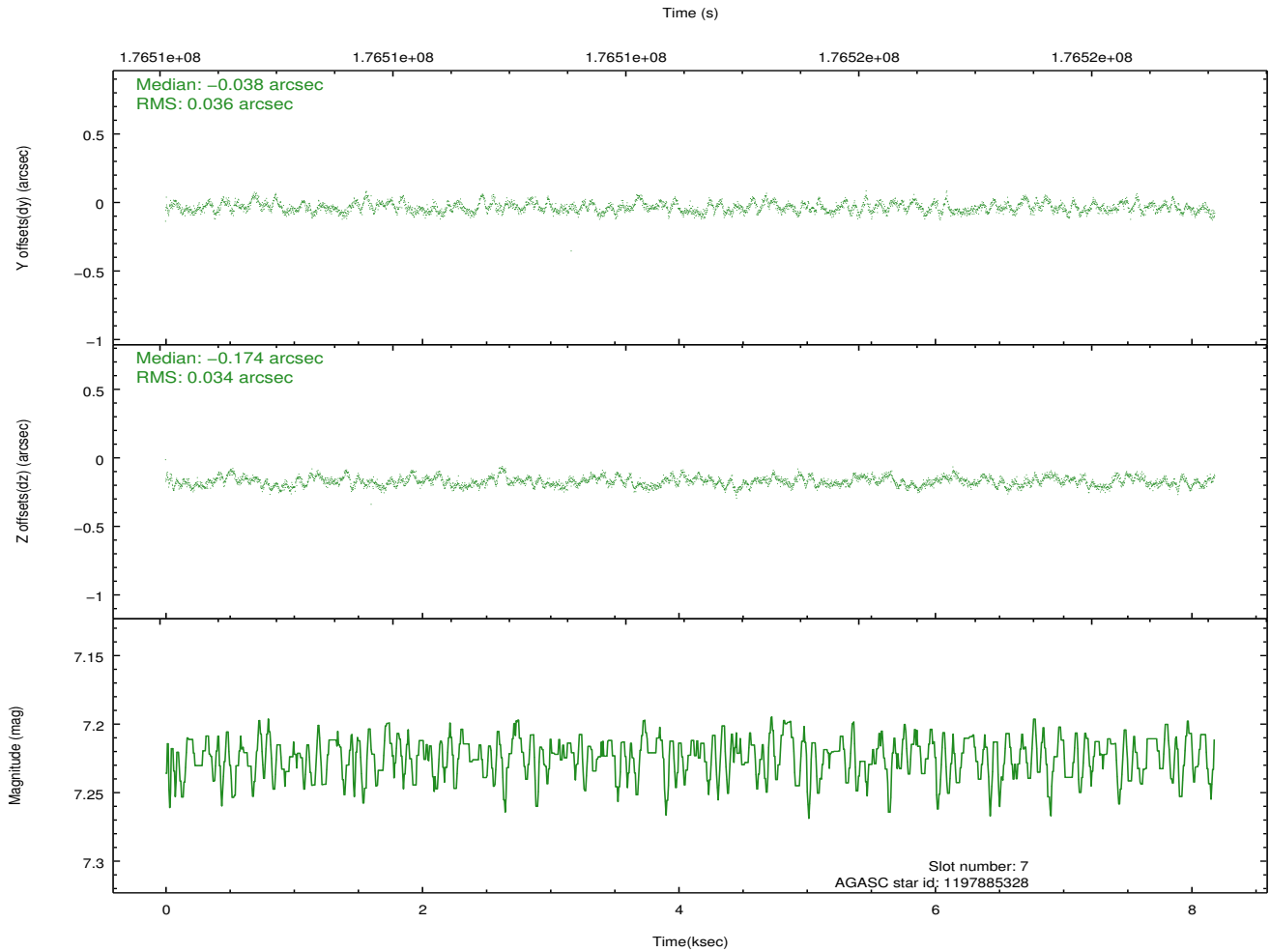
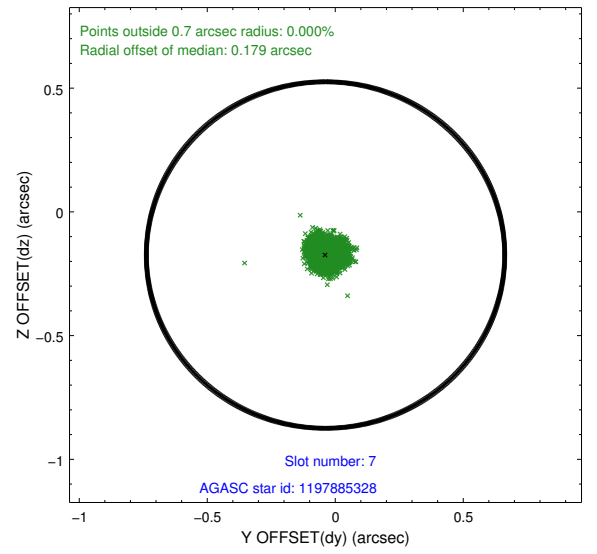
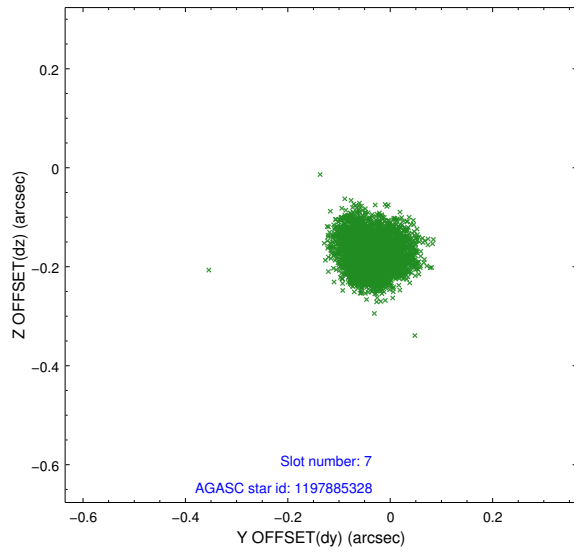
2.4.3 Slot 5



2.4.4 Slot 6

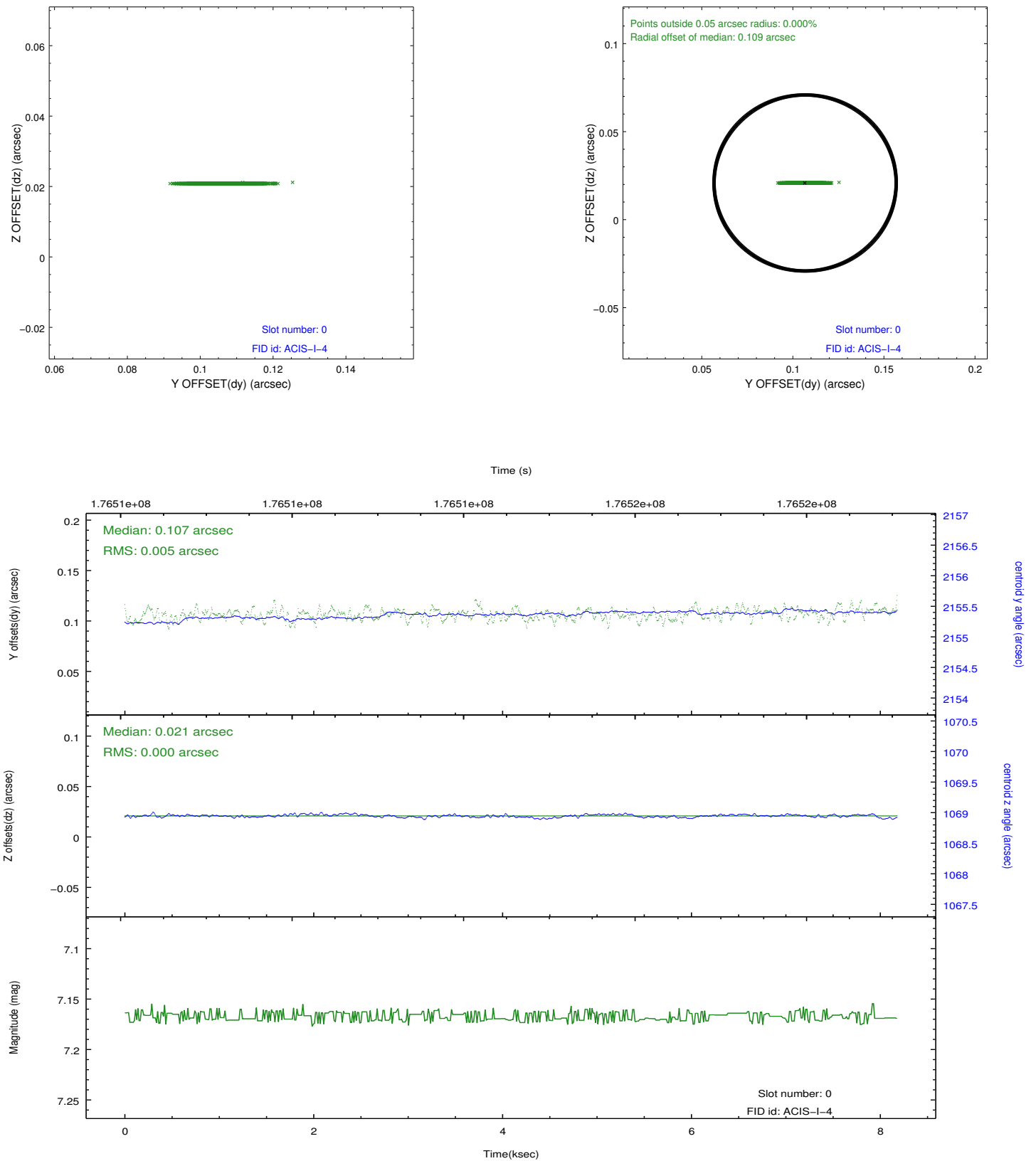


2.4.5 Slot 7

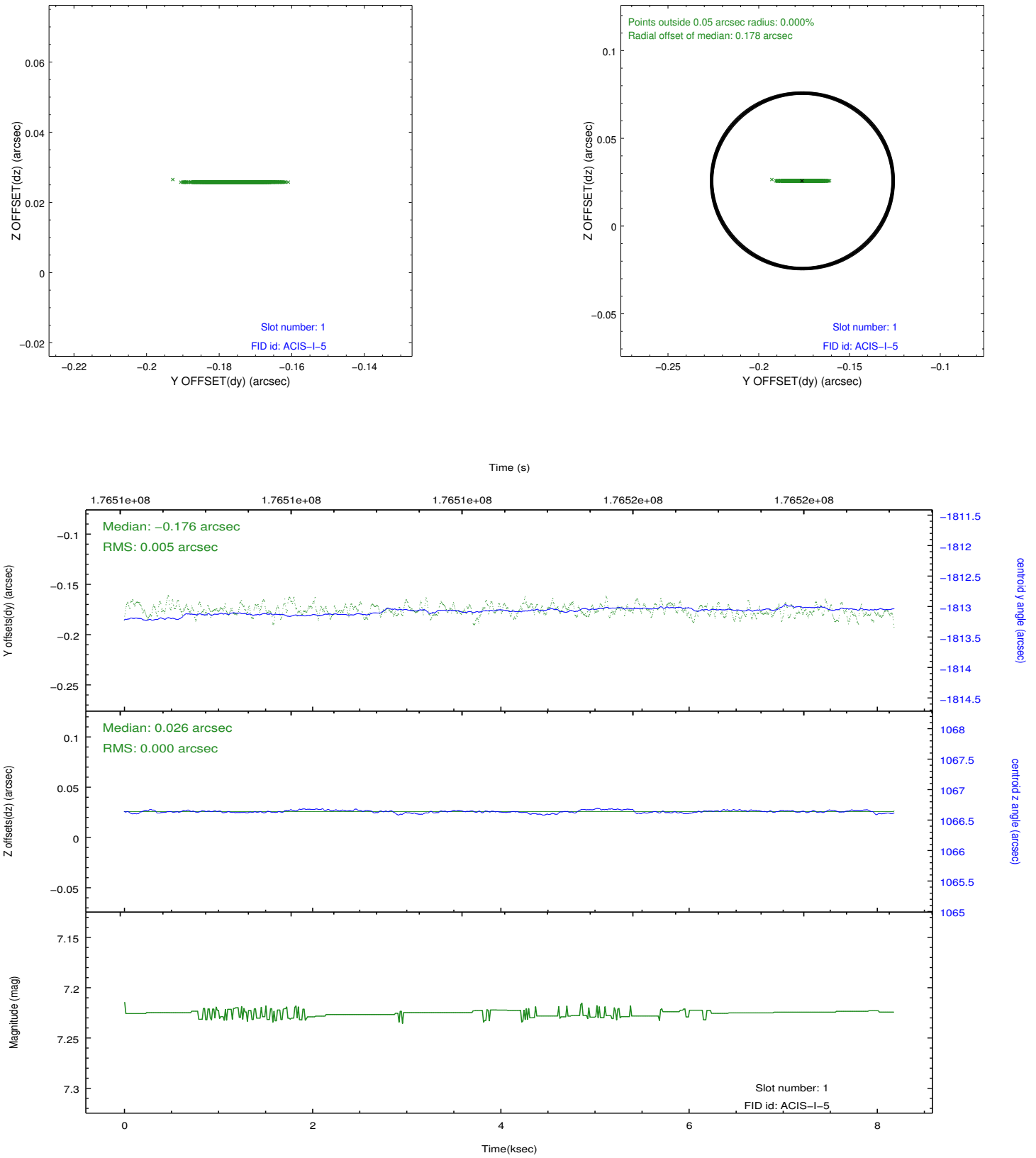


2.5 FID Slots

2.5.1 Slot 0



2.5.2 Slot 1



A Summary

A.1 Status

V&V Scientist	Beth Sundheim
V&V Date (YYYY-MM-DD)	2013.01.22
V&V Edition	1
V&V Disposition and Status	OK
V&V Charge Time	8.181

A.2 Comments

Window preference met.

The fid light in slot 2 was removed from the aspect solution due to poor data quality. The aspect solution is improved by the removal of this fid light from the solution.