

V&V Reference Report

L2 ASCDS Version : 7.6.10

Observation 3406 - L2 Version 001
Chandra X-Ray Center

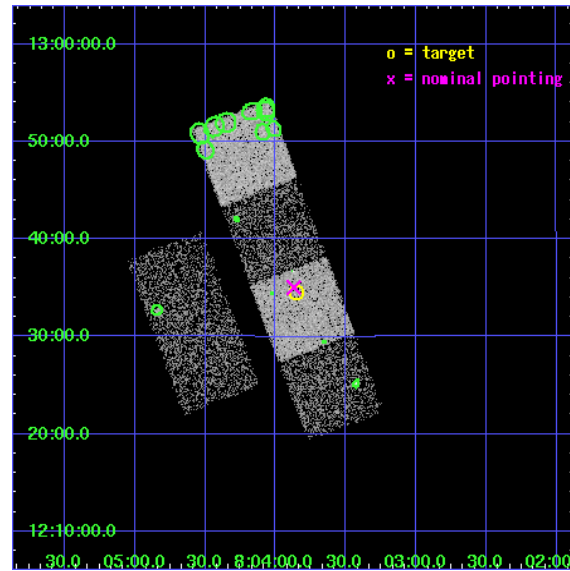
L2 Processing Date : Jan 19 2007

Contents

1	Front	2
2	OBI	3
2.1	OBI	3
2.1.1	Images	3
2.1.2	Bias	3
2.1.3	Parameters	4
2.1.4	Events	4
2.2	Compared Parameters	5
2.3	Aspect	6
2.4	Star Slots	9
2.4.1	Slot 3	9
2.4.2	Slot 4	10
2.4.3	Slot 5	11
2.4.4	Slot 6	12
2.4.5	Slot 7	13
2.5	FID Slots	14
2.5.1	Slot 0	14
2.5.2	Slot 1	15
2.5.3	Slot 2	16
3	Point Sources	17
A	Summary	18
A.1	Status	18
A.2	Comments	18

1 Front

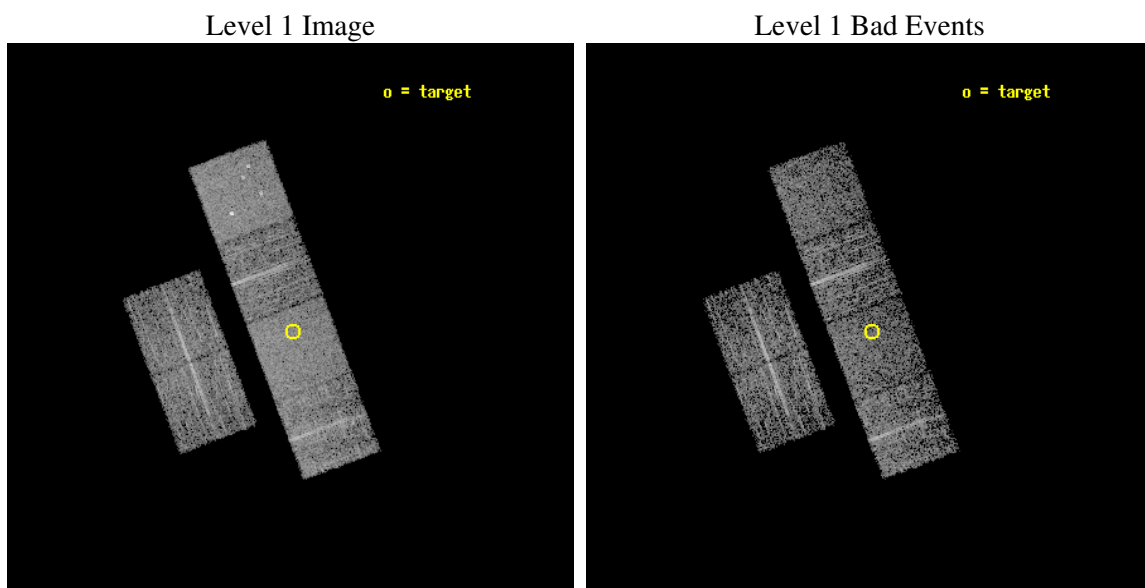
seq_num	100016
obs_id	3406
title	ASTEROID OBSERVATION
observer	Professor Gordon Garmire
object	1998 WT24
dtcycle	0
cycle	P
ra_targ	120.9624
dec_targ	12.5757
ra_nom	120.96746832553
dec_nom	12.584150718698
roll_nom	69.409791042367
revision	2
ontime	3484.8000032455
livetime	3440.6733673097
ontime2	3484.8000032455
ontime3	3484.8000032455
ontime5	3481.5590528995
ontime6	3484.8000032455
ontime7	3484.8000032455
ontime8	3484.8000032455
l2events	35391



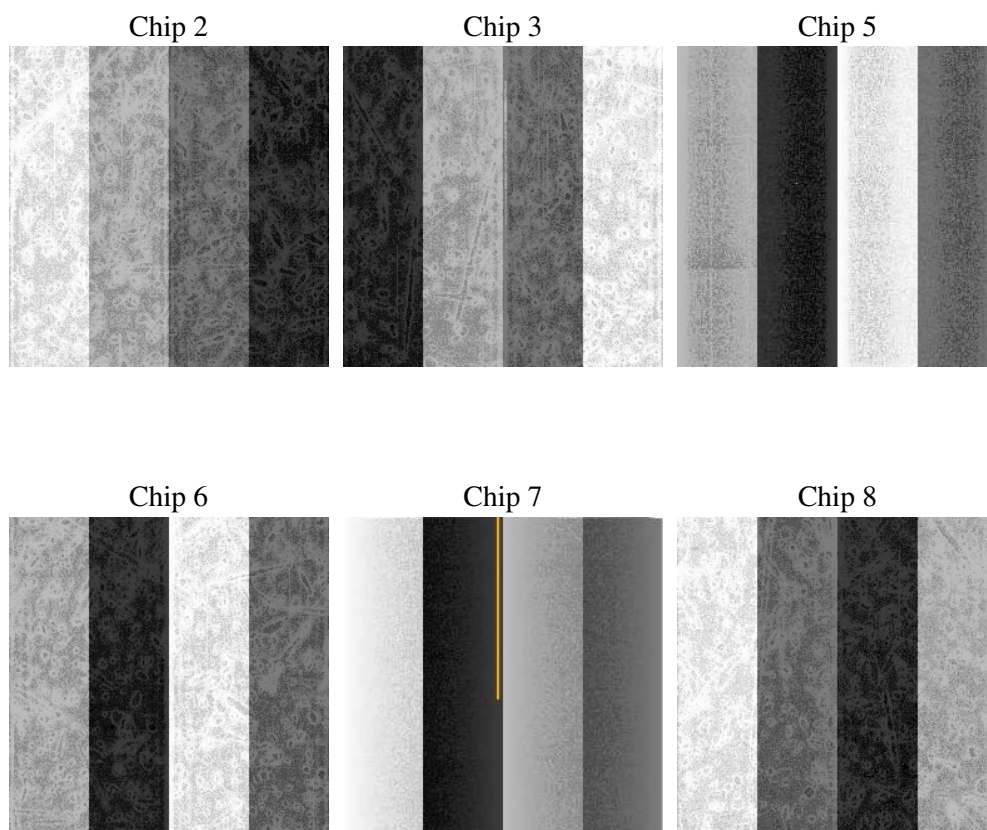
2 OBI

2.1 OBI

2.1.1 Images



2.1.2 Bias



2.1.3 Parameters

obi_num	0
ascdsver	7.6.10
caldsver	3.3.0
date	2007-01-19T23:37:10
revision	2

sched_exp_time	3300.000000
ontime	3484.8000032455
ontime2	3484.8000032455
ontime3	3484.8000032455
ontime5	3481.5590528995
ontime6	3484.8000032455
ontime7	3484.8000032455
ontime8	3484.8000032455
l1events	169426

2.1.4 Events

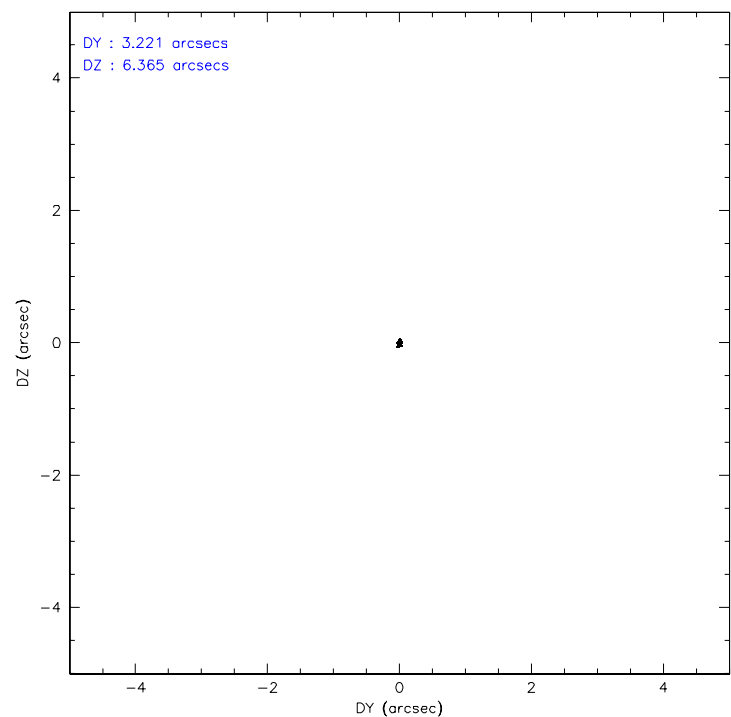
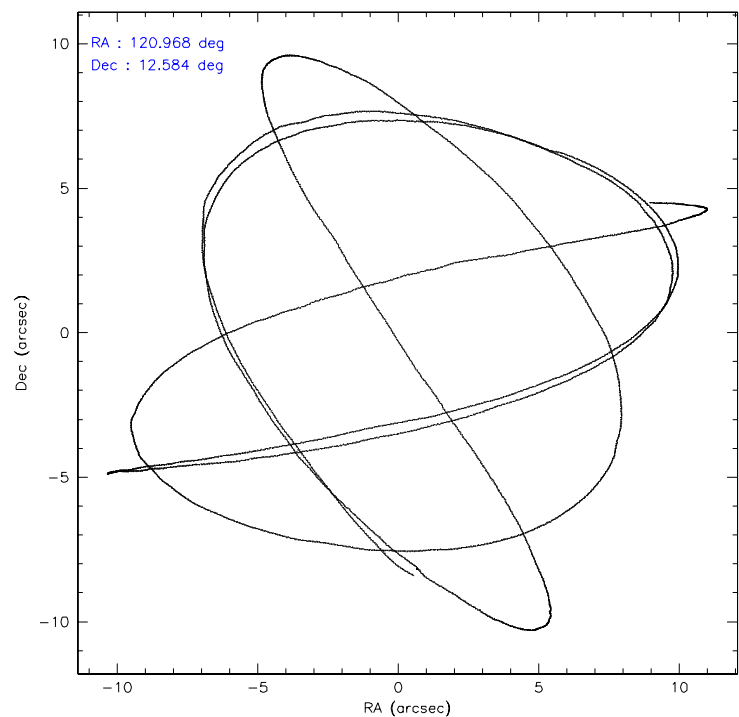
	ccd 2	ccd 3	ccd 5	ccd 6	ccd 7	ccd 8
level 1 events	23553	24139	34889	24571	32071	30203
rejected events	21025	21622	19393	21856	19648	24117
rejected %	89%	89%	55%	88%	61%	79%

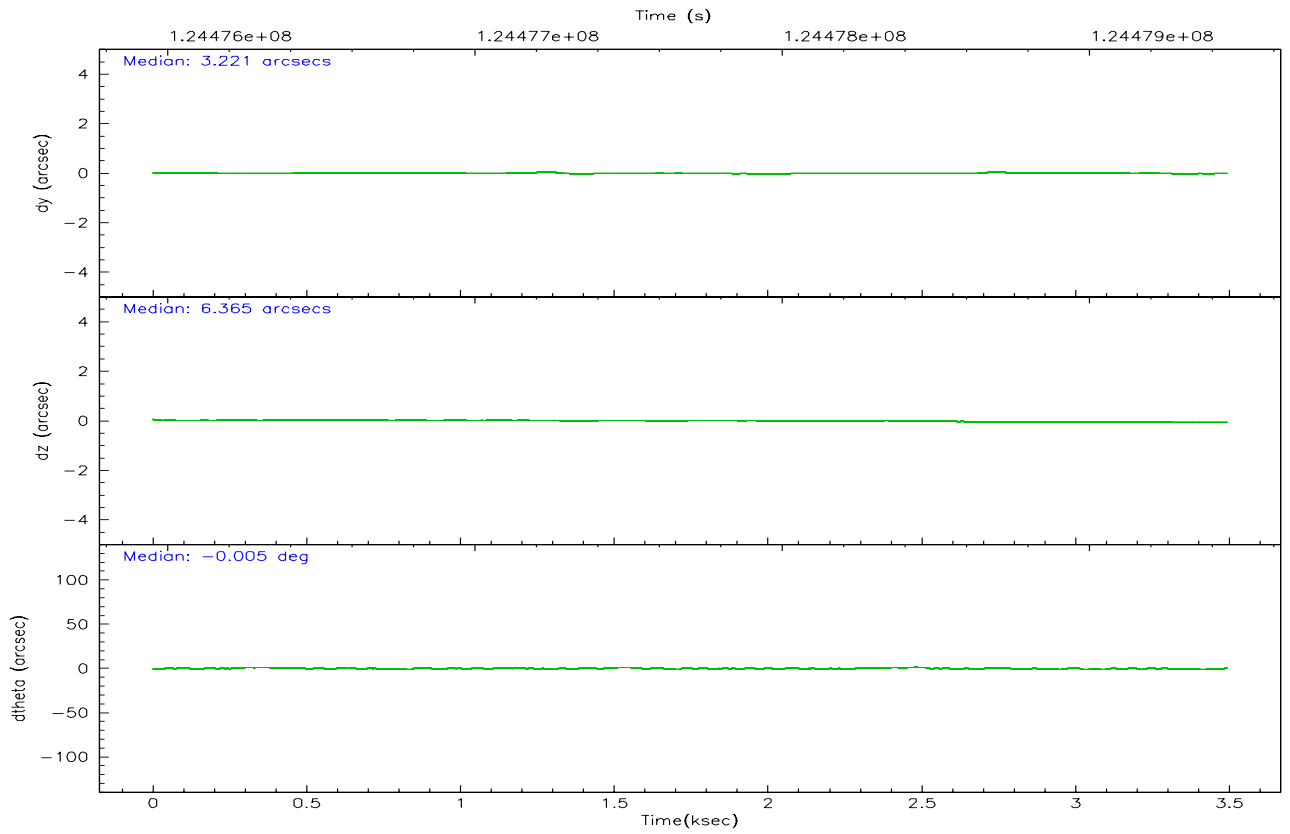
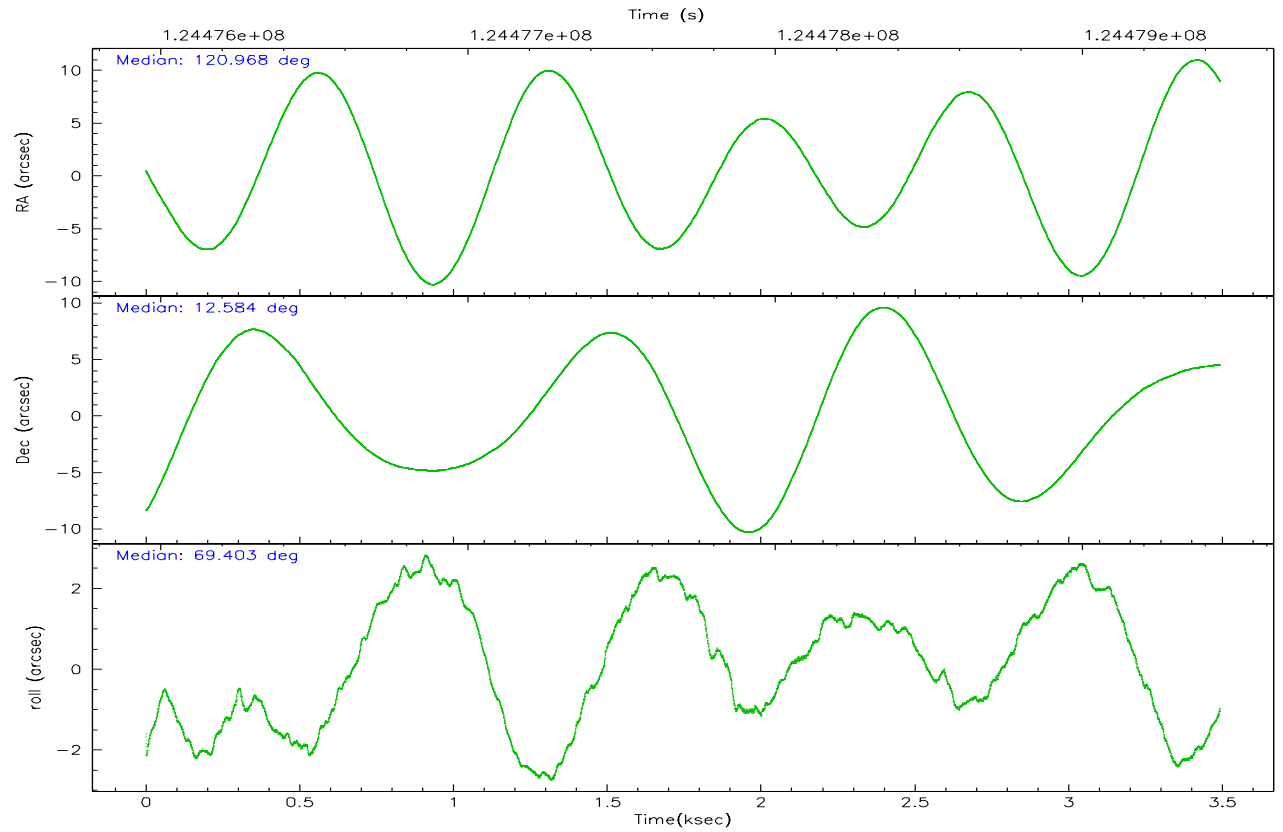
	ccd 2	ccd 3	ccd 5	ccd 6	ccd 7	ccd 8
grade 0 events	1105	1103	2132	1076	1179	2252
	4%	4%	6%	4%	3%	7%
grade 1 events	16	6	47	1	34	20
	0%	0%	0%	0%	0%	0%
grade 2 events	590	555	4764	570	2622	1239
	2%	2%	13%	2%	8%	4%
grade 3 events	254	244	597	291	1227	796
	1%	1%	1%	1%	3%	2%
grade 4 events	268	254	608	280	1234	751
	1%	1%	1%	1%	3%	2%
grade 5 events	830	993	2533	1023	3091	1393
	3%	4%	7%	4%	9%	4%
grade 6 events	474	495	8224	636	6867	1324
	2%	2%	23%	2%	21%	4%
grade 7 events	20016	20489	15984	20694	15817	22428
	84%	84%	45%	84%	49%	74%

2.2 Compared Parameters

Parameter	Planned	Actual	Parameter	Planned	Actual
Instrument	ACIS	ACIS	Obspar format version number	6	6
Detector	ACIS-235678	ACIS-235678	Obspar file type	PREDICTED	ACTUAL
Grating	NONE	NONE	Obspar update status	NONE	UPDATED
Data mode	FAINT	FAINT	Number of optional ACIS chips dropped	0	0
Observation mode	POINTING	POINTING	On-chip summing requested	N	N
Pointing RA	120.972394	120.9674683255337	Subarray requested	NONE	NONE
Pointing Dec	12.557209	12.58415071869756	Alternating exposures requested	N	N
Pointing Roll	69.252083	69.40979104236683	Primary exposure time	0.000000	3.2
SIM focus pos (mm)	-0.684267	-0.6828225247311905			
SIM defocus (mm)	0	0.001444936568705701			
SIM translation stage pos (mm)	-190.132523	-190.1425803651734			
SIM translation stage offset (mm)	0	0.01005778216563158			
Observation start time	124476145.184000	124475768.6915			
Observation start date	2001-12-11T16:41:21	2001-12-11T16:36:08			
Observation end time	124479445.184000	124480211.55417			
Observation end date	2001-12-11T17:36:21	2001-12-11T17:50:11			
Read mode	TIMED	TIMED			

2.3 Aspect



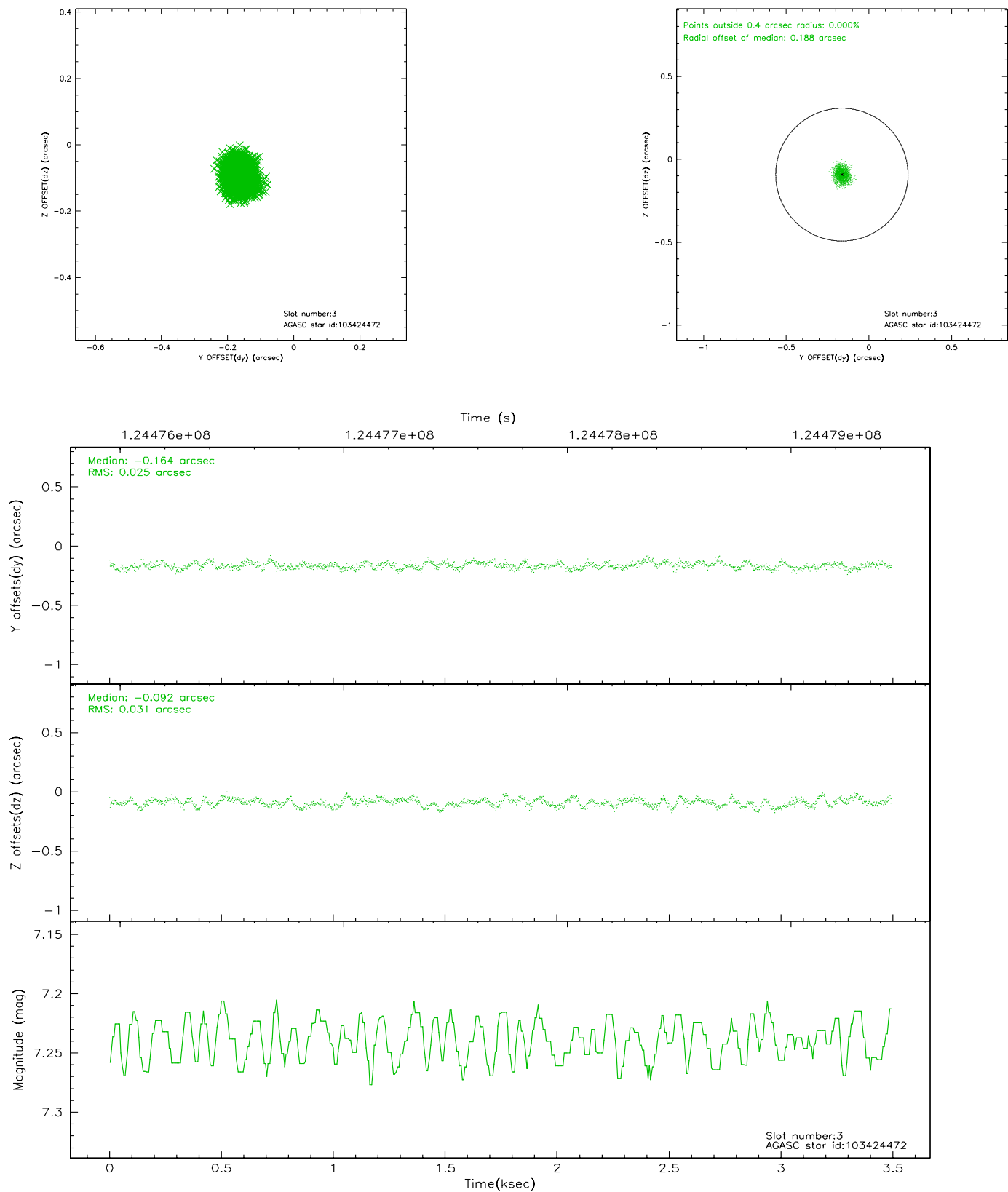


Slot Statistics

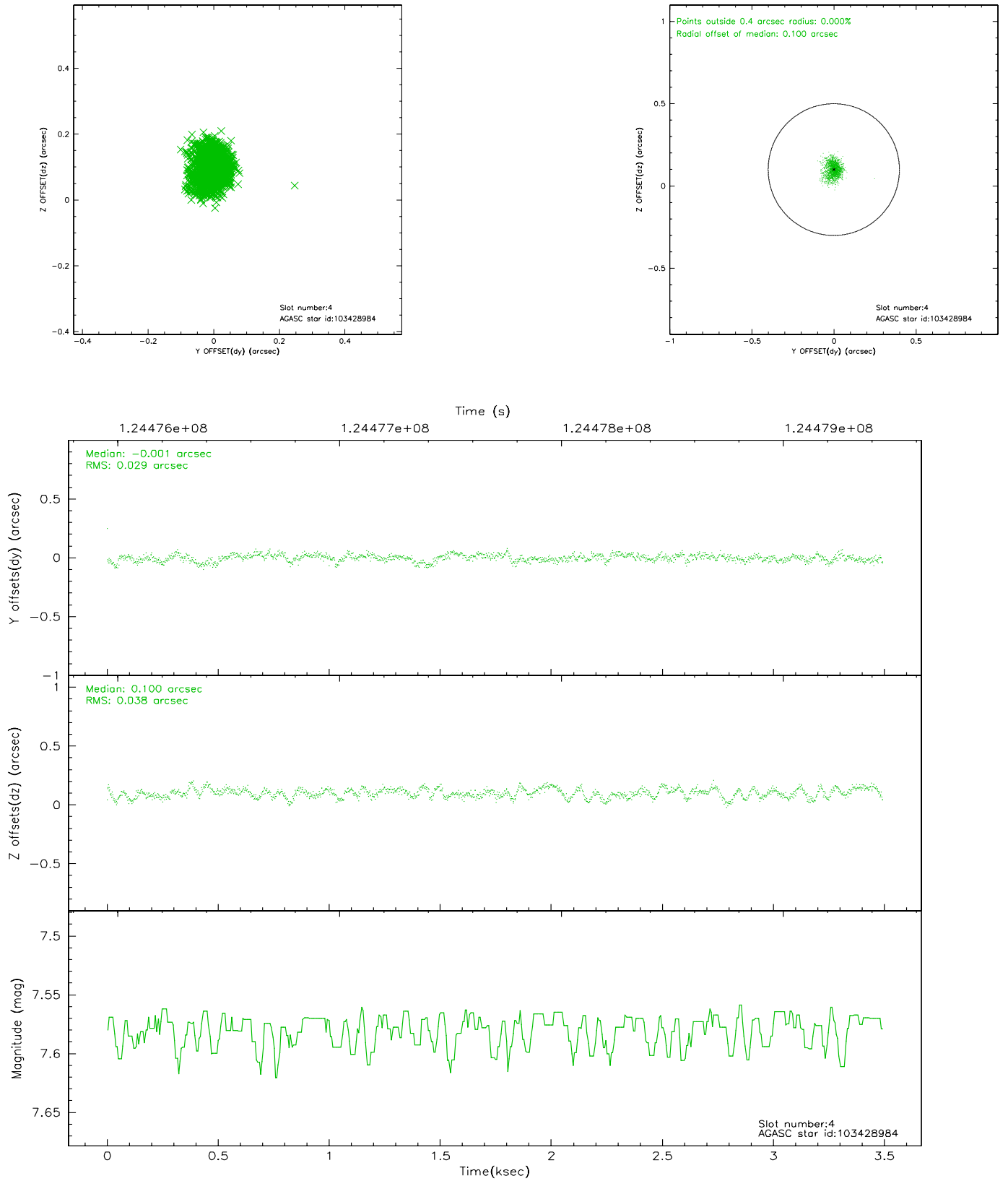
slot	status	id	mag	n_pts	med_dy	med_dz	dr1	dr2	ra	dec	mean_y	mean_z
0	FID	ACIS-S-2	7.11	848	-0.016	0.034	0.007	0.011	0.000000	0.000000	-755.85	-1727.44
1	FID	ACIS-S-4	7.21	847	-0.051	-0.001	0.007	0.011	0.000000	0.000000	2156.53	179.18
2	FID	ACIS-S-5	7.24	848	0.037	-0.024	0.007	0.011	0.000000	0.000000	-1806.33	174.83
3	GUIDE	103424472	7.24	1697	-0.164	-0.092	0.043	0.068	120.737980	12.944300	1010.90	1263.05
4	GUIDE	103428984	7.58	1700	-0.001	0.100	0.052	0.083	121.225289	12.178709	-958.79	-1313.94
5	GUIDE	103289632	8.39	1697	0.054	-0.298	0.072	0.114	120.244598	12.444713	-1283.55	2249.28
6	GUIDE	103421224	9.31	1699	-0.036	0.111	0.089	0.140	121.400696	12.500636	342.40	-1477.85
7	GUIDE	103418896	9.34	1698	0.144	0.181	0.082	0.135	121.003365	11.925234	-2089.42	-908.84

2.4 Star Slots

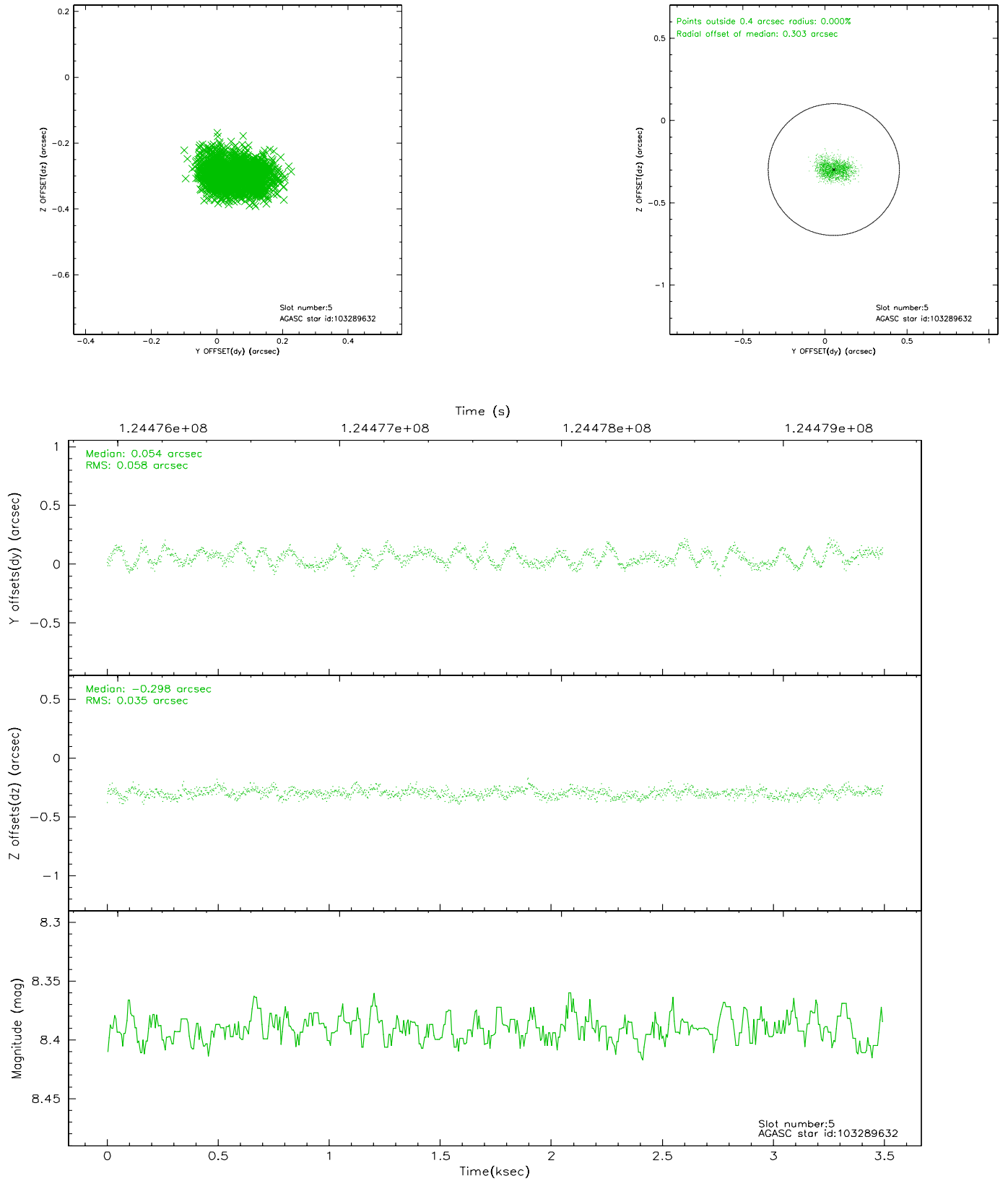
2.4.1 Slot 3



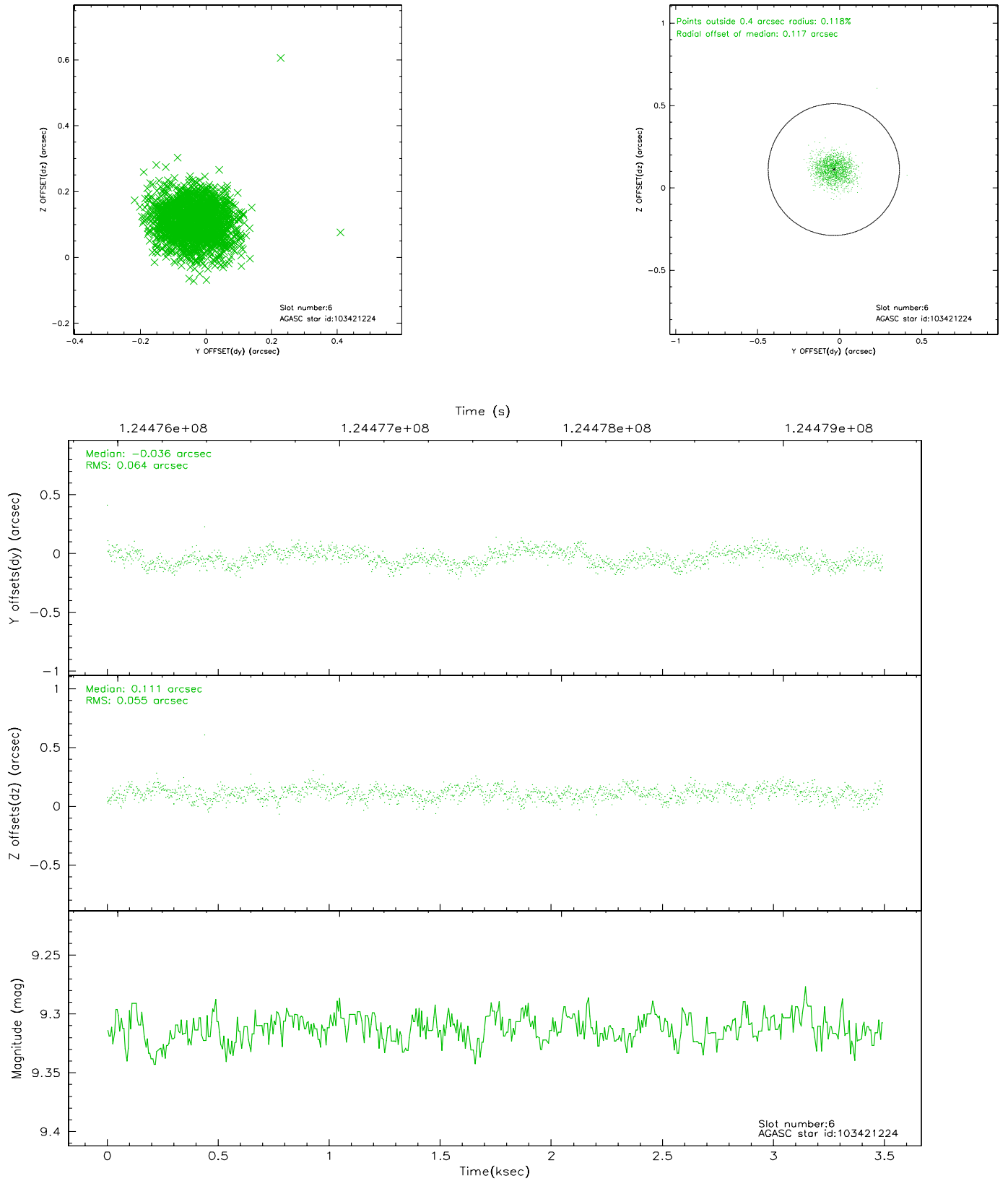
2.4.2 Slot 4



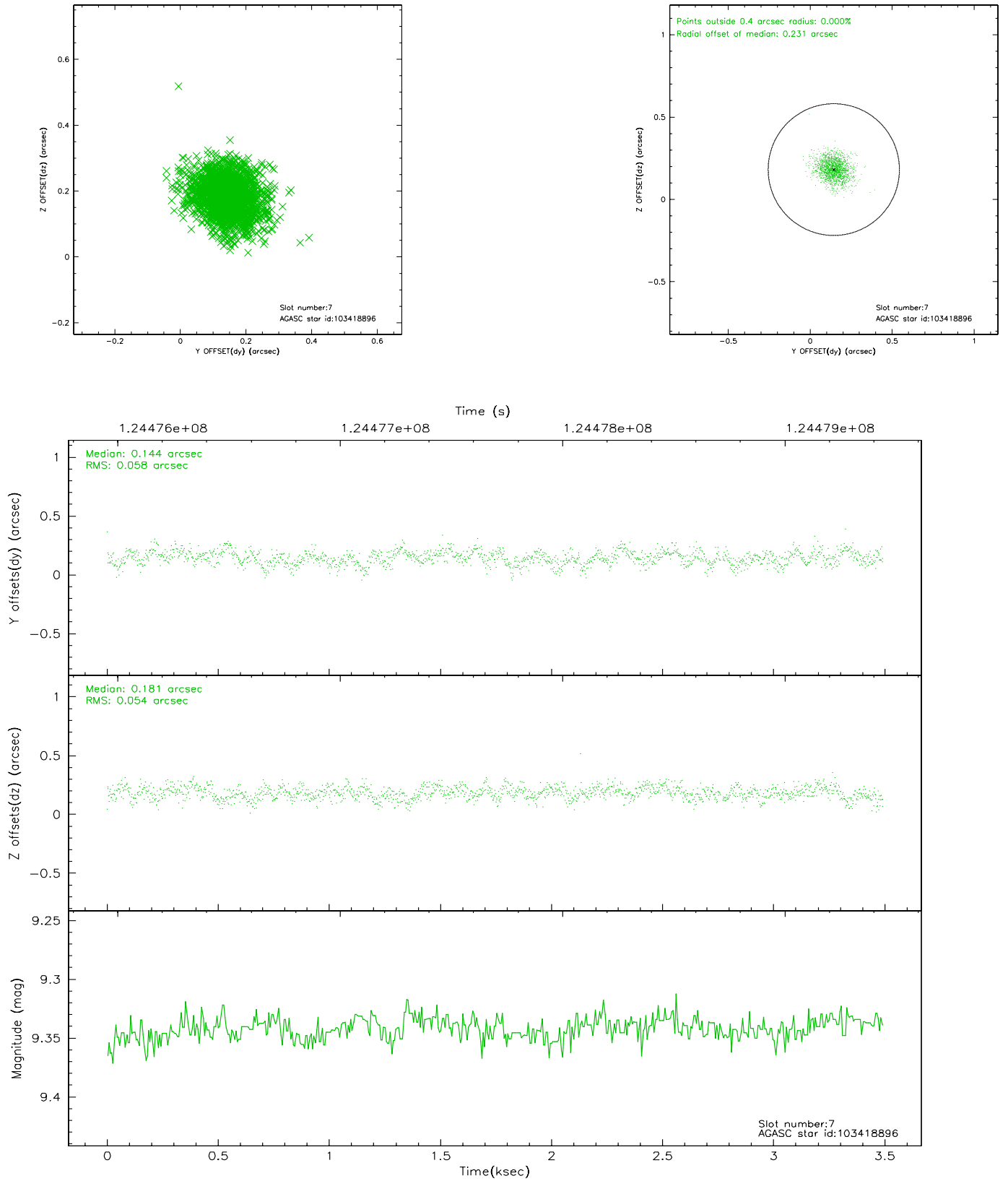
2.4.3 Slot 5



2.4.4 Slot 6

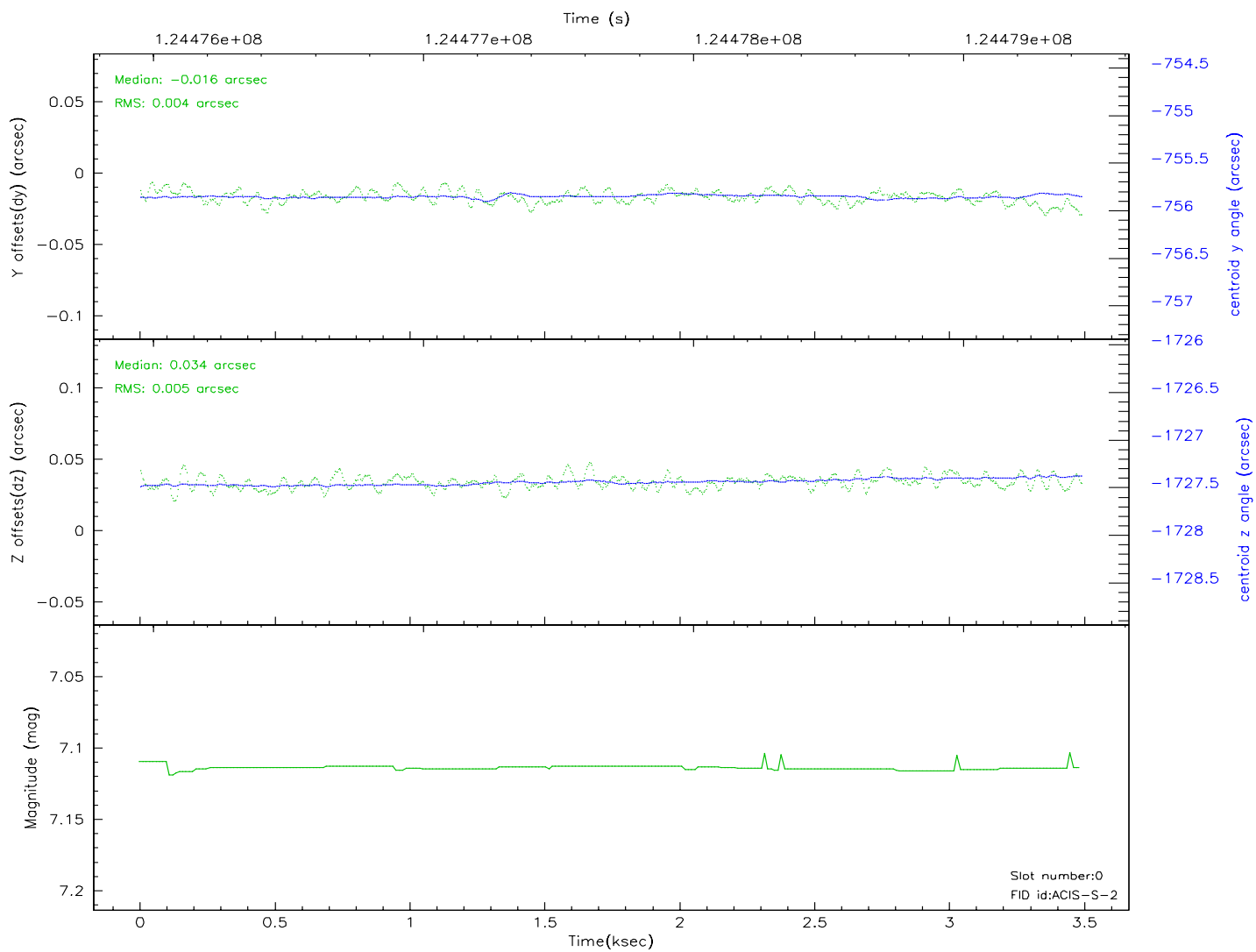
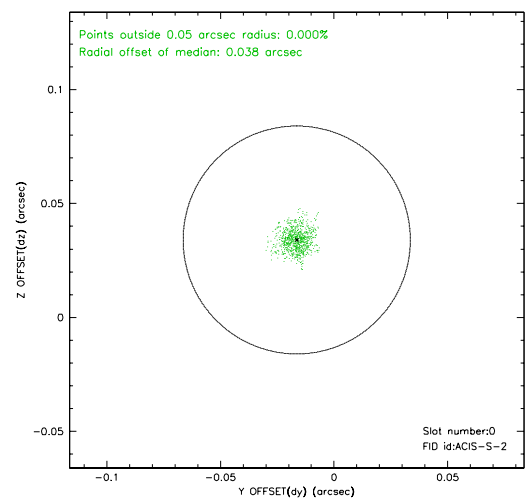
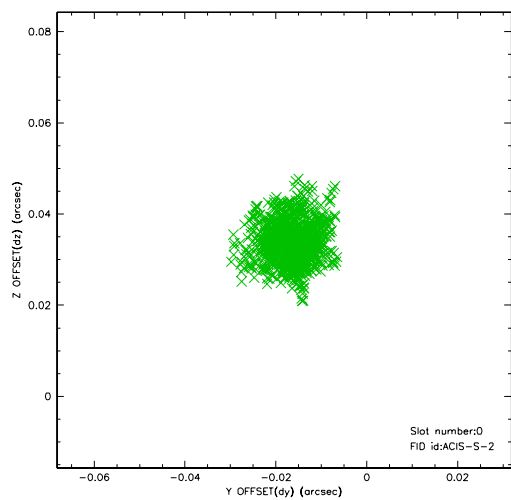


2.4.5 Slot 7

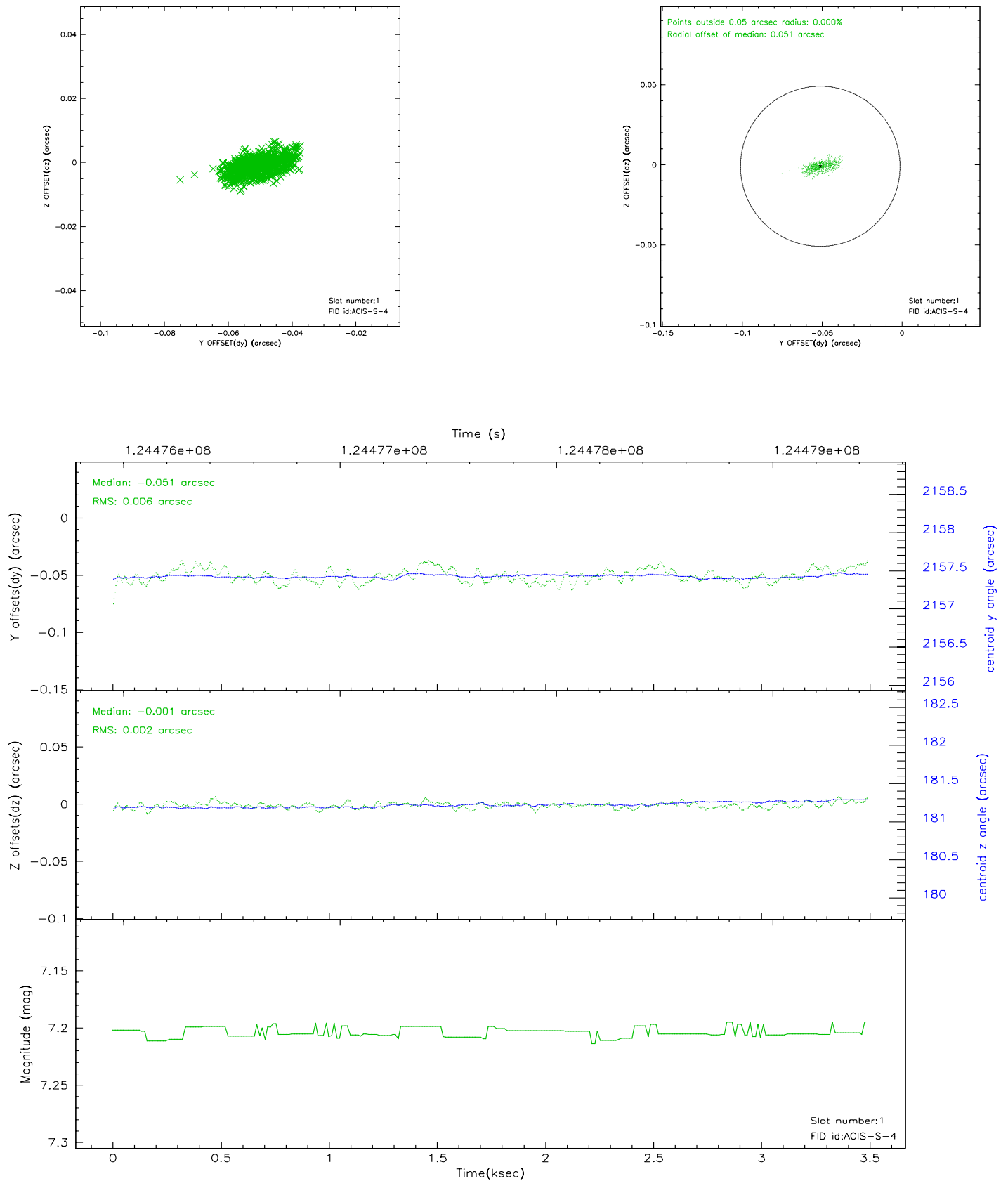


2.5 FID Slots

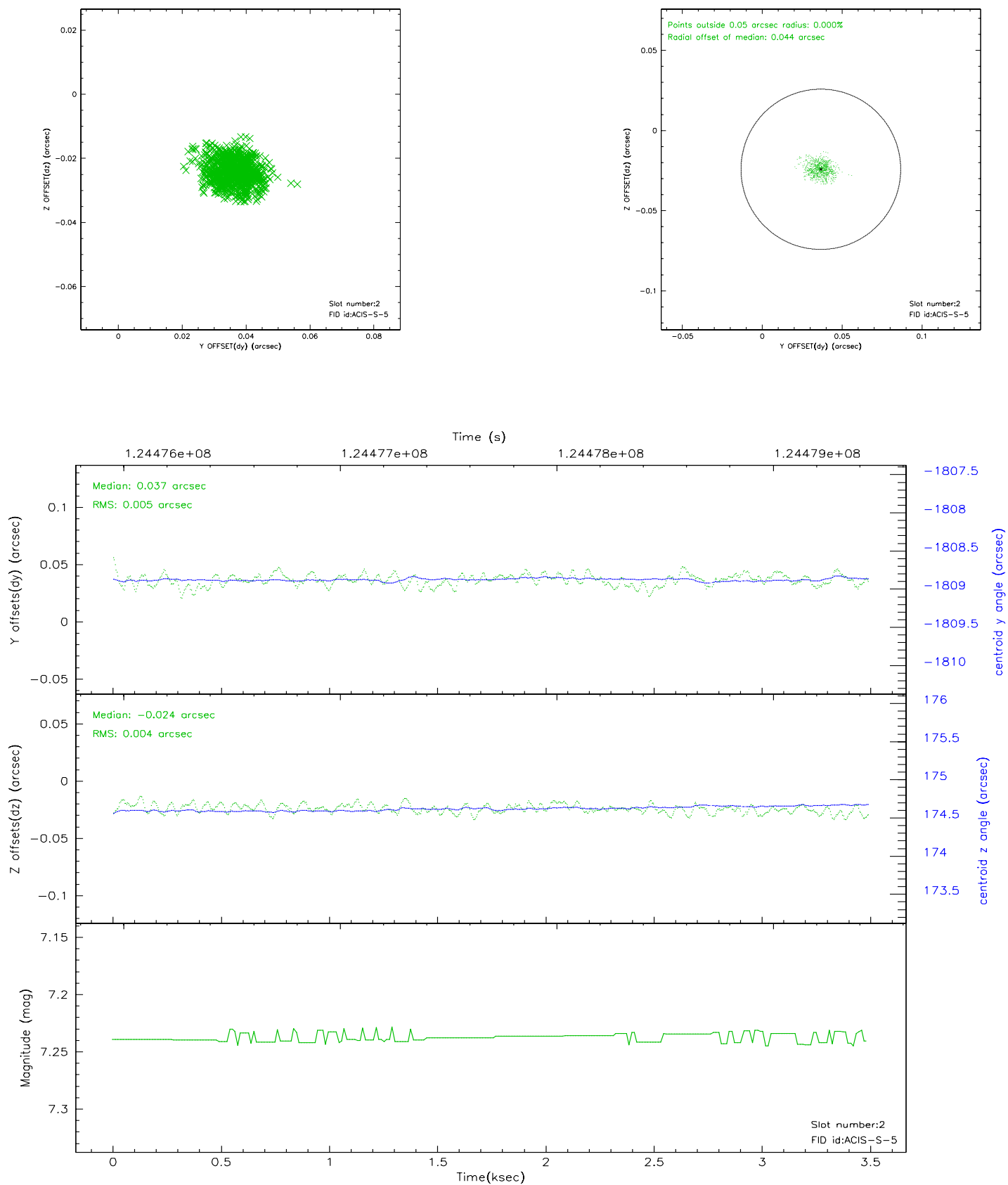
2.5.1 Slot 0



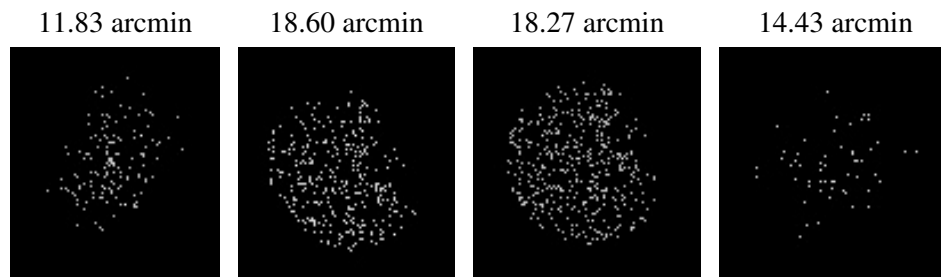
2.5.2 Slot 1



2.5.3 Slot 2



3 Point Sources



A Summary

A.1 Status

V&V Scientist	Beth Sundheim
V&V Date (YYYY-MM-DD)	2007.01.21
V&V Edition	1
V&V Disposition and Status	OK
V&V Charge Time	3.484

A.2 Comments