

V&V Reference Report

L2 ASCDS Version : 7.6.8.1

Observation 3326 - L2 Version 001
Chandra X-Ray Center

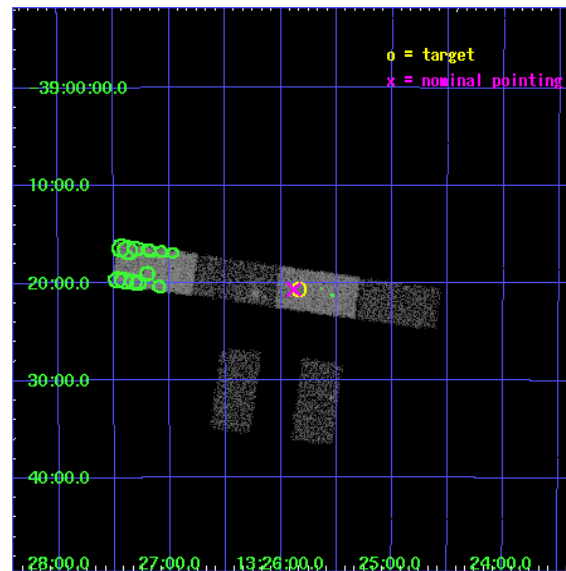
L2 Processing Date : Sep 9 2006

Contents

1	Front	2
2	OBI	3
2.1	OBI	3
2.1.1	Images	3
2.1.2	Bias	3
2.1.3	Parameters	4
2.1.4	Events	4
2.2	Compared Parameters	5
2.3	Aspect	6
2.4	Star Slots	9
2.4.1	Slot 3	9
2.4.2	Slot 4	10
2.4.3	Slot 5	11
2.4.4	Slot 6	12
2.4.5	Slot 7	13
2.5	FID Slots	14
2.5.1	Slot 0	14
2.5.2	Slot 1	15
2.5.3	Slot 2	16
3	Point Sources	17
A	Summary	18
A.1	Status	18
A.2	Comments	18

1 Front

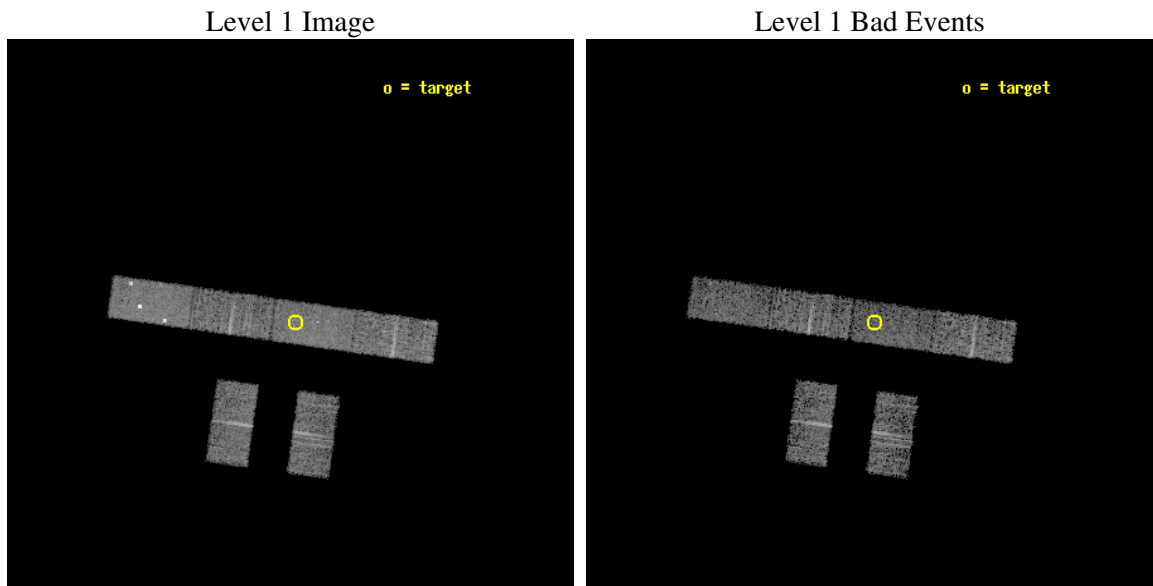
seq_num	900165
obs_id	3326
title	THE SHEEP SURVEY: WHAT KIND OF OBJECTS MAKE THE X-RAY BACKGROUND?
observer	Professor Kirpal Nandra
object	AX J1325.8-3920
dtcycle	0
cycle	P
ra_targ	201.458333
dec_targ	-39.344444
ra_nom	201.47070612993
dec_nom	-39.344859685202
roll_nom	8.0032297344709
revision	2
ontime	5401.8000357747
livetime	5281.3844698619
ontime2	5401.8000357747
ontime3	5401.8000357747
ontime5	5401.8000357747
ontime6	5401.8000357747
ontime7	5401.8000357747
ontime8	5401.8000357747
l2events	29169



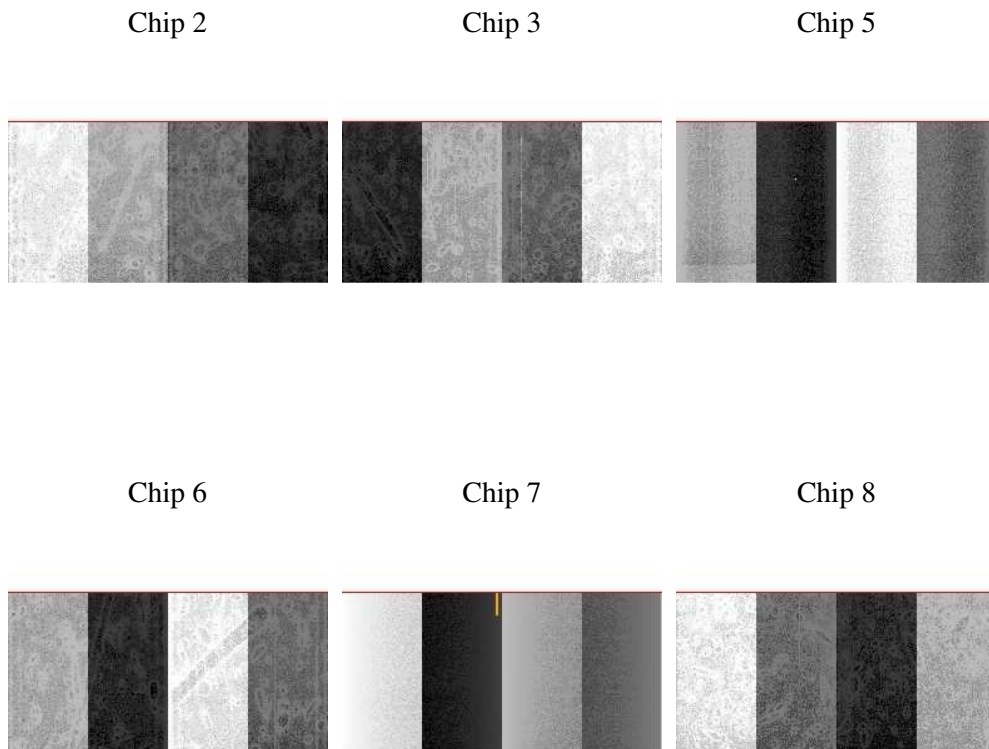
2 OBI

2.1 OBI

2.1.1 Images



2.1.2 Bias



2.1.3 Parameters

obi_num	1
ascdsver	7.6.8.1
caldsver	3.2.3
date	2006-09-09T16:19:55
revision	2

sched_exp_time	5000.000000
ontime	5405.2281096578
ontime2	5405.2281096578
ontime3	5405.2281096578
ontime5	5405.2281096578
ontime6	5405.2281096578
ontime7	5405.2281096578
ontime8	5405.2281096578
l1events	140526

2.1.4 Events

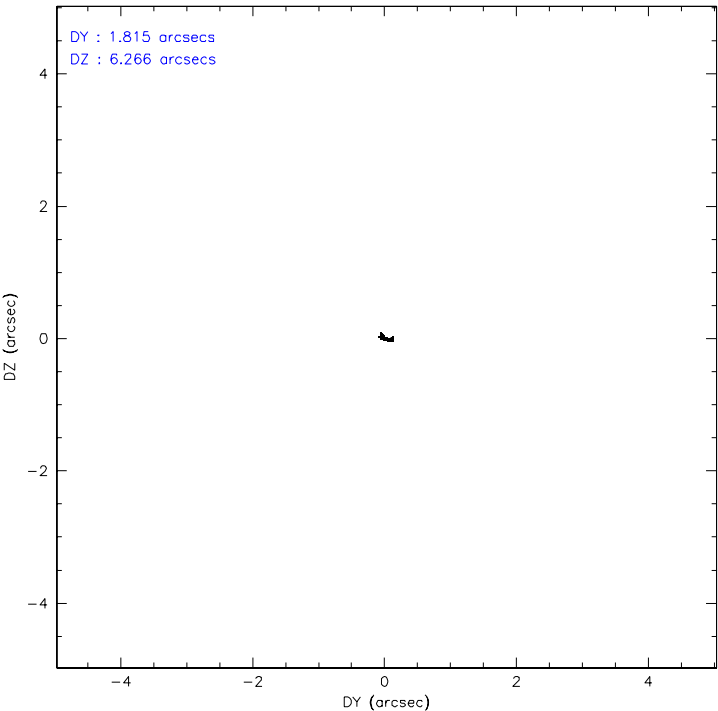
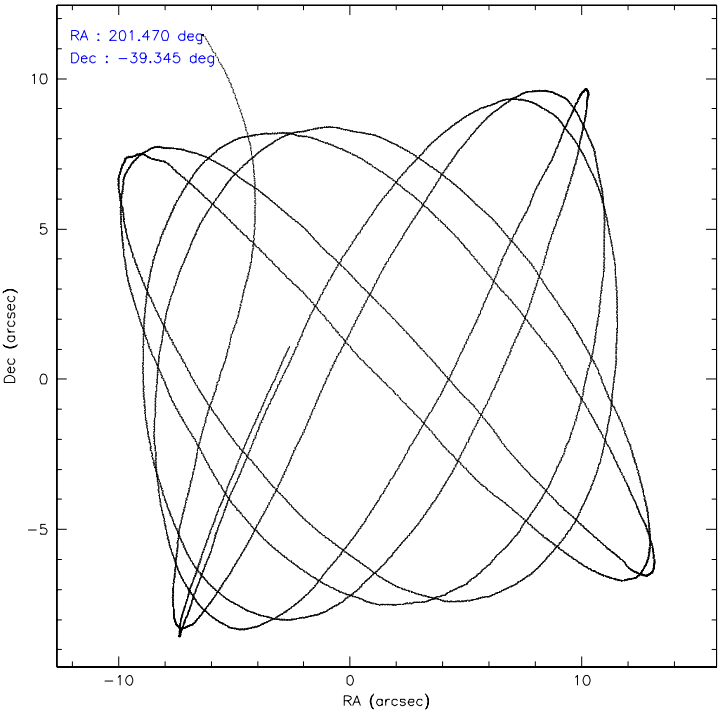
	ccd 2	ccd 3	ccd 5	ccd 6	ccd 7	ccd 8
level 1 events	20504	18979	30946	20805	24513	24779
rejected events	18198	16811	14492	18157	14368	19924
rejected %	88%	88%	46%	87%	58%	80%

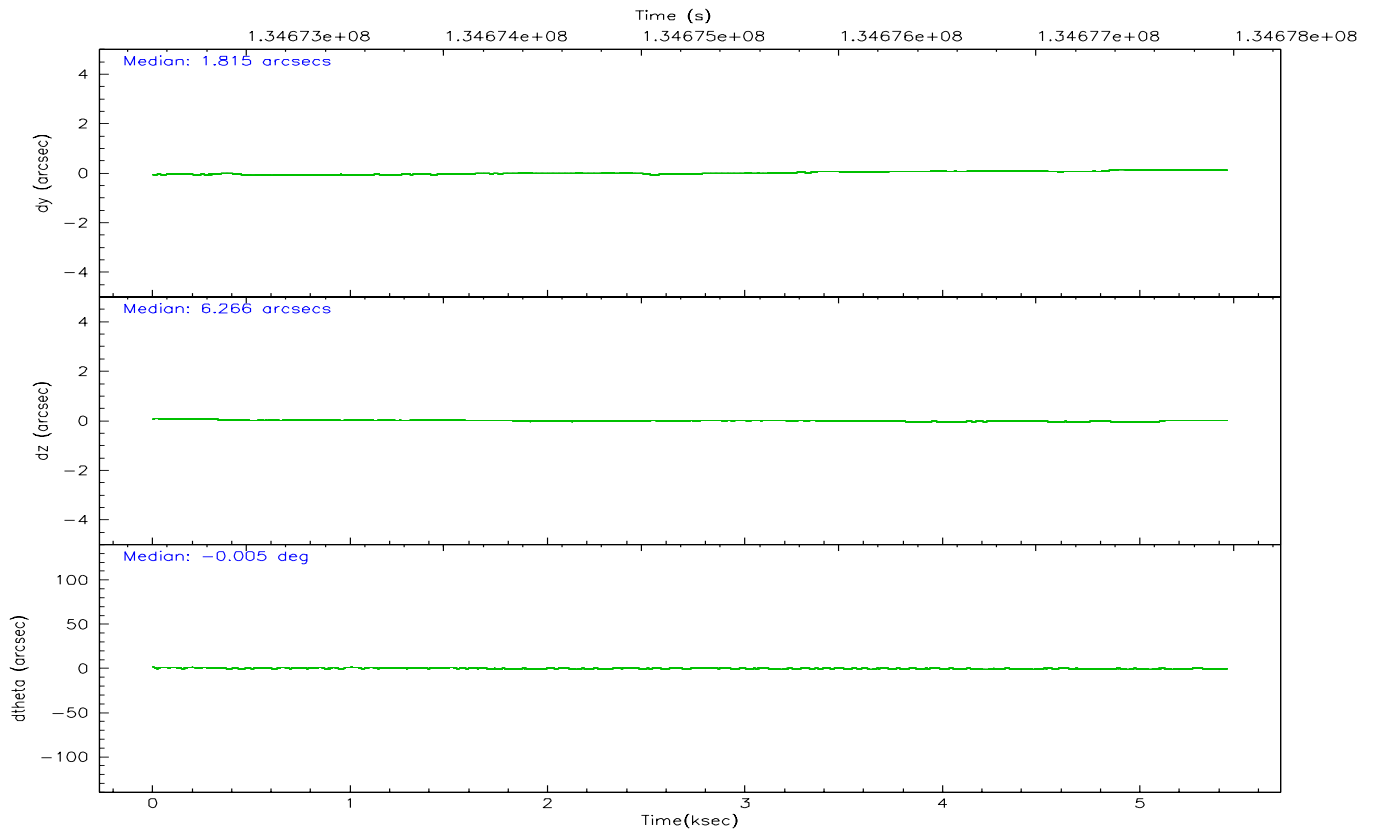
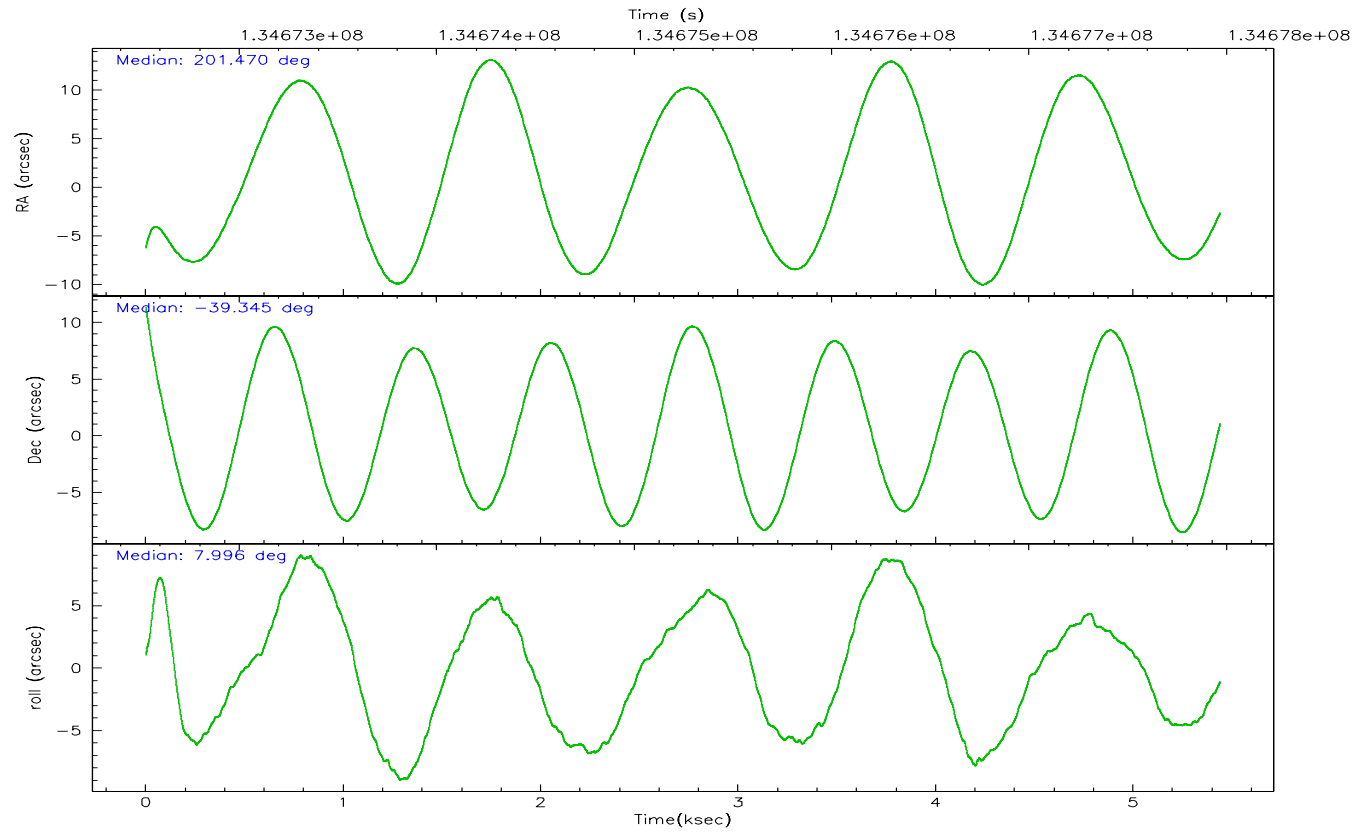
	ccd 2	ccd 3	ccd 5	ccd 6	ccd 7	ccd 8
grade 0 events	910	897	5435	1212	876	1414
	4%	4%	17%	5%	3%	5%
grade 1 events	3	8	73	8	18	5
	0%	0%	0%	0%	0%	0%
grade 2 events	477	380	3885	476	2493	1103
	2%	2%	12%	2%	10%	4%
grade 3 events	263	265	339	263	677	514
	1%	1%	1%	1%	2%	2%
grade 4 events	259	248	324	271	652	482
	1%	1%	1%	1%	2%	1%
grade 5 events	657	712	1243	817	1679	994
	3%	3%	4%	3%	6%	4%
grade 6 events	397	378	6477	428	5447	1345
	1%	1%	20%	2%	22%	5%
grade 7 events	17538	16091	13170	17330	12671	18922
	85%	84%	42%	83%	51%	76%

2.2 Compared Parameters

Parameter	Planned	Actual	Parameter	Planned	Actual
Instrument	ACIS	ACIS	Obspar format version number	6	6
Detector	ACIS-235678	ACIS-235678	Obspar file type	PREDICTED	ACTUAL
Grating	NONE	NONE	Obspar update status	NONE	UPDATED
Data mode	FAINT	FAINT	On-chip summing requested	N	N
Observation mode	POINTING	POINTING	Subarray requested	1/2	1/2
Pointing RA	201.443374	201.4707061299322	Subarray start row	0	257
Pointing Dec	-39.361847	-39.34485968520242	Subarray row count	1024	512
Pointing Roll	7.829276	8.003229734470944	Alternating exposures requested	N	N
SIM focus pos (mm)	-0.684267	-0.6828225247311905	Primary exposure time	0.000000	1.8
SIM defocus (mm)	0	0.001444936568705701			
SIM translation stage pos (mm)	-190.132523	-190.1400660498719			
SIM translation stage offset (mm)	0	0.00754346686406393			
Observation start time	134672971.184000	134671883.82776			
Observation start date	2002-04-08T17:08:27	2002-04-08T16:51:23			
Observation end time	134677971.184000	134678369.51552			
Observation end date	2002-04-08T18:31:47	2002-04-08T18:39:29			
Read mode	TIMED	TIMED			

2.3 Aspect



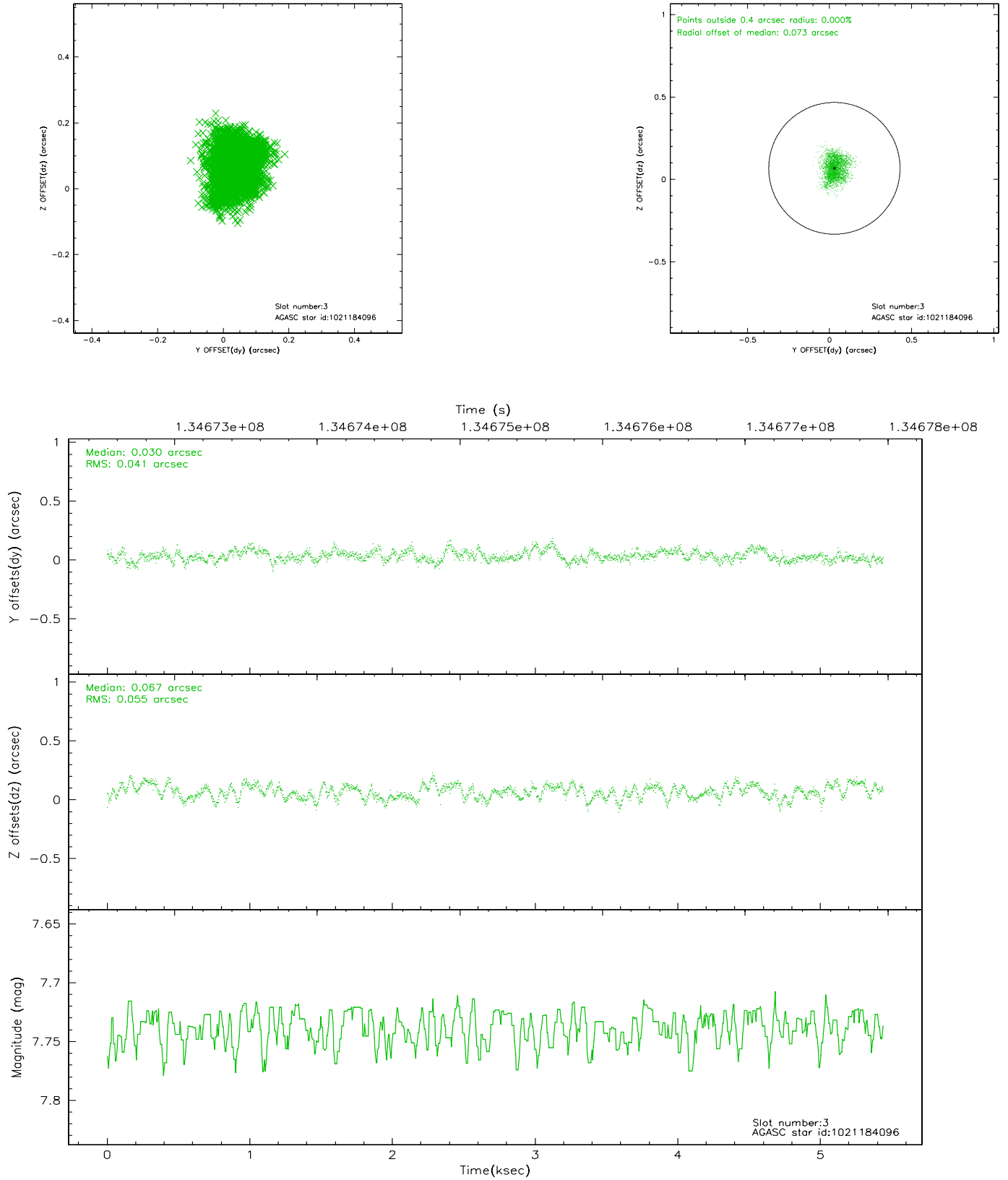


Slot Statistics

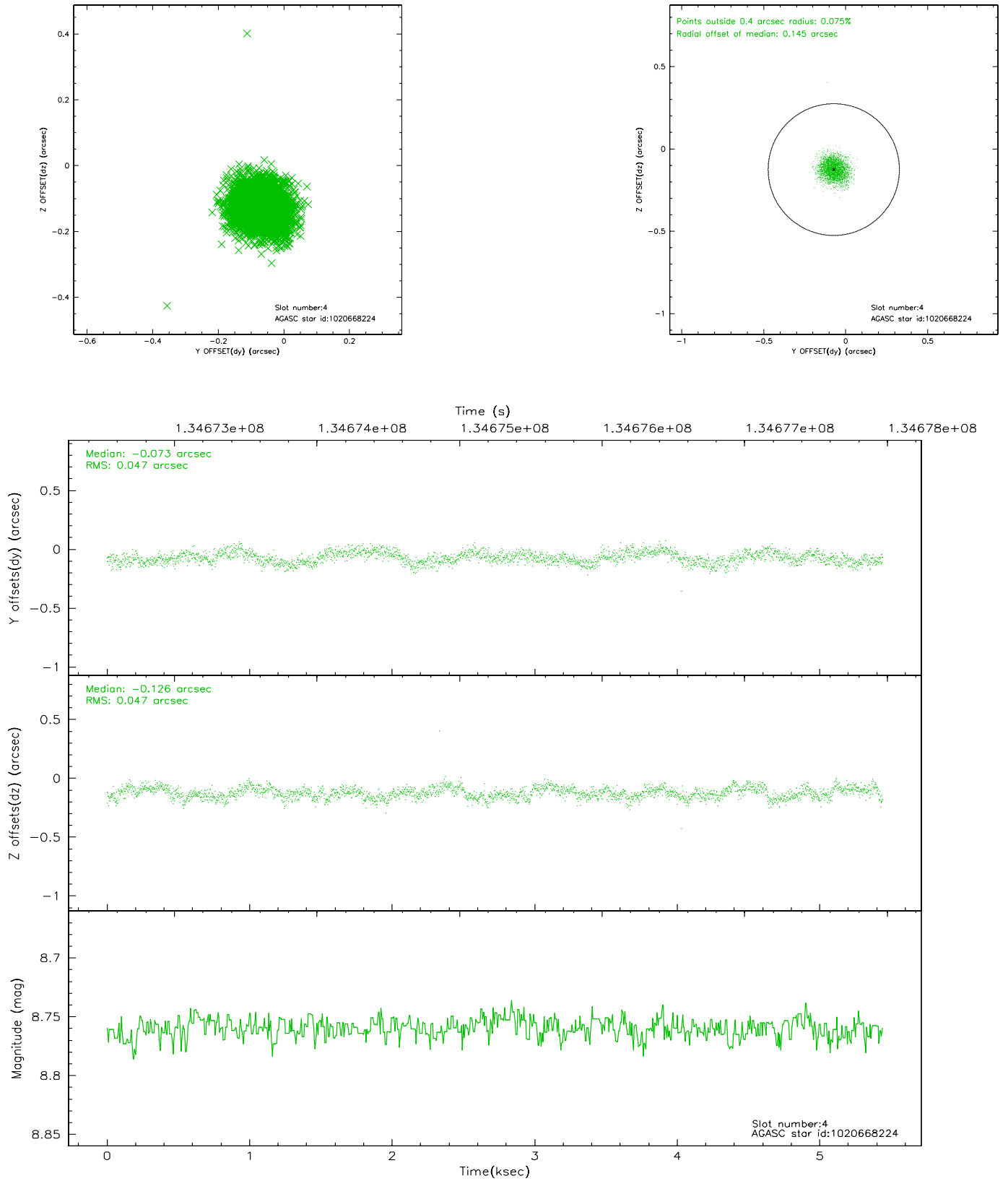
slot	status	id	mag	n_pts	med_dy	med_dz	dr1	dr2	ra	dec	mean_y	mean_z
0	FID	ACIS-S-2	7.11	1327	-0.039	0.022	0.007	0.011	0.000000	0.000000	-754.45	-1727.41
1	FID	ACIS-S-4	7.21	1327	-0.048	0.013	0.005	0.008	0.000000	0.000000	2158.29	179.98
2	FID	ACIS-S-5	7.24	1328	0.056	-0.026	0.007	0.011	0.000000	0.000000	-1805.81	174.80
3	GUIDE	1021184096	7.74	2655	0.030	0.067	0.075	0.118	200.846796	-39.627951	-1768.28	-729.66
4	GUIDE	1020668224	8.76	2655	-0.073	-0.126	0.071	0.111	201.999569	-39.291136	1570.05	35.82
5	GUIDE	1021191568	8.61	2654	0.000	0.069	0.096	0.143	202.374064	-39.670534	2404.07	-1465.44
6	GUIDE	1021188224	9.84	2654	0.036	0.025	0.154	0.248	202.338489	-39.717656	2282.15	-1619.46
7	GUIDE	1020674984	9.44	2654	0.009	-0.045	0.112	0.178	201.228908	-38.866476	-350.53	1846.86

2.4 Star Slots

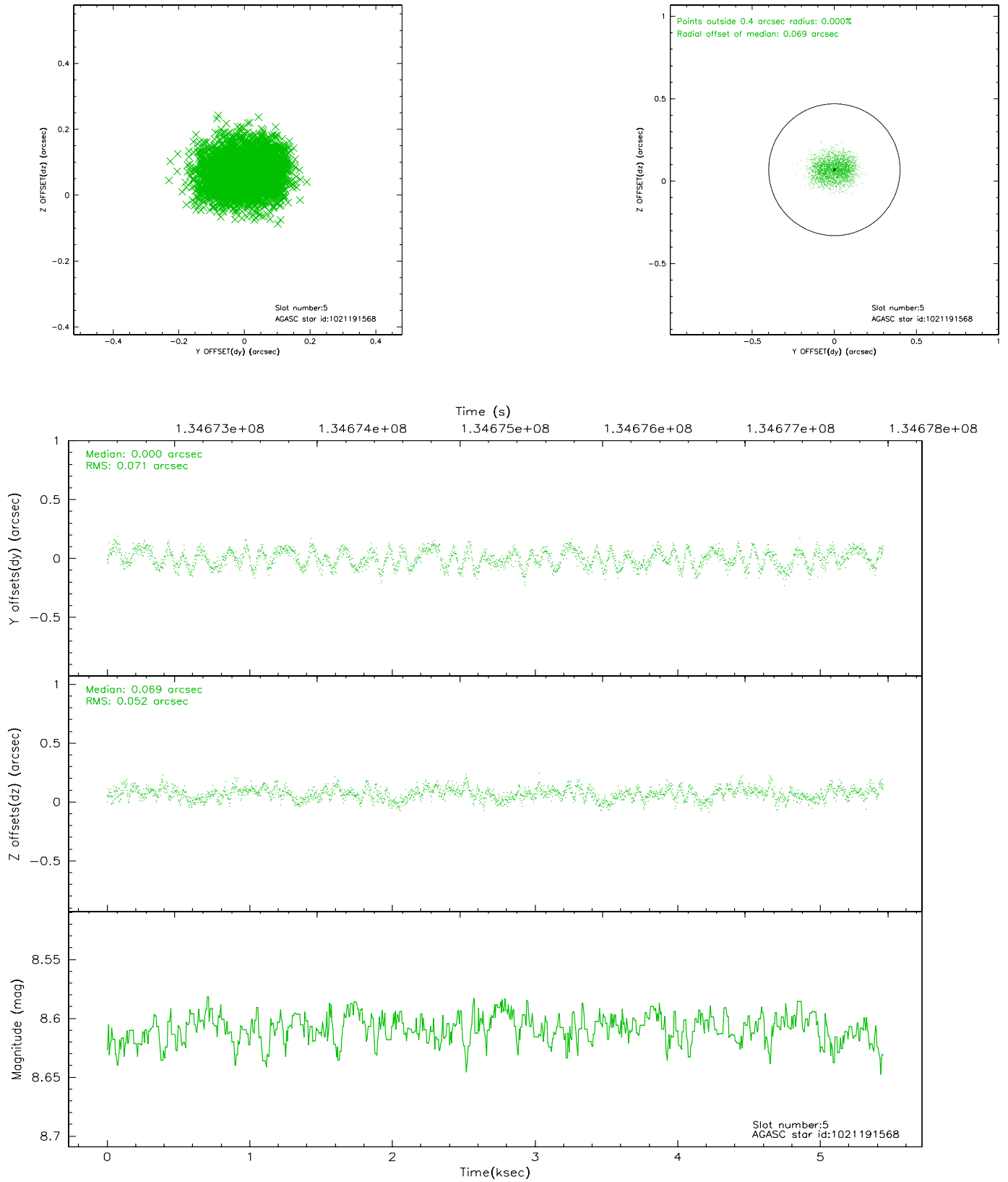
2.4.1 Slot 3



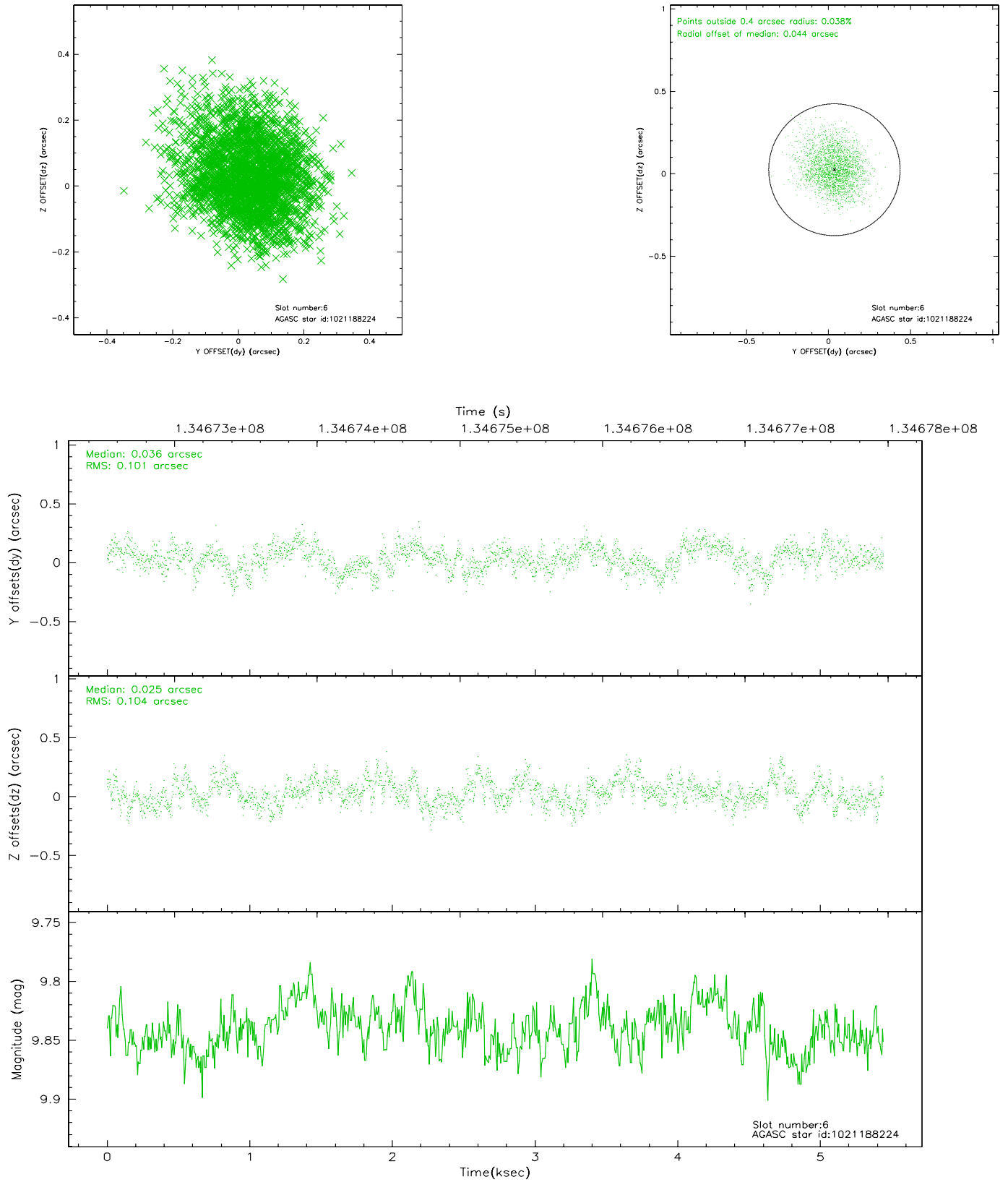
2.4.2 Slot 4



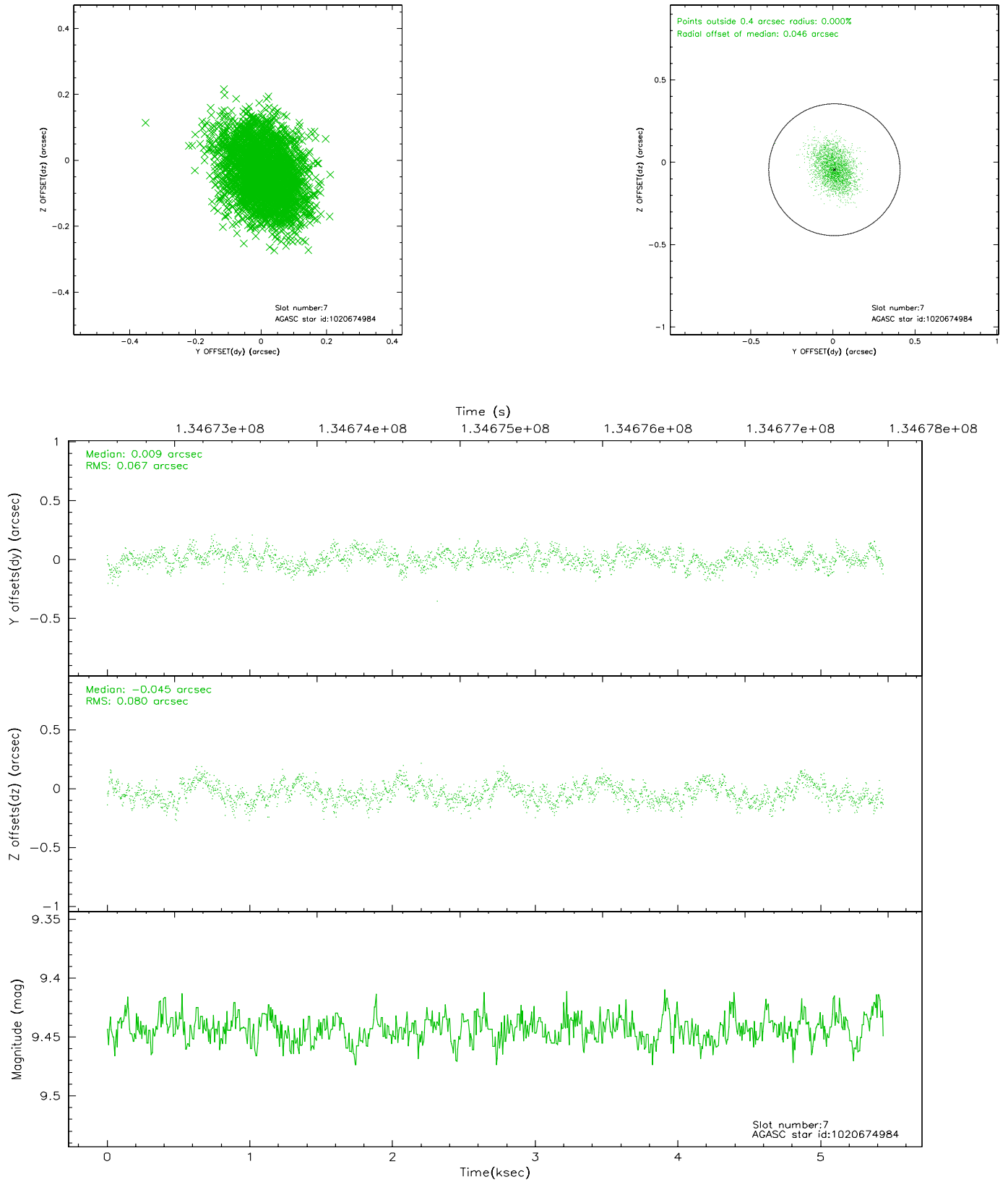
2.4.3 Slot 5



2.4.4 Slot 6

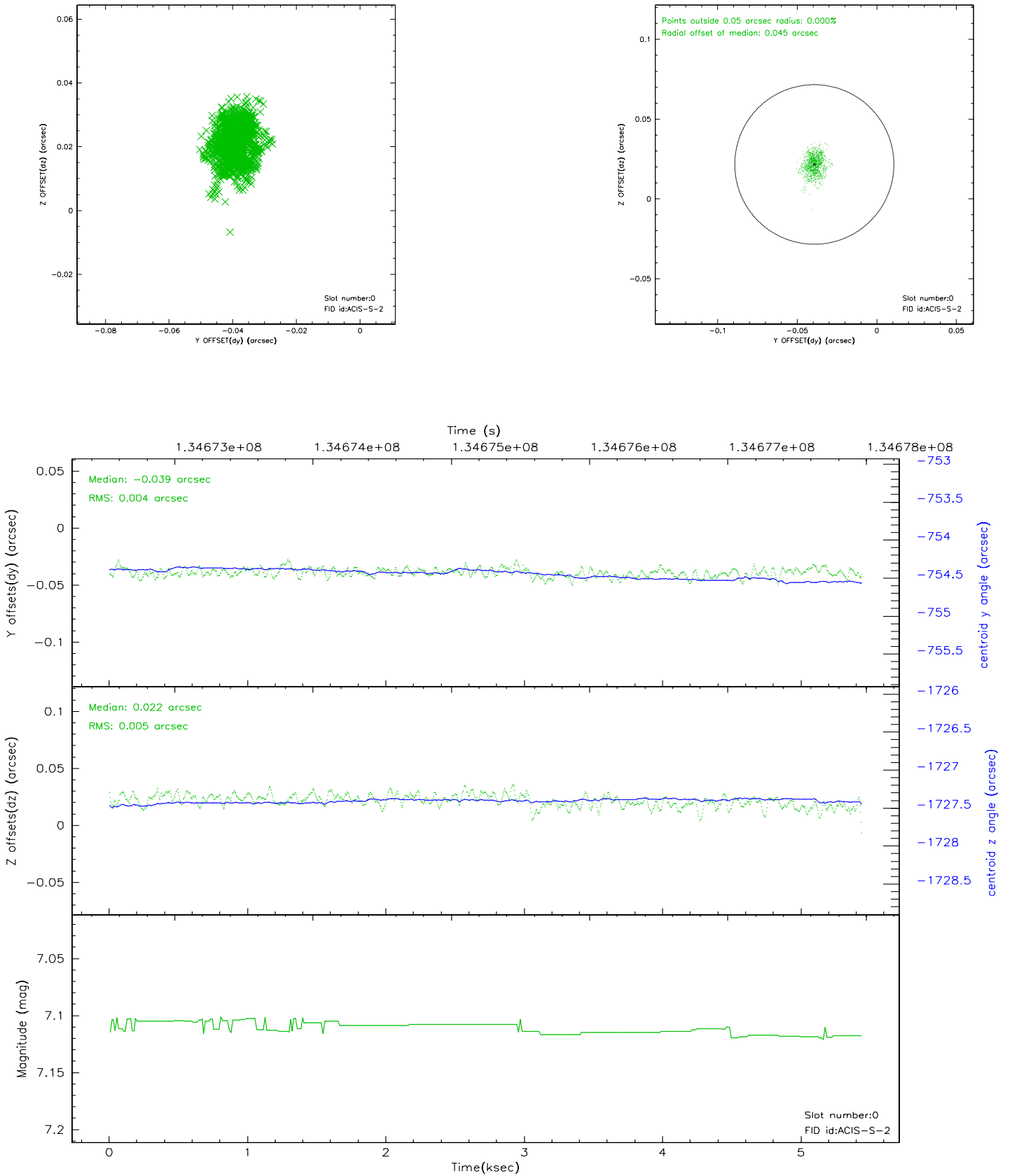


2.4.5 Slot 7

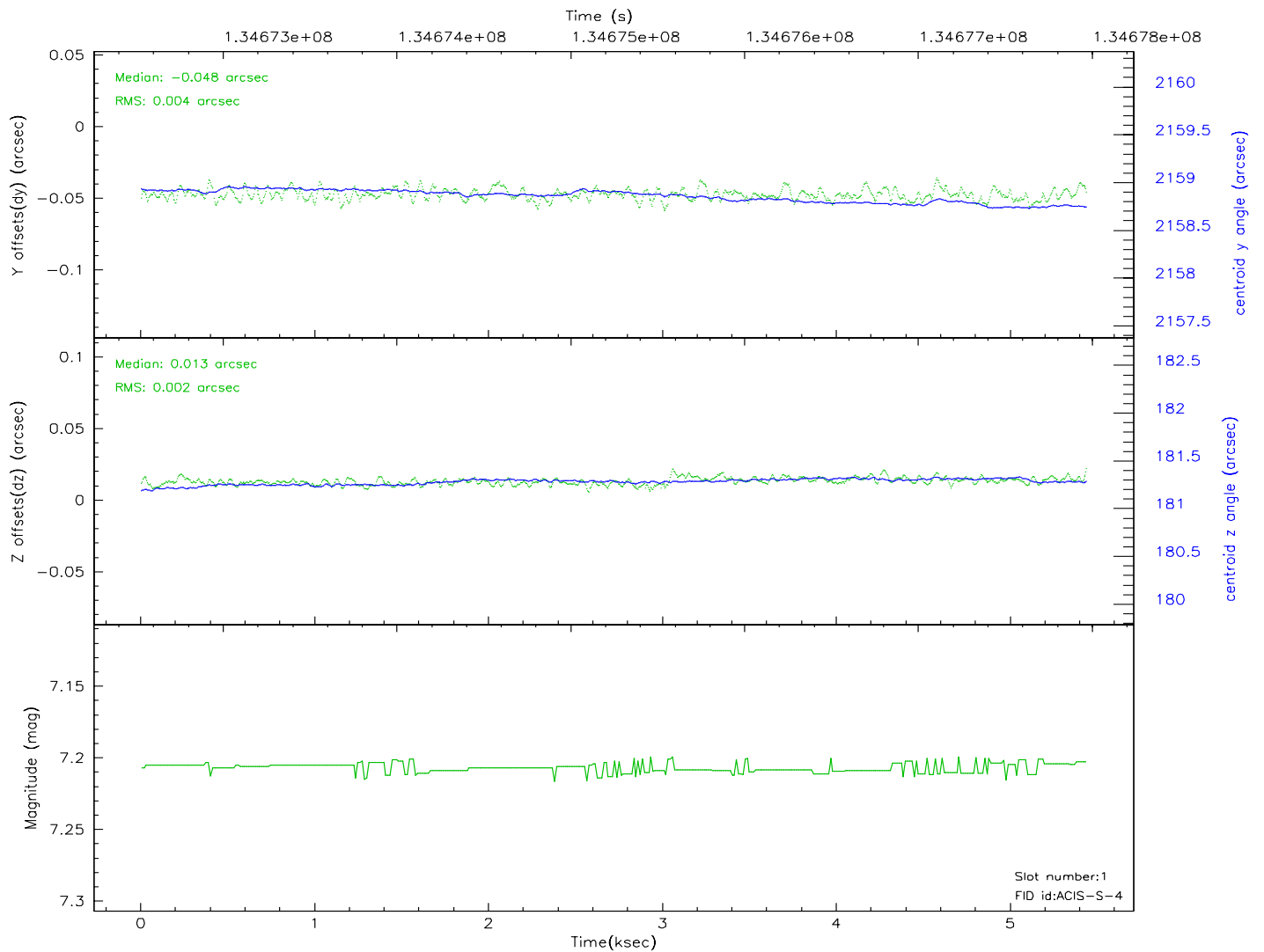
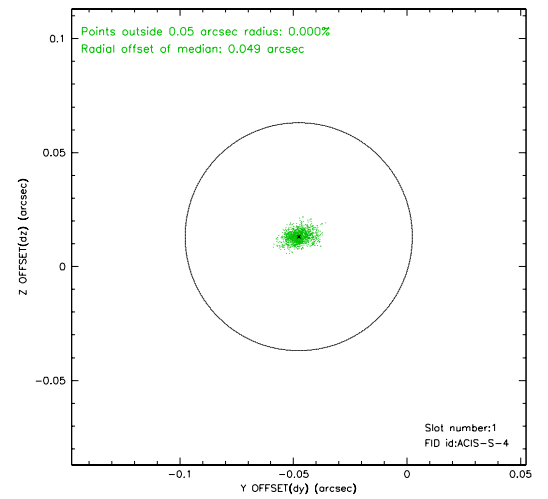
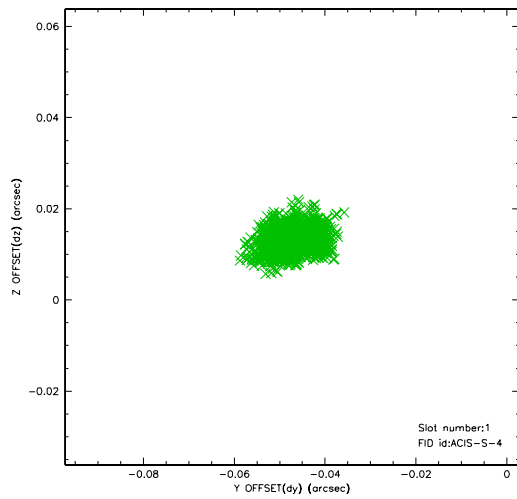


2.5 FID Slots

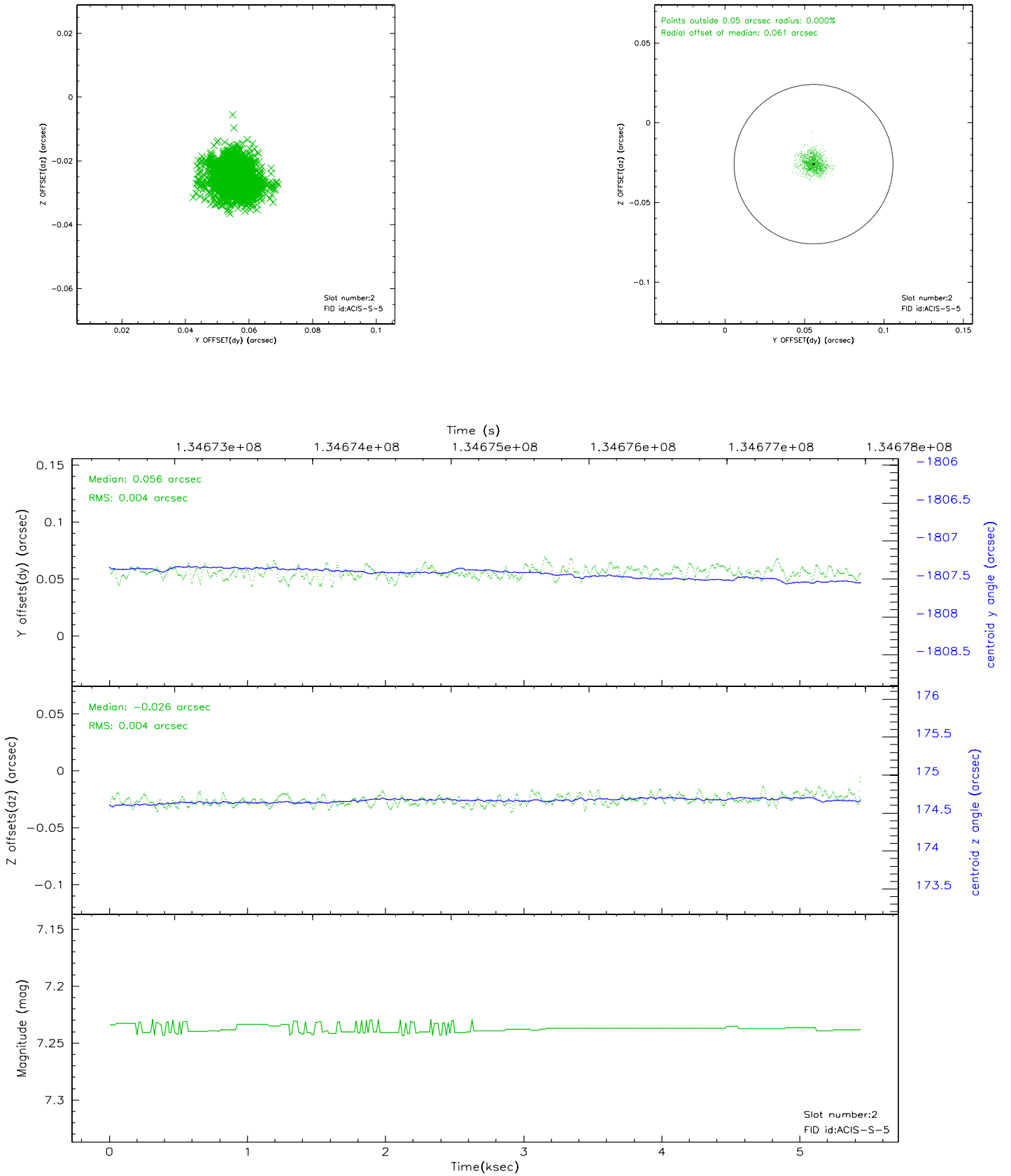
2.5.1 Slot 0



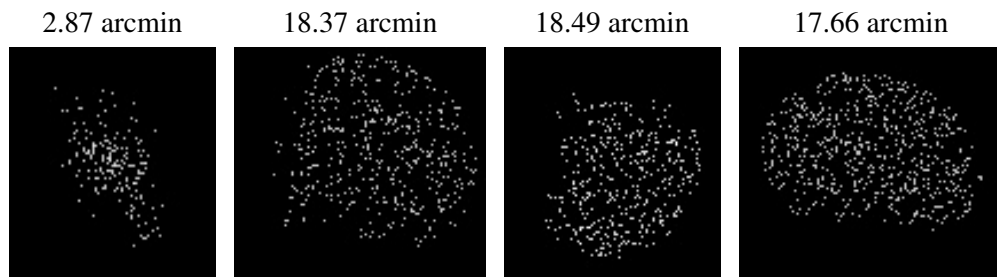
2.5.2 Slot 1



2.5.3 Slot 2



3 Point Sources



A Summary

A.1 Status

V&V Scientist	Jen Lauer
V&V Date (YYYY-MM-DD)	2006.09.10
V&V Edition	1
V&V Disposition and Status	OK
V&V Charge Time	5.401

A.2 Comments