

V&V Reference Report

L2 ASCDS Version : 7.6.9

Observation 3276 - L2 Version 001
Chandra X-Ray Center

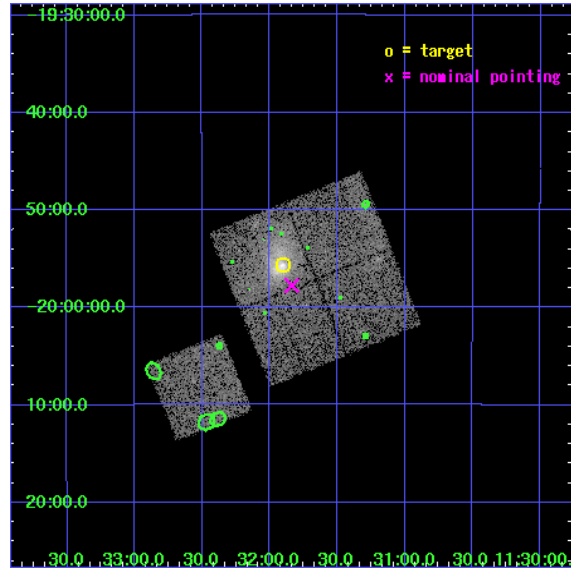
L2 Processing Date : Sep 19 2006

Contents

1	Front	2
2	OBI	3
2.1	OBI	3
2.1.1	Images	3
2.1.2	Bias	3
2.1.3	Parameters	4
2.1.4	Events	4
2.2	Compared Parameters	5
2.3	Aspect	6
2.4	Star Slots	9
2.4.1	Slot 3	9
2.4.2	Slot 4	10
2.4.3	Slot 5	11
2.4.4	Slot 6	12
2.4.5	Slot 7	13
2.5	FID Slots	14
2.5.1	Slot 0	14
2.5.2	Slot 1	15
2.5.3	Slot 2	16
3	Point Sources	17
A	Summary	18
A.1	Status	18
A.2	Comments	18

1 Front

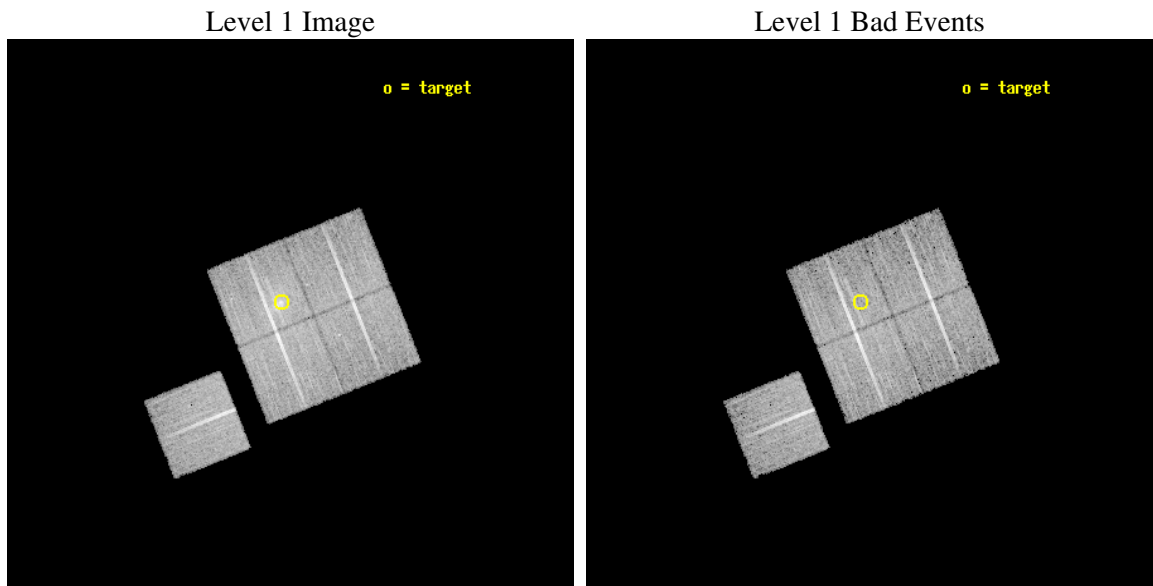
seq_num	800276
obs_id	3276
title	MACS: THE X-RAY PROPERTIES OF THE MOST MASSIVE GALAXY CLUSTERS AT $Z>0.3$
observer	Dr Harald Ebeling
object	MACSJ1131.8-1955
dtcycle	0
cycle	P
ra_targ	172.975833
dec_targ	-19.928333
ra_nom	172.95902918379
dec_nom	-19.962592187047
roll_nom	248.17007572381
revision	2
ontime	14092.599972904
livetime	13908.469779437
ontime0	14083.177151978
ontime1	14092.599972904
ontime2	14089.459012687
ontime3	14092.599972904
ontime6	14089.459012687
l2events	44900



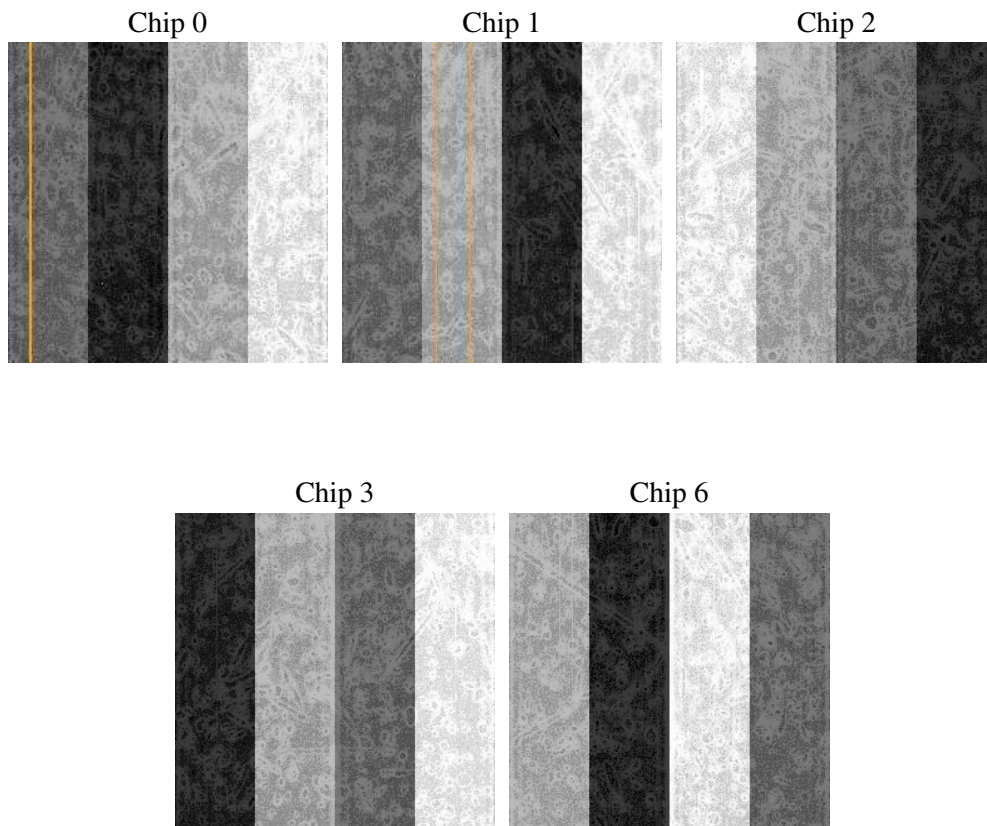
2 OBI

2.1 OBI

2.1.1 Images



2.1.2 Bias



2.1.3 Parameters

obi_num	0
ascdsver	7.6.9
caldsver	3.2.3
date	2006-09-19T13:31:02
revision	2

sched_exp_time	14322.290000
ontime	14099.955126703
ontime0	14090.532305777
ontime1	14099.955126703
ontime2	14096.814166486
ontime3	14099.955126703
ontime6	14096.814166486
l1events	390100

2.1.4 Events

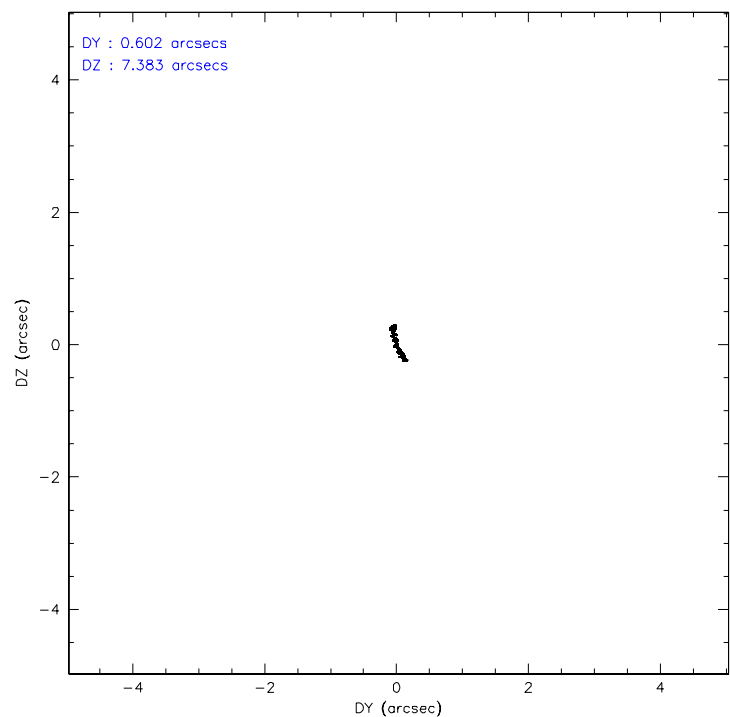
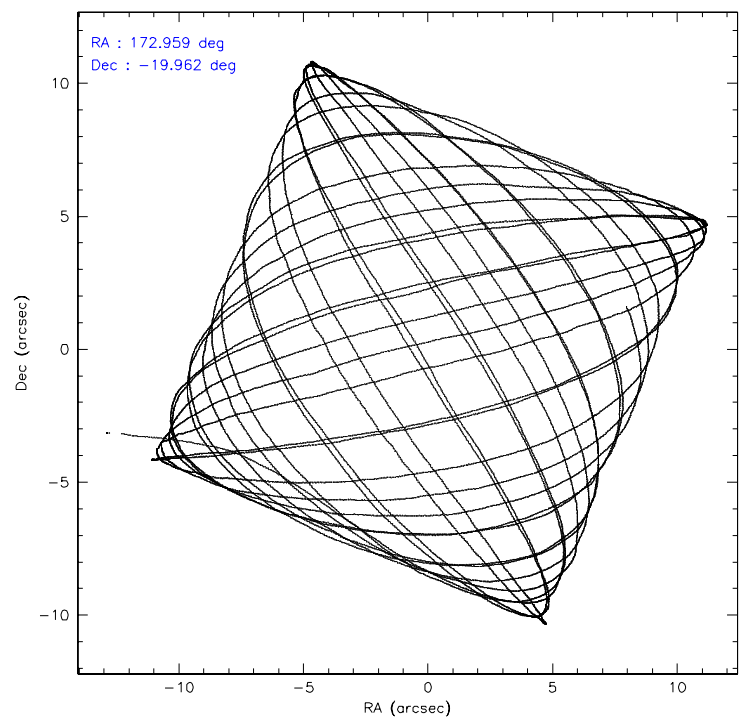
	ccd 0	ccd 1	ccd 2	ccd 3	ccd 6
level 1 events	71324	72138	83194	86019	77425
rejected events	62967	62548	74875	68979	68747
rejected %	88%	86%	90%	80%	88%

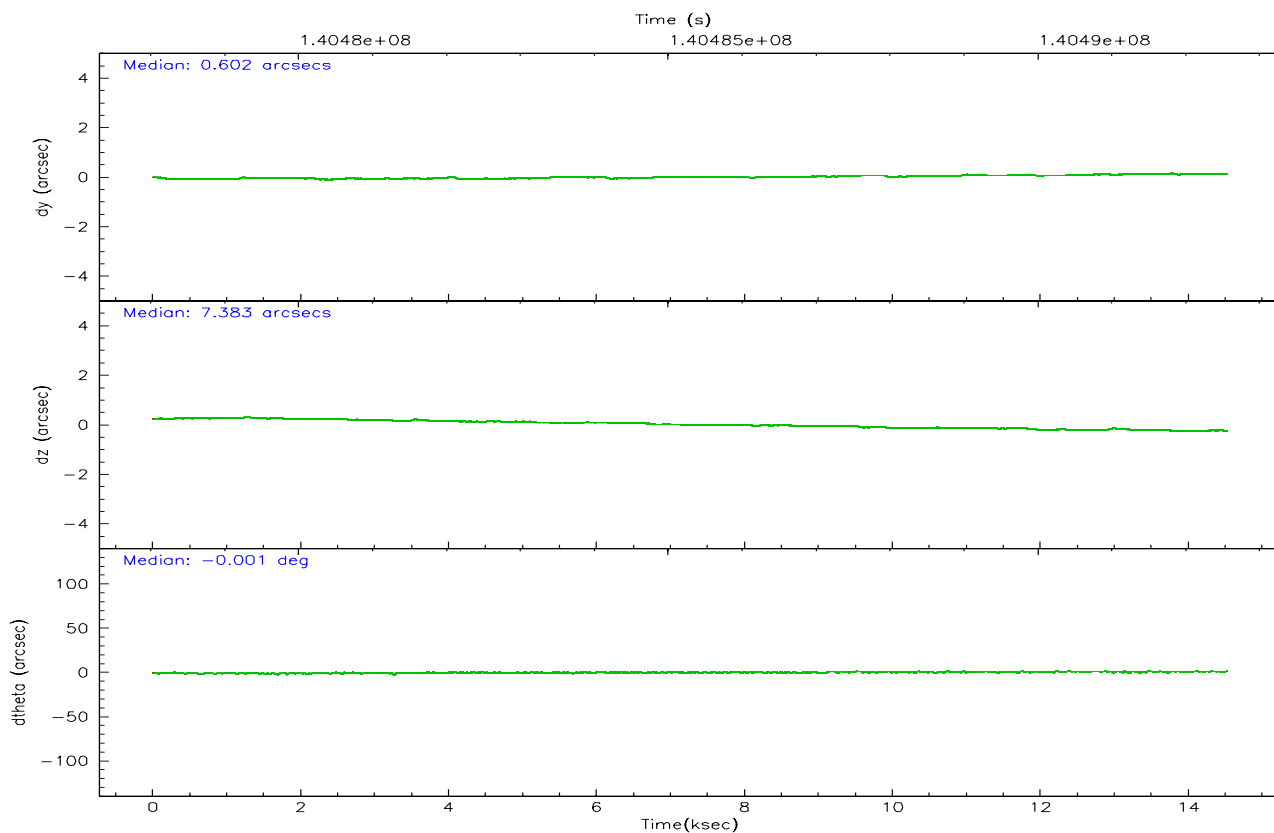
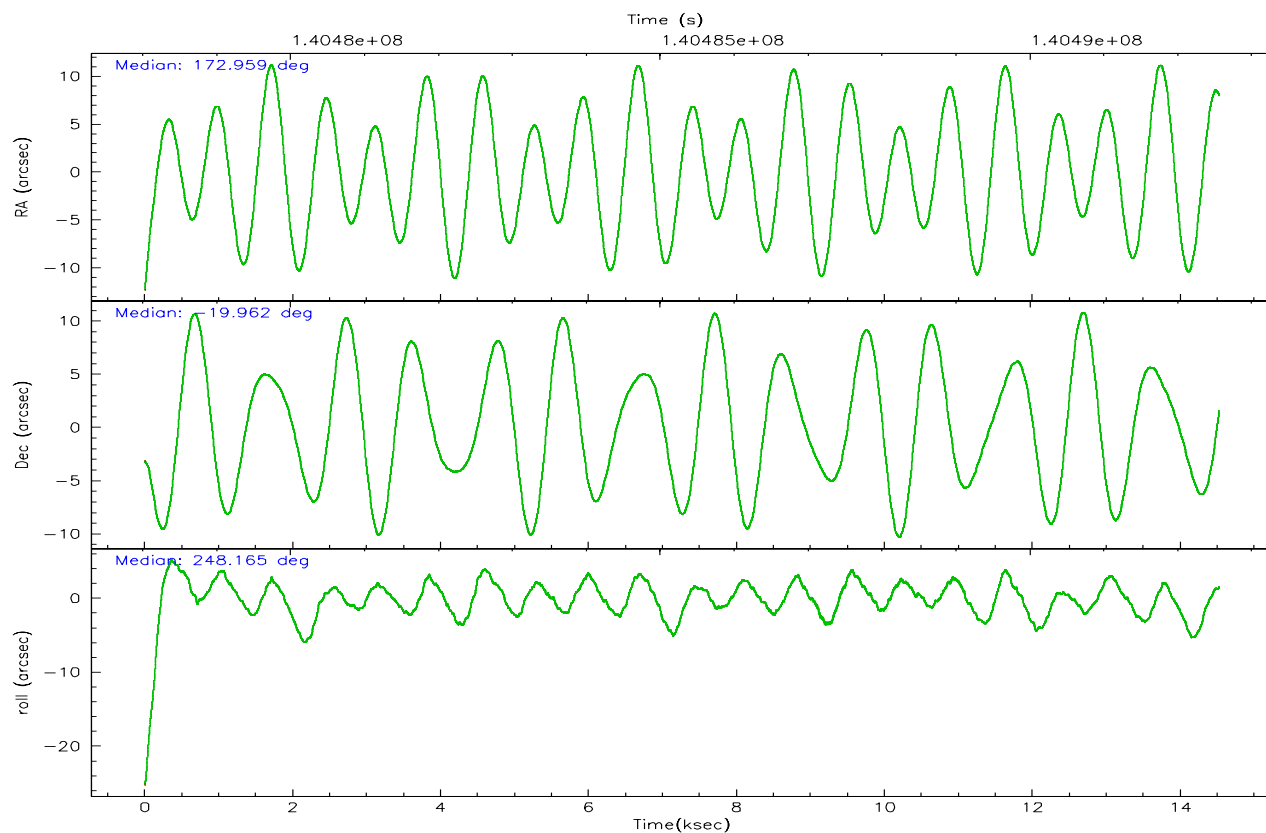
	ccd 0	ccd 1	ccd 2	ccd 3	ccd 6
grade 0 events	3252	3973	3358	10624	3538
	4%	5%	4%	12%	4%
grade 1 events	41	33	31	61	32
	0%	0%	0%	0%	0%
grade 2 events	1836	1896	1802	2527	1679
	2%	2%	2%	2%	2%
grade 3 events	926	1037	832	1043	906
	1%	1%	1%	1%	1%
grade 4 events	852	972	877	1115	895
	1%	1%	1%	1%	1%
grade 5 events	2583	2844	2259	2800	2798
	3%	3%	2%	3%	3%
grade 6 events	1496	1714	1454	1740	1665
	2%	2%	1%	2%	2%
grade 7 events	60338	59669	72581	66109	65912
	84%	82%	87%	76%	85%

2.2 Compared Parameters

Parameter	Planned	Actual	Parameter	Planned	Actual
Instrument	ACIS	ACIS	Obspar format version number	6	6
Detector	ACIS-01236	ACIS-01236	Obspar file type	PREDICTED	ACTUAL
Grating	NONE	NONE	Obspar update status	NONE	UPDATED
Data mode	VFAINT	VFAINT	Number of optional ACIS chips dropped	0	0
Observation mode	POINTING	POINTING	On-chip summing requested	N	N
Pointing RA	172.954793	172.9590291837901	Subarray requested	NONE	NONE
Pointing Dec	-19.935433	-19.962592187047	Alternating exposures requested	N	N
Pointing Roll	247.959951	248.1700757238117	Primary exposure time	0.000000	3.1
SIM focus pos (mm)	-0.782348	-0.7809083437167272			
SIM defocus (mm)	0	0.001439871863259334			
SIM translation stage pos (mm)	-227.742463	-227.734108438797			
SIM translation stage offset (mm)	-5.85	-5.858344564132665			
Observation start time	140478237.184000	140477511.22698			
Observation start date	2002-06-14T21:42:53	2002-06-14T21:31:51			
Observation end time	140492560.184000	140492874.44011			
Observation end date	2002-06-15T01:41:36	2002-06-15T01:47:54			
Read mode	TIMED	TIMED			

2.3 Aspect



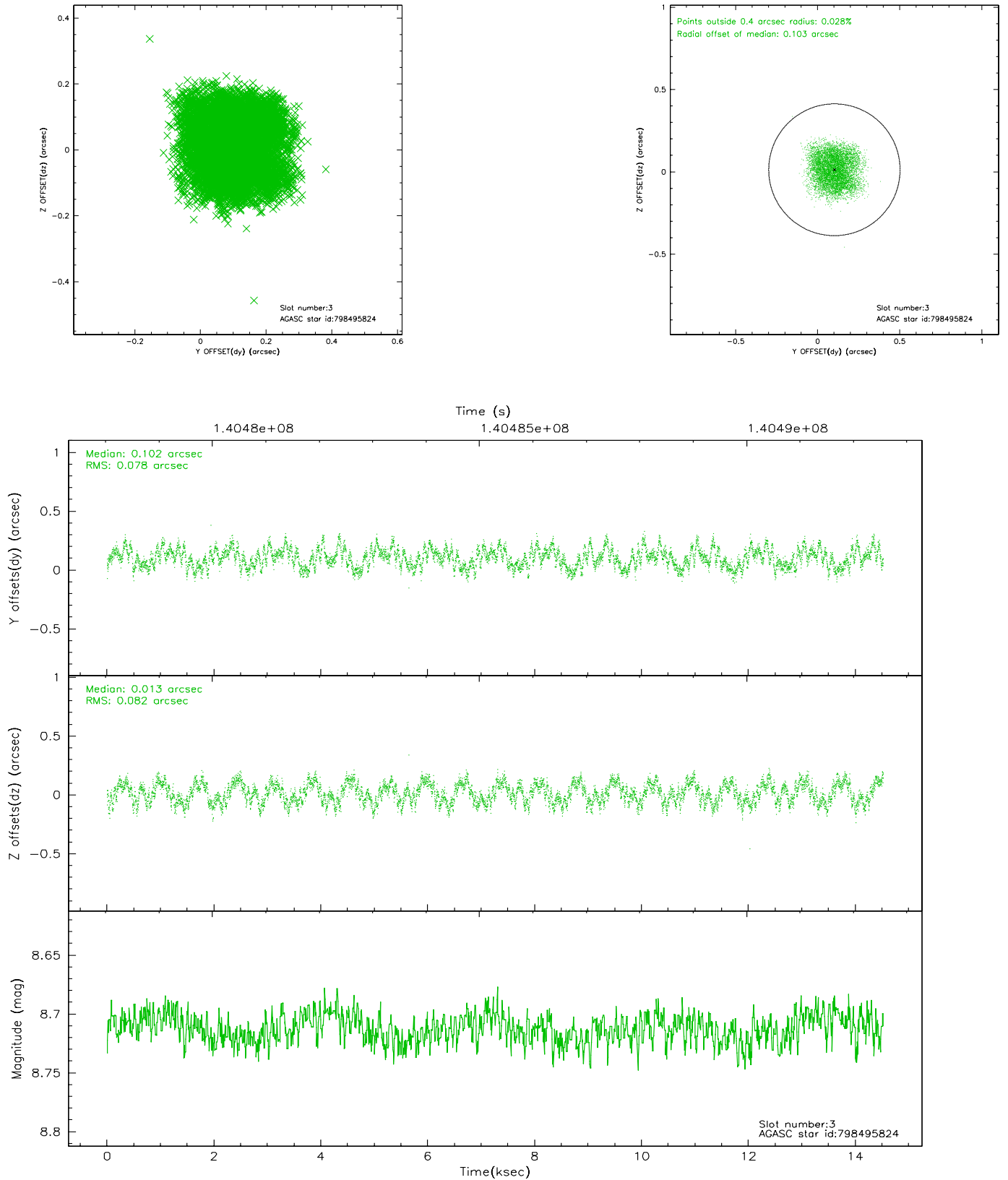


Slot Statistics

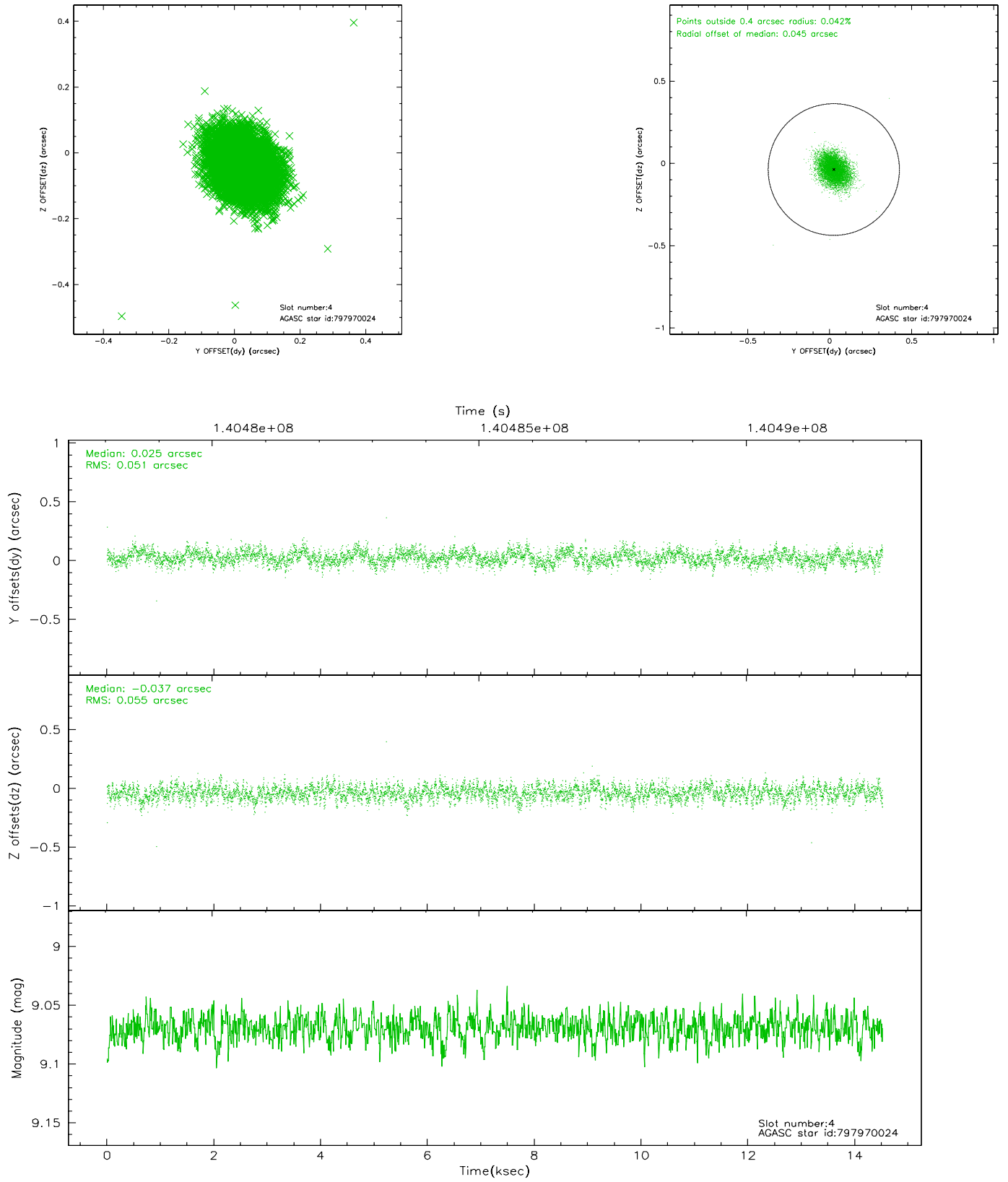
slot	status	id	mag	n_pts	med_dy	med_dz	dr1	dr2	ra	dec	mean_y	mean_z
0	FID	ACIS-I-1	7.24	3542	0.019	0.045	0.010	0.017	0.000000	0.000000	939.14	-951.02
1	FID	ACIS-I-5	7.23	3542	-0.133	0.057	0.008	0.013	0.000000	0.000000	-1808.91	946.33
2	FID	ACIS-I-6	7.26	3543	0.023	-0.031	0.009	0.013	0.000000	0.000000	404.38	1591.08
3	GUIDE	798495824	8.71	7085	0.102	0.013	0.126	0.183	173.403222	-20.546440	1474.60	2227.03
4	GUIDE	797970024	9.07	7086	0.025	-0.037	0.080	0.128	172.716766	-19.832014	-40.62	-886.94
5	GUIDE	798375016	9.29	7082	0.114	-0.041	0.081	0.131	172.536267	-20.217781	1475.73	-929.07
6	GUIDE	797968008	9.37	7081	-0.062	0.110	0.092	0.151	173.274298	-19.815834	-803.00	841.22
7	GUIDE	797970768	9.57	7013	-0.180	-0.039	0.097	0.159	173.312502	-19.484424	-1958.58	515.84

2.4 Star Slots

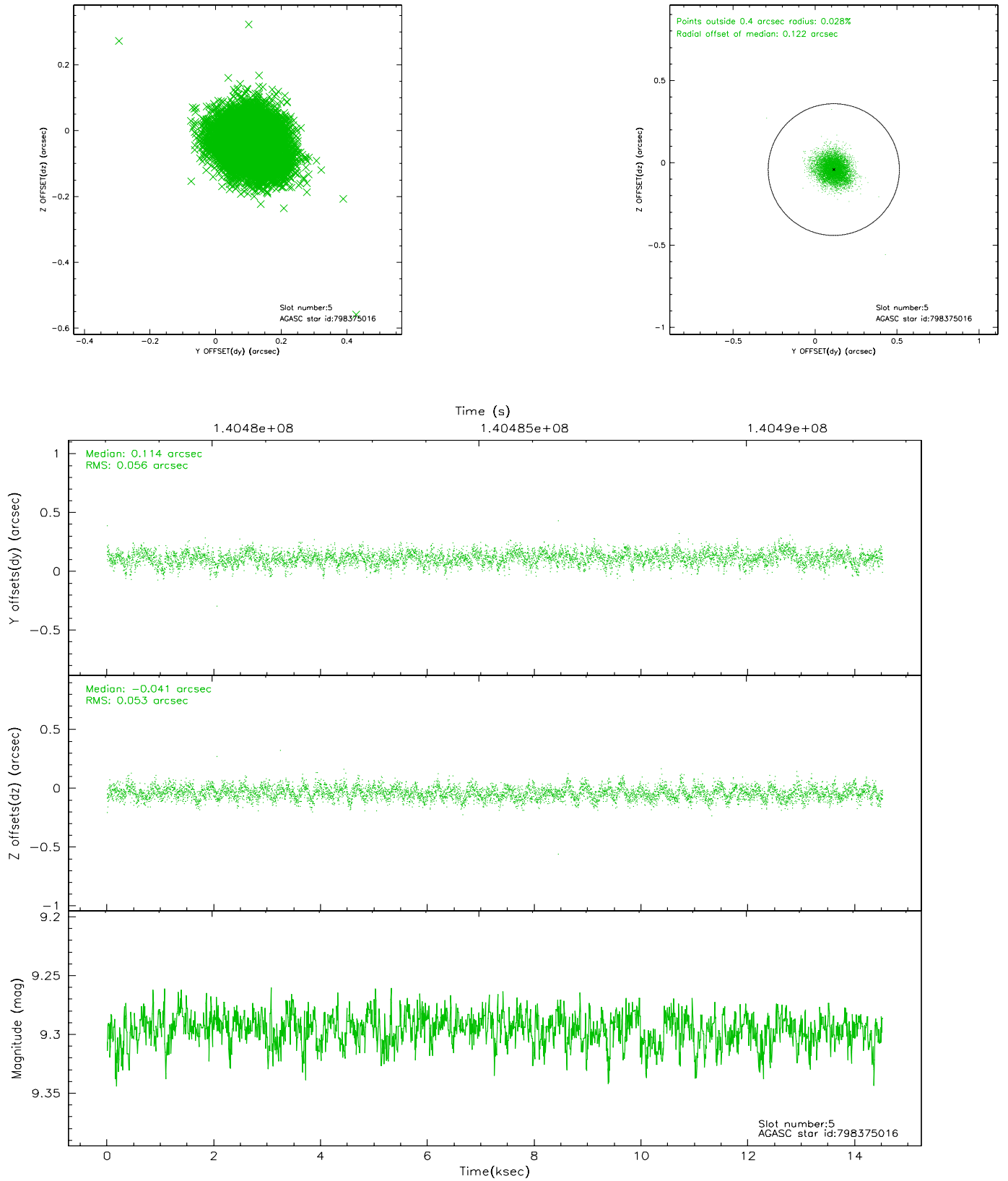
2.4.1 Slot 3



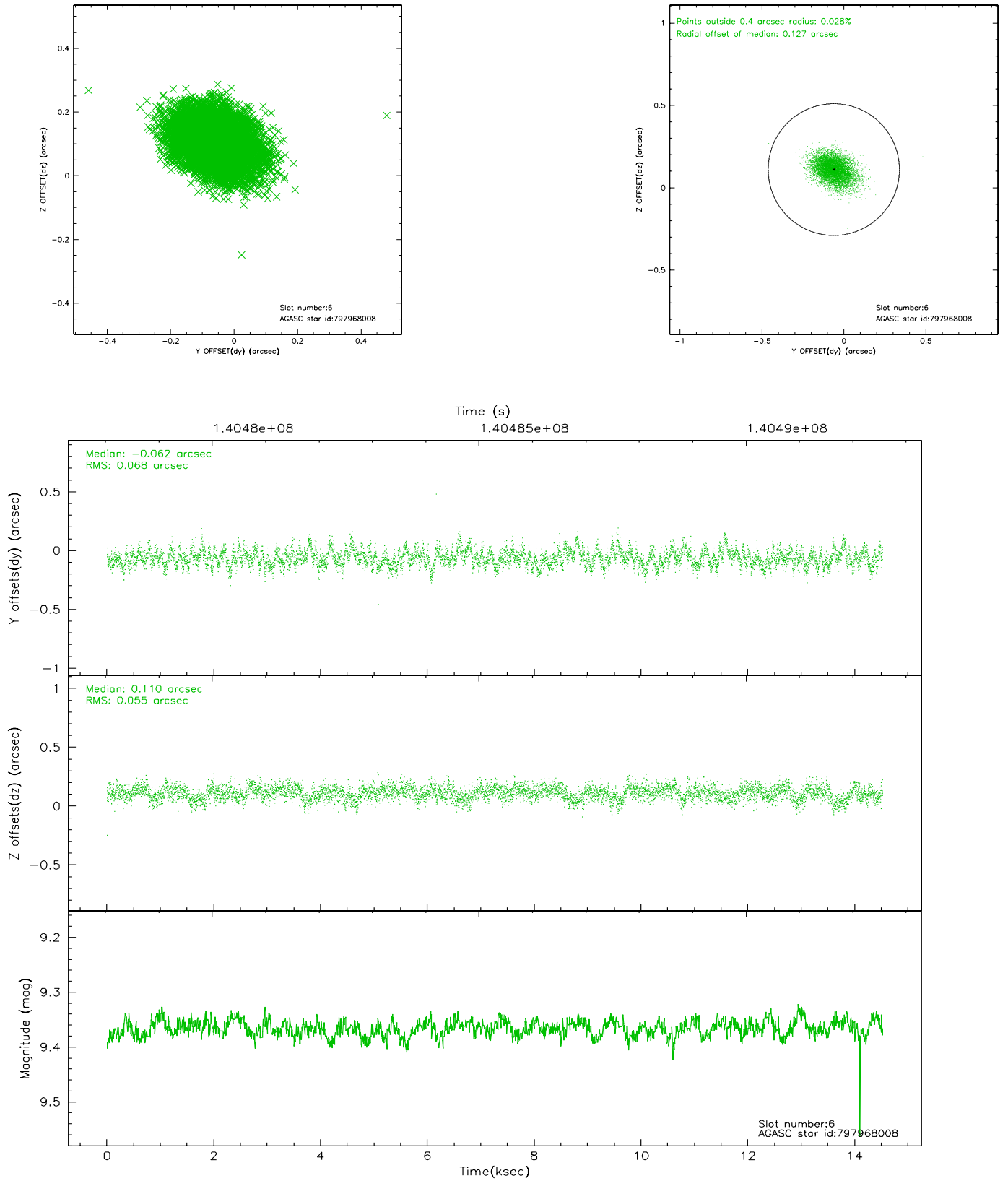
2.4.2 Slot 4



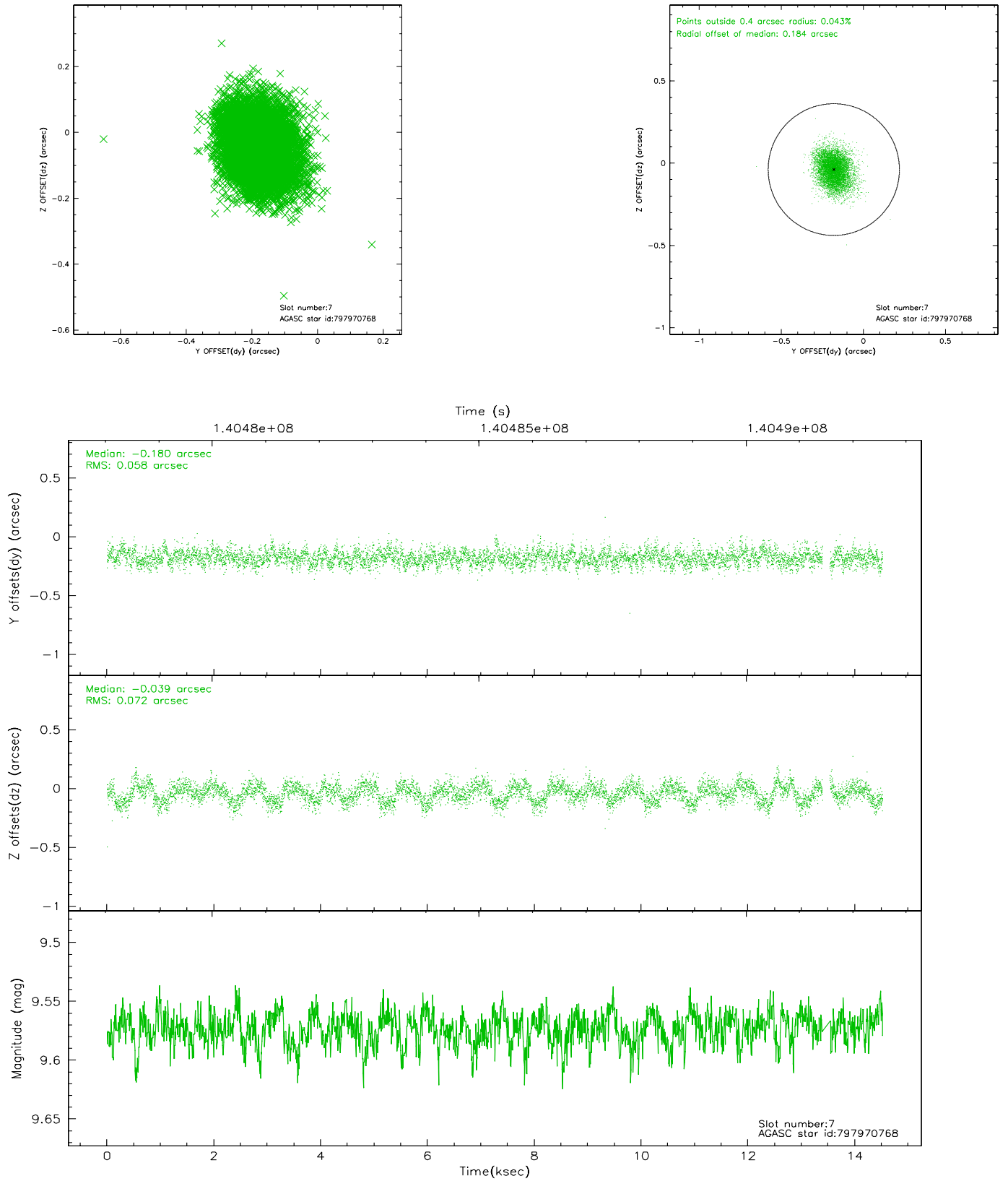
2.4.3 Slot 5



2.4.4 Slot 6

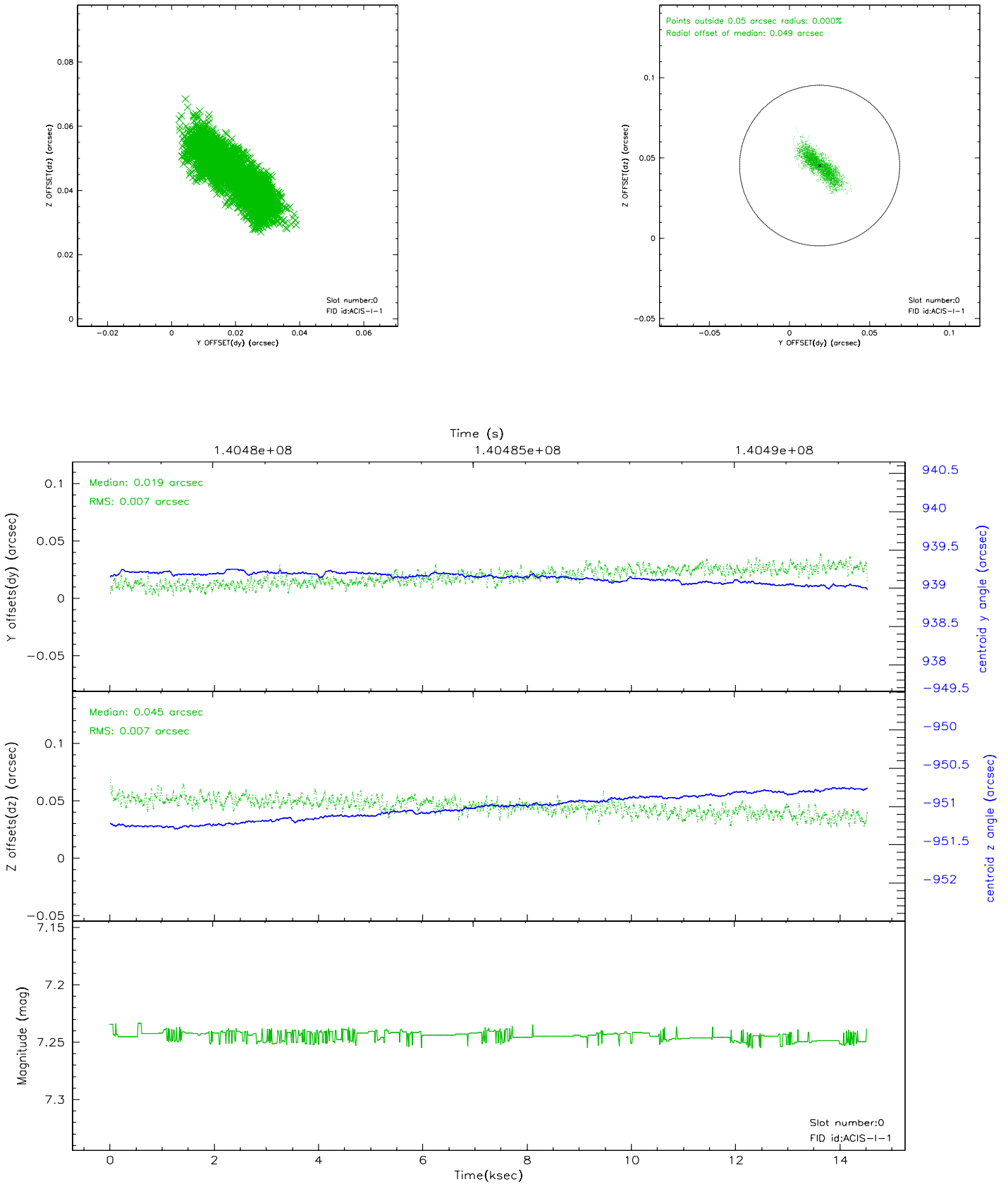


2.4.5 Slot 7

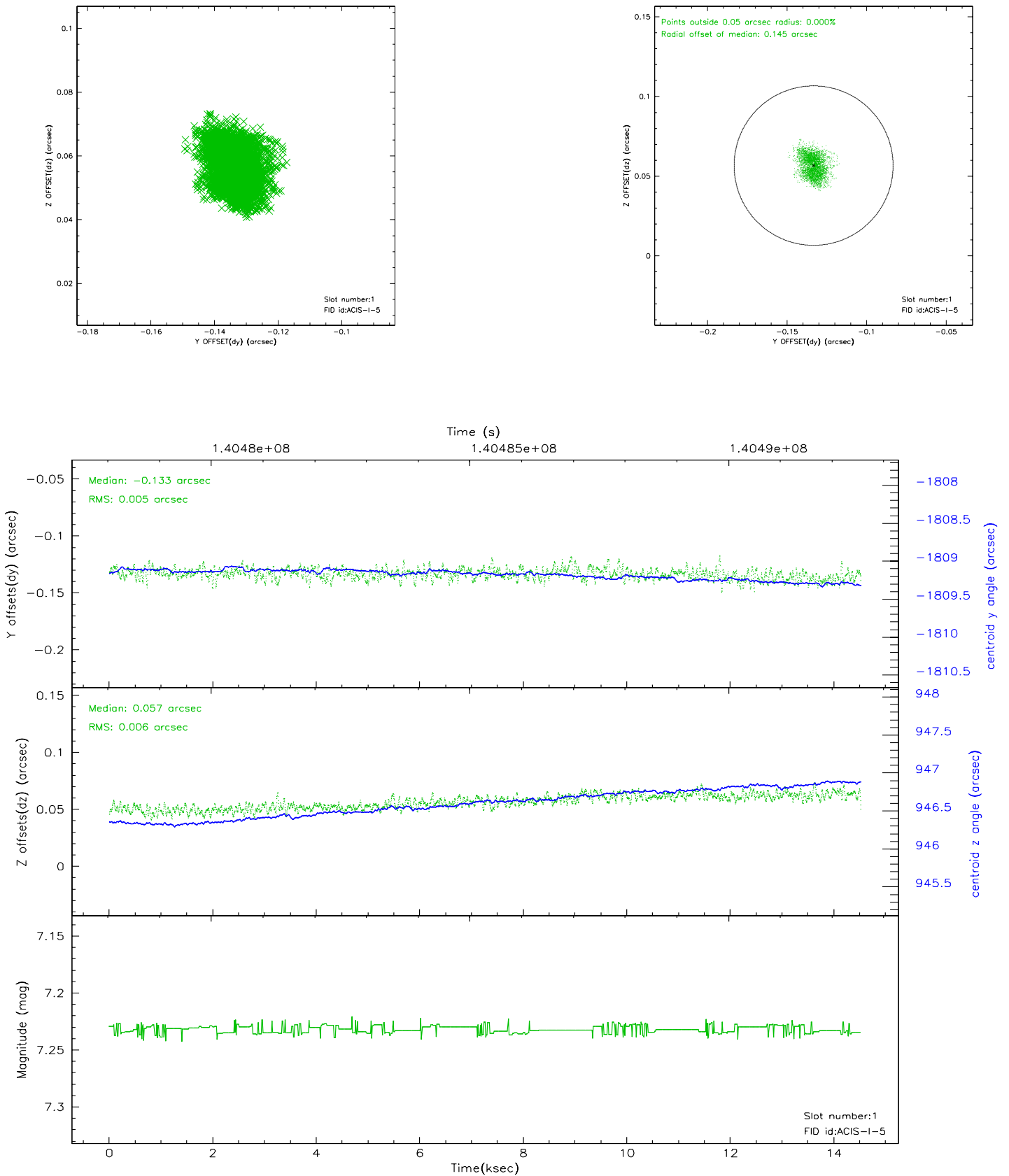


2.5 FID Slots

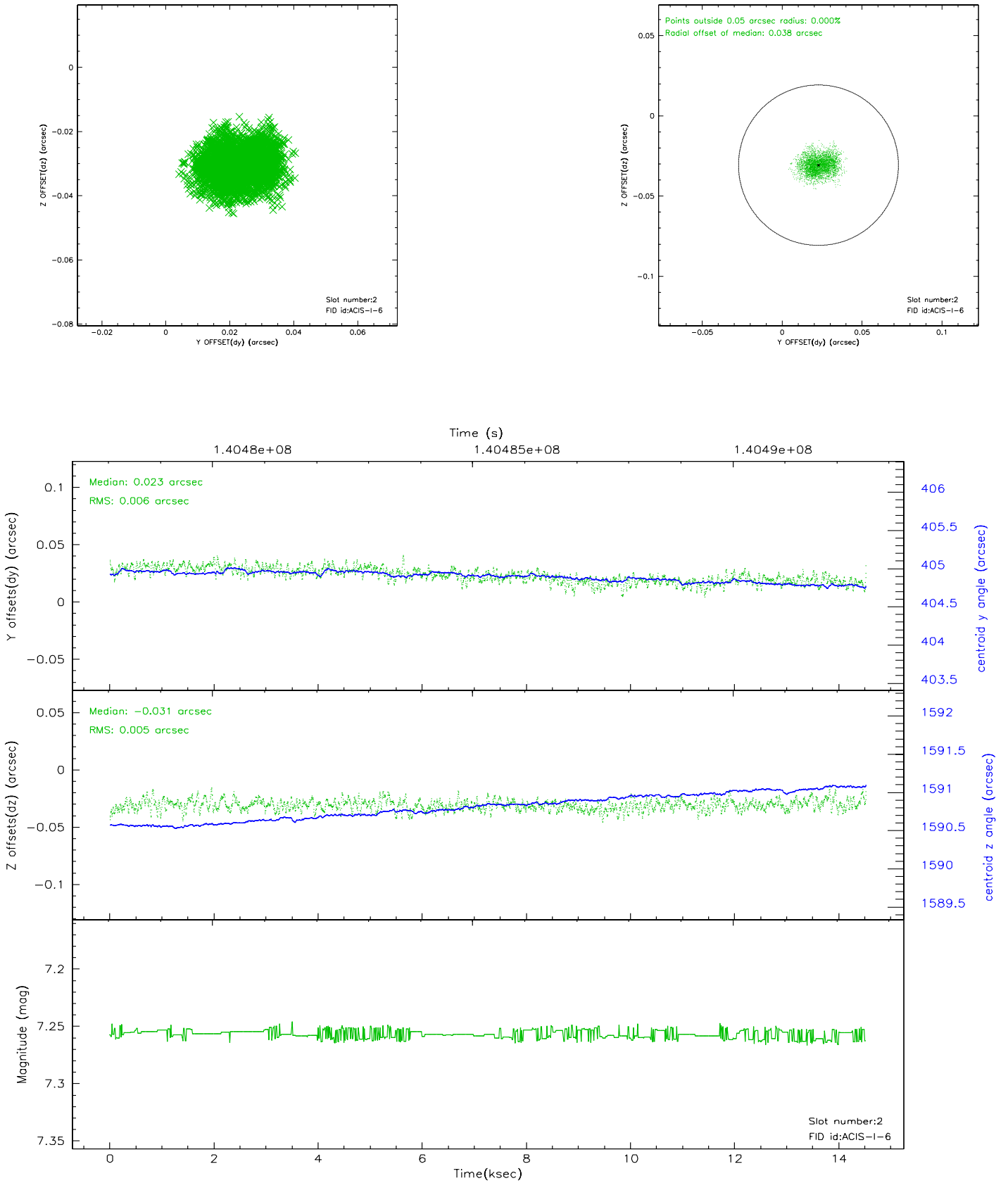
2.5.1 Slot 0



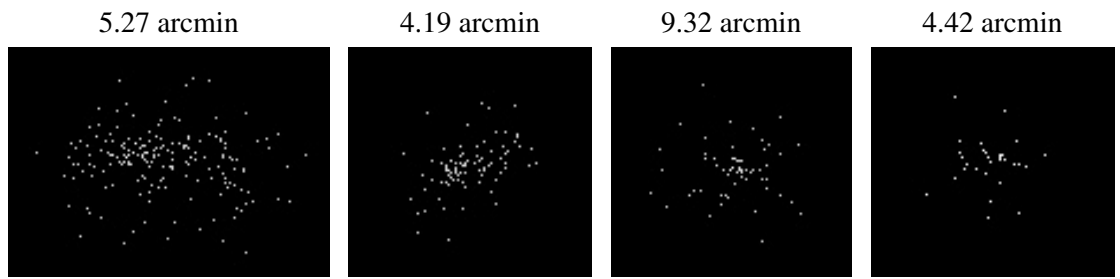
2.5.2 Slot 1



2.5.3 Slot 2



3 Point Sources



A Summary

A.1 Status

V&V Scientist	Jen Lauer
V&V Date (YYYY-MM-DD)	2006.09.19
V&V Edition	1
V&V Disposition and Status	OK
V&V Charge Time	14.095

A.2 Comments