

V&V Reference Report

L2 ASCDS Version : 7.6.9

Observation 3226 - L2 Version 001
Chandra X-Ray Center

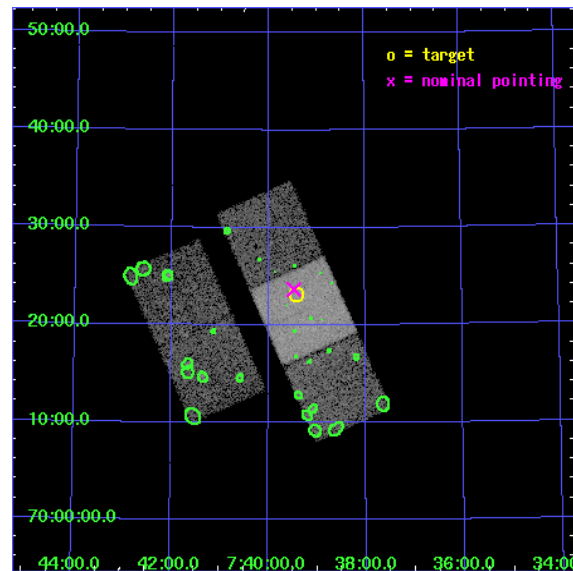
L2 Processing Date : Oct 4 2006

Contents

1	Front	2
2	OBI	3
2.1	OBI	3
2.1.1	Images	3
2.1.2	Bias	3
2.1.3	Parameters	4
2.1.4	Events	4
2.2	Compared Parameters	5
2.3	Aspect	6
2.4	Star Slots	9
2.4.1	Slot 3	9
2.4.2	Slot 4	10
2.4.3	Slot 5	11
2.4.4	Slot 6	12
2.4.5	Slot 7	13
2.5	FID Slots	14
2.5.1	Slot 0	14
2.5.2	Slot 1	15
2.5.3	Slot 2	16
3	Point Sources	17
A	Summary	18
A.1	Status	18
A.2	Comments	18

1 Front

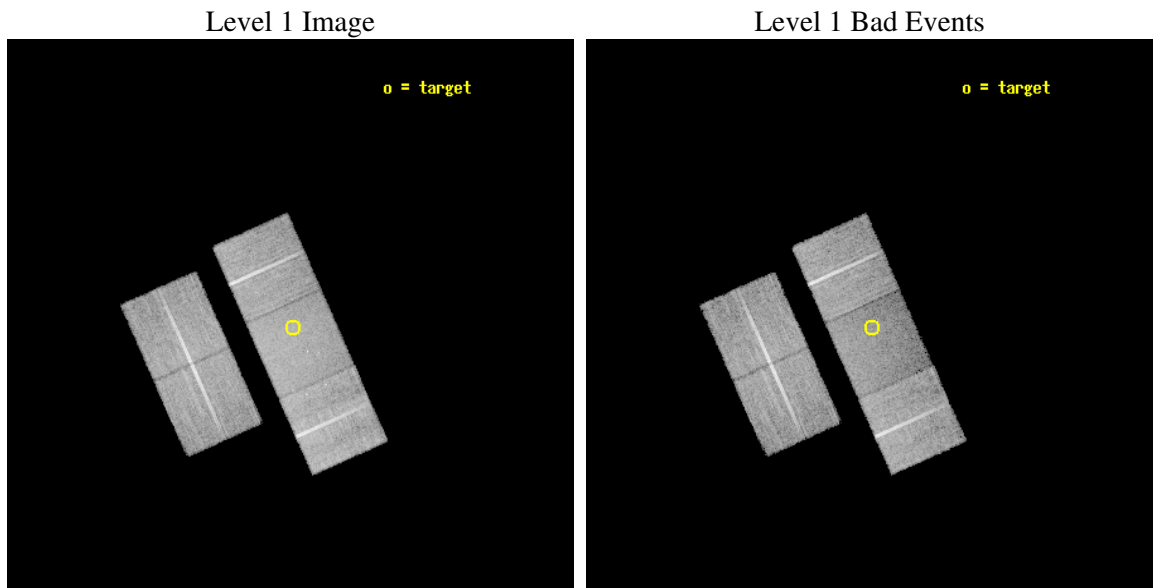
seq_num	800226
obs_id	3226
title	DETECTION OF HIGH REDSHIFT CLUSTER OF GALAXIES AROUND 3CR184
observer	DR. TATEHIRO MIHARA
object	3CR184 CLUSTER
dtcycle	0
cycle	P
ra_targ	114.852083
dec_targ	70.386361
ra_nom	114.86831356022
dec_nom	70.394391845487
roll_nom	65.980318470076
revision	2
ontime	19136.299963206
livetime	18886.270116248
ontime2	19133.159092635
ontime3	19136.299963206
ontime6	19136.299963206
ontime7	19136.299963206
ontime8	19133.158992976
l2events	79893



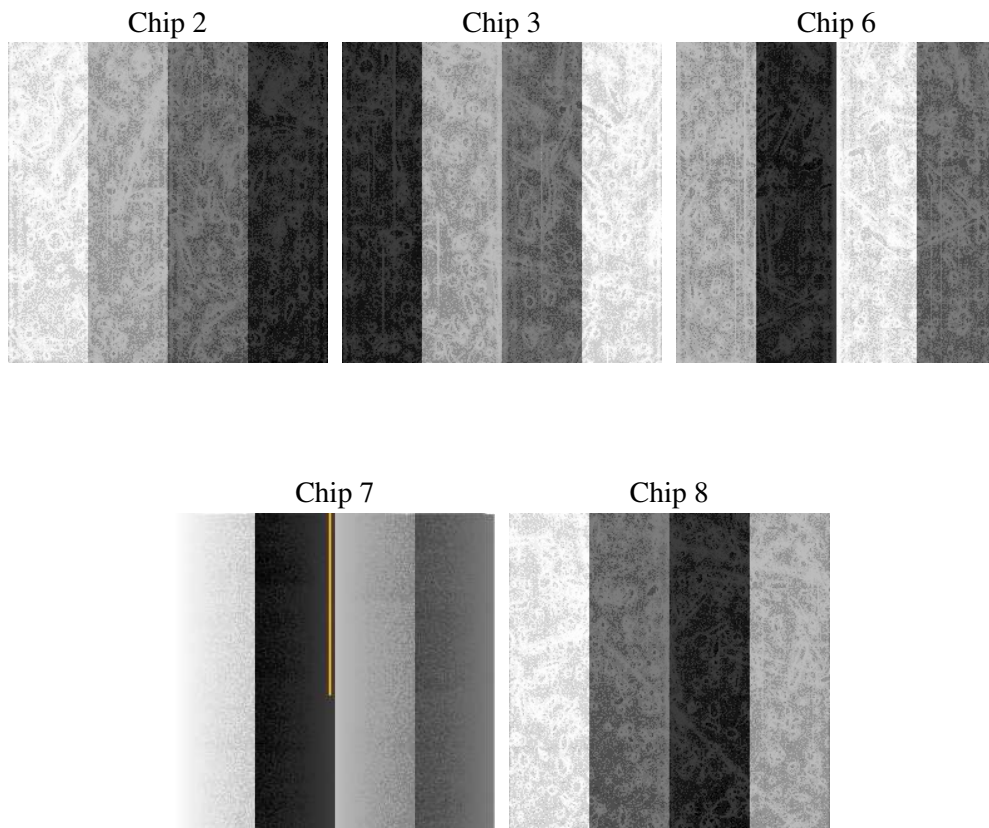
2 OBI

2.1 OBI

2.1.1 Images



2.1.2 Bias



2.1.3 Parameters

obi_num	0
ascdsver	7.6.9
caldbver	3.2.3
date	2006-10-04T15:50:45
revision	2

sched_exp_time	19000.000000
ontime	20127.535113186
ontime2	20124.394242615
ontime3	20127.535113186
ontime6	20127.535113186
ontime7	20127.535113186
ontime8	20124.394142956
llevents	561637

2.1.4 Events

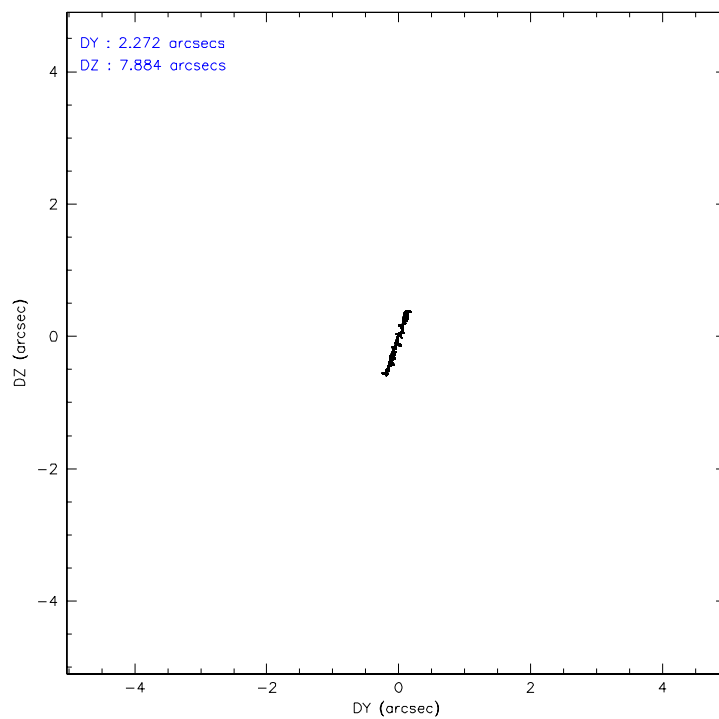
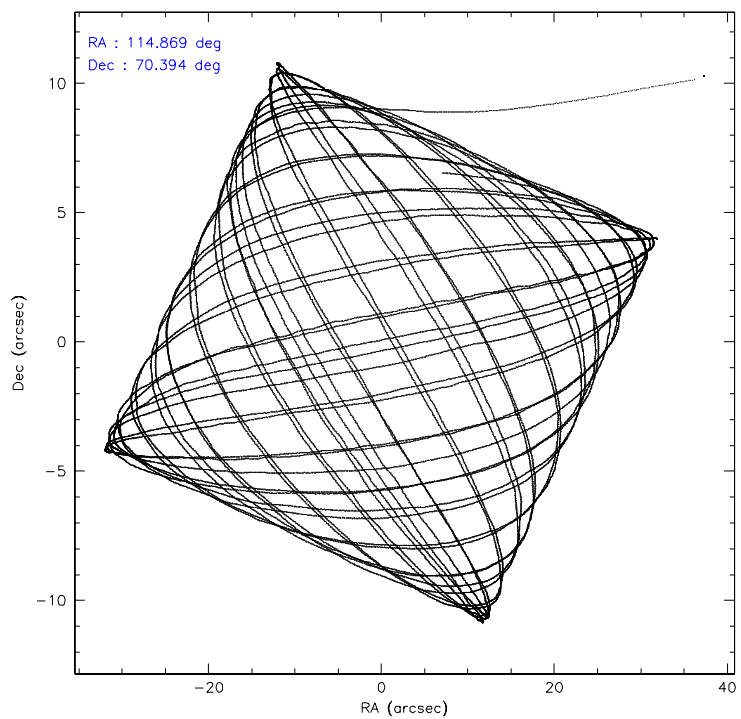
	ccd 2	ccd 3	ccd 6	ccd 7	ccd 8
level 1 events	105342	103971	107539	112940	131845
rejected events	95926	94904	97274	67333	103724
rejected %	91%	91%	90%	59%	78%

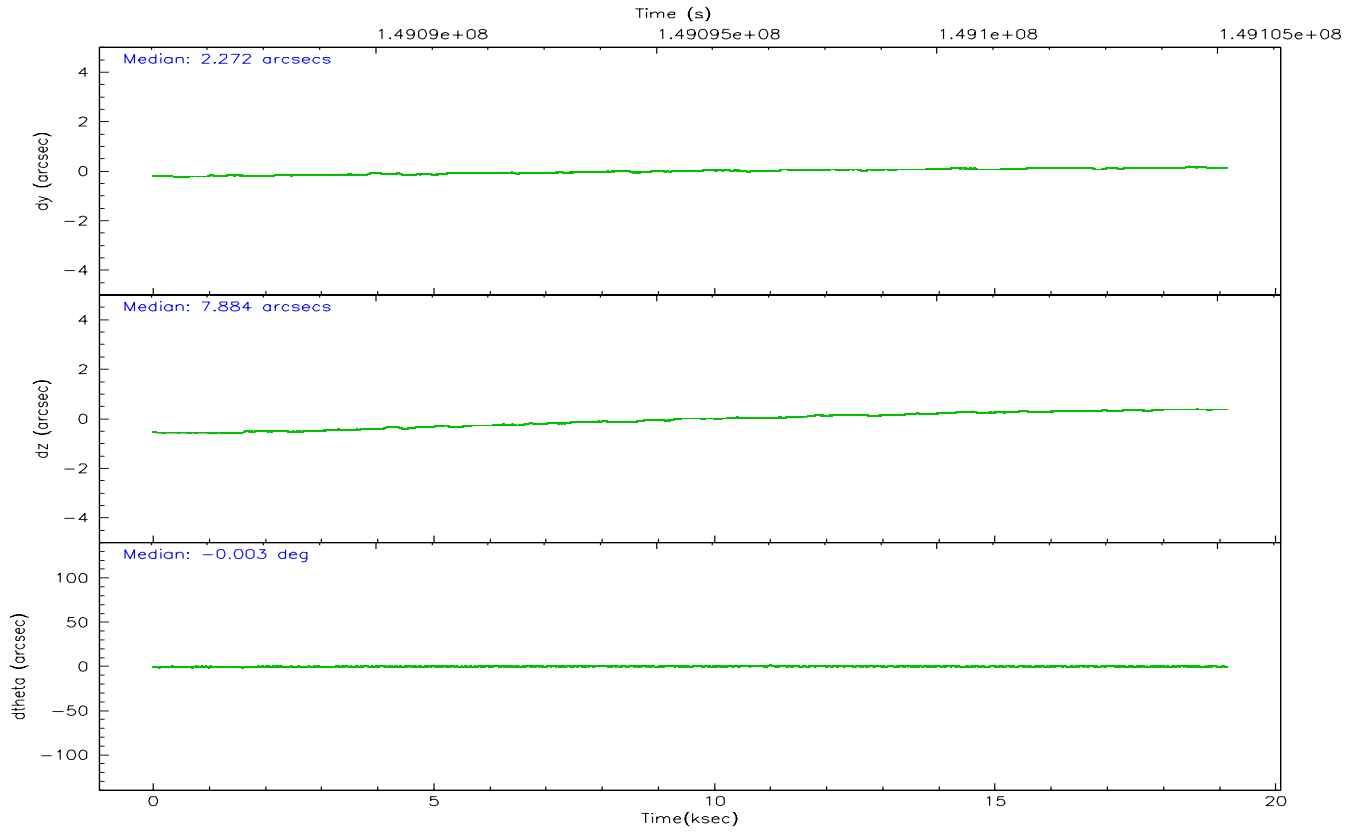
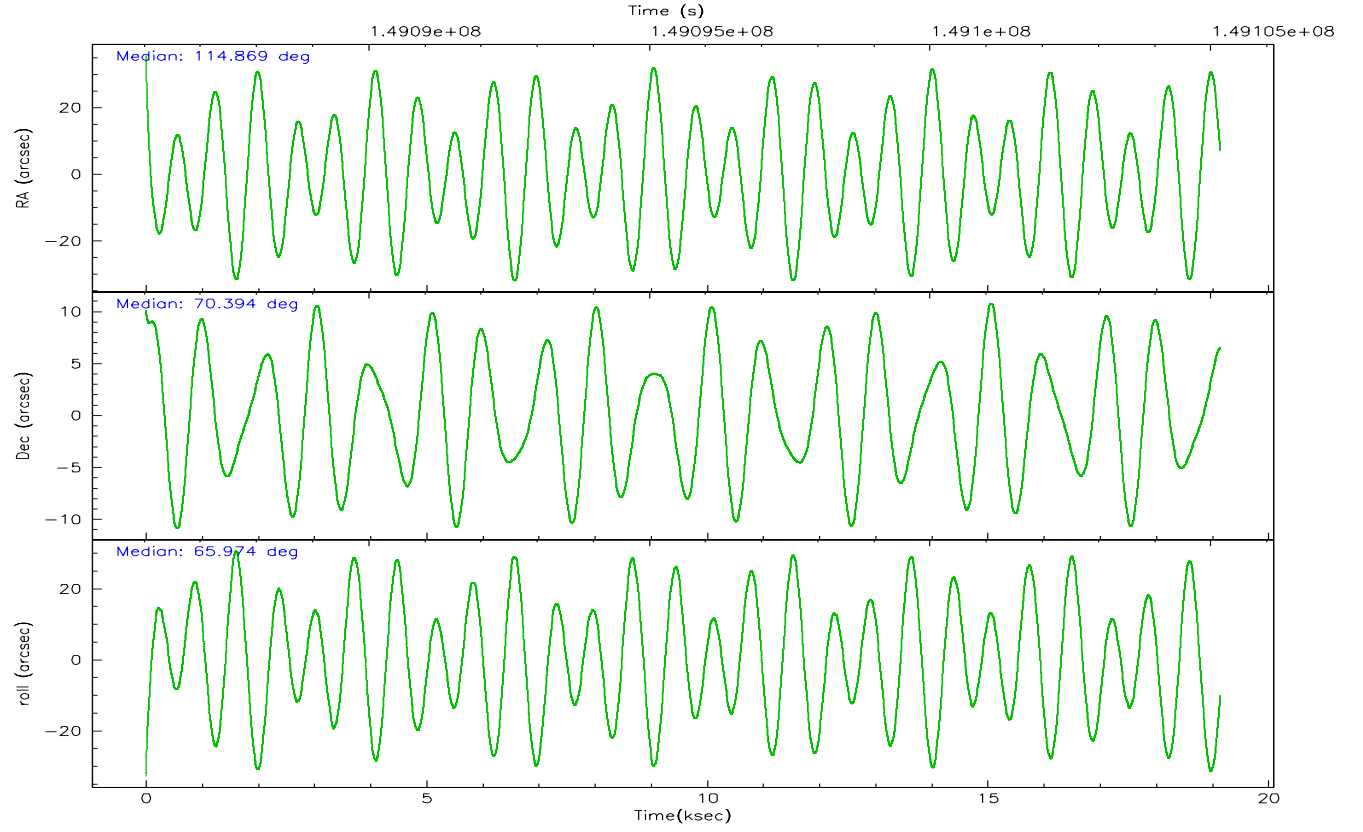
	ccd 2	ccd 3	ccd 6	ccd 7	ccd 8
grade 0 events	3493	3462	3753	3077	9058
	3%	3%	3%	2%	6%
grade 1 events	46	38	42	62	83
	0%	0%	0%	0%	0%
grade 2 events	2311	1956	2231	11769	6437
	2%	1%	2%	10%	4%
grade 3 events	1167	1156	1291	2992	3286
	1%	1%	1%	2%	2%
grade 4 events	1134	1101	1199	2872	3032
	1%	1%	1%	2%	2%
grade 5 events	3274	3926	4038	9042	5727
	3%	3%	3%	8%	4%
grade 6 events	1845	1892	2316	27223	7634
	1%	1%	2%	24%	5%
grade 7 events	92072	90440	92669	55903	96588
	87%	86%	86%	49%	73%

2.2 Compared Parameters

Parameter	Planned	Actual	Parameter	Planned	Actual
Instrument	ACIS	ACIS	Obspar format version number	6	6
Detector	ACIS-23678	ACIS-23678	Obspar file type	PREDICTED	ACTUAL
Grating	NONE	NONE	Obspar update status	NONE	UPDATED
Data mode	VFAINT	VFAINT	Number of optional ACIS chips dropped	0	0
Observation mode	POINTING	POINTING	On-chip summing requested	N	N
Pointing RA	114.877786	114.86831356022	Subarray requested	NONE	NONE
Pointing Dec	70.367332	70.39439184548725	Alternating exposures requested	N	N
Pointing Roll	65.814772	65.98031847007631	Primary exposure time	0.000000	3.1
SIM focus pos (mm)	-0.684267	-0.6828225247311905			
SIM defocus (mm)	0	0.001444936568705701			
SIM translation stage pos (mm)	-190.132523	-190.1400660498719			
SIM translation stage offset (mm)	0	0.00754346686406393			
Observation start time	149086168.184000	149084698.46866			
Observation start date	2002-09-22T12:48:24	2002-09-22T12:24:58			
Observation end time	149105168.184000	149106803.61958			
Observation end date	2002-09-22T18:05:04	2002-09-22T18:33:23			
Read mode	TIMED	TIMED			

2.3 Aspect



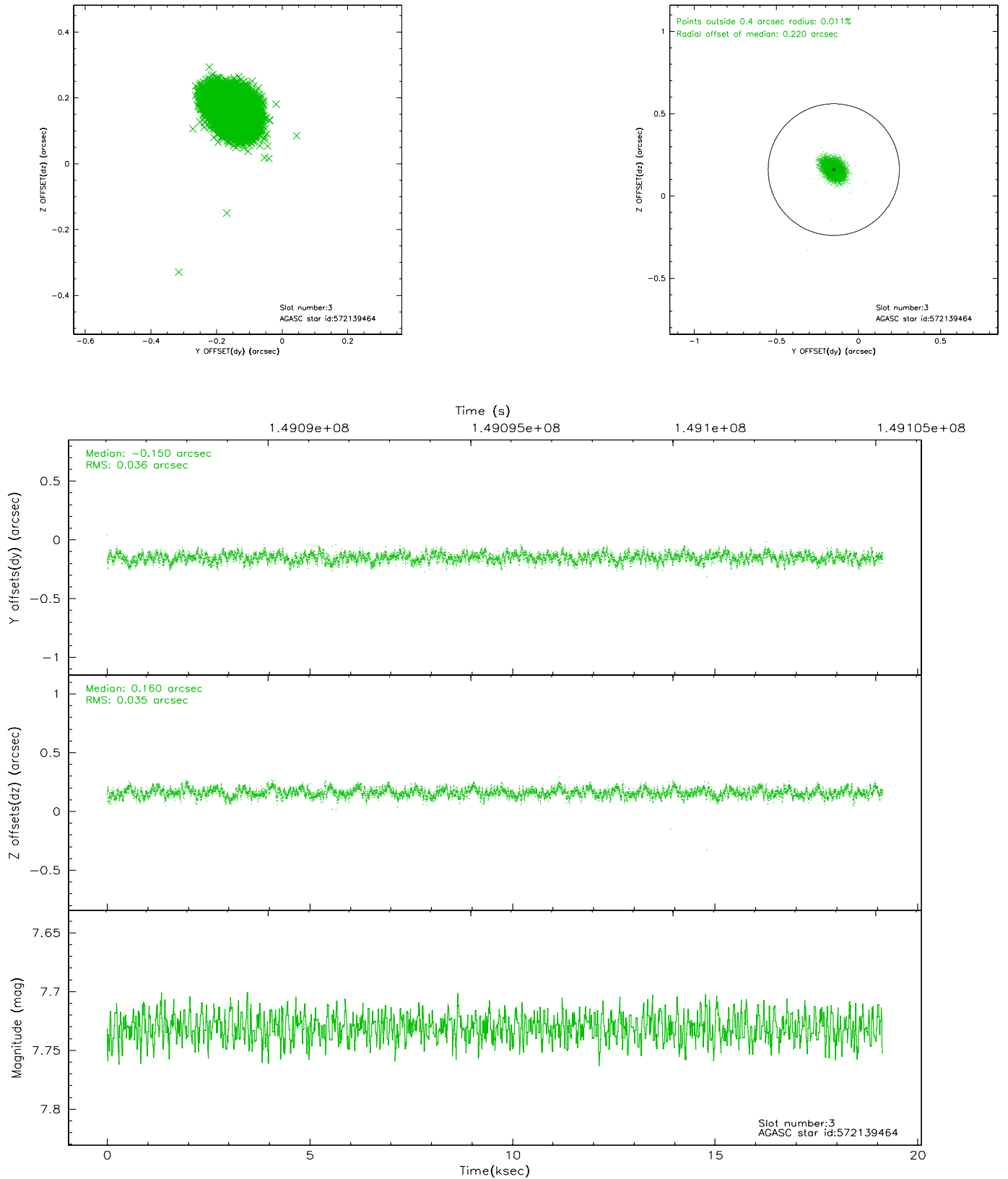


Slot Statistics

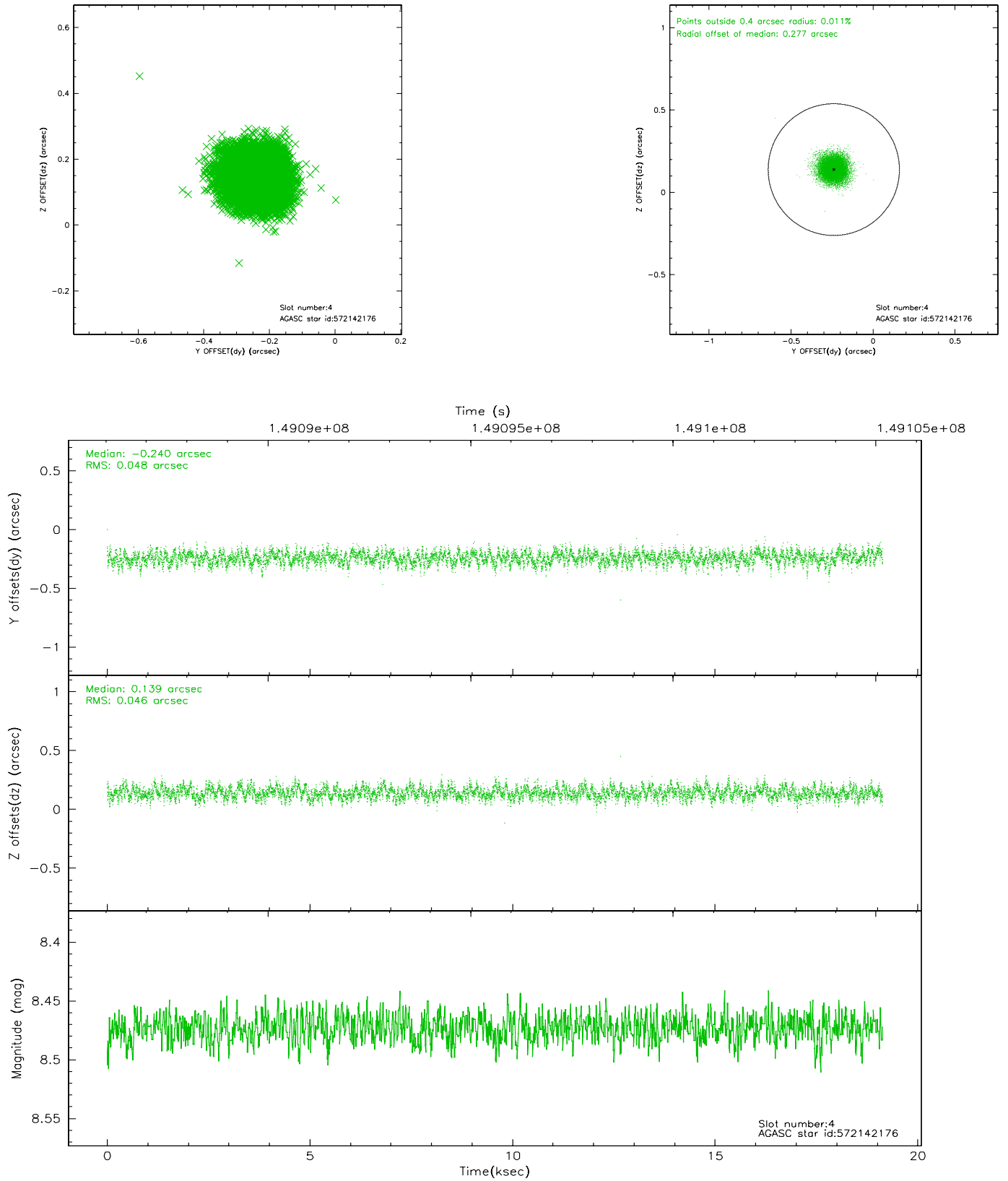
slot	status	id	mag	n_pts	med_dy	med_dz	dr1	dr2	ra	dec	mean_y	mean_z
0	FID	ACIS-S-2	7.11	4669	-0.004	0.027	0.008	0.013	0.000000	0.000000	-754.90	-1728.98
1	FID	ACIS-S-4	7.20	4669	-0.078	-0.005	0.006	0.010	0.000000	0.000000	2158.23	179.23
2	FID	ACIS-S-5	7.24	4668	0.051	-0.013	0.009	0.015	0.000000	0.000000	-1807.41	173.17
3	GUIDE	572139464	7.73	9338	-0.150	0.160	0.053	0.087	116.112761	70.744532	1853.08	-773.98
4	GUIDE	572142176	8.47	9335	-0.240	0.139	0.070	0.113	116.984175	70.780062	2417.89	-1649.37
5	GUIDE	572007720	8.97	9332	0.292	-0.189	0.083	0.133	113.075233	70.104208	-1738.17	1639.76
6	GUIDE	572131544	9.06	9336	0.078	0.035	0.079	0.123	115.081370	70.017824	-1044.48	-742.96
7	GUIDE	572005592	9.33	9330	0.029	-0.149	0.103	0.165	113.587769	70.466256	-296.11	1569.51

2.4 Star Slots

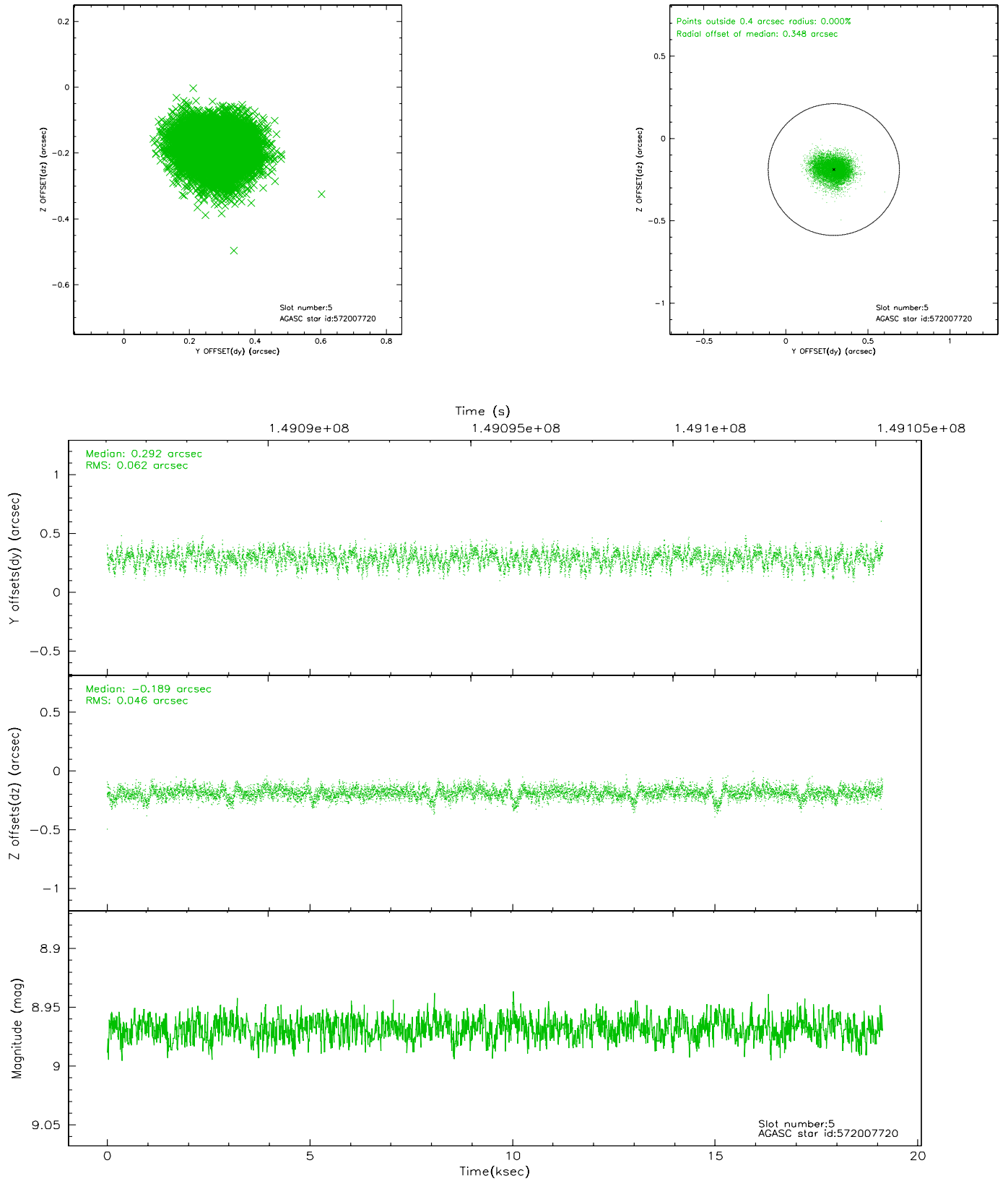
2.4.1 Slot 3



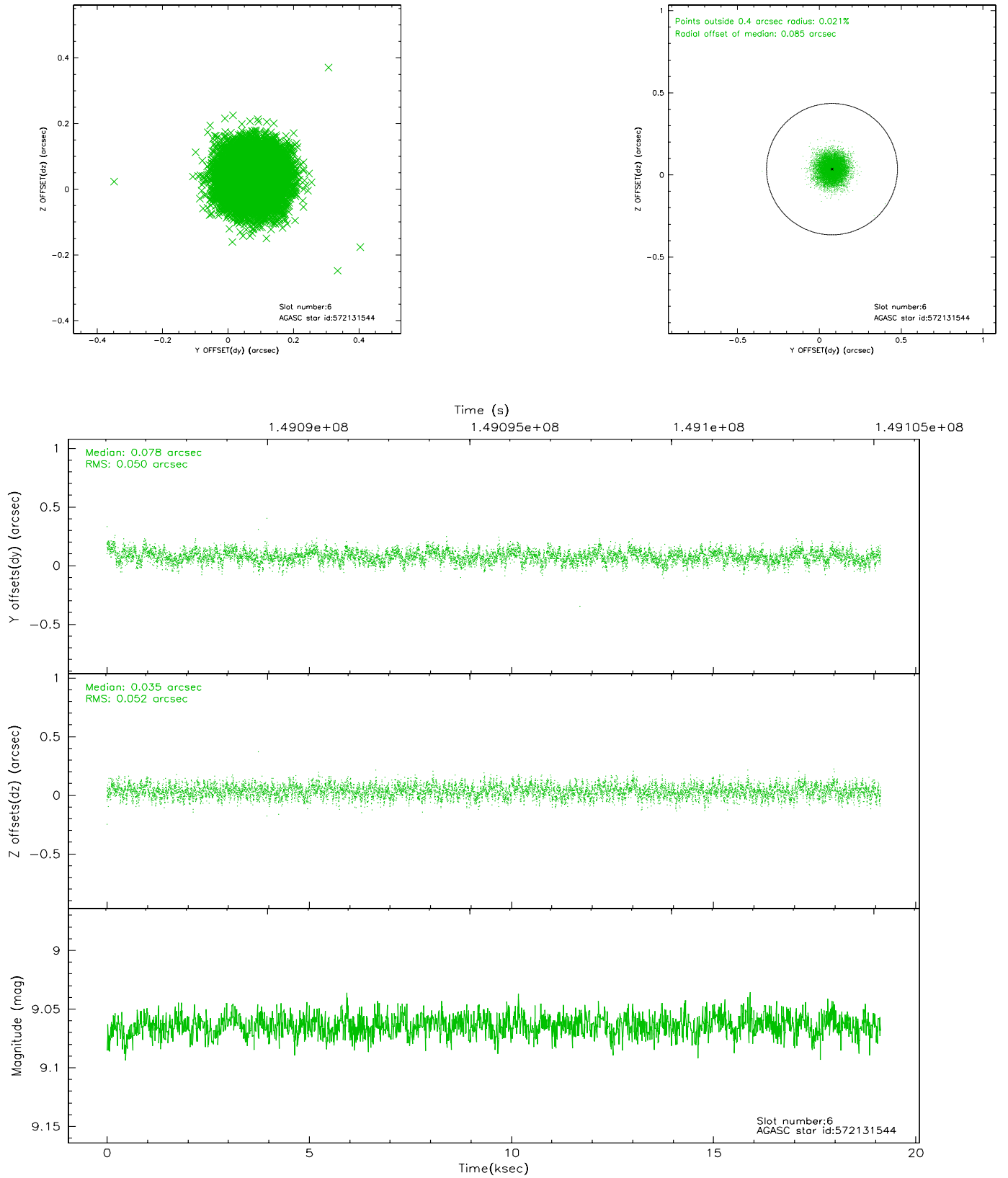
2.4.2 Slot 4



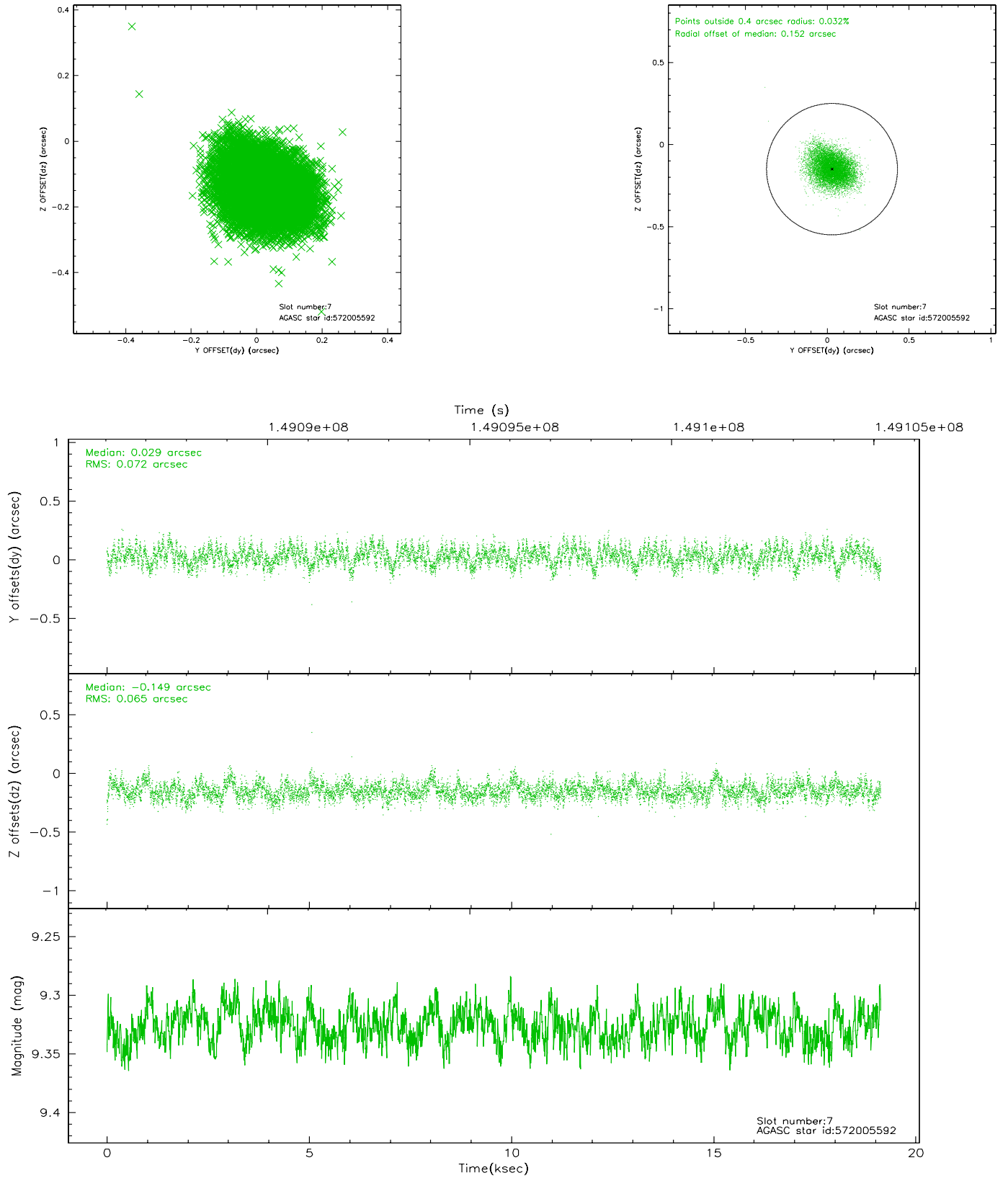
2.4.3 Slot 5



2.4.4 Slot 6

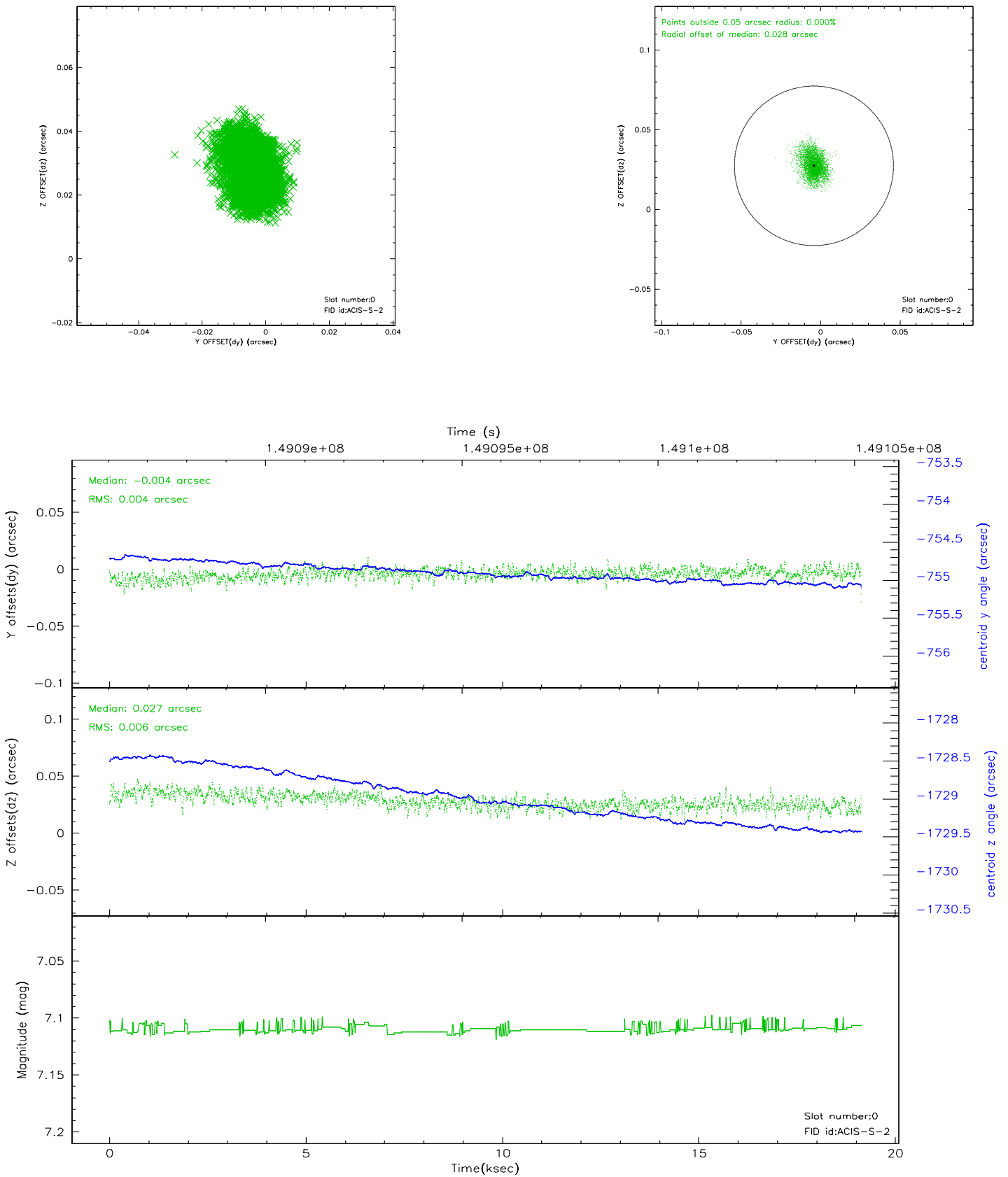


2.4.5 Slot 7

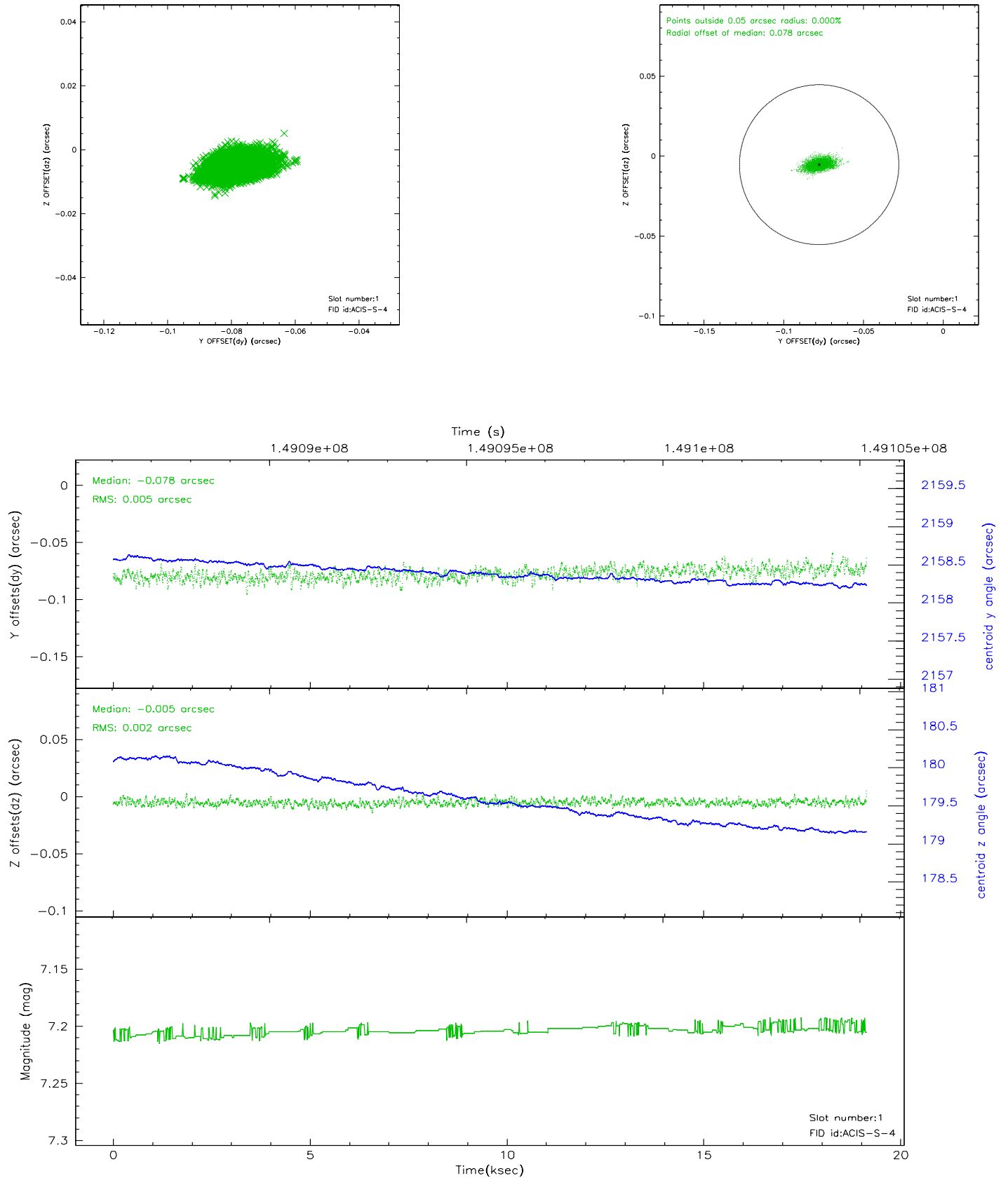


2.5 FID Slots

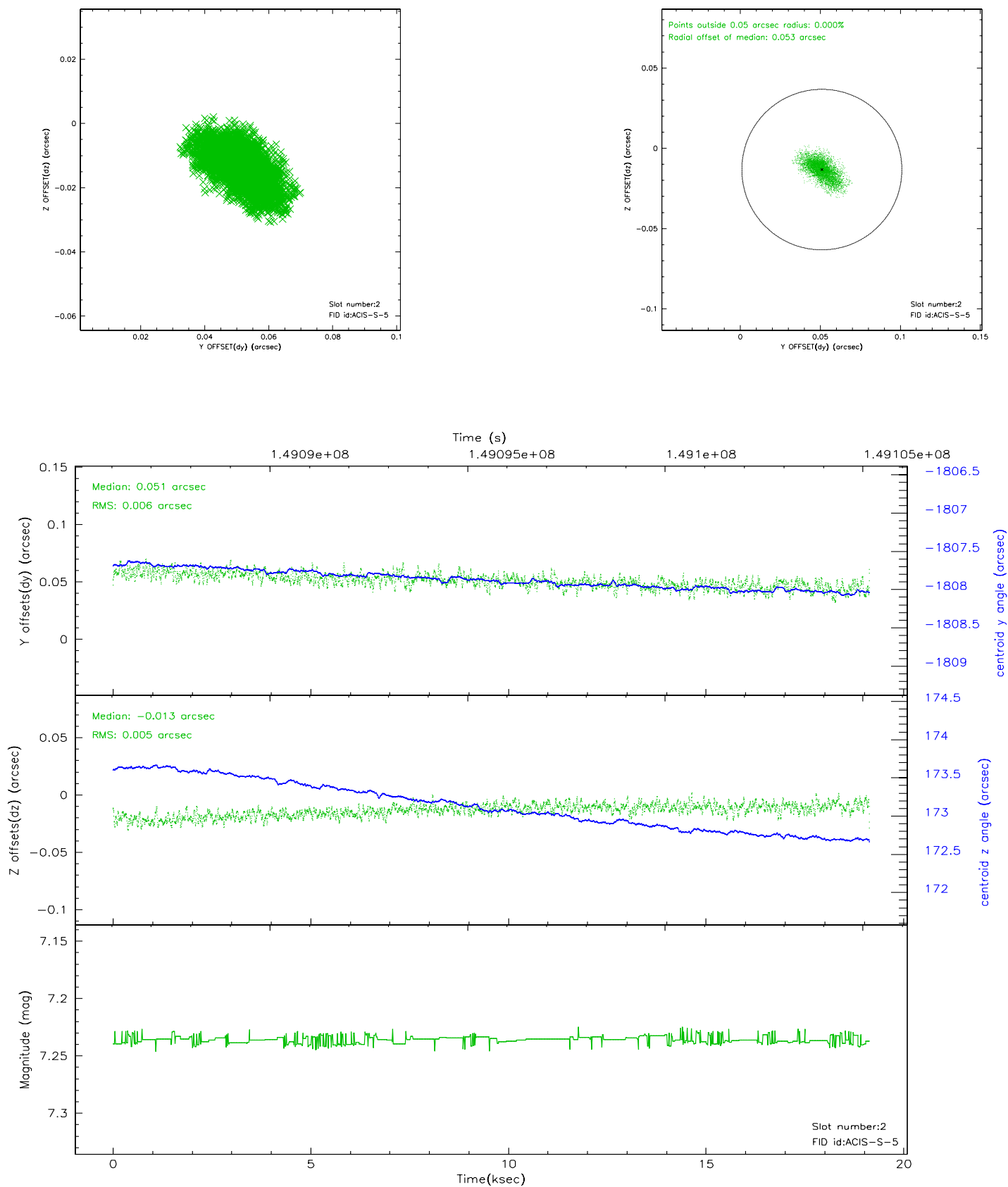
2.5.1 Slot 0



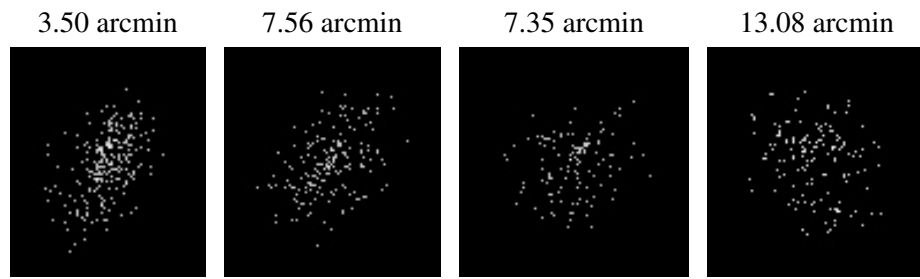
2.5.2 Slot 1



2.5.3 Slot 2



3 Point Sources



A Summary

A.1 Status

V&V Scientist	Beth Sundheim
V&V Date (YYYY-MM-DD)	2006.10.04
V&V Edition	1
V&V Disposition and Status	OK
V&V Charge Time	19.136

A.2 Comments