

V&V Reference Report

L2 ASCDS Version : 8.4.5

Observation 3206 - L2 Version 3
Chandra X-Ray Center

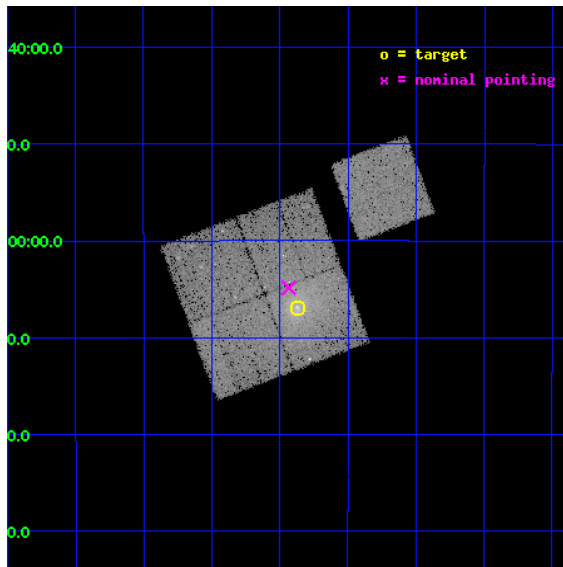
L2 Processing Date : Oct 15 2012

Contents

1	Front	2
2	OBI	3
2.1	OBI	3
2.1.1	Images	3
2.1.2	Bias	3
2.1.3	Parameters	4
2.1.4	Events	4
2.2	Compared Parameters	5
2.3	Aspect	6
2.4	Star Slots	9
2.4.1	Slot 3	9
2.4.2	Slot 4	10
2.4.3	Slot 5	11
2.4.4	Slot 6	12
2.4.5	Slot 7	13
2.5	FID Slots	14
2.5.1	Slot 0	14
2.5.2	Slot 1	15
2.5.3	Slot 2	16
A	Summary	17
A.1	Status	17
A.2	Comments	17

1 Front

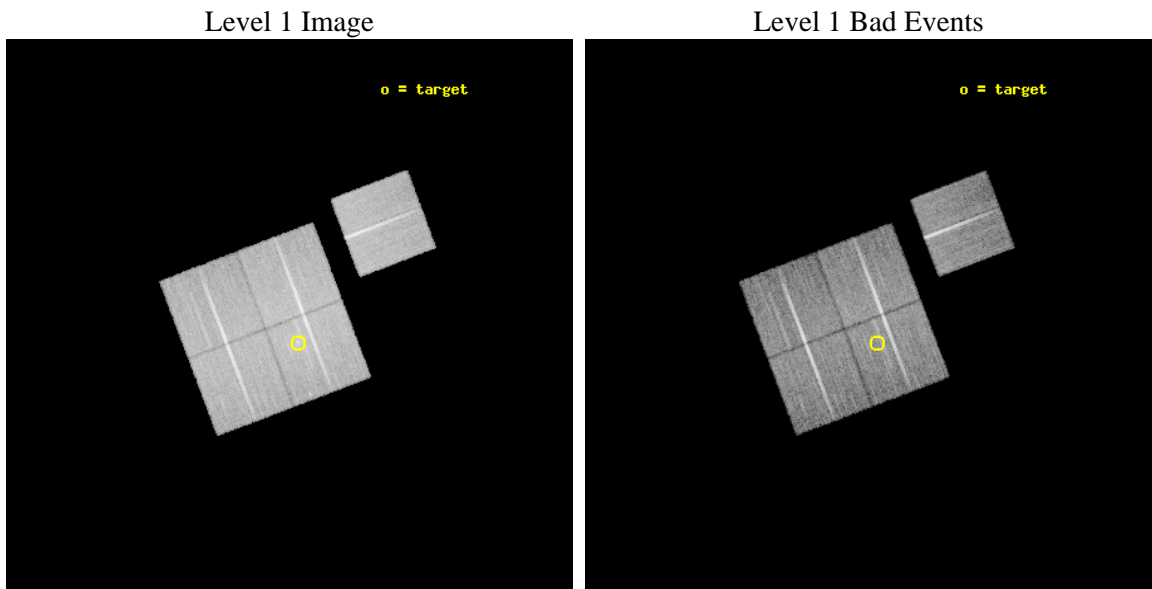
seq_num	800206	Sequence number
obs_id	3206	Observation id
title	OVER-LUMINOUS ELLIPTICAL GALAXIES (AKA FOSSIL GROUPS)	Proposal tit
observer	Dr. william forman	Principal investigator
object	ESO5520200	Source name
dtcycle	0	
cycle	P	events from which exps? Prim/Second/Both
ra_targ	73.7175	Observer's specified target RA [deg]
dec_targ	-18.115556	Observer's specified target Dec [deg]
ra_nom	73.73345245877	Nominal RA [deg]
dec_nom	-18.081057608401	Nominal Dec [deg]
roll_nom	69.241833699033	Nominal Roll [deg]
revision	3	Processing version of data
ontime	24179.95900318	Sum of GTIs [s]
livetime	23864.030037777	Livetime [s]
ontime0	24173.676953048	Sum of GTIs [s]
ontime1	24170.536042511	Sum of GTIs [s]
ontime2	24176.817993075	Sum of GTIs [s]
ontime3	24179.95900318	Sum of GTIs [s]
ontime6	24176.818002969	Sum of GTIs [s]
l2events	86633	Number of level 2 events



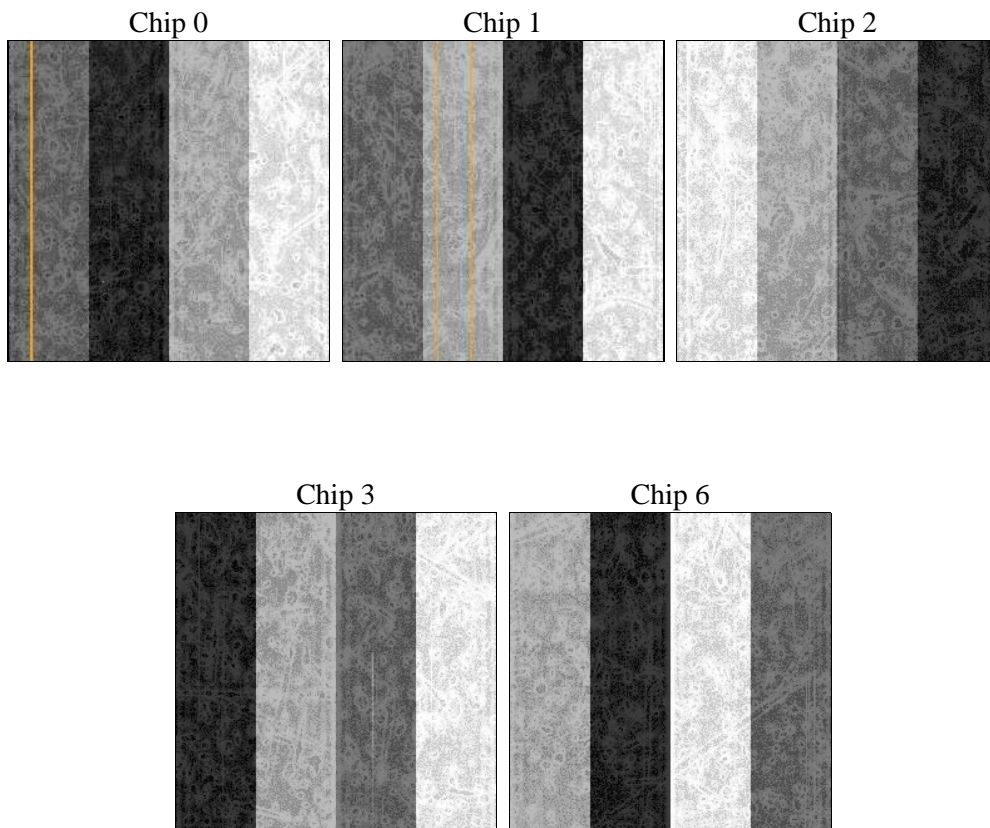
2 OBI

2.1 OBI

2.1.1 Images



2.1.2 Bias



2.1.3 Parameters

obi_num	0	Obi number	sched_exp_time	24000.000000	[s] Scheduled observation exposure time
ascdsver	8.4.5	Processing system revision	ontime	24179.95900318	Sum of GTIs [s]
caldsver	4.5.2	 	ontime0	24173.676953048	Sum of GTIs [s]
date	2012-10-15T13:26:08	Date and time of file creation	ontime1	24170.536042511	Sum of GTIs [s]
revision	3	Processing version of data	ontime2	24176.817993075	Sum of GTIs [s]
			ontime3	24179.95900318	Sum of GTIs [s]
			ontime6	24176.818002969	Sum of GTIs [s]
			l1events	711033	Number of level 1 events

2.1.4 Events

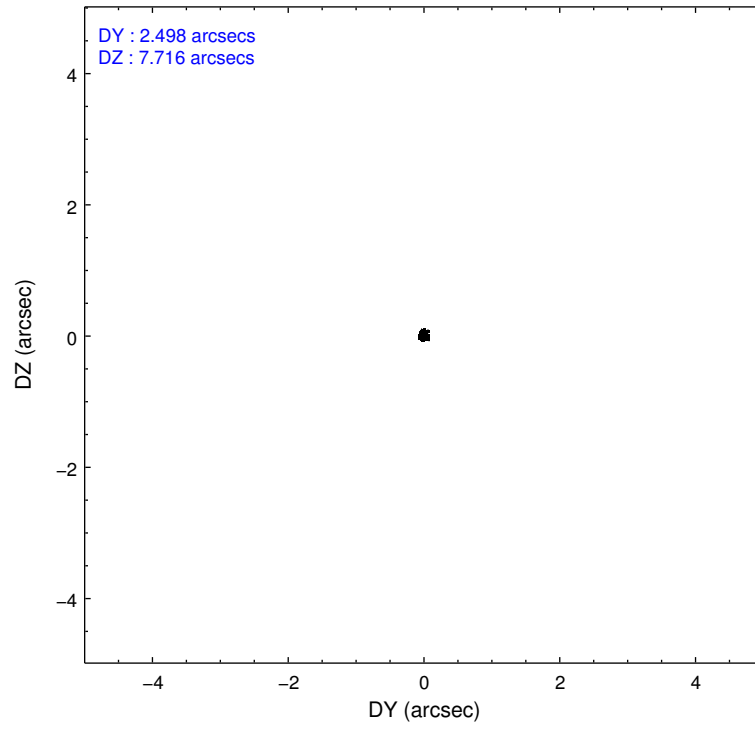
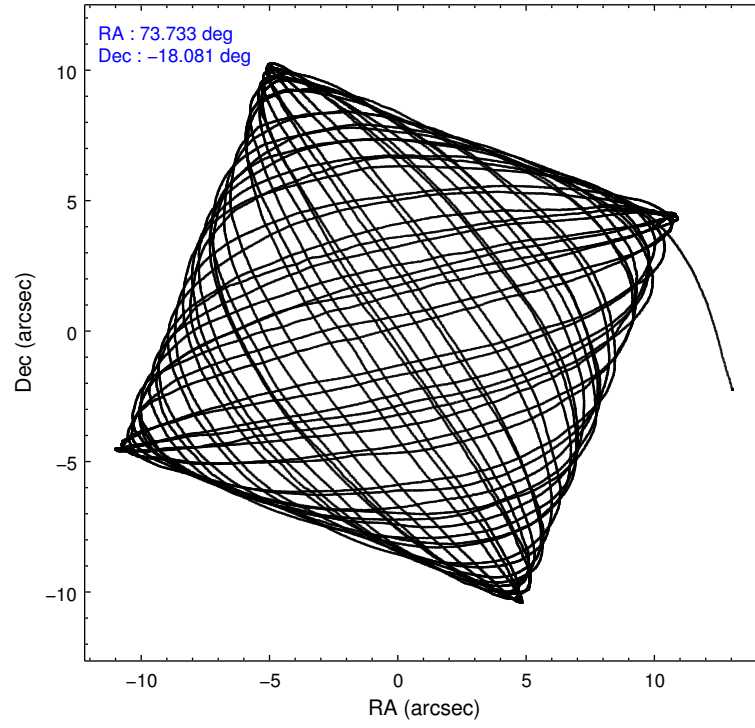
	ccd 0	ccd 1	ccd 2	ccd 3	ccd 6
level 1 events	130999	133994	150063	153212	142765
rejected events	114530	114251	131784	126264	124182
rejected %	87%	85%	87%	82%	86%

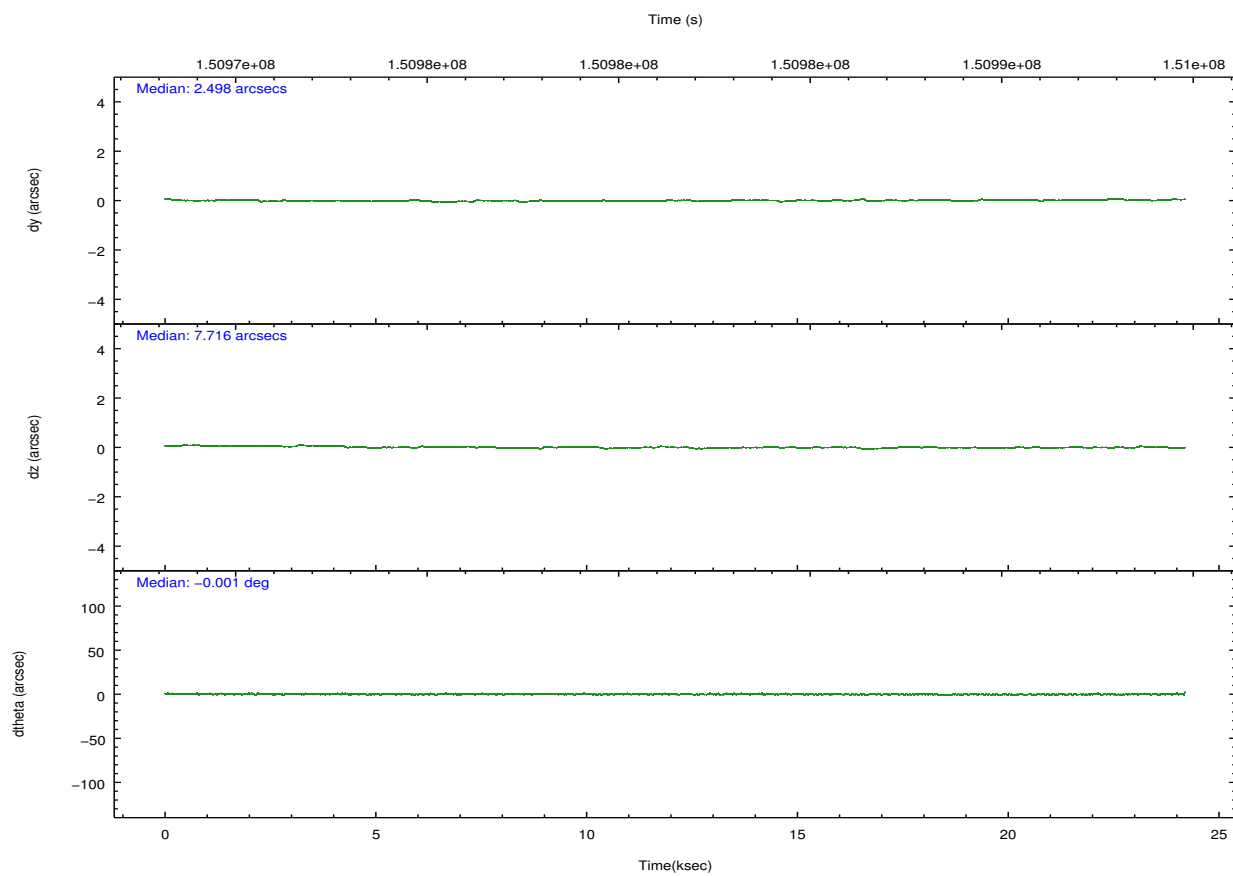
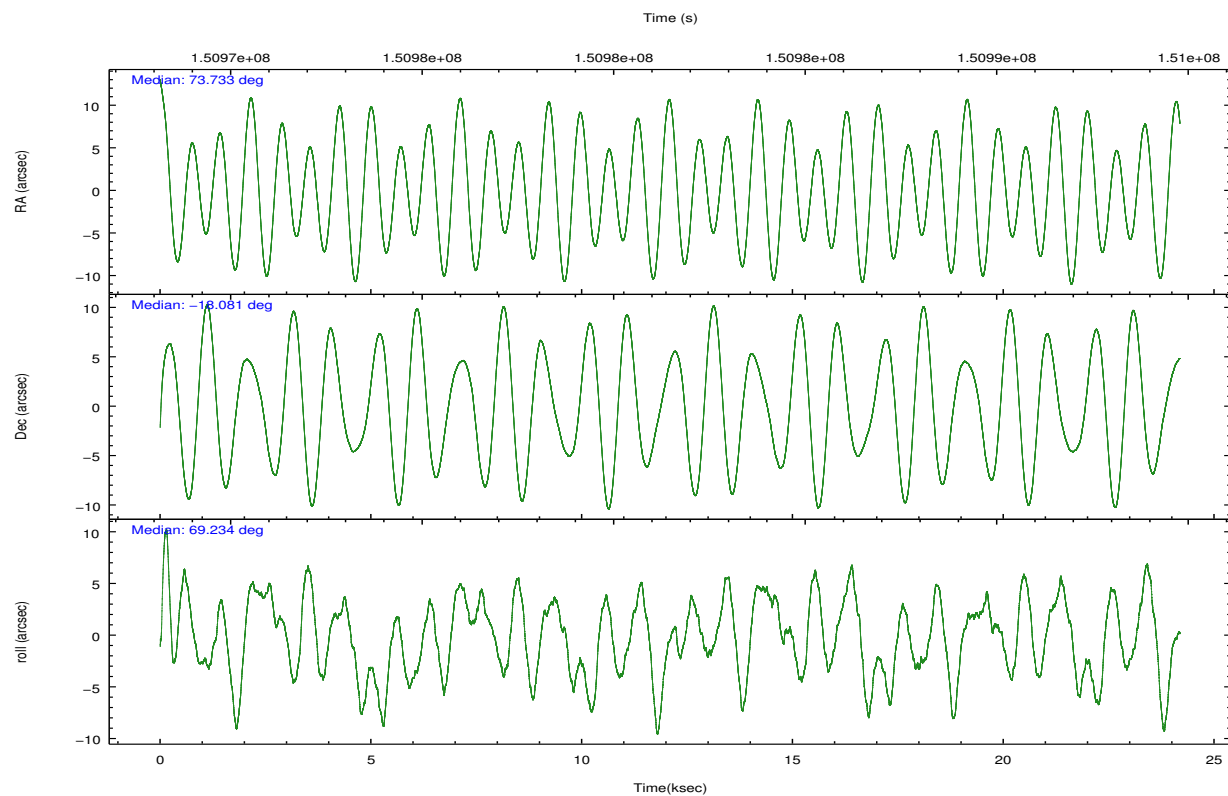
	ccd 0	ccd 1	ccd 2	ccd 3	ccd 6
grade 0 events	7369	9632	9297	16854	9320
	5%	7%	6%	11%	6%
grade 1 events	86	67	84	120	70
	0%	0%	0%	0%	0%
grade 2 events	3377	3616	3426	3877	3213
	2%	2%	2%	2%	2%
grade 3 events	1669	1777	1612	1823	1651
	1%	1%	1%	1%	1%
grade 4 events	1589	1835	1653	1886	1648
	1%	1%	1%	1%	1%
grade 5 events	4729	4867	4427	5228	5103
	3%	3%	2%	3%	3%
grade 6 events	2587	3017	2418	2650	2857
	1%	2%	1%	1%	2%
grade 7 events	109593	109183	127146	120774	118903
	83%	81%	84%	78%	83%

2.2 Compared Parameters

Parameter	Planned	Actual	Parameter	Planned	Actual
Instrument	ACIS	ACIS	Obspar format version number	7	7
Detector	ACIS-01236	ACIS-01236	Obspar file type	PREDICTED	ACTUAL
Grating	NONE	NONE	Obspar update status	NONE	UPDATED
Data mode	VFAINT	VFAINT	Number of optional ACIS chips dropped	0	0
Observation mode	POINTING	POINTING	On-chip summing requested	N	N
[deg] Pointing RA	73.738168	73.73345245877005	Subarray requested	NONE	NONE
[deg] Pointing Dec	-18.108091	-18.08105760840057	Alternating exposures requested	N	N
[deg] Pointing Roll	69.034616	69.24183369903287	[s] Primary exposure time	0.000000	3.1
[mm] SIM focus pos	-0.782348	-0.7809083437167272			
[mm] SIM defocus	0	0.001439871863259334			
[mm] SIM translation stage pos	-227.592463	-227.5933067819097			
[mm] SIM translation stage offset	-6	-5.999146221020027			
[s] Observation start time (MET)	150969567.184000	150968477.88418			
Observation start date	2002-10-14T07:58:23	2002-10-14T07:41:17			
[s] Observation end time (MET)	150993567.184000	150994546.19777			
Observation end date	2002-10-14T14:38:23	2002-10-14T14:55:46			
Read mode	TIMED	TIMED			

2.3 Aspect



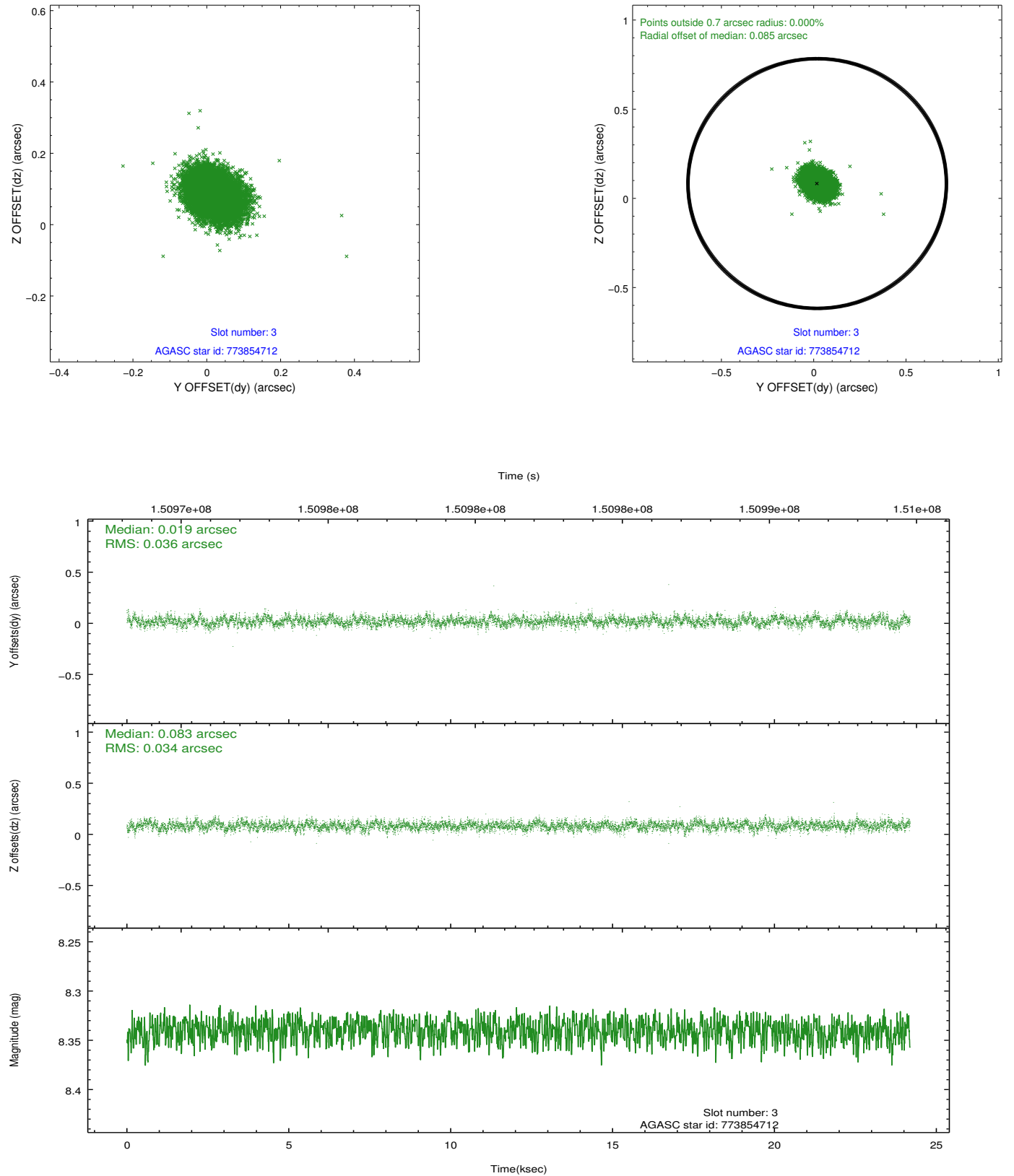


Slot Statistics

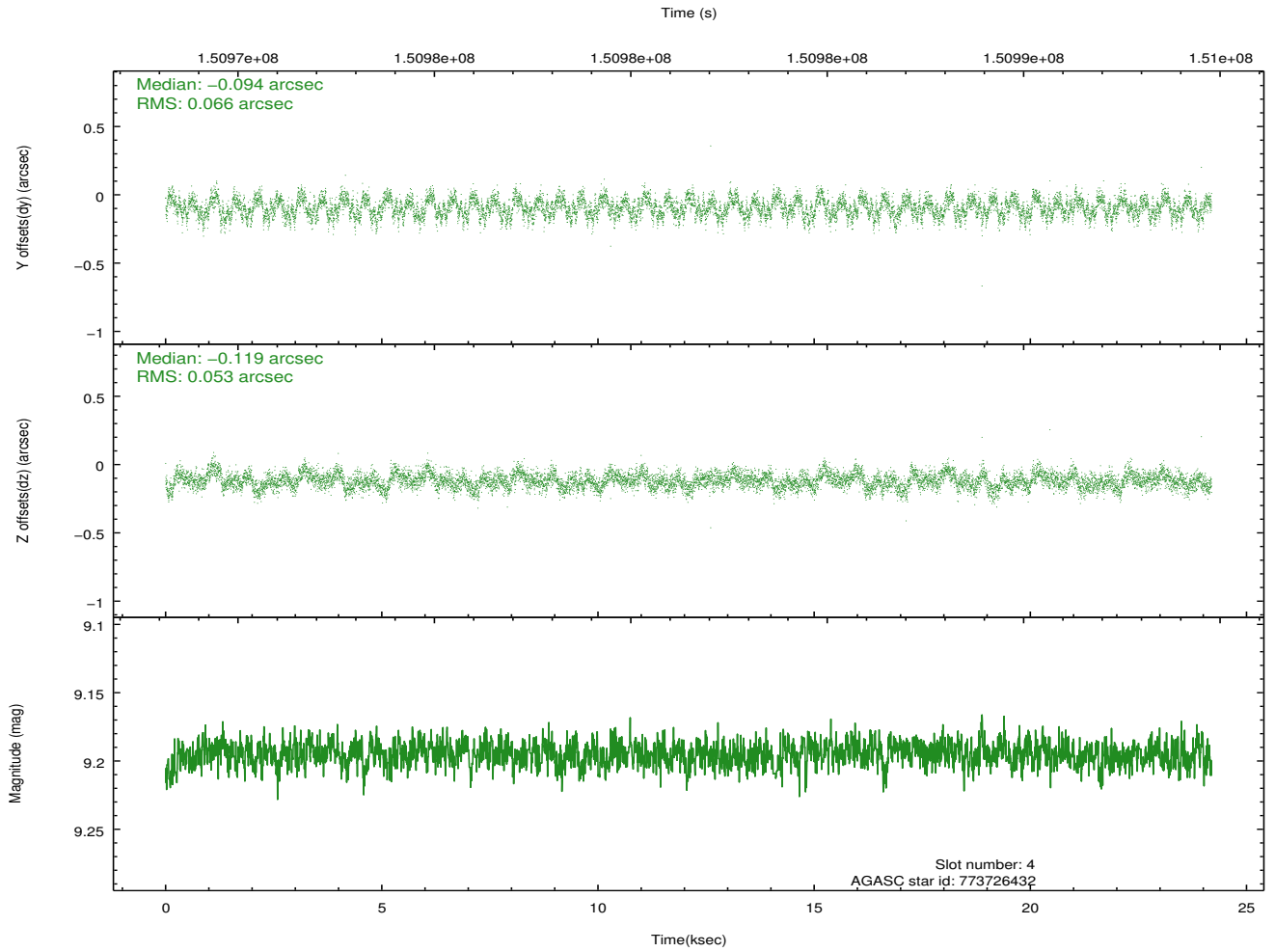
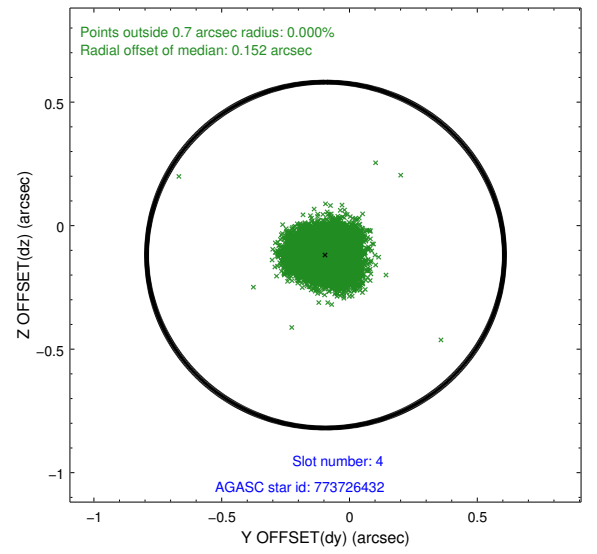
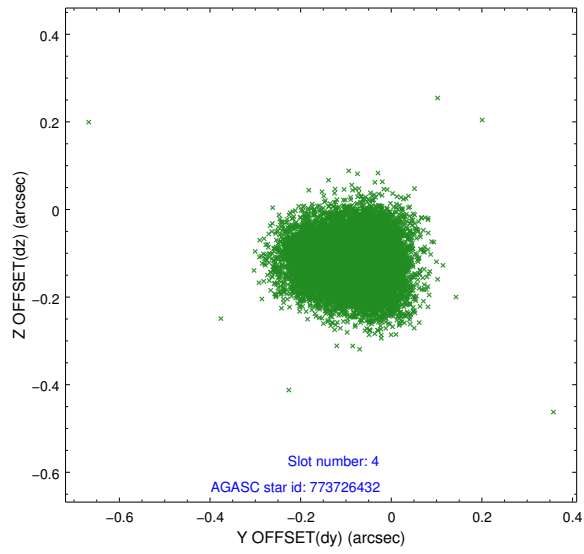
slot	status	id	mag	n_pts	med_dy	med_dz	dr1	dr2	ra	dec	mean_y	mean_z
0	FID	ACIS-I-1	7.24	5899	0.083	-0.075	0.007	0.011	0.000000	0.000000	937.25	-954.36
1	FID	ACIS-I-5	7.24	5899	-0.154	0.095	0.006	0.011	0.000000	0.000000	-1810.97	943.28
2	FID	ACIS-I-6	7.26	5900	-0.020	0.051	0.008	0.012	0.000000	0.000000	402.62	1587.83
3	GUIDE	773854712	8.34	11792	0.019	0.083	0.052	0.086	74.260751	-18.111726	625.35	-1675.14
4	GUIDE	773726432	9.19	11796	-0.094	-0.119	0.090	0.143	73.494840	-17.571293	1504.77	1471.07
5	GUIDE	773854736	9.08	11793	-0.090	0.125	0.095	0.150	74.403540	-18.283949	218.92	-2351.49
6	GUIDE	773855160	9.51	11795	0.083	0.084	0.100	0.161	74.260632	-18.393746	-323.90	-2035.58
7	GUIDE	773722064	9.80	11754	0.077	-0.175	0.098	0.160	73.251608	-18.108279	-598.74	1553.21

2.4 Star Slots

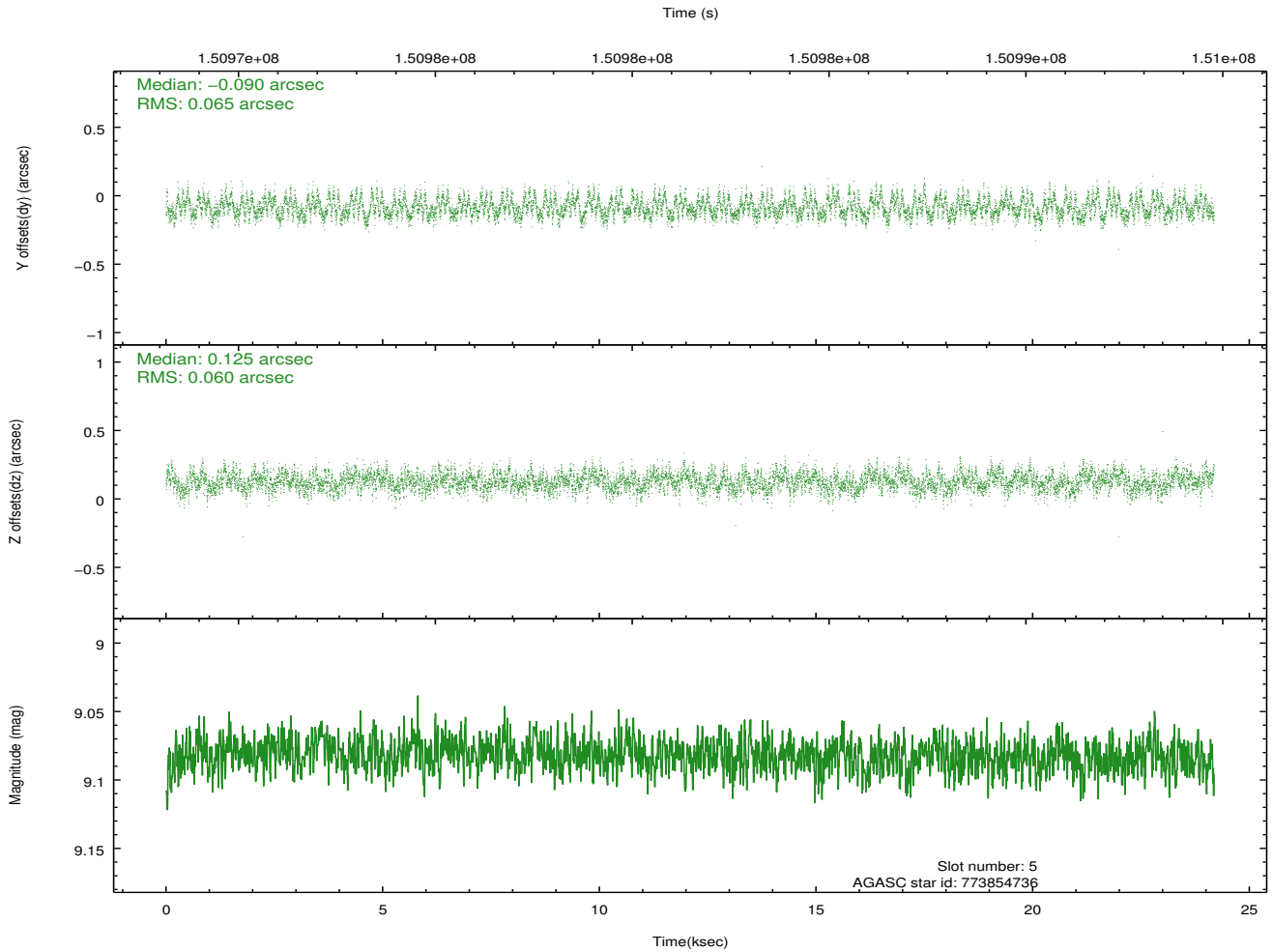
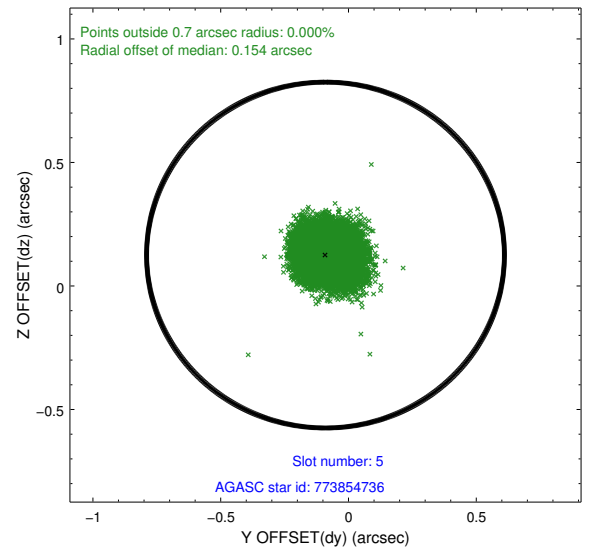
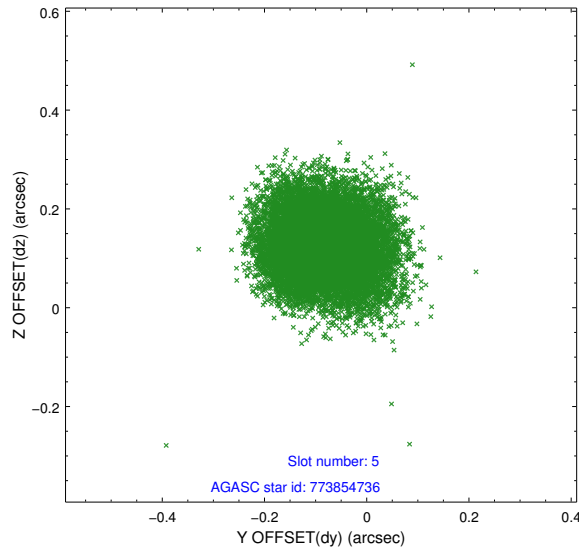
2.4.1 Slot 3



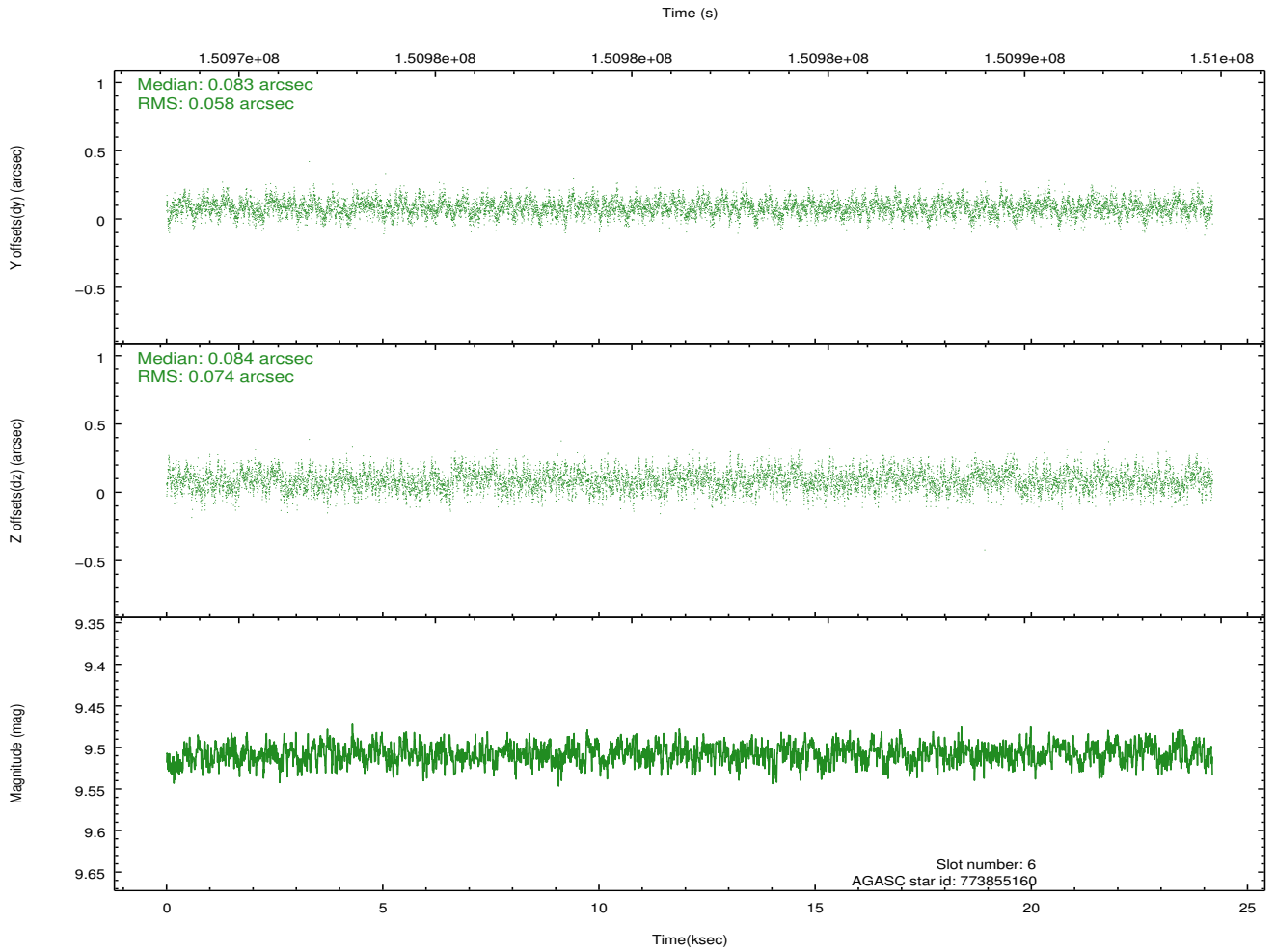
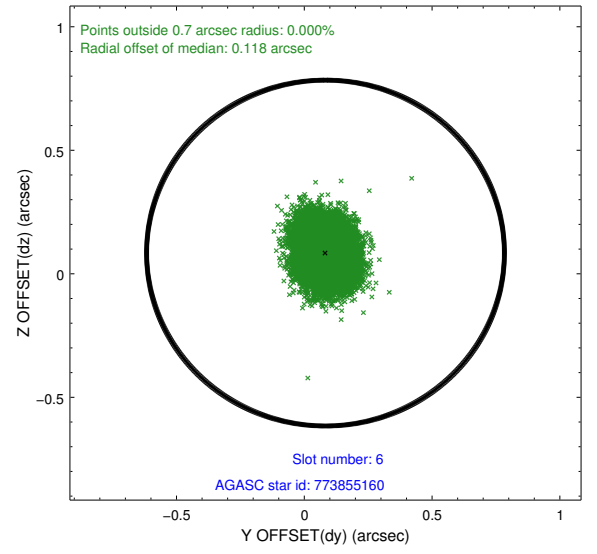
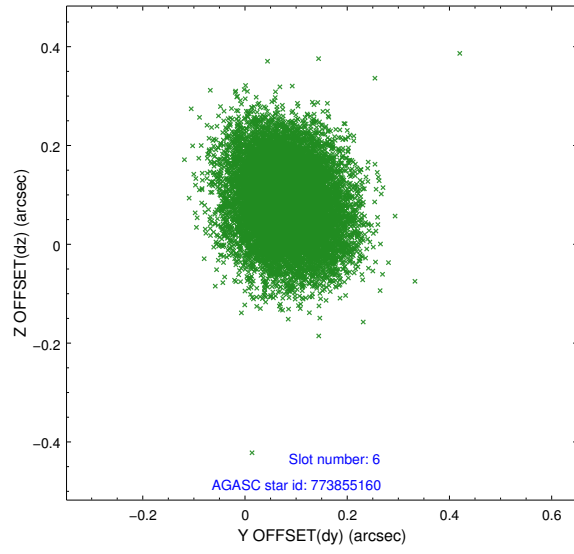
2.4.2 Slot 4



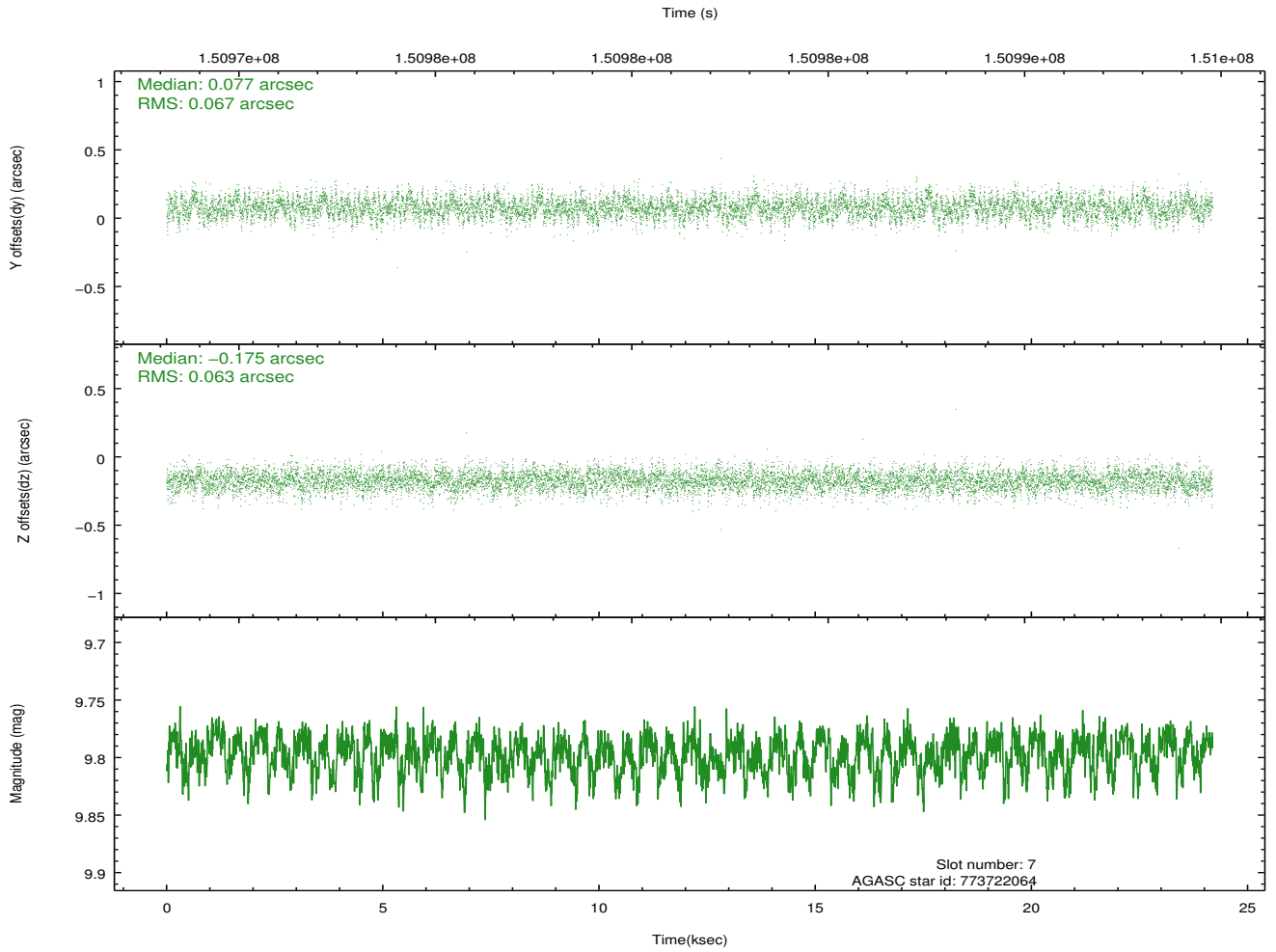
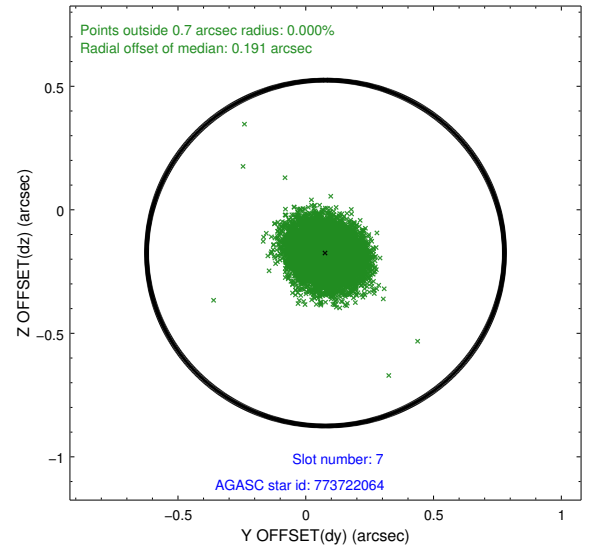
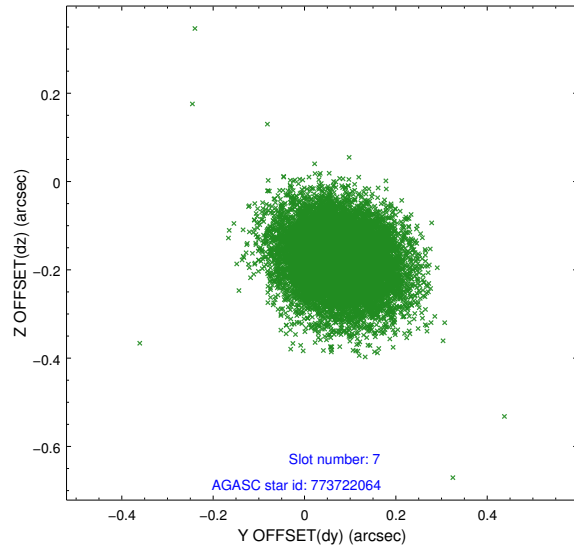
2.4.3 Slot 5



2.4.4 Slot 6

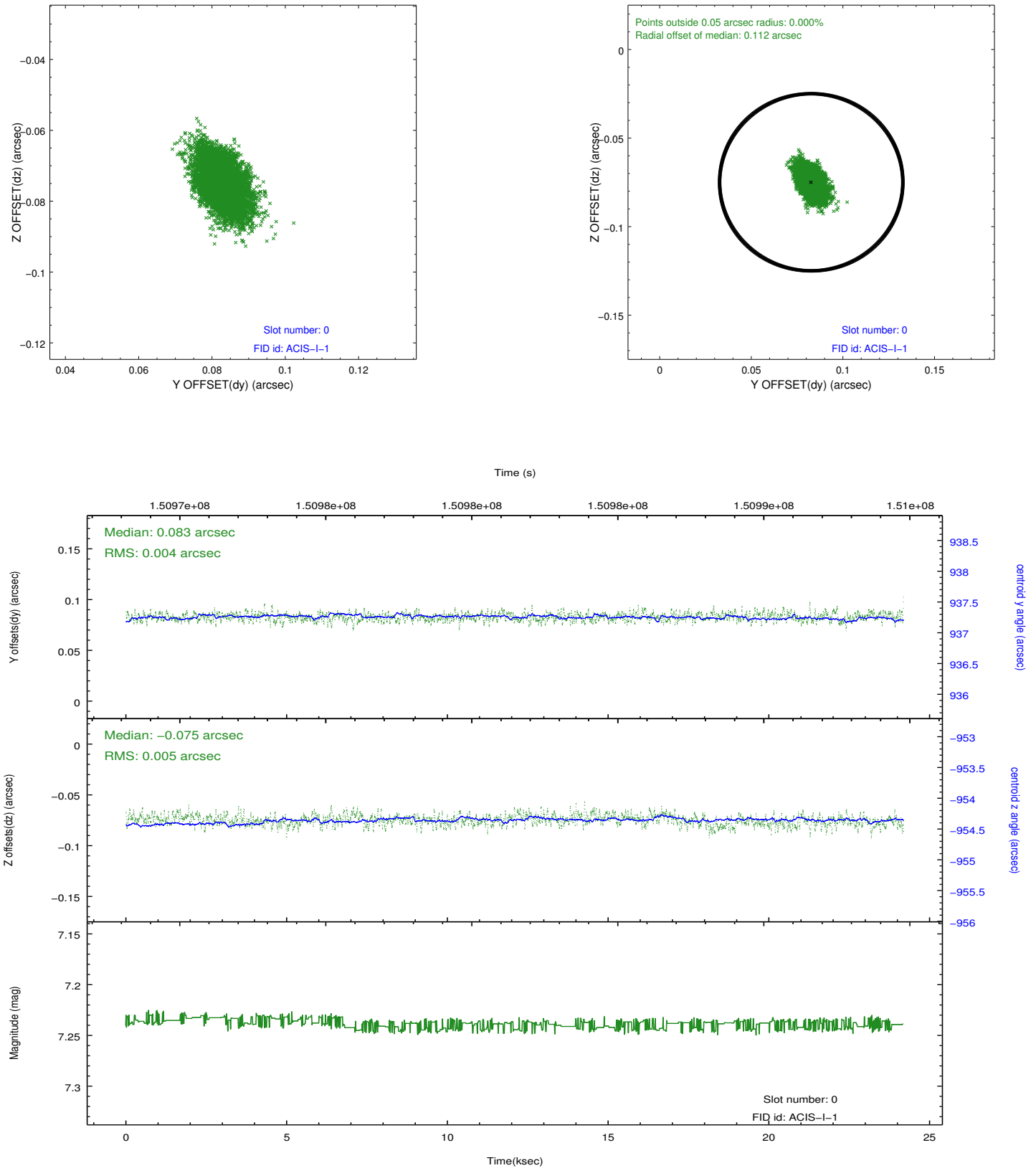


2.4.5 Slot 7

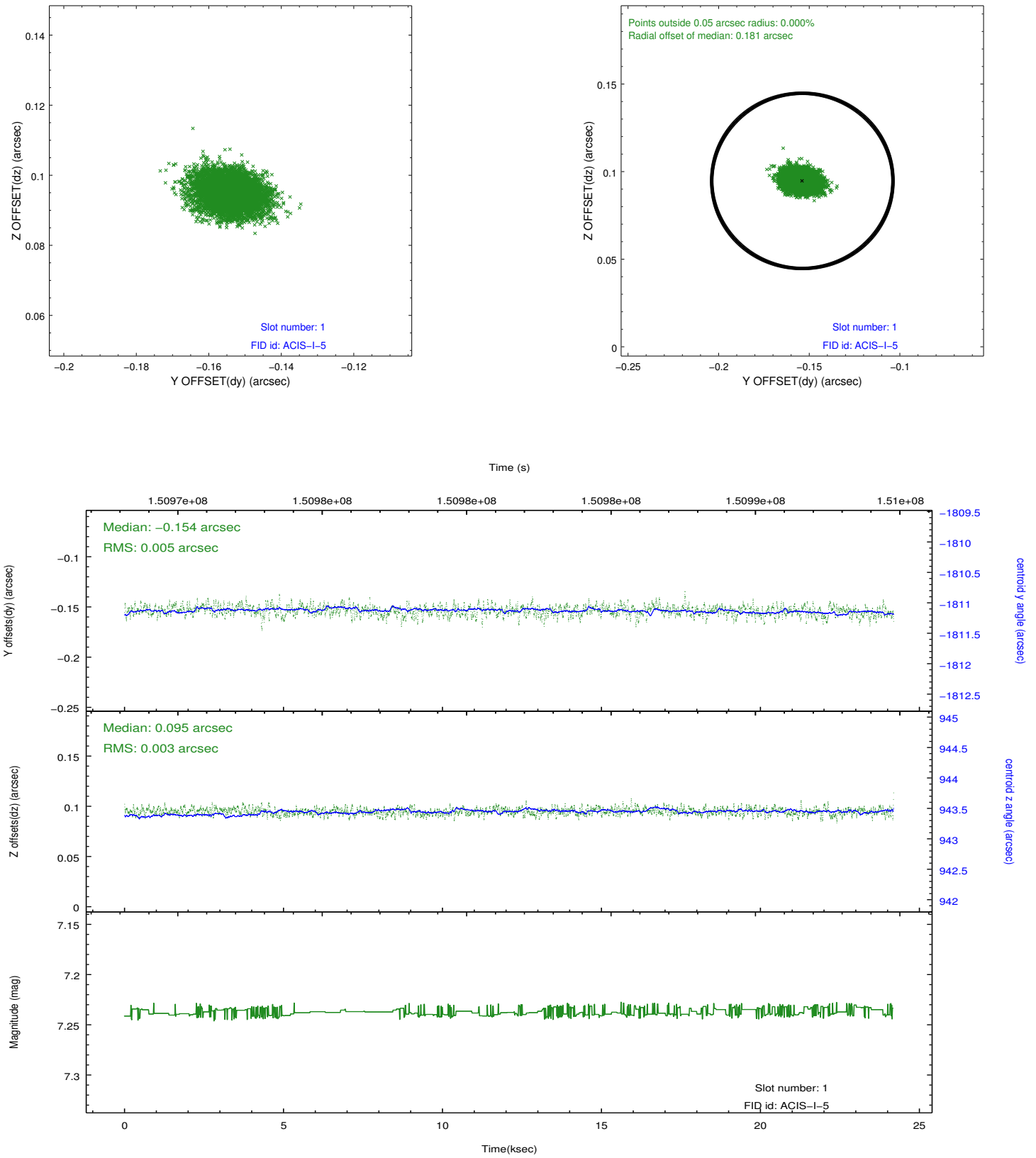


2.5 FID Slots

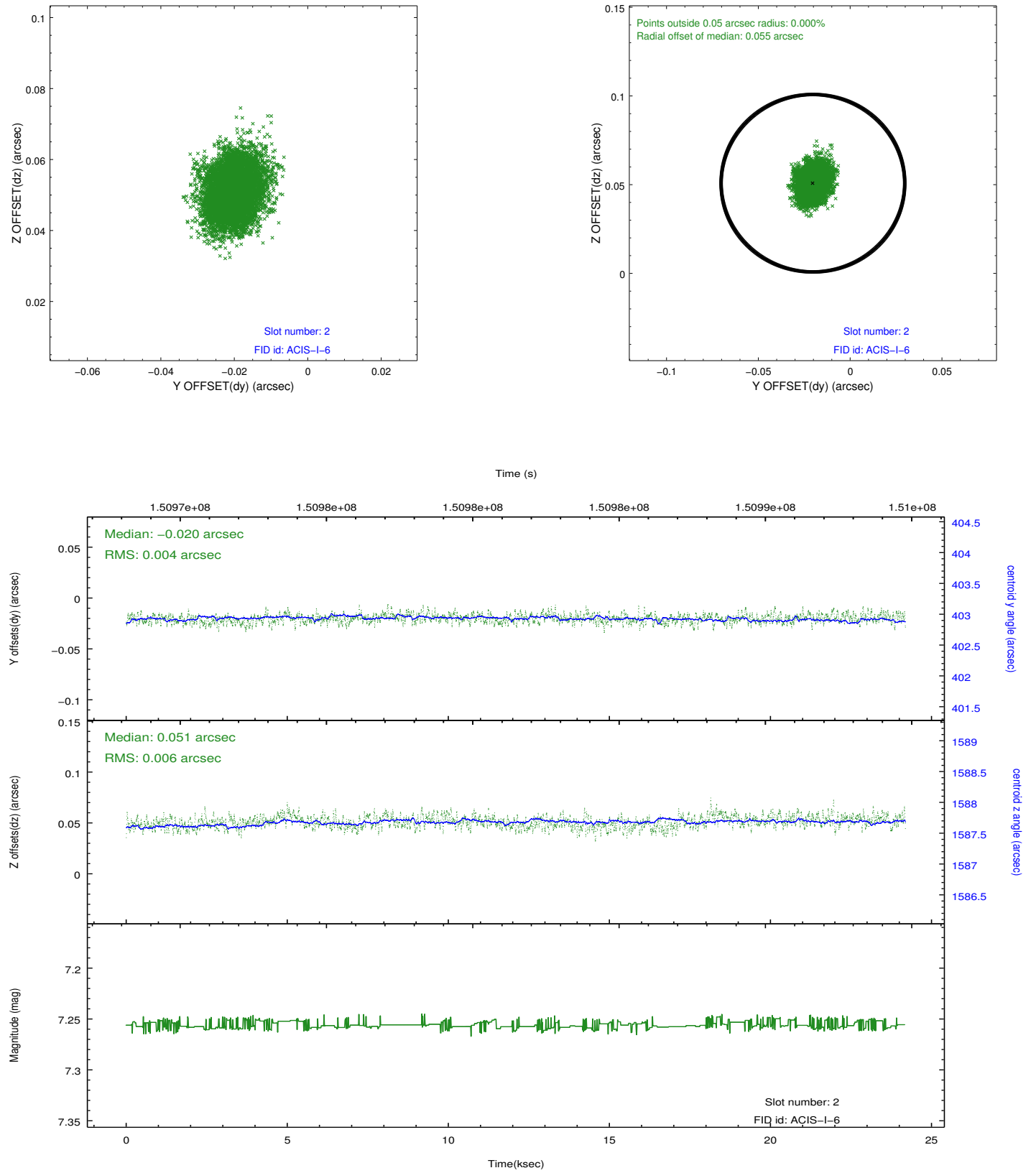
2.5.1 Slot 0



2.5.2 Slot 1



2.5.3 Slot 2



A Summary

A.1 Status

V&V Scientist	Jen Lauer
V&V Date (YYYY-MM-DD)	2012.10.25
V&V Edition	1
V&V Disposition and Status	OK
V&V Charge Time	24.179

A.2 Comments