

V&V Reference Report

L2 ASCDS Version : 8.4.5

Observation 3146 - L2 Version 4
Chandra X-Ray Center

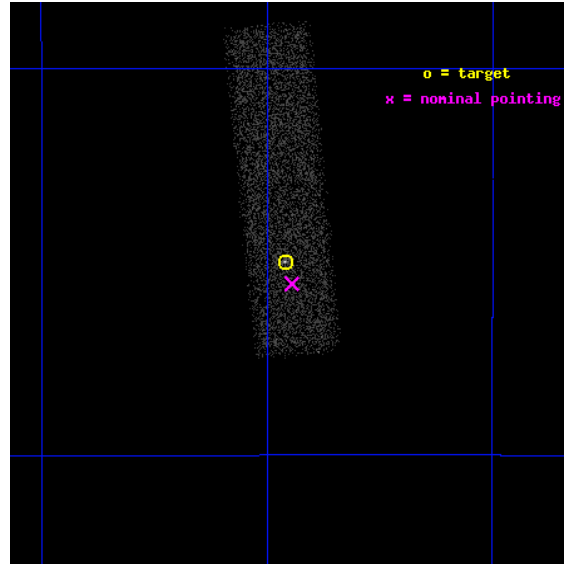
L2 Processing Date : Oct 2 2012

Contents

1	Front	2
2	OBI	3
2.1	OBI	3
2.1.1	Images	3
2.1.2	Bias	3
2.1.3	Parameters	4
2.1.4	Events	4
2.2	Compared Parameters	5
2.3	Aspect	6
2.4	Star Slots	9
2.4.1	Slot 3	9
2.4.2	Slot 4	10
2.4.3	Slot 5	11
2.4.4	Slot 6	12
2.4.5	Slot 7	13
2.5	FID Slots	14
2.5.1	Slot 0	14
2.5.2	Slot 1	15
2.5.3	Slot 2	16
A	Summary	17
A.1	Status	17
A.2	Comments	17

1 Front

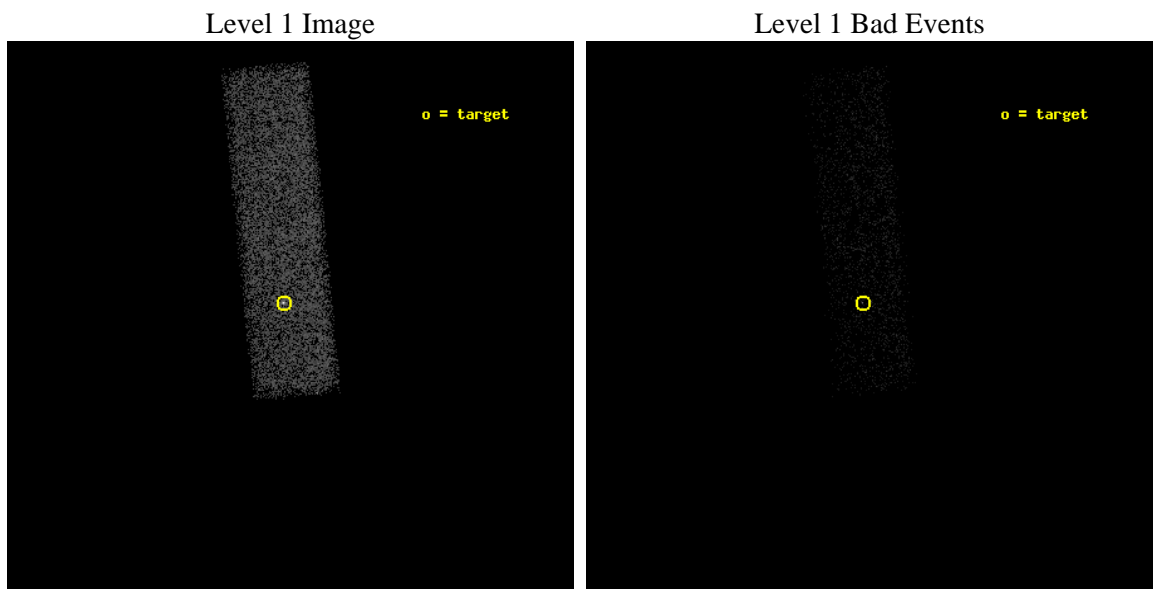
seq_num	700585	Sequence number
obs_id	3146	Observation id
title	MAPPING THE REFLECTING REGIONS IN THE SEYFERT 2 GALAXY TOLOLO 0109-383	Proposal title
observer	Professor Giorgio Matt	Principal investigator
object	TOLOLO 0109-383	Source name
dtcycle	0	
cycle	P	events from which exps? Prim/Second/Both
ra_targ	17.864583	Observer's specified target RA [deg]
dec_targ	-38.083611	Observer's specified target Dec [deg]
ra_nom	17.861305144325	Nominal RA [deg]
dec_nom	-38.092954568939	Nominal Dec [deg]
roll_nom	264.43914069297	Nominal Roll [deg]
revision	4	Processing version of data
ontime	9651.9589439631	Sum of GTIs [s]
livetime	9180.9749300515	Livetime [s]
ontime7	9651.9589439631	Sum of GTIs [s]
l2events	10168	Number of level 2 events



2 OBI

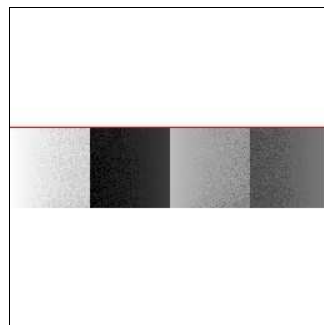
2.1 OBI

2.1.1 Images



2.1.2 Bias

Chip 7



2.1.3 Parameters

obi_num	1	Obi number	sched_exp_time	9500.000000	[s] Scheduled observation exposure time
ascdsver	8.4.5	Processing system revision	ontime	9651.9589439631	Sum of GTIs [s]
caldsver	4.5.2	 	ontime7	9651.9589439631	Sum of GTIs [s]
date	2012-10-02T05:22:07	Date and time of file creation	l1events	23750	Number of level 1 events
revision	4	Processing version of data			

2.1.4 Events

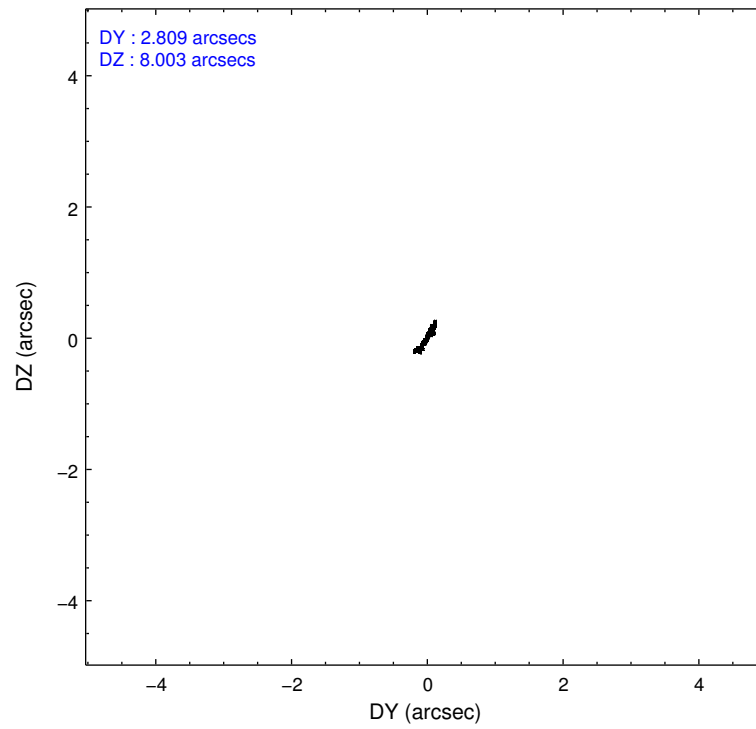
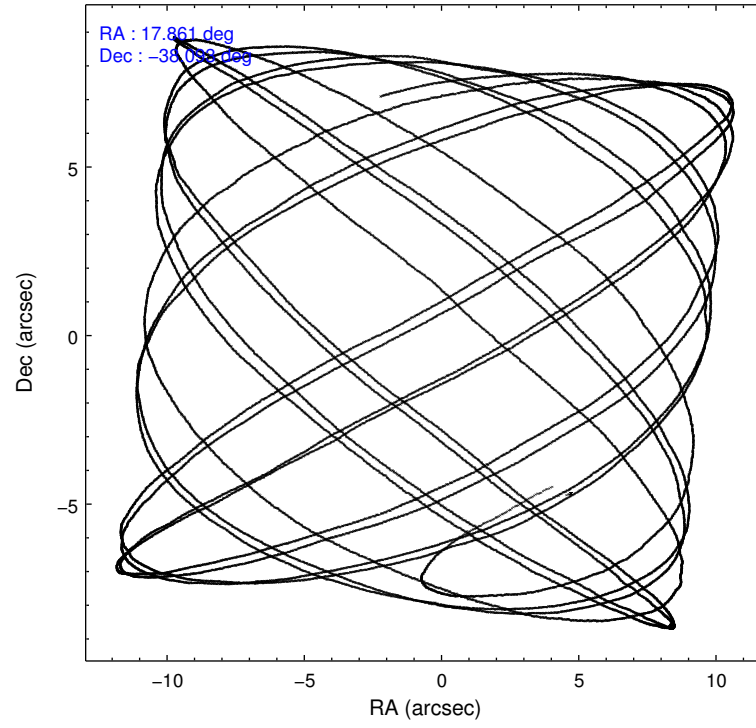
	ccd 7
level 1 events	23750
rejected events	13272
rejected %	55%

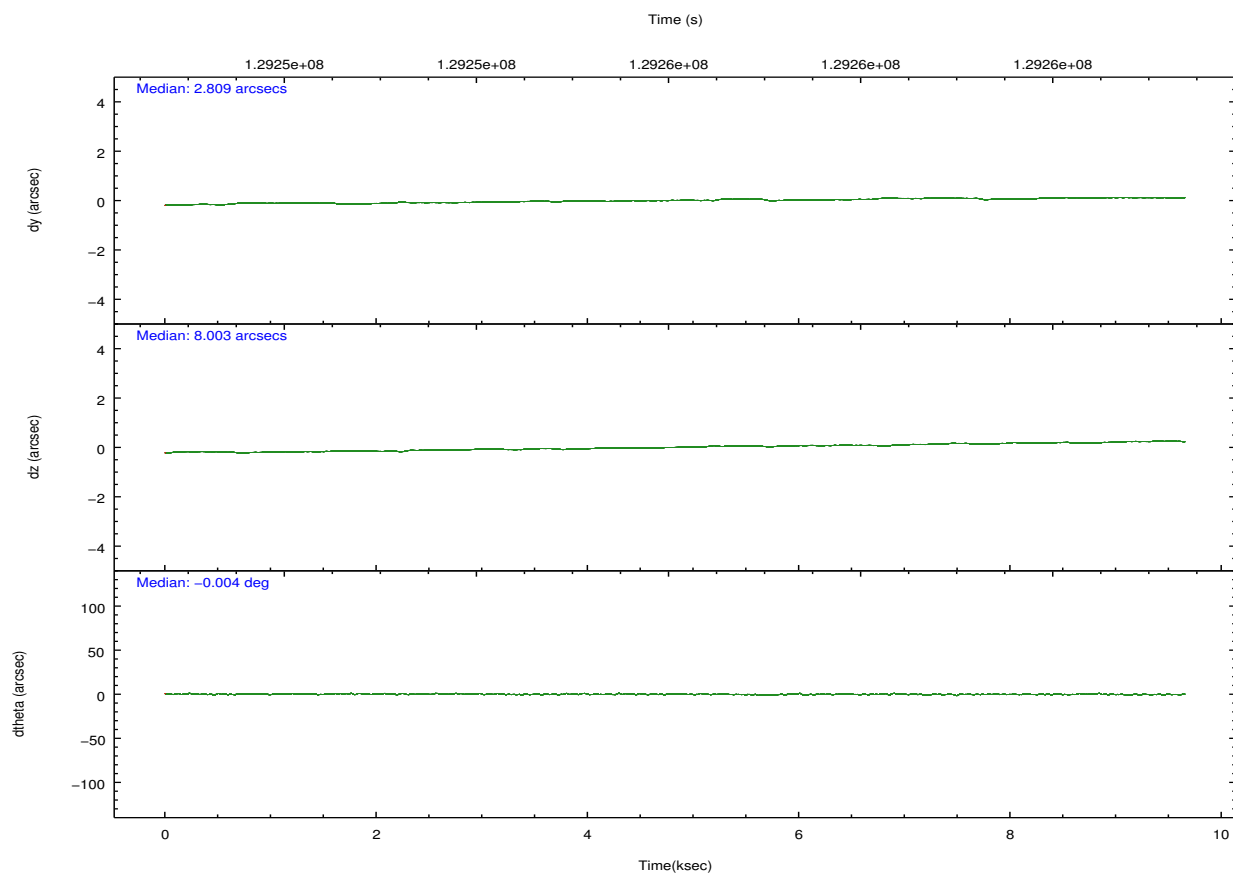
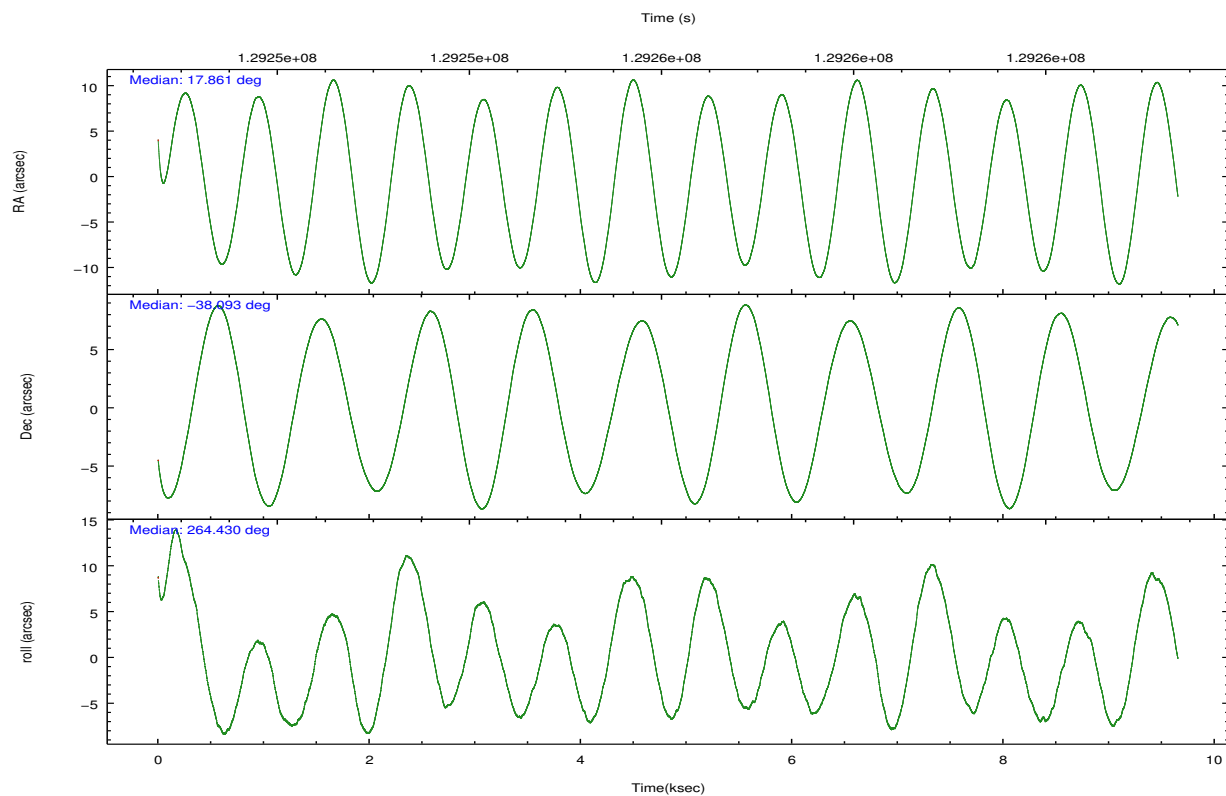
	ccd 7
grade 0 events	1582
	6%
grade 1 events	34
	0%
grade 2 events	2273
	9%
grade 3 events	1244
	5%
grade 4 events	1291
	5%
grade 5 events	2143
	9%
grade 6 events	4923
	20%
grade 7 events	10260
	43%

2.2 Compared Parameters

Parameter	Planned	Actual	Parameter	Planned	Actual
Instrument	ACIS	ACIS	Obspar format version number	7	7
Detector	ACIS-7	ACIS-7	Obspar file type	PREDICTED	ACTUAL
Grating	NONE	NONE	Obspar update status	NONE	UPDATED
Data mode	FAINT	FAINT	Number of optional ACIS chips dropped	0	0
Observation mode	POINTING	POINTING	On-chip summing requested	N	N
[deg] Pointing RA	17.846531	17.86130514432542	Subarray requested	CUSTOM	1/4
[deg] Pointing Dec	-38.068283	-38.09295456893884	Subarray start row	385	385
[deg] Pointing Roll	264.273408	264.4391406929672	Subarray row count	256	256
[mm] SIM focus pos	-0.684267	-0.6828225247311905	Alternating exposures requested	N	N
[mm] SIM defocus	0	0.001444936568705701	[s] Primary exposure time	0.000000	0.8
[mm] SIM translation stage pos	-190.132523	-190.1425803651734			
[mm] SIM translation stage offset	0	0.01005778216563158			
[s] Observation start time (MET)	129251398.184000	129250324.45838			
Observation start date	2002-02-04T23:08:54	2002-02-04T22:52:04			
[s] Observation end time (MET)	129260898.184000	129261504.13383			
Observation end date	2002-02-05T01:47:14	2002-02-05T01:58:24			
Read mode	TIMED	TIMED			

2.3 Aspect



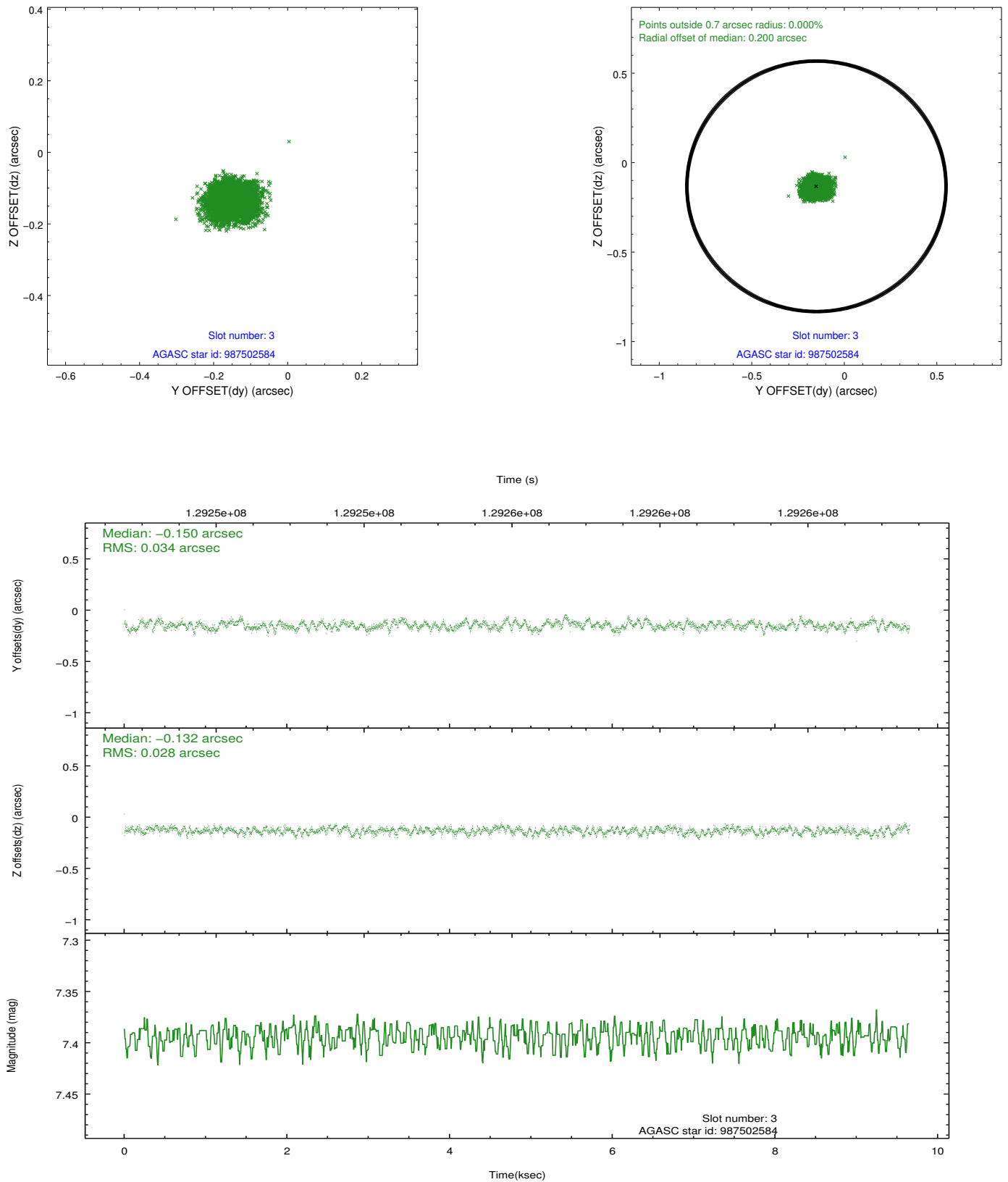


Slot Statistics

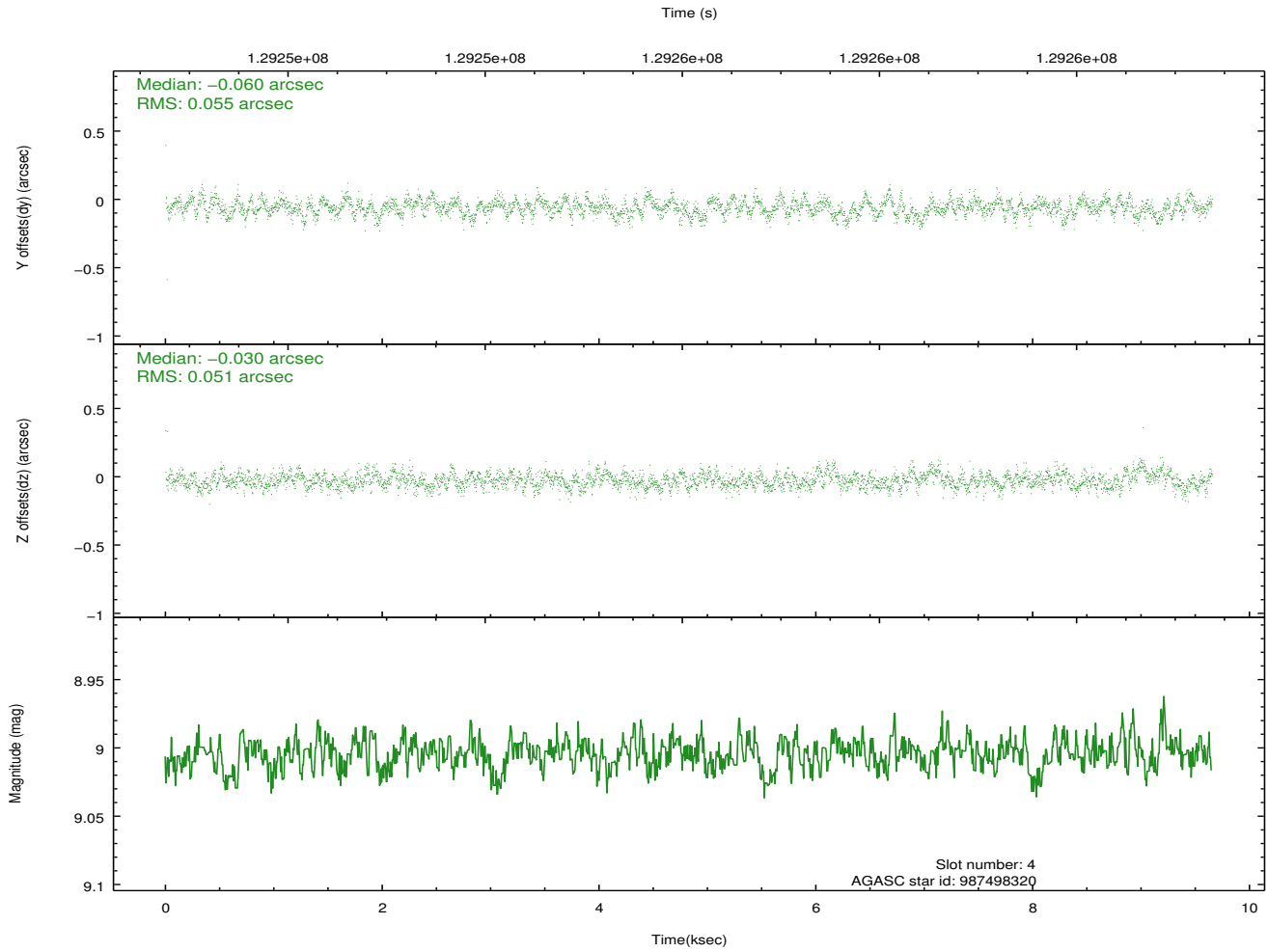
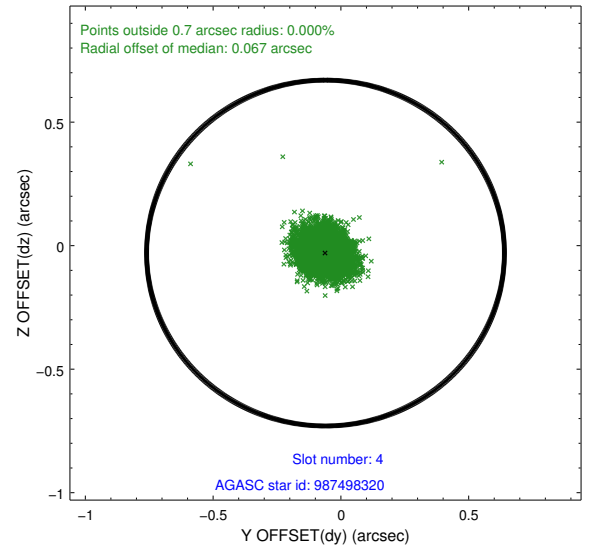
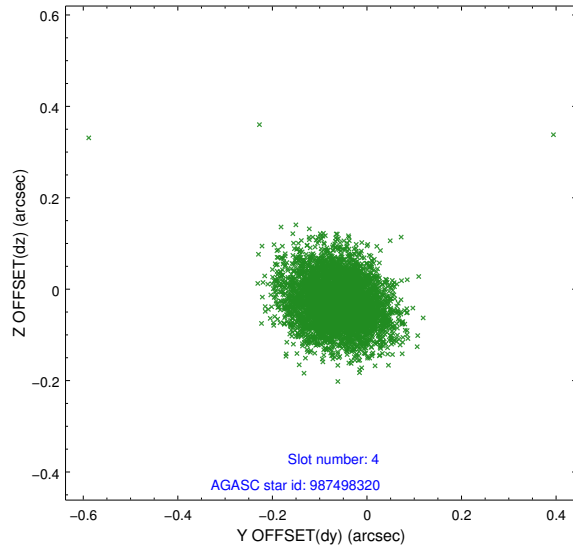
slot	status	id	mag	n_pts	med_dy	med_dz	dr1	dr2	ra	dec	mean_y	mean_z
0	FID	ACIS-S-2	7.11	2355	-0.001	0.002	0.007	0.012	0.000000	0.000000	-755.45	-1729.14
1	FID	ACIS-S-4	7.20	2353	-0.052	0.000	0.006	0.012	0.000000	0.000000	2157.54	178.75
2	FID	ACIS-S-5	7.24	2354	0.022	0.007	0.008	0.014	0.000000	0.000000	-1807.54	173.08
3	GUIDE	987502584	7.39	4709	-0.150	-0.132	0.047	0.074	18.019725	-37.942381	-499.44	444.03
4	GUIDE	987498320	9.00	4707	-0.060	-0.030	0.079	0.128	17.048953	-38.279861	993.05	-2165.30
5	GUIDE	987500352	9.24	4708	0.028	-0.045	0.071	0.115	18.083574	-38.247676	577.12	731.11
6	GUIDE	987497432	9.47	4709	-0.022	-0.037	0.098	0.156	16.990066	-37.898162	-354.63	-2480.63
7	GUIDE	987500192	9.51	4706	0.206	0.248	0.086	0.139	18.583046	-38.783894	2365.55	2314.78

2.4 Star Slots

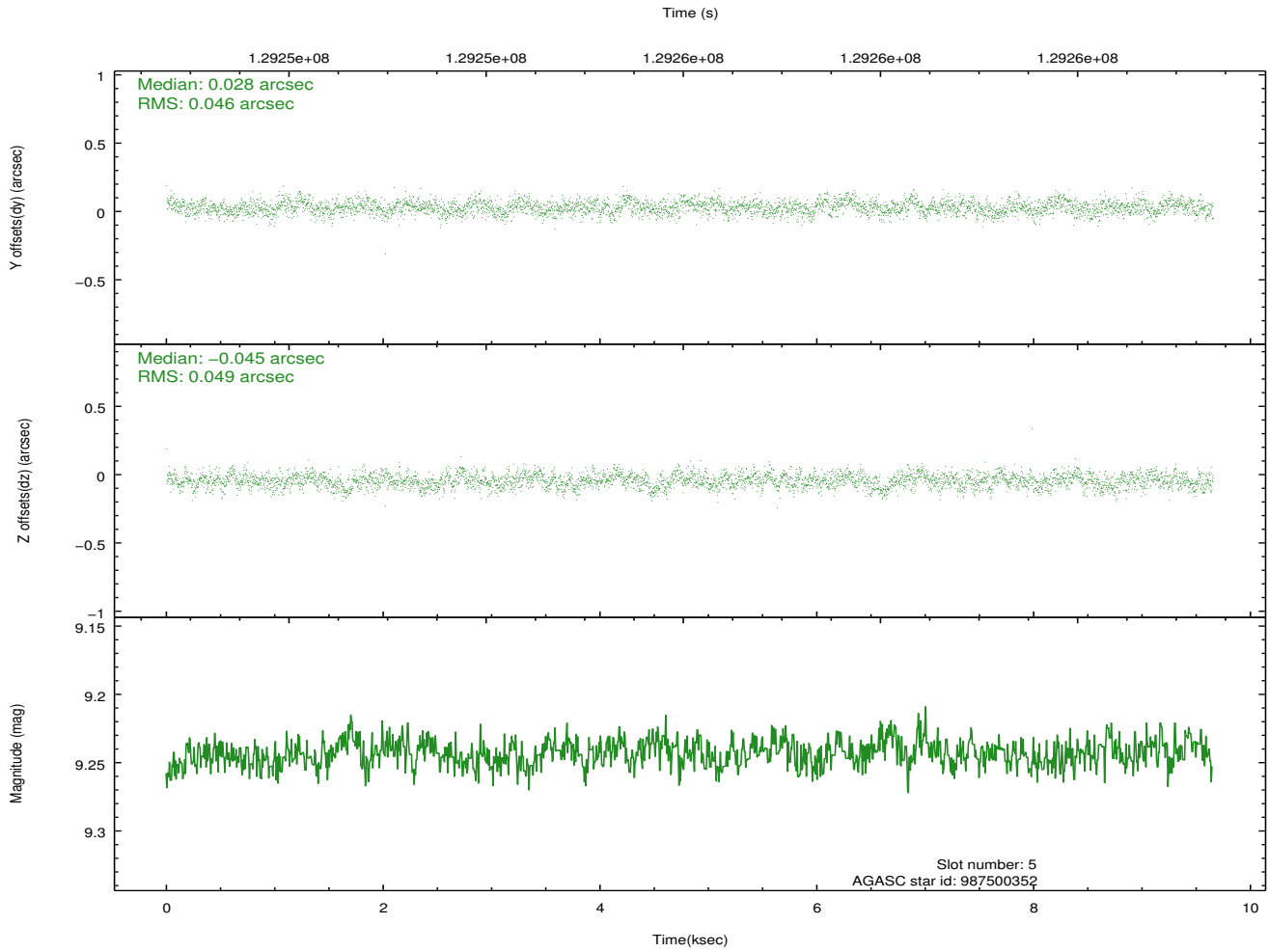
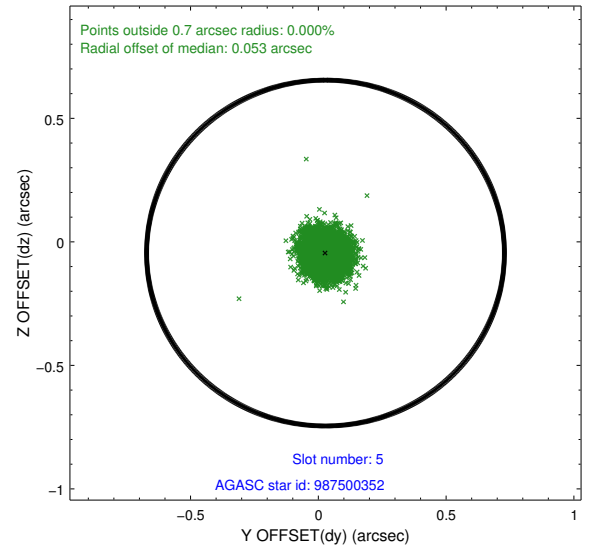
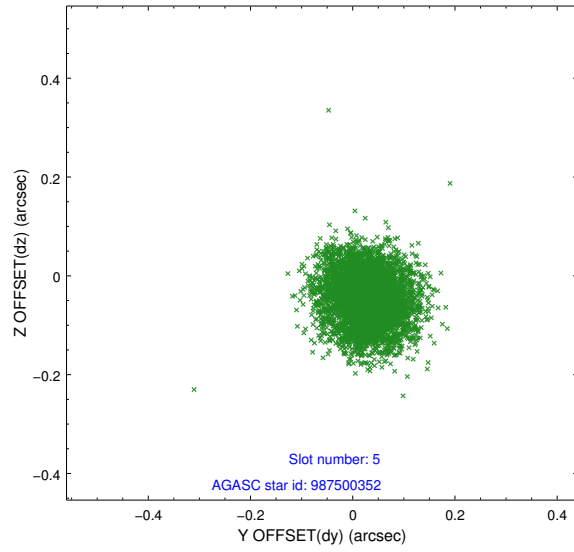
2.4.1 Slot 3



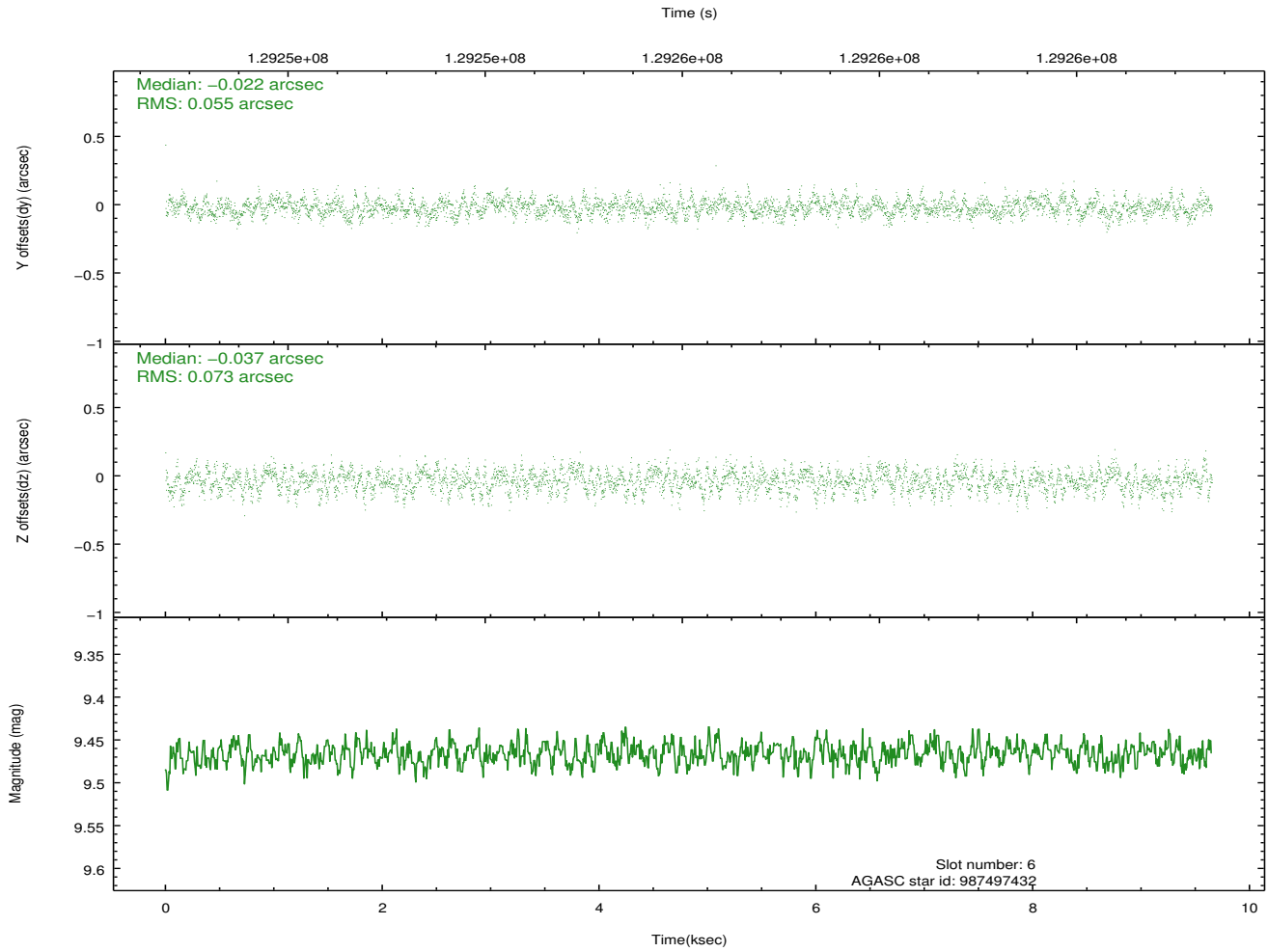
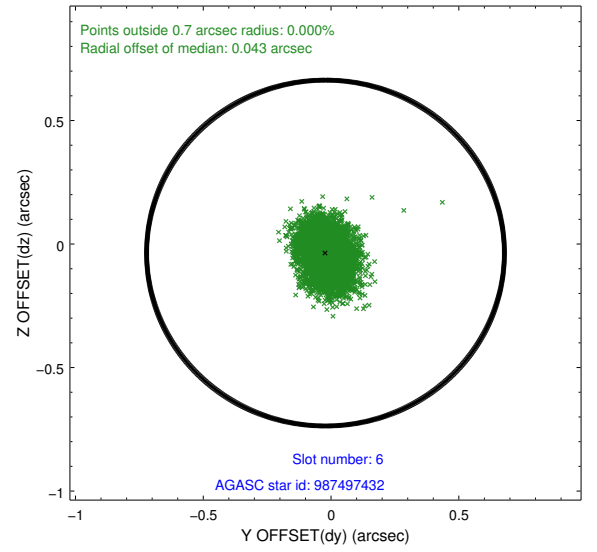
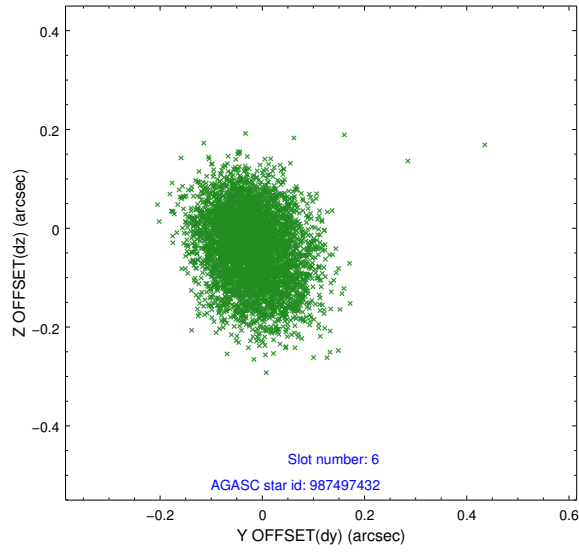
2.4.2 Slot 4



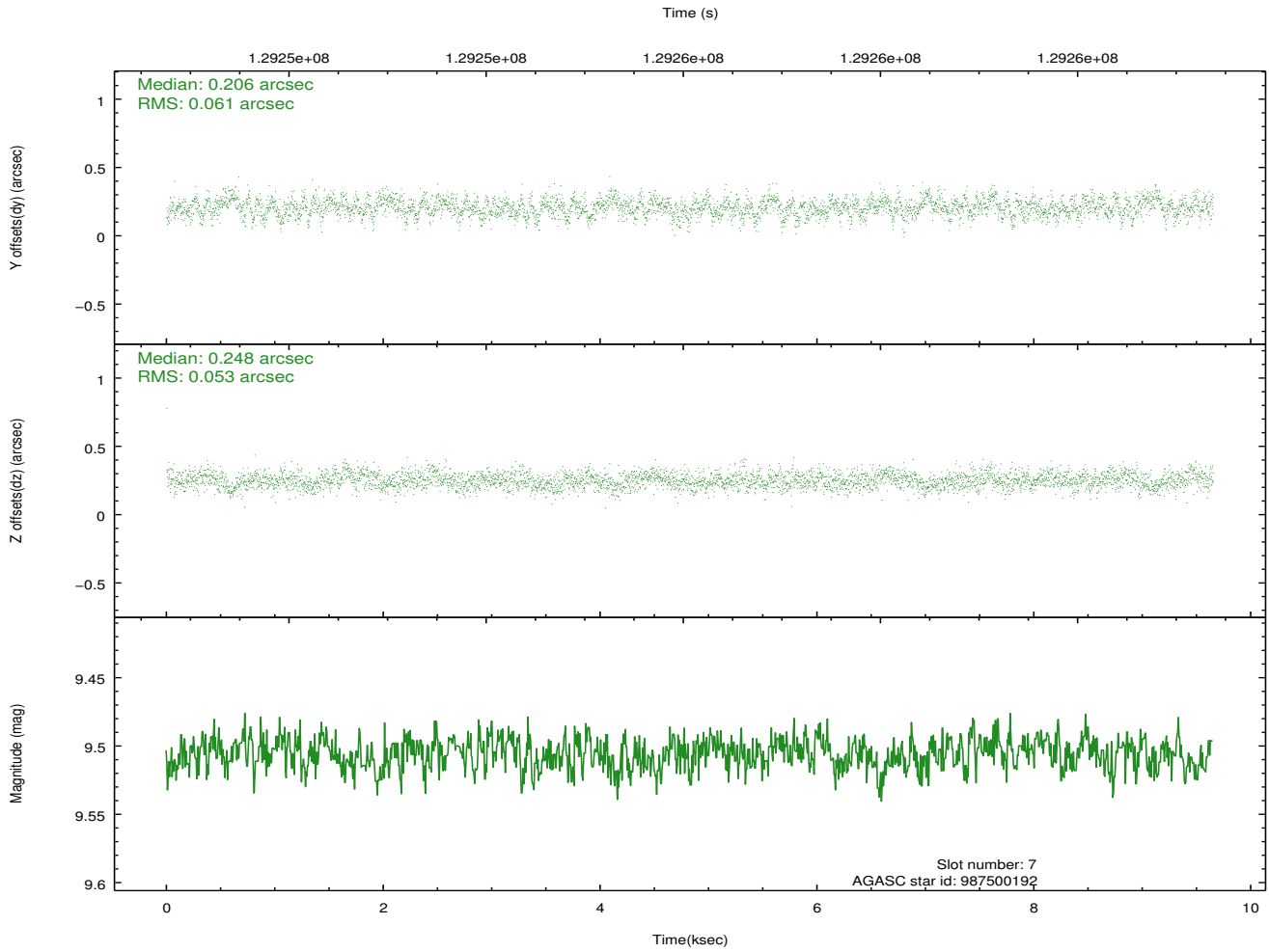
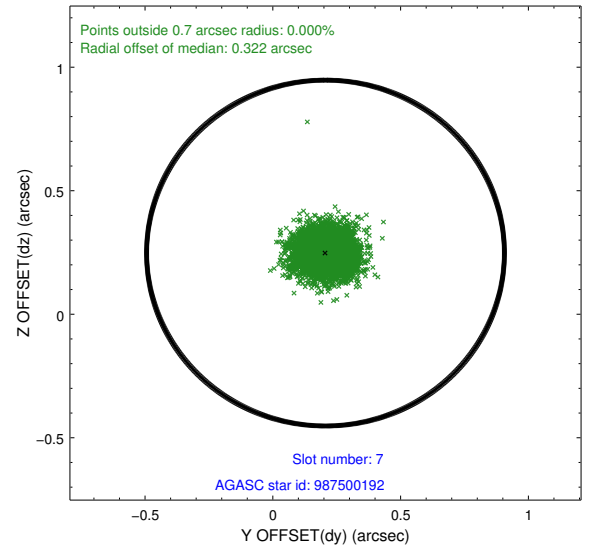
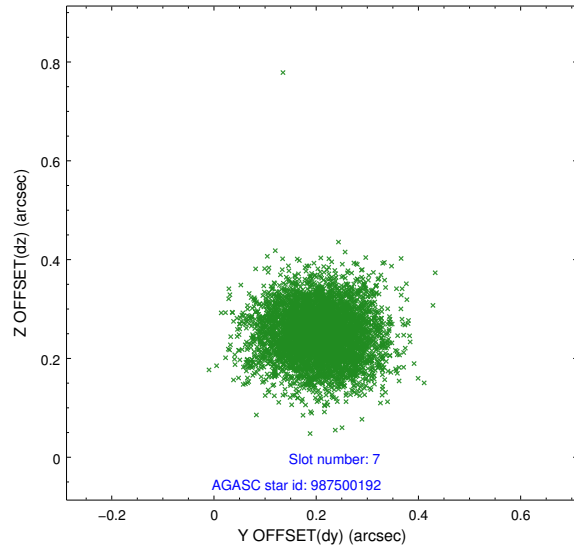
2.4.3 Slot 5



2.4.4 Slot 6

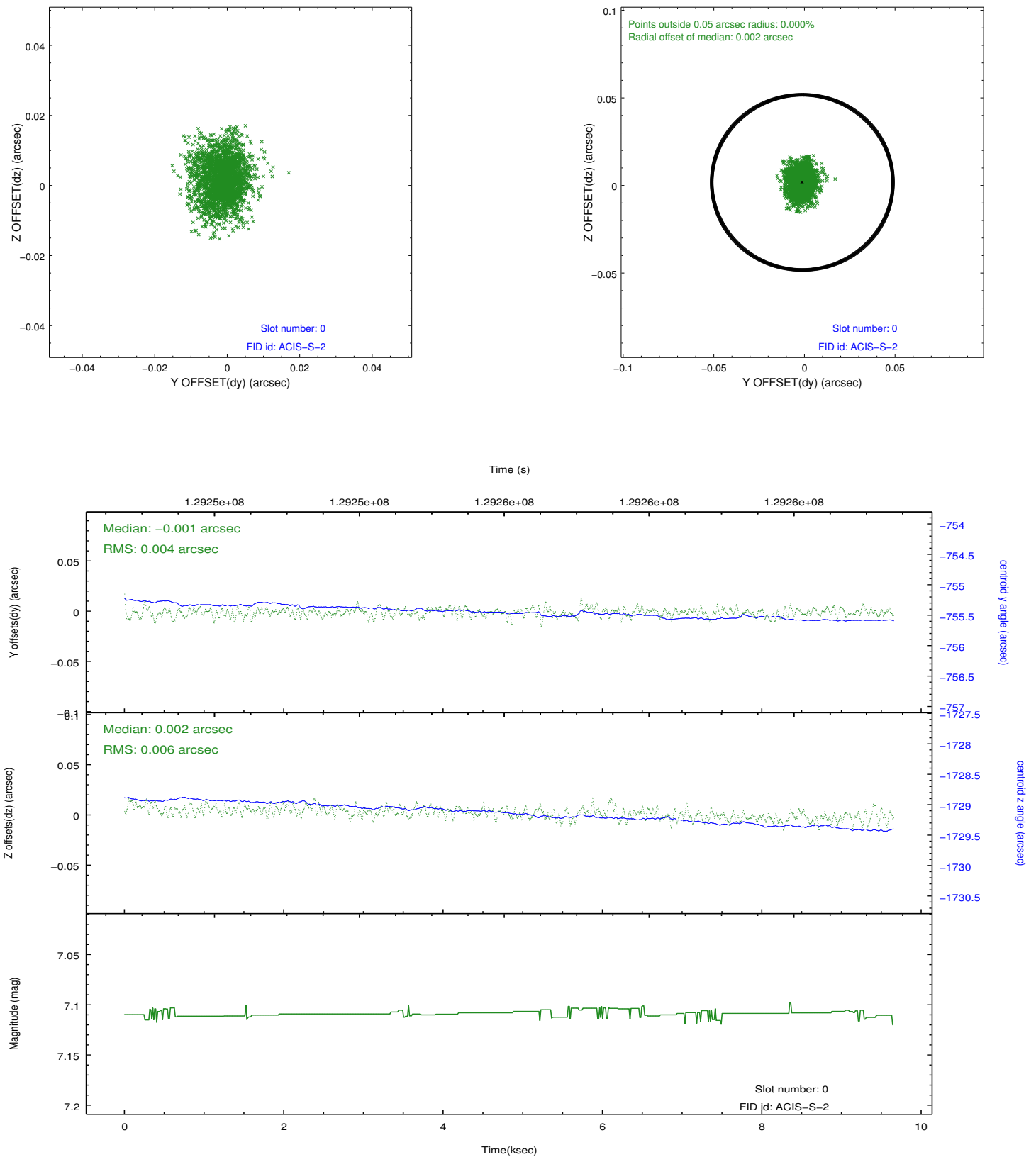


2.4.5 Slot 7

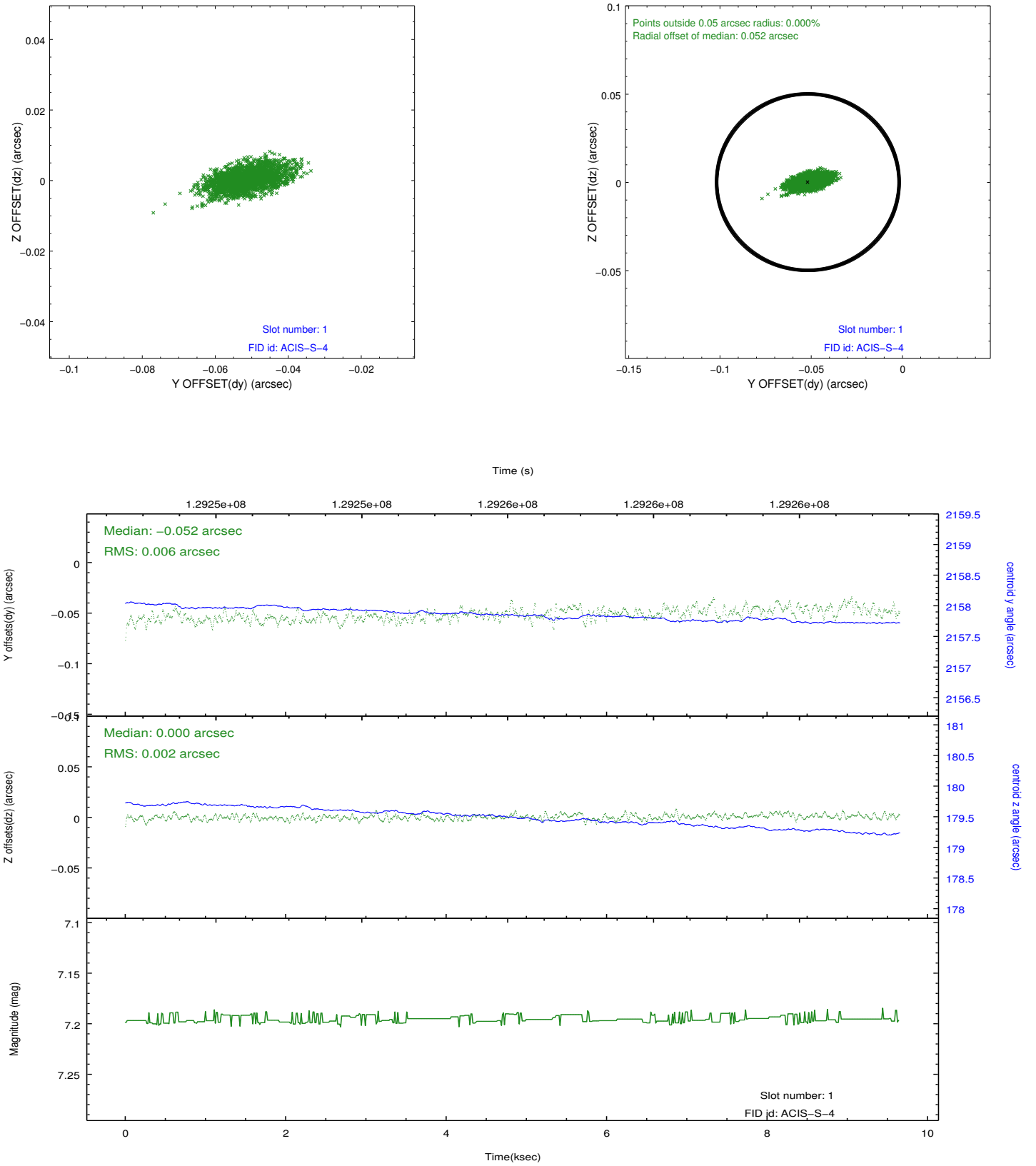


2.5 FID Slots

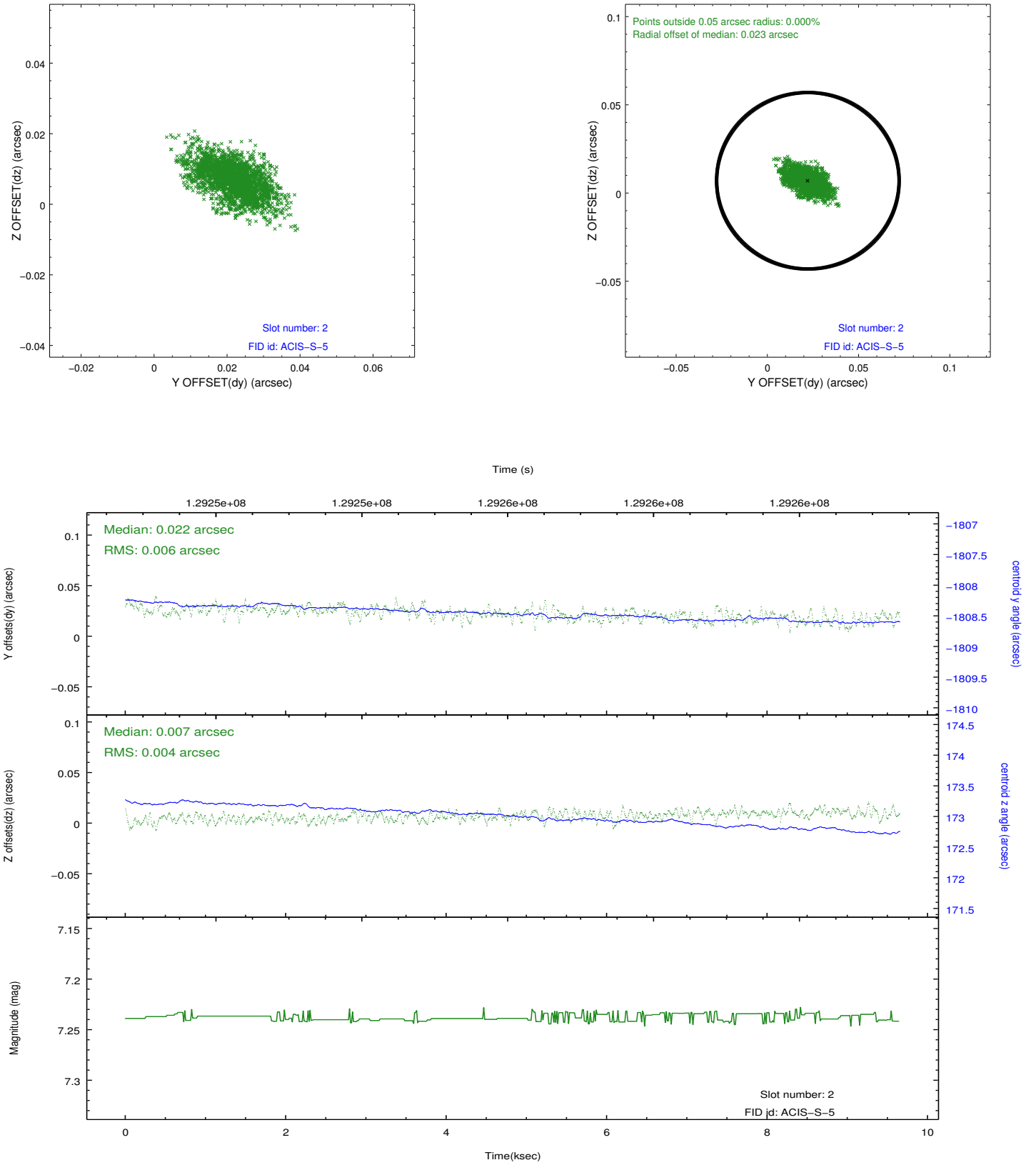
2.5.1 Slot 0



2.5.2 Slot 1



2.5.3 Slot 2



A Summary

A.1 Status

V&V Scientist	Beth Sundheim
V&V Date (YYYY-MM-DD)	2012.10.04
V&V Edition	1
V&V Disposition and Status	OK
V&V Charge Time	9.651

A.2 Comments