

V&V Reference Report

L2 ASCDS Version : 8.4.5

Observation 2986 - L2 Version 3
Chandra X-Ray Center

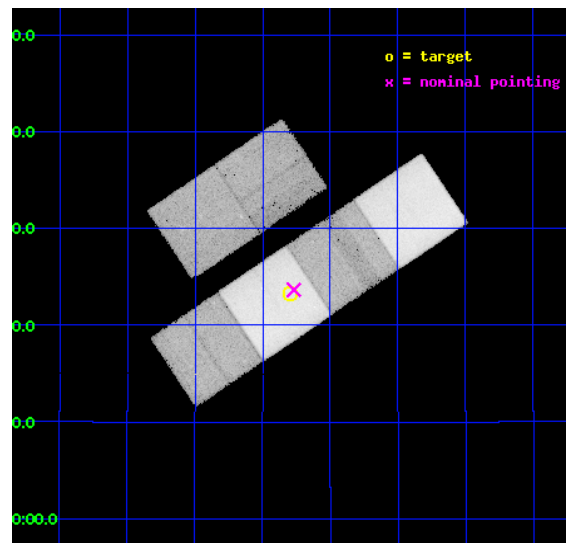
L2 Processing Date : Oct 13 2012

Contents

1	Front	2
2	OBI	3
2.1	OBI	3
2.1.1	Images	3
2.1.2	Bias	3
2.1.3	Parameters	4
2.1.4	Events	4
2.2	Compared Parameters	5
2.3	Aspect	6
2.4	Star Slots	9
2.4.1	Slot 3	9
2.4.2	Slot 4	10
2.4.3	Slot 5	11
2.4.4	Slot 6	12
2.4.5	Slot 7	13
2.5	FID Slots	14
2.5.1	Slot 0	14
2.5.2	Slot 1	15
2.5.3	Slot 2	16
A	Summary	17
A.1	Status	17
A.2	Comments	17

1 Front

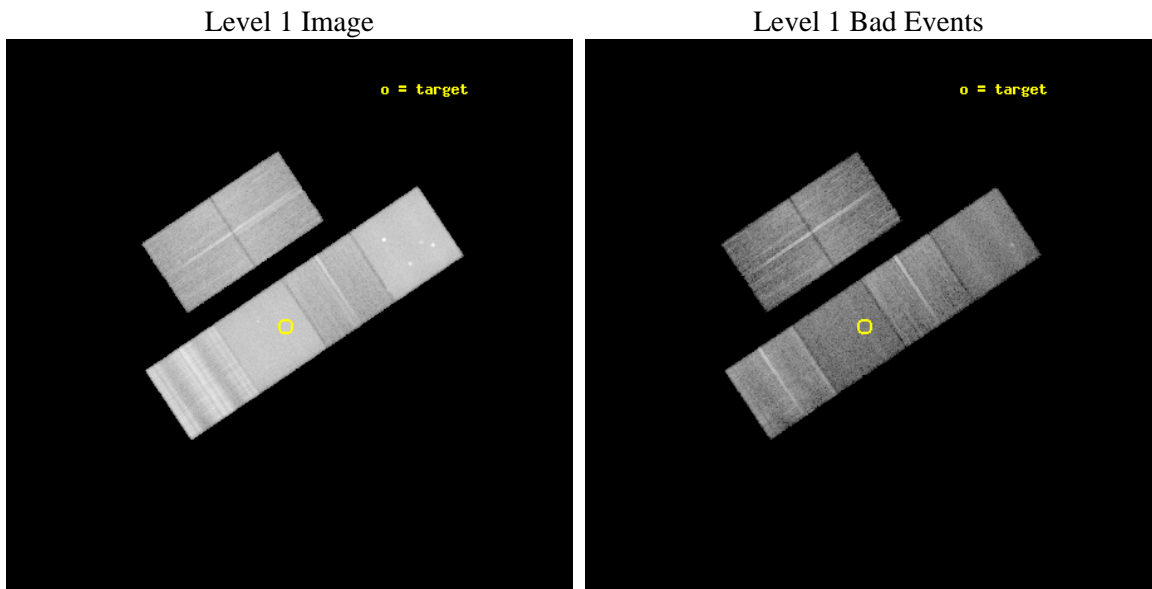
seq_num	700425	Sequence number
obs_id	2986	Observation id
title	CHANDRA OBSERVATIONS OF A POPULATION OF TYPE 2 QUASARS DISCOVERED IN THE DPOSS	Proposal title
observer	PROF. S. DJORGOVSKI	Principal investigator
object	PSS 0008+1923	Source name
dtcycle	0	
cycle	P	events from which exps? Prim/Second/Both
ra_targ	2.199583	Observer's specified target RA [deg]
dec_targ	19.387778	Observer's specified target Dec [deg]
ra_nom	2.1921772677262	Nominal RA [deg]
dec_nom	19.394488261243	Nominal Dec [deg]
roll_nom	146.12180960038	Nominal Roll [deg]
revision	3	Processing version of data
ontime	14392.680925697	Sum of GTIs [s]
livetime	14210.432133584	Livetime [s]
ontime2	14392.7219657	Sum of GTIs [s]
ontime3	14392.557805687	Sum of GTIs [s]
ontime5	14392.639885694	Sum of GTIs [s]
ontime6	14392.59884569	Sum of GTIs [s]
ontime7	14392.680925697	Sum of GTIs [s]
ontime8	14392.516765714	Sum of GTIs [s]
l2events	531796	Number of level 2 events



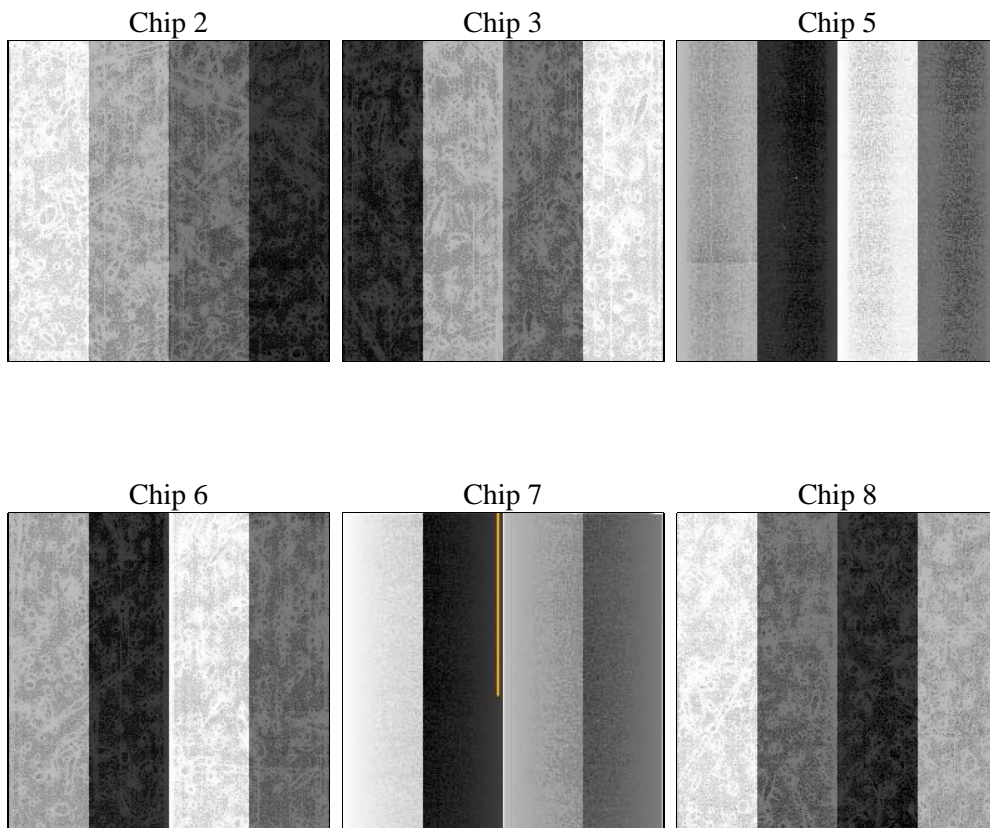
2 OBI

2.1 OBI

2.1.1 Images



2.1.2 Bias



2.1.3 Parameters

obi_num	1	Obi number	sched_exp_time	14432.834000	[s] Scheduled observation exposure time
ascdsver	8.4.5	Processing system revision	ontime	14392.680925697	Sum of GTIs [s]
caldsver	4.5.2	 	ontime2	14392.7219657	Sum of GTIs [s]
date	2012-10-13T06:07:31	Date and time of file creation	ontime3	14392.557805687	Sum of GTIs [s]
revision	3	Processing version of data	ontime5	14392.639885694	Sum of GTIs [s]
			ontime6	14392.59884569	Sum of GTIs [s]
			ontime7	14392.680925697	Sum of GTIs [s]
			ontime8	14392.516765714	Sum of GTIs [s]
			l1events	1366281	Number of level 1 events

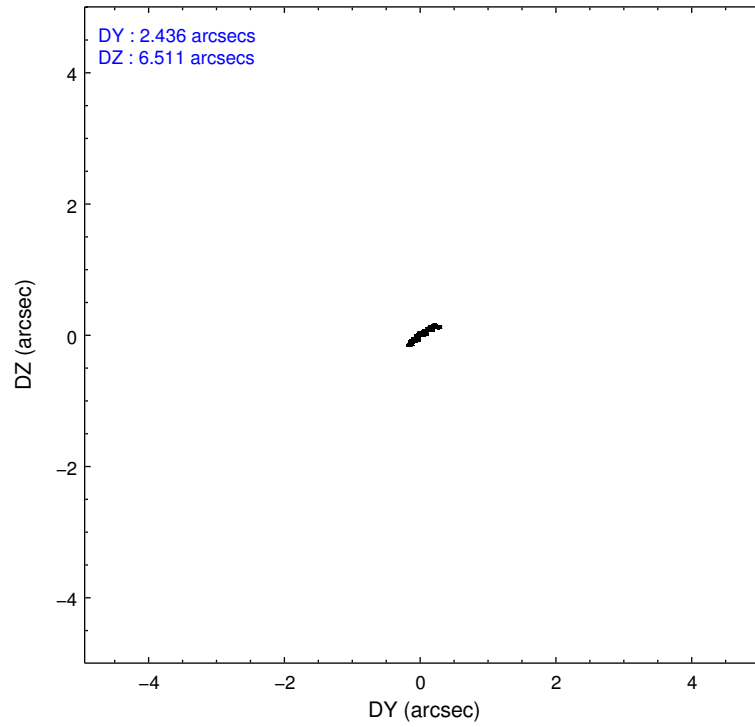
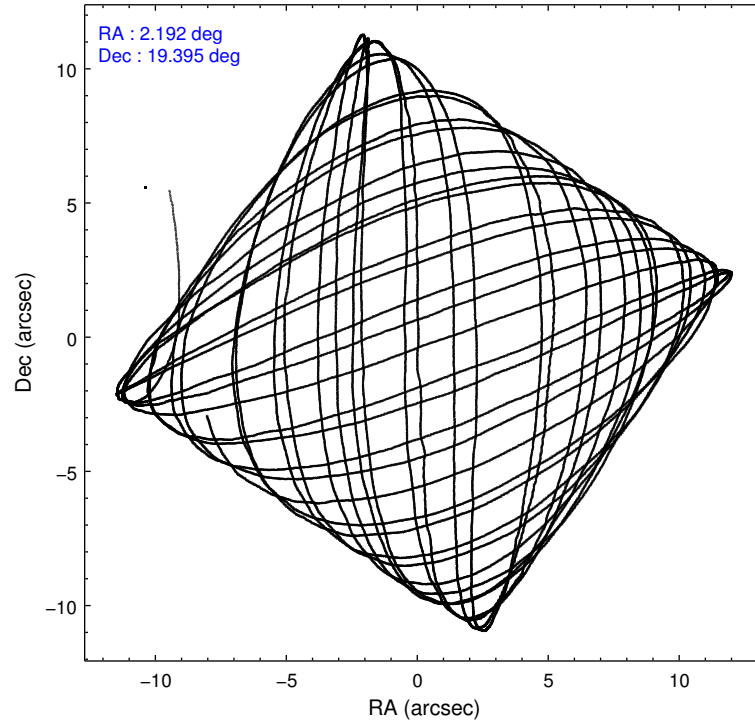
2.1.4 Events

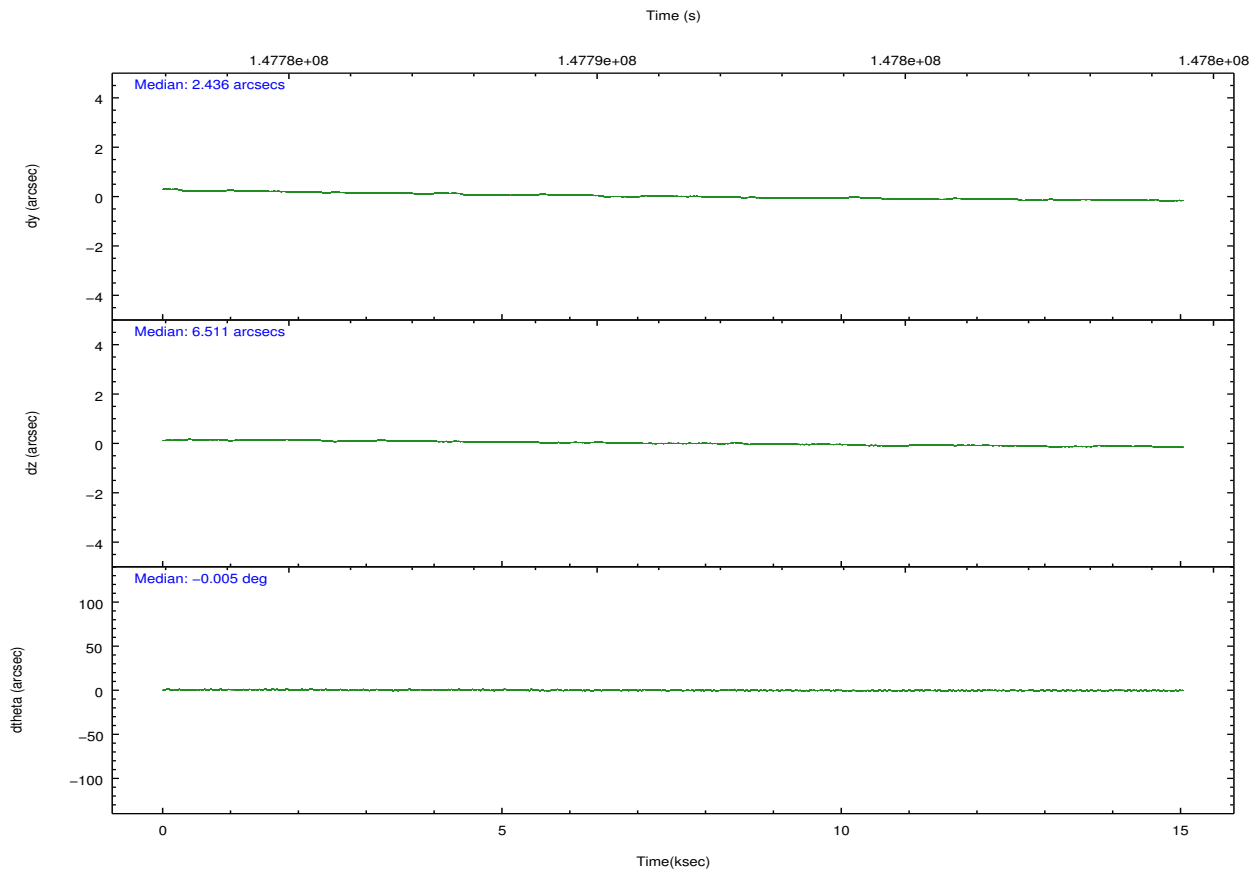
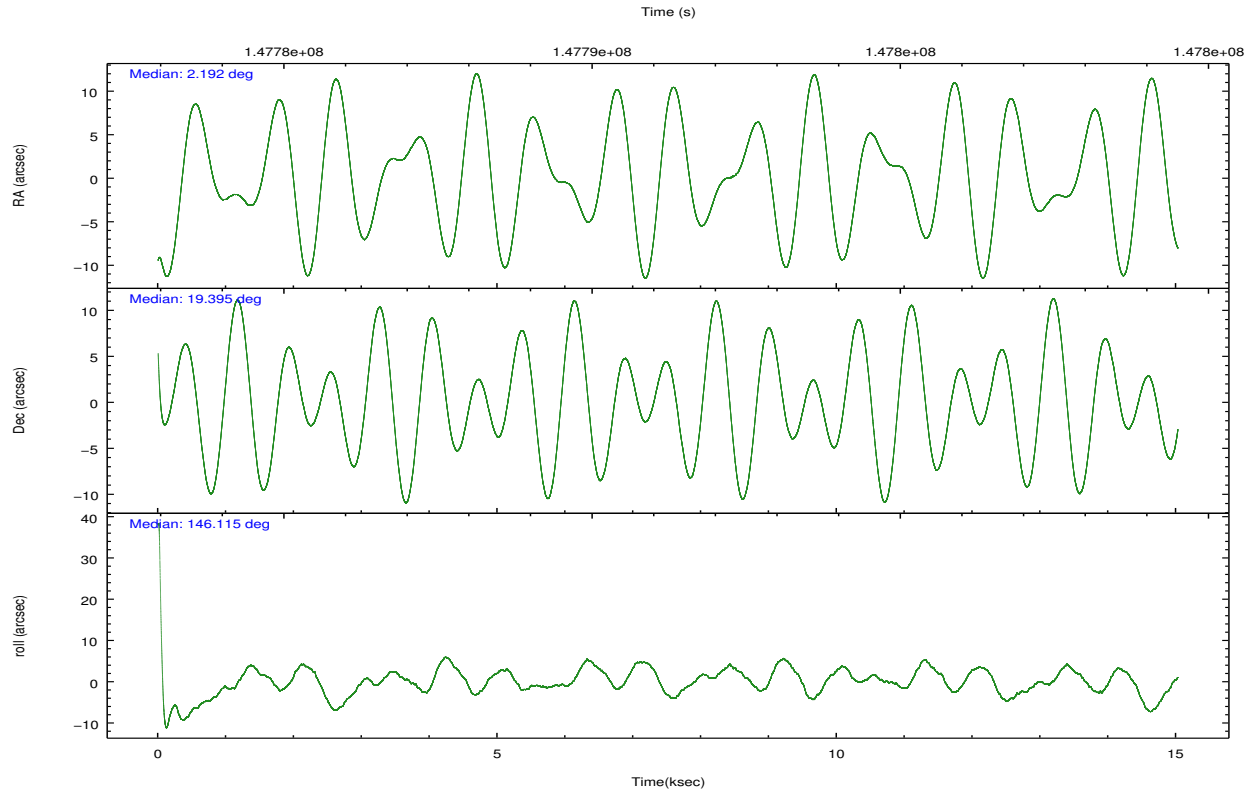
	ccd 2	ccd 3	ccd 5	ccd 6	ccd 7	ccd 8		ccd 2	ccd 3	ccd 5	ccd 6	ccd 7	ccd 8
level 1 events	152405	143919	301362	159218	274957	334420	grade 0 events	23013	20682	33488	27223	21480	75715
rejected events	114136	108367	94382	115338	78999	131818		15%	14%	11%	17%	7%	22%
rejected %	74%	75%	31%	72%	28%	39%	grade 1 events	155	134	317	170	180	550
								0%	0%	0%	0%	0%	0%
							grade 2 events	7140	6786	58608	8602	35569	26230
								4%	4%	19%	5%	12%	7%
							grade 3 events	1591	1631	12450	1654	15293	33728
								1%	1%	4%	1%	5%	10%
							grade 4 events	2169	1721	12038	1743	15149	29970
								1%	1%	3%	1%	5%	8%
							grade 5 events	3710	3825	12382	4099	12812	6961
								2%	2%	4%	2%	4%	2%
							grade 6 events	4382	4757	90512	4692	108585	37037
								2%	3%	30%	2%	39%	11%
							grade 7 events	110245	104383	81567	111035	65889	124229
								72%	72%	27%	69%	23%	37%

2.2 Compared Parameters

Parameter	Planned	Actual	Parameter	Planned	Actual
Instrument	ACIS	ACIS	Obspar format version number	7	7
Detector	ACIS-235678	ACIS-235678	Obspar file type	PREDICTED	ACTUAL
Grating	NONE	NONE	Obspar update status	NONE	UPDATED
Data mode	FAINT	FAINT	Number of optional ACIS chips dropped	0	0
Observation mode	POINTING	POINTING	On-chip summing requested	N	N
[deg] Pointing RA	2.221037	2.192177267726208	Subarray requested	NONE	NONE
[deg] Pointing Dec	19.393021	19.39448826124295	Alternating exposures requested	N	N
[deg] Pointing Roll	145.955553	146.1218096003784	[s] Primary exposure time	0.000000	3.2
[mm] SIM focus pos	-0.684267	-0.6828225247311905			
[mm] SIM defocus	0	0.001444936568705701			
[mm] SIM translation stage pos	-190.132523	-190.145094680475			
[mm] SIM translation stage offset	0	0.01257209746719923			
[s] Observation start time (MET)	147784315.184000	147783143.16487			
Observation start date	2002-09-07T11:10:51	2002-09-07T10:52:23			
[s] Observation end time (MET)	147798748.184000	147799496.52804			
Observation end date	2002-09-07T15:11:24	2002-09-07T15:24:56			
Read mode	TIMED	TIMED			

2.3 Aspect



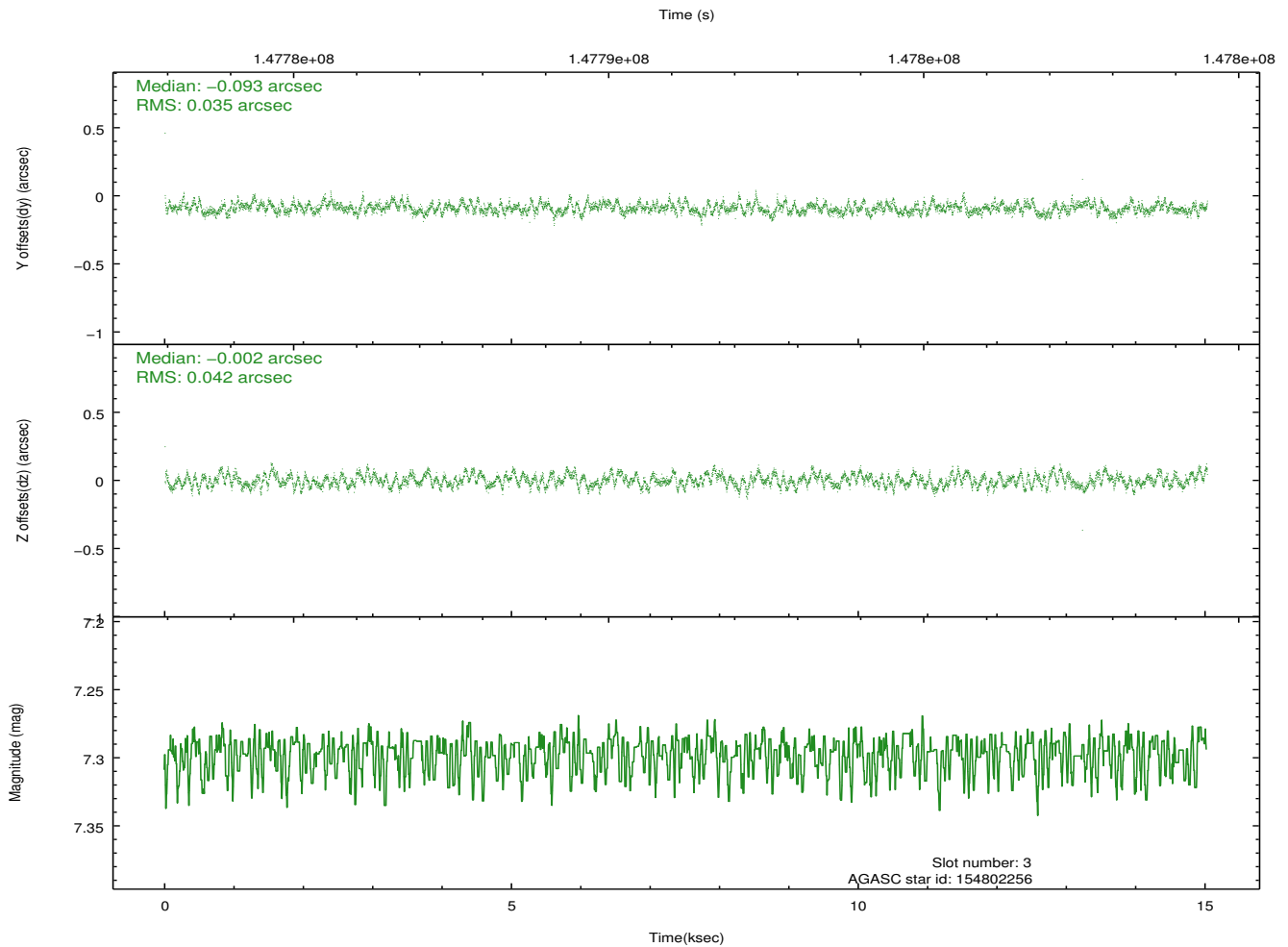
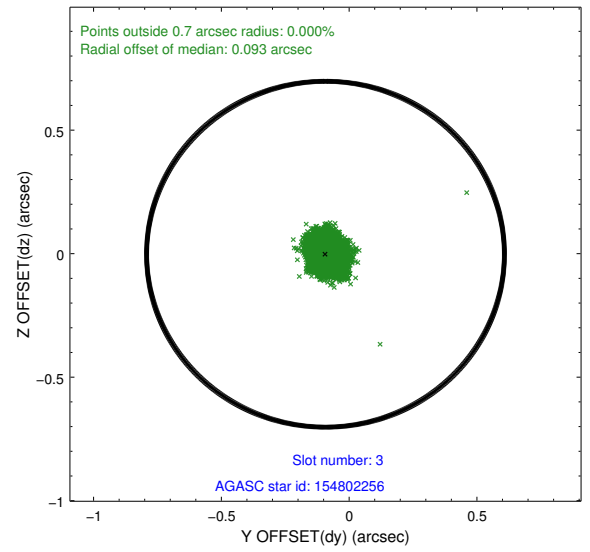
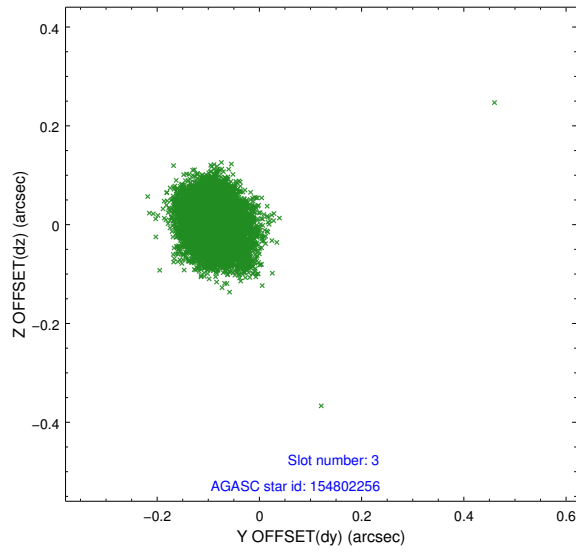


Slot Statistics

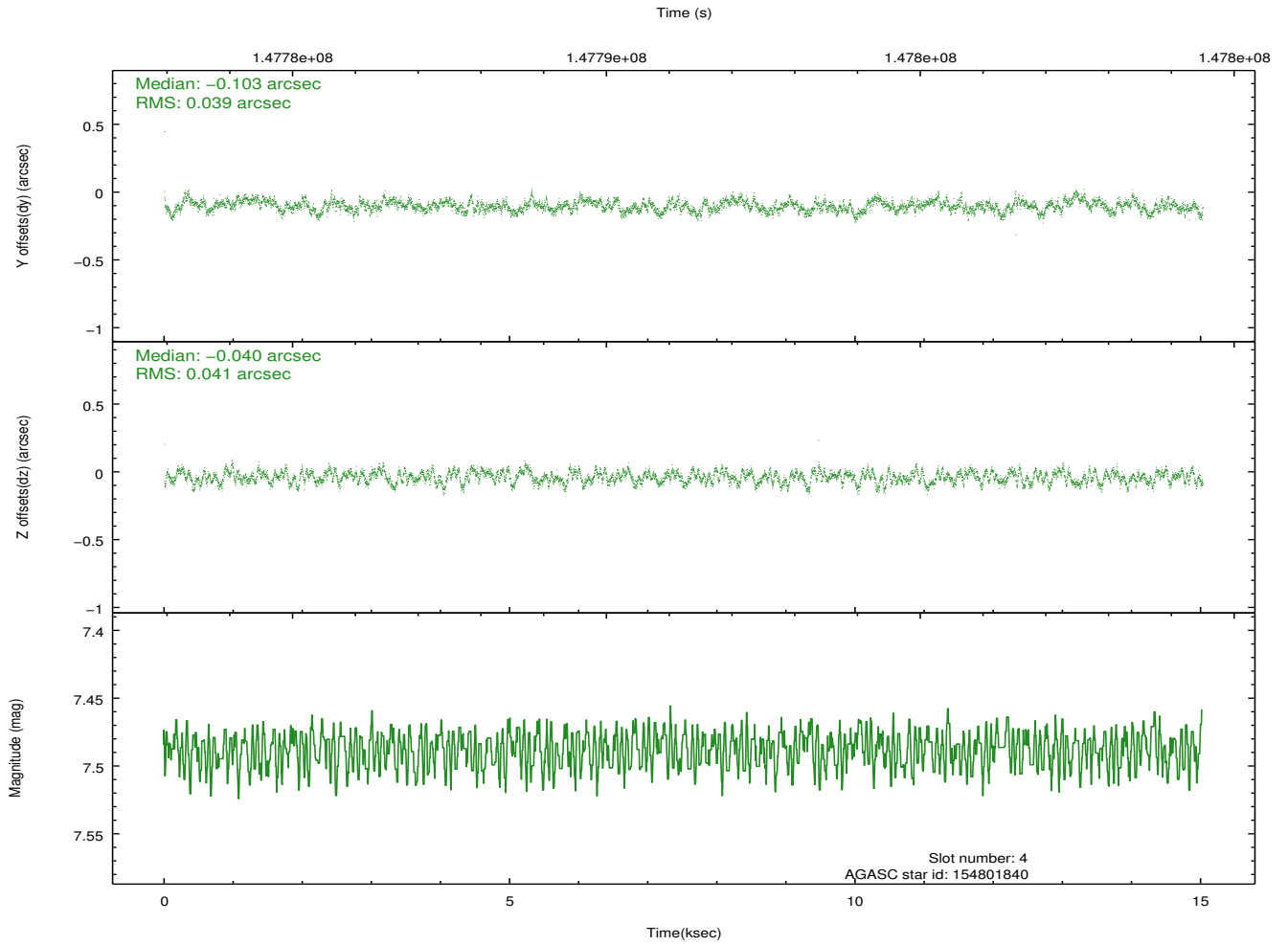
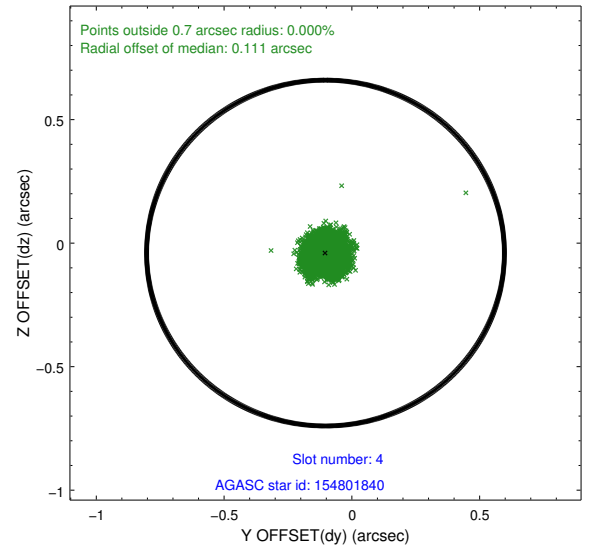
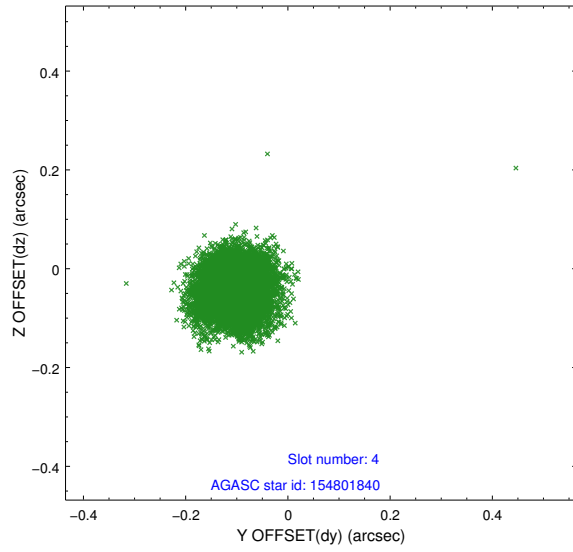
slot	status	id	mag	n_pts	med_dy	med_dz	dr1	dr2	ra	dec	mean_y	mean_z
0	FID	ACIS-S-2	7.11	3666	-0.040	0.011	0.007	0.011	0.000000	0.000000	-755.10	-1727.56
1	FID	ACIS-S-4	7.20	3666	-0.013	0.016	0.006	0.011	0.000000	0.000000	2158.04	180.66
2	FID	ACIS-S-5	7.24	3666	0.021	-0.018	0.009	0.015	0.000000	0.000000	-1807.52	174.58
3	GUIDE	154802256	7.30	7332	-0.093	-0.002	0.058	0.091	2.267963	19.924686	939.36	-1674.57
4	GUIDE	154801840	7.49	7332	-0.103	-0.040	0.062	0.094	2.379255	19.559095	-110.61	-796.00
5	GUIDE	154803008	8.59	7332	0.083	0.022	0.061	0.097	2.452046	19.381170	-674.43	-404.15
6	GUIDE	155193224	9.12	7329	0.032	0.025	0.110	0.188	2.130274	20.267286	2015.58	-2435.90
7	GUIDE	154933224	9.89	7323	0.086	-0.001	0.116	0.190	2.811766	19.395438	-1655.54	-1133.30

2.4 Star Slots

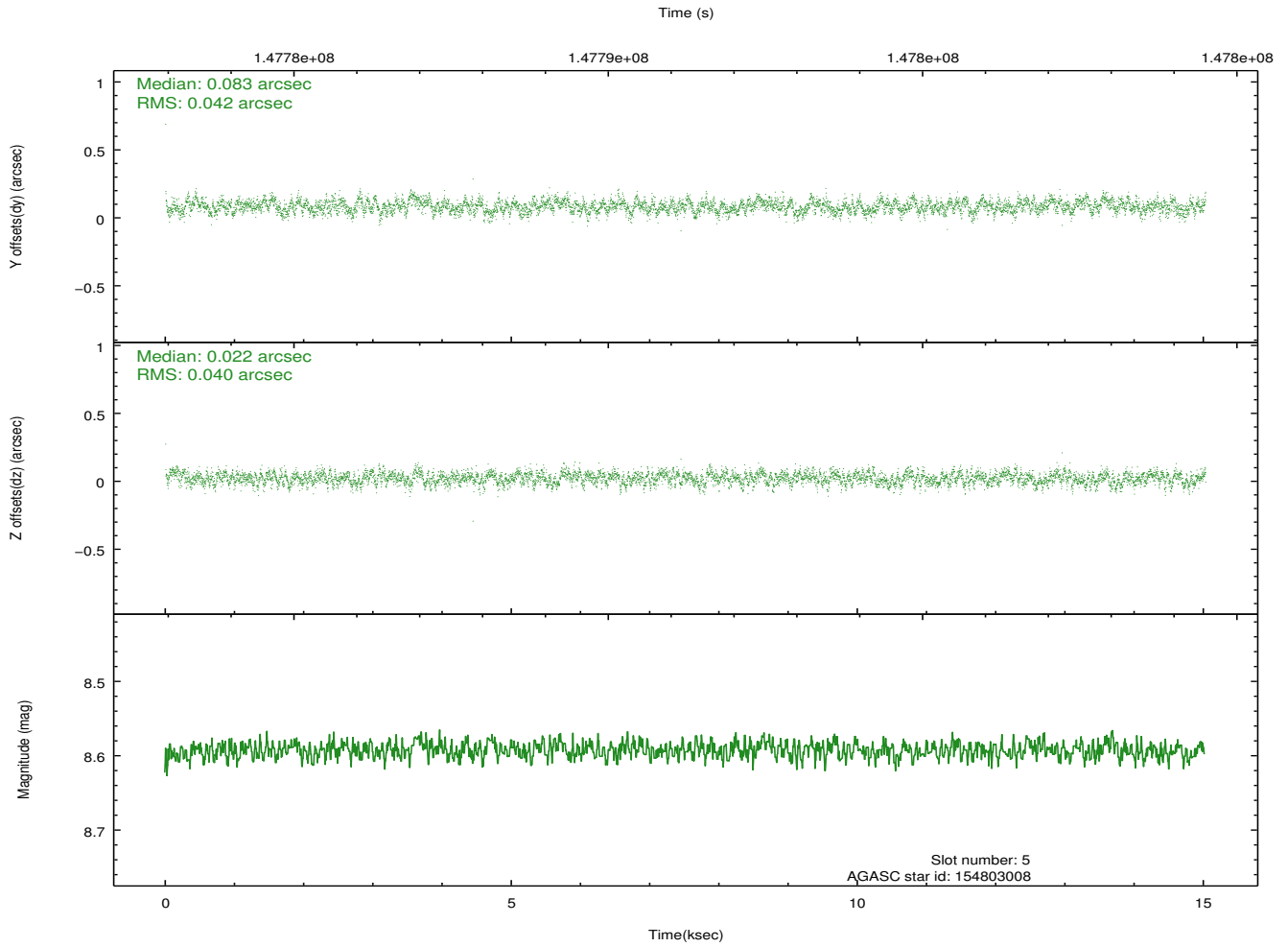
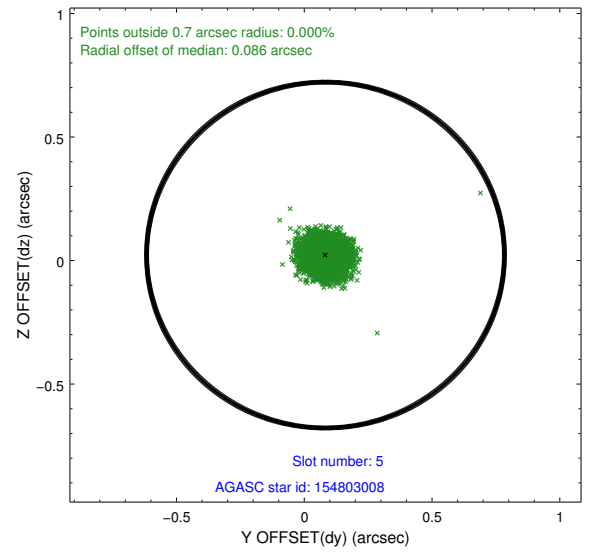
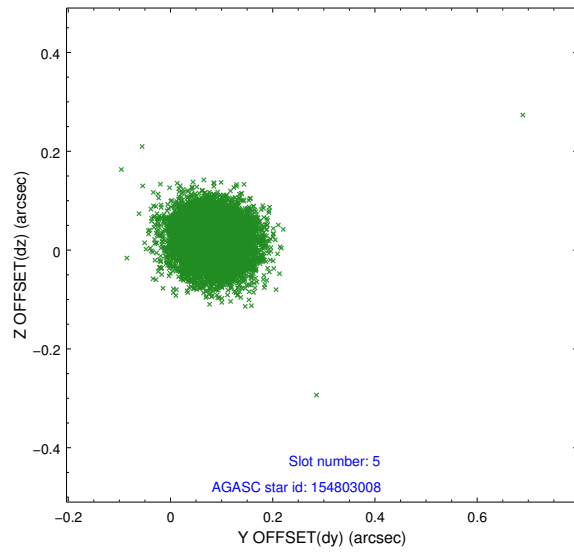
2.4.1 Slot 3



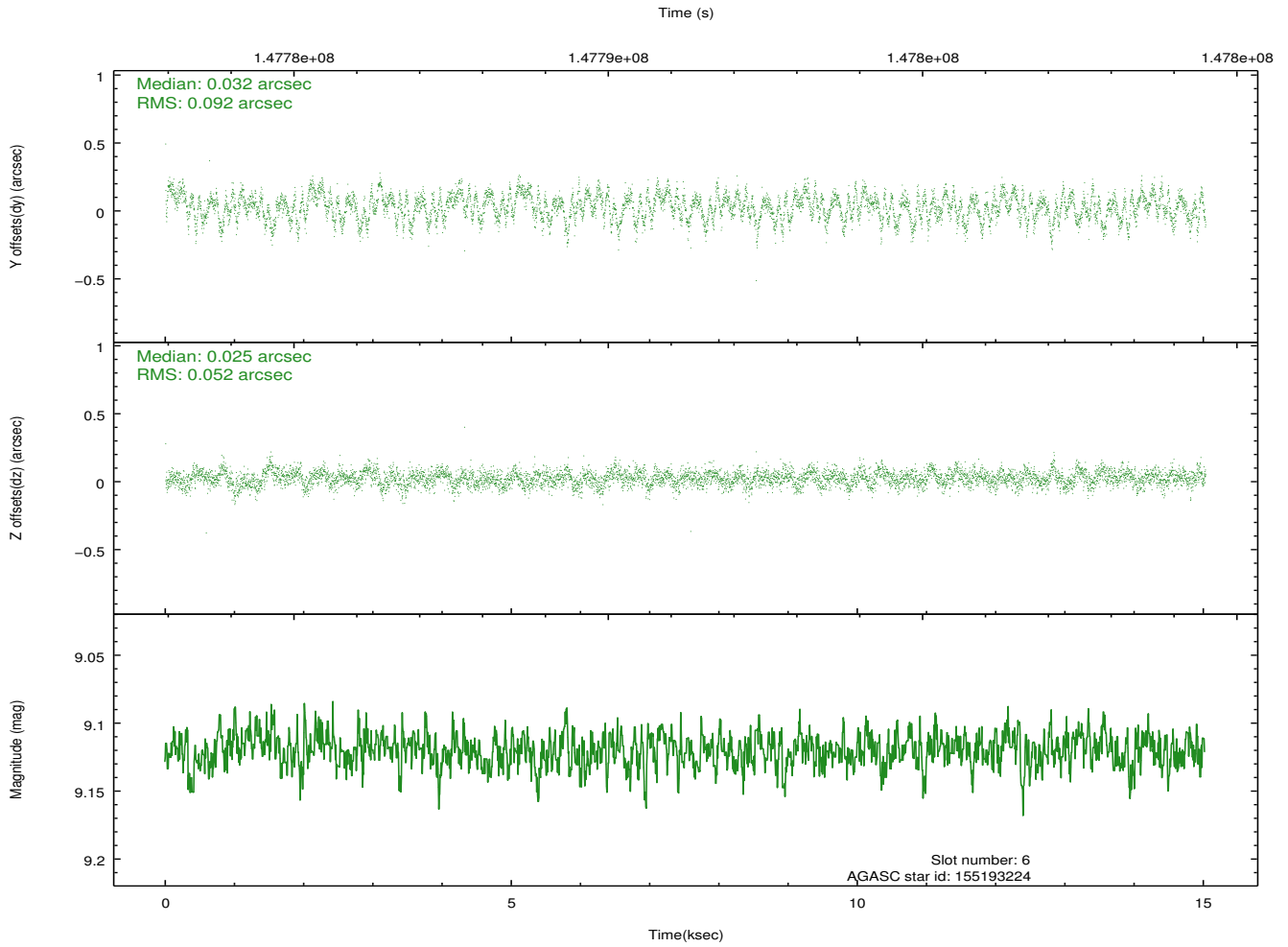
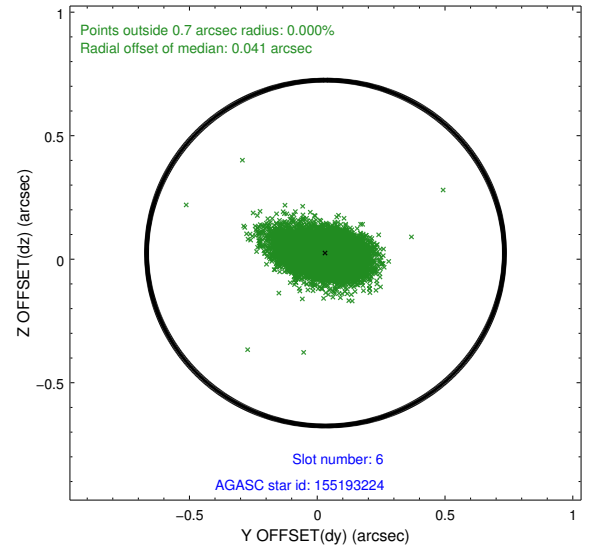
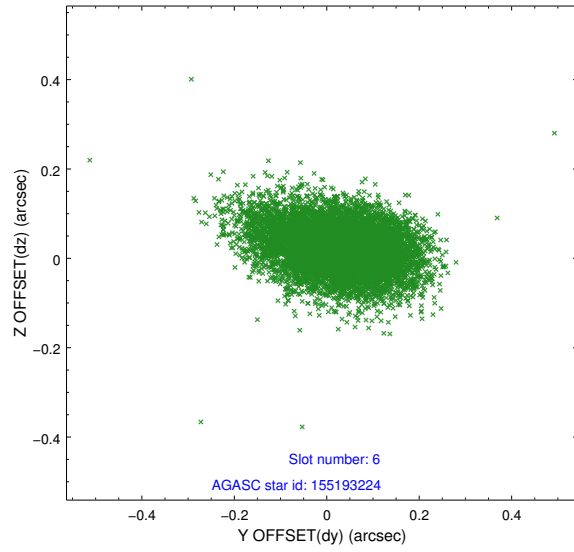
2.4.2 Slot 4



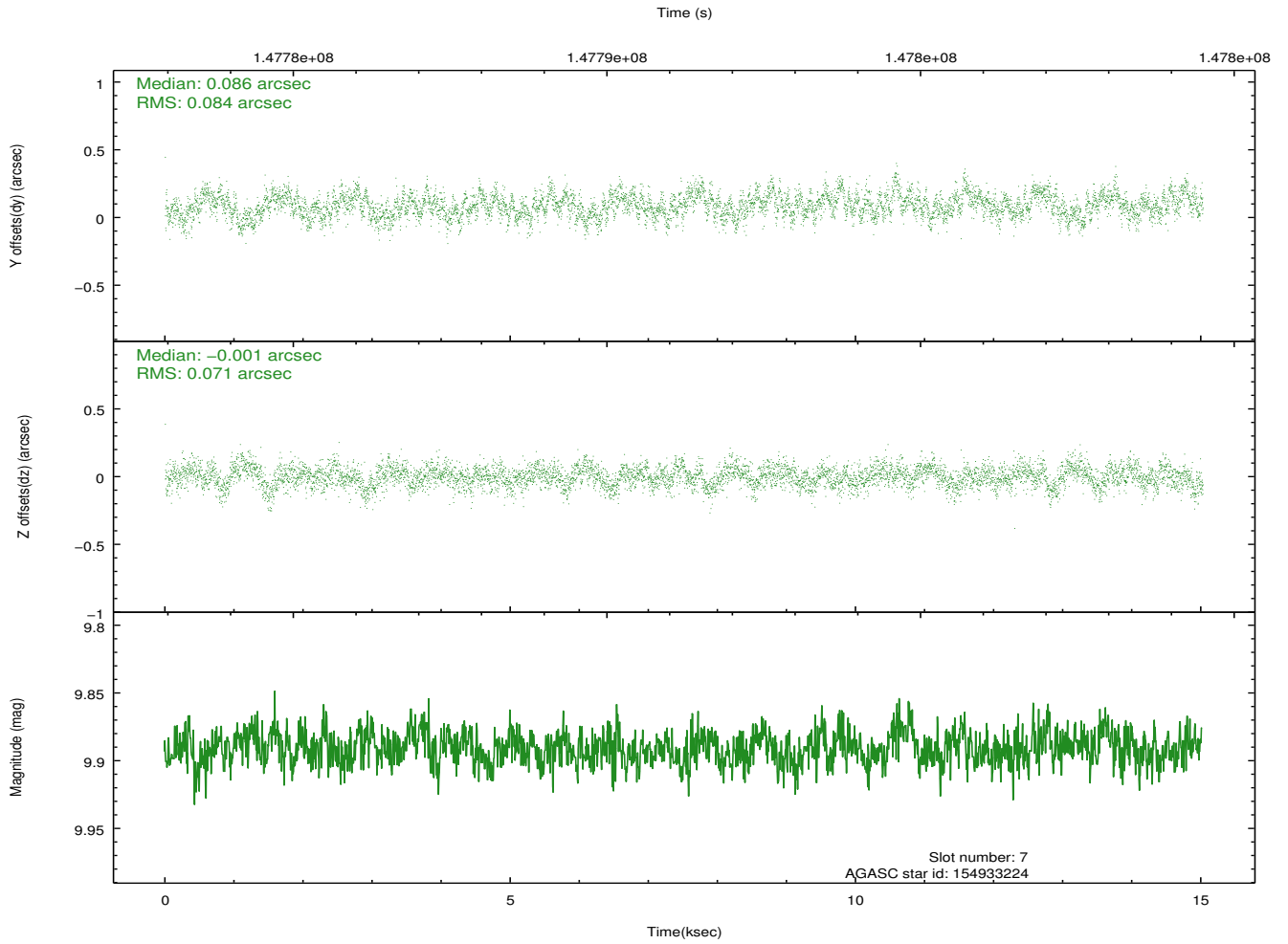
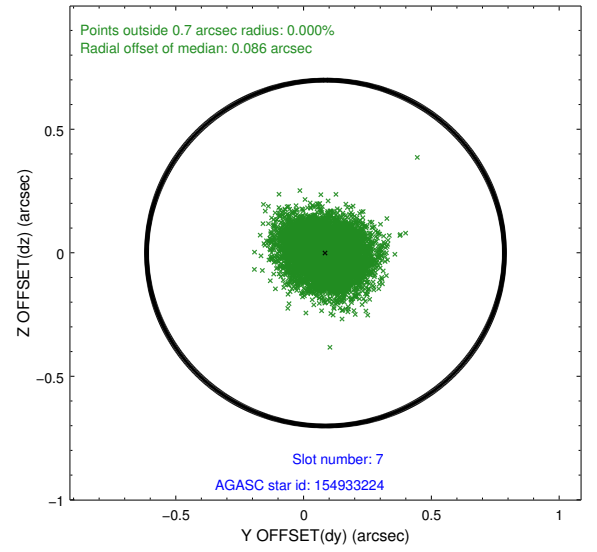
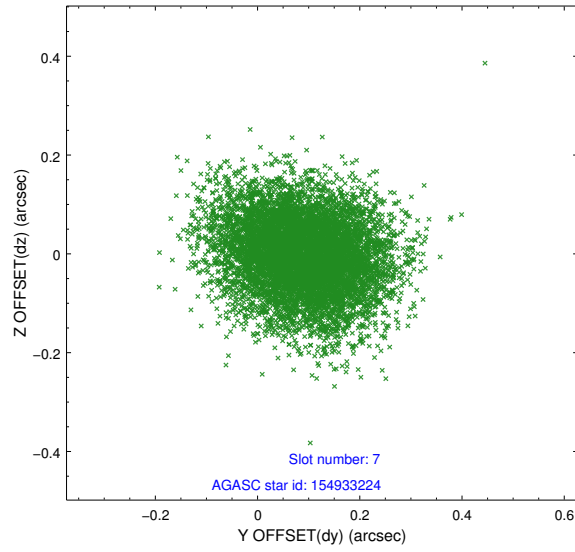
2.4.3 Slot 5



2.4.4 Slot 6

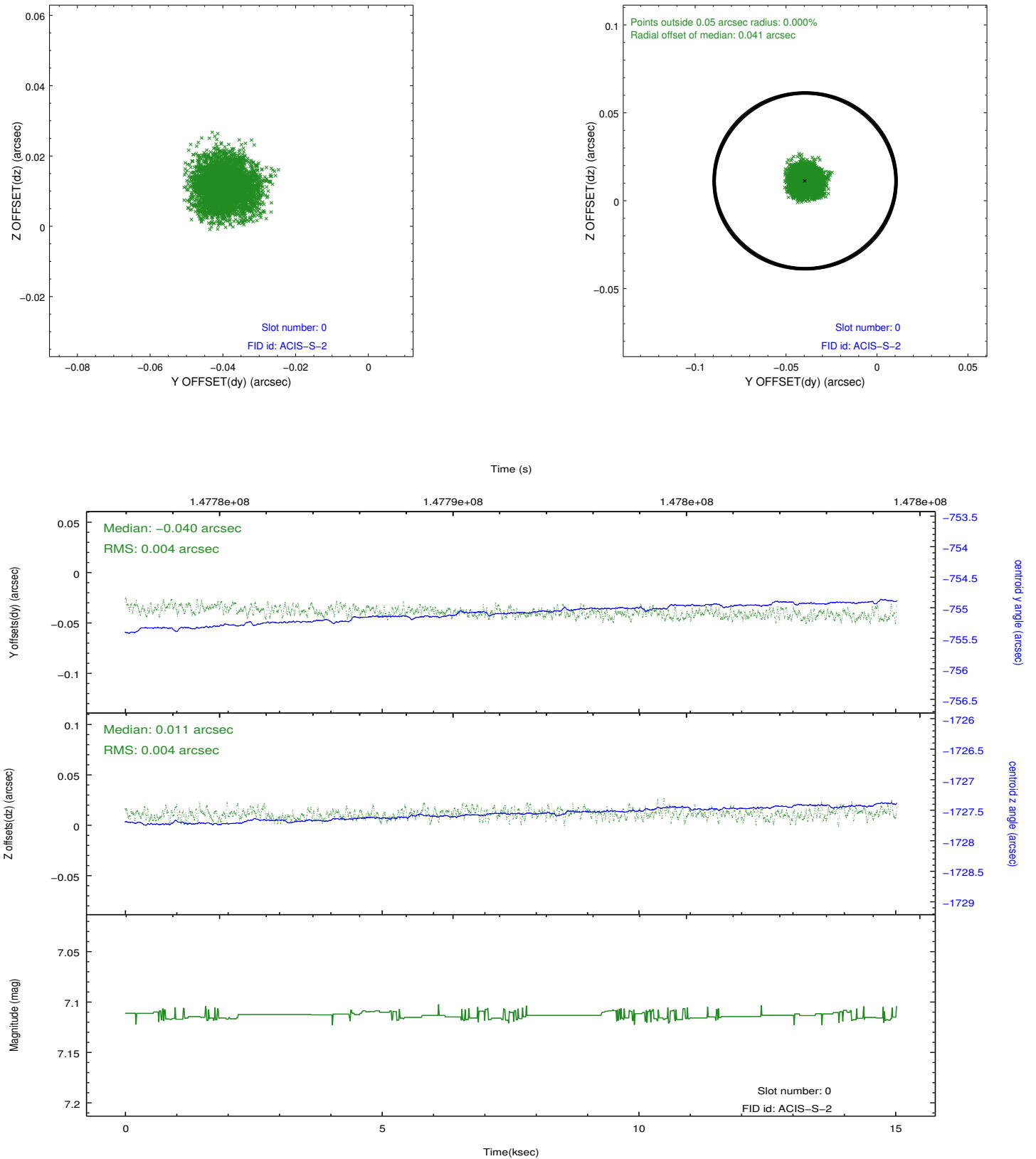


2.4.5 Slot 7

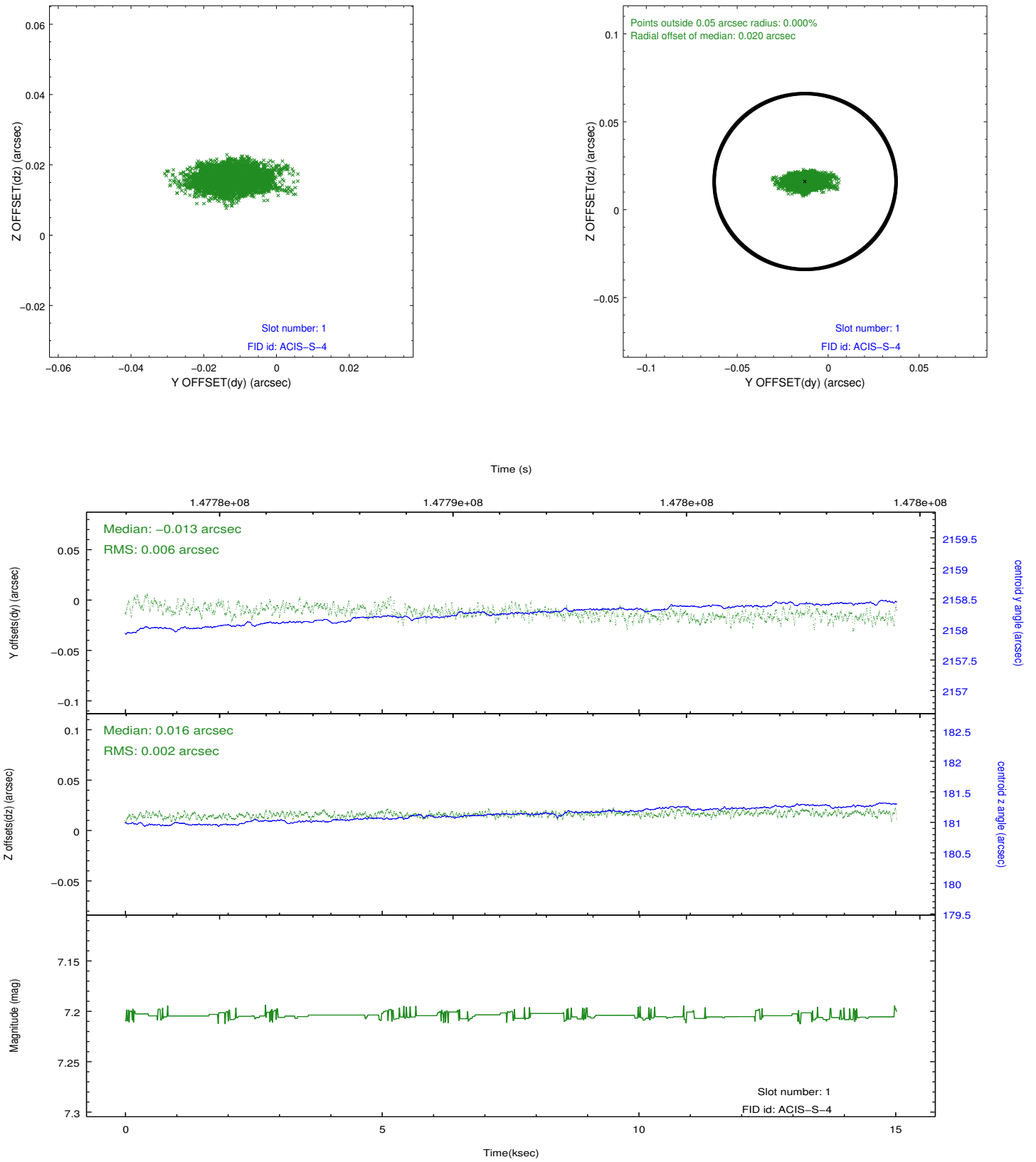


2.5 FID Slots

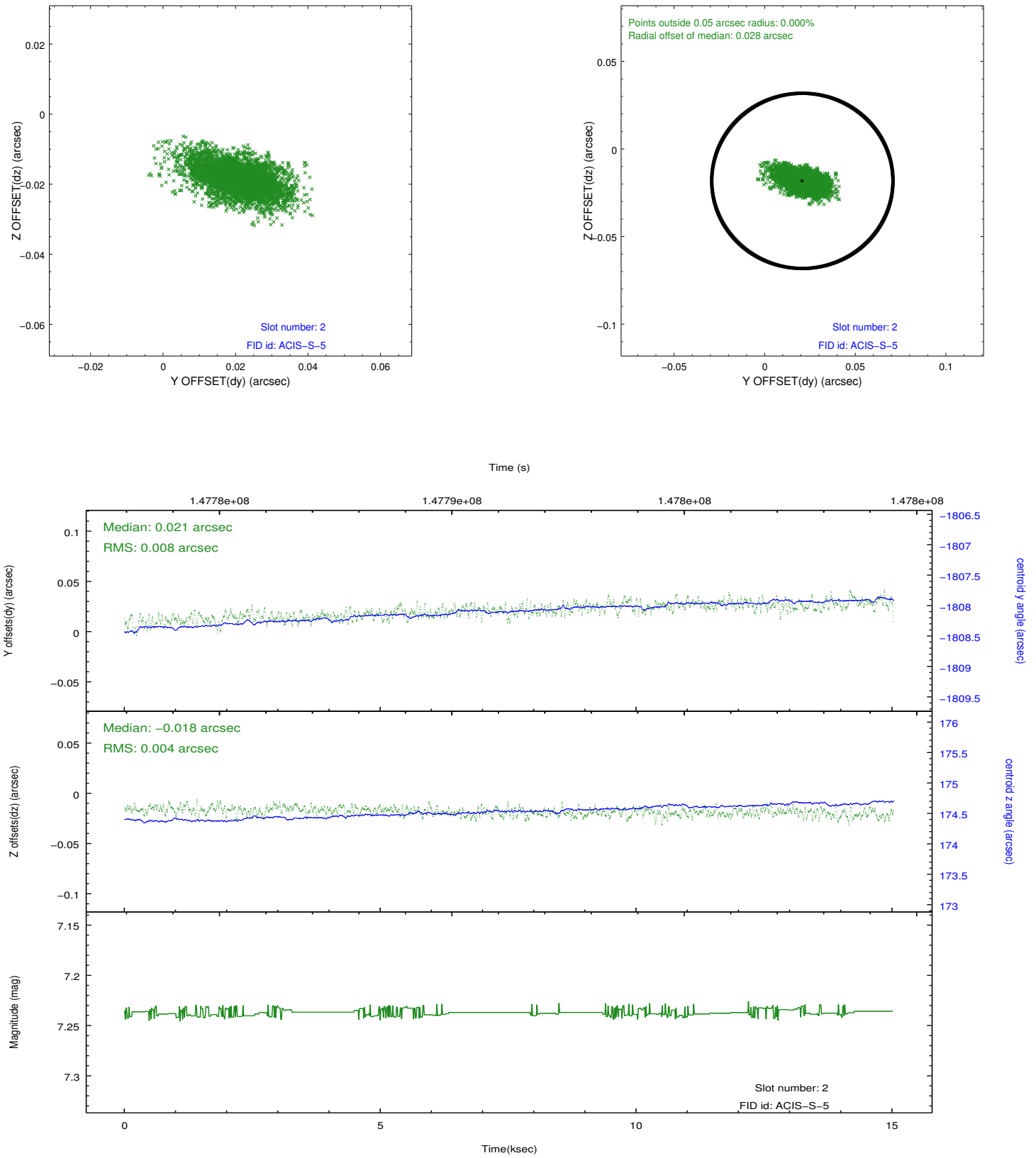
2.5.1 Slot 0



2.5.2 Slot 1



2.5.3 Slot 2



A Summary

A.1 Status

V&V Scientist	Jen Lauer
V&V Date (YYYY-MM-DD)	2012.10.22
V&V Edition	1
V&V Disposition and Status	OK
V&V Charge Time	14.393

A.2 Comments