

# V&V Reference Report

## L2 ASCDS Version : 7.6.10

Observation 2836 - L2 Version 001  
Chandra X-Ray Center

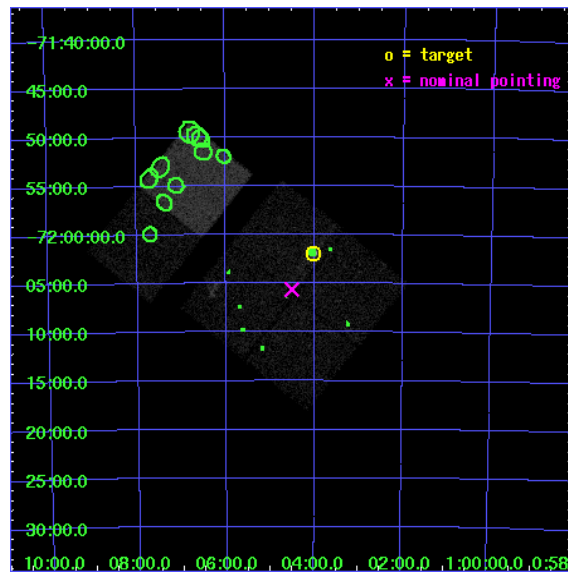
L2 Processing Date : Jan 21 2007

## Contents

<b>1</b>	<b>Front</b>	<b>2</b>
<b>2</b>	<b>OBI</b>	<b>3</b>
2.1	OBI . . . . .	3
2.1.1	Images . . . . .	3
2.1.2	Bias . . . . .	3
2.1.3	Parameters . . . . .	4
2.1.4	Events . . . . .	4
2.2	Compared Parameters . . . . .	5
2.3	Aspect . . . . .	6
2.4	Star Slots . . . . .	9
2.4.1	Slot 3 . . . . .	9
2.4.2	Slot 4 . . . . .	10
2.4.3	Slot 5 . . . . .	11
2.4.4	Slot 6 . . . . .	12
2.4.5	Slot 7 . . . . .	13
2.5	FID Slots . . . . .	14
2.5.1	Slot 0 . . . . .	14
2.5.2	Slot 1 . . . . .	15
2.5.3	Slot 2 . . . . .	16
<b>3</b>	<b>Point Sources</b>	<b>17</b>
<b>A</b>	<b>Summary</b>	<b>18</b>
A.1	Status . . . . .	18
A.2	Comments . . . . .	18

# 1 Front

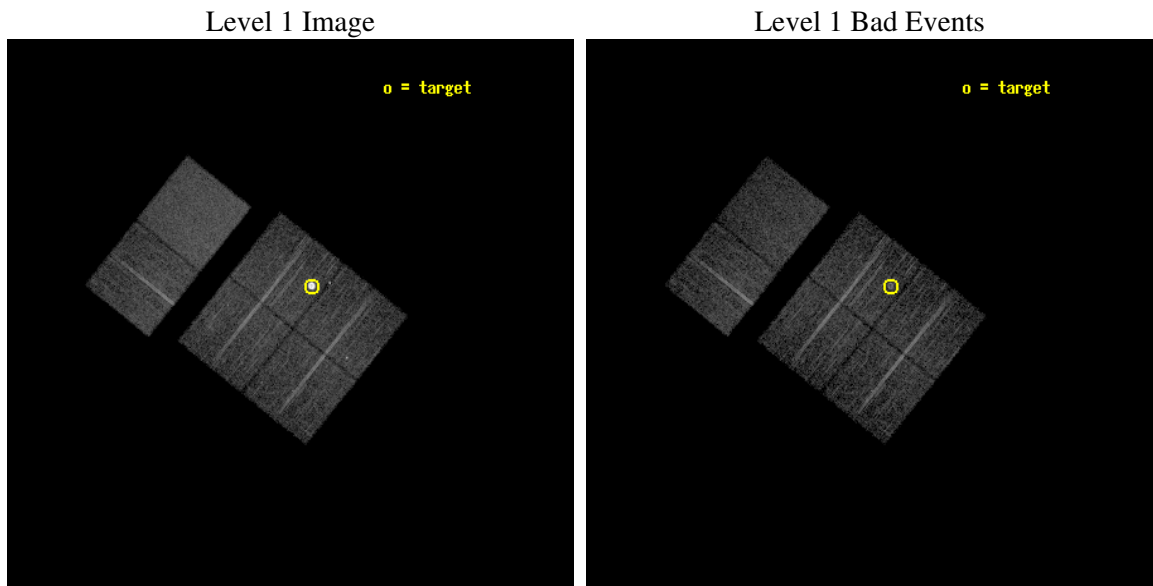
seq_num	590225
obs_id	2836
title	AO3A ACIS-I CALIBRATION OBSERVATIONS OF E0102-72
observer	Dr. CXC Calibration
object	E0102-72.3 [Chip I3, T=120, Offsets=-4,0,0]
dtcycle	0
cycle	P
ra_targ	16.01
dec_targ	-72.032028
ra_nom	16.127655285511
dec_nom	-72.093917366723
roll_nom	308.72804056656
revision	2
ontime	7552.0000070333
livetime	7456.3720356758
ontime0	7552.0000070333
ontime1	7552.0000070333
ontime2	7552.0000070333
ontime3	7552.0000070333
ontime6	7552.0000070333
ontime7	7552.0000070333
l2events	78735



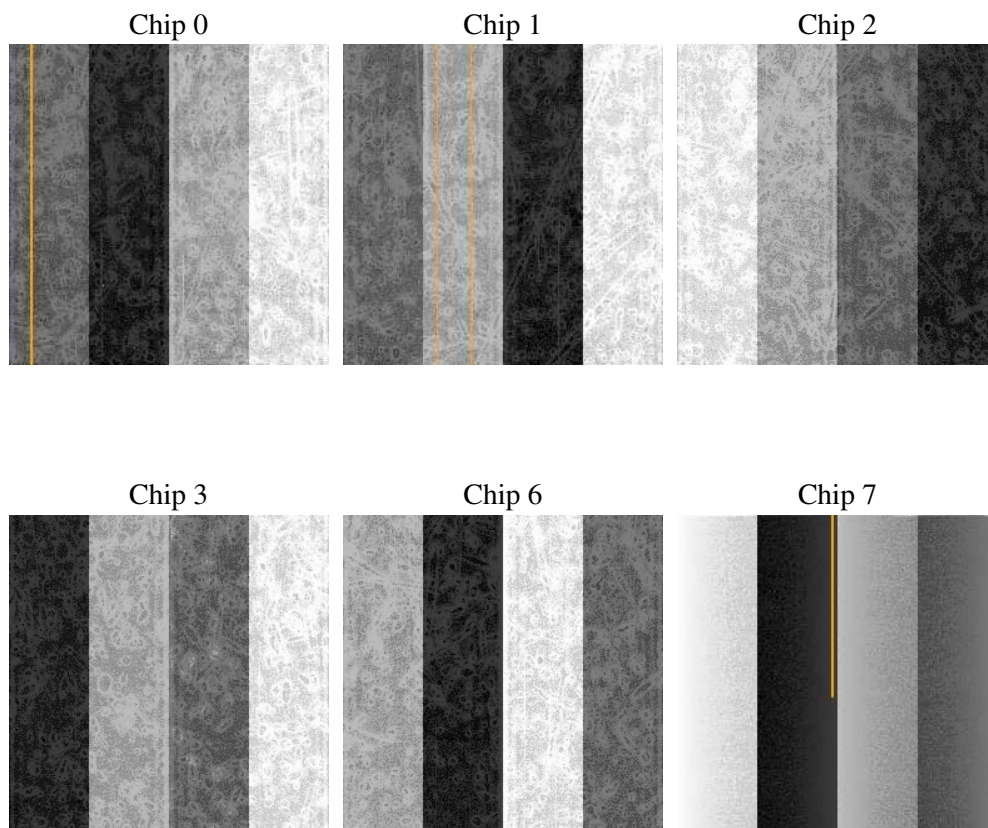
## 2 OBI

### 2.1 OBI

#### 2.1.1 Images



#### 2.1.2 Bias



### 2.1.3 Parameters

obi_num	1
ascdsver	7.6.10
caldbver	3.3.0
date	2007-01-20T13:06:58
revision	2

sched_exp_time	7800.000000
ontime	7552.0000070333
ontime0	7552.0000070333
ontime1	7552.0000070333
ontime2	7552.0000070333
ontime3	7552.0000070333
ontime6	7552.0000070333
ontime7	7552.0000070333
l1events	324753

### 2.1.4 Events

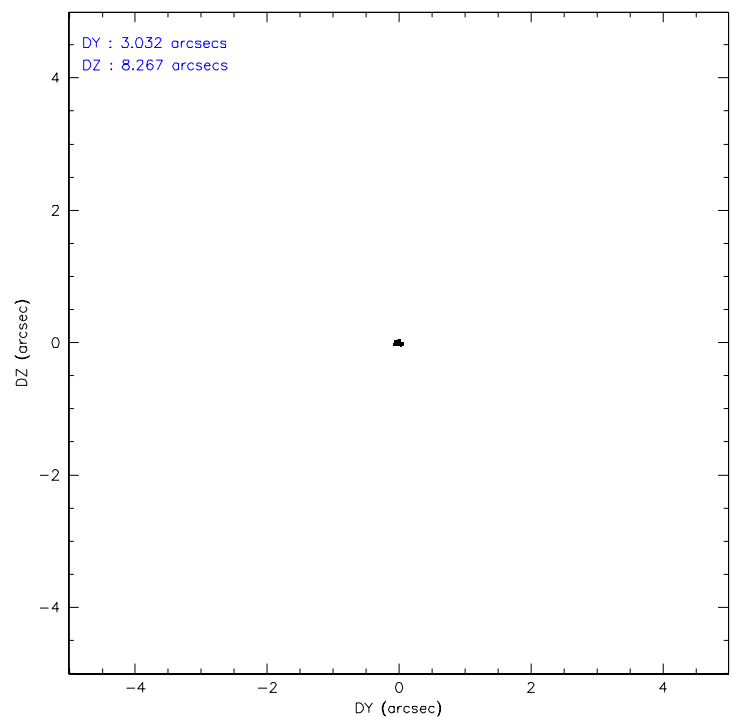
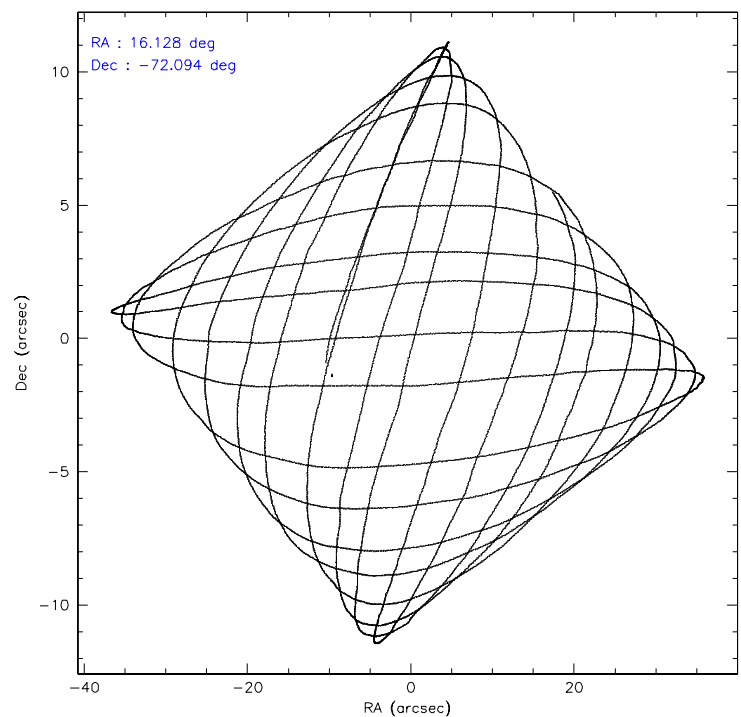
	ccd 0	ccd 1	ccd 2	ccd 3	ccd 6	ccd 7
level 1 events	43373	45460	48021	75129	49635	63135
rejected events	37224	38388	41547	43093	43875	37111
rejected %	85%	84%	86%	57%	88%	58%

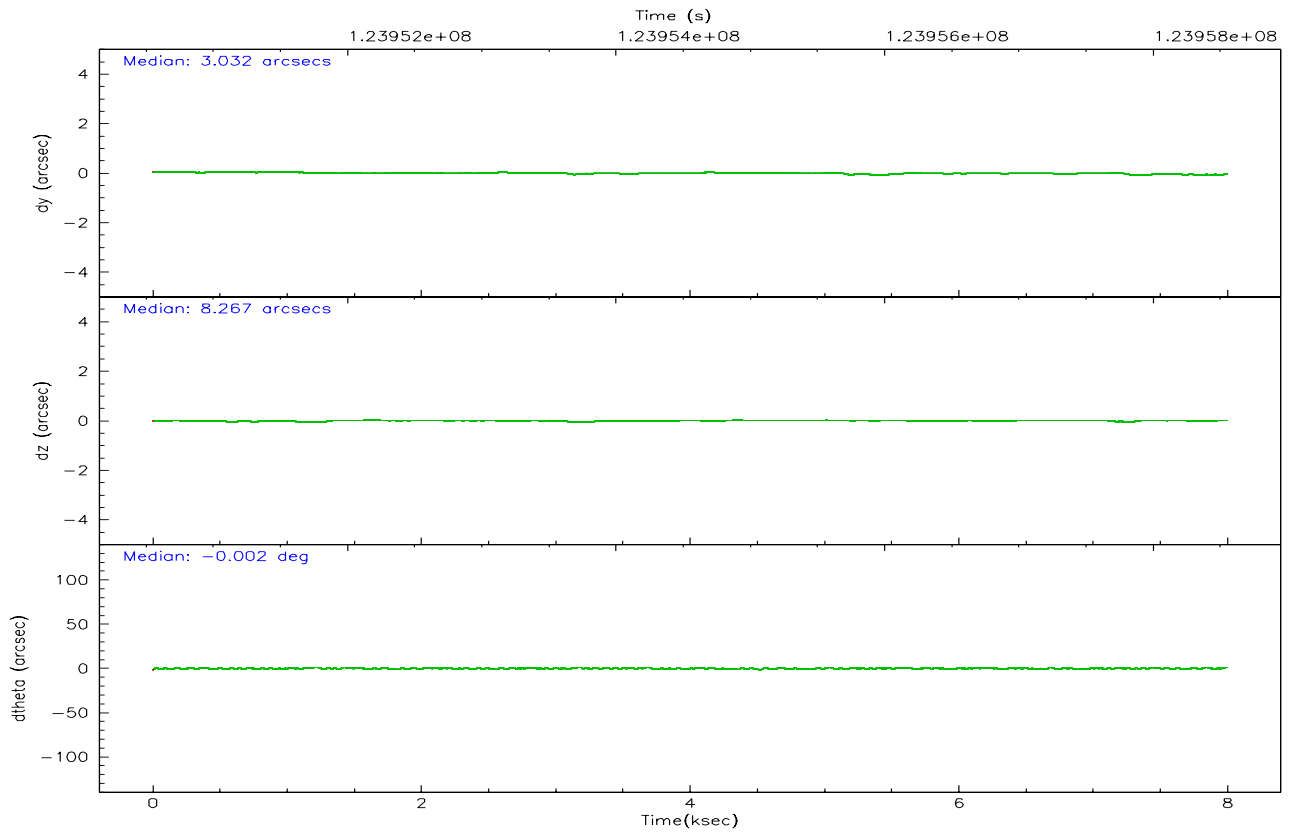
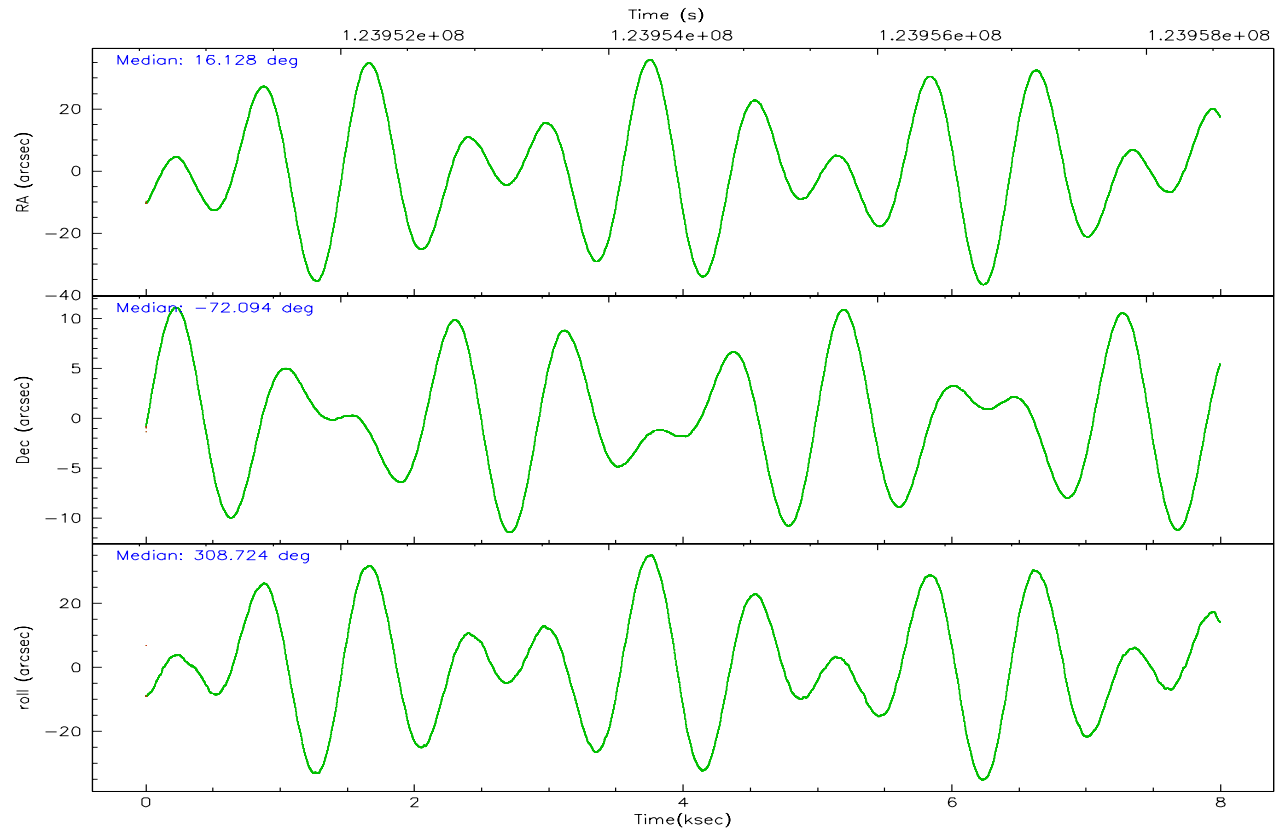
	ccd 0	ccd 1	ccd 2	ccd 3	ccd 6	ccd 7
grade 0 events	2720	3237	3261	25753	2328	2519
	6%	7%	6%	34%	4%	3%
grade 1 events	21	25	25	248	31	66
	0%	0%	0%	0%	0%	0%
grade 2 events	1284	1348	1171	3102	1104	5115
	2%	2%	2%	4%	2%	8%
grade 3 events	592	645	508	1008	562	2340
	1%	1%	1%	1%	1%	3%
grade 4 events	543	660	540	1014	557	2295
	1%	1%	1%	1%	1%	3%
grade 5 events	1753	1848	1564	1972	2208	6013
	4%	4%	3%	2%	4%	9%
grade 6 events	1010	1183	999	1192	1213	13779
	2%	2%	2%	1%	2%	21%
grade 7 events	35450	36514	39953	40840	41632	31008
	81%	80%	83%	54%	83%	49%

## 2.2 Compared Parameters

Parameter	Planned	Actual	Parameter	Planned	Actual
Instrument	ACIS	ACIS	Obspar format version number	6	6
Detector	ACIS-012367	ACIS-012367	Obspar file type	PREDICTED	ACTUAL
Grating	NONE	NONE	Obspar update status	NONE	UPDATED
Data mode	FAINT	FAINT	Number of optional ACIS chips dropped	0	0
Observation mode	POINTING	POINTING	On-chip summing requested	N	N
Pointing RA	16.044461	16.1276552855112	Subarray requested	NONE	NONE
Pointing Dec	-72.084029	-72.09391736672265	Alternating exposures requested	N	N
Pointing Roll	308.440188	308.728040566561	Primary exposure time	0.000000	3.2
Window start time	123552064.184000	123552064.184000			
Window stop time	126144064.184000	126144064.184000			
SIM focus pos (mm)	-0.782348	-0.7809083437167272			
SIM defocus (mm)	0	0.001439871863259334			
SIM translation stage pos (mm)	-233.592463	-233.5874344608287			
SIM translation stage offset (mm)	0	-0.005018542100998502			
Observation start time	123950749.184000	123950373.14547			
Observation start date	2001-12-05T14:44:45	2001-12-05T14:39:33			
Observation end time	123958549.184000	123958682.8208			
Observation end date	2001-12-05T16:54:45	2001-12-05T16:58:02			
Read mode	TIMED	TIMED			

## 2.3 Aspect





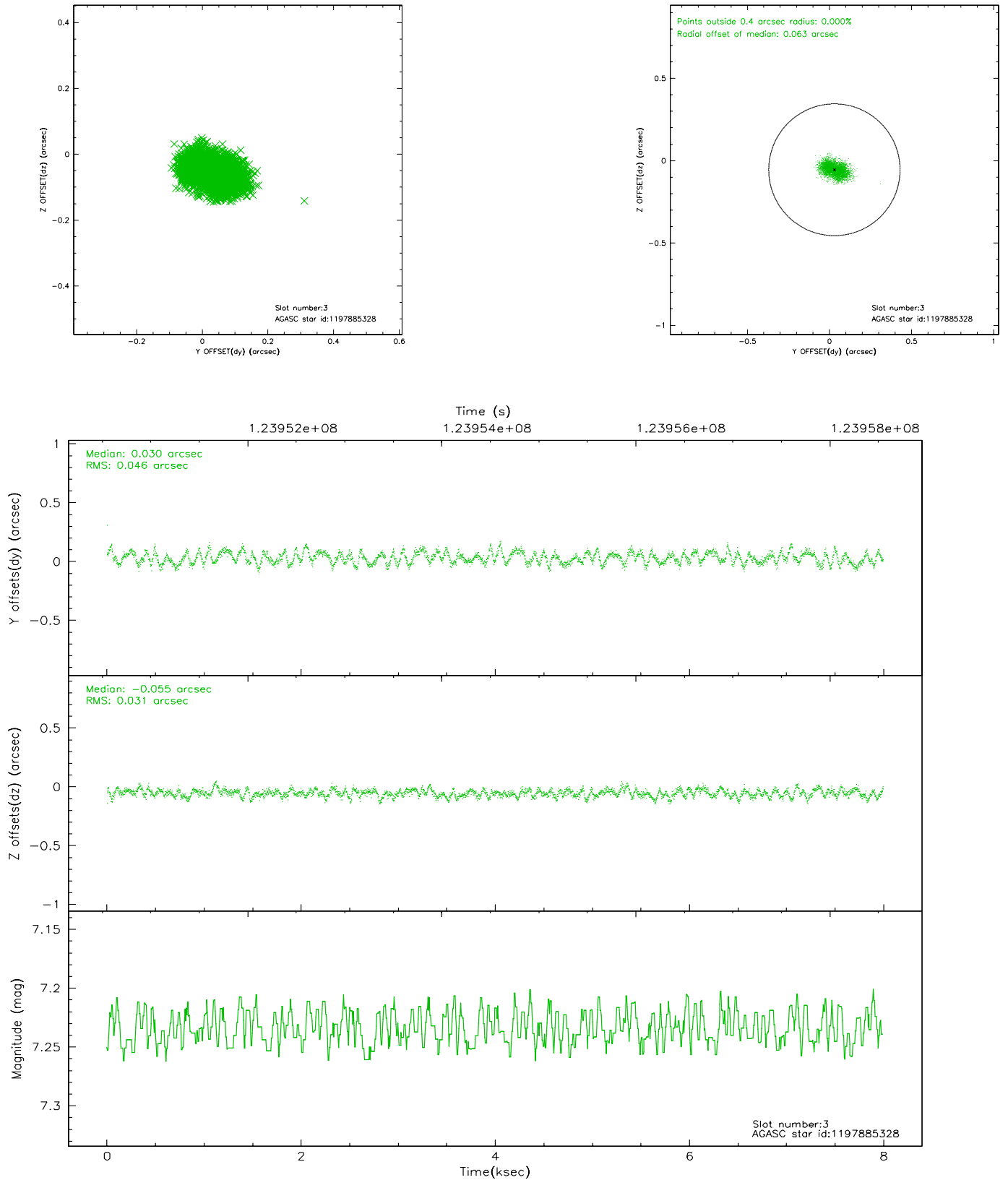
### Slot Statistics

slot	status	id	mag	n_pts	med_dy	med_dz	dr1	dr2	ra	dec	mean_y	mean_z
0	FID	ACIS-I-1	7.25	1951	-0.042	0.088	0.006	0.010	0.000000	0.000000	936.71	-831.61
1	FID	ACIS-I-5	7.23	1951	-0.020	0.030	0.006	0.010	0.000000	0.000000	-1810.97	1065.49
2	FID	ACIS-I-6	7.26	1951	-0.029	-0.048	0.006	0.011	0.000000	0.000000	401.53	1710.70
3	GUIDE	1197885328	7.23	3900	0.030	-0.055	0.060	0.093	16.283090	-71.733943	-819.64	994.25
4	GUIDE	1198189696	7.36	3900	-0.052	0.036	0.039	0.062	15.223750	-72.697522	1187.95	-2064.63
5	GUIDE	1197750936	7.56	3900	0.015	-0.075	0.042	0.067	15.387940	-71.549550	-1968.88	607.10
6	GUIDE	1198283128	8.01	3901	-0.106	0.085	0.048	0.080	17.272580	-72.642428	2404.16	-224.59
7	GUIDE	1197878768	9.63	3887	0.111	0.008	0.119	0.186	16.656786	-71.304581	-1755.63	2295.74

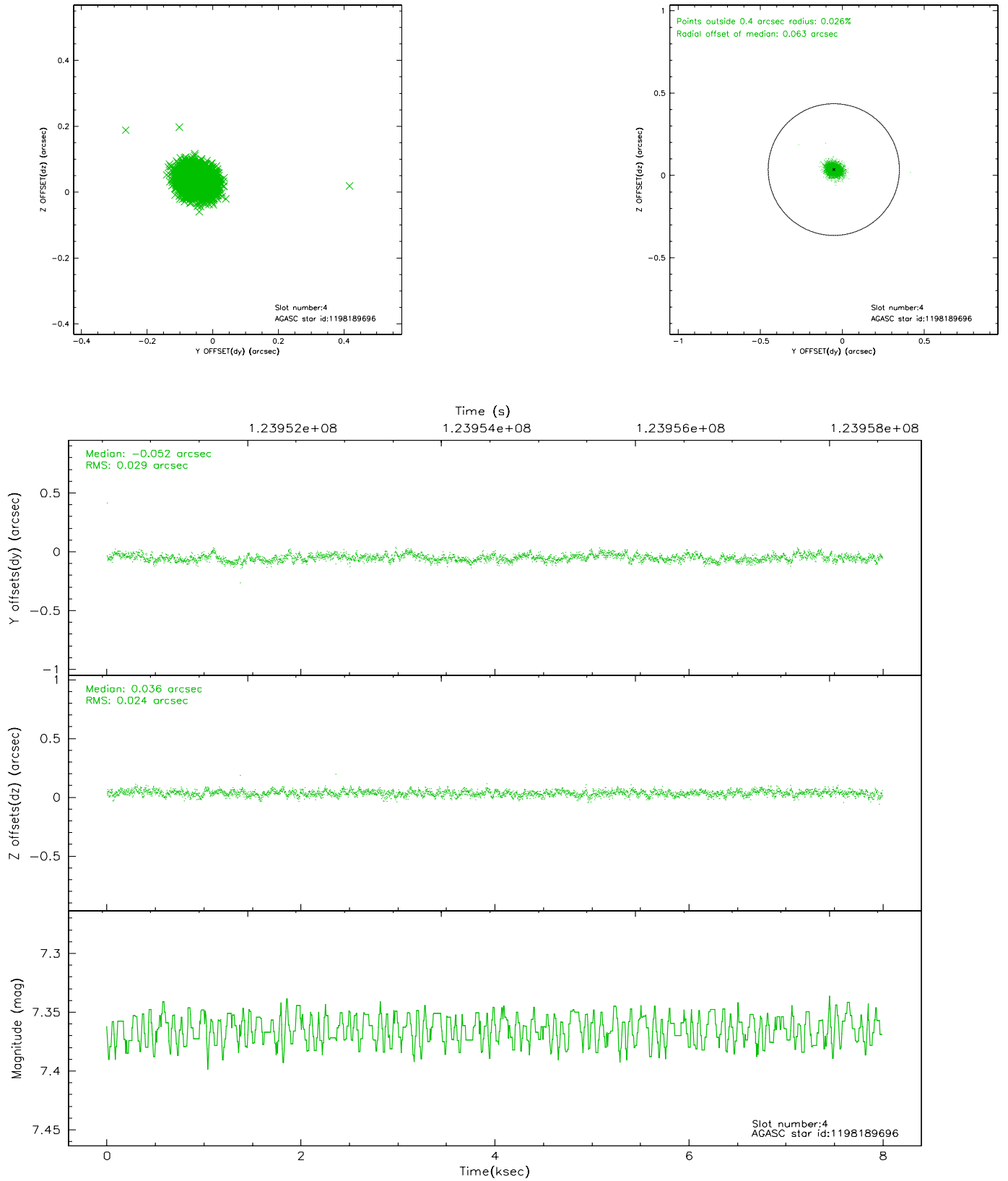


## 2.4 Star Slots

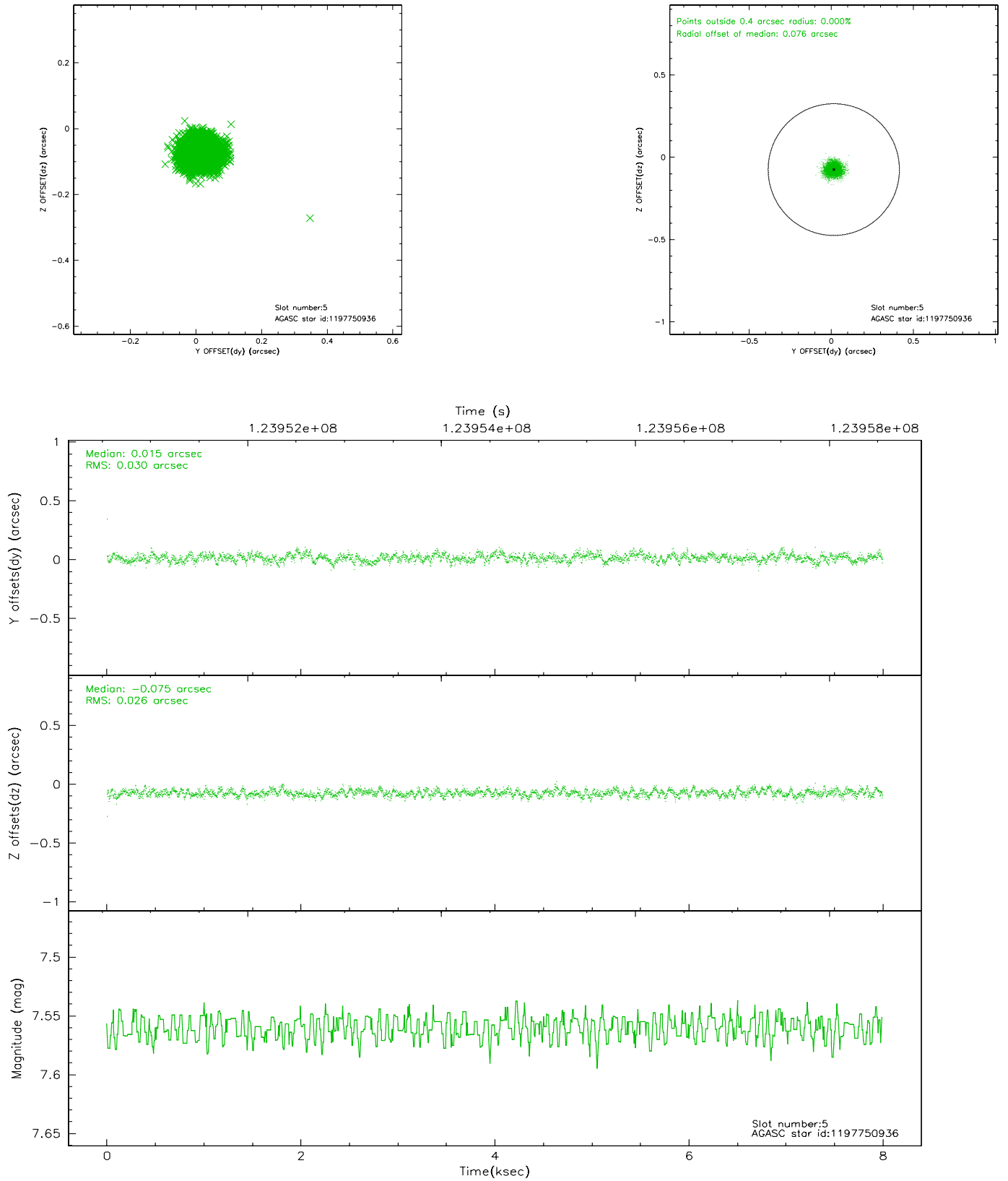
### 2.4.1 Slot 3



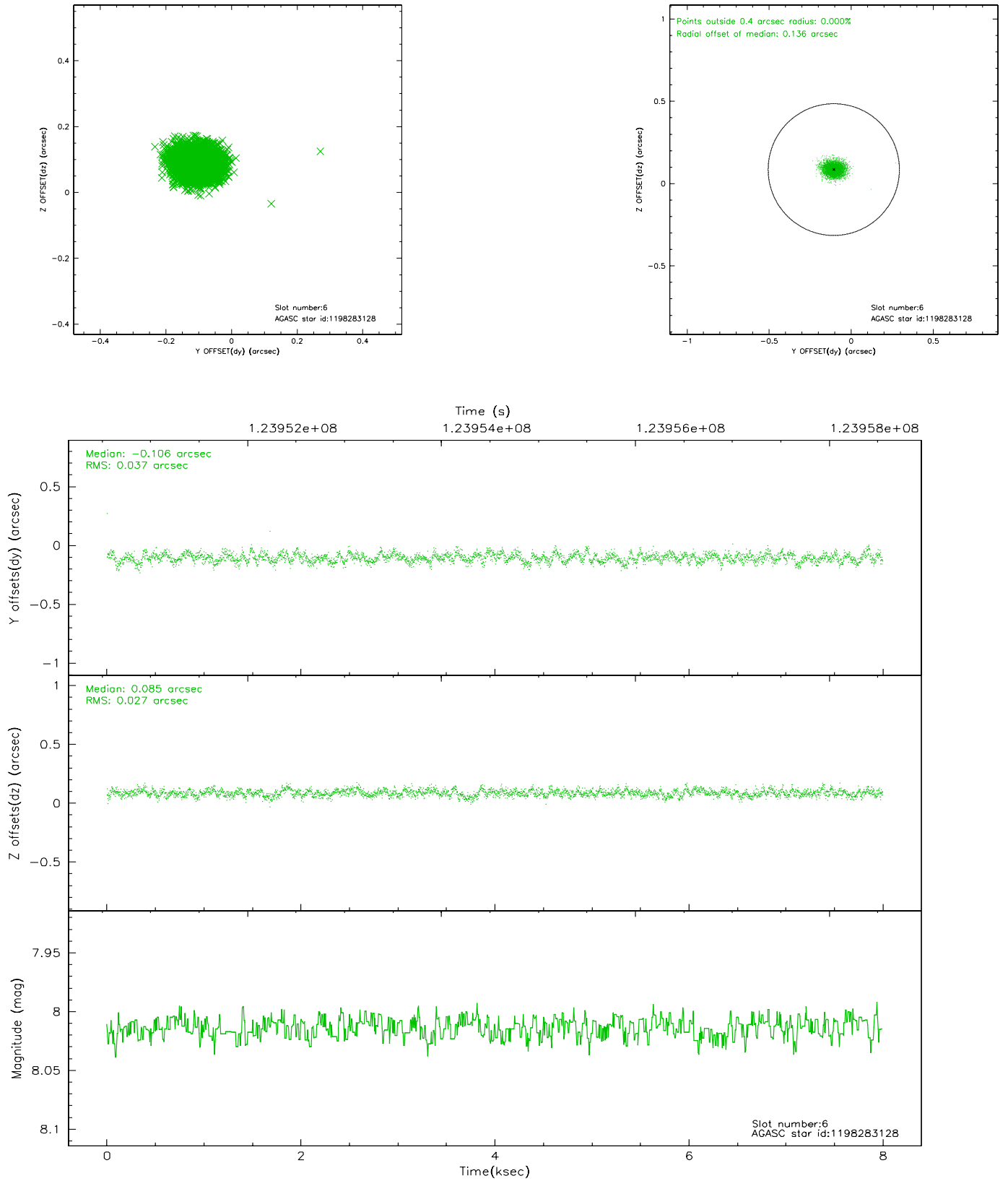
## 2.4.2 Slot 4



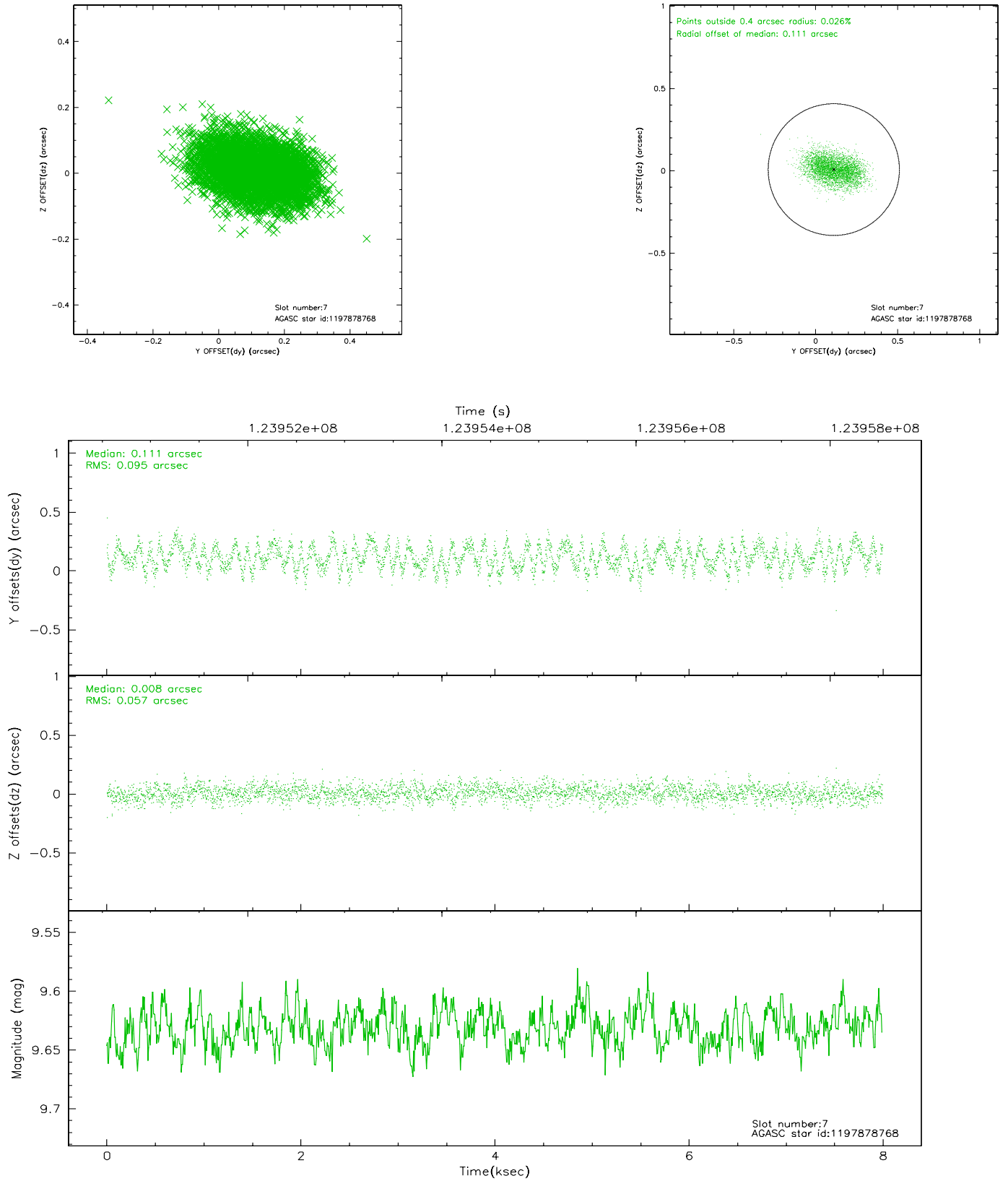
### 2.4.3 Slot 5



## 2.4.4 Slot 6

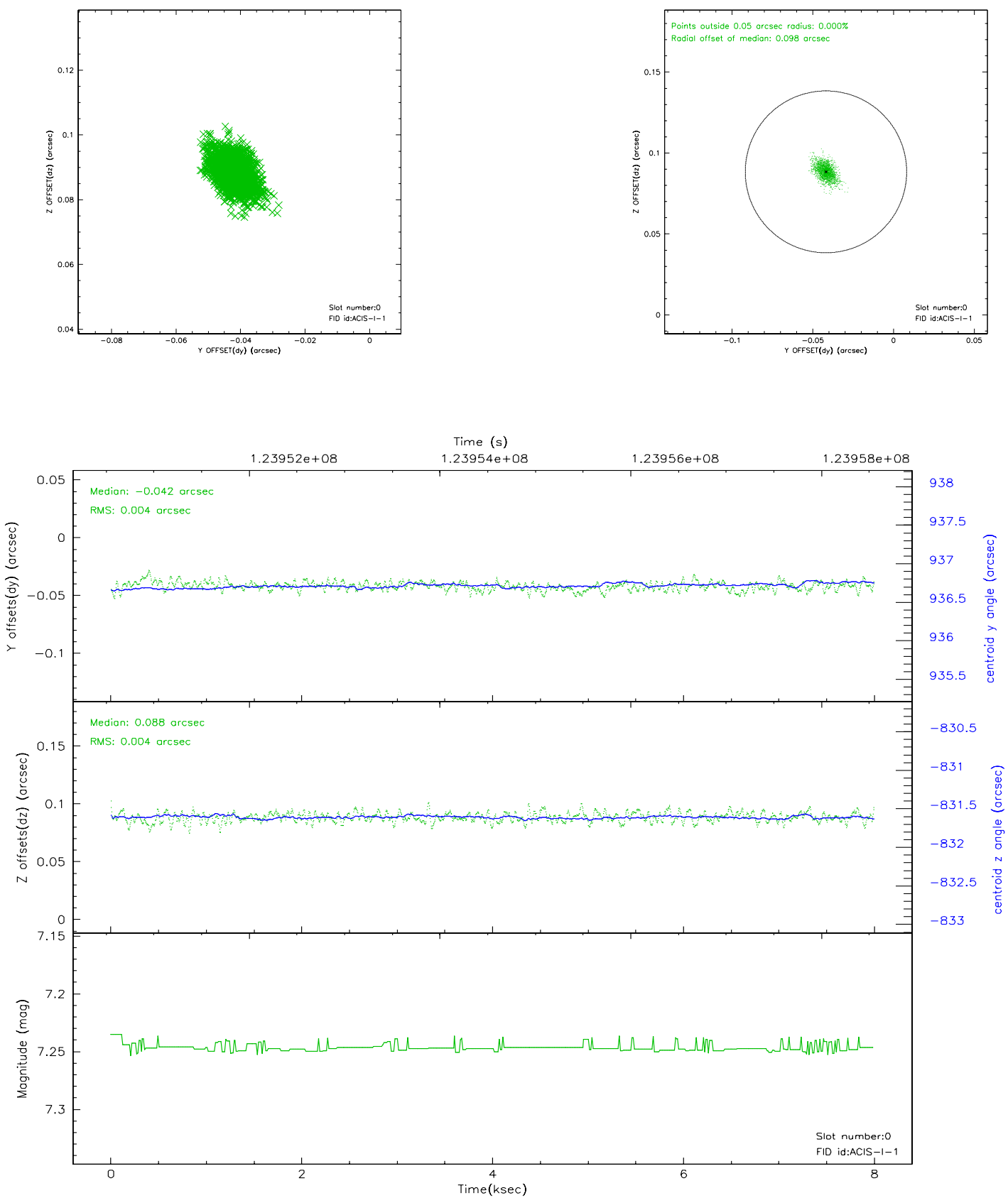


## 2.4.5 Slot 7

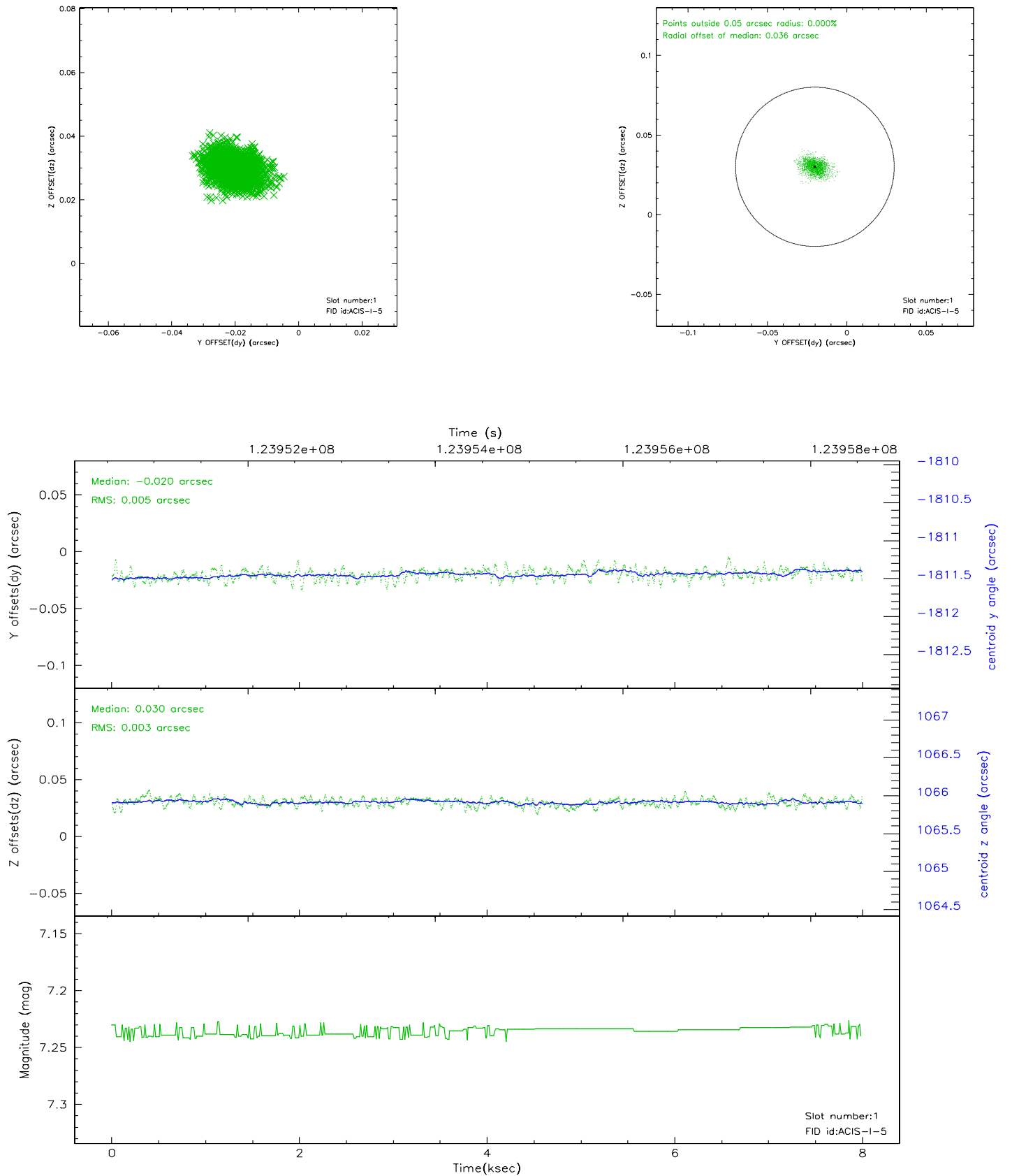


## 2.5 FID Slots

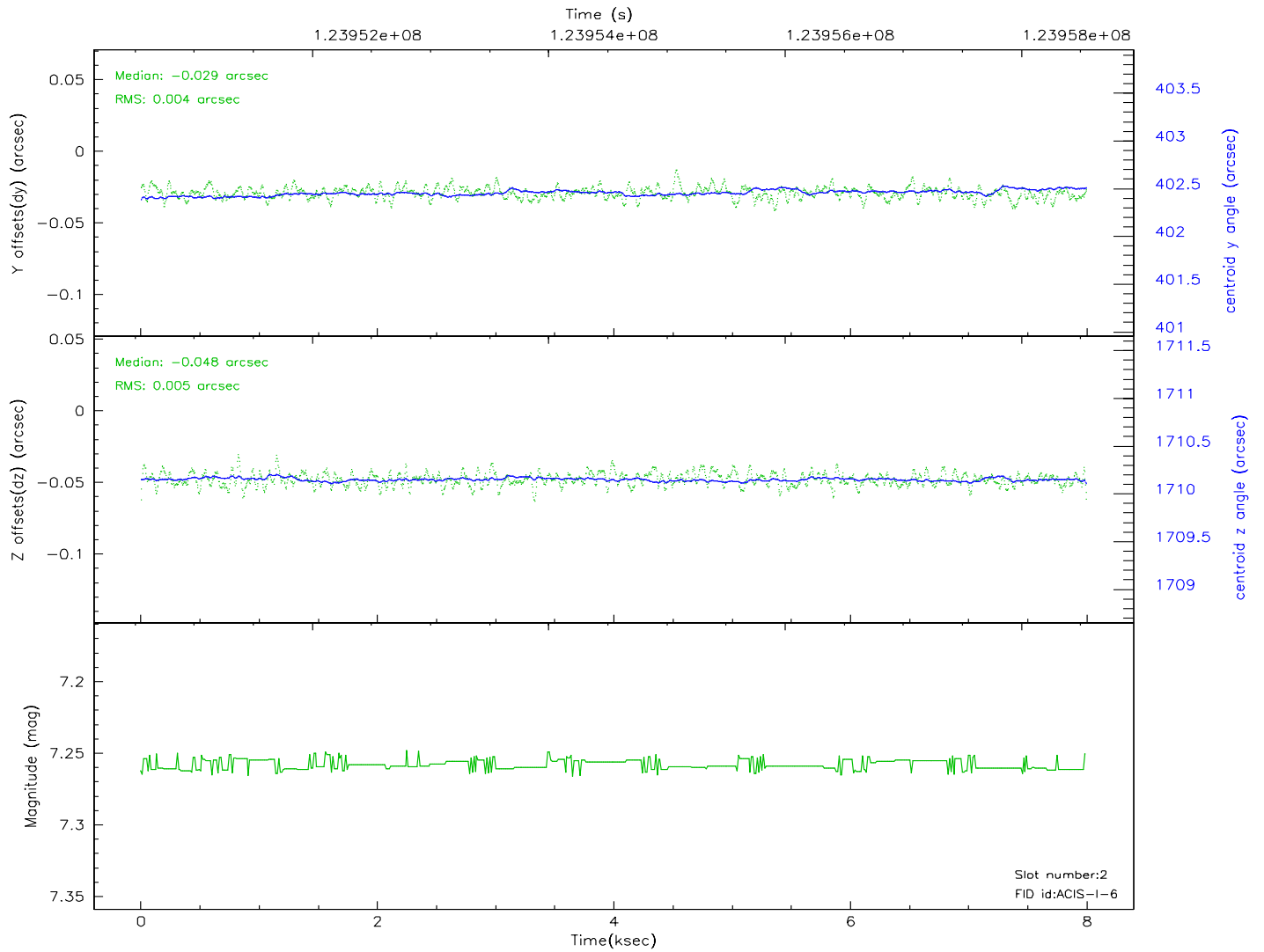
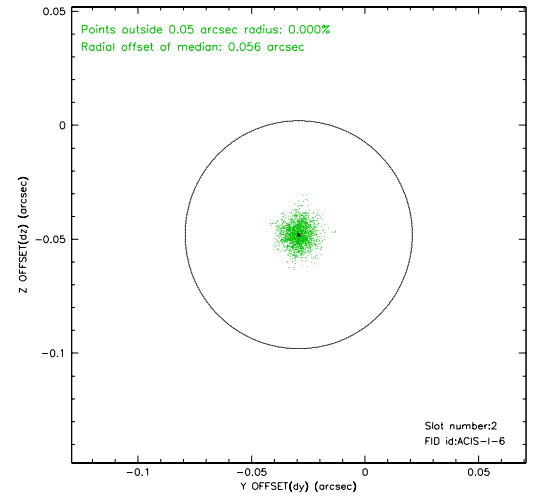
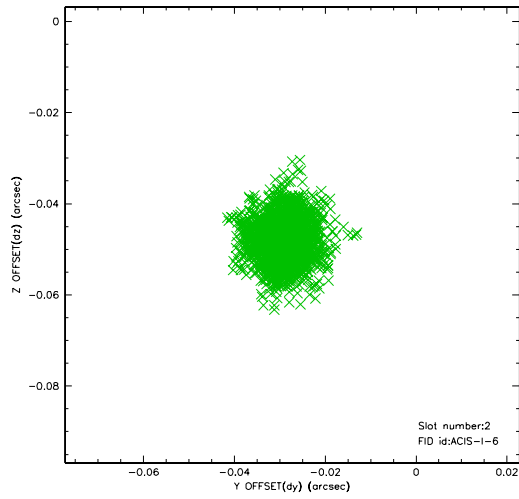
### 2.5.1 Slot 0



## 2.5.2 Slot 1

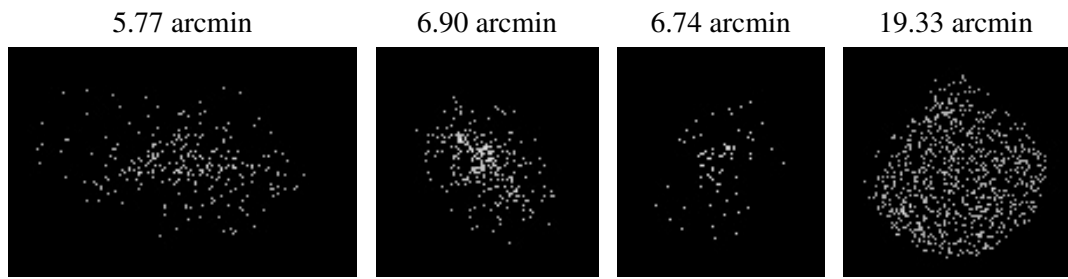


### 2.5.3 Slot 2





### 3 Point Sources



## A Summary

### A.1 Status

V&V Scientist	Beth Sundheim
V&V Date (YYYY-MM-DD)	2007.01.21
V&V Edition	1
V&V Disposition and Status	OK
V&V Charge Time	7.555

### A.2 Comments