

# V&V Reference Report

## L2 ASCDS Version : 8.4.5

Observation 2826 - L2 Version 3  
Chandra X-Ray Center

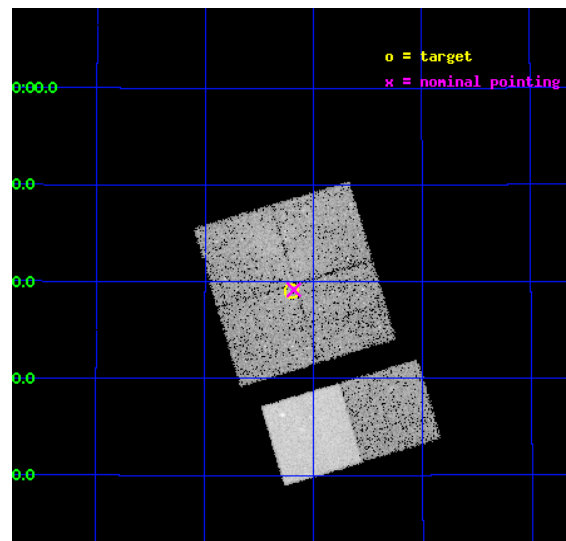
L2 Processing Date : Oct 11 2012

## Contents

<b>1</b>	<b>Front</b>	<b>2</b>
<b>2</b>	<b>OBI</b>	<b>3</b>
2.1	OBI . . . . .	3
2.1.1	Images . . . . .	3
2.1.2	Bias . . . . .	3
2.1.3	Parameters . . . . .	4
2.1.4	Events . . . . .	4
2.2	Compared Parameters . . . . .	5
2.3	Aspect . . . . .	6
2.4	Star Slots . . . . .	9
2.4.1	Slot 3 . . . . .	9
2.4.2	Slot 4 . . . . .	10
2.4.3	Slot 5 . . . . .	11
2.4.4	Slot 6 . . . . .	12
2.4.5	Slot 7 . . . . .	13
2.5	FID Slots . . . . .	14
2.5.1	Slot 0 . . . . .	14
2.5.2	Slot 1 . . . . .	15
2.5.3	Slot 2 . . . . .	16
<b>A</b>	<b>Summary</b>	<b>17</b>
A.1	Status . . . . .	17
A.2	Comments . . . . .	17

# 1 Front

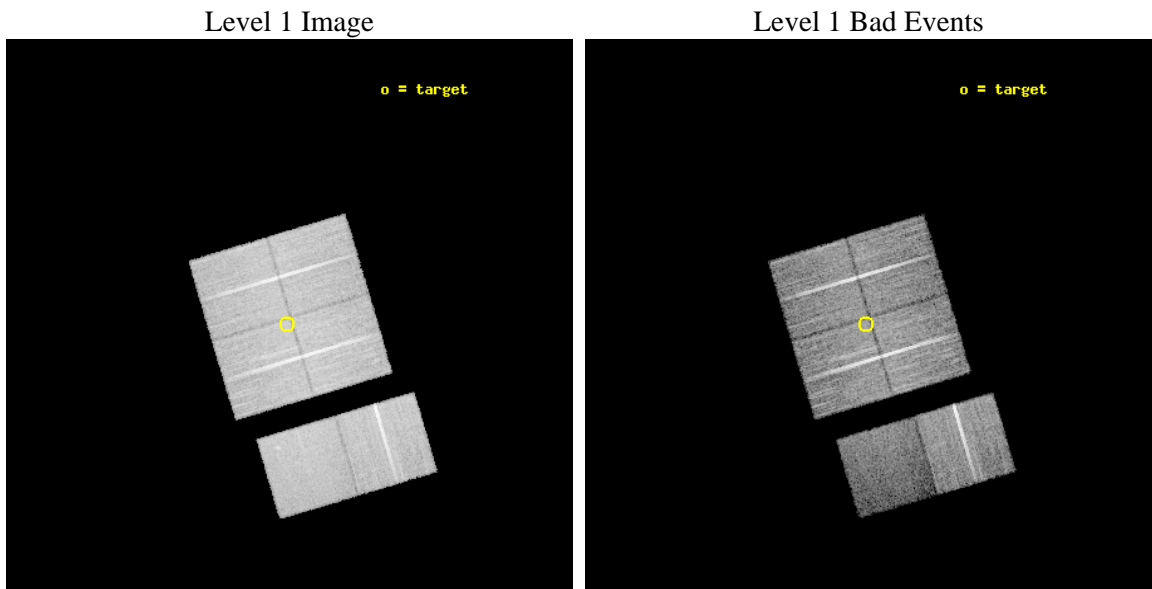
seq_num	500276	Sequence number
obs_id	2826	Observation id
title	FINE FLUOROSCOPY ON MOLECULAR CLUMPS OVERTAKEN BY SUPERNOVA BLAST WAVE	Proposal title
observer	Dr Yasunobu Uchiyama	Principal investigator
object	G78.2+2.1 CLUMP-2	Source name
dtcycle	0	&#160
cycle	P	events from which exps? Prim/Second/Both
ra_targ	305.05	Observer's specified target RA [deg]
dec_targ	40.65	Observer's specified target Dec [deg]
ra_nom	305.04530079155	Nominal RA [deg]
dec_nom	40.652977704574	Nominal Dec [deg]
roll_nom	163.36132159451	Nominal Roll [deg]
revision	3	Processing version of data
ontime	19963.777425975	Sum of GTIs [s]
livetime	19710.984055463	Livetime [s]
ontime0	19963.654305995	Sum of GTIs [s]
ontime1	19963.695345968	Sum of GTIs [s]
ontime2	19960.495415717	Sum of GTIs [s]
ontime3	19963.777425975	Sum of GTIs [s]
ontime6	19963.859505981	Sum of GTIs [s]
ontime7	19963.818465978	Sum of GTIs [s]
l2events	102746	Number of level 2 events



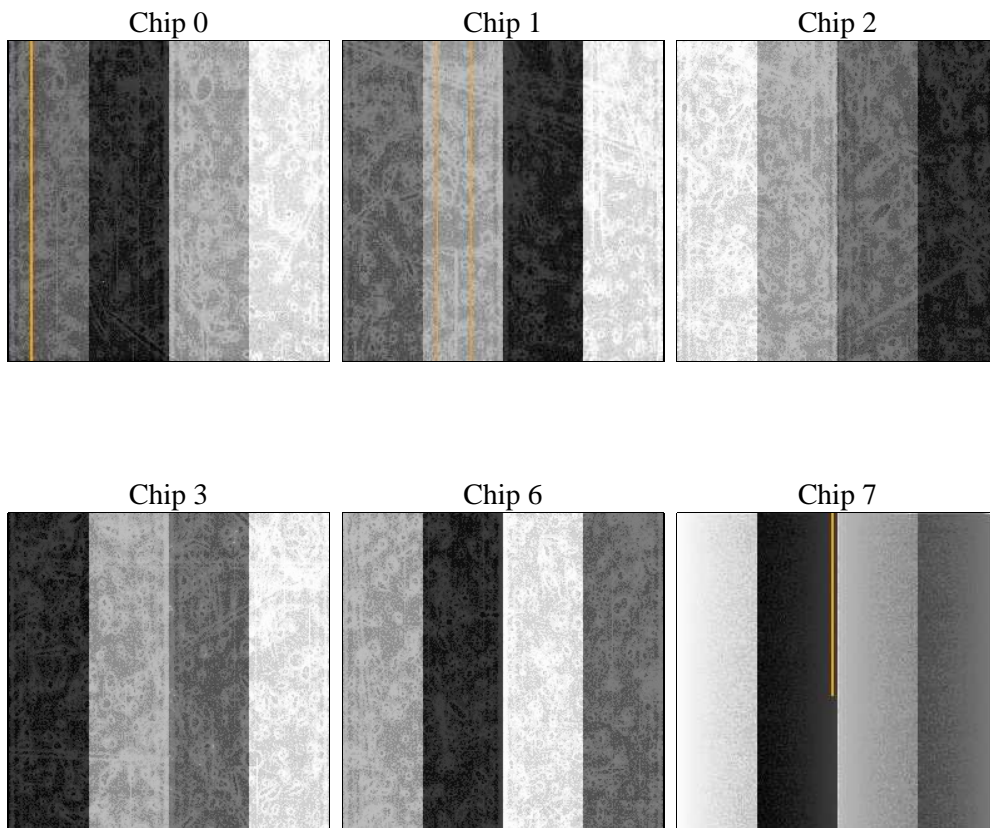
## 2 OBI

### 2.1 OBI

#### 2.1.1 Images



#### 2.1.2 Bias



### 2.1.3 Parameters

obi_num	0	Obi number	sched_exp_time	20000.000000	[s] Scheduled observation exposure time
ascdsver	8.4.5	Processing system revision	ontime	19963.777425975	Sum of GTIs [s]
caldsver	4.5.2	&#160	ontime0	19963.654305995	Sum of GTIs [s]
date	2012-10-11T12:53:58	Date and time of file creation	ontime1	19963.695345968	Sum of GTIs [s]
revision	3	Processing version of data	ontime2	19960.495415717	Sum of GTIs [s]
			ontime3	19963.777425975	Sum of GTIs [s]
			ontime6	19963.859505981	Sum of GTIs [s]
			ontime7	19963.818465978	Sum of GTIs [s]
			l1events	620472	Number of level 1 events

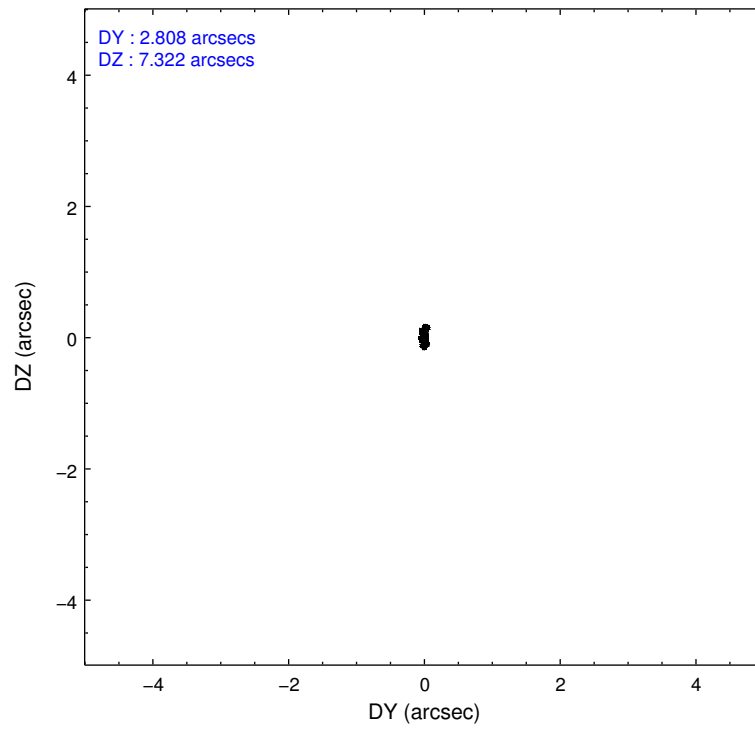
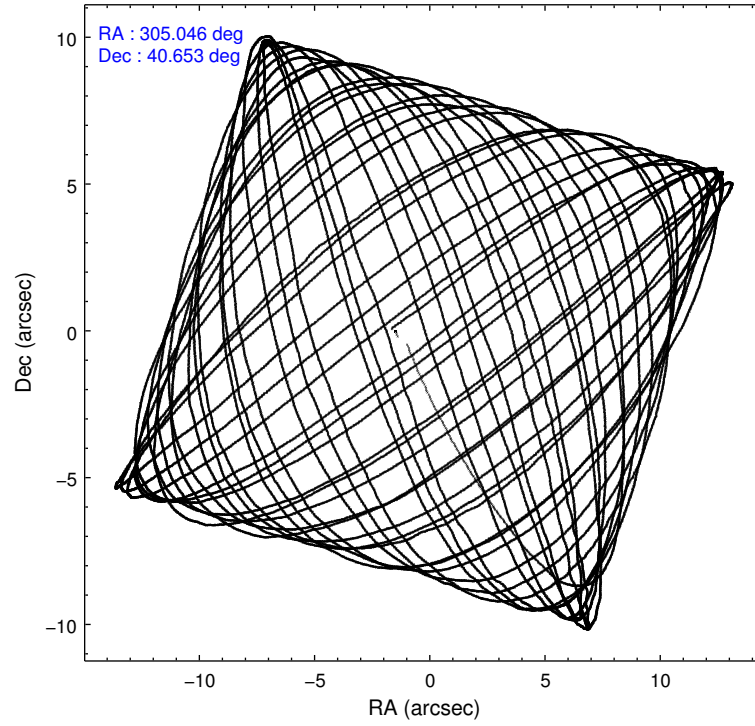
### 2.1.4 Events

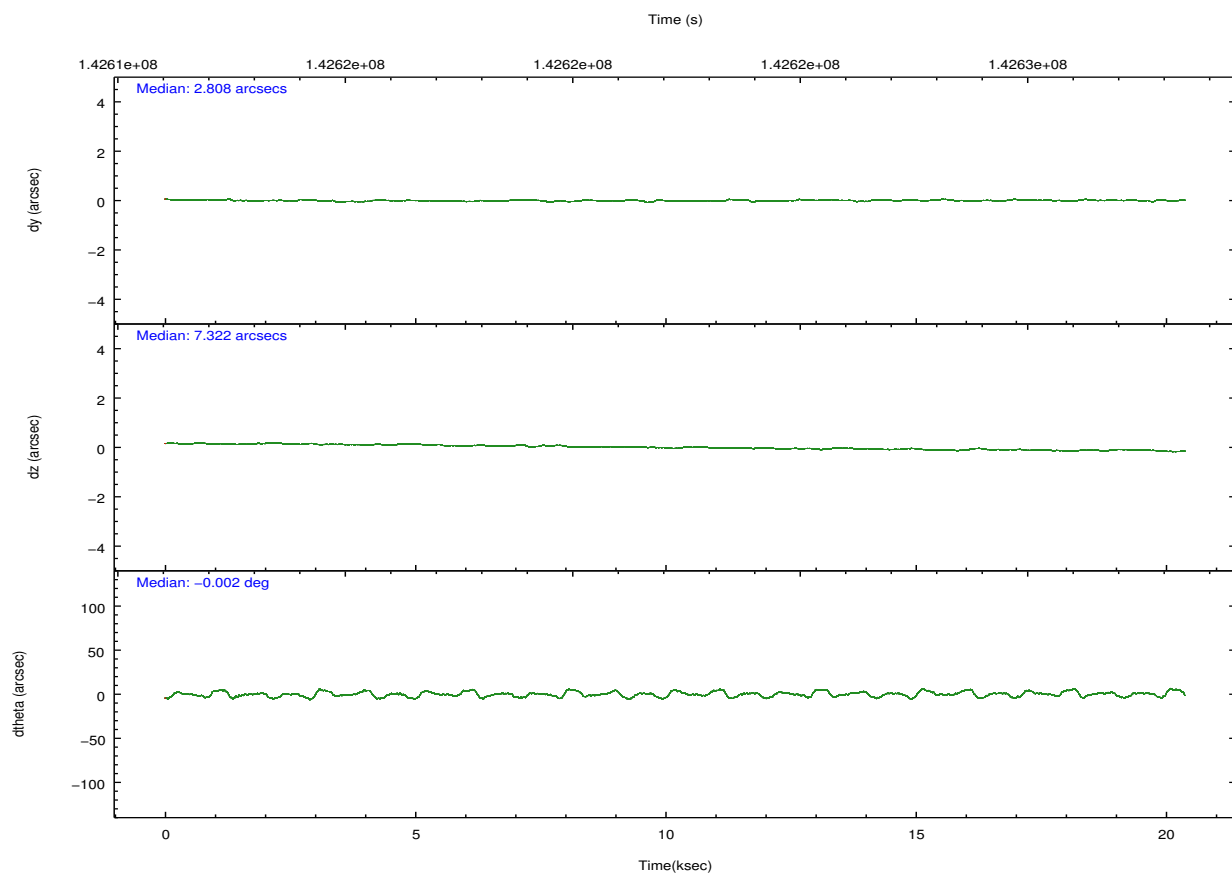
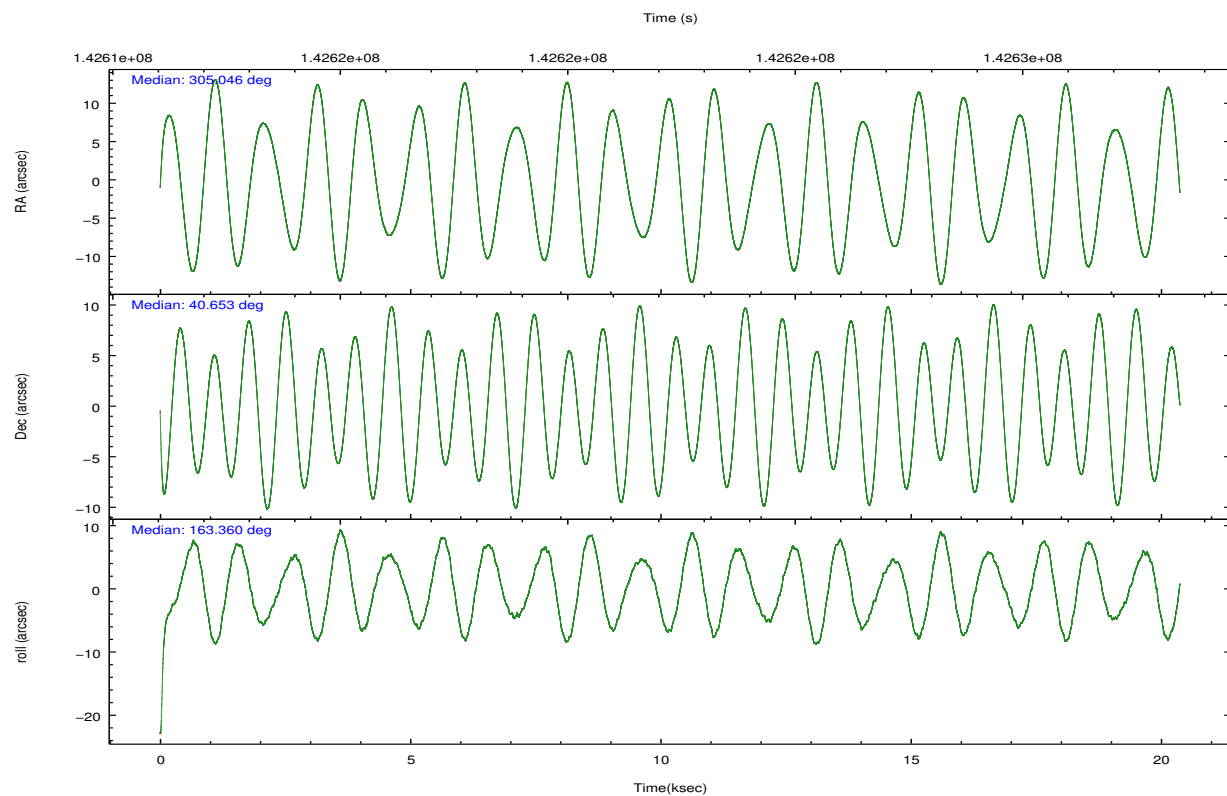
	ccd 0	ccd 1	ccd 2	ccd 3	ccd 6	ccd 7		ccd 0	ccd 1	ccd 2	ccd 3	ccd 6	ccd 7
level 1 events	101304	101879	111840	106121	104981	94347	grade 0 events	8717	7853	5971	5786	5056	4840
rejected events	85487	86586	99339	93921	93222	47464		8%	7%	5%	5%	4%	5%
rejected %	84%	84%	88%	88%	88%	50%	grade 1 events	72	49	59	54	59	86
								0%	0%	0%	0%	0%	0%
							grade 2 events	2733	2586	2564	2275	2271	9924
								2%	2%	2%	2%	2%	10%
							grade 3 events	1315	1356	1109	1089	1207	4652
								1%	1%	0%	1%	1%	4%
							grade 4 events	1191	1357	1086	1158	1175	4644
								1%	1%	0%	1%	1%	4%
							grade 5 events	2906	3197	2594	3226	3453	10083
								2%	3%	2%	3%	3%	10%
							grade 6 events	1861	2144	1774	1893	2053	22832
								1%	2%	1%	1%	1%	24%
							grade 7 events	82509	83337	96683	90640	89707	37286
								81%	81%	86%	85%	85%	39%

## 2.2 Compared Parameters

Parameter	Planned	Actual	Parameter	Planned	Actual
Instrument	ACIS	ACIS	Obspar format version number	7	7
Detector	ACIS-012367	ACIS-012367	Obspar file type	PREDICTED	ACTUAL
Grating	NONE	NONE	Obspar update status	NONE	UPDATED
Data mode	VFAINT	VFAINT	Number of optional ACIS chips dropped	0	0
Observation mode	POINTING	POINTING	On-chip summing requested	N	N
[deg] Pointing RA	305.080372	305.0453007915545	Subarray requested	NONE	NONE
[deg] Pointing Dec	40.659391	40.65297770457374	Alternating exposures requested	N	N
[deg] Pointing Roll	163.129802	163.3613215945138	[s] Primary exposure time	0.000000	3.2
[mm] SIM focus pos	-0.782348	-0.7809083437167272			
[mm] SIM defocus	0	0.001439871863259334			
[mm] SIM translation stage pos	-233.592463	-233.5874344608287			
[mm] SIM translation stage offset	0	-0.005018542100998502			
[s] Observation start time (MET)	142612432.184000	142611377.32693			
Observation start date	2002-07-09T14:32:48	2002-07-09T14:16:17			
[s] Observation end time (MET)	142632432.184000	142633341.02783			
Observation end date	2002-07-09T20:06:08	2002-07-09T20:22:21			
Read mode	TIMED	TIMED			

## 2.3 Aspect



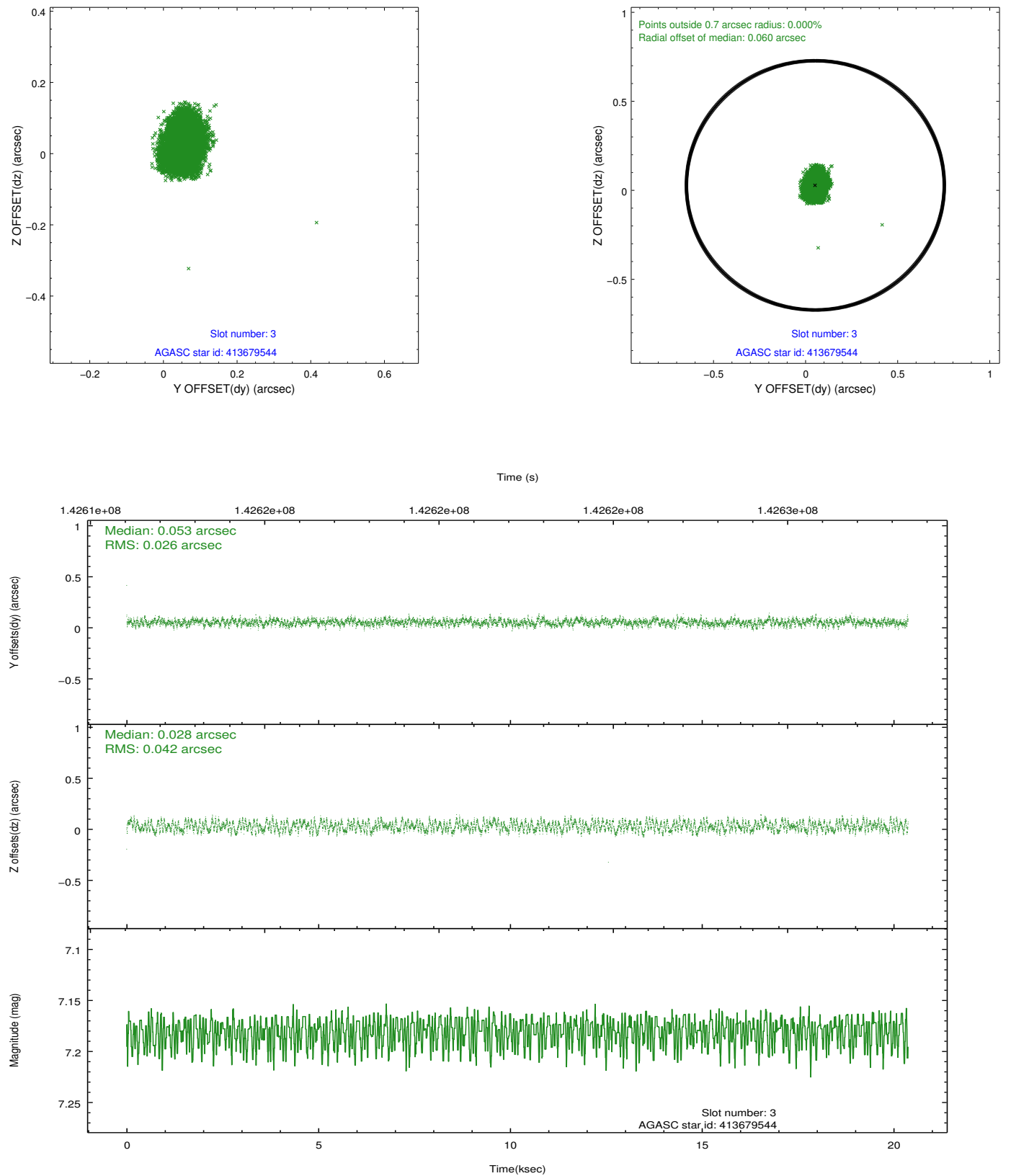


### Slot Statistics

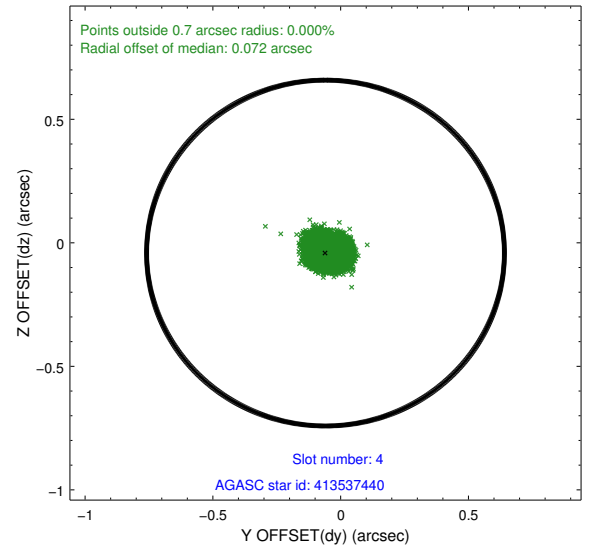
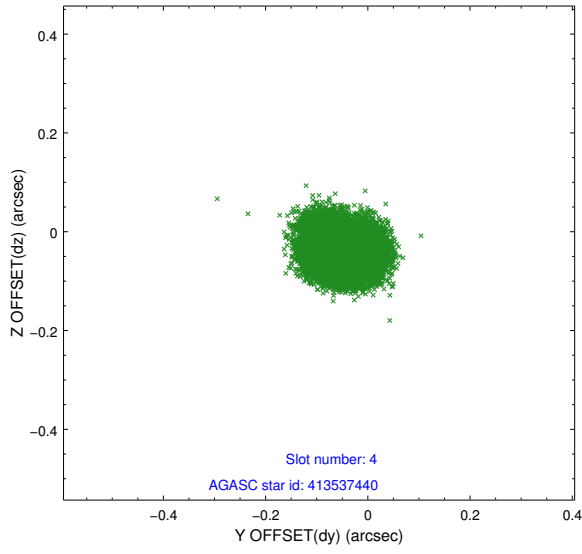
slot	status	id	mag	n_pts	med_dy	med_dz	dr1	dr2	ra	dec	mean_y	mean_z
0	FID	ACIS-I-1	7.25	4970	-0.029	-0.095	0.013	0.020	0.000000	0.000000	936.97	-830.82
1	FID	ACIS-I-3	7.45	4970	0.013	0.153	0.018	0.031	0.000000	0.000000	54.61	-963.98
2	FID	ACIS-I-5	7.22	4970	-0.072	0.013	0.026	0.045	0.000000	0.000000	-1811.28	1066.64
3	GUIDE	413679544	7.18	9938	0.053	0.028	0.054	0.081	305.777919	40.800458	-1668.66	-1044.36
4	GUIDE	413537440	7.60	9937	-0.059	-0.041	0.057	0.089	304.302199	40.591389	1968.08	843.09
5	GUIDE	413669792	8.04	9937	0.063	0.057	0.054	0.088	306.075459	41.023146	-2200.72	-2051.52
6	GUIDE	413543888	8.19	9939	-0.041	-0.013	0.057	0.088	304.596711	40.387769	986.99	1317.55
7	GUIDE	413544576	8.39	9936	-0.020	-0.028	0.047	0.077	304.435217	40.506862	1533.38	1032.46

## 2.4 Star Slots

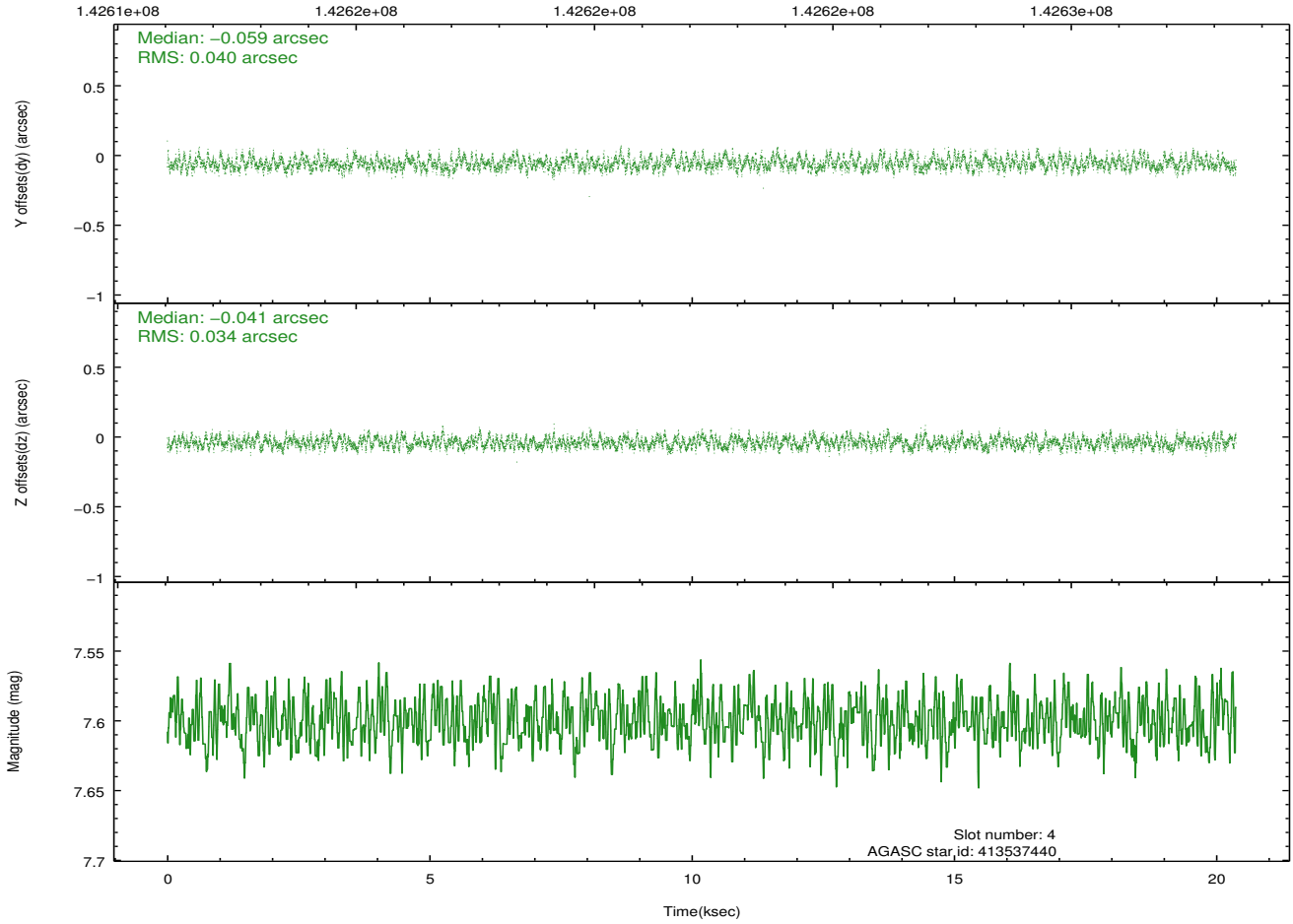
### 2.4.1 Slot 3



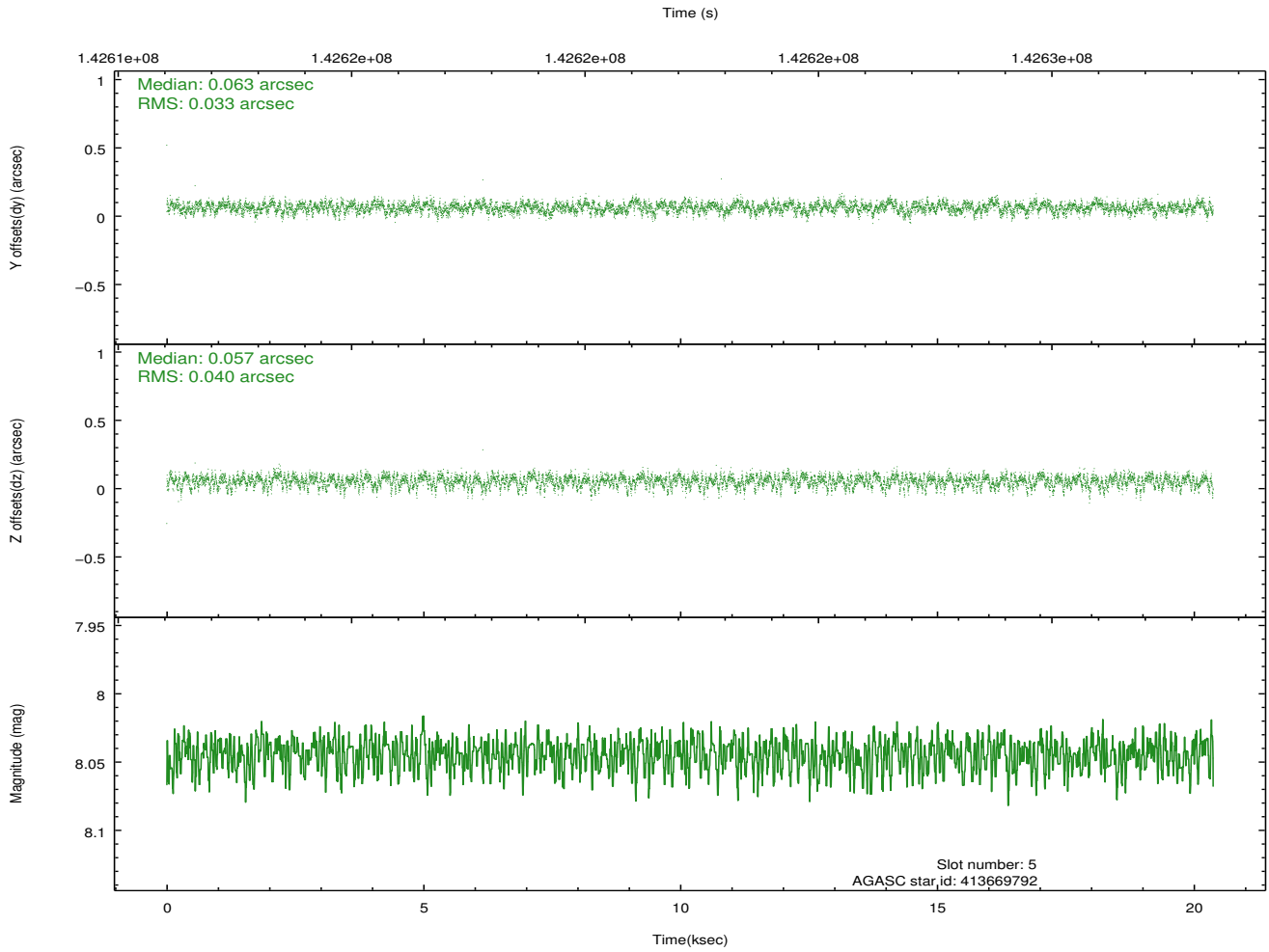
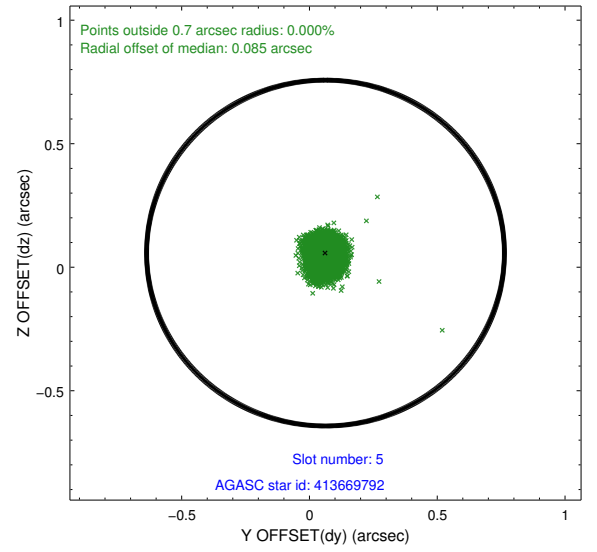
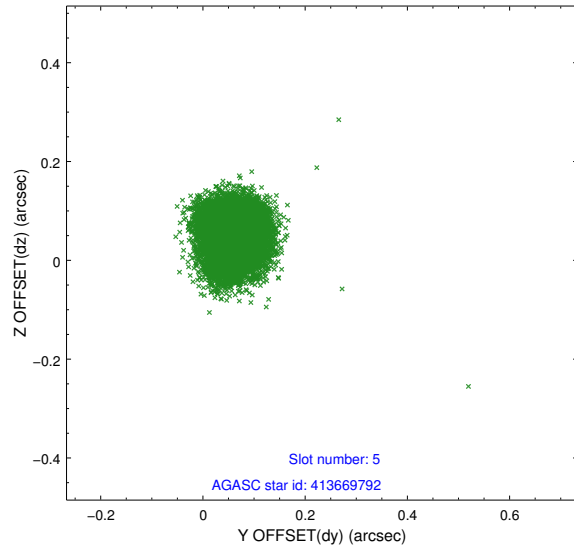
## 2.4.2 Slot 4



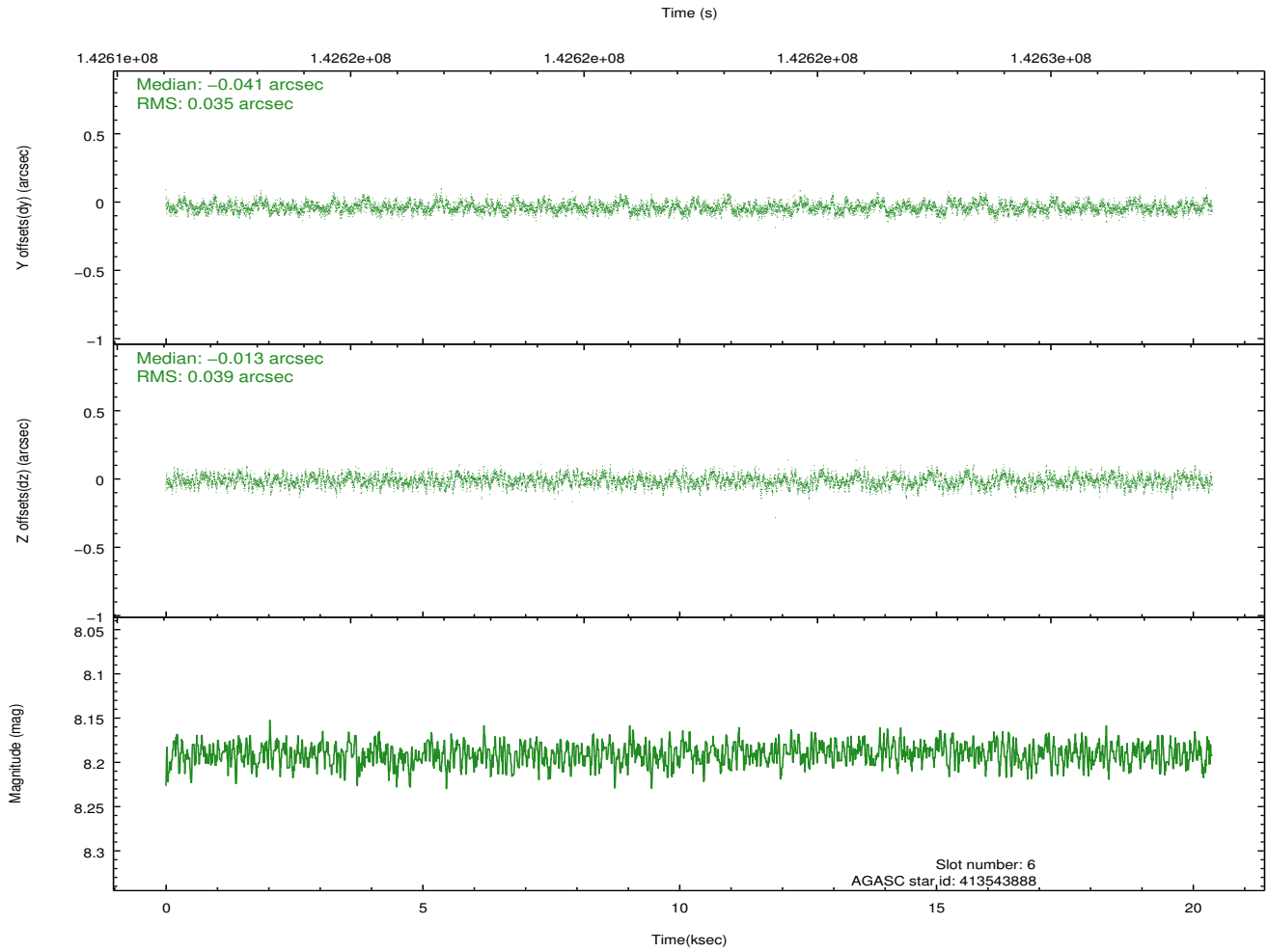
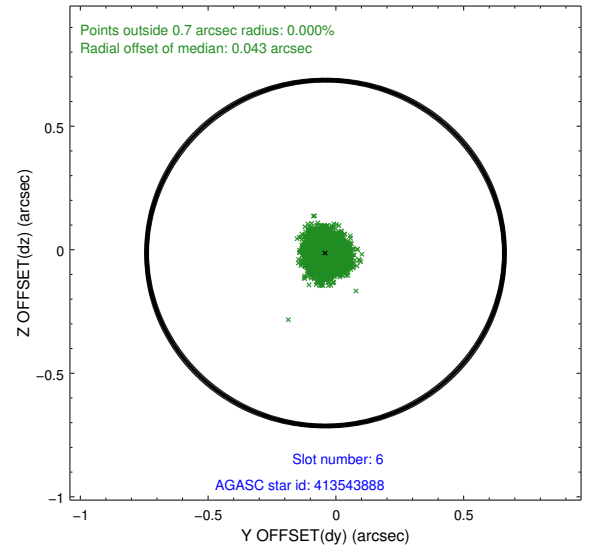
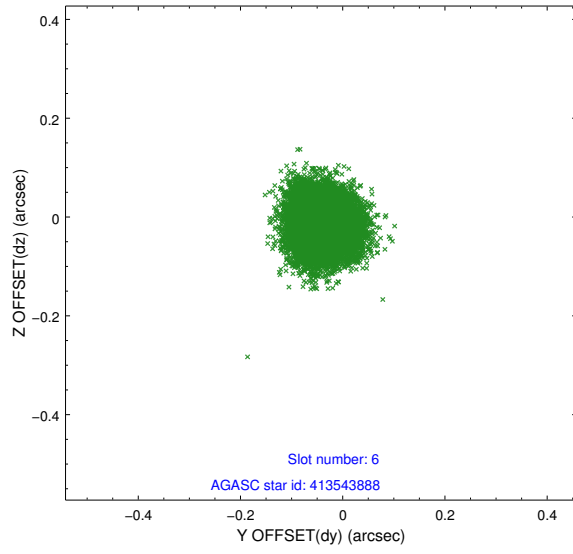
Time (s)



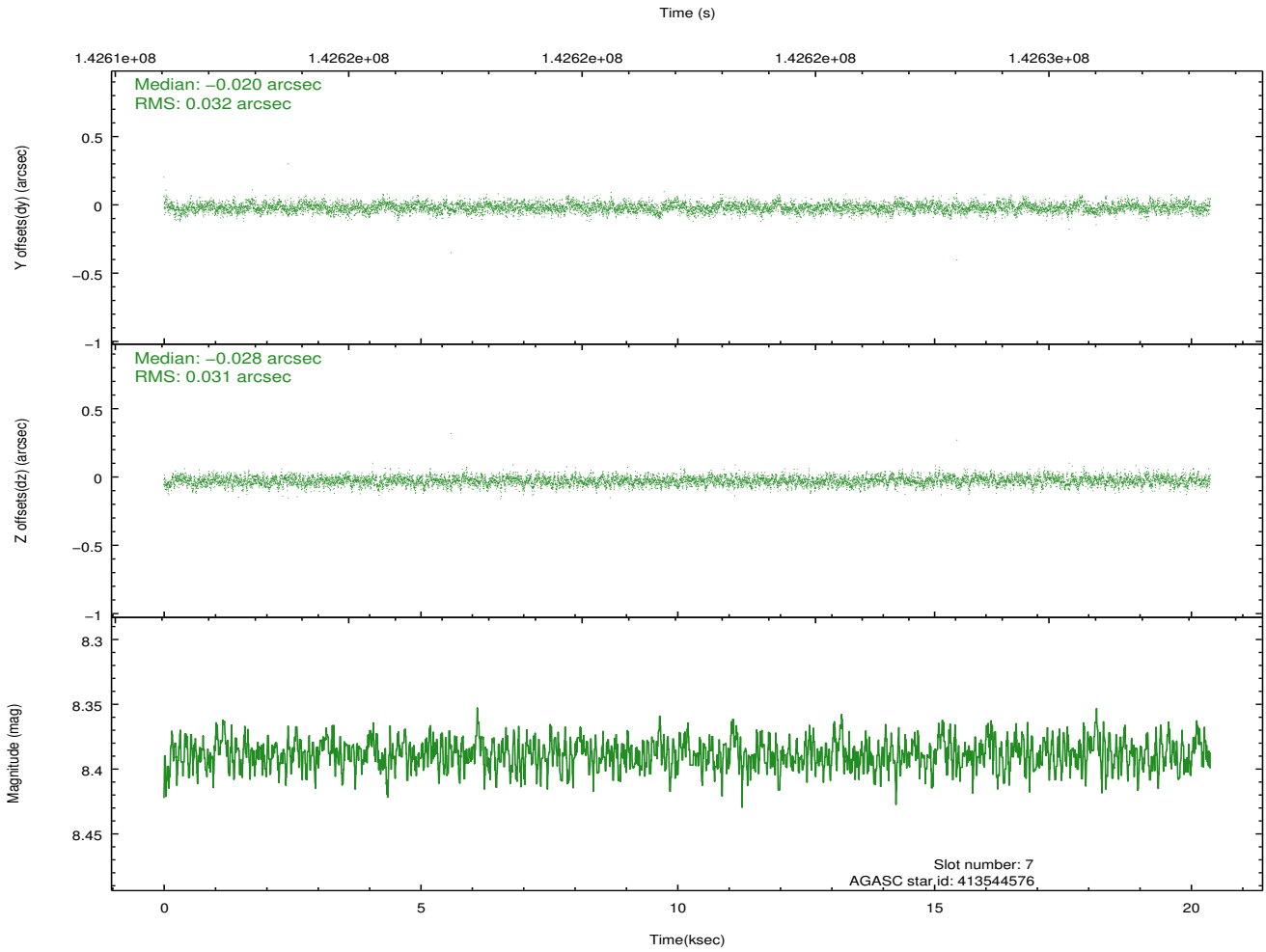
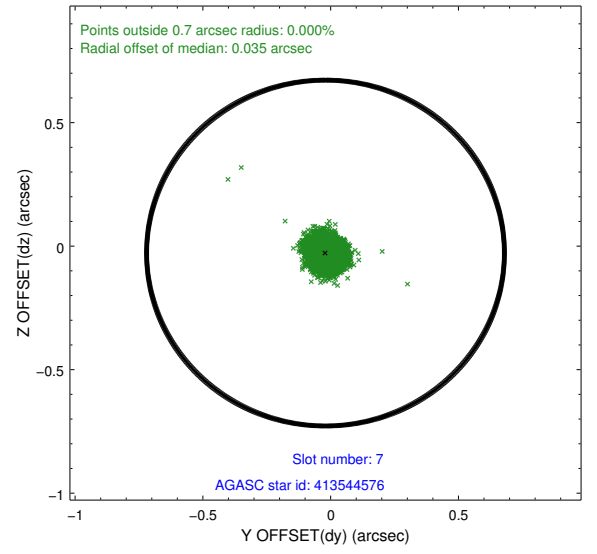
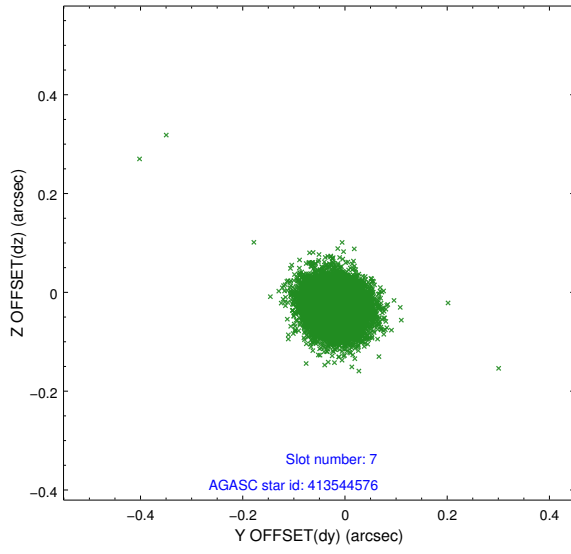
### 2.4.3 Slot 5



## 2.4.4 Slot 6

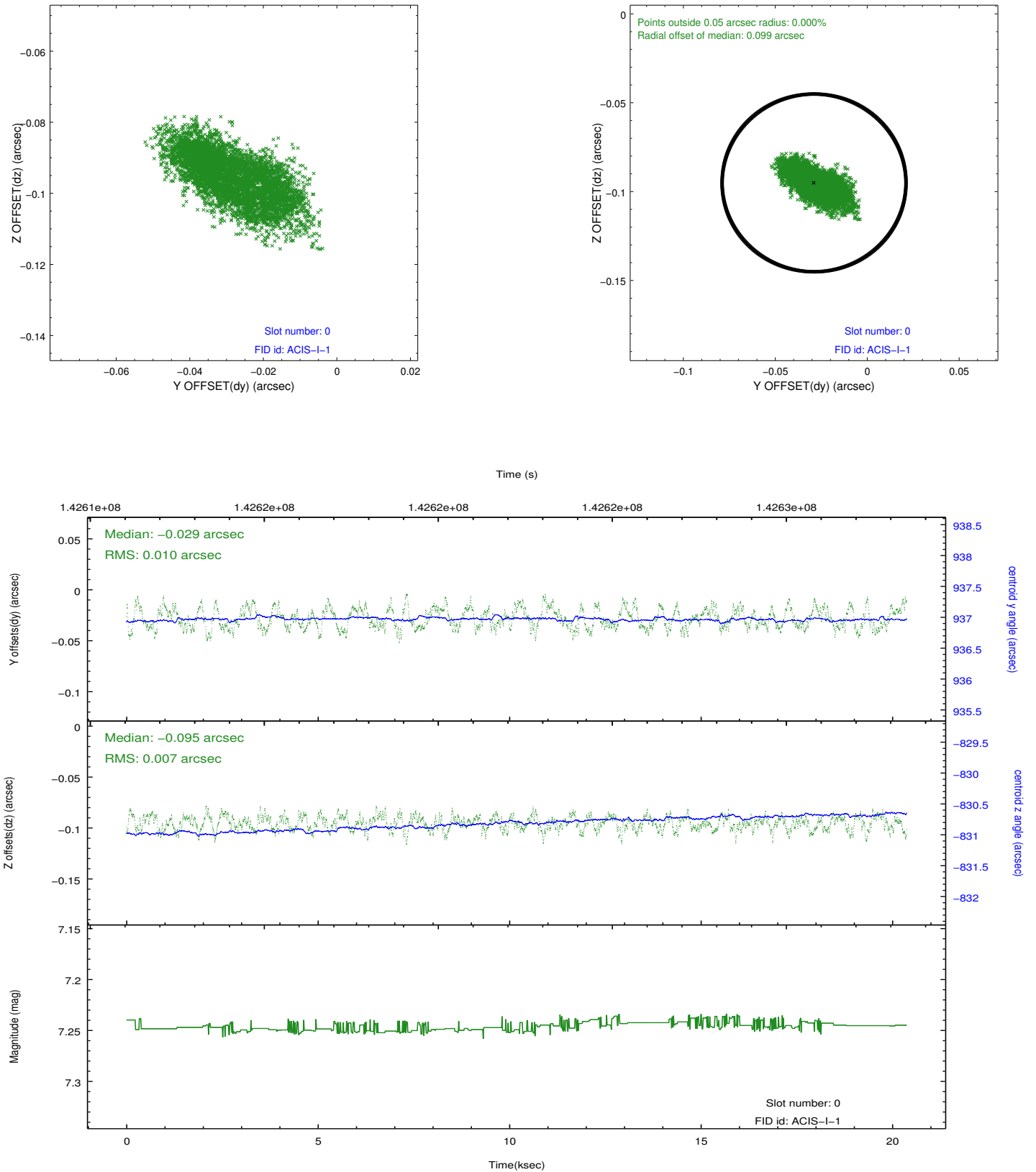


## 2.4.5 Slot 7

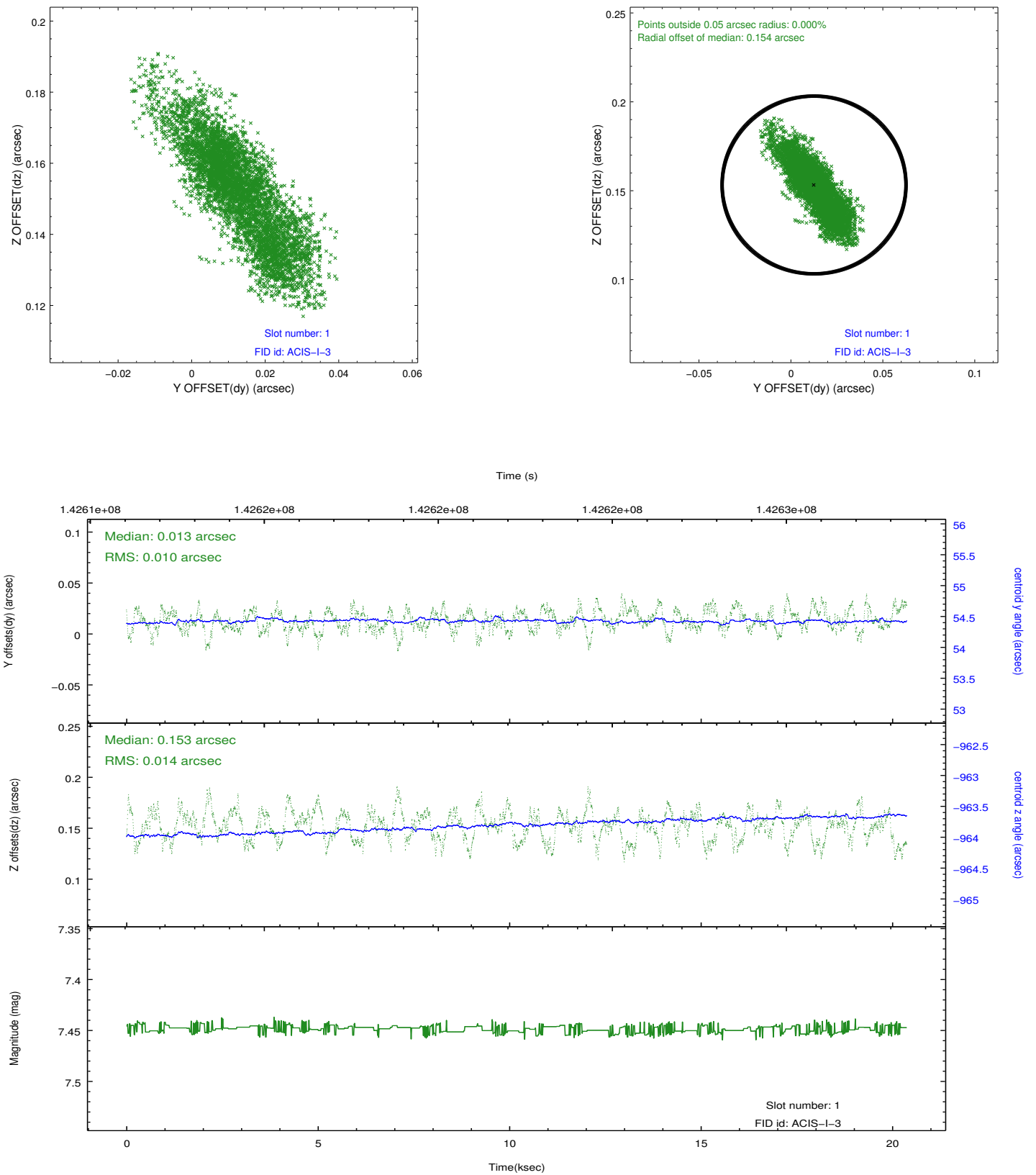


## 2.5 FID Slots

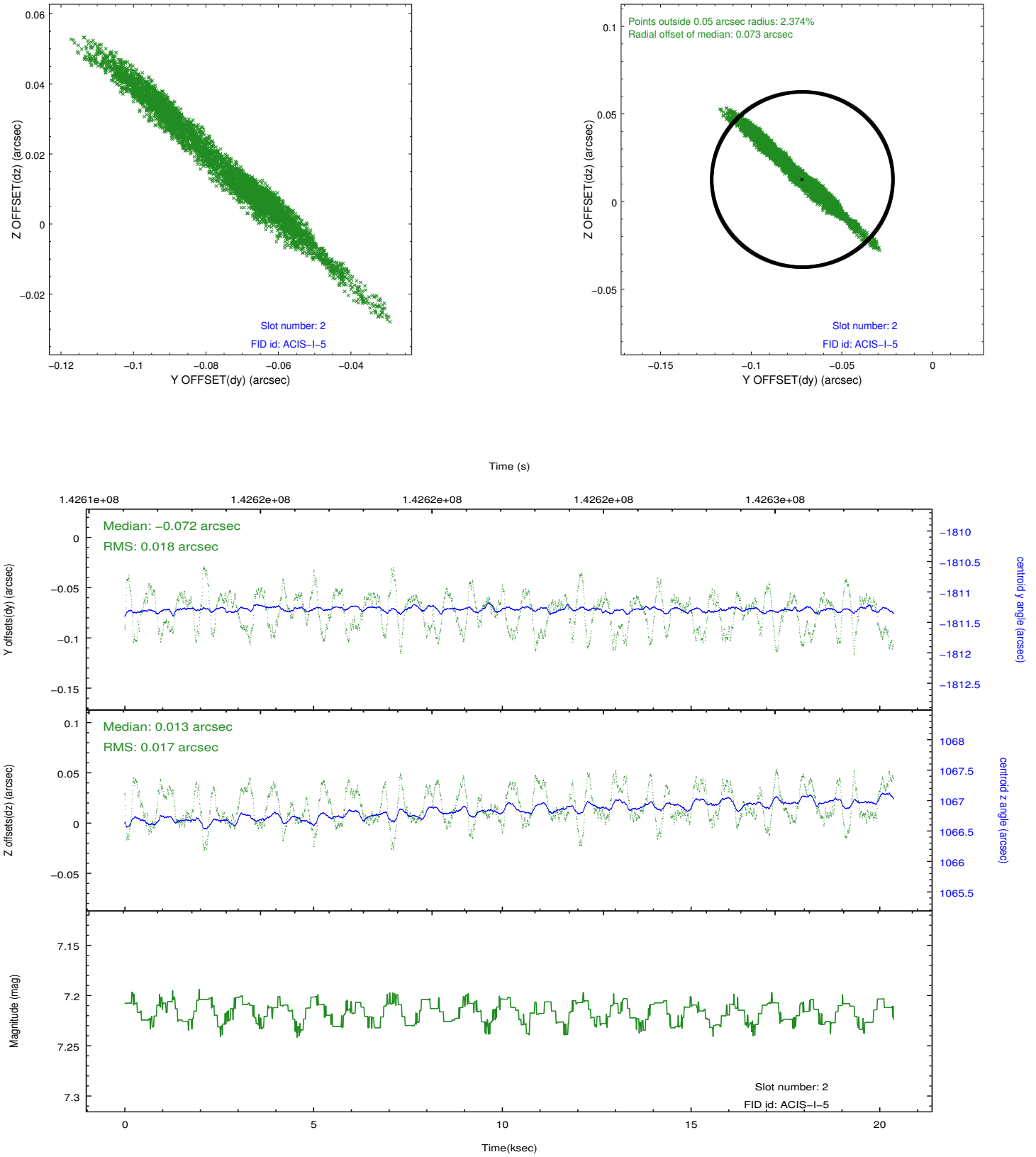
### 2.5.1 Slot 0



## 2.5.2 Slot 1



### 2.5.3 Slot 2



## A Summary

### A.1 Status

V&V Scientist	Jen Lauer
V&V Date (YYYY-MM-DD)	2012.10.19
V&V Edition	1
V&V Disposition and Status	OK
V&V Charge Time	19.964

### A.2 Comments