

V&V Reference Report

L2 ASCDS Version : 7.6.8.1

Observation 2796 - L2 Version 001
Chandra X-Ray Center

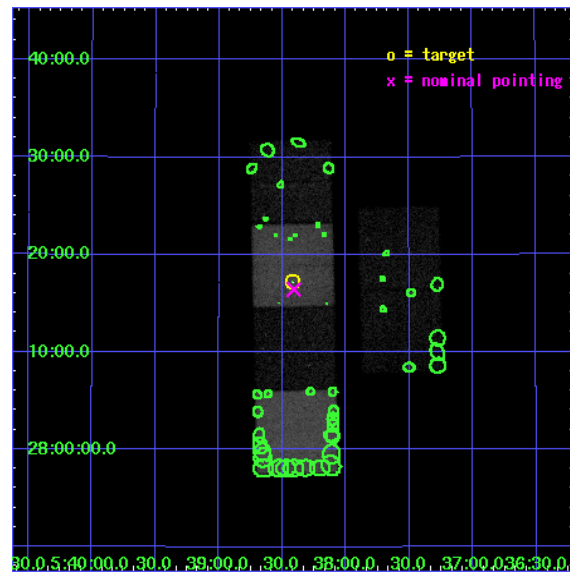
L2 Processing Date : Aug 31 2006

Contents

1	Front	2
2	OBI	3
2.1	OBI	3
2.1.1	Images	3
2.1.2	Bias	3
2.1.3	Parameters	4
2.1.4	Events	4
2.2	Compared Parameters	5
2.3	Aspect	6
2.4	Star Slots	9
2.4.1	Slot 3	9
2.4.2	Slot 4	10
2.4.3	Slot 5	11
2.4.4	Slot 6	12
2.4.5	Slot 7	13
2.5	FID Slots	14
2.5.1	Slot 0	14
2.5.2	Slot 1	15
2.5.3	Slot 2	16
3	Point Sources	17
A	Summary	18
A.1	Status	18
A.2	Comments	18

1 Front

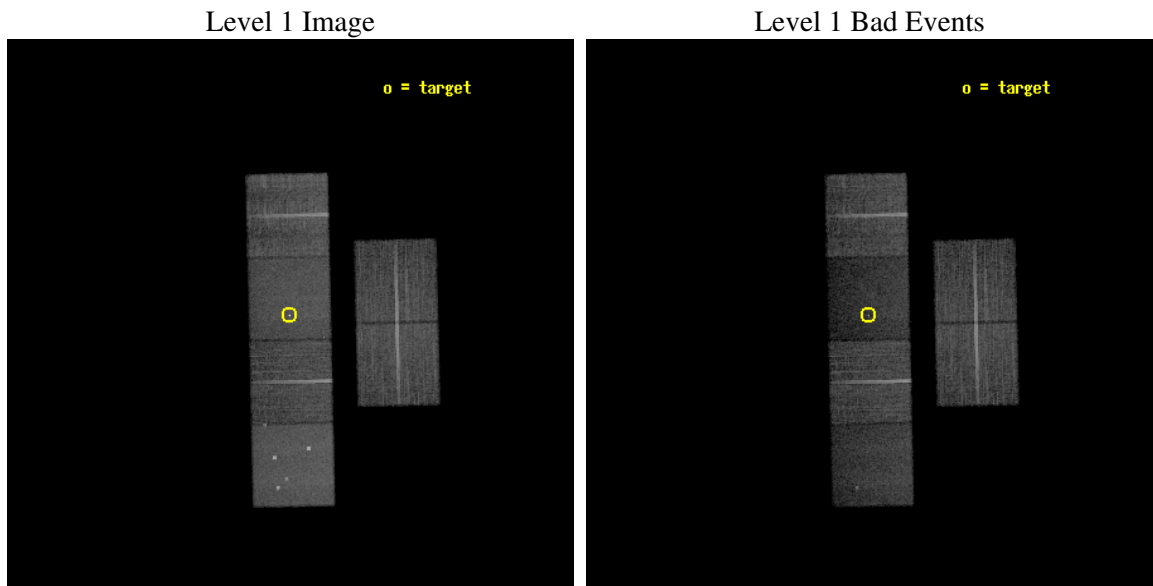
seq_num	500246
obs_id	2796
title	PULSAR WIND TORI: NEUTRON STAR LINEAR AND ANGULAR MOMENTA
observer	Prof. Roger Romani
object	PSR J0538+2817
dtcycle	0
cycle	P
ra_targ	84.604583
dec_targ	28.286389
ra_nom	84.60233340239
dec_nom	28.274031434661
roll_nom	268.70874019717
revision	3
ontime	19760.000018403
livetime	19509.787000126
ontime2	19760.000018403
ontime3	19753.518067971
ontime5	19760.000018403
ontime6	19760.000018403
ontime7	19760.000018403
ontime8	19756.759058148
l2events	171184



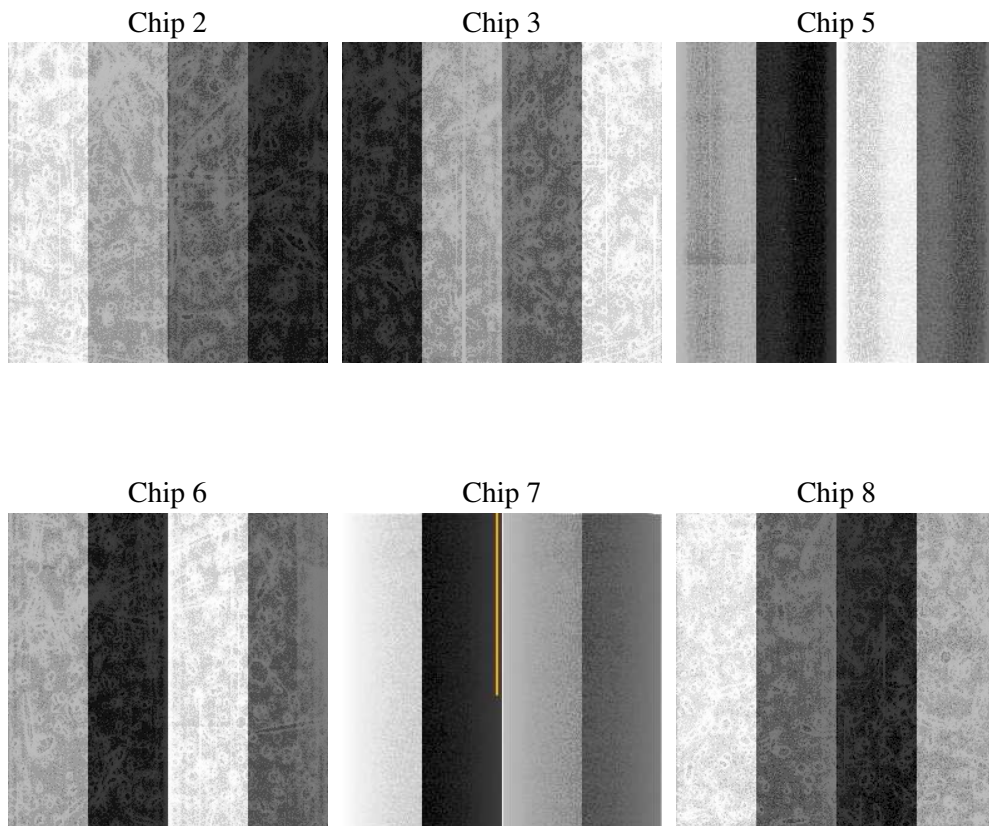
2 OBI

2.1 OBI

2.1.1 Images



2.1.2 Bias



2.1.3 Parameters

obi_num	0
ascdsver	7.6.8.1
caldbver	3.2.3
date	2006-08-31T16:02:46
revision	3

sched_exp_time	19800.000000
ontime	19766.874067664
ontime2	19766.874067664
ontime3	19760.392117232
ontime5	19766.874067664
ontime6	19766.874067664
ontime7	19766.874067664
ontime8	19763.633107409
l1events	703033

2.1.4 Events

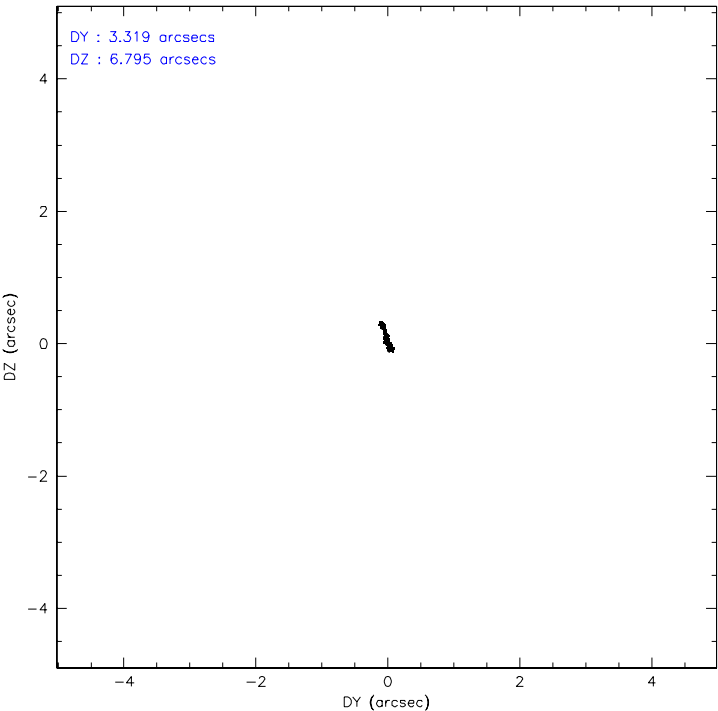
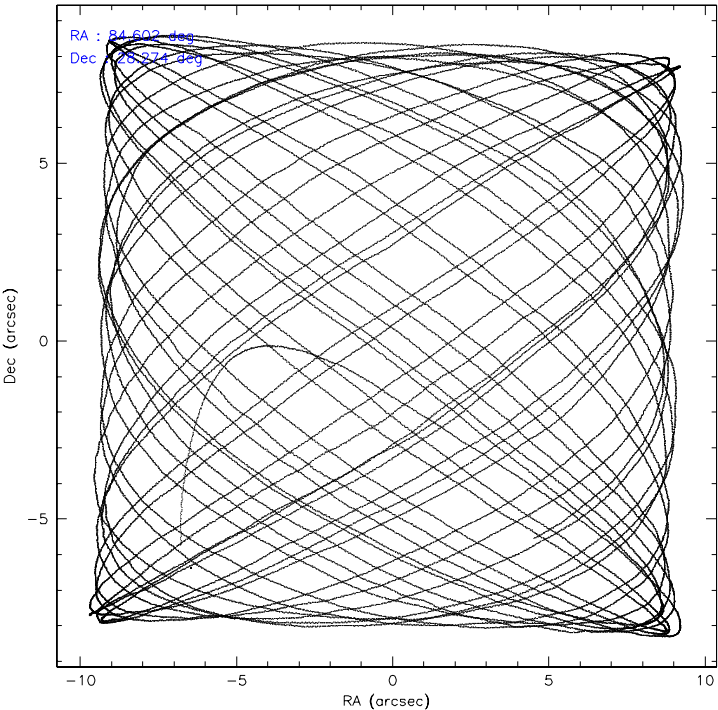
	ccd 2	ccd 3	ccd 5	ccd 6	ccd 7	ccd 8
level 1 events	112820	100898	141817	104403	115270	127825
rejected events	103026	91649	60816	93474	51732	98890
rejected %	91%	90%	42%	89%	44%	77%

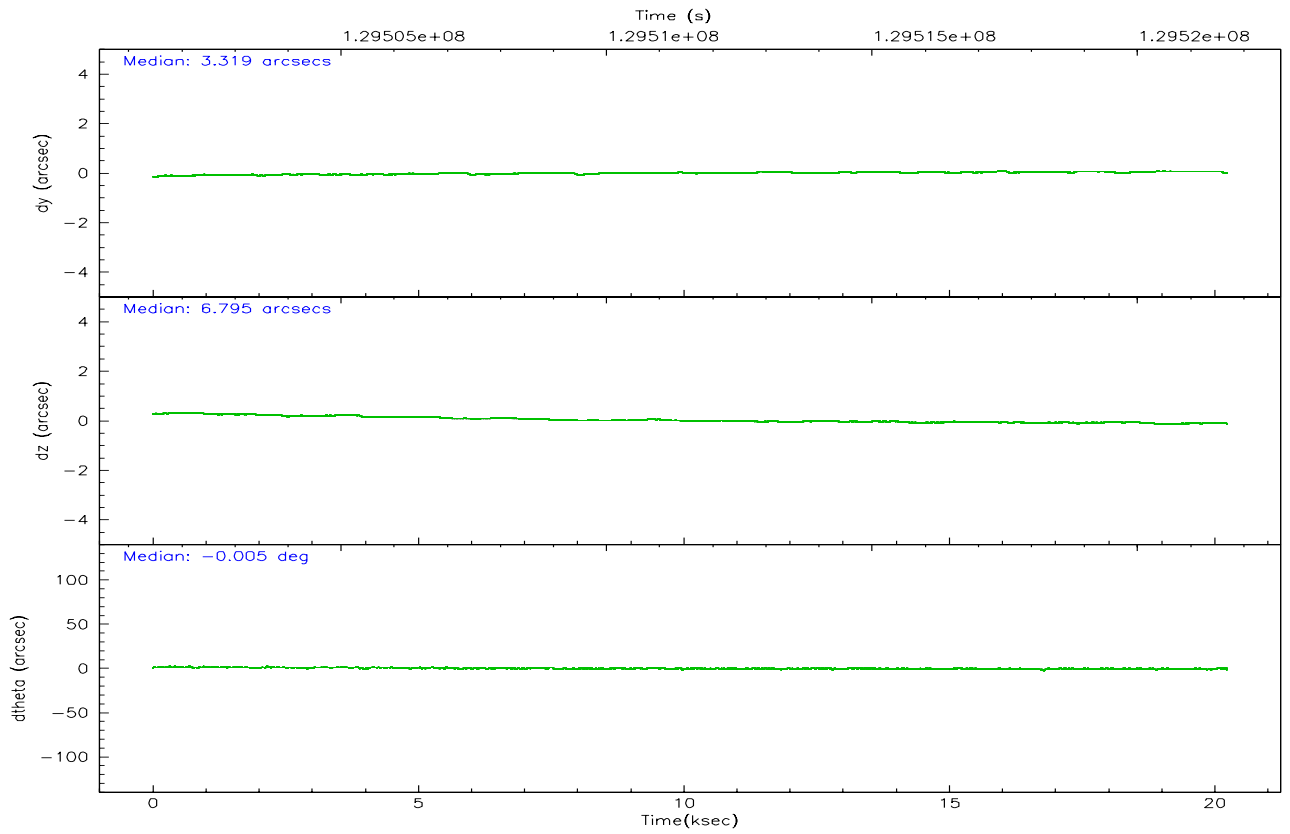
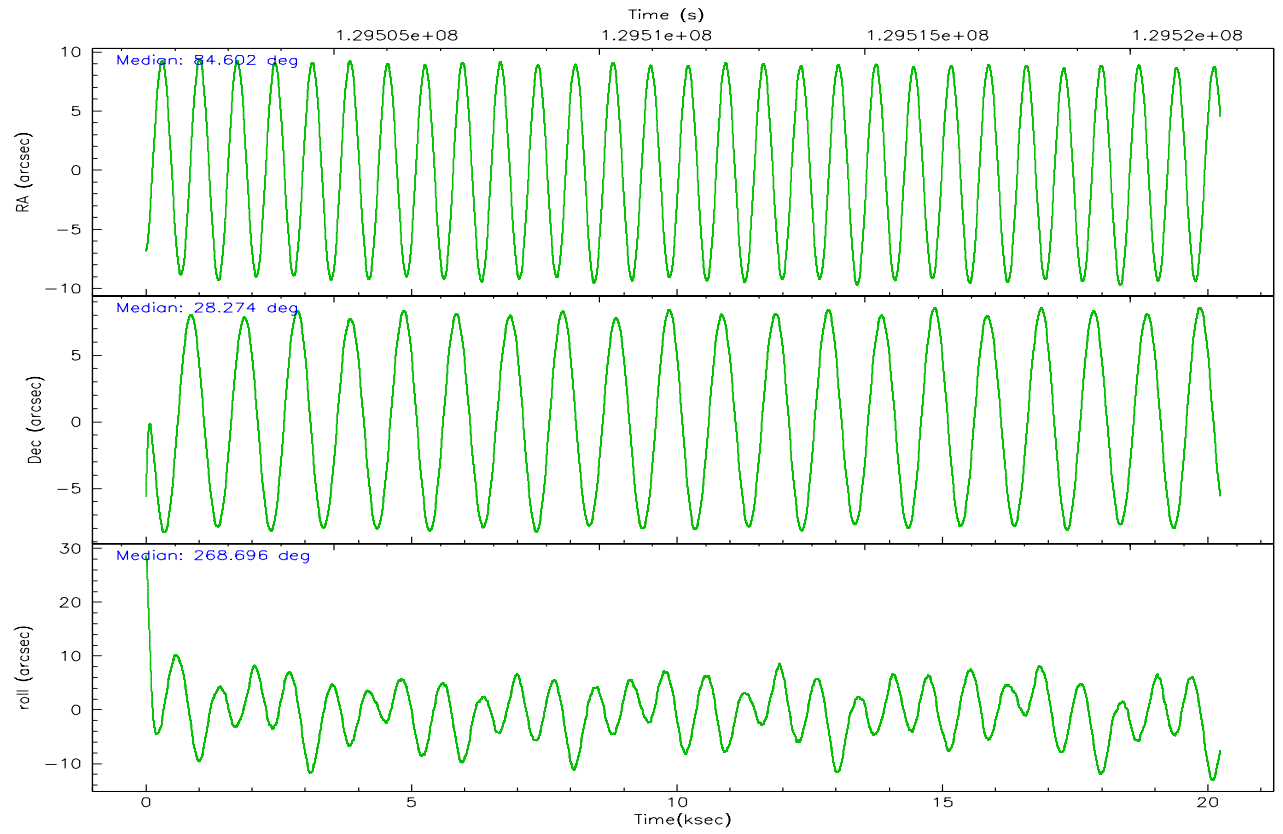
	ccd 2	ccd 3	ccd 5	ccd 6	ccd 7	ccd 8
grade 0 events	3755	3638	11042	4555	5995	8681
	3%	3%	7%	4%	5%	6%
grade 1 events	43	49	52	57	103	82
	0%	0%	0%	0%	0%	0%
grade 2 events	2290	1892	25329	2191	15635	6381
	2%	1%	17%	2%	13%	4%
grade 3 events	1026	988	2627	1205	4455	3300
	0%	0%	1%	1%	3%	2%
grade 4 events	1027	1017	2459	1094	4274	2907
	0%	1%	1%	1%	3%	2%
grade 5 events	2674	3107	6930	3438	7600	4762
	2%	3%	4%	3%	6%	3%
grade 6 events	1698	1718	39571	1889	33203	7667
	1%	1%	27%	1%	28%	5%
grade 7 events	100307	88489	53807	89974	44005	94045
	88%	87%	37%	86%	38%	73%

2.2 Compared Parameters

Parameter	Planned	Actual	Parameter	Planned	Actual
Instrument	ACIS	ACIS	Obspar format version number	6	6
Detector	ACIS-235678	ACIS-235678	Obspar file type	PREDICTED	ACTUAL
Grating	NONE	NONE	Obspar update status	NONE	UPDATED
Data mode	VFAINT	VFAINT	On-chip summing requested	N	N
Observation mode	POINTING	POINTING	Subarray requested	NONE	NONE
Pointing RA	84.587108	84.60233340238985	Alternating exposures requested	N	N
Pointing Dec	28.297777	28.27403143466073	Primary exposure time	0.000000	3.2
Pointing Roll	268.559304	268.7087401971666			
SIM focus pos (mm)	-0.684267	-0.6828225247311905			
SIM defocus (mm)	0	0.001444936568705701			
SIM translation stage pos (mm)	-190.132523	-190.1425803651734			
SIM translation stage offset (mm)	0	0.01005778216563158			
Observation start time	129501889.184000	129500805.25599			
Observation start date	2002-02-07T20:43:45	2002-02-07T20:26:45			
Observation end time	129521689.184000	129522296.43186			
Observation end date	2002-02-08T02:13:45	2002-02-08T02:24:56			
Read mode	TIMED	TIMED			

2.3 Aspect



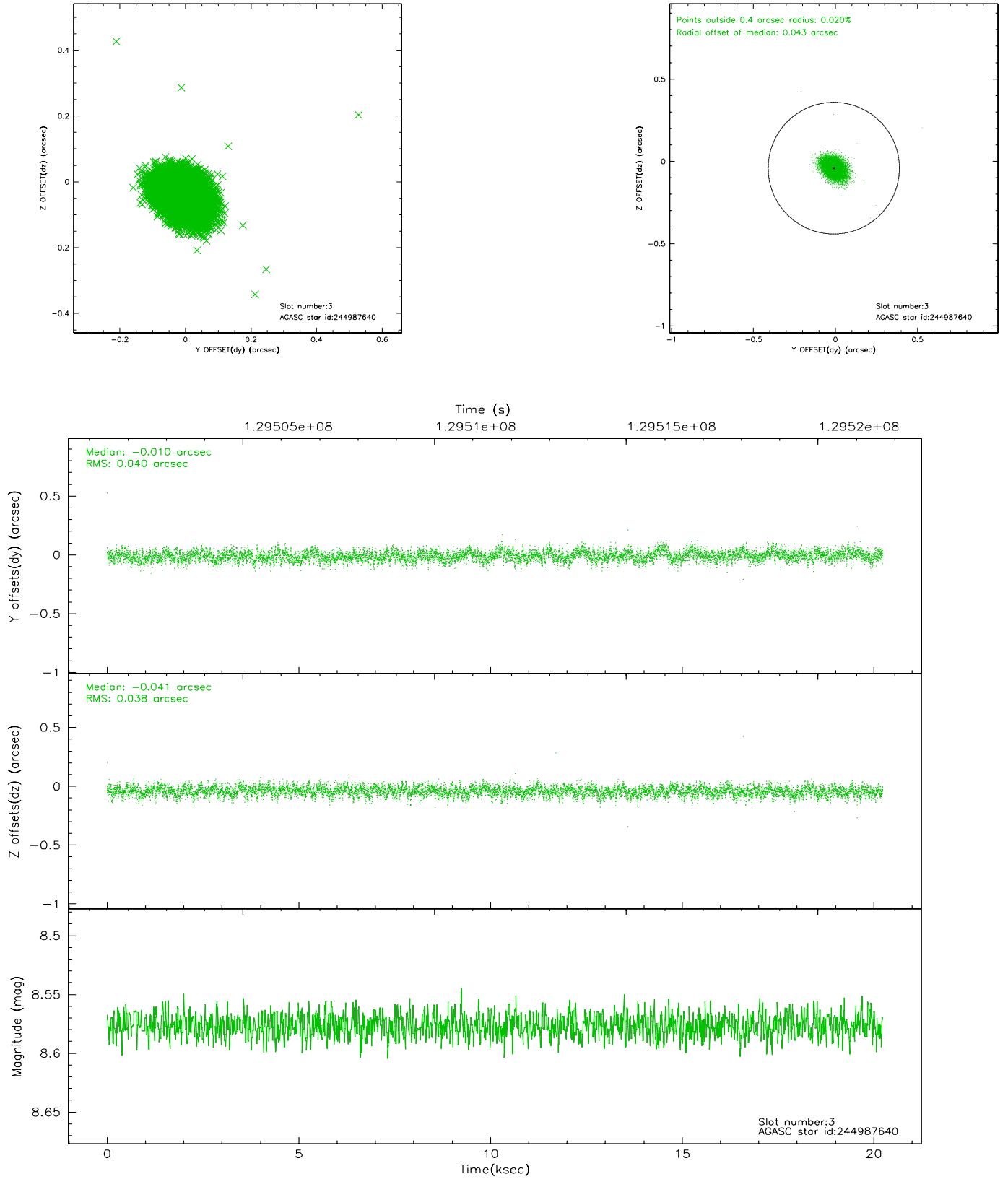


Slot Statistics

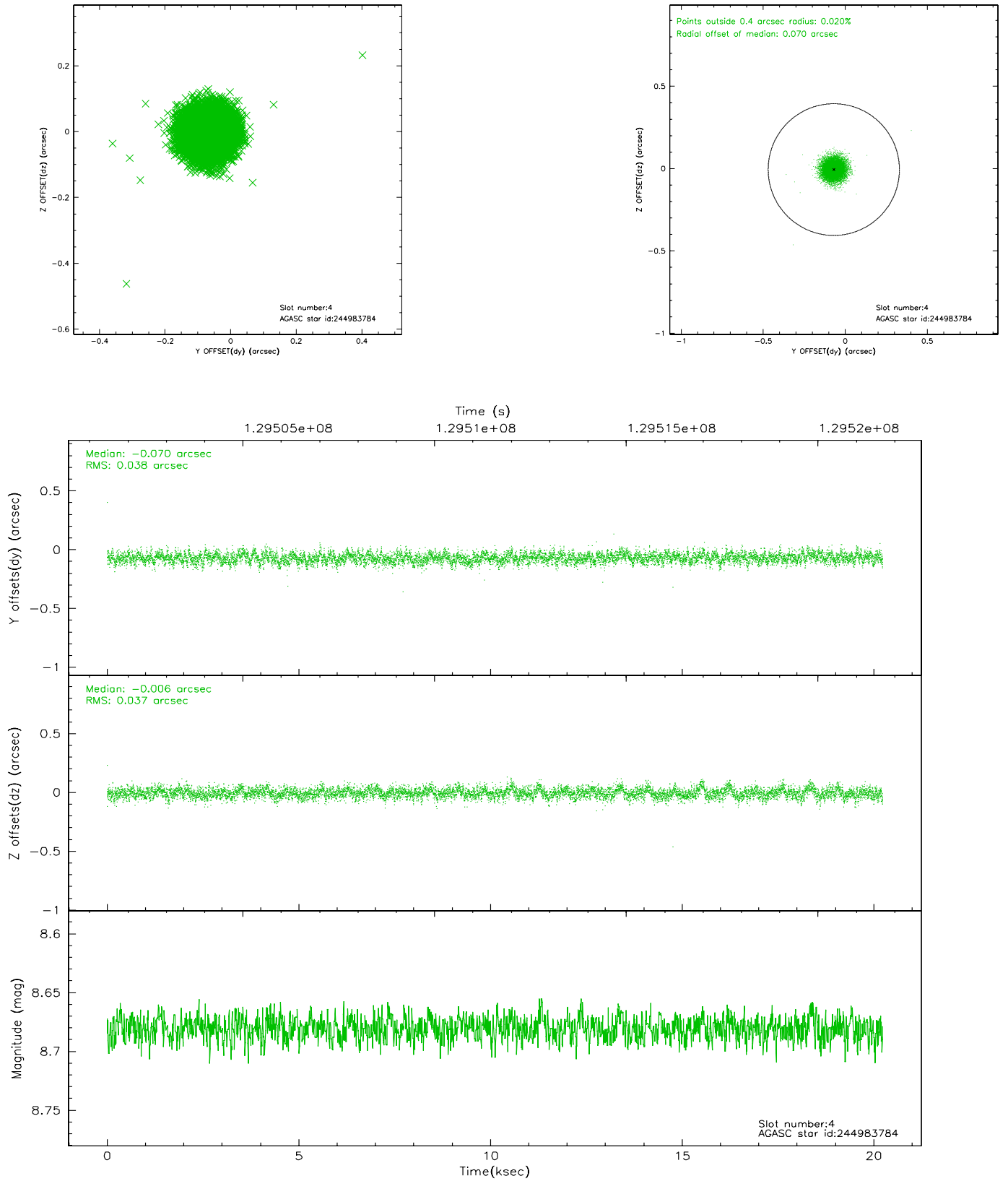
slot	status	id	mag	n_pts	med_dy	med_dz	dr1	dr2	ra	dec	mean_y	mean_z
0	FID	ACIS-S-2	7.12	4935	-0.008	0.030	0.008	0.013	0.000000	0.000000	-755.96	-1727.93
1	FID	ACIS-S-4	7.20	4934	-0.052	-0.004	0.008	0.014	0.000000	0.000000	2157.17	180.36
2	FID	ACIS-S-5	7.24	4934	0.029	-0.017	0.008	0.013	0.000000	0.000000	-1808.55	174.19
3	GUIDE	244987640	8.58	9866	-0.010	-0.041	0.058	0.096	84.165830	27.911751	1422.26	-1304.98
4	GUIDE	244983784	8.68	9869	-0.070	-0.006	0.056	0.092	84.780149	28.001156	1052.86	639.98
5	GUIDE	244986520	9.36	9866	0.104	0.245	0.087	0.151	85.259892	27.682776	2154.59	2200.16
6	GUIDE	244985992	9.42	9836	0.005	-0.127	0.112	0.184	83.839346	27.820088	1773.90	-2337.04
7	GUIDE	245499976	9.47	9860	-0.026	-0.066	0.077	0.128	84.250710	28.199162	381.99	-1058.65

2.4 Star Slots

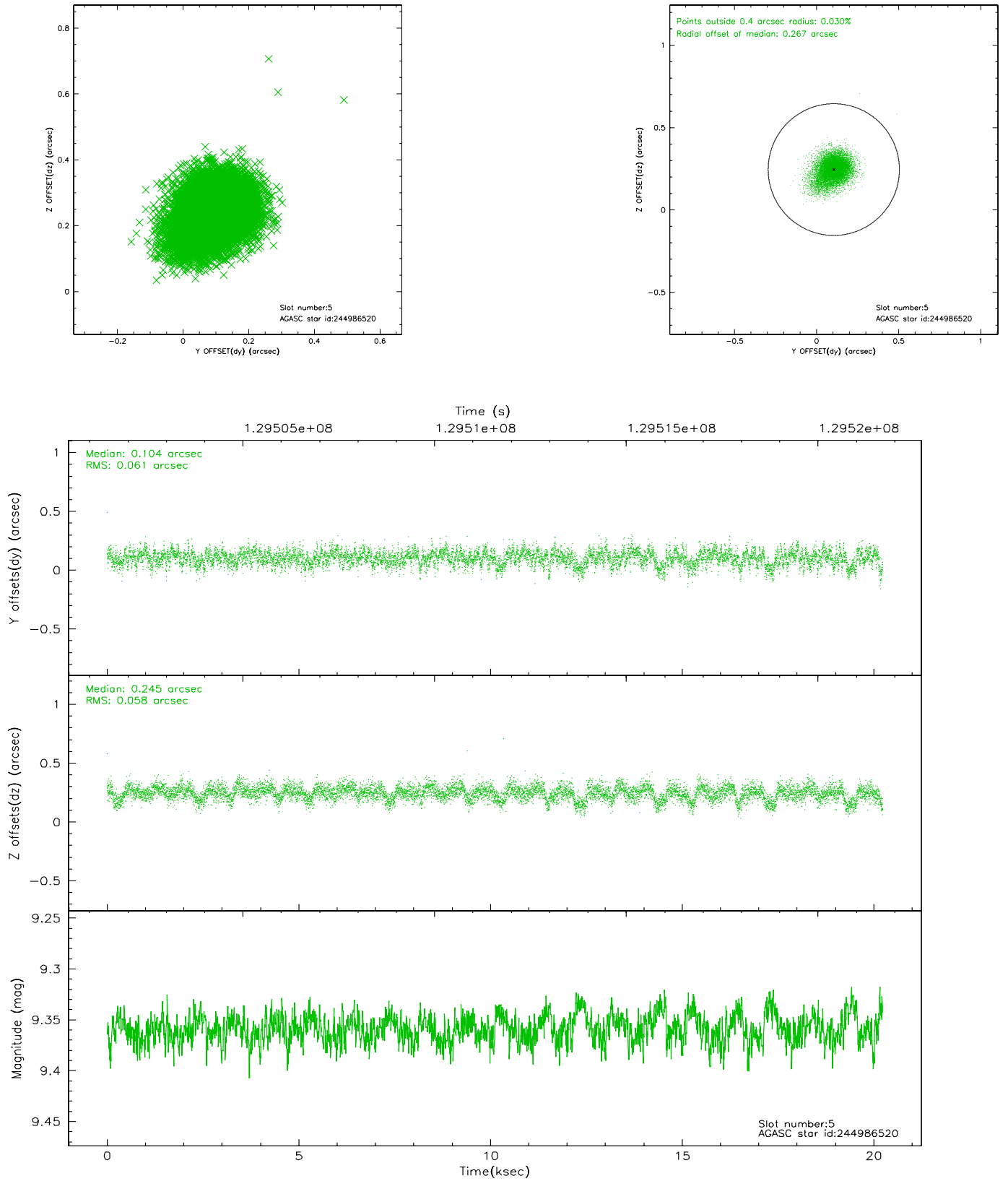
2.4.1 Slot 3



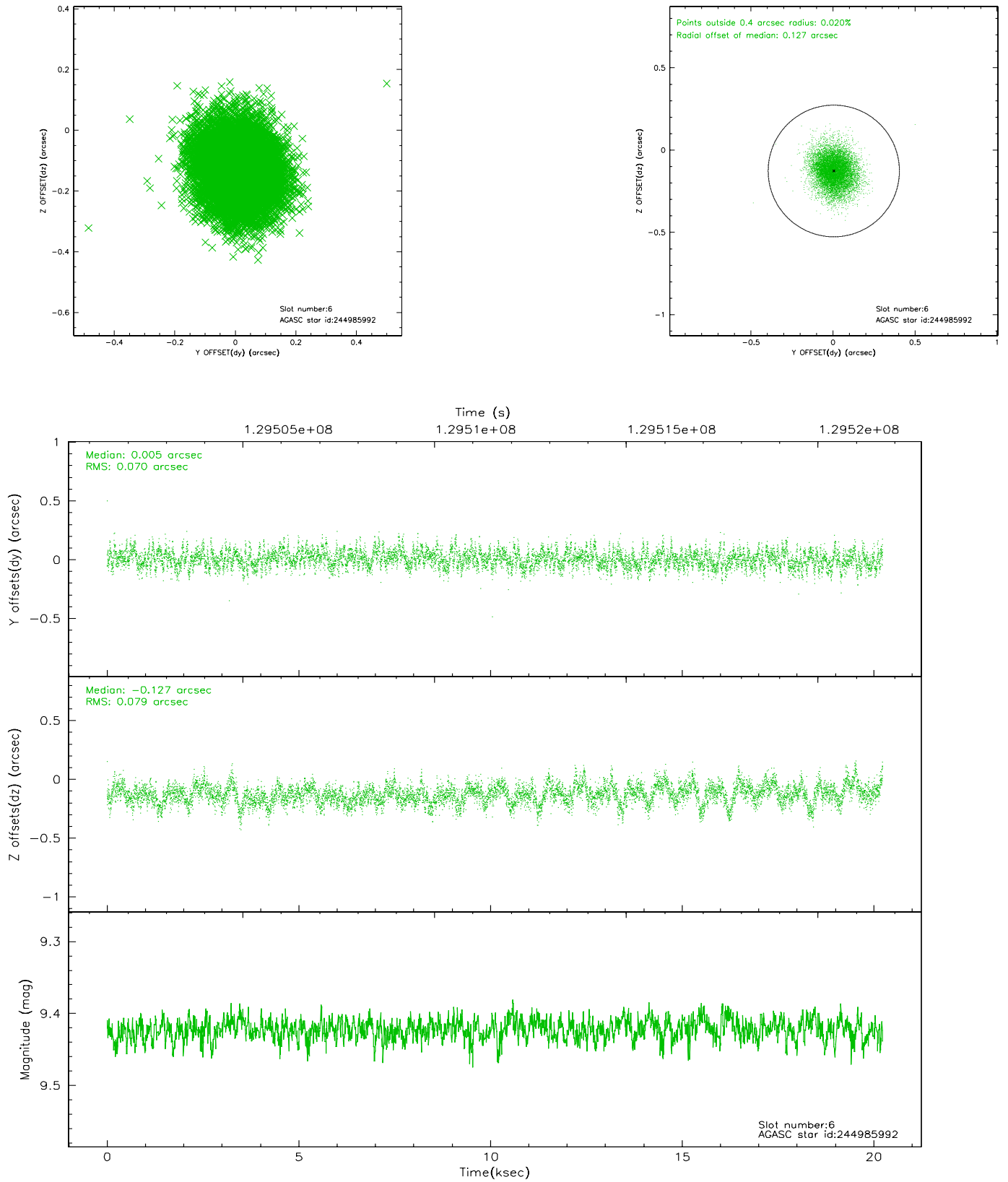
2.4.2 Slot 4



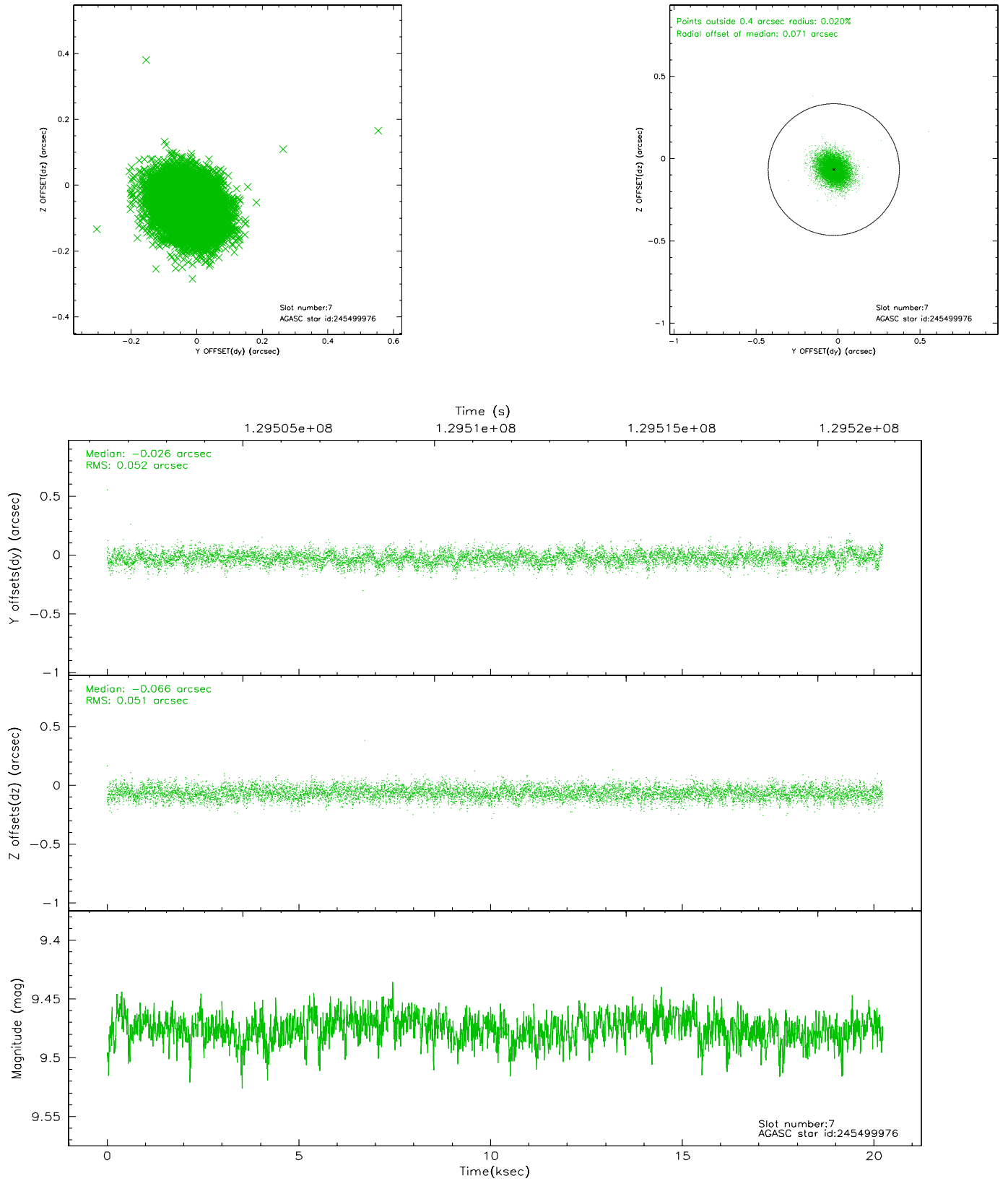
2.4.3 Slot 5



2.4.4 Slot 6

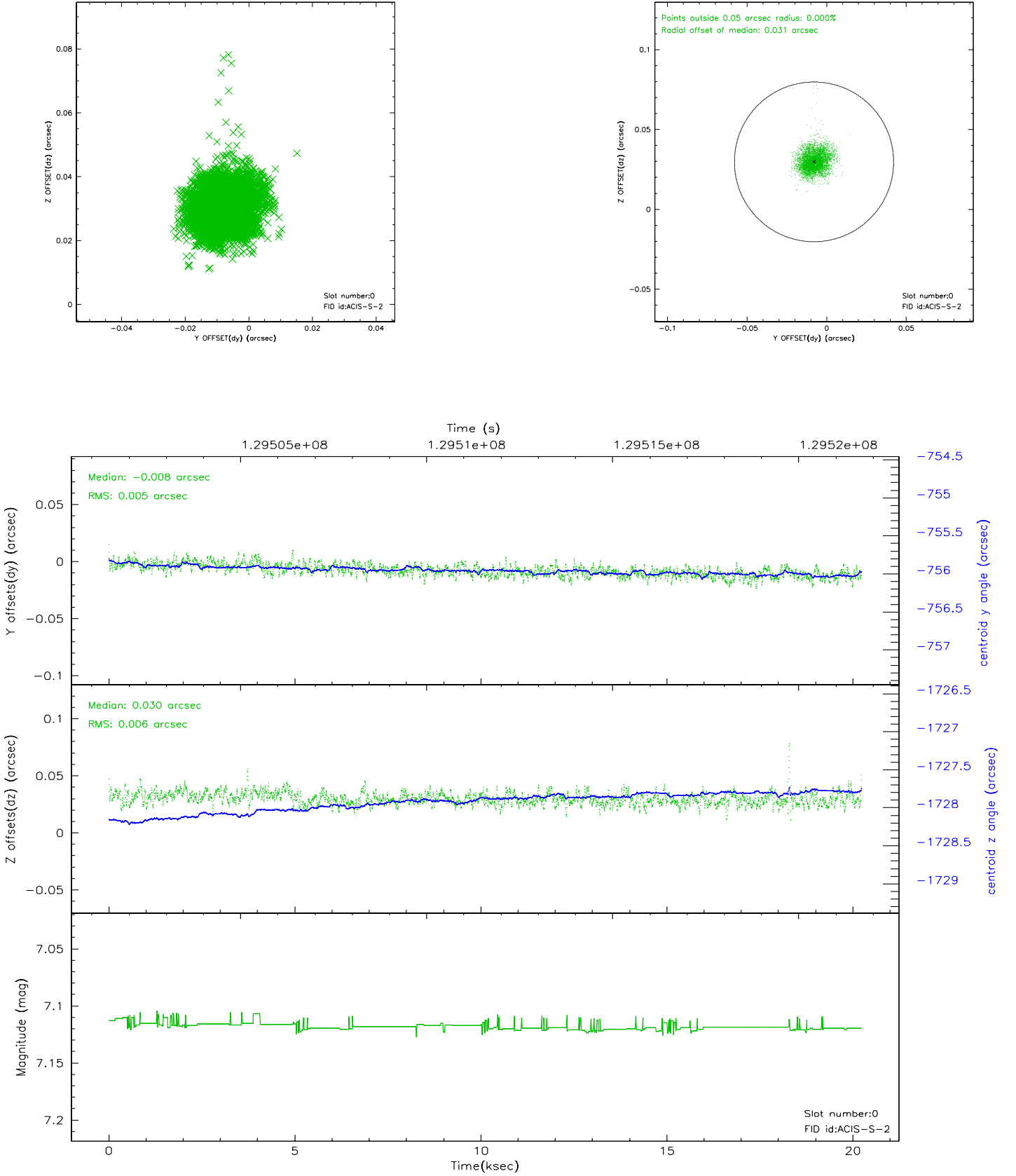


2.4.5 Slot 7

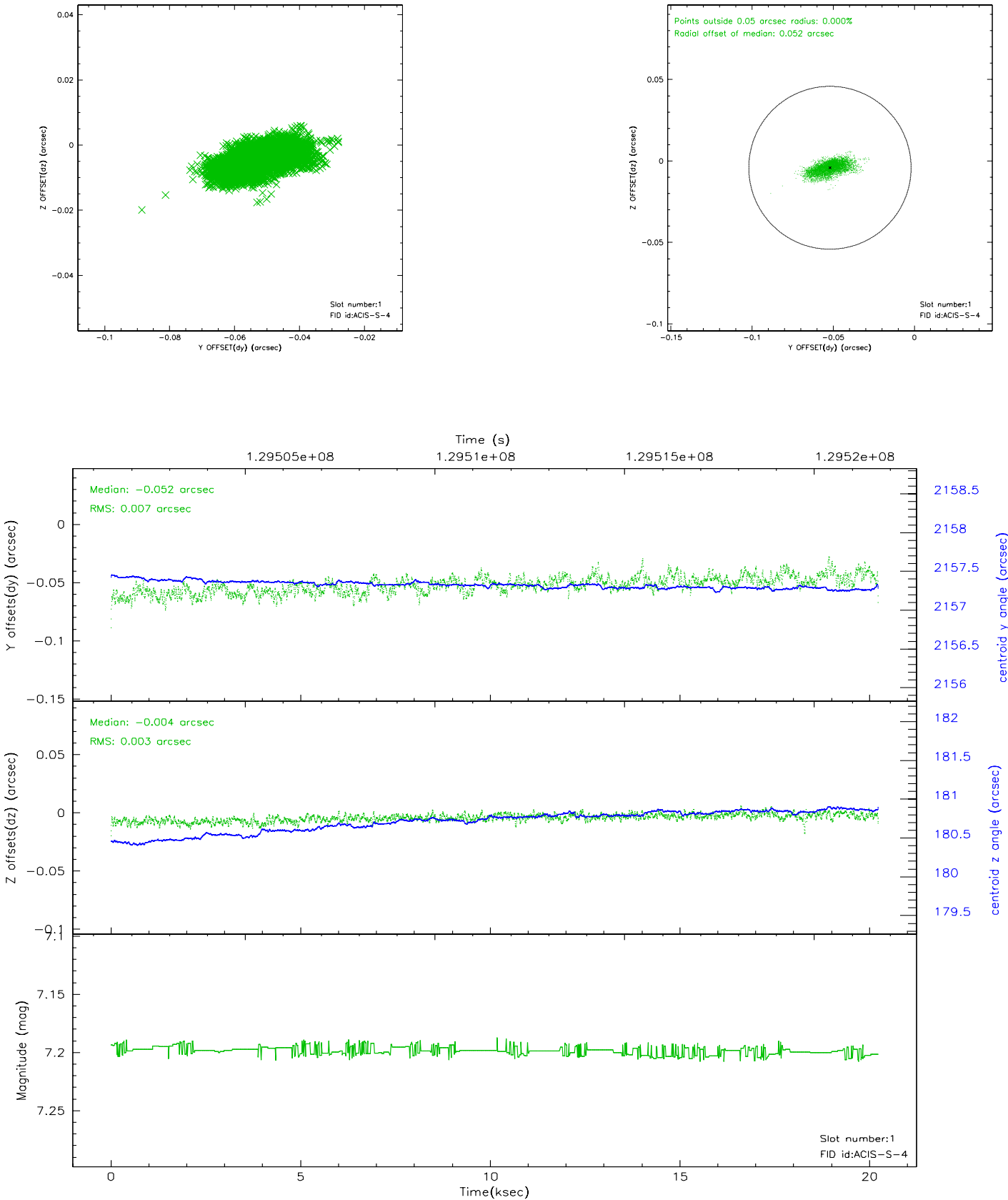


2.5 FID Slots

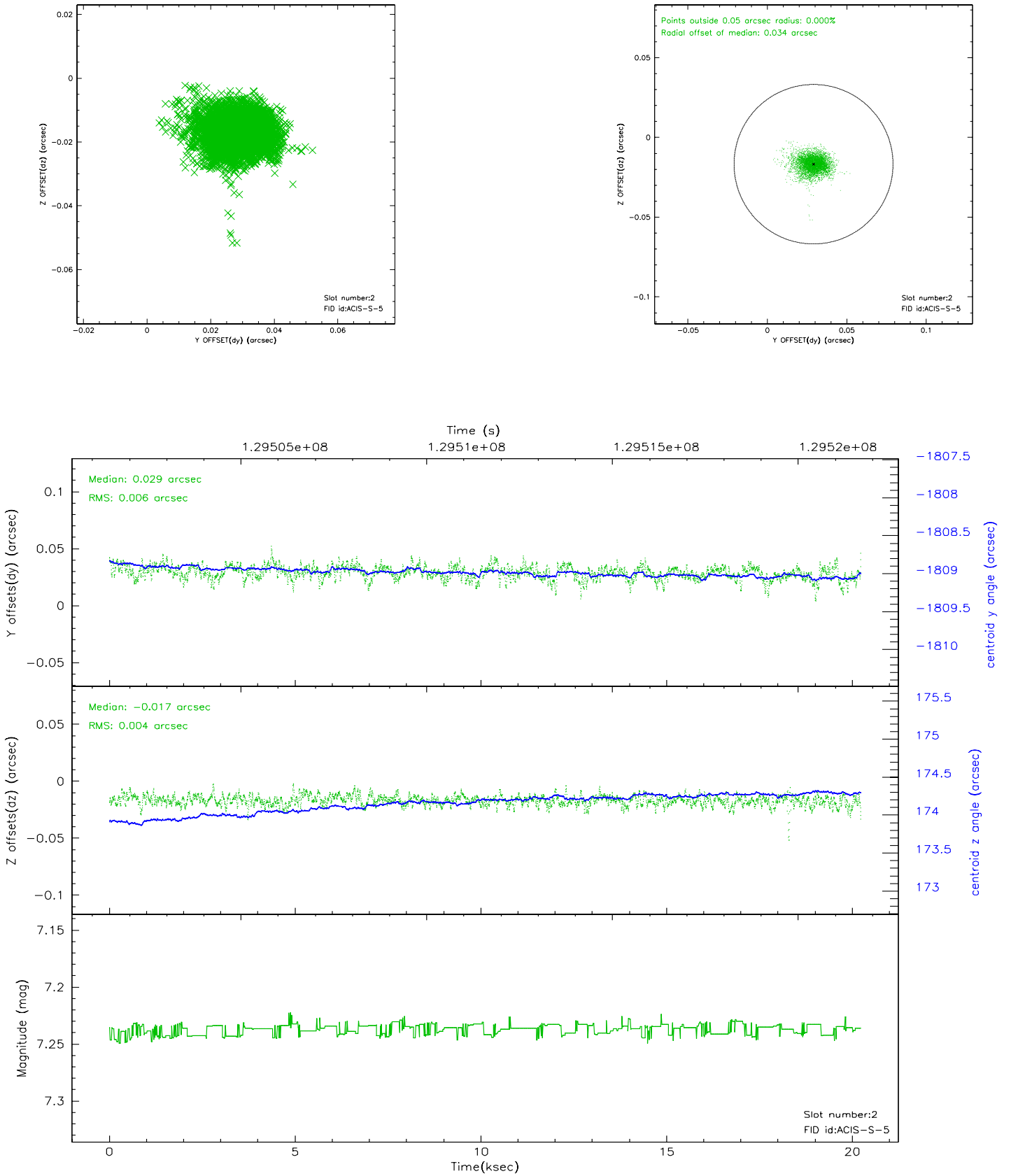
2.5.1 Slot 0



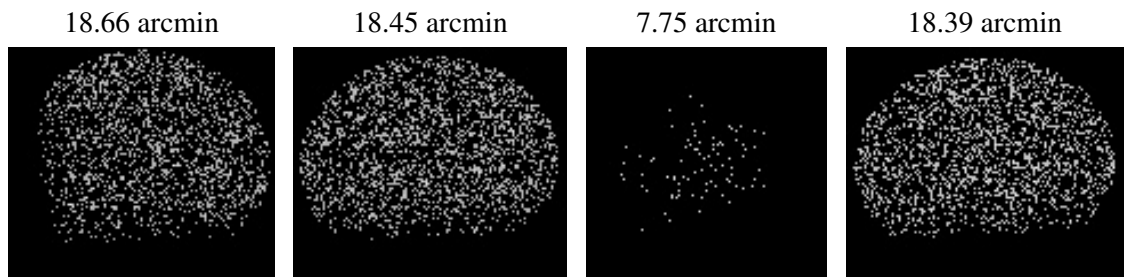
2.5.2 Slot 1



2.5.3 Slot 2



3 Point Sources



A Summary

A.1 Status

V&V Scientist	Jen Lauer
V&V Date (YYYY-MM-DD)	2006.08.31
V&V Edition	1
V&V Disposition and Status	OK
V&V Charge Time	19.763

A.2 Comments