

# V&V Reference Report

## L2 ASCDS Version : 7.6.9

Observation 2546 - L2 Version 001  
Chandra X-Ray Center

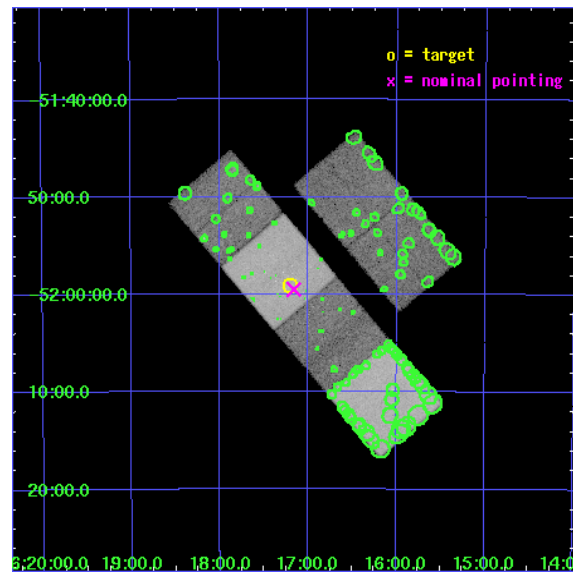
L2 Processing Date : Oct 7 2006

## Contents

<b>1</b>	<b>Front</b>	<b>2</b>
<b>2</b>	<b>OBI</b>	<b>3</b>
2.1	OBI . . . . .	3
2.1.1	Images . . . . .	3
2.1.2	Bias . . . . .	3
2.1.3	Parameters . . . . .	4
2.1.4	Events . . . . .	4
2.2	Compared Parameters . . . . .	5
2.3	Aspect . . . . .	6
2.4	Star Slots . . . . .	9
2.4.1	Slot 3 . . . . .	9
2.4.2	Slot 4 . . . . .	10
2.4.3	Slot 5 . . . . .	11
2.4.4	Slot 6 . . . . .	12
2.4.5	Slot 7 . . . . .	13
2.5	FID Slots . . . . .	14
2.5.1	Slot 0 . . . . .	14
2.5.2	Slot 1 . . . . .	15
2.5.3	Slot 2 . . . . .	16
<b>3</b>	<b>Point Sources</b>	<b>17</b>
<b>A</b>	<b>Summary</b>	<b>18</b>
A.1	Status . . . . .	18
A.2	Comments . . . . .	18

# 1 Front

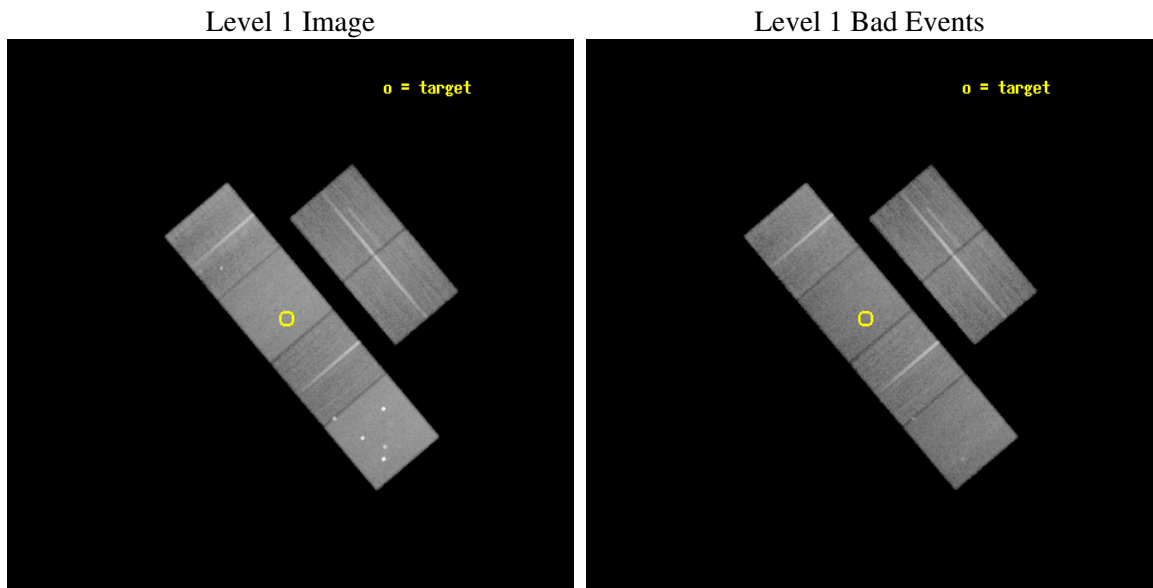
seq_num	200154
obs_id	2546
title	UNDERSTANDING THE ENGINE OF GROWTH IN PLANETARY NEBULAE
observer	Prof. Joel Kastner
object	MZ 3
dtcycle	0
cycle	P
ra_targ	244.3025
dec_targ	-51.985556
ra_nom	244.29041260409
dec_nom	-51.991718620666
roll_nom	229.75400824485
revision	2
ontime	41359.999845922
livetime	40836.274623871
ontime2	41353.517925382
ontime3	41359.999845922
ontime5	41359.999845922
ontime6	41359.999845922
ontime7	41359.999845922
ontime8	41356.75885576
l2events	425627



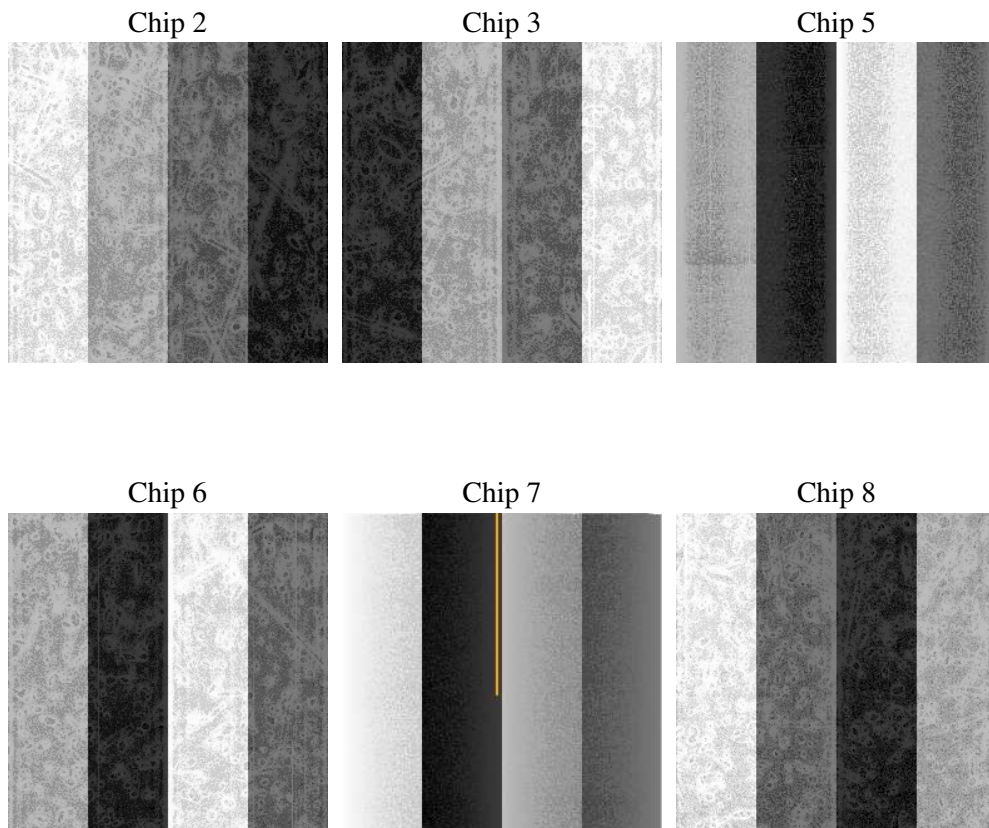
## 2 OBI

### 2.1 OBI

#### 2.1.1 Images



#### 2.1.2 Bias



### 2.1.3 Parameters

obi_num	0
ascdsver	7.6.9
caldbver	3.2.3
date	2006-10-07T14:37:24
revision	2

sched_exp_time	41400.000000
ontime	41364.870068043
ontime2	41358.388147503
ontime3	41364.870068043
ontime5	41364.870068043
ontime6	41364.870068043
ontime7	41364.870068043
ontime8	41361.629077882
l1events	1849384

### 2.1.4 Events

	ccd 2	ccd 3	ccd 5	ccd 6	ccd 7	ccd 8
level 1 events	264758	251139	393239	264255	348623	327370
rejected events	228920	217856	207121	227602	208367	252776
rejected %	86%	86%	52%	86%	59%	77%

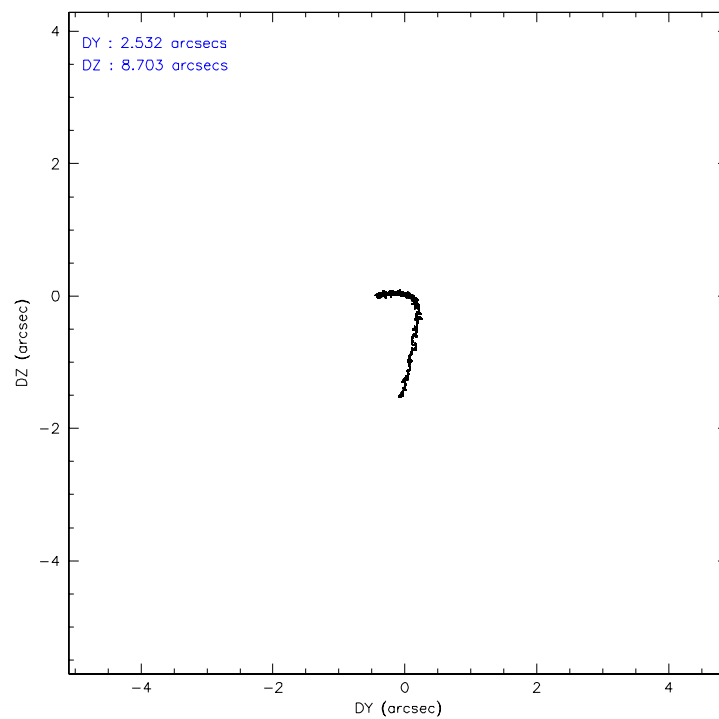
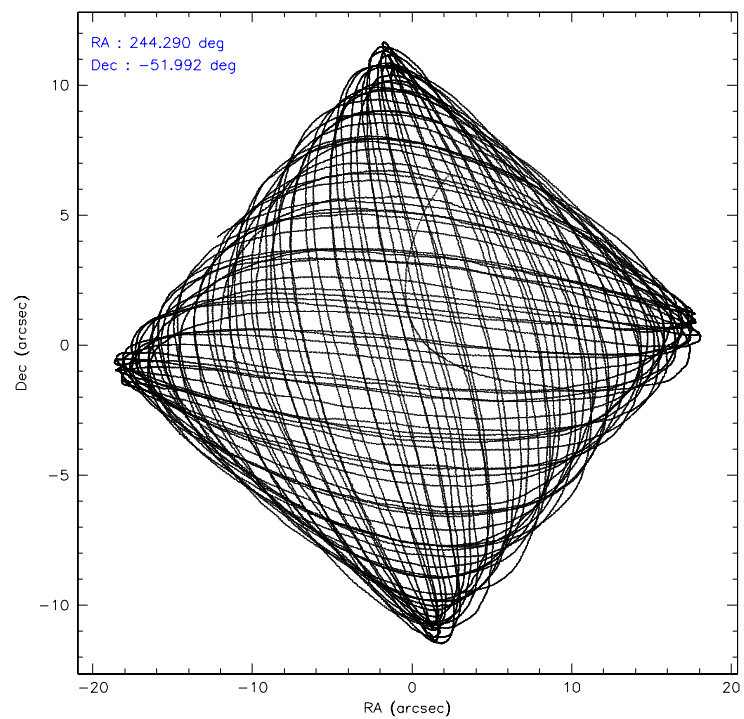
	ccd 2	ccd 3	ccd 5	ccd 6	ccd 7	ccd 8
grade 0 events	18059	16211	28332	17468	11162	28188
	6%	6%	7%	6%	3%	8%
grade 1 events	166	150	820	151	194	231
	0%	0%	0%	0%	0%	0%
grade 2 events	6603	5842	55926	6799	34926	14931
	2%	2%	14%	2%	10%	4%
grade 3 events	3057	3041	4356	3108	8139	7393
	1%	1%	1%	1%	2%	2%
grade 4 events	3101	3023	4110	3059	7858	6894
	1%	1%	1%	1%	2%	2%
grade 5 events	9765	10776	17919	11421	22593	14691
	3%	4%	4%	4%	6%	4%
grade 6 events	5019	5168	93409	6220	78190	17189
	1%	2%	23%	2%	22%	5%
grade 7 events	218988	206928	188367	216029	185561	237853
	82%	82%	47%	81%	53%	72%

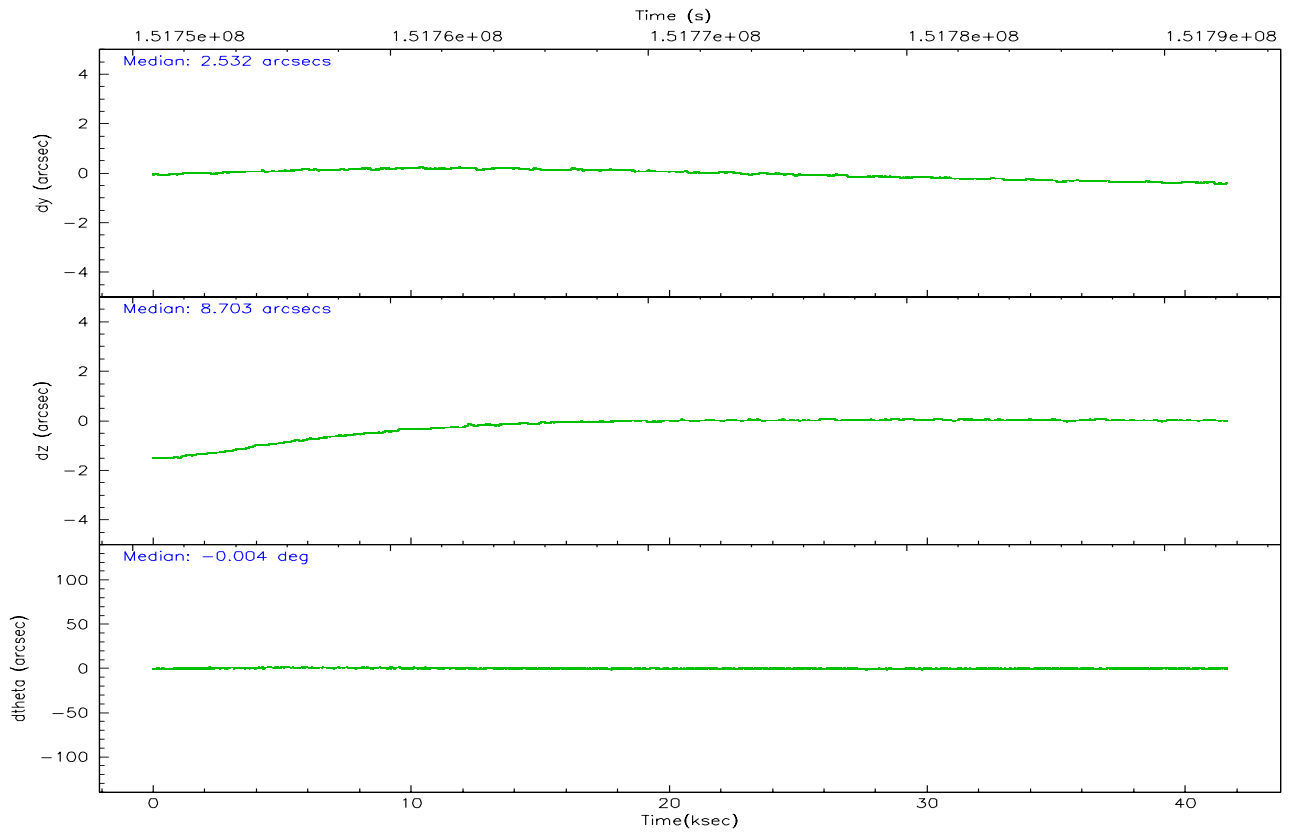
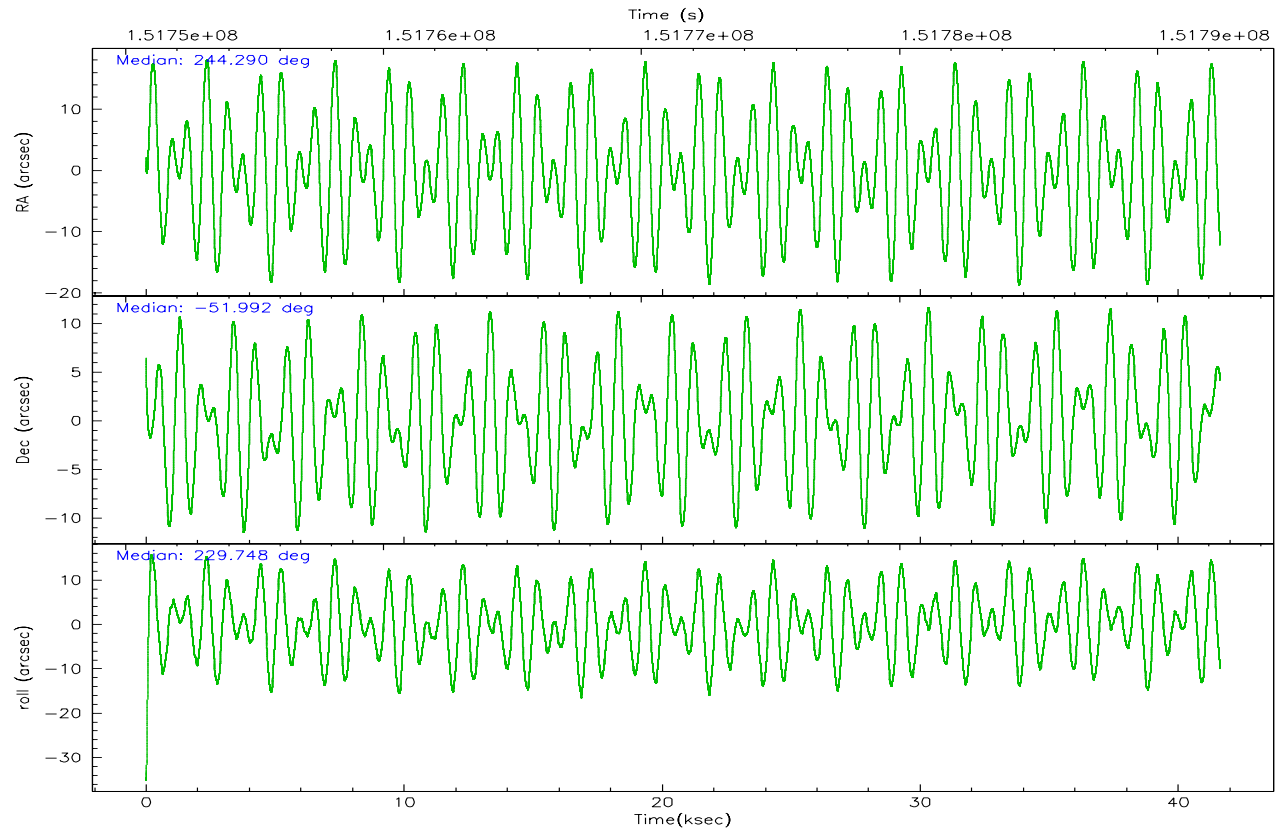


## 2.2 Compared Parameters

Parameter	Planned	Actual	Parameter	Planned	Actual
Instrument	ACIS	ACIS	Obspar format version number	6	6
Detector	ACIS-235678	ACIS-235678	Obspar file type	PREDICTED	ACTUAL
Grating	NONE	NONE	Obspar update status	NONE	UPDATED
Data mode	FAINT	FAINT	Number of optional ACIS chips dropped	0	0
Observation mode	POINTING	POINTING	On-chip summing requested	N	N
Pointing RA	244.297681	244.2904126040861	Subarray requested	NONE	NONE
Pointing Dec	-51.964868	-51.99171862066633	Alternating exposures requested	N	N
Pointing Roll	229.603123	229.754008244855	Primary exposure time	0.000000	3.2
SIM focus pos (mm)	-0.684267	-0.6828225247311905			
SIM defocus (mm)	0	0.001444936568705701			
SIM translation stage pos (mm)	-190.132523	-190.1400660498719			
SIM translation stage offset (mm)	0	0.00754346686406393			
Observation start time	151751026.184000	151750040.92912			
Observation start date	2002-10-23T09:02:42	2002-10-23T08:47:20			
Observation end time	151792426.184000	151792990.9934			
Observation end date	2002-10-23T20:32:42	2002-10-23T20:43:10			
Read mode	TIMED	TIMED			

## 2.3 Aspect



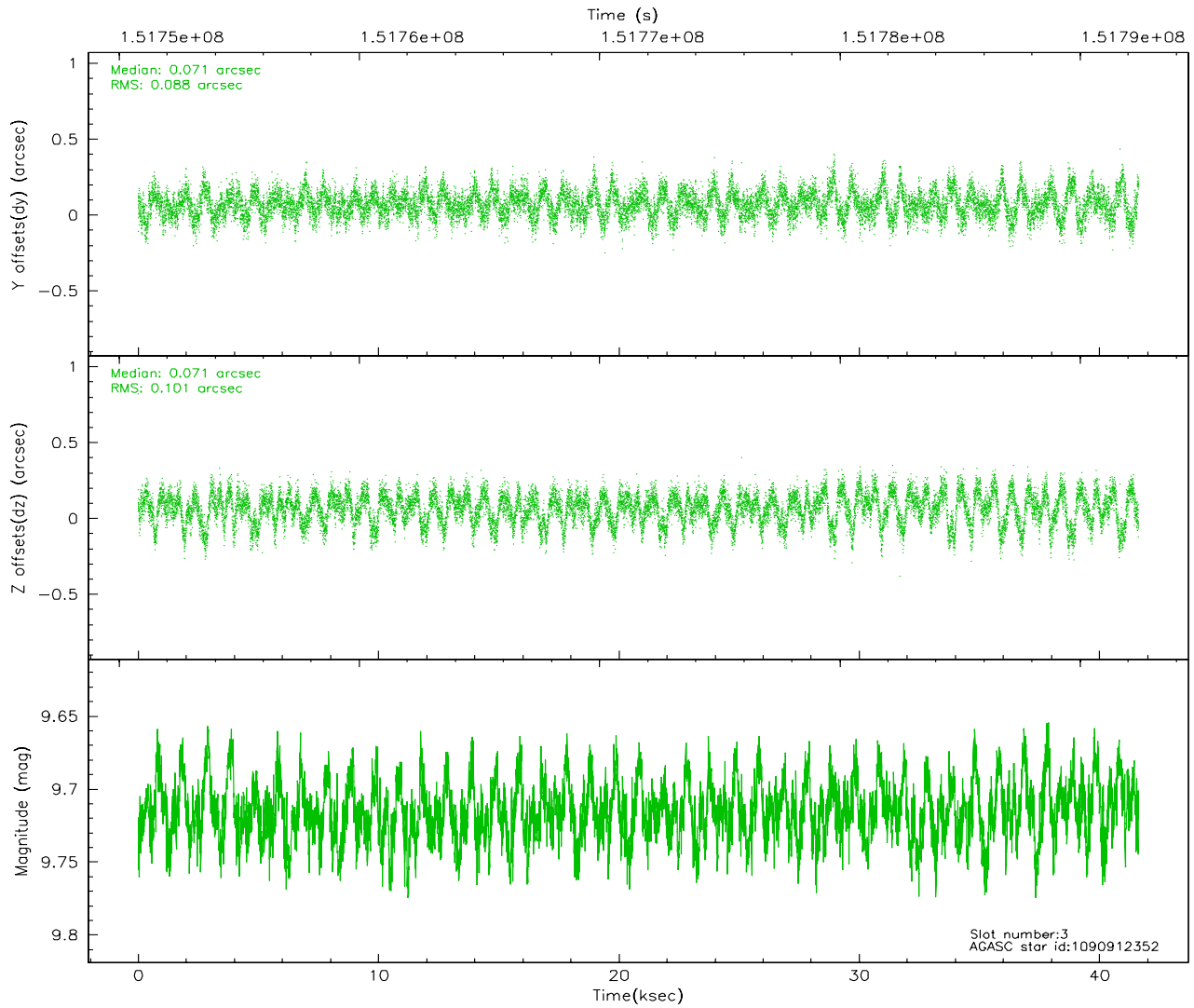
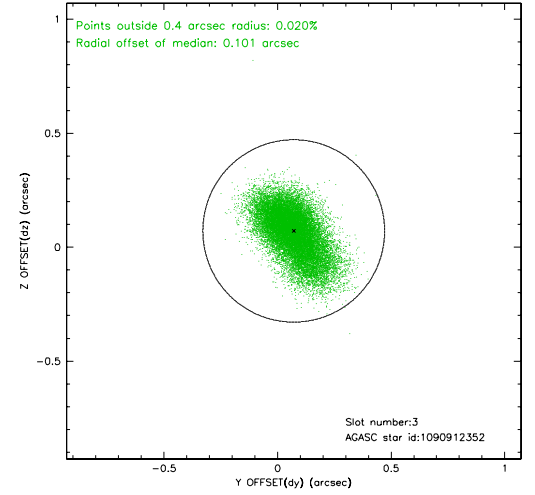
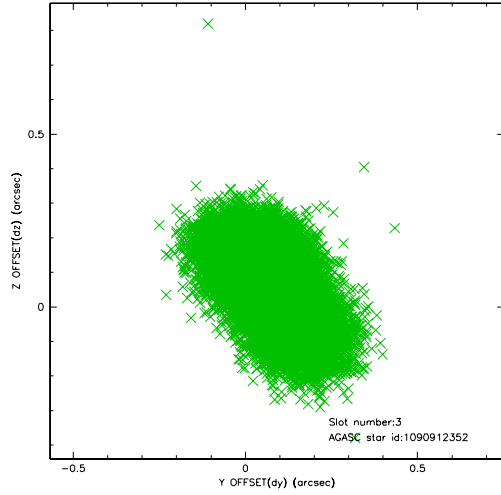


### Slot Statistics

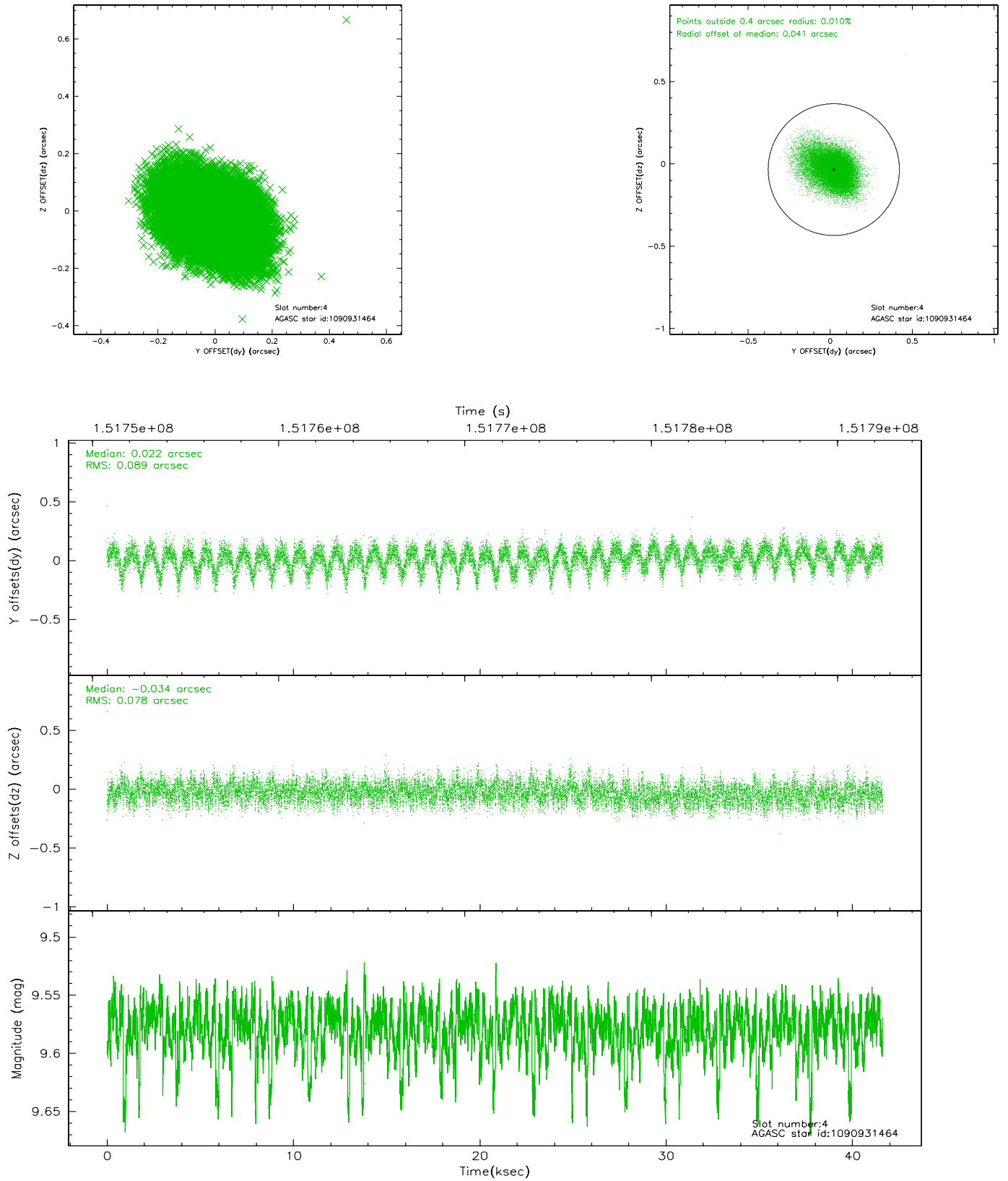
slot	status	id	mag	n_pts	med_dy	med_dz	dr1	dr2	ra	dec	mean_y	mean_z
0	FID	ACIS-S-2	7.10	10154	-0.006	0.016	0.016	0.025	0.000000	0.000000	-755.13	-1729.66
1	FID	ACIS-S-4	7.20	10153	-0.061	-0.002	0.017	0.029	0.000000	0.000000	2158.10	178.79
2	FID	ACIS-S-5	7.24	10151	0.033	-0.006	0.009	0.015	0.000000	0.000000	-1807.91	172.48
3	GUIDE	1090912352	9.71	20289	0.071	0.071	0.140	0.238	244.175605	-52.468334	1553.17	970.93
4	GUIDE	1090931464	9.58	20233	0.022	-0.034	0.123	0.208	243.225969	-52.153895	2065.07	-1350.38
5	GUIDE	1090931608	9.33	20296	0.138	-0.142	0.129	0.200	243.085233	-52.161901	2291.98	-1565.10
6	GUIDE	1091058680	7.99	20307	-0.080	-0.043	0.057	0.093	245.262994	-51.916364	-1512.25	1528.00
7	GUIDE	1091053672	9.67	20299	-0.139	0.149	0.125	0.214	245.623467	-51.852552	-2199.30	2000.34

## 2.4 Star Slots

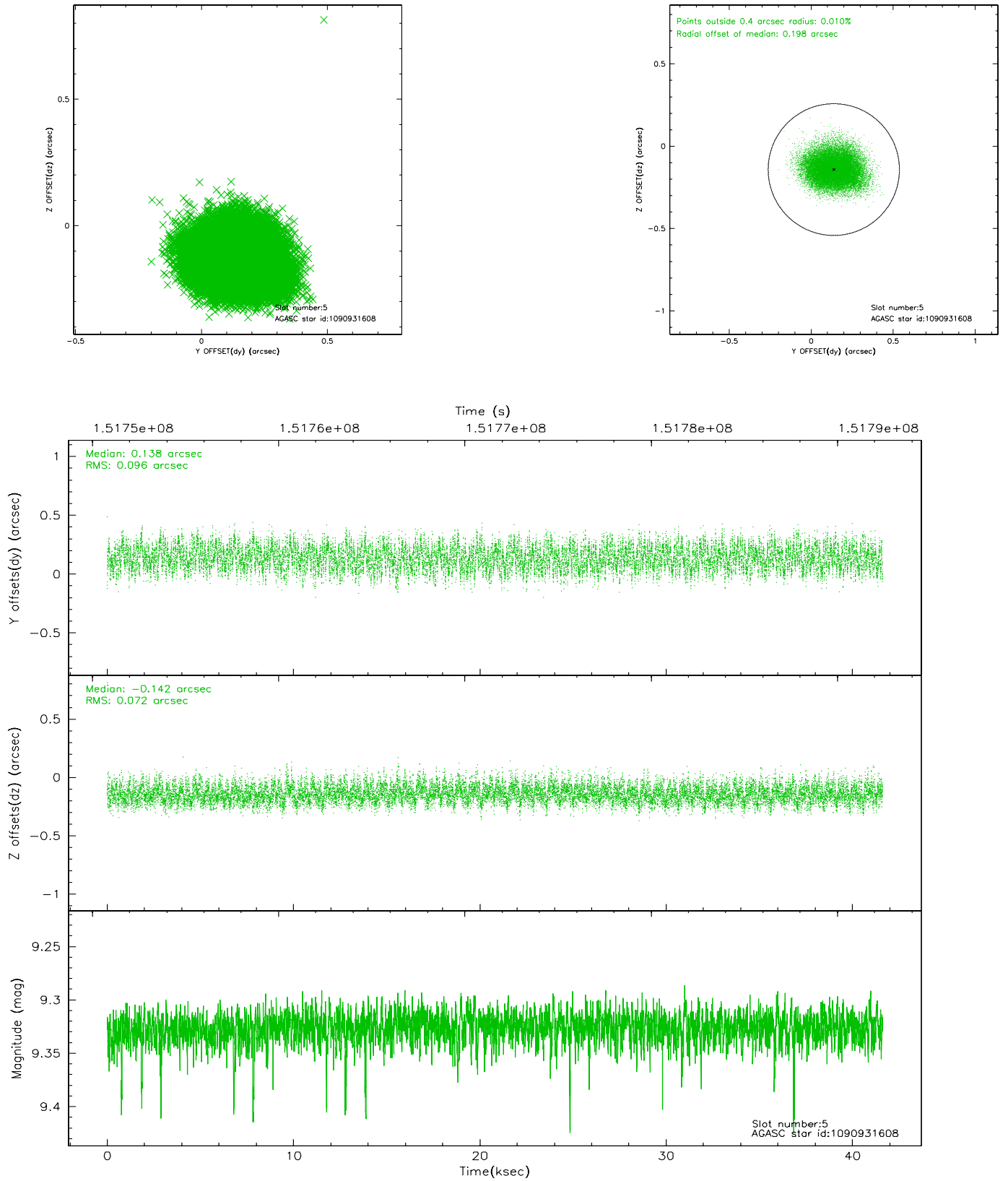
### 2.4.1 Slot 3



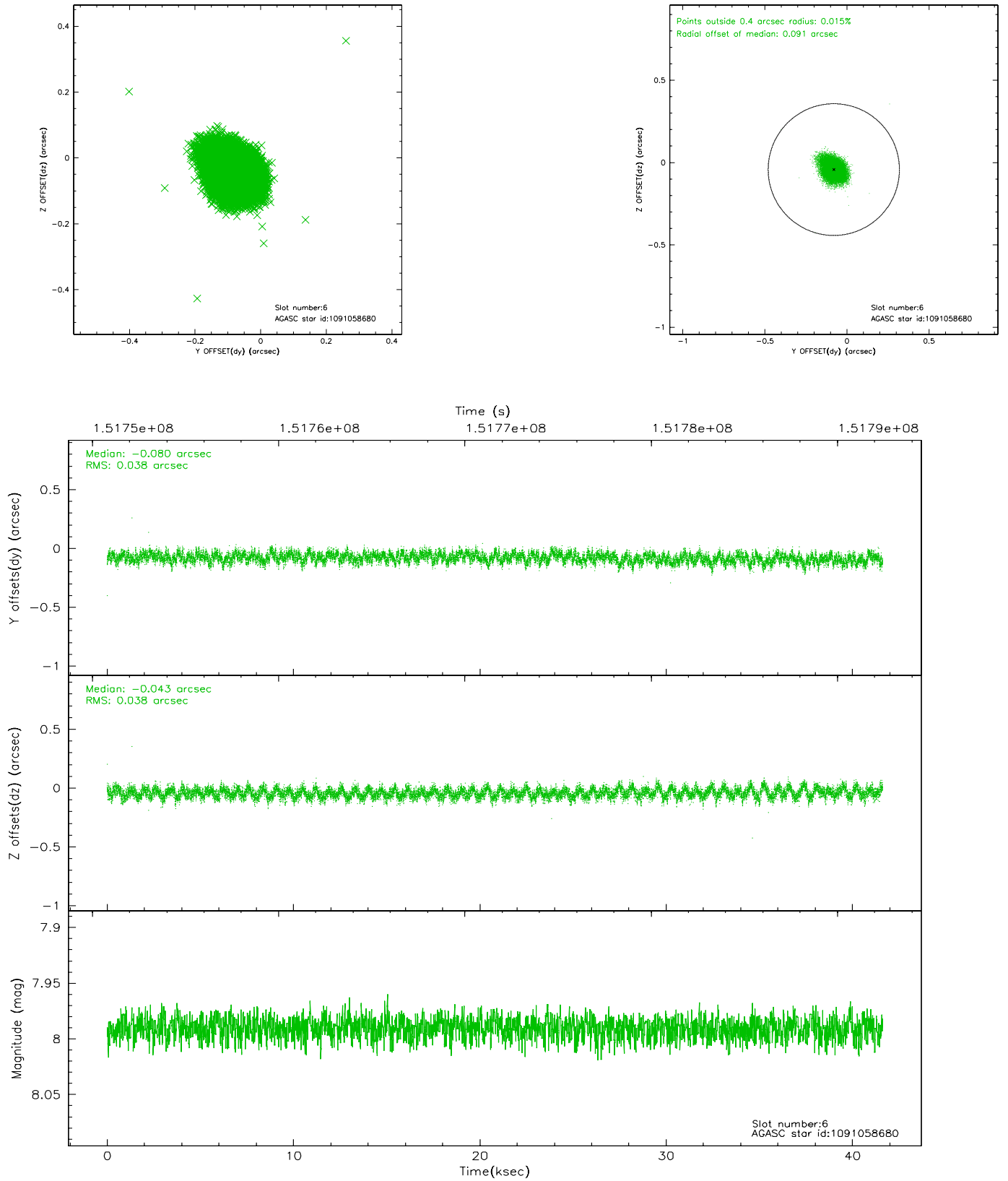
## 2.4.2 Slot 4



### 2.4.3 Slot 5

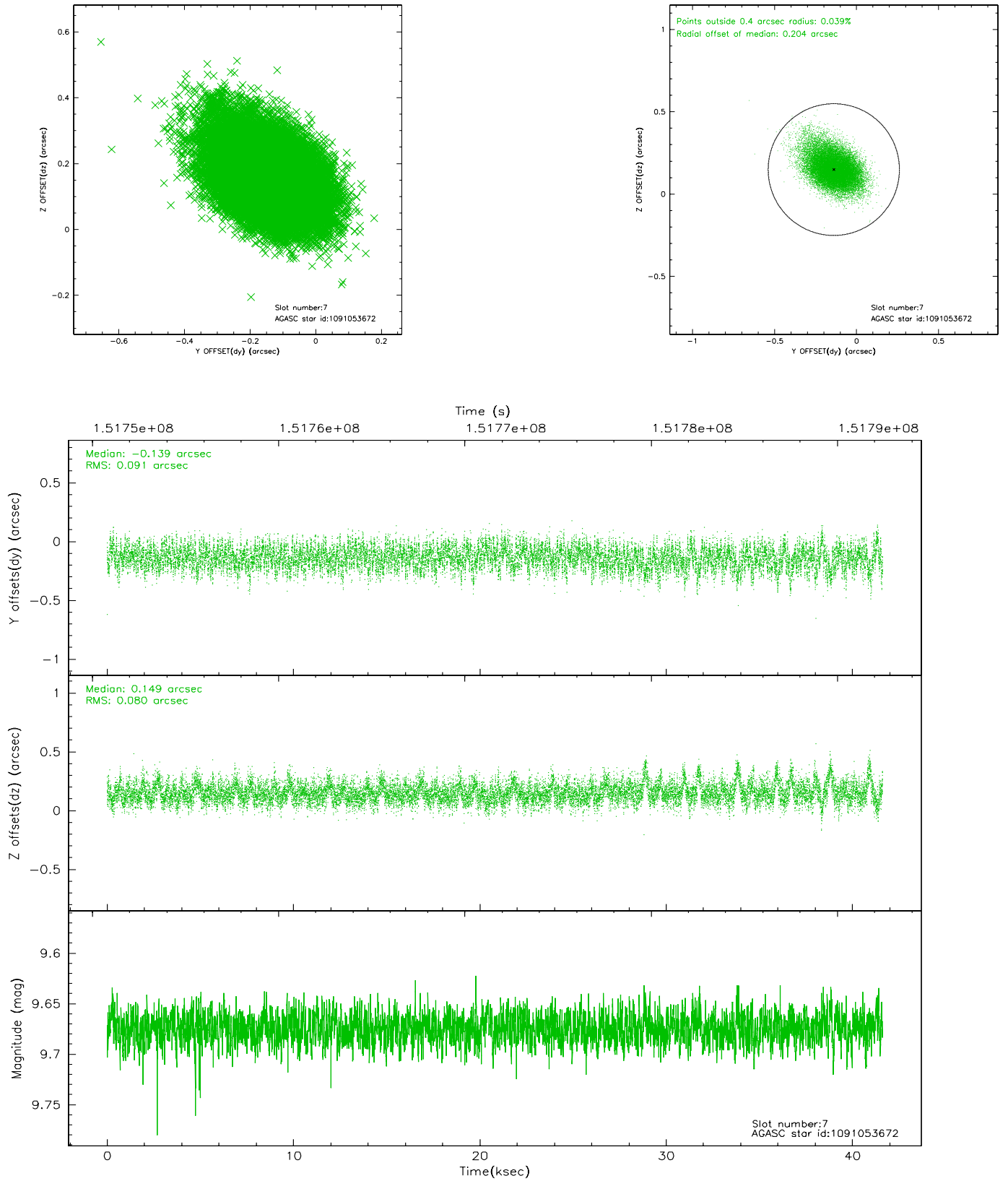


## 2.4.4 Slot 6



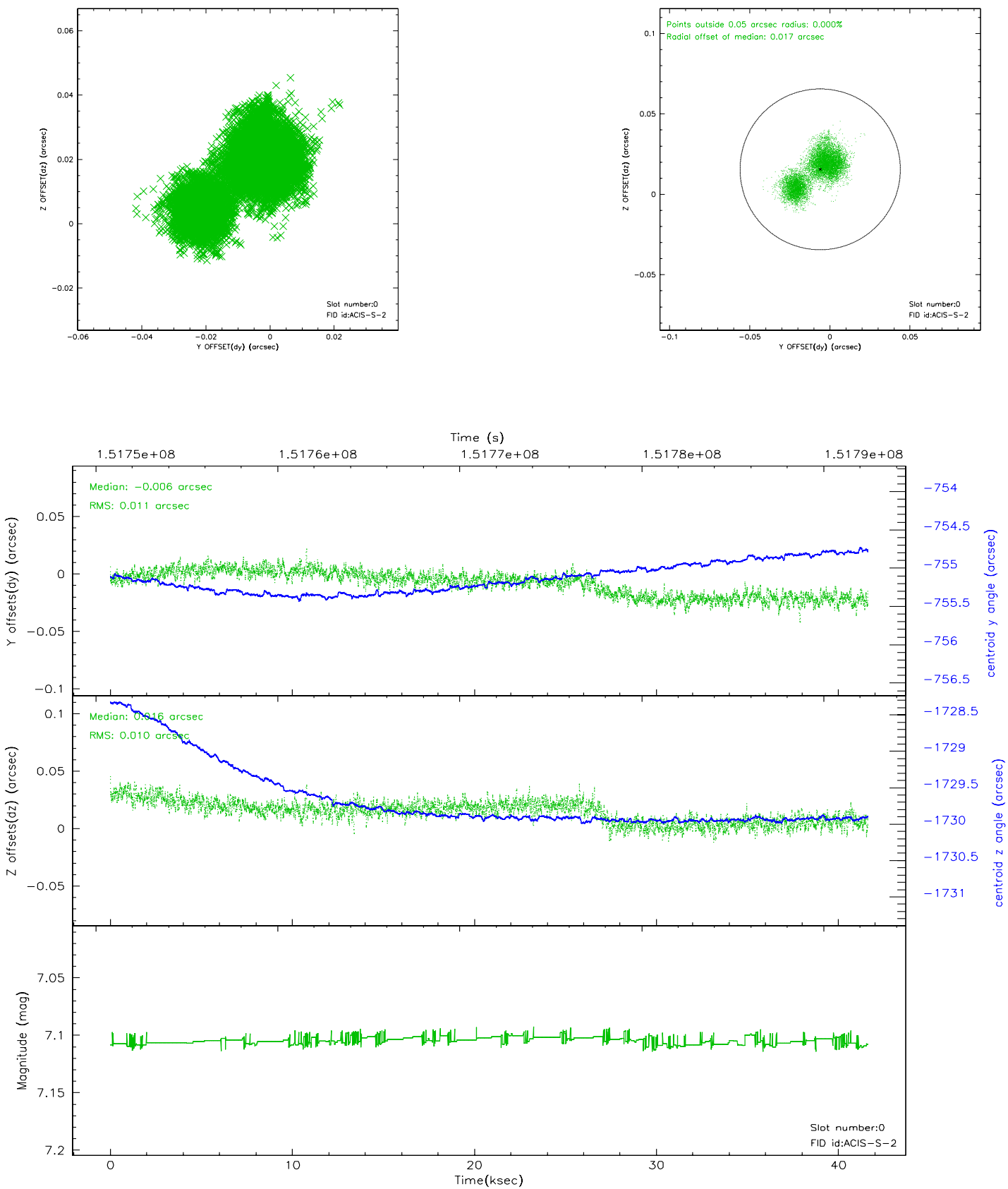


## 2.4.5 Slot 7

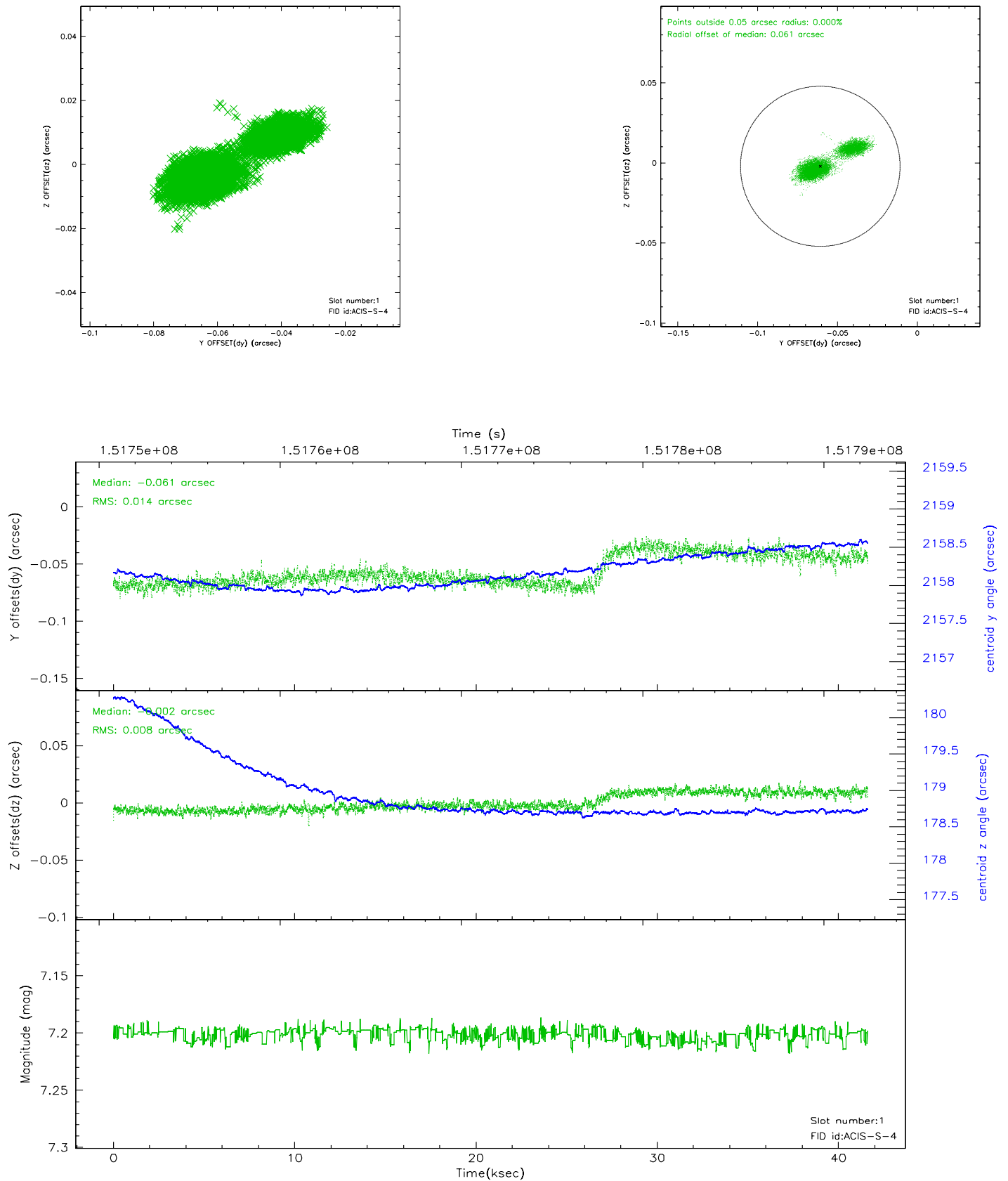


## 2.5 FID Slots

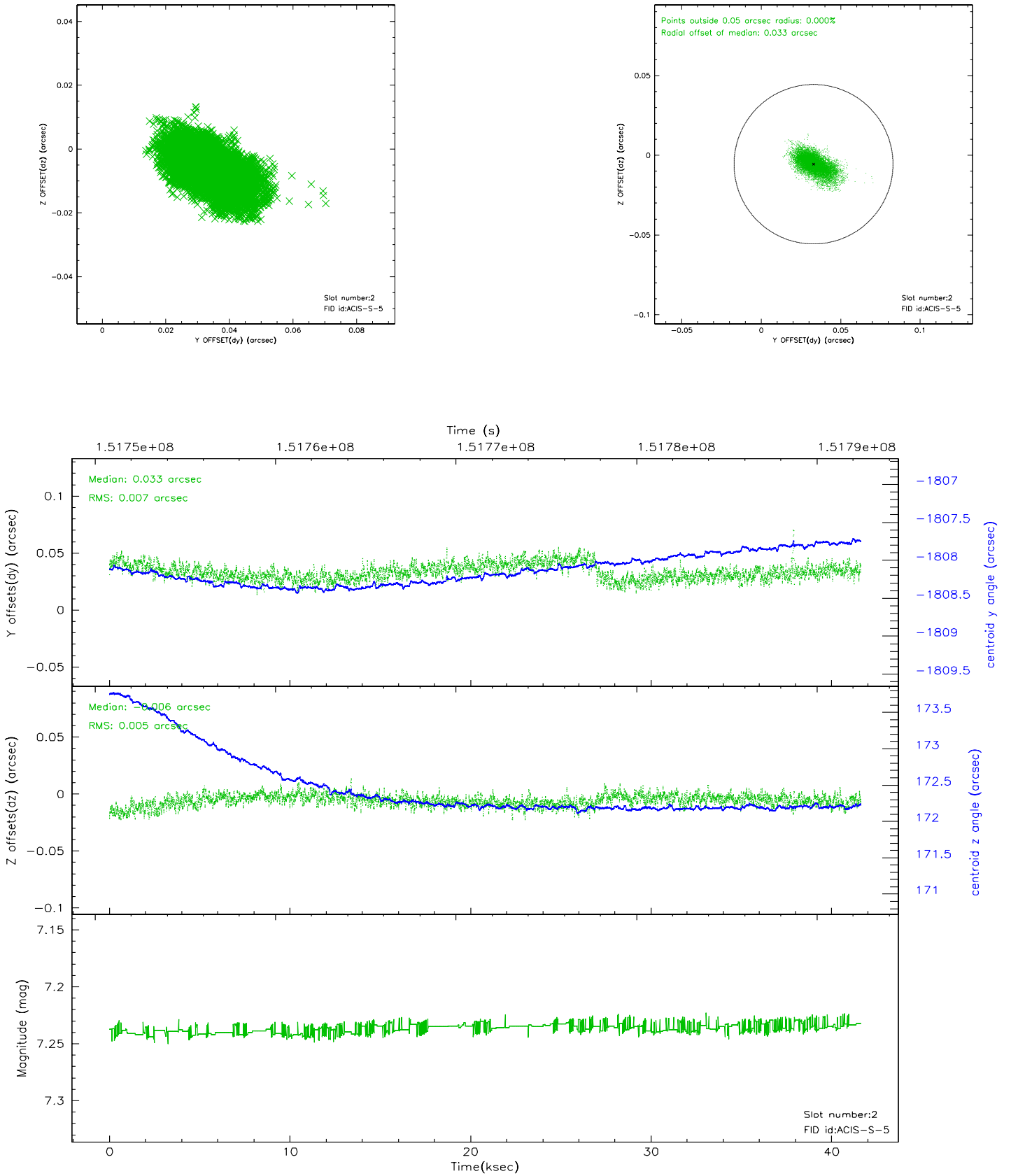
### 2.5.1 Slot 0



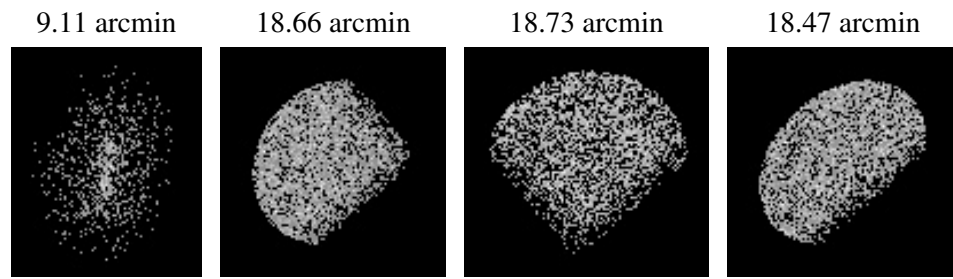
## 2.5.2 Slot 1



### 2.5.3 Slot 2



### 3 Point Sources



## A Summary

### A.1 Status

V&V Scientist	Jen Lauer
V&V Date (YYYY-MM-DD)	2006.10.08
V&V Edition	1
V&V Disposition and Status	OK
V&V Charge Time	41.356

### A.2 Comments