

V&V Reference Report

L2 ASCDS Version : 7.6.9

Observation 2536 - L2 Version 001
Chandra X-Ray Center

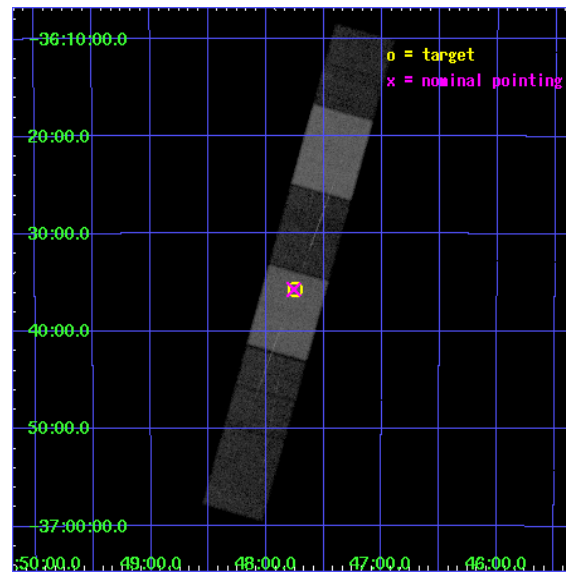
L2 Processing Date : Sep 14 2006

Contents

1	Front	2
2	OBI	3
2.1	OBI	3
2.1.1	Images	3
2.1.2	Bias	3
2.1.3	Parameters	4
2.1.4	Events	4
2.2	Compared Parameters	5
2.3	Aspect	6
2.4	Star Slots	9
2.4.1	Slot 3	9
2.4.2	Slot 4	10
2.4.3	Slot 5	11
2.4.4	Slot 6	12
2.4.5	Slot 7	13
2.5	FID Slots	14
2.5.1	Slot 0	14
2.5.2	Slot 1	15
2.5.3	Slot 2	16
3	Gratings	17
3.1	HEG Arm	17
3.2	MEG Arm	19
A	Summary	21
A.1	Status	21
A.2	Comments	21

1 Front

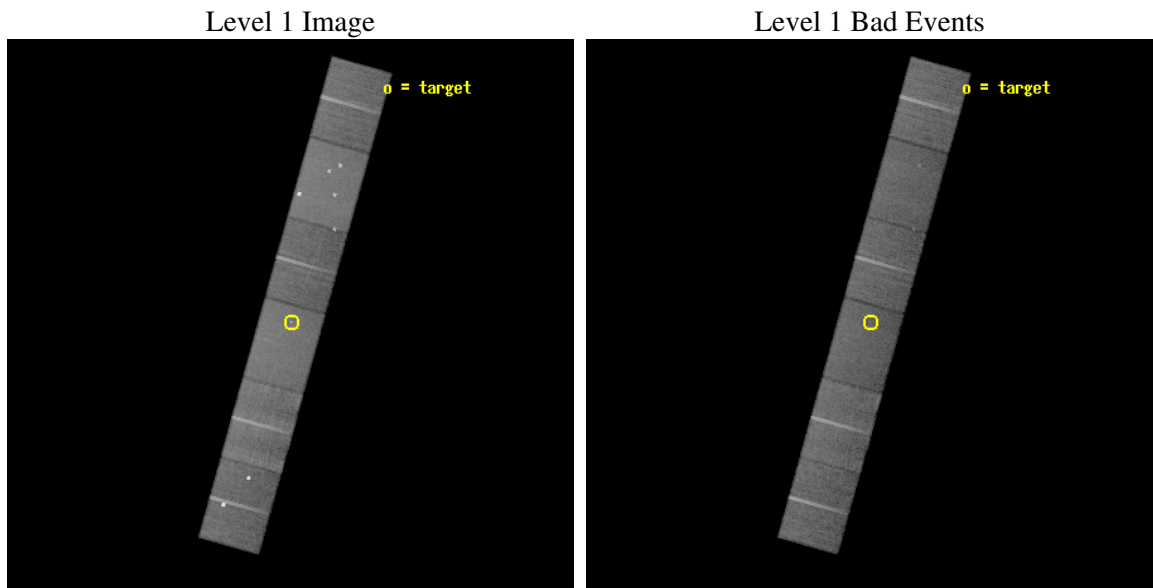
seq_num	200144
obs_id	2536
title	HIGH-RESOLUTION SPECTRA OF T TAURI STARS
observer	Dr. Stephen Murray
object	SPEEDY MIC
dtcycle	0
cycle	P
ra_targ	311.9375
dec_targ	-36.594667
ra_nom	311.93999734751
dec_nom	-36.595618175043
roll_nom	105.65811291238
revision	2
ontime	34960.0
liveltime	34395.365677045
ontime4	34960.0
ontime5	34960.0
ontime6	34960.0
ontime7	34960.0
ontime8	34957.458989888
ontime9	34960.0
l2events	258101



2 OBI

2.1 OBI

2.1.1 Images

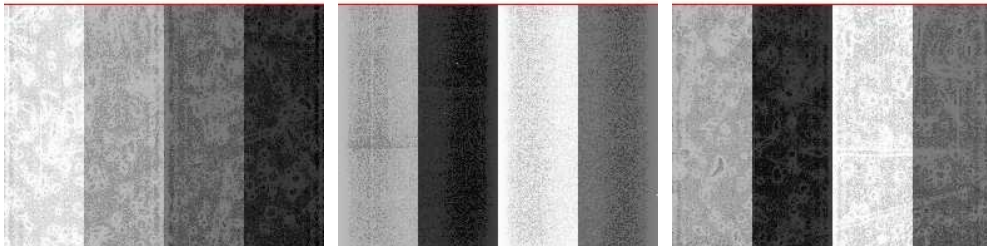


2.1.2 Bias

Chip 4

Chip 5

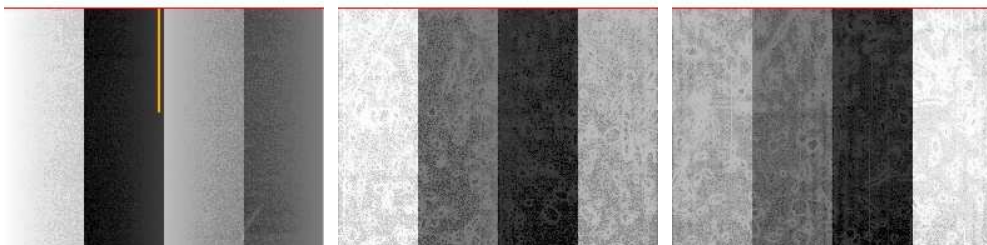
Chip 6



Chip 7

Chip 8

Chip 9



2.1.3 Parameters

obi_num	1
ascdsver	7.6.9
caldsver	3.2.3
date	2006-09-14T19:20:43
revision	2

sched_exp_time	35000.000000
ontime	34964.282414794
ontime4	34964.282414794
ontime5	34964.282414794
ontime6	34964.282414794
ontime7	34964.282414794
ontime8	34961.741404682
ontime9	34964.282414794
l1events	1221797

2.1.4 Events

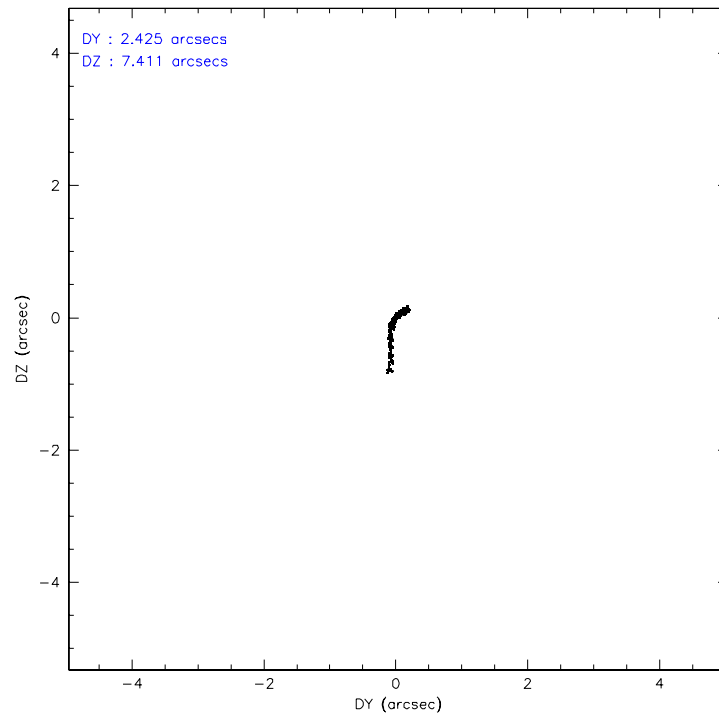
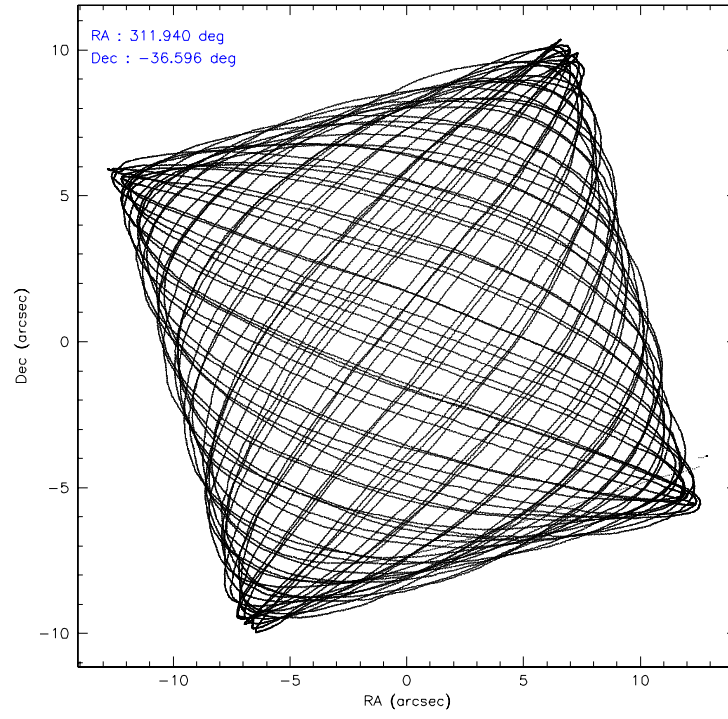
	ccd 4	ccd 5	ccd 6	ccd 7	ccd 8	ccd 9
level 1 events	186530	252222	168181	215489	217291	182084
rejected events	164636	131395	146634	128396	167717	142626
rejected %	88%	52%	87%	59%	77%	78%

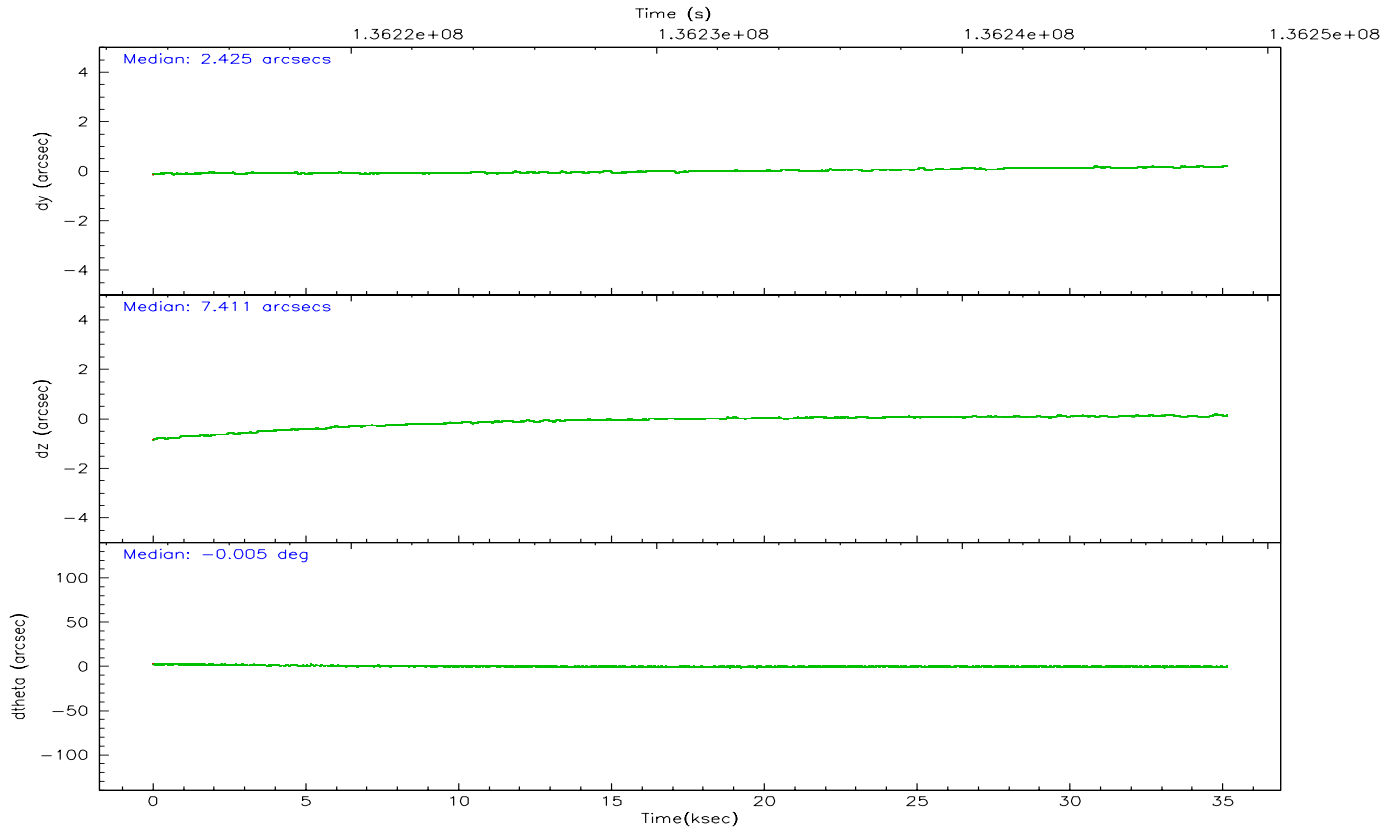
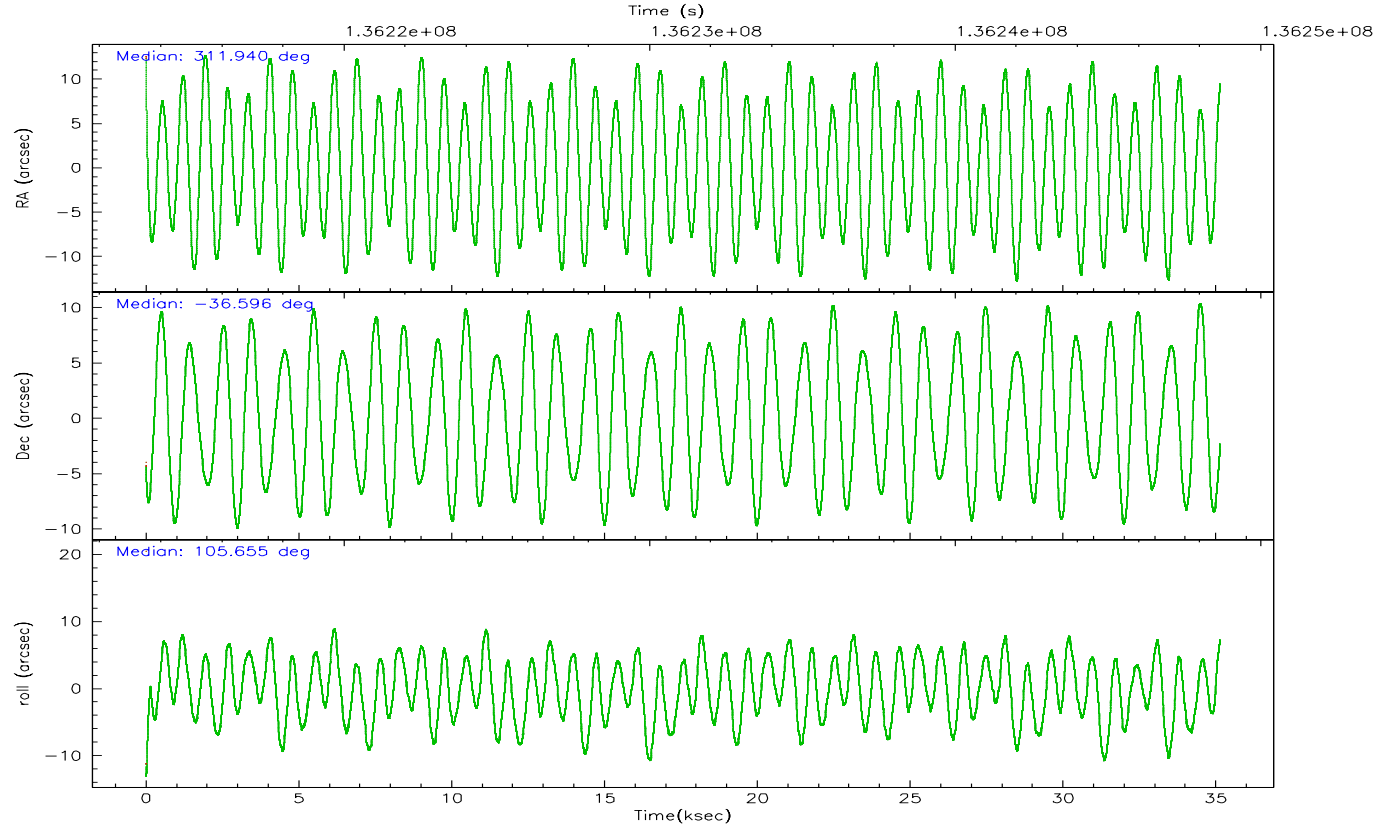
	ccd 4	ccd 5	ccd 6	ccd 7	ccd 8	ccd 9
grade 0 events	8879	24268	9097	5906	15513	13373
	4%	9%	5%	2%	7%	7%
grade 1 events	69	927	75	146	124	78
	0%	0%	0%	0%	0%	0%
grade 2 events	5143	31753	4253	20844	10462	17912
	2%	12%	2%	9%	4%	9%
grade 3 events	2108	2819	2127	5539	5376	2137
	1%	1%	1%	2%	2%	1%
grade 4 events	2031	2798	2174	5407	5025	2070
	1%	1%	1%	2%	2%	1%
grade 5 events	6046	11662	7067	15849	9032	7179
	3%	4%	4%	7%	4%	3%
grade 6 events	3739	59215	3899	49412	13202	3973
	2%	23%	2%	22%	6%	2%
grade 7 events	158515	118780	139489	112386	158557	135362
	84%	47%	82%	52%	72%	74%

2.2 Compared Parameters

Parameter	Planned	Actual	Parameter	Planned	Actual
Instrument	ACIS	ACIS	Obspar format version number	6	6
Detector	ACIS-456789	ACIS-456789	Obspar file type	PREDICTED	ACTUAL
Grating	HETG	HETG	Obspar update status	NONE	UPDATED
Data mode	FAINT	FAINT	Number of optional ACIS chips dropped	0	0
Observation mode	POINTING	POINTING	On-chip summing requested	N	N
Pointing RA	311.964572	311.9399973475092	Subarray requested	CUSTOM	CUSTOM
Pointing Dec	-36.614410	-36.59561817504289	Subarray start row	1	1
Pointing Roll	105.516141	105.6581129123845	Subarray row count	774	774
SIM focus pos (mm)	-0.684267	-0.6828225247311905	Alternating exposures requested	N	N
SIM defocus (mm)	0	0.001444936568705701	Primary exposure time	0.000000	2.5
SIM translation stage pos (mm)	-187.132523	-187.1228876879999			
SIM translation stage offset (mm)	-3	-3.009634895007935			
Observation start time	136213665.184000	136212676.19042			
Observation start date	2002-04-26T13:06:41	2002-04-26T12:51:16			
Observation end time	136248665.184000	136249298.41692			
Observation end date	2002-04-26T22:50:01	2002-04-26T23:01:38			
Read mode	TIMED	TIMED			

2.3 Aspect



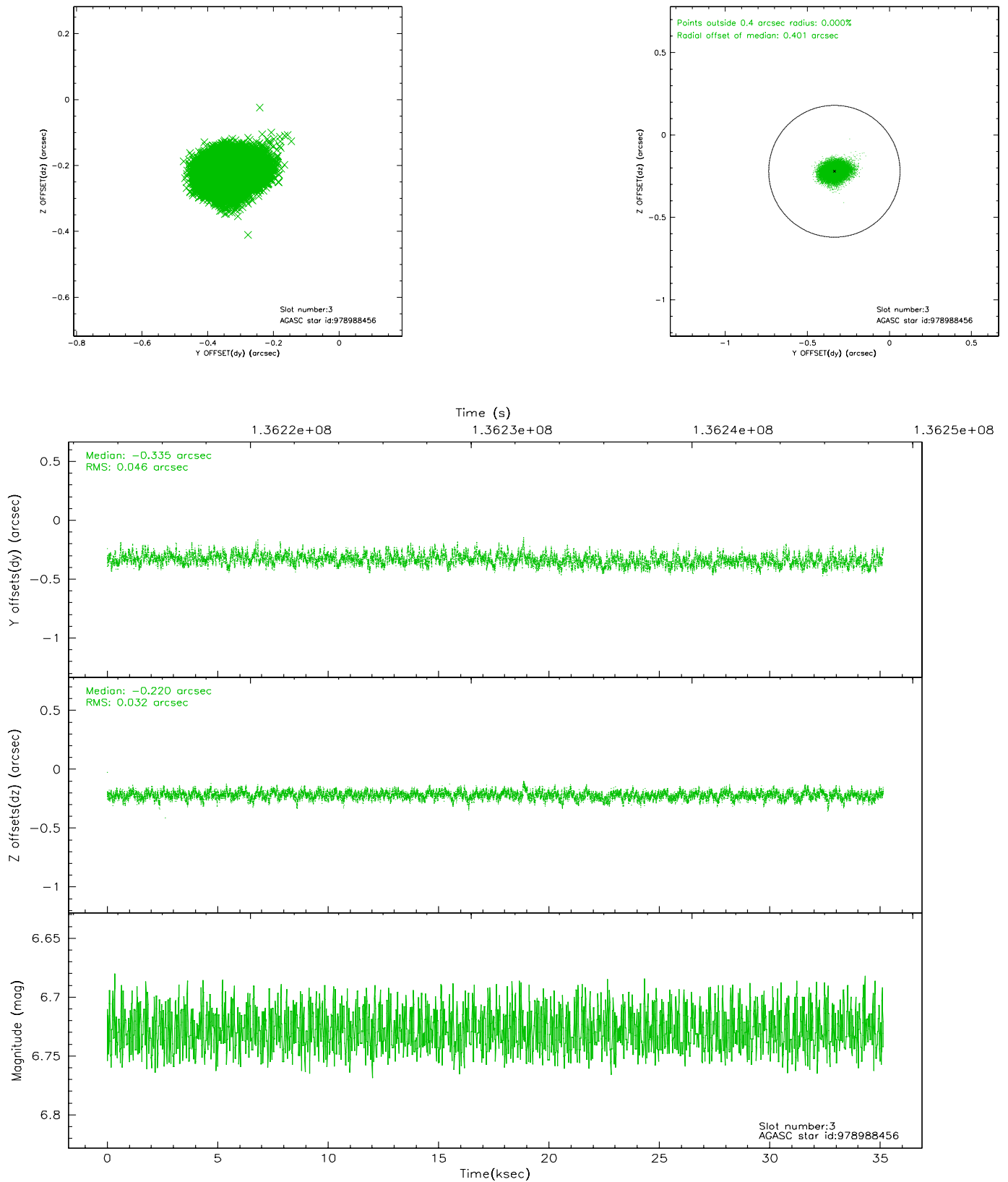


Slot Statistics

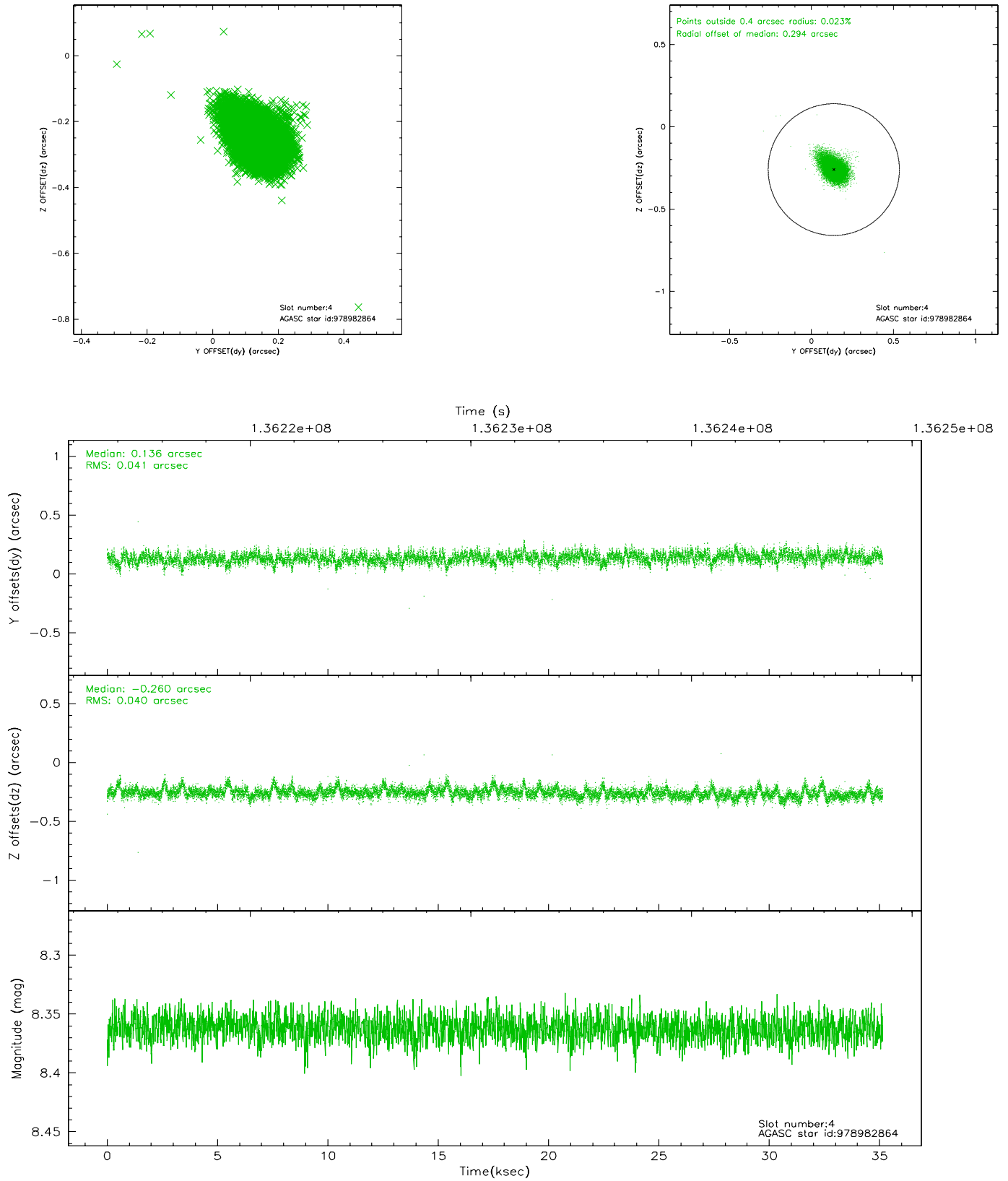
slot	status	id	mag	n_pts	med_dy	med_dz	dr1	dr2	ra	dec	mean_y	mean_z
0	FID	ACIS-S-2	7.10	8572	-0.042	-0.022	0.017	0.023	0.000000	0.000000	-754.87	-1790.65
1	FID	ACIS-S-4	7.20	8571	-0.025	0.027	0.018	0.026	0.000000	0.000000	2158.37	117.87
2	FID	ACIS-S-5	7.23	8572	0.038	0.002	0.016	0.023	0.000000	0.000000	-1807.61	111.50
3	GUIDE	978988456	6.73	17143	-0.335	-0.220	0.059	0.096	311.577530	-36.120150	2014.23	609.56
4	GUIDE	978982864	8.36	17140	0.136	-0.260	0.058	0.103	311.499492	-37.036400	-1107.97	1695.34
5	GUIDE	979119192	9.71	17066	0.181	0.308	0.149	0.251	312.824643	-36.828650	-1415.44	-2177.89
6	GUIDE	979116520	9.31	17136	0.265	0.235	0.075	0.121	312.776878	-37.062628	-2187.04	-1813.77
7	GUIDE	978984352	9.69	17059	-0.248	-0.061	0.123	0.199	311.180988	-36.095435	2401.90	1699.56

2.4 Star Slots

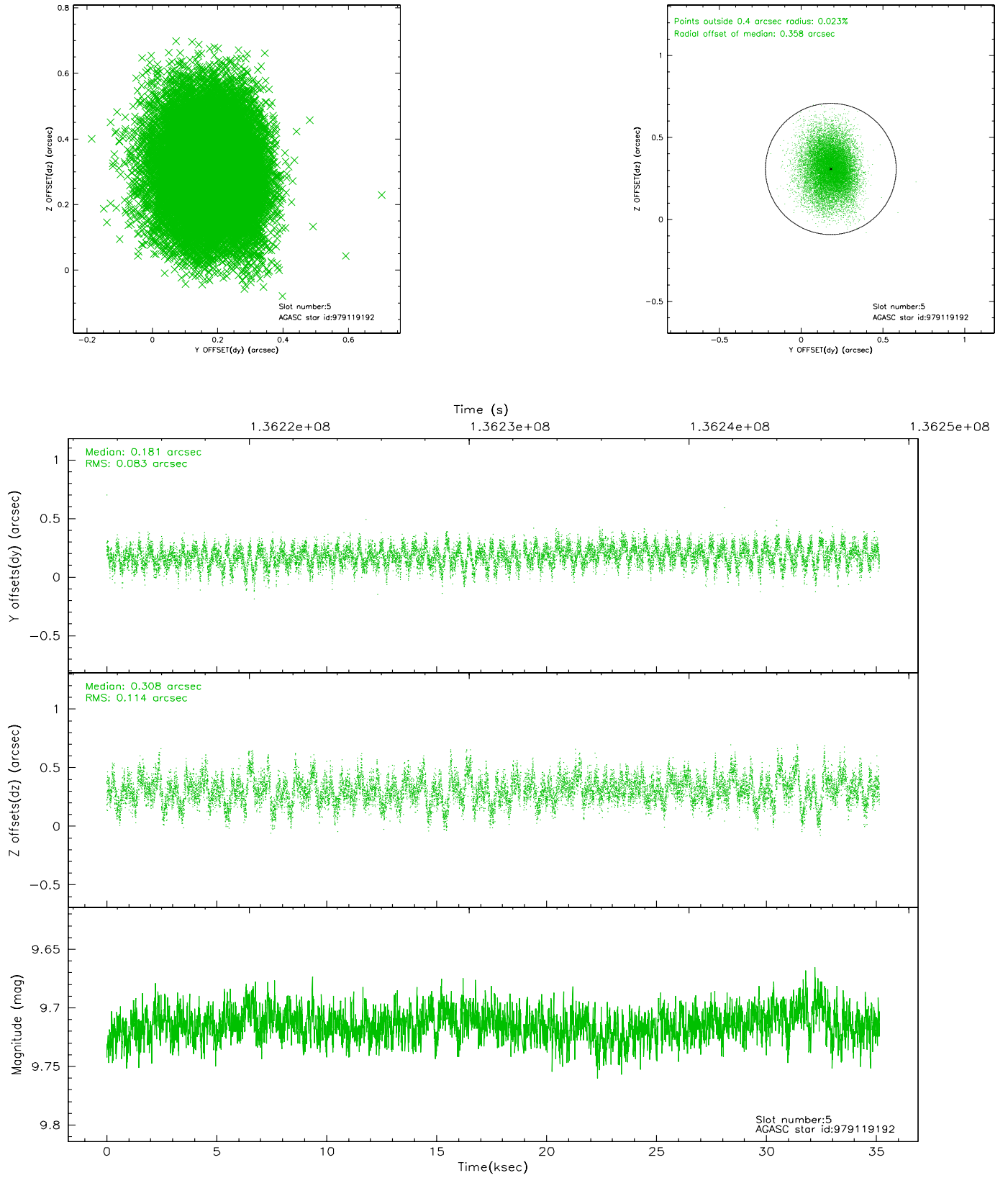
2.4.1 Slot 3



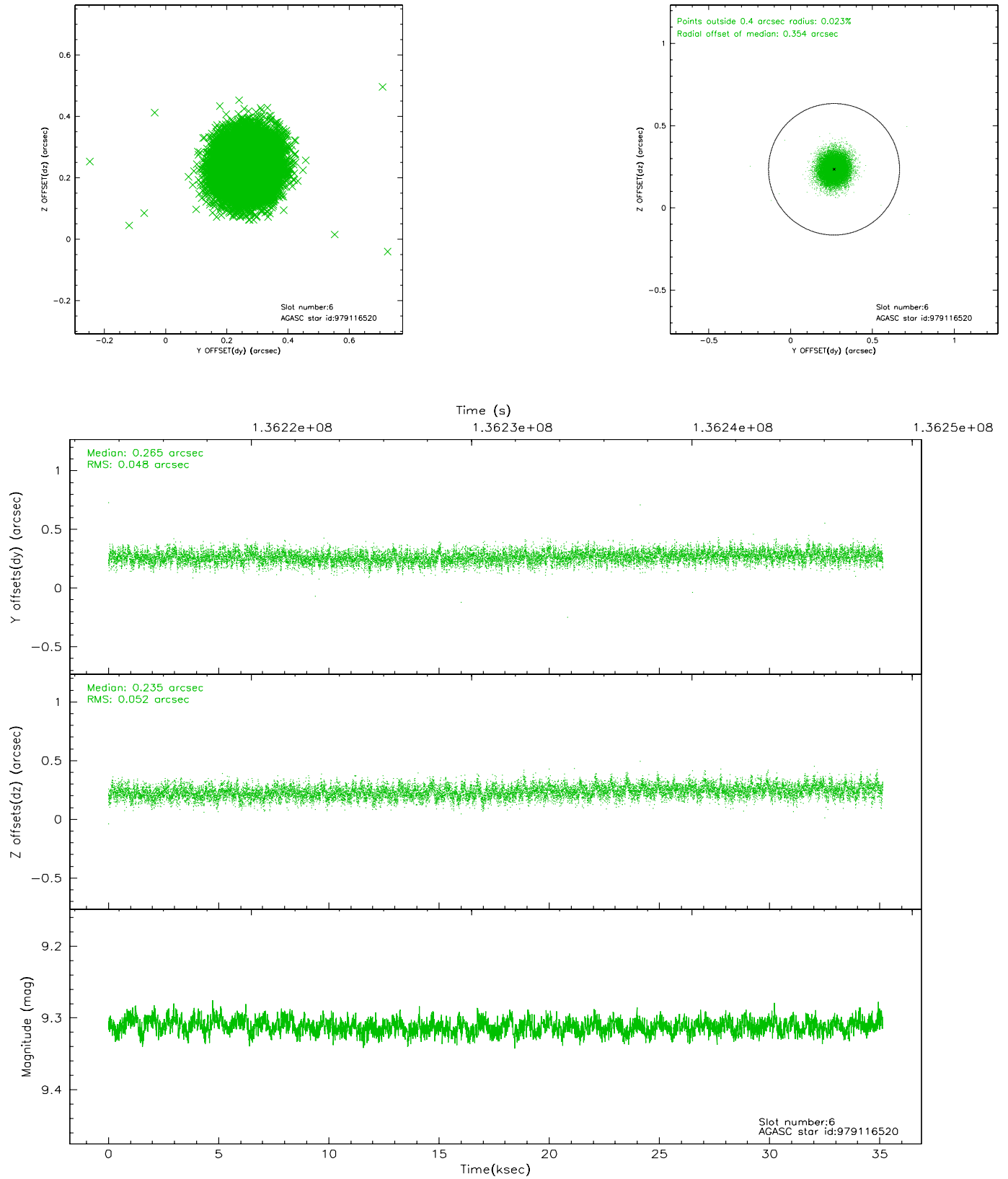
2.4.2 Slot 4



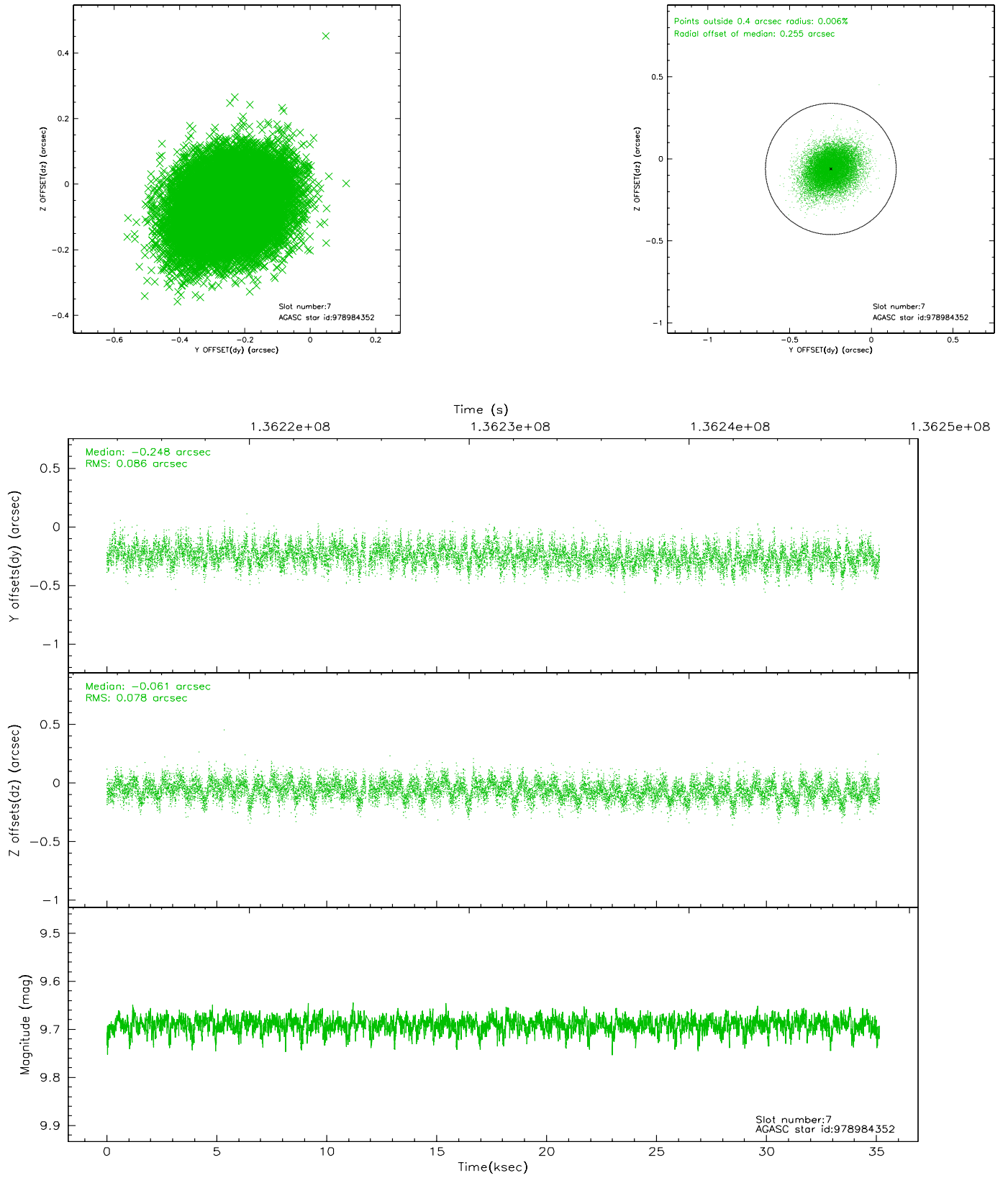
2.4.3 Slot 5



2.4.4 Slot 6

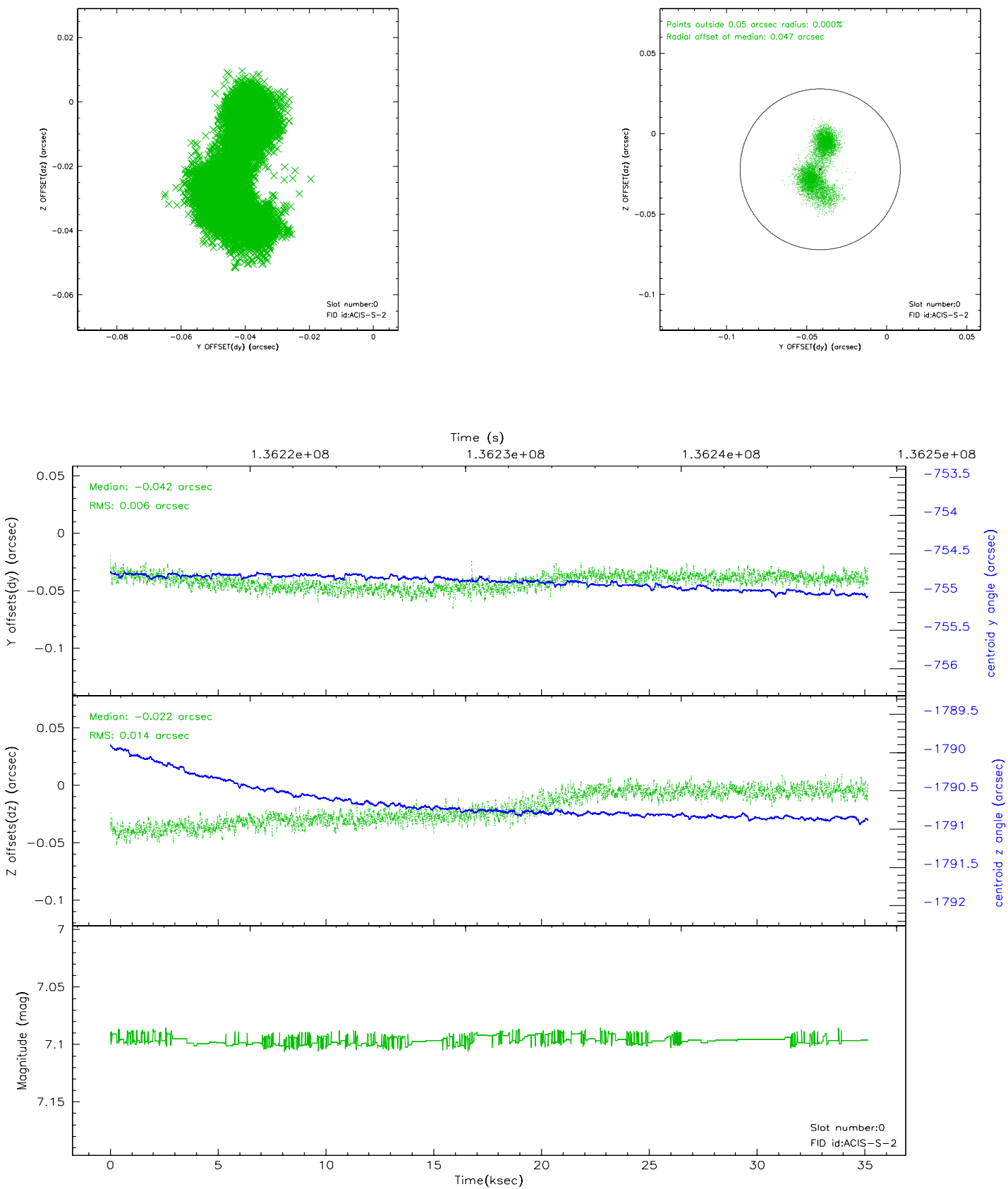


2.4.5 Slot 7

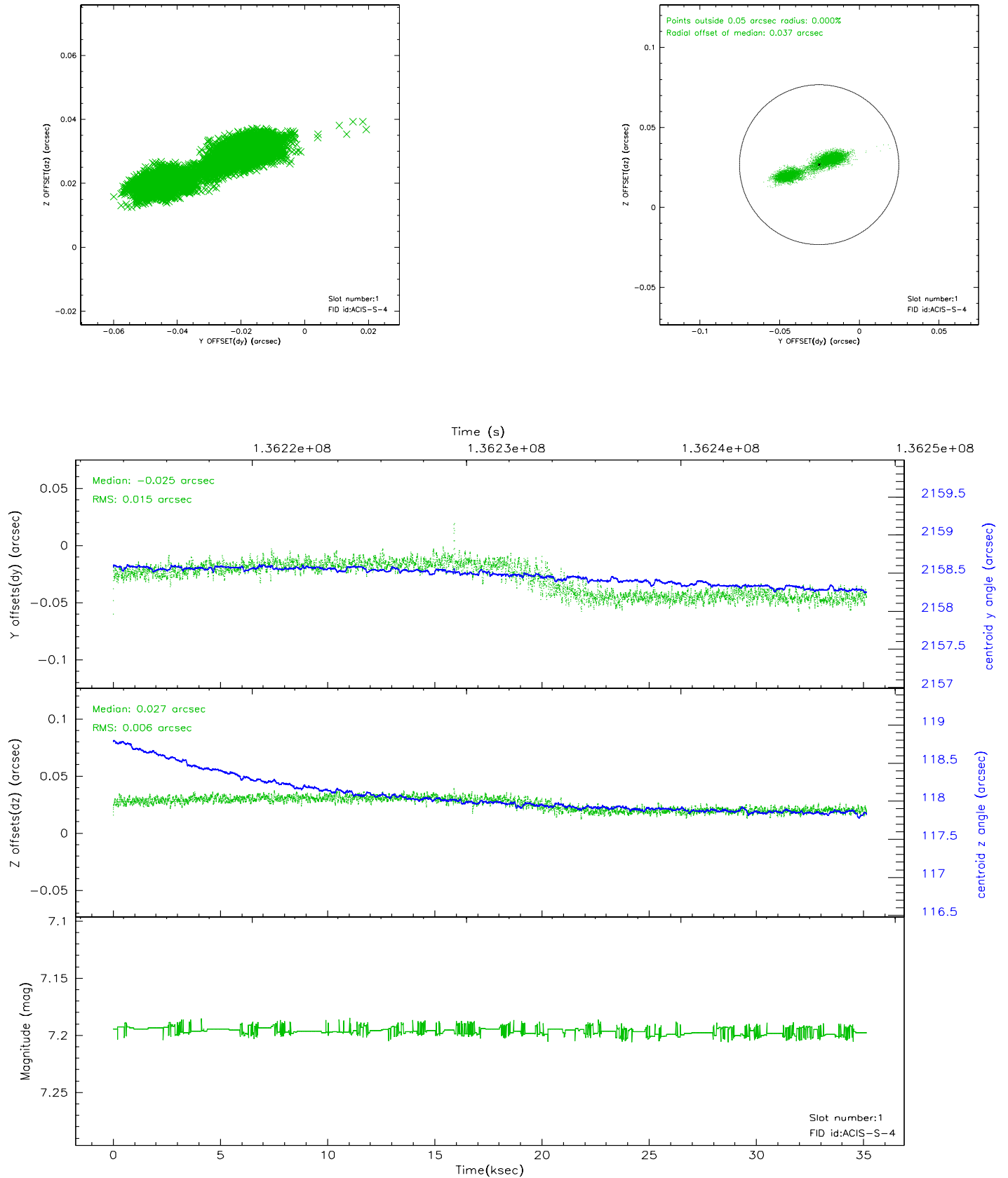


2.5 FID Slots

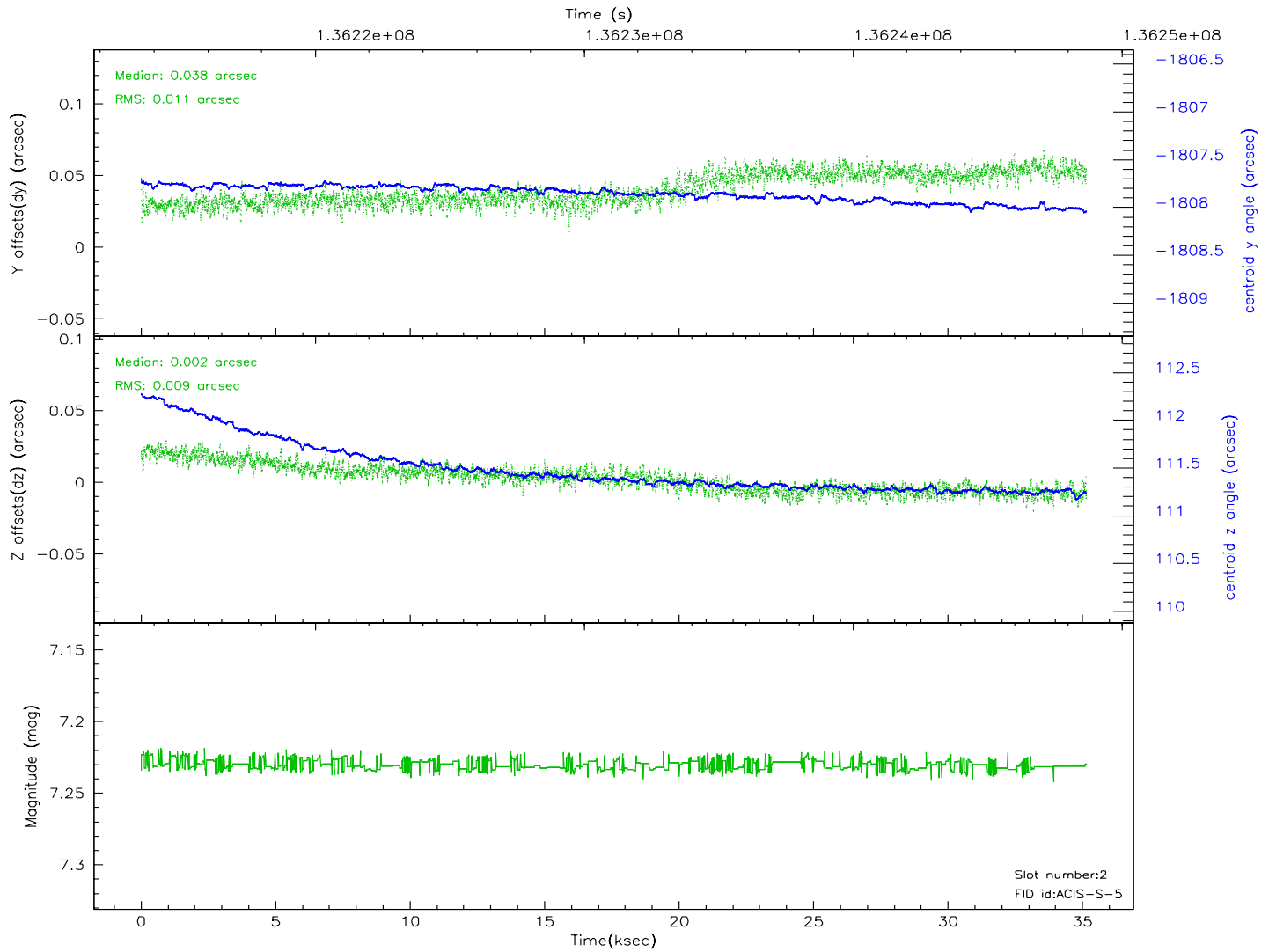
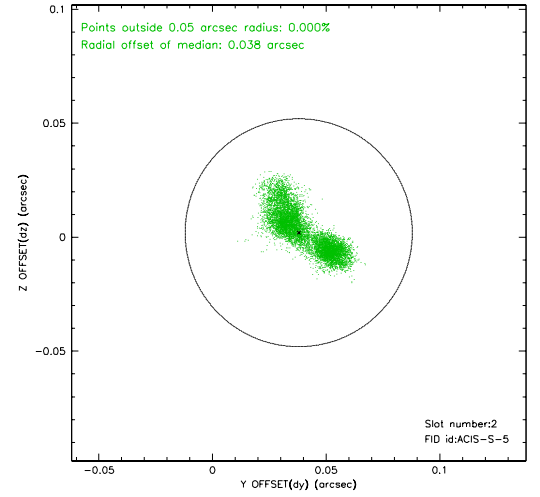
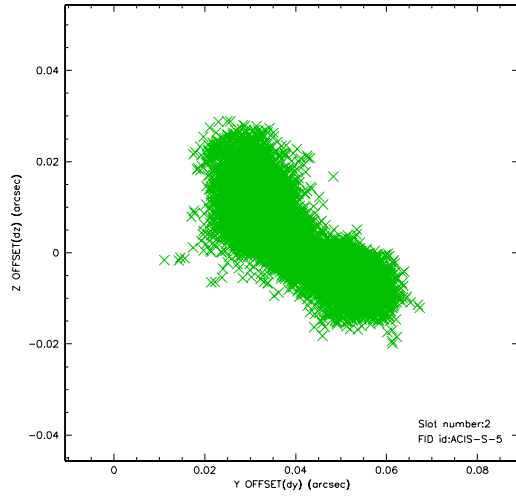
2.5.1 Slot 0



2.5.2 Slot 1



2.5.3 Slot 2

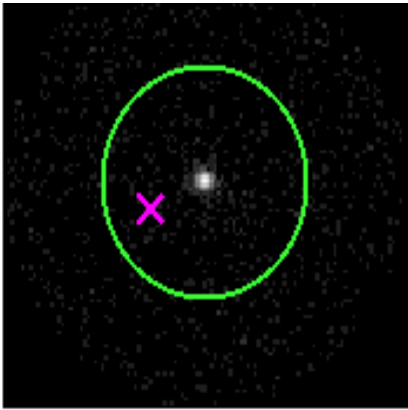


3 Gratings

3.1 HEG Arm



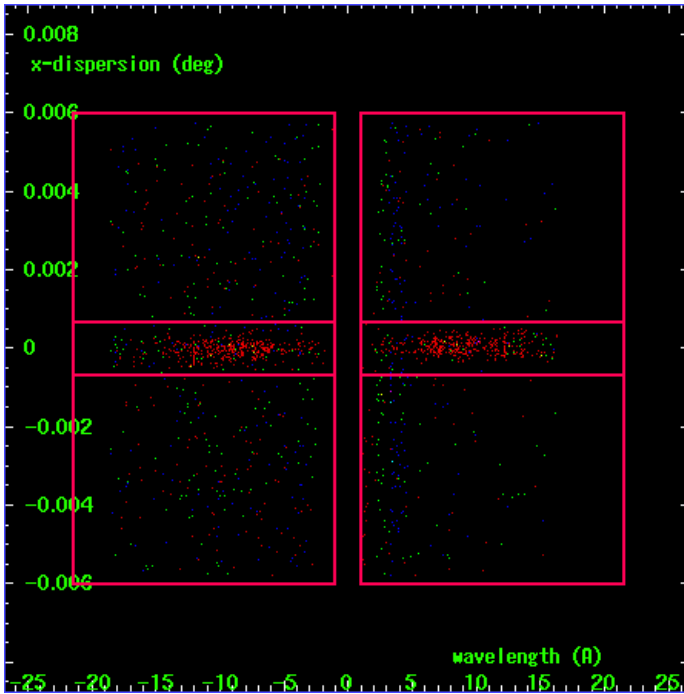
HEG Order Sort 123



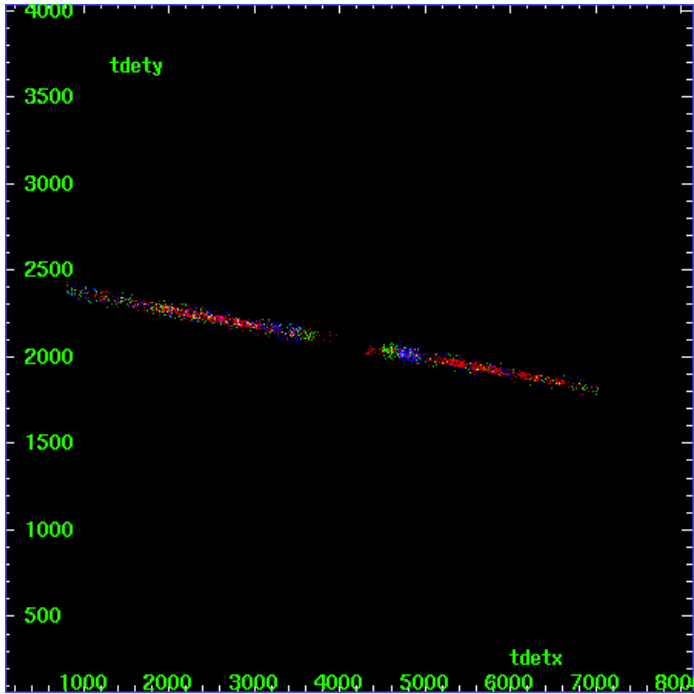
HEG Zero Order



HEG Order Sort ALL

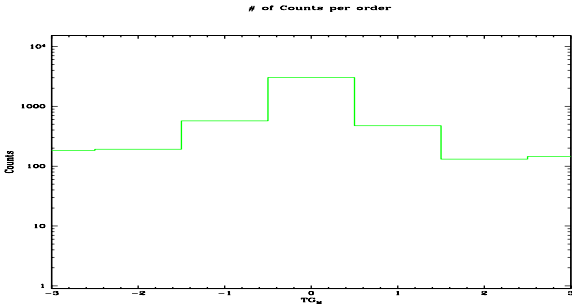


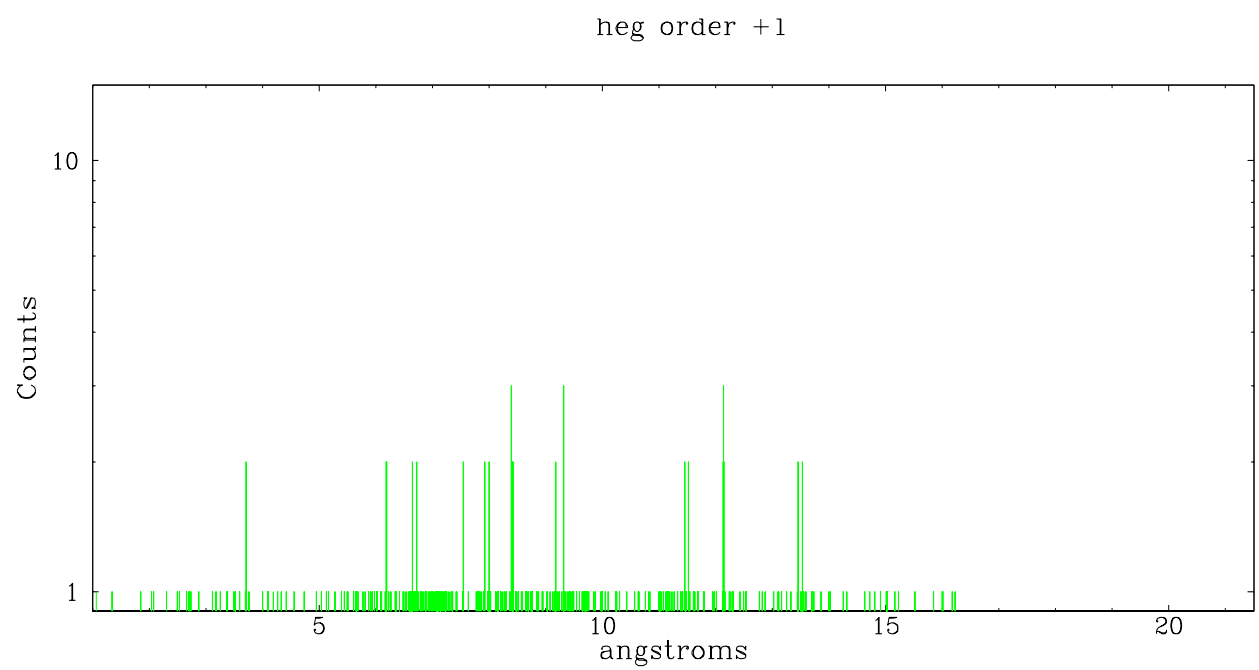
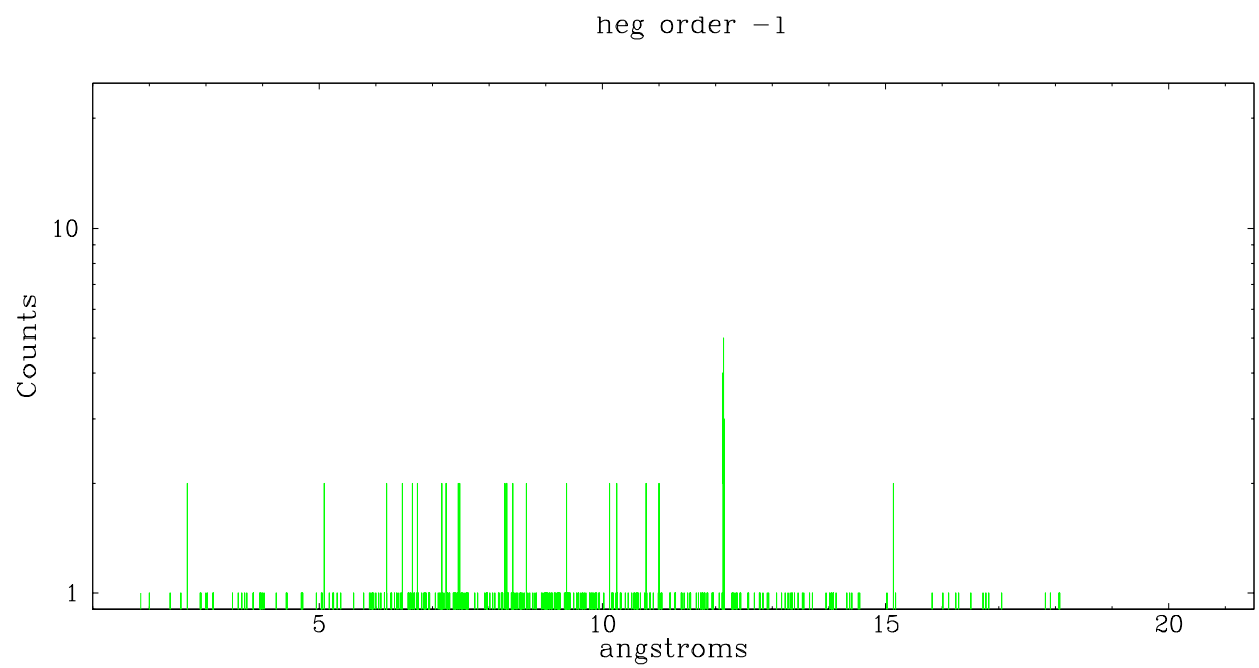
Spot Image HEG



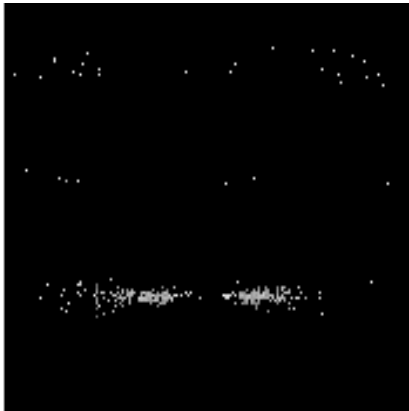
Full Detector HEG

	order -3	order -2	order -1	order 0	order 1	order 2	order 3
Events	184	192	570	3026	473	131	145

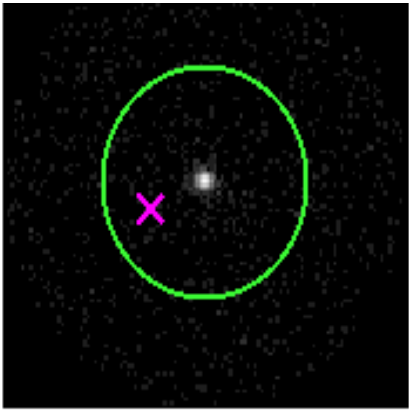




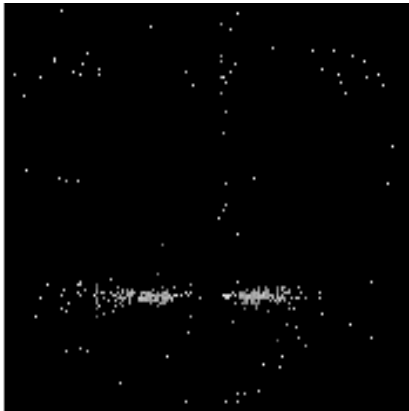
3.2 MEG Arm



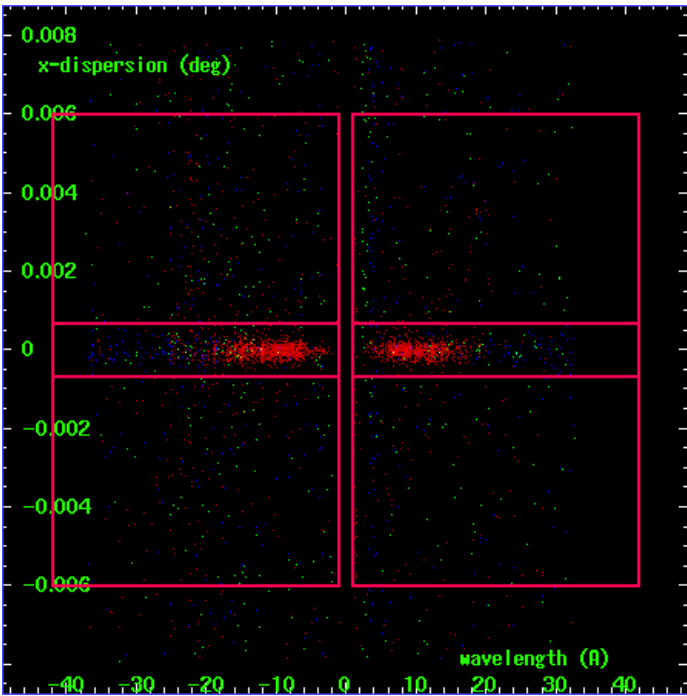
MEG Order Sort 123



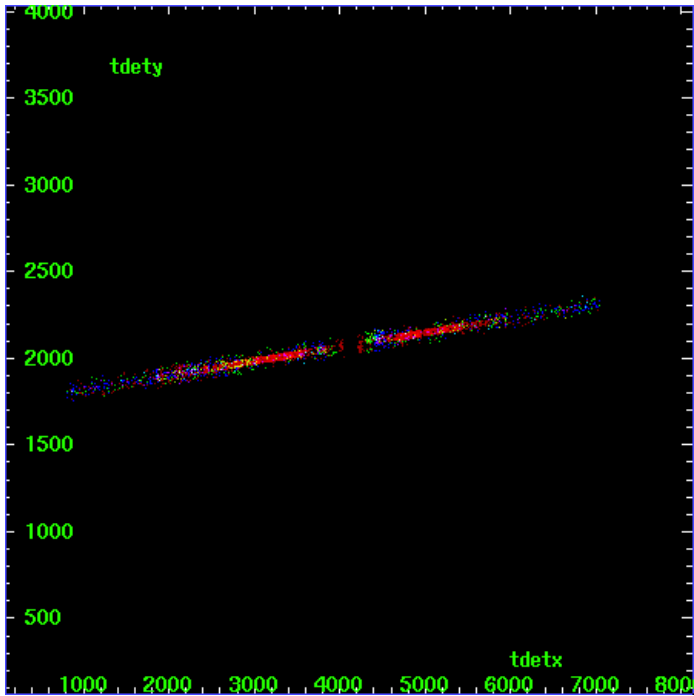
MEG Zero Order



MEG Order Sort ALL

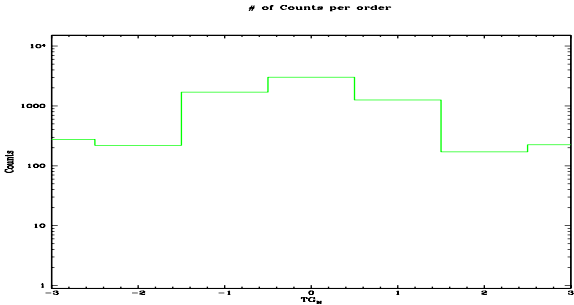


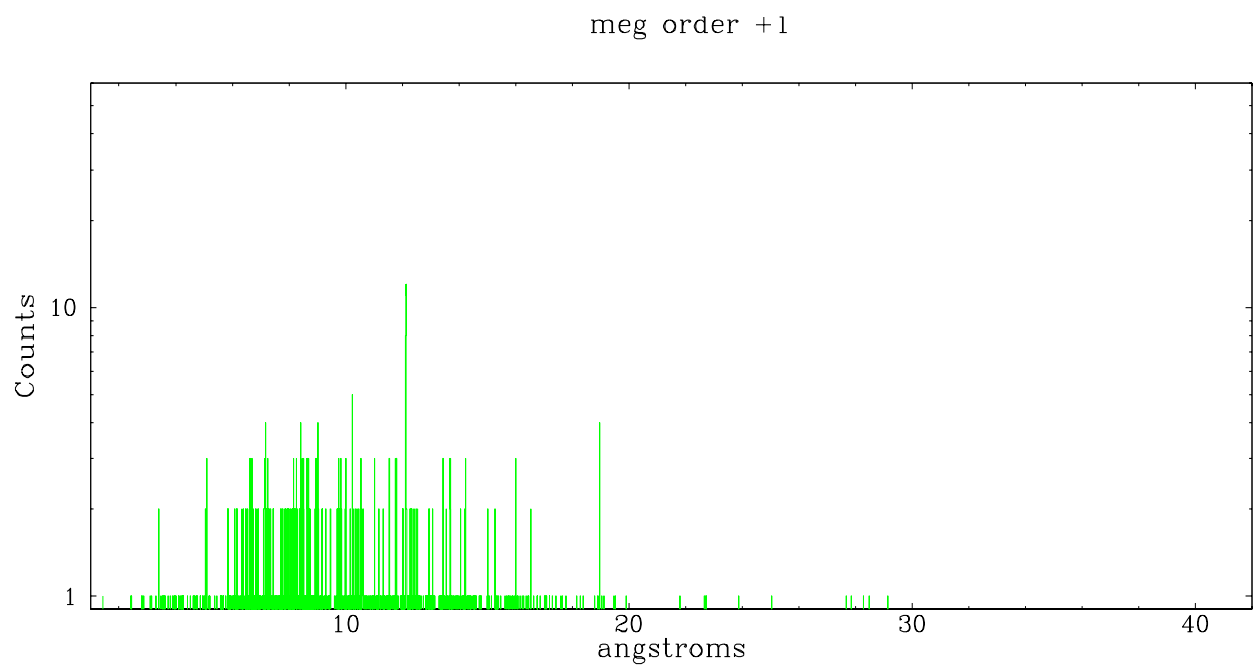
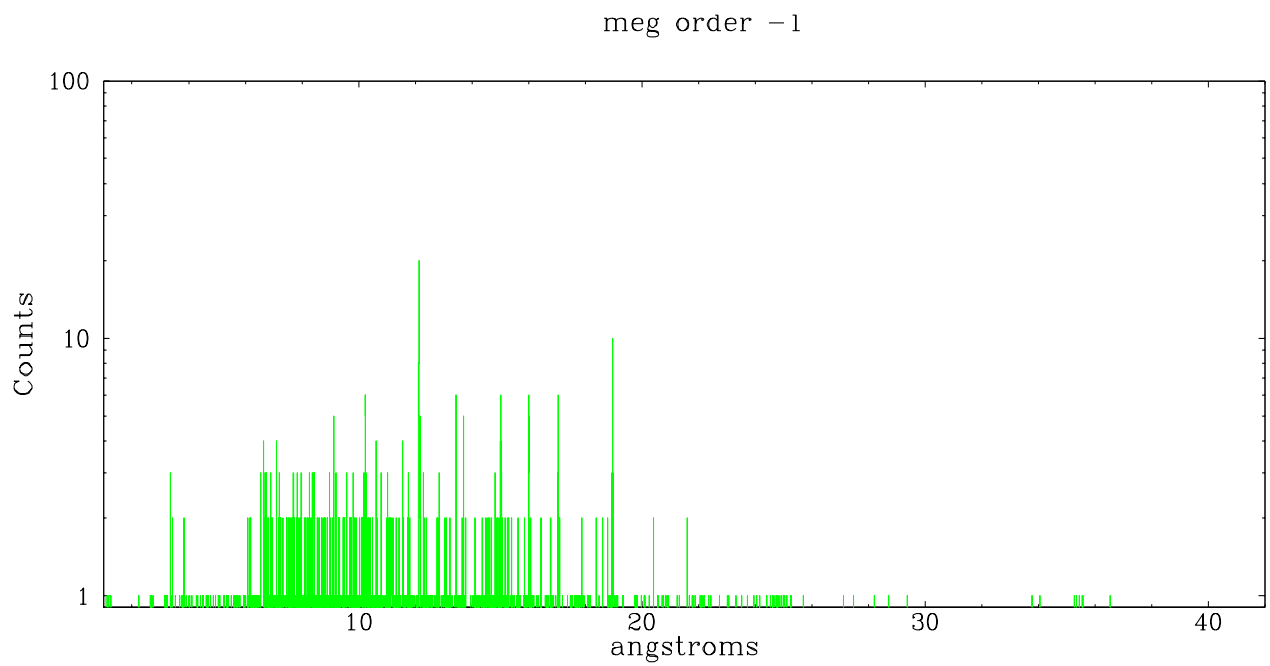
Spot Image MEG



Full Detector MEG

	order -3	order -2	order -1	order 0	order 1	order 2	order 3
Events	277	219	1699	3026	1254	171	224





A Summary

A.1 Status

V&V Scientist	Joy Nichols
V&V Date (YYYY-MM-DD)	2006.09.18
V&V Edition	1
V&V Disposition and Status	OK
V&V Charge Time	34.962

A.2 Comments