

# V&V Reference Report

## L2 ASCDS Version : 8.4.5

Observation 2426 - L2 Version 4  
Chandra X-Ray Center

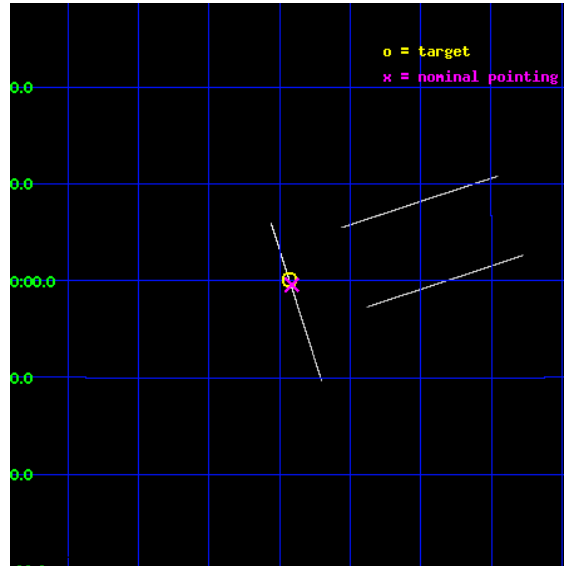
L2 Processing Date : Sep 22 2012

## Contents

<b>1</b>	<b>Front</b>	<b>2</b>
<b>2</b>	<b>OBI</b>	<b>3</b>
2.1	OBI . . . . .	3
2.1.1	Images . . . . .	3
2.1.2	Bias . . . . .	3
2.1.3	Parameters . . . . .	4
2.1.4	Events . . . . .	4
2.2	Compared Parameters . . . . .	5
2.3	Aspect . . . . .	6
2.4	Star Slots . . . . .	9
2.4.1	Slot 3 . . . . .	9
2.4.2	Slot 4 . . . . .	10
2.4.3	Slot 5 . . . . .	11
2.4.4	Slot 6 . . . . .	12
2.4.5	Slot 7 . . . . .	13
2.5	FID Slots . . . . .	14
2.5.1	Slot 0 . . . . .	14
2.5.2	Slot 1 . . . . .	15
2.5.3	Slot 2 . . . . .	16
<b>A</b>	<b>Summary</b>	<b>17</b>
A.1	Status . . . . .	17
A.2	Comments . . . . .	17

# 1 Front

seq_num	500166	Sequence number
obs_id	2426	Observation id
title	SEARCHING FOR X-RAYS FROM THE NEWLY DISCOVERED YOUNG PULSAR J1740+1000	Proposal title
observer	Zaven Arzoumanian	Principal investigator
object	PSR J1740+1000	Source name
ra_targ	265.107917	Observer's specified target RA [deg]
dec_targ	10.001722	Observer's specified target Dec [deg]
ra_nom	265.10321610027	Nominal RA [deg]
dec_nom	9.9931379324986	Nominal Dec [deg]
roll_nom	251.94907702604	Nominal Roll [deg]
revision	4	Processing version of data
ontime	16547.25	Sum of GTIs [s]
livetime	16482.612304688	Livetime [s]
ontime0	16547.25	Sum of GTIs [s]
ontime1	16547.25	Sum of GTIs [s]
ontime2	16547.25	Sum of GTIs [s]
ontime3	16547.25	Sum of GTIs [s]
ontime6	16547.25	Sum of GTIs [s]
ontime7	16547.25	Sum of GTIs [s]
l2events	158983	Number of level 2 events

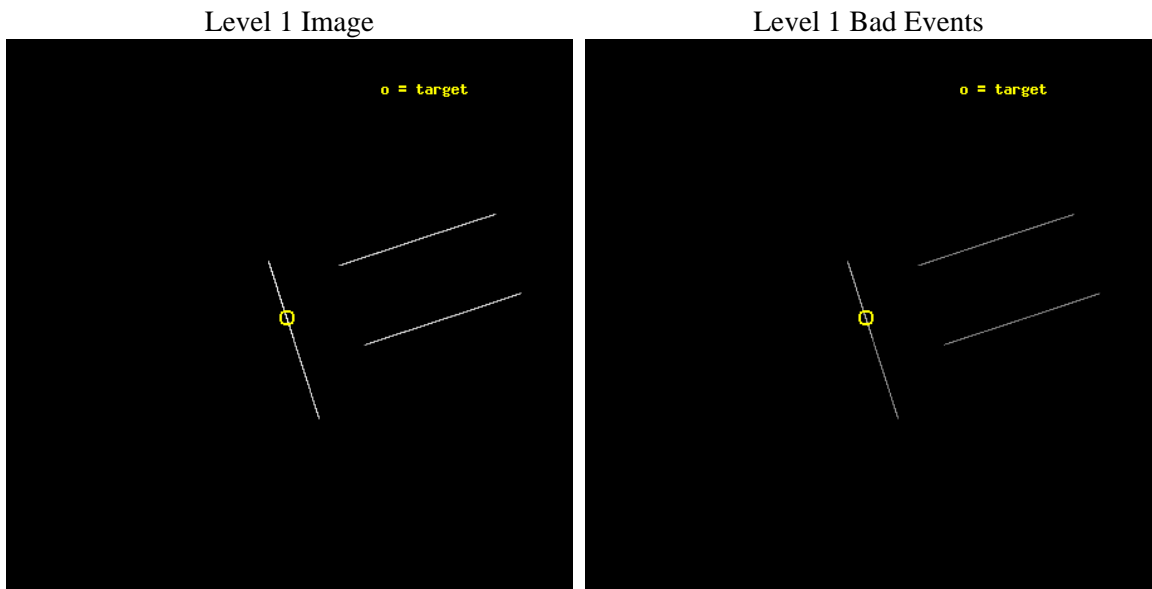




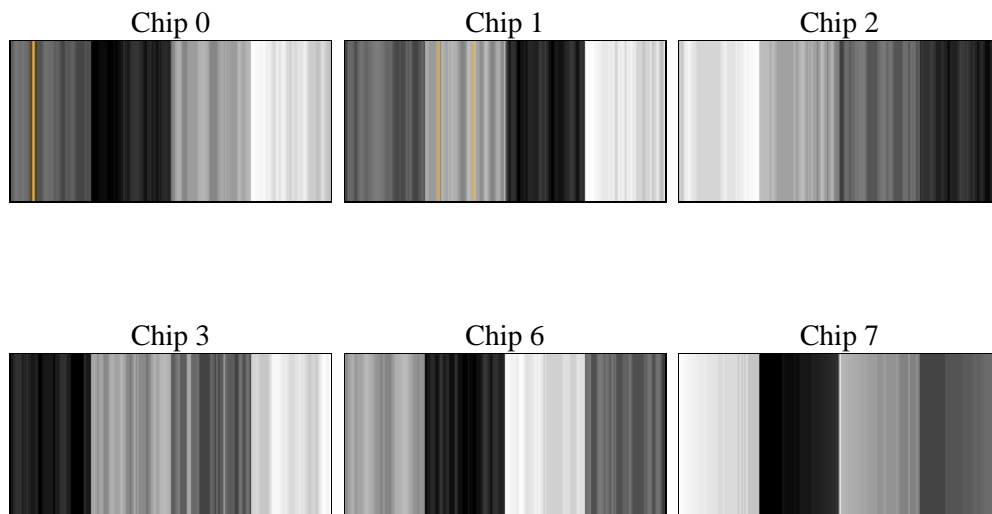
## 2 OBI

### 2.1 OBI

#### 2.1.1 Images



#### 2.1.2 Bias



### 2.1.3 Parameters

obi_num	0	Obi number	sched_exp_time	15500.000000	[s] Scheduled observation exposure time
ascdsver	8.4.5	Processing system revision	ontime	16547.25	Sum of GTIs [s]
caldbver	4.5.1.1	&#160	ontime0	16547.25	Sum of GTIs [s]
date	2012-09-22T07:58:39	Date and time of file creation	ontime1	16547.25	Sum of GTIs [s]
revision	4	Processing version of data	ontime2	16547.25	Sum of GTIs [s]
			ontime3	16547.25	Sum of GTIs [s]
			ontime6	16547.25	Sum of GTIs [s]
			ontime7	16547.25	Sum of GTIs [s]
			l1events	205487	Number of level 1 events

### 2.1.4 Events

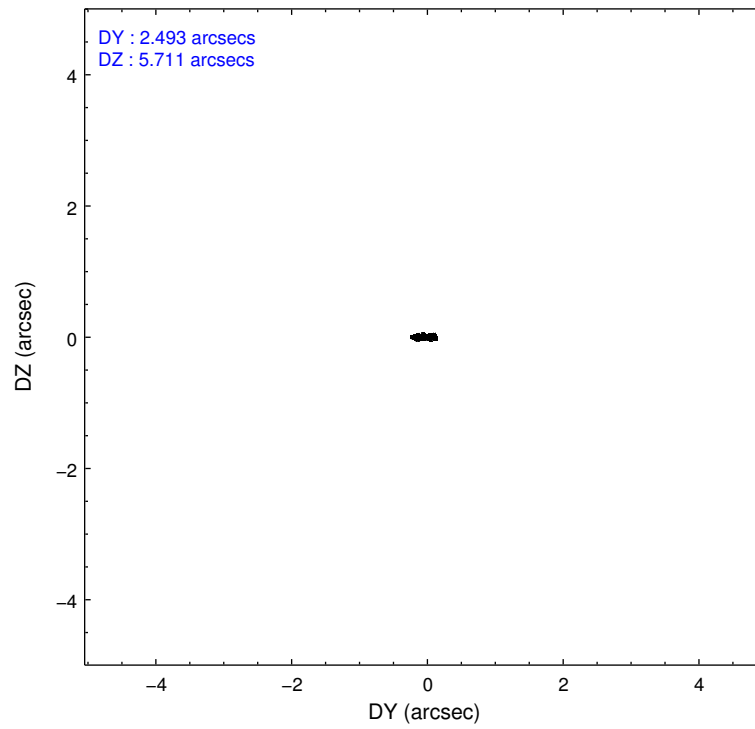
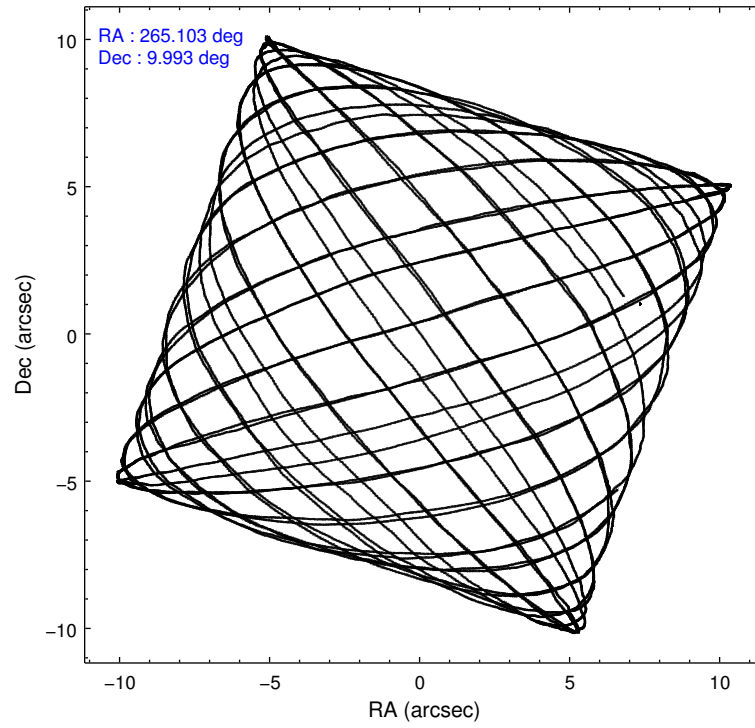
	ccd 0	ccd 1	ccd 2	ccd 3	ccd 6	ccd 7
level 1 events	25718	25829	23391	26546	26848	77155
rejected events	3740	4290	3488	3920	4166	12351
rejected %	14%	16%	14%	14%	15%	16%

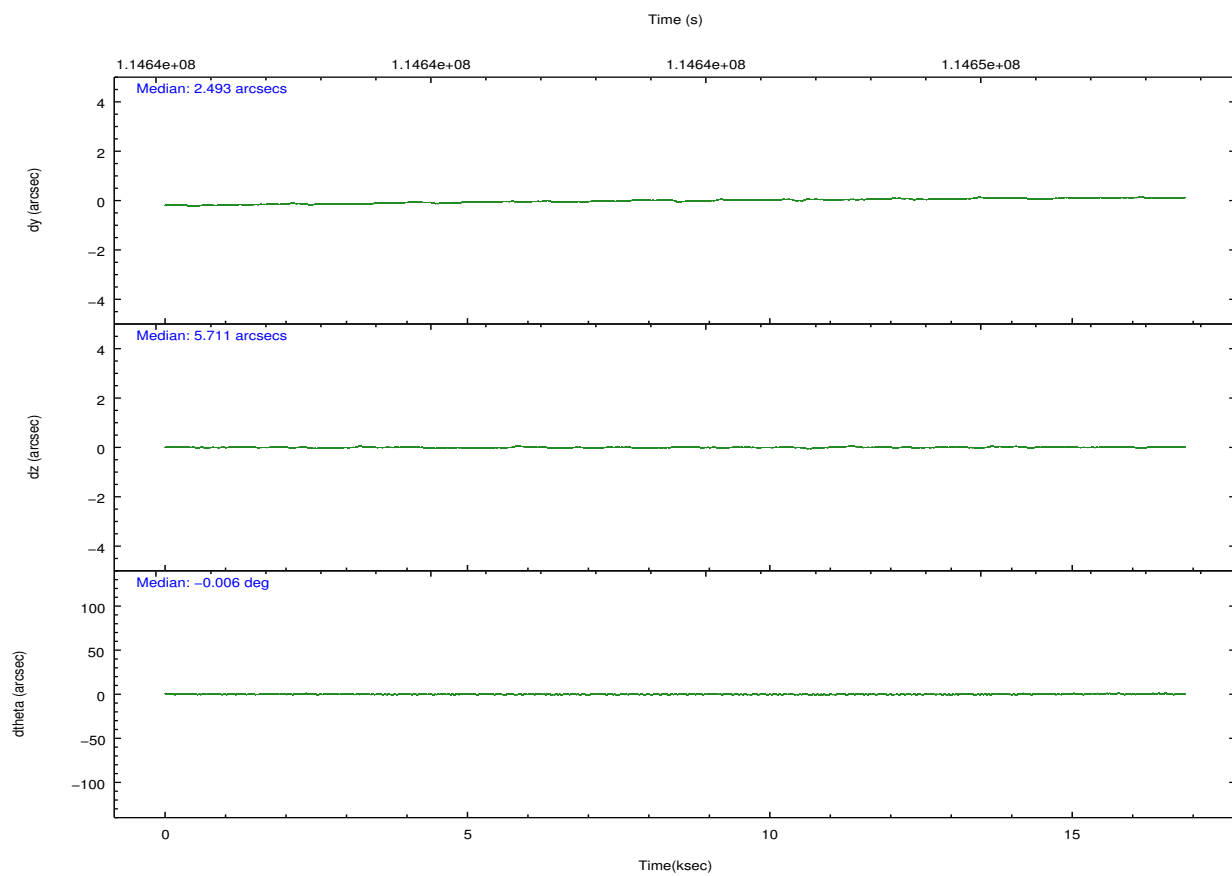
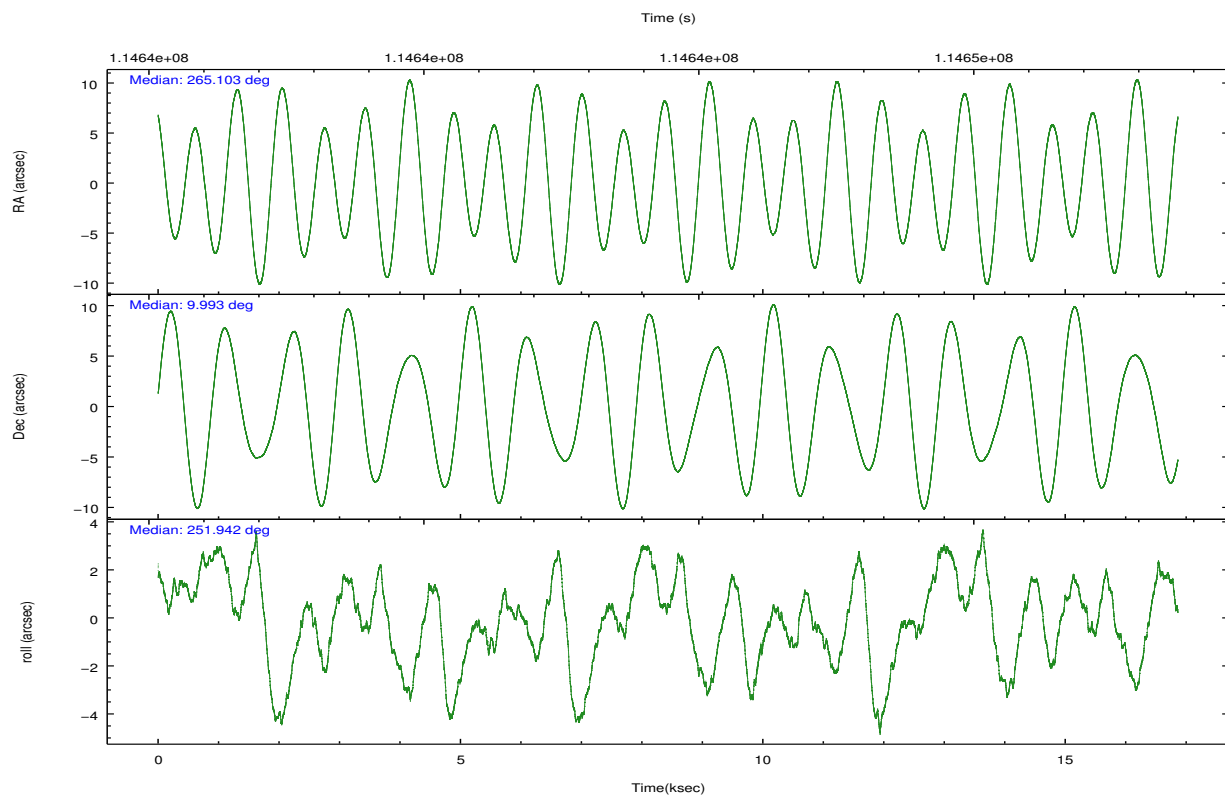
	ccd 0	ccd 1	ccd 2	ccd 3	ccd 6	ccd 7
grade 0 events	3145	2826	2731	2967	3380	7248
	12%	10%	11%	11%	12%	9%
grade 1 events	52	99	66	71	87	188
	0%	0%	0%	0%	0%	0%
grade 2 events	8812	9180	8128	9416	9233	15928
	34%	35%	34%	35%	34%	20%
grade 3 events	3064	2491	2582	3268	2805	5385
	11%	9%	11%	12%	10%	6%
grade 4 events	2850	2479	2629	2797	2730	5167
	11%	9%	11%	10%	10%	6%
grade 5 events	3684	4189	3419	3846	4076	12142
	14%	16%	14%	14%	15%	15%
grade 6 events	4111	4565	3836	4181	4537	31097
	15%	17%	16%	15%	16%	40%
grade 7 events	0	0	0	0	0	0
	0%	0%	0%	0%	0%	0%

## 2.2 Compared Parameters

Parameter	Planned	Actual	Parameter	Planned	Actual
Instrument	ACIS	ACIS	Obspar format version number	7	7
Detector	ACIS-012367	ACIS-012367	Obspar file type	PREDICTED	ACTUAL
Grating	NONE	NONE	Obspar update status	NONE	UPDATED
Data mode	CC33_FAINT	CC33_FAINT	Number of optional ACIS chips dropped	0	0
Observation mode	POINTING	POINTING	On-chip summing requested	N	N
[deg] Pointing RA	265.097198	265.1032161002743	Subarray requested	NONE	NONE
[deg] Pointing Dec	10.019757	9.993137932498634	Alternating exposures requested	N	N
[deg] Pointing Roll	251.793493	251.9490770260416	[s] Primary exposure time	0.000000	0
[mm] SIM focus pos	-0.684267	-0.6828225247311905			
[mm] SIM defocus	0	0.001444936568705701			
[mm] SIM translation stage pos	-190.132523	-190.1425803651734			
[mm] SIM translation stage offset	0	0.01005778216563158			
[s] Observation start time (MET)	114637373.184000	114635826.72554			
Observation start date	2001-08-19T19:41:49	2001-08-19T19:17:06			
[s] Observation end time (MET)	114652873.184000	114653450.06374			
Observation end date	2001-08-20T00:00:09	2001-08-20T00:10:50			
Read mode	CONTINUOUS	CONTINUOUS			

## 2.3 Aspect



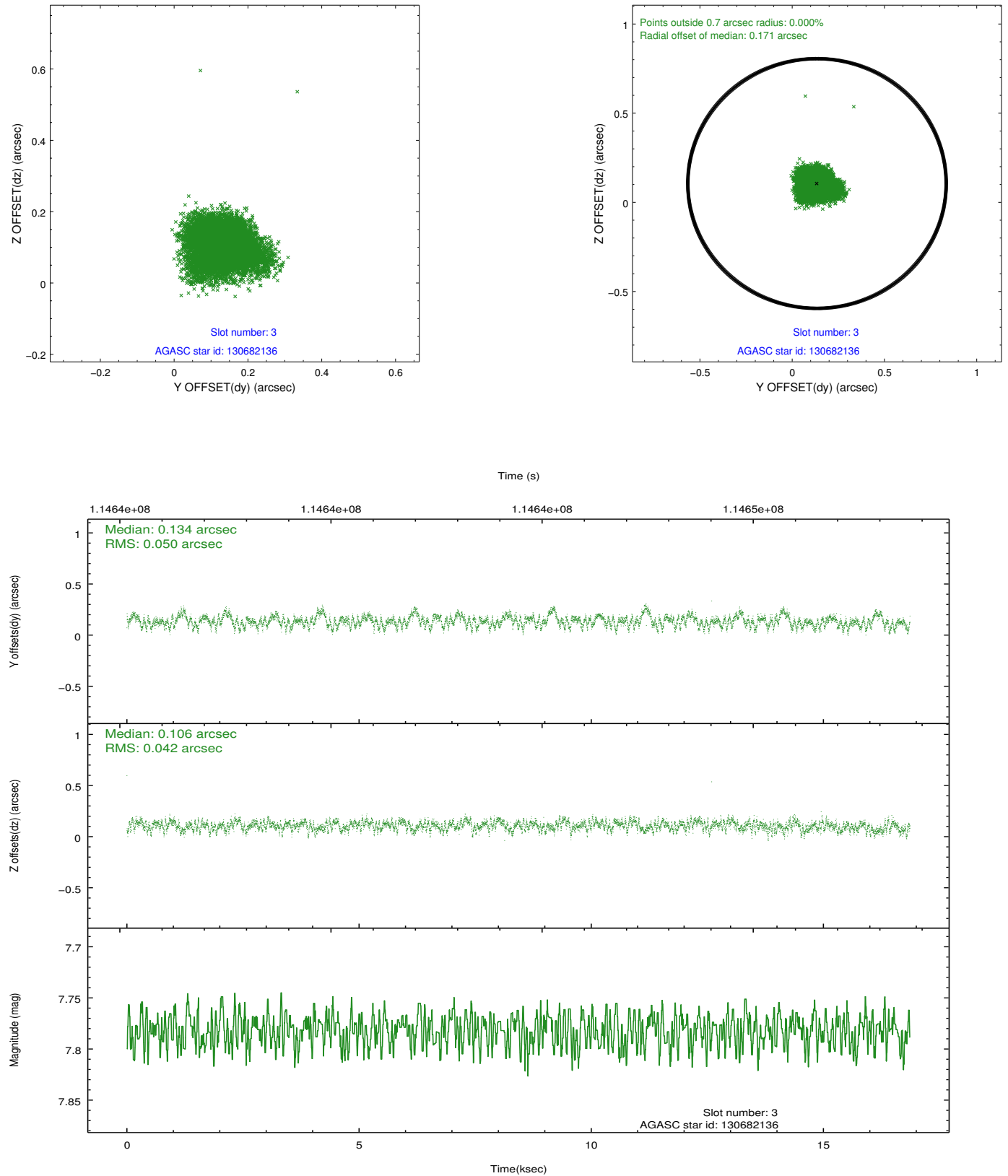


### Slot Statistics

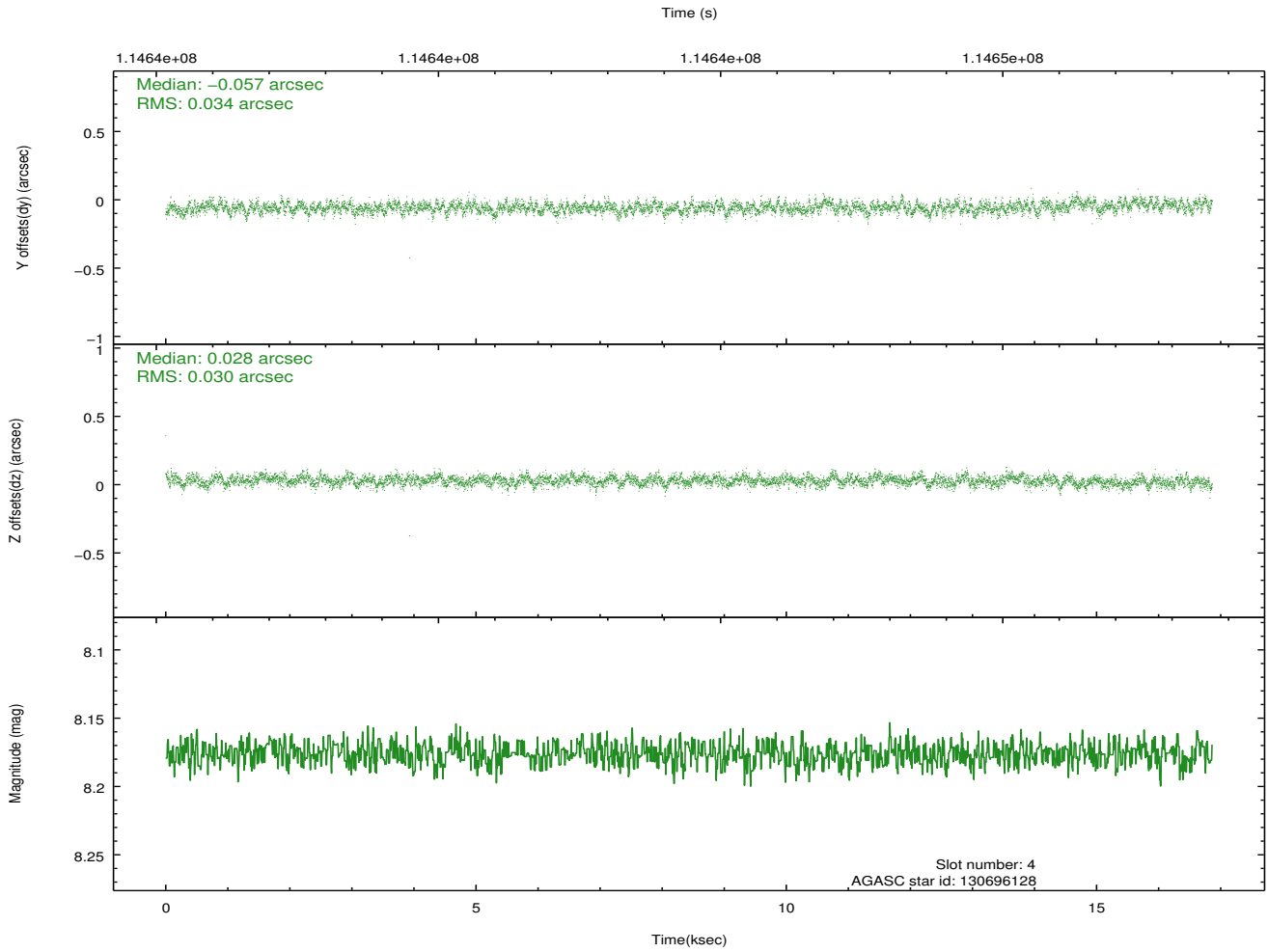
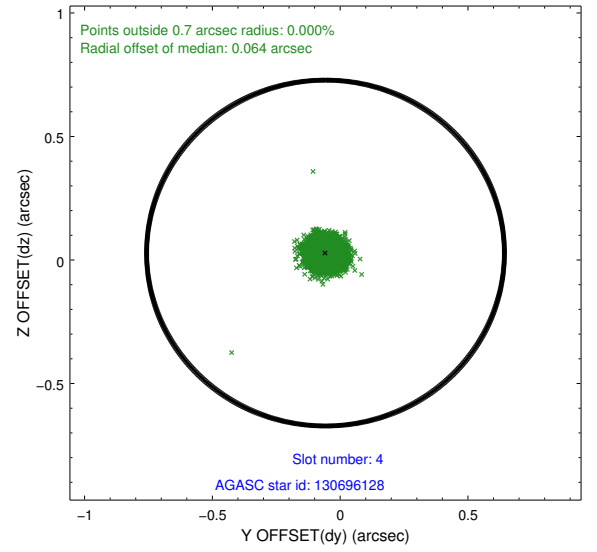
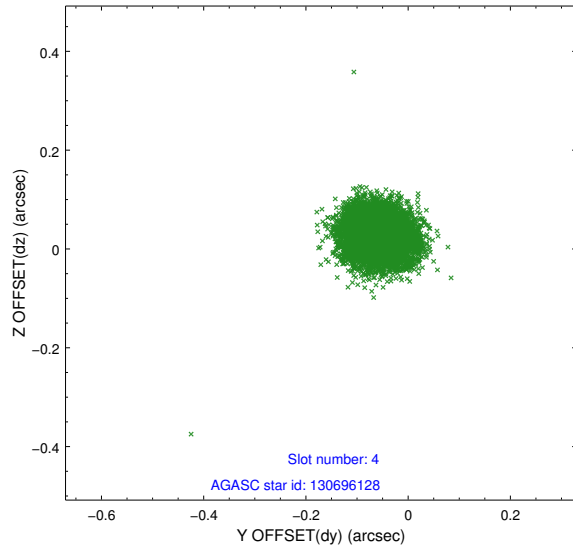
slot	status	id	mag	n_pts	med_dy	med_dz	dr1	dr2	ra	dec	mean_y	mean_z
0	FID	ACIS-S-2	7.12	4113	-0.039	-0.005	0.009	0.024	0.000000	0.000000	-755.09	-1726.81
1	FID	ACIS-S-4	7.20	4113	-0.022	0.020	0.008	0.030	0.000000	0.000000	2158.03	181.52
2	FID	ACIS-S-5	7.24	4113	0.031	-0.007	0.009	0.016	0.000000	0.000000	-1807.60	175.33
3	GUIDE	130682136	7.78	8227	0.134	0.106	0.069	0.112	265.593767	9.449551	1398.35	2317.02
4	GUIDE	130696128	8.18	8227	-0.057	0.028	0.048	0.079	265.572442	10.443023	-1973.71	1122.55
5	GUIDE	130688752	8.59	8226	-0.075	-0.095	0.055	0.089	265.448008	10.564793	-2252.15	566.49
6	GUIDE	130685880	8.50	8225	0.066	0.001	0.057	0.092	264.710749	9.543534	2057.07	-766.98
7	GUIDE	130679984	9.36	8218	-0.072	-0.033	0.097	0.156	264.489824	10.230265	-48.32	-2280.99

## 2.4 Star Slots

### 2.4.1 Slot 3

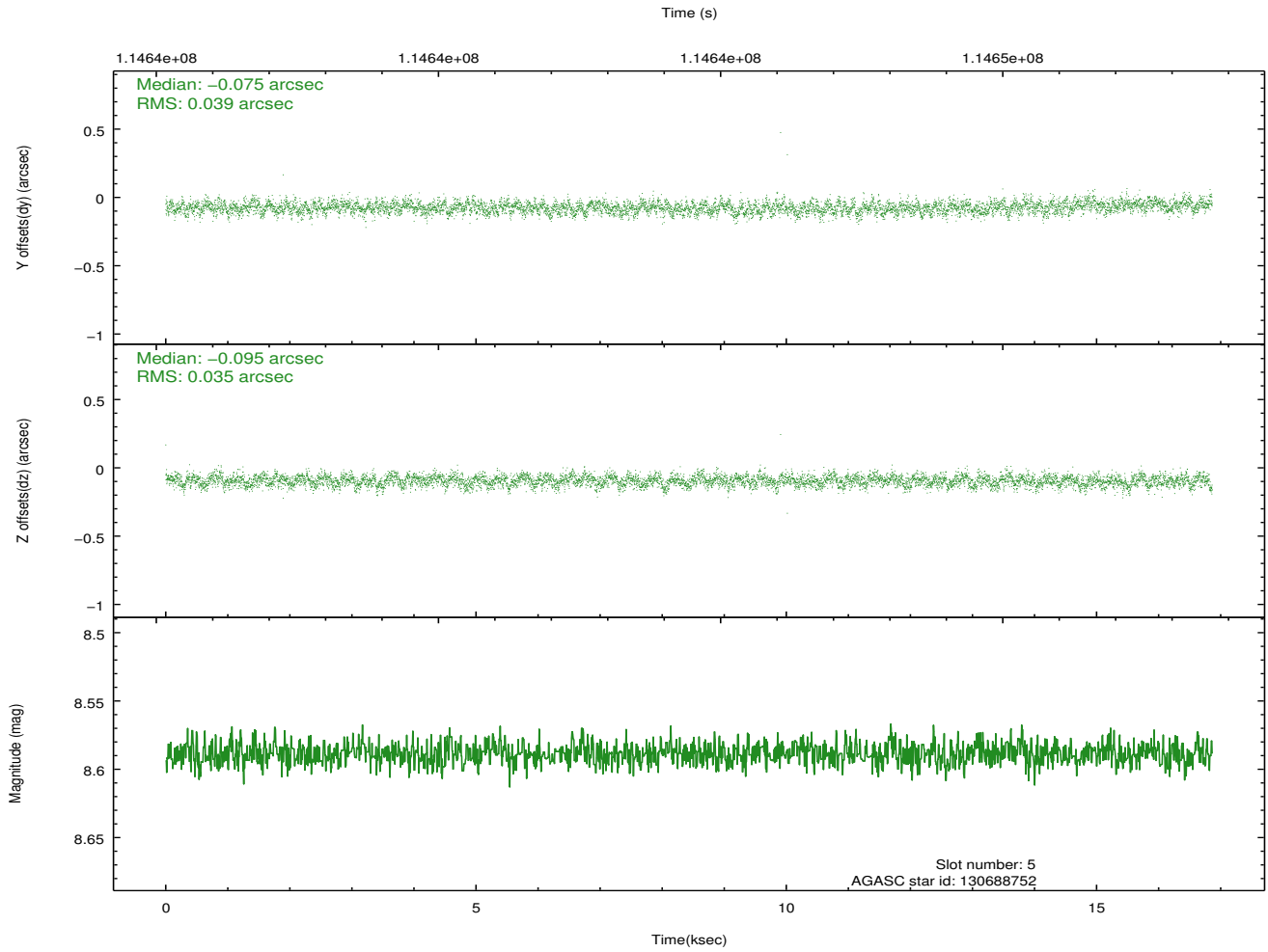
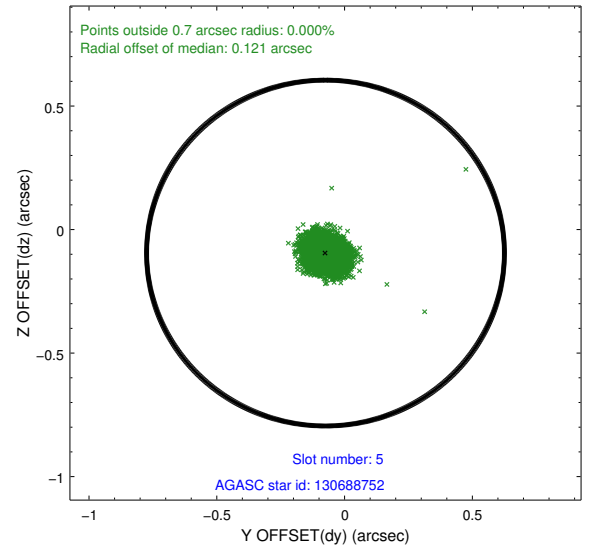
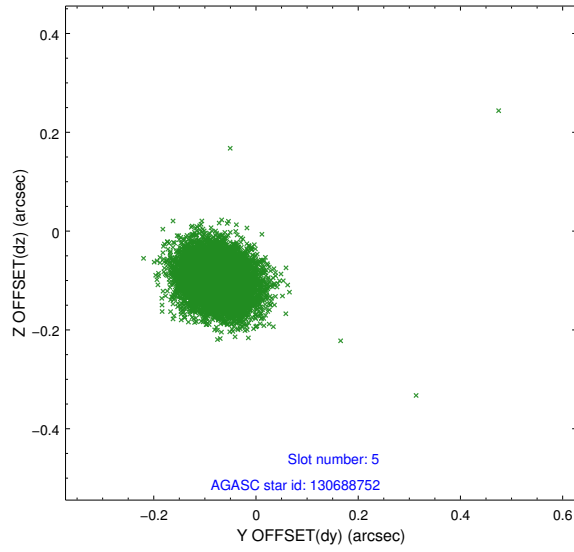


## 2.4.2 Slot 4

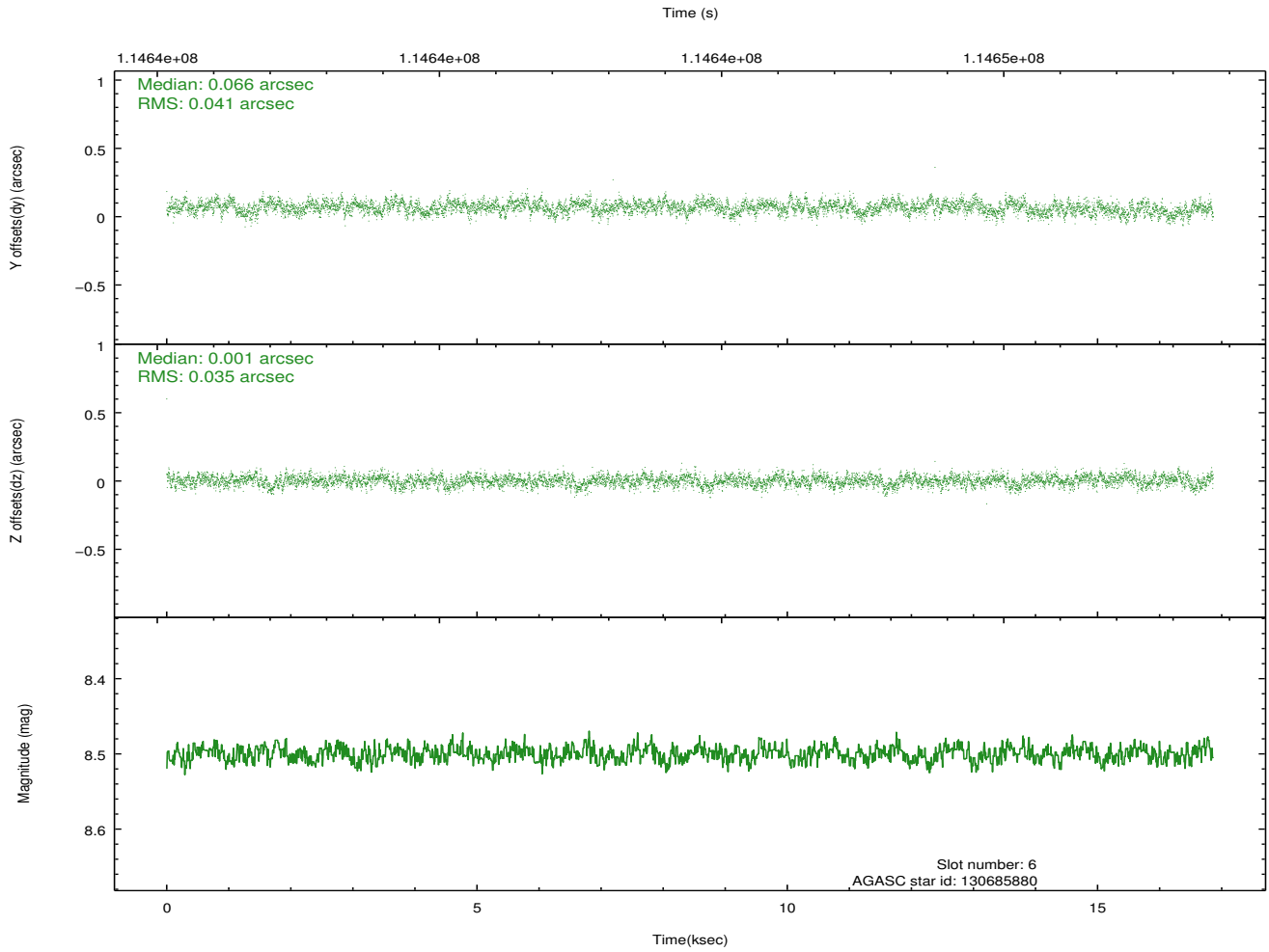
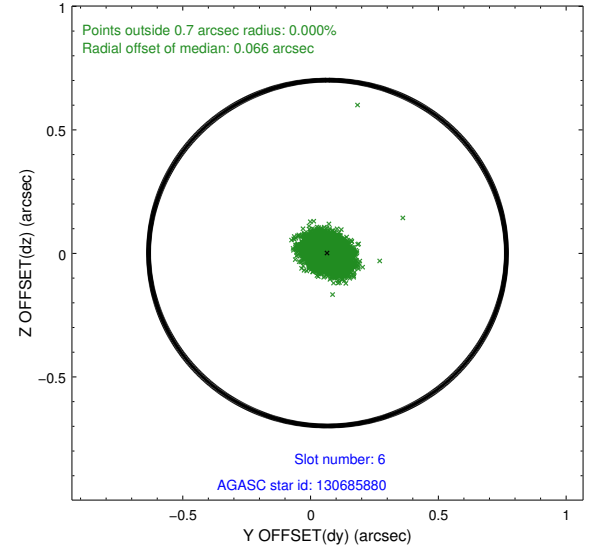
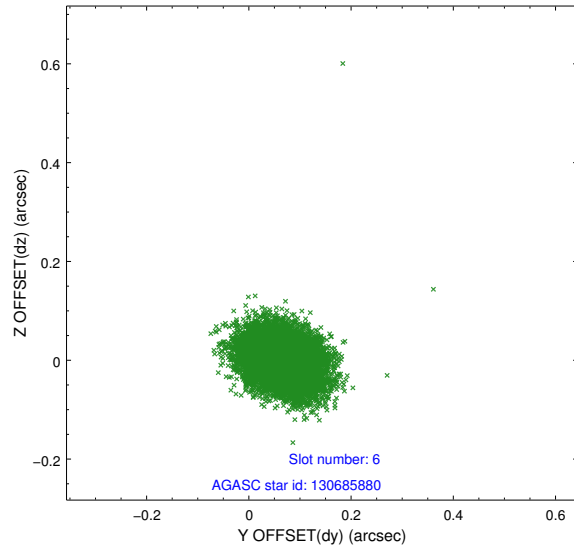




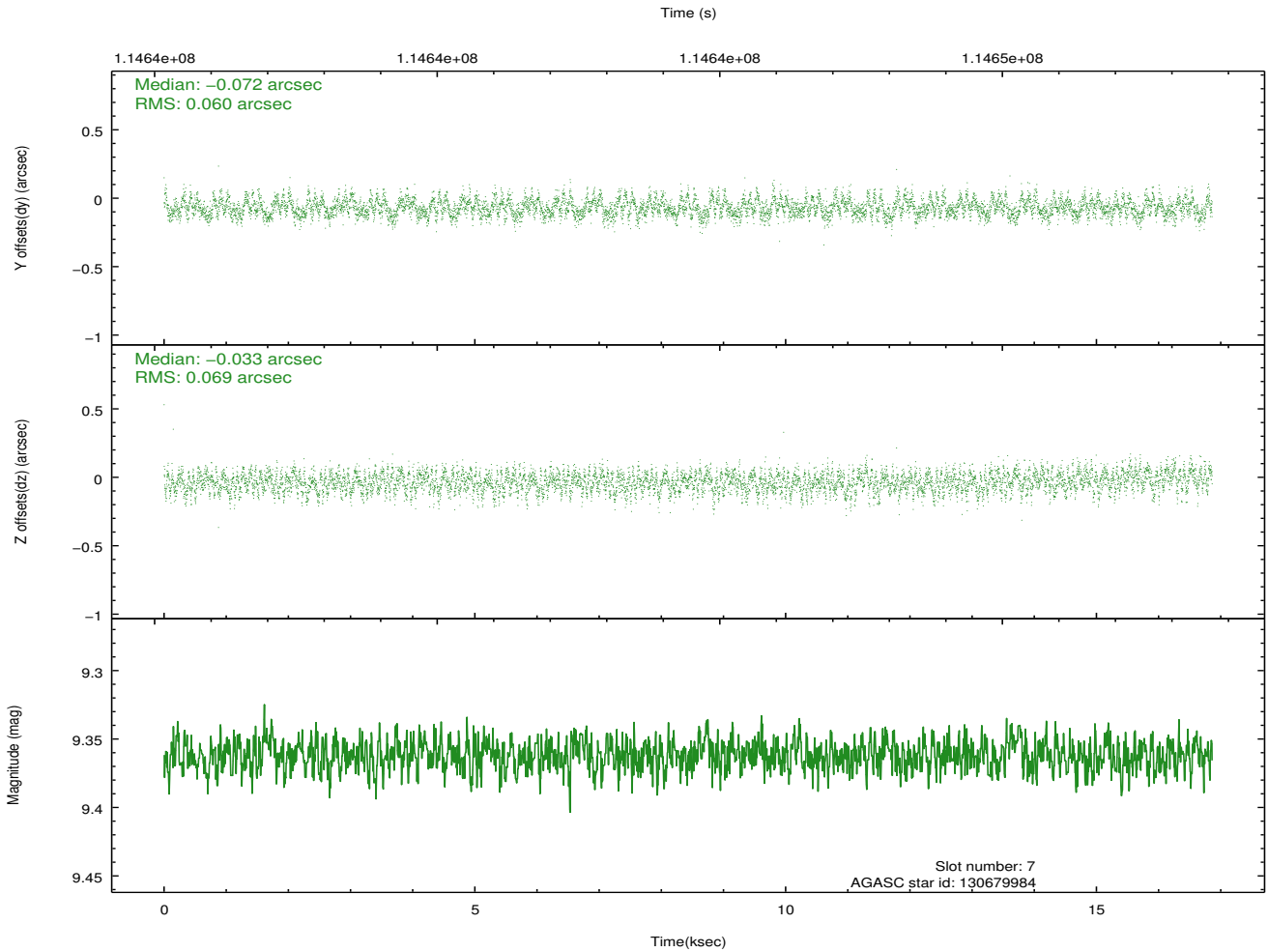
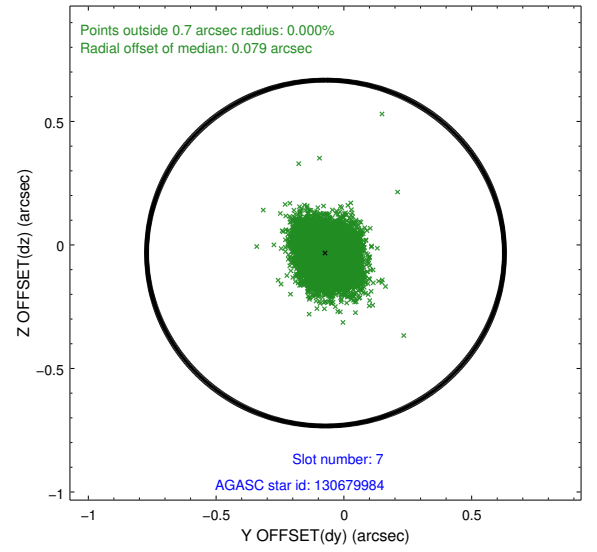
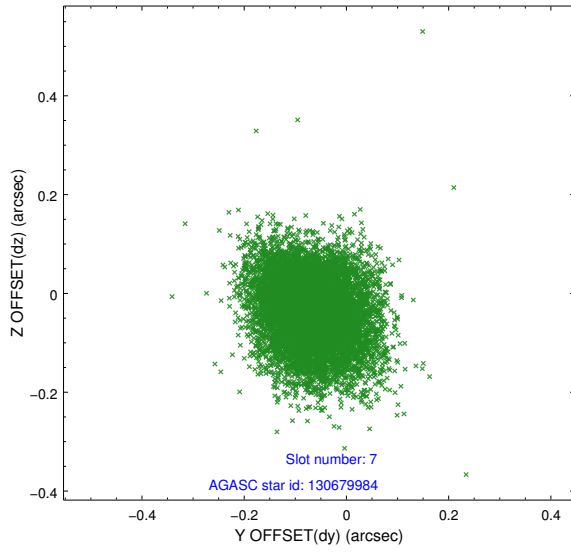
### 2.4.3 Slot 5



## 2.4.4 Slot 6

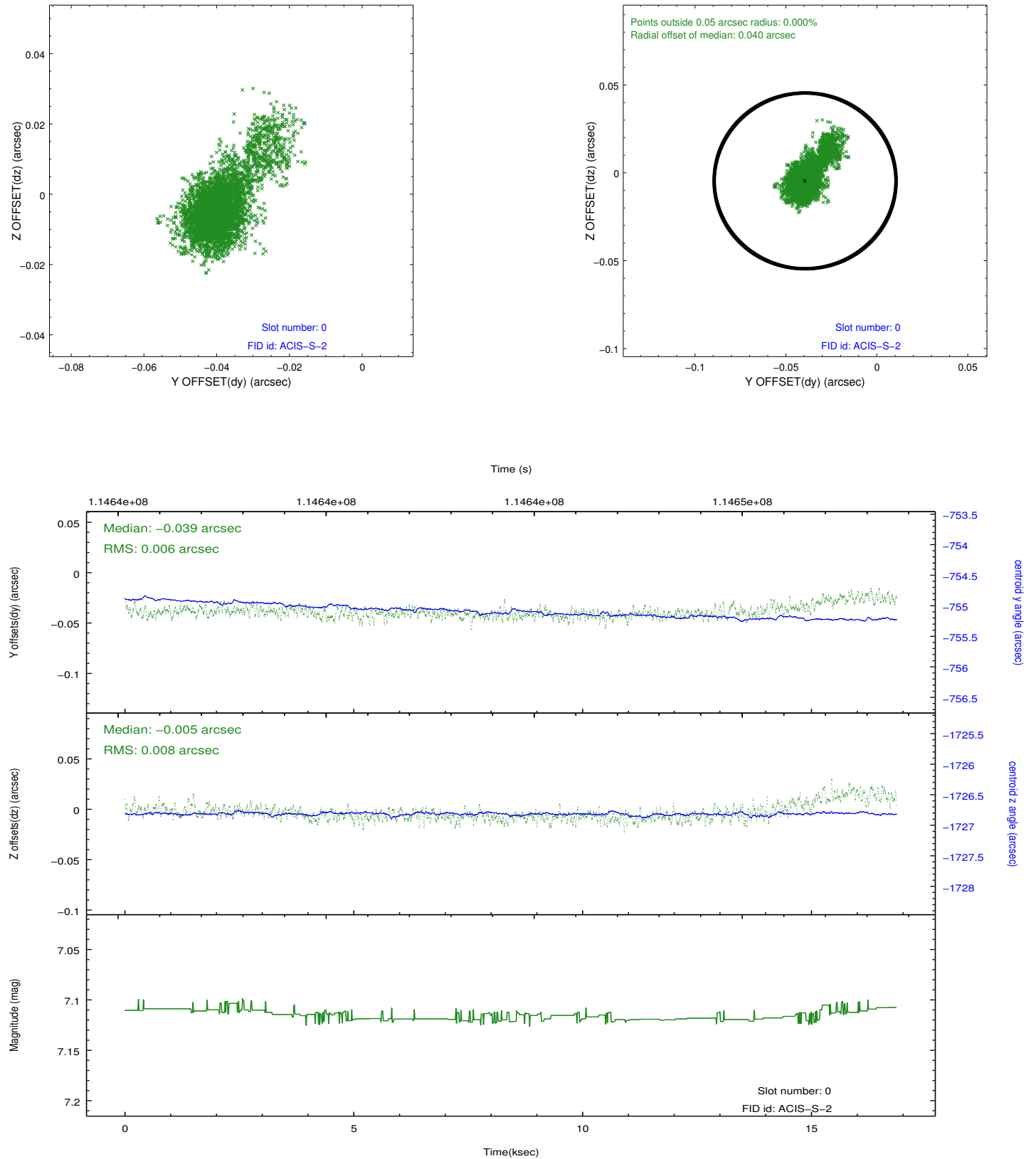


## 2.4.5 Slot 7

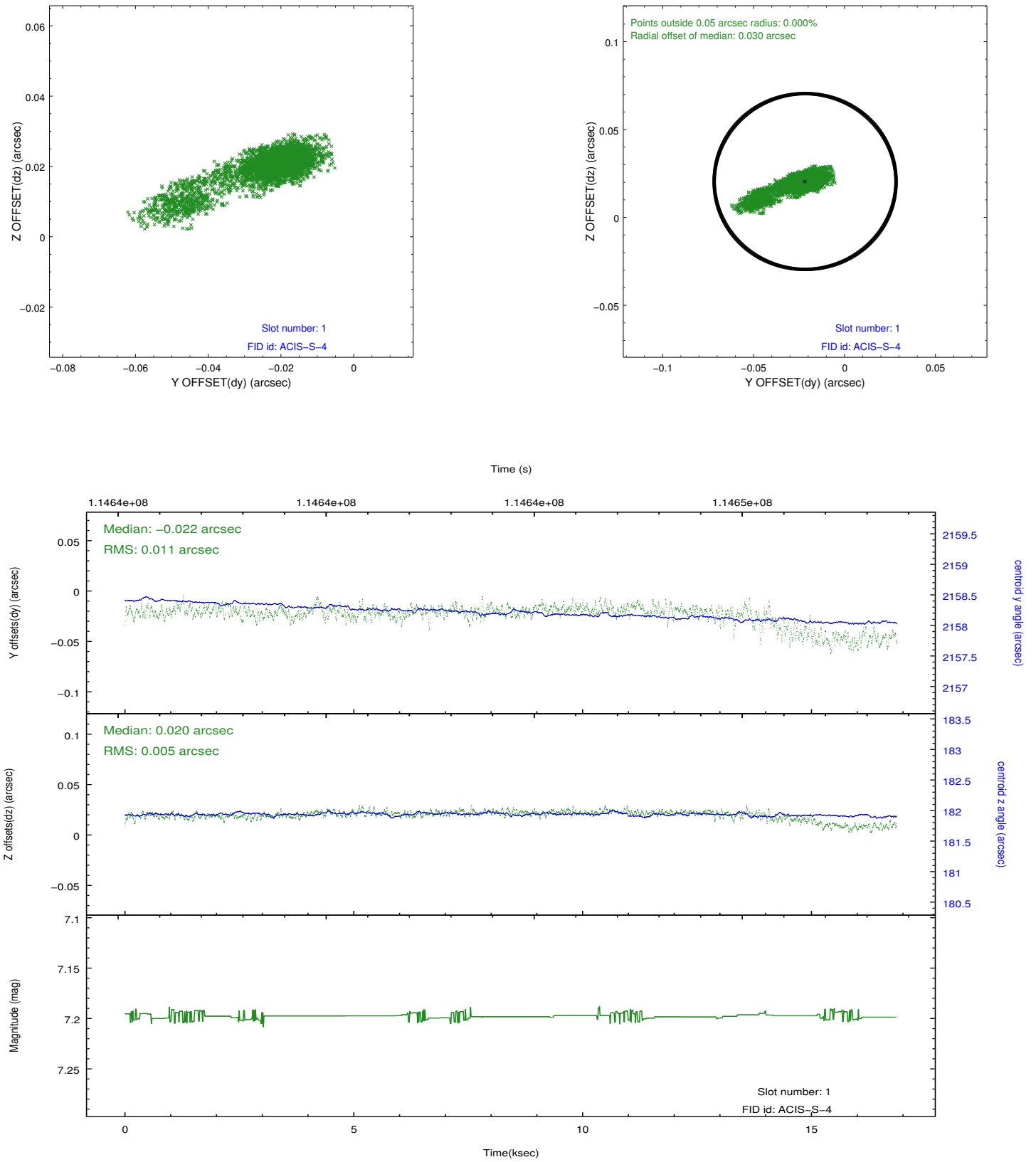


## 2.5 FID Slots

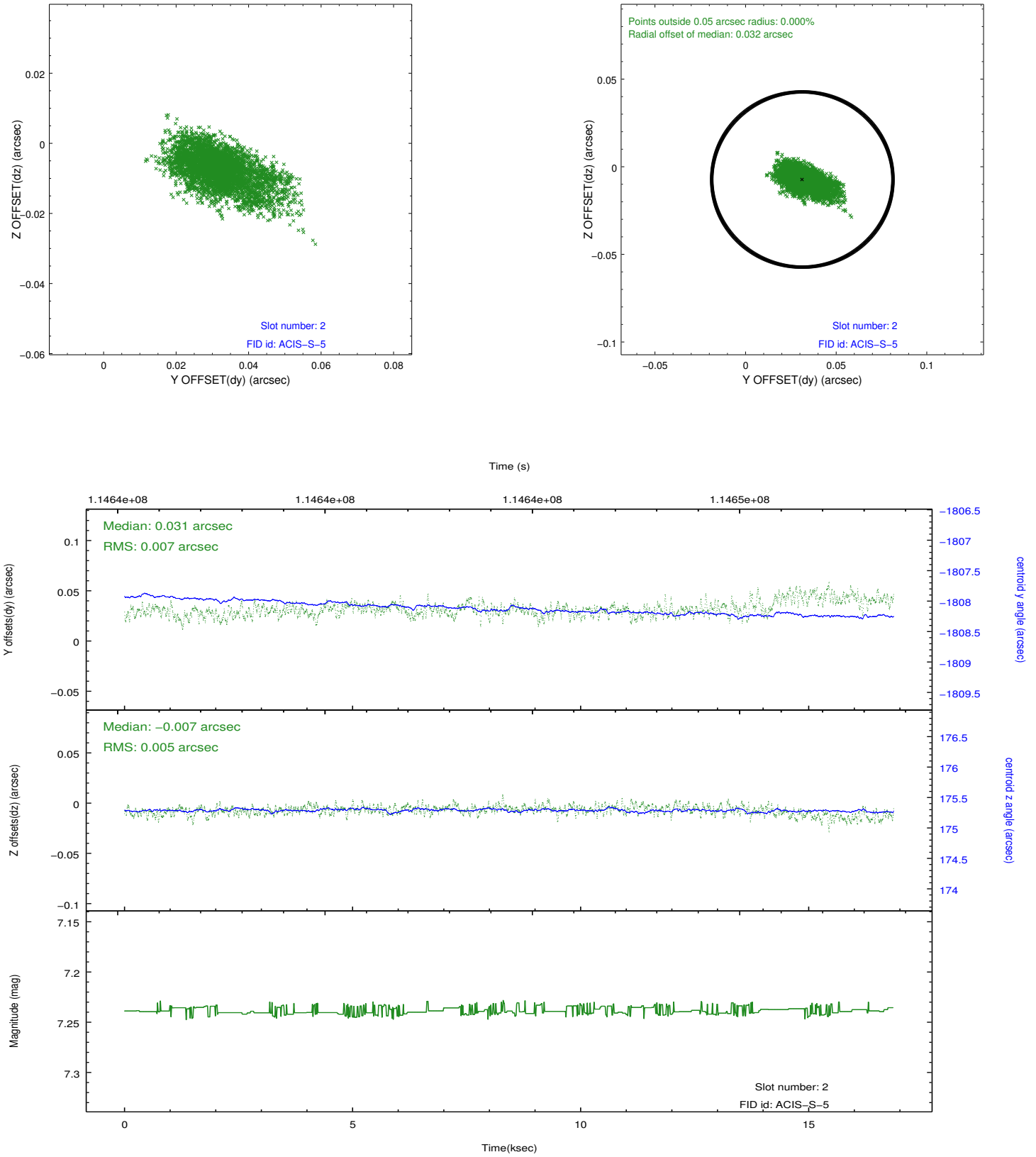
### 2.5.1 Slot 0



## 2.5.2 Slot 1



### 2.5.3 Slot 2



## A Summary

### A.1 Status

V&V Scientist	Joy Nichols
V&V Date (YYYY-MM-DD)	2012.09.25
V&V Edition	1
V&V Disposition and Status	OK
V&V Charge Time	16.55

### A.2 Comments