

V&V Reference Report

L2 ASCDS Version : 8.4.5

Observation 2386 - L2 Version 5
Chandra X-Ray Center

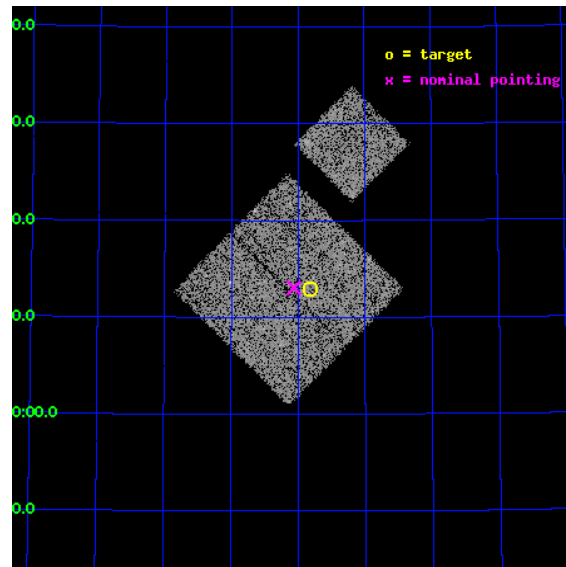
L2 Processing Date : Sep 3 2012

Contents

1	Front	2
2	OBI	3
2.1	OBI	3
2.1.1	Images	3
2.1.2	Bias	3
2.1.3	Parameters	4
2.1.4	Events	4
2.2	Compared Parameters	5
2.3	Aspect	6
2.4	Star Slots	9
2.4.1	Slot 3	9
2.4.2	Slot 4	10
2.4.3	Slot 5	11
2.4.4	Slot 6	12
2.4.5	Slot 7	13
2.5	FID Slots	14
2.5.1	Slot 0	14
2.5.2	Slot 1	15
2.5.3	Slot 2	16
A	Summary	17
A.1	Status	17
A.2	Comments	17

1 Front

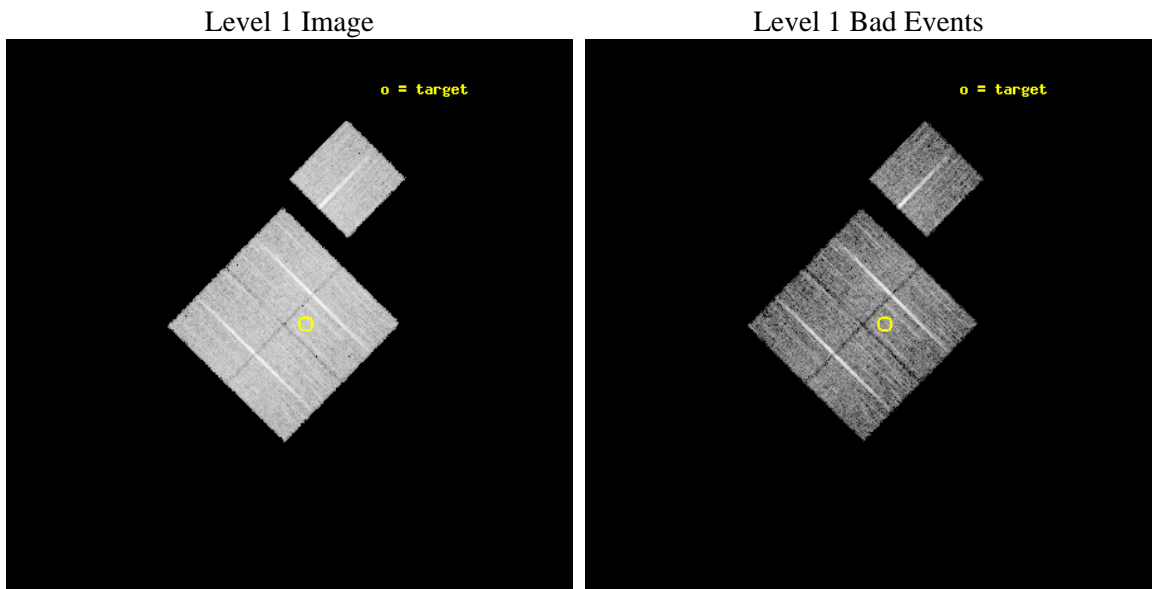
seq_num	900030	Sequence number
obs_id	2386	Observation id
title	HDF NORTH SURVEY	Proposal title
observer	Professor Gordon Garmire	Principal investigator
object	HDF NORTH	Source name
dtcycle	0	
cycle	P	events from which exps? Prim/Second/Both
ra_targ	189.205833	Observer's specified target RA [deg]
dec_targ	62.21611	Observer's specified target Dec [deg]
ra_nom	189.26611712238	Nominal RA [deg]
dec_nom	62.217594173814	Nominal Dec [deg]
roll_nom	44.499051688451	Nominal Roll [deg]
revision	5	Processing version of data
ontime	9969.5999808311	Sum of GTIs [s]
livetime	9839.3398175689	Livetime [s]
ontime0	9969.5999808311	Sum of GTIs [s]
ontime1	9969.5999808311	Sum of GTIs [s]
ontime2	9969.5999808311	Sum of GTIs [s]
ontime3	9969.5999808311	Sum of GTIs [s]
ontime6	9969.5999808311	Sum of GTIs [s]
l2events	31016	Number of level 2 events



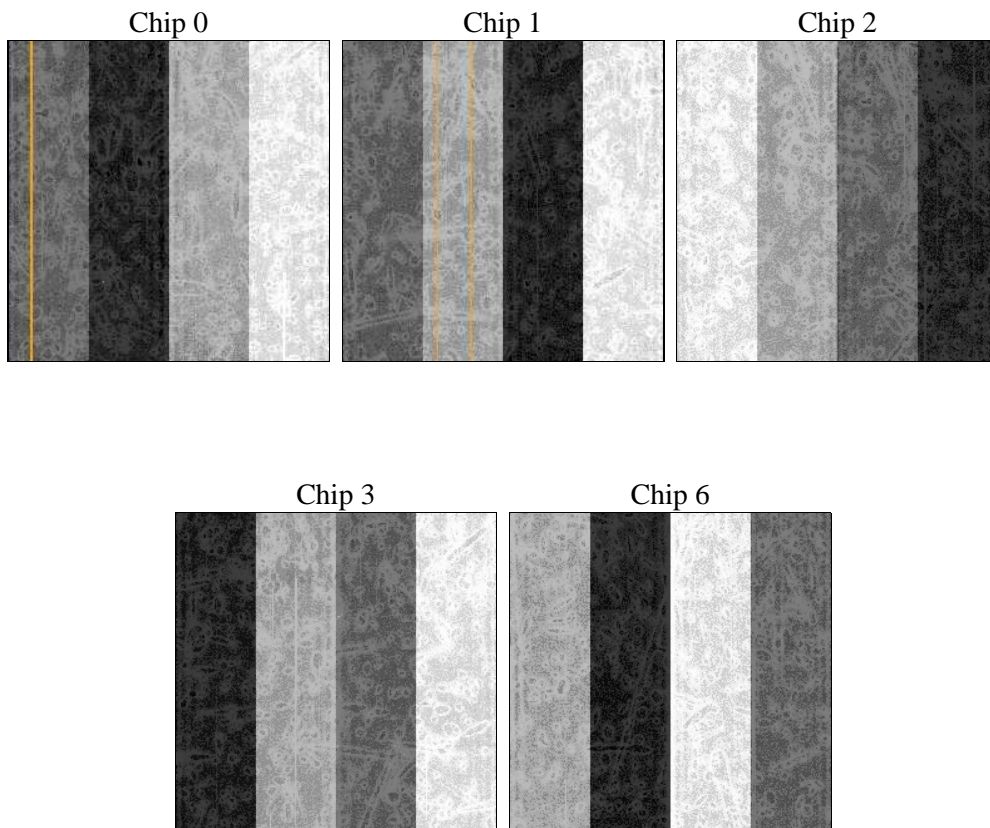
2 OBI

2.1 OBI

2.1.1 Images



2.1.2 Bias



2.1.3 Parameters

obi_num	0	Obi number	sched_exp_time	9859.805000	[s] Scheduled observation exposure time
ascdsver	8.4.5	Processing system revision	ontime	9969.5999808311	Sum of GTIs [s]
caldsver	4.5.1.1	 	ontime0	9969.5999808311	Sum of GTIs [s]
date	2012-09-03T18:11:10	Date and time of file creation	ontime1	9969.5999808311	Sum of GTIs [s]
revision	5	Processing version of data	ontime2	9969.5999808311	Sum of GTIs [s]
			ontime3	9969.5999808311	Sum of GTIs [s]
			ontime6	9969.5999808311	Sum of GTIs [s]
			l1events	304578	Number of level 1 events

2.1.4 Events

	ccd 0	ccd 1	ccd 2	ccd 3	ccd 6
level 1 events	57501	59026	63473	62810	61768
rejected events	50065	51448	56458	55738	54700
rejected %	87%	87%	88%	88%	88%

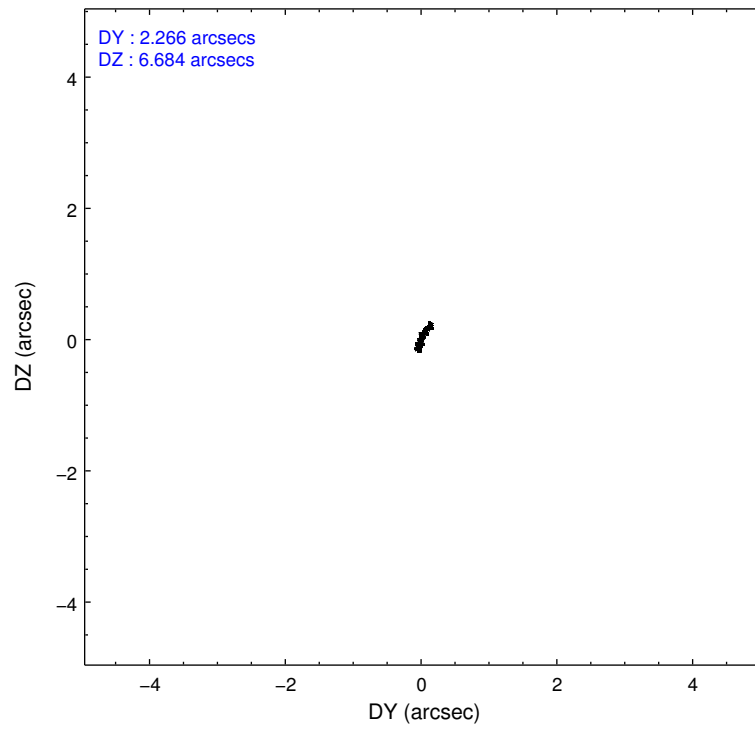
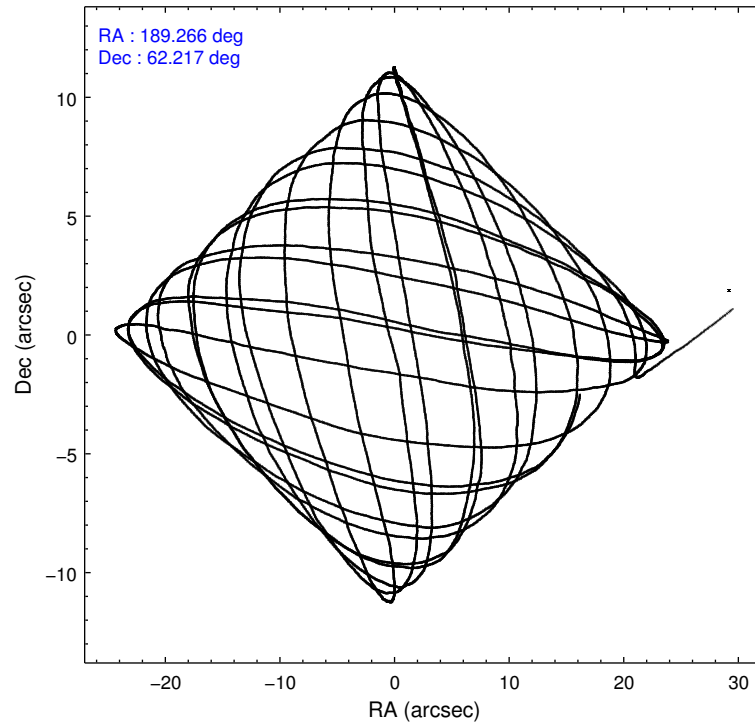
	ccd 0	ccd 1	ccd 2	ccd 3	ccd 6
grade 0 events	3309	3080	3166	2996	2848
	5%	5%	4%	4%	4%
grade 1 events	27	23	34	24	32
	0%	0%	0%	0%	0%
grade 2 events	1535	1571	1414	1382	1373
	2%	2%	2%	2%	2%
grade 3 events	669	772	615	700	700
	1%	1%	0%	1%	1%
grade 4 events	674	772	644	688	719
	1%	1%	1%	1%	1%
grade 5 events	2135	2342	2079	2352	2542
	3%	3%	3%	3%	4%
grade 6 events	1254	1385	1182	1315	1431
	2%	2%	1%	2%	2%
grade 7 events	47898	49081	54339	53353	52123
	83%	83%	85%	84%	84%

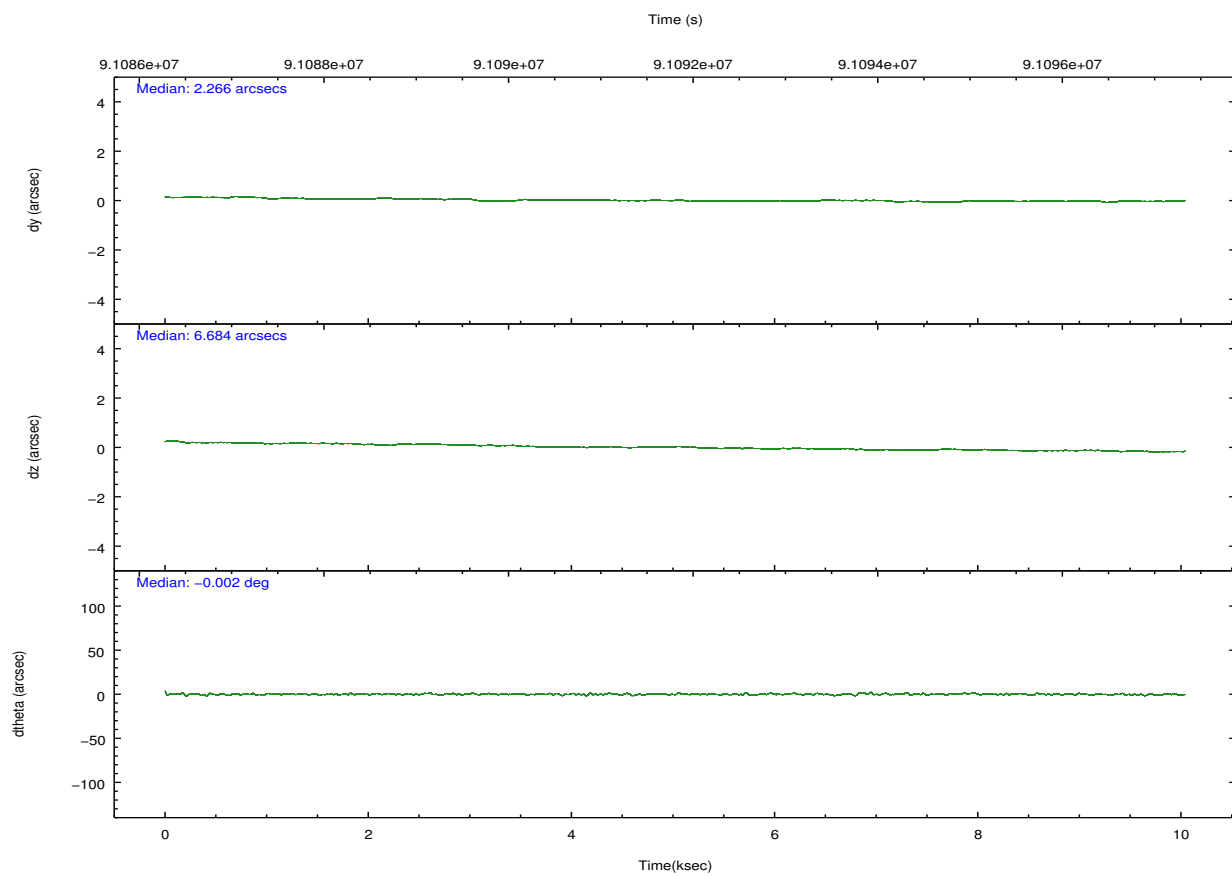
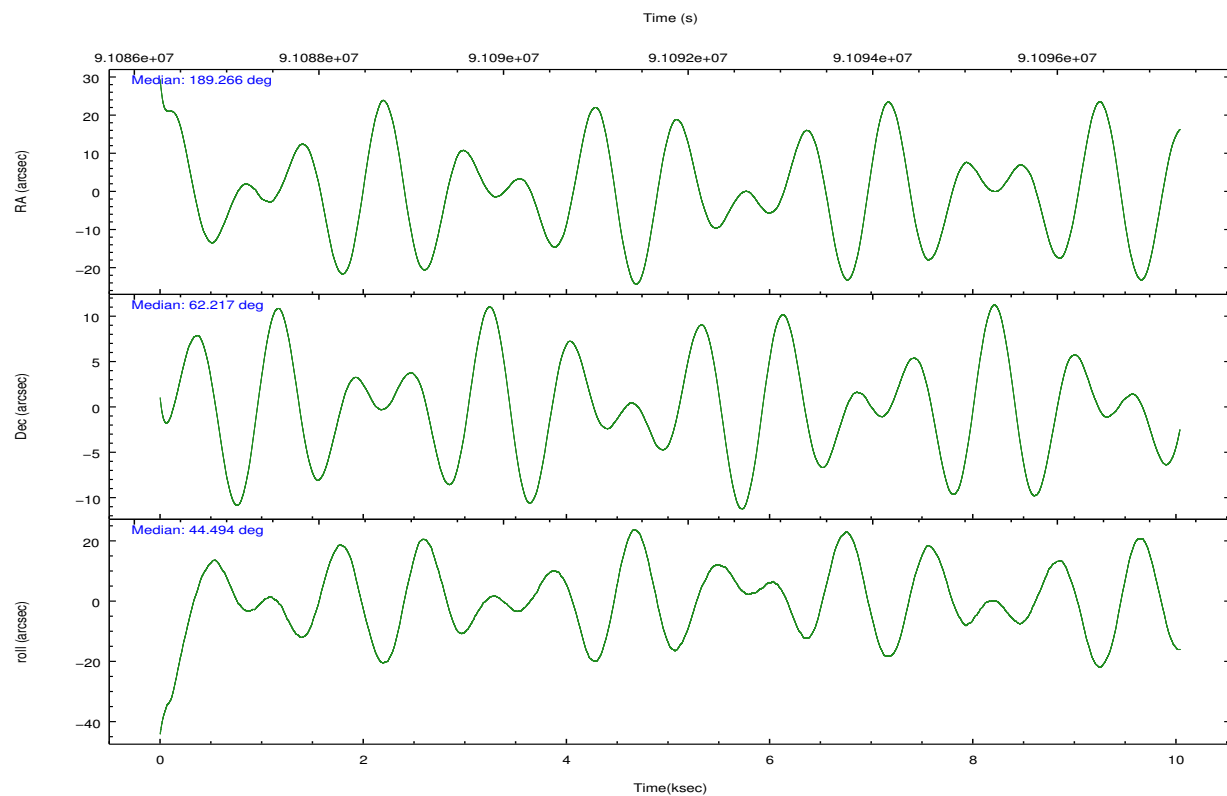
2.2 Compared Parameters

Parameter	Planned	Actual
Instrument	ACIS	ACIS
Detector	ACIS-01236	ACIS-01236
Grating	NONE	NONE
Data mode	FAINT	FAINT
Observation mode	POINTING	POINTING
[deg] Pointing RA	189.250189	189.2661171223791
[deg] Pointing Dec	62.191111	62.21759417381414
[deg] Pointing Roll	44.304460	44.49905168845055
[mm] SIM focus pos	-0.782348	-0.7809083437167272
[mm] SIM defocus	0	0.001439871863259334
[mm] SIM translation stage pos	-233.592463	-233.5874344608287
[mm] SIM translation stage offset	0	-0.005018542100998502
[s] Observation start time (MET)	91086964.184000	91085988.53832901
Observation start date	2000-11-20T05:55:00	2000-11-20T05:39:48
[s] Observation end time (MET)	91096823.184000	91097682.763776
Observation end date	2000-11-20T08:39:19	2000-11-20T08:54:42
Read mode	TIMED	TIMED

Parameter	Planned	Actual
Obspar format version number	7	7
Obspar file type	PREDICTED	ACTUAL
Obspar update status	NONE	UPDATED
Number of optional ACIS chips dropped	0	0
On-chip summing requested	N	N
Subarray requested	NONE	NONE
Alternating exposures requested	N	N
[s] Primary exposure time	0.000000	3.1

2.3 Aspect



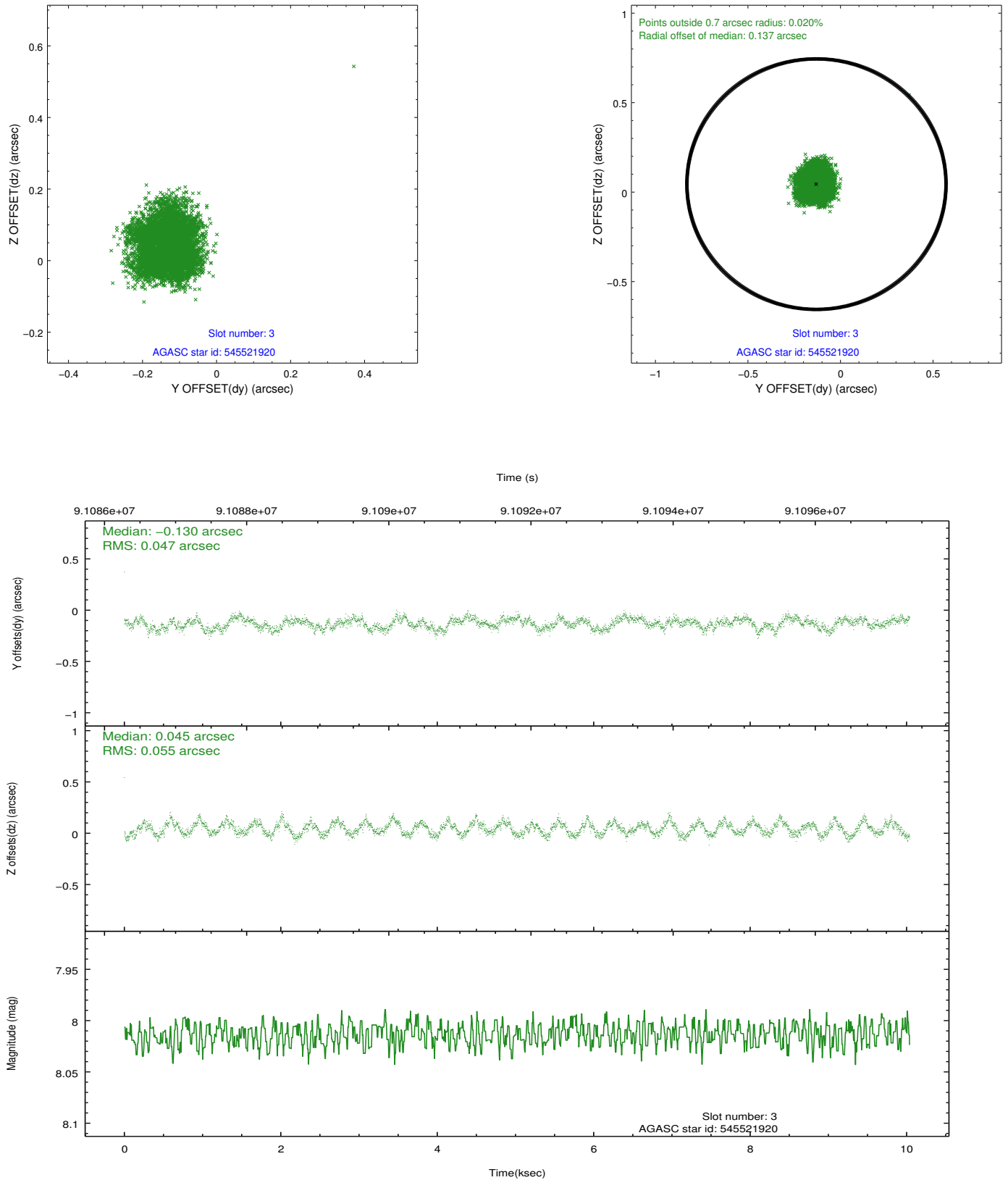


Slot Statistics

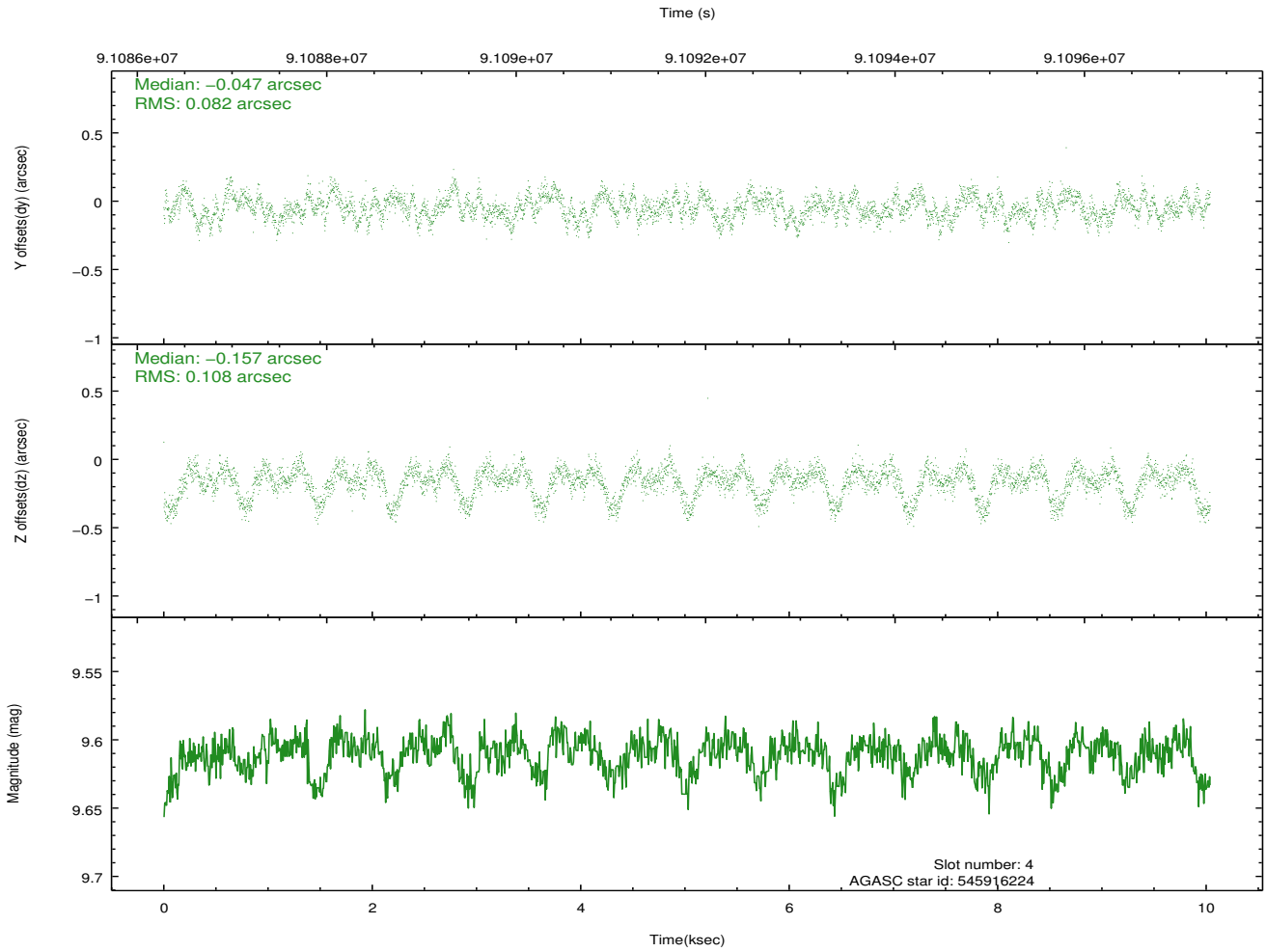
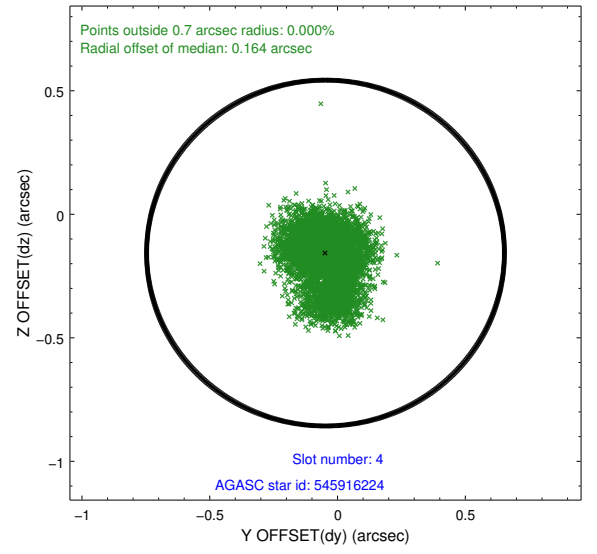
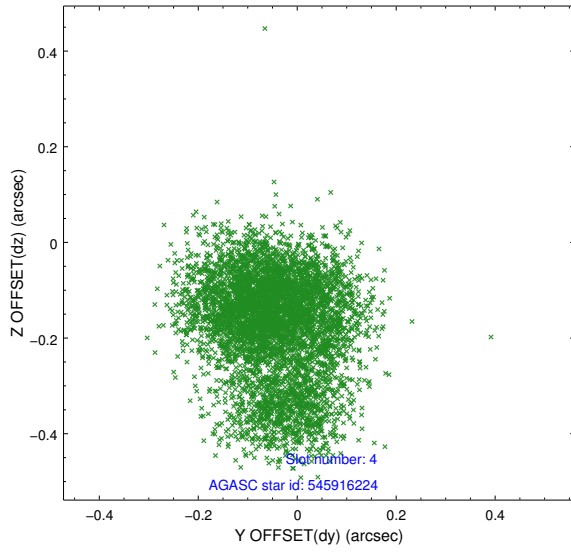
slot	status	id	mag	n_pts	med_dy	med_dz	dr1	dr2	ra	dec	mean_y	mean_z
0	FID	ACIS-I-2	7.16	2449	-0.032	-0.056	0.009	0.016	0.000000	0.000000	-756.68	-836.50
1	FID	ACIS-I-4	7.18	2447	-0.042	0.042	0.006	0.012	0.000000	0.000000	2157.13	1069.51
2	FID	ACIS-I-5	7.23	2449	-0.026	0.083	0.009	0.015	0.000000	0.000000	-1809.82	1068.00
3	GUIDE	545521920	8.01	4894	-0.130	0.045	0.077	0.116	190.203465	62.042567	786.25	-1497.29
4	GUIDE	545916224	9.61	4895	-0.047	-0.157	0.145	0.240	188.817359	62.651242	646.53	1687.27
5	GUIDE	545523632	10.04	4891	0.245	0.072	0.123	0.194	188.952319	61.550910	-1973.96	-1290.90
6	GUIDE	545523592	10.23	4893	0.196	0.235	0.156	0.246	188.664324	61.541019	-2350.73	-969.30
7	GUIDE	545916288	10.10	4895	-0.299	-0.202	0.337	0.490	188.813969	62.949161	1395.98	2453.86

2.4 Star Slots

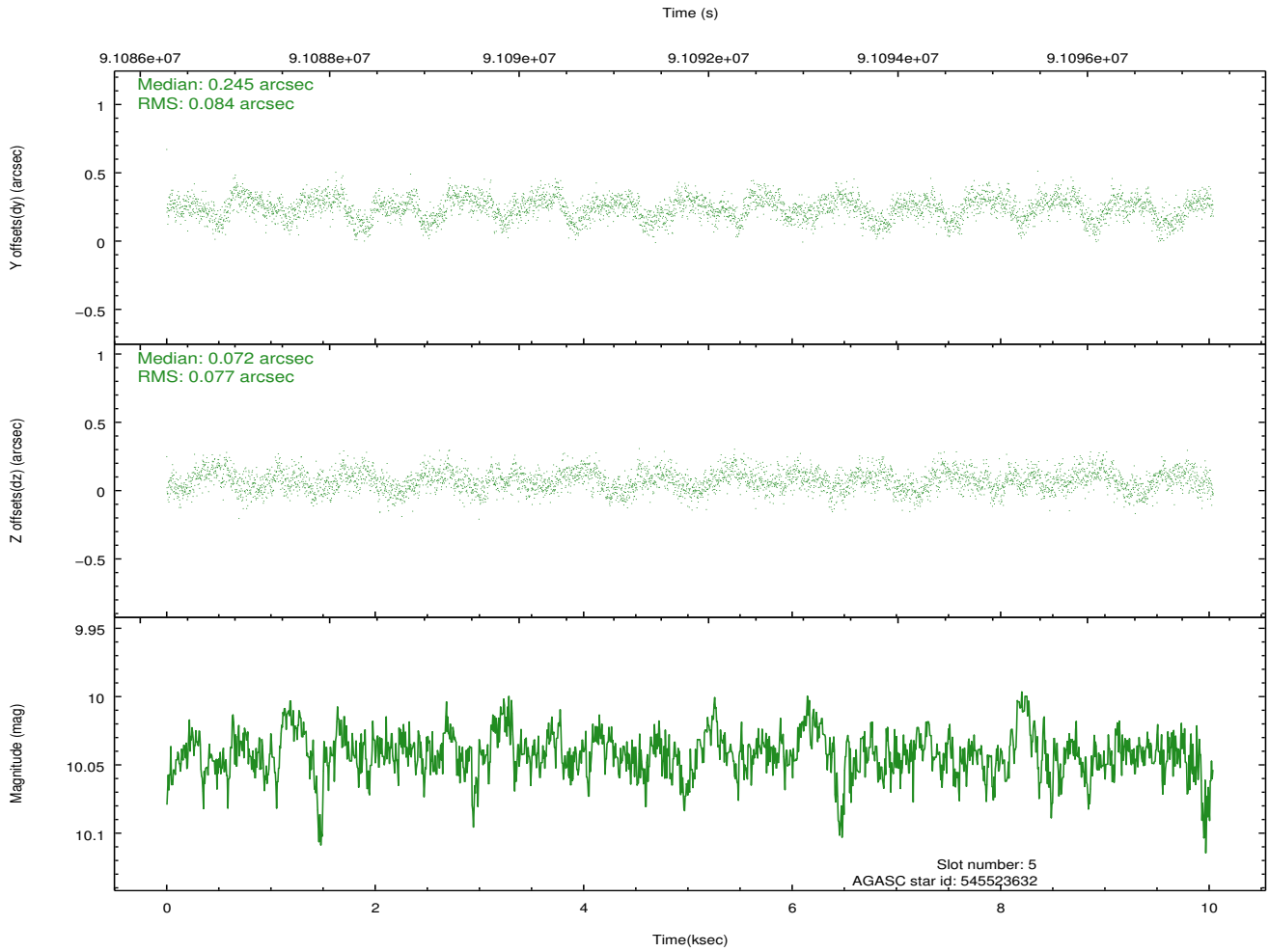
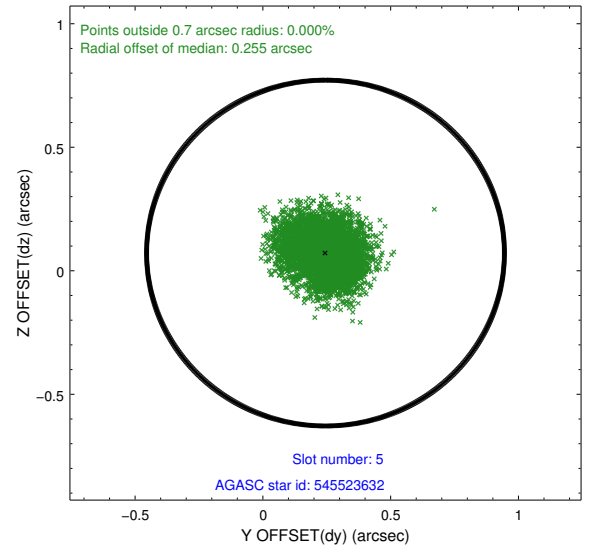
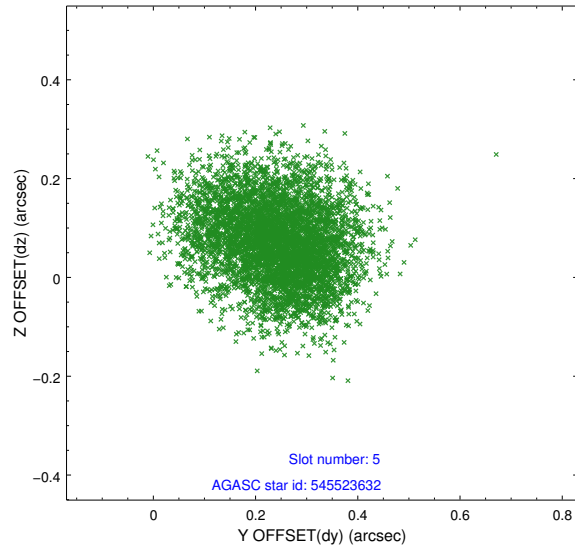
2.4.1 Slot 3



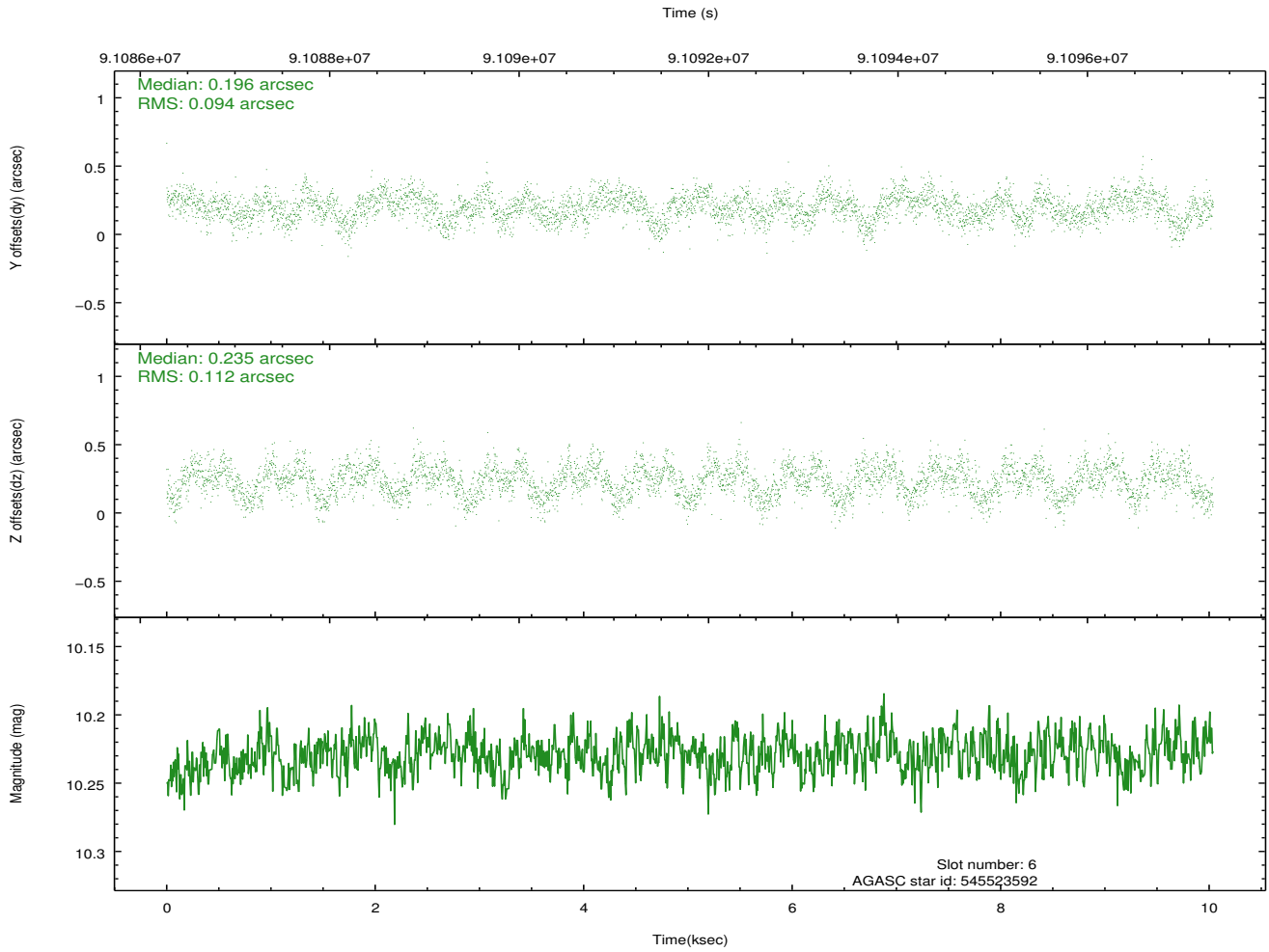
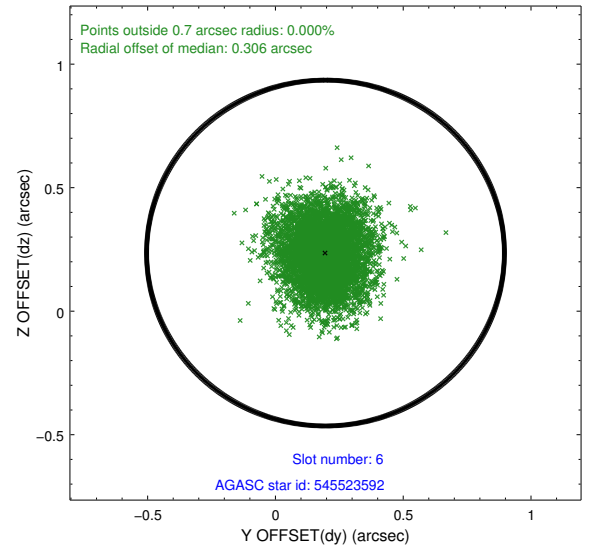
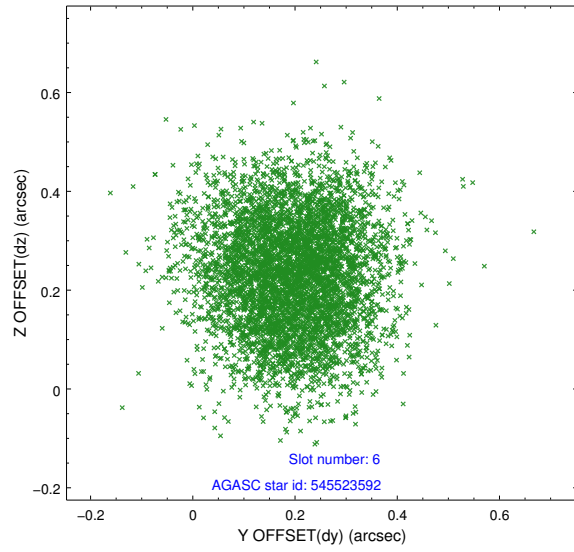
2.4.2 Slot 4



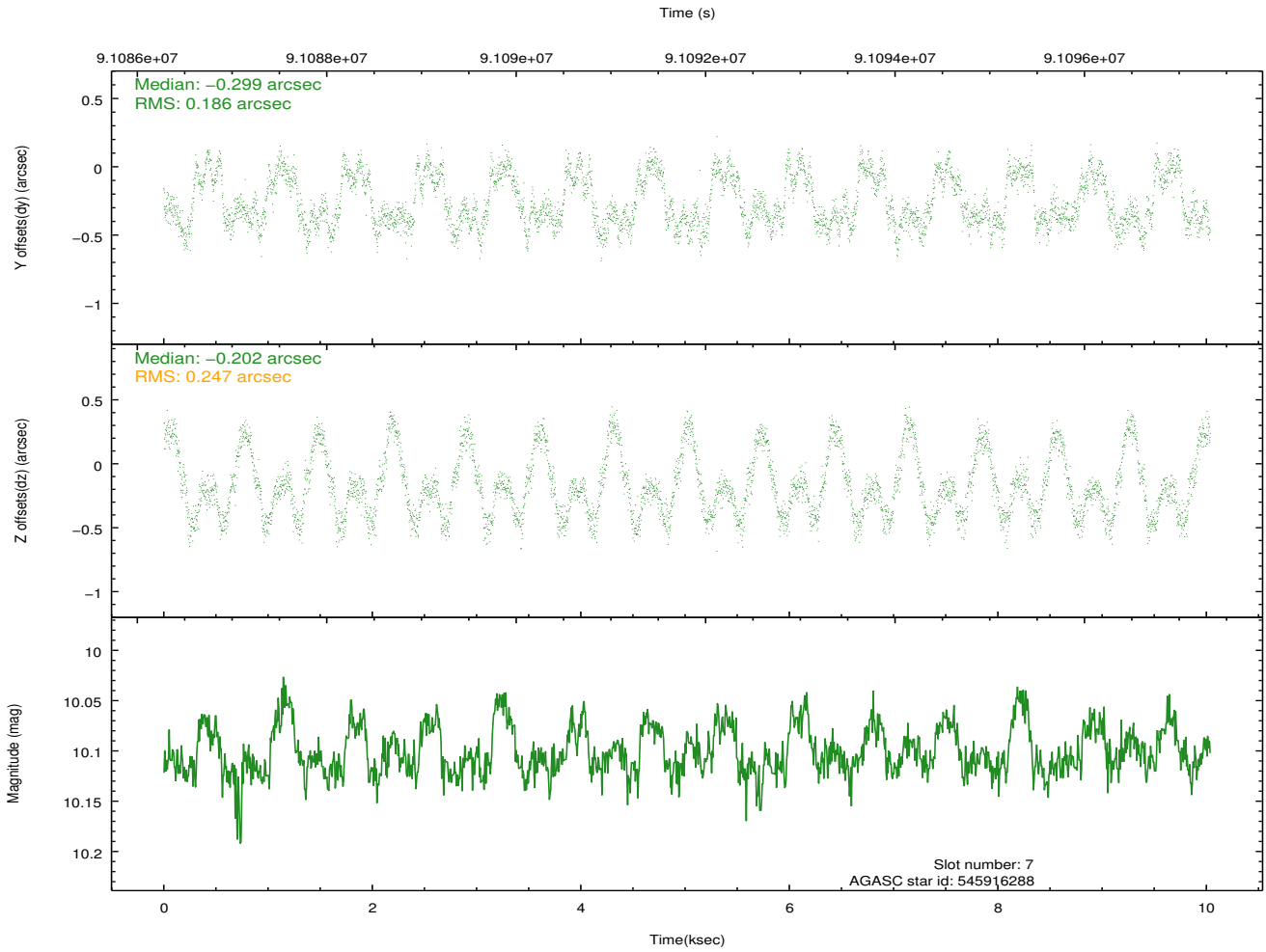
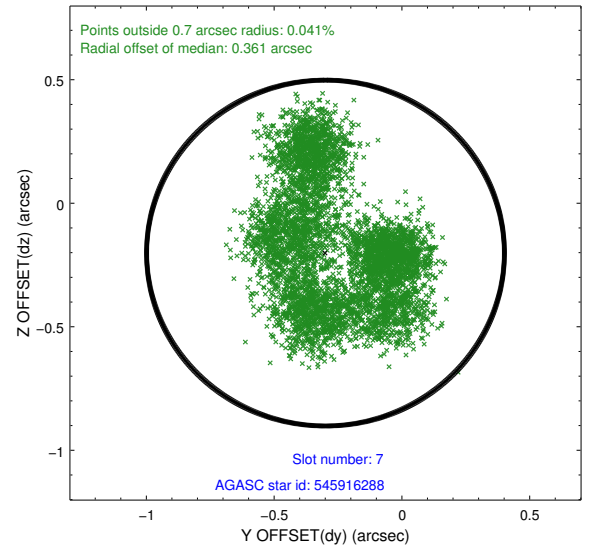
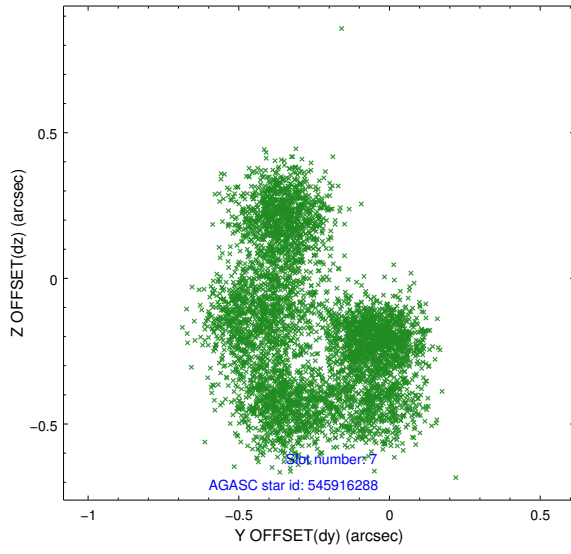
2.4.3 Slot 5



2.4.4 Slot 6

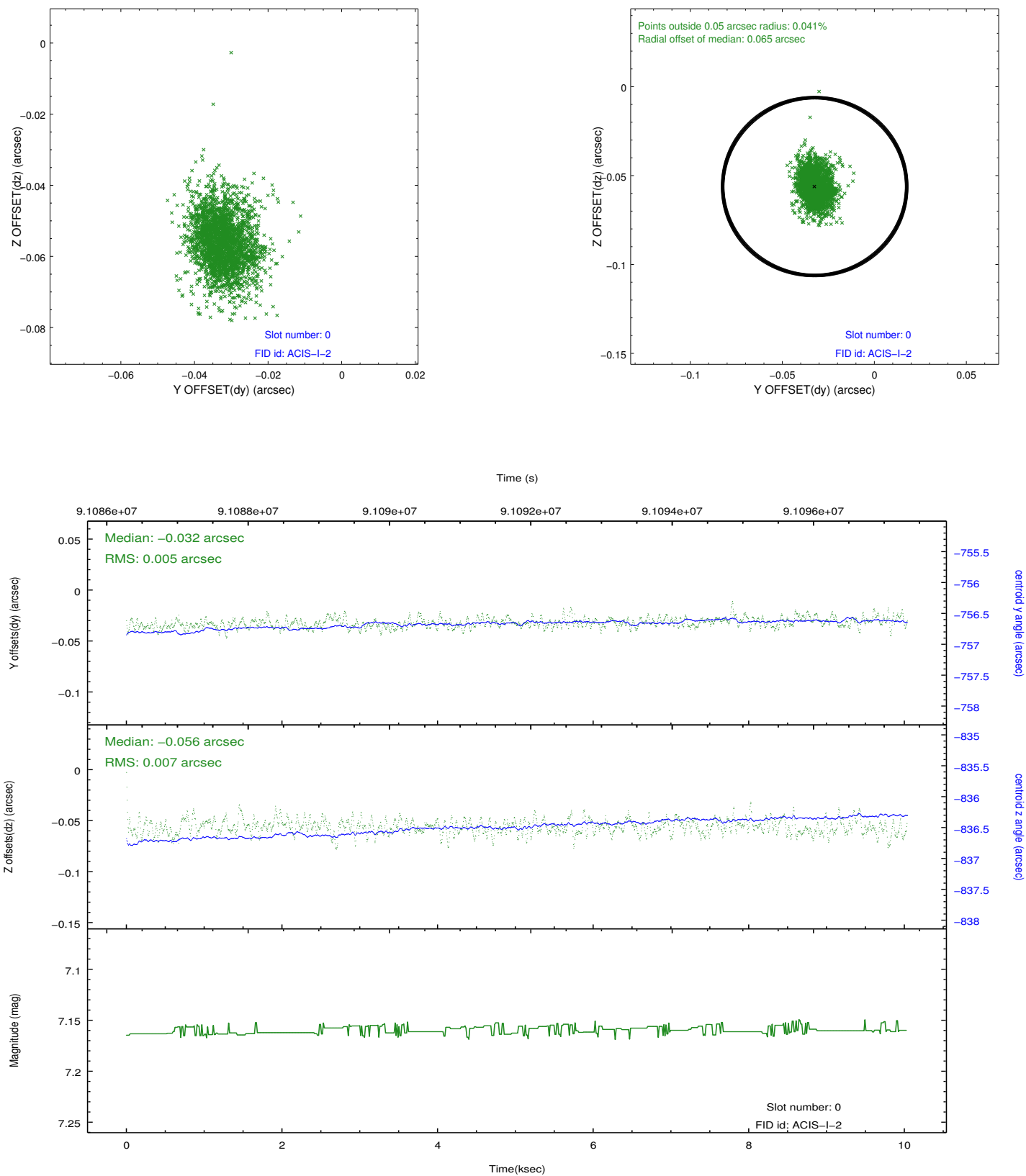


2.4.5 Slot 7

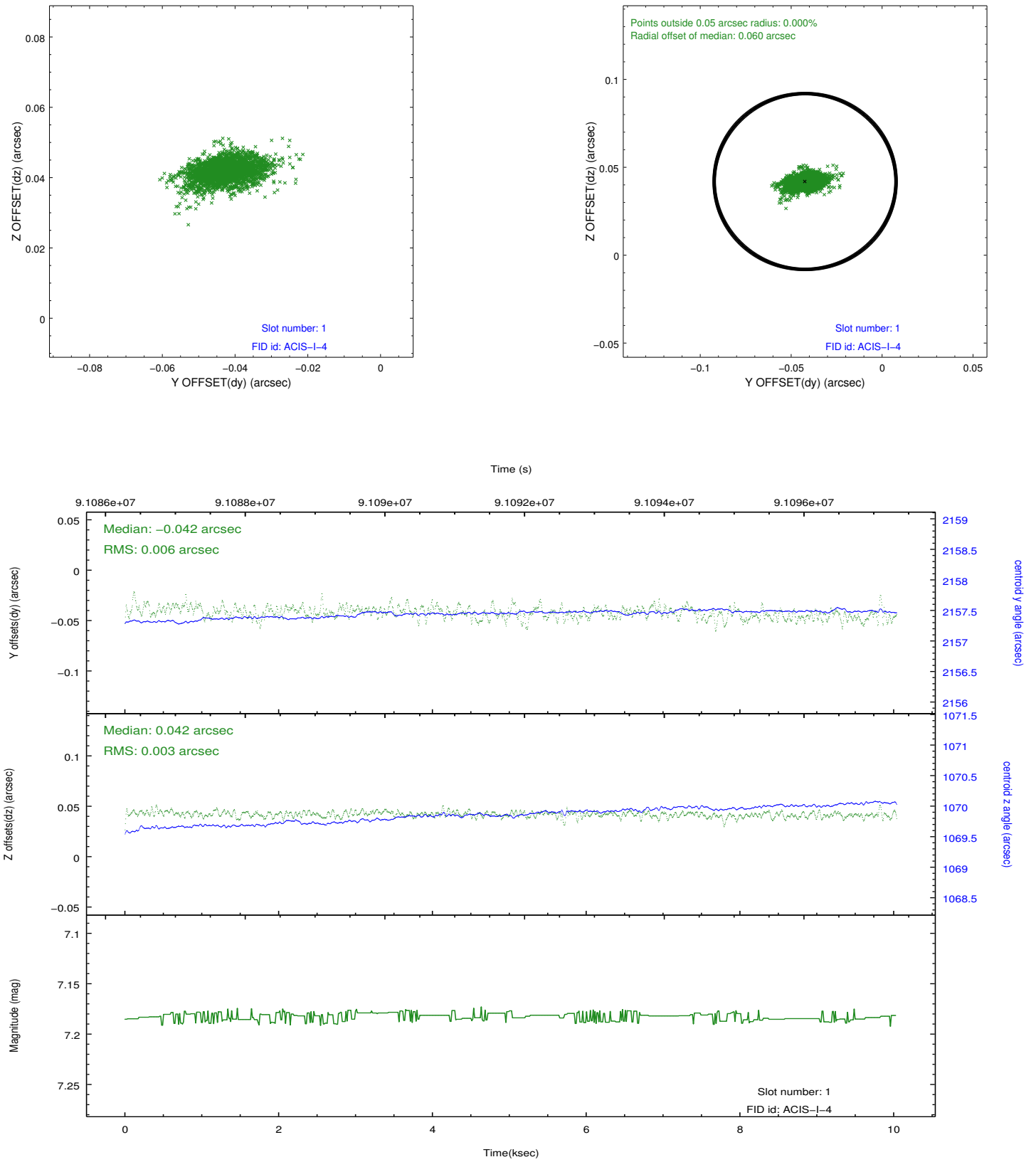


2.5 FID Slots

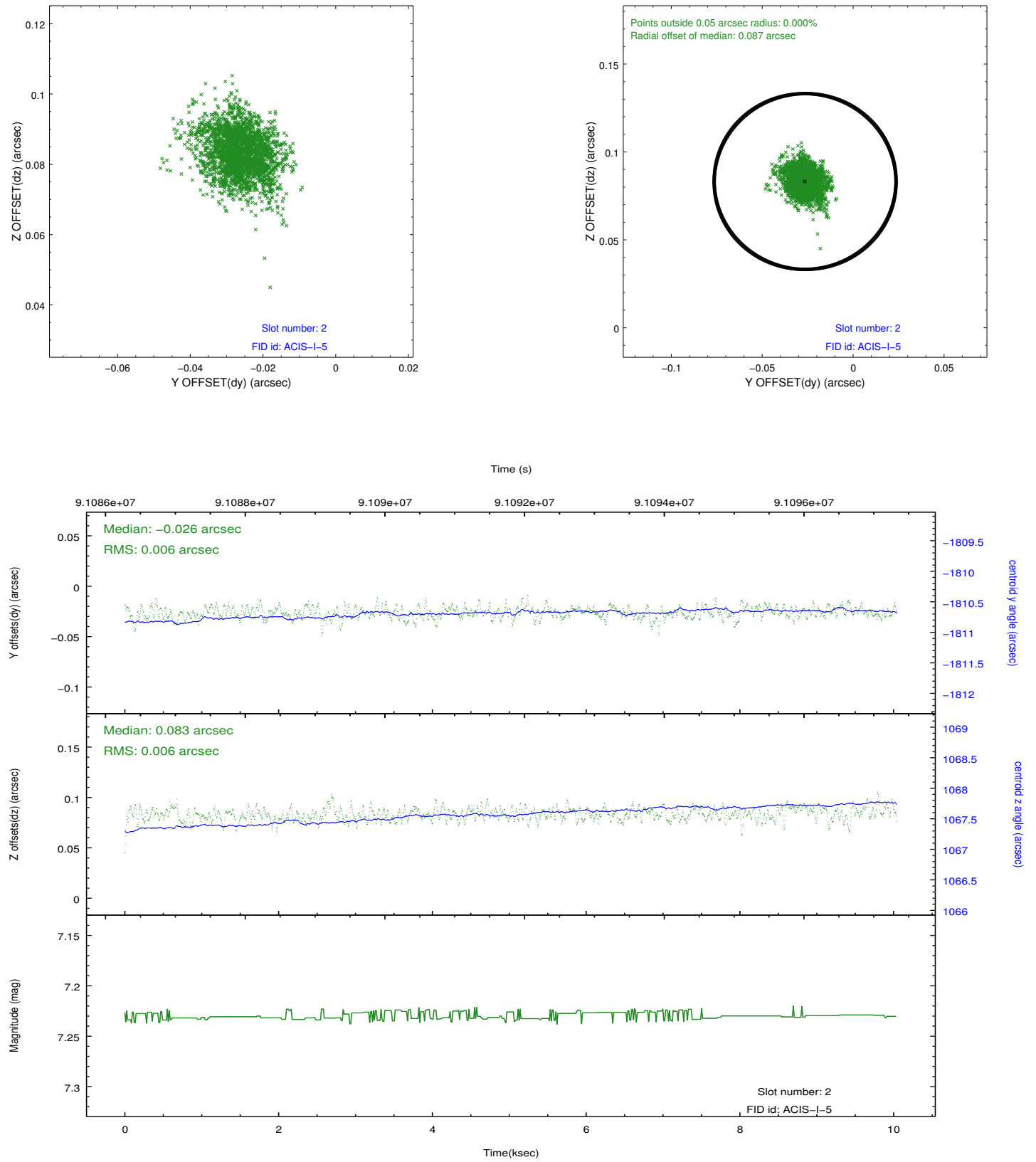
2.5.1 Slot 0



2.5.2 Slot 1



2.5.3 Slot 2



A Summary

A.1 Status

V&V Scientist	Jen Lauer
V&V Date (YYYY-MM-DD)	2012.09.11
V&V Edition	1
V&V Disposition and Status	OK
V&V Charge Time	10

A.2 Comments

Charge time for this ObsId remains at previous value of 10 ks although with the current processing the charge time would have been 9.97 ksec.