

V&V Reference Report

L2 ASCDS Version : 7.6.10

Observation 2336 - L2 Version 001
Chandra X-Ray Center

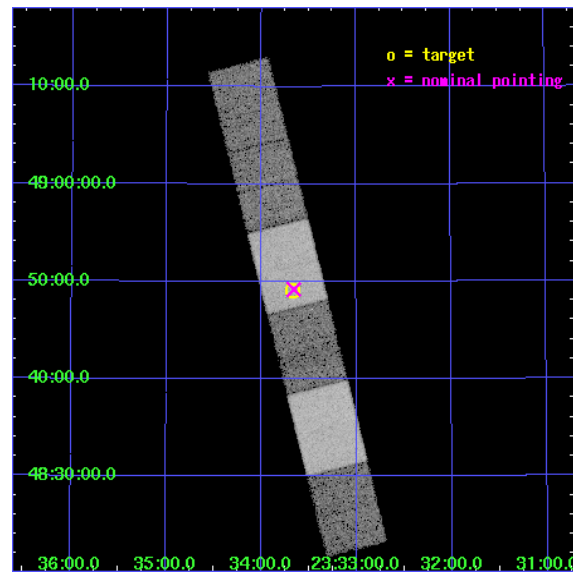
L2 Processing Date : Jun 16 2007

Contents

1	Front	2
2	OBI	3
2.1	OBI	3
2.1.1	Images	3
2.1.2	Bias	3
2.1.3	Parameters	4
2.1.4	Events	4
2.2	Compared Parameters	5
2.3	Aspect	6
2.4	Star Slots	9
2.4.1	Slot 3	9
2.4.2	Slot 4	10
2.4.3	Slot 5	11
2.4.4	Slot 6	12
2.5	FID Slots	13
2.5.1	Slot 0	13
2.5.2	Slot 1	14
2.5.3	Slot 2	15
3	Gratings	16
3.1	HEG Arm	16
3.2	MEG Arm	18
A	Summary	20
A.1	Status	20
A.2	Comments	20

1 Front

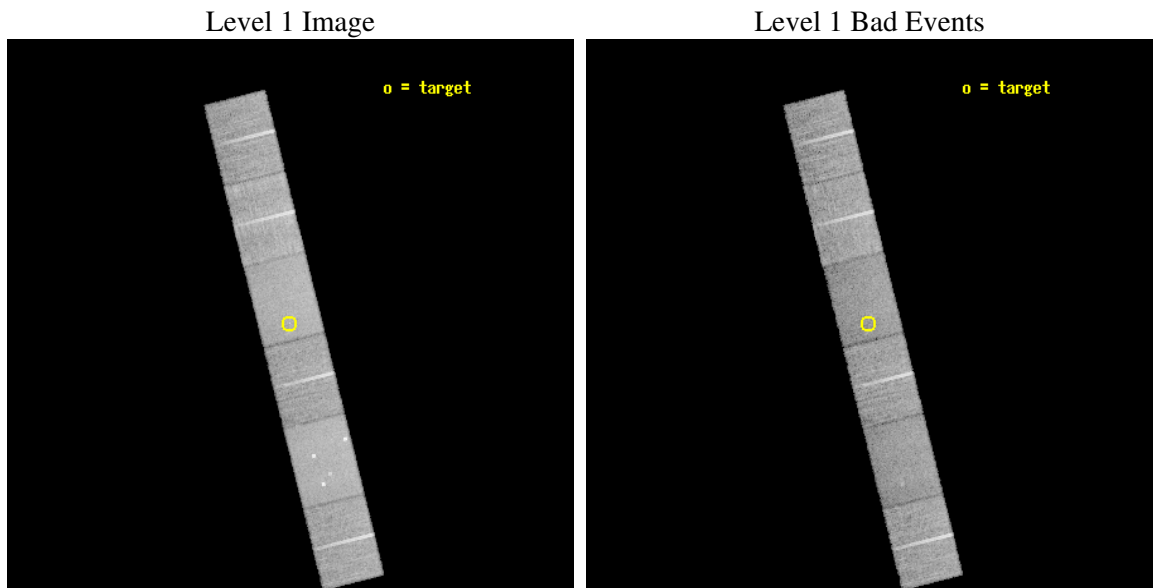
seq_num	300053
obs_id	2336
title	THE NATURE OF CLASSICAL SYMBIOTIC OUTBURSTS
observer	Prof Phil Charles
object	Z ANDROMEDAE
dtcycle	0
cycle	P
ra_targ	353.416667
dec_targ	48.818333
ra_nom	353.41460329584
dec_nom	48.820065124693
roll_nom	255.98800920573
revision	2
ontime	19225.0
livetime	18914.499574977
ontime4	19222.459009841
ontime5	19225.0
ontime6	19225.0
ontime7	19225.0
ontime8	19222.459009841
ontime9	19225.0
l2events	145271



2 OBI

2.1 OBI

2.1.1 Images

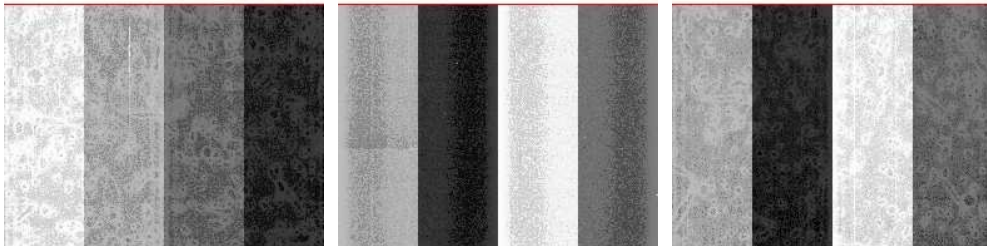


2.1.2 Bias

Chip 4

Chip 5

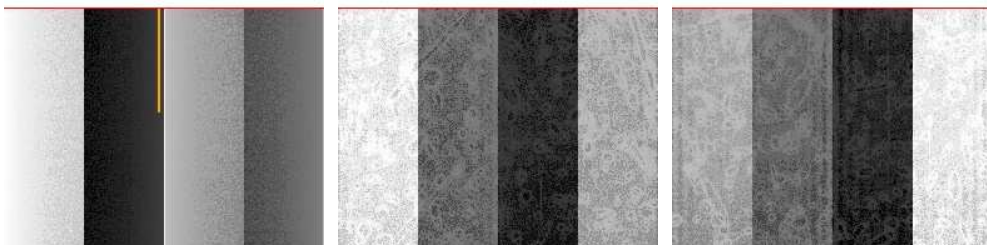
Chip 6



Chip 7

Chip 8

Chip 9



2.1.3 Parameters

obi_num	0
ascdsver	7.6.10
caldsver	3.4.0
date	2007-06-16T11:50:57
revision	2

sched_exp_time	19100.000000
ontime	19225.0
ontime4	19222.459009841
ontime5	19225.0
ontime6	19225.0
ontime7	19225.0
ontime8	19222.459009841
ontime9	19225.0
l1events	668641

2.1.4 Events

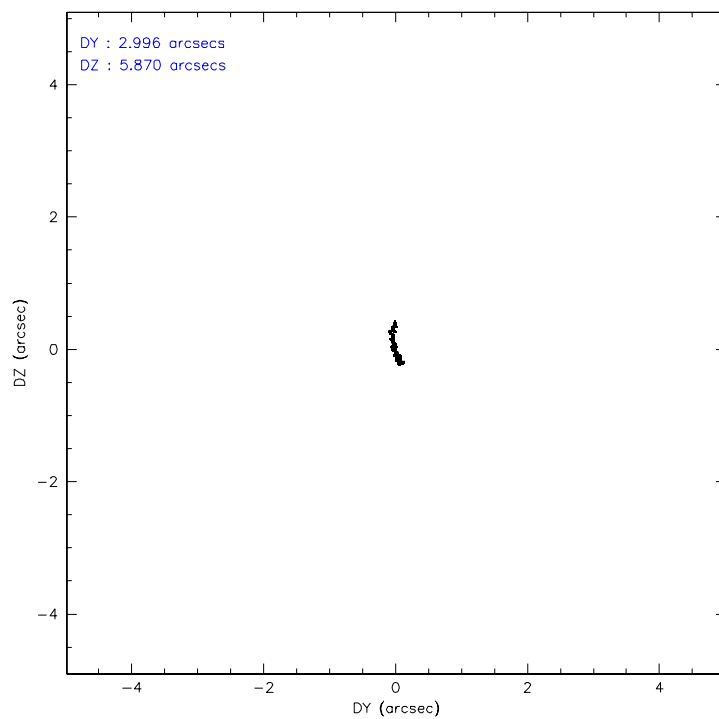
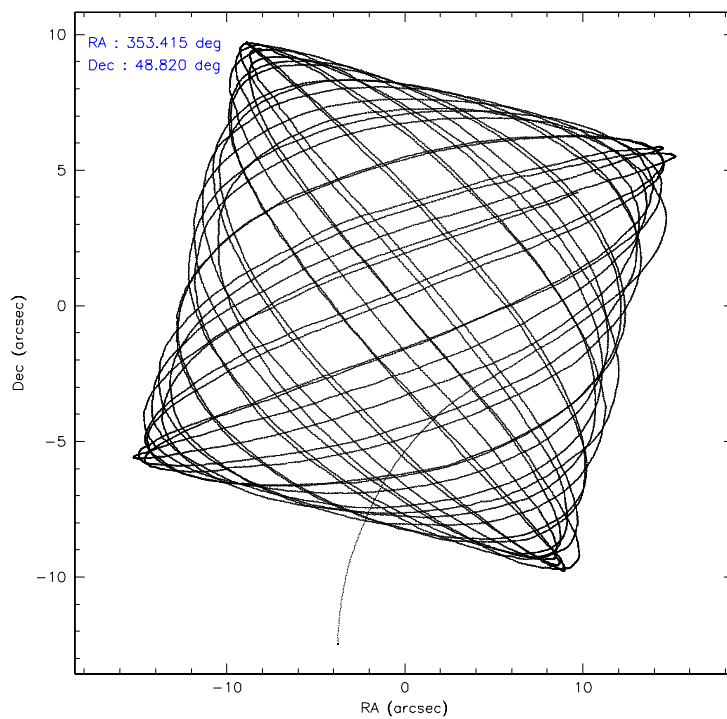
	ccd 4	ccd 5	ccd 6	ccd 7	ccd 8	ccd 9
level 1 events	104408	130765	96552	118285	123685	94946
rejected events	91673	71070	84833	69037	95996	82767
rejected %	87%	54%	87%	58%	77%	87%

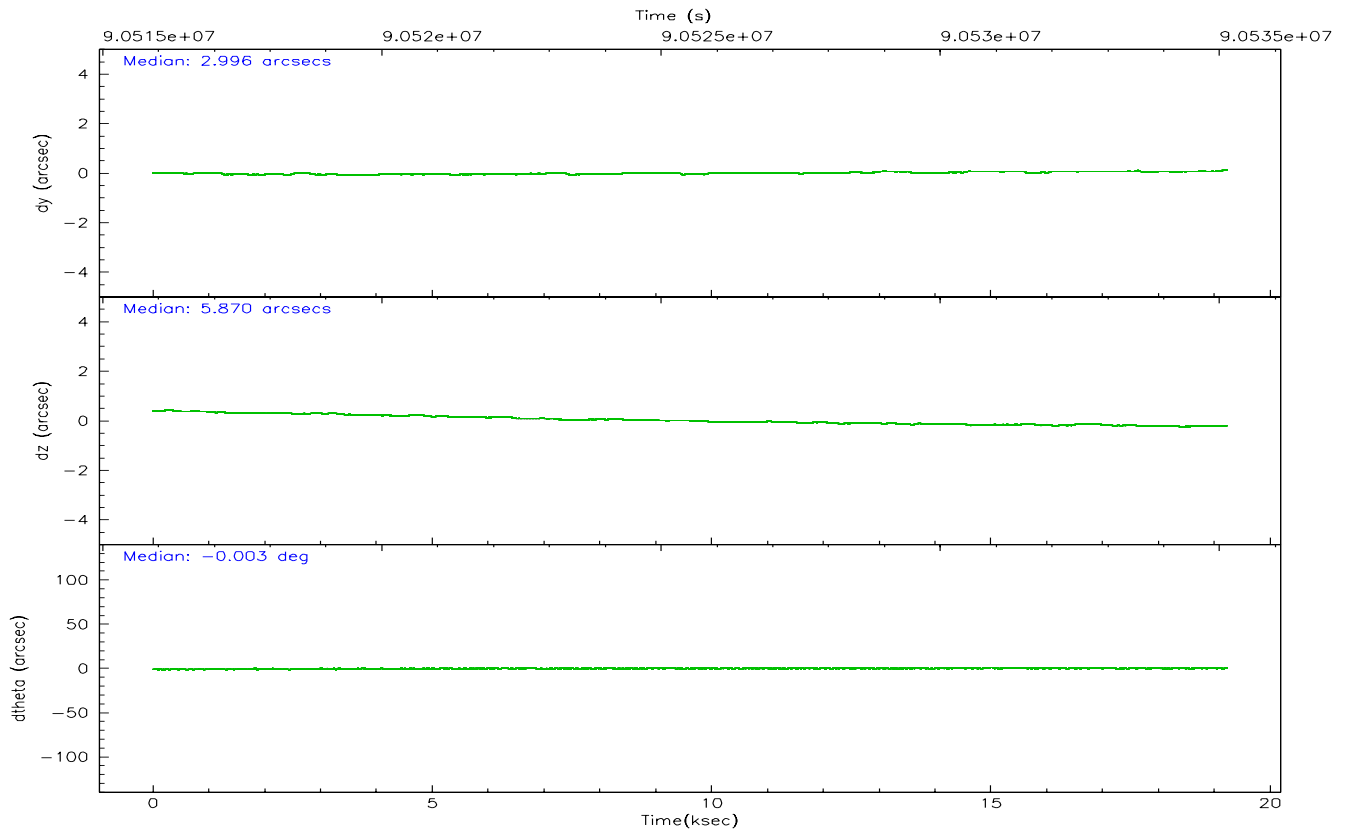
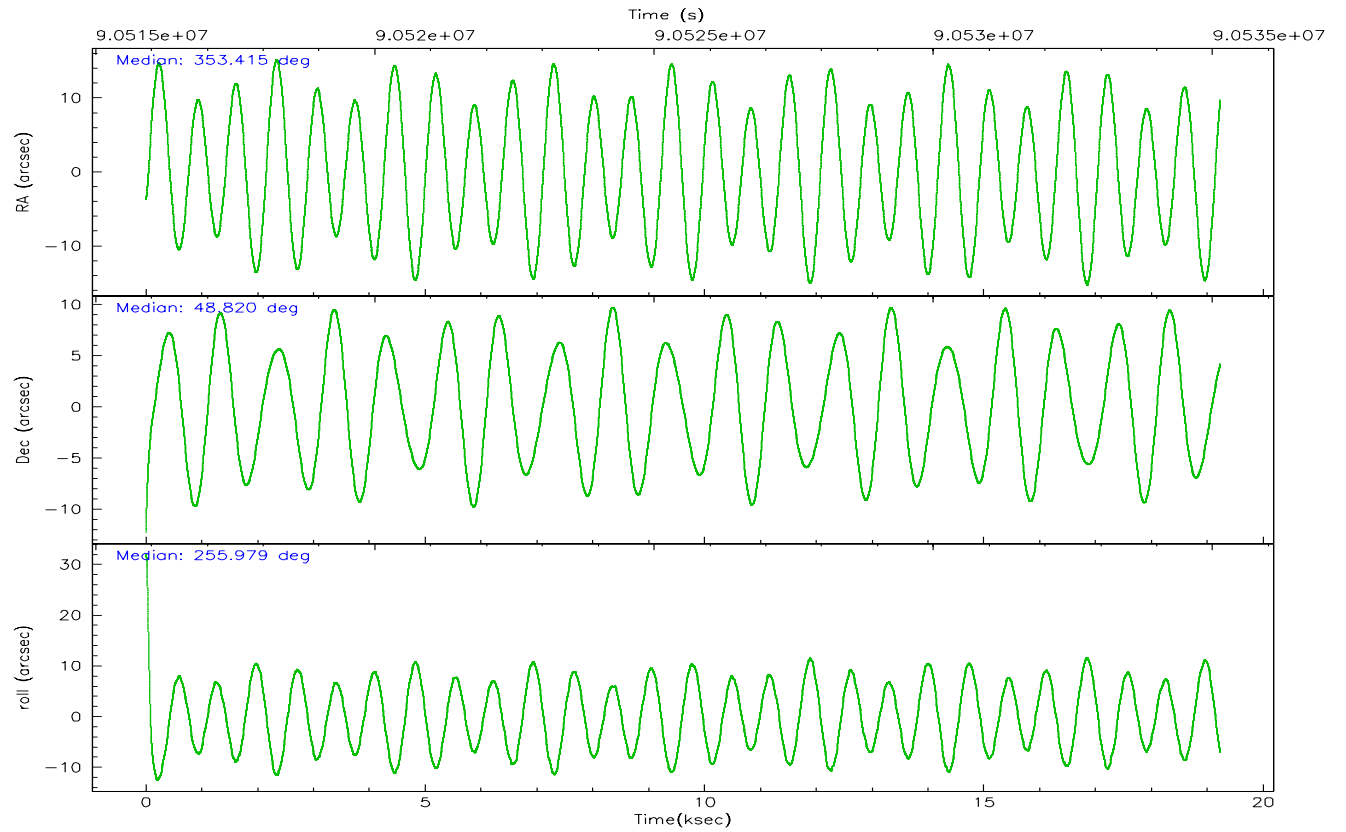
	ccd 4	ccd 5	ccd 6	ccd 7	ccd 8	ccd 9
grade 0 events	5682	7499	5219	4754	9713	5565
	5%	5%	5%	4%	7%	5%
grade 1 events	43	160	32	104	71	46
	0%	0%	0%	0%	0%	0%
grade 2 events	3063	18102	2320	10215	5478	2363
	2%	13%	2%	8%	4%	2%
grade 3 events	1216	2962	1188	4791	3459	1193
	1%	2%	1%	4%	2%	1%
grade 4 events	1202	2785	1208	4871	3186	1216
	1%	2%	1%	4%	2%	1%
grade 5 events	3146	9861	3689	10944	4743	3726
	3%	7%	3%	9%	3%	3%
grade 6 events	2111	31088	2326	26819	6946	2392
	2%	23%	2%	22%	5%	2%
grade 7 events	87945	58308	80570	55787	90089	78445
	84%	44%	83%	47%	72%	82%

2.2 Compared Parameters

Parameter	Planned	Actual	Parameter	Planned	Actual
Instrument	ACIS	ACIS	Obspar format version number	6	6
Detector	ACIS-456789	ACIS-456789	Obspar file type	PREDICTED	ACTUAL
Grating	HETG	HETG	Obspar update status	NONE	UPDATED
Data mode	FAINT	FAINT	Number of optional ACIS chips dropped	0	0
Observation mode	POINTING	POINTING	On-chip summing requested	N	N
Pointing RA	353.402835	353.4146032958441	Subarray requested	CUSTOM	CUSTOM
Pointing Dec	48.846299	48.8200651246927	Subarray start row	1	1
Pointing Roll	255.840218	255.9880092057255	Subarray row count	774	774
SIM focus pos (mm)	-0.684267	-0.6828225247311905	Alternating exposures requested	N	N
SIM defocus (mm)	0	0.001444936568705701	Primary exposure time	0.000000	2.5
SIM translation stage pos (mm)	-187.132523	-187.1228876879999			
SIM translation stage offset (mm)	-3	-3.009634895007935			
Observation start time	90516035.184000	90514666.84152199			
Observation start date	2000-11-13T15:19:31	2000-11-13T14:57:46			
Observation end time	90535135.184000	90536012.979836			
Observation end date	2000-11-13T20:37:51	2000-11-13T20:53:32			
Read mode	TIMED	TIMED			

2.3 Aspect



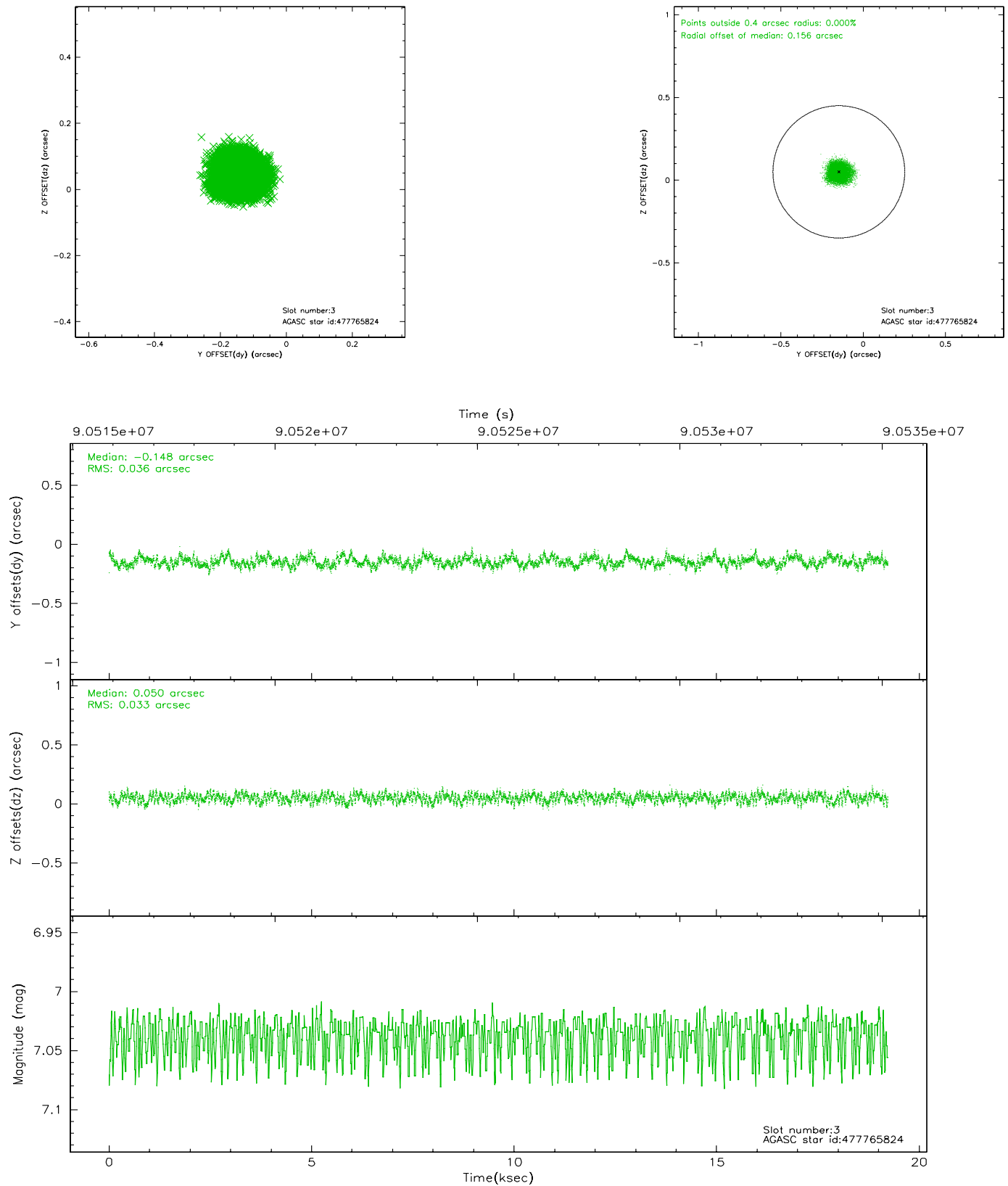


Slot Statistics

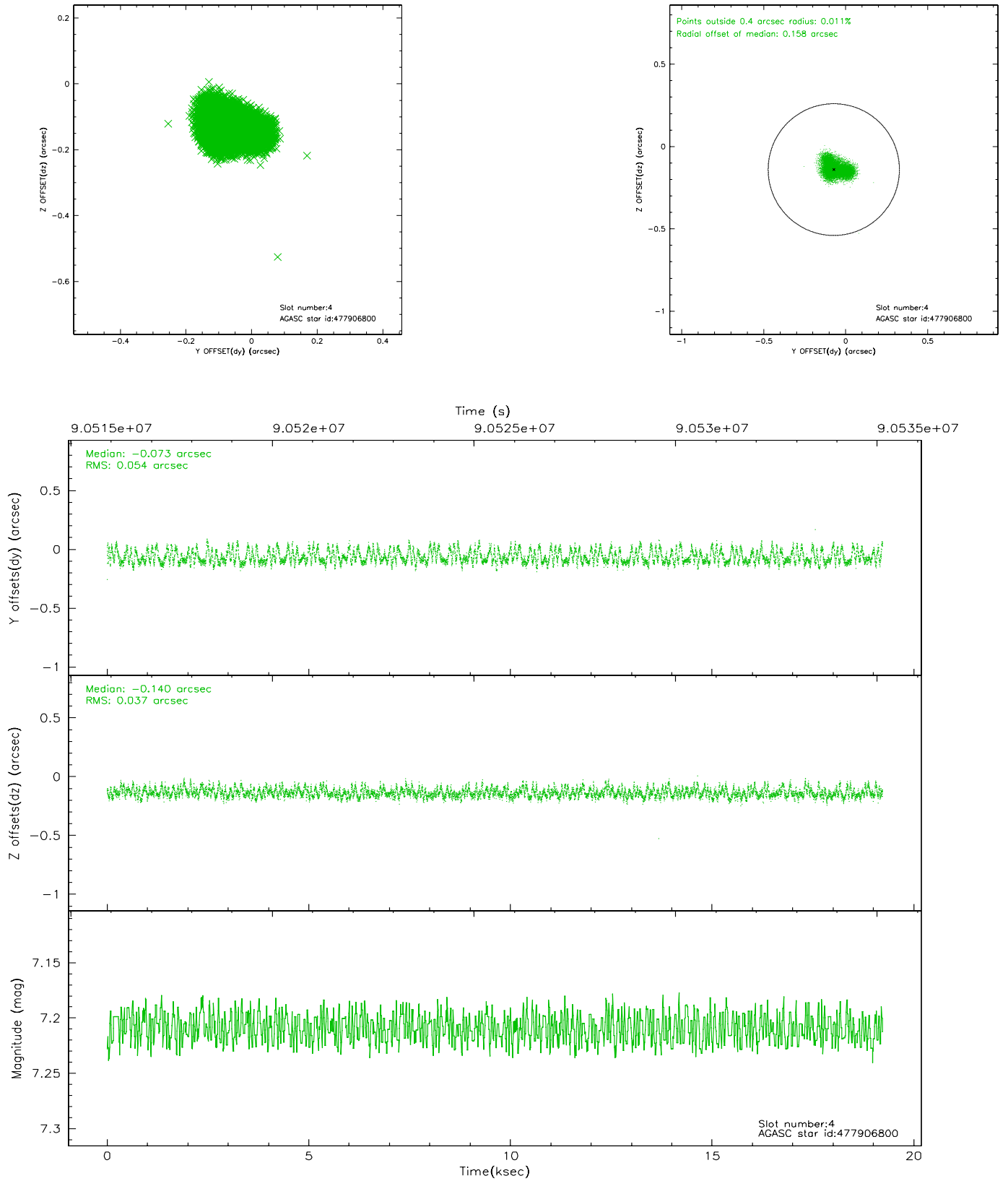
	status	id	mag	n_pts	med_dy	med_dz	dr1	dr2
	FID	ACIS-S-2	7.10	4690	-0.001	-0.026	0.007	0.011
	FID	ACIS-S-4	7.20	4690	-0.069	0.008	0.006	0.010
	FID	ACIS-S-5	7.23	4690	0.039	0.027	0.008	0.012
	GUIDE	477765824	7.04	9380	-0.148	0.050	0.052	0.083
	GUIDE	477906800	7.21	9379	-0.073	-0.140	0.071	0.111
	GUIDE	477239168	8.44	9380	0.225	-0.042	0.075	0.129
	GUIDE	477762672	8.27	9380	-0.017	0.130	0.078	0.121
0.000	0.000	0.000	0.000000	0.000000	0.00	0.00		

2.4 Star Slots

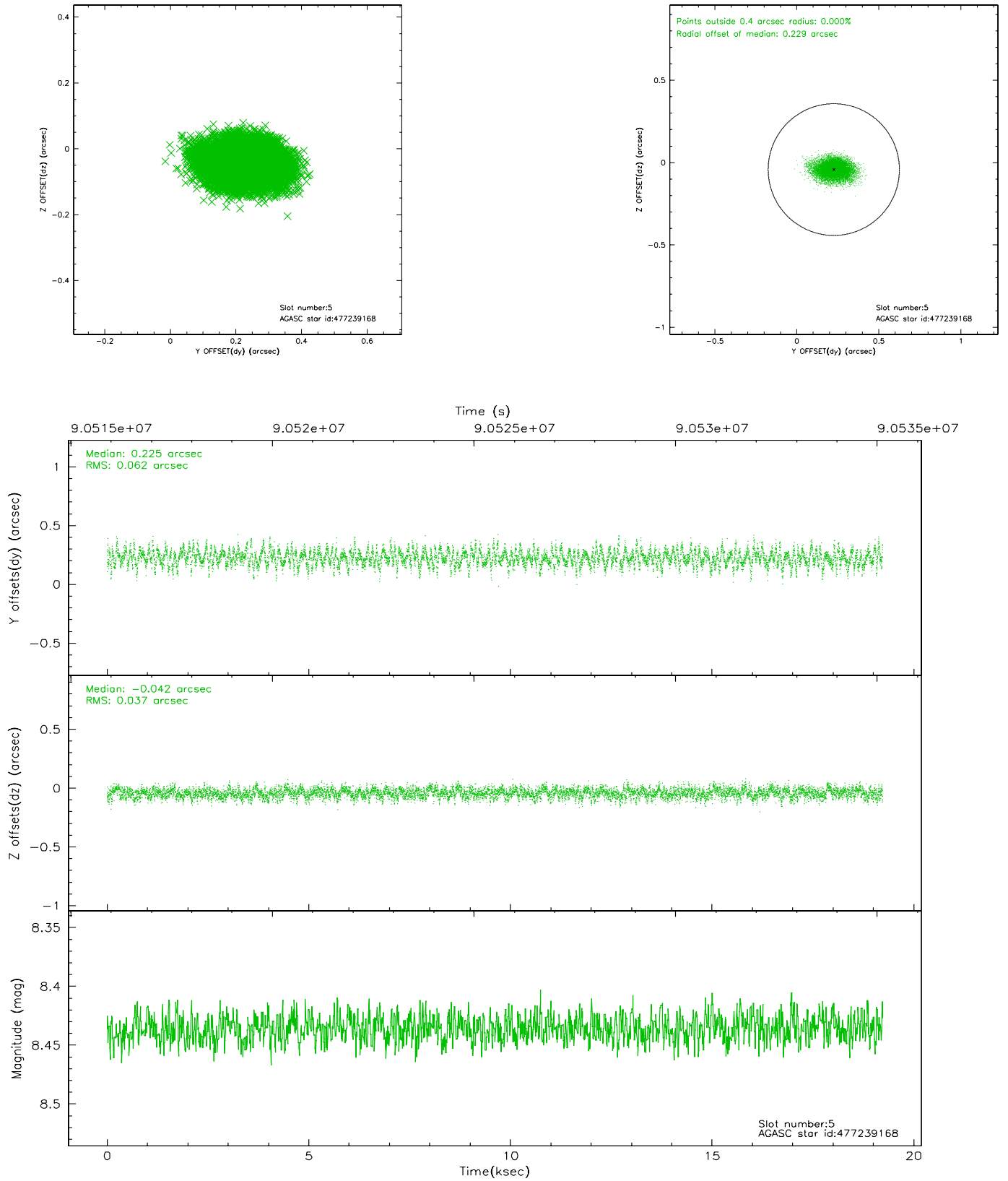
2.4.1 Slot 3



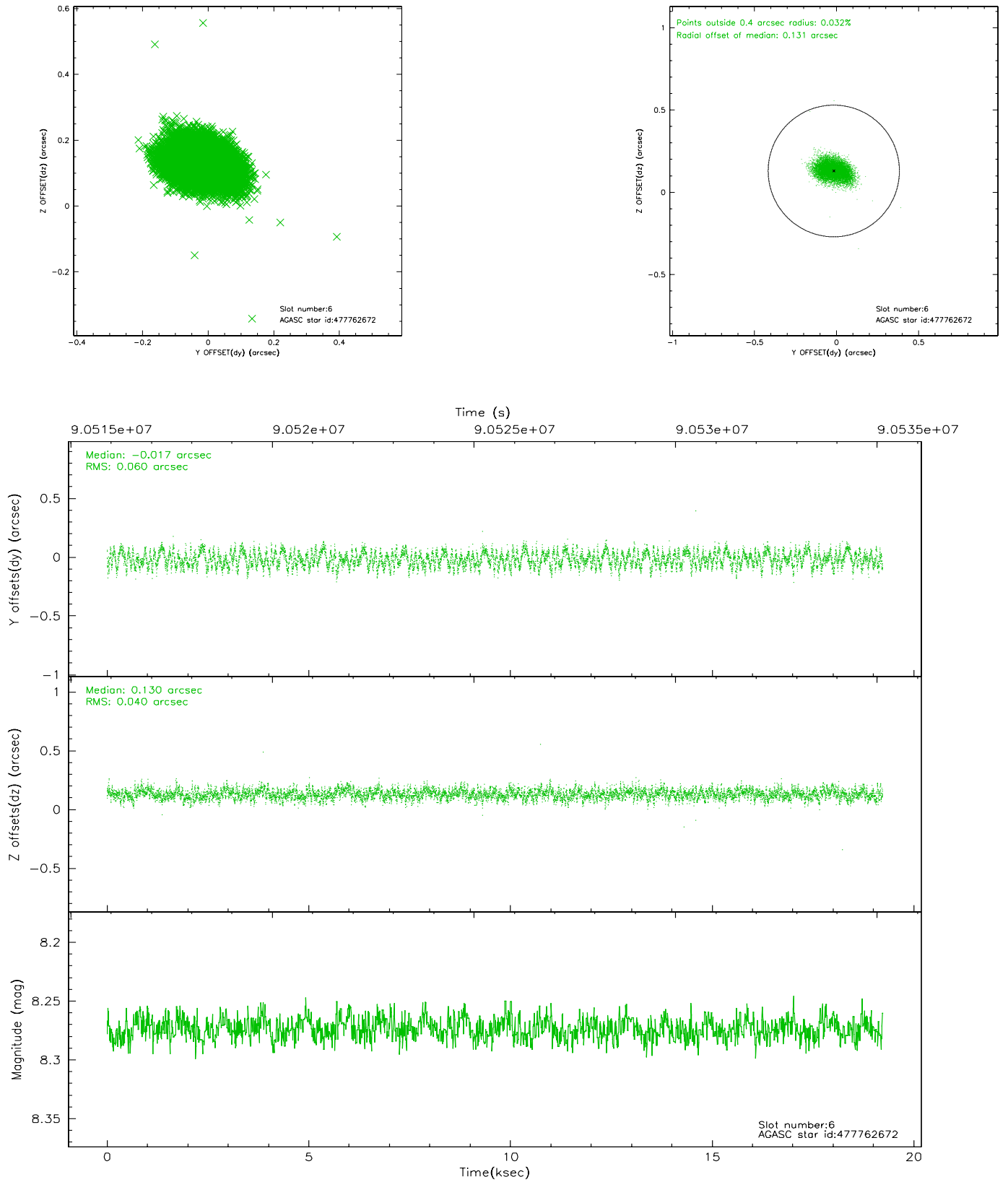
2.4.2 Slot 4



2.4.3 Slot 5

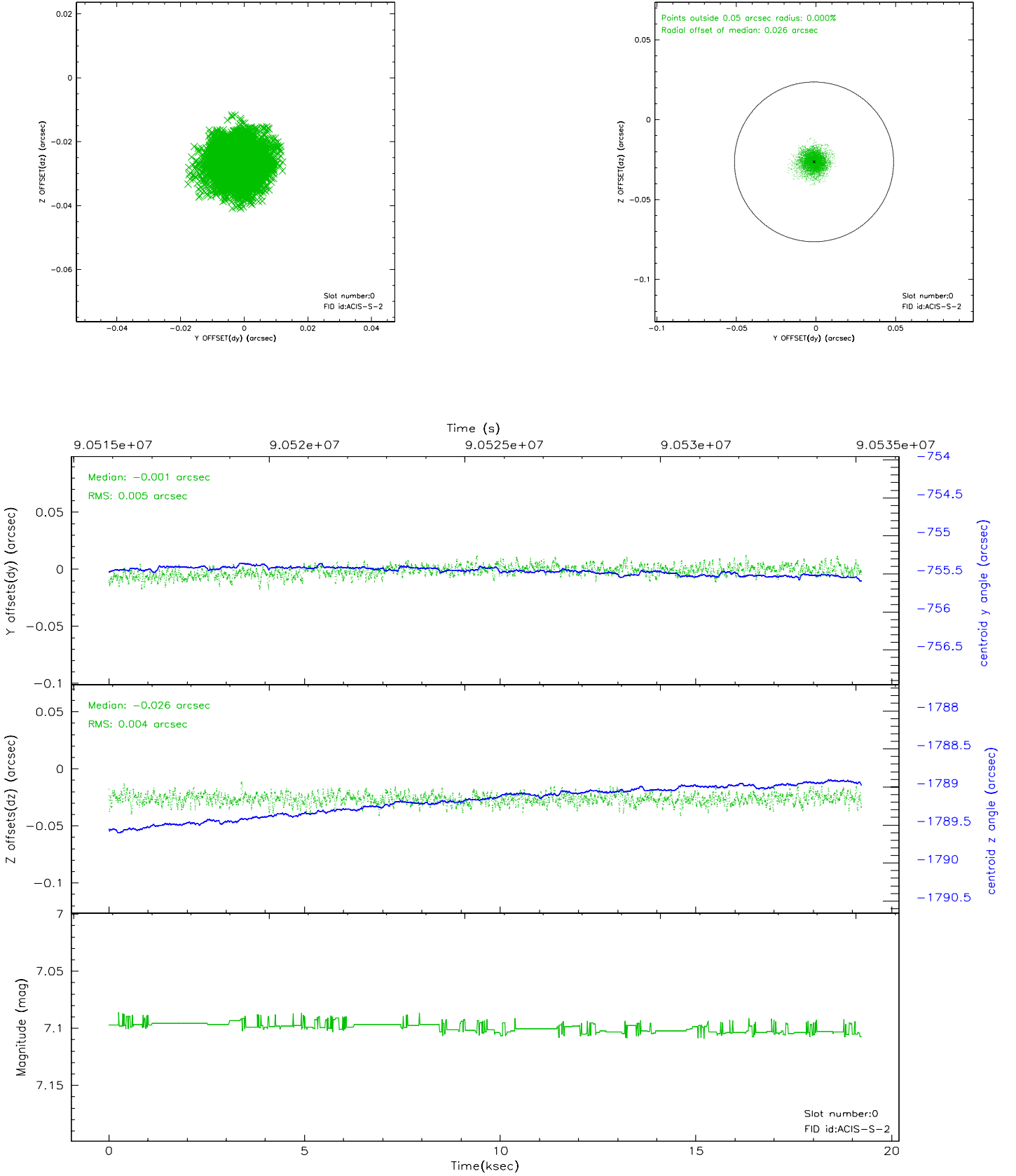


2.4.4 Slot 6

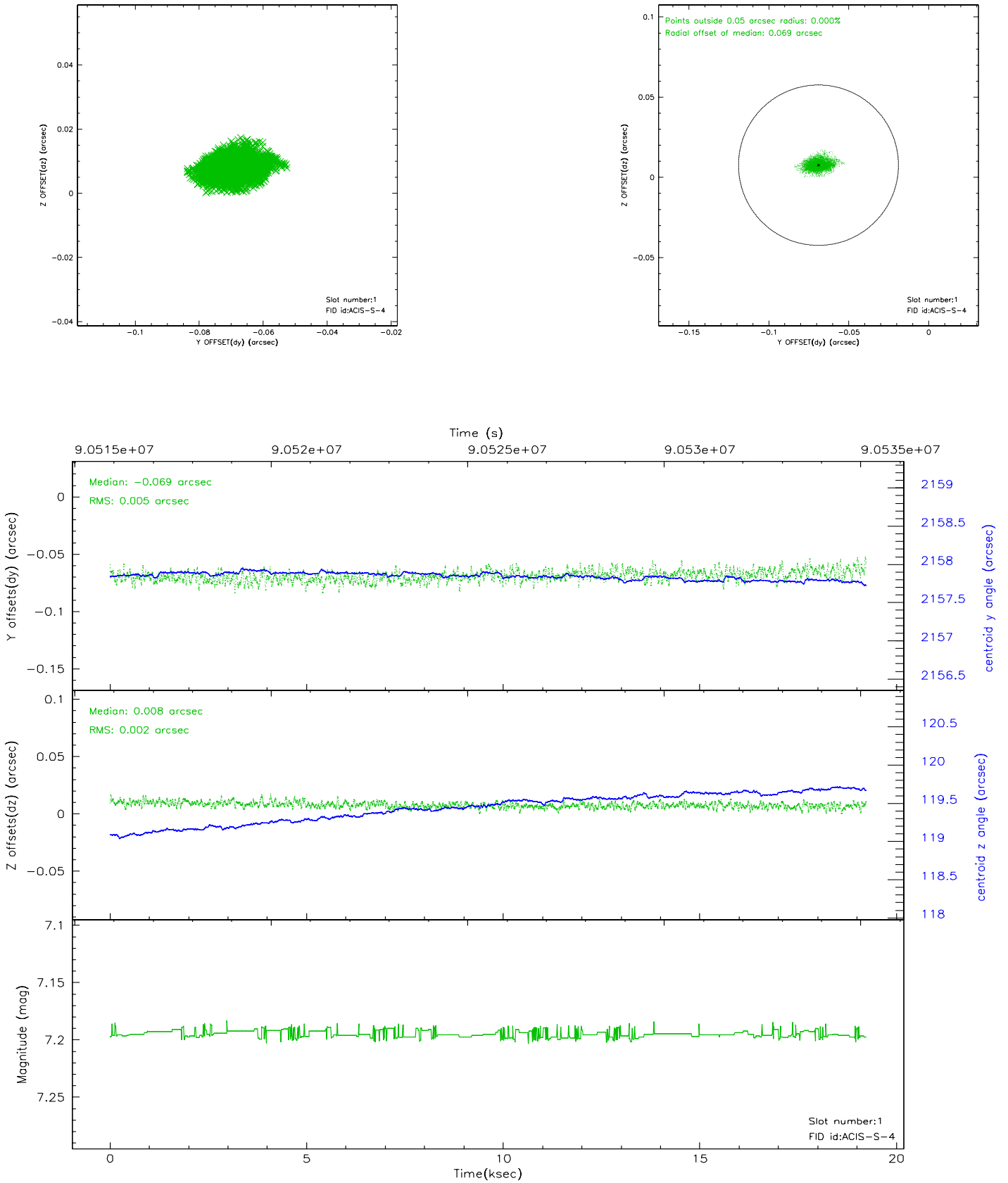


2.5 FID Slots

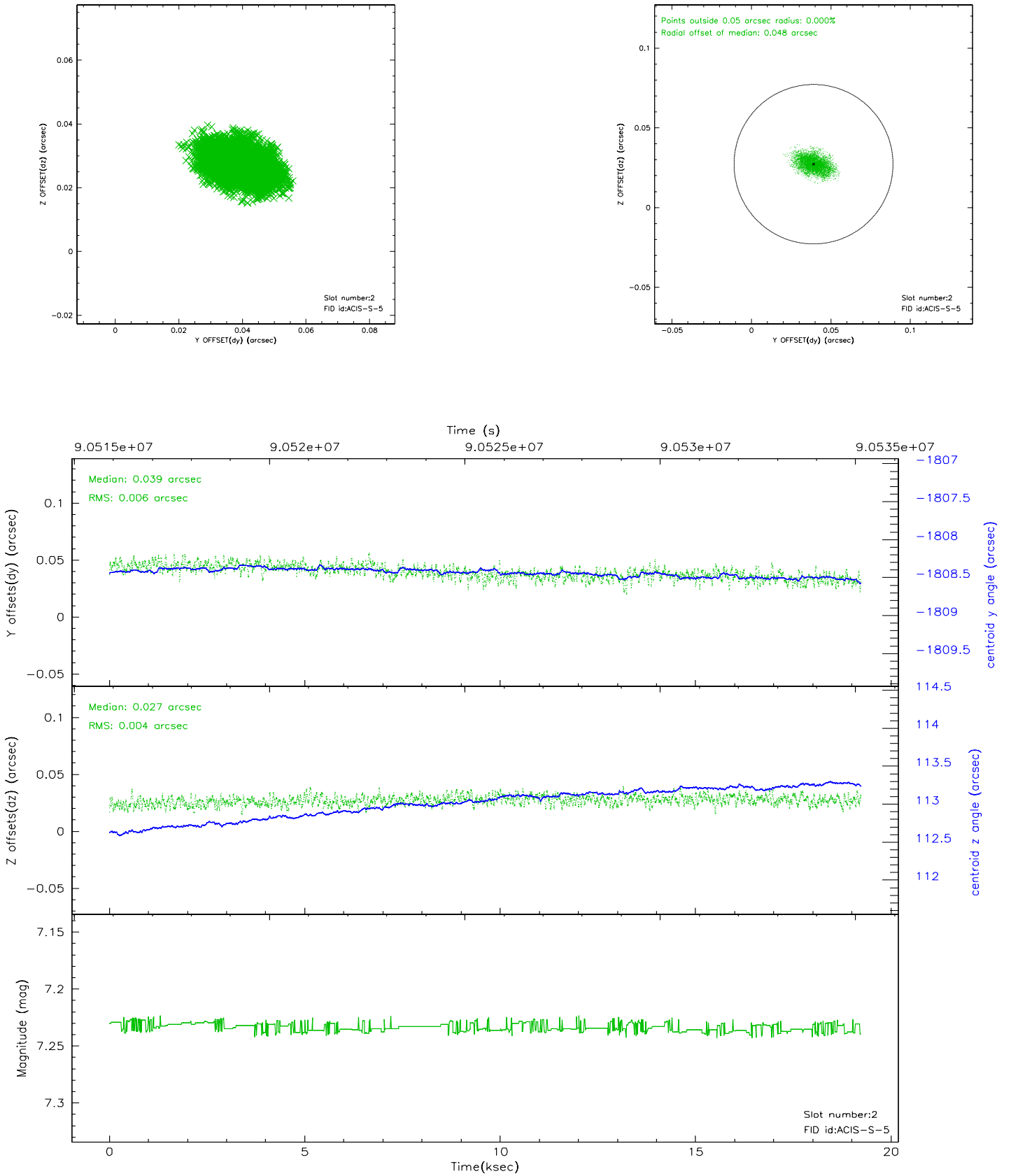
2.5.1 Slot 0



2.5.2 Slot 1

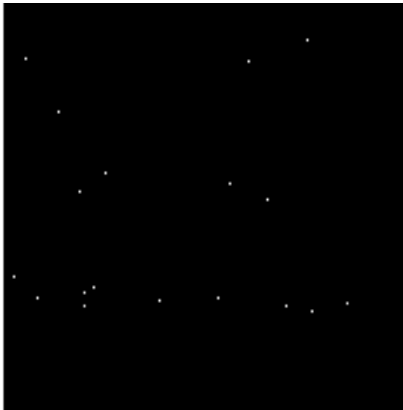


2.5.3 Slot 2

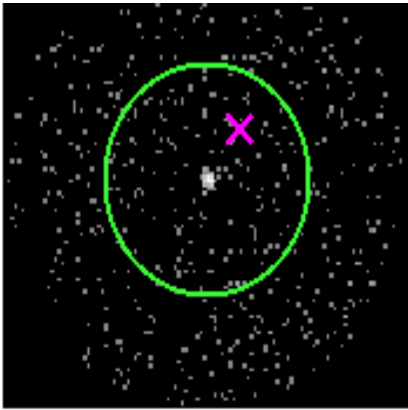


3 Gratings

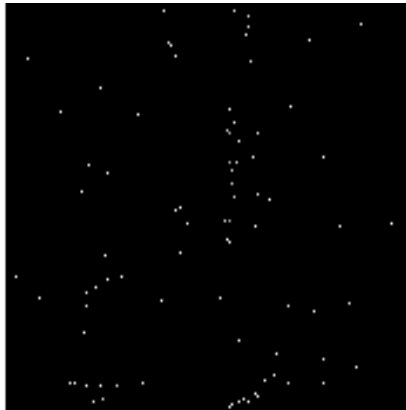
3.1 HEG Arm



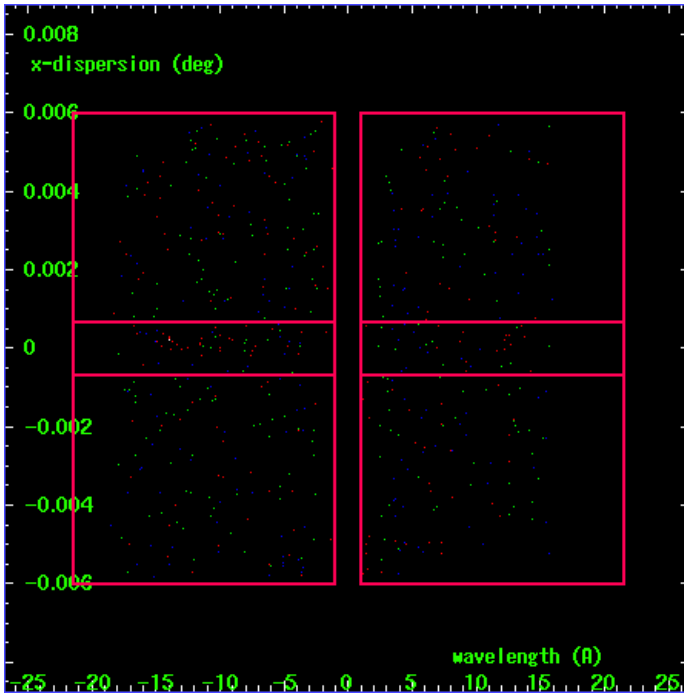
HEG Order Sort 123



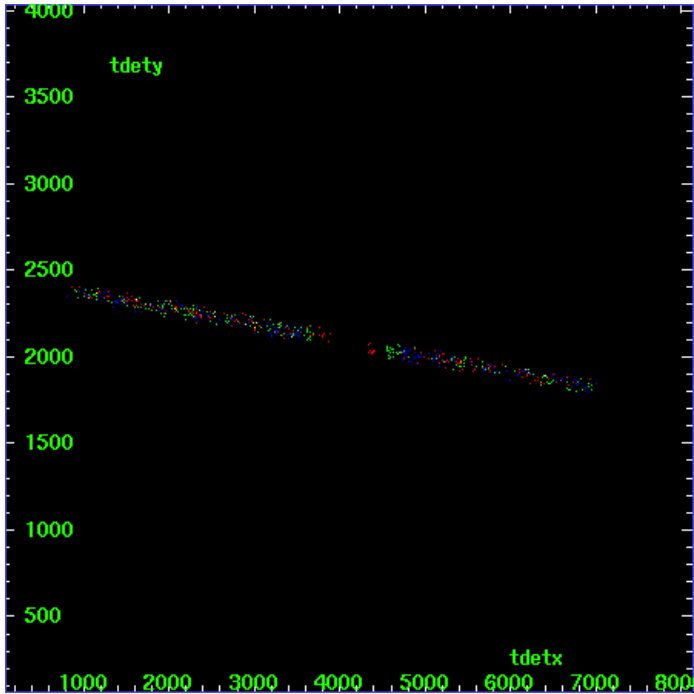
HEG Zero Order



HEG Order Sort ALL

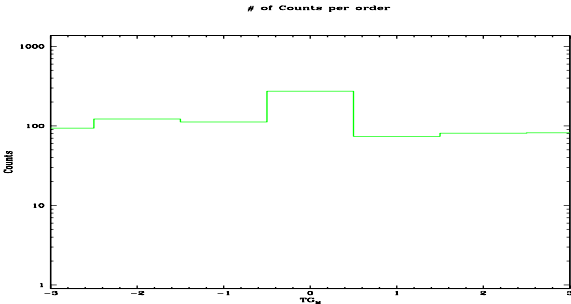


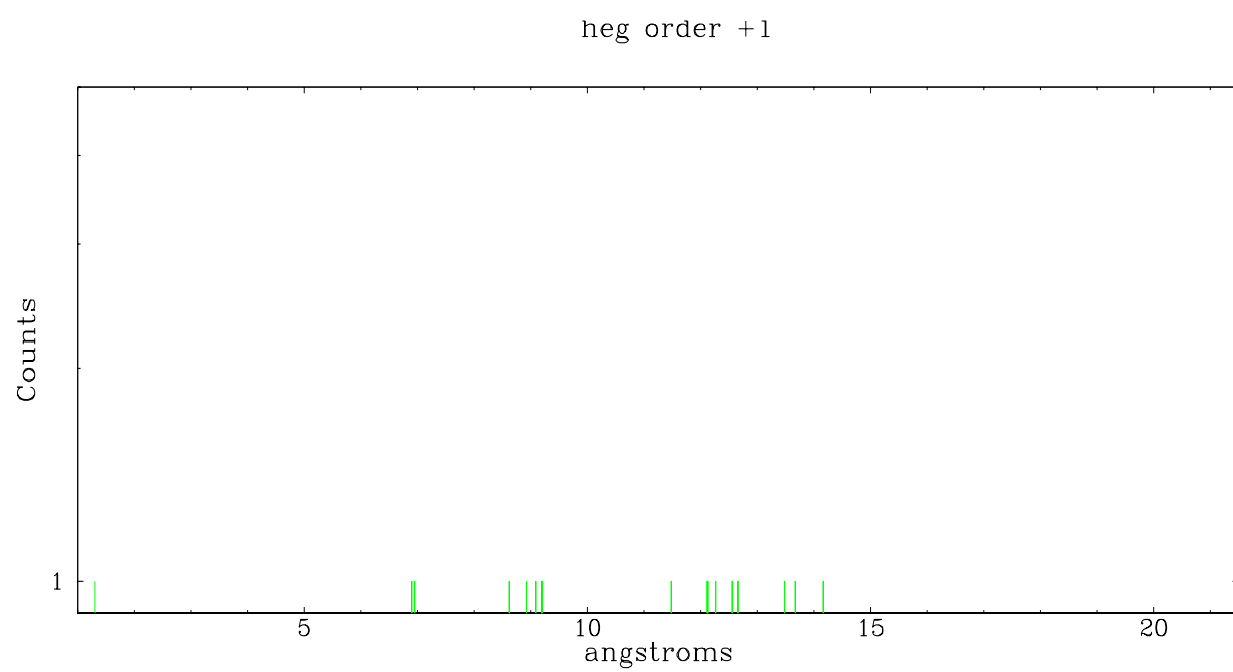
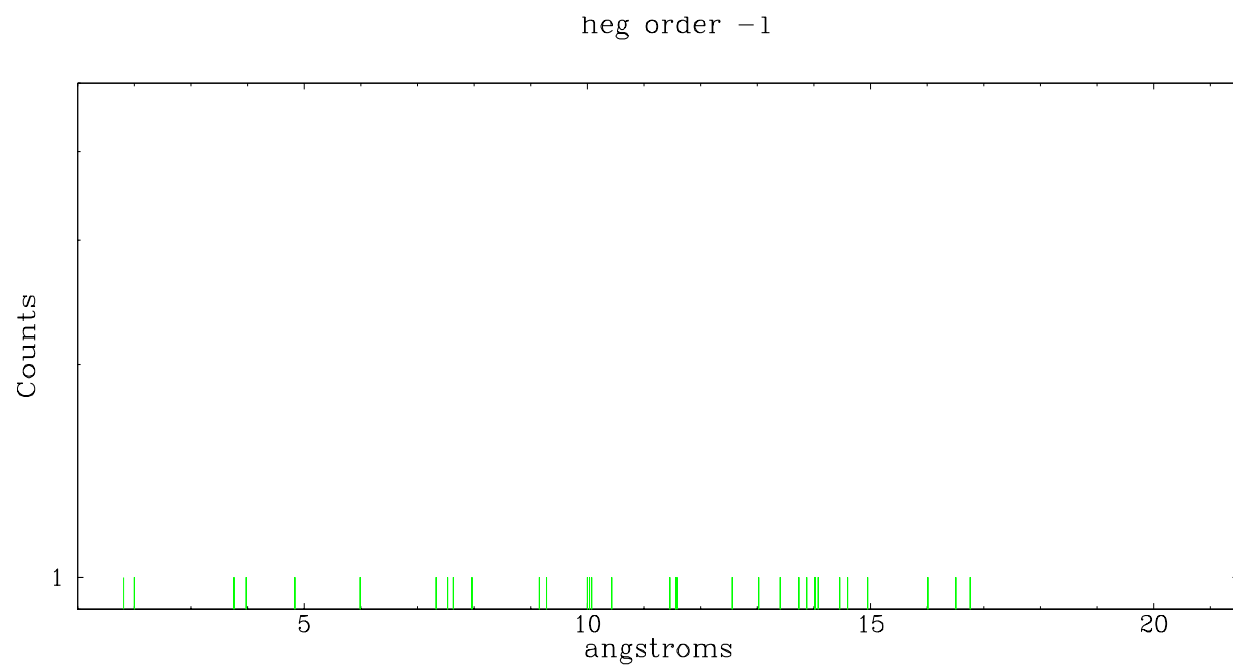
Spot Image HEG



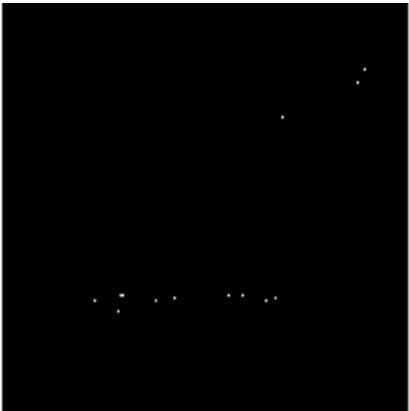
Full Detector HEG

	order -3	order -2	order -1	order 0	order 1	order 2	order 3
Events	94	122	112	273	74	81	82

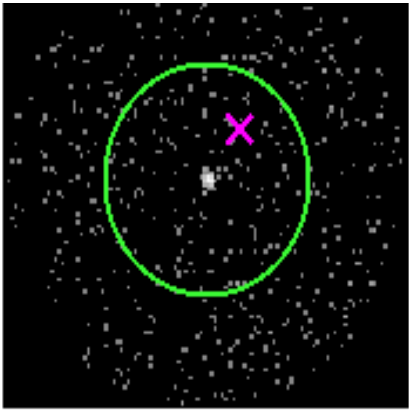




3.2 MEG Arm



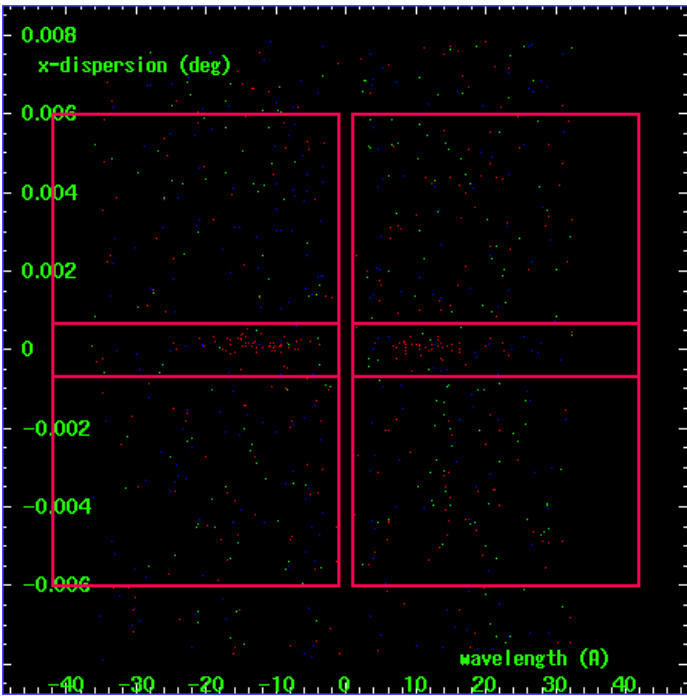
MEG Order Sort 123



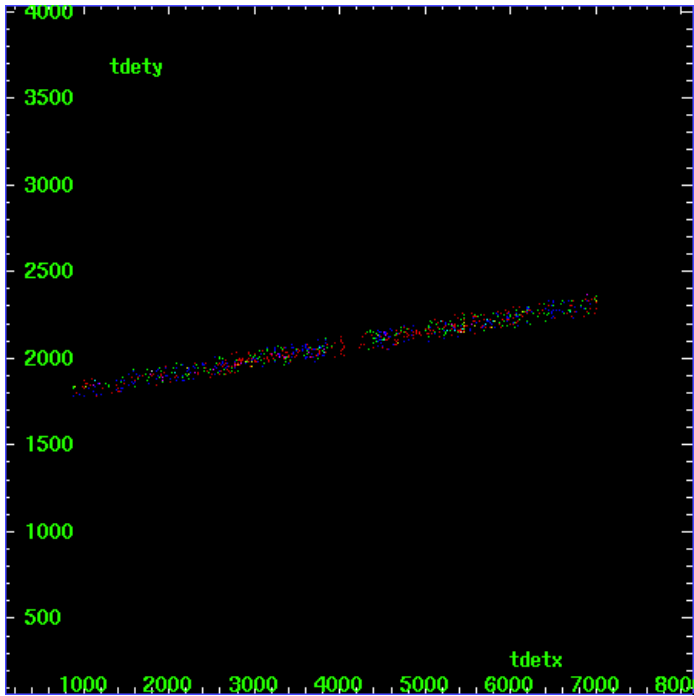
MEG Zero Order



MEG Order Sort ALL

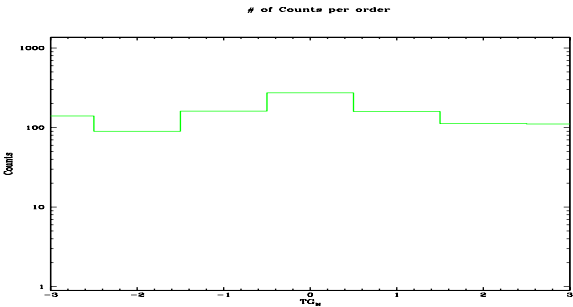


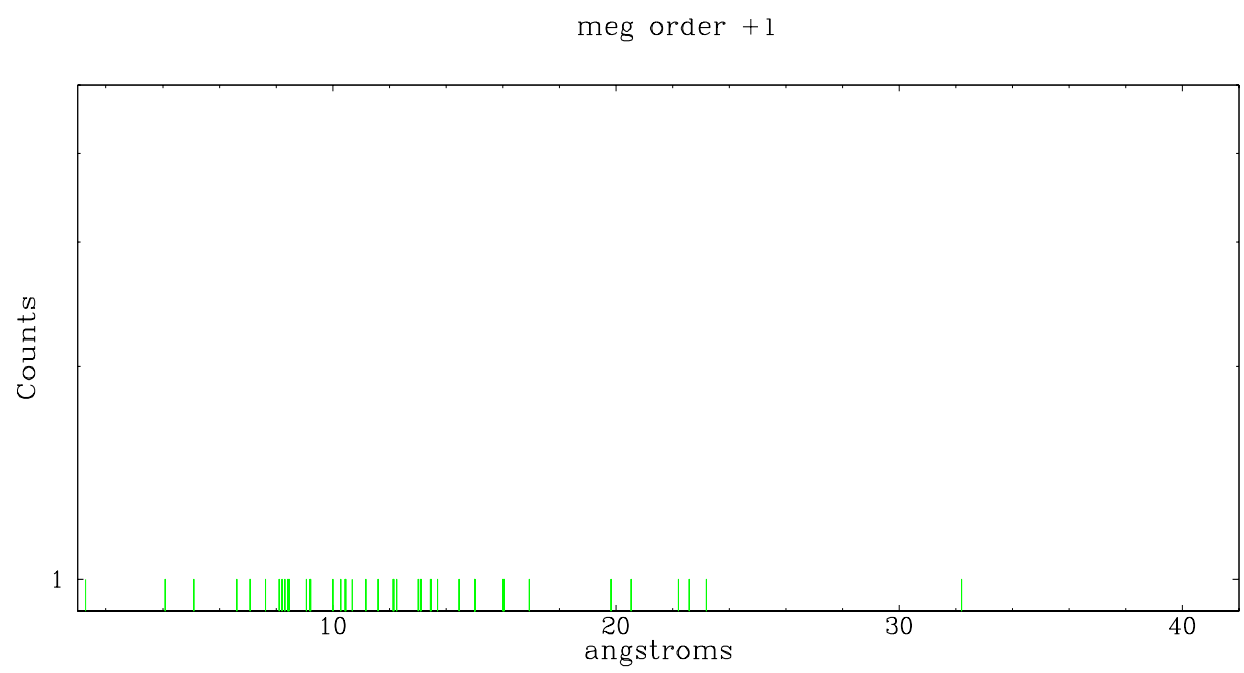
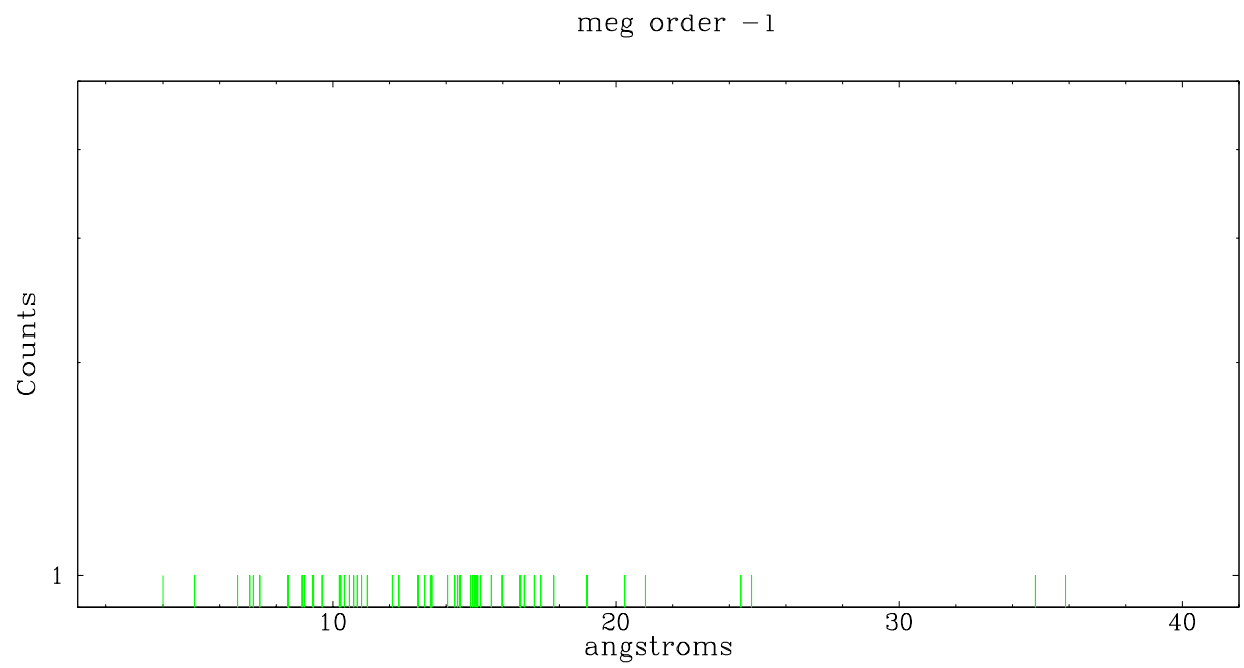
Spot Image MEG



Full Detector MEG

	order -3	order -2	order -1	order 0	order 1	order 2	order 3
Events	140	90	161	273	159	112	111





A Summary

A.1 Status

V&V Scientist	Joy Nichols
V&V Date (YYYY-MM-DD)	2007.06.28
V&V Edition	1
V&V Disposition and Status	OK
V&V Charge Time	19.222

A.2 Comments

Optical photometry of source enabled during the observation. No dispersed spectrum visible, although the data indicate that first order meg spectrum may be present. Standard software processing technique using the tool tgdetect failed to determine an accurate position for the zeroth order for this observation due to low S/N. The processing software defaulted to the coordinates supplied by the user for the position of the zeroth order for the grating spectral extraction. Wavelength assignments may be improved by running tgdetect with custom parameters to accept a smaller S/N value.