

V&V Reference Report

L2 ASCDS Version : 7.6.9

Observation 2076 - L2 Version 001
Chandra X-Ray Center

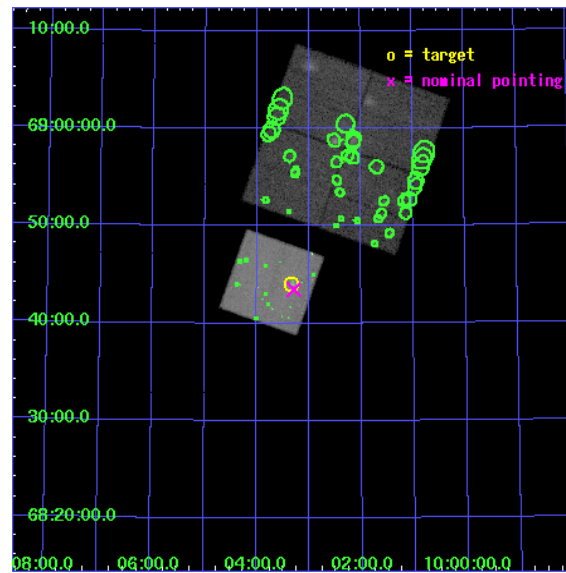
L2 Processing Date : Nov 7 2006

Contents

1	Front	2
2	OBI	3
2.1	OBI	3
2.1.1	Images	3
2.1.2	Bias	3
2.1.3	Parameters	4
2.1.4	Events	4
2.2	Compared Parameters	5
2.3	Aspect	6
2.4	Star Slots	9
2.4.1	Slot 3	9
2.4.2	Slot 4	10
2.4.3	Slot 5	11
2.4.4	Slot 6	12
2.4.5	Slot 7	13
2.5	FID Slots	14
2.5.1	Slot 0	14
2.5.2	Slot 1	15
2.5.3	Slot 2	16
3	Point Sources	17
A	Summary	18
A.1	Status	18
A.2	Comments	18

1 Front

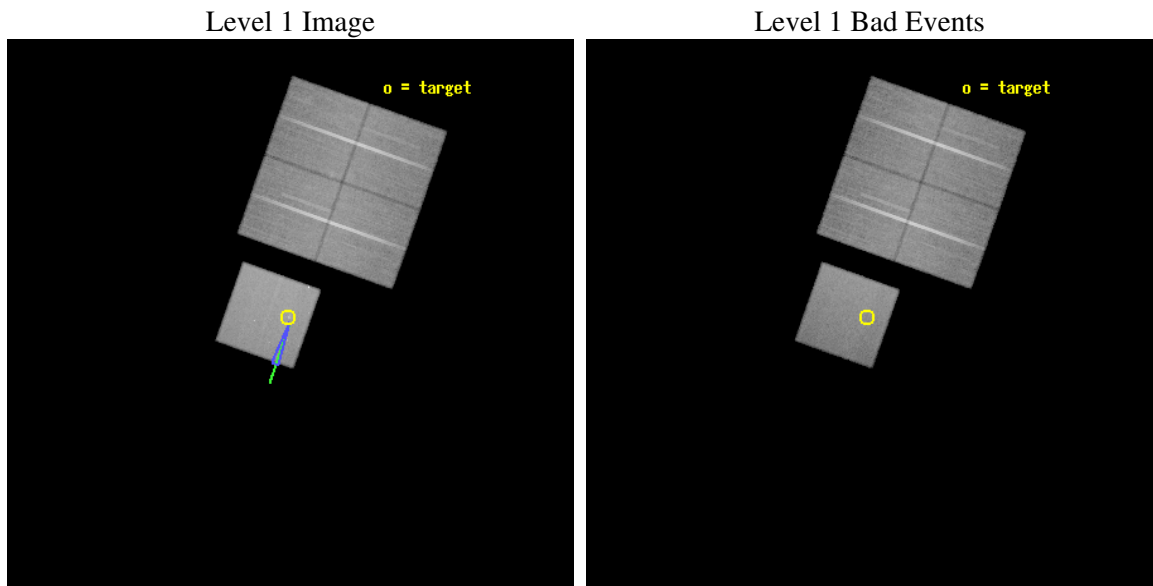
seq_num	600210
obs_id	2076
title	STELLAR FEEDBACK AND THE EVOLUTION OF DWARF GALAXIES
observer	Dr. Crystal Martin
object	NGC 3077
dtcycle	0
cycle	P
ra_targ	150.8375
dec_targ	68.733889
ra_nom	150.82273604305
dec_nom	68.7250154464
roll_nom	199.47201507244
revision	2
ontime	54141.4998959
livetime	53434.101341368
ontime0	54135.21799536
ontime1	54132.077005178
ontime2	54141.4998959
ontime3	54141.4998959
ontime7	54141.4998959
l2events	312718



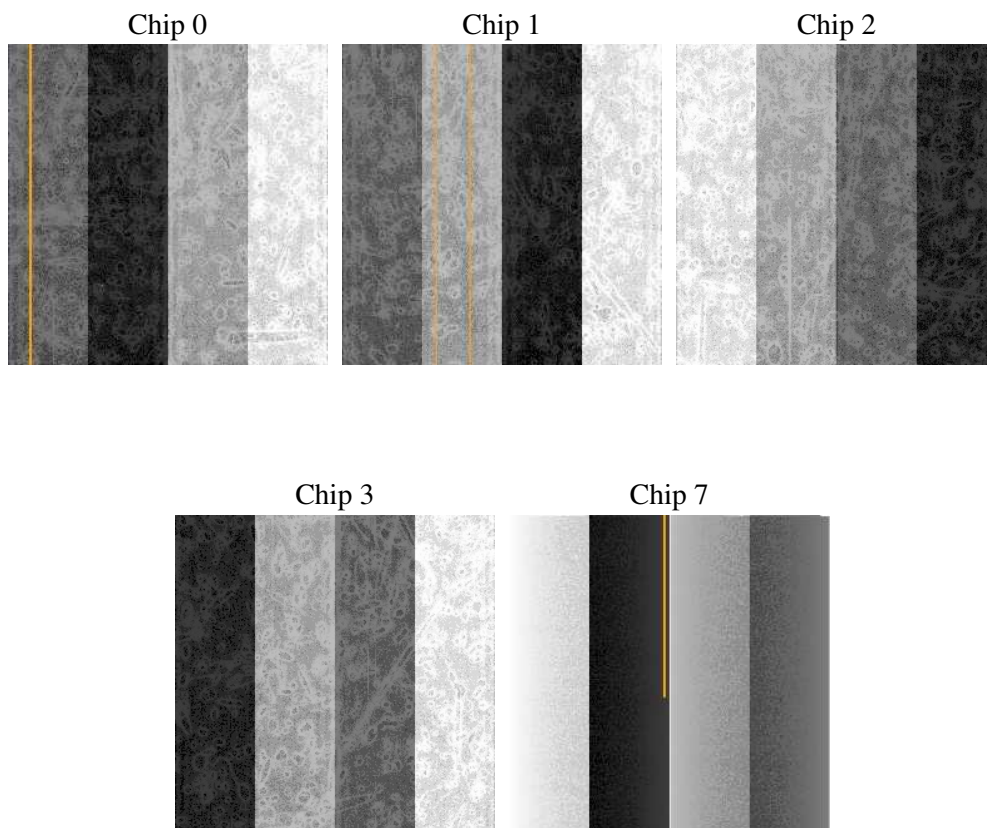
2 OBI

2.1 OBI

2.1.1 Images



2.1.2 Bias



2.1.3 Parameters

obi_num	0
ascdsver	7.6.9
caldbver	3.2.3
date	2006-11-08T00:04:32
revision	2

sched_exp_time	54000.000000
ontime	54314.174749196
ontime0	54307.892818734
ontime1	54304.751828551
ontime2	54314.174719274
ontime3	54314.174719274
ontime7	54314.174749196
l1events	1831148

2.1.4 Events

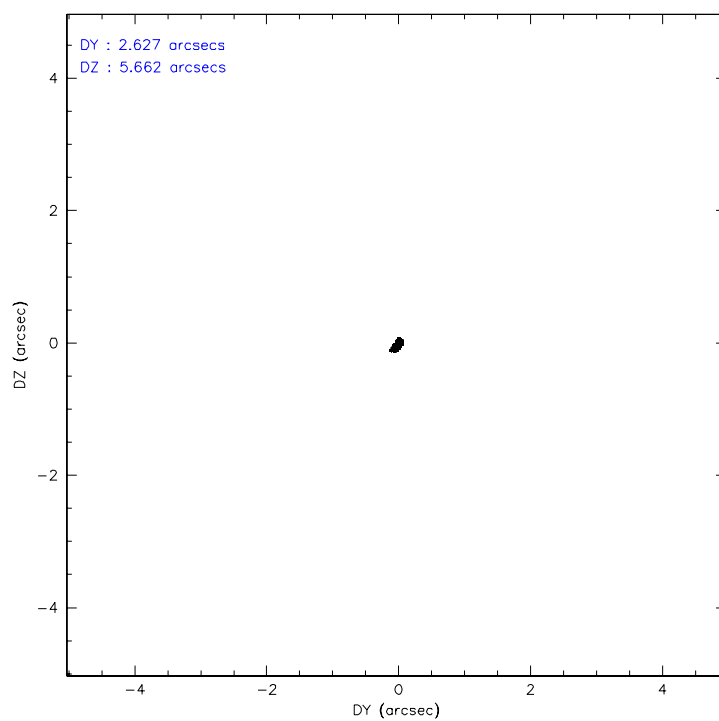
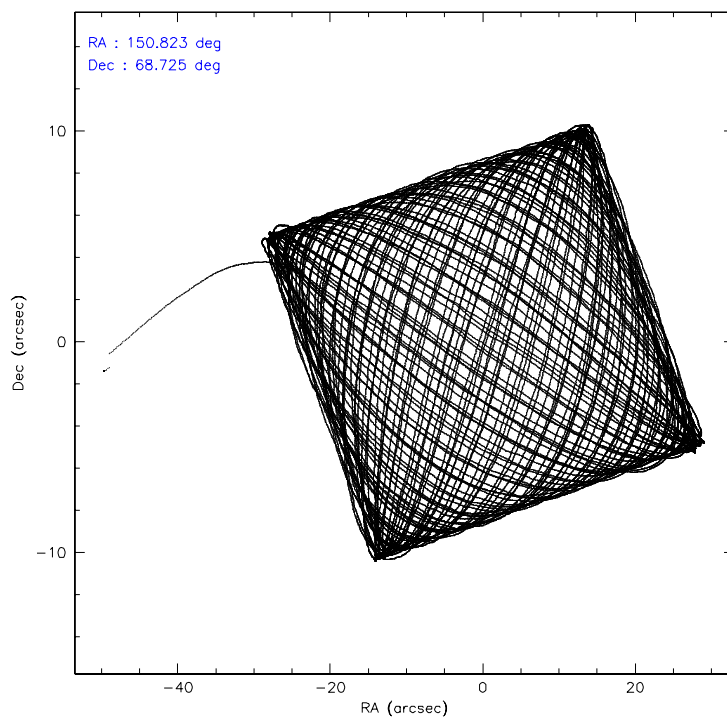
	ccd 0	ccd 1	ccd 2	ccd 3	ccd 7
level 1 events	326784	333835	356555	354125	459849
rejected events	285082	289130	317221	315858	282145
rejected %	87%	86%	88%	89%	61%

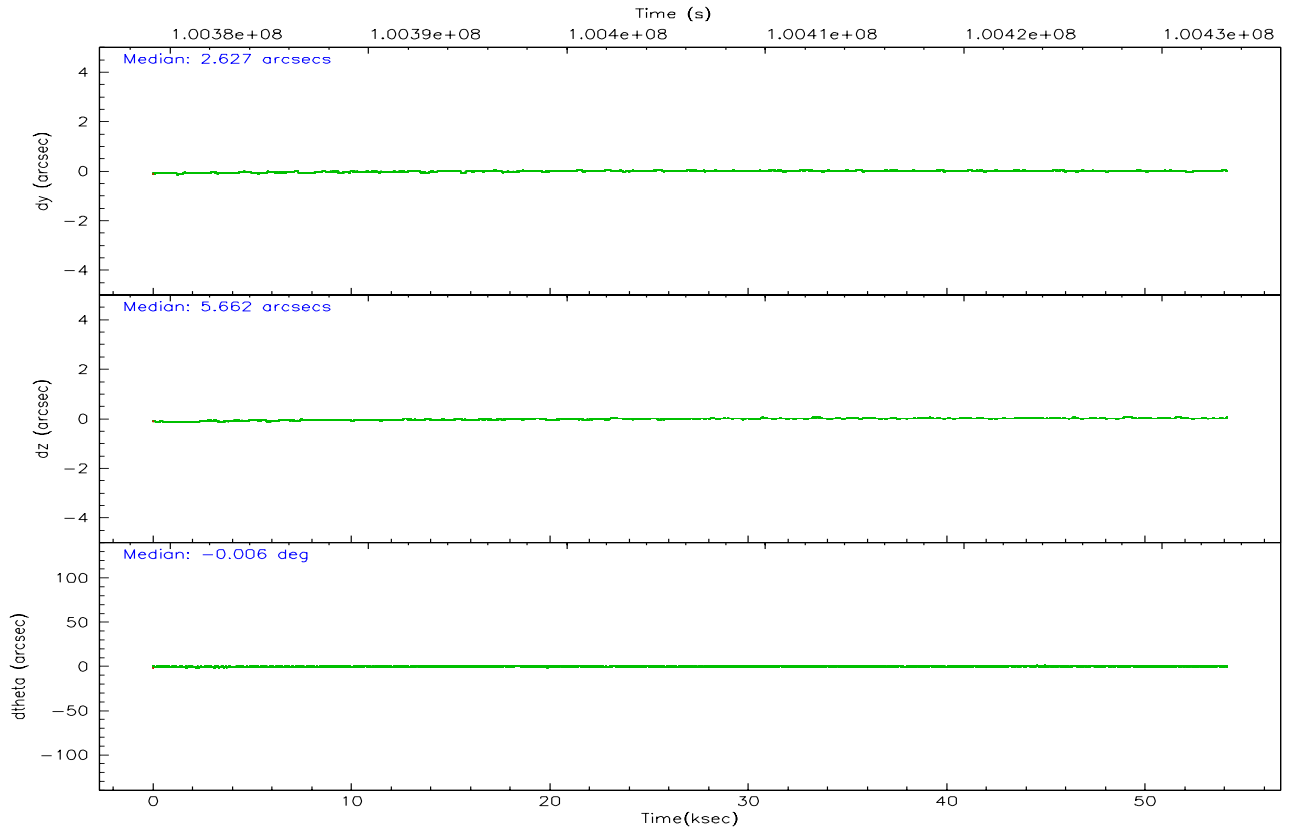
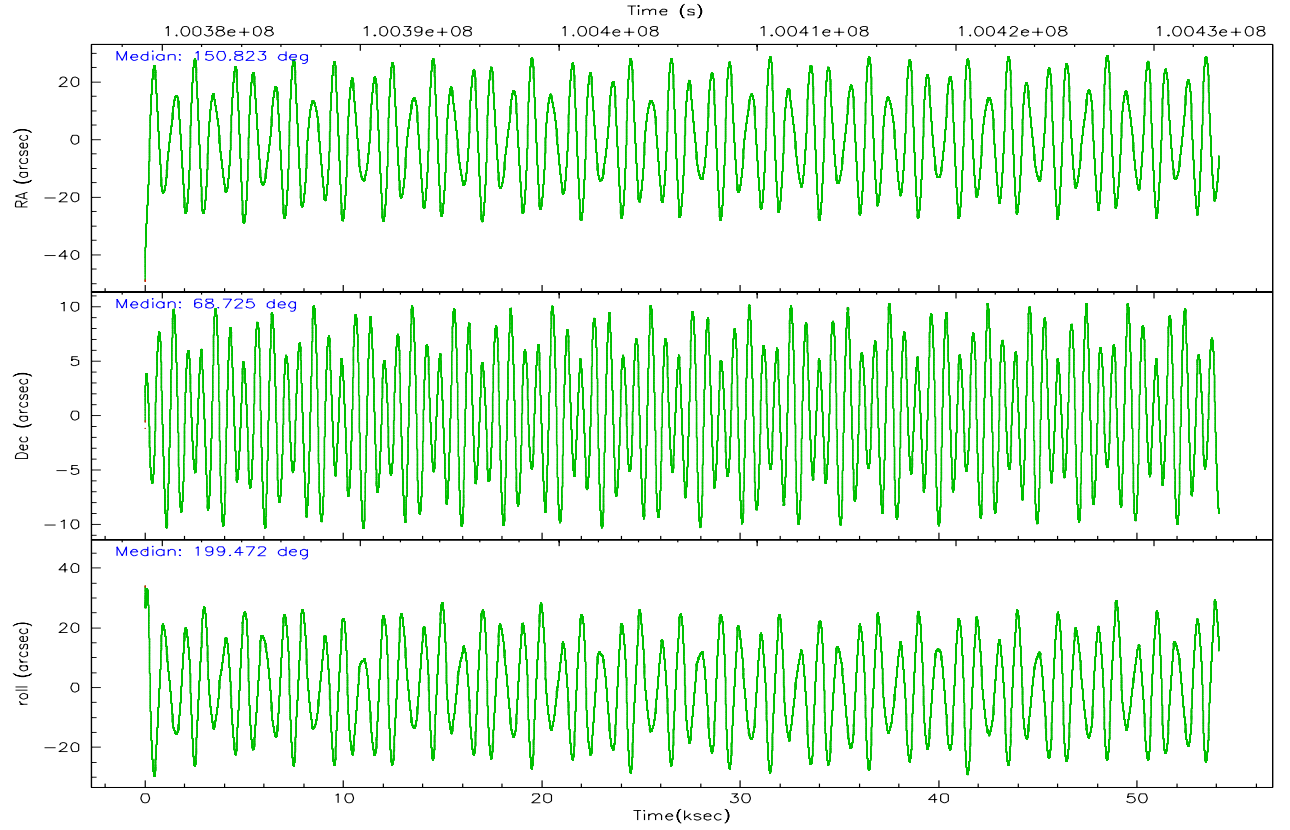
	ccd 0	ccd 1	ccd 2	ccd 3	ccd 7
grade 0 events	17994	18864	16803	15919	11700
	5%	5%	4%	4%	2%
grade 1 events	154	156	159	151	288
	0%	0%	0%	0%	0%
grade 2 events	8635	8752	8374	7791	43190
	2%	2%	2%	2%	9%
grade 3 events	4202	4653	3850	3898	9794
	1%	1%	1%	1%	2%
grade 4 events	3833	4541	3681	3743	9649
	1%	1%	1%	1%	2%
grade 5 events	12545	13788	12079	13788	31048
	3%	4%	3%	3%	6%
grade 6 events	7154	8046	6768	7038	103990
	2%	2%	1%	1%	22%
grade 7 events	272267	275035	304841	301797	250190
	83%	82%	85%	85%	54%

2.2 Compared Parameters

Parameter	Planned	Actual	Parameter	Planned	Actual
Instrument	ACIS	ACIS	Obspar format version number	6	6
Detector	ACIS-01237	ACIS-01237	Obspar file type	PREDICTED	ACTUAL
Grating	NONE	NONE	Obspar update status	NONE	UPDATED
Data mode	FAINT	FAINT	Number of optional ACIS chips dropped	0	0
Observation mode	POINTING	POINTING	On-chip summing requested	N	N
Pointing RA	150.871166	150.8227360430482	Subarray requested	NONE	NONE
Pointing Dec	68.745944	68.72501544640011	Alternating exposures requested	N	N
Pointing Roll	199.270258	199.4720150724374	Primary exposure time	0.000000	3.1
Roll angle	200.000000	200.000000			
Roll tolerance	5.000000	5.000000			
Roll constraint allows 180D rotation	N	N			
SIM focus pos (mm)	-0.684267	-0.6828225247311905			
SIM defocus (mm)	0	0.001444936568705701			
SIM translation stage pos (mm)	-190.132523	-190.1400660498719			
SIM translation stage offset (mm)	0	0.00754346686406393			
Observation start time	100379287.184000	100378197.63256			
Observation start date	2001-03-07T19:07:03	2001-03-07T18:49:57			
Observation end time	100433287.184000	100434068.33472			
Observation end date	2001-03-08T10:07:03	2001-03-08T10:21:08			
Read mode	TIMED	TIMED			

2.3 Aspect



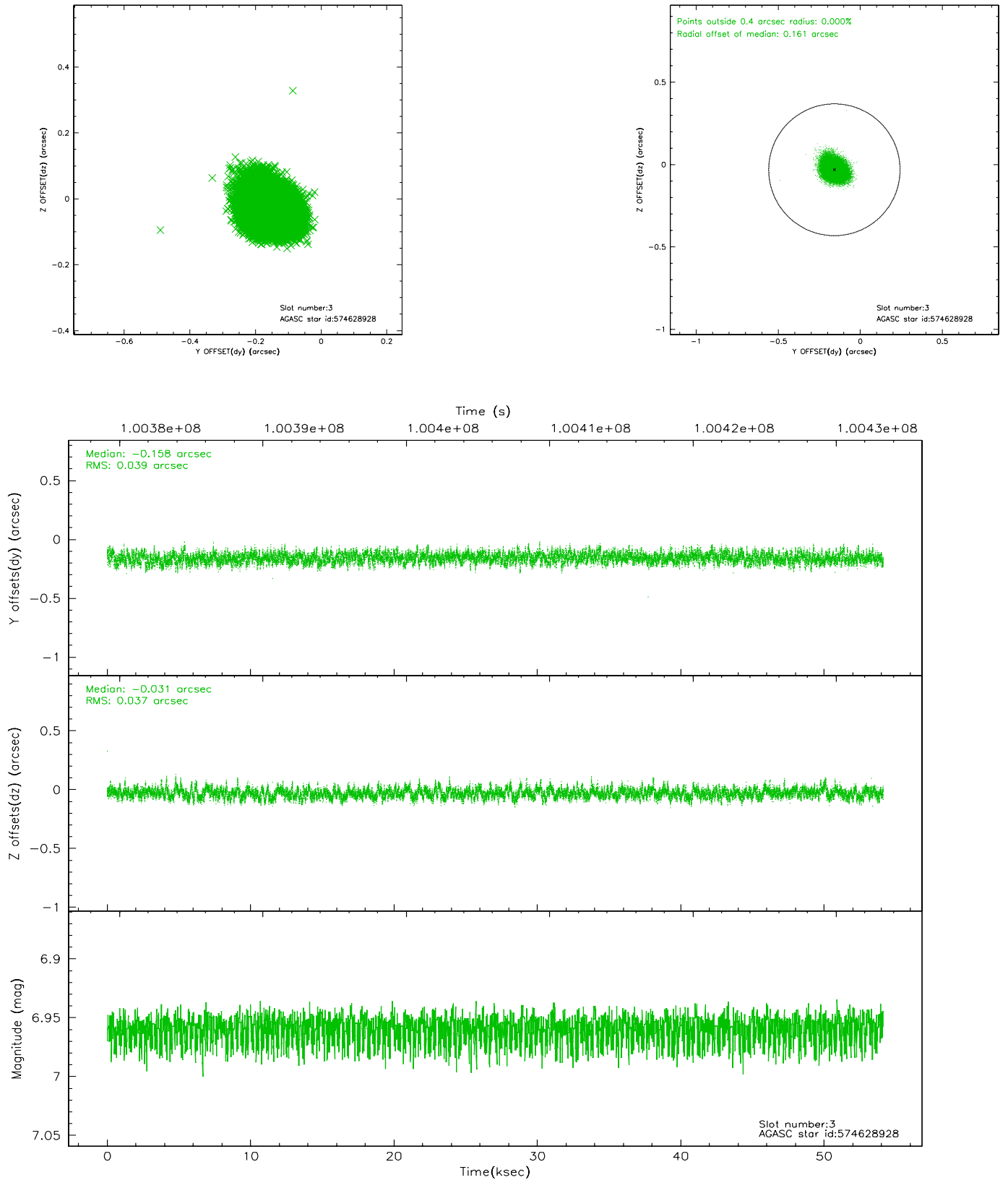


Slot Statistics

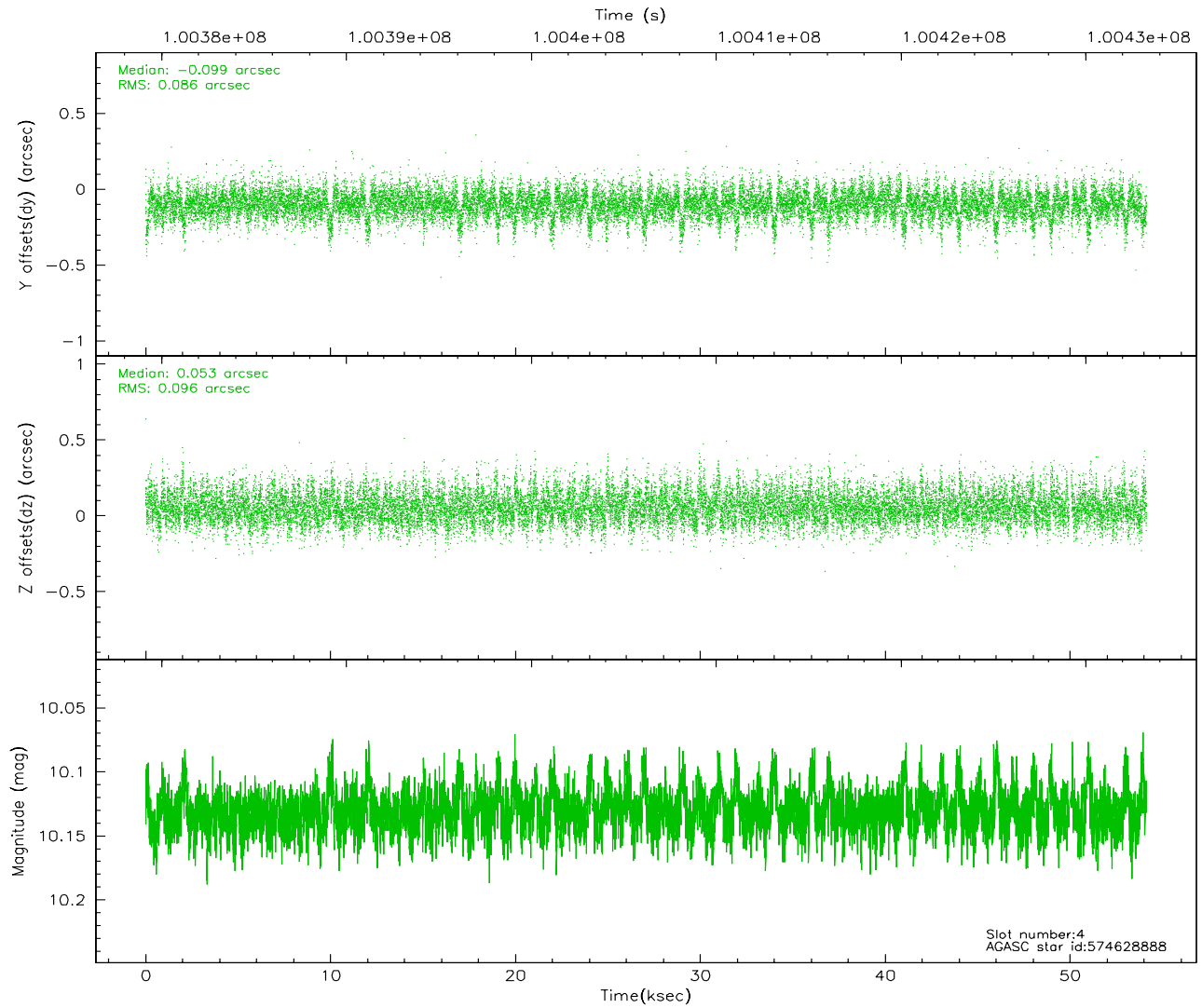
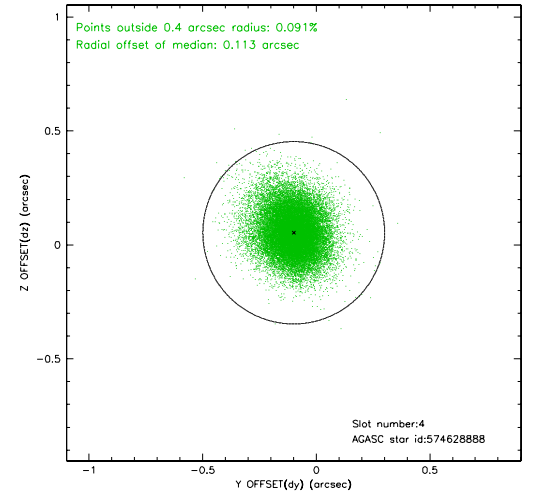
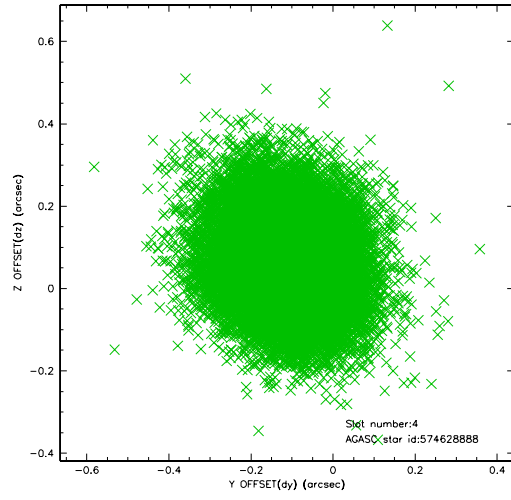
slot	status	id	mag	n_pts	med_dy	med_dz	dr1	dr2	ra	dec	mean_y	mean_z
0	FID	ACIS-S-1	7.19	13204	-0.029	0.005	0.007	0.015	0.000000	0.000000	940.77	-1722.40
1	FID	ACIS-S-5	7.24	13203	0.048	-0.005	0.007	0.020	0.000000	0.000000	-1808.18	175.16
2	FID	ACIS-S-6	7.36	13206	-0.040	0.012	0.008	0.015	0.000000	0.000000	406.33	819.12
3	GUIDE	574628928	6.96	26410	-0.158	-0.031	0.057	0.093	152.379559	68.663998	-1775.74	907.34
4	GUIDE	574628888	10.13	26322	-0.099	0.053	0.134	0.228	152.641133	68.801223	-2251.61	541.01
5	GUIDE	574495536	10.50	26376	0.087	-0.073	0.181	0.296	150.278877	68.875631	570.00	-698.12
6	GUIDE	574489160	9.99	26393	0.224	0.061	0.145	0.230	149.677320	68.172146	2185.17	1407.79
7	GUIDE	574626304	10.13	26400	-0.044	-0.013	0.131	0.215	152.287813	68.808326	-1821.34	376.11

2.4 Star Slots

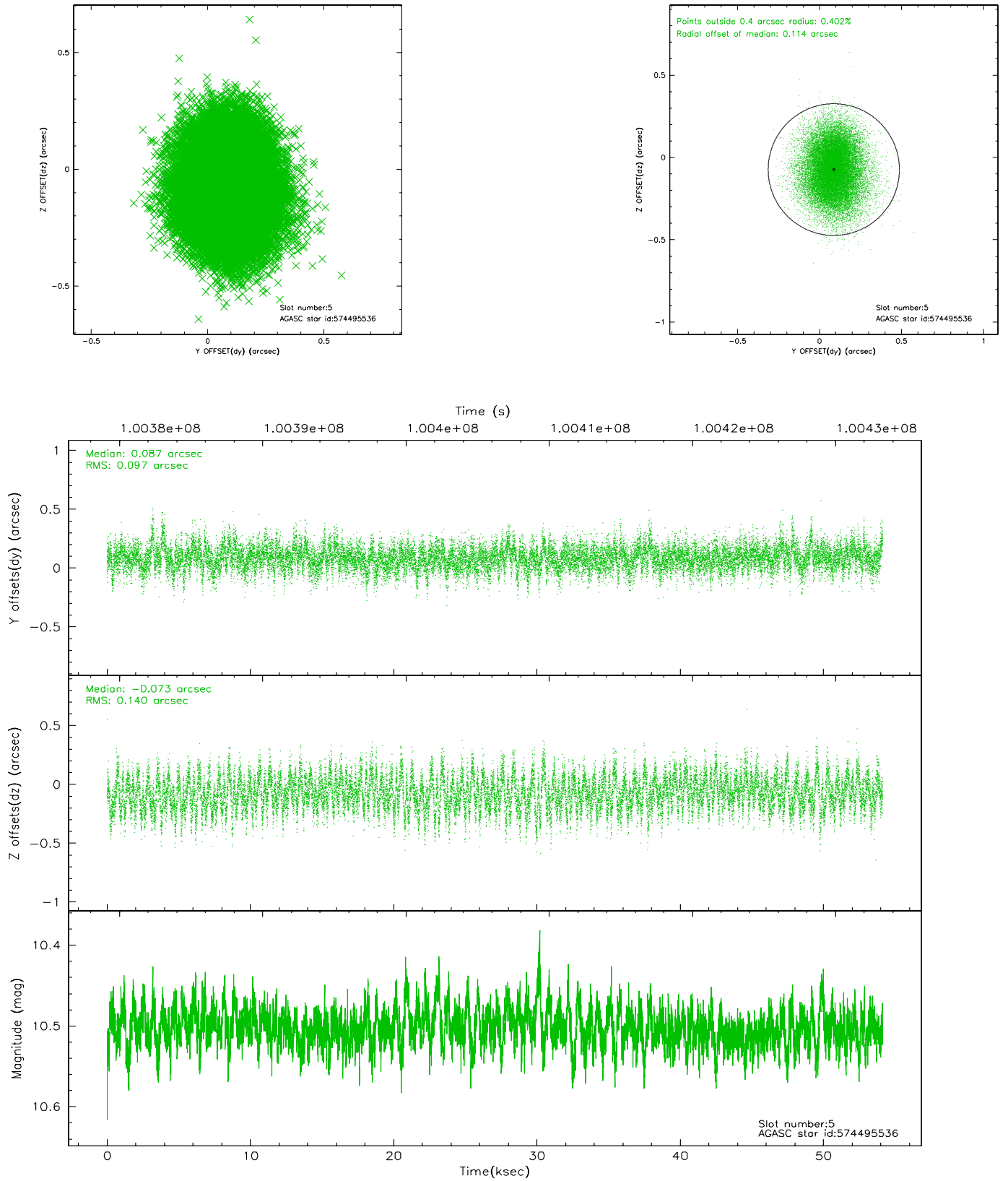
2.4.1 Slot 3



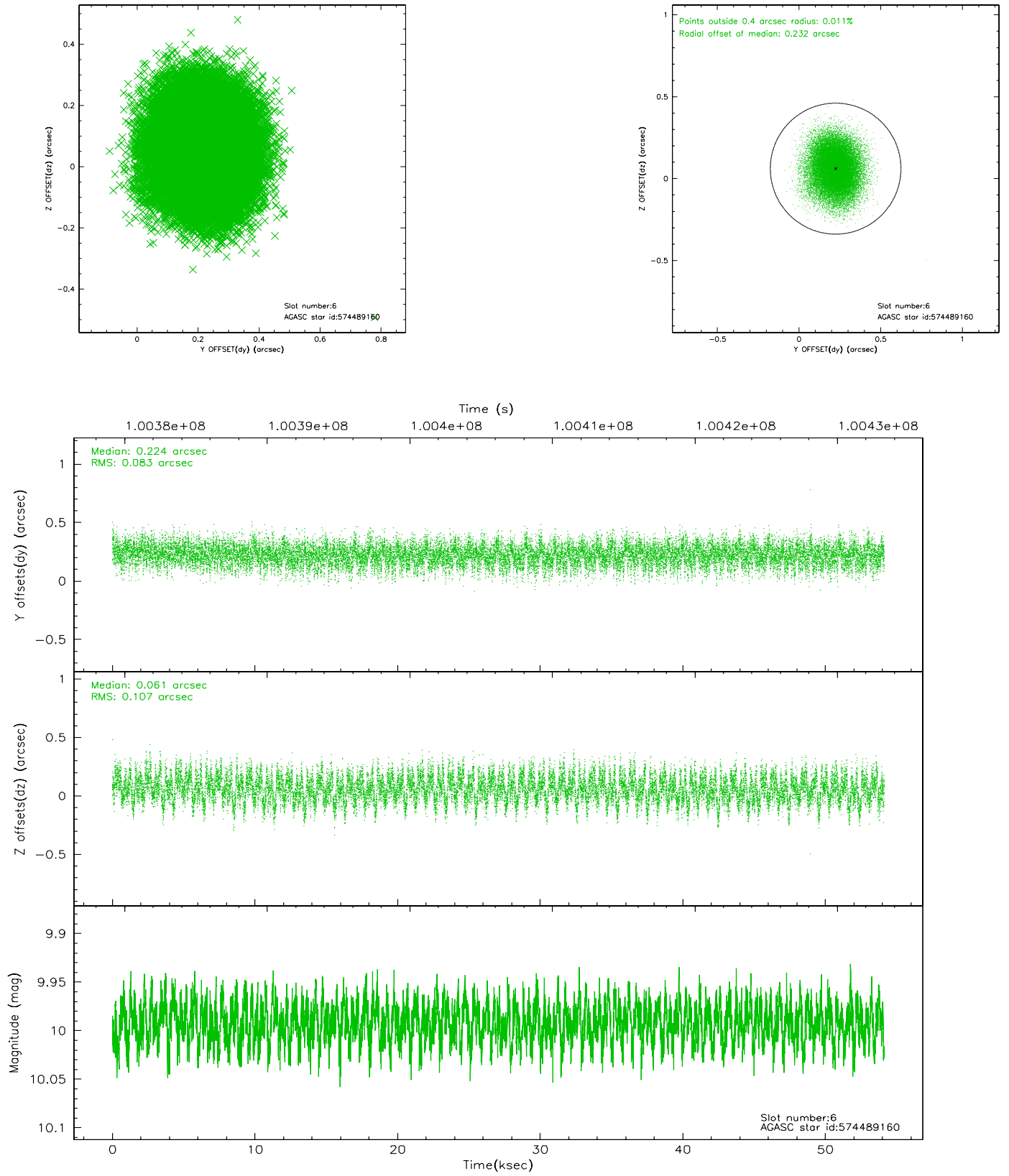
2.4.2 Slot 4



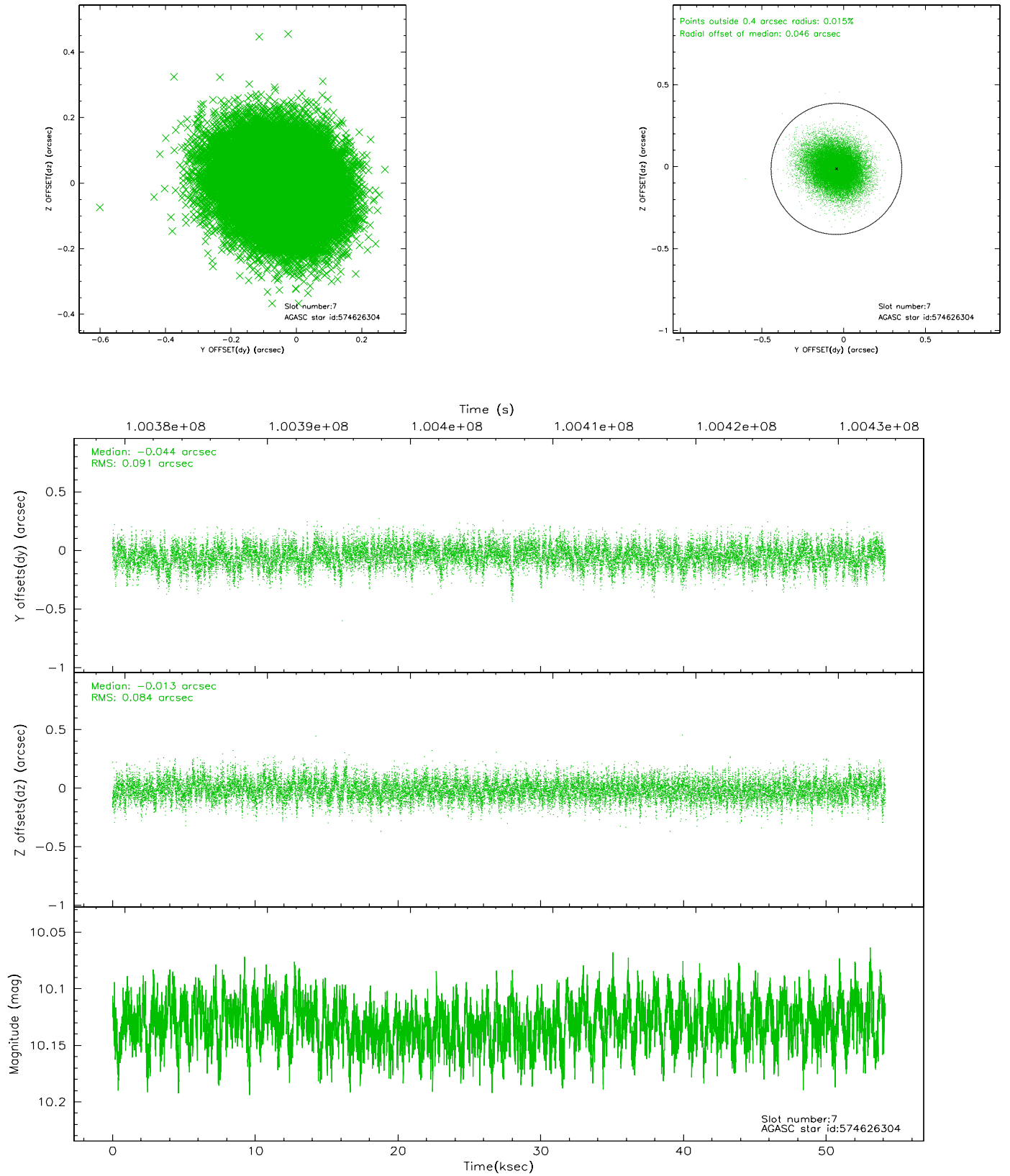
2.4.3 Slot 5



2.4.4 Slot 6

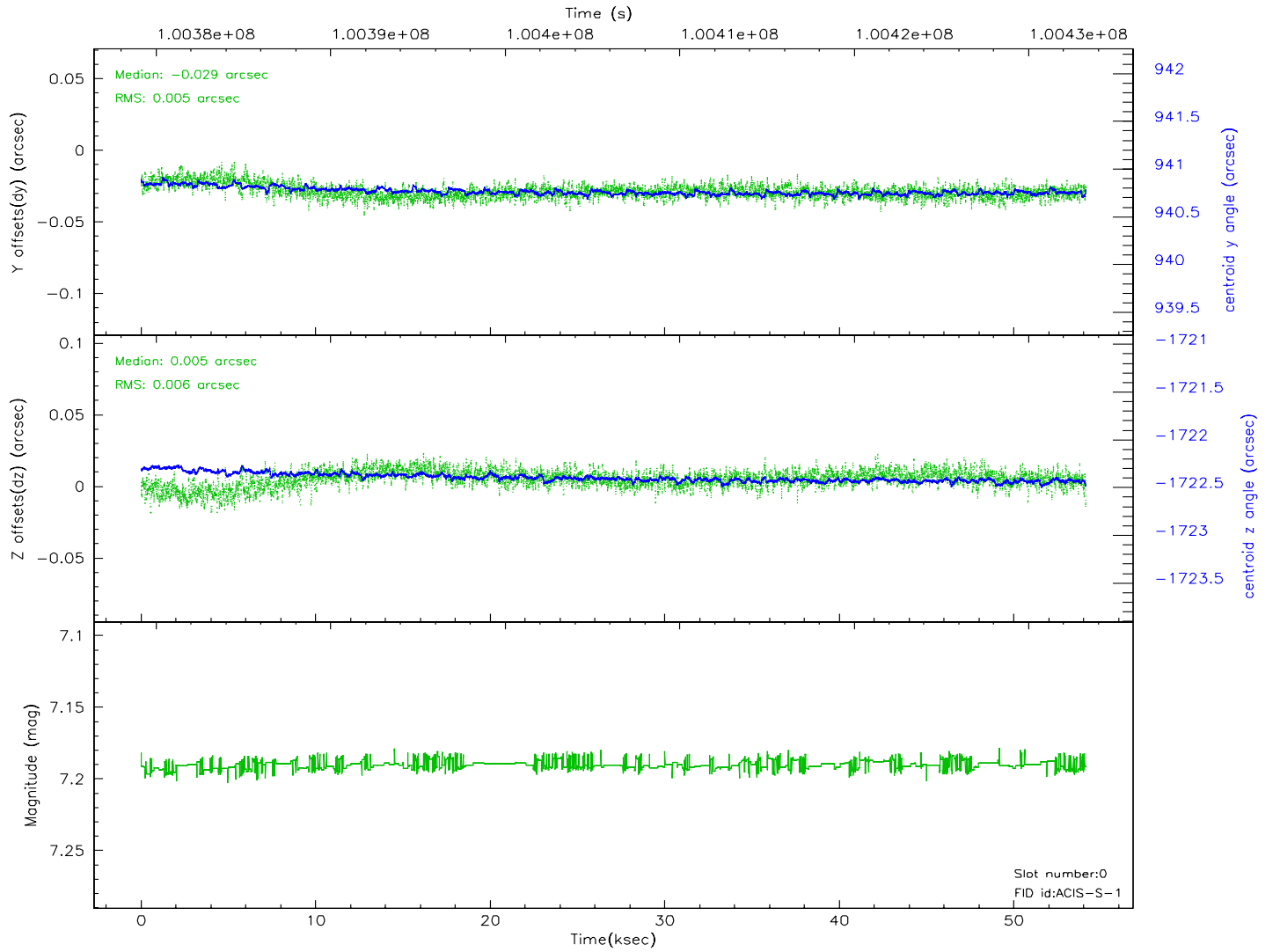
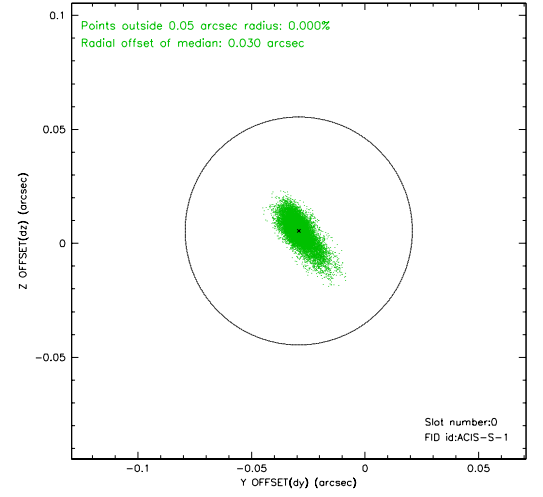
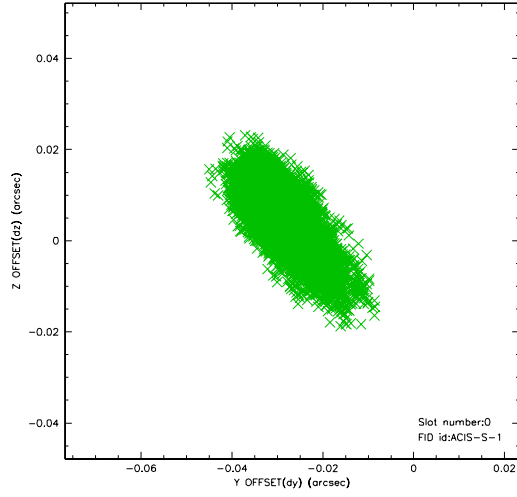


2.4.5 Slot 7

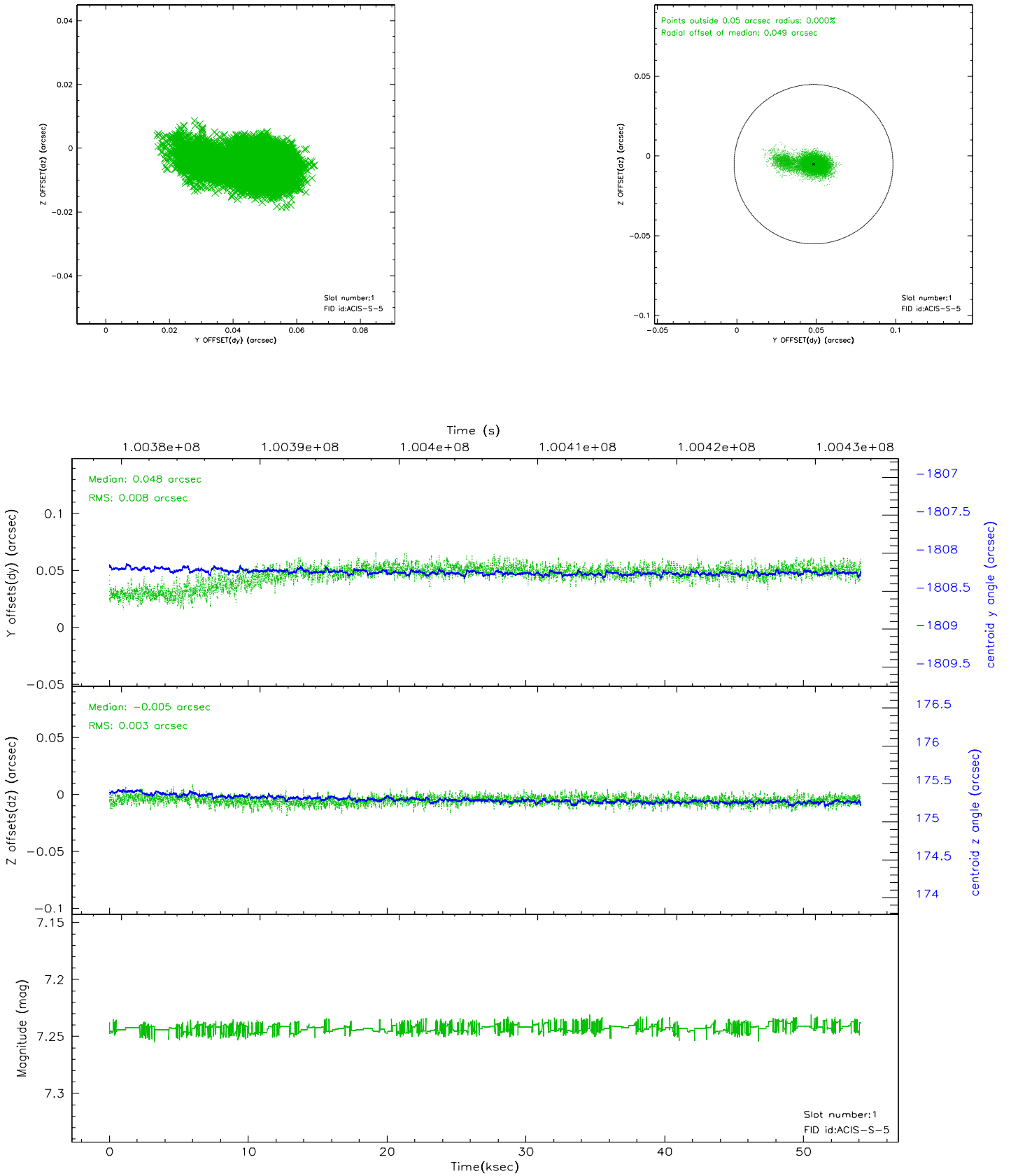


2.5 FID Slots

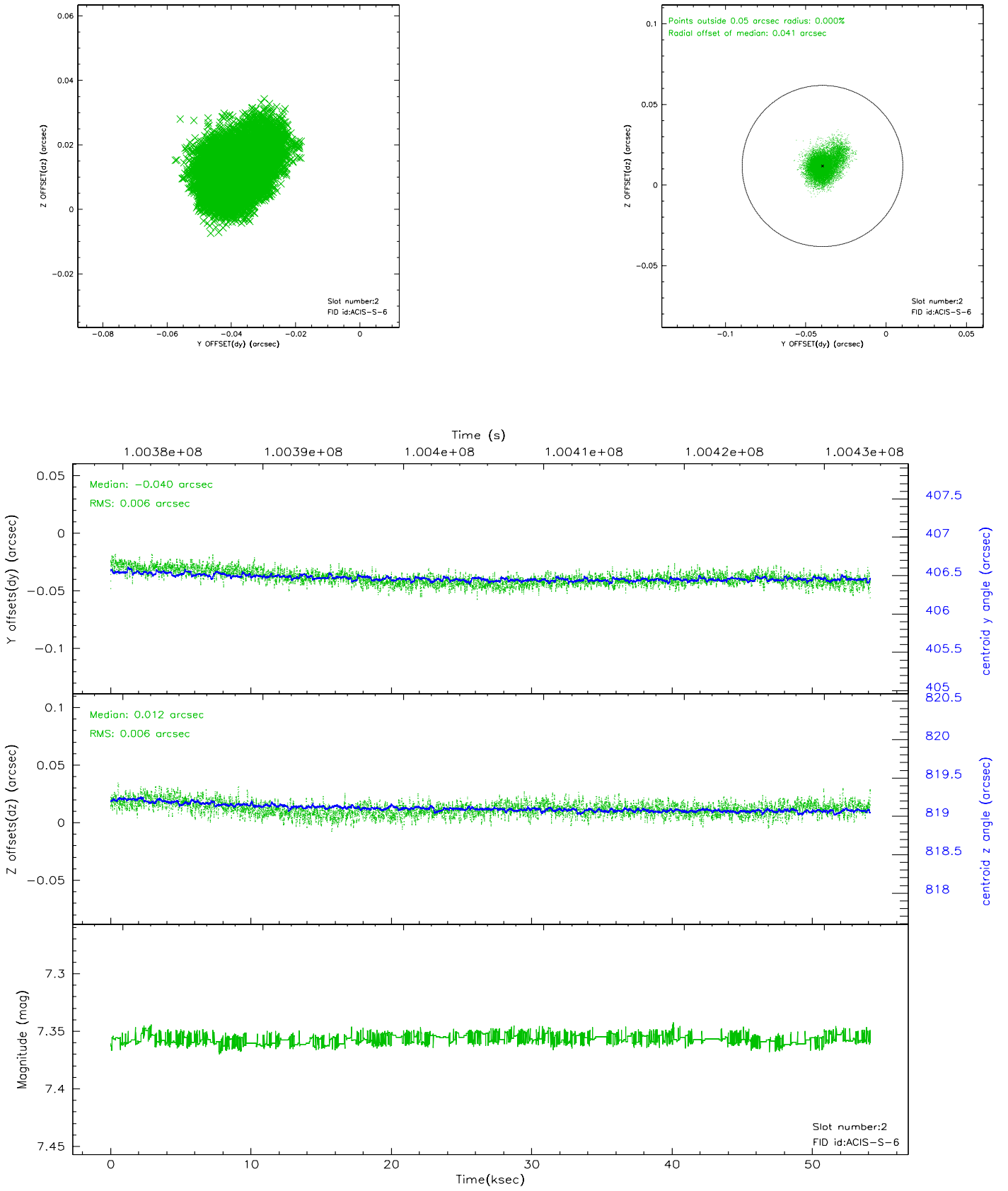
2.5.1 Slot 0



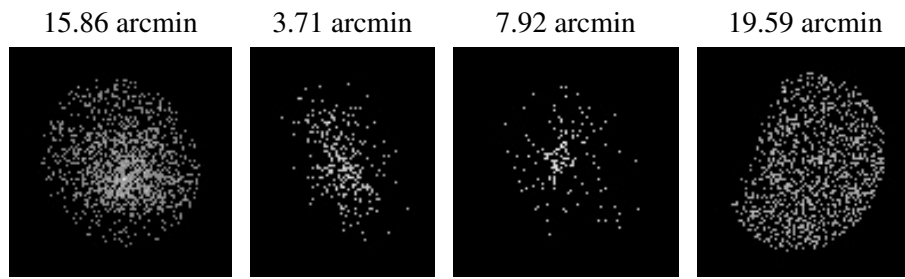
2.5.2 Slot 1



2.5.3 Slot 2



3 Point Sources



A Summary

A.1 Status

V&V Scientist	Jen Lauer
V&V Date (YYYY-MM-DD)	2006.11.08
V&V Edition	1
V&V Disposition and Status	OK
V&V Charge Time	54.141

A.2 Comments

Roll constraint met.