

V&V Reference Report

L2 ASCDS Version : 7.6.10

Observation 1956 - L2 Version 001
Chandra X-Ray Center

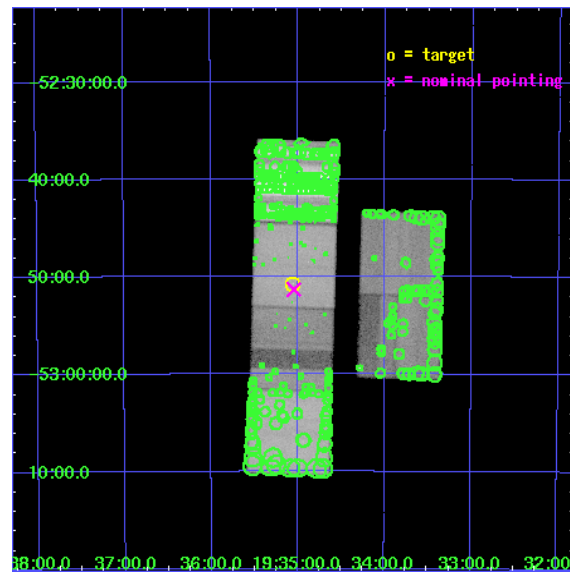
L2 Processing Date : Jan 13 2007

Contents

1	Front	2
2	OBI	3
2.1	OBI	3
2.1.1	Images	3
2.1.2	Bias	3
2.1.3	Parameters	4
2.1.4	Events	4
2.2	Compared Parameters	5
2.3	Aspect	6
2.4	Star Slots	9
2.4.1	Slot 3	9
2.4.2	Slot 4	10
2.4.3	Slot 5	11
2.4.4	Slot 6	12
2.4.5	Slot 7	13
2.5	FID Slots	14
2.5.1	Slot 0	14
2.5.2	Slot 1	15
2.5.3	Slot 2	16
3	Point Sources	17
A	Summary	18
A.1	Status	18
A.2	Comments	18

1 Front

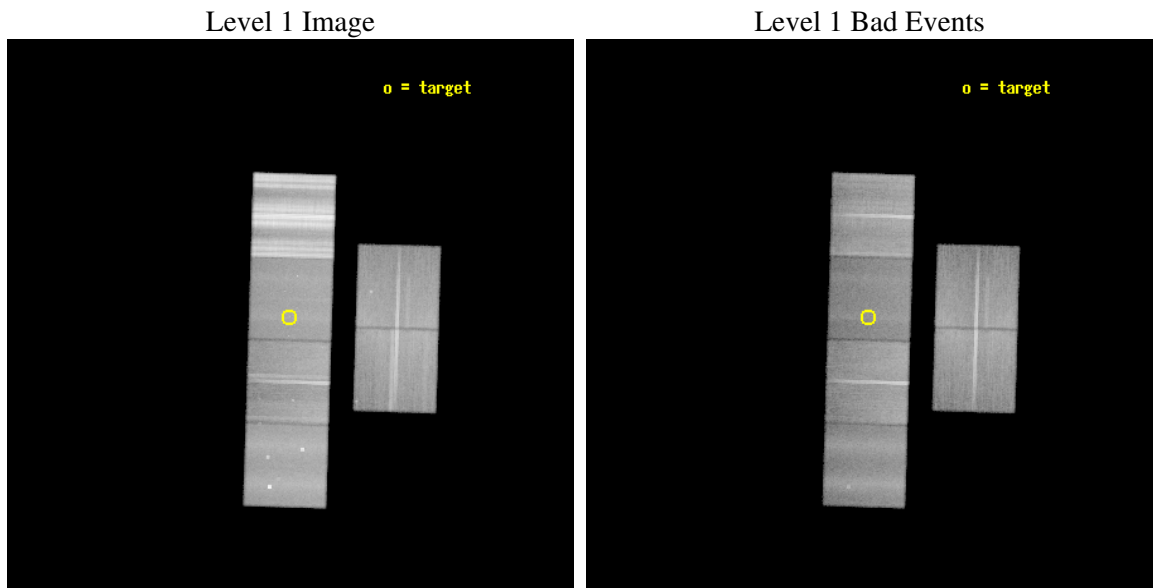
seq_num	500133
obs_id	1956
title	PROBING THE GRB-SN CONNECTION WITH CHANDRA
observer	Dr Chryssa Kouveliotou
object	SN1998BW
dtcycle	0
cycle	P
ra_targ	293.76375
dec_targ	-52.845778
ra_nom	293.76136162917
dec_nom	-52.855405991213
roll_nom	271.73050541766
revision	2
ontime	48272.000044957
livetime	47660.750914479
ontime2	48272.000044957
ontime3	48268.759114623
ontime5	48272.000044957
ontime6	48268.759084702
ontime7	48272.000044957
ontime8	48272.000044957
l2events	1237543



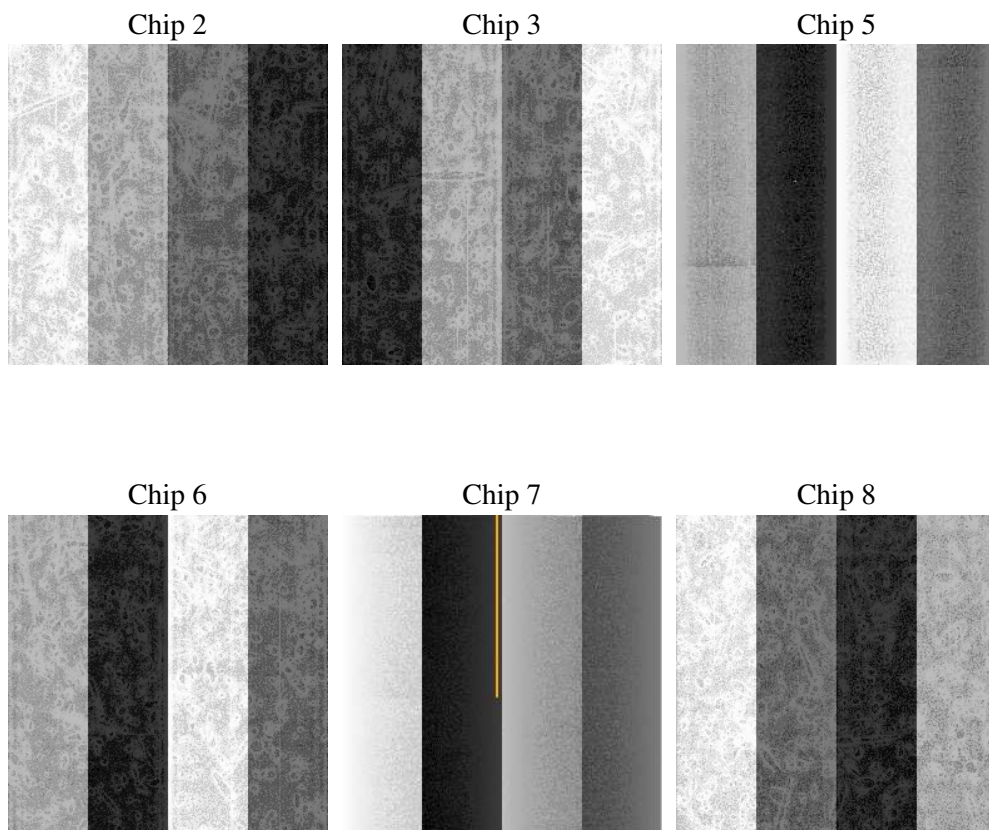
2 OBI

2.1 OBI

2.1.1 Images



2.1.2 Bias



2.1.3 Parameters

obi_num	5
ascdsver	7.6.10
caldbver	3.3.0
date	2007-01-13T11:57:24
revision	2

sched_exp_time	48240.815000
ontime	48272.000044957
ontime2	48272.000044957
ontime3	48268.759114623
ontime5	48272.000044957
ontime6	48268.759084702
ontime7	48272.000044957
ontime8	48272.000044957
l1events	3724052

2.1.4 Events

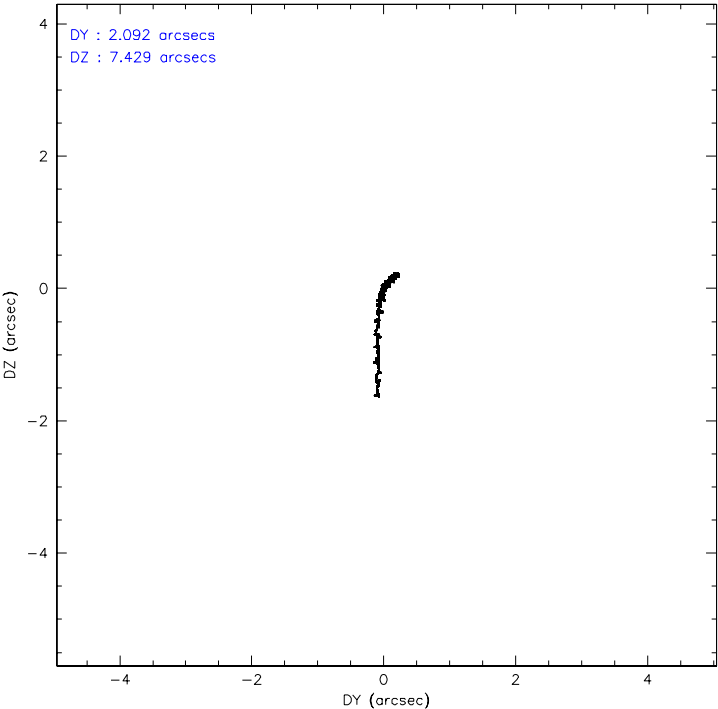
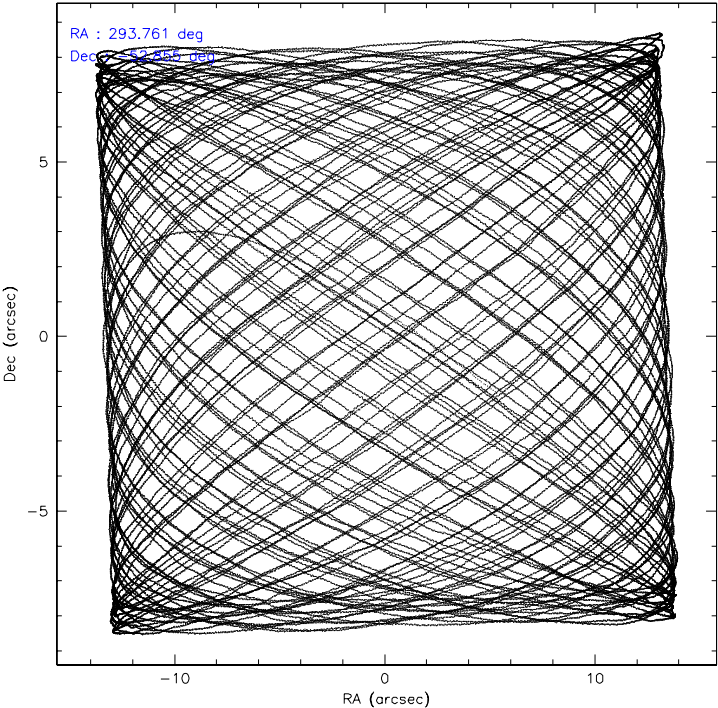
	ccd 2	ccd 3	ccd 5	ccd 6	ccd 7	ccd 8
level 1 events	493411	464565	563096	484890	467273	1250817
rejected events	375351	352389	290345	366709	243499	426615
rejected %	76%	75%	51%	75%	52%	34%

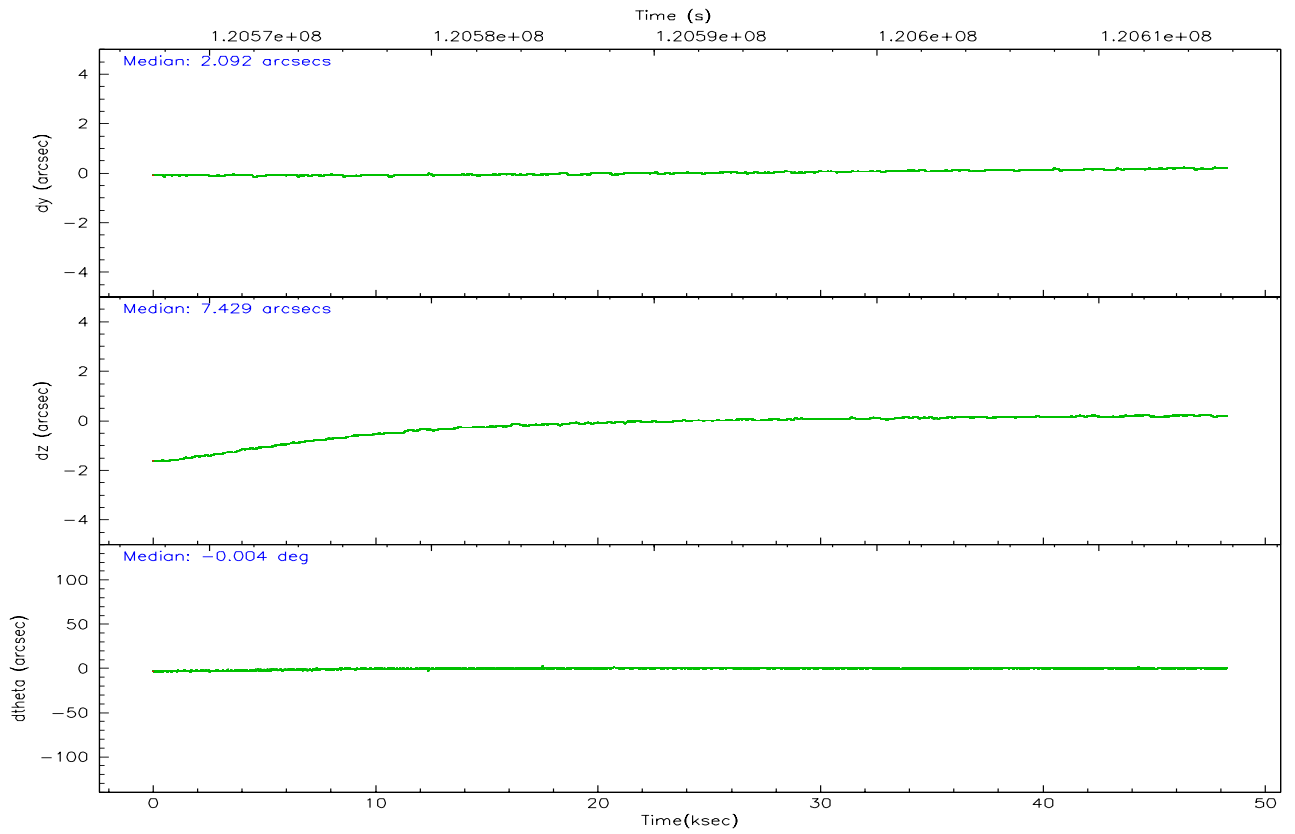
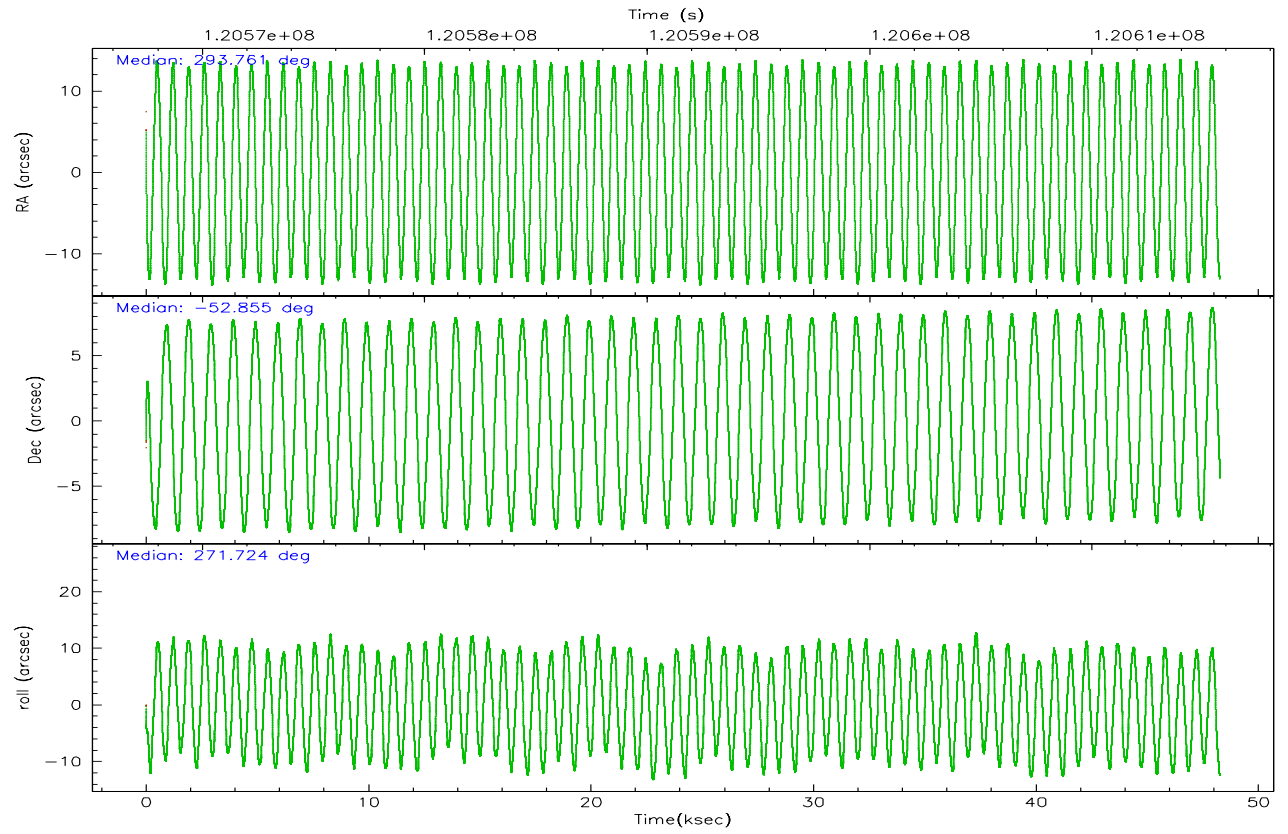
	ccd 2	ccd 3	ccd 5	ccd 6	ccd 7	ccd 8
grade 0 events	50804	36984	38045	48087	24460	316789
	10%	7%	6%	9%	5%	25%
grade 1 events	386	213	1964	295	719	2712
	0%	0%	0%	0%	0%	0%
grade 2 events	30769	37188	79781	36331	47833	88867
	6%	8%	14%	7%	10%	7%
grade 3 events	3675	4122	18063	4481	20472	165134
	0%	0%	3%	0%	4%	13%
grade 4 events	7495	5296	17845	4751	20830	145592
	1%	1%	3%	0%	4%	11%
grade 5 events	10779	11409	37876	12640	39958	21853
	2%	2%	6%	2%	8%	1%
grade 6 events	25662	28920	120053	24873	110949	110044
	5%	6%	21%	5%	23%	8%
grade 7 events	363841	340433	249469	353432	202052	399826
	73%	73%	44%	72%	43%	31%

2.2 Compared Parameters

Parameter	Planned	Actual	Parameter	Planned	Actual
Instrument	ACIS	ACIS	Obspar format version number	6	6
Detector	ACIS-235678	ACIS-235678	Obspar file type	PREDICTED	ACTUAL
Grating	NONE	NONE	Obspar update status	NONE	UPDATED
Data mode	FAINT	FAINT	Number of optional ACIS chips dropped	0	0
Observation mode	POINTING	POINTING	On-chip summing requested	N	N
Pointing RA	293.737195	293.7613616291677	Subarray requested	NONE	NONE
Pointing Dec	-52.832380	-52.85540599121325	Alternating exposures requested	N	N
Pointing Roll	271.554624	271.7305054176636	Primary exposure time	0.000000	3.2
SIM focus pos (mm)	-0.684267	-0.6828225247311905			
SIM defocus (mm)	0	0.001444936568705701			
SIM translation stage pos (mm)	-190.132523	-190.1400660498719			
SIM translation stage offset (mm)	0	0.00754346686406393			
Observation start time	120567510.184000	120566470.29789			
Observation start date	2001-10-27T10:57:26	2001-10-27T10:41:10			
Observation end time	120615750.184000	120616064.92486			
Observation end date	2001-10-28T00:21:26	2001-10-28T00:27:44			
Read mode	TIMED	TIMED			

2.3 Aspect



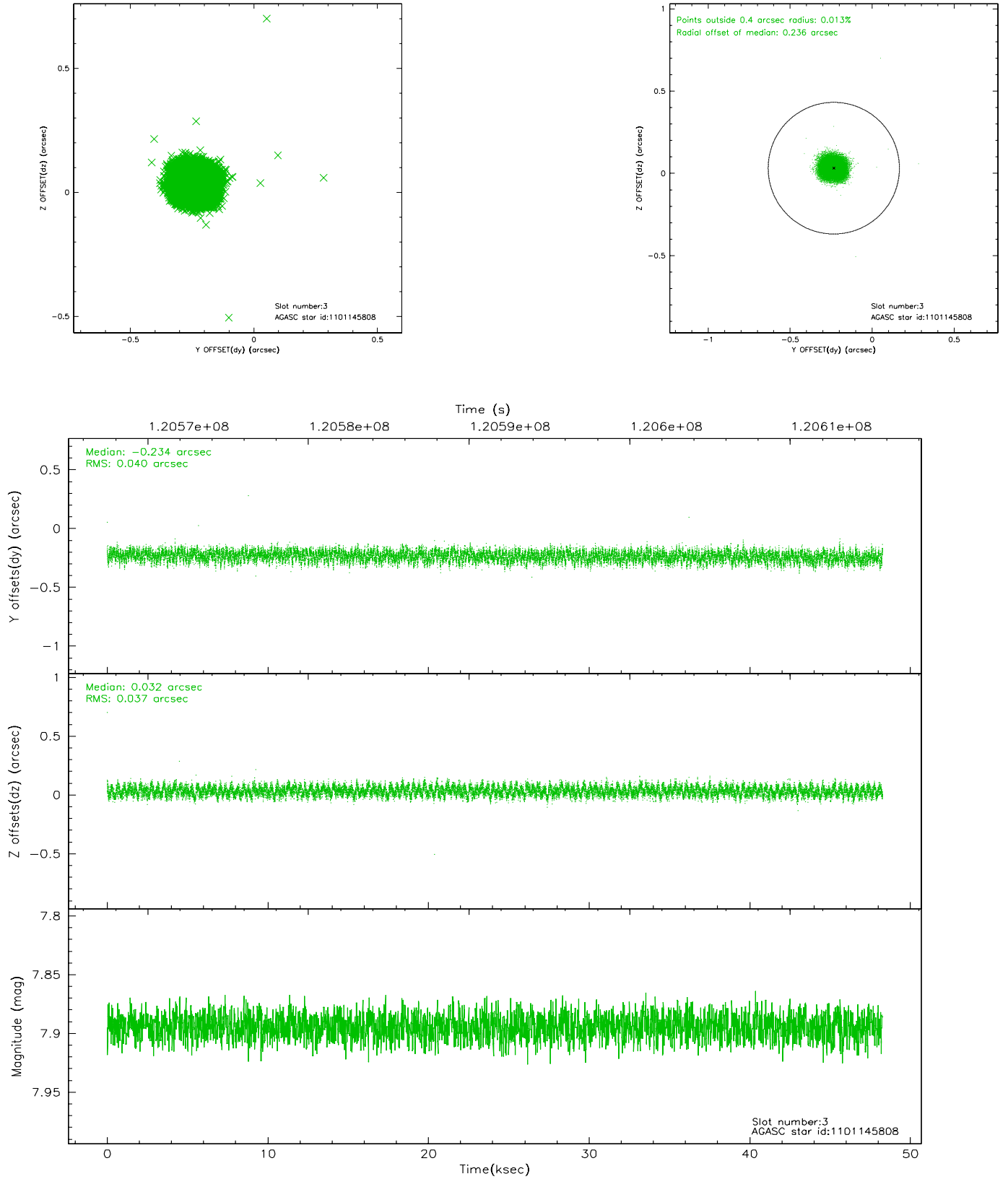


Slot Statistics

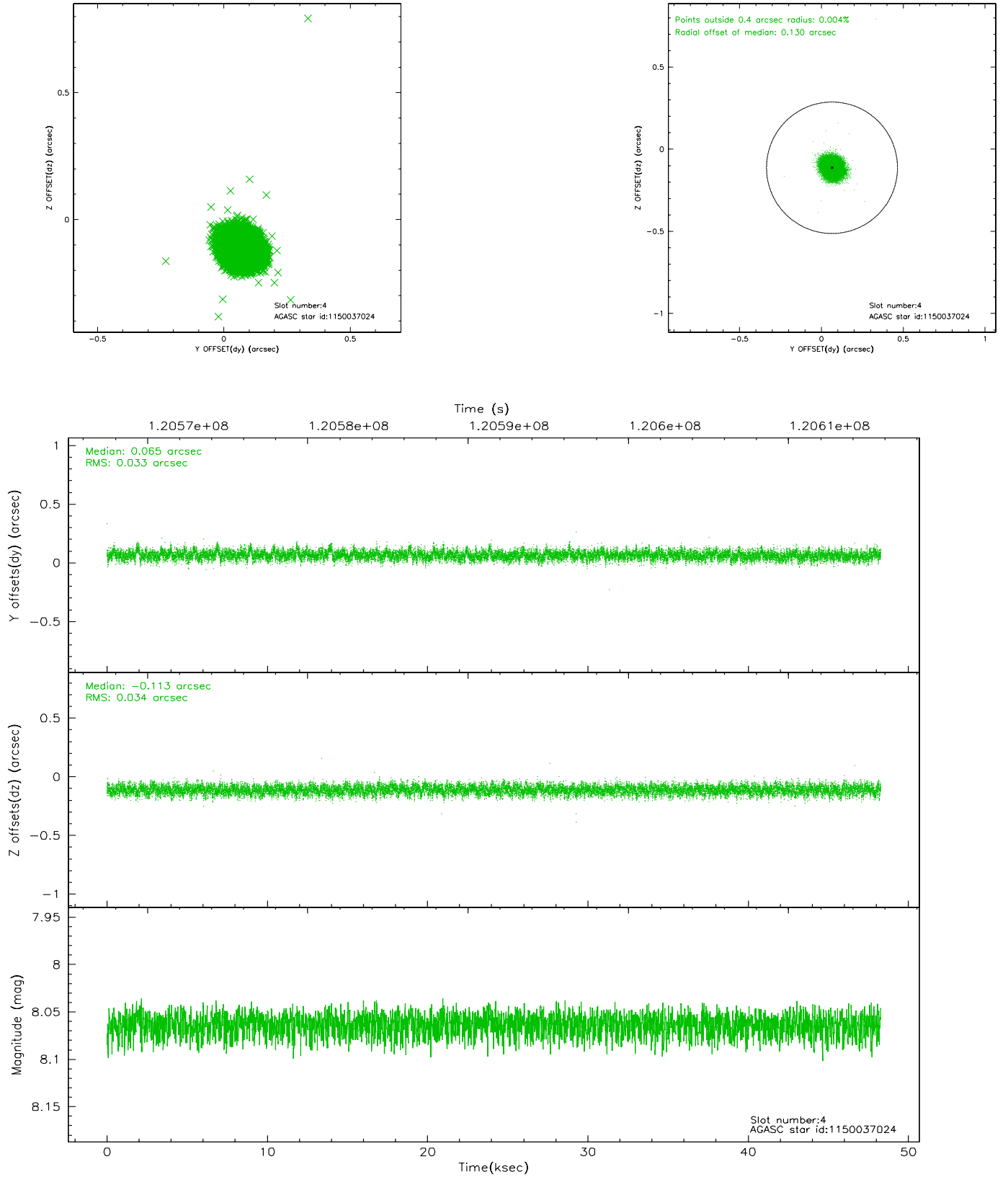
slot	status	id	mag	n_pts	med_dy	med_dz	dr1	dr2	ra	dec	mean_y	mean_z
0	FID	ACIS-S-2	7.11	11775	0.020	0.027	0.009	0.029	0.000000	0.000000	-754.70	-1728.36
1	FID	ACIS-S-4	7.20	11775	-0.043	-0.007	0.007	0.012	0.000000	0.000000	2158.51	180.12
2	FID	ACIS-S-6	7.35	11775	-0.004	-0.012	0.010	0.020	0.000000	0.000000	407.23	817.49
3	GUIDE	1101145808	7.89	23548	-0.234	0.032	0.059	0.091	293.617600	-52.269429	-2031.97	-208.01
4	GUIDE	1150037024	8.06	23547	0.065	-0.113	0.050	0.080	293.877438	-53.119506	1042.87	275.41
5	GUIDE	1148327760	8.24	23543	0.062	-0.031	0.068	0.110	292.965317	-53.360492	1865.94	-1708.81
6	GUIDE	1148328048	8.27	23547	0.053	-0.034	0.061	0.097	292.901720	-53.257662	1493.72	-1839.76
7	GUIDE	1150040320	9.94	23531	0.059	0.149	0.113	0.183	294.654423	-53.358370	1960.06	1919.15

2.4 Star Slots

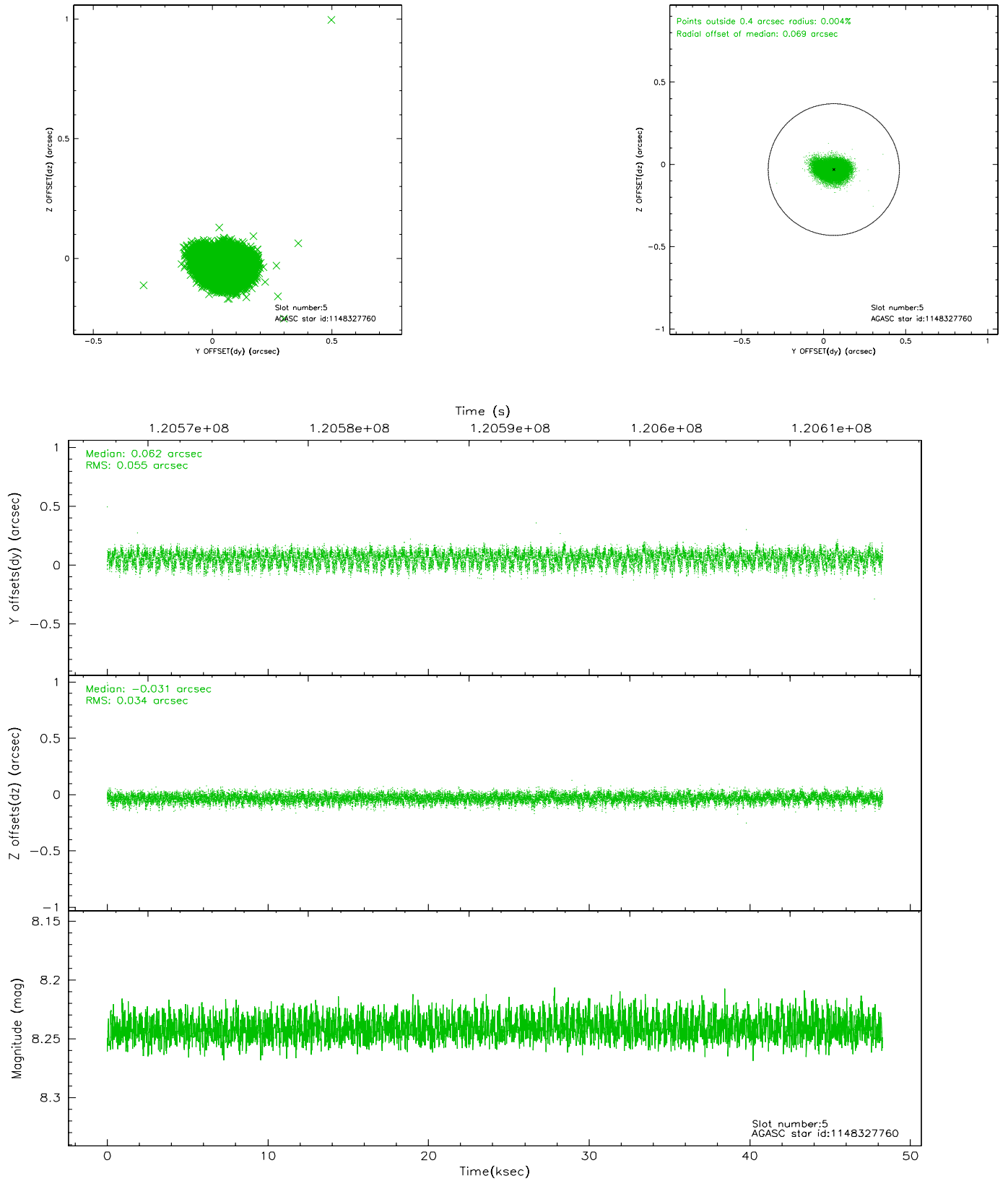
2.4.1 Slot 3



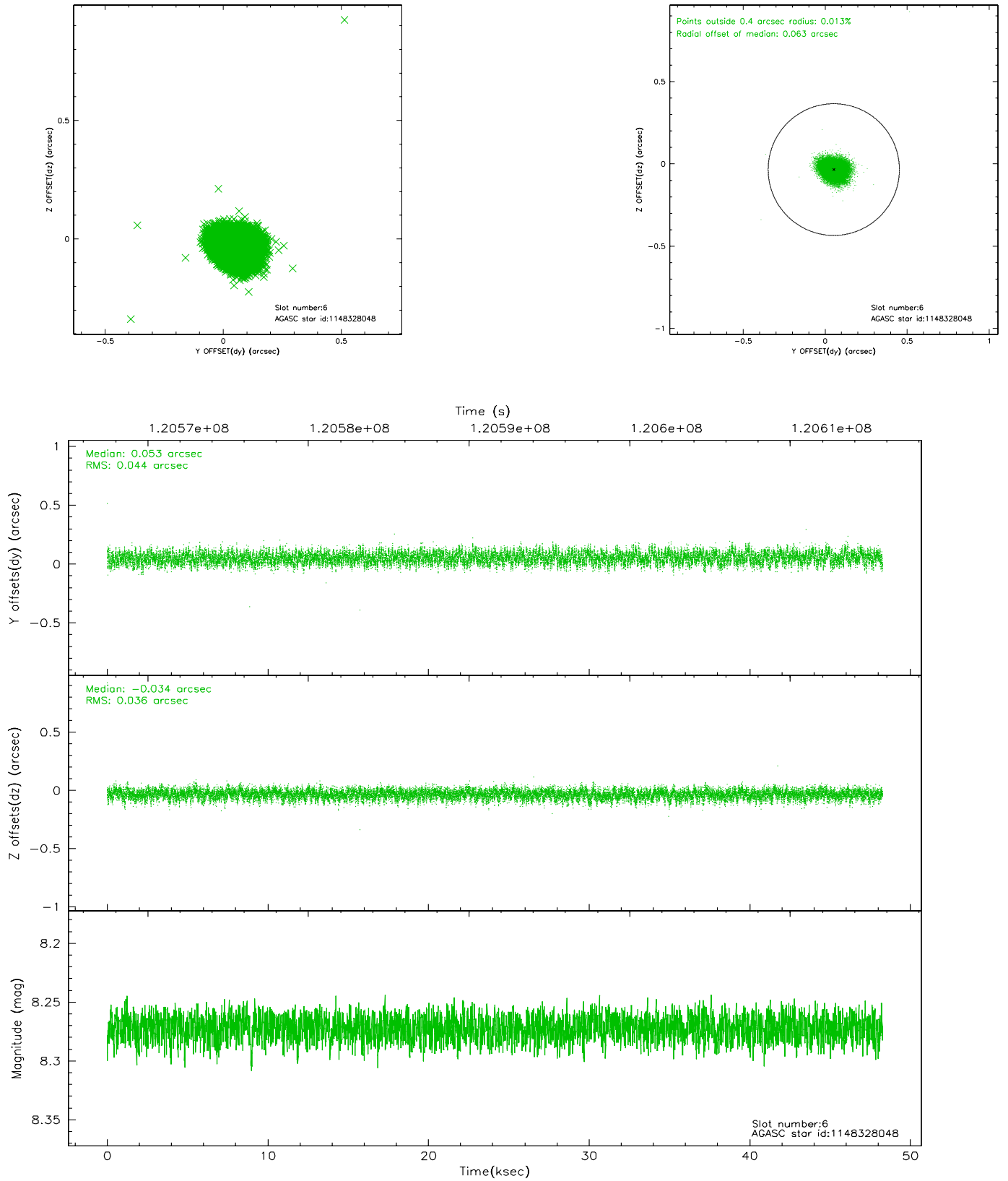
2.4.2 Slot 4



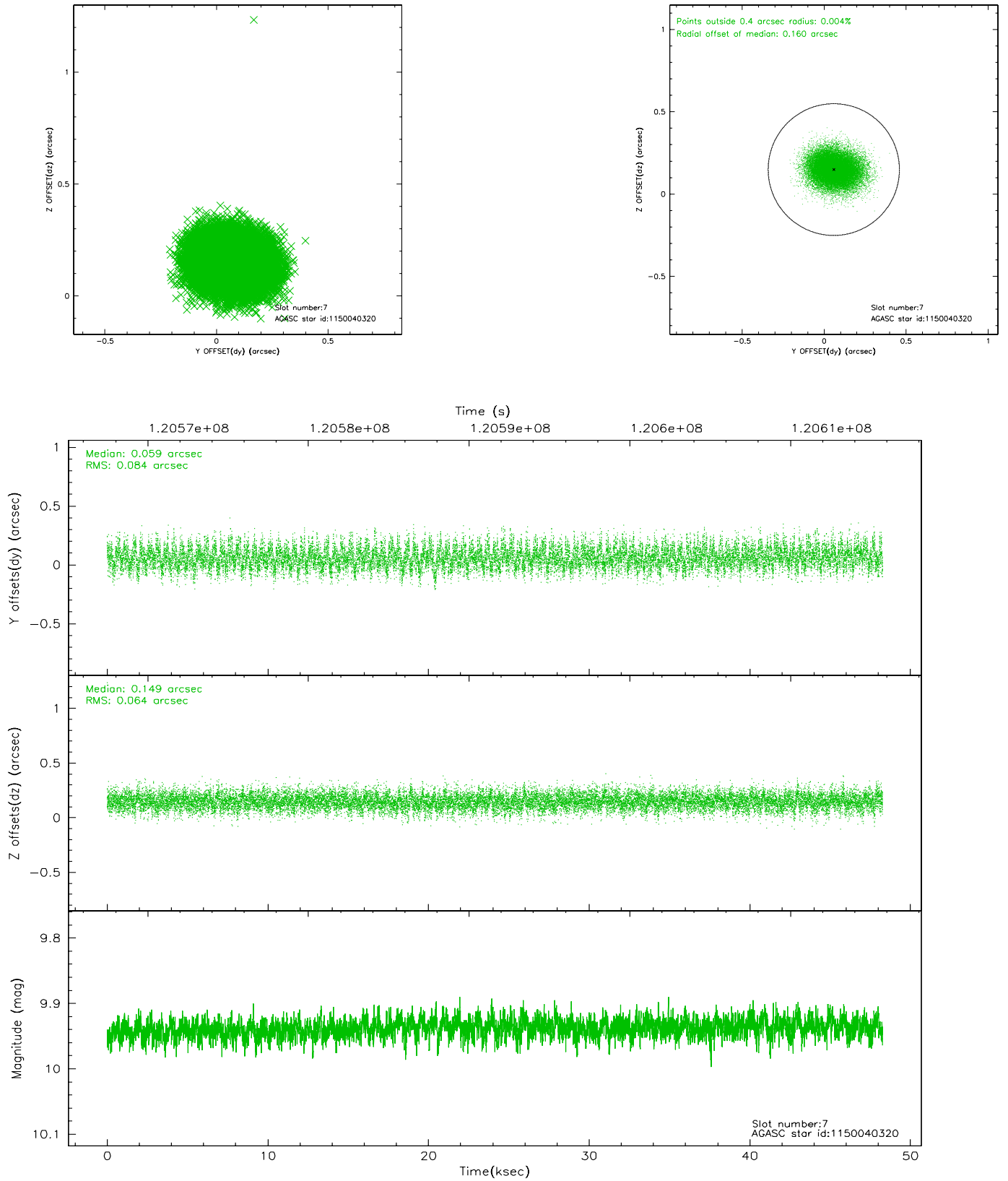
2.4.3 Slot 5



2.4.4 Slot 6

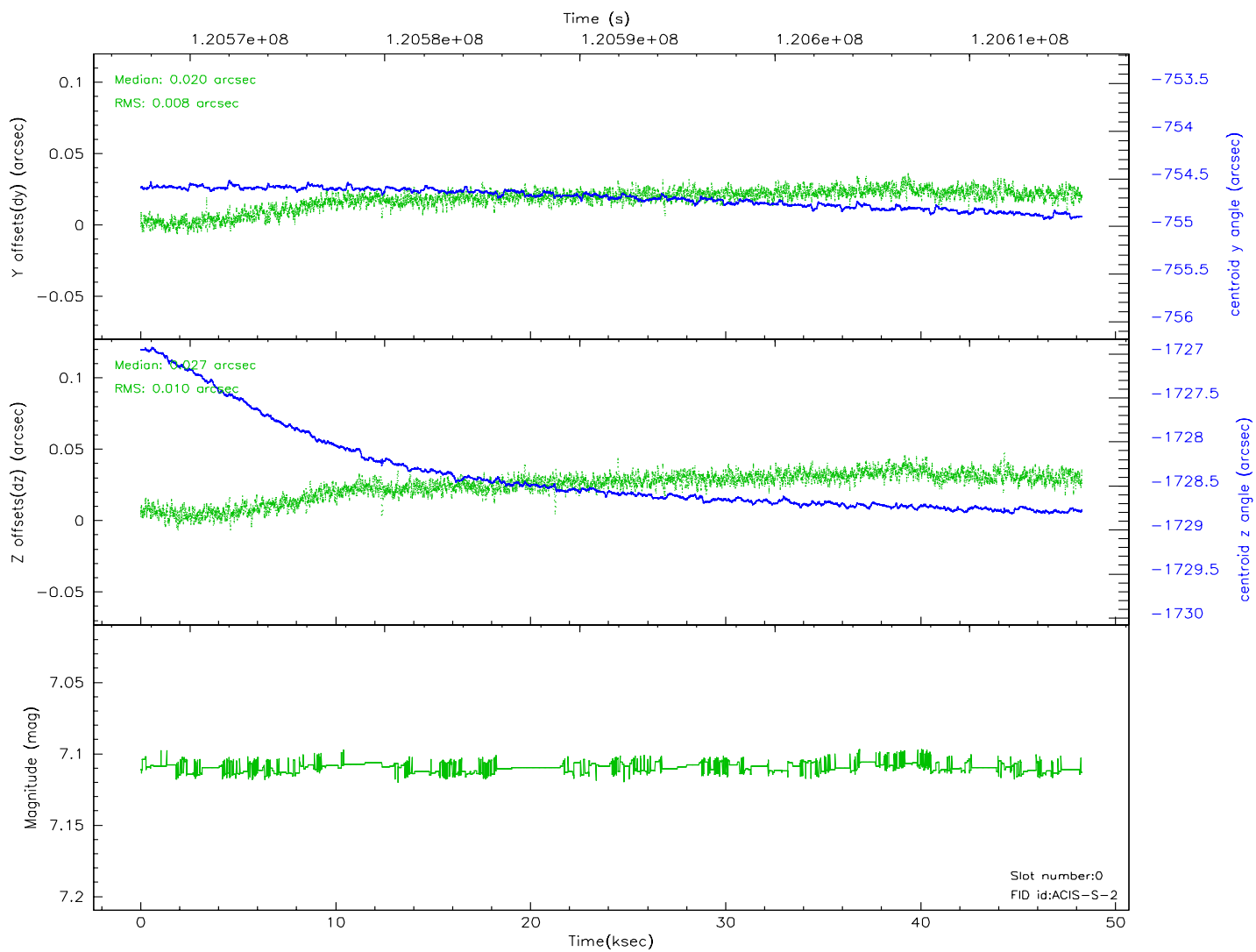
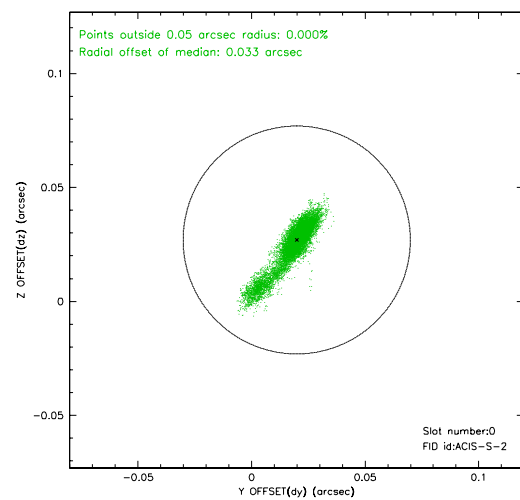
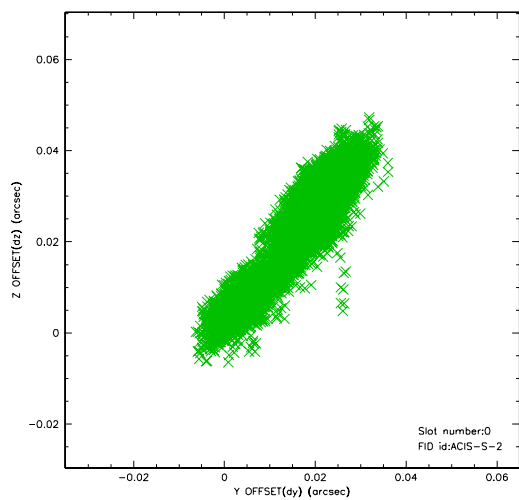


2.4.5 Slot 7

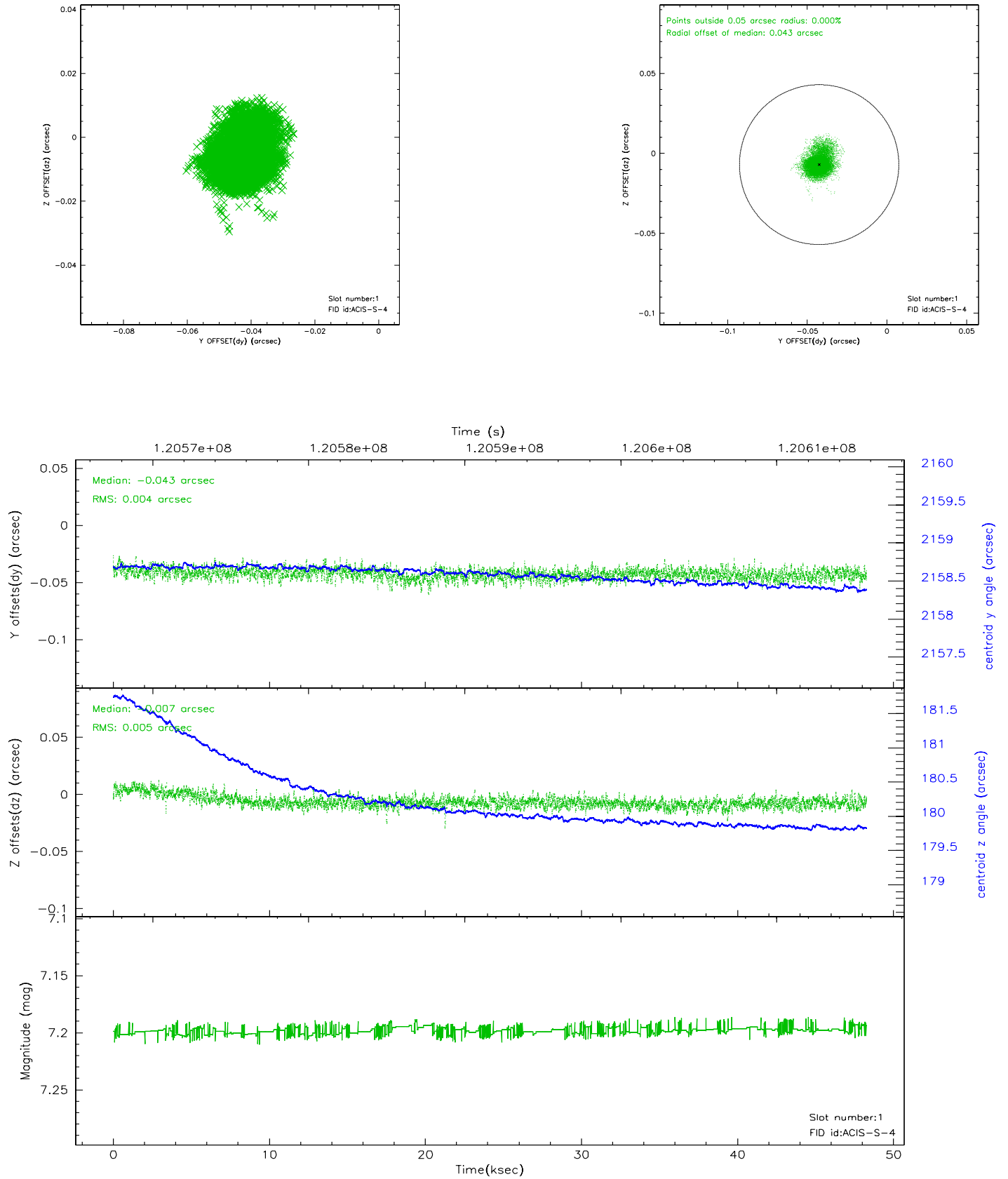


2.5 FID Slots

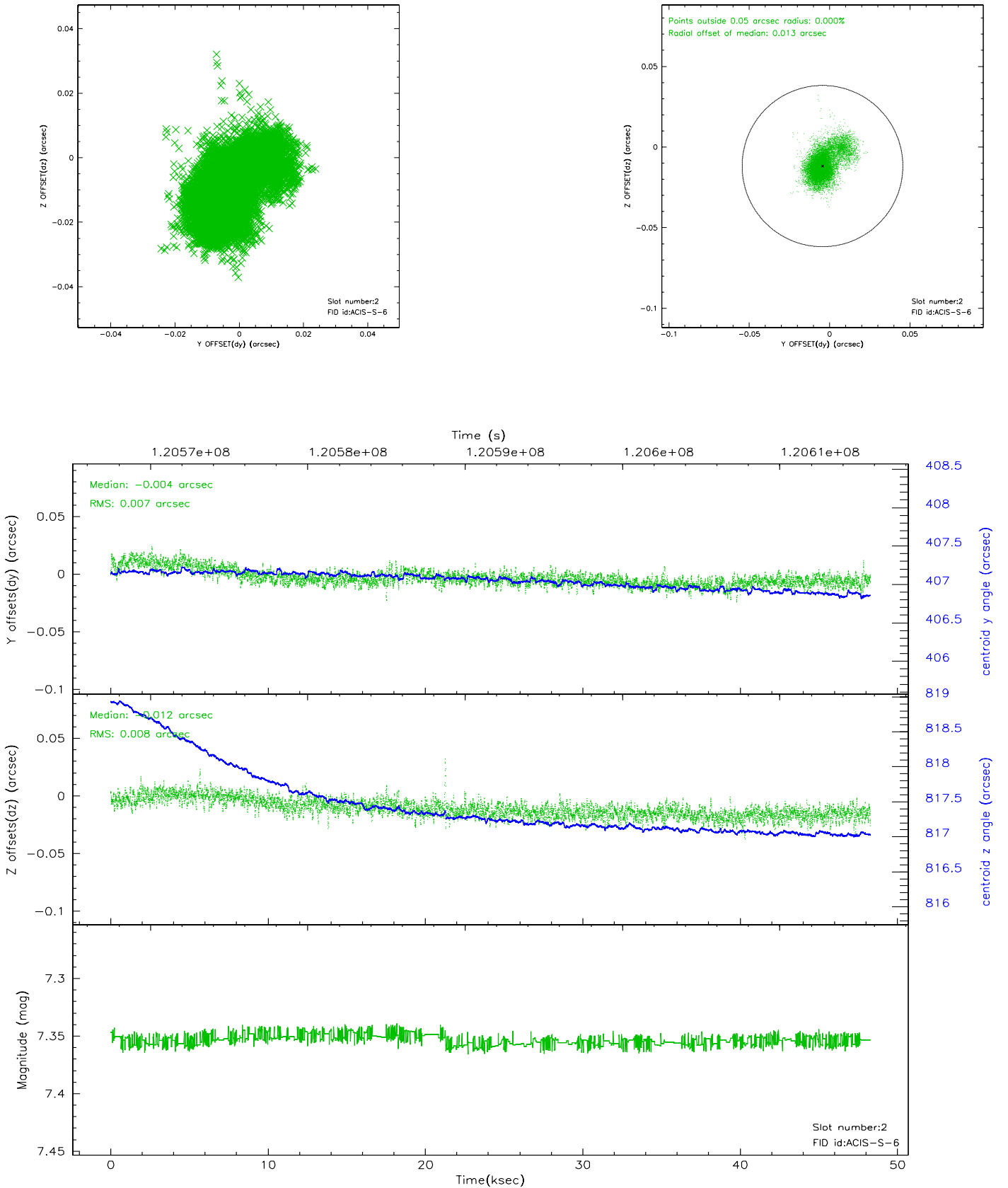
2.5.1 Slot 0



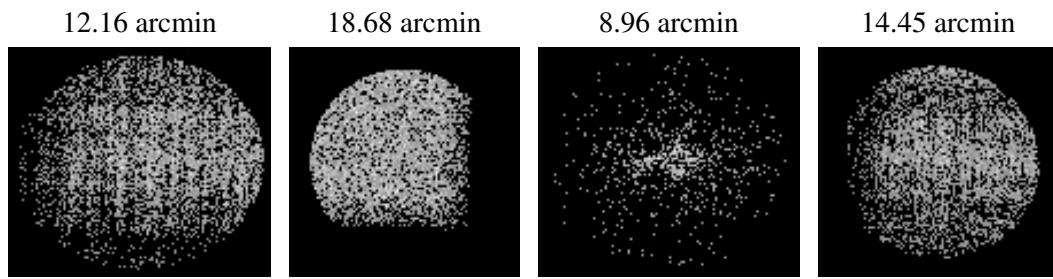
2.5.2 Slot 1



2.5.3 Slot 2



3 Point Sources



A Summary

A.1 Status

V&V Scientist	Beth Sundheim
V&V Date (YYYY-MM-DD)	2007.01.16
V&V Edition	1
V&V Disposition and Status	OK
V&V Charge Time	48.272

A.2 Comments