

# V&V Reference Report

## L2 ASCDS Version : 7.6.9

Observation 1866 - L2 Version 001  
Chandra X-Ray Center

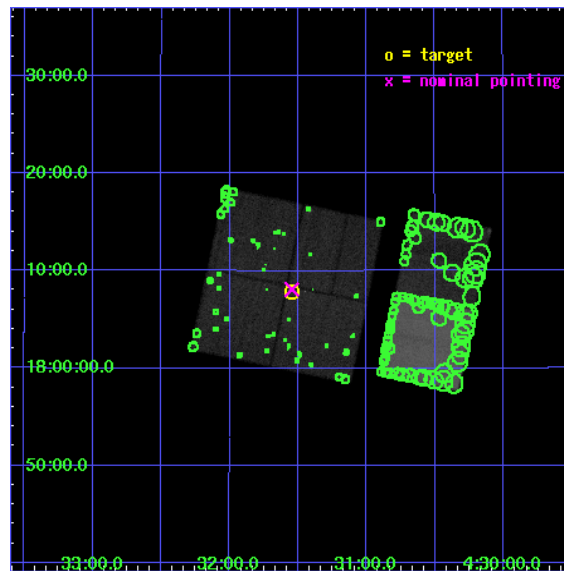
L2 Processing Date : Dec 15 2006

## Contents

<b>1</b>	<b>Front</b>	<b>2</b>
<b>2</b>	<b>OBI</b>	<b>3</b>
2.1	OBI . . . . .	3
2.1.1	Images . . . . .	3
2.1.2	Bias . . . . .	3
2.1.3	Parameters . . . . .	4
2.1.4	Events . . . . .	4
2.2	Compared Parameters . . . . .	5
2.3	Aspect . . . . .	6
2.4	Star Slots . . . . .	9
2.4.1	Slot 3 . . . . .	9
2.4.2	Slot 4 . . . . .	10
2.4.3	Slot 5 . . . . .	11
2.4.4	Slot 6 . . . . .	12
2.4.5	Slot 7 . . . . .	13
2.5	FID Slots . . . . .	14
2.5.1	Slot 0 . . . . .	14
2.5.2	Slot 1 . . . . .	15
2.5.3	Slot 2 . . . . .	16
<b>3</b>	<b>Point Sources</b>	<b>17</b>
<b>A</b>	<b>Summary</b>	<b>18</b>
A.1	Status . . . . .	18
A.2	Comments . . . . .	18

# 1 Front

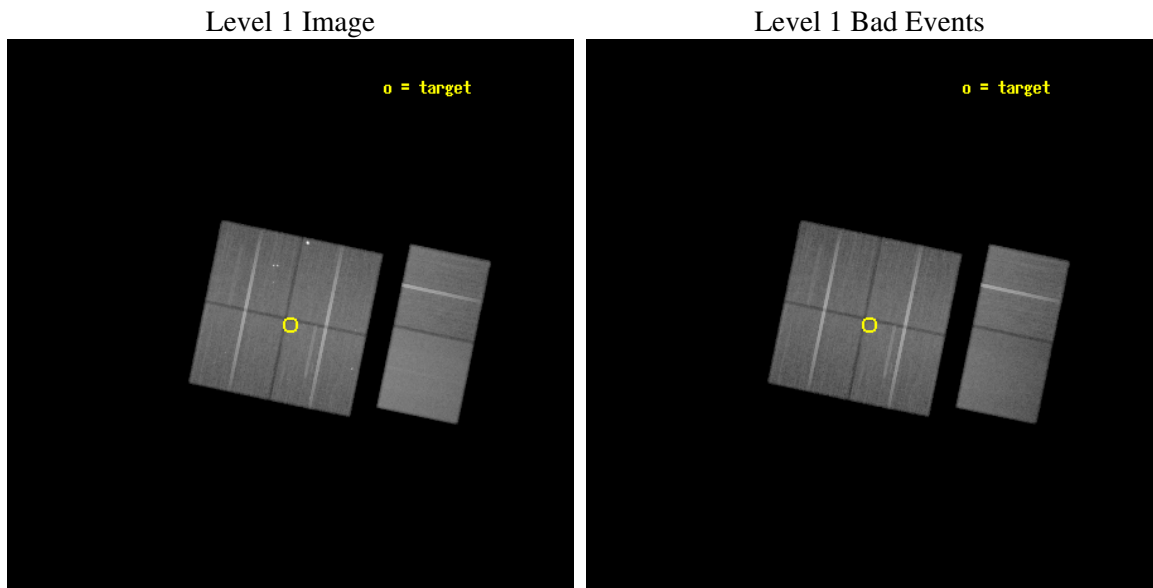
seq_num	200094
obs_id	1866
title	X-RAYS FROM THE NEAREST PROTOSTARS: L1551
observer	PROF. JOHN BALLY
object	LYNDS 1551
dtcycle	0
cycle	P
ra_targ	67.885417
dec_targ	18.130278
ra_nom	67.88639232774
dec_nom	18.134919936083
roll_nom	101.76553465059
revision	2
ontime	79939.077163786
livetime	78926.840435204
ontime0	79939.077173784
ontime1	79935.836193636
ontime2	79935.836213529
ontime3	79939.077163786
ontime6	79942.318124041
ontime7	79939.077193692
l2events	529276



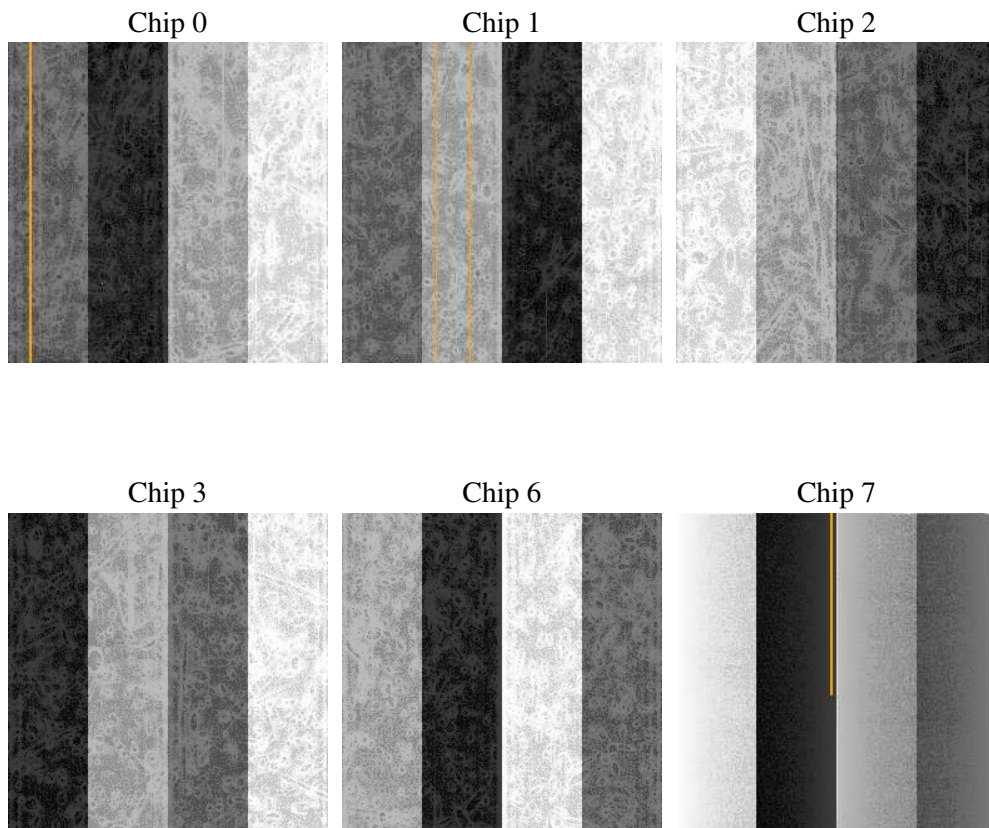
## 2 OBI

### 2.1 OBI

#### 2.1.1 Images



#### 2.1.2 Bias



### 2.1.3 Parameters

obi_num	1
ascdsver	7.6.9
caldsver	3.2.4
date	2006-12-15T19:02:28
revision	2

sched_exp_time	80000.000000
ontime	79942.430345118
ontime0	79942.430355117
ontime1	79939.189374968
ontime2	79939.189394861
ontime3	79942.430345118
ontime6	79945.671305373
ontime7	79942.430375025
l1events	3337178

### 2.1.4 Events

	ccd 0	ccd 1	ccd 2	ccd 3	ccd 6	ccd 7
level 1 events	498022	494520	556675	542759	563394	681808
rejected events	433010	430876	485805	482614	503131	422298
rejected %	86%	87%	87%	88%	89%	61%

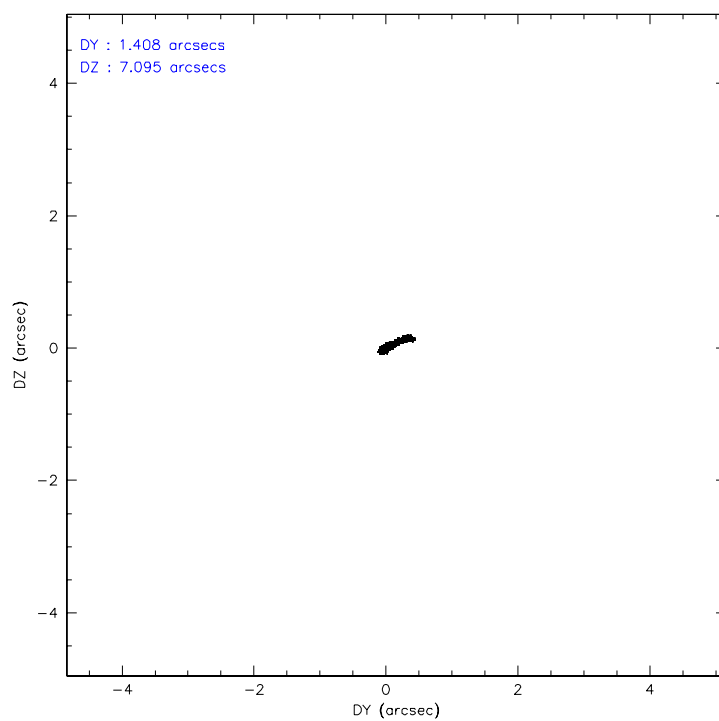
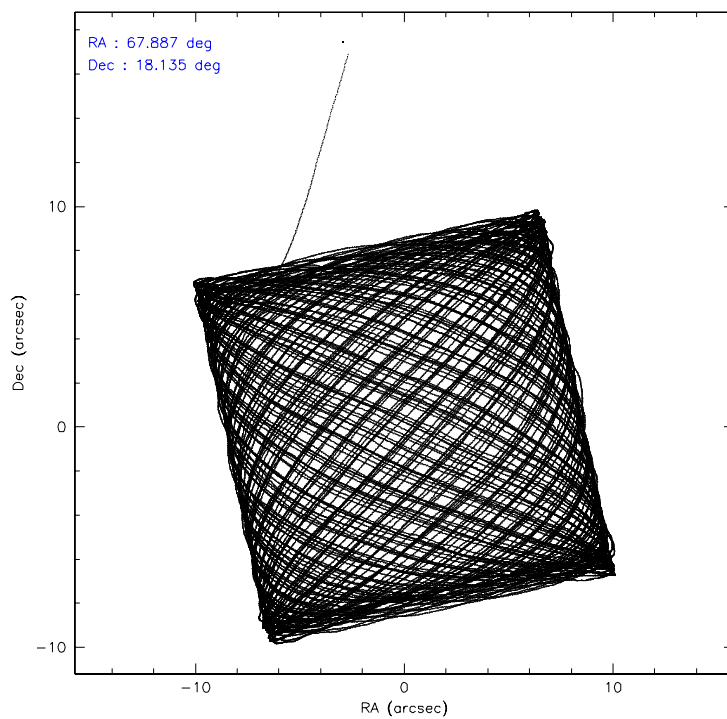
	ccd 0	ccd 1	ccd 2	ccd 3	ccd 6	ccd 7
grade 0 events	29031	25384	35205	25575	23315	14367
	5%	5%	6%	4%	4%	2%
grade 1 events	251	204	292	249	268	409
	0%	0%	0%	0%	0%	0%
grade 2 events	13295	12880	13590	12148	12376	63039
	2%	2%	2%	2%	2%	9%
grade 3 events	6153	6650	5836	5867	6303	13815
	1%	1%	1%	1%	1%	2%
grade 4 events	5746	6325	5908	5789	6066	13235
	1%	1%	1%	1%	1%	1%
grade 5 events	19221	20441	18366	21029	23277	46807
	3%	4%	3%	3%	4%	6%
grade 6 events	10790	12406	10333	10770	12209	155062
	2%	2%	1%	1%	2%	22%
grade 7 events	413535	410230	467145	461332	479580	375074
	83%	82%	83%	84%	85%	55%

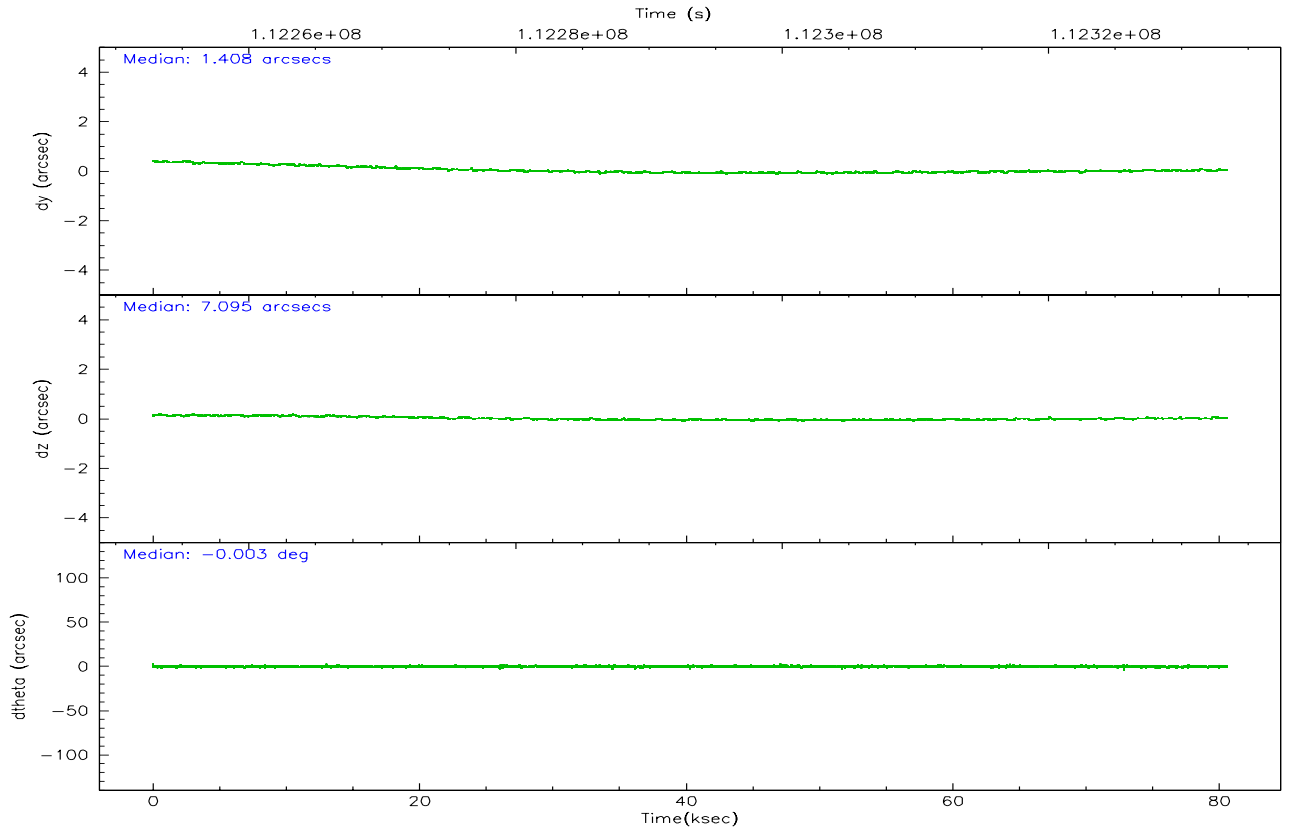
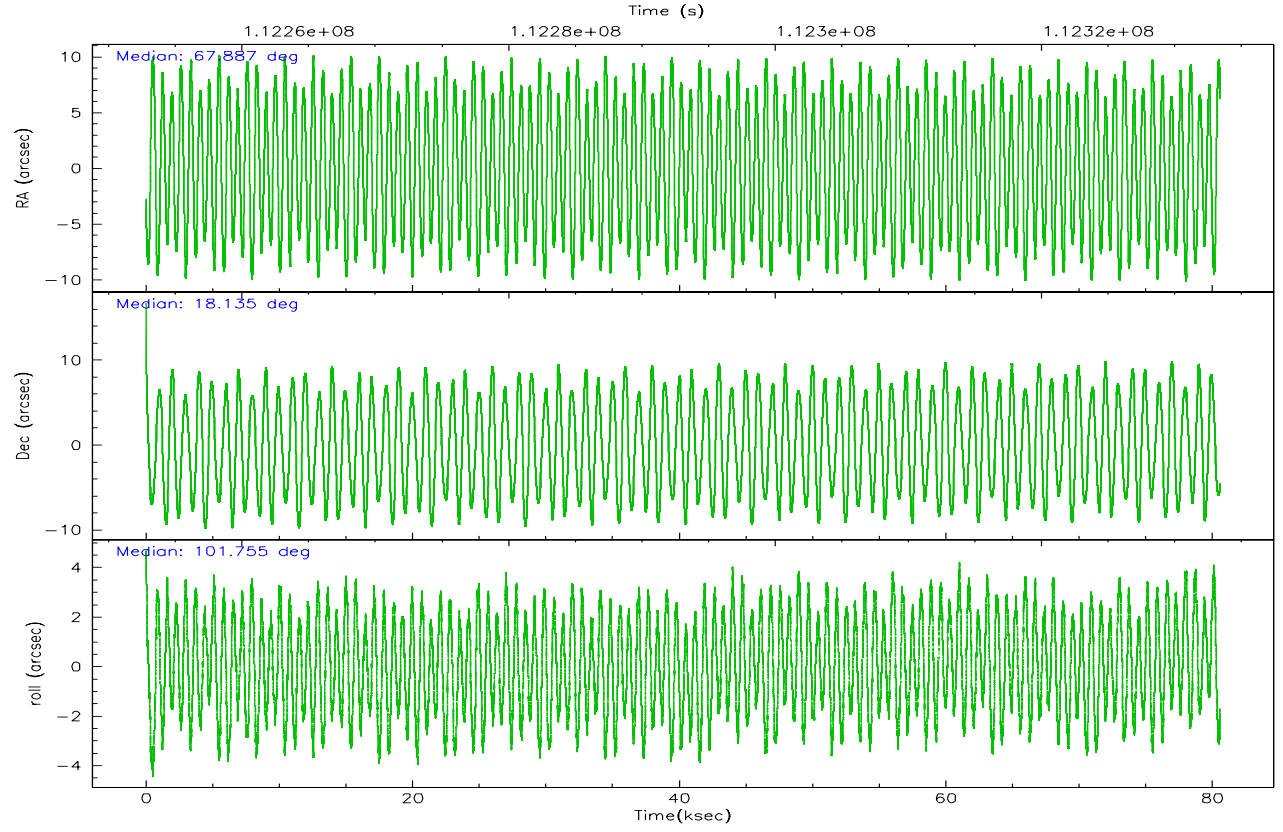


## 2.2 Compared Parameters

Parameter	Planned	Actual	Parameter	Planned	Actual
Instrument	ACIS	ACIS	Obspar format version number	6	6
Detector	ACIS-012367	ACIS-012367	Obspar file type	PREDICTED	ACTUAL
Grating	NONE	NONE	Obspar update status	NONE	UPDATED
Data mode	FAINT	FAINT	Number of optional ACIS chips dropped	0	0
Observation mode	POINTING	POINTING	On-chip summing requested	N	N
Pointing RA	67.905641	67.88639232773996	Subarray requested	NONE	NONE
Pointing Dec	18.114481	18.13491993608274	Alternating exposures requested	N	N
Pointing Roll	101.550862	101.7655346505927	Primary exposure time	0.000000	3.2
SIM focus pos (mm)	-0.782348	-0.7809083437167272			
SIM defocus (mm)	0	0.001439871863259334			
SIM translation stage pos (mm)	-233.592463	-233.5874344608287			
SIM translation stage offset (mm)	0	-0.005018542100998502			
Observation start time	112253389.184000	112252211.16924			
Observation start date	2001-07-23T05:28:45	2001-07-23T05:10:11			
Observation end time	112333389.184000	112333932.37244			
Observation end date	2001-07-24T03:42:05	2001-07-24T03:52:12			
Read mode	TIMED	TIMED			

## 2.3 Aspect



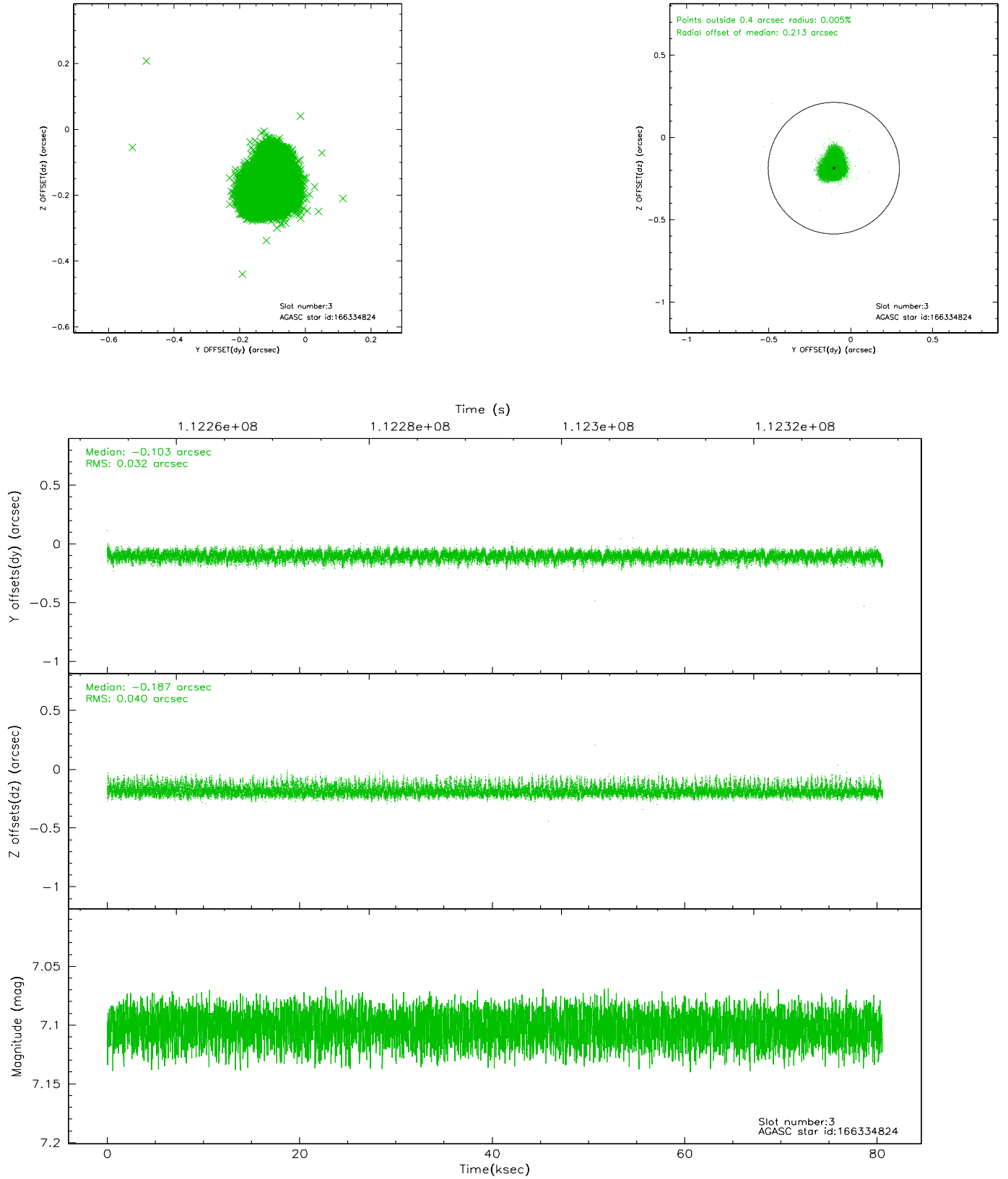


### Slot Statistics

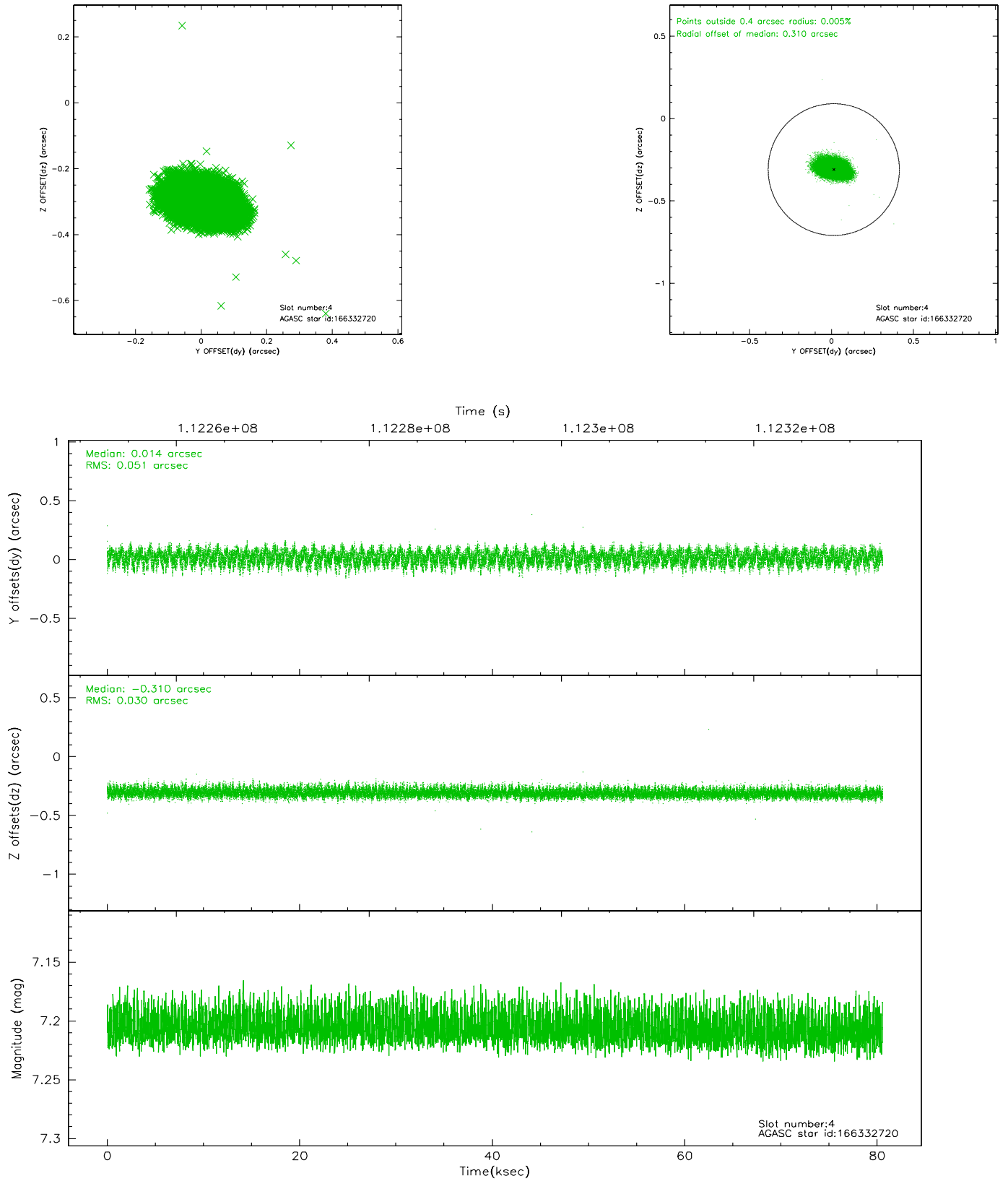
slot	status	id	mag	n_pts	med_dy	med_dz	dr1	dr2	ra	dec	mean_y	mean_z
0	FID	ACIS-I-2	7.15	19654	-0.028	-0.046	0.010	0.016	0.000000	0.000000	-755.81	-836.93
1	FID	ACIS-I-4	7.18	19653	-0.082	0.037	0.008	0.017	0.000000	0.000000	2158.20	1069.40
2	FID	ACIS-I-5	7.23	19654	0.009	0.077	0.010	0.016	0.000000	0.000000	-1809.72	1067.15
3	GUIDE	166334824	7.10	39307	-0.103	-0.187	0.053	0.093	67.376458	17.863163	-521.11	1957.75
4	GUIDE	166332720	7.21	39310	0.014	-0.310	0.063	0.103	67.335629	17.544937	-1614.43	2327.32
5	GUIDE	166338760	8.05	39304	0.022	-0.067	0.056	0.089	67.450523	17.677603	-1226.60	1844.80
6	GUIDE	166467888	8.11	39307	-0.008	0.329	0.071	0.118	68.675864	17.748180	-1814.92	-2323.49
7	GUIDE	166468240	9.06	39289	0.078	0.233	0.068	0.112	68.167699	17.861525	-1071.00	-696.53

## 2.4 Star Slots

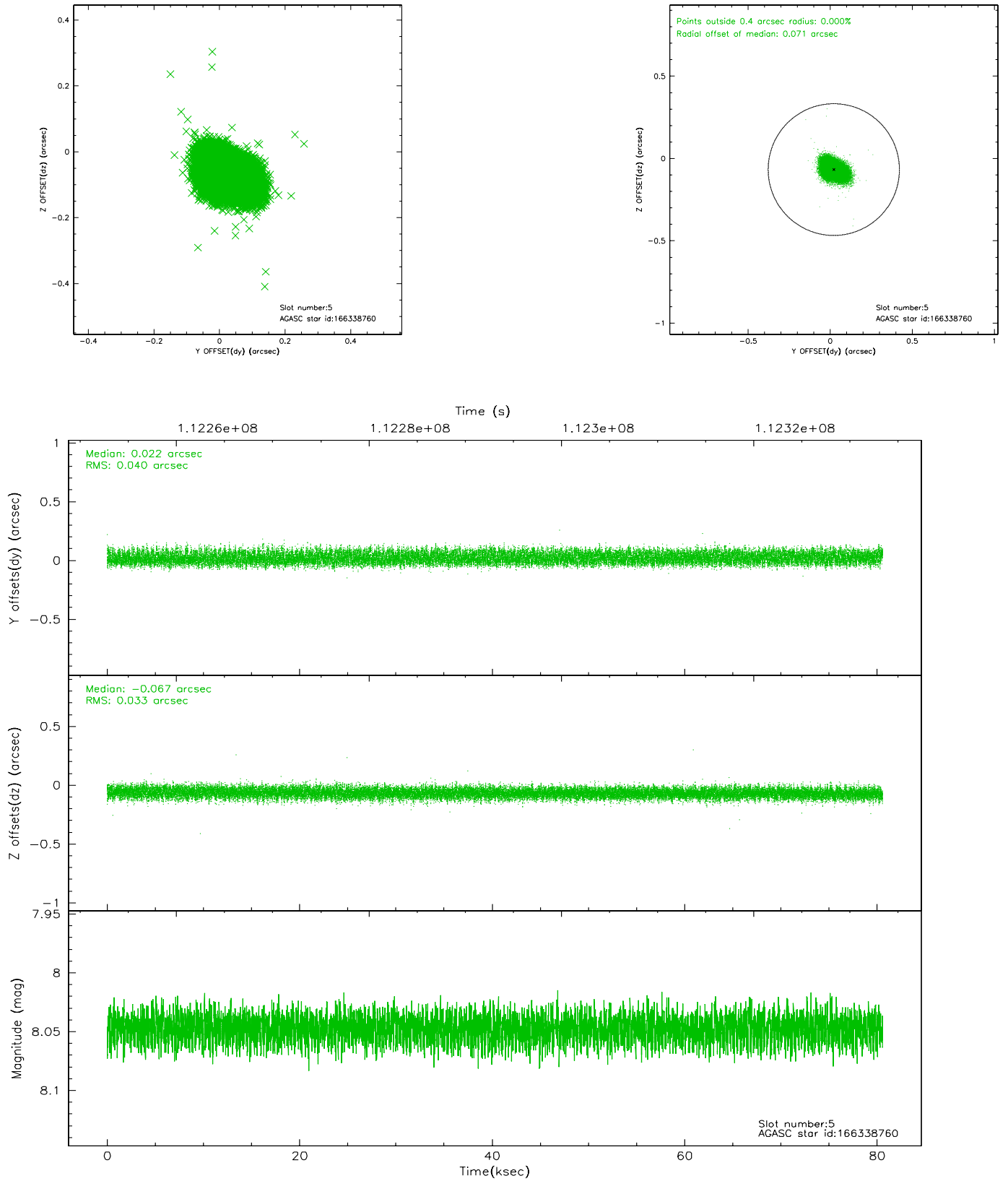
### 2.4.1 Slot 3



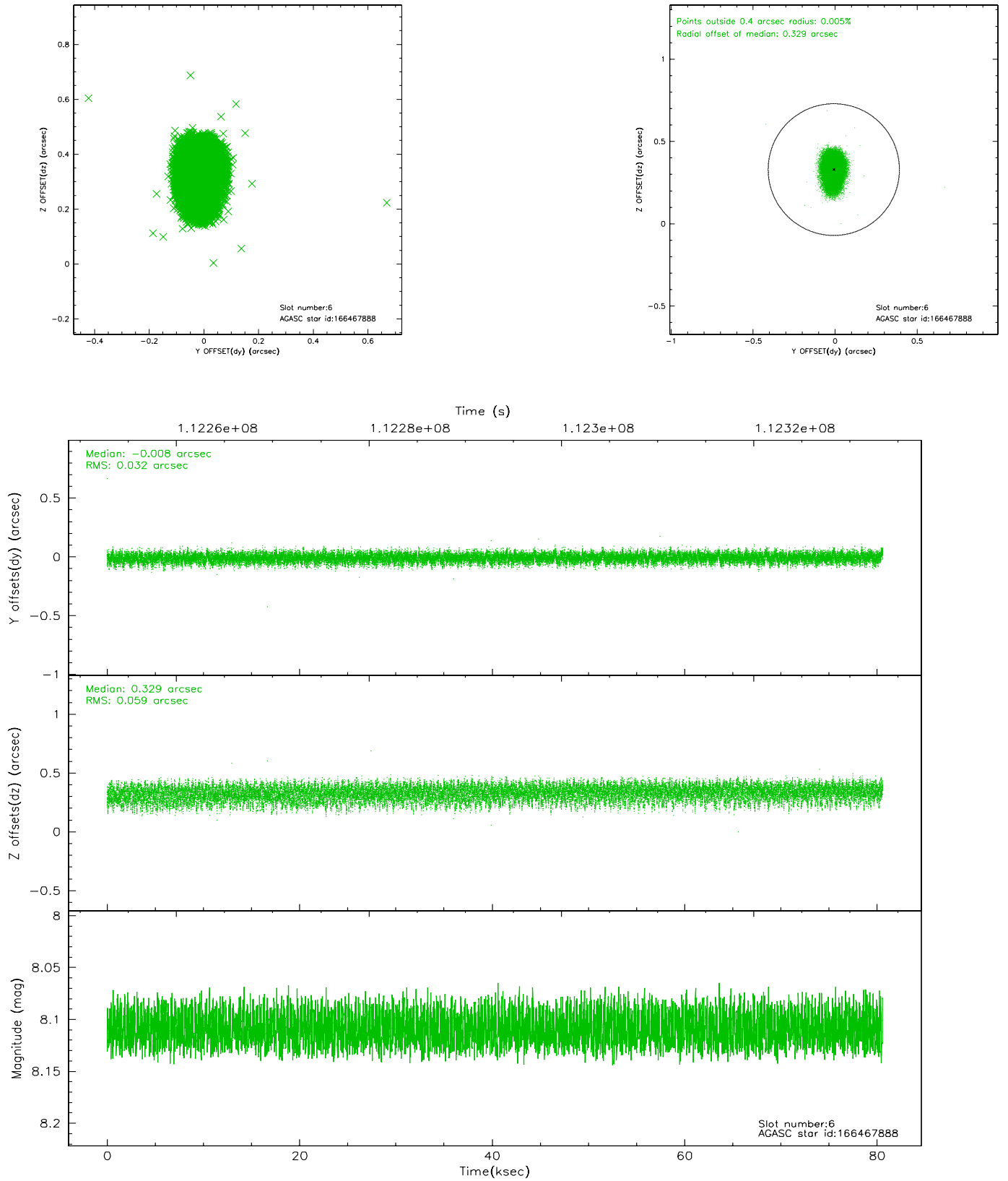
## 2.4.2 Slot 4



### 2.4.3 Slot 5

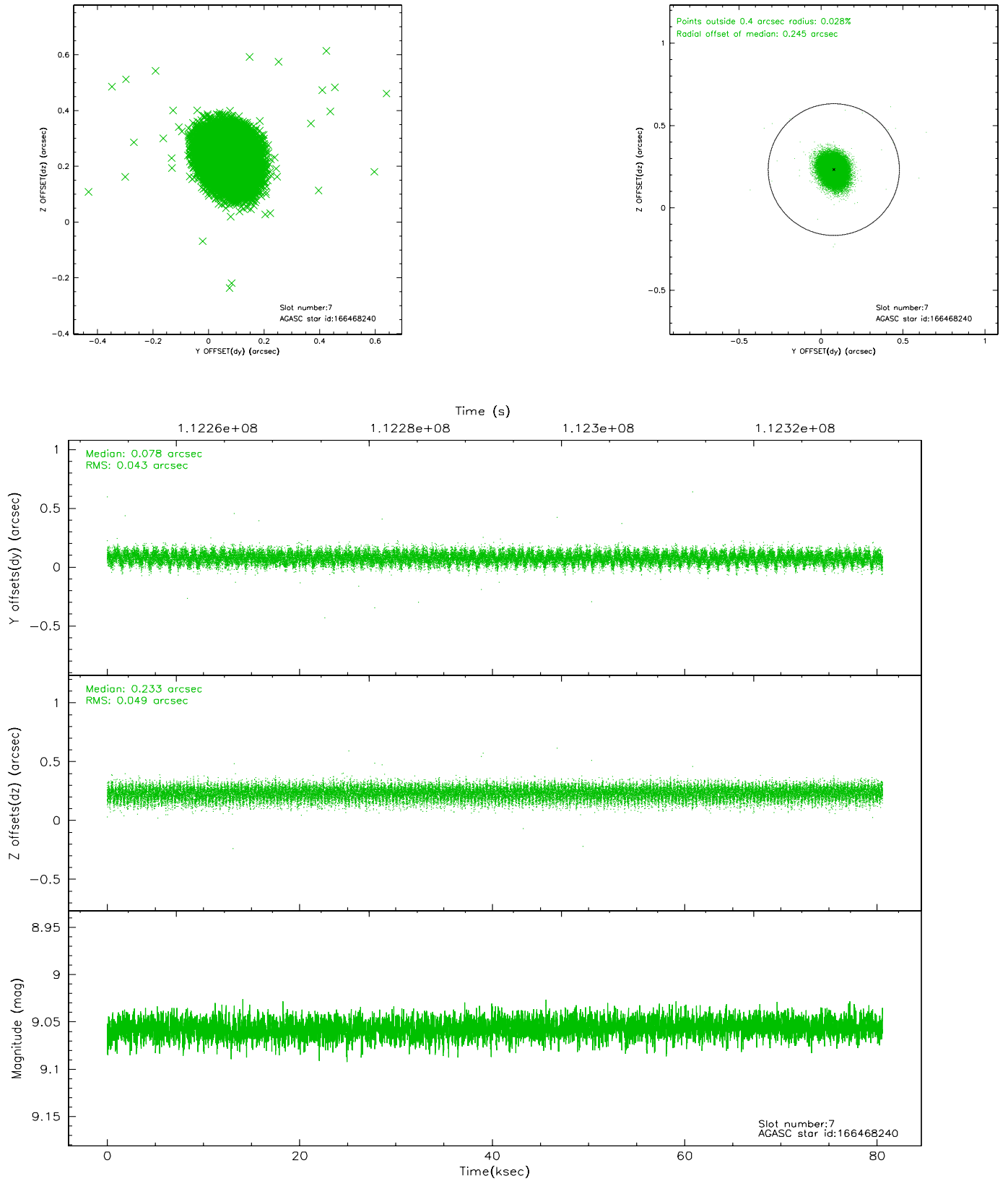


## 2.4.4 Slot 6



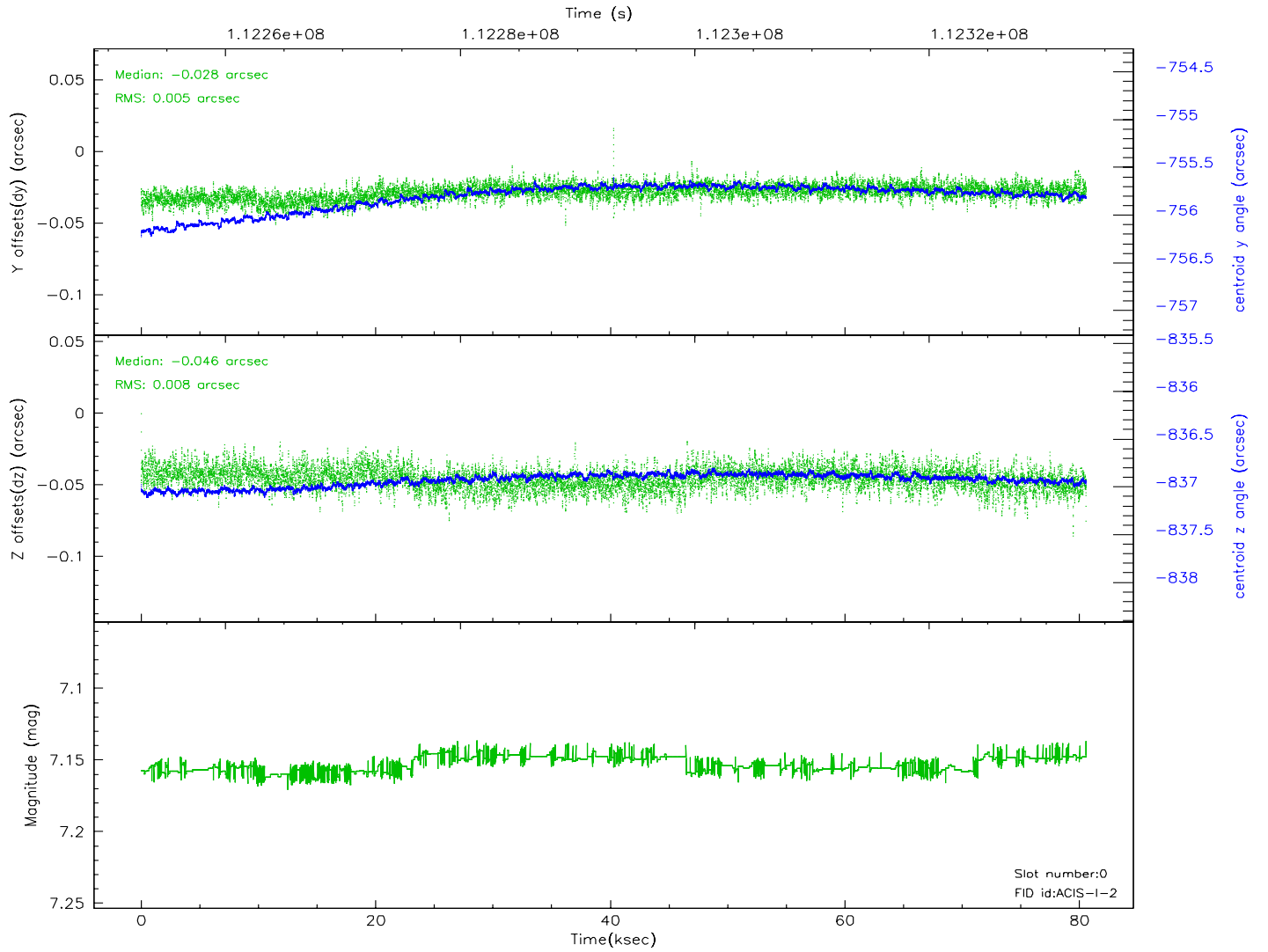
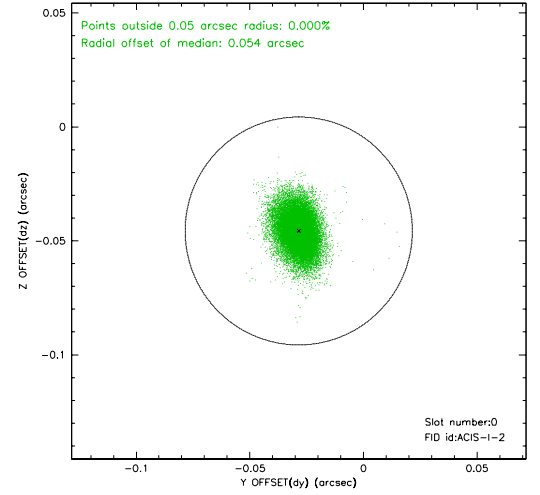
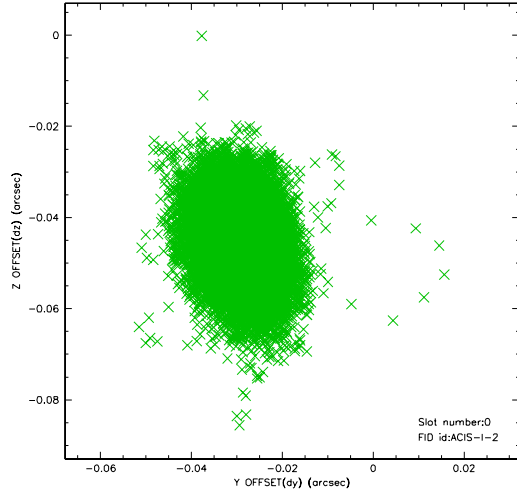


## 2.4.5 Slot 7

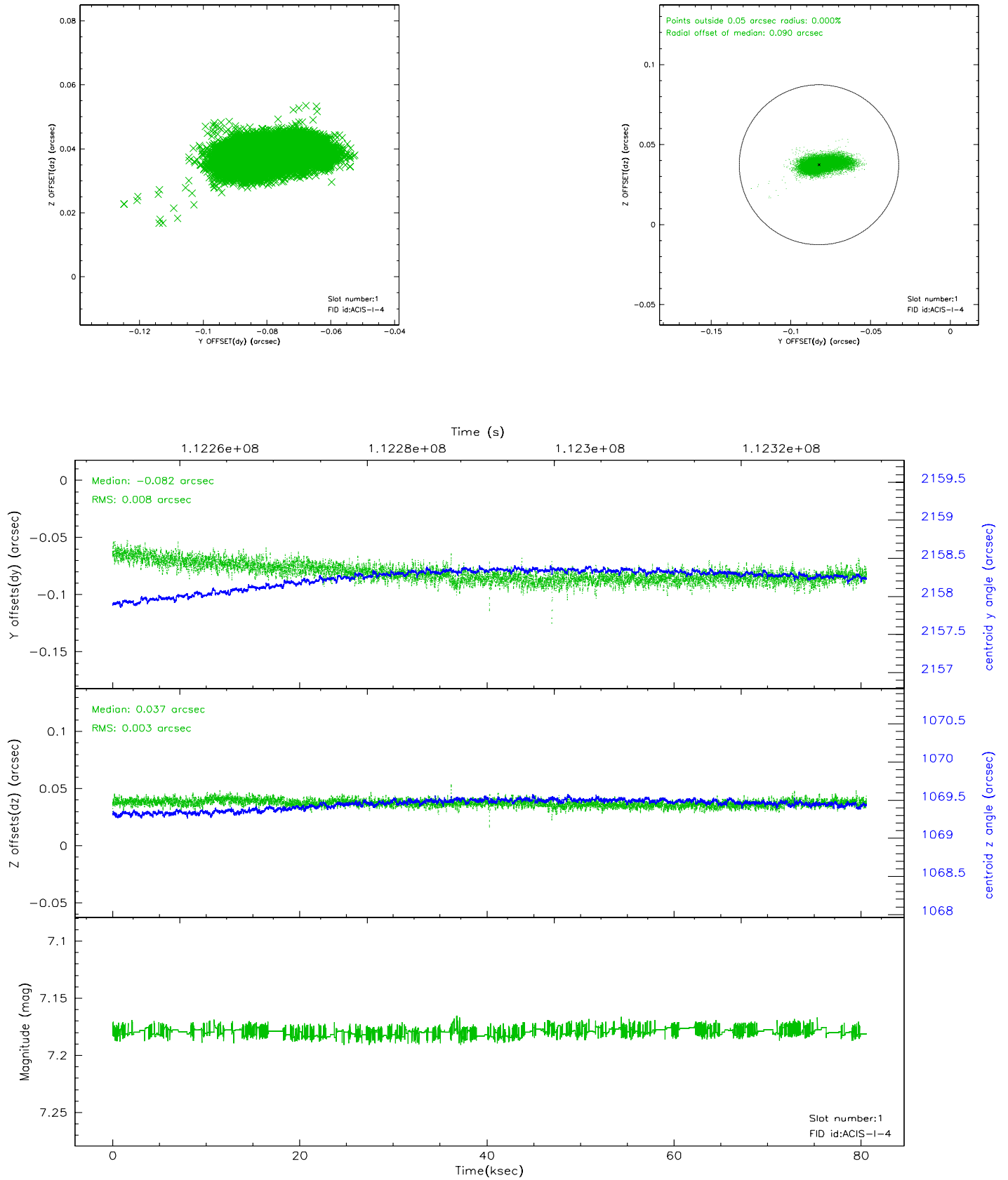


## 2.5 FID Slots

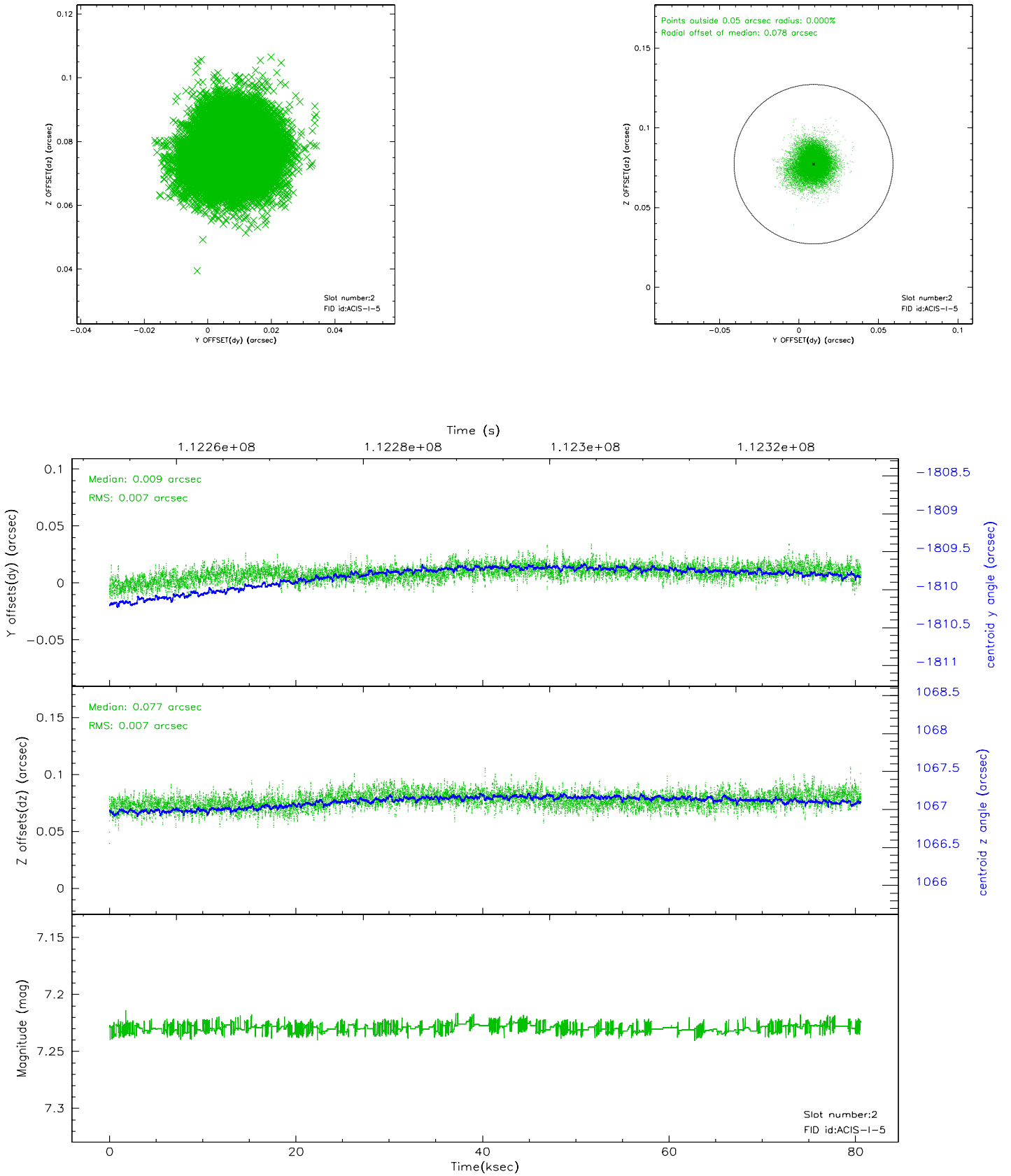
### 2.5.1 Slot 0



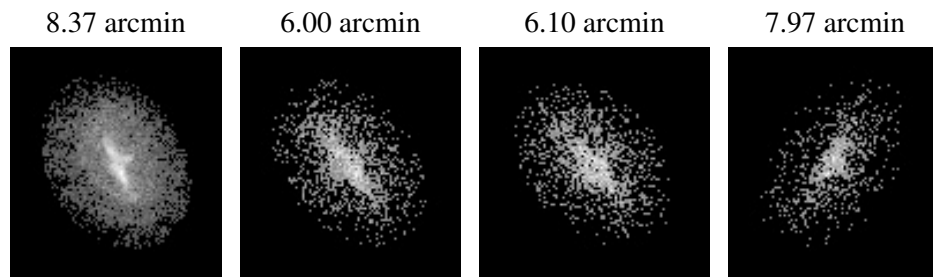
## 2.5.2 Slot 1



### 2.5.3 Slot 2



### 3 Point Sources



## A Summary

### A.1 Status

V&V Scientist	Beth Sundheim
V&V Date (YYYY-MM-DD)	2006.12.17
V&V Edition	1
V&V Disposition and Status	OK
V&V Charge Time	79.939

### A.2 Comments