

V&V Reference Report

L2 ASCDS Version : 7.6.10

Observation 1846 - L2 Version 001
Chandra X-Ray Center

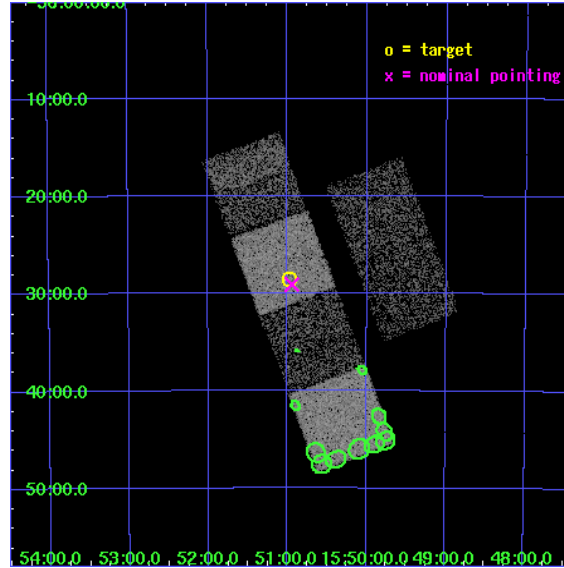
L2 Processing Date : Jun 6 2007

Contents

1	Front	2
2	OBI	3
2.1	OBI	3
2.1.1	Images	3
2.1.2	Bias	3
2.1.3	Parameters	4
2.1.4	Events	4
2.2	Compared Parameters	5
2.3	Aspect	6
2.4	Star Slots	9
2.4.1	Slot 3	9
2.4.2	Slot 4	10
2.4.3	Slot 5	11
2.4.4	Slot 6	12
2.4.5	Slot 7	13
2.5	FID Slots	14
2.5.1	Slot 0	14
2.5.2	Slot 1	15
2.5.3	Slot 2	16
3	Point Sources	17
A	Summary	18
A.1	Status	18
A.2	Comments	18

1 Front

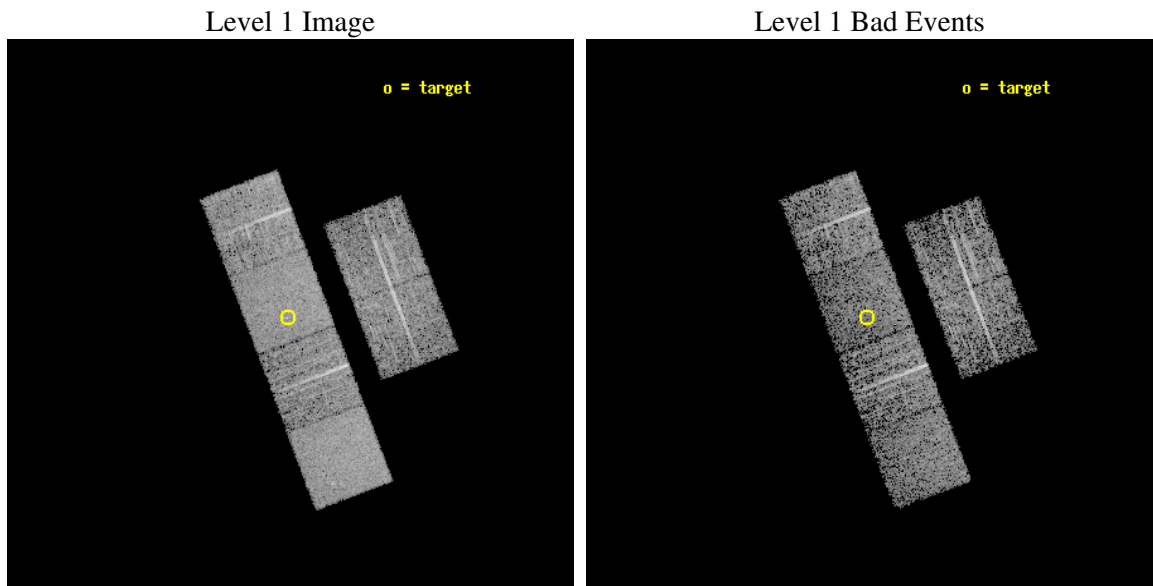
seq_num	400112
obs_id	1846
title	OBSERVATIONS OF A BLACK HOLE CANDIDATE X-RAY TRANSIENT DURING OUTBURST DECAY
observer	Dr. John Tomsick
object	XTE J1550-564
dtcycle	0
cycle	P
ra_targ	237.745
dec_targ	-56.476389
ra_nom	237.73586112976
dec_nom	-56.484863623832
roll_nom	249.28621133596
revision	3
ontime	4627.2000043094
livetime	4568.6076116895
ontime2	4627.2000043094
ontime3	4627.2000043094
ontime5	4627.2000043094
ontime6	4627.2000043094
ontime7	4627.2000043094
ontime8	4627.2000043094
l2events	43960



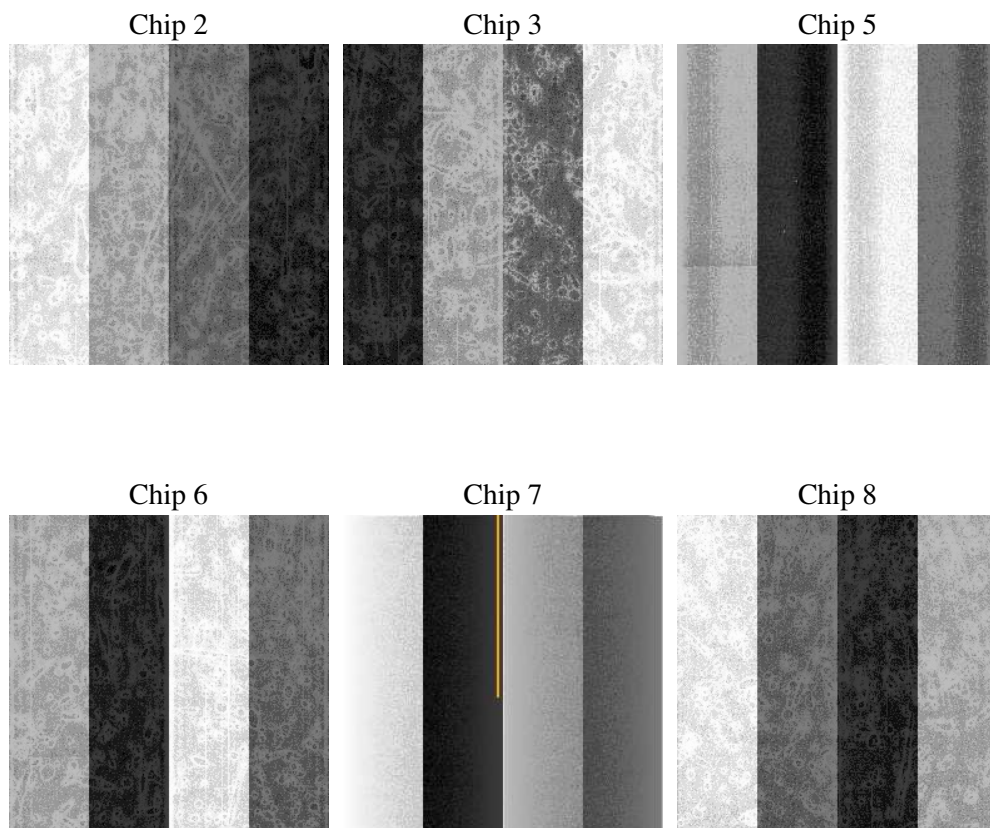
2 OBI

2.1 OBI

2.1.1 Images



2.1.2 Bias



2.1.3 Parameters

obi_num	0
ascdsver	7.6.10
caldbver	3.4.0
date	2007-06-06T23:22:42
revision	3

sched_exp_time	4675.000000
ontime	4627.2000043094
ontime2	4627.2000043094
ontime3	4627.2000043094
ontime5	4627.2000043094
ontime6	4627.2000043094
ontime7	4627.2000043094
ontime8	4627.2000043094
l1events	186924

2.1.4 Events

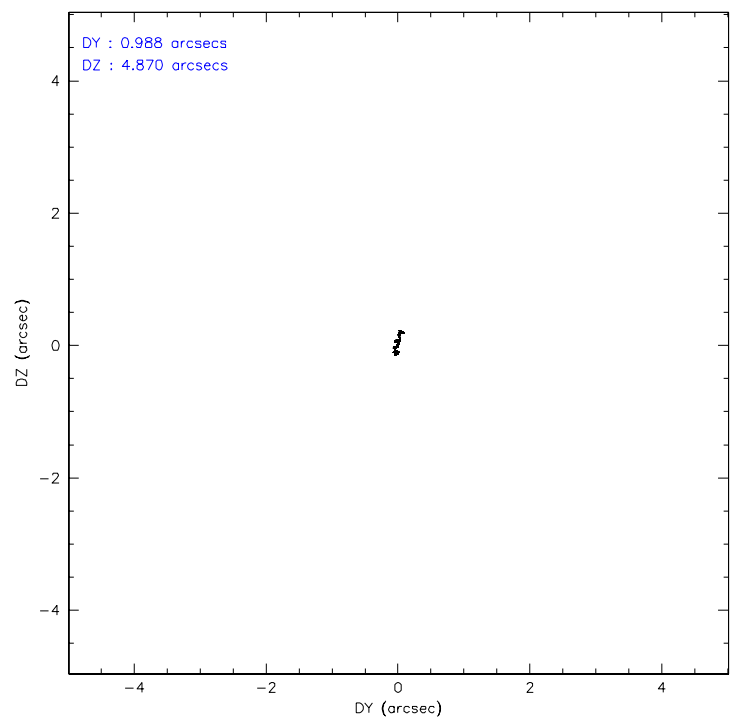
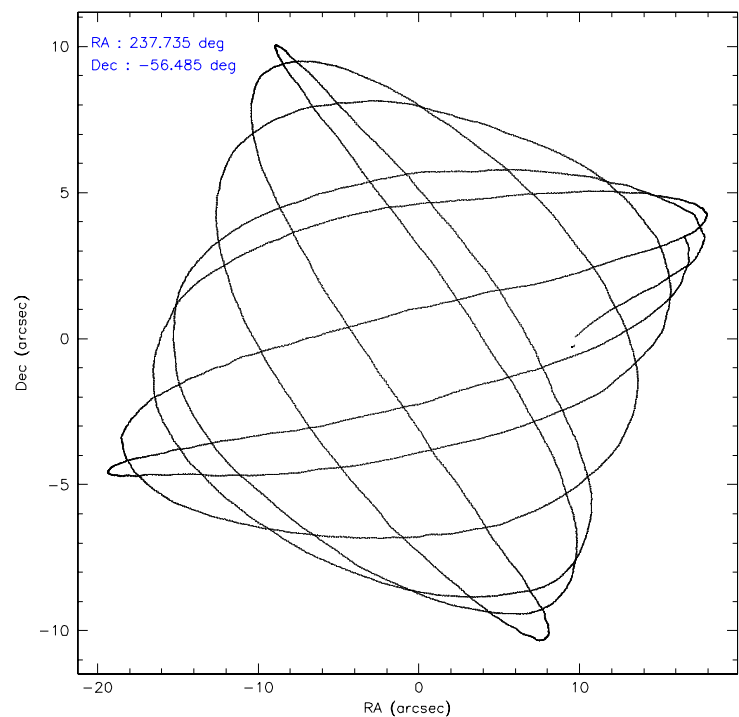
	ccd 2	ccd 3	ccd 5	ccd 6	ccd 7	ccd 8
level 1 events	26210	27266	36919	28256	34259	34014
rejected events	23190	23999	20072	24825	19388	26031
rejected %	88%	88%	54%	87%	56%	76%

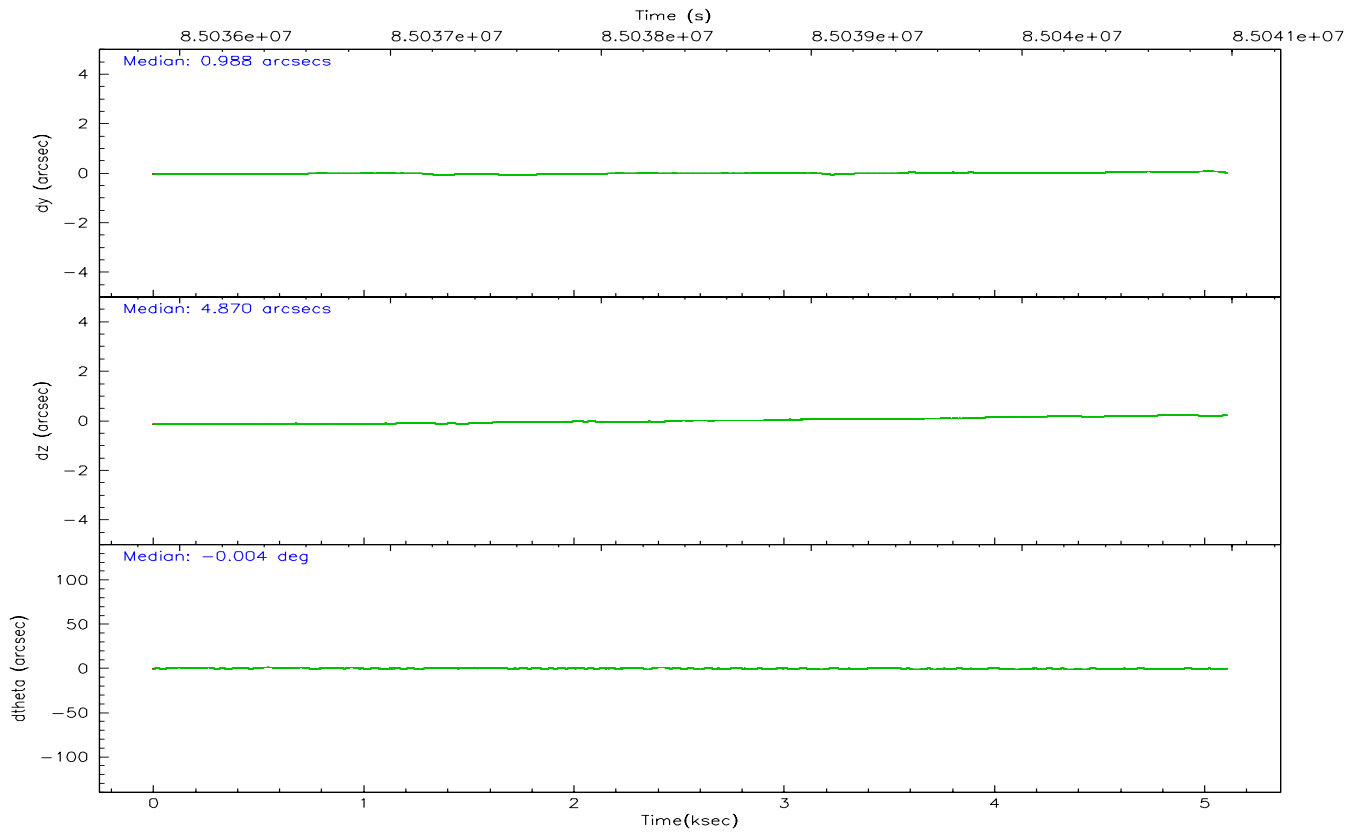
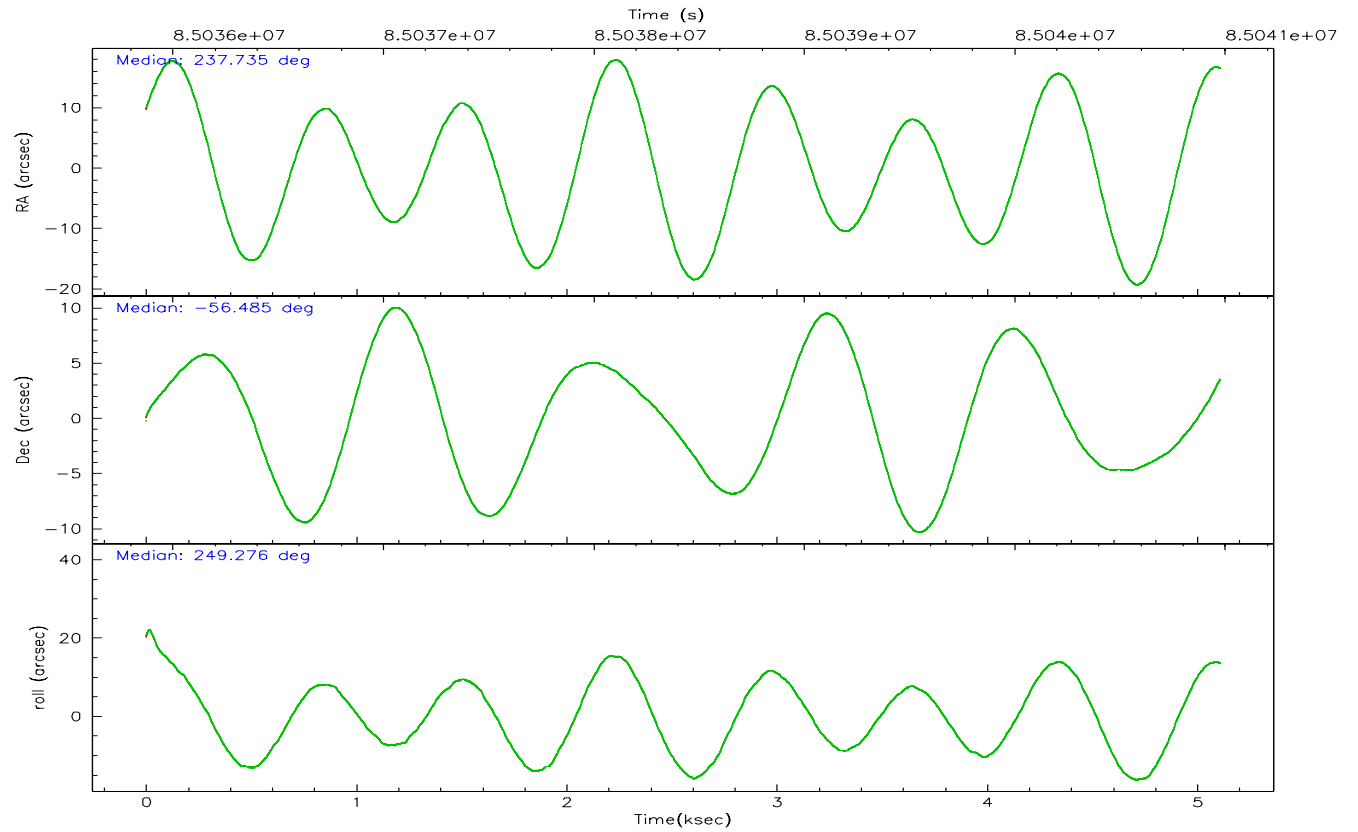
	ccd 2	ccd 3	ccd 5	ccd 6	ccd 7	ccd 8
grade 0 events	1396	1554	1434	1556	1563	3493
	5%	5%	3%	5%	4%	10%
grade 1 events	18	9	39	15	30	21
	0%	0%	0%	0%	0%	0%
grade 2 events	606	651	4817	634	2976	1463
	2%	2%	13%	2%	8%	4%
grade 3 events	272	285	780	342	1334	732
	1%	1%	2%	1%	3%	2%
grade 4 events	265	264	784	290	1380	673
	1%	0%	2%	1%	4%	1%
grade 5 events	899	961	2797	1095	3267	1399
	3%	3%	7%	3%	9%	4%
grade 6 events	483	523	9051	616	7637	1626
	1%	1%	24%	2%	22%	4%
grade 7 events	22271	23019	17217	23708	16072	24607
	84%	84%	46%	83%	46%	72%

2.2 Compared Parameters

Parameter	Planned	Actual	Parameter	Planned	Actual
Instrument	ACIS	ACIS	Obspar format version number	6	6
Detector	ACIS-235678	ACIS-235678	Obspar file type	PREDICTED	ACTUAL
Grating	NONE	NONE	Obspar update status	NONE	UPDATED
Data mode	FAINT	FAINT	Number of optional ACIS chips dropped	0	0
Observation mode	POINTING	POINTING	On-chip summing requested	N	N
Pointing RA	237.727425	237.7358611297643	Subarray requested	NONE	NONE
Pointing Dec	-56.457885	-56.48486362383245	Alternating exposures requested	N	N
Pointing Roll	249.122530	249.2862113359631	Primary exposure time	0.000000	3.2
SIM focus pos (mm)	-0.684267	-0.6828225247311905			
SIM defocus (mm)	0	0.001444936568705701			
SIM translation stage pos (mm)	-190.132523	-190.1400660498719			
SIM translation stage offset (mm)	0	0.00754346686406393			
Observation start time	85036303.184000	85035224.19720501			
Observation start date	2000-09-11T05:10:39	2000-09-11T04:53:44			
Observation end time	85040978.184000	85042265.947469			
Observation end date	2000-09-11T06:28:34	2000-09-11T06:51:05			
Read mode	TIMED	TIMED			

2.3 Aspect



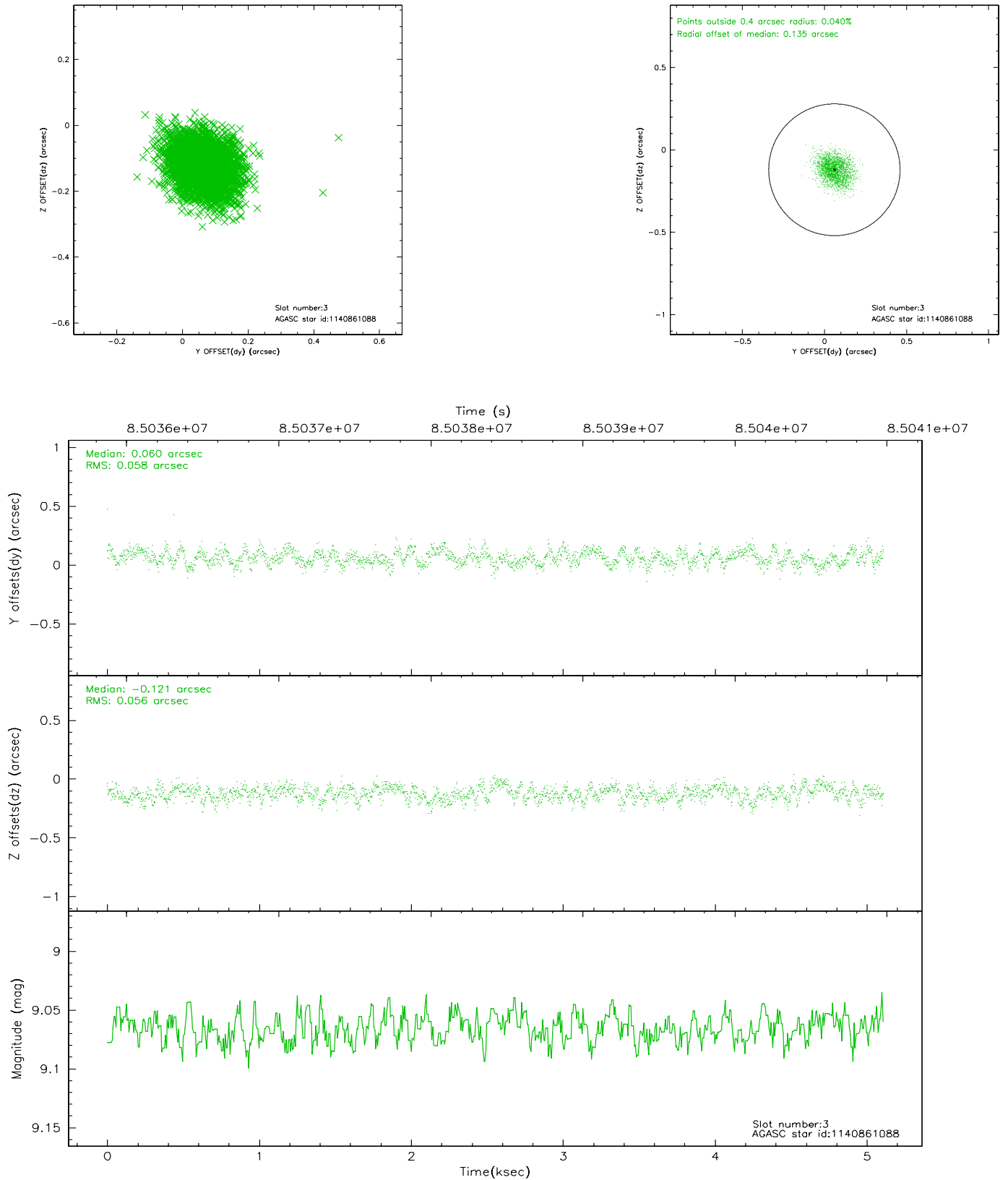


Slot Statistics

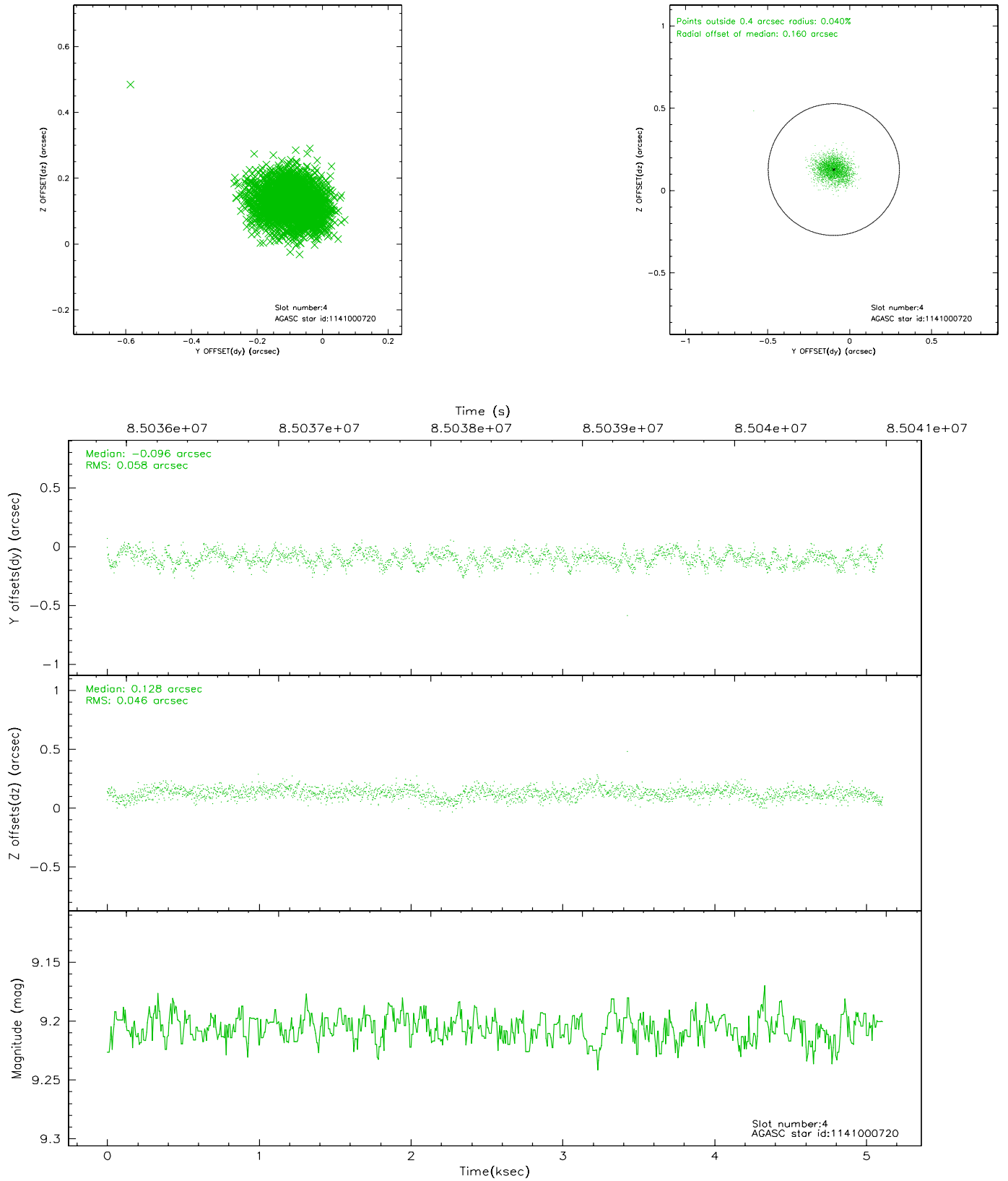
slot	status	id	mag	n_pts	med_dy	med_dz	dr1	dr2	ra	dec	mean_y	mean_z
0	FID	ACIS-S-2	7.11	1247	-0.033	0.004	0.007	0.011	0.000000	0.000000	-753.59	-1726.00
1	FID	ACIS-S-4	7.21	1247	-0.017	0.015	0.005	0.009	0.000000	0.000000	2159.15	181.29
2	FID	ACIS-S-5	7.23	1247	0.020	-0.010	0.007	0.012	0.000000	0.000000	-1804.86	176.27
3	GUIDE	1140861088	9.07	2493	0.060	-0.121	0.086	0.136	236.443591	-56.463656	951.10	-2369.33
4	GUIDE	1141000720	9.21	2493	-0.096	0.128	0.080	0.126	238.678440	-56.280404	-1263.00	1552.04
5	GUIDE	1141008368	9.62	2490	-0.025	-0.016	0.081	0.134	237.932994	-56.629432	430.88	601.68
6	GUIDE	1140984088	9.46	2492	0.061	-0.001	0.079	0.129	237.763213	-56.698871	784.56	376.00
7	GUIDE	1140998992	9.51	2492	-0.001	0.011	0.087	0.141	238.012836	-56.351628	-559.95	396.46

2.4 Star Slots

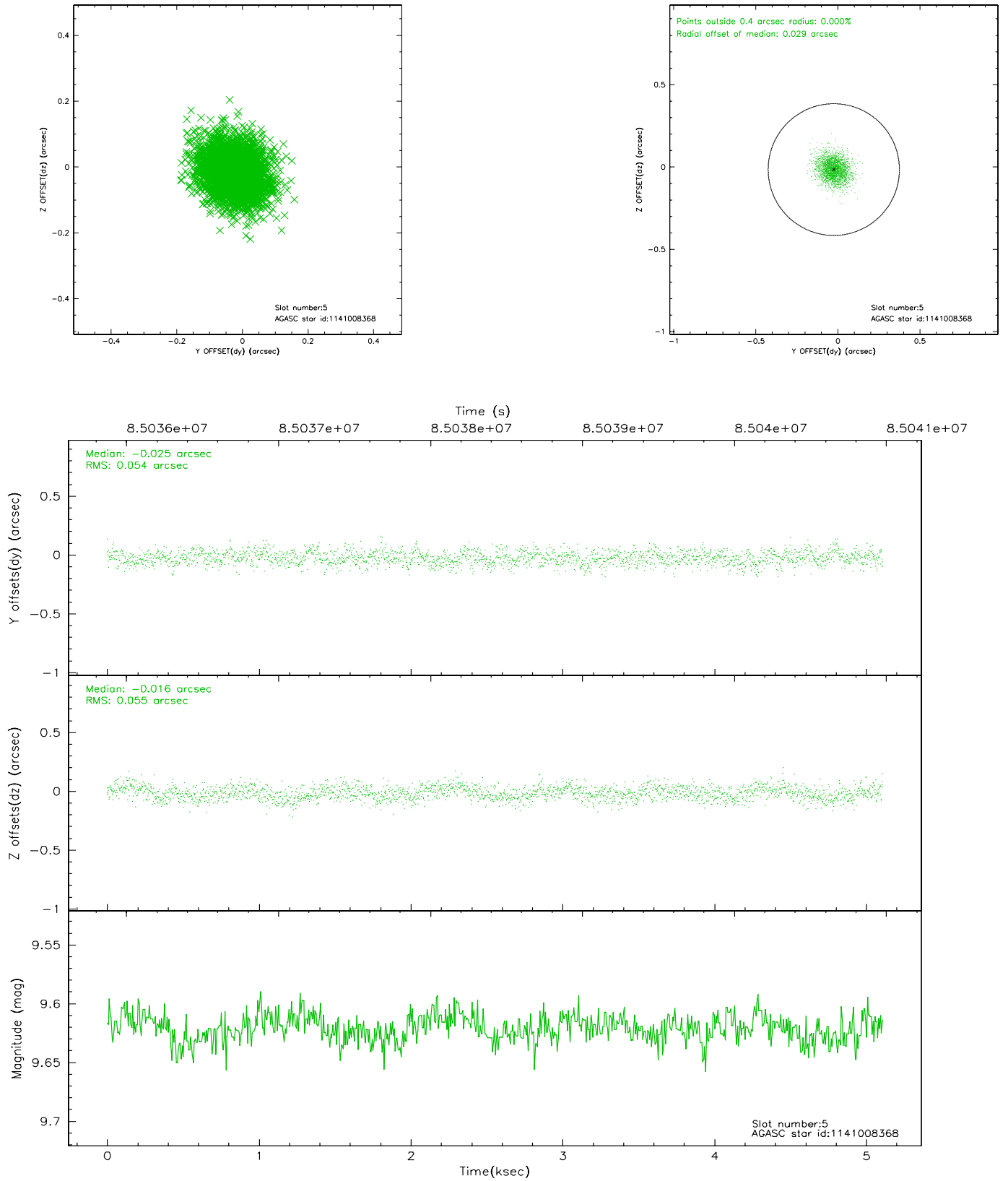
2.4.1 Slot 3



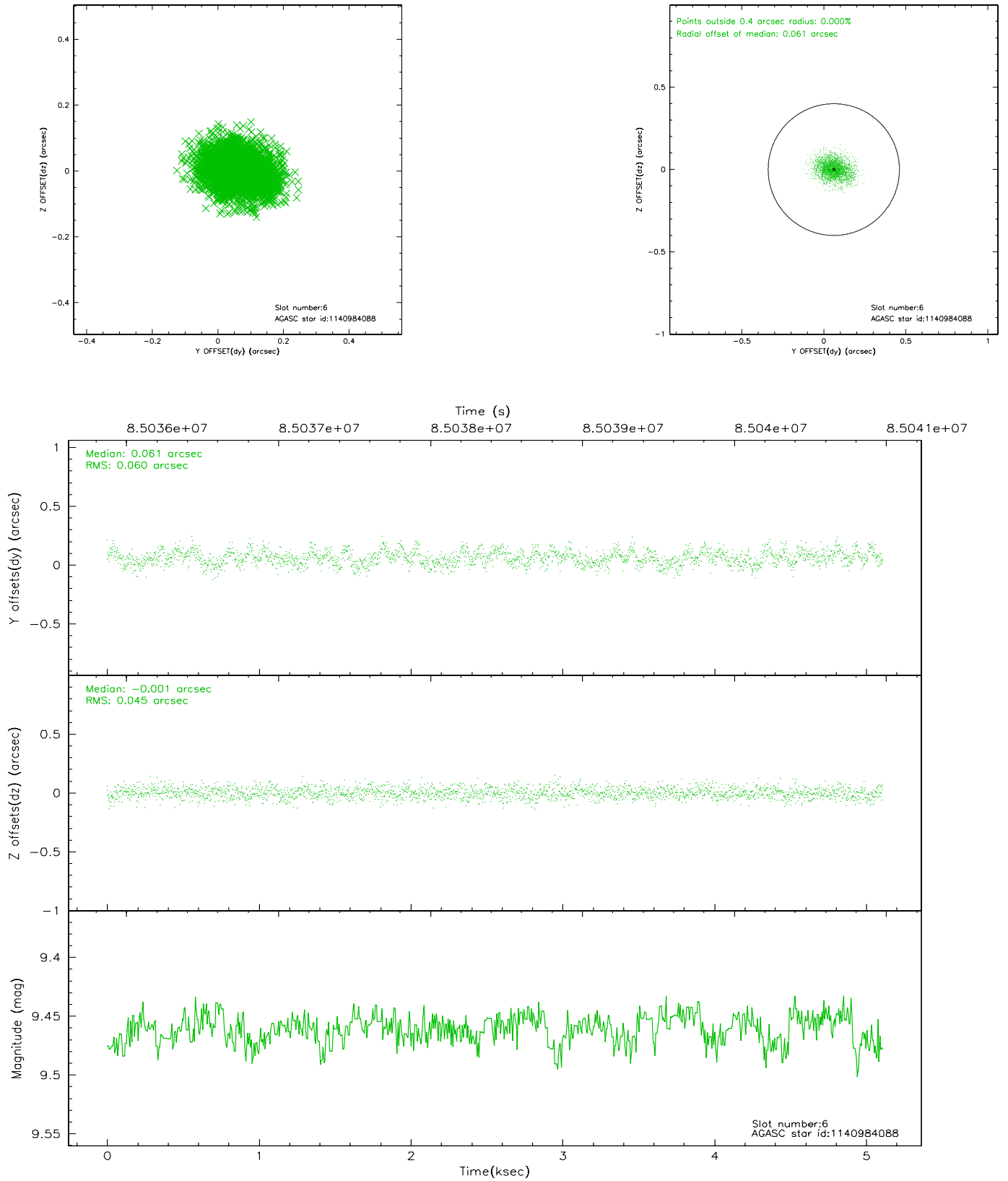
2.4.2 Slot 4



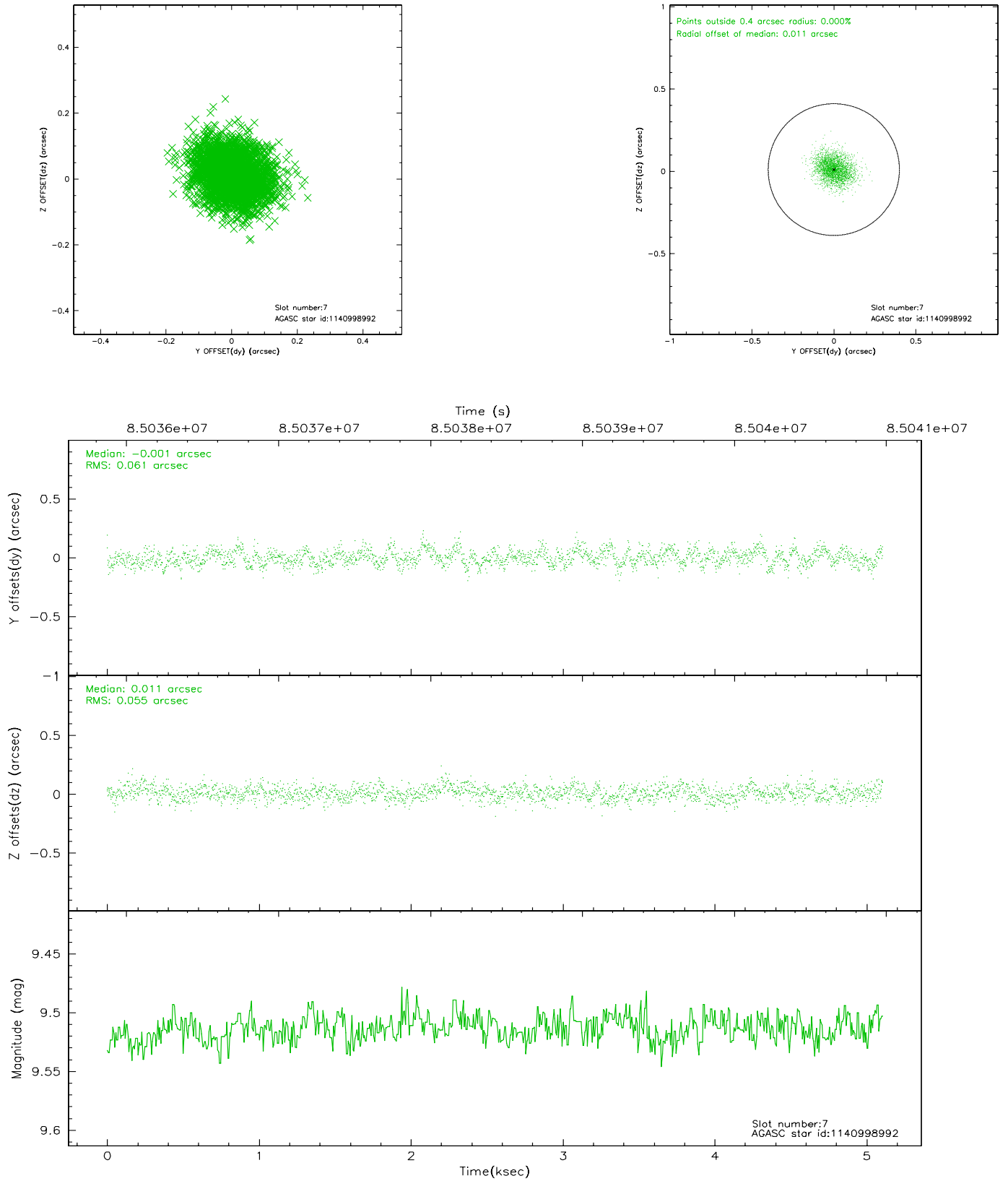
2.4.3 Slot 5



2.4.4 Slot 6

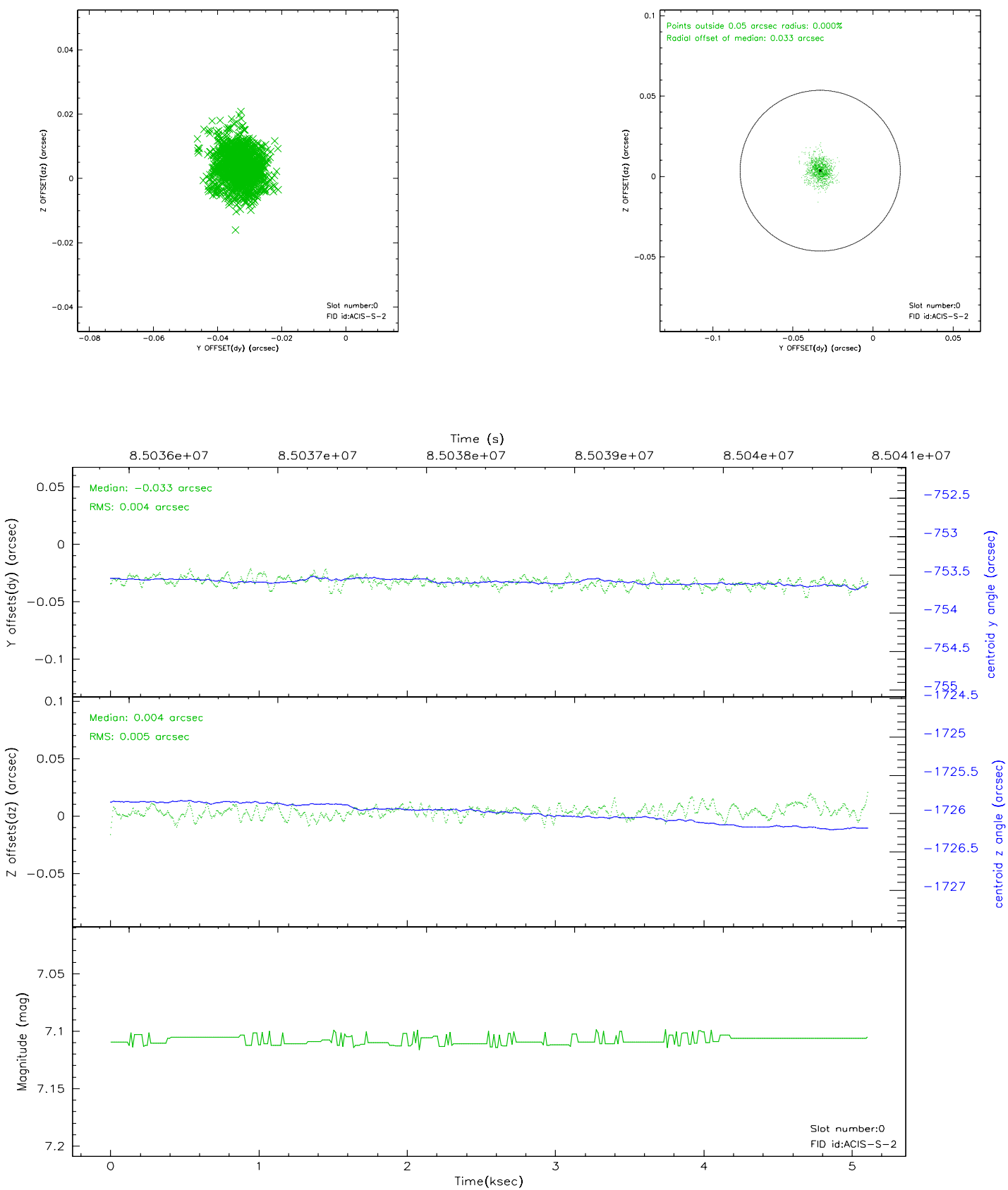


2.4.5 Slot 7

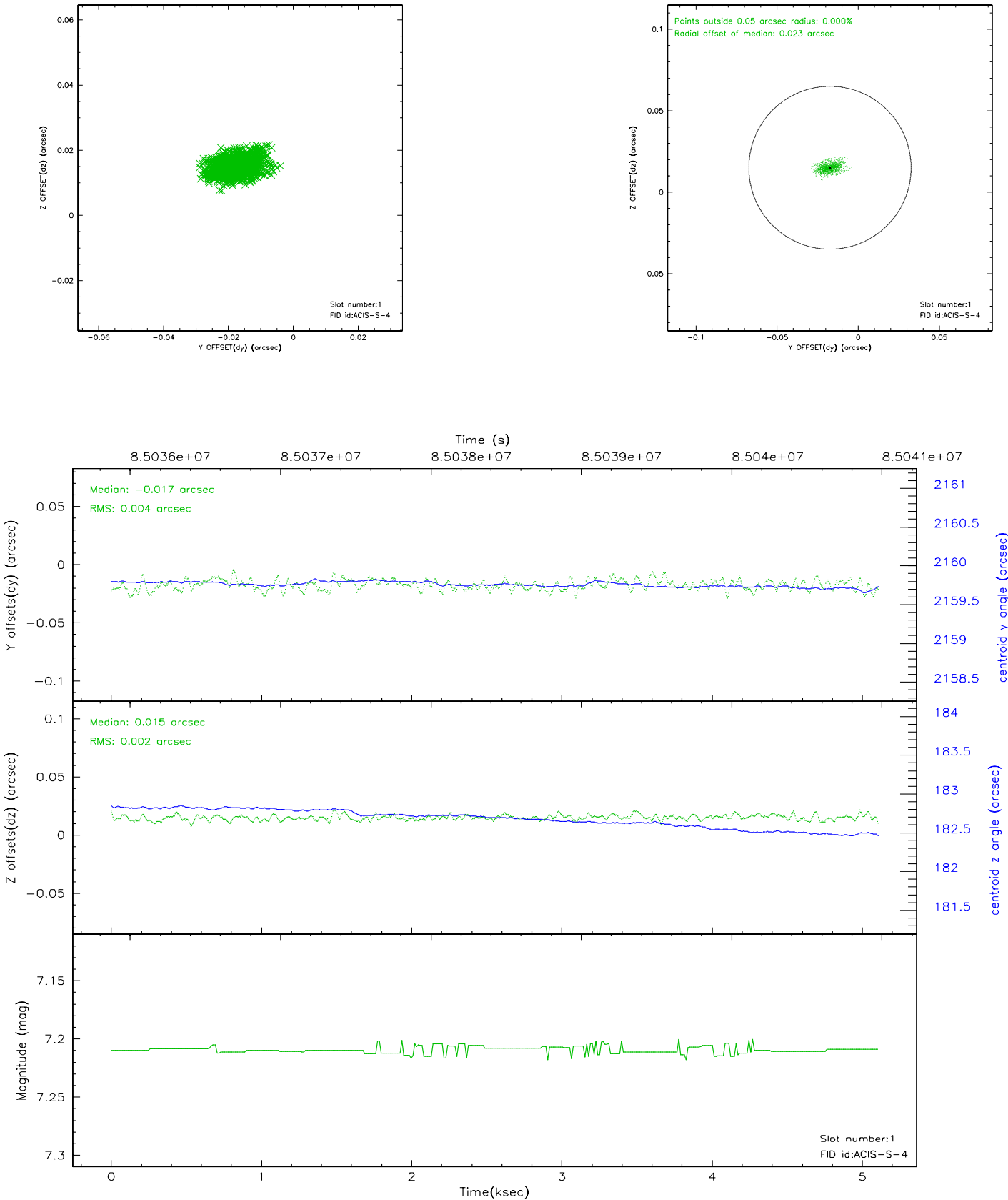


2.5 FID Slots

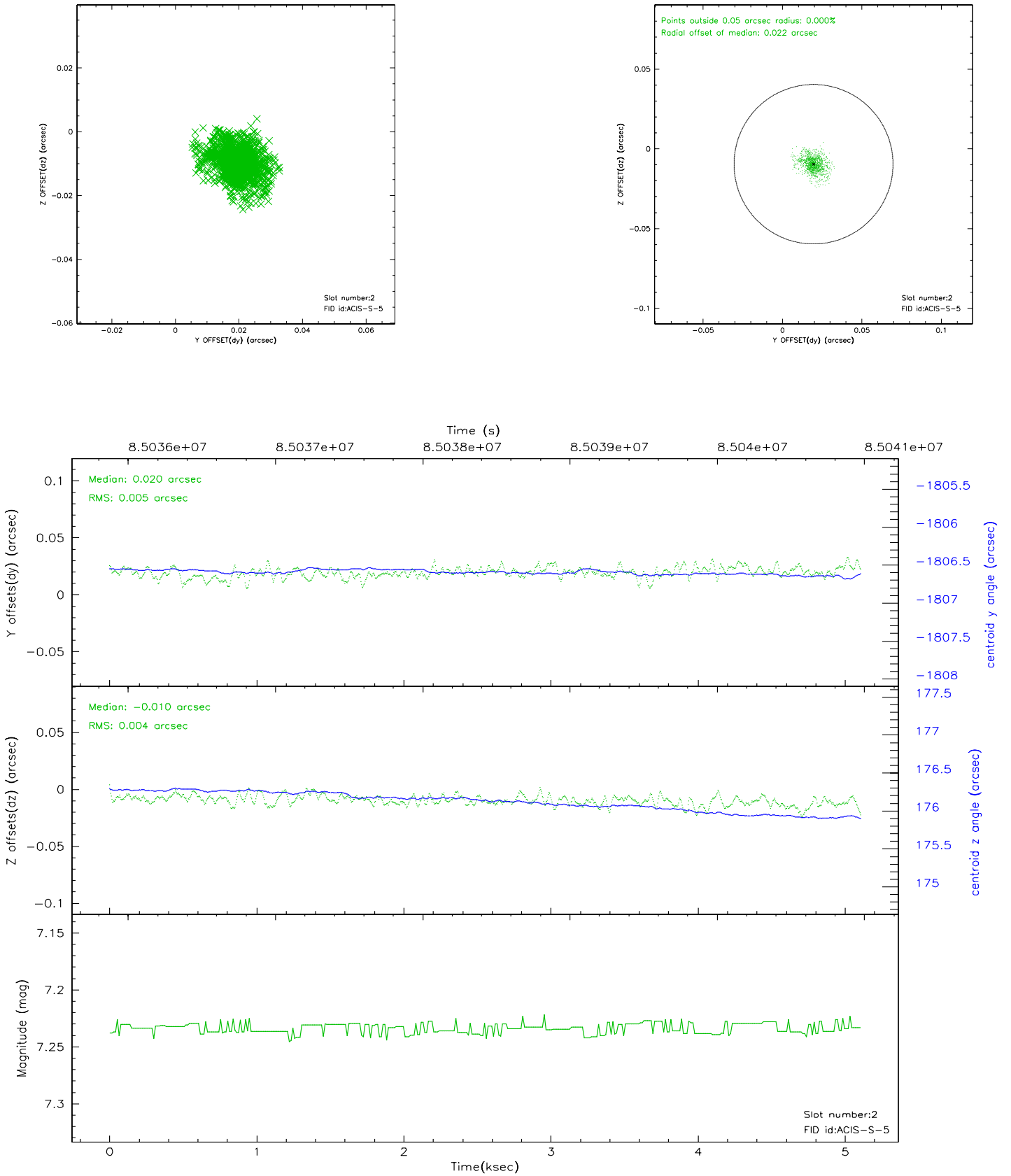
2.5.1 Slot 0



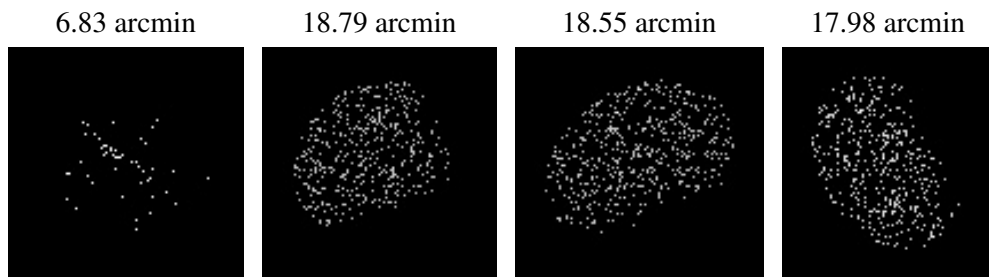
2.5.2 Slot 1



2.5.3 Slot 2



3 Point Sources



A Summary

A.1 Status

V&V Scientist	Beth Sundheim
V&V Date (YYYY-MM-DD)	2007.06.07
V&V Edition	1
V&V Disposition and Status	OK
V&V Charge Time	4.63

A.2 Comments

Focal plane temperature is warmer than -118.7 C degrees during the first ~1 ksec of this observation. The ACIS spectral response calibration for the front-illuminated chips is less accurate at these warmer temperatures than it is at -119.7 C. The back-illuminated chips are not affected at the focal plane temperatures recorded for this observation. Users whose science objectives depend on the most accurate spectral response (i.e.: fitting line-rich spectra) may notice an effect. Users whose science objectives do not depend on the most accurate spectral response should not notice an effect.