

V&V Reference Report

L2 ASCDS Version : 10.3.3

Observation 17206 - L2 Version 1
Chandra X-Ray Center

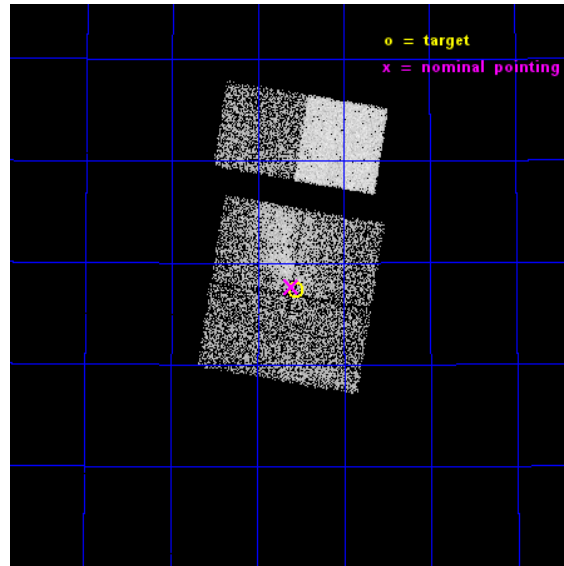
L2 Processing Date : Mar 8 2015

Contents

1	Front	2
2	OBI	3
2.1	OBI	3
2.1.1	Images	3
2.1.2	Bias	3
2.1.3	Parameters	4
2.1.4	Events	4
2.2	Compared Parameters	5
2.3	Aspect	6
2.4	Star Slots	9
2.4.1	Slot 3	9
2.4.2	Slot 4	10
2.4.3	Slot 5	11
2.4.4	Slot 6	12
2.4.5	Slot 7	13
2.5	FID Slots	14
2.5.1	Slot 0	14
2.5.2	Slot 1	15
2.5.3	Slot 2	16
A	Summary	17
A.1	Status	17
A.2	Comments	17

1 Front

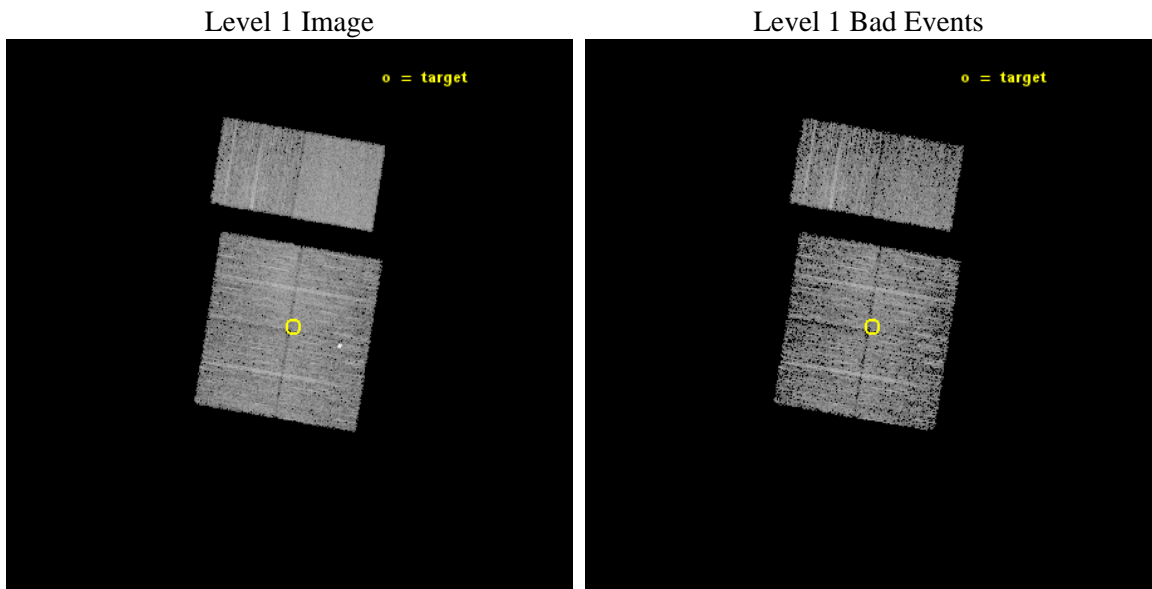
seq_num	801486	Sequence number
obs_id	17206	Observation id
title	Exciting Shock Physics in Faint Galaxy Cluster Outskirts	Proposal
observer	Dr Reinout van Weeren	Principal investigator
object	CIZA J2242.8+4301 SOUTH	Source name
dtcycle	0	
cycle	P	events from which exps? Prim/Second/Both
ra_targ	340.637667	Observer's specified target RA [deg]
dec_targ	52.956333	Observer's specified target Dec [deg]
ra_nom	340.65226260144	Nominal RA [deg]
dec_nom	52.961122427739	Nominal Dec [deg]
roll_nom	9.4360451474752	Nominal Roll [deg]
revision	1	Processing version of data
ontime	6464.0000963211	Sum of GTIs [s]
livetime	6382.1490349479	Livetime [s]
ontime0	6464.0000963211	Sum of GTIs [s]
ontime1	6464.0000963211	Sum of GTIs [s]
ontime2	6464.0000963211	Sum of GTIs [s]
ontime3	6464.0000963211	Sum of GTIs [s]
ontime6	6464.0000963211	Sum of GTIs [s]
ontime7	6464.0000963211	Sum of GTIs [s]
l2events	37197	Number of level 2 events



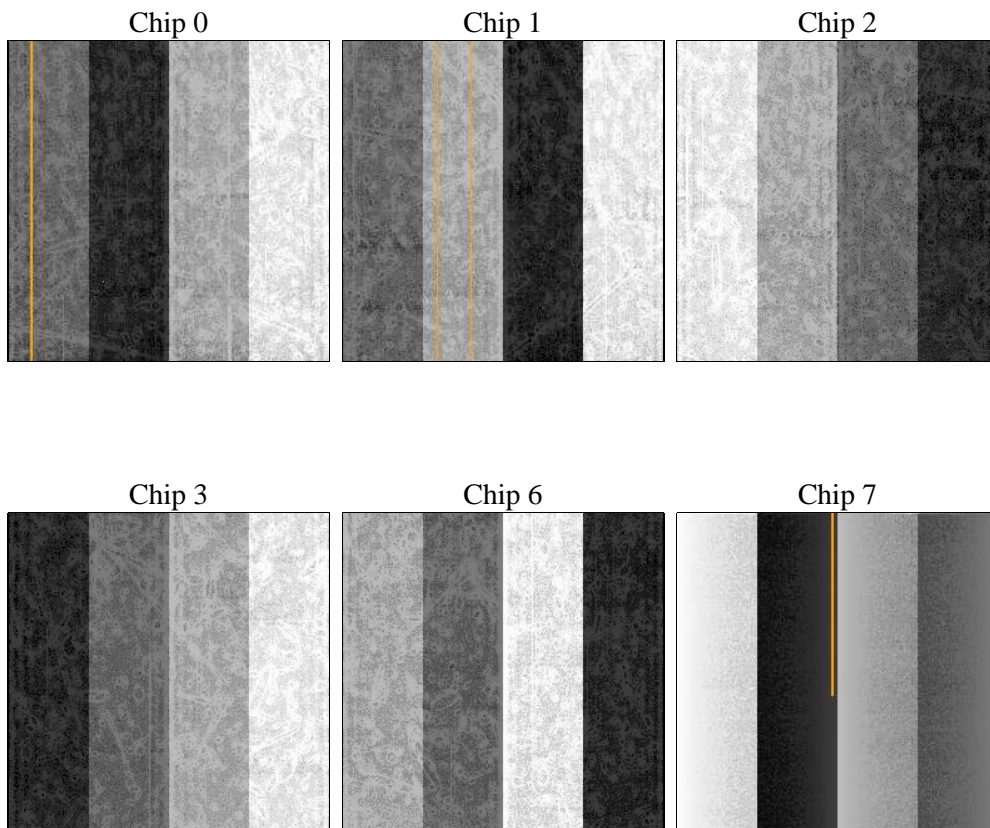
2 OBI

2.1 OBI

2.1.1 Images



2.1.2 Bias



2.1.3 Parameters

obi_num	1	Obi number	sched_exp_time	6500.000000	[s] Scheduled observation exposure time
ascdsver	10.3.3	Processing system revision	ontime	6464.0000963211	Sum of GTIs [s]
caldsver	4.6.7	 	ontime0	6464.0000963211	Sum of GTIs [s]
date	2015-03-08T23:25:00	Date and time of file creation	ontime1	6464.0000963211	Sum of GTIs [s]
revision	1	Processing version of data	ontime2	6464.0000963211	Sum of GTIs [s]
			ontime3	6464.0000963211	Sum of GTIs [s]
			ontime6	6464.0000963211	Sum of GTIs [s]
			ontime7	6464.0000963211	Sum of GTIs [s]
			l1events	199747	Number of level 1 events

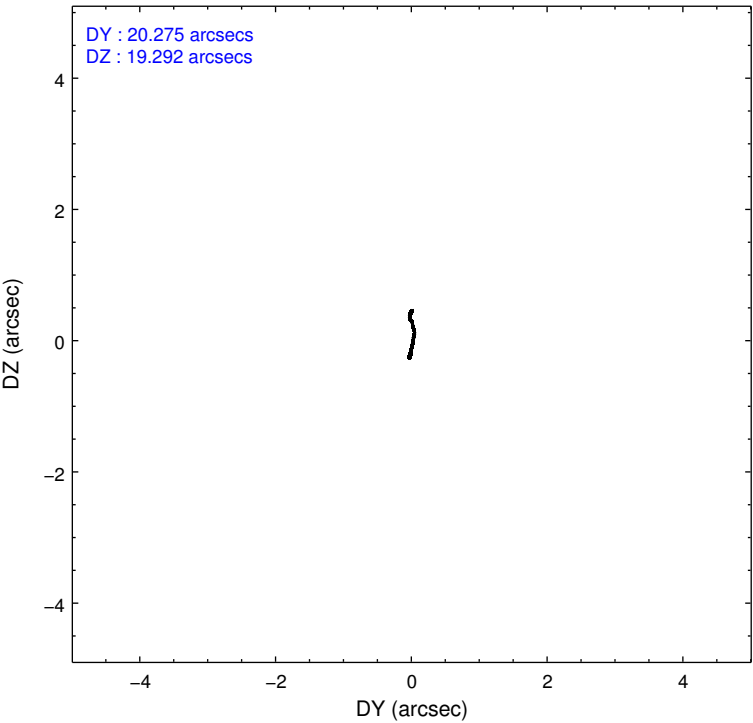
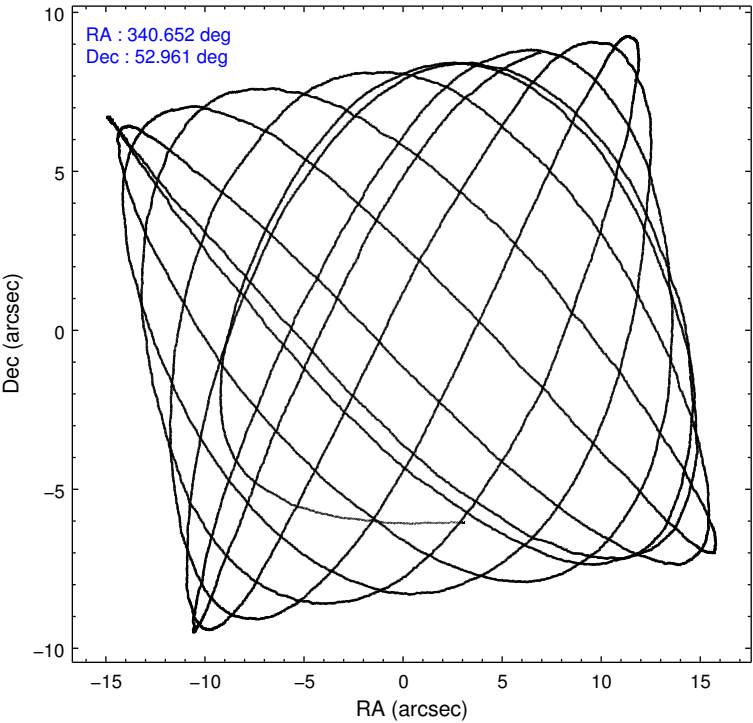
2.1.4 Events

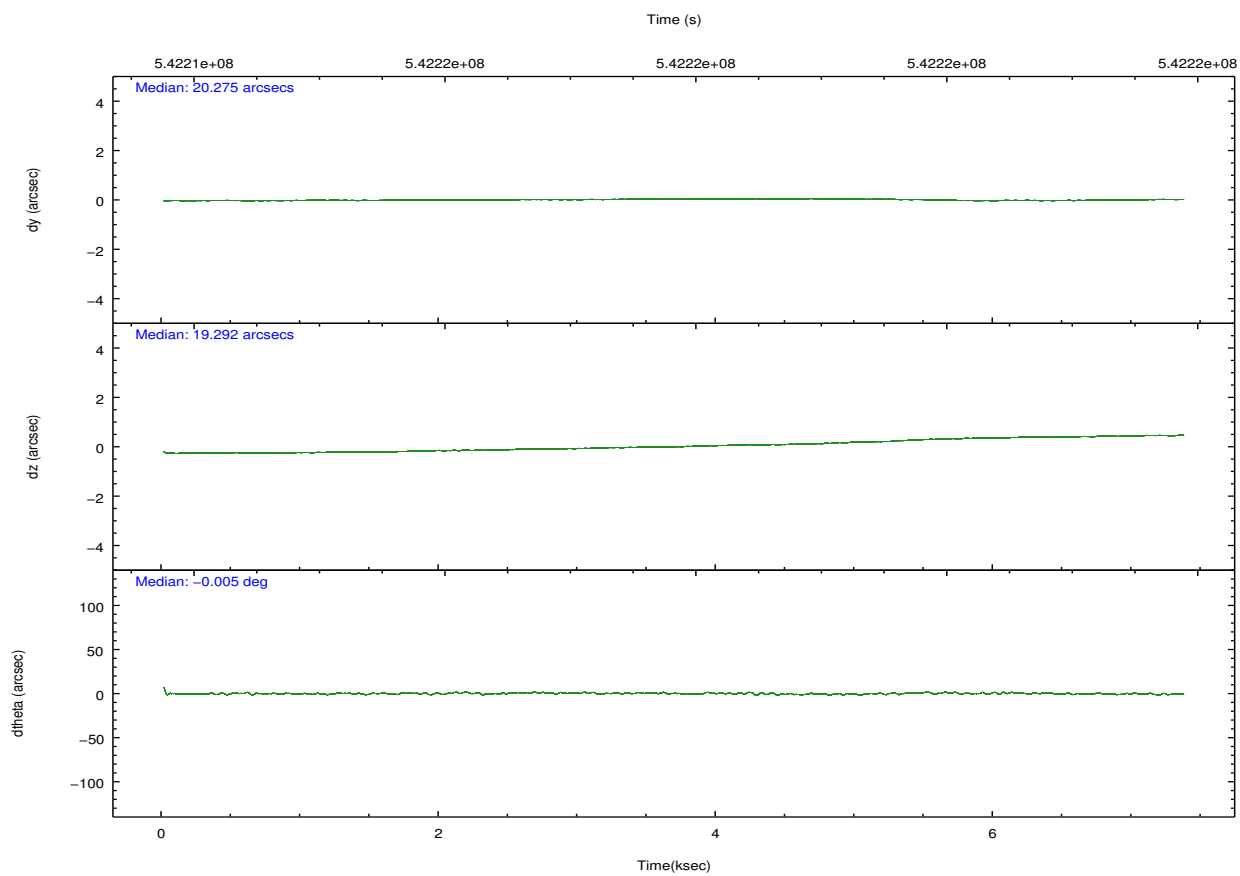
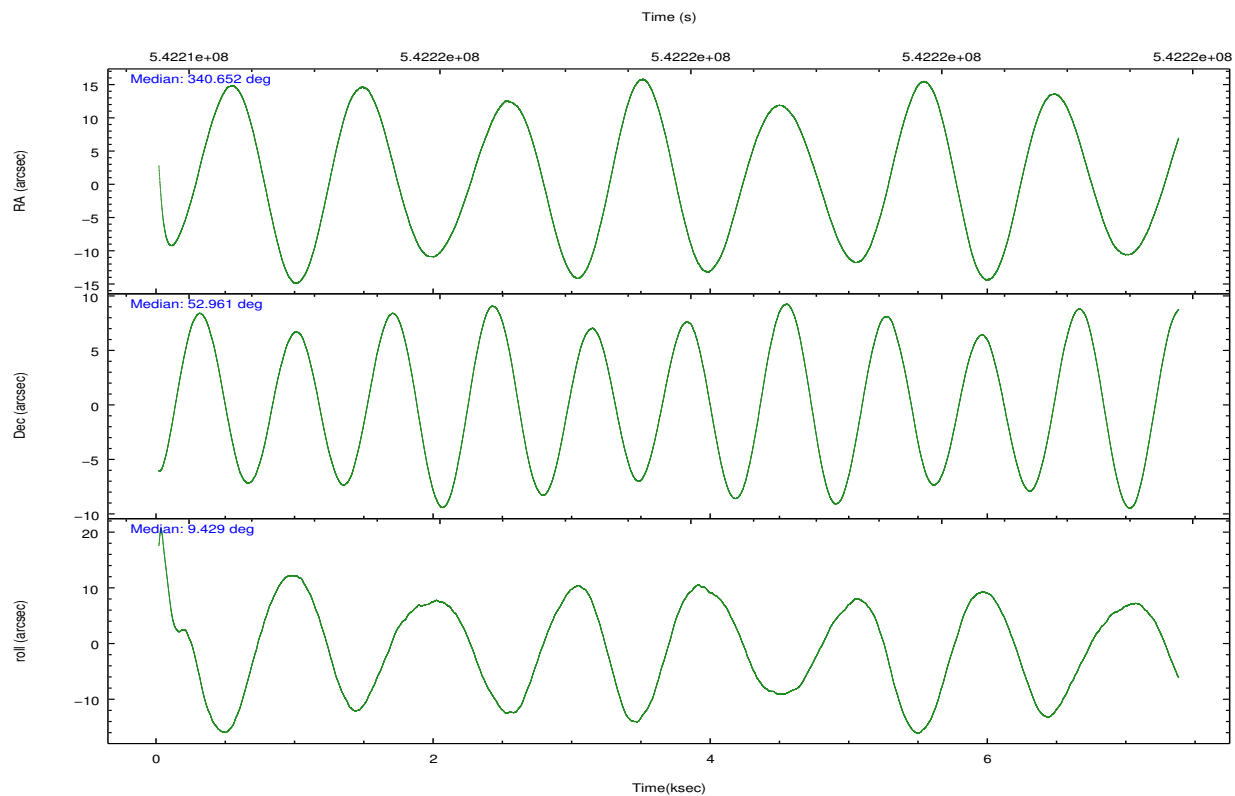
	ccd 0	ccd 1	ccd 2	ccd 3	ccd 6	ccd 7		ccd 0	ccd 1	ccd 2	ccd 3	ccd 6	ccd 7
level 1 events	28697	31681	33682	31157	32341	42189	grade 0 events	1351	3401	3657	1817	1295	1523
rejected events	24963	25670	27202	26963	28480	23741		4%	10%	10%	5%	4%	3%
rejected %	86%	81%	80%	86%	88%	56%	grade 1 events	10	25	27	18	20	52
								0%	0%	0%	0%	0%	0%
							grade 2 events	940	982	1172	884	920	3855
								3%	3%	3%	2%	2%	9%
							grade 3 events	359	411	457	362	377	1540
								1%	1%	1%	1%	1%	3%
							grade 4 events	353	373	444	371	378	1478
								1%	1%	1%	1%	1%	3%
							grade 5 events	1451	1518	1416	1725	1591	4244
								5%	4%	4%	5%	4%	10%
							grade 6 events	735	849	757	766	893	10057
								2%	2%	2%	2%	2%	23%
							grade 7 events	23498	24122	25752	25214	26867	19440
								81%	76%	76%	80%	83%	46%

2.2 Compared Parameters

Parameter	Planned	Actual	Parameter	Planned	Actual
Instrument	ACIS	ACIS	Obspar format version number	7	7
Detector	ACIS-012367	ACIS-012367	Obspar file type	PREDICTED	ACTUAL
Grating	NONE	NONE	Obspar update status	NONE	UPDATED
Data mode	VFAINT	VFAINT	CCD I0 on	Y	Y
Observation mode	POINTING	POINTING	CCD I1 on	Y	Y
[deg] Pointing RA	340.617045	340.6522626014388	CCD I2 on	Y	Y
[deg] Pointing Dec	52.943497	52.9611224277395	CCD I3 on	Y	Y
[deg] Pointing Roll	9.255437	9.43604514747523	CCD S0 on	N	N
[mm] SIM focus pos	-0.782348	-0.7809083437167272	CCD S1 on	N	N
[mm] SIM defocus	0	0.001439871863259334	CCD S2 on	O2	Y
[mm] SIM translation stage pos	-233.592463	-233.5874344608287	CCD S3 on	O1	Y
[mm] SIM translation stage offset	0	-0.005018542100998502	CCD S4 on	N	N
[s] Observation start time (MET)	542215026.184000	542213064.31101	CCD S5 on	N	N
Observation start date	2015-03-08T15:15:59	2015-03-08T14:44:24	Number of optional ACIS chips dropped	0	0
[s] Observation end time (MET)	542221526.184000	542221860.349	On-chip summing requested	N	N
Observation end date	2015-03-08T17:04:19	2015-03-08T17:11:00	Subarray requested	NONE	NONE
Read mode	TIMED	TIMED	Alternating exposures requested	N	N
			[s] Primary exposure time	0.000000	3.2

2.3 Aspect



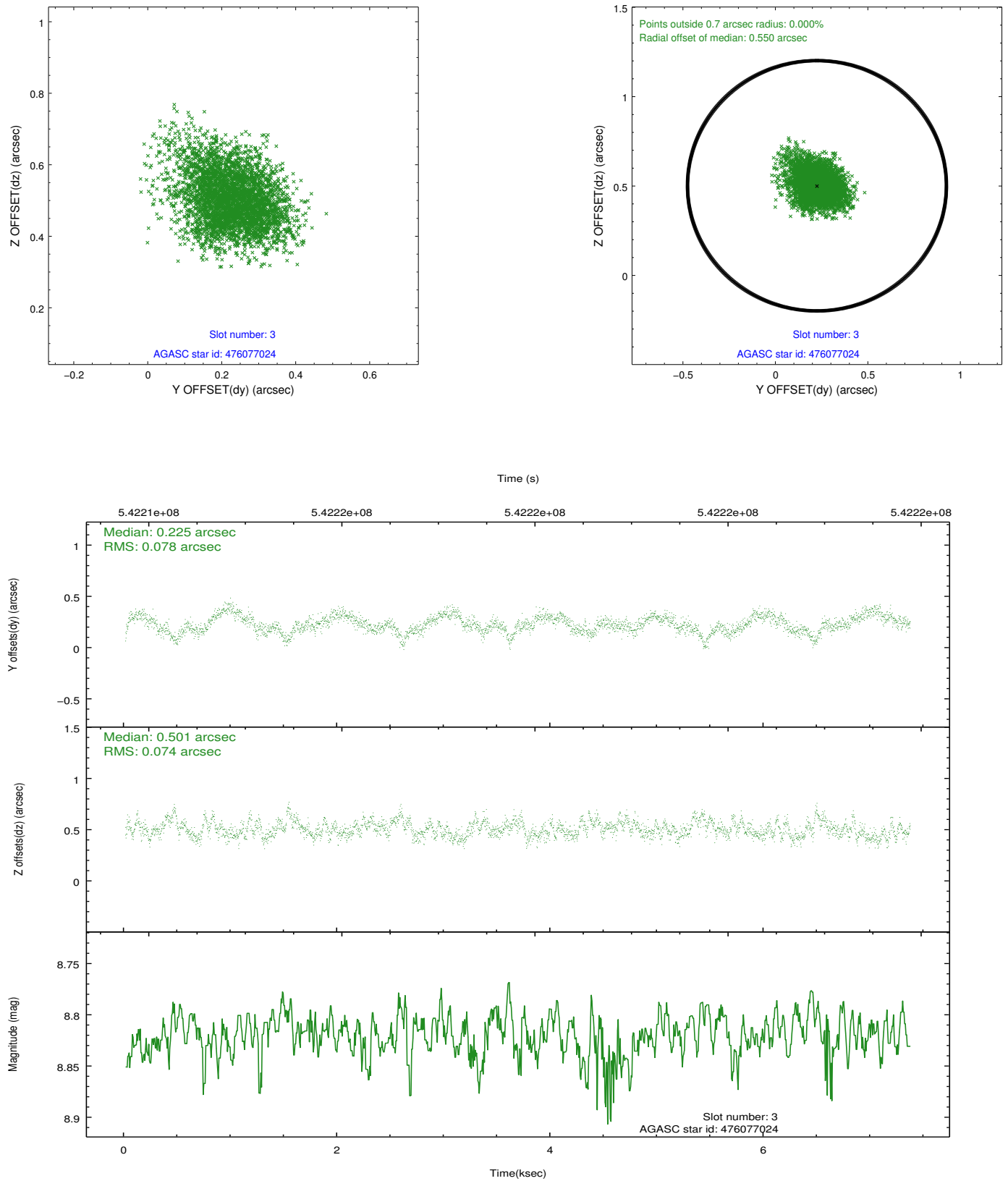


Slot Statistics

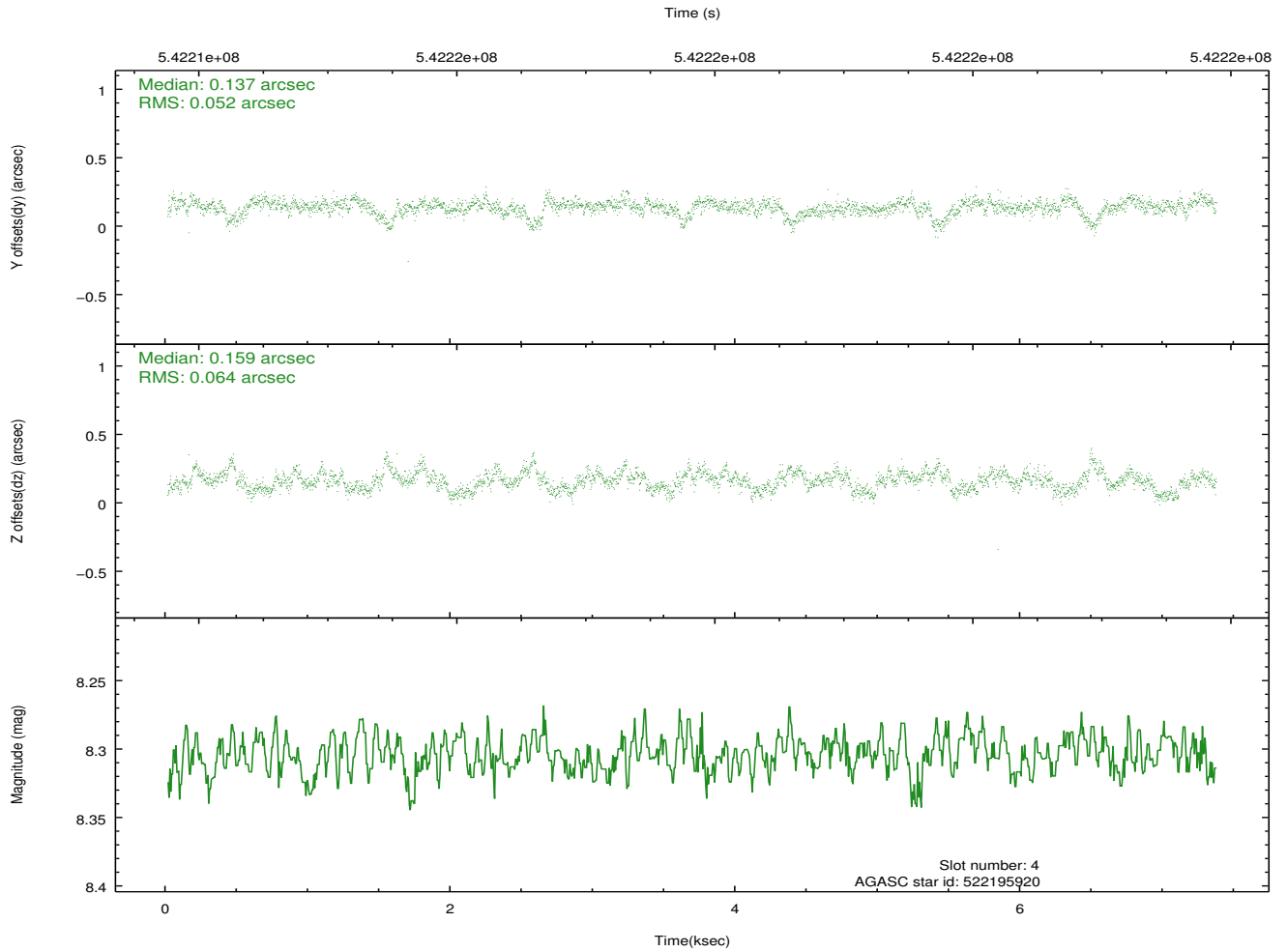
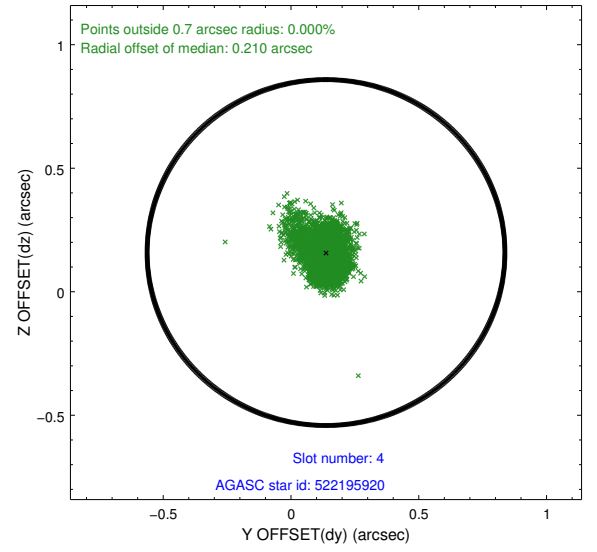
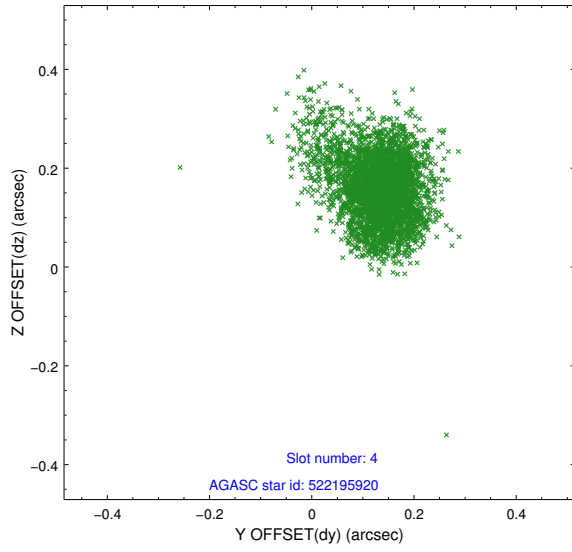
slot	status	used	id	mag	n_pts	med_dy	med_dz	dr1	dr2	ra	dec	mean_y	mean_z
0	FID		ACIS-I-2	6.98	1796	-0.118	-0.043	0.009	0.015	0.000000	0.000000	-775.21	-849.50
1	FID		ACIS-I-4	7.02	1796	0.317	0.080	0.008	0.014	0.000000	0.000000	2138.83	1056.55
2	FID		ACIS-I-5	7.07	1796	-0.300	0.032	0.009	0.016	0.000000	0.000000	-1828.32	1055.03
3	GUIDE	used	476077024	8.82	3592	0.225	0.501	0.114	0.187	340.083340	52.280622	-1542.55	-2161.69
4	GUIDE	used	522195920	8.30	3587	0.137	0.159	0.085	0.146	340.534111	52.561582	-399.98	-1328.14
5	GUIDE	used	522197712	8.37	3591	0.100	0.056	0.160	0.613	341.160967	52.624062	989.59	-1321.89
6	GUIDE	used	522203216	8.58	3591	-0.135	-0.428	0.138	0.223	340.893026	53.647972	989.40	2408.70
7	GUIDE	used	522202320	6.92	3590	-0.350	-0.276	0.069	0.123	341.199728	53.302639	1445.96	1080.07

2.4 Star Slots

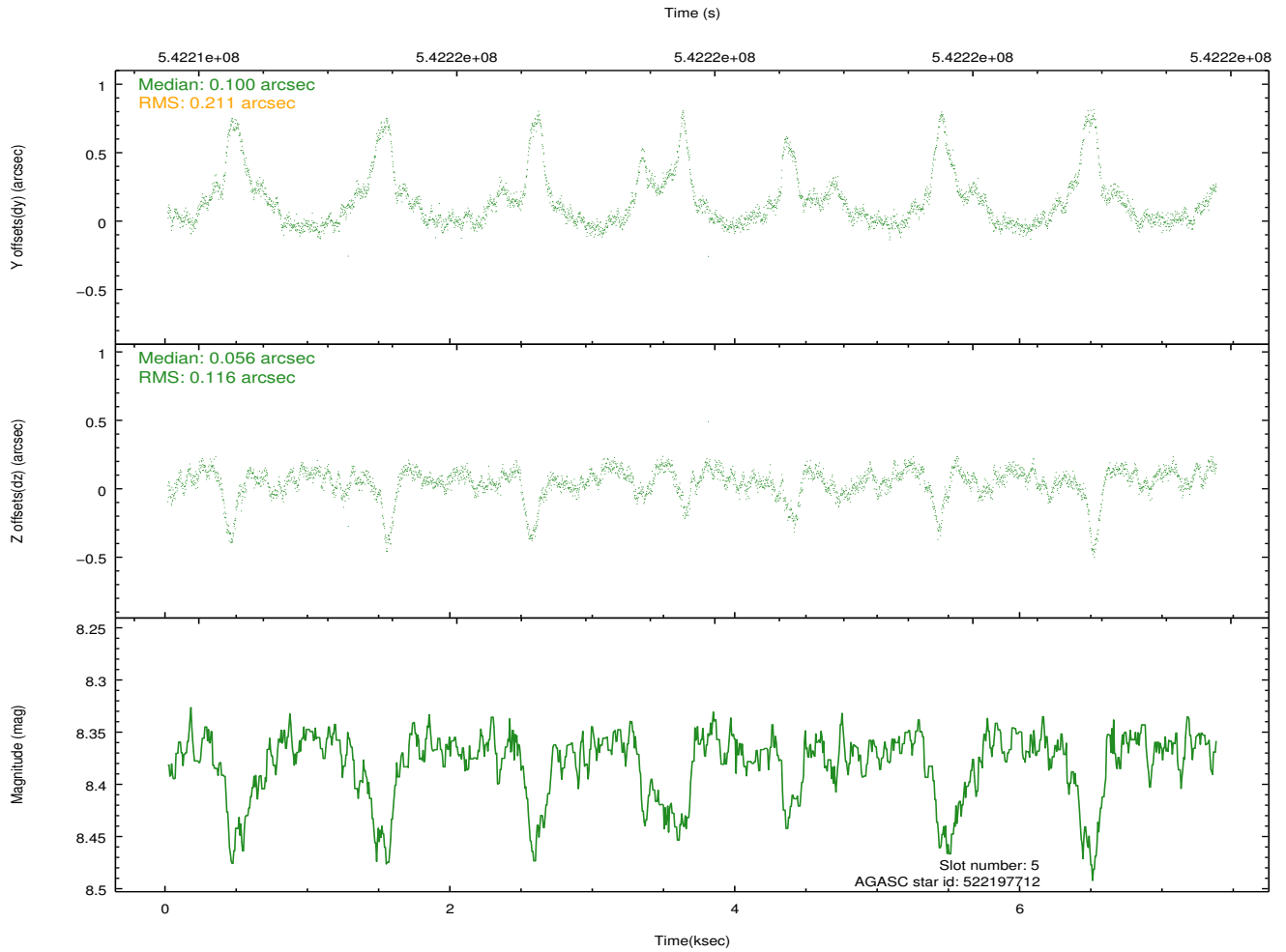
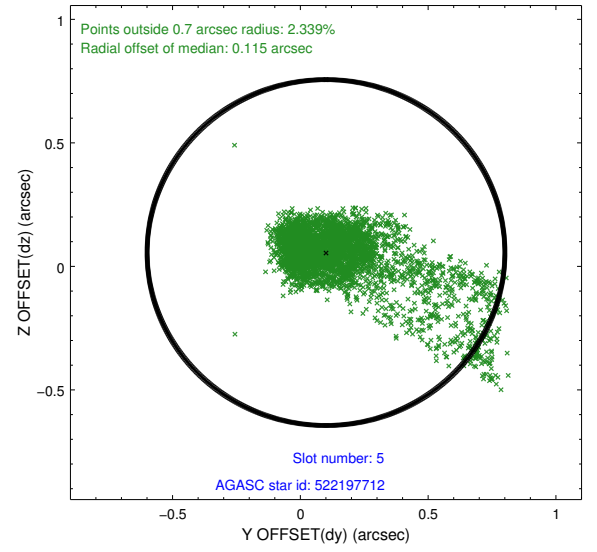
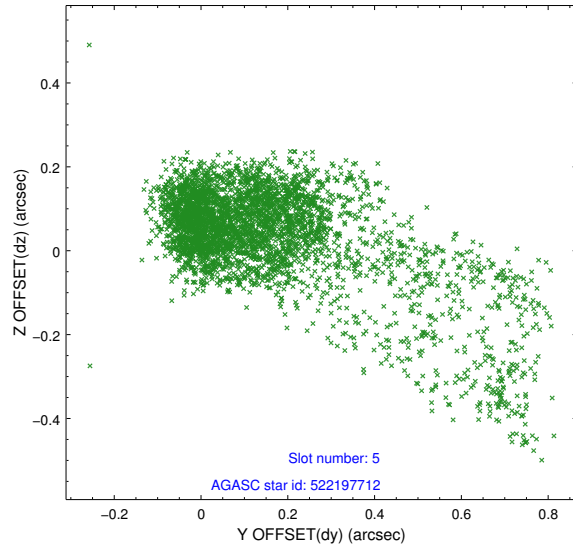
2.4.1 Slot 3



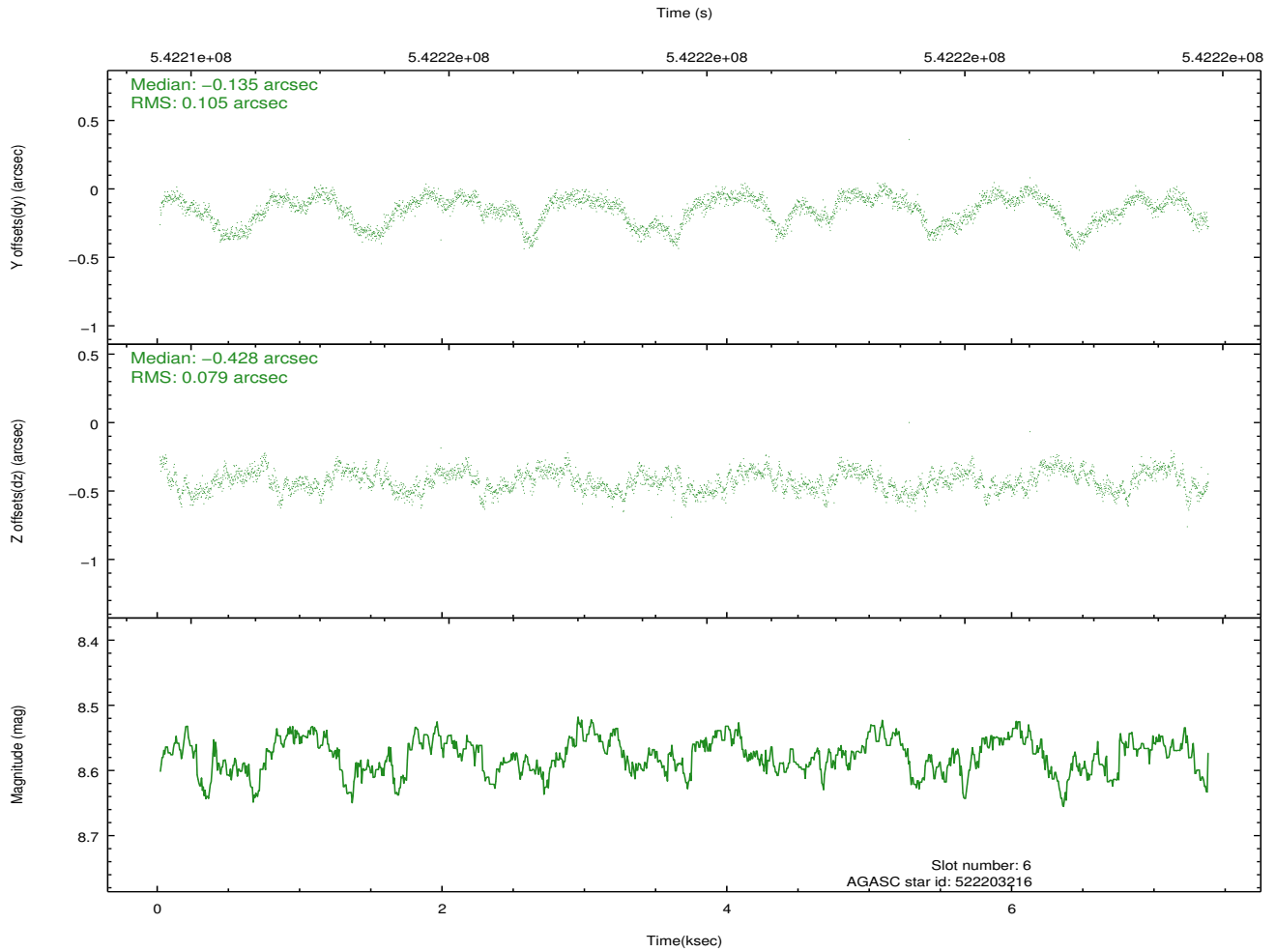
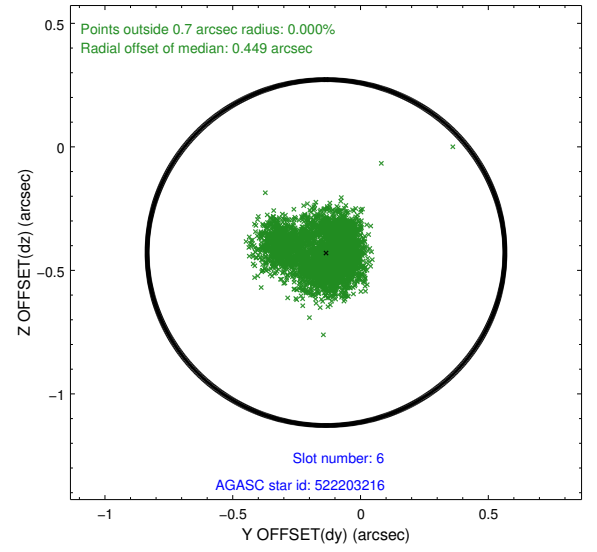
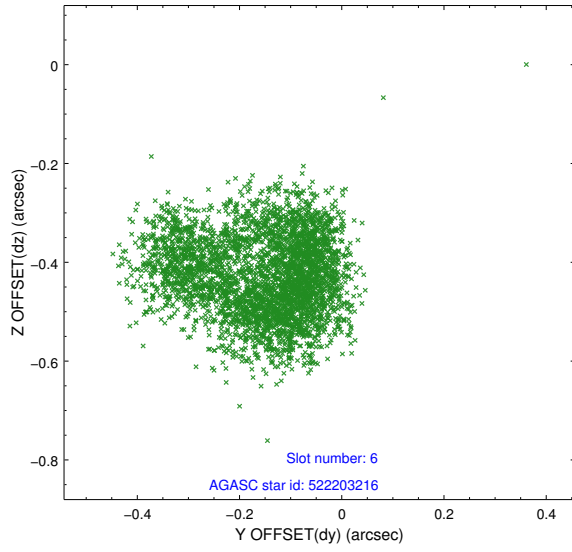
2.4.2 Slot 4



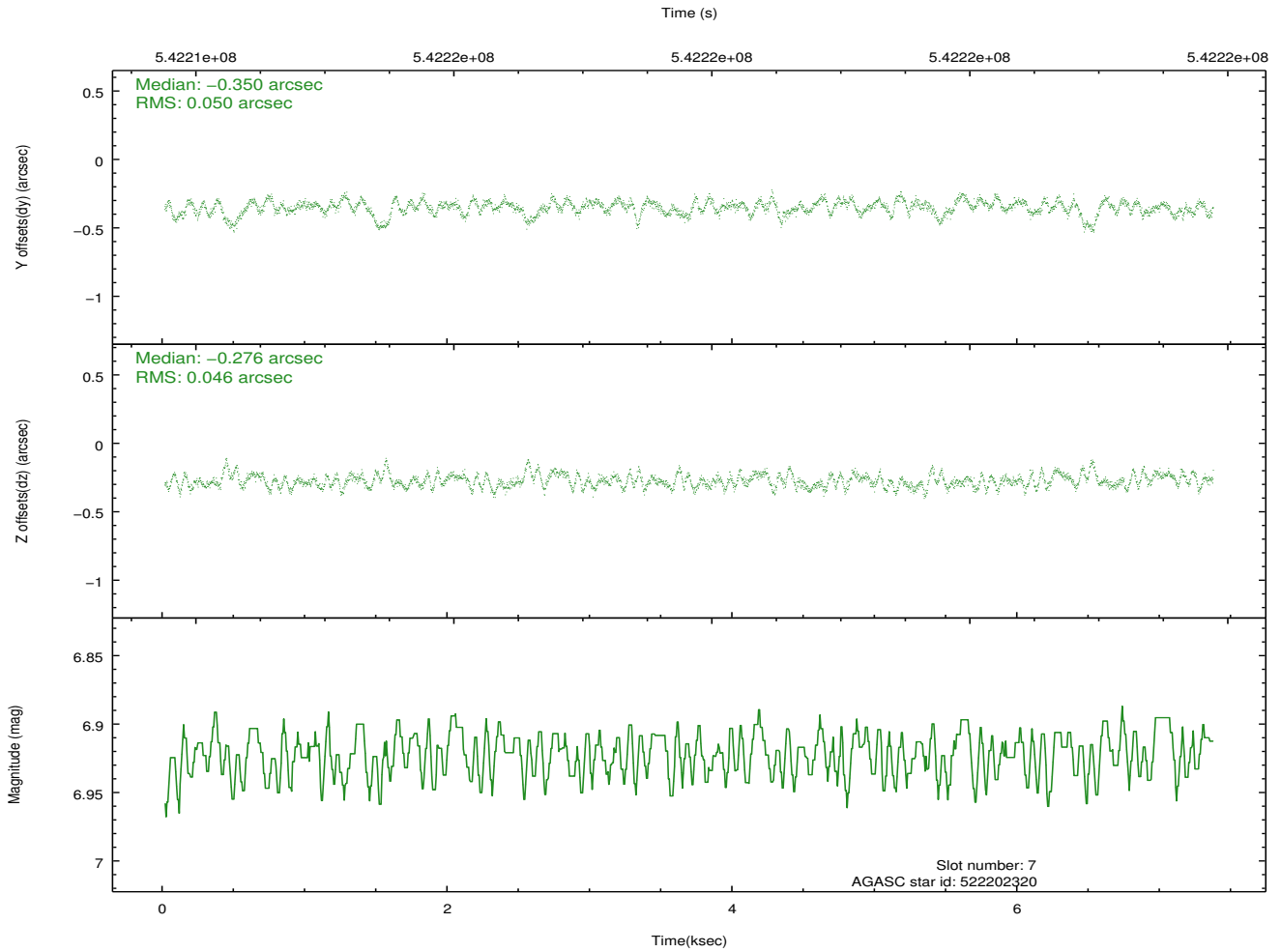
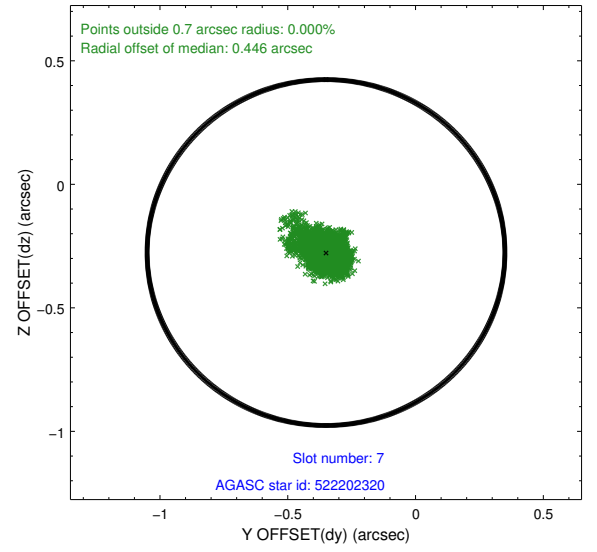
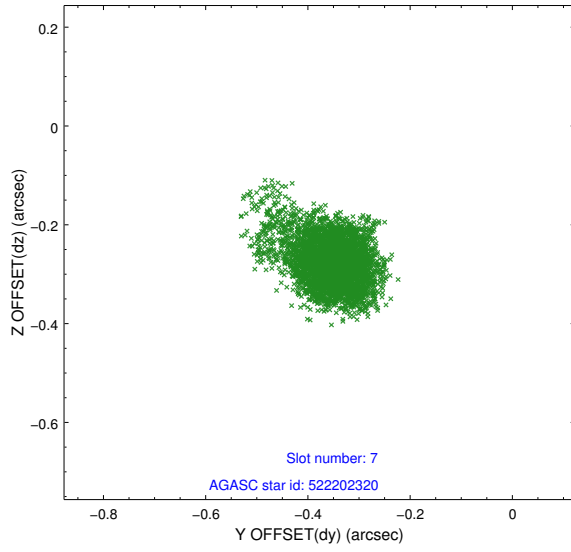
2.4.3 Slot 5



2.4.4 Slot 6

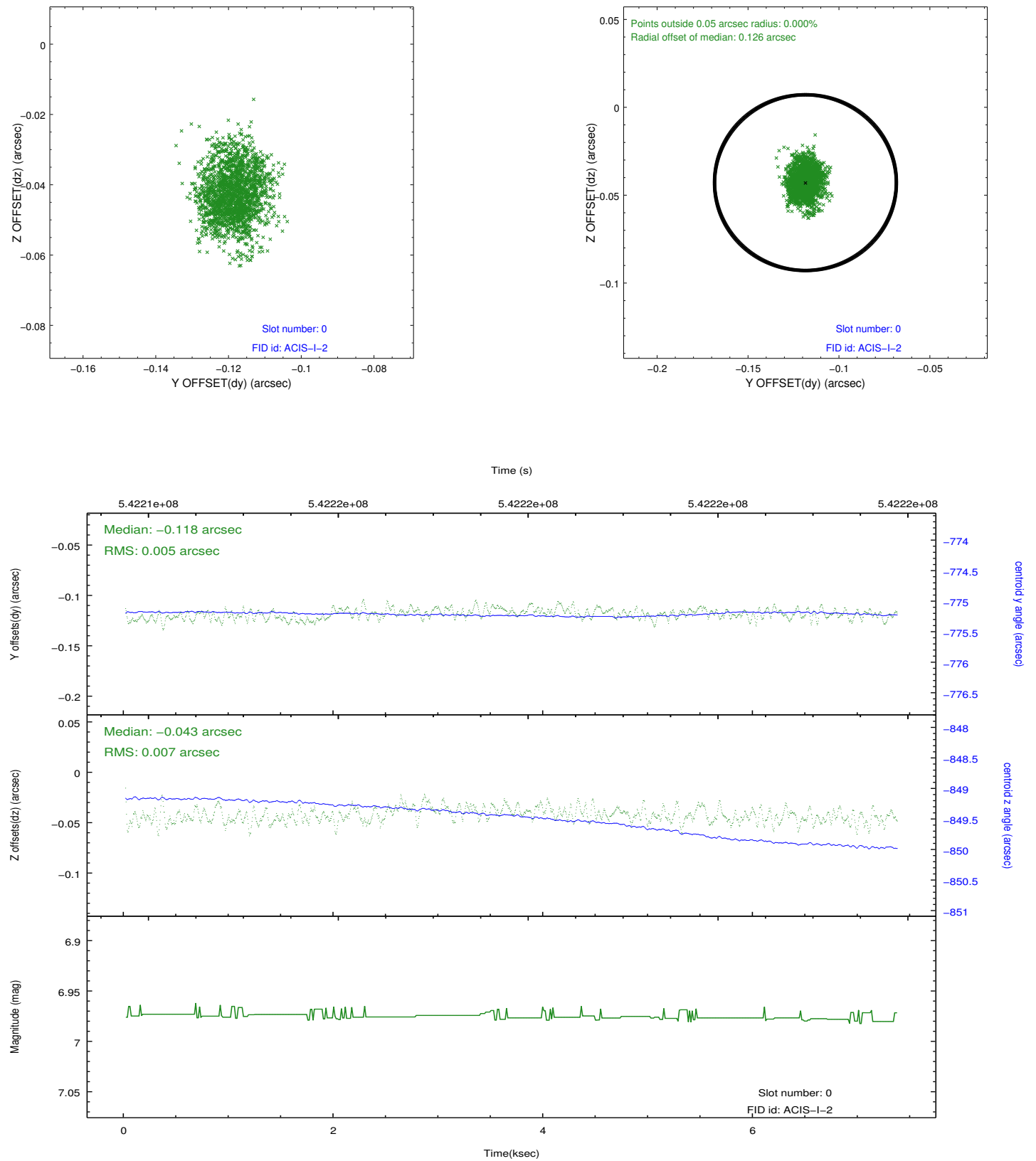


2.4.5 Slot 7

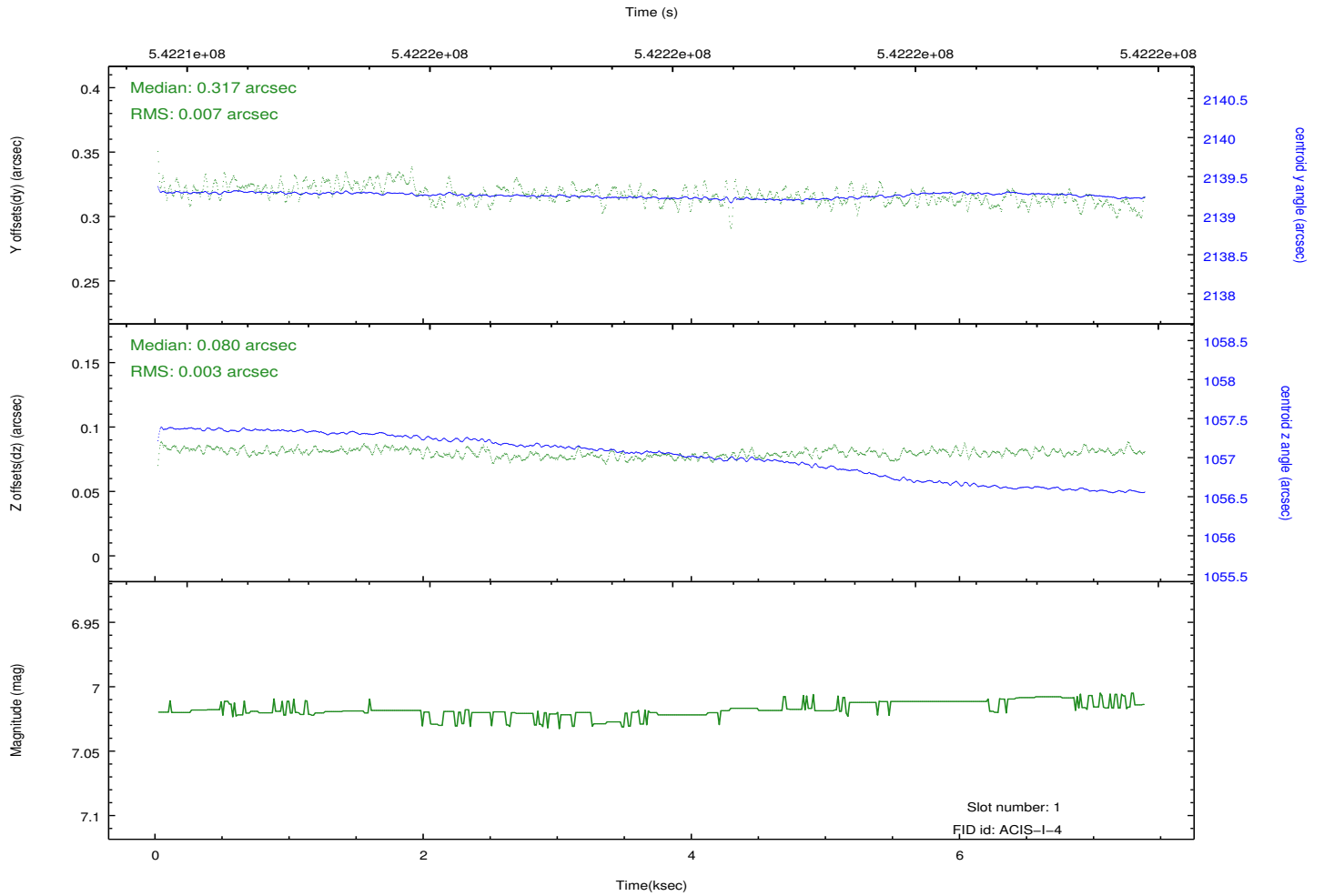
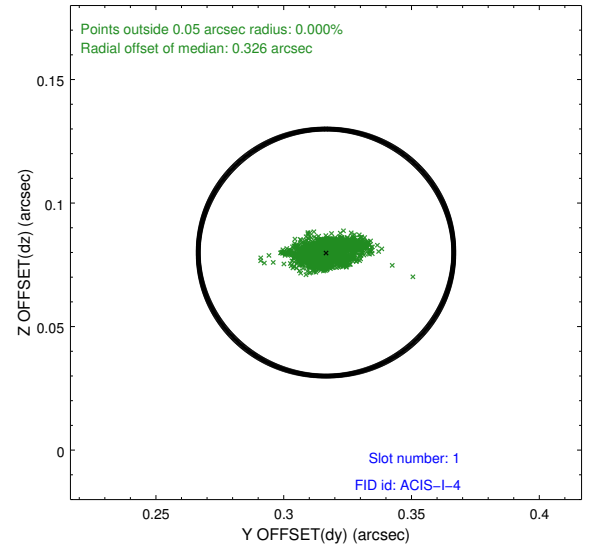
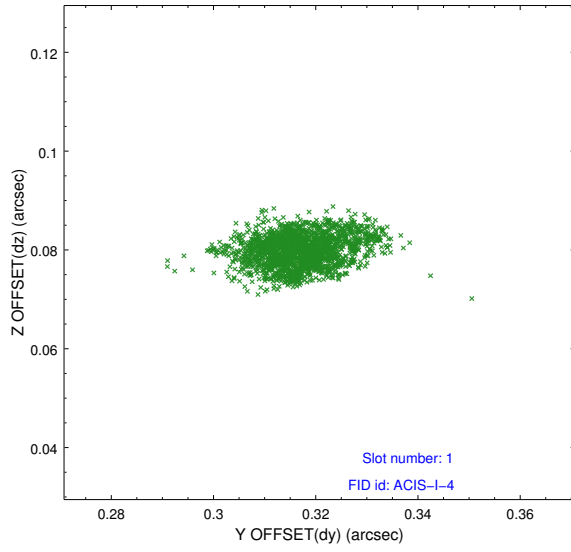


2.5 FID Slots

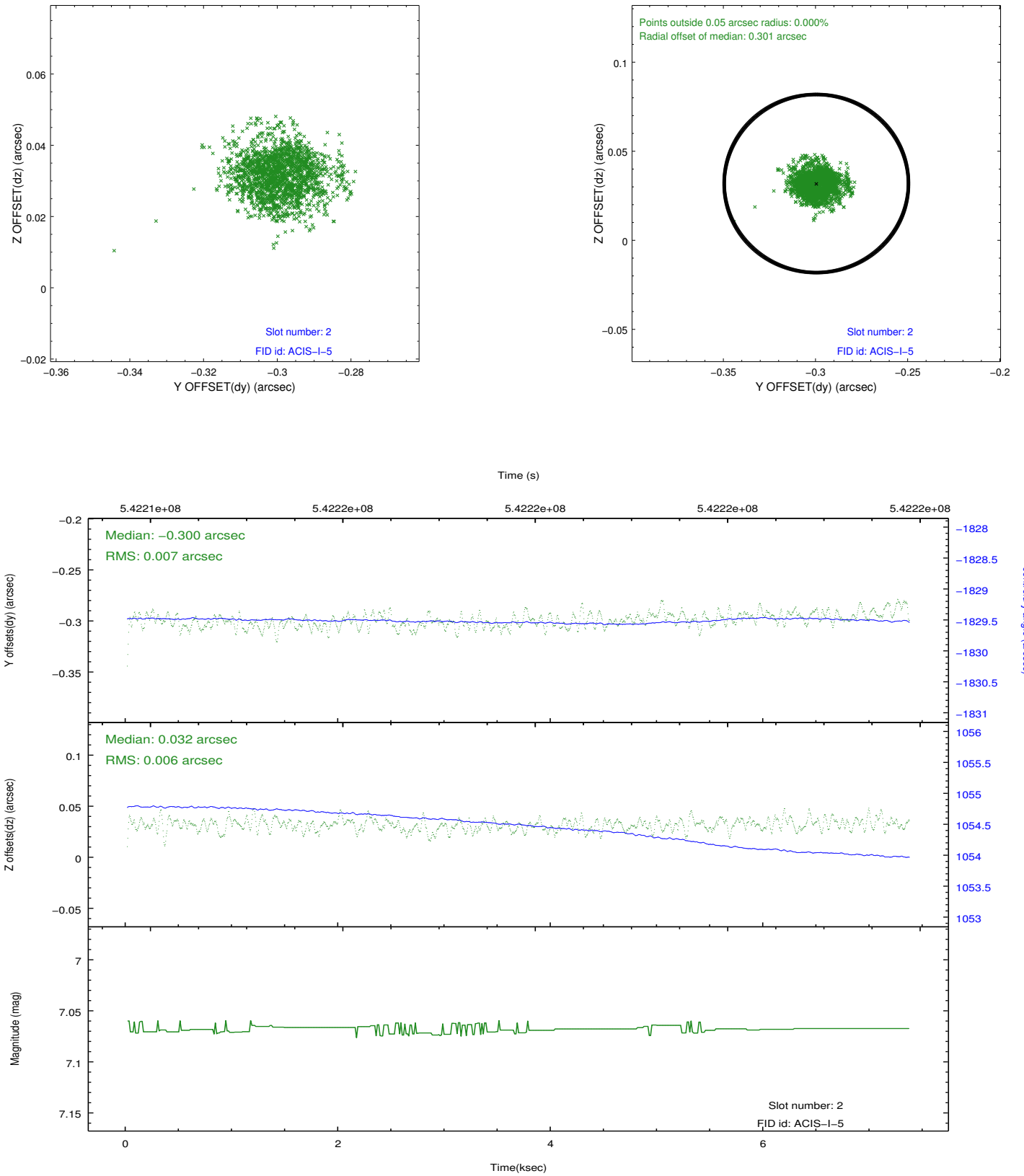
2.5.1 Slot 0



2.5.2 Slot 1



2.5.3 Slot 2



A Summary

A.1 Status

V&V Scientist	Jen Lauer
V&V Date (YYYY-MM-DD)	2015.03.09
V&V Edition	1
V&V Disposition and Status	OK
V&V Charge Time	6.4640000963211

A.2 Comments