

V&V Reference Report

L2 ASCDS Version : 7.6.9

Observation 1646 - L2 Version 001
Chandra X-Ray Center

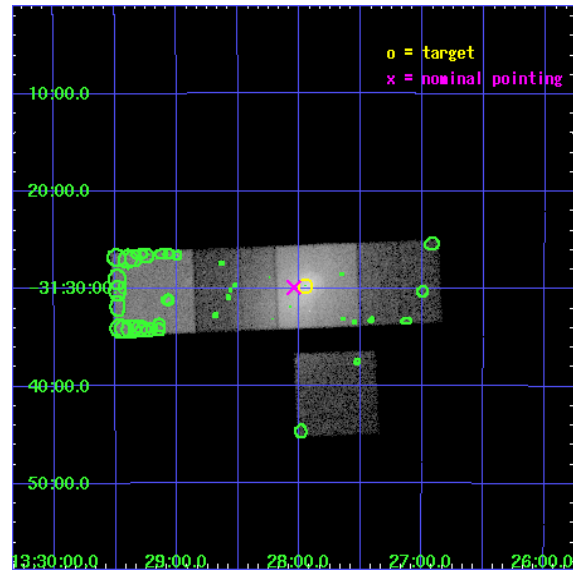
L2 Processing Date : Nov 14 2006

Contents

1	Front	2
2	OBI	3
2.1	OBI	3
2.1.1	Images	3
2.1.2	Bias	3
2.1.3	Parameters	4
2.1.4	Events	4
2.2	Compared Parameters	5
2.3	Aspect	6
2.4	Star Slots	9
2.4.1	Slot 3	9
2.4.2	Slot 4	10
2.4.3	Slot 5	11
2.4.4	Slot 6	12
2.4.5	Slot 7	13
2.5	FID Slots	14
2.5.1	Slot 0	14
2.5.2	Slot 1	15
2.5.3	Slot 2	16
3	Point Sources	17
A	Summary	18
A.1	Status	18
A.2	Comments	18

1 Front

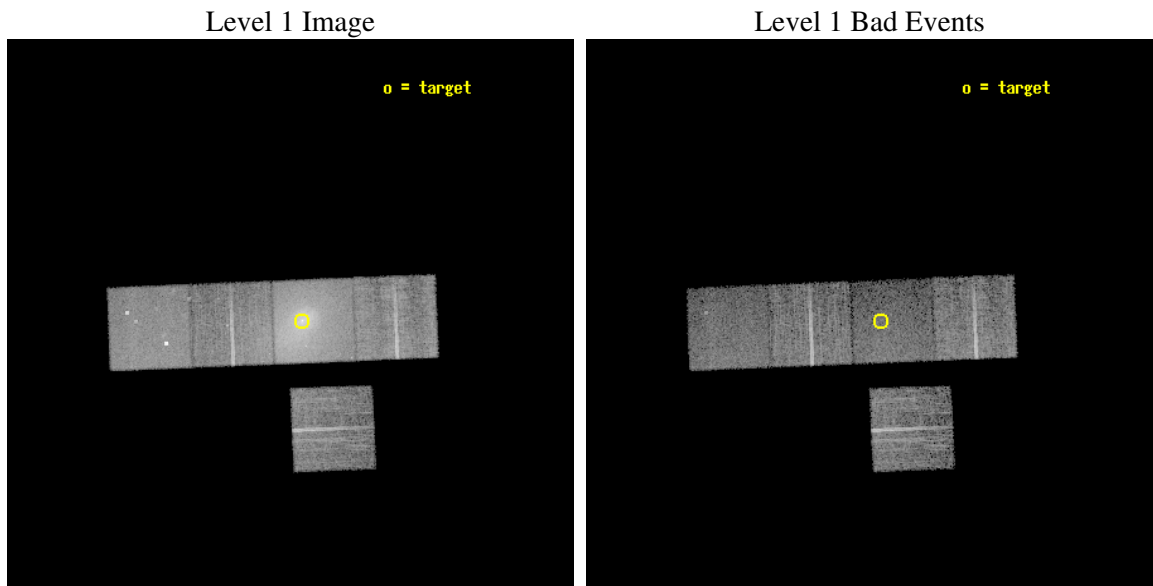
seq_num	800114
obs_id	1646
title	THE COOLING FLOW IN A3558
observer	Prof Andrew Fabian
object	A3558
dtcycle	0
cycle	P
ra_targ	201.987125
dec_targ	-31.495528
ra_nom	202.01141226157
dec_nom	-31.498152042688
roll_nom	357.64571298896
revision	2
ontime	14610.299971908
livetime	14419.405646829
ontime3	14607.159041598
ontime5	14610.299971908
ontime6	14607.159011662
ontime7	14610.299971908
ontime8	14610.299971908
l2events	225761



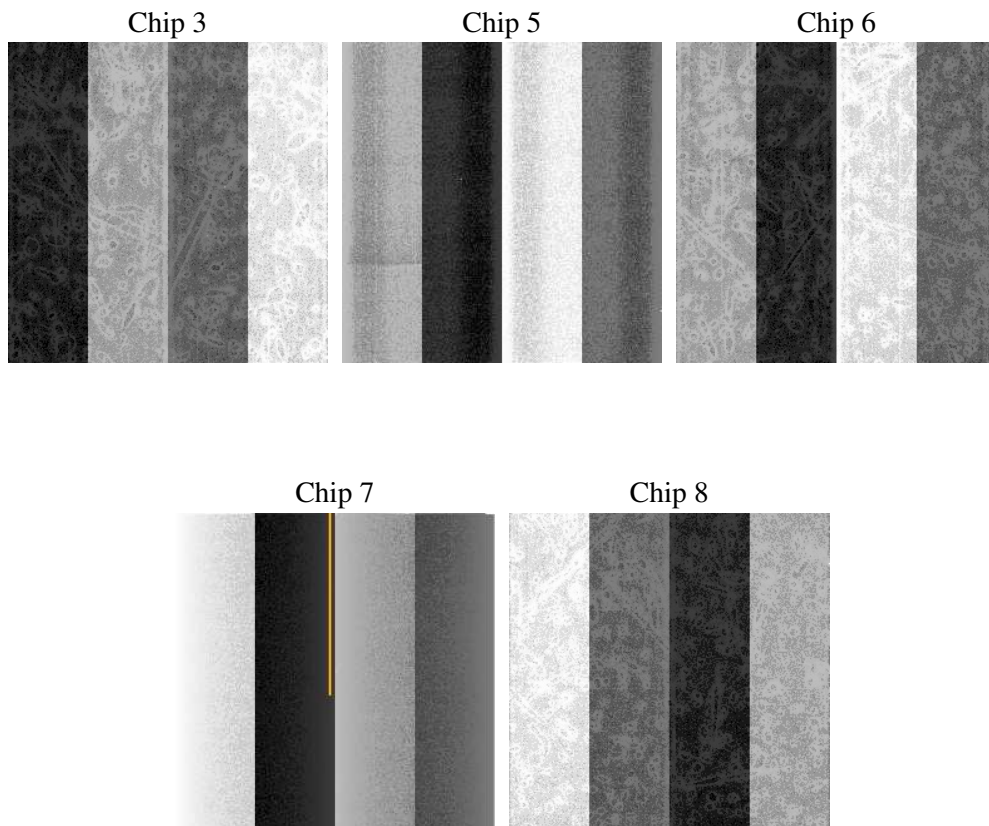
2 OBI

2.1 OBI

2.1.1 Images



2.1.2 Bias



2.1.3 Parameters

obi_num	1
ascdsver	7.6.9
caldbver	3.2.4
date	2006-11-14T17:00:46
revision	2

sched_exp_time	14685.000000
ontime	14615.081726268
ontime3	14611.940795958
ontime5	14615.081726268
ontime6	14611.9407361
ontime7	14615.081726268
ontime8	14615.081696346
l1events	509731

2.1.4 Events

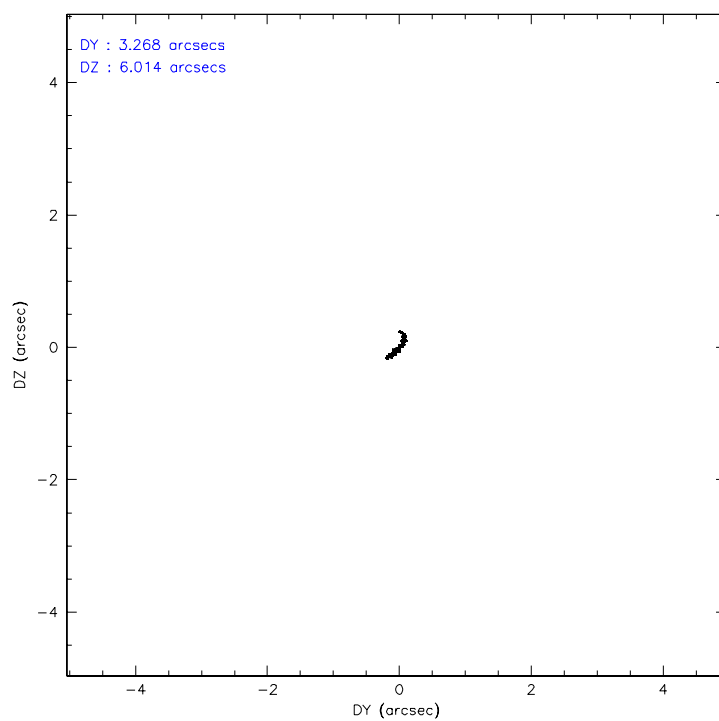
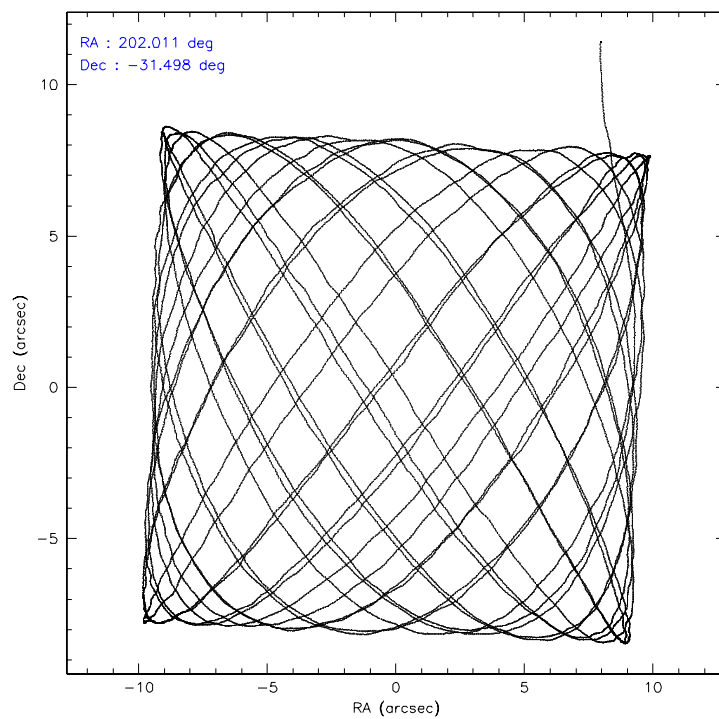
	ccd 3	ccd 5	ccd 6	ccd 7	ccd 8
level 1 events	67382	94557	86589	171718	89485
rejected events	57581	42625	58246	39559	63335
rejected %	85%	45%	67%	23%	70%

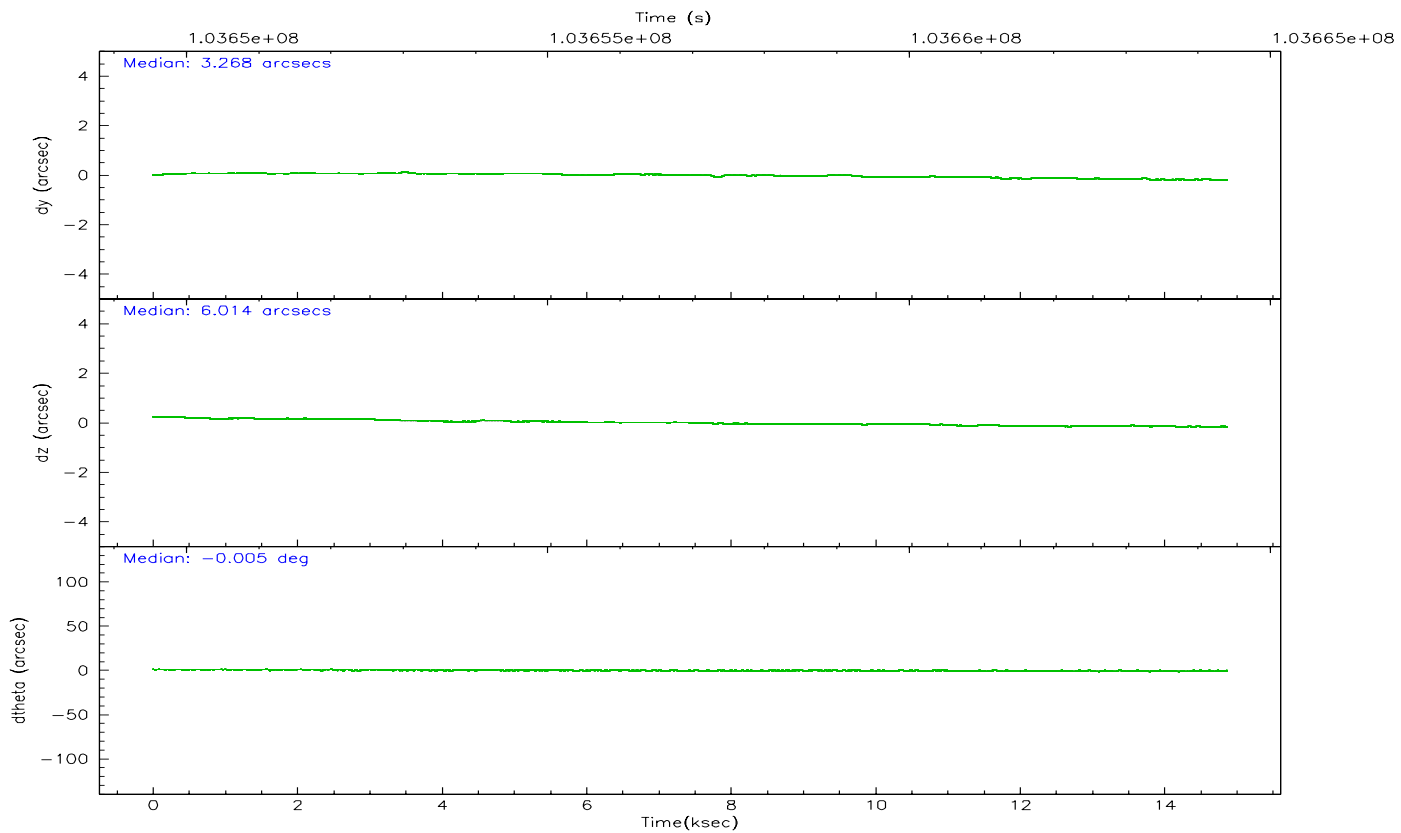
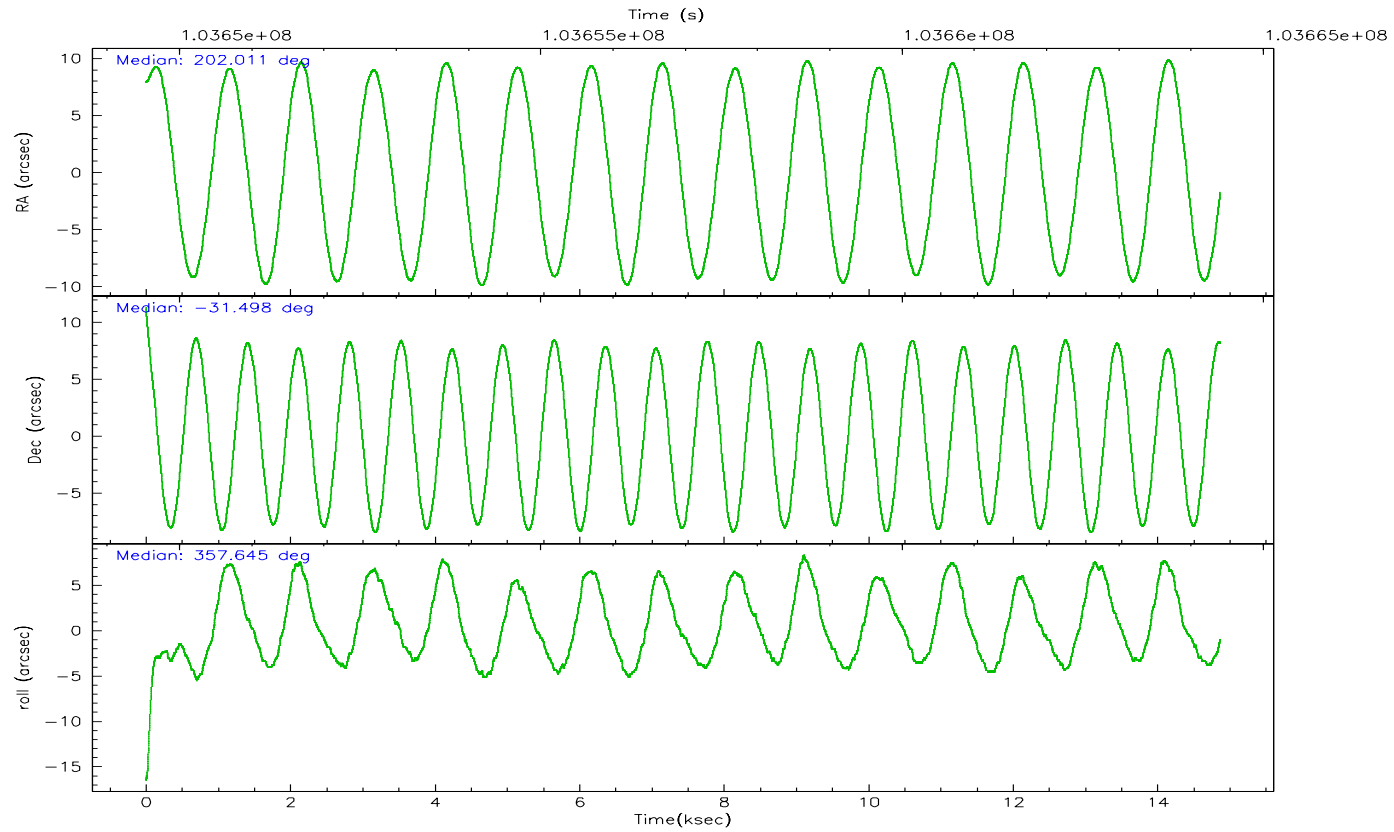
	ccd 3	ccd 5	ccd 6	ccd 7	ccd 8
grade 0 events	5268	8452	20298	30315	11653
	7%	8%	23%	17%	13%
grade 1 events	38	222	84	53	77
	0%	0%	0%	0%	0%
grade 2 events	1653	15460	3514	36307	4409
	2%	16%	4%	21%	4%
grade 3 events	785	1785	1342	12958	2832
	1%	1%	1%	7%	3%
grade 4 events	817	1704	1308	12631	2605
	1%	1%	1%	7%	2%
grade 5 events	2163	4338	2441	5781	3282
	3%	4%	2%	3%	3%
grade 6 events	1281	24541	1887	39975	4655
	1%	25%	2%	23%	5%
grade 7 events	55377	38055	55715	33698	59972
	82%	40%	64%	19%	67%

2.2 Compared Parameters

Parameter	Planned	Actual	Parameter	Planned	Actual
Instrument	ACIS	ACIS	Obspar format version number	6	6
Detector	ACIS-35678	ACIS-35678	Obspar file type	PREDICTED	ACTUAL
Grating	NONE	NONE	Obspar update status	NONE	UPDATED
Data mode	VFAINT	VFAINT	Number of optional ACIS chips dropped	0	0
Observation mode	POINTING	POINTING	On-chip summing requested	N	N
Pointing RA	201.983184	202.0114122615688	Subarray requested	NONE	NONE
Pointing Dec	-31.511059	-31.49815204268796	Alternating exposures requested	N	N
Pointing Roll	357.474333	357.6457129889588	Primary exposure time	0.000000	3.1
SIM focus pos (mm)	-0.684267	-0.6828225247311905			
SIM defocus (mm)	0	0.001444936568705701			
SIM translation stage pos (mm)	-190.132523	-190.1400660498719			
SIM translation stage offset (mm)	0	0.00754346686406393			
Observation start time	103649714.184000	103648723.17165			
Observation start date	2001-04-14T15:34:10	2001-04-14T15:18:43			
Observation end time	103664399.184000	103664893.05978			
Observation end date	2001-04-14T19:38:55	2001-04-14T19:48:13			
Read mode	TIMED	TIMED			

2.3 Aspect



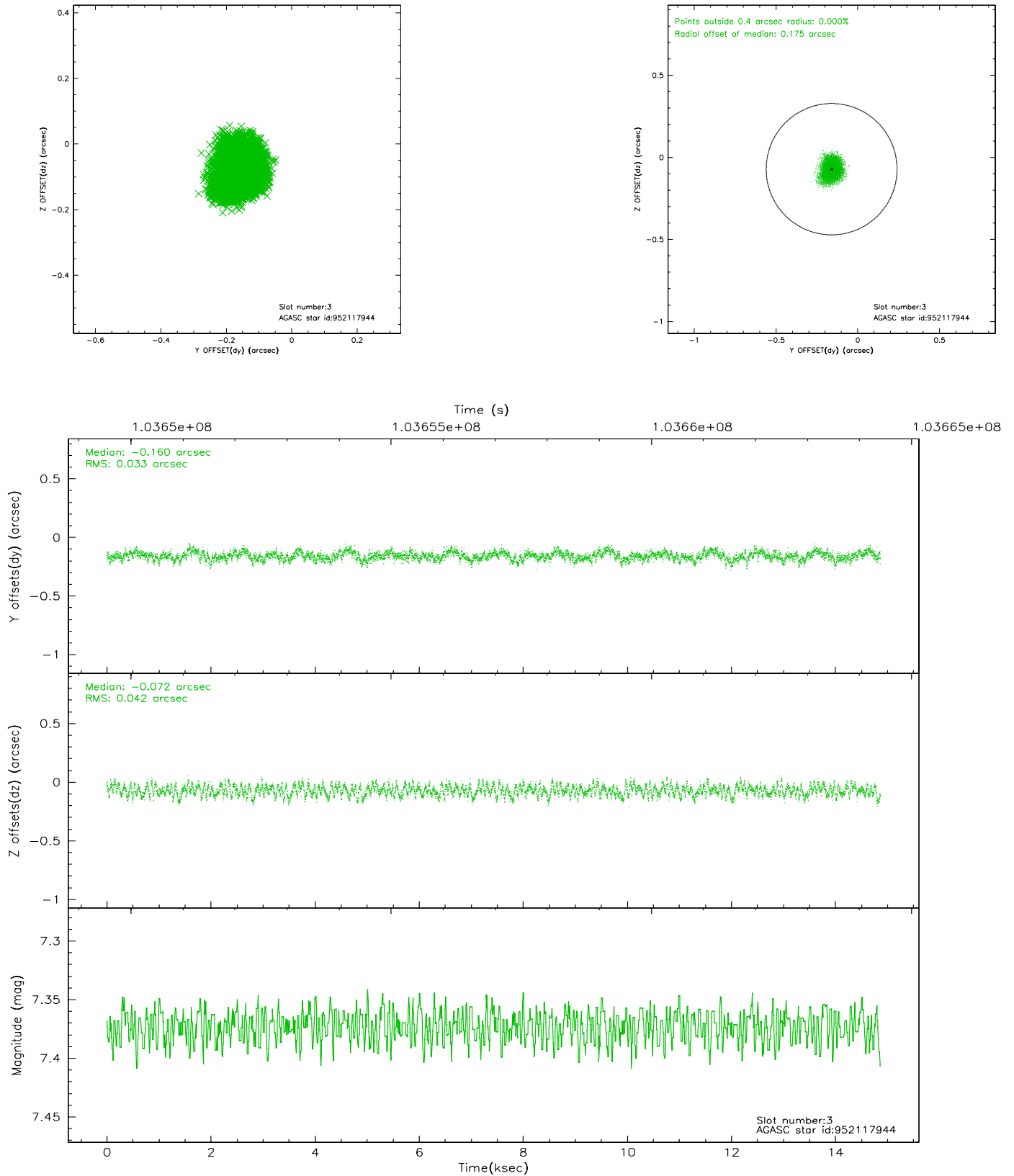


Slot Statistics

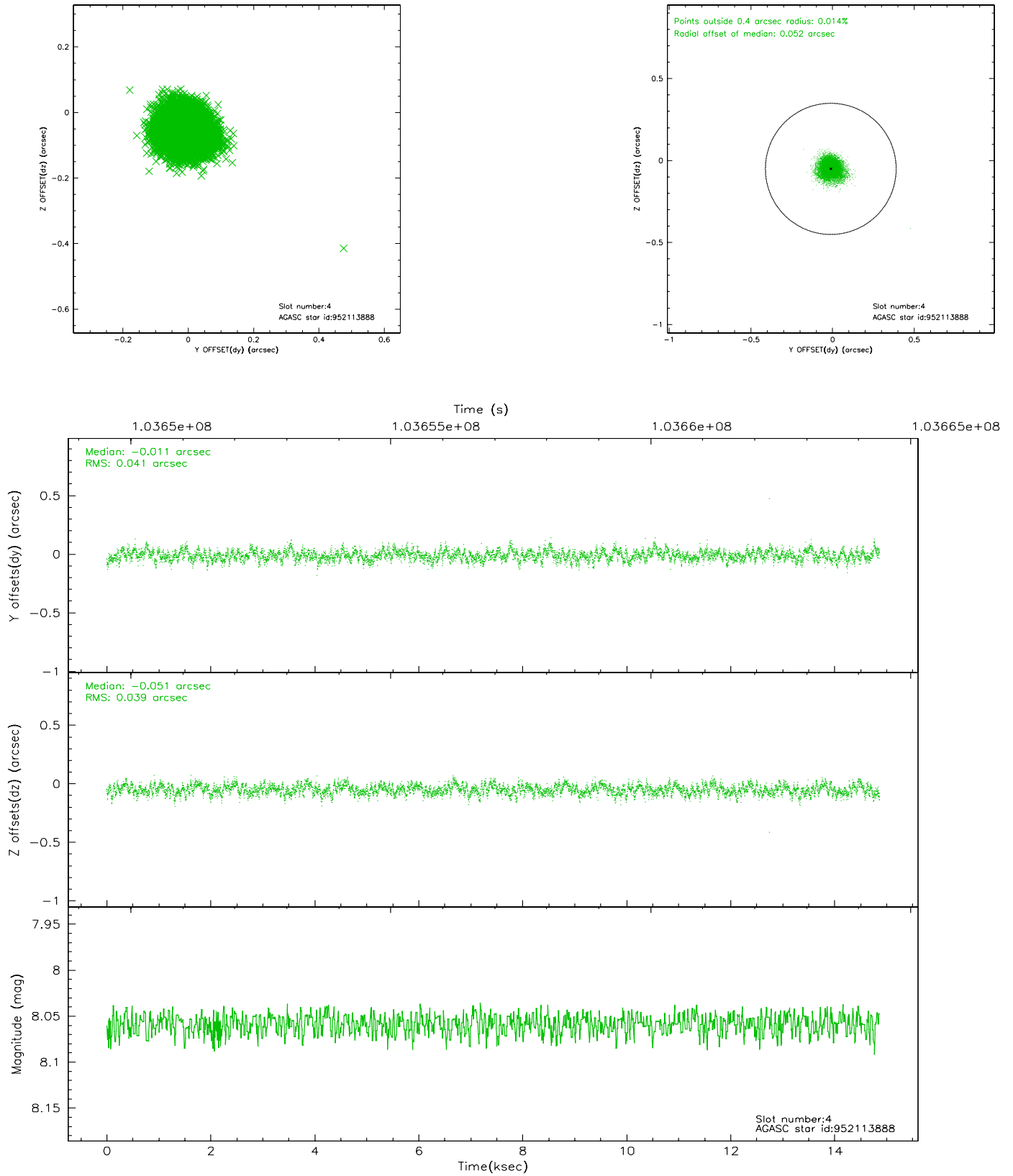
slot	status	id	mag	n_pts	med_dy	med_dz	dr1	dr2	ra	dec	mean_y	mean_z
0	FID	ACIS-S-2	7.12	3626	-0.010	0.036	0.007	0.011	0.000000	0.000000	-755.87	-1727.14
1	FID	ACIS-S-4	7.20	3626	-0.074	-0.005	0.006	0.010	0.000000	0.000000	2157.16	181.05
2	FID	ACIS-S-5	7.24	3626	0.053	-0.022	0.006	0.011	0.000000	0.000000	-1808.30	174.97
3	GUIDE	952117944	7.37	7252	-0.160	-0.072	0.058	0.092	202.242705	-31.044082	725.49	1713.13
4	GUIDE	952113888	8.06	7247	-0.011	-0.051	0.061	0.097	201.647854	-31.450482	-1038.35	170.46
5	GUIDE	952116240	8.37	7252	-0.000	-0.065	0.060	0.097	202.422973	-31.388320	1330.67	497.61
6	GUIDE	952114936	8.50	7250	0.126	-0.023	0.061	0.100	201.294532	-31.198626	-2167.47	1023.00
7	GUIDE	952646264	9.60	7247	0.044	0.209	0.098	0.164	201.642199	-32.039051	-956.03	-1946.67

2.4 Star Slots

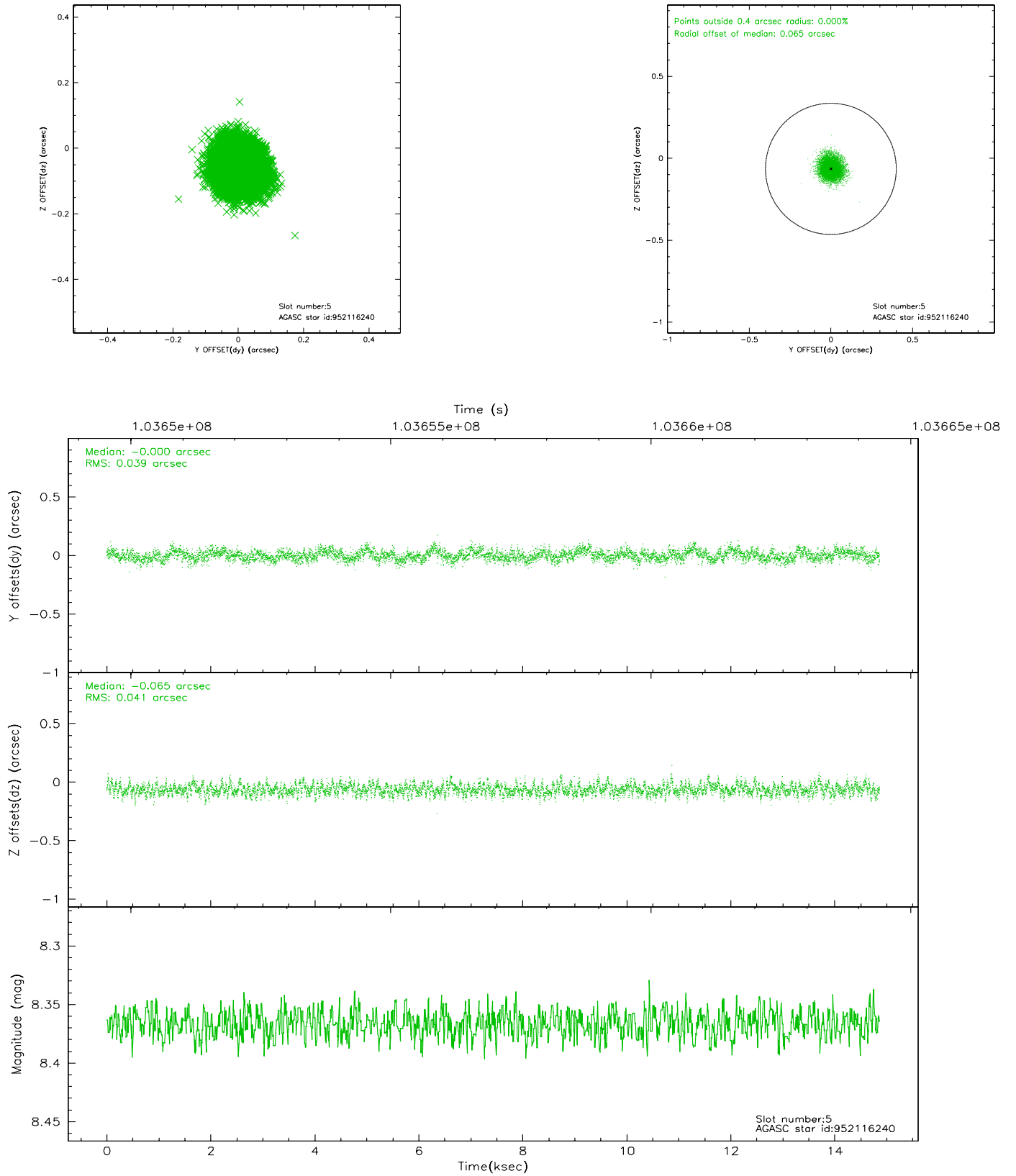
2.4.1 Slot 3



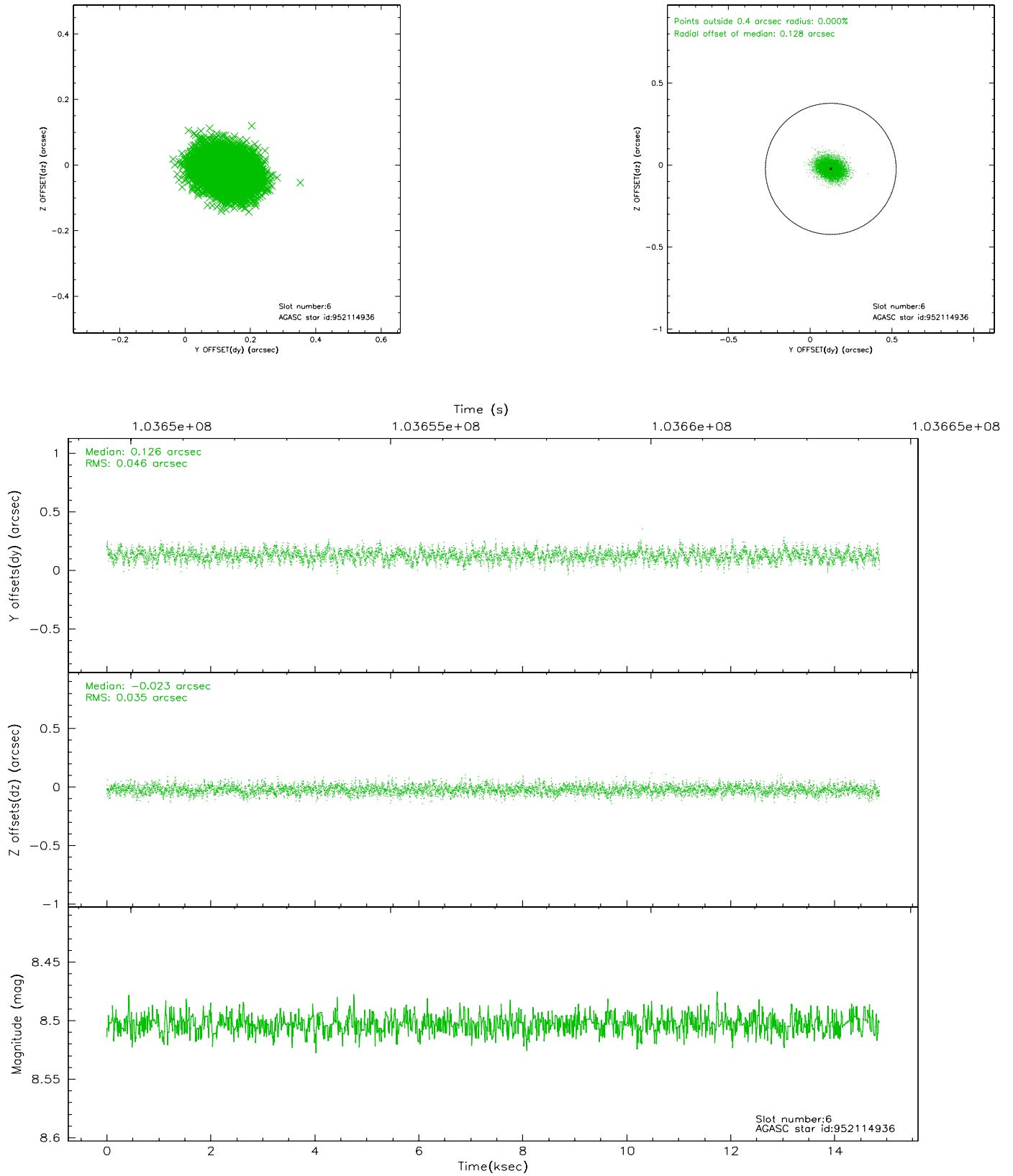
2.4.2 Slot 4



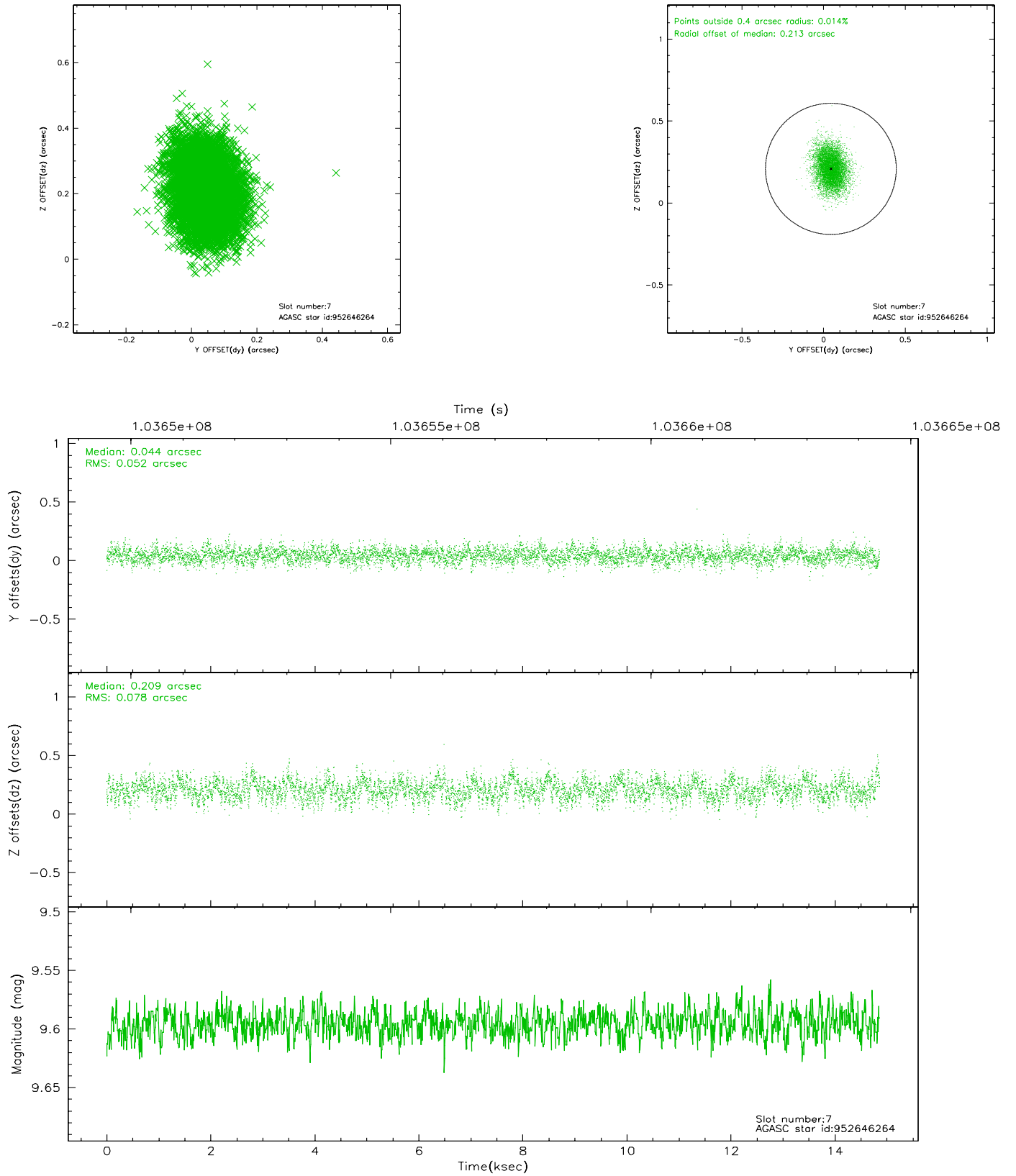
2.4.3 Slot 5



2.4.4 Slot 6

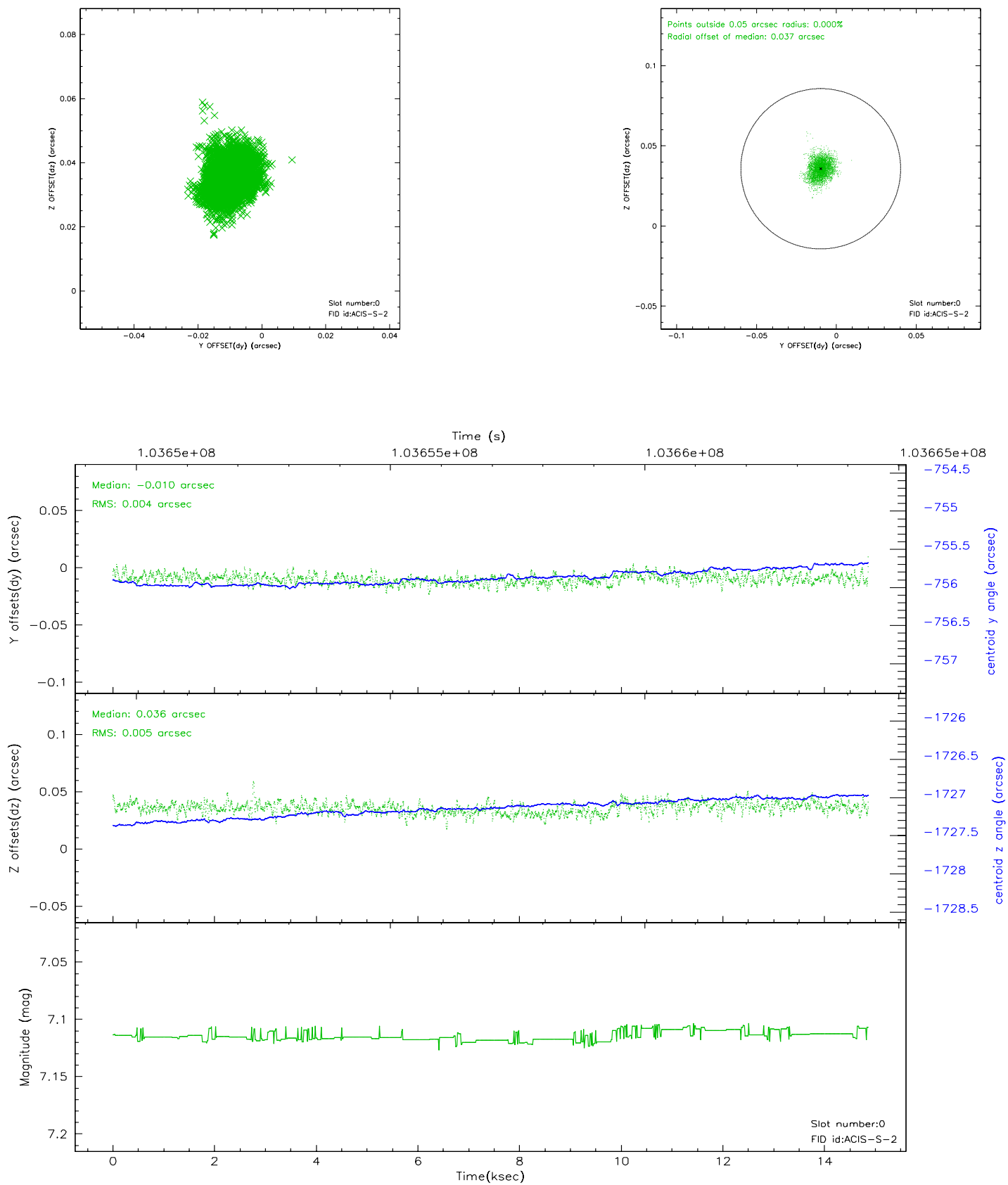


2.4.5 Slot 7

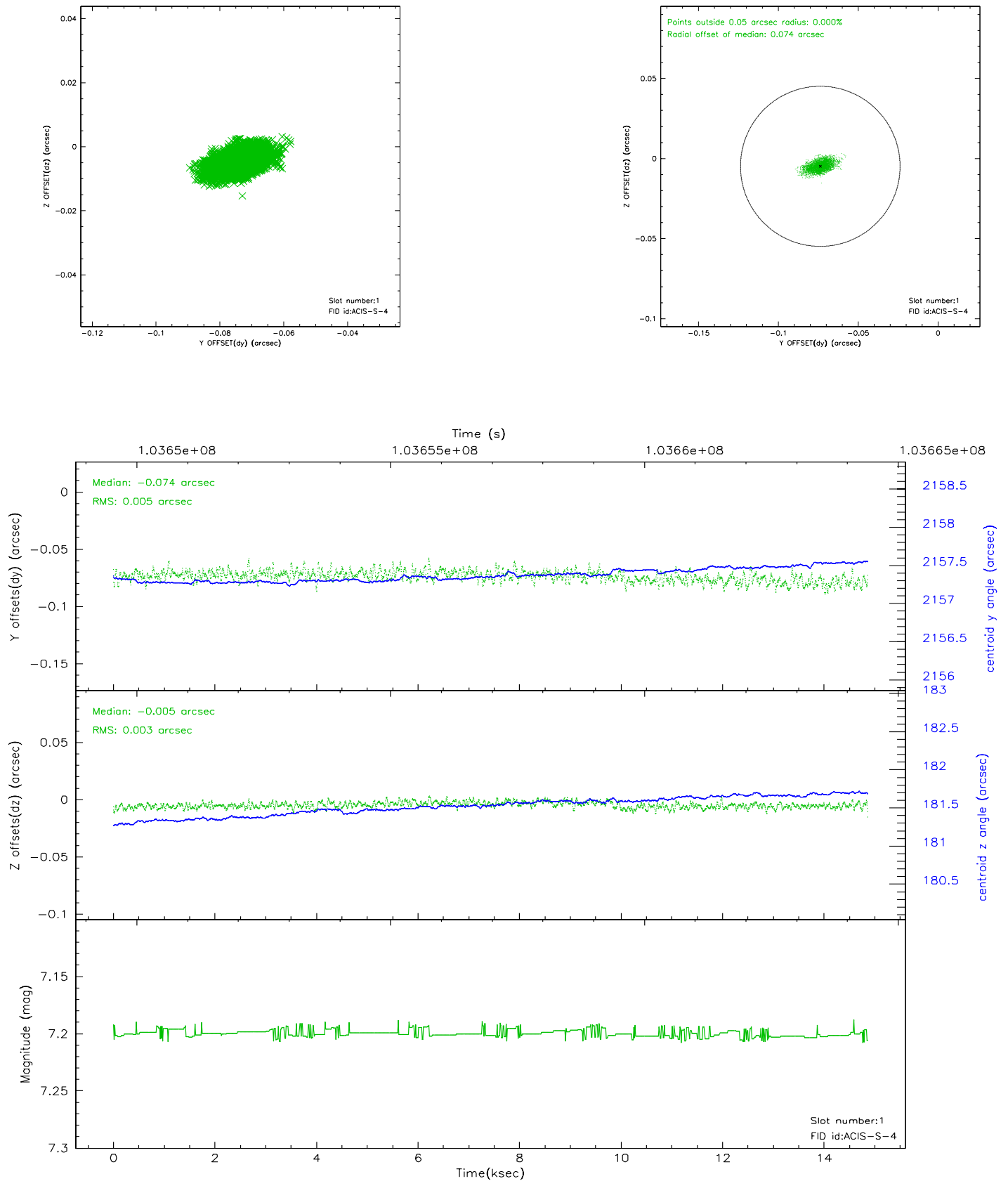


2.5 FID Slots

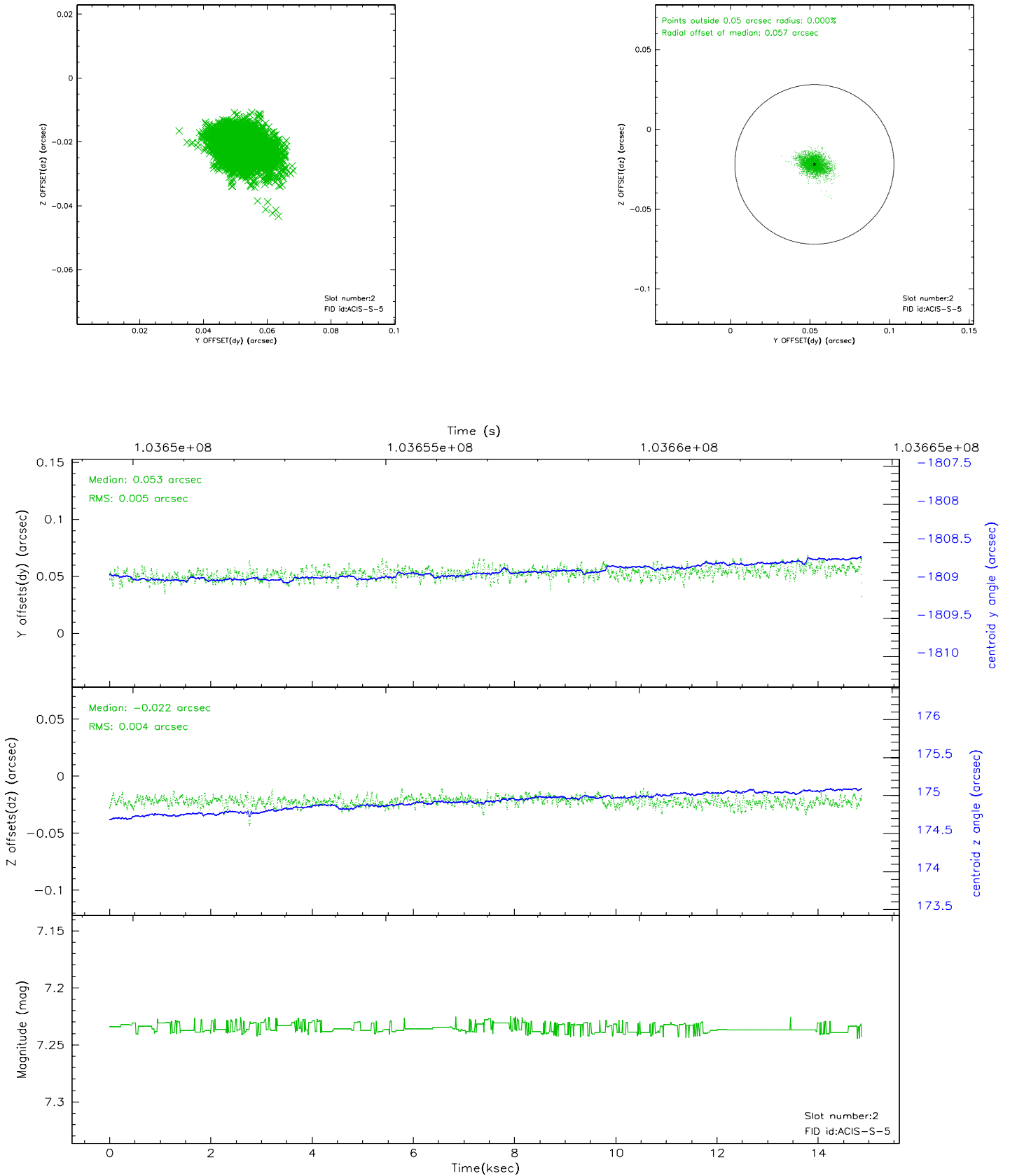
2.5.1 Slot 0



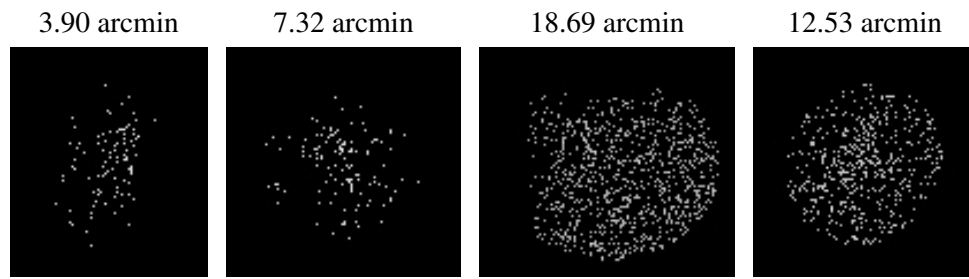
2.5.2 Slot 1



2.5.3 Slot 2



3 Point Sources



A Summary

A.1 Status

V&V Scientist	Beth Sundheim
V&V Date (YYYY-MM-DD)	2006.11.14
V&V Edition	1
V&V Disposition and Status	OK
V&V Charge Time	14.61

A.2 Comments