

V&V Reference Report

L2 ASCDS Version : 8.4.5

Observation 1586 - L2 Version 3
Chandra X-Ray Center

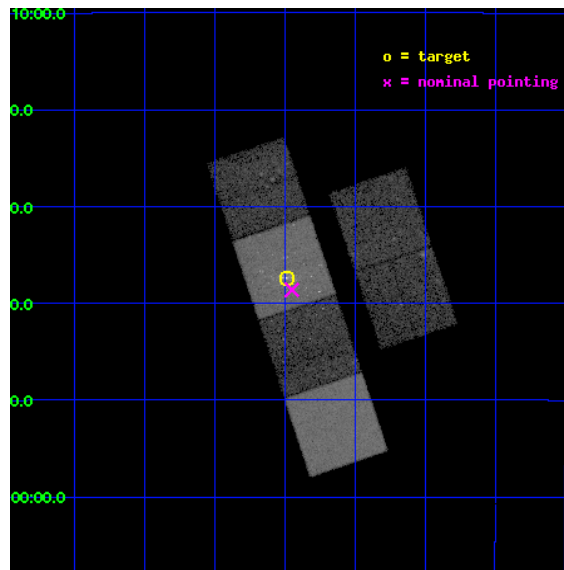
L2 Processing Date : Sep 17 2012

Contents

1	Front	2
2	OBI	3
2.1	OBI	3
2.1.1	Images	3
2.1.2	Bias	3
2.1.3	Parameters	4
2.1.4	Events	4
2.2	Compared Parameters	5
2.3	Aspect	6
2.4	Star Slots	9
2.4.1	Slot 3	9
2.4.2	Slot 4	10
2.4.3	Slot 5	11
2.4.4	Slot 6	12
2.4.5	Slot 7	13
2.5	FID Slots	14
2.5.1	Slot 0	14
2.5.2	Slot 1	15
2.5.3	Slot 2	16
A	Summary	17
A.1	Status	17
A.2	Comments	17

1 Front

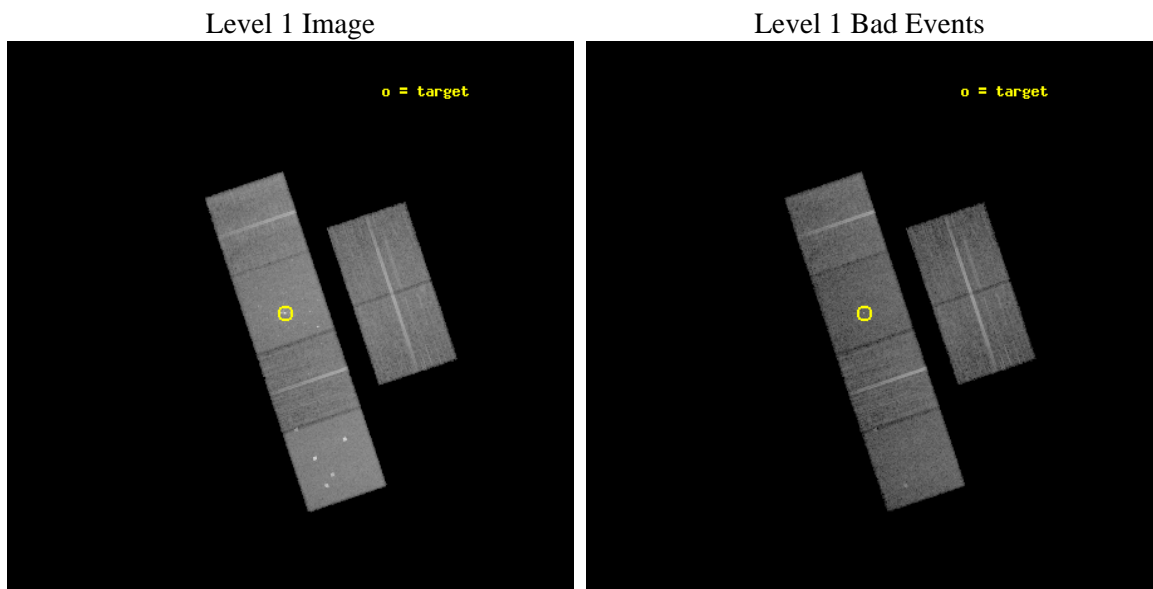
seq_num	600143	Sequence number
obs_id	1586	Observation id
title	CHANDRA OBSERVATIONS OF THE ELLIPTICAL GALAXY NGC4594	Proposal tit
observer	Dr. Stephen Murray	Principal investigator
object	NGC4594	Source name
dtcycle	0	
cycle	P	events from which exps? Prim/Second/Both
ra_targ	189.995833	Observer's specified target RA [deg]
dec_targ	-11.624444	Observer's specified target Dec [deg]
ra_nom	189.98737261068	Nominal RA [deg]
dec_nom	-11.643607046985	Nominal Dec [deg]
roll_nom	251.47992453361	Nominal Roll [deg]
revision	3	Processing version of data
ontime	18752.000017449	Sum of GTIs [s]
livetime	18514.550902129	Livetime [s]
ontime2	18752.000017449	Sum of GTIs [s]
ontime3	18752.000017449	Sum of GTIs [s]
ontime5	18752.000017449	Sum of GTIs [s]
ontime6	18748.759057194	Sum of GTIs [s]
ontime7	18752.000017449	Sum of GTIs [s]
ontime8	18748.759176806	Sum of GTIs [s]
l2events	192174	Number of level 2 events



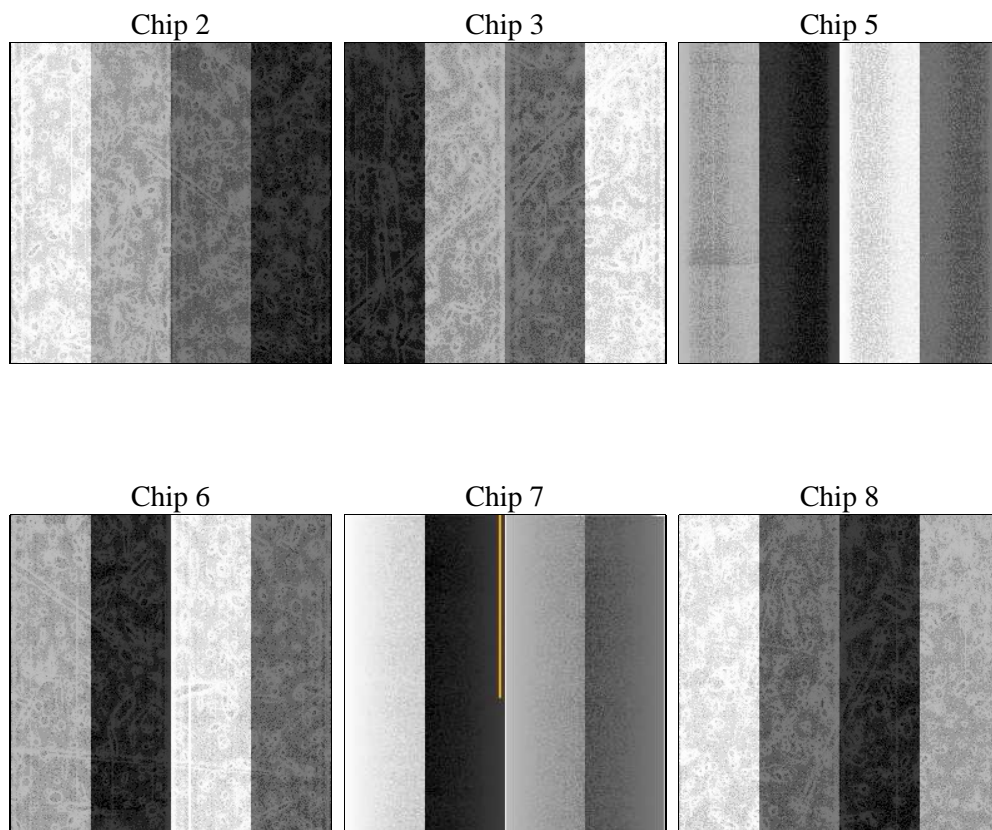
2 OBI

2.1 OBI

2.1.1 Images



2.1.2 Bias



2.1.3 Parameters

obi_num	0	Obi number	sched_exp_time	19000.000000	[s] Scheduled observation exposure time
ascdsver	8.4.5	Processing system revision	ontime	18752.000017449	Sum of GTIs [s]
caldsver	4.5.1.1	 	ontime2	18752.000017449	Sum of GTIs [s]
date	2012-09-17T01:46:43	Date and time of file creation	ontime3	18752.000017449	Sum of GTIs [s]
revision	3	Processing version of data	ontime5	18752.000017449	Sum of GTIs [s]
			ontime6	18748.759057194	Sum of GTIs [s]
			ontime7	18752.000017449	Sum of GTIs [s]
			ontime8	18748.759176806	Sum of GTIs [s]
			l1events	847515	Number of level 1 events

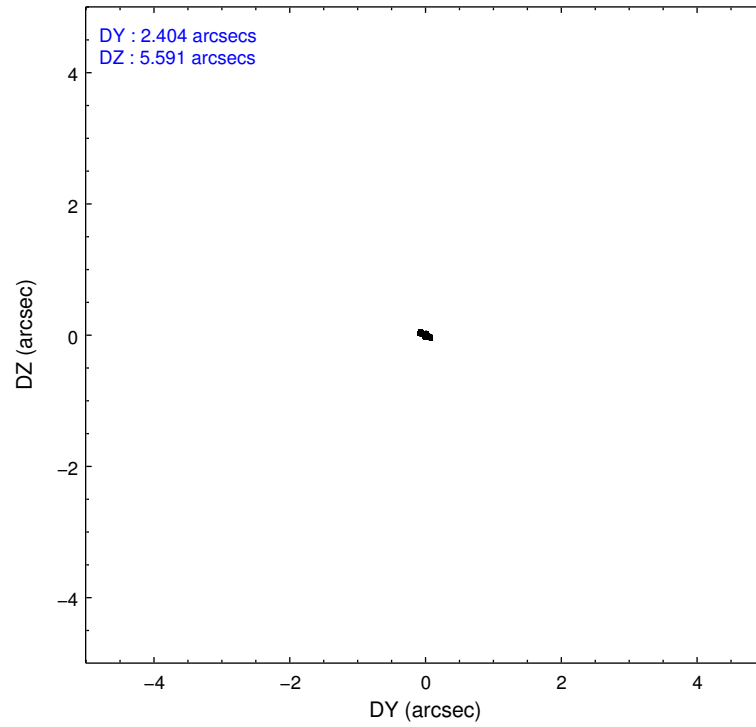
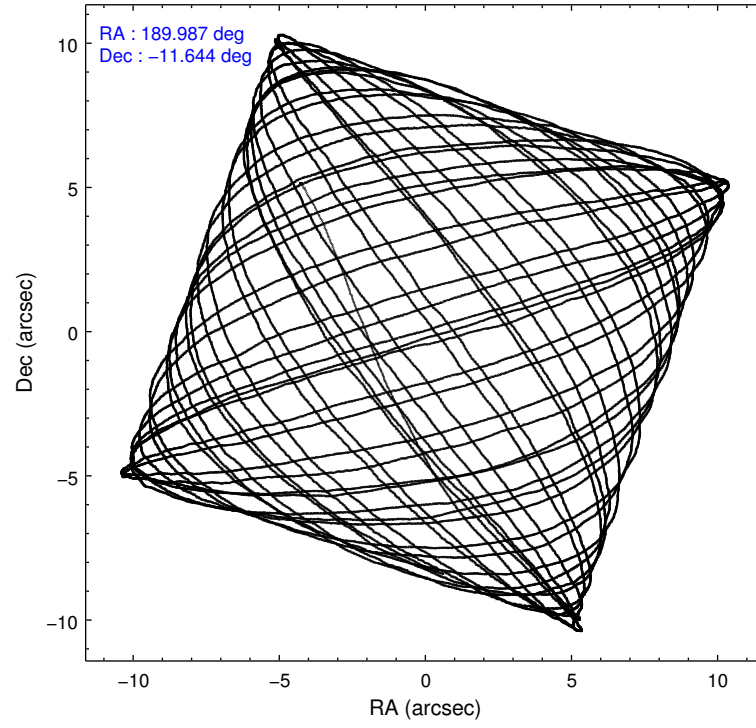
2.1.4 Events

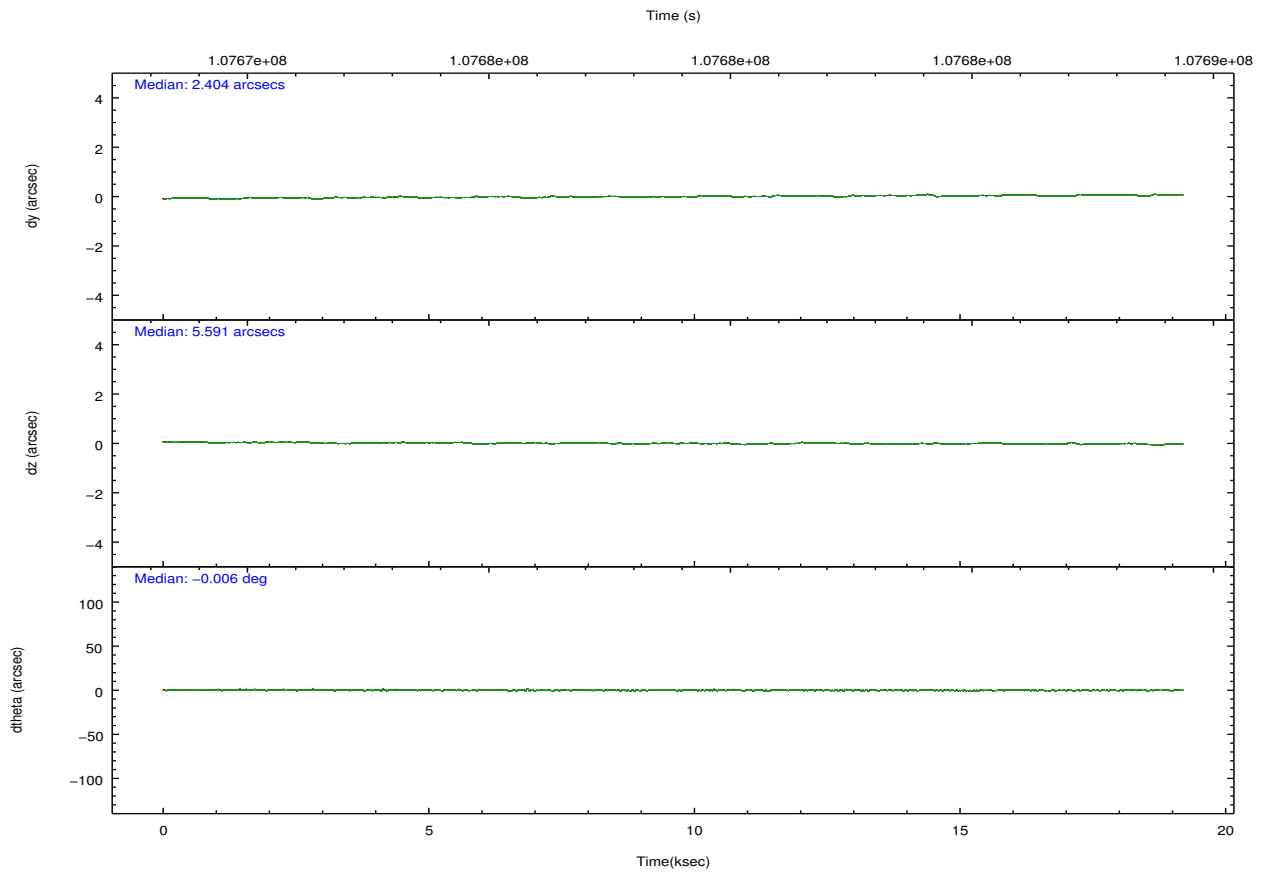
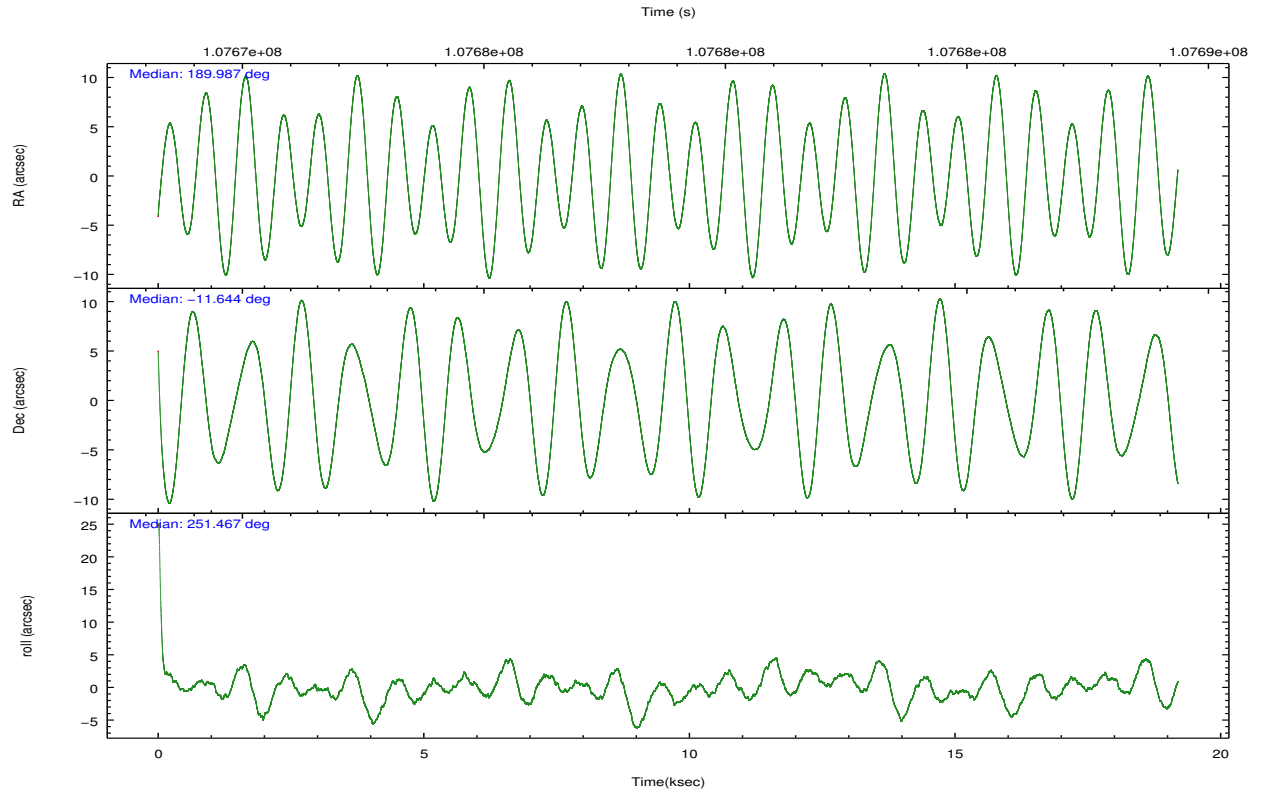
	ccd 2	ccd 3	ccd 5	ccd 6	ccd 7	ccd 8		ccd 2	ccd 3	ccd 5	ccd 6	ccd 7	ccd 8
level 1 events	121294	117132	175946	119373	164595	149175	grade 0 events	5627	5980	16437	6146	9834	9336
rejected events	108046	103485	90904	105012	90026	119801		4%	5%	9%	5%	5%	6%
rejected %	89%	88%	51%	87%	54%	80%	grade 1 events	53	45	284	53	209	92
								0%	0%	0%	0%	0%	0%
							grade 2 events	2894	2633	22547	2817	15423	6267
								2%	2%	12%	2%	9%	4%
							grade 3 events	1191	1337	3342	1429	7066	3229
								0%	1%	1%	1%	4%	2%
							grade 4 events	1208	1329	3011	1328	6887	3080
								0%	1%	1%	1%	4%	2%
							grade 5 events	4125	4626	12444	4851	14983	6158
								3%	3%	7%	4%	9%	4%
							grade 6 events	2335	2376	39732	2647	35378	7469
								1%	2%	22%	2%	21%	5%
							grade 7 events	103861	98806	78149	100102	74815	113544
								85%	84%	44%	83%	45%	76%

2.2 Compared Parameters

Parameter	Planned	Actual	Parameter	Planned	Actual
Instrument	ACIS	ACIS	Obspar format version number	7	7
Detector	ACIS-235678	ACIS-235678	Obspar file type	PREDICTED	ACTUAL
Grating	NONE	NONE	Obspar update status	NONE	UPDATED
Data mode	FAINT	FAINT	Number of optional ACIS chips dropped	0	0
Observation mode	POINTING	POINTING	On-chip summing requested	N	N
[deg] Pointing RA	189.981553	189.9873726106789	Subarray requested	NONE	NONE
[deg] Pointing Dec	-11.616908	-11.64360704698549	Alternating exposures requested	N	N
[deg] Pointing Roll	251.322104	251.4799245336063	[s] Primary exposure time	0.000000	3.2
[mm] SIM focus pos	-0.684267	-0.6828225247311905			
[mm] SIM defocus	0	0.001444936568705701			
[mm] SIM translation stage pos	-190.132523	-190.1400660498719			
[mm] SIM translation stage offset	0	0.00754346686406393			
[s] Observation start time (MET)	107669411.184000	107668691.3278			
Observation start date	2001-05-31T04:09:07	2001-05-31T03:58:11			
[s] Observation end time (MET)	107688411.184000	107688958.14109			
Observation end date	2001-05-31T09:25:47	2001-05-31T09:35:58			
Read mode	TIMED	TIMED			

2.3 Aspect



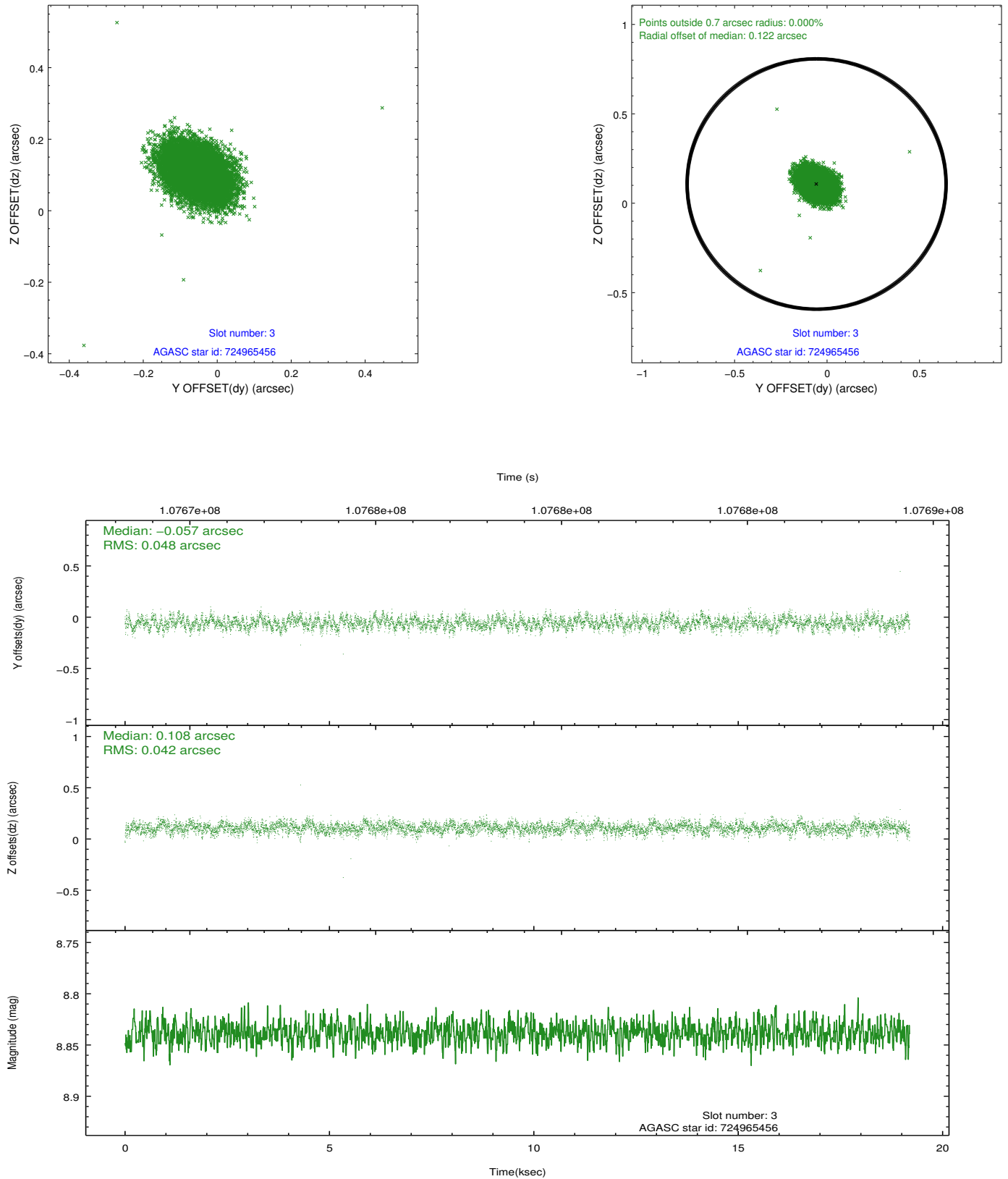


Slot Statistics

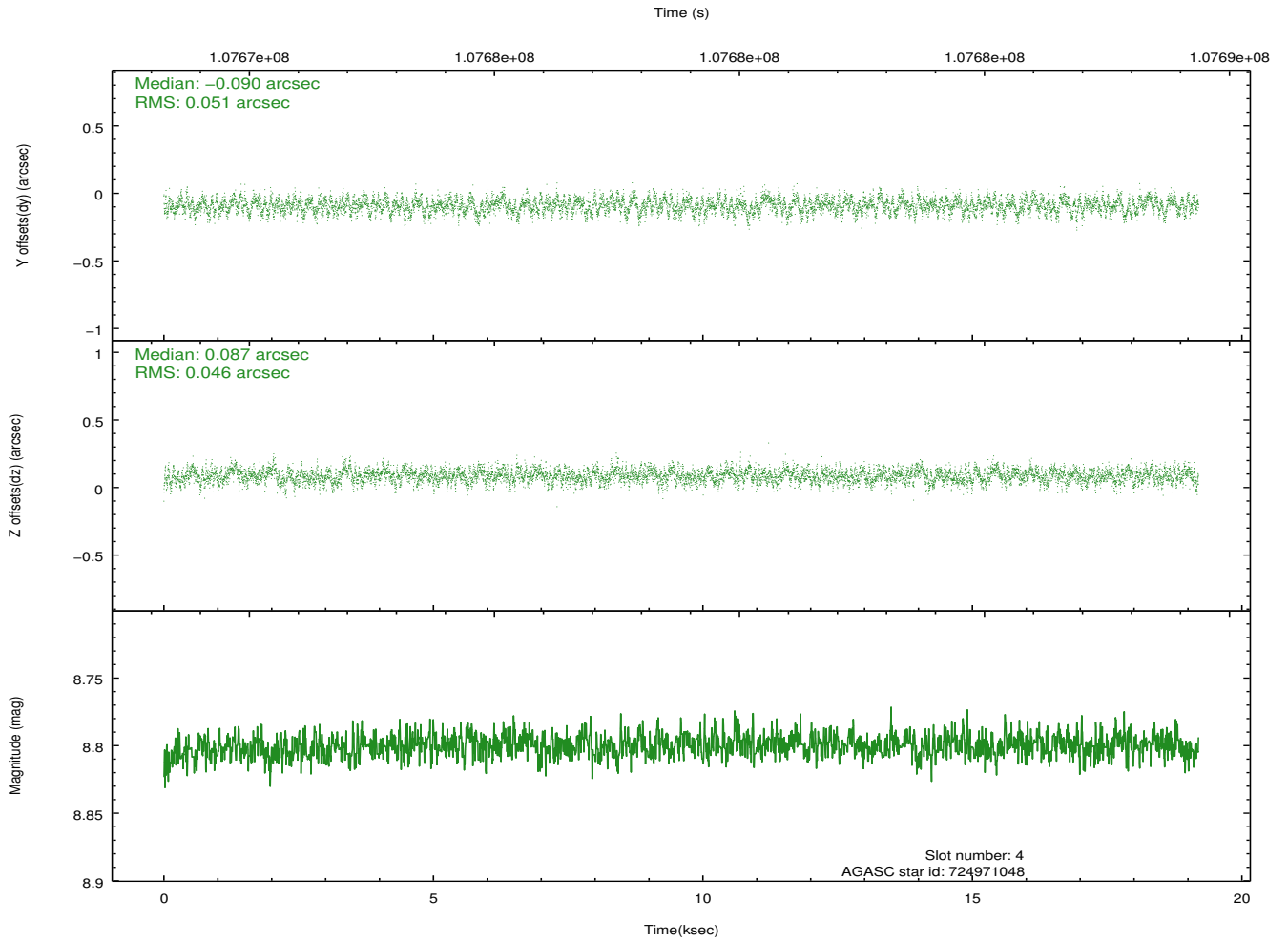
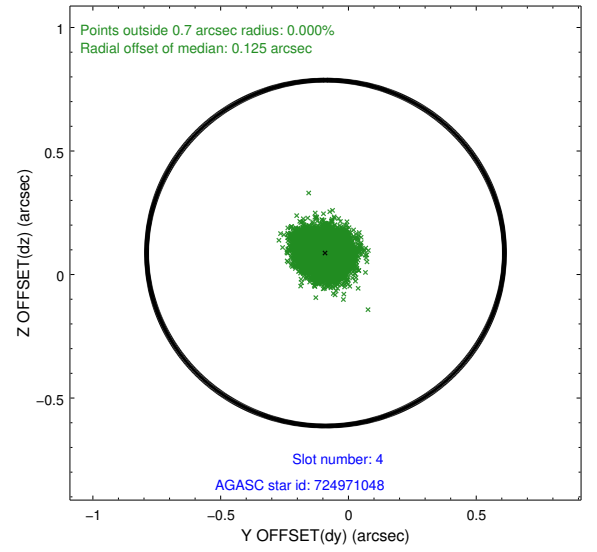
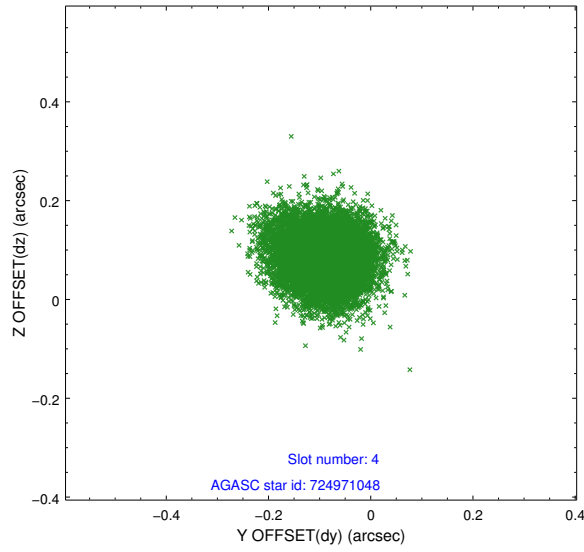
slot	status	id	mag	n_pts	med_dy	med_dz	dr1	dr2	ra	dec	mean_y	mean_z
0	FID	ACIS-S-2	7.11	4683	-0.039	-0.001	0.007	0.011	0.000000	0.000000	-755.02	-1726.74
1	FID	ACIS-S-4	7.20	4683	-0.023	0.019	0.005	0.010	0.000000	0.000000	2158.13	181.63
2	FID	ACIS-S-5	7.24	4683	0.031	-0.009	0.006	0.011	0.000000	0.000000	-1807.58	175.40
3	GUIDE	724965456	8.84	9364	-0.057	0.108	0.067	0.110	190.440222	-11.591595	-603.90	1504.85
4	GUIDE	724971048	8.80	9360	-0.090	0.087	0.074	0.117	190.547082	-11.185183	-2110.95	1396.09
5	GUIDE	724969824	9.11	9350	0.043	-0.057	0.070	0.115	189.639630	-11.538037	117.64	-1231.86
6	GUIDE	724961848	9.32	9364	0.097	-0.034	0.084	0.137	190.046652	-11.830135	653.31	464.09
7	GUIDE	724959992	9.54	9358	0.005	-0.104	0.102	0.166	189.551265	-11.351404	-417.94	-1743.36

2.4 Star Slots

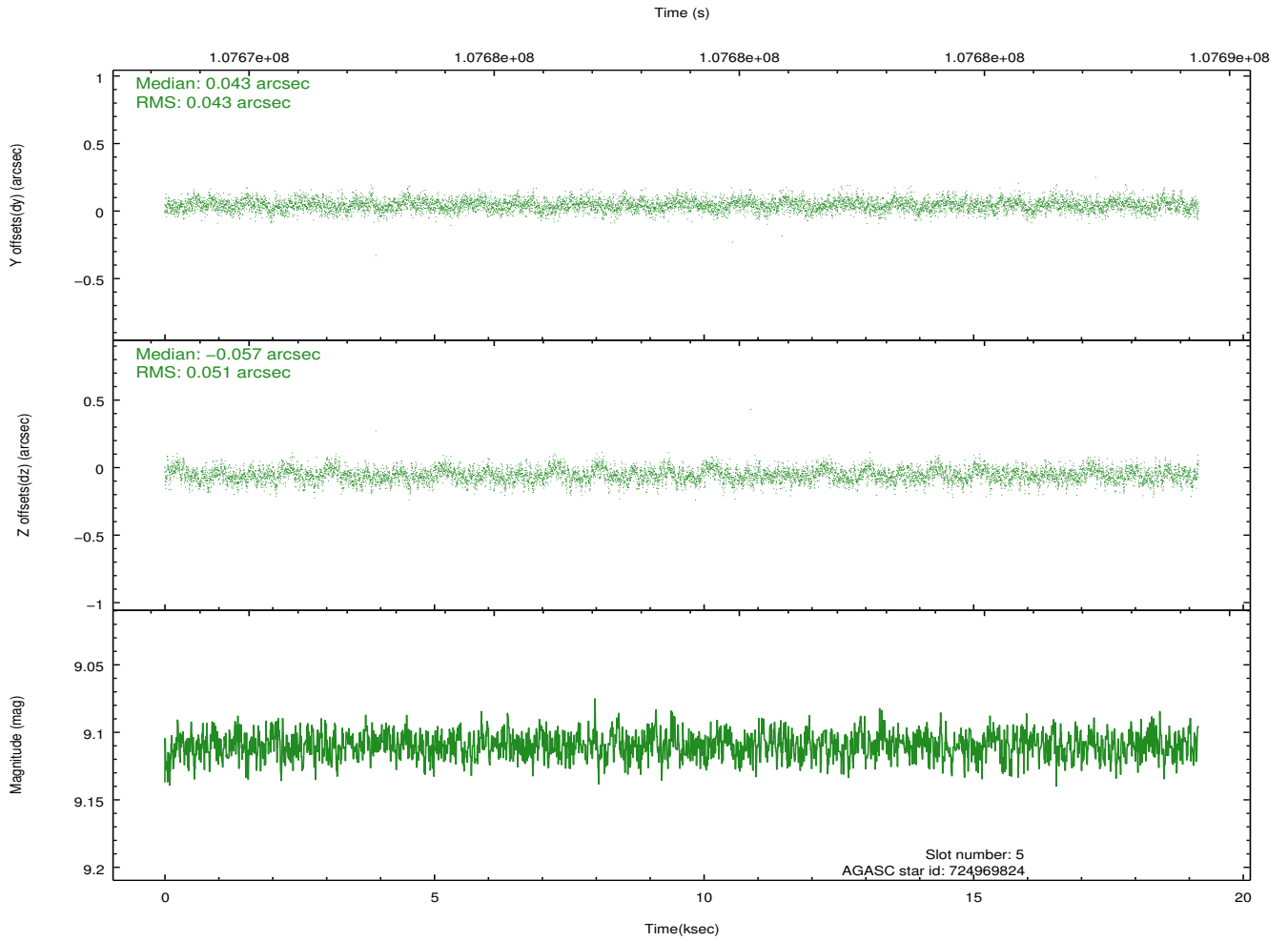
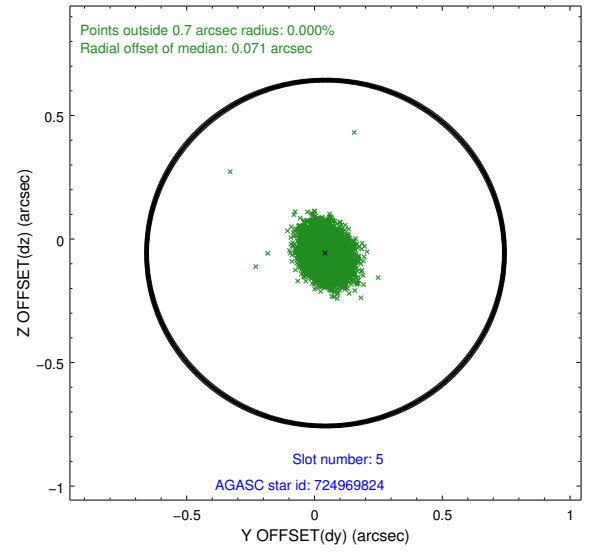
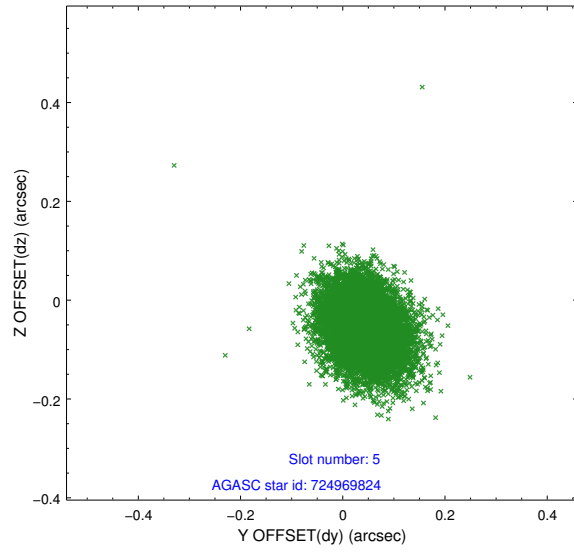
2.4.1 Slot 3



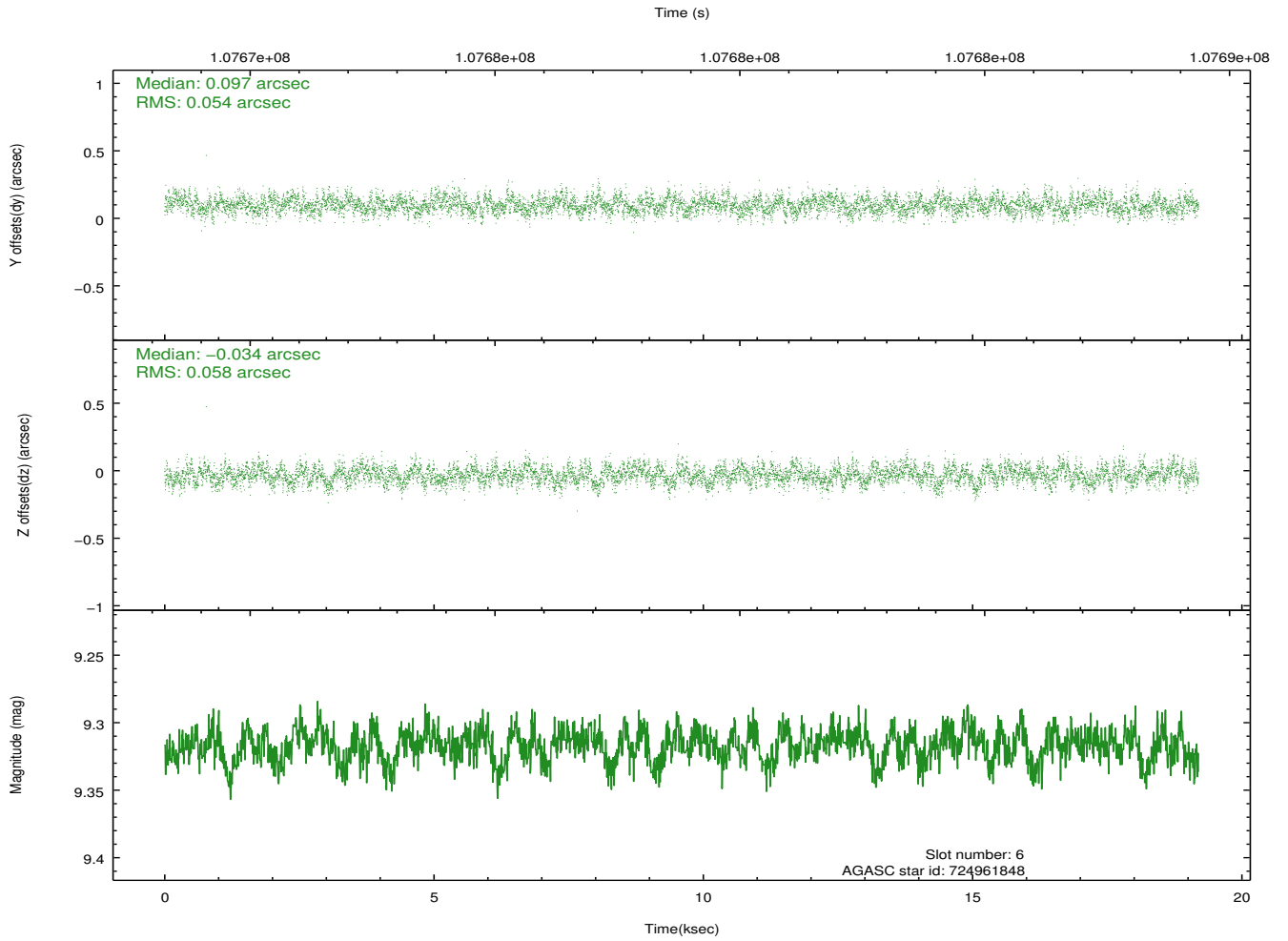
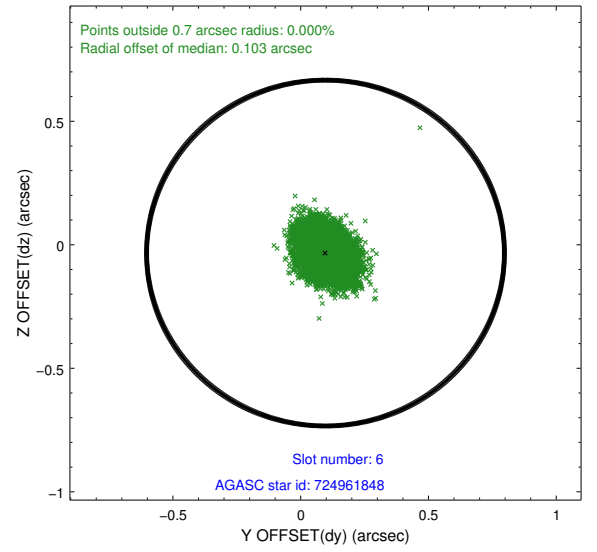
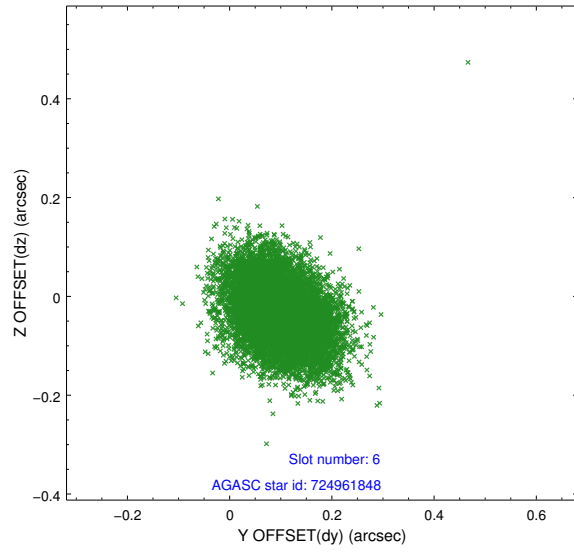
2.4.2 Slot 4



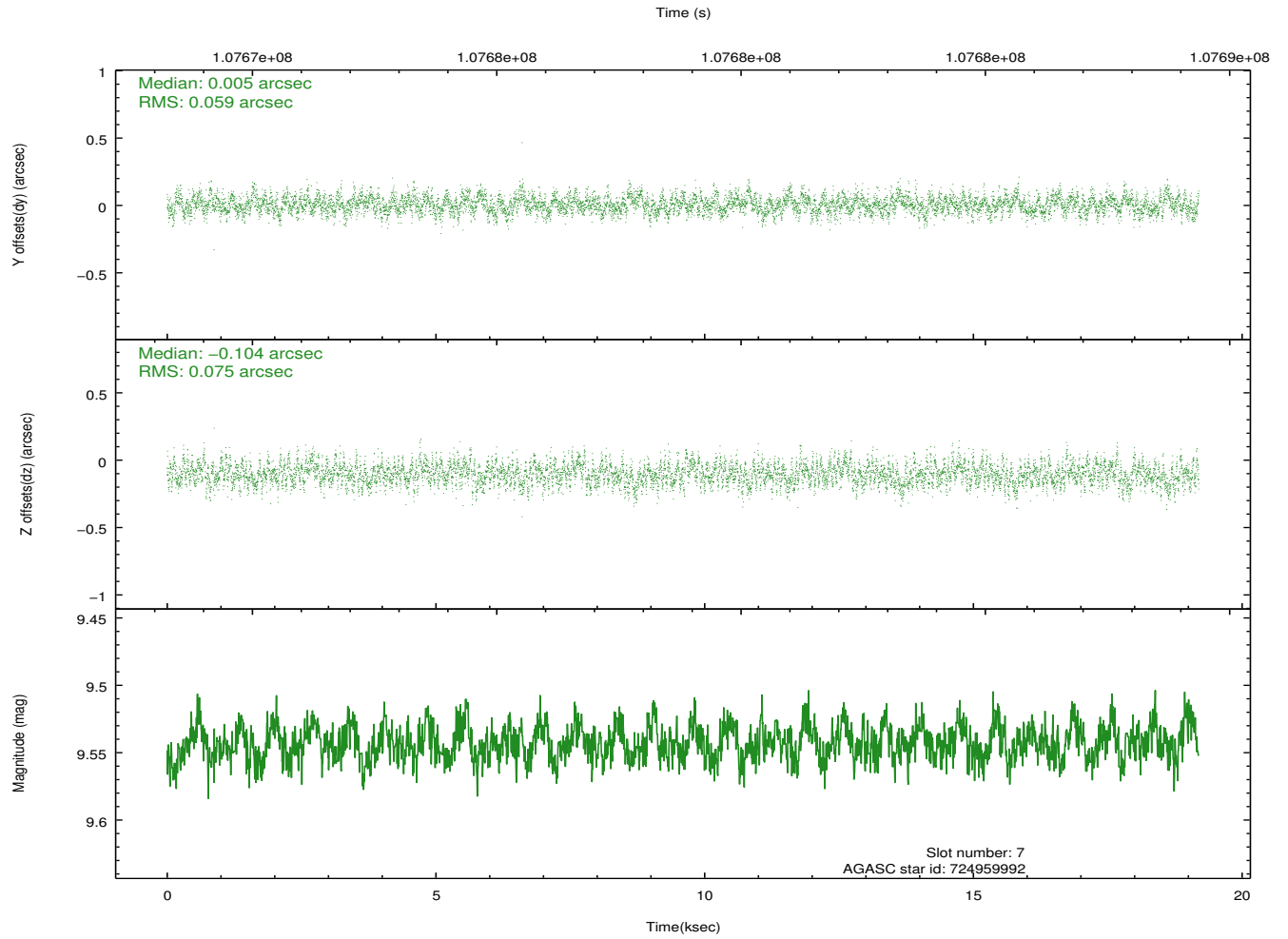
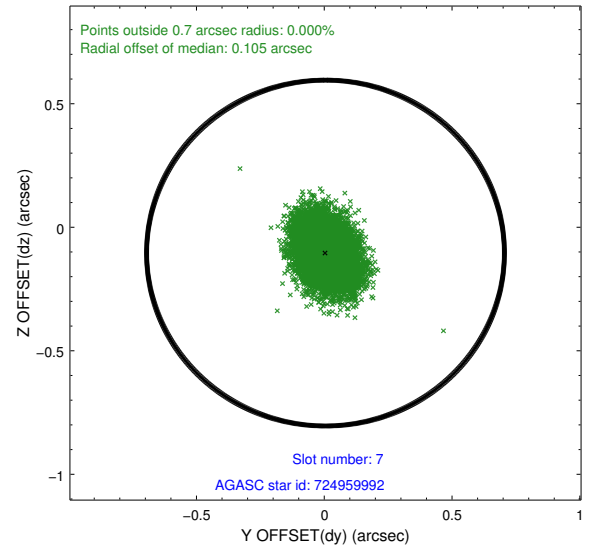
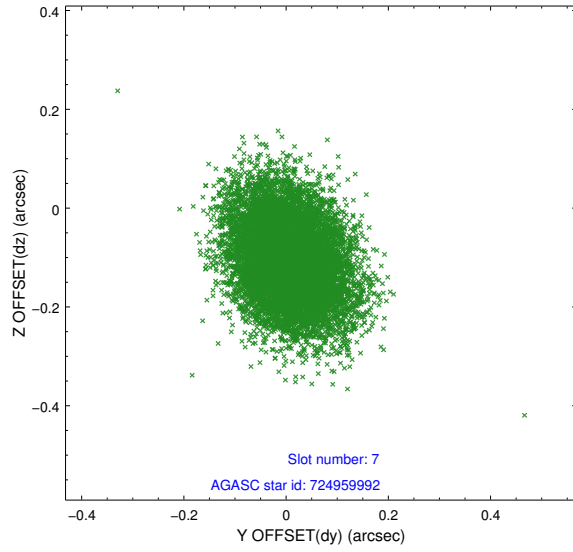
2.4.3 Slot 5



2.4.4 Slot 6

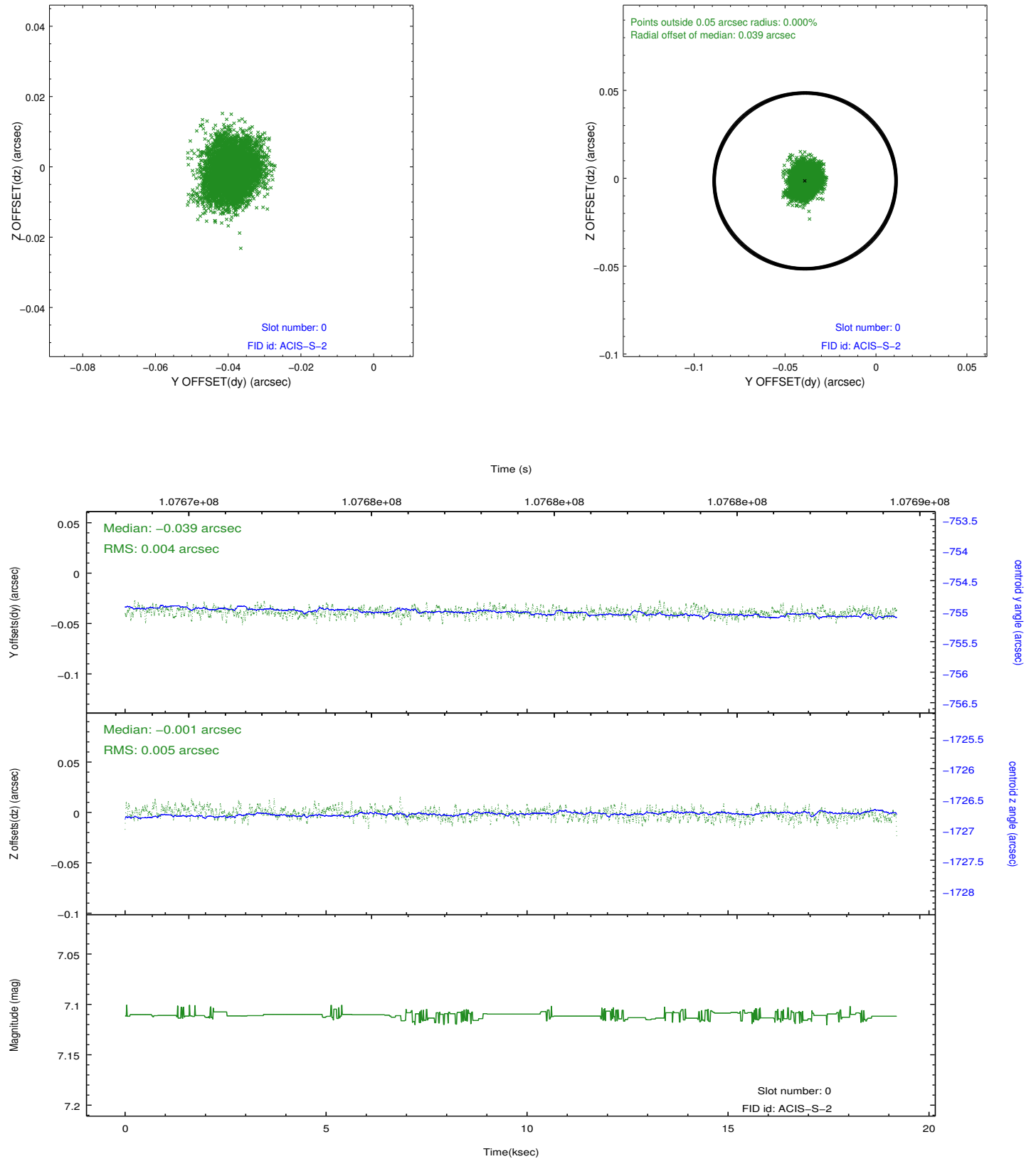


2.4.5 Slot 7

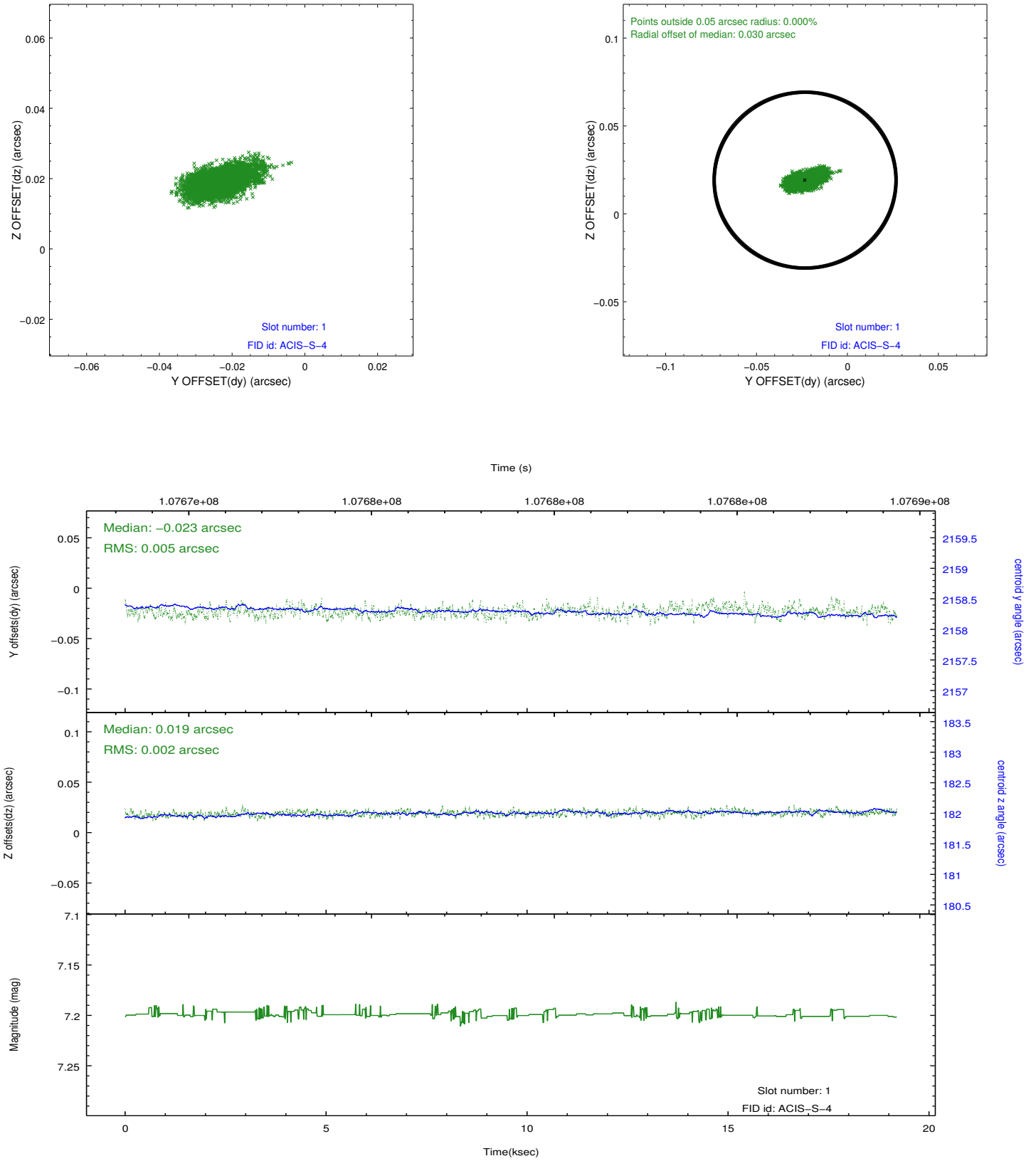


2.5 FID Slots

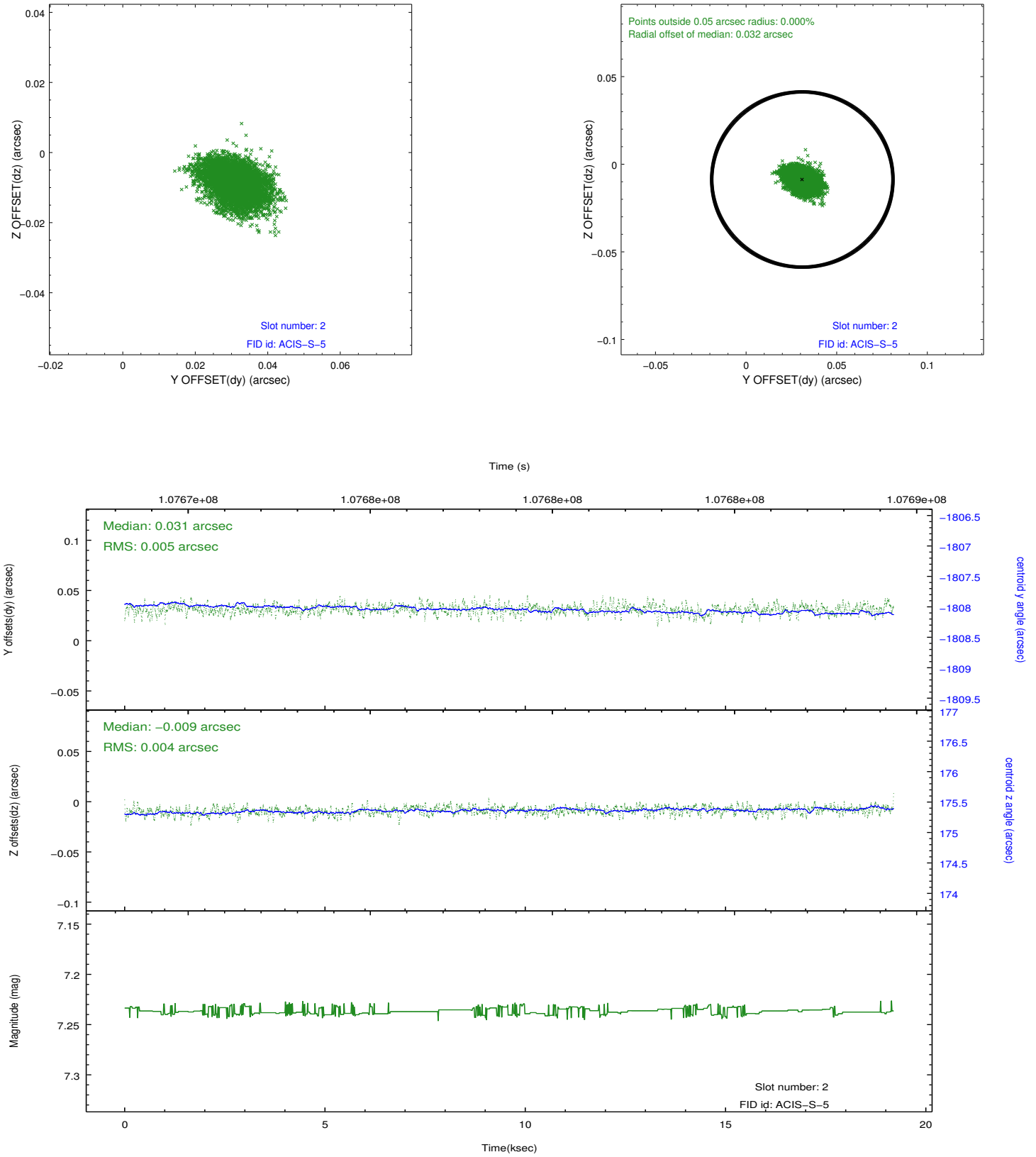
2.5.1 Slot 0



2.5.2 Slot 1



2.5.3 Slot 2



A Summary

A.1 Status

V&V Scientist	Jen Lauer
V&V Date (YYYY-MM-DD)	2012.09.19
V&V Edition	1
V&V Disposition and Status	OK
V&V Charge Time	18.755

A.2 Comments