

V&V Reference Report

L2 ASCDS Version : 8.4.5

Observation 13766 - L2 Version 2
Chandra X-Ray Center

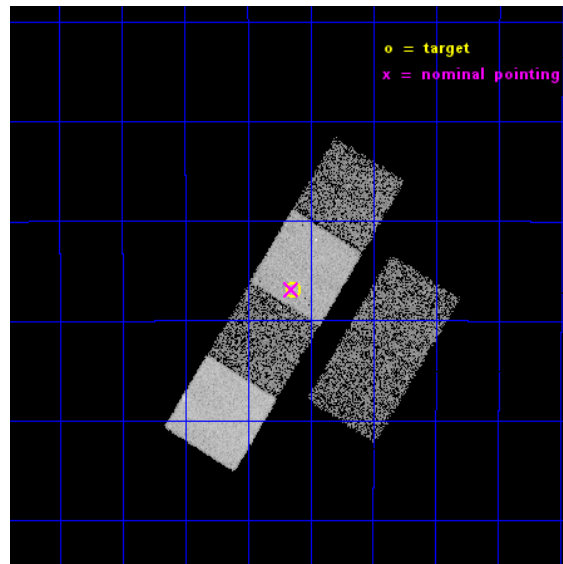
L2 Processing Date : Nov 28 2014

Contents

1	Front	2
2	OBI	3
2.1	OBI	3
2.1.1	Images	3
2.1.2	Bias	3
2.1.3	Parameters	4
2.1.4	Events	4
2.2	Compared Parameters	5
2.3	Aspect	6
2.4	Star Slots	9
2.4.1	Slot 3	9
2.4.2	Slot 4	10
2.4.3	Slot 5	11
2.4.4	Slot 6	12
2.4.5	Slot 7	13
2.5	FID Slots	14
2.5.1	Slot 0	14
2.5.2	Slot 1	15
2.5.3	Slot 2	16
A	Summary	17
A.1	Status	17
A.2	Comments	17

1 Front

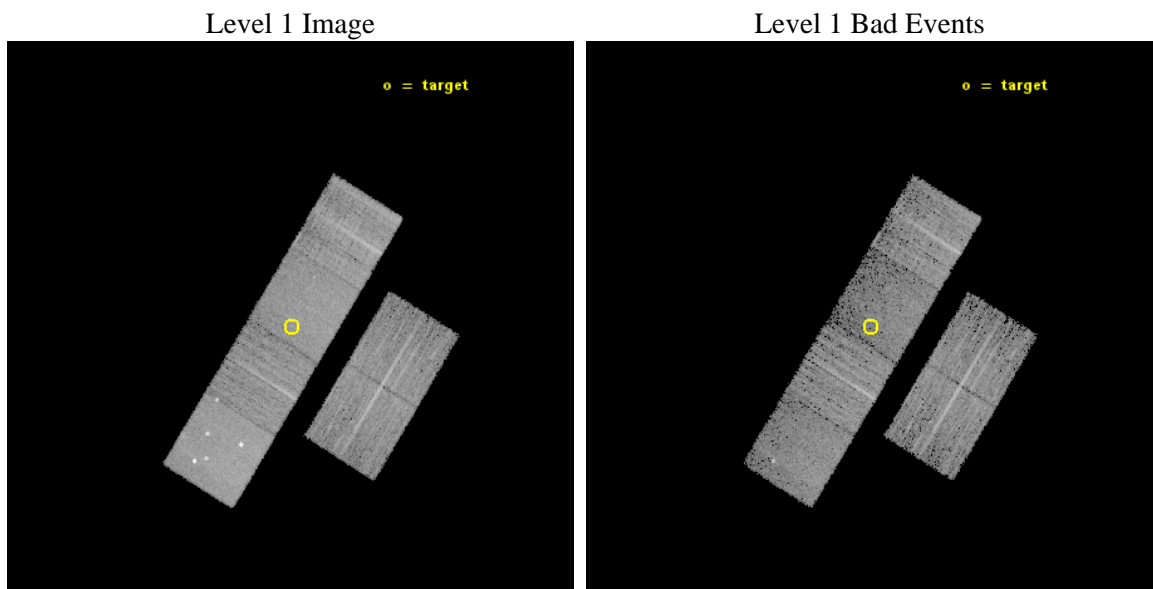
seq_num	501599	Sequence number
obs_id	13766	Observation id
title	Chandra Observations of New X-ray Supernovae	Proposal title
observer	Prof. David Pooley	Principal investigator
object	SN 2009ip	Source name
dtcycle	0	
cycle	P	events from which exps? Prim/Second/Both
ra_targ	335.784417	Observer's specified target RA [deg]
dec_targ	-28.947889	Observer's specified target Dec [deg]
ra_nom	335.78794519336	Nominal RA [deg]
dec_nom	-28.947929579524	Nominal Dec [deg]
roll_nom	301.44509762669	Nominal Roll [deg]
revision	2	Processing version of data
ontime	9958.3999629617	Sum of GTIs [s]
livetime	9832.3007064021	Livetime [s]
ontime2	9958.3999629617	Sum of GTIs [s]
ontime3	9958.3999629617	Sum of GTIs [s]
ontime5	9958.3999629617	Sum of GTIs [s]
ontime6	9958.3999629617	Sum of GTIs [s]
ontime7	9958.3999629617	Sum of GTIs [s]
ontime8	9958.3999629617	Sum of GTIs [s]
l2events	80398	Number of level 2 events



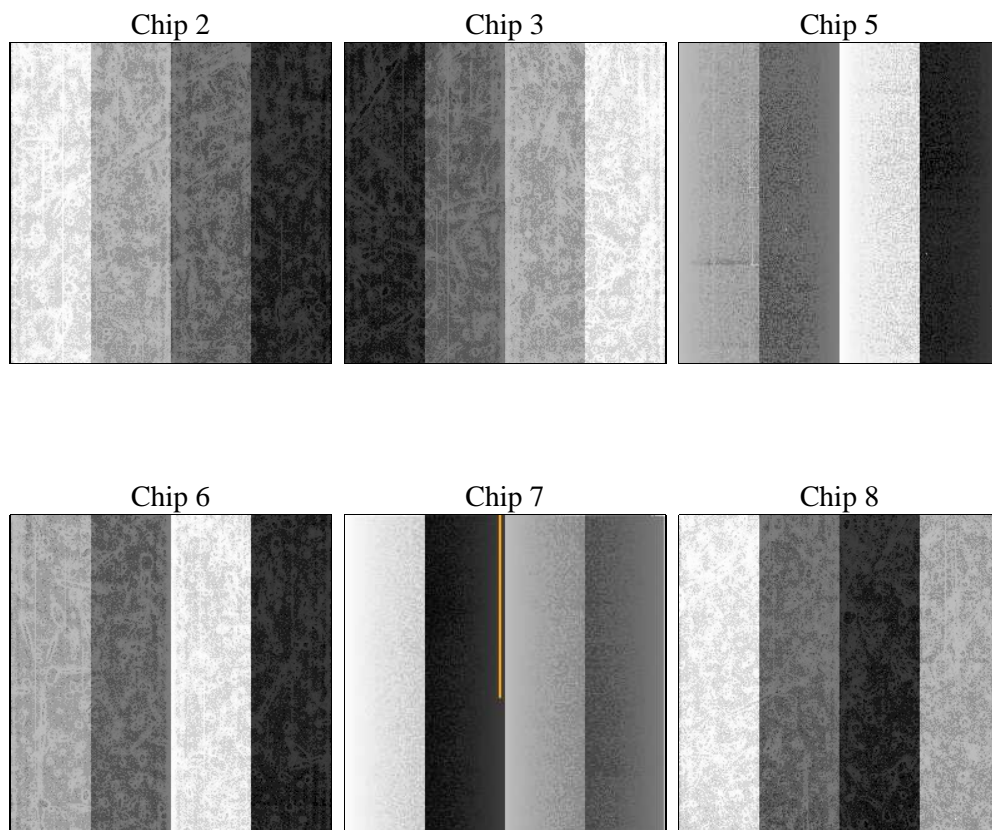
2 OBI

2.1 OBI

2.1.1 Images



2.1.2 Bias



2.1.3 Parameters

obi_num	0	Obi number	sched_exp_time	10000.000000	[s] Scheduled observation exposure time
ascdsver	10.3	Processing system revision	ontime	9958.3999629617	Sum of GTIs [s]
caldbver	4.6.4	 	ontime2	9958.3999629617	Sum of GTIs [s]
date	2014-11-28T19:00:46	Date and time of file creation	ontime3	9958.3999629617	Sum of GTIs [s]
revision	2	Processing version of data	ontime5	9958.3999629617	Sum of GTIs [s]
			ontime6	9958.3999629617	Sum of GTIs [s]
			ontime7	9958.3999629617	Sum of GTIs [s]
			ontime8	9958.3999629617	Sum of GTIs [s]
			l1events	341571	Number of level 1 events

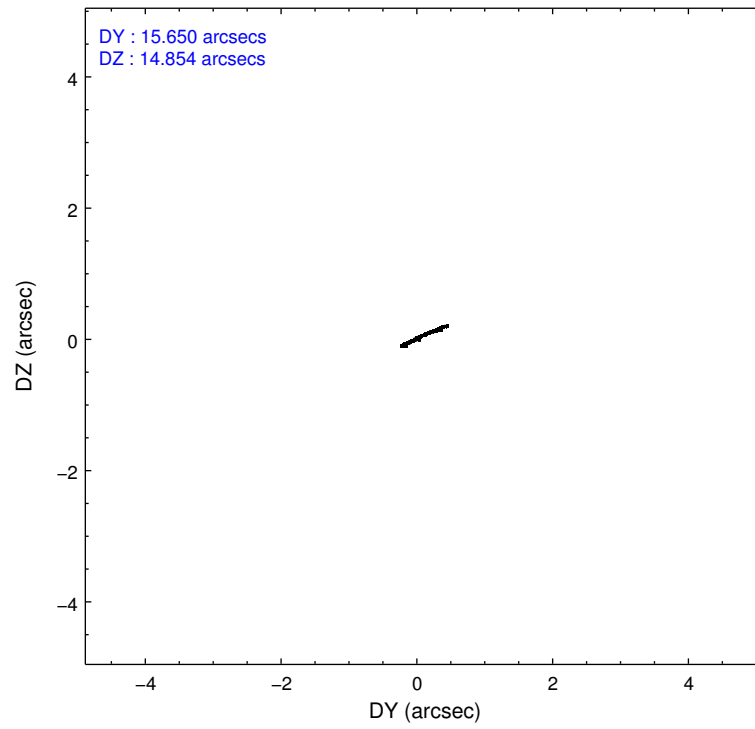
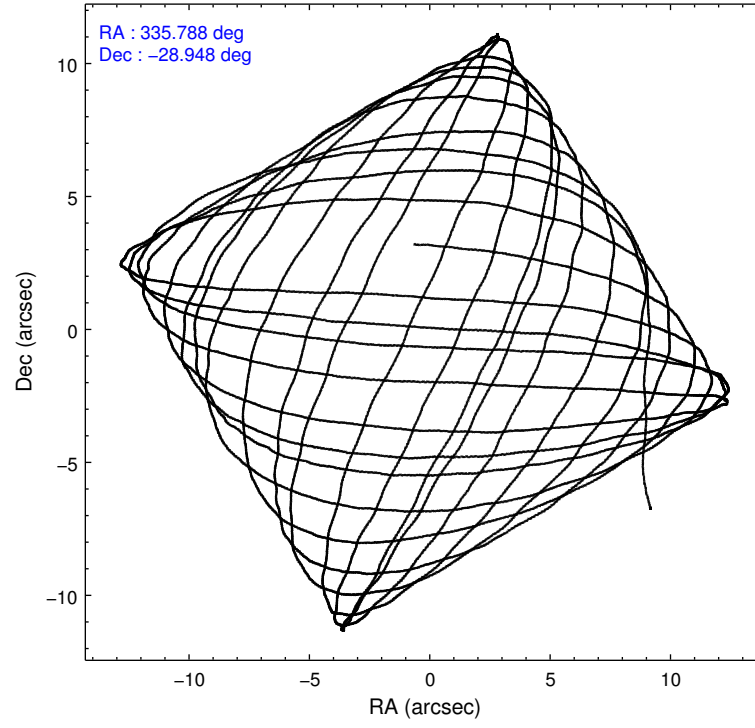
2.1.4 Events

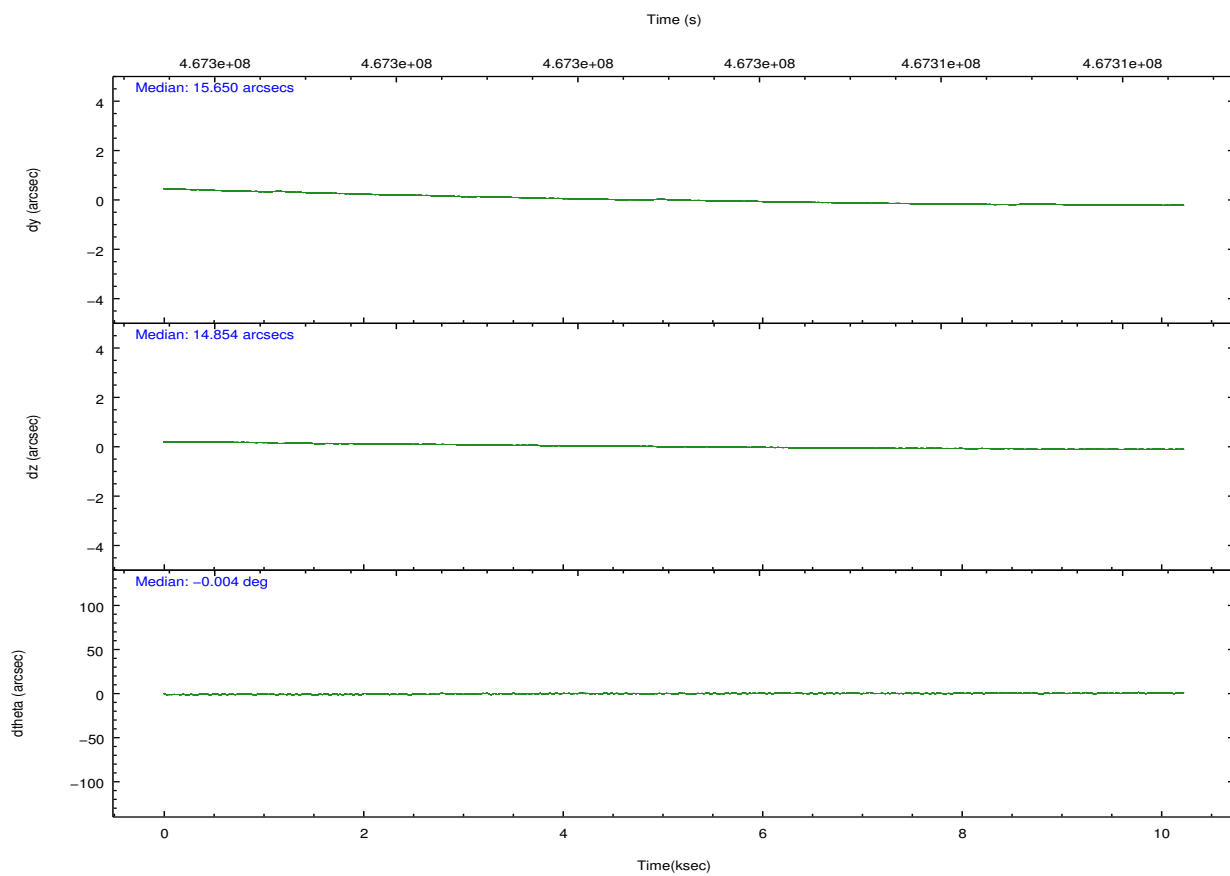
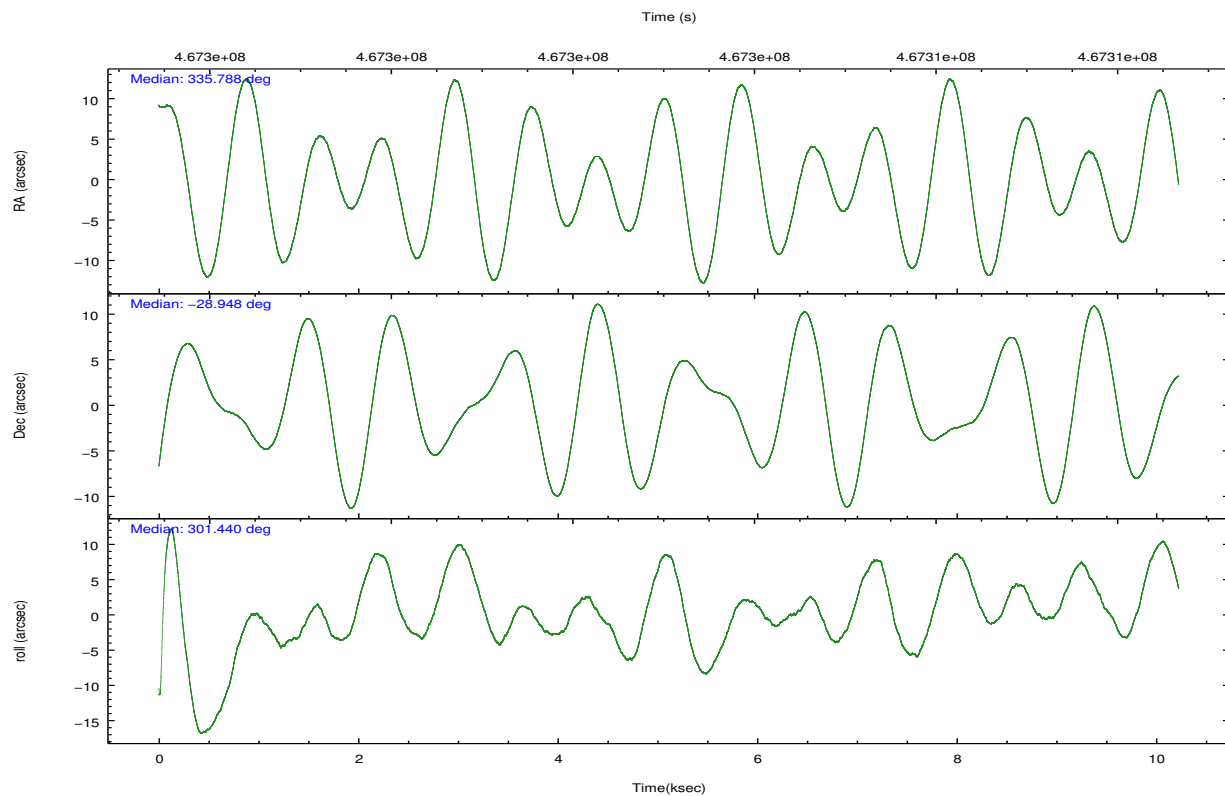
	ccd 2	ccd 3	ccd 5	ccd 6	ccd 7	ccd 8		ccd 2	ccd 3	ccd 5	ccd 6	ccd 7	ccd 8
level 1 events	47816	44850	79633	50105	57012	62155	grade 0 events	1881	1948	8983	2108	2689	4530
rejected events	42546	39686	35985	44285	30090	45729		3%	4%	11%	4%	4%	7%
rejected %	88%	88%	45%	88%	52%	73%	grade 1 events	27	21	377	23	85	46
								0%	0%	0%	0%	0%	0%
							grade 2 events	1258	1107	12491	1310	5609	4033
								2%	2%	15%	2%	9%	6%
							grade 3 events	561	537	1396	616	2280	1820
								1%	1%	1%	1%	3%	2%
							grade 4 events	566	584	1296	548	2291	1737
								1%	1%	1%	1%	4%	2%
							grade 5 events	1853	2273	5397	2151	6023	3312
								3%	5%	6%	4%	10%	5%
							grade 6 events	1010	992	19512	1240	14066	4319
								2%	2%	24%	2%	24%	6%
							grade 7 events	40660	37388	30181	42109	23969	42358
								85%	83%	37%	84%	42%	68%

2.2 Compared Parameters

Parameter	Planned	Actual	Parameter	Planned	Actual
Instrument	ACIS	ACIS	Obspar format version number	7	7
Detector	ACIS-235678	ACIS-235678	Obspar file type	PREDICTED	ACTUAL
Grating	NONE	NONE	Obspar update status	NONE	UPDATED
Data mode	FAINT	FAINT	CCD I0 on	N	N
Observation mode	POINTING	POINTING	CCD I1 on	N	N
[deg] Pointing RA	335.760227	335.787945193364	CCD I2 on	O1	Y
[deg] Pointing Dec	-28.935202	-28.94792957952389	CCD I3 on	O2	Y
[deg] Pointing Roll	301.275080	301.4450976266877	CCD S0 on	N	N
[mm] SIM focus pos	-0.684267	-0.6828225247311905	CCD S1 on	Y	Y
[mm] SIM defocus	0	0.001444936568705701	CCD S2 on	Y	Y
[mm] SIM translation stage pos	-190.132523	-190.1400660498719	CCD S3 on	Y	Y
[mm] SIM translation stage offset	0	0.00754346686406393	CCD S4 on	Y	Y
[s] Observation start time (MET)	467298172.184000	467297189.85131	CCD S5 on	N	N
Observation start date	2012-10-22T13:01:45	2012-10-22T12:46:29	Number of optional ACIS chips dropped	0	0
[s] Observation end time (MET)	467308172.184000	467308915.33944	On-chip summing requested	N	N
Observation end date	2012-10-22T15:48:25	2012-10-22T16:01:55	Subarray requested	NONE	NONE
Read mode	TIMED	TIMED	Alternating exposures requested	N	N
			[s] Primary exposure time	0.000000	3.2

2.3 Aspect



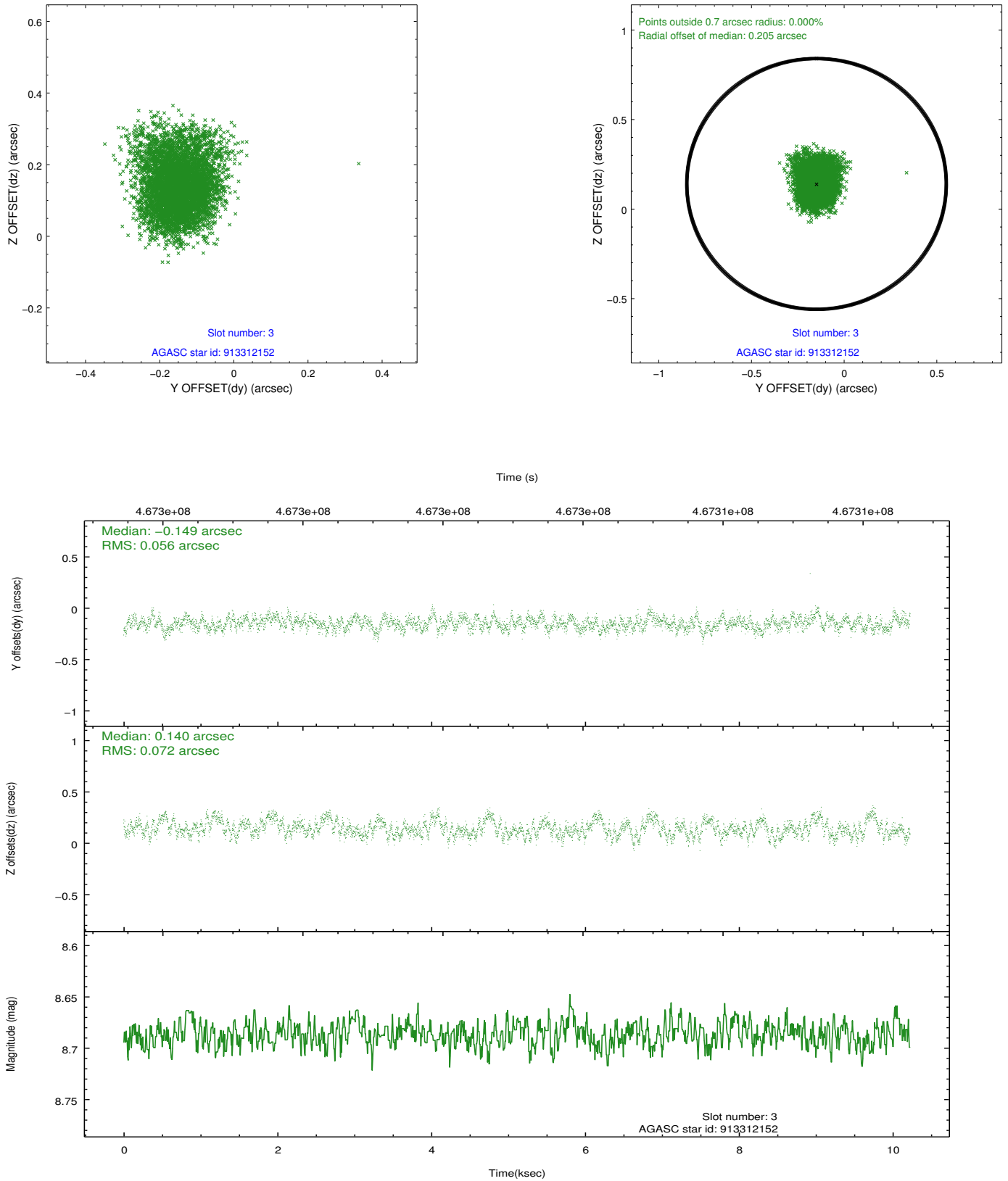


Slot Statistics

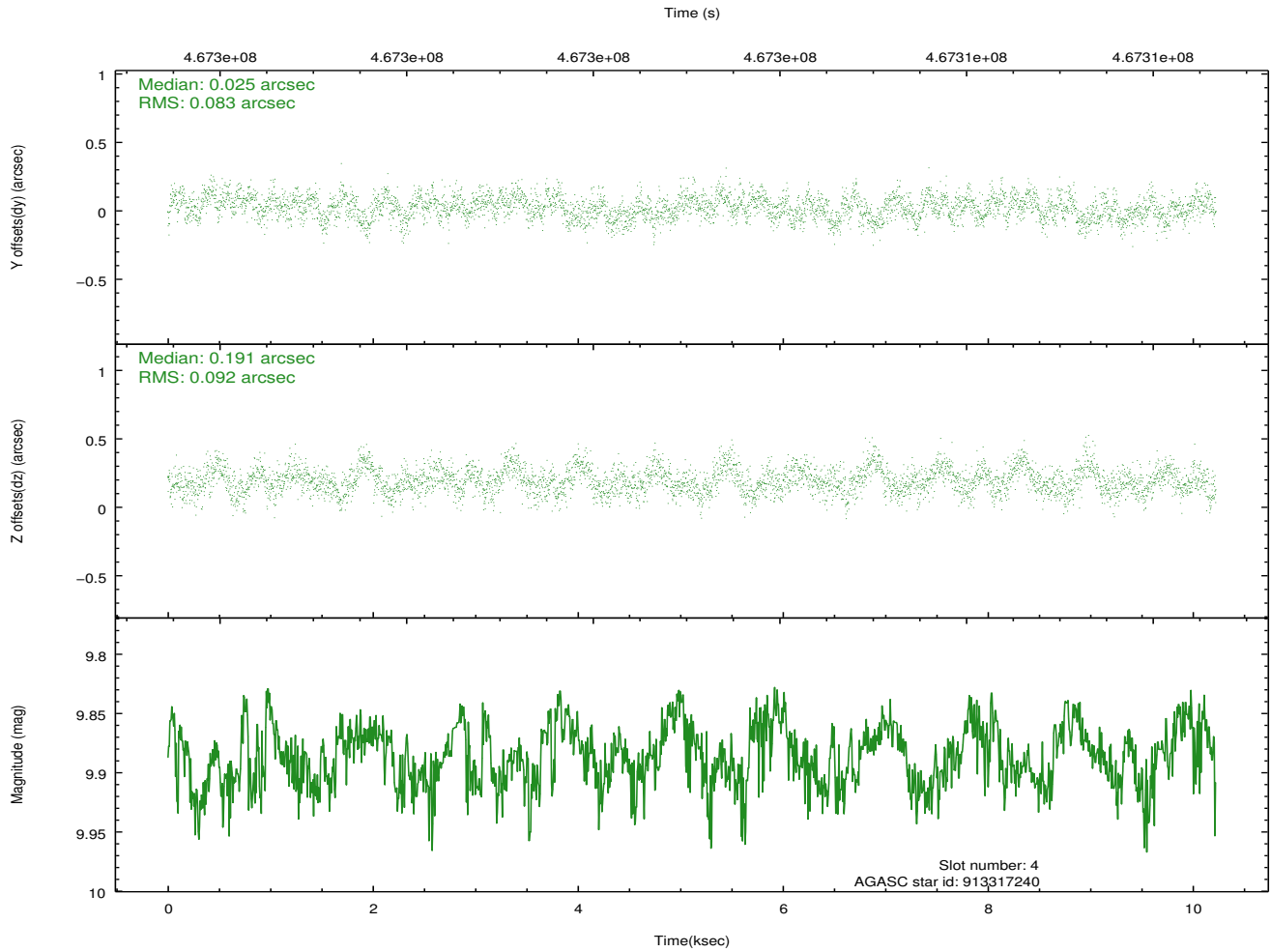
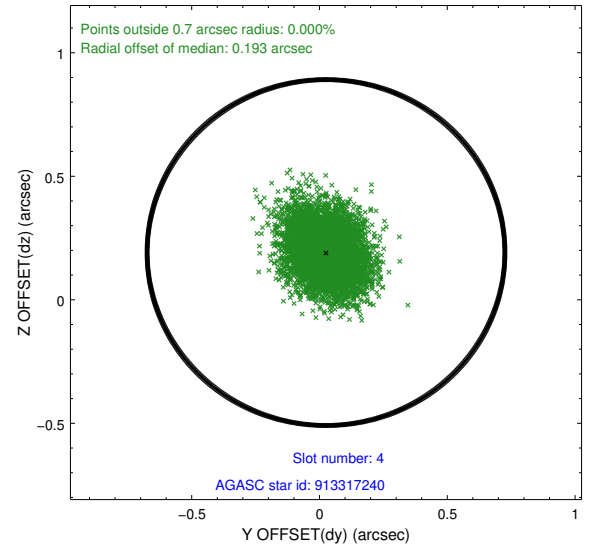
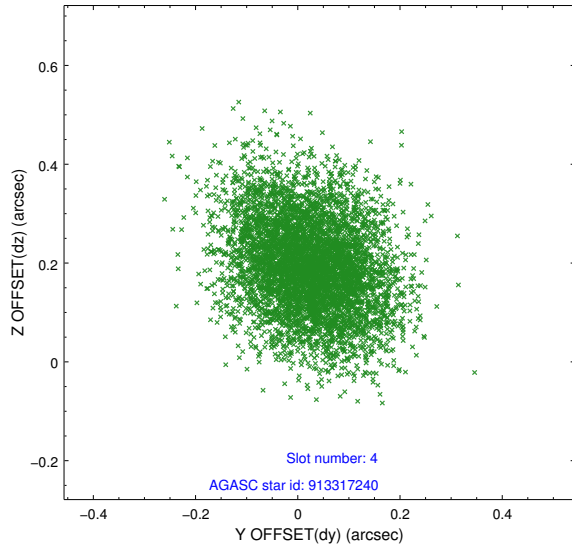
slot	status	used	id	mag	n_pts	med_dy	med_dz	dr1	dr2	ra	dec	mean_y	mean_z
0	FID		ACIS-S-2	7.03	2494	-0.139	-0.046	0.010	0.019	0.000000	0.000000	-768.79	-1736.29
1	FID		ACIS-S-4	7.13	2494	0.295	0.079	0.009	0.020	0.000000	0.000000	2144.67	171.79
2	FID		ACIS-S-5	7.16	2494	-0.187	-0.025	0.011	0.021	0.000000	0.000000	-1821.03	165.92
3	GUIDE	used	913312152	8.69	4987	-0.149	0.140	0.098	0.157	335.408046	-28.772672	-1075.30	-646.90
4	GUIDE	used	913317240	9.88	4984	0.025	0.191	0.133	0.213	336.007414	-28.262284	-1663.04	1926.98
5	GUIDE	used	913320520	10.08	4982	-0.170	-0.077	0.174	0.272	336.461904	-28.950999	1201.59	1856.50
6	GUIDE	used	913316056	9.00	4982	-0.108	-0.101	0.114	0.178	336.479615	-28.720135	523.62	2339.86
7	GUIDE	used	913311856	10.06	4986	0.414	-0.153	0.176	0.277	335.512846	-28.305954	-2341.78	505.46

2.4 Star Slots

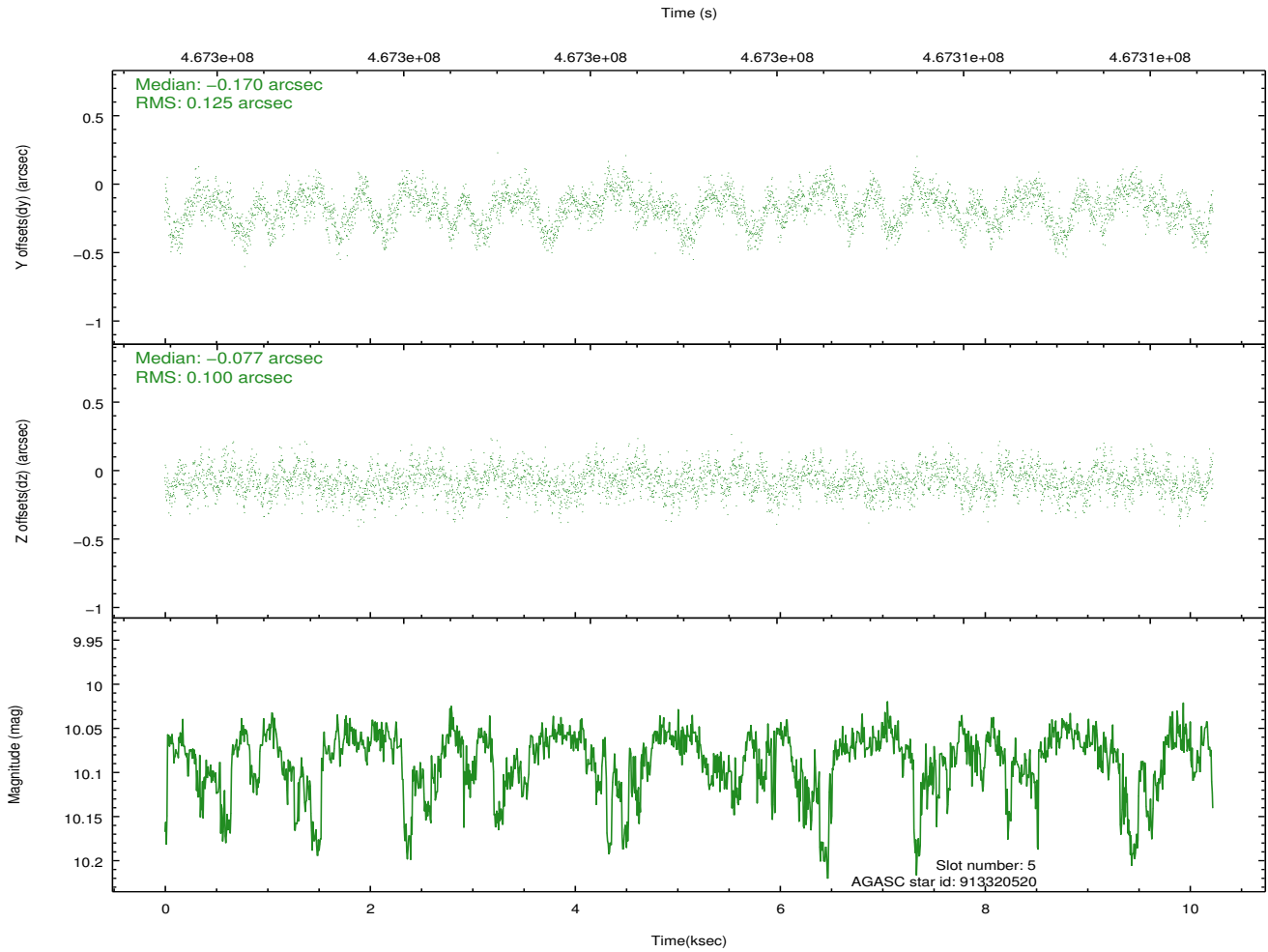
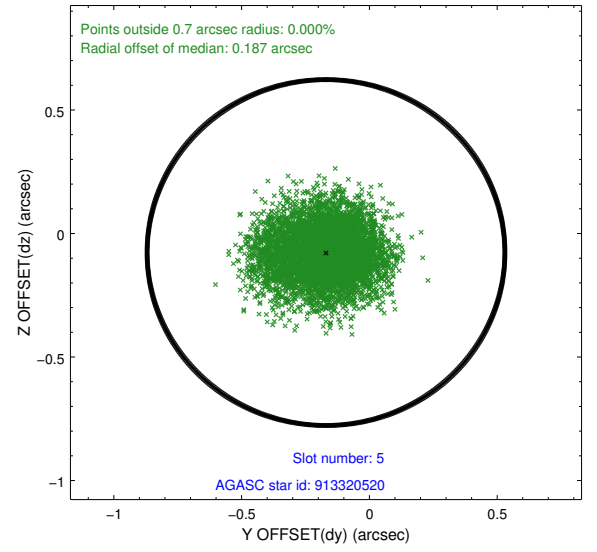
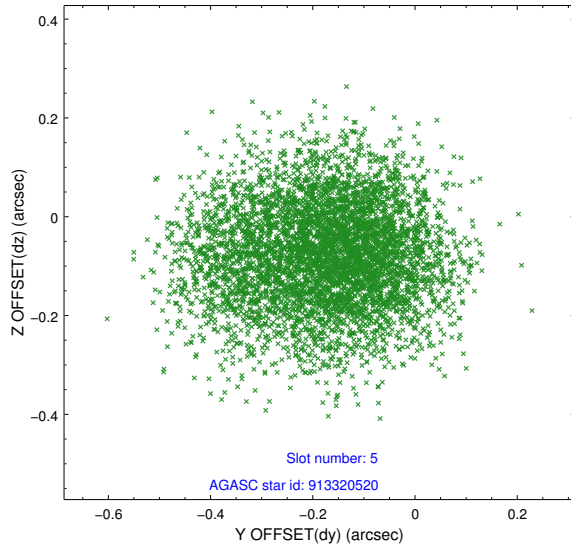
2.4.1 Slot 3



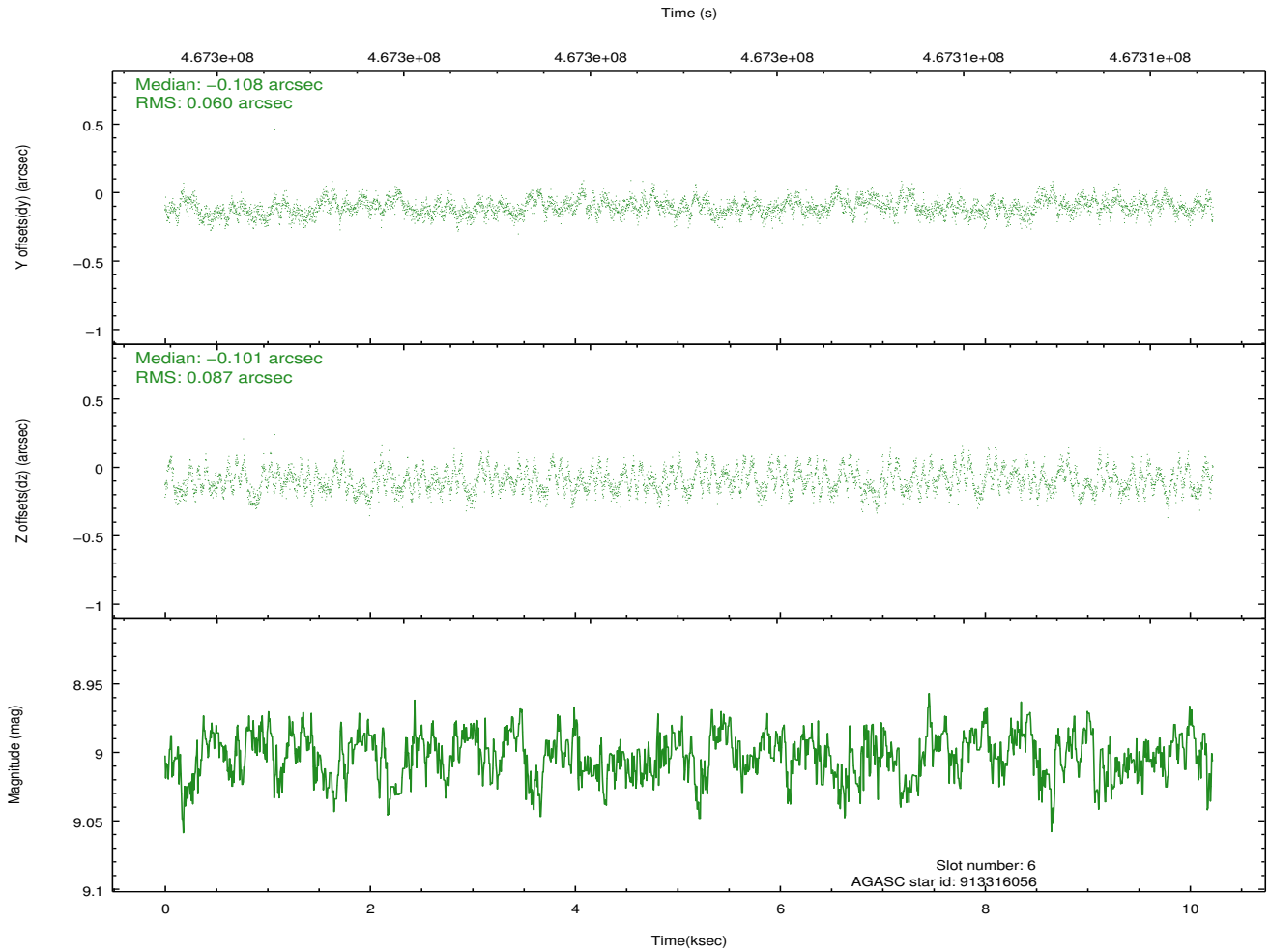
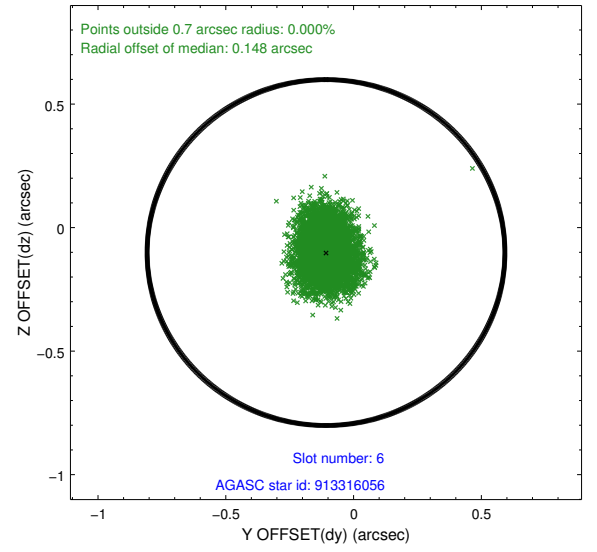
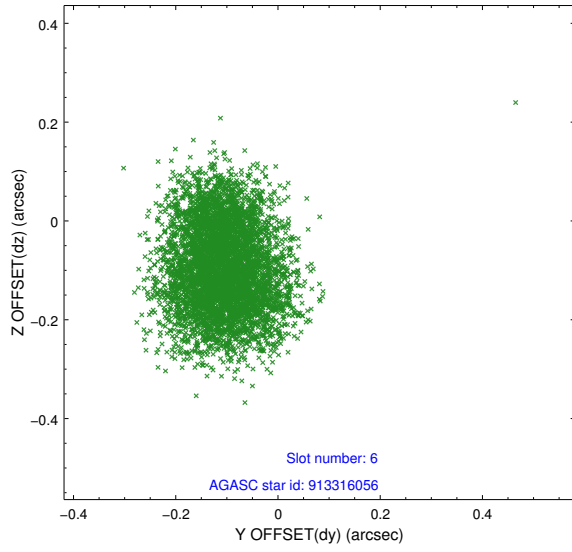
2.4.2 Slot 4



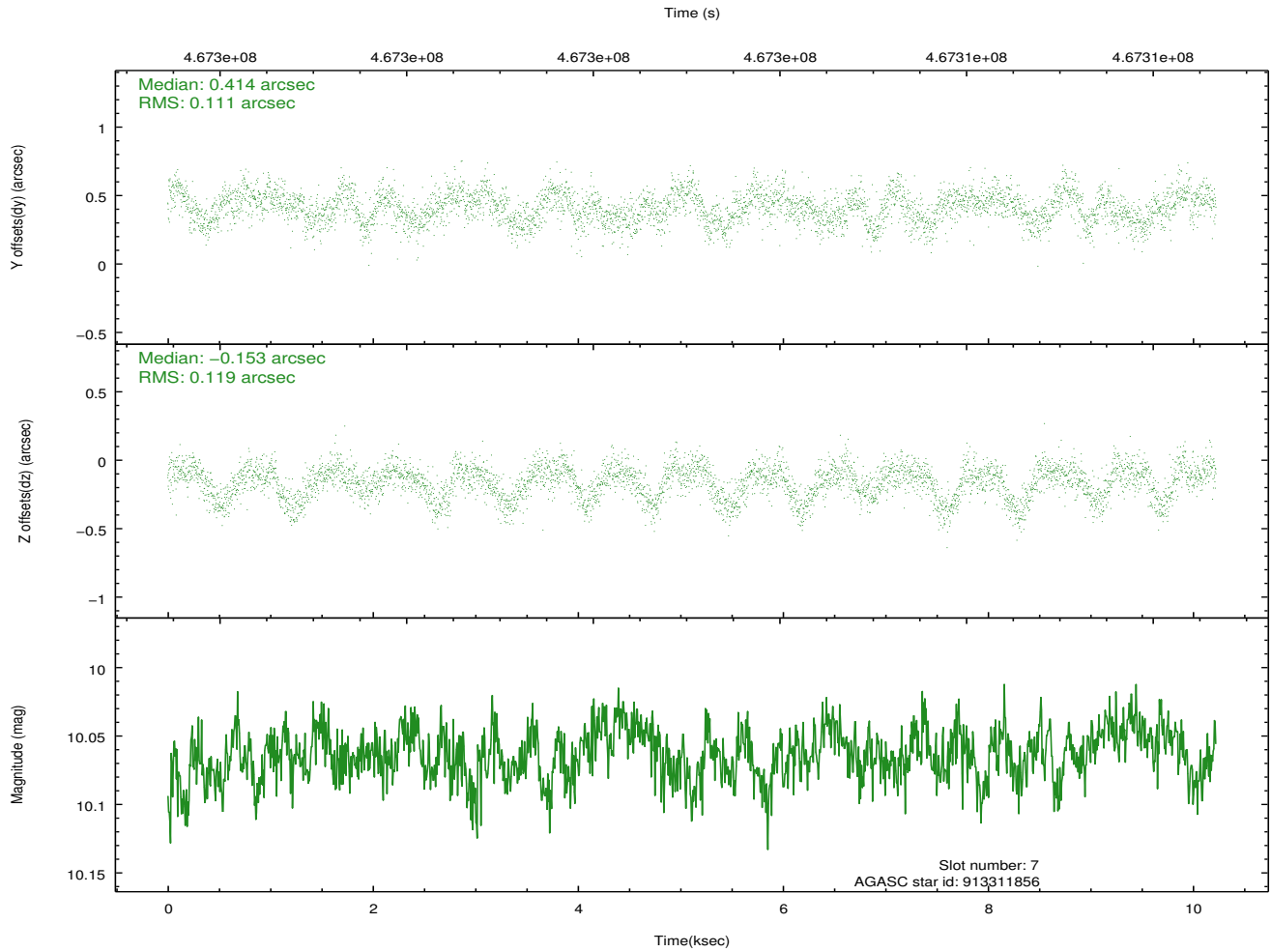
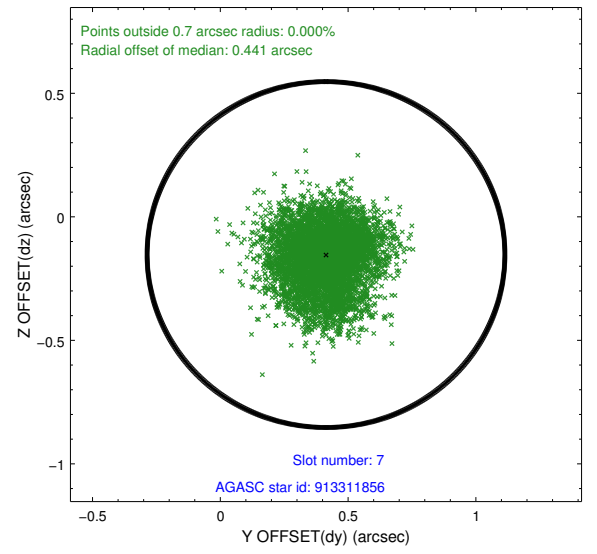
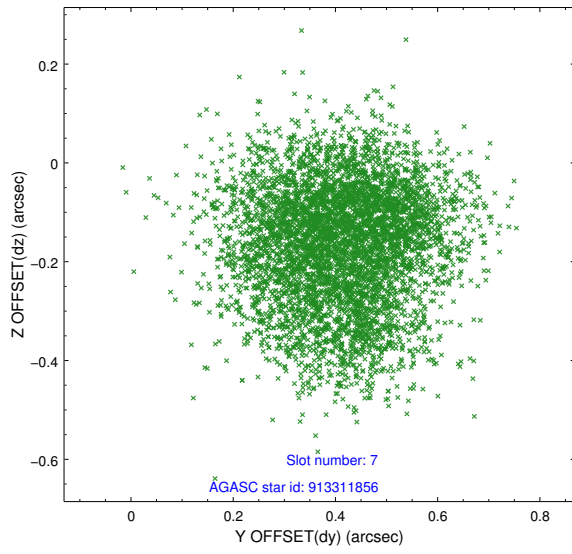
2.4.3 Slot 5



2.4.4 Slot 6

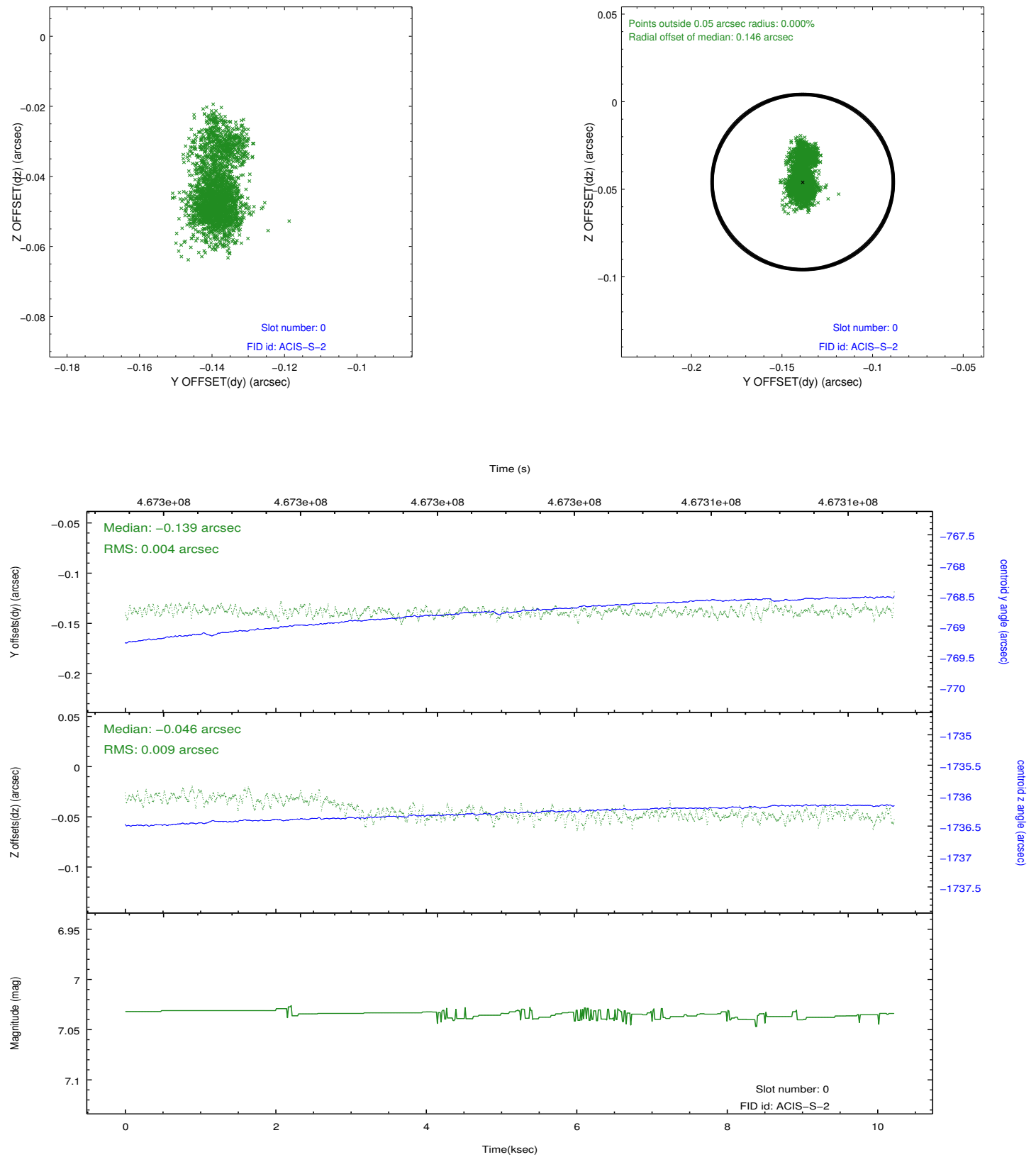


2.4.5 Slot 7

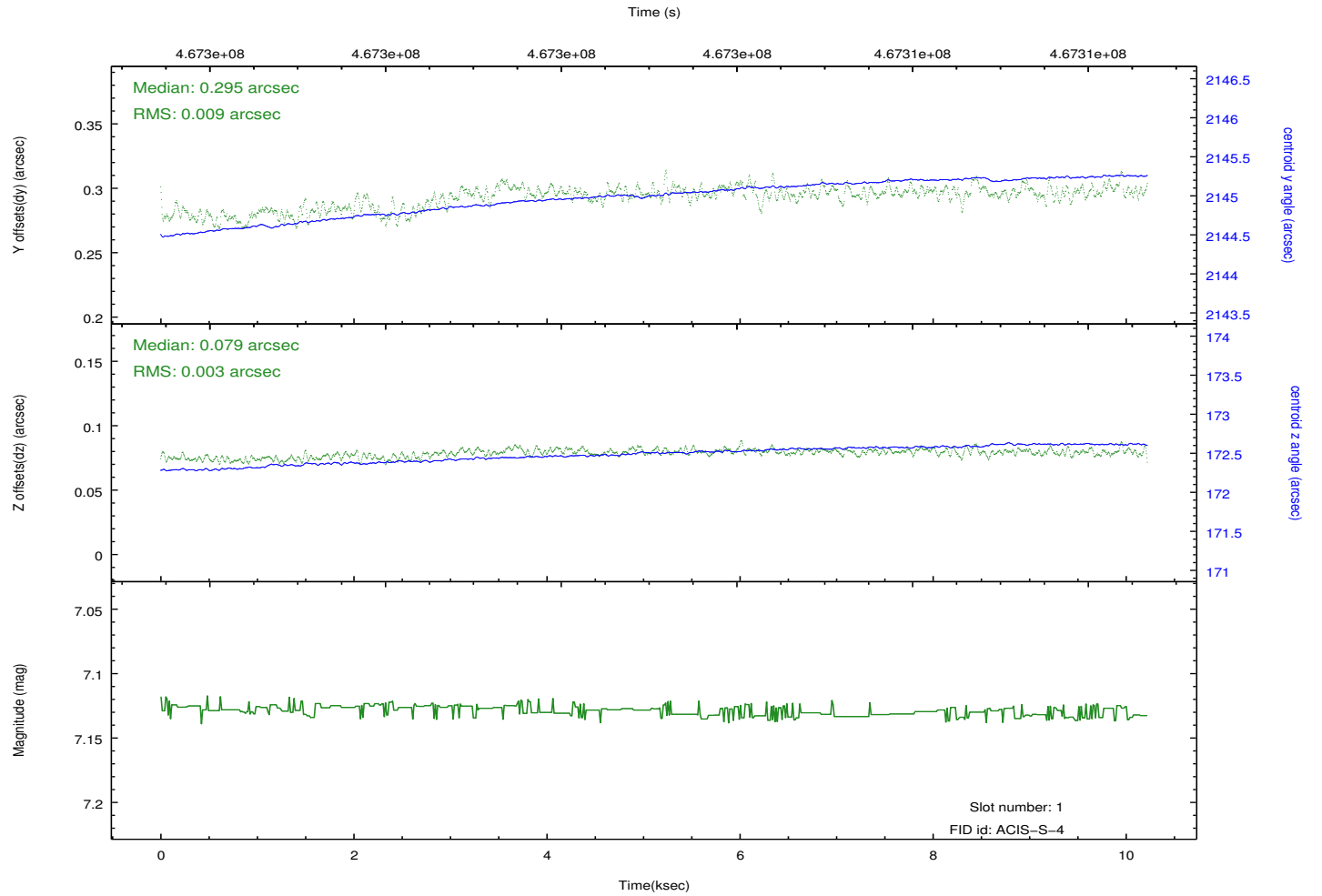
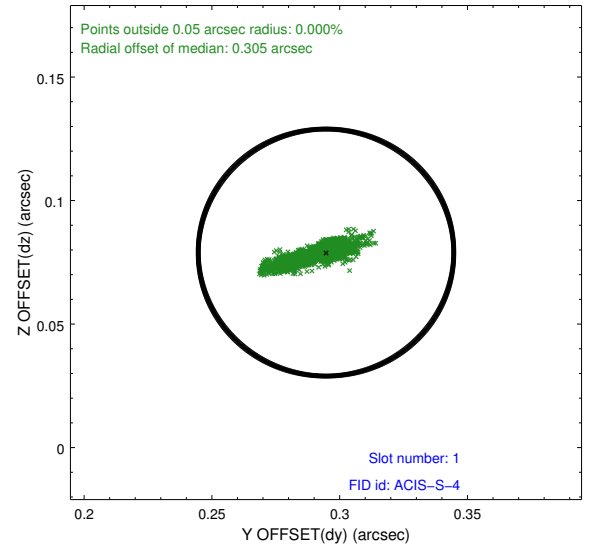
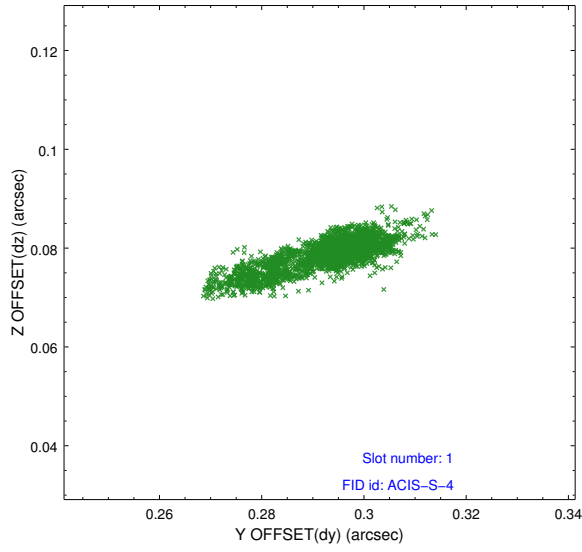


2.5 FID Slots

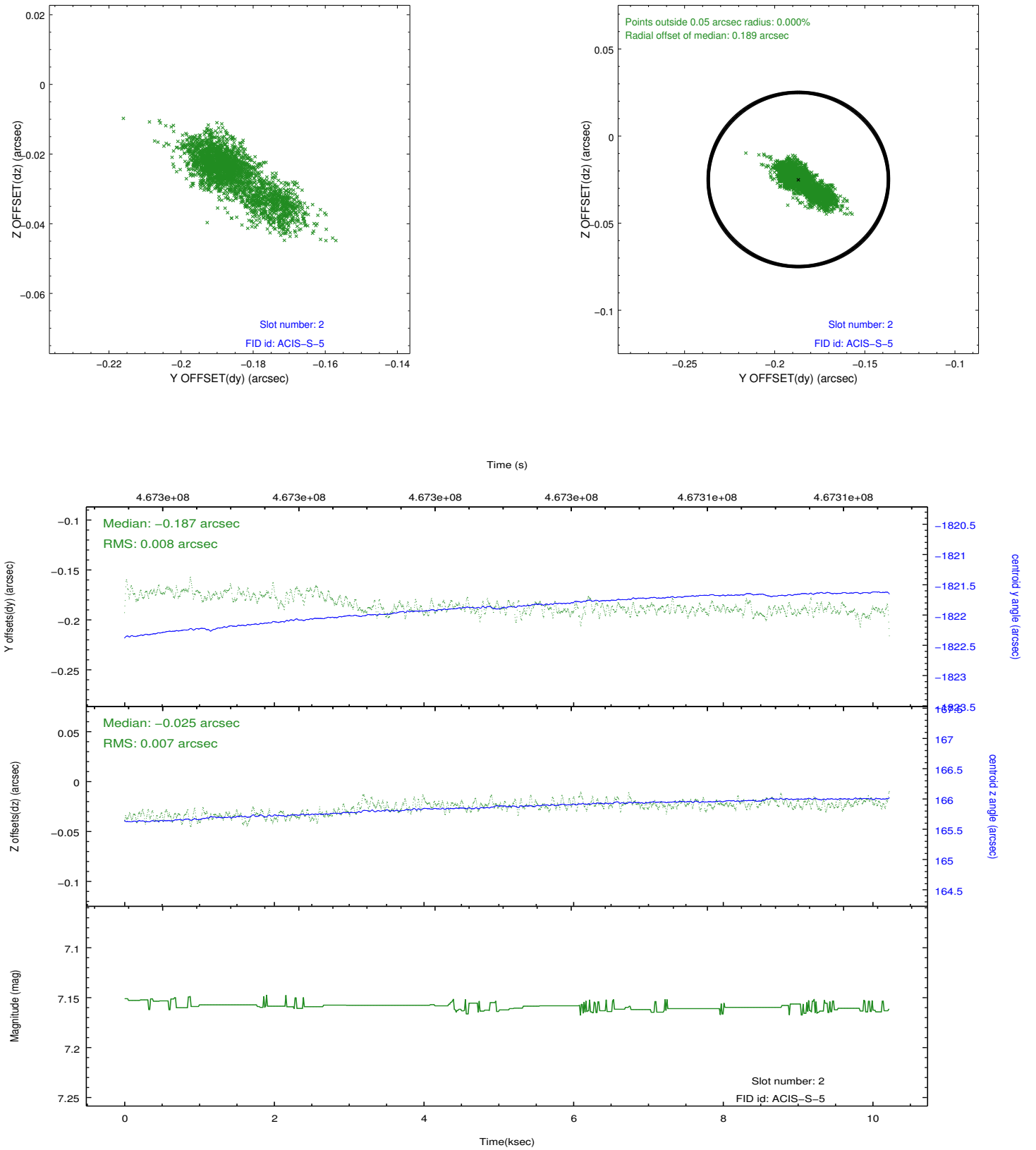
2.5.1 Slot 0



2.5.2 Slot 1



2.5.3 Slot 2



A Summary

A.1 Status

V&V Scientist	Beth Sundheim
V&V Date (YYYY-MM-DD)	2014.12.03
V&V Edition	1
V&V Disposition and Status	OK
V&V Charge Time	9.9583999629617

A.2 Comments

These data have been reprocessed with new aspect alignment calibration files that correct small mean offsets (up to 0.4 arcsecs) and improve overall astrometric accuracy. The new calibration was determined using data from the time period being reprocessed and was performed using cross-correlation of X-ray sources with radio and optical counterparts.