

# V&V Reference Report

## L2 ASCDS Version : 8.4.5

Observation 136 - L2 Version 5  
Chandra X-Ray Center

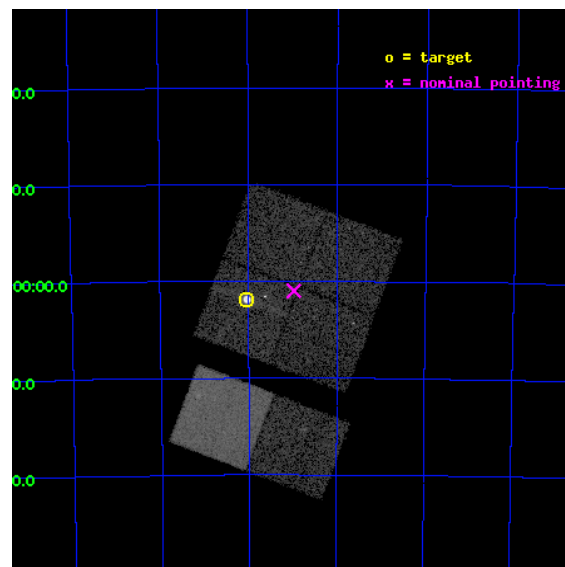
L2 Processing Date : Aug 24 2012

## Contents

<b>1</b>	<b>Front</b>	<b>2</b>
<b>2</b>	<b>OBI</b>	<b>3</b>
2.1	OBI . . . . .	3
2.1.1	Images . . . . .	3
2.1.2	Bias . . . . .	3
2.1.3	Parameters . . . . .	4
2.1.4	Events . . . . .	4
2.2	Compared Parameters . . . . .	5
2.3	Aspect . . . . .	6
2.4	Star Slots . . . . .	9
2.4.1	Slot 3 . . . . .	9
2.4.2	Slot 4 . . . . .	10
2.4.3	Slot 5 . . . . .	11
2.4.4	Slot 6 . . . . .	12
2.4.5	Slot 7 . . . . .	13
2.5	FID Slots . . . . .	14
2.5.1	Slot 0 . . . . .	14
2.5.2	Slot 1 . . . . .	15
2.5.3	Slot 2 . . . . .	16
<b>A</b>	<b>Summary</b>	<b>17</b>
A.1	Status . . . . .	17
A.2	Comments . . . . .	17

# 1 Front

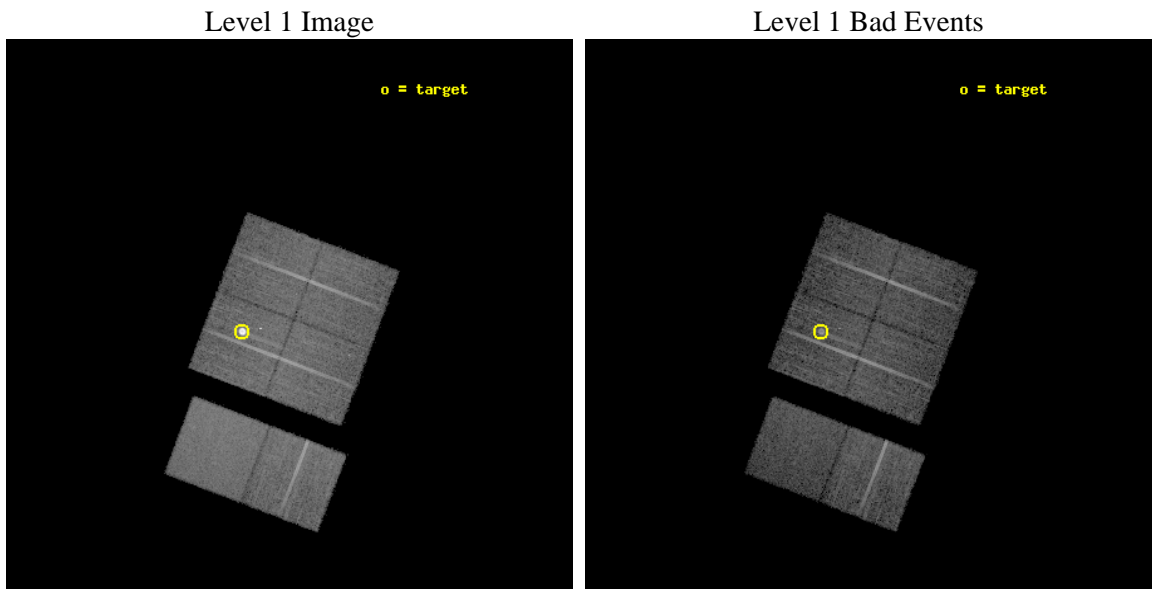
seq_num	590004	Sequence number
obs_id	136	Observation id
title	ACIS CHIP RESPONSE TO LINES WITH E	Proposal title
observer	DR. CXC CALIBRATION	Principal investigator
object	E0102-72.3 [Chip I3, T	Source name
dtcycle	0	&#160
cycle	P	events from which exps? Prim/Second/Both
ra_targ	16.01	Observer's specified target RA [deg]
dec_targ	-72.032028	Observer's specified target Dec [deg]
ra_nom	15.743675713299	Nominal RA [deg]
dec_nom	-72.016449572272	Nominal Dec [deg]
roll_nom	200.80513528113	Nominal Roll [deg]
revision	5	Processing version of data
ontime	10051.200009346	Sum of GTIs [s]
livetime	9923.9256627216	Livetime [s]
ontime0	10051.200009346	Sum of GTIs [s]
ontime1	10051.200009346	Sum of GTIs [s]
ontime2	10051.200009346	Sum of GTIs [s]
ontime3	10051.200009346	Sum of GTIs [s]
ontime6	10051.200009346	Sum of GTIs [s]
ontime7	10051.200009346	Sum of GTIs [s]
l2events	107015	Number of level 2 events



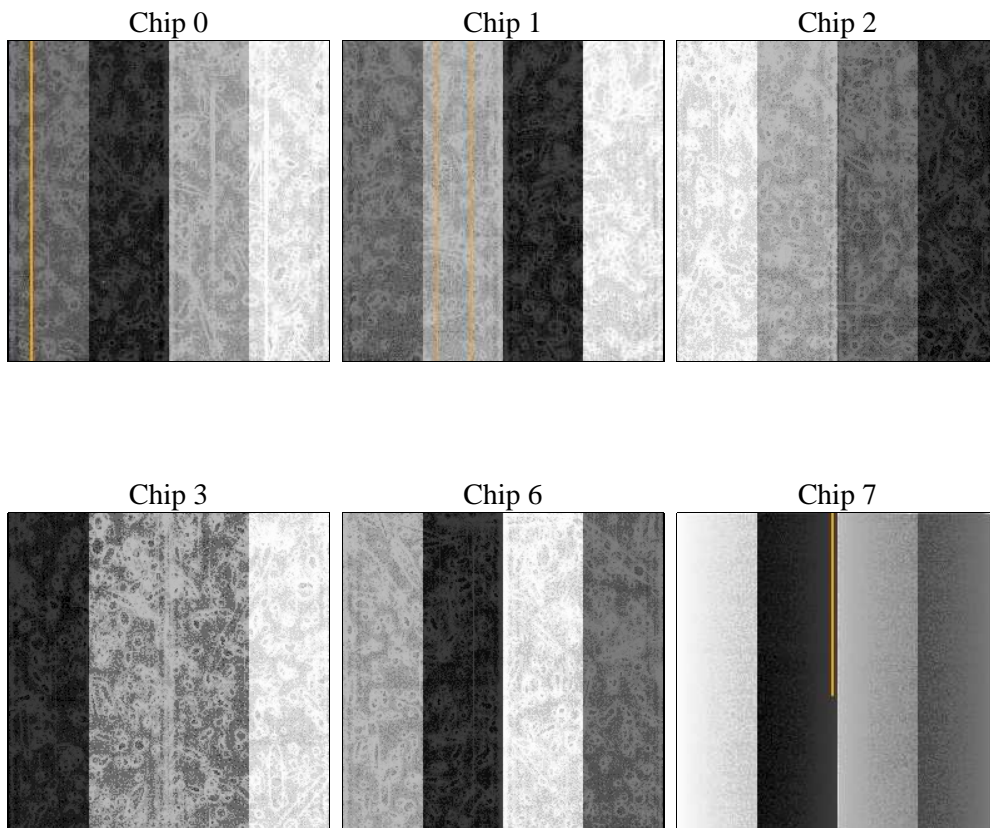
## 2 OBI

### 2.1 OBI

#### 2.1.1 Images



#### 2.1.2 Bias



### 2.1.3 Parameters

obi_num	0	Obi number	sched_exp_time	10000.000000	[s] Scheduled observation exposure time
ascdsver	8.4.5	Processing system revision	ontime	10051.200009346	Sum of GTIs [s]
caldsver	4.5.1.1	&#160	ontime0	10051.200009346	Sum of GTIs [s]
date	2012-08-24T14:32:50	Date and time of file creation	ontime1	10051.200009346	Sum of GTIs [s]
revision	5	Processing version of data	ontime2	10051.200009346	Sum of GTIs [s]
			ontime3	10051.200009346	Sum of GTIs [s]
			ontime6	10051.200009346	Sum of GTIs [s]
			ontime7	10051.200009346	Sum of GTIs [s]
			l1events	485938	Number of level 1 events

### 2.1.4 Events

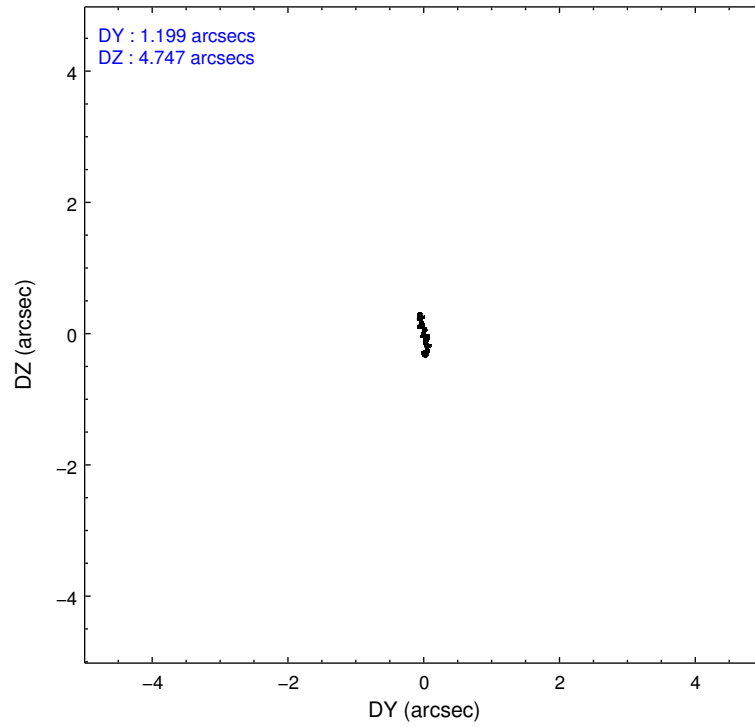
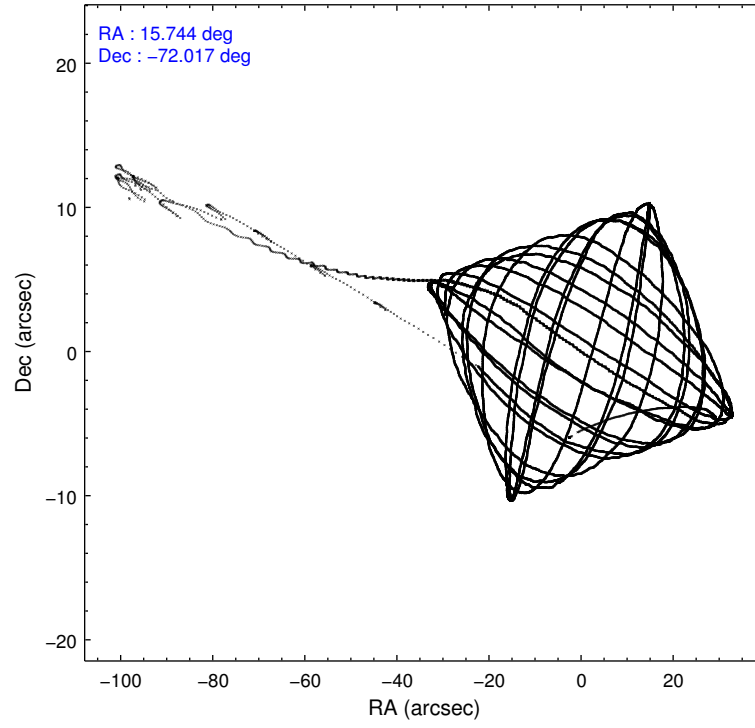
	ccd 0	ccd 1	ccd 2	ccd 3	ccd 6	ccd 7		ccd 0	ccd 1	ccd 2	ccd 3	ccd 6	ccd 7
level 1 events	66663	66683	74101	116482	76720	85289	grade 0 events	3756	3625	3588	39239	3459	3847
rejected events	58538	58259	66217	68829	68706	49012		5%	5%	4%	33%	4%	4%
rejected %	87%	87%	89%	59%	89%	57%	grade 1 events	49	25	40	467	30	80
								0%	0%	0%	0%	0%	0%
							grade 2 events	1582	1613	1643	4370	1498	7288
								2%	2%	2%	3%	1%	8%
							grade 3 events	832	943	735	1500	861	3435
								1%	1%	0%	1%	1%	4%
							grade 4 events	748	837	751	1467	768	3367
								1%	1%	1%	1%	1%	3%
							grade 5 events	2347	2465	2205	2569	2773	8212
								3%	3%	2%	2%	3%	9%
							grade 6 events	1307	1491	1265	1609	1516	18784
								1%	2%	1%	1%	1%	22%
							grade 7 events	56042	55684	63874	65261	65815	40276
								84%	83%	86%	56%	85%	47%

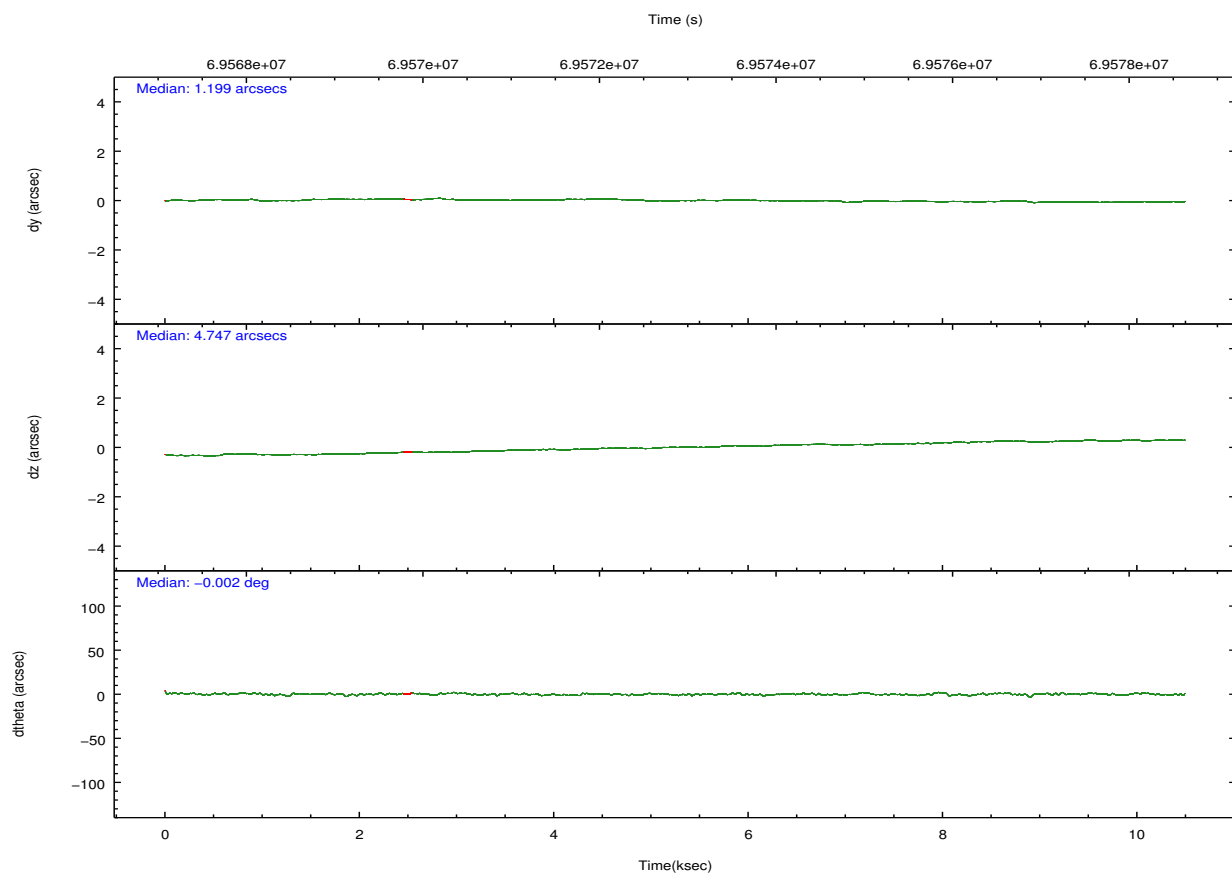
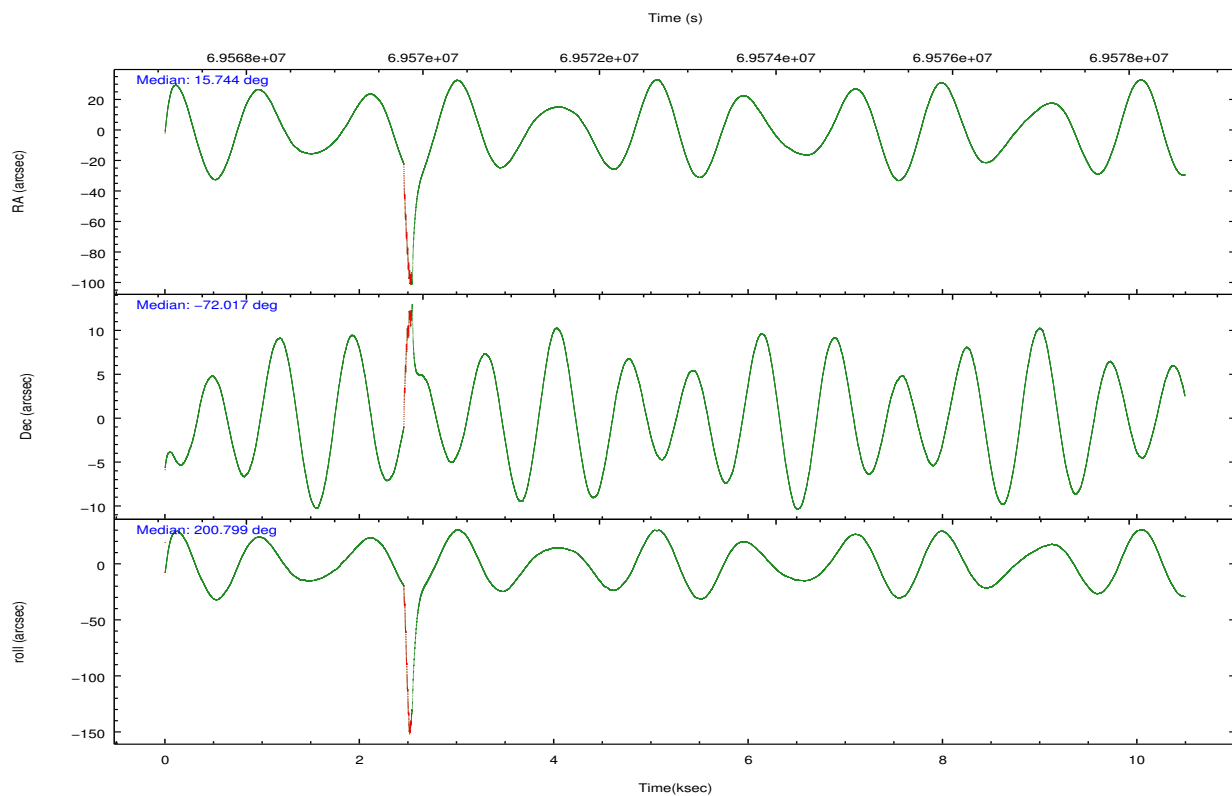


## 2.2 Compared Parameters

Parameter	Planned	Actual	Parameter	Planned	Actual
Instrument	ACIS	ACIS	Obspar format version number	7	7
Detector	ACIS-012367	ACIS-012367	Obspar file type	PREDICTED	ACTUAL
Grating	NONE	NONE	Obspar update status	OVERRIDE	OVERRIDE
Data mode	FAINT	FAINT	Number of optional ACIS chips dropped	0	0
Observation mode	POINTING	POINTING	On-chip summing requested	N	N
[deg] Pointing RA	15.74367571329918	15.74367571329918	Subarray requested	NONE	NONE
[deg] Pointing Dec	-72.01644957227194	-72.01644957227194	Alternating exposures requested	N	N
[deg] Pointing Roll	200.8051352811329	200.8051352811329	[s] Primary exposure time	3.200000	3.200000
[mm] SIM focus pos	-0.78090834371673	-0.78090834371673			
[mm] SIM defocus	0.001439854621703041	0.001439854621703041			
[mm] SIM translation stage pos	-233.5874344608	-233.5874344608			
[mm] SIM translation stage offset	-0.005028630631784381	-0.005028630631784381			
[s] Observation start time (MET)	69567609.750549	69567609.750549			
Observation start date	2000-03-16T04:27:19	2000-03-16T04:20:09			
[s] Observation end time (MET)	69578104.725933	69578104.725933			
Observation end date	2000-03-16T07:13:59	2000-03-16T07:15:04			
Read mode	TIMED	TIMED			

## 2.3 Aspect



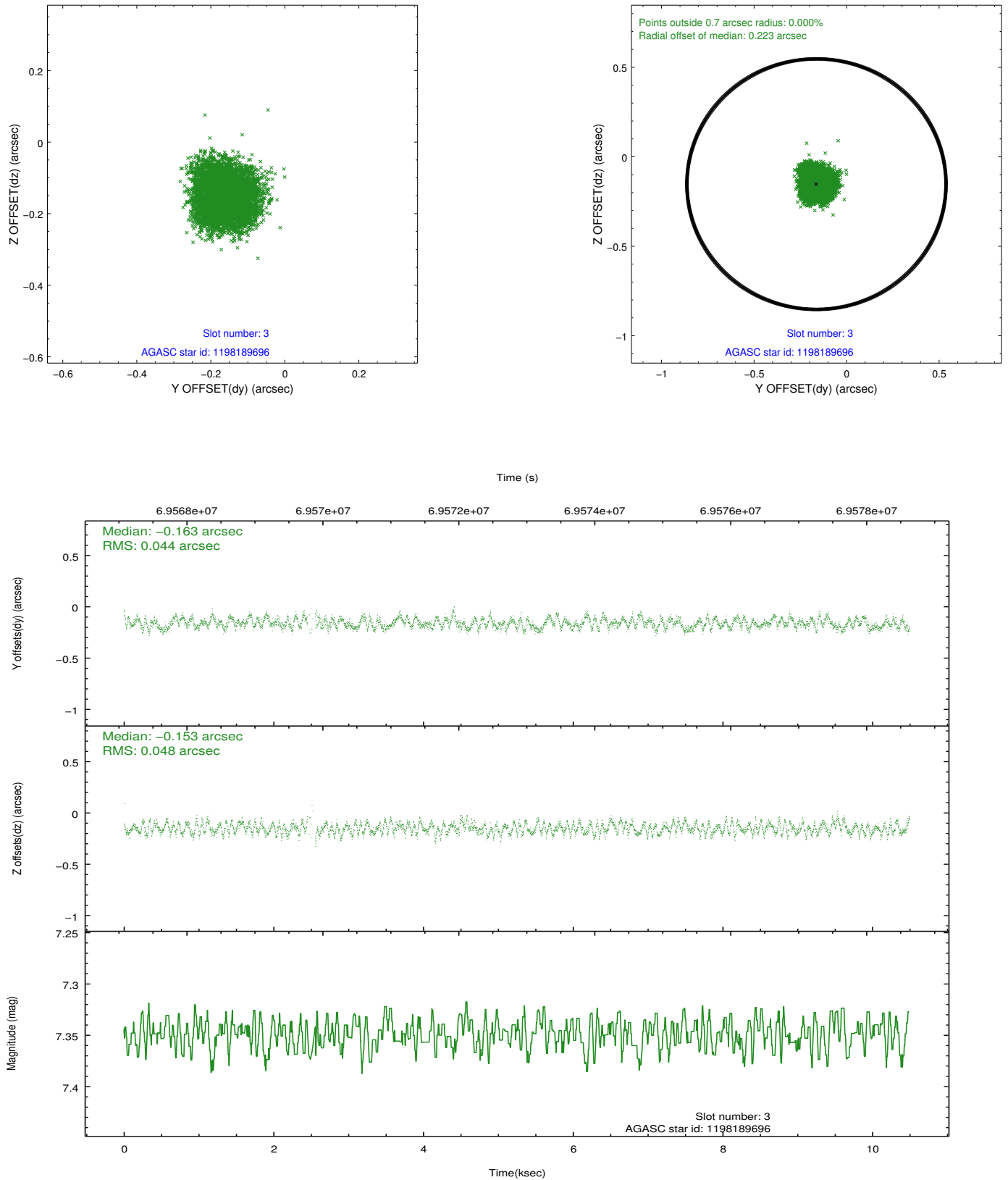


### Slot Statistics

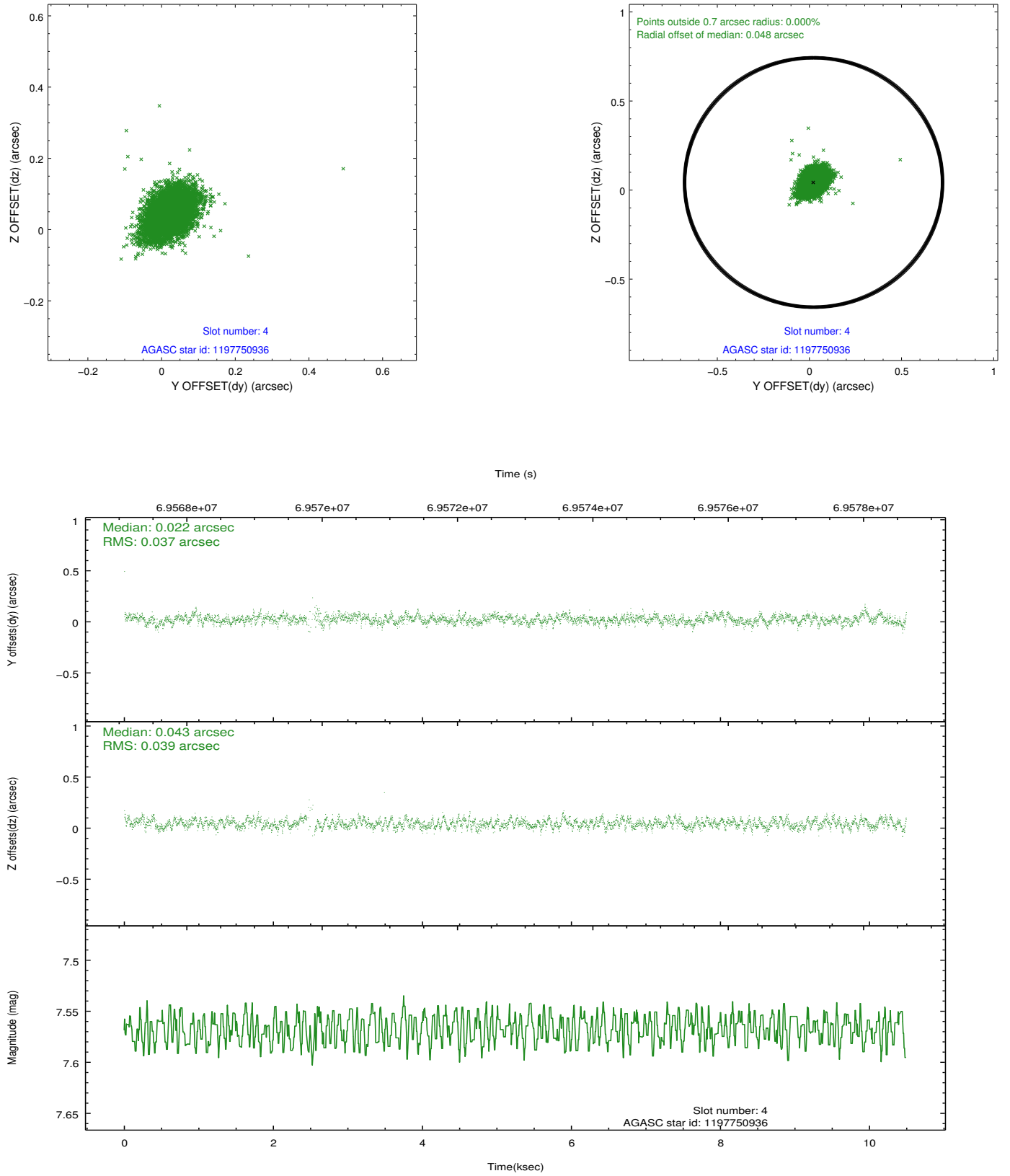
slot	status	id	mag	n_pts	med_dy	med_dz	dr1	dr2	ra	dec	mean_y	mean_z
0	FID	ACIS-I-2	7.15	2560	-0.036	-0.034	0.010	0.016	0.000000	0.000000	-755.56	-834.47
1	FID	ACIS-I-4	7.19	2559	-0.025	0.038	0.008	0.014	0.000000	0.000000	2158.28	1071.53
2	FID	ACIS-I-5	7.23	2559	-0.040	0.065	0.010	0.016	0.000000	0.000000	-1808.75	1069.97
3	GUIDE	1198189696	7.35	5076	-0.163	-0.153	0.071	0.108	15.223750	-72.697522	1470.90	2150.59
4	GUIDE	1197750936	7.57	5080	0.022	0.043	0.055	0.093	15.387940	-71.549550	-124.20	-1665.42
5	GUIDE	1197750640	9.74	5078	0.107	-0.068	0.093	0.152	15.758835	-72.088048	161.79	295.77
6	GUIDE	1197878768	9.62	5077	0.052	0.142	0.095	0.154	16.656786	-71.304581	-1798.01	-1971.88
7	GUIDE	1197749664	9.57	5077	-0.020	0.034	0.094	0.153	15.809015	-72.366369	462.71	1252.97

## 2.4 Star Slots

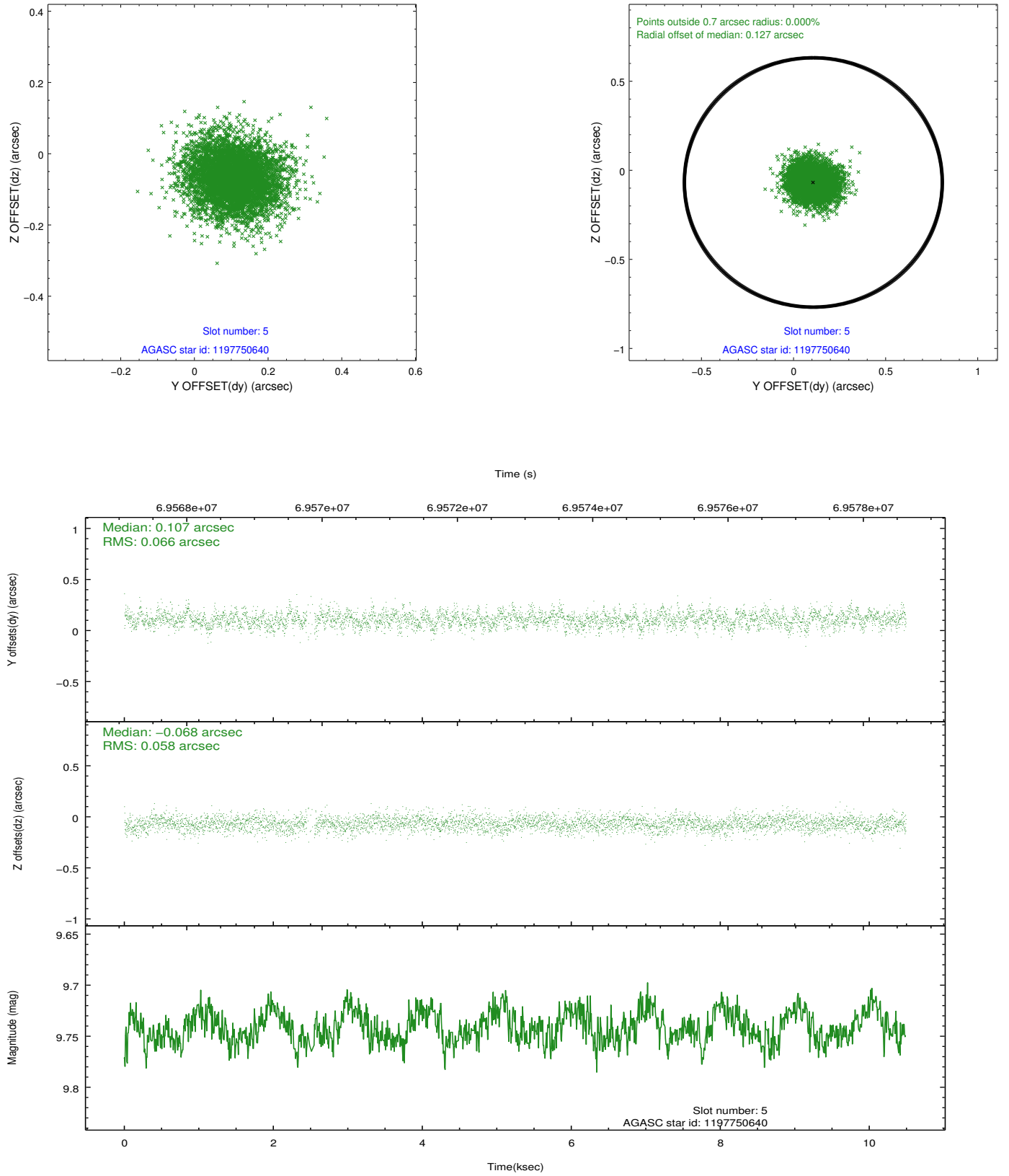
### 2.4.1 Slot 3



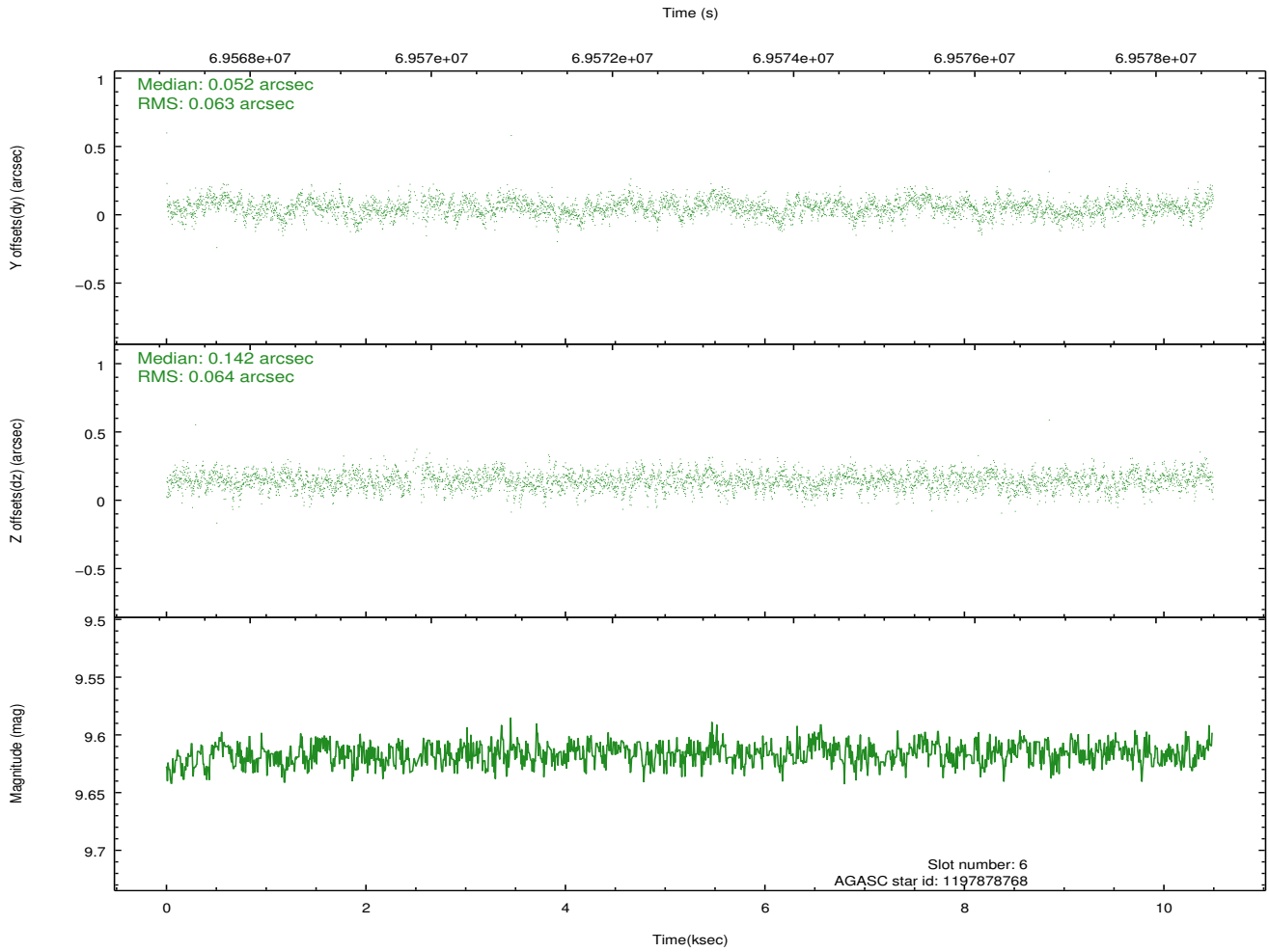
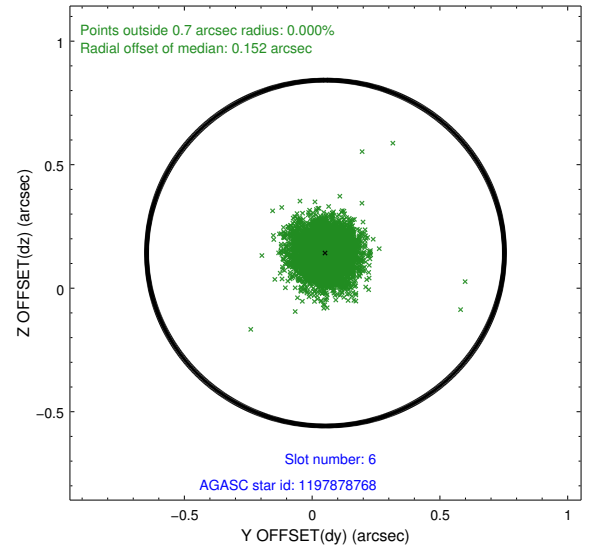
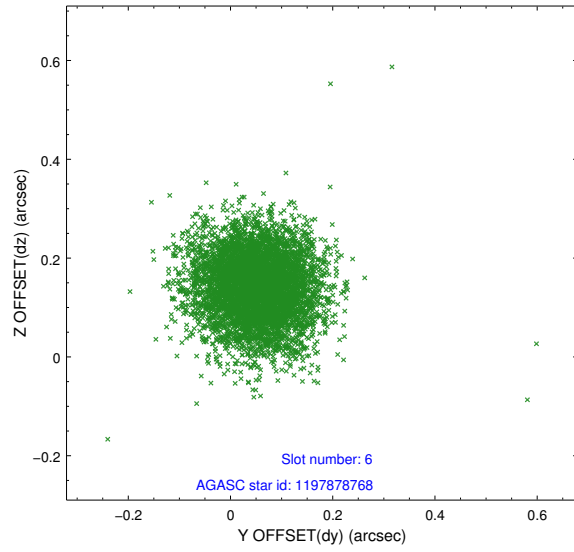
## 2.4.2 Slot 4



### 2.4.3 Slot 5

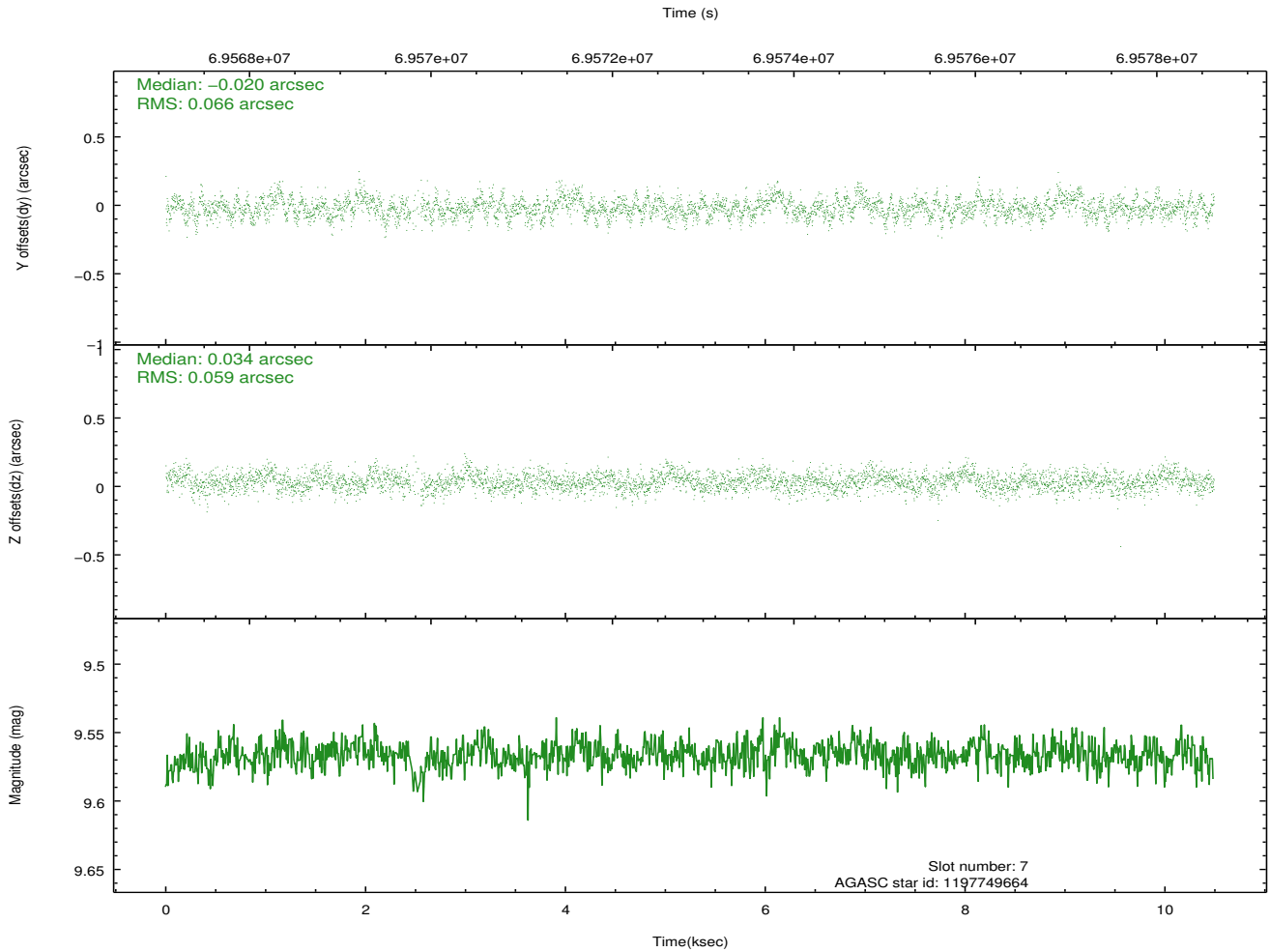
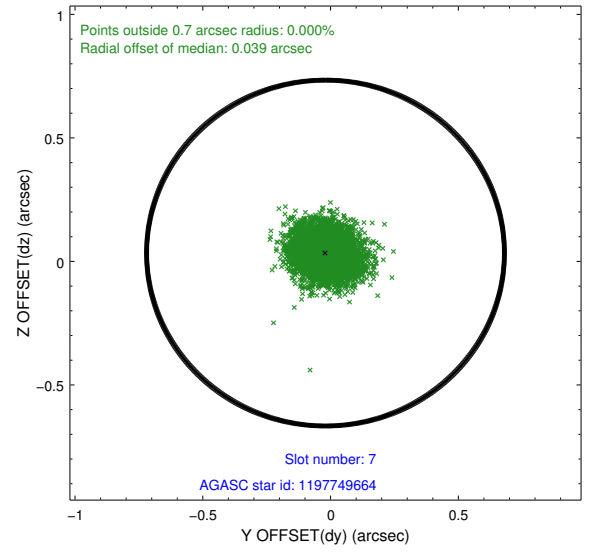
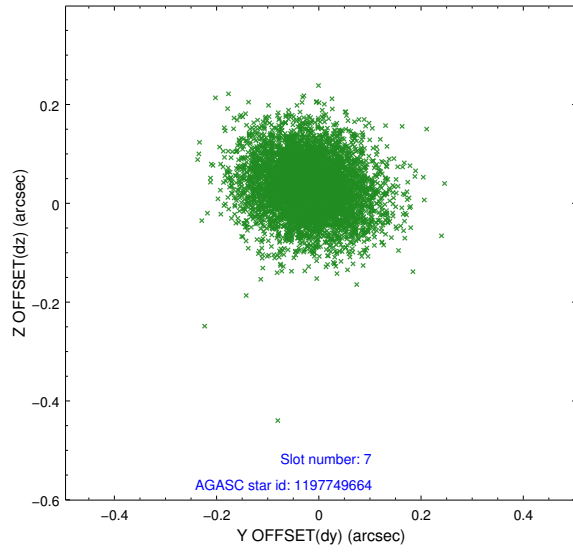


## 2.4.4 Slot 6



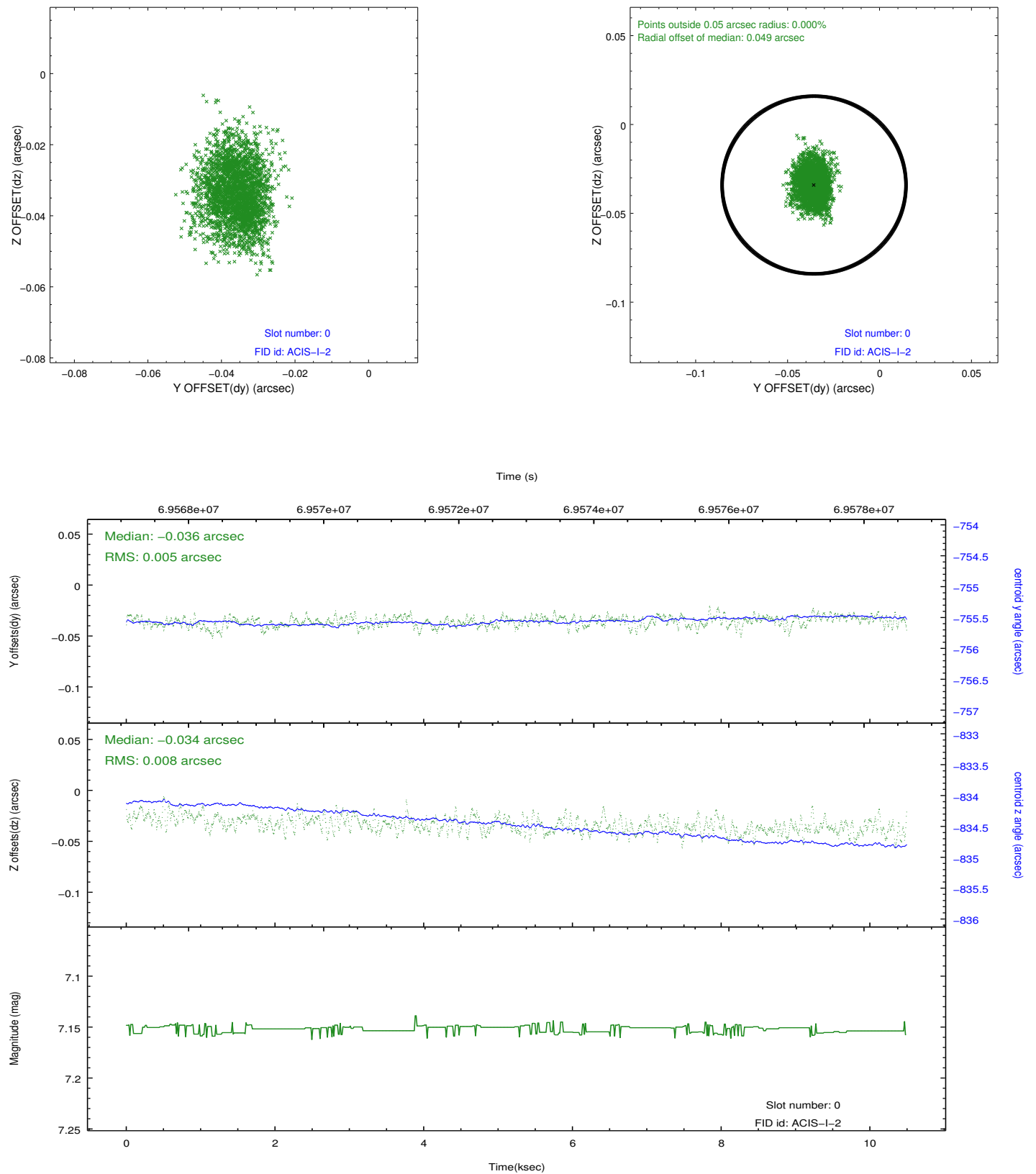


## 2.4.5 Slot 7

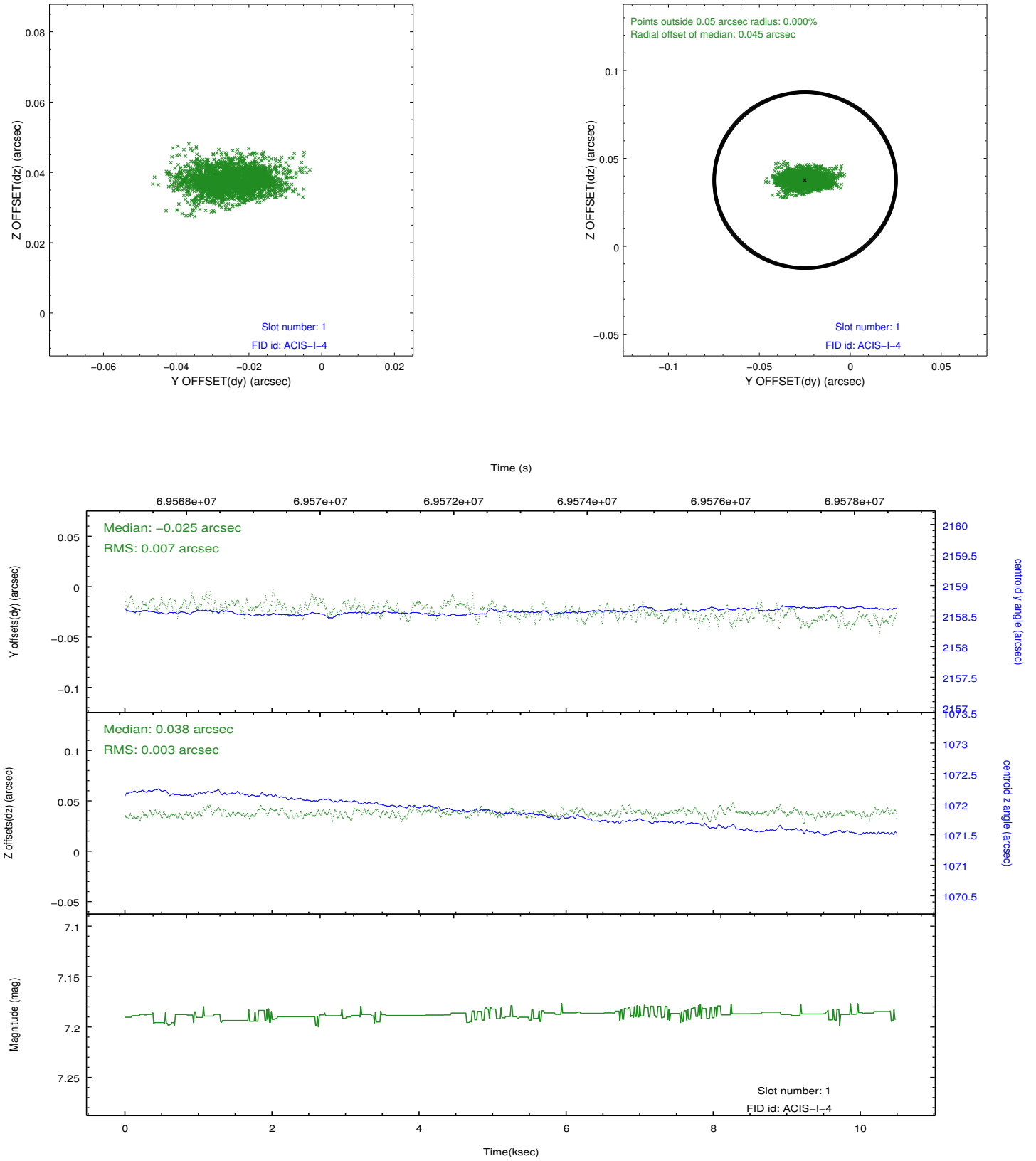


## 2.5 FID Slots

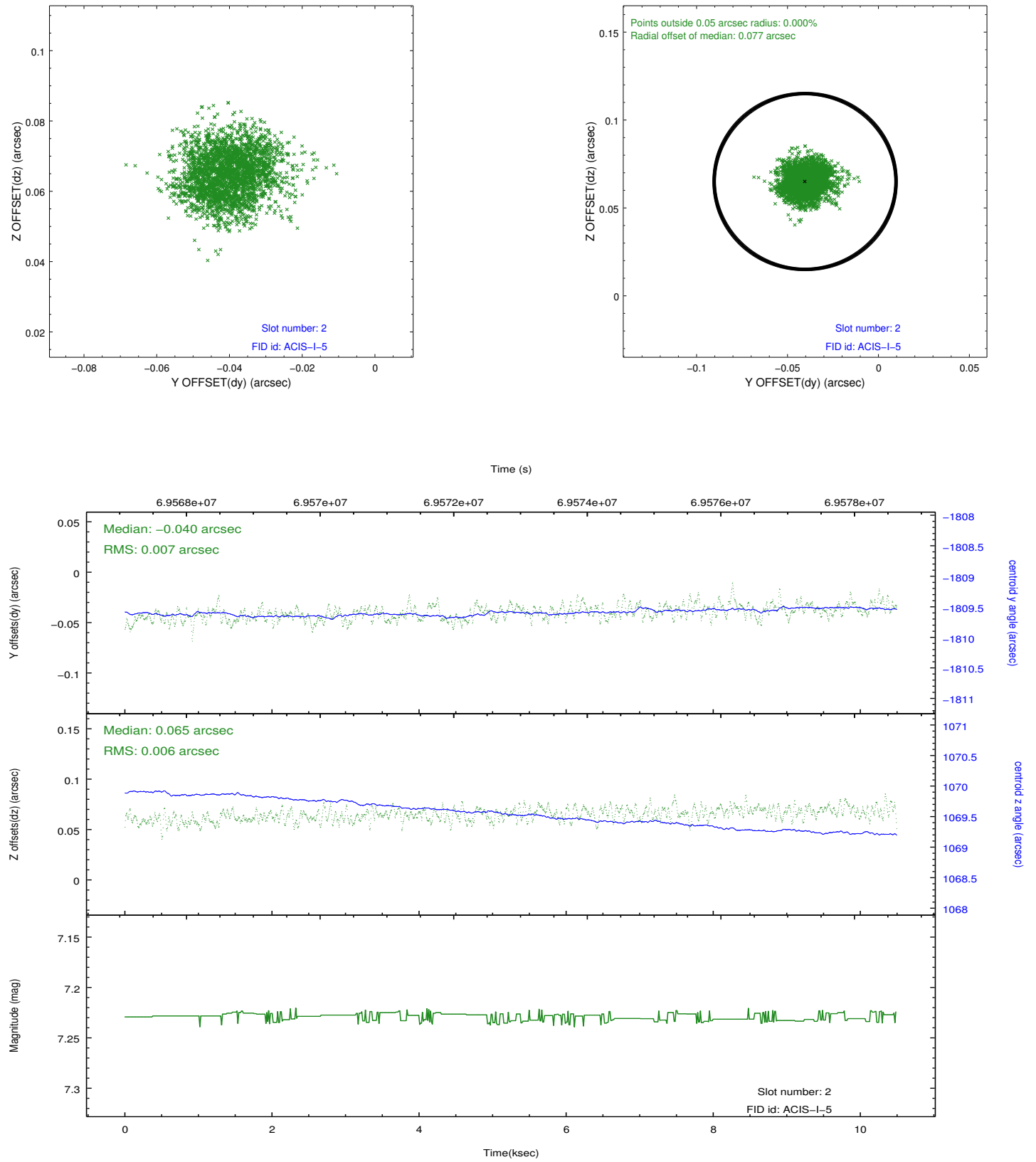
### 2.5.1 Slot 0



## 2.5.2 Slot 1



### 2.5.3 Slot 2



# A Summary

## A.1 Status

V&V Scientist	Jen Lauer
V&V Date (YYYY-MM-DD)	2012.08.27
V&V Edition	1
V&V Disposition and Status	OK
V&V Charge Time	9.993

## A.2 Comments

Charge time for this ObsId remains at previous value of 9.993 ks.  
although with the current processing the charge time would have been  
10.05 ksec.