

V&V Reference Report

L2 ASCDS Version : 8.4.5

Observation 1316 - L2 Version 3
Chandra X-Ray Center

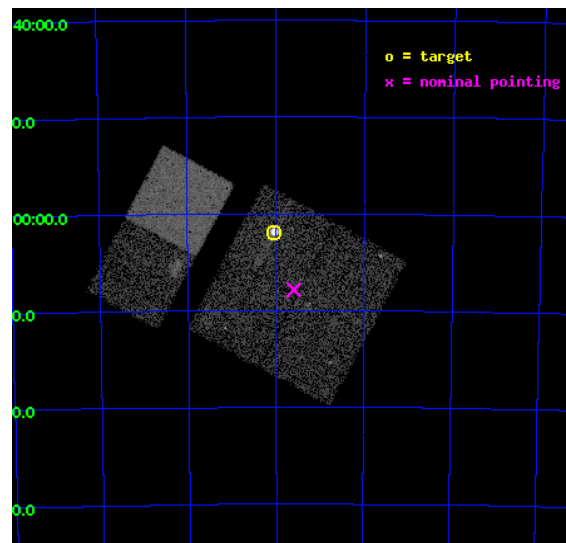
L2 Processing Date : Oct 1 2012

Contents

1	Front	2
2	OBI	3
2.1	OBI	3
2.1.1	Images	3
2.1.2	Bias	3
2.1.3	Parameters	4
2.1.4	Events	4
2.2	Compared Parameters	5
2.3	Aspect	6
2.4	Star Slots	9
2.4.1	Slot 3	9
2.4.2	Slot 4	10
2.4.3	Slot 5	11
2.4.4	Slot 6	12
2.4.5	Slot 7	13
2.5	FID Slots	14
2.5.1	Slot 0	14
2.5.2	Slot 1	15
2.5.3	Slot 2	16
A	Summary	17
A.1	Status	17
A.2	Comments	17

1 Front

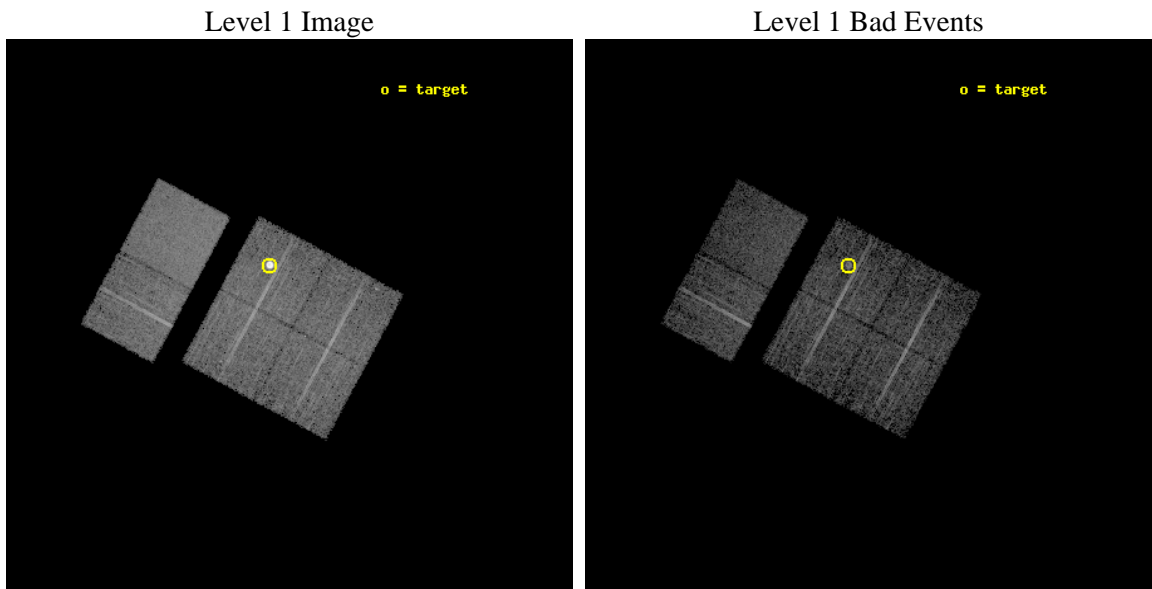
seq_num	590130	Sequence number
obs_id	1316	Observation id
title	ACIS CALIBRATION OBSERVATION OF THE SUPERNOVA REMNANT E0102-72 (DEC 2000)	Proposal title
observer	Dr. CXC Calibration	Principal investigator
object	E0102-72.3 [Chip I3, T=120, Offsets=-4,4,0]	Source name
dtcycle	0	
cycle	P	events from which exps? Prim/Second/Both
ra_targ	16.01	Observer's specified target RA [deg]
dec_targ	-72.032028	Observer's specified target Dec [deg]
ra_nom	15.898620169121	Nominal RA [deg]
dec_nom	-72.130969446056	Nominal Dec [deg]
roll_nom	298.32940456096	Nominal Roll [deg]
revision	3	Processing version of data
ontime	6956.8000064641	Sum of GTIs [s]
livetime	6868.7088159002	Livetime [s]
ontime0	6956.8000064641	Sum of GTIs [s]
ontime1	6956.8000064641	Sum of GTIs [s]
ontime2	6956.8000064641	Sum of GTIs [s]
ontime3	6956.8000064641	Sum of GTIs [s]
ontime6	6956.8000064641	Sum of GTIs [s]
ontime7	6953.5590661317	Sum of GTIs [s]
l2events	67802	Number of level 2 events



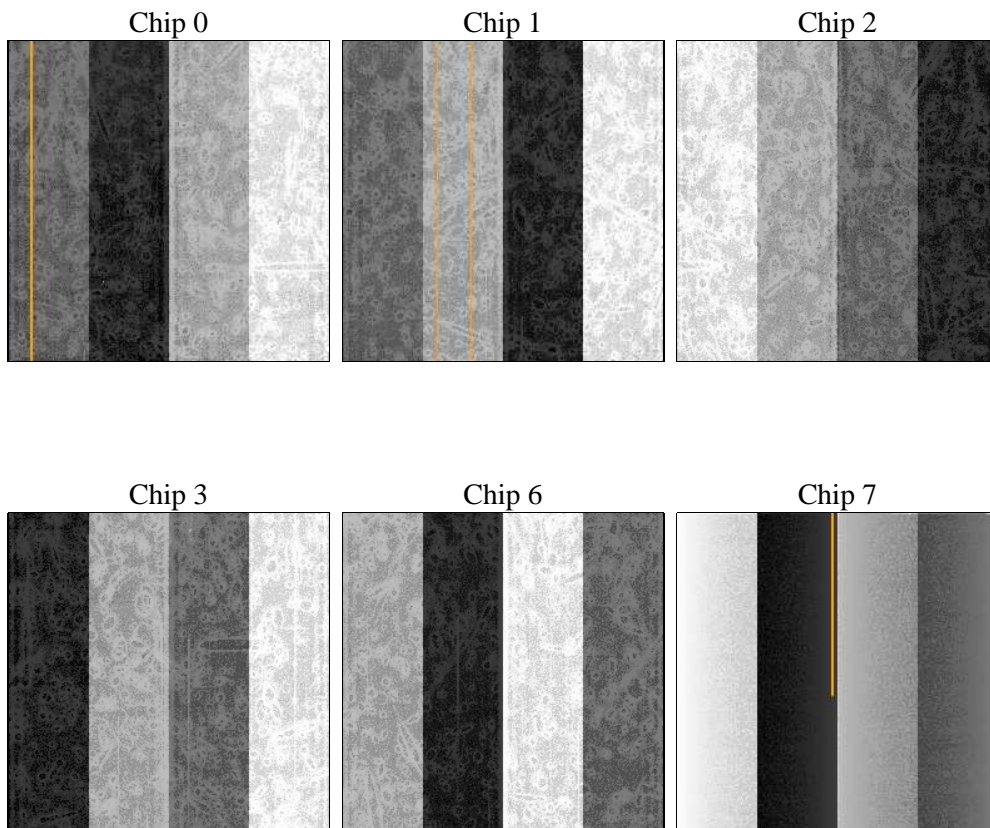
2 OBI

2.1 OBI

2.1.1 Images



2.1.2 Bias



2.1.3 Parameters

obi_num	0	Obi number	sched_exp_time	7200.000000	[s] Scheduled observation exposure time
ascdsver	8.4.5	Processing system revision	ontime	6956.8000064641	Sum of GTIs [s]
caldsver	4.5.2	 	ontime0	6956.8000064641	Sum of GTIs [s]
date	2012-10-01T22:00:12	Date and time of file creation	ontime1	6956.8000064641	Sum of GTIs [s]
revision	3	Processing version of data	ontime2	6956.8000064641	Sum of GTIs [s]
			ontime3	6956.8000064641	Sum of GTIs [s]
			ontime6	6956.8000064641	Sum of GTIs [s]
			ontime7	6953.5590661317	Sum of GTIs [s]
			l1events	278133	Number of level 1 events

2.1.4 Events

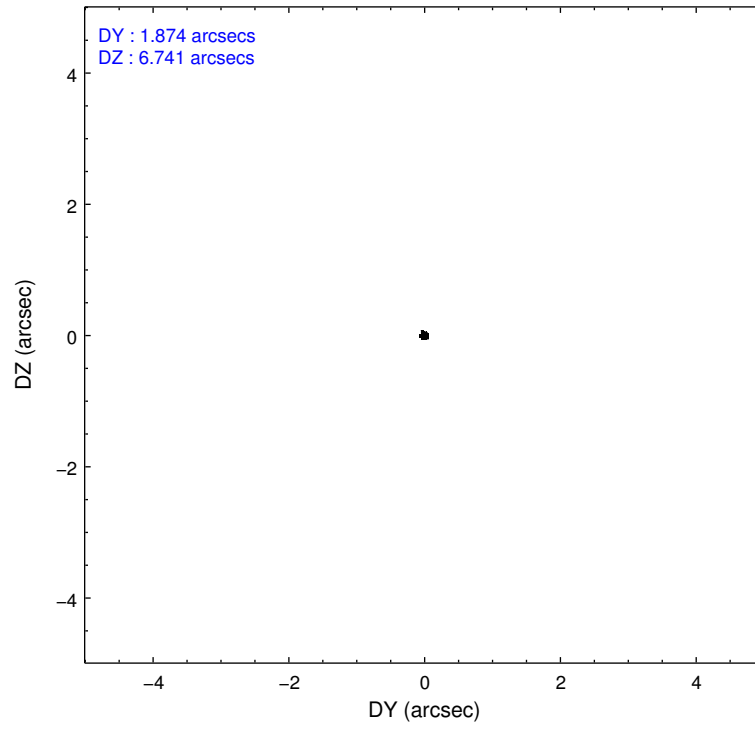
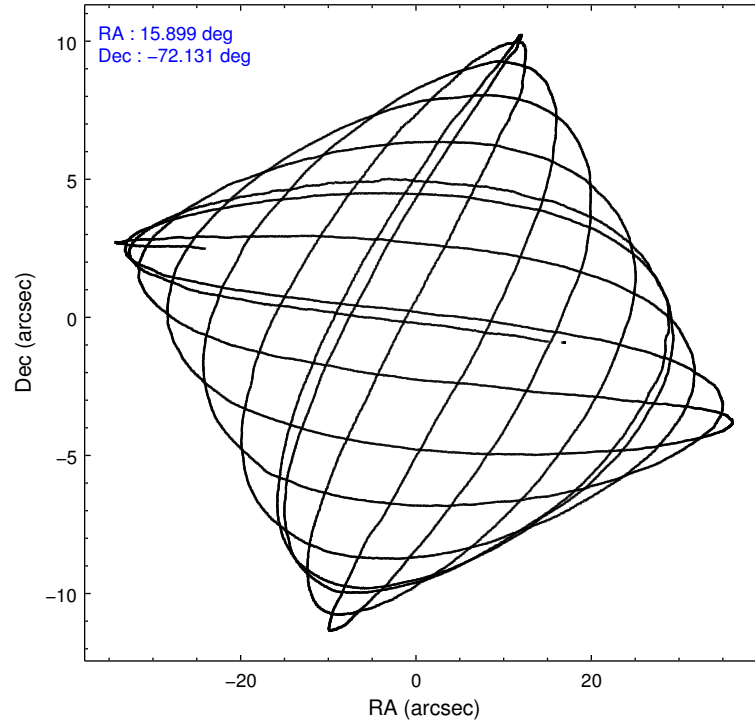
	ccd 0	ccd 1	ccd 2	ccd 3	ccd 6	ccd 7		ccd 0	ccd 1	ccd 2	ccd 3	ccd 6	ccd 7
level 1 events	38344	37245	41459	65222	42937	52926	grade 0 events	2472	2356	2635	23637	2188	2234
rejected events	33096	31892	36182	36321	37851	30863		6%	6%	6%	36%	5%	4%
rejected %	86%	85%	87%	55%	88%	58%	grade 1 events	26	14	23	198	18	43
								0%	0%	0%	0%	0%	0%
							grade 2 events	1009	1008	992	2604	1015	4237
								2%	2%	2%	3%	2%	8%
							grade 3 events	467	508	450	878	492	2027
								1%	1%	1%	1%	1%	3%
							grade 4 events	474	533	412	844	471	2003
								1%	1%	0%	1%	1%	3%
							grade 5 events	1416	1663	1399	1635	1749	4947
								3%	4%	3%	2%	4%	9%
							grade 6 events	831	954	790	950	921	11566
								2%	2%	1%	1%	2%	21%
							grade 7 events	31649	30209	34758	34476	36083	25869
								82%	81%	83%	52%	84%	48%

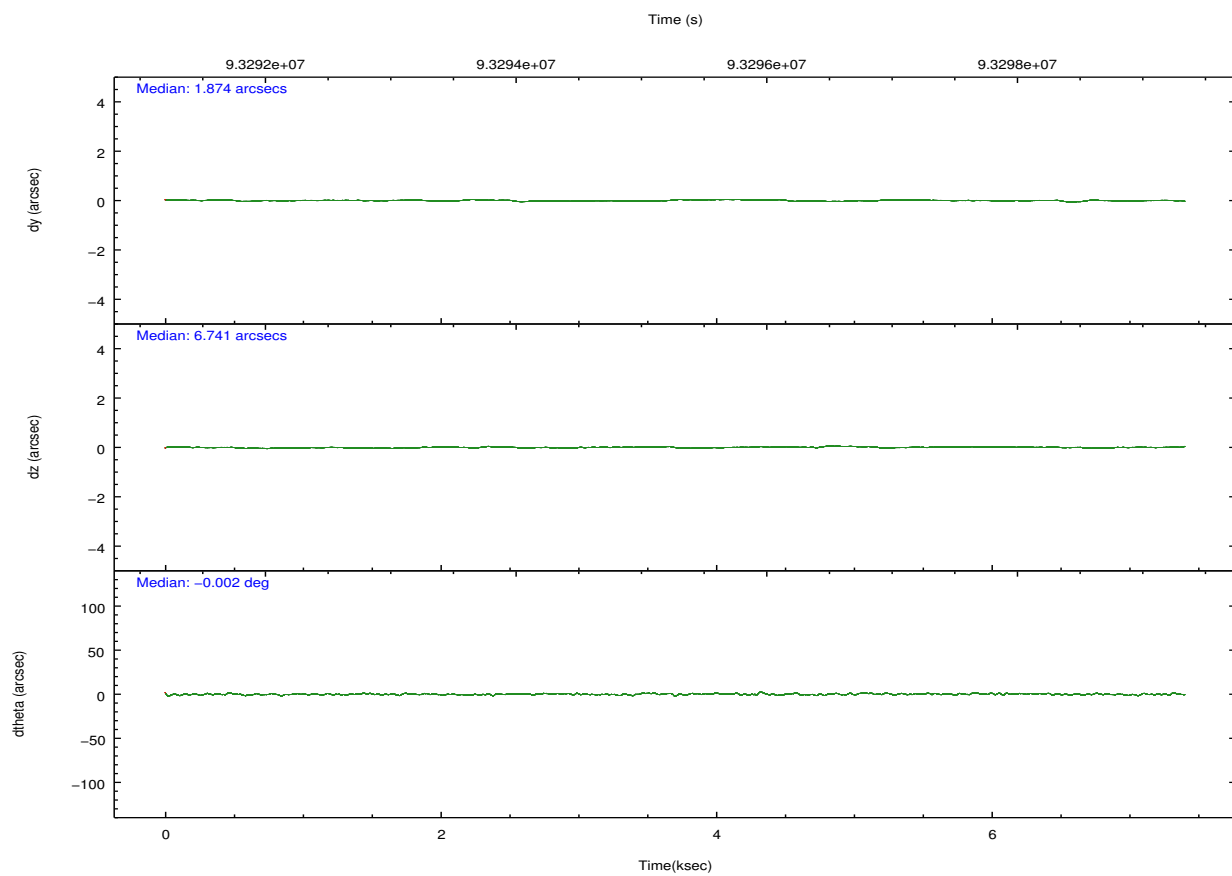
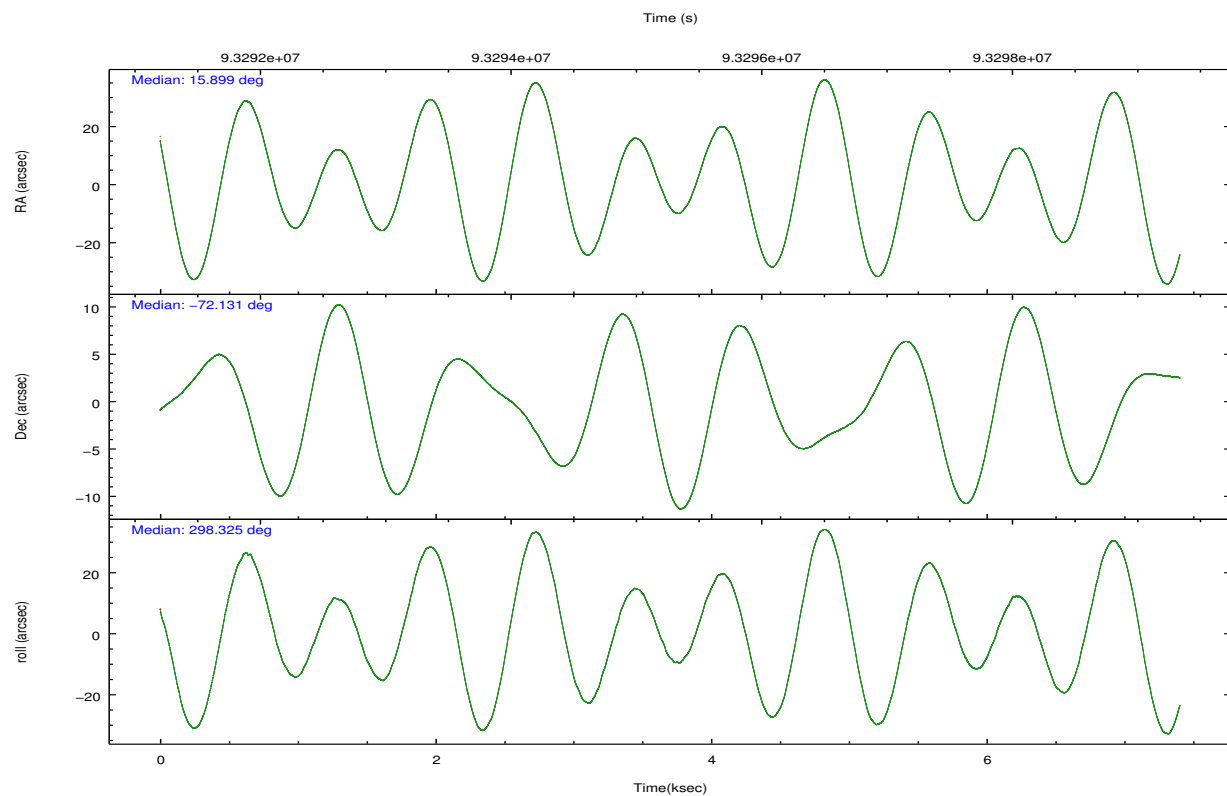
2.2 Compared Parameters

Parameter	Planned	Actual
Instrument	ACIS	ACIS
Detector	ACIS-012367	ACIS-012367
Grating	NONE	NONE
Data mode	FAINT	FAINT
Observation mode	POINTING	POINTING
[deg] Pointing RA	15.822761	15.89862016912069
[deg] Pointing Dec	-72.116515	-72.13096944605556
[deg] Pointing Roll	298.048528	298.3294045609616
[s] Window start time (MET)	92016064.184000	92016064.184000
[s] Window stop time (MET)	94608064.184000	94608064.184000
[mm] SIM focus pos	-0.782348	-0.7809083437167272
[mm] SIM defocus	0	0.001439871863259334
[mm] SIM translation stage pos	-233.592463	-233.5874344608287
[mm] SIM translation stage offset	0	-0.005018542100998502
[s] Observation start time (MET)	93291767.184000	93291391.43508001
Observation start date	2000-12-15T18:21:43	2000-12-15T18:16:31
[s] Observation end time (MET)	93298967.184000	93299101.99787401
Observation end date	2000-12-15T20:21:43	2000-12-15T20:25:01
Read mode	TIMED	TIMED

Parameter	Planned	Actual
Obspar format version number	7	7
Obspar file type	PREDICTED	ACTUAL
Obspar update status	NONE	UPDATED
Number of optional ACIS chips dropped	0	0
On-chip summing requested	N	N
Subarray requested	NONE	NONE
Alternating exposures requested	N	N
[s] Primary exposure time	0.000000	3.2

2.3 Aspect



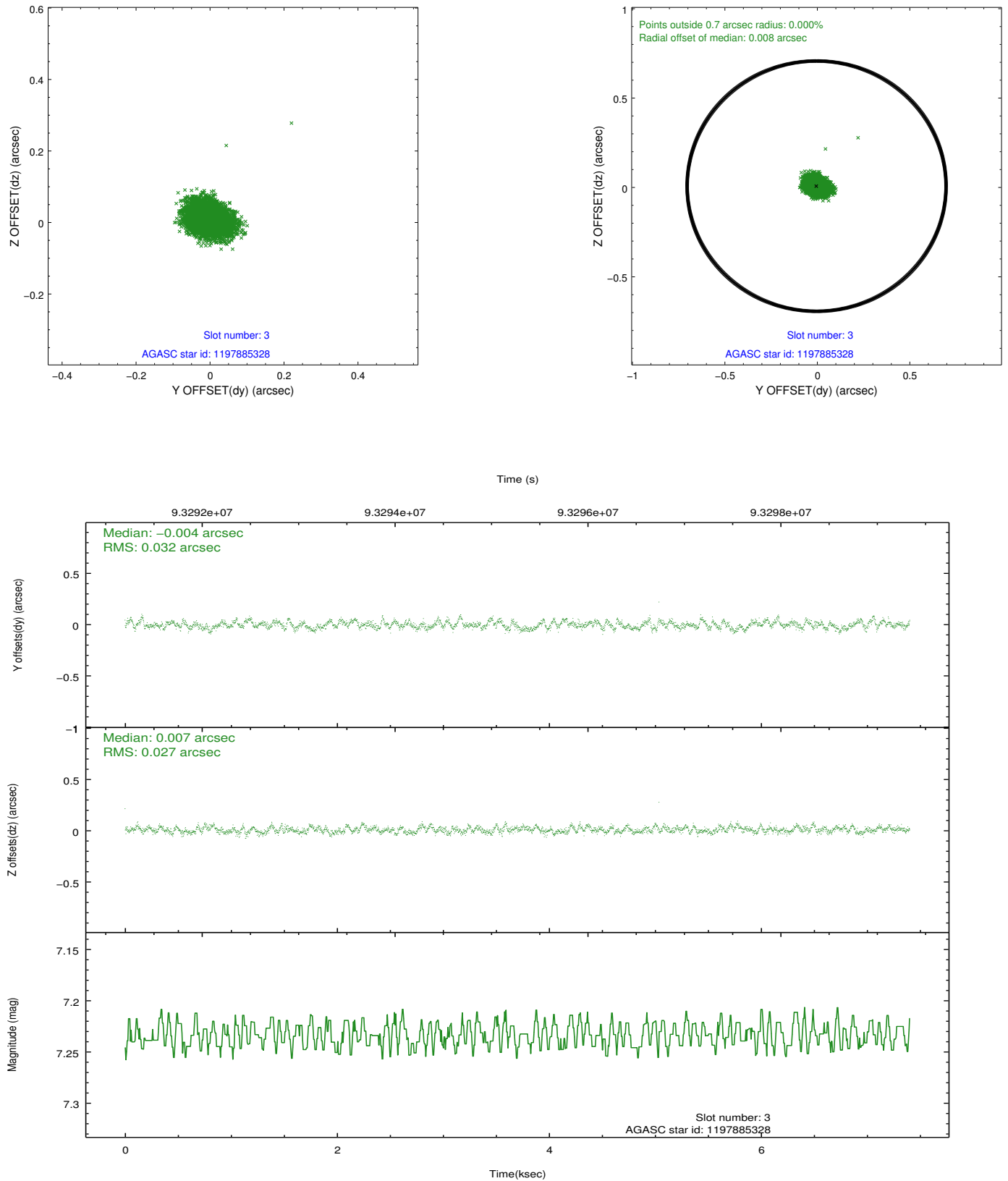


Slot Statistics

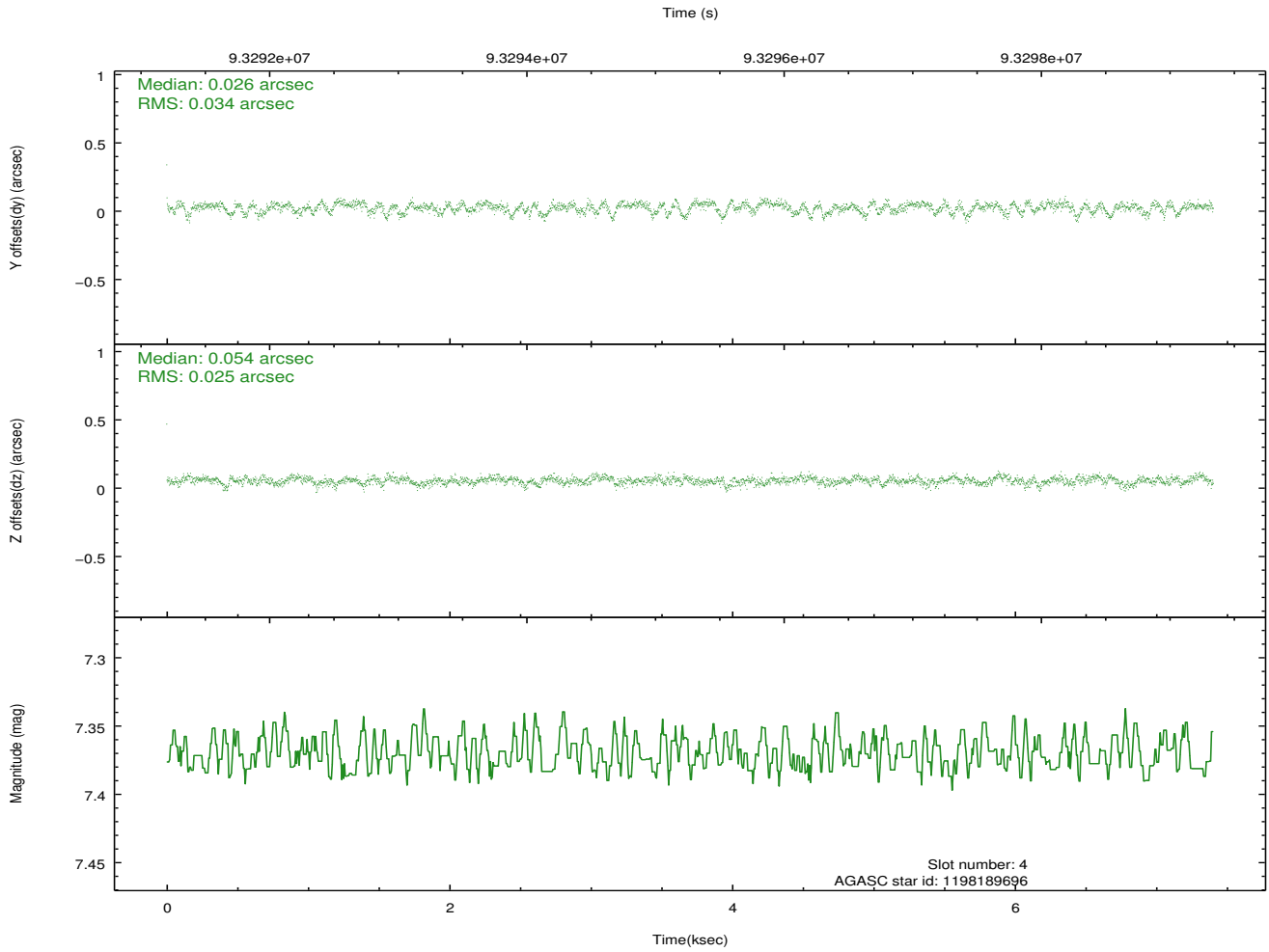
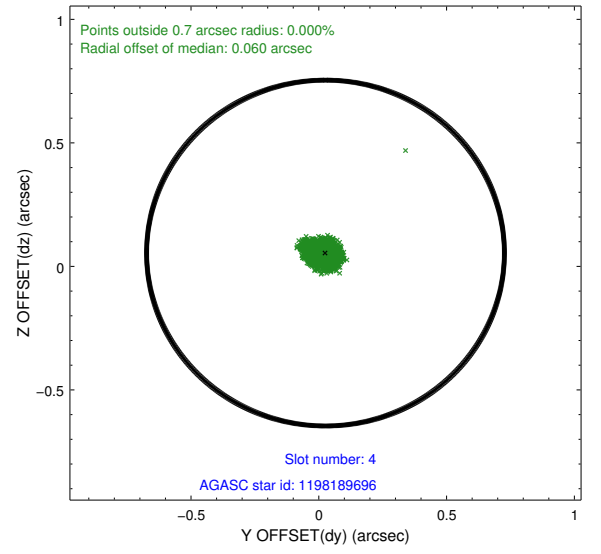
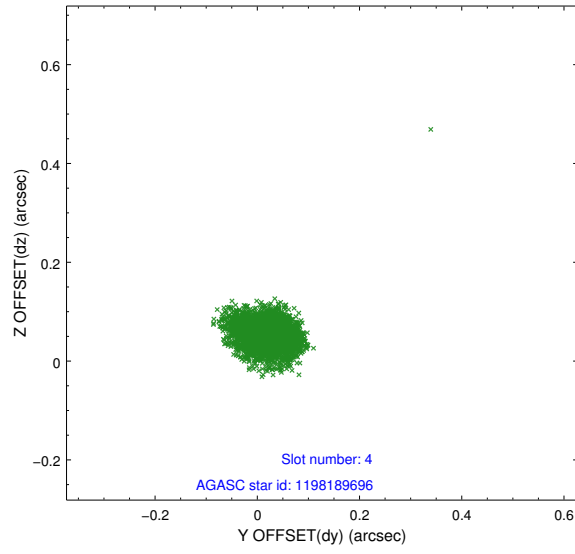
slot	status	id	mag	n_pts	med_dy	med_dz	dr1	dr2	ra	dec	mean_y	mean_z
0	FID	ACIS-I-2	7.16	1806	-0.040	-0.073	0.009	0.015	0.000000	0.000000	-756.26	-836.57
1	FID	ACIS-I-4	7.18	1806	-0.028	0.050	0.006	0.011	0.000000	0.000000	2157.45	1069.36
2	FID	ACIS-I-5	7.23	1806	-0.033	0.092	0.009	0.016	0.000000	0.000000	-1809.09	1068.11
3	GUIDE	1197885328	7.23	3611	-0.004	0.007	0.045	0.071	16.283090	-71.733943	-969.88	1104.94
4	GUIDE	1198189696	7.37	3611	0.026	0.054	0.043	0.073	15.223750	-72.697522	1546.87	-1550.78
5	GUIDE	1197750936	7.56	3611	0.014	-0.052	0.050	0.083	15.387940	-71.549550	-2032.55	520.85
6	GUIDE	1197884536	8.51	3612	0.079	0.036	0.062	0.097	17.160729	-71.835289	-173.67	1793.33
7	GUIDE	1198283128	7.84	3610	-0.112	-0.047	0.046	0.073	17.272580	-72.642428	2419.14	475.51

2.4 Star Slots

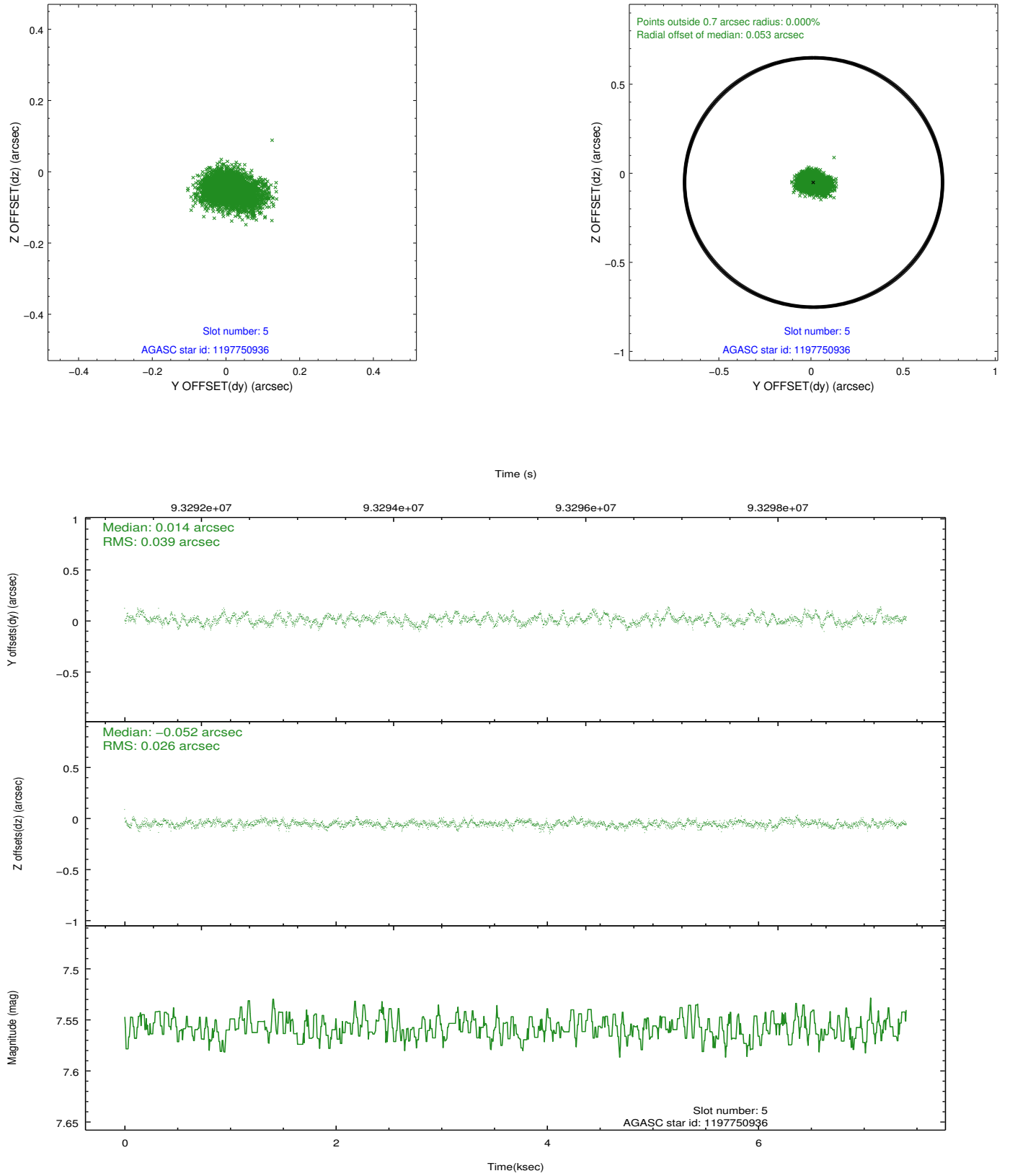
2.4.1 Slot 3



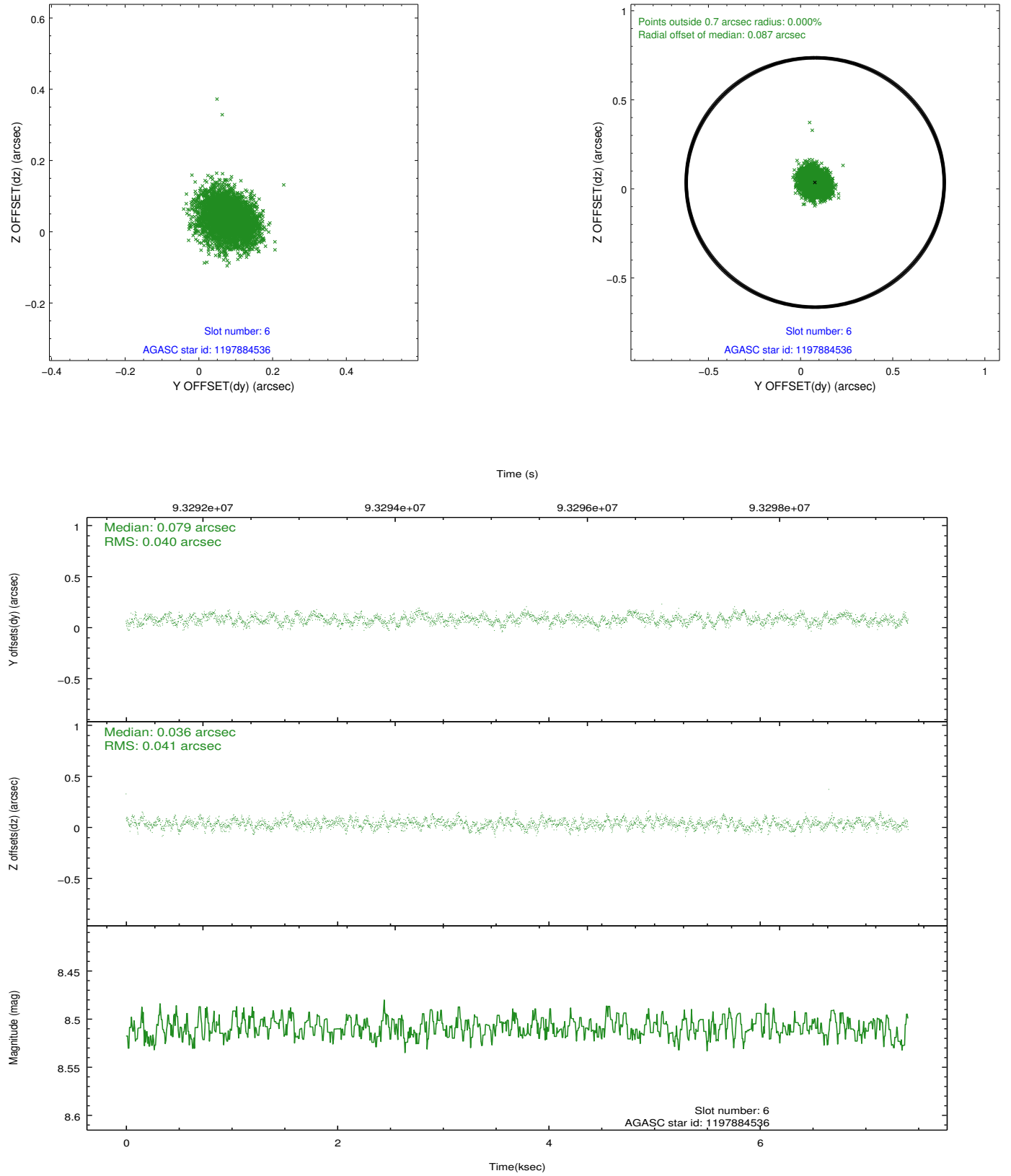
2.4.2 Slot 4



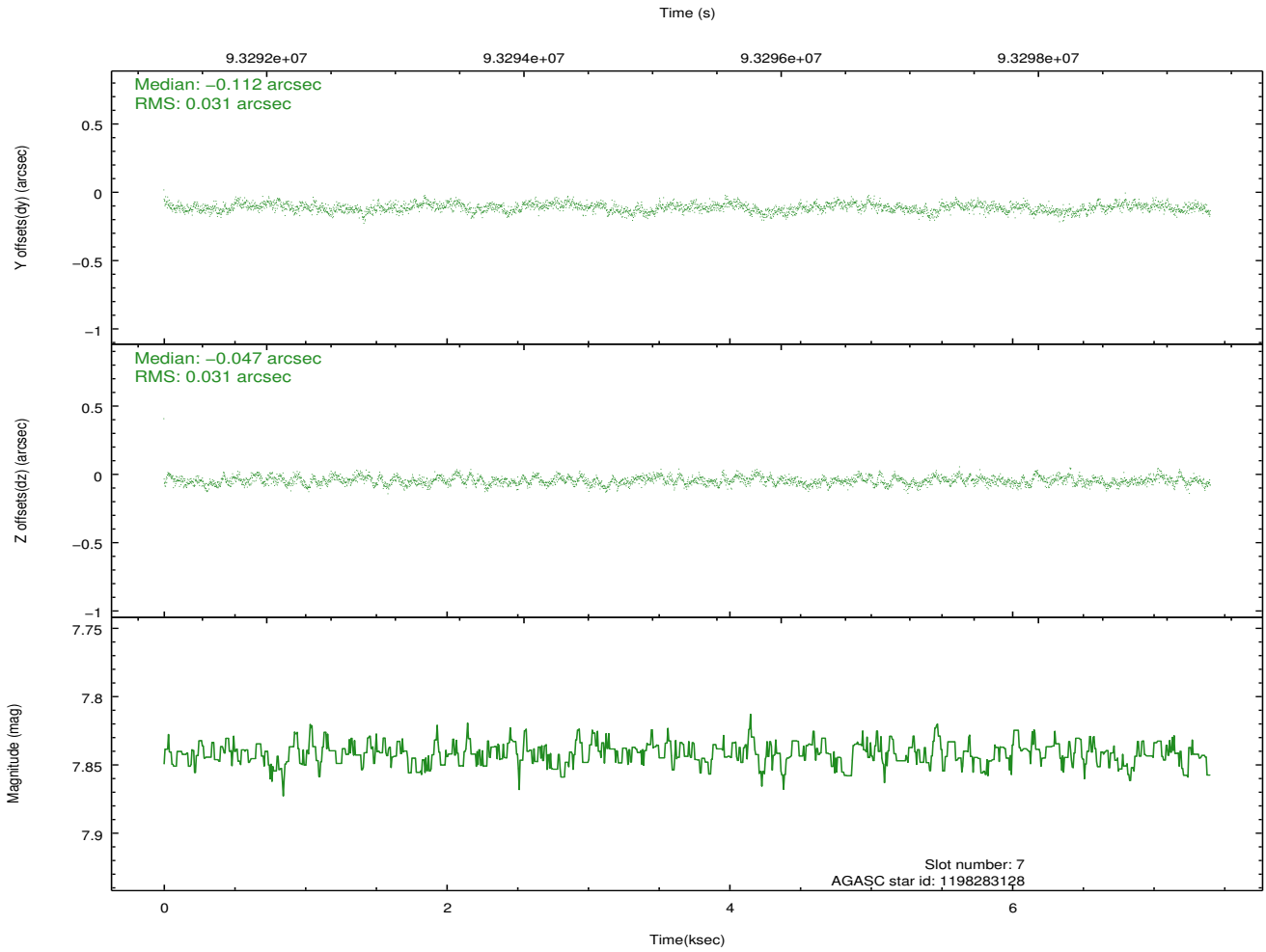
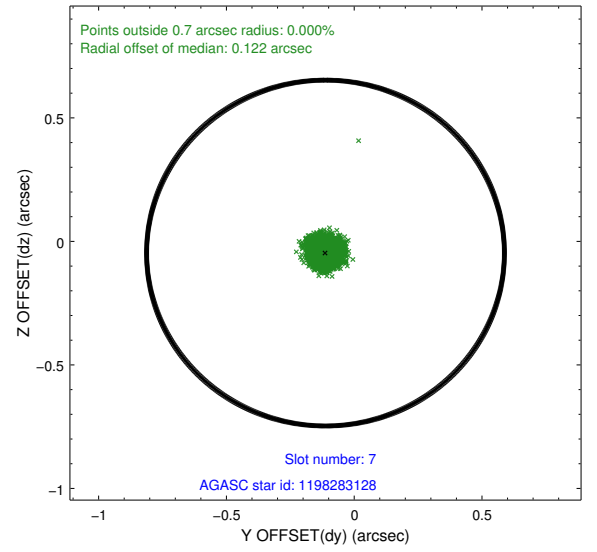
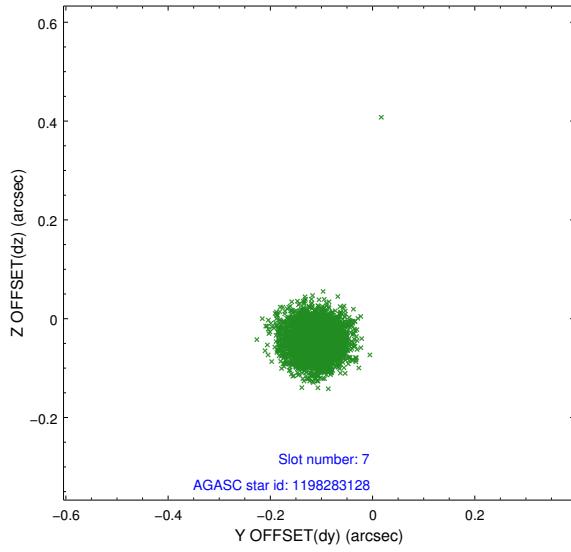
2.4.3 Slot 5



2.4.4 Slot 6

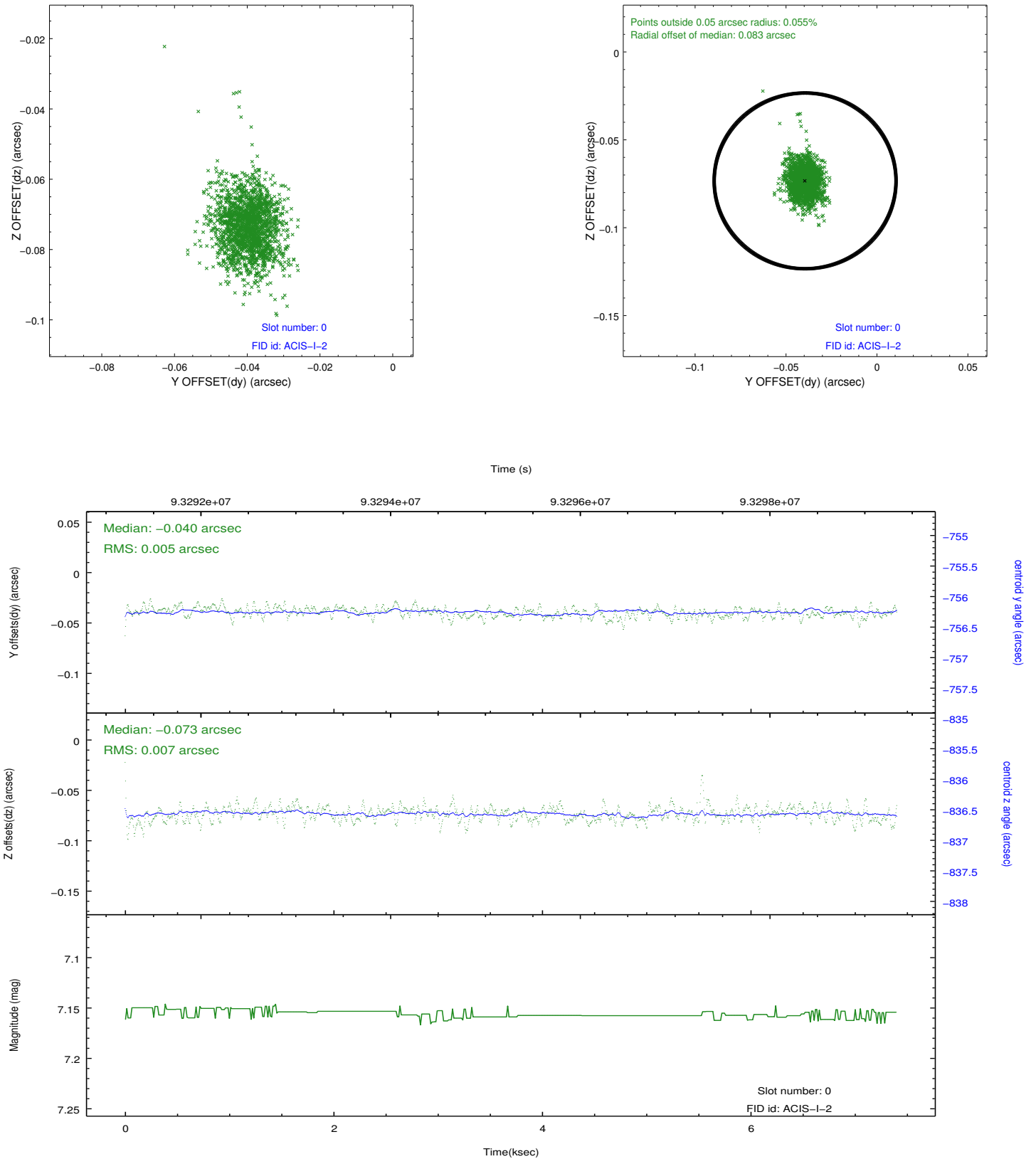


2.4.5 Slot 7

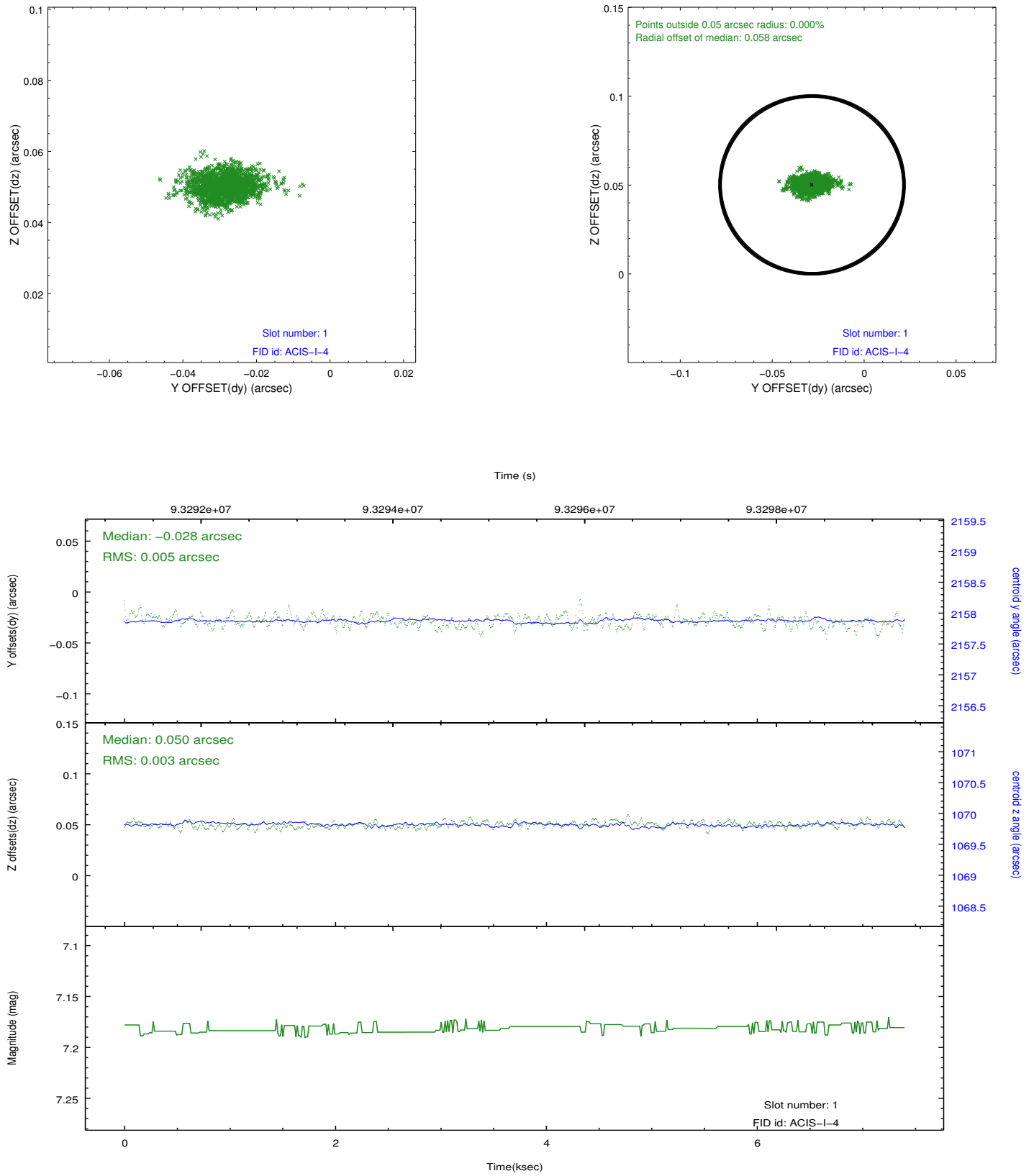


2.5 FID Slots

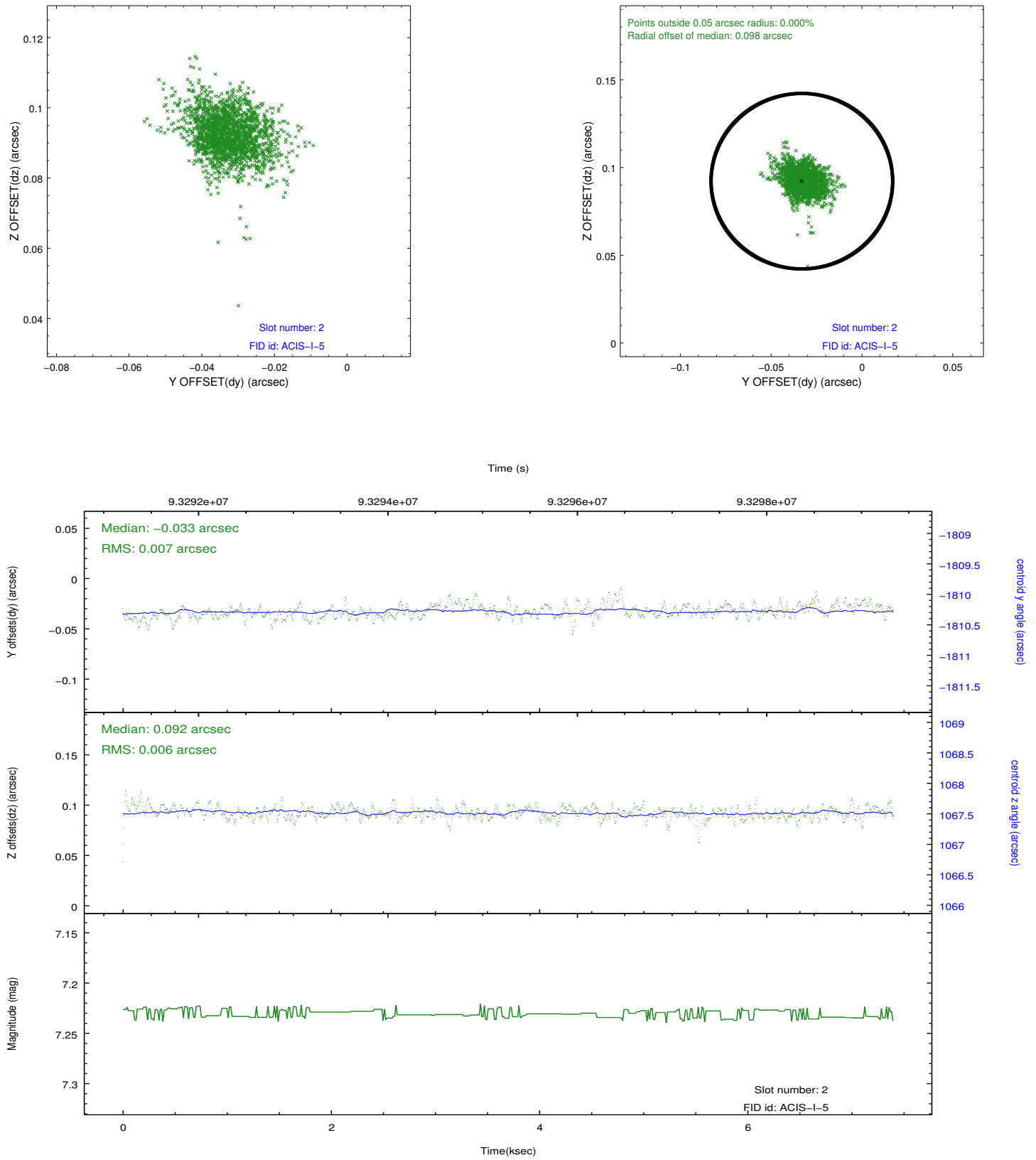
2.5.1 Slot 0



2.5.2 Slot 1



2.5.3 Slot 2



A Summary

A.1 Status

V&V Scientist	Joy Nichols
V&V Date (YYYY-MM-DD)	2012.10.11
V&V Edition	1
V&V Disposition and Status	OK
V&V Charge Time	6.96

A.2 Comments

There are 2 observations with the obsid number 1316. They appear in separate spacecraft loads with these duplicate numbers. Because the 2 obsids used different instrument configurations, the telemetry file of the other obsid 1316 was edited to create a new obsid number, obsid 62869. This obsid retains the 1316 designation.